

FINAL
LIMITED SOIL REMOVAL REPORT
AT THE
FORMER PCP/DIESEL MIXING AREA

at

2737 West Commodore Way
Seattle, Washington

Prepared for

Time Oil Company

December 18, 2002

Prepared by

FOSTER  WHEELER

FOSTER WHEELER ENVIRONMENTAL CORPORATION

12100 NE 195th, Suite 200

Bothell, WA 98011



EXECUTIVE SUMMARY

The Time Oil Company is in the process of decommissioning the petroleum terminal located at 2737 West Commodore Way, Seattle, Washington. The use of the site as a petroleum terminal was discontinued in October 2001. During a series of field investigations conducted in 2000 and 2001, pentachlorophenol-impacted soil was observed in a limited area located within the Lower Tank Yard. The limited area showed surface soil concentrations and two sub-surface detections of PCP above the MTCA Method B Cleanup Level for unrestricted land use. The Washington State Department of Ecology was notified and Time Oil entered the Voluntary Cleanup Program to address the limited PCP-impacted soil. A focused Work Plan was submitted for review by Ecology, and no objections were found with the proposed activities (Ecology correspondence dated August 22, 2002).

On September 11 and 12, 2002, an area measuring approximately 28 feet by 65 feet was excavated to a depth of approximately 6 to 18 inches. Two additional locations were excavated to a depth of 5 feet to address sub-surface exceedances. On September 18, 2002, approximately 70 cubic yards of soil were transported to Sensor Environmental, Ltd's, incineration facility in Swan Hills, Alberta. Confirmation samples were collected from the excavated area and the analytical results showed that the PCP-impacted soil had been removed. The excavation area was backfilled with clean imported material.

The limited soil removal activities were conducted in accordance with the applicable portions of Ecology's MTCA regulation (Chapter 173-340) and the VCP guidelines. The Site Summary form (ECY 020-73) is included in this executive summary to document the activities conducted and the findings. Based on the successful execution of the Ecology approved plan, and the results of the confirmation samples that do not show concentrations of PCP above the MTCA Method B Clean up Level, the Time Oil Company requests a finding of "No Further Action" for PCP-impacted soils at the site.

CONTENTS

1.	INTRODUCTION	1-1
1.1	PURPOSE AND ORGANIZATION	1-1
1.2	LEGAL DESCRIPTION	1-2
2.	PROPERTY DESCRIPTION, OPERATION, AND HISTORY	2-1
2.1	SITE DESCRIPTION	2-1
2.2	PROPERTY OPERATION	2-1
2.3	PROPERTY HISTORY	2-1
3.	PREVIOUS INVESTIGATIONS	3-1
3.1	FINAL ENVIRONMENTAL SITE ASSESSMENT: PHASE I	3-1
3.2	FINAL ENVIRONMENTAL SITE ASSESSMENT: PHASE II	3-1
3.3	FINAL ENVIRONMENTAL SITE ASSESSMENT: PHASE III	3-2
3.4	SUMMARY OF PREVIOUS INVESTIGATIONS	3-3
4.	CLEANUP LEVELS	4-1
4.1	SOIL CLEANUP LEVELS	4-1
5.	REMOVAL ACTION	5-1
5.1	SITE PREPARATION	5-1
5.2	SOIL REMOVAL	5-1
5.3	CONFIRMATION SAMPLING	5-2
5.4	SITE RESTORATION	5-2
5.5	SOIL TREATMENT	5-2
6.	CONCLUSIONS AND RECOMMENDATIONS	6-1
7.	REFERENCES	7-1
	Appendix A	Work Plan
	Appendix B	Ecology Correspondence
	Appendix C	Site Photographs
	Appendix D	Analytical Report
	Appendix E	Soil Recycling Documentation

FIGURES

- Figure 1.1.** Location of Property at 2737 West Commodore Way
- Figure 2-1.** Layout of Site and Previous Investigation Areas
- Figure 3-1.** Locations of Phase II Soil Borings
- Figure 3-2.** Locations of Phase III Soil Borings
- Figure 5-1.** Removal Area Limits and Confirmation Sample Locations

TABLES

- Table 3-1.** Analytical Results for PCP in Soil
- Table 5-1.** Analytical Results for Confirmation Samples

1. INTRODUCTION

During site investigation activities conducted in November 2000 and July 2001, pentachlorophenol (PCP)-impacted soil was found on the surface and in two subsurface locations at the Time Oil Company (TOC) bulk storage facility at 2737 West Commodore Way (Figure 1-1). Several of the soil samples showed concentrations above the Model Toxics Control Act (MTCA) Method B Formula Value (8.33 mg/kg). Consequently, a decision was made to remove the PCP-impacted soil from the area.

The Washington State Department of Ecology (Ecology) was informed of the previous investigation results (Time Oil Company correspondence dated November 29, 2001), and a focused Work Plan for limited soil removal (Foster Wheeler Environmental, 2002) was submitted through Ecology's Voluntary Cleanup Program (VCP). The Work Plan was reviewed and Ecology found no objections with the planned activities. The purpose of this report is to provide documentation for the successful execution of the Work Plan and removal of PCP-impacted soil in the Former PCP/Diesel Mixing Area.

1.1 PURPOSE AND ORGANIZATION

The purpose of the field activities conducted in September 2002 was to remove PCP-impacted soil with concentrations above the MTCA Method B Cleanup Level for unrestricted land use. The excavated soil was transported off site to an approved facility for recycling. This report provides documentation of the soil removal activities conducted and the results of the field analyses in accordance with the VCP protocols (ECY 020-73). The report does not address potential impacts from fuels or fuel-related compounds to soil and groundwater. Likewise, the report is not intended to address potential PCP impacts to groundwater. Potential impacts to groundwater and soil caused by fuel are being addressed separately. Potential impacts to groundwater from PCP are being evaluated through quarterly groundwater sampling.

This Limited Soil Removal Report is organized into six sections as follows:

- **Section 1 – Introduction:** Describes the purpose of the PCP-Impacted Limited Soil Removal Activity.
- **Section 2 – Property Description, Operation, and History:** Provides a description of the site and history
- **Section 3 – Site History Characterization:** Identifies the PCP-impacted site and summarizes previous investigations.

- **Section 4 – Cleanup Levels:** Describes the cleanup standards and regulations applicable to the area (primarily MTCA B Formula Values).
- **Section 5 – Removal Action:** Describes the methods used in soil removal activity.
- **Section 6 – Conclusion**

Appendix A Provides a copy of the accepted Work Plan

Appendix B Provides correspondence with Ecology

Appendix C Shows site photographs taken during the removal activity

Appendix D Provides the analytical reports for the contractor samples

Appendix E Provides the soil recycling documentation

1.2 LEGAL DESCRIPTION

Site Address: Time Oil Company, Inc.
2737 West Commodore Way
Seattle, Washington 98199

Property Owner: Time Oil Company, Inc.
2737 West Commodore Way
Seattle, Washington 98199

Legal Description: Section 11, township 25 north, range 3 east, Lawton Park, portions of
Blocks 3, 4, and 5

2. PROPERTY DESCRIPTION, OPERATION, AND HISTORY

The following sections provide a physical description of the site, current site operations, and historical operations.

2.1 SITE DESCRIPTION

The property runs from West Commodore Way south to the Burlington Northern rail line (Figure 2-1). Most of the property has been paved, except the area of the former rail lines behind the warehouse and tank yard located on the east side of the property. A two-story office building is located in the center of the property near West Commodore Way. A three-section warehouse is located behind this office building, and a former boiler room is connected to the east side of the warehouse via a covered loading dock. An existing open-air barreling shed is located northwest of the warehouse. The tank yard is divided into two sections; the Lower Tank Yard Area and the Upper Tank Yard Area, each constructed at a different time. The Lower Tank Yard Area contains six aboveground storage tanks (ASTs), and the Upper Tank Yard Area contains eight ASTs that are larger in volume than those in the Lower Tank Yard Area. The south side of the Upper Tank Yard Area banks steeply upward to the fence line and former rail line spur. The surface of the tank yards is primarily unpaved gravel with patches of grass. A few concrete walkways are located in the yards including the area surrounding the Former PCP/Diesel Mixing Area located in the Lower Tank Yard. Immediately to the west of the tank yards are a pump shed and foamite shed (used for fire suppression).

There are no known drinking water wells on the property, but several monitoring wells from site investigations are installed within the shallow water-bearing zone beneath the property.

2.2 PROPERTY OPERATION

The petroleum terminal discontinued operation in October 2001. The site will not be used as a petroleum terminal again. Currently it is the site for TOCs administrative offices and for storage of equipment and supplies (i.e., fascia, signs) for service stations. Most of the stored material is kept in the warehouse near the New Barreling Shed.

2.3 PROPERTY HISTORY

The Property was acquired by TOC around 1941. Historical photographs (presented in Volume 1, Appendix B of the Final Environmental Site Assessment: Phase I [Foster Wheeler

Environmental, 2000]) demonstrate a number of changes that have taken place at the Property since 1936. Prior to 1936, the Property appears to have been used for agricultural purposes.

The 1946 photograph shows the original office building, the Lower and Upper Tank Yard Areas, the pump shed and foamite building, a former barreling shed located immediately west of the office building, and overhead fuel loading racks. 55-gallon drums were filled with petroleum products in the former barreling shed, rolled under West Commodore Way via a barrel incline and tunnel to the TOC dock in the ship canal, and then loaded onto ships. This operation was conducted primarily to support World War II efforts.

The historical photograph from 1960 (Volume 1, Appendix B, Foster Wheeler Environmental, 2001) depicts the Property mainly as it is today. A warehouse building, built in the late 1940s according to the Puget Sound Regional Archives, is located south of the office building, parallel with the rail spurs (several of the rail spurs were deactivated by the time of this photograph). A new barreling shed, built in 1952 according to the Puget Sound Regional Archive files, is located just northwest of the warehouse, and the boiler house was added in 1950 (Puget Sound Regional Archive files). The barreling shed seen in the 1946 photograph is no longer on the Property in the 1960 photograph.

According to TOC employees, PCP crystals were mixed with warm diesel fuel in a small AST near the west wall of the Lower Tank Yard Area. The mixture of PCP and diesel was transferred via underground lines to the new barreling shed where 55-gallon drums and 5-gallon drums were filled, rolled onto a loading dock between the warehouse and the barreling shed, and finally rolled onto rail cars. During the mixing process, some of the PCP crystals were spilled on the ground surface in the Former PCP/Diesel Mixing Area. This PCP/diesel mixing operation reportedly occurred for 3 to 4 months during 1967 as part of a military contract. The 1997 photograph shows the Property as it exists today (Volume 1, Appendix B, Foster Wheeler Environmental, 2000).

3. PREVIOUS INVESTIGATIONS

Previous investigations have been conducted near the Former PCP/Diesel Mixing Area and are documented in the following reports:

- Final Environmental Site Assessment: Phase I, Foster Wheeler Environmental, August 2000.
- Final Environmental Site Assessment: Phase II, Foster Wheeler Environmental, April 2001a.
- Final Environmental Site Assessment: Phase III, Foster Wheeler Environmental, December 2001b.

A summary of these reports and their findings are discussed in the following sections.

3.1 FINAL ENVIRONMENTAL SITE ASSESSMENT: PHASE I

A Phase I Environmental Site Assessment was conducted at 2737 West Commodore Way in the summer of 2000 (Foster Wheeler Environmental, 2000). The Phase I Investigation was conducted in accordance with the applicable American Society for Testing Methods (ASTM) standard at the time (ASTM E 1527-97). Based on a review of available documents, interviews, and site reconnaissance, further field investigations were recommended in the Former PCP/Diesel Mixing Area, Former Barrel Shed, and New Barrel Shed to assess the potential impacts of PCP use. Figure 3-1 shows the locations of the three areas at the site.

3.2 FINAL ENVIRONMENTAL SITE ASSESSMENT: PHASE II

In November 2000, Foster Wheeler conducted the initial field investigation in the Former PCP/Diesel Mixing Area to evaluate the potential for PCP-impacted soil and groundwater. Five soil borings (SB-01 through SB-05) were drilled around the former AST location. The borings were drilled manually using a hand auger. The depths of the borings ranged from 3 feet below ground surface (bgs) to 14 feet bgs. Four surface (0 to 0.6 inches) soil samples (SS-01 through SS-04) were also collected around the area where PCP was mixed with diesel. The sample locations are shown on Figure 3-1.

Six soil borings (SB-26 through SB-31) were installed near the Former Barrel Shed using a hollow-stem auger (HSA) drill rig operated by Cascade drilling. The borings ranged in depth from 20 to 25 feet. Three soil borings were drilled near the New Barrel Shed. Two of the

borings were abandoned at a shallow depth (< 1 foot) due to refusal caused by concrete. Only one boring (SB-06) was completed; south of the New Barrel Shed and between the former rail spurs.

Soil samples were collected and analyzed for petroleum products and PCP using EPA Method 8270-selective ion monitoring (sim). The analyses were conducted by North Creek Analytical Laboratories, Inc., in Bothell, Washington.

The analytical results from the soil borings (Table 3-1) in the Former PCP/Diesel Mixing Area showed PCP concentrations exceeding the MTCA Method B Cleanup Level in surface soil samples (0 to 0.6 inches) at SB-03 (202 mg/kg) and SB-04 (803 mg/kg). PCP was also detected above the MTCA Method B Level at a depth of 5 feet bgs in SB-04 (20.9 mg/kg). Trace amounts of PCP were detected throughout most of the borings. The trace levels (< 0.2 mg/kg) are believed to be a result of smearing of the surface material caused by the sampling method (hand auger) and not representative of actual subsurface conditions. The surface soil samples collected from the Former PCP/Diesel Mixing Area were below the reporting limit with the exception of SS-01 (3.87 mg/kg); though still below the MTCA Method B Level.

3.3 FINAL ENVIRONMENTAL SITE ASSESSMENT: PHASE III

In July 2001, five additional soil borings were drilled and one near surface sample was collected in the Former PCP/Diesel Mixing Area (Figure 3-2). Some of the soil boring locations were new (SB-56 and SB-55), while the other three locations (SB-52, SB-53, and SB-54) were located near previous boring locations. The borings were completed with a 1-inch inner diameter Acker Soil Mechanic, operated by BoreTec, Inc. Some of the bores were located near previous borings in order to collect representative sub-surface, since the sub-surface hand-auger samples collected in March 2001 were suspect. One of the borings (SB-56) was completed as a temporary well (01MW-14). A boring (SB-58) was installed hydraulically down-gradient and in front of the New Barrel Shed Area and completed as a well (01MW-15). A soil boring (SB-59) was also drilled in the Former Barrel Shed Area, adjacent to well 01MW-06, to collect soil samples for the analysis of PCP. The soil samples from the boring for well 01MW-06 were not analyzed for PCP during the Phase II activities. One round of groundwater sampling showed low concentrations (below the action level) of PCP in well 01MW-06. Therefore, in order to fill a data gap, a boring was co-located to the well to assess the potential presence of PCP in soil. Borings SB-58 and SB-59 were drilled by Cascade Drilling using a CME 75 High Torque hollow stem auger drill rig.

The analytical results showed concentrations of PCP in the Former PCP/Diesel Mixing Area above the MTCA Method B Level (8.33 mg/kg) in SB-56 (8.88 mg/kg) at a depth of 5 feet below ground surface. None of the other samples from the Former PCP Diesel/Mixing Area, Former Barrel Shed Area (SB-59), or New Barrel Shed Area (SB-58) showed concentrations of PCP above the MTCA level.

3.4 SUMMARY OF PREVIOUS INVESTIGATIONS

Based on the analytical results of samples collected during the previous investigations, the extent of PCP-impacted soil is limited to the surface soil surrounding the AST in the Former PCP/Diesel Mixing Area. Only two subsurface samples within the area showed concentrations above the MTCA Method B Cleanup Level for soil.

The samples in the New Barrel Shed Area and Former Barrel Shed Area did not show concentrations of PCP in soil above the MTCA Method B Cleanup Level or applicable screening level.

4. CLEANUP LEVELS

4.1 SOIL CLEANUP LEVELS

The primary contaminant of concern for the removal activity conducted was PCP. The removal action was limited in spatial extent to the area of previous use (Former PCP/Diesel Mixing Area) where the material had been used historically and was limited to soil. The primary goal of the removal action was guided by MTCA (WAC 173-340). MTCA contains cleanup standards and regulations to protect human health and the environment from past releases of hazardous substances. Potential exposure of humans to PCP-impacted soil, and the potential leaching by PCP-impacted soil into the groundwater, were appropriate exposure scenarios in the Former PCP/Diesel Mixing Area. MTCA (WAC 173-340-900) lists cleanup levels for various contaminants in soil and groundwater. The cleanup levels for soil are divided into restricted land use and unrestricted land use categories. These tables are commonly referred to as MTCA Method B Formula Values. There are no MTCA Method A Cleanup Levels for PCP. Therefore, MTCA provides Method B Formula Values, which are risk-based values. These values are found in Ecology's Cleanup Levels and Risk Calculations Under the MTCA Cleanup Levels and Risk Calculation (CLARC), Version 3.1 (Ecology, 2001). The MTCA Method B Formula Value for carcinogenic PCP based on direct contact pathway is 8.33 mg/kg. This is the most conservative value for unrestricted land use and is applicable for the Former PCP/ Diesel Mixing Area based on the exposure scenarios that were present prior to the removal action.

5. REMOVAL ACTION

The limited soil removal activity for the Former PCP/Diesel Mixing Area was conducted from September 11 through September 17, 2002. Prior to the commencement of the removal activity, a Work Plan was prepared and submitted to Ecology for review under the VCP. Based on the Work Plan and other supplemental information, Ecology had "no objections to proceeding with the proposed remediation of PCP-impacted soil" (correspondence with Ecology, August 22, 2002). The following sections describe in greater detail removal activities taken to remediate PCP-impacted soil in the Former PCP/Diesel Mixing Area.

5.1 SITE PREPARATION

Prior to removing the PCP-impacted soil, any ancillary piping, including the manifold system, and surface structures were removed for ease of access. The AST, which had been cleaned previously, was removed from the site and transported to Schnitzer Steel for recycling. Other surface piping, including the above ground manifold system were cleaned during the terminal decommissioning in October 2001. The piping was disconnected at the flanges or cut and lifted out of the Lower Tank Yard by a boom truck and into a drop box provided by Schnitzer Steel. The piping and AST were transported to Schnitzer Steel for recycling.

A portion of the northern wall in the Lower Tank Yard was removed to allow equipment to enter the area. An asphalt ramp was made leading into the Lower Tank Yard from the driveway outside the area. The extent of the area to be excavated was marked based on the historical analytical results and the accepted Work Plan (Foster Wheeler Environmental, 2002).

5.2 SOIL REMOVAL

The soil was removed from the area using a trackhoe in two stages. The soil from the south end of the area was excavated first and mounded near the north end of the area. The depth of the excavation was approximately 6 inches to 18 inches. Confirmation samples (PEC-ES-01 and PEC-SS-01 through PEC-SS-03) were then collected. The northern extent of the area was excavated when the soil was loaded into trucks for transportation and recycling. The remaining confirmation samples (PEC-ES-02 and PEC-SS-04 through PEC-SS-07) were then collected. Two subsurface locations (SB-04 and SB-56) were excavated using the bucket of the trackhoe. The subsurface excavation near SB-56 was approximately 5 feet wide and 5 feet deep. SB-56 was the location of monitoring well 01MW-14, which was removed during the excavation activity. The entire well and all annular material were removed. The subsurface excavation

near SB-04 was increased due to a subsurface concrete pad in the vicinity that forced the excavation limits to expand. The final subsurface excavation near SB-04 was approximately 5 feet wide, 10 feet long, and 7 feet deep.

All excavated soil was stockpiled in a lined area adjacent to the excavation. The stockpiled soil was bermed and covered to control runoff and water accumulation prior to final disposition. Approximately 70 cubic yards of soil was excavated from the area.

5.3 CONFIRMATION SAMPLING

Confirmation samples were collected after the soil had been removed from the area. The samples were collected using a clean stainless steel spoon and placing the soil directly into the appropriate sample jar provided by the analytical laboratory. The samples were analyzed for PCP using EPA Method 8270-sim by North Creek Analytical, Inc., in Bothell, Washington. The samples were hand carried to the laboratory in a chilled cooler the day they were collected. The locations of the confirmation samples are shown on Figure 5-1.

5.4 SITE RESTORATION

The analytical results from the confirmation samples (Table 5-1) showed that the PCP-impacted soil had been successfully removed from the Former PCP/Diesel Mixing Area. Clean imported fill was brought into the area and used to bring the surface to grade.

5.5 SOIL TREATMENT

The excavated soil was transported from the site on September 17, 2002. Because the soil removed was generated during the manufacturing of a wood treating solution containing PCP, the soil was designated as an USEPA category F027 waste. There are no treatment facilities in the United States to treat category F027 waste; therefore, the soil was transported to an incineration facility in Canada for proper treatment. TOC contracted with Sensor Environmental Services, Ltd., to transport and treat the soil at their incineration facility in Swan Hills, Alberta. The EPA and Environment Canada (Canada's EPA equivalent) were notified prior to the transportation of the material.

6. CONCLUSIONS AND RECOMMENDATIONS

On behalf of the Time Oil Company, Foster Wheeler prepared a Work Plan to address the rationale and procedures for removing PCP-impacted soil from the Former PCP/Diesel Mixing Area at 2737 West Commodore Way. The historical data showed that PCP-impacted soil was present in the surface and at two other locations at a depth of approximately 5 feet below ground surface. In July 2002, TOC/Foster Wheeler entered Ecology's VCP for the limited soil removal of PCP-impacted soil. A Work Plan was prepared, reviewed by Ecology in August 2002, and the removal activity was approved.

Approximately 70 cubic yards of PCP-impacted soil was removed from the area on September 11 and 12, 2002. Confirmation samples were collected and the analytical results showed that the PCP-impacted soil had been removed. The excavated soil was removed for proper treatment at Sensor Environmental Services, Ltd's incineration facility in Swan Hills, Alberta. The excavated area was then backfilled with clean import material.

Based on the successful execution of the Work Plan, analytical results indicating no soil exceedances for PCP, and completion of the VCP requirement, we respectfully request a finding of "no further action" in regard to PCP-impacted soil in the Former PCP/Diesel Mixing Area.

7. REFERENCES

Ecology (Washington State Department of Ecology). 2002. Technical Correspondence from Jerome B. Cruz of Ecology to Bryan S. Graham of Foster Wheeler Environmental. August 22, 2002.

Ecology. 2001. Cleanup Levels and Risk Calculations under the Model Toxics Control Act Cleanup Regulation CLARC, Version 3.1, November 2001.

Foster Wheeler Environmental (Foster Wheeler Environmental Corporation). 2002. Limited Soil Removal Activity Work Play for Former PCP/Diesel Mixing Area, 2737 West Commodore Way, Seattle, Washington. July 3, 2002.

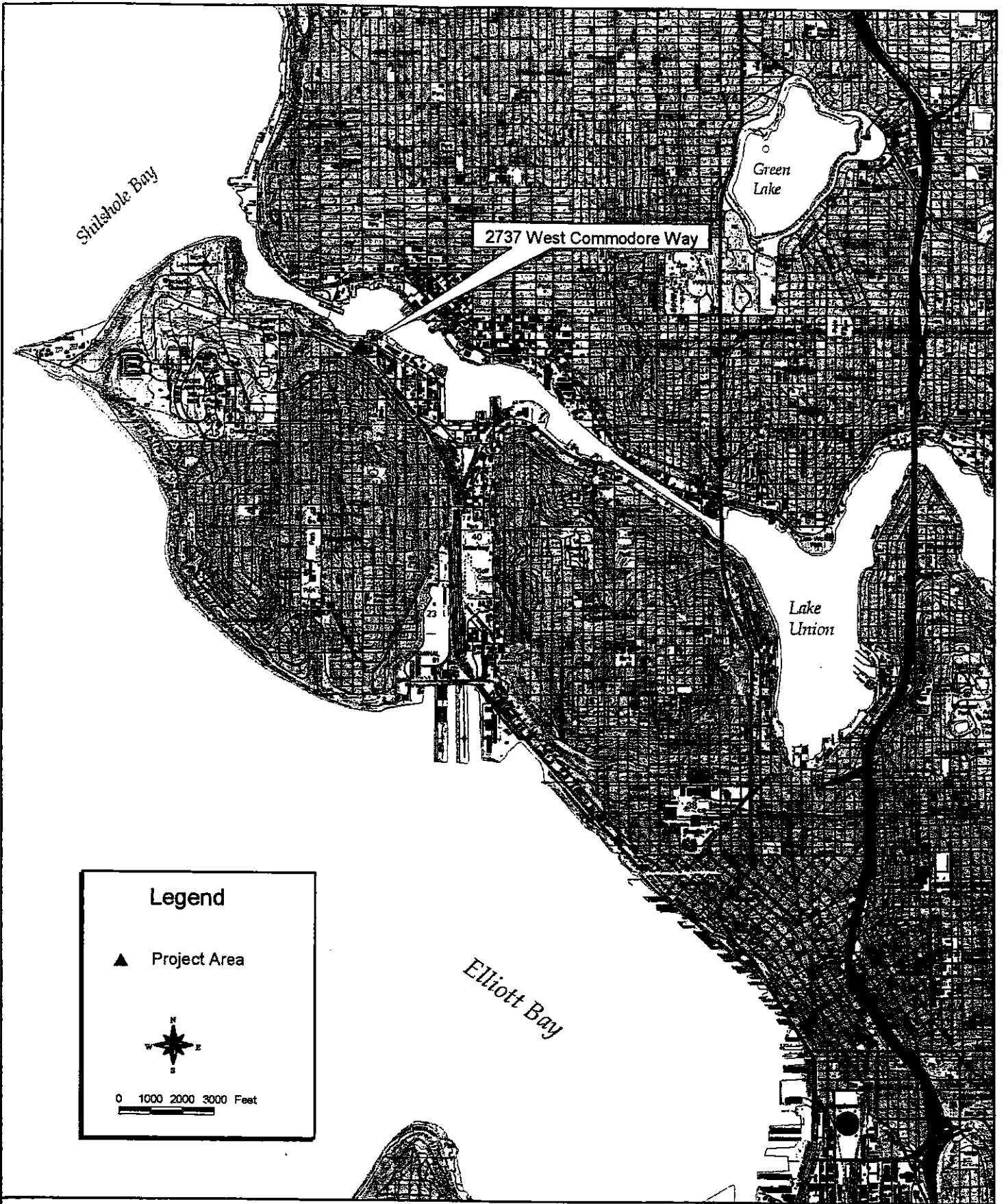
Foster Wheeler Environmental. 2001a. Environmental Site Assessment: Phase II at 2737 West Commodore Way, Seattle, Washington. Prepared for Time Oil Company by Foster Wheeler Environmental Corporation, Bothell, Washington. April 2001.

Foster Wheeler Environmental. 2001b. Phase III Environmental Site Assessment at 2737 and 2750 West Commodore Way properties, Seattle, Washington. Prepared for Time Oil Company by Foster Wheeler Environmental Corporation, Bothell, Washington. October 16, 2001.

Foster Wheeler Environmental. 2000. Environmental Site Assessment: Phase I for Time Oil Company, 2737 West Commodore Way, Seattle, Washington. Prepared for Time Oil Company by Foster Wheeler Environmental Corporation, Bothell, Washington. August 25, 2000.

Time Oil Company. 2001. Technical Correspondence from Scott Sloan of Time Oil Company to Uwanta Hickey of Washington State Department of Ecology. November 29, 2001.

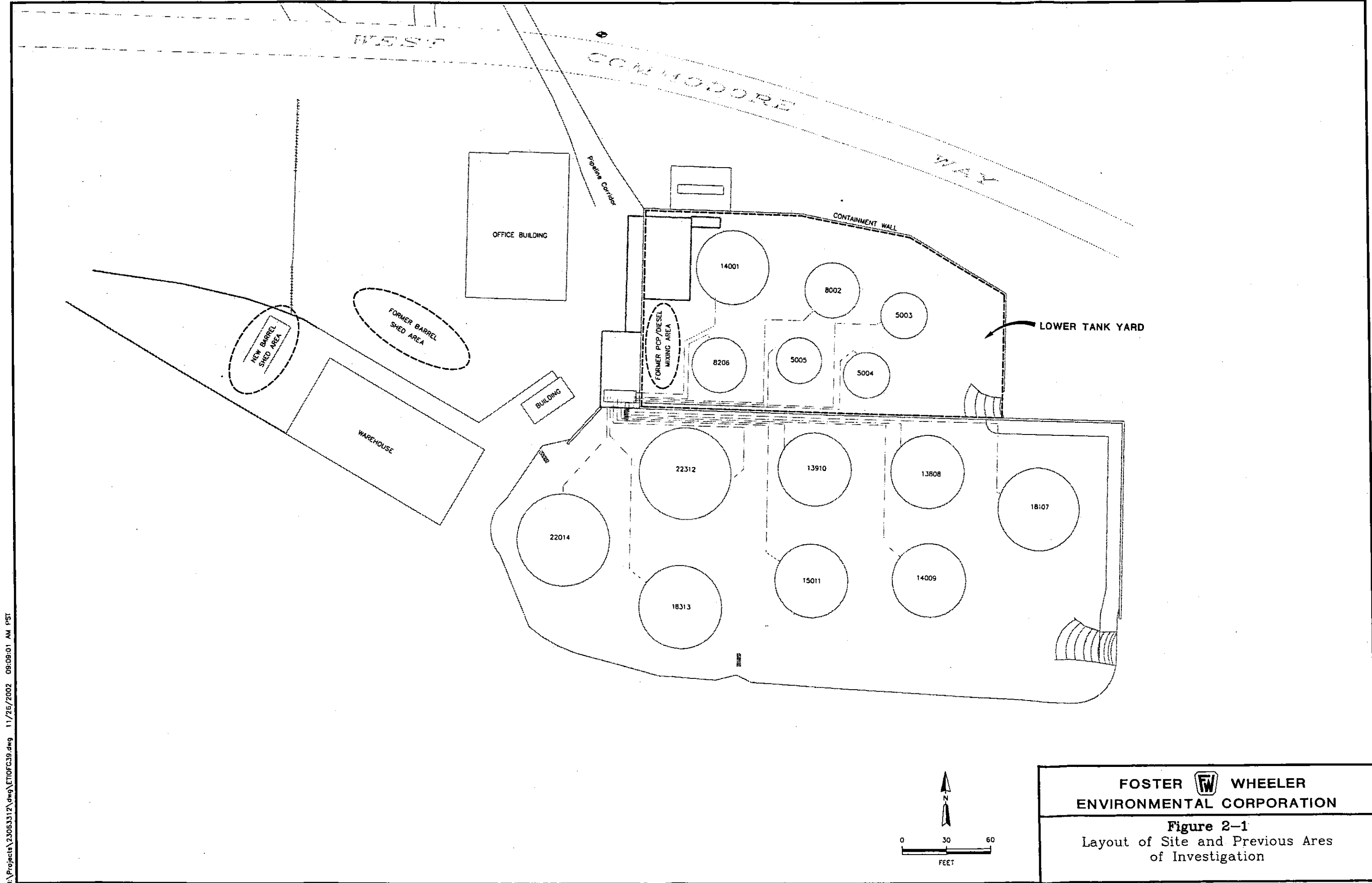
FIGURES



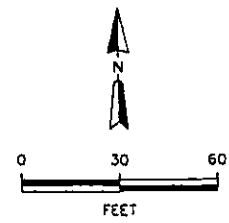
Time Oil Company
 Limited Soil Removal Activity
 Former PCP/Diesel Mixing Area

Figure 1-1

Location of Site



I:\Projects\23063312\dwg\ETIOFC39.dwg 11/26/2002 09:09:01 AM PST




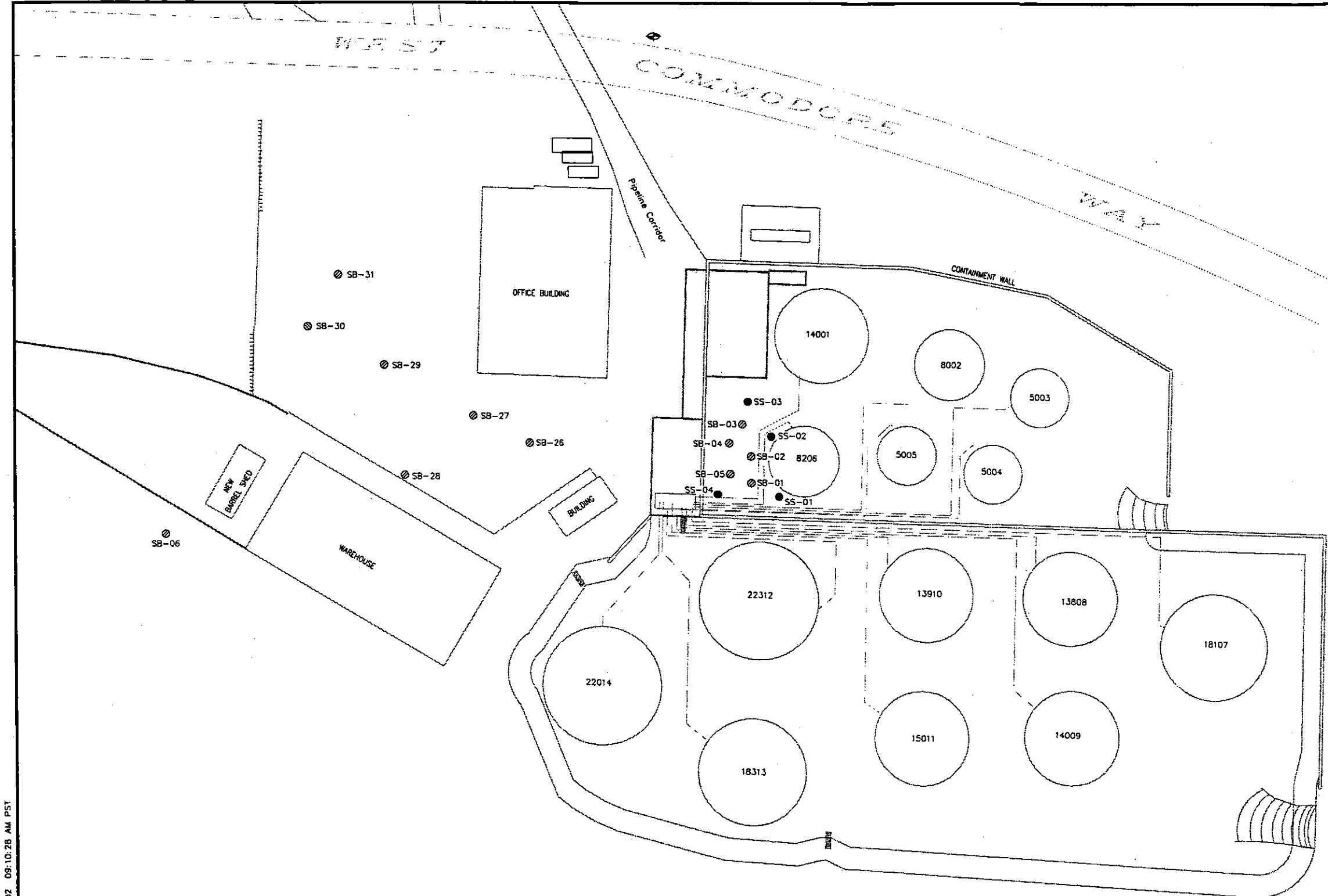
FOSTER  WHEELER ENVIRONMENTAL CORPORATION

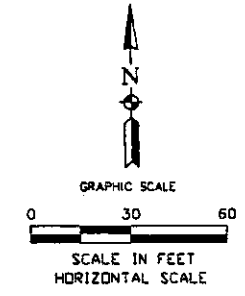
Figure 2-1
Layout of Site and Previous Areas of Investigation



LEGEND

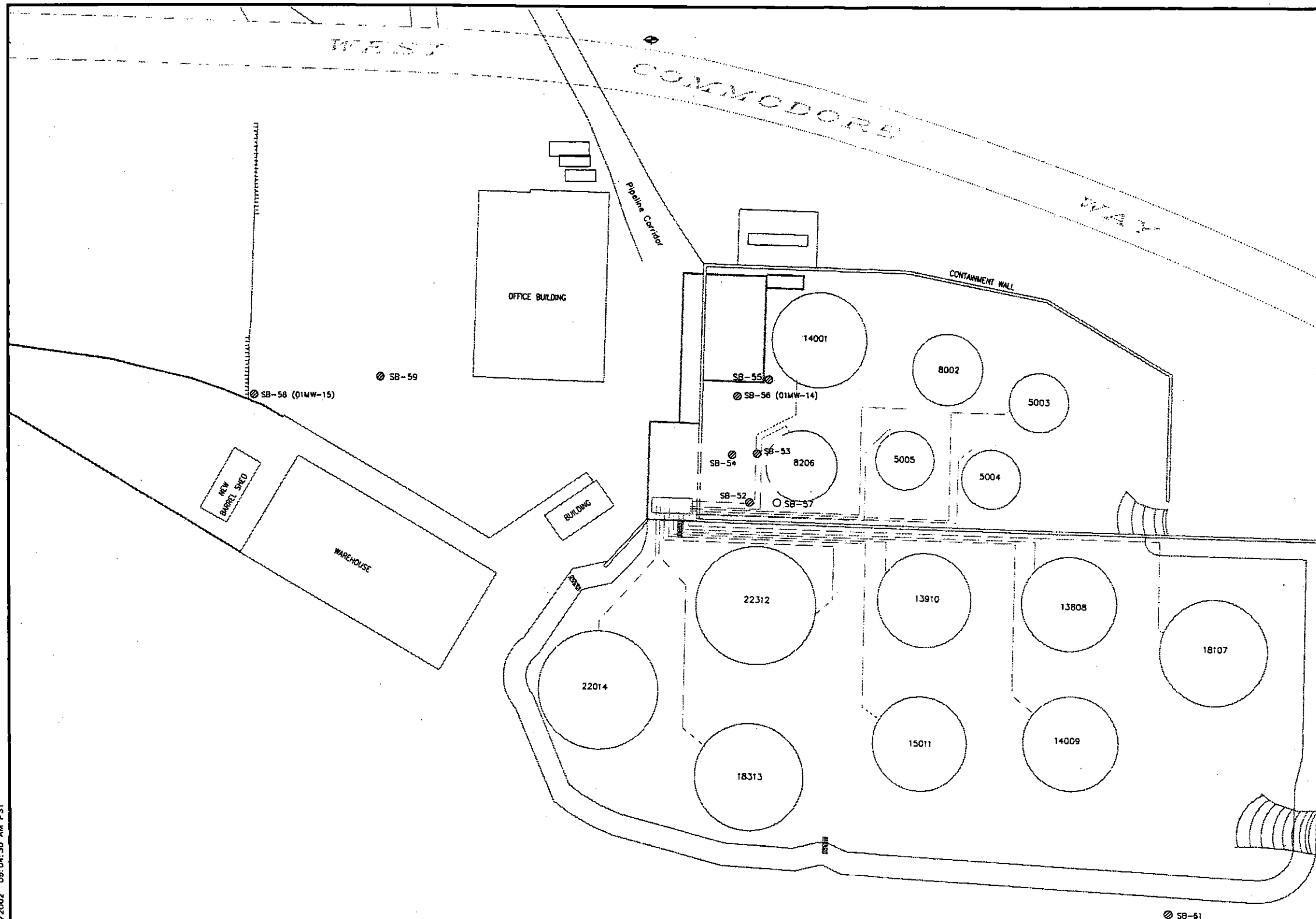
- ⊙ SOIL BORING
- SURFACE SAMPLE
- ◊ SURVEY MONUMENT

CITY OF SEATTLE
TBM #9962 = EL. 79.61



**FOSTER WHEELER
ENVIRONMENTAL CORPORATION**

Figure 3-1.
Locations of Phase II Soil Borings
Hand Auger Screening Borings at
2737 West Commodore Way
Seattle, Washington

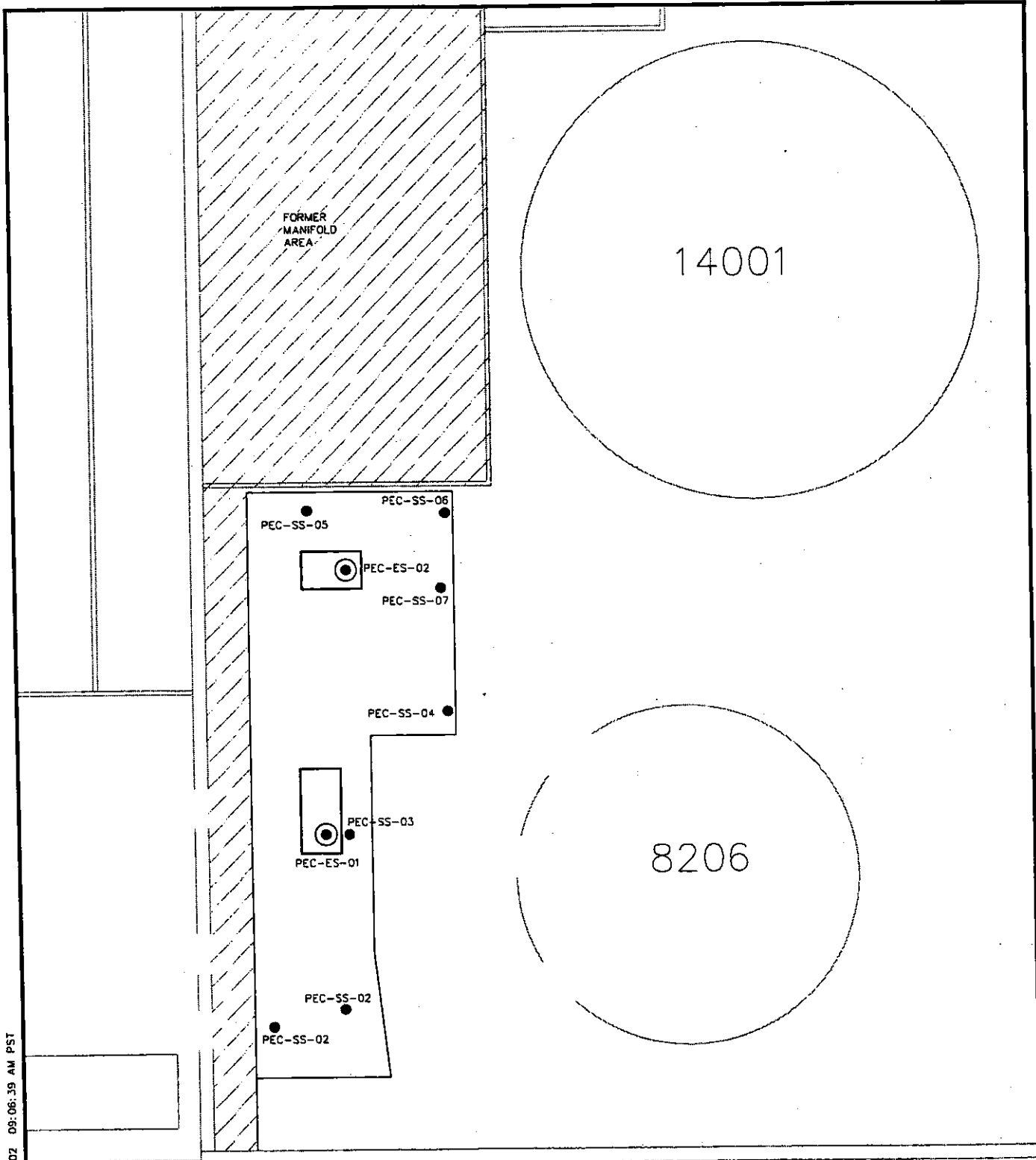


LEGEND

- SOIL BORING
- NEAR-SURFACE SAMPLE
- ⊕ SURVEY MONUMENT

FOSTER WHEELER
ENVIRONMENTAL CORPORATION
Figure 3-2
 Locations of Phase III Soil Borings

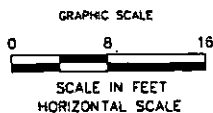
I:\Projects\23063312\dwg\ETI0FG36.dwg 11/26/2002 09:06:39 AM PST



LEGEND

- NEAR-SURFACE SAMPLE
- ⊙ SUB-SURFACE SAMPLE
- EXTENT OF SURFACE EXCAVATION
- EXTENT OF SUB-SURFACE EXCAVATION

 PAVED AREA



**FOSTER  WHEELER
ENVIRONMENTAL CORPORATION**

Figure 5-1
Removal Area Limits and
Confirmation Sample Locations
Seattle, Washington

TABLES

Table 3-1. Analytical Results for PCP in Soil

Sample	PCP (mg/Kg)
MTCA^{1/}	8.33
Former PCP/Diesel Mixing Area	
SS-01	3.870
SS-02	< 1.25
SS-03	< 2.50
SS-04	< 0.500
SB-01-0.6	0.930
SB-01-2	<0.250
SB-01-5	0.0871
SB-01-10	0.0812
SB-01-14	0.0578
SB-02-0.6	1.15
SB-02-2	<0.250
SB-02-5	0.0615
SB-02-10	0.0613
SB-02-14	0.0585
SB-03-0.6	202
SB03B (2 ft)	<0.500
SB-04-0.6	803 ✓
SB-04-2	1.26
SB-04-5	20.9 ✓
SB-04-10	0.2330 ✓
SB-05-0.6	2.18
SB-05-2	0.0761
SB-05-5	0.264
SB-05-10	0.0981
SB-53-2	0.0916
SB-53-5	<0.0500
SB-53-10	<0.0500

Sample	PCP (mg/Kg)
MTCA^{1/}	8.33
Former PCP/Diesel Mixing Area	
SB-54-2	0.181
SB-54-5	<0.0500
SB-54-10	0.0780
SB-55-2.5	<0.0500
SB-55-6	0.174
SB-55-10	0.0770
SB-56-2.5	<0.500
SB-56-5	8.88 ✓
SB-56-10	0.0765
SB-57-1.5	<0.0500
New Barrel Shed	
SB-06-5	< 0.250
SB-06-10	0.0548
SB-06-15	0.0548
SB-07-5	< 0.250
SB-07-10	< 0.250
SB-07-15	0.0572
SB-08-5	0.0560
SB-58-2	<0.500
SB-58-5	<0.0500
SB-58-10	<0.0500
SB-58-15	0.159
SB-58-25	<0.0500
Former Barrel Shed	
SB-59-5	<0.500
SB-59-15	<0.0500

^{1/}Results above MTCA Method B carcinogenic cleanup level in bold and italics.

Table 5-1. Analytical Results for Confirmation Samples

Sample	PCP (mg/Kg)
MTCA^{1/}	8.33
PEC-ES-01	1.05
PEC-SS-01	< 0.250
PEC-SS-02	< 0.0500
PEC-SS-03	0.0754
PEC-ES-02	1.01
PEC-SS-04	< 0.0500
PEC-SS-05	< 0.0500
PEC-SS-06	< 0.0500
PEC-SS-07	< 0.0500

^{1/}Results above MTCA Method B carcinogenic cleanup level in bold and italics



STATE OF WASHINGTON
DEPARTMENT OF ECOLOGY

Northwest Regional Office • 3190 160th Avenue SE • Bellevue, Washington 98008-5452 • (425) 649-7000

August 22, 2002

Mr. Bryan Graham
Foster Wheeler Environmental
12100 NE 195th Street, Suite 200
Bothell, WA. 98011

Dear Mr. Graham,

Re: Request for Review: Voluntary Cleanup Program # NW0931
Time Oil Terminal Property 01-600, 2737 West Commodore Way, Seattle, WA.

Thank you for submitting your reports for Ecology's review. Ecology appreciates your initiative in pursuing a voluntary cleanup under the Model Toxics Control Act (MTCA).

The Washington State Department of Ecology's Toxics Cleanup Program has reviewed the following information regarding the Time Oil Terminal Property 01-600 located at 2737 West Commodore Way, Seattle, WA:

1. Report titled "Final Limited Soil Removal Activity Work Plan For Former PCP/Diesel Mixing Area at 2737 West Commodore Way Seattle, Washington, prepared by Foster Wheeler Environmental Corporation, Bothell, WA, dated July 3, 2002.
2. Facsimile transmittal of amended Figure 3-2 showing "Anticipated Excavation Areas" prepared by Foster Wheeler Environmental Corporation, Bothell, WA, dated August 7, 2002.
3. Report titled "Final Environmental Assessment: Phase II PCP/Diesel Mixing Areas at 2737 West Commodore Way Seattle, Washington, prepared by Foster Wheeler Environmental Corporation, Bothell, WA, dated June 4, 2001.

Based upon the information listed above, Ecology has no objections to proceeding with the proposed remediation of PCP-impacted soil at this portion of the property (Former PCP/Diesel Mixing Area). It is understood by Ecology that further remediation will be performed at the site to address petroleum-impacted media. Ecology believes that, in order to address other contaminant issues not related to the cleanup of PCP-impacted soil at the Former PCP/Diesel Mixing Area, an environmental assessment plan and a remediation



APPENDIX B
ECOLOGY CORRESPONDENCE



STATE OF WASHINGTON

DEPARTMENT OF ECOLOGY

Northwest Regional Office • 3190 160th Avenue SE • Bellevue, Washington 98008-5452 • (425) 649-7000

July 25, 2002

Mr. Bryan Graham
Foster Wheeler Environmental
12100 NE 195th Street, Suite 200
Bothell WA 98011

Dear Mr. Bryan Graham:

Re: Request for Review: Independent Remedial Action
Time Oil Terminal, 2737 West Commodore Way, Seattle WA 98199

Thank you for submitting the independent remedial action report(s) for this site for Ecology's review. Ecology appreciates your initiative in pursuing a voluntary cleanup under the Model Toxics Control Act.

This is to acknowledge receipt of your *Request* and your \$500 deposit. A copy of the *Request* form is enclosed. All correspondence relating to this project should include the site name and a reference to the TCP identification number NW0931.

The Department of Ecology (Ecology) will publish a notice in the *Site Register* that we have received the report(s) and of your request for Ecology review of the independent remedial action. The *Site Register* is a bi-weekly publication regarding sites undergoing cleanup or remedial action throughout the state.

If you have any questions about this letter or the Voluntary Cleanup Program, please do not hesitate to call me at (425) 649-4446.

Sincerely,

A handwritten signature in black ink that reads "Theresa L. Fisher" with a circled initial "F".

Theresa L. Fisher
Voluntary Cleanup Program Administrator

TLF: lg
Enclosure



APPENDIX D
ANALYTICAL REPORTS



Seattle 11720 North Creek Pkwy N, Suite 400, Bothell, WA 98011-8244
425.420.9200 fax 425.420.9210
Spokane East 11115 Montgomery, Suite B, Spokane, WA 99206-4776
509.924.9200 fax 509.924.9298
Portland 9405 SW Nimbus Avenue, Beaverton, OR 97008-7132
503.906.9200 fax 503.906.9210
Bend 20332 Empire Avenue, Suite F-1, Bend, OR 97701-5711
541.383.9310 fax 541.382.7588

16 September 2002

Bryan Graham
Foster Wheeler Environmental Corporation
12100 NE 195th St
Bothell, WA/USA 98011
RE: PCP

Enclosed are the results of analyses for samples received by the laboratory on 09/12/02 14:15. If you have any questions concerning this report, please feel free to contact me.

Sincerely,

Emanuel Hignutt For Amar Gill
Project Manager



Seattle 11720 North Creek Pkwy N, Suite 400, Bothell, WA 98011-8244
 425.420.9200 fax 425.420.9210
 Spokane East 11115 Montgomery, Suite B, Spokane, WA 99206-4776
 509.924.9200 fax 509.924.9290
 Portland 9405 SW Nimbus Avenue, Beaverton, OR 97008-7132
 503.906.9200 fax 503.906.9210
 Bend 20332 Empire Avenue, Suite F-1, Bend, OR 97701-5711
 541.383.9310 fax 541.382.7588

Foster Wheeler Environmental Corporation
 12100 NE 195th St
 Bothell WA/USA, 98011

Project: PCP
 Project Number: [none]
 Project Manager: Bryan Graham

Reported:
 09/16/02 09:54

ANALYTICAL REPORT FOR SAMPLES

Sample ID	Laboratory ID	Matrix	Date Sampled	Date Received
PEC-ES-01	B2I0232-01	Soil	09/12/02 10:45	09/12/02 14:15
PEC-SS-01	B2I0232-02	Soil	09/12/02 11:10	09/12/02 14:15
PEC-SS-02	B2I0232-03	Soil	09/12/02 11:20	09/12/02 14:15
PEC-SS-03	B2I0232-04	Soil	09/12/02 11:30	09/12/02 14:15

North Creek Analytical - Bothell

The results in this report apply to the samples analyzed in accordance with the chain of custody document. This analytical report must be reproduced in its entirety.

Emanuel Hignutt For Amar Gill, Project Manager

North Creek Analytical, Inc.
 Environmental Laboratory Network



Seattle 11720 North Creek Pkwy N, Suite 400, Bothell, WA 98011-8244
 425.420.9200 fax 425.420.9210
 Spokane East 11115 Montgomery, Suite B, Spokane, WA 99206-4776
 509.924.9200 fax 509.924.9290
 Portland 9405 SW Nimbus Avenue, Beaverton, OR 97008-7132
 503.906.9200 fax 503.906.9210
 Bend 20332 Empire Avenue, Suite F-1, Bend, OR 97701-5711
 541.383.9310 fax 541.382.7588

Foster Wheeler Environmental Corporation
 12100 NE 195th St
 Bothell WA/USA, 98011

Project: PCP
 Project Number: [none]
 Project Manager: Bryan Graham

Reported:
 09/16/02 09:54

Pentachlorophenol by GC/MS with Selected Ion Monitoring
North Creek Analytical - Bothell

Analyte	Result	Reporting Limit	Units	Dilution	Batch	Prepared	Analyzed	Method	Notes
PEC-ES-01 (B2I0232-01) Soil Sampled: 09/12/02 10:45 Received: 09/12/02 14:15									
Pentachlorophenol	1.05	0.0500	mg/kg dry	1	2112025	09/12/02	09/13/02	EPA 8270 Mod	
Surrogate: 2,4,6-TBP	87.3 %	20-173			"	"	"	"	
PEC-SS-01 (B2I0232-02) Soil Sampled: 09/12/02 11:10 Received: 09/12/02 14:15									
Pentachlorophenol	ND	0.250	mg/kg dry	5	2112025	09/12/02	09/13/02	EPA 8270 Mod	Q-32
Surrogate: 2,4,6-TBP	168 %	20-173			"	"	"	"	Q-32
PEC-SS-02 (B2I0232-03) Soil Sampled: 09/12/02 11:20 Received: 09/12/02 14:15									
Pentachlorophenol	ND	0.0500	mg/kg dry	1	2112025	09/12/02	09/13/02	EPA 8270 Mod	Q-32
Surrogate: 2,4,6-TBP	107 %	20-173			"	"	"	"	Q-32
PEC-SS-03 (B2I0232-04) Soil Sampled: 09/12/02 11:30 Received: 09/12/02 14:15									
Pentachlorophenol	0.0754	0.0500	mg/kg dry	1	2112025	09/12/02	09/13/02	EPA 8270 Mod	
Surrogate: 2,4,6-TBP	93.3 %	20-173			"	"	"	"	

North Creek Analytical - Bothell

The results in this report apply to the samples analyzed in accordance with the chain of custody document. This analytical report must be reproduced in its entirety.

Emanuel Hignutt For Amar Gill, Project Manager

North Creek Analytical, Inc.
 Environmental Laboratory Network



Seattle 11720 North Creek Pkwy N, Suite 400, Bothell, WA 98011-8244
 425.420.9200 fax 425.420.9210
 Spokane East 11115 Montgomery, Suite B, Spokane, WA 99206-4776
 509.924.9200 fax 509.924.9290
 Portland 9405 SW Nimbus Avenue, Beaverton, OR 97008-7132
 503.906.9200 fax 503.906.9210
 Bend 20332 Empire Avenue, Suite F-1, Bend, OR 97701-5711
 541.383.9310 fax 541.382.7588

Foster Wheeler Environmental Corporation
 12100 NE 195th St
 Bothell WA/USA, 98011

Project: PCP
 Project Number: [none]
 Project Manager: Bryan Graham

Reported:
 09/16/02 09:54

Physical Parameters by APHA/ASTM/EPA Methods
North Creek Analytical - Bothell

Analyte	Result	Reporting Limit	Units	Dilution	Batch	Prepared	Analyzed	Method	Notes
PEC-ES-01 (B2I0232-01) Soil Sampled: 09/12/02 10:45 Received: 09/12/02 14:15									
Dry Weight	81.3	1.00	%	1	2I12026	09/12/02	09/13/02	BSOPSPL003R07	
PEC-SS-01 (B2I0232-02) Soil Sampled: 09/12/02 11:10 Received: 09/12/02 14:15									
Dry Weight	83.7	1.00	%	1	2I12026	09/12/02	09/13/02	BSOPSPL003R07	
PEC-SS-02 (B2I0232-03) Soil Sampled: 09/12/02 11:20 Received: 09/12/02 14:15									
Dry Weight	82.2	1.00	%	1	2I12026	09/12/02	09/13/02	BSOPSPL003R07	
PEC-SS-03 (B2I0232-04) Soil Sampled: 09/12/02 11:30 Received: 09/12/02 14:15									
Dry Weight	79.1	1.00	%	1	2I12026	09/12/02	09/13/02	BSOPSPL003R07	

North Creek Analytical - Bothell

The results in this report apply to the samples analyzed in accordance with the chain of custody document. This analytical report must be reproduced in its entirety.

Emanuel Hignutt For Amar Gill, Project Manager

North Creek Analytical, Inc.
 Environmental Laboratory Network



Seattle 11720 North Creek Pkwy N, Suite 400, Bothell, WA 98011-8244
 425.420.9200 fax 425.420.9210
 Spokane East 11115 Montgomery, Suite B, Spokane, WA 99206-4776
 509.924.9200 fax 509.924.9290
 Portland 9405 SW Nimbus Avenue, Beaverton, OR 97008-7132
 503.906.9200 fax 503.906.9210
 Bend 20332 Empire Avenue, Suite F-1, Bend, OR 97701-5711
 541.383.9310 fax 541.382.7588

Foster Wheeler Environmental Corporation 12100 NE 195th St Bothell WA/USA, 98011	Project: PCP Project Number: [none] Project Manager: Bryan Graham	Reported: 09/16/02 09:54
----------------------------------------------------------------------------------------	-------------------------------------------------------------------------	-----------------------------

Pentachlorophenol by GC/MS with Selected Ion Monitoring - Quality Control
North Creek Analytical - Bothell

Analyte	Result	Reporting Limit	Units	Spike Level	Source Result	%REC	%REC Limits	RPD	RPD Limit	Notes
Batch 2I12025: Prepared 09/12/02 Using EPA 3550B										
Blank (2I12025-BLK1)										
Pentachlorophenol	ND	0.0500	mg/kg							
Surrogate: 2,4,6-TBP	1.30		"	1.67		77.8	20-173			
LCS (2I12025-BS1)										
Pentachlorophenol	0.322	0.0500	mg/kg	0.667		48.3	24-141			
Surrogate: 2,4,6-TBP	1.16		"	1.67		69.5	20-173			
LCS Dup (2I12025-BSD1)										
Pentachlorophenol	0.307	0.0500	mg/kg	0.667		46.0	24-141	4.77	50	
Surrogate: 2,4,6-TBP	1.47		"	1.67		88.0	20-173			
Matrix Spike (2I12025-MS1) Source: B2I0232-02										
Pentachlorophenol	0.487	0.250	mg/kg dry	0.791	ND	61.6	20-167			Q-32
Surrogate: 2,4,6-TBP	6.83		"	1.98		345	20-173			Q-32,S-04
Matrix Spike Dup (2I12025-MSD1) Source: B2I0232-02										
Pentachlorophenol	0.623	0.250	mg/kg dry	0.794	ND	78.5	20-167	24.5	50	Q-32
Surrogate: 2,4,6-TBP	6.39		"	1.98		323	20-173			Q-32,S-04

North Creek Analytical - Bothell

The results in this report apply to the samples analyzed in accordance with the chain of custody document. This analytical report must be reproduced in its entirety.


 Emanuel Hignutt For Amar Gill, Project Manager

North Creek Analytical, Inc.
 Environmental Laboratory Network



Seattle 11720 North Creek Pkwy N, Suite 400, Bothell, WA 98011-8244
 425.420.9200 fax 425.420.9210
 Spokane East 11115 Montgomery, Suite B, Spokane, WA 99208-4778
 509.924.9200 fax 509.924.9290
 Portland 9405 SW Nimbus Avenue, Beaverton, OR 97008-7132
 503.906.9200 fax 503.906.9210
 Bend 20332 Empire Avenue, Suite F-1, Bend, OR 97701-5711
 541.383.9310 fax 541.382.7588

Foster Wheeler Environmental Corporation
 12100 NE 195th St
 Bothell WA/USA, 98011

Project: PCP
 Project Number: [none]
 Project Manager: Bryan Graham

Reported:
 09/16/02 09:54

**Physical Parameters by APHA/ASTM/EPA Methods - Quality Control
 North Creek Analytical - Bothell**

Analyte	Result	Reporting Limit	Units	Spike Level	Source Result	%REC	%REC Limits	RPD	RPD Limit	Notes
---------	--------	-----------------	-------	-------------	---------------	------	-------------	-----	-----------	-------

Batch 2I12026: Prepared 09/12/02 Using Dry Weight

Blank (2I12026-BLK1)

Dry Weight	100	1.00	%							
------------	-----	------	---	--	--	--	--	--	--	--

North Creek Analytical - Bothell

The results in this report apply to the samples analyzed in accordance with the chain of custody document. This analytical report must be reproduced in its entirety.

Emanuel Hignutt For Amar Gill, Project Manager

North Creek Analytical, Inc.
 Environmental Laboratory Network



Seattle 11720 North Creek Pkwy N, Suite 400, Bothell, WA 98011-8244
425.420.9200 fax 425.420.9210
Spokane East 11115 Montgomery, Suite B, Spokane, WA 99206-4776
509.924.9200 fax 509.924.9290
Portland 9405 SW Nimbus Avenue, Beaverton, OR 97008-7132
503.906.9200 fax 503.906.9210
Bend 20332 Empire Avenue, Suite F-1, Bend, OR 97701-5711
541.383.9310 fax 541.382.7588

Foster Wheeler Environmental Corporation
12100 NE 195th St
Bothell WA/USA, 98011

Project: PCP
Project Number: [none]
Project Manager: Bryan Graham

Reported:
09/16/02 09:54

Notes and Definitions

- Q-32 The internal standard associated with this analyte was outside normal acceptance criteria. Re-analysis verified the original result.
- S-04 The surrogate recovery for this sample is outside of established control limits due to a sample matrix effect.
- DET Analyte DETECTED
- ND Analyte NOT DETECTED at or above the reporting limit
- NR Not Reported
- dry Sample results reported on a dry weight basis
- RPD Relative Percent Difference

North Creek Analytical - Bothell

The results in this report apply to the samples analyzed in accordance with the chain of custody document. This analytical report must be reproduced in its entirety.

Emanuel Hignutt For Amar Gill, Project Manager

North Creek Analytical, Inc.
Environmental Laboratory Network

Page 6 of 6



Seattle 11720 North Creek Pkwy N, Suite 400, Bothell, WA 98011-8244
425.420.9200 fax 425.420.9210
Spokane East 11115 Montgomery, Suite B, Spokane, WA 99206-4776
509.924.9200 fax 509.924.9290
Portland 9405 SW Nimbus Avenue, Beaverton, OR 97008-7132
503.906.9200 fax 503.906.9210
Bend 20332 Empire Avenue, Suite F-T, Bend, OR 97701-5711
541.383.9310 fax 541.382.7588

18 September 2002

Bryan Graham
Foster Wheeler Environmental Corporation
12100 NE 195th St
Bothell, WA/USA 98011

RE: PCP

Enclosed are the results of analyses for samples received by the laboratory on 09/17/02 13:55. If you have any questions concerning this report, please feel free to contact me.

Sincerely,

Emanuel Hignutt For Amar Gill
Project Manager



Seattle 11720 North Creek Pkwy N, Suite 400, Bothell, WA 98011-8244
 425.420.9200 fax 425.420.9210
 Spokane East 11115 Montgomery, Suite B, Spokane, WA 99206-4776
 509.924.9200 fax 509.924.9290
 Portland 9405 SW Nimbus Avenue, Beaverton, OR 97008-7132
 503.906.9200 fax 503.906.9210
 Bend 20332 Empire Avenue, Suite F-1, Bend, OR 97701-5711
 541.383.9310 fax 541.382.7588

Foster Wheeler Environmental Corporation
 12100 NE 195th St
 Bothell WA/USA, 98011

Project: PCP
 Project Number: [none]
 Project Manager: Bryan Graham

Reported:
 09/18/02 16:37

ANALYTICAL REPORT FOR SAMPLES

Sample ID	Laboratory ID	Matrix	Date Sampled	Date Received
PEC-ES-02	B2I0321-01	Soil	09/17/02 10:10	09/17/02 13:55
PEC-SS-04	B2I0321-02	Soil	09/17/02 10:35	09/17/02 13:55
PEC-SS-05	B2I0321-03	Soil	09/17/02 10:40	09/17/02 13:55
PEC-SS-06	B2I0321-04	Soil	09/17/02 12:05	09/17/02 13:55
PEC-SS-07	B2I0321-05	Soil	09/17/02 12:10	09/17/02 13:55

North Creek Analytical - Bothell

The results in this report apply to the samples analyzed in accordance with the chain of custody document. This analytical report must be reproduced in its entirety.

Emanuel Hignutt For Amar Gill, Project Manager

North Creek Analytical, Inc.
 Environmental Laboratory Network



Seattle 11720 North Creek Pkwy N, Suite 400, Bothell, WA 98011-8244
 425.420.9200 fax 425.420.9210
 Spokane East 11115 Montgomery, Suite B, Spokane, WA 99206-4776
 509.924.9200 fax 509.924.9290
 Portland 9405 SW Nimbus Avenue, Beaverton, OR 97008-7132
 503.906.9200 fax 503.906.9210
 Bend 20332 Empire Avenue, Suite F-1, Bend, OR 97701-5711
 541.383.9310 fax 541.382.7588

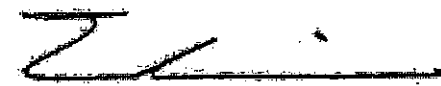
Foster Wheeler Environmental Corporation 12100 NE 195th St Bothell WA/USA, 98011	Project: PCP Project Number: [none] Project Manager: Bryan Graham	Reported: 09/18/02 16:37
----------------------------------------------------------------------------------------	-------------------------------------------------------------------------	-----------------------------

**Pentachlorophenol by GC/MS with Selected Ion Monitoring
 North Creek Analytical - Bothell**

Analyte	Result	Reporting Limit	Units	Dilution	Batch	Prepared	Analyzed	Method	Notes
PEC-ES-02 (B2I0321-01) Soil Sampled: 09/17/02 10:10 Received: 09/17/02 13:55									
Pentachlorophenol	1.01	0.0500	mg/kg dry	1	2I17009	09/17/02	09/18/02	EPA 8270 Mod	
Surrogate: 2,4,6-TBP	85.6 %	19-138			"	"	"	"	
PEC-SS-04 (B2I0321-02) Soil Sampled: 09/17/02 10:35 Received: 09/17/02 13:55									
Pentachlorophenol	ND	0.0500	mg/kg dry	1	2I17009	09/17/02	09/18/02	EPA 8270 Mod	
Surrogate: 2,4,6-TBP	80.4 %	19-138			"	"	"	"	
PEC-SS-05 (B2I0321-03) Soil Sampled: 09/17/02 10:40 Received: 09/17/02 13:55									
Pentachlorophenol	ND	0.0500	mg/kg dry	1	2I17009	09/17/02	09/18/02	EPA 8270 Mod	
Surrogate: 2,4,6-TBP	64.7 %	19-138			"	"	"	"	
PEC-SS-06 (B2I0321-04) Soil Sampled: 09/17/02 12:05 Received: 09/17/02 13:55									
Pentachlorophenol	ND	0.0500	mg/kg dry	1	2I17009	09/17/02	09/18/02	EPA 8270 Mod	
Surrogate: 2,4,6-TBP	67.2 %	19-138			"	"	"	"	
PEC-SS-07 (B2I0321-05) Soil Sampled: 09/17/02 12:10 Received: 09/17/02 13:55									
Pentachlorophenol	ND	0.0500	mg/kg dry	1	2I17009	09/17/02	09/18/02	EPA 8270 Mod	
Surrogate: 2,4,6-TBP	108 %	19-138			"	"	"	"	

North Creek Analytical - Bothell

The results in this report apply to the samples analyzed in accordance with the chain of custody document. This analytical report must be reproduced in its entirety.


 Emanuel Hignutt For Amar Gill, Project Manager

North Creek Analytical, Inc.
 Environmental Laboratory Network



Seattle 11720 North Creek Pkwy N, Suite 400, Bothell, WA 98011-8244
 425.420.9200 fax 425.420.9210
 Spokane East 11115 Montgomery, Suite B, Spokane, WA 99206-4776
 509.924.9200 fax 509.924.9290
 Portland 9405 SW Nimbus Avenue, Beaverton, OR 97008-7132
 503.906.9200 fax 503.906.9210
 Bend 20332 Empire Avenue, Suite F-1, Bend, OR 97701-5711
 541.383.9310 fax 541.382.7588

Foster Wheeler Environmental Corporation 12100 NE 195th St Bothell WA/USA, 98011	Project: PCP Project Number: [none] Project Manager: Bryan Graham	Reported: 09/18/02 16:37
----------------------------------------------------------------------------------------	-------------------------------------------------------------------------	-----------------------------

**Physical Parameters by APHA/ASTM/EPA Methods
 North Creek Analytical - Bothell**

Analyte	Result	Reporting Limit	Units	Dilution	Batch	Prepared	Analyzed	Method	Notes
PEC-ES-02 (B2I0321-01) Soil Sampled: 09/17/02 10:10 Received: 09/17/02 13:55									
Dry Weight	81.4	1.00	%	1	2I17024	09/17/02	09/18/02	BSOPSPL003R07	
PEC-SS-04 (B2I0321-02) Soil Sampled: 09/17/02 10:35 Received: 09/17/02 13:55									
Dry Weight	84.2	1.00	%	1	2I17024	09/17/02	09/18/02	BSOPSPL003R07	
PEC-SS-05 (B2I0321-03) Soil Sampled: 09/17/02 10:40 Received: 09/17/02 13:55									
Dry Weight	82.5	1.00	%	1	2I17024	09/17/02	09/18/02	BSOPSPL003R07	
PEC-SS-06 (B2I0321-04) Soil Sampled: 09/17/02 12:05 Received: 09/17/02 13:55									
Dry Weight	84.3	1.00	%	1	2I17024	09/17/02	09/18/02	BSOPSPL003R07	
PEC-SS-07 (B2I0321-05) Soil Sampled: 09/17/02 12:10 Received: 09/17/02 13:55									
Dry Weight	84.2	1.00	%	1	2I17024	09/17/02	09/18/02	BSOPSPL003R07	

North Creek Analytical - Bothell

The results in this report apply to the samples analyzed in accordance with the chain of custody document. This analytical report must be reproduced in its entirety.

Emanuel Hignutt For Amar Gill, Project Manager

North Creek Analytical, Inc.
Environmental Laboratory Network



Seattle 11720 North Creek Pkwy N, Suite 400, Bothell, WA 98011-8244
 425.420.9200 fax 425.420.9210
 Spokane East 11115 Montgomery, Suite B, Spokane, WA 99206-4776
 509.924.9200 fax 509.924.9290
 Portland 9405 SW Nimbus Avenue, Beaverton, OR 97008-7192
 503.906.9200 fax 503.906.9210
 Bend 20332 Empire Avenue, Suite F-1, Bend, OR 97701-5711
 541.383.9310 fax 541.382.7588

Foster Wheeler Environmental Corporation
 12100 NE 195th St
 Bothell WA/USA, 98011

Project: PCP
 Project Number: [none]
 Project Manager: Bryan Graham

Reported:
 09/18/02 16:37

Pentachlorophenol by GC/MS with Selected Ion Monitoring - Quality Control
North Creek Analytical - Bothell

Analyte	Result	Reporting Limit	Units	Spike Level	Source Result	%REC	%REC Limits	RPD	RPD Limit	Notes
---------	--------	-----------------	-------	-------------	---------------	------	-------------	-----	-----------	-------

Batch 2117009: Prepared 09/17/02 Using EPA 3550B

Blank (2117009-BLK1)

Pentachlorophenol	ND	0.0500	mg/kg							
Surrogate: 2,4,6-TBP	1.34		"	1.67		80.2	19-138			

LCS (2117009-BS1)

Pentachlorophenol	0.326	0.0500	mg/kg	0.667		48.9	24-141			
Surrogate: 2,4,6-TBP	1.27		"	1.67		76.0	19-138			

LCS Dup (2117009-BSD1)

Pentachlorophenol	0.318	0.0500	mg/kg	0.667		47.7	24-141	2.48	50	
Surrogate: 2,4,6-TBP	1.14		"	1.67		68.3	19-138			

North Creek Analytical - Bothell

The results in this report apply to the samples analyzed in accordance with the chain of custody document. This analytical report must be reproduced in its entirety.

Emanuel Hignutt For Amar Gill, Project Manager

North Creek Analytical, Inc.
 Environmental Laboratory Network

Page 4 of 6



Seattle 11720 North Creek Pkwy N, Suite 400, Bothell, WA 98011-8244
 425.420.9200 fax 425.420.9210
 Spokane East 11115 Montgomery, Suite B, Spokane, WA 99206-4778
 509.924.9200 fax 509.924.9290
 Portland 9405 SW Nimbus Avenue, Beaverton, OR 97008-7132
 503.906.9200 fax 503.906.9210
 Bend 20332 Empire Avenue, Suite F-1, Bend, OR 97701-5711
 541.383.9310 fax 541.382.7588

Foster Wheeler Environmental Corporation
 12100 NE 195th St
 Bothell WA/USA, 98011

Project: PCP
 Project Number: [none]
 Project Manager: Bryan Graham

Reported:
 09/18/02 16:37

Physical Parameters by APHA/ASTM/EPA Methods - Quality Control
North Creek Analytical - Bothell

Analyte	Result	Reporting Limit	Units	Spike Level	Source Result	%REC	%REC Limits	RPD	RPD Limit	Notes
---------	--------	-----------------	-------	-------------	---------------	------	-------------	-----	-----------	-------

Batch 2I17024: Prepared 09/17/02 Using Dry Weight

Blank (2I17024-BLK1)

Dry Weight	100	1.00	%							
------------	-----	------	---	--	--	--	--	--	--	--

North Creek Analytical - Bothell

The results in this report apply to the samples analyzed in accordance with the chain of custody document. This analytical report must be reproduced in its entirety.

Emanuel Hignutt For Amar Gill, Project Manager

North Creek Analytical, Inc.
Environmental Laboratory Network



Seattle 11720 North Creek Pkwy N, Suite 400, Bothell, WA 98011-8244
 425.420.9200 fax 425.420.9210
 Spokane East 11115 Montgomery, Suite B, Spokane, WA 99206-4776
 509.924.9200 fax 509.924.9290
 Portland 9405 SW Nimbus Avenue, Beaverton, OR 97008-7132
 503.906.9200 fax 503.906.9210
 Bend 20332 Empire Avenue, Suite F-1, Bend, OR 97701-5711
 541.383.9310 fax 541.382.7588

Foster Wheeler Environmental Corporation 12100 NE 195th St Bothell WA/USA, 98011	Project: PCP Project Number: [none] Project Manager: Bryan Graham	Reported: 09/18/02 16:37
----------------------------------------------------------------------------------------	-------------------------------------------------------------------------	-----------------------------

Notes and Definitions

- DET Analyte DETECTED
- ND Analyte NOT DETECTED at or above the reporting limit
- NR Not Reported
- dry Sample results reported on a dry weight basis
- RPD Relative Percent Difference



11720 North Creek Pkwy N, Suite 400, Bothell, WA 98011-8244
 East 11115 Montgomery, Suite B, Spokane, WA 99206-4776
 9405 S.W. Nimbus Avenue, Beaverton, OR 97008-7132
 20332 Empire Avenue, Suite F-J, Bend, OR 97701-5711

(425) 420-9200 FAX 420-9210
 (509) 924-9200 FAX 924-9290
 (503) 906-9200 FAX 906-9210
 (541) 383-9310 FAX 382-7588

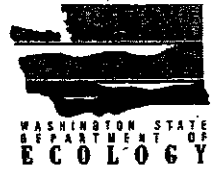
CHAIN OF CUSTODY REPORT

Work Order #: **BZIO321**

CLIENT: Time Oil REPORT TO: Bryan Graham ADDRESS: 12100 NE 195th St. 200 Bothell, WA 98011 PHONE: 425-482-7600 FAX: 425-482-7641		INVOICE TO: Scott Sloan Time Oil P.O. NUMBER:	
PROJECT NAME: Time Oil PROJECT NUMBER: 2306.3312.0007.00002 SAMPLED BY: Jim Rogers		TURNAROUND REQUEST IN BUSINESS DAYS* Organic & Inorganic Analyses: 10 7 5 4 3 2 1 <1 Petroleum Hydrocarbon Analyses: 5 4 3 2 1 <1 STD. OTHER 12 hour Please Specify *Turnaround Requests less than standard may incur Rush Charges.	
REQUESTED ANALYSES		NCA WO ID	
CLIENT SAMPLE IDENTIFICATION 1. PEC-SS-02 2. PEC-SS-04 3. PEC-SS-05 4. PEC-SS-06 5. PEC-SS-07	SAMPLING DATE/TIME 9/17 10:10 9/17 10:35 9/17 10:40 9/17 12:05 9/17 12:10	# OF CONT. 1 1 1 1 1	COMMENTS 12 hour TAT ↓ ↓ ↓
RELINQUISHED BY: James Rogers PRINT NAME: James Rogers FIRM: FWENC		RECEIVED BY: Scott Sloan PRINT NAME: Scott Sloan FIRM: NCA	
DATE: 9/17 TIME: 1415		DATE: 9/17 TIME: 1415	
RELINQUISHED BY:		RECEIVED BY:	
PRINT NAME:		PRINT NAME:	
FIRM:		FIRM:	
DATE:		DATE:	
TIME:		TIME:	
ADDITIONAL REMARKS:			

Voluntary Cleanup Program

Washington State Department of Ecology – Toxics Cleanup Program



SITE SUMMARY

This form is a required component of your request for assistance under the Voluntary Cleanup Program. Please include it with your application, consultation fee, and terrestrial ecological evaluation form (if applicable).

WHICH OF THE FOLLOWING APPLY TO YOUR SITE?

- You are requesting assistance on a planned cleanup.
- You are requesting assistance on an ongoing cleanup.
- You are requesting review of a completed cleanup.
- You are requesting review of monitoring reports.

PERSON/ORGANIZATION MAKING REQUEST FOR ASSISTANCE

Name: Bryan S. Graham			
Firm: Foster Wheeler Environmental			
Mailing address: 12100 NE 195 th Street, Suite 200			
City: Bothell	State: WA	Zip code: 98011	
Telephone number: 425-482-7600	Fax number: 425-482-7652	E-mail address: bgraham@fwenc.com	

WHICH BEST DESCRIBES YOUR INVOLVEMENT AT THIS SITE (CHECK AS MANY THAT APPLY)

Current Owner	Former Owner	Potential Purchaser	Current Operator	Former Operator	Environmental Consultant	Attorney	Insurance Carrier	Other
					X			
If other, please specify:								

SITE IDENTIFICATION

Name of site: Time Oil Company Former Petroleum Terminal				
Alternative name(s) for site:				
Site address: 2737 West Commodore Way				
City: Seattle	State: WA	Zip code: 98199-1233	County: King	UBI Number:
Township: 25N	Range: 03E	Section: S11	Quarter-Quarter: SE ¼ of SW ¼	
Latitude:	Degrees:	Minutes:	Seconds:	
Longitude:	Degrees:	Minutes:	Seconds:	

What method did you use to calculate latitude and longitude? NA

How many acres is the site? <1

Property type? Commercial Industrial Residential Other Please specify:

Is the property currently being used?

Are there plans for change in use? If yes, please specify:

STANDARD INDUSTRIAL CLASSIFICATION (SIC) CODES

Please list all that apply. If you do not know the SIC code(s), list the activities conducted at the site (i.e. automotive repair and maintenance, construction equipment storage, etc.)

SIC Code 4226

TANK INFORMATION

Please complete the table below for all above ground tanks (AST) and underground storage tanks (UST) existing or formerly existing on the property, including unregulated tanks.

TANK ID	AST/UST	SIZE	W/LEAK PRODUCT ENCOUNTERED?		IN EXCAVATION	TANK STATUS & DATE
			PRODUCT	ON/GW		
591	UST	3,000 gal	N	NA	NA	In use
951	UST	1,000 gal	N	NA	NA	In use
5003	AST	210,336	N	NA	NA	Temporarily closed
5004	AST	214,410	N	NA	NA	Temporarily closed
5005	AST	214,704	N	NA	NA	Temporarily closed
8002	AST	341,206	N	NA	NA	Temporarily closed
8206	AST	330,498	N	NA	NA	Temporarily closed
14001	AST	589,302	N	NA	NA	Temporarily closed
13808	AST	571,200	N	NA	NA	Temporarily closed
13910	AST	574,518	N	NA	NA	Temporarily closed
14009	AST	589,092	N	NA	NA	Temporarily closed
12811	AST	589,470	N	NA	NA	Temporarily closed
18107	AST	767,928	N	NA	NA	Temporarily closed
18313	AST	739,872	N	NA	NA	Temporarily closed
22014	AST	927,234	N	NA	NA	Temporarily closed
22312	AST	908,544	N	NA	NA	Temporarily closed

* Unleaded, leaded diesel, bunker-C, waste oil, heating oil, aviation fuel, other (please identify)

**Left in-place, removed, closed-in-place

SITE MAPS

Please include an area map that shows the general location of the site (mark the site location) and a site diagram that shows sampling and well locations.

DANGEROUS WASTE FACILITIES

Does the facility have a dangerous waste identification (WAD) number? WAD 0009591207

If yes, please specify.

SITE ASSESSMENT OR SITE REMEDIATION WORK COMPLETED TO-DATE

Has site assessment work been completed at the site? Yes

If yes, when? 2001 - 2002 Were the results reported to Ecology? Yes. A Phase I Environmental Assessment (August 2000) identified the use of PCP at the site as a potential issue. A Phase II investigation was conducted in the fall of 2000 and PCP-impacted soil was detected in the Former PCP/Diesel Mixing Area. Phase III activities conducted in March 2001 defined the extent of PCP-impacted soil. A Work Plan was submitted to Ecology for review in July 2002 under the VCP. No objections were found with the Plan.

Has site cleanup work been conducted at the site? None completed relative to PCP impacts

If yes, when? Were the results reported to Ecology?

Does contamination remain on-site after cleanup?

If yes, please describe the contamination?

INSTITUTIONAL CONTROLS (I.E. RESTRICTIVE COVENANT, ENGINEERED CONTROLS, FENCING)

Were institutional controls used at the site? If yes, please specify. None have been implemented. The area has always been secured by a locked fence.

DOCUMENTATION

Please list all known assessment and/or cleanup reports completed for the site. Include the title of the report, the name of the consulting firm that did the work, and the year it was completed.

TITLE	CONSULTING FIRM	DATE
Phase I Environmental Site Assessment	Foster Wheeler Environmental	August 2000
Phase II Environmental Site Assessment	Foster Wheeler Environmental	April 2001
Phase III Environmental Site Assessment	Foster Wheeler Environmental	December 2001
Final Limited Soil Removal Activity Work Plan for Former PCP/Diesel Mixing Area	Foster Wheeler Environmental	July 2002

METHODS & TREATMENT TECHNOLOGIES USED AT SITE

Please check all applicable boxes that apply to your site.

CLEANUP METHOD USED	SOIL	GROUND WATER	SURFACE WATER	DRINKING WATER	AIR	SEDIMENTS
Method A						
Method B	X					
Method C						
TREATMENT TECHNOLOGY USED	SOIL	GROUND WATER	SURFACE WATER	DRINKING WATER	AIR	SEDIMENTS
Air Sparging/Air Stripping						
Bioventing						
Capping (asphalt, concrete, topsoil, RCRA cover, soil-clay, synthetic membrane)						
Carbon Adsorption						
Containment On-Site						
Containment Off-Site						
Free-product Recovery						
In Situ Chemical Oxidation						
Natural Attenuation (dilution, volatilization, biodegradation, adsorption)						
Permeable Reactive Barriers						
Phytoremediation						
Soil Flushing						
Soil Vapor Extraction						
Thermal Desorption	X					
Other (please specify)						

DRINKING WATER & AQUATICS INFORMATION

Are there any drinking wells within ½ mile of the site? No If yes, how many?

Was a drinking water system affected? No If yes, was an alternate drinking water source provided?

Was the affected drinking water system public, private, or both? NA

Are there any creeks, streams, ponds, wetlands, or shorelands on or adjacent to the site? No Within ¼ mile of the site? Yes

If yes, where are they located? Salmon Bay is located approximately 400 feet north of the site.

Were they impacted by the contamination from the site? No

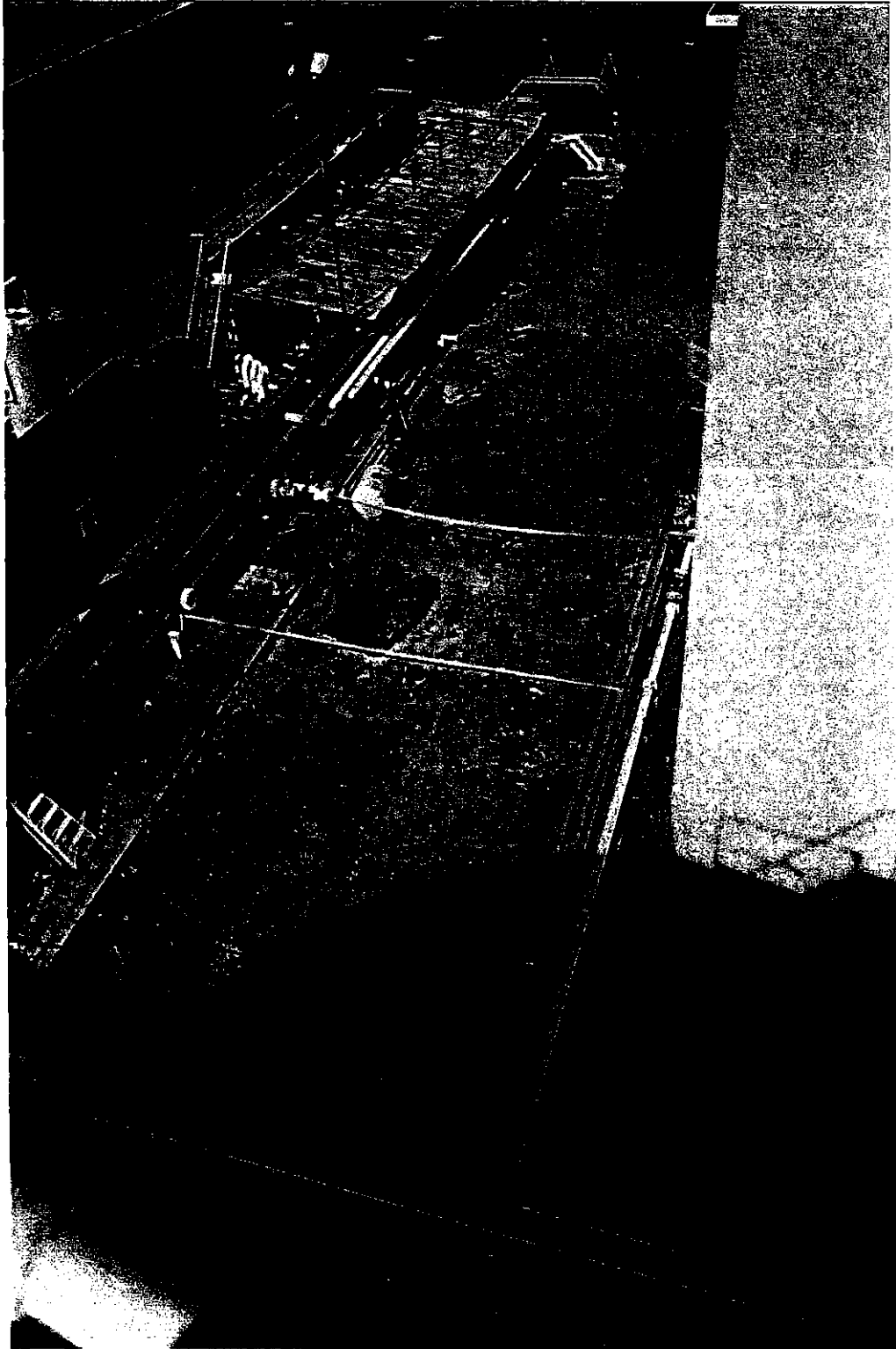
OWNER/OPERATOR HISTORY

Please complete as many of the below boxes as possible. For type of owner/operator, please use the following codes: (1) Private, (2) Municipal, (3) County, (4) Federal, (5) State, (6) Tribal, (7) Mixed, (8) Other, (9) Unknown, (10) Public
Entire Acquisition via Bankruptcy.

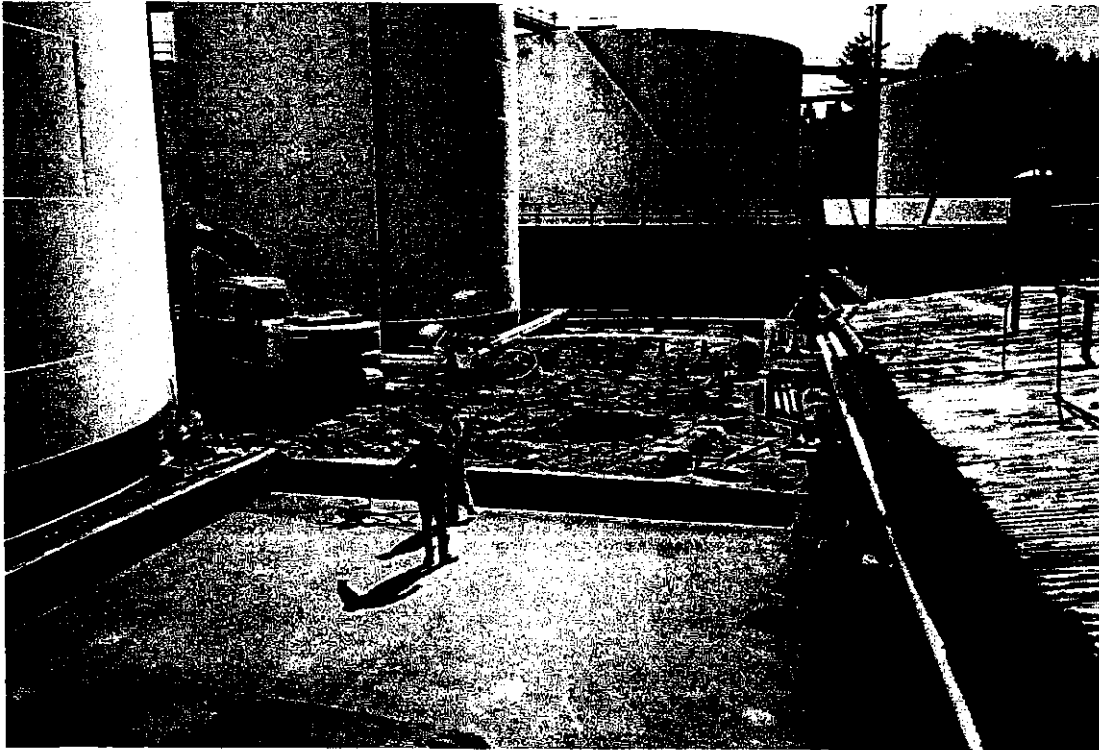
Current site owner: Time Oil Company	Type: Industrial (1)	
Street address: 2737 West Commodore Way		
City: Seattle	State: WA	Zip code: 98199-1233
Contact person (if different than owner listed above): Scott Sloan, RG Environmental Project Manager		
Street address:		
City:	State:	Zip code:
Phone: (206) 286-6457	Fax:	E-mail address: ssloan@timeoil.com
Date of ownership: 1941	to present	

Current operator:	Type:	
Street address:		
City:	State:	Zip code:
Contact person (if different than owner listed above):		
Street address:		
City:	State:	Zip code:
Phone:	Fax:	E-mail address:
Date of operation:	to	

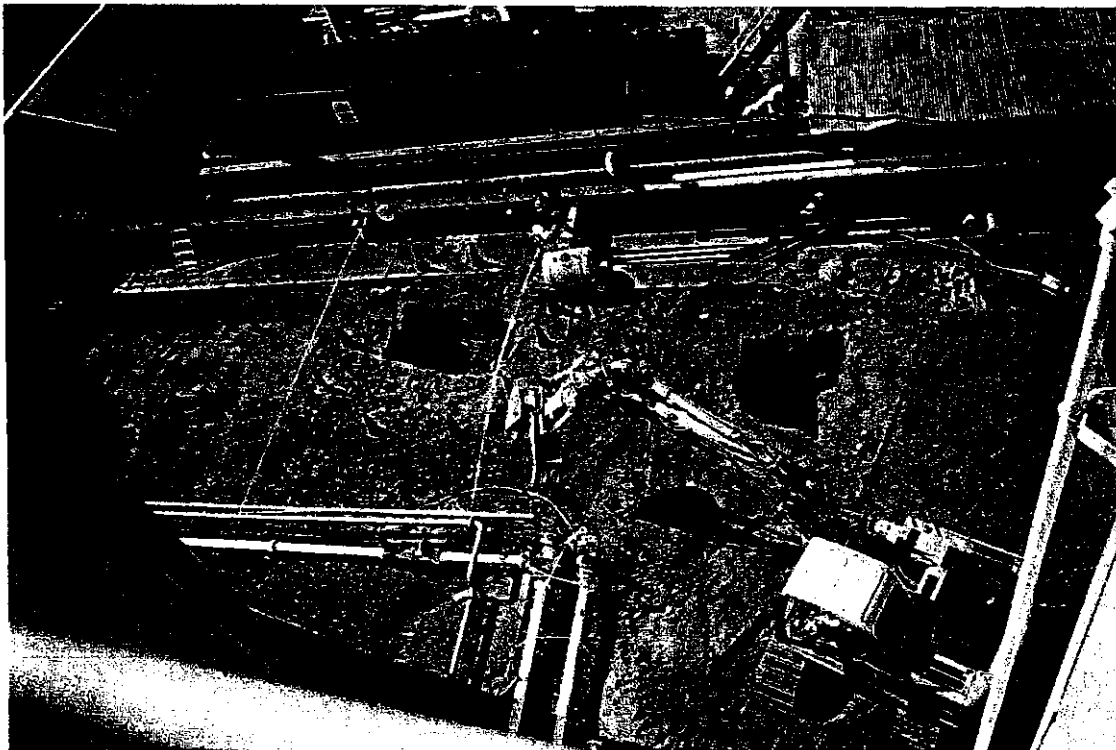
APPENDIX C
SITE PHOTOGRAPHS



Photograph A. Aerial view of final excavation area and loadout area prior to site restoration



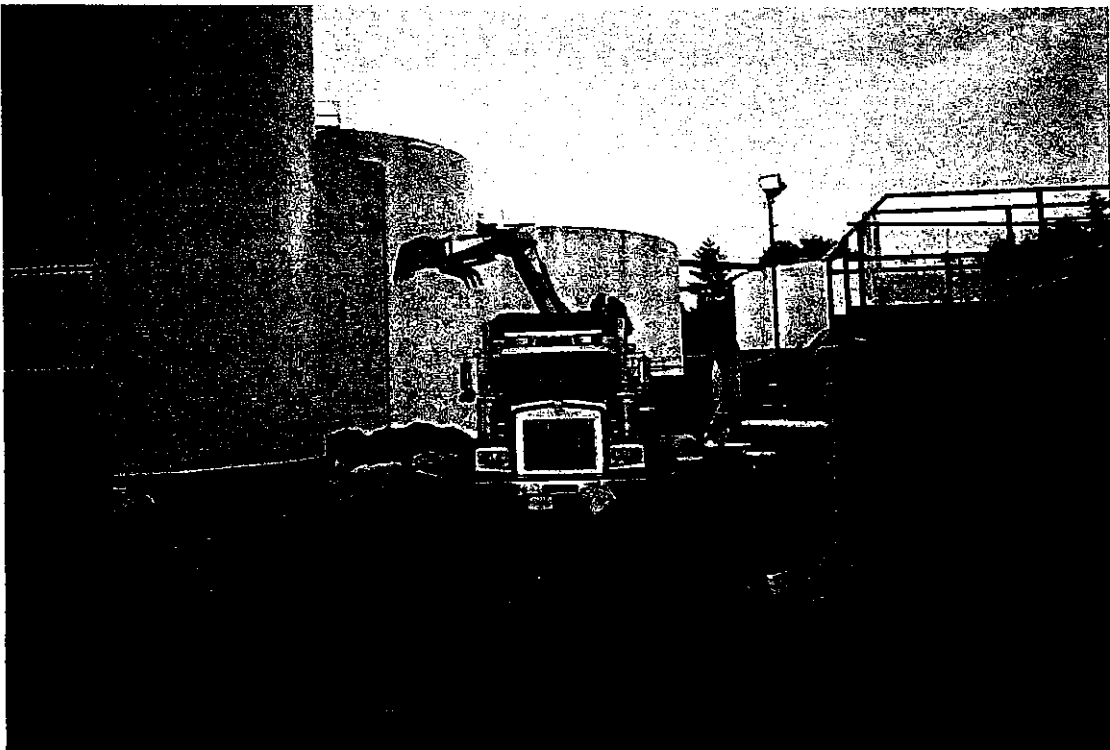
Photograph B. Looking south across excavation area



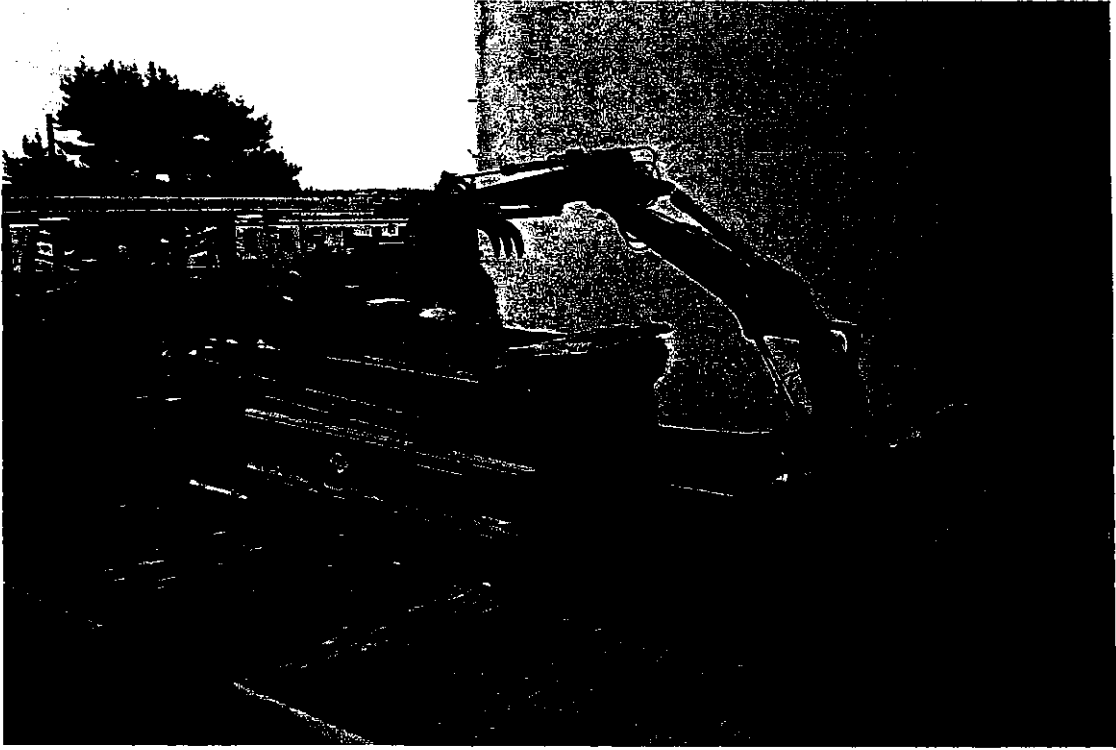
Photograph C. Aerial view of excavation area. Two subsurface locations are visible: former boring location SB-04 on left and former boring location SB-56 on right



Photograph D. Trackhoe removing surface soil



Photograph E. Looking south across soil loadout area as trucks are loaded with material



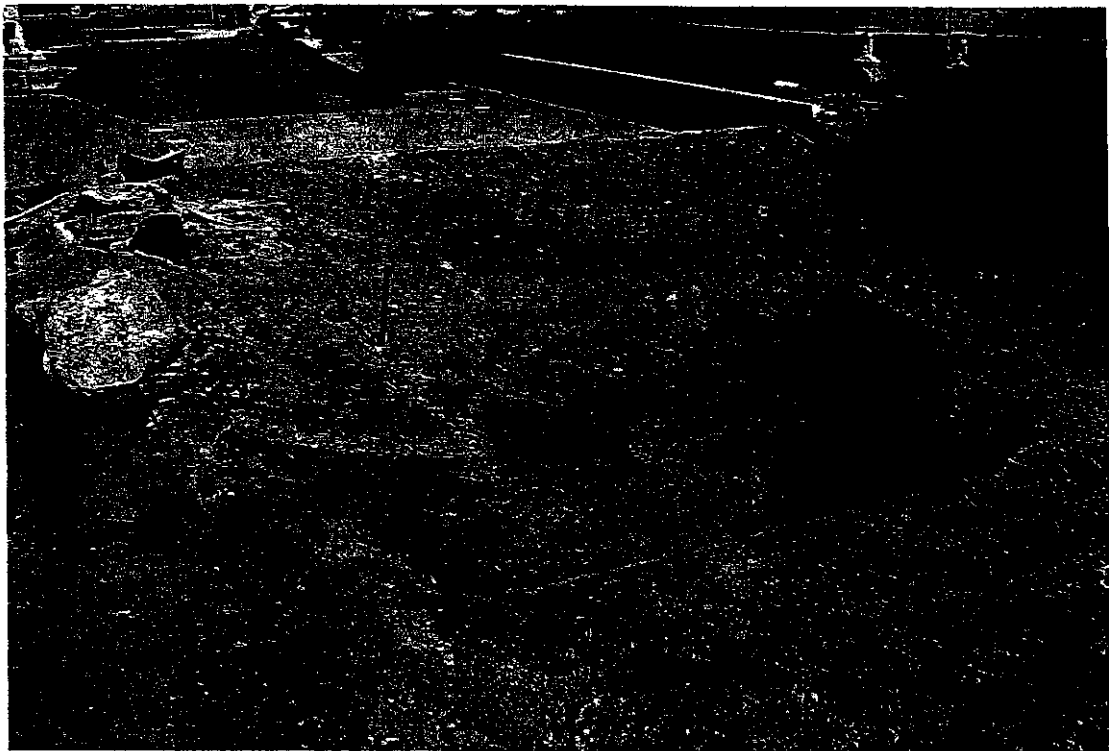
Photograph F. Soil is loaded into lined trucks for transport off site



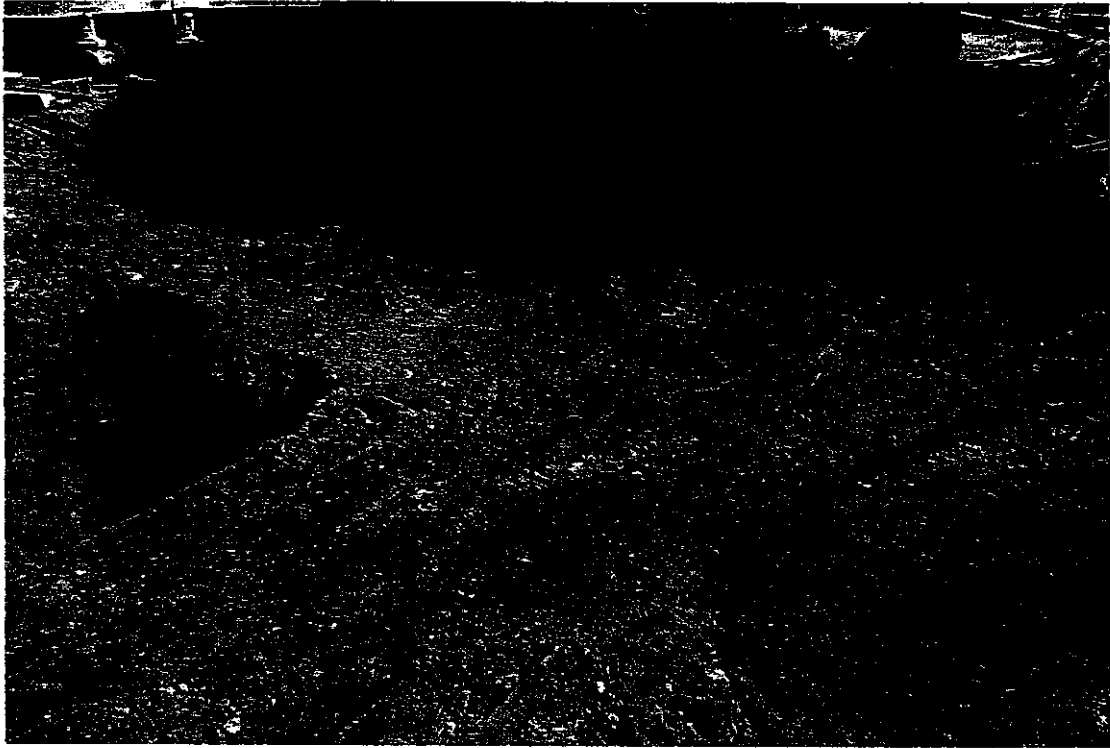
Photograph G. Looking north across initial removal area. Subsurface location PEC-ES-01 in background with sample location PEC-SS-03 on the right. Wooden stakes mark confirmation sample locations PEC-SS-01 on left and PEC-SS-02 on the right. Stockpile is visible on the right.



Photograph H. Looking north at former location of former soil boring location SB-56 (formerly well 01MW-14)



Photograph I. Close up of former location of 01MW-14 (SB-56) and confirmation sample locations; PEC-ES-02 in foreground and PEC-SS-05 in background



Photograph J. Confirmation sample locations PEC-SS-06; PEC-SS-07; and PEC-SS-04 (left to right)

APPENDIX E
SOIL RECYCLING DOCUMENTATION

**WEIGHT TICKET
WASTE ONLY**

SENSOR
Environmental Services Ltd.
18:10 Wed 09/18/02
ID. NUMBER: 14138
WEIGHT IN: 45100 kg

19:19 Wed 09/18/02
ID. NUMBER: 14138
Gross 45100 kg
Tare 20370 kg

NET 24730 kg

14138

CARRIER

SHIPPER

WAY BILL #

MANIFEST #

20851556

WEIGHED BY



DATE

Distribution: Scale House Administration Billing Trucker
(White) (Blue) (Pink) (Green)

MANIFEST - MANIFESTE

This Manifest conforms to all Federal and Provincial transport and environmental legislation requiring manifesting. Ce manifeste est conforme aux législations fédérales et provinciales sur l'environnement et le transport, requérant un manifeste.

Manifest Reference No.
N° de référence du manifeste

2085155-6

A Consignor (Generator) / Expéditeur (Producteur)
 Company name / Nom de l'entreprise: **TIME OIL COMPANY**
 Provincial ID No. / N° d'id. provincial: **WB0009981207**
 Mailing address / Adresse postale: **2737 W. COMMERCE WAY, SERRITTE, WA 98199-1233**
 City / Ville: **SEARITTE** Province: **WA** Postal code / Code postal: **98199-1233**
 Shipping site address / Origine de l'expédition: **2737 WEST COMMERCE WAY**

B Carrier / Transporteur
 Company name / Nom de l'entreprise: **Z.A.R. TRUCKING COMPANY LTD.**
 Address / Adresse: **23302 70A AVE.**
 City / Ville: **LANERY** Province: **B.C.** Postal code / Code postal: **V1C 2Y1**
 Vehicle / Véhicule: **1st remorque - wagon**
 Trailer/Trail Car No. 1: **P.5 3586**
 Trailer/Trail Car No. 2: **2110-04**
 Point of entry: **Point of exit**
 Canada Certification: I declare that I have received waste as offered by the consignor in Part A, for delivery to the intended consignee and that the information contained in Part B is complete and correct. / Déclaration du transporteur: J'ai déclaré avoir reçu les déchets offerts par l'expéditeur dans la partie A en vue de leur livraison au destinataire autorisé et que les renseignements inscrits à la partie B sont exacts et complets.
 Year / Année: **02** Month / Mois: **09** Day / Jour: **17** Name of authorized person (sign) / Nom de l'agent autorisé (parachassis d'impression): **BOULDEV. S. / MLEA**
 Signature: **Bill Kemp** Tel. No. / N° de tél.: **604-318-7989**

C Consignee (Receiver) / Destinataire (Réceptionnaire)
 Provincial ID No. / N° d'id. provincial: **R 1047**
 Consignee information same as intended Consignee in Part A. L'information à fournir par le destinataire est la même qu'en A.
 Yes / Oui No, complete the boxes below / Non, compléter la boîte ci-dessous
 Company name / Nom de l'entreprise: **Sensor Environmental**
 Address / Adresse: **Box 1400**
 City / Ville: **Surrey Hills** Province: **CB** Postal code / Code postal: **T0G 2C0**
 Receiving site address / Destination de l'expédition: **Plant site**
 City / Ville: **Plant site** Province: **Plant site** Postal code / Code postal: **Plant site**

Intended consignee / Destinataire prévu
HAVCO ENVIRONMENTAL SERVICES LTD.
 Address / Adresse: **200-5720 4TH STREET SE, CALGARY, AB T2C 1K7**
 City / Ville: **CALGARY** Province: **AB** Postal code / Code postal: **T2C 1K7**
 Receiving site address / Destination de l'expédition: **200-5720 4TH STREET SE**
 City / Ville: **CALGARY** Province: **AB** Postal code / Code postal: **T2C 1K7**

Physical site / Lieu physique	Shippers Appellation / Appellation de l'expéditeur	Provincial No. / N° provincial (Quebec-Charité req.)	Waste Identification / Identification du déchet	Quantity shipped / Quantité expédiée	Units / Unités	Classification	Packaging Group / Groupe d'emballage	Restricting Contents / Contenu restrictif	Handling Code / Code de manipulation	Disposal / Destination	Date received / Date de réception		Time / Heure
											Year / Année	Month / Mois	
S	ENVIRONMENTAL SERVICES, SOLID N.O. CONTAMINATED WITH PCB	32232	UN3977	23,600	kg	9 III			02		02	09	18:06:10
	ENVIRONMENTAL SERVICES, SOLID N.O. CONTAMINATED WITH PCB												
	ENVIRONMENTAL SERVICES, SOLID N.O. CONTAMINATED WITH PCB												

Special handling / Emergency instructions / Manutention spéciale / Instructions d'urgence
IN CASE OF EMERGENCY CALL 1-800-667-0444

Dated / Date 02/09/17 **Time / Heure** 12:00 PM
Scheduled arrival date / Date d'arrivée prévue 02/09/19
 Circulation no. - Québec only / N° de circulation - Réservé au Québec: **1206-286-6457**
 Province: **AB** City / Ville: **Calgary**

Consignor Certification / Déclaration de l'expéditeur: I declare that the information contained in Part A is correct and complete. / Je déclare que tous les renseignements à la partie A sont exacts et complets.
 Name of authorized person (sign) / Nom de l'agent autorisé (parachassis d'impression): **Scott B. Sloan**
 Signature: **Scott B. Sloan** Tel. no. / N° de tél.: **403-241-1977**

**WEIGH TICKET
WASTE ONLY**

SENSOR
Environmental Services Ltd.
19:05 Wed 09/18/02
ID. NUMBER: 14141
WEIGHT IN: 45700 kg

19:43 Wed 09/18/02
ID. NUMBER: 14141
Gross 45700 kg
Tare 19950 kg

NET 25750 kg

14141

CARRIER

SHIPPER	WAY BILL #	MANIFEST #
		20851549

WEIGHED BY: EQ DATE: _____

**WEIGH TICKET
WASTE ONLY**

SENSOR
Environmental Services Ltd.
18:08 Wed 09/18/02
ID. NUMBER: 14137
WEIGHT IN: 45310 kg

19:09 Wed 09/18/02
ID. NUMBER: 14137
Gross 45310 kg
Tare ~~20420 kg~~
20350
NET ~~24690 kg~~
24,960kg

14137

CARRIER

SHIPPER	WAY BILL #	MANIFEST #
		20851531

WEIGHED BY: EO DATE: _____

**WEIGH TICKET
WASTE ONLY**

SENSOR
Environmental Services Ltd.
18:13 Wed 09/18/02
ID. NUMBER: 14140
WEIGHT IN: 45900 kg

19:40 Wed 09/18/02
ID. NUMBER: 14140
Gross 45900 kg
Tare 20160 kg

NET 25740 kg

14140

CARRIER

SHIPPER	WAY BILL #	MANIFEST #
		20851523

WEIGHED BY: EQ DATE: _____

MANIFEST - MANIFESTE

This Manifest conforms to all Federal and Provincial transport and environmental legislation requiring such a manifest. Ce manifeste est conforme aux législations fédérales et provinciales sur l'environnement et le transport, requérant un manifeste.

Manifest Reference No. /
No de référence du manifeste

2085152-3

A Consignor (Generator) / Expéditeur (Producteur)
 Company name / Nom de l'entreprise: **TIME OIL COMPANY**
 Mailing address / Adresse postale: **2737 W. COMMODORE WAY, SEATTLE, WA 98199-1233**
 Shipping site address / Origine de l'expédition: **2737 WEST COMMODORE WAY**
 City / Ville: **SEATTLE** Province: **WA** Postal code / Code postal: **98199-1233**

B Carrier / Transporteur
 Company name / Nom de l'entreprise: **Z & R TRUCKING COMPANY LTD.**
 Address / Adresse: **23002 - 70A AVE.**
 City / Ville: **LANSEBY** Province: **ON** Postal code / Code postal: **M9M 5S73**

C Consignee (Receiver) / Destinataire (Réceptionnaire)
 Company name / Nom de l'entreprise: **Sensar Environmental**
 Address / Adresse: **Box 1400**
 City / Ville: **Sugar Hills** Province: **AB** Postal code / Code postal: **T0G 2S0**
 Receiving site address / Destination de l'expédition: **Plant site**
 City / Ville: Province: Postal code / Code postal:

Provincial ID No. / No d'id. provincial: **IM 0873**

Registration No. / No d'immatriculation: **P5 3683** Province: **BC**

Trailer/Rail Car No. 1: **79689W** Province: **BC**

Trailer/Rail Car No. 2: **BC**

Point of entry: **Point of exit**

Carrier Certification: I declare that the information contained in Part A for delivery to the receiver is correct and complete. / Je déclare que l'information contenue dans la partie A pour livraison au destinataire est correcte et complète.

Yes / Oui: **09** Month / Mois: **09** Day / Jour: **17** Name of authorized person (print) / Nom de l'agent autorisé (en lettres d'imprimées): **J. JANTAR SEKHON**

Signature: *J. Jantar Sekhon* Tel. no. / No de tél.: **604 387 7927**

Physical State / Etat physique	Shipping name of waste / Appellation réglementaire du déchet	Waste Identification / Identification du déchet		Quantity shipped / Quantité expédiée	Units / L or kg or lbs / L ou kg ou lbs	Packaging description / Description de l'emballage	Provincial No. / No (Quebec-Ontario only) / L'INDICER (Québec-Ontario seul)	Contents No. / No. des cont.
		Provincial No. / No (Quebec-Ontario only) / L'INDICER (Québec-Ontario seul)	Contents No. / No. des cont.					
S	ENVIRONMENTALLY HAZAROUS SUBSTANCES / SOLID N.O.S. (SOIL CONTAMINATED WITH PENTACHLORENOL)	32232	IN307	23,600	kg	9 III	03	03
	ENVIRONMENT CANADA I/E NOTICE 02/00506/TMP							

D Handling / Emergency Instructions / Manutention spéciale / Instructions d'urgence
 IN CASE OF EMERGENCY CALL 1-800-667-0444

E Date shipped / Date d'expédition
 Year / Année: **02** Month / Mois: **09** Day / Jour: **17** Time / Heure: **12:00** P.M.

F Scheduled arrival date / Date d'arrivée prévue
 Year / Année: **02** Month / Mois: **09** Day / Jour: **19**

G Consignor Certification / Déclaration de l'expéditeur
 I declare that the information contained in Part A is correct and complete. / Je déclare que tous les renseignements à la partie A sont vérifiés et complets.

Name of authorized person (print) / Nom de l'agent autorisé (en lettres d'imprimées): **Scott B. Sloan** (on behalf of Time Oil Co.)
 Signature: *Scott B. Sloan* Tel. no. / No de tél.: **206 786-6457**

H Handling code "Other" (specify) / Si code de manutention "divers", spécifier
 02

I Provincial ID No. / No d'id. provincial
 0209180613

J Identification / Description
 Description: **02**

K Quantity received / Quantité reçue
23600 kg

L Units / L or kg or lbs / L ou kg ou lbs
kg

M Circulation No. - Québec only / No de circulation - Réservés au Québec
03

N Name of authorized person (print) / Nom de l'agent autorisé (en lettres d'imprimées)
Erle Unvack

O Signature
Erle Unvack

P City / Ville
Unvack

Q Province
ON

R Postal code / Code postal
R1B 3B3



**SUMMARY OF SOIL DESTRUCTION
TIME OIL LIMITED - SEATTLE, WA**

Load Date	Source Location	Load Type	US Manifest #	Cdn. Manifest Primary	Cdn. Manifest Sub #	Cert. Dest #	Weight Destroyed (Kg's)	Base Rate	Moisture Surcharge	High Con. Surcharge	Billing Rate	Gross Billing
17-Sep-02	Seattle	Soil	SEA02	2085152	3	3339	28,374	\$ 308.00	\$ -	\$ -	\$ 308.00	\$ 8,739.04
17-Sep-02	Seattle	Soil	SEA01	2085153	1	3339	27,514	\$ 308.00	\$ -	\$ -	\$ 308.00	\$ 8,474.16
17-Sep-02	Seattle	Soil	SEA03	2085134	9	3339	28,407	\$ 308.00	\$ -	\$ -	\$ 308.00	\$ 8,749.20
17-Sep-02	Seattle	Soil	SEA04	2085155	6	3339	27,260	\$ 308.00	\$ -	\$ -	\$ 308.00	\$ 8,396.08
TOTAL							111,554	101,200				\$ 34,358.48

Sensor Environmental Services Ltd.

CERTIFICATE OF DESTRUCTION

HAZCO ENVIRONMENTAL SERVICES LTD-TIME 01
160-13511 VULCAN WAY

FOR PERIOD ENDING: 2002/09/19

RICHMOND
CANADA V6V 1K4
ATTN: GREG MCCREA

BC

POINT OF ORIGIN:
CALGARY AB
CANADA

Shipment Manifest Number	Manifest Number	International Manifest	WPS Number	Date Received	Qty Destroyed	Last Destruction	Waste Description
210193	20856811		32231	2002/SEP/18	1	BL 2002/SEP/18	SOIL CONTAMINATED WITH PENTACHLOROPHENOLS, LOW PCP
210235	20851119		32231	2002/SEP/18	1	BL 2002/SEP/19	SOIL CONTAMINATED WITH PENTACHLOROPHENOLS, LOW PCP
210236	20851531		32232	2002/SEP/18	1	BL 2002/SEP/19	SOIL CONTAMINATED WITH PENTACHLOROPHENOLS, HIGH PCP
210237	20851556		32232	2002/SEP/18	1	BL 2002/SEP/19	SOIL CONTAMINATED WITH PENTACHLOROPHENOLS, HIGH PCP
210238	20851135		32231	2002/SEP/18	1	BL 2002/SEP/19	SOIL CONTAMINATED WITH PENTACHLOROPHENOLS, LOW PCP
210239	20851523		32232	2002/SEP/18	1	BL 2002/SEP/19	SOIL CONTAMINATED WITH PENTACHLOROPHENOLS, HIGH PCP
210240	20851549		32232	2002/SEP/18	1	BL 2002/SEP/19	SOIL CONTAMINATED WITH PENTACHLOROPHENOLS, HIGH PCP
210242	20857330		32231	2002/SEP/18	1	BL 2002/SEP/19	SOIL CONTAMINATED WITH PENTACHLOROPHENOLS, LOW PCP

Verified By: [Signature]

Authorized By: A. Wakeh

Date: Sept 19, 2002

Date: 18 Sept 2002

Swan Hills Treatment Centre

Mail Bag 1400, Swan Hills, Alberta T0G 2C0 Telephone: 780.333.4197 Fax: 780.333.4196

3339

UNIFORM HAZARDOUS WASTE MANIFEST

1. Generator's US EPA ID No. WAD009591207.

Manifest Document No. S.E.A.O.4

2. Page 1 of 1

Information in the shaded areas is not required by Federal law.

3. Generator's Name and Mailing Address: TIME OIL COMPANY, 2737 W.COMMODORE WAY, SEATTLE, WA 98199-1233

4. Generator's Phone (206) 286-6443

5. Transporter 1 Company Name: Z & R TRUCKING COMPANY LTD. 6. US EPA ID Number: WAR00012393

7. Transporter 2 Company Name 8. US EPA ID Number 9. Designated Facility Name and Site Address: HAZCO ENVIRONMENTAL SERVICES LTD., 200-5720 4TH ST., SE, CALGARY, AB T2H 1K7 10. US EPA ID Number: WAR000Q11981

A. State Manifest Document Number

B. State Generator's ID

C. State Transporter's ID

D. Transporter's Phone: 604-318-7929

E. State Transporter's ID

F. Transporter's Phone

G. State Facility's ID: ABR01101 604-214-7000

H. Facility's Phone

11. US DOT Description (Including Proper Shipping Name, Hazard Class, and ID Number)

12. Containers No. Type 13. Total Quantity 14. Unit Wt/Vol 15. Waste No.

a. X WASTE ENVIRONMENTALLY HAZARDOUS SUBSTANCES, SOLID, N.O.S. (F027), 9, UN3077, III (SOIL CONTAMINATED WITH PENTACHLOROPHENOL)

1 1 DT 23,600 K

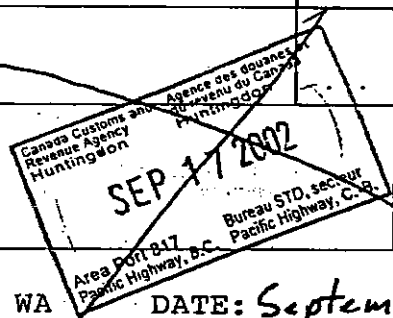
b. RCRA REGULATED SOLID (F027)

c.

d.

J. Additional Descriptions for Materials Listed Above

K. Handling Codes for Wastes Listed Above



15. Special Handling Instructions and Additional Information: POINT OF DEPARTURE: SUMAS. WA DATE: September 17, 2002 IN CASE OF EMERGENCY: 1-800-687-0444

16. GENERATOR'S CERTIFICATION: I hereby declare that the contents of this consignment are fully and accurately described above by proper shipping name and are classified, packed, marked, and labeled, and are in all respects in proper condition for transport by highway according to applicable international and national governmental regulations. and conforms to the attached EPA acknowledgement of consent

Printed/Typed Name: KEVIN MURPHY Signature: (For, and on behalf of, Time Oil Co.) Month Day Year: 09/17/02

17. Transporter 1 Acknowledgement of Receipt of Materials: Printed/Typed Name: BALDEV S KALER Signature: Month Day Year: 10/9/11/7/02

18. Transporter 2 Acknowledgement of Receipt of Materials: Printed/Typed Name: Signature: Month Day Year:

19. Discrepancy Indication Space

20. Facility Owner or Operator: Certification of receipt of hazardous materials covered by this manifest except as noted in Item 19. HAZCO Environmental Services Ltd.

Printed/Typed Name: Leslie Burke Signature: Leslie Burke Month Day Year: 10/9/18/02

GENERATOR

TRANSPORTER

FACILITY

Cdn 20895154-9

Emergency Contact Telephone Number

UNIFORM HAZARDOUS WASTE MANIFEST		1. Generator's US EPA ID No. WAD009591207	Manifest Document No. S-E-A-O-3	2. Page 1 of 1	Information in the shaded areas is not required by Federal law.	
GENERATOR	3. Generator's Name and Mailing Address TIME OIL COMPANY 2737 W.COMMODORE WAY, SEATTLE, WA 98199-1233			A. State Manifest Document Number		
	4. Generator's Phone (206) 286-6443			B. State Generator's ID		
	5. Transporter 1 Company Name Z & R TRUCKING COMPANY LTD.		6. US EPA ID Number WAR000012393	C. State Transporter's ID		
	7. Transporter 2 Company Name		8. US EPA ID Number	D. Transporter's Phone 604-318-7929		
	9. Designated Facility Name and Site Address HAZCO ENVIRONMENTAL SERVICES LTD. 200-5720 4TH ST., SE, CALGARY, AB T2H 1K7		10. US EPA ID Number WAR00001.1981	E. State Transporter's ID		
				F. Transporter's Phone		
				G. State Facility's ID ABR01101 604-214-7000		
				H. Facility's Phone		
TRANSPORTER	11. US DOT Description (Including Proper Shipping Name, Hazard Class, and ID Number)		12. Containers	13. Total Quantity	14. Unit Wt/Vol	L Waste No.
			No.	Type		
	a.	X WASTE ENVIRONMENTALLY HAZARDOUS SUBSTANCES, SOLID, N.O.S. (F027), 9, UN3077, III (SOIL CONTAMINATED WITH PENTACHLOROPHENOL)	1	DT	23,600	K
	b.	RCRA REGULATED SOLID (F027)				
	c.					
J. Additional Descriptions for Materials Listed Above			K. Handling Codes for Wastes Listed Above			
15. Special Handling Instructions and Additional Information POINT OF DEPARTURE: SUMAS. WA DATE: September 17, 2002 IN CASE OF EMERGENCY: 1-800-667-0444						
16. GENERATOR'S CERTIFICATION: I hereby declare that the contents of this consignment are fully and accurately described above by proper shipping name and are classified, packed, marked, and labeled, and are in all respects in proper condition for transport by highway according to applicable international and national governmental regulations. and conforms to the attached EPA acknowledgement of consent						
Printed/Typed Name KEVIN MURPHY Scott B. Sloan		Signature <i>Scott B. Sloan</i> (for and on behalf of Time Oil Co.)		Month	Day	Year
17. Transporter 1 Acknowledgement of Receipt of Materials		Printed/Typed Name HARJIT S. HANS		Signature <i>Harjit S. Hans</i>		Month Day Year 09/17/02
18. Transporter 2 Acknowledgement of Receipt of Materials		Printed/Typed Name		Signature		Month Day Year
19. Discrepancy Indication Space						
20. Facility Owner or Operator. Certification of receipt of hazardous materials covered by this manifest except as noted in Item 19. HAZCO Environmental Services Ltd.						
Printed/Typed Name Leslie Burke		Signature <i>Leslie Burke</i>		Month	Day	Year
				09	18	02

ORIGINAL — RETURN TO GENERATOR

Emergency Contact Telephone Number

UNIFORM HAZARDOUS WASTE MANIFEST		1. Generator's US EPA ID No. WAD009591207	Manifest Document No. SEA-02	2. Page 1 of 1	Information in the shaded areas is not required by Federal law.	
GENERATOR	3. Generator's Name and Mailing Address TIME OIL COMPANY 2737 W. COMMODORE WAY, SEATTLE, WA 98199-1233			A. State Manifest Document Number		
	4. Generator's Phone (206) 286-6443			B. State Generator's ID		
	5. Transporter 1 Company Name Z & R TRUCKING COMPANY LTD.		6. US EPA ID Number WAR000012393	C. State Transporter's ID		
	7. Transporter 2 Company Name		8. US EPA ID Number	D. Transporter's Phone 604-318-7929		
	9. Designated Facility Name and Site Address HAZCO ENVIRONMENTAL SERVICES LTD. 200-5720 4TH ST., SE, CALGARY, AB T2H 1K7		10. US EPA ID Number WAR000011981	E. State Transporter's ID		
			F. Transporter's Phone			
			G. State Facility's ID ABRO1101			
			H. Facility's Phone 604-214-7000			
11. US DOT Description (Including Proper Shipping Name, Hazard Class, and ID Number)		12. Containers		13. Total Quantity	14. Unit Wt/Vol	I. Waste No.
HM	a. X WASTE ENVIRONMENTALLY HAZARDOUS SUBSTANCES, SOLID, N.O.S. (F027), 9, UN3077, III (SOIL CONTAMINATED WITH PENTACHLOROPHENOL)	No. 1	Type DT	23,600	K	
	b. RCRA REGULATED SOLID (F027)					
	c.					
	d.					
J. Additional Descriptions for Materials Listed Above			K. Handling Codes for Wastes Listed Above			
15. Special Handling Instructions and Additional Information POINT OF DEPARTURE: SUMAS. WA DATE: September 17, 2002 IN CASE OF EMERGENCY: 1-800-667-0444						
16. GENERATOR'S CERTIFICATION: I hereby declare that the contents of this consignment are fully and accurately described above by proper shipping name and are classified, packed, marked, and labeled, and are in all respects in proper condition for transport by highway according to applicable international and national governmental regulations. If I am a large quantity generator, I certify that I have a program in place to reduce the volume and toxicity of waste generated to the degree I have determined to be economically practicable and that I have selected the practicable method of treatment, storage, or disposal currently available to me which minimized the present and future threat to human health and the environment; OR, if I am a small quantity generator, I have made a good faith effort to minimize my waste generation and select the best waste management method that is available to me and that I can afford. and conforms to the attached EPA acknowledgement of consent						
Printed/Typed Name EVIN MURPHY Scott B. Sloan		Signature <i>Scott Sloan</i> (For, and on behalf of, Time Oil Co.)		Month Day Year 09/17/02		
17. Transporter 1 Acknowledgement of Receipt of Materials						
Printed/Typed Name JAGTAR. SEKHON.		Signature <i>Jagtar Sekhon</i>		Month Day Year 09/17/02		
18. Transporter 2 Acknowledgement of Receipt of Materials						
Printed/Typed Name		Signature		Month Day Year		
19. Discrepancy Indication Space						
20. Facility Owner or Operator: Certification of receipt of hazardous materials covered by this manifest except as noted in Item 19. HAZCO Environmental Services Ltd.						
Printed/Typed Name Leslie Burke		Signature <i>Leslie Burke</i>		Month Day Year 09/18/02		

TRANSPORTER

FACILITY

Emergency Contact Telephone Number

UNIFORM HAZARDOUS WASTE MANIFEST

1. Generator's US EPA ID No. **WAD009591207.** Manifest Document No. **S.E.A.O.I.**
 2. Page 1 of 1 Information in the shaded areas is not required by Federal law.

3. Generator's Name and Mailing Address
TIME OIL COMPANY
2737 W.COMMODORE WAY, SEATTLE, WA 98199-1233
 4. Generator's Phone (206 286-6443)
 5. Transporter 1 Company Name **Z & R TRUCKING COMPANY LTD.** 6. US EPA ID Number **WAR000012393**
 7. Transporter 2 Company Name 8. US EPA ID Number
 9. Designated Facility Name and Site Address **HAZCO ENVIRONMENTAL SERVICES LTD.** 10. US EPA ID Number **WAR000011981.**
200-5720 4TH ST., SE, CALGARY, AB T2H 1K7

A. State Manifest Document Number
 B. State Generator's ID
 C. State Transporter's ID
 D. Transporter's Phone **604-318-7929**
 E. State Transporter's ID
 F. Transporter's Phone
 G. State Facility's ID **ABR01101**
604-214-7000
 H. Facility's Phone

GENERATOR

a.	HM	11. US DOT Description (Including Proper Shipping Name, Hazard Class, and ID Number)	12. Containers		13. Total Quantity	14. Unit W/Vol	15. Waste No.
			No.	Type			
	X	WASTE ENVIRONMENTALLY HAZARDOUS SUBSTANCES, SOLID, N.O.S. (F027), 9, UN3077, III (SOIL CONTAMINATED WITH PENTACHLOROPHENOL)	1	DT	23,600	K	
b.		RCRA REGULATED SOLID (F027)					
c.							
d.							

J. Additional Descriptions for Materials Listed Above
 K. Handling Codes for Wastes Listed Above

15. Special Handling Instructions and Additional Information
POINT OF DEPARTURE: SUMAS. WA DATE: September 17, 2002
IN CASE OF EMERGENCY: 1-800-667-0444

16. GENERATOR'S CERTIFICATION: I hereby declare that the contents of this consignment are fully and accurately described above by proper shipping name and are classified, packed, marked, and labeled, and are in all respects in proper condition for transport by highway according to applicable international and national governmental regulations. **and conforms to the attached EPA acknowledgement of consent**
 If I am a large quantity generator, I certify that I have a program in place to reduce the volume and toxicity of waste generated to the degree I have determined to be economically practicable and that I have selected the practicable method of treatment, storage, or disposal currently available to me which minimized the present and future threat to human health and the environment; OR, if I am a small quantity generator, I have made a good faith effort to minimize my waste generation and select the best waste management method that is available to me and that I can afford.

Printed/Typed Name ~~KEVIN MURPHY~~ **Scott B. Sloan** Signature *Scott B. Sloan* (For, and on behalf of Time Oil Co.) Month Day Year **10 9 17 02**

TRANSPORTER

17. Transporter 1 Acknowledgement of Receipt of Materials
 Printed/Typed Name **JASSIR DHALIWAL** Signature *Jassir Dhaliwal* Month Day Year **10 9 17 02**

18. Transporter 2 Acknowledgement of Receipt of Materials
 Printed/Typed Name Signature Month Day Year

FACILITY

19. Discrepancy Indication Space

20. Facility Owner or Operator: Certification of receipt of hazardous materials covered by this manifest except as noted in Item 19.
HAZCO Environmental Services Ltd.
 Printed/Typed Name **Leslie Burke** Signature *Leslie Burke* Month Day Year **10 9 18 02**



Canadian Food Inspection Agency
Government of Canada

Agence canadienne d'inspection des aliments
Gouvernement du Canada

Permit No./N° de permis:
P-2002-04922
AMENDED
2002/08/28
year/mo/day
année/mois/jour

IMPORT PERMIT

PERMIS D'IMPORTATION

Page 2 of/da 2

THIS PERMIT IS ISSUED PURSUANT TO/CE PERMIS EST DÉLIVRÉ CONFORMÉMENT À:

THE PLANT PROTECTION ACT AND REGULATIONS/LOI ET RÉGLEMENT SUR LA PROTECTION DES VÉGÉTAUX

Importer/Importateur
HAZCO ENVIRONMENTAL SERVICES LTD
13511 VULCAN WAY
RICHMOND, BRITISH COLUMBIA
V6V1K4

Applicant Name: CAMPBELL, GREGORY
Phone: 604-214-7000 Fax: 604-214-7017

Exporter/Exportateur
TIMB OIL COMPANY

3737 W COMMODORE WAY
SEATTLE WASHINGTON
UNITED STATES
98199

Selected Conditions / Conditions Choisies (Continued/Suite)

Any residual material must be processed to prevent contamination.

- At all times (i.e., during importation, research and storage, and until disposal), the material shall be identified with labels or other efficient identification means.
- The importer and their facilities shall keep a log book of all importations. This log book shall show where the material is in the facility and its status (e.g., forwarded, treated, stored, ...).

Barb Peterson

Authorized By:/Approuvé par:
Robert Carbery

Executive Director / Directeur Exécutif
Plant Products Directorate/
Direction des produits végétaux

The information is required by (for) the Canadian Food Inspection Agency for the purposes of verifying import products. Information may be accessible or protected as required under the provisions of the Access to Information Act.

Canada



Canadian Food Inspection Agency
Government of Canada

Agence canadienne d'inspection des aliments
Gouvernement du Canada

Permit No./N° de permis:
P-2002-04922
AMENDED
2002/08/28
year/month/day
année/mois/jour

IMPORT PERMIT

PERMIS D'IMPORTATION

Page 1 of 2

THIS PERMIT IS ISSUED PURSUANT TO/CE PERMIS EST DÉLIVRÉ CONFORMÉMENT À:

THE PLANT PROTECTION ACT AND REGULATIONS/LOI ET RÈGLEMENT SUR LA PROTECTION DES VÉGÉTAUX

<p><u>Importer/Importateur</u> HAZCO ENVIRONMENTAL SERVICES LTD 13511 VULCAN WAY RICHMOND, BRITISH COLUMBIA V6V1K4 Applicant Name: CAMPBELL GREGORY Phone: 604-214-7000 Fax: 604-214-7017</p>	<p><u>Importer/Exportateur</u> TMS OIL COMPANY 2737 W COMMODORE WAY SEATTLE WASHINGTON UNITED STATES 98199</p>
<p><u>Quarantine/Destination/Quarantaine</u> SWAN HILLS TREATMENT CENTRE NE 1/4 SEC 6-67-8 W5M SWAN HILLS, ALBERTA</p>	<p><u>Producer/Producteur</u></p>
<p>Valid/Valide from/du 2002/08/20 to/au 2003/08/20 year/month/day year/month/day année/mois/jour année/mois/jour</p>	<p>Country of Propagation or Production/Le pays de multiplication ou de production UNITED STATES (WASHINGTON)</p>
<p>For the entry of/ Pour l'entrée de: <input type="checkbox"/> Single shipment/Chargement simple <input checked="" type="checkbox"/> Multiple shipments/Chargements multiples</p>	
<p>Place of entry into Canada/Lieu d'entrée au Canada: ALL REGULATED PORTS</p>	
<p>FOR THE IMPORTATION OF-/POUR L'IMPORTATION DE: (Description of things(s)/Description de la ou des choses) CONTAMINATED SOIL</p>	
<p>A PERSON WHO IMPORTS A THING UNDER THIS PERMIT SHALL COMPLY WITH ALL THE CONDITIONS SET OUT HEREIN/TOUTE PERSONNE QUI IMPORTE UNE CHOSE EN VERTU DE CE PERMIS DEVRA RESPECTER TOUTES LES CONDITIONS DÉCRITES CI-DESSOUS</p>	

Selected Conditions / Conditions Choies

CONTAMINATED SOIL

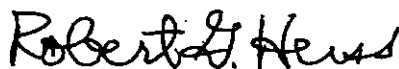
1. Importation is authorized under Section 43 of the Plant Protection Regulations. Phytosanitary Certification at origin is waived.
2. The material must be routed directly to the approved premises or facility. The material must be packaged and transported in sturdy leak proof containers. Not for sale or distribution. For industrial use only. The material must be contained at all times to prevent any post escape or exposure to the environment.

Building, Room 5124, 1200 Pennsylvania Avenue, NW, Washington, DC 20004.

All shipments of hazardous waste must conform to all applicable State and Federal hazardous waste regulations and transportation requirements as well as these specific export requirements.

Any questions you may have concerning this Acknowledgment of Consent or other export requirements may be directed to Mr. Scott Nelson (Phone 202/564-5032), or Mr. Bob Small (Phone 202/564-5043), EPA, Office of Enforcement and Compliance Assurance.

Sincerely,



Robert G. Heiss
Director
Import-Export Program
Enforcement, Planning, Targeting and
Data Division
Office of Compliance (2222A)

You are also reminded of the following special RCRA requirements for export shipments of hazardous waste. Specific details of these requirements are contained in Title 40 of the Code of Federal Regulations, Part 262, Subpart E.

1. If the major terms of the original notice of intent to export on which this consent is based should change, you must renotify EPA. Please mail your renotification to: USEPA, Ariel Rios Building, Mail Code 2222A, 1200 Pennsylvania Avenue, NW, Washington, D.C. 20460, with "ATTENTION: IMPORT-EXPORT PROGRAM" prominently displayed on the front of the envelope. (262.53(c)) Alternately, notices may be sent by courier to the same office at the Ariel Rios Building, Room 5124, 1200 Pennsylvania Avenue, NW, Washington, DC 20004.

2. The Uniform Hazardous Waste Manifest Form for each shipment must identify the point of departure from the United States in Item 15, Special Handling Instructions. (262.54(c))

3. The following statement must be added to the end of the first sentence of the certification set forth in Item 16 of the Uniform Hazardous Waste Manifest Form: "and conforms to the terms of the attached EPA Acknowledgment of Consent". (262.54(d))

4. A copy of this Acknowledgment of Consent must be attached to the U.S. hazardous waste manifest that accompanies each shipment of hazardous waste. (262.54(h))

5. You must provide the waste transporter with an additional copy of the U.S. hazardous waste manifest accompanying the shipment for delivery to a U.S. Customs official at the point the hazardous waste leaves the United States in accordance with 263.20(g)(4) and (262.54(i)).

6. You must file an exception report with the USEPA, Ariel Rios Building, Mail Code 2222A, 1200 Pennsylvania Avenue, NW, Washington, DC 20460, ATTN: IMPORT-EXPORT PROGRAM, if you have not received a copy of the manifest signed by the transporter stating the date and place of departure from the U.S. within forty five (45) days from the date it was accepted by the initial transporter; if within ninety (90) days from the date the waste was accepted by the initial transporter, the primary exporter has not received written confirmation from the consignee that the hazardous waste was received; or if the waste is returned to the United States. (262.55). Alternately, exception reports may be sent by courier to the same office at the Ariel Rios Building, Room 5124, 1200 Pennsylvania Avenue, NW, Washington, DC 20004.

7. You must file an annual report by March 1 of each year with the USEPA, Ariel Rios Building, Mail Code 2222A, 1200 Pennsylvania Avenue, NW, Washington, DC 20460, ATTN: IMPORT-EXPORT PROGRAM, summarizing all hazardous waste shipments exported during the previous calendar year. The report must include all items listed in 262.56. Alternately, annual reports may be sent by courier to the same office at the Ariel Rios



UNITED STATES ENVIRONMENTAL PROTECTION AGENCY
WASHINGTON, D.C. 20460

August 29, 2002

OFFICE OF
ENFORCEMENT AND
COMPLIANCE ASSURANCE

EPA Notice No.: 506/02

MR. SCOTT SLOAN
TIME OIL COMPANY
2737 WEST COMMODORE WAY
SEATTLE, WA 98199
EPA I.D. No.: WAD009591207

Dear MR. SLOAN:

This is to acknowledge receipt of your notice, dated July 9, 2002, of intent to export hazardous waste to Canada as required by Title 40, Code of Federal Regulations, Part 262, Subpart E, Section 262.53 promulgated pursuant to the Resource Conservation and Recovery Act (RCRA). In accordance with the U.S.-Canada Bilateral Agreement on the Transboundary Movement of Hazardous Waste, the U.S. Environmental Protection Agency (EPA) forwarded your notice to the Government of Canada and Canada has no objection to your shipment(s) of hazardous waste.

This letter constitutes the EPA Acknowledgment of Consent for the export of the following hazardous waste as specified in your notice:

Waste Description: CONTAMINATED SOIL. EPA Waste Code: F027. DOT Shipping Name: HAZARDOUS WASTE, SOLID, NOS; DOT Hazard Class: 9; DOT I.D. No.: NA3077. Total Volume to be Exported: 300 TONS. Estimated Frequency: 20 loads per YEAR.

You may ship this waste to the following consignee:

SENSOR ENVIRONMENTAL SERVICES, LTD.
BOX 1400
SWAN HILLS, ALBERTA
CANADA T0G 2C0

Shipments may occur during the period from August 21, 2002 to July 18, 2003.

MANIFEST - MANIFESTE

This Manifest conforms to all Federal and Provincial transport and environmental legislation requiring manifesting. Ce manifeste est conforme aux législations fédérales et provinciales sur l'environnement et le transport, requérant un manifeste.

A Consignor (Generator) Expéditeur (Producteur)
 Company name / Nom de l'entreprise: THE OIL COMPANY
 Mailing address / Adresse postale: 277 St. CHARLES ST., MONTREAL, P.Q. H3B 1A3
 Shipping site address / Origine de l'expédition: 277 WEST CONTOUR WAY, SUITE 100, MONTREAL, P.Q. H3B 1A3
 City / Ville: MONTREAL, P.Q.
 Provincial ID No. / No d'id. provincial: 25419-1233

Intended consignee / Destinataire prévu: WIND ENVIRONMENTAL SERVICES LTD.
 Address / Adresse: AIR 01101
 City / Ville: MONTREAL, P.Q.
 Provincial ID No. / No d'id. provincial: 25419-1233

Address / Adresse: 200-5720 AVE. SHERBROOKE, MONTREAL, P.Q. H2L 1S7
 Receiving site address / Destination de l'expédition: 200-5720 AVE. SHERBROOKE, MONTREAL, P.Q. H2L 1S7
 City / Ville: MONTREAL, P.Q.
 Provincial ID No. / No d'id. provincial: 25419-1233

B Carrier Transporteur
 Company name / Nom de l'entreprise: THE OIL COMPANY
 Address / Adresse: 277 ST. CHARLES ST., MONTREAL, P.Q. H3B 1A3
 City / Ville: MONTREAL, P.Q.
 Provincial ID No. / No d'id. provincial: 25419-1233

Vehicle / Véhicule: TRAILER / RAIL CAR No. 1
 Trailer/Rail Car No. 2
 Point of entry / Point d'entrée: MONTREAL, P.Q.
 Point of exit / Point de sortie: MONTREAL, P.Q.

Carrier Certification: I declare that I have received waste as offered by the consignor in Part A for delivery to the intended consignee and that the information contained in Part B is complete and correct. / Déclaration du transporteur: J'affirme avoir reçu les déchets offerts par l'expéditeur dans la partie A en vue de leur livraison au destinataire indiqué et que les renseignements inscrits à la partie B sont exacts et complets.

Year / Année: 1992, Month / Mois: 07, Day / Jour: 17
 Name of authorized person (print) / Nom de l'agent autorisé (caractères d'impression): Scott B. Sloan
 Signature: Scott B. Sloan
 Tel. No. / N° de tél.: (514) 392-1111

C Consignee (Receiver) Destinataire (Réceptionnaire)
 Company name / Nom de l'entreprise: SASSER Fertilizers International
 Address / Adresse: Box 1400, SUTTON HILLS, Q.B. J6G 2C0
 City / Ville: PLANT SITE, MONTREAL, P.Q.
 Provincial ID No. / No d'id. provincial: 25419-1233

Consignee Information: I declare that the information contained in Part C is correct and complete. / L'information fournie par le destinataire est la même qu'en A.

Yes / Oui: No / Non: Non, compléter la boîte ci-dessous

Physical state / Etat physique: SOLID / LIQUID / GASEOUS / OTHER (Specify)
 Shipping name of waste / Appellation réglementaire du déchet: SUBSTRATE SOLID, H.O.S. (SIL) CONTAMINATED WITH HYDROCARBONS
 Provincial No. / N° (Quebec-Ontario only) / (Québec-Ontario seul): 32232
 Waste identification / Identification du déchet: TOXIC / LHM/NIP
 Quantity shipped / Quantité expédiée: 73,000 kg
 Units / Unités: kg
 Circulation no. - Québec only / N° de circulation - Réservé au Québec: 110377
 Scheduled arrival date / Date d'arrivée prévue: 07/17/92
 Special handling / Emergency instructions / Manutention spéciale / Instructions d'urgence: IN CASE OF EMERGENCY CALL 1-800-667-0444
 Date shipped / Date d'expédition: 07/17/92, 12:40 AM
 Name of authorized person (print) / Nom de l'agent autorisé (caractères d'impression): Scott B. Sloan
 Signature: Scott B. Sloan
 Tel. no. / N° de tél.: (514) 392-1111

Waste identification / Identification du déchet: TOXIC / LHM/NIP
 Quantity shipped / Quantité expédiée: 73,000 kg
 Units / Unités: kg
 Circulation no. - Québec only / N° de circulation - Réservé au Québec: 110377
 Scheduled arrival date / Date d'arrivée prévue: 07/17/92
 Name of authorized person (print) / Nom de l'agent autorisé (caractères d'impression): Scott B. Sloan
 Signature: Scott B. Sloan
 Tel. no. / N° de tél.: (514) 392-1111

Date received / Date de réception
 Year / Année: 1992, Month / Mois: 07, Day / Jour: 17
 Time / Heure: 02:00 AM

Quantity received / Quantité reçue: 23,000 kg
 Units / Unités: kg

Identify any shipment discrepancy problems. Attach addendum if necessary. / Indiquer toute différence relative à l'expédition. Joindre un addenda si nécessaire.

Handling code / Code de manutention: 02
 Packaging code / Code de conditionnement: 03

Decommissioning / Démonstration: Yes / Oui, No / Non
 Vehicle / Véhicule: Yes / Oui, No / Non

Provincial ID No. / N° d'id. provincial: 25419-1233
 Address / Adresse: Box 1400, SUTTON HILLS, Q.B. J6G 2C0
 City / Ville: PLANT SITE, MONTREAL, P.Q.
 Signature: Scott B. Sloan
 Tel. no. / N° de tél.: (514) 392-1111

Manifest Reference No. / N° de référence du manifeste: 2085155-6

Reference nos. of other Manifest(s) used / N°s de références des autres manifestes utilisés

Provincial ID No. / N° d'id. provincial: 25419-1233

Consignee Information: I declare that the information contained in Part C is correct and complete. / L'information fournie par le destinataire est la même qu'en A.

Company name / Nom de l'entreprise: SASSER Fertilizers International
 Address / Adresse: Box 1400, SUTTON HILLS, Q.B. J6G 2C0
 City / Ville: PLANT SITE, MONTREAL, P.Q.
 Provincial ID No. / No d'id. provincial: 25419-1233

Date received / Date de réception: 1992, 07, 17, 02:00 AM

Quantity received / Quantité reçue: 23,000 kg
 Units / Unités: kg

Handling code / Code de manutention: 02
 Packaging code / Code de conditionnement: 03

Decommissioning / Démonstration: Yes / Oui, No / Non
 Vehicle / Véhicule: Yes / Oui, No / Non

Provincial ID No. / N° d'id. provincial: 25419-1233
 Address / Adresse: Box 1400, SUTTON HILLS, Q.B. J6G 2C0
 City / Ville: PLANT SITE, MONTREAL, P.Q.
 Signature: Scott B. Sloan
 Tel. no. / N° de tél.: (514) 392-1111

MANIFEST - MANIFESTE

This Manifest conforms to all Federal and Provincial transport and environmental regulations for hazardous materials. Ce manifeste est conforme à toutes les réglementations fédérales et provinciales sur l'emballage et le transport, requérant un manifeste.

A Consignor (Generator) / Expéditeur (Producteur)
 Company name / Nom de l'entreprise: **TIRES OIL COMPANY**
 Mailing address / Adresse postale: **2737 W. COMDOR WAY, SEATTLE, WA 98199-1233**
 Shipping site address / Origine de l'expédition: **2737 WEST COMDOR WAY SEATTLE WA 98199-1233**
 City / Ville: **SEATTLE** Province: **WA** Postal code / Code postal: **98199-1233**

Intended consignee / Destinataire prévu: **EMCO ENVIRONMENTAL SERVICES LTD.** Provincial ID No. / No d'Id. provincial: **ABR 01101**
 Address / Adresse: **200-5720 4TH STREET SE, CALGARY, AB T2H 1K7** Postal code / Code postal: **T2H 1K7**
 Receiving site address / Destination de l'expédition: **200-5720 4TH STREET SE CALGARY A.B.** Postal code / Code postal: **T2H 1K7**

B Carrier / Transporteur
 Company name / Nom de l'entreprise: **B & R TRUCKING COMPANY LTD.**
 Address / Adresse: **2300 - 70A AVE. LASKET** Prov.: **AB**
 Registration No. / No d'immatriculation: **P.S. 3671**
 Vehicle / Véhicule: **Trailer/Rail Car No. 1**
 1st remorque - wagon: **111111**
 2nd remorque - wagon: **111111**
 Point of entry / Point d'entrée: **Point of exit / Point de sortie**
 Carrier Certification: I declare that I have received waste as offered by the consignor in Part A for delivery to the intended consignee and that the information contained in Part B is complete and correct. / Déclaration du transporteur: J'affirme avoir reçu les déchets offerts par l'expéditeur dans la partie A en vue de leur livraison au destinataire désigné et que les renseignements inscrits à la partie B sont exacts et complets.
 Year / Année: **2007** Month / Mois: **11** Day / Jour: **17** Name of authorized person (print) / Nom de l'agent autorisé (caractères d'imprimable): **CHRISTOPHER W. HARRIS**
 Signature: *[Signature]* Tel. No. / No de tél.: **(403) 271-7777**

C Consignee (Receiver) / Destinataire (Réceptionnaire)
 Provincial ID No. / No d'Id. provincial: **R 1047**
 Consignee information same as intended consignee in Part A. L'information à fournir par le destinataire est la même qu'en A.
 Yes / Oui: No / Non: Non, compléter la boîte ci-dessous
 Company name / Nom de l'entreprise: **SENSOR ENVIRONMENTAL**
 Address / Adresse: **Box 1400 Snow Hills AB T0G 2C0**
 City / Ville: **Plout site** Province: **AB** Postal code / Code postal: **T0G 2C0**

Physical State / Etat physique	Shipping name of waste / Appellation réglementaire du déchet	Provincial No. / No (Quebec-Ontario only) / (Québec-Ontario seul)	Waste Identification / Identification du déchet	Quantity shipped / Quantité expédiée	Units / Lot or 1000 units / Unités	Packaging Group / Groupe d'emballage	Classification	Description / Description	Handling code / Code de manutention	Decomposition / Désintégration	Discontinuation / Arrêt	
											Yes / Oui	No / Non
S	ENVIRONMENTALLY HAZARDOUS SUBSTANCES, SOLID, N.O.S. (SOIL CONTAMINATED WITH FRAUDULENCE FERTILIZER)	32232	TDG/INP LTD/INP	23,000	kg	III	03	EMCO ENVIRONMENTAL SERVICES LTD. (TIRES OIL COMPANY)	32		Yes / Oui	No / Non
	ENVIRONMENT CANADA / R							NOTICE 02/0006/04P				

Special handling / Emergency instructions / Manutention spéciale / Instructions d'urgence
 IN CASE OF EMERGENCY CALL 1-800-667-0444
 Attached / Ci-jointes: Below / Ci-dessous:
 Circulation no. - Quebec only / No de circulation - Réservée au Québec: **1706 786-6457**
 Scheduled arrival date / Date d'arrivée prévue: **02 09 17 17:00** AM / PM
 Name of authorized person (print) / Nom de l'agent autorisé (caractères d'imprimable): **Scott B. Sloan**
 Signature: *[Signature]* Tel. no. / No de tél.: **(403) 271-7777**

D Date shipped / Date d'expédition
 Year / Année: **02** Month / Mois: **09** Day / Jour: **17** Time / Heure: **17:00**
 Consignor Certification: I declare that the information contained in Part A is correct and complete. / Déclaration de l'expéditeur: Je déclare que tous les renseignements à la partie A sont vérifiés et complets.
 Name of authorized person (print) / Nom de l'agent autorisé (caractères d'imprimable): **Scott B. Sloan**
 Signature: *[Signature]* Tel. no. / No de tél.: **(403) 271-7777**

Manifest Reference No. / No de référence du manifeste: **2085154-9**
 Reference nos. of other Manifest(s) used / Nos de références des autres manifestes utilisés: **2085154-9**

Provincial ID No. / No d'Id. provincial: **111 1973**
 Company name / Nom de l'entreprise: **B & R TRUCKING COMPANY LTD.**
 Address / Adresse: **2300 - 70A AVE. LASKET** Prov.: **AB**
 Registration No. / No d'immatriculation: **P.S. 3671**

Provincial ID No. / No d'Id. provincial: **R 1047**
 Consignee information same as intended consignee in Part A. L'information à fournir par le destinataire est la même qu'en A.
 Yes / Oui: No / Non: Non, compléter la boîte ci-dessous
 Company name / Nom de l'entreprise: **SENSOR ENVIRONMENTAL**
 Address / Adresse: **Box 1400 Snow Hills AB T0G 2C0**
 City / Ville: **Plout site** Province: **AB** Postal code / Code postal: **T0G 2C0**

Signature: **Erle G. O.** Tel. no. / No de tél.: **#803334197**

MANIFEST - MANIFESTE

This Manifest conforms to all Federal and Provincial transport and environmental legislation requiring manifesting. Ce manifeste est conforme aux législations fédérales et provinciales en matière de transport, requérant un manifeste.

Manifest Reference No. / No de référence du manifeste: **2085153-1**

A Consignor (Generator) / Expéditeur (Producteur)
 Provincial ID No. / No d'id. provincial: **133009591207**
 Company name / Nom de l'entreprise: **EMERGENCY SERVICES**
 Mailing address / Adresse postale: **2137 W. CLAYTON AVENUE** City / Ville: **MISSISSAUGA** Province: **ON** Postal code / Code postal: **M5S 1A7**
 Shipping site address / Origine de l'expédition: **2137 W. CLAYTON AVENUE** City / Ville: **MISSISSAUGA** Province: **ON** Postal code / Code postal: **M5S 1A7**
 Intended consignee / Destinataire prévu: **EMERGENCY SERVICES** Provincial ID No. / No d'id. provincial: **438 01101**
 Address / Adresse: **2137 W. CLAYTON AVENUE** City / Ville: **MISSISSAUGA** Province: **ON** Postal code / Code postal: **M5S 1A7**
 Receiving site address / Destination de l'expédition: **2137 W. CLAYTON AVENUE** City / Ville: **MISSISSAUGA** Province: **ON** Postal code / Code postal: **M5S 1A7**

B Carrier / Transporteur
 Company name / Nom de l'entreprise: **EMERGENCY SERVICES**
 Address / Adresse: **2137 W. CLAYTON AVENUE** City / Ville: **MISSISSAUGA** Province: **ON** Postal code / Code postal: **M5S 1A7**
 Vehicle / Véhicule: **TRAILER** Registration No. / No d'immatriculation: **133009591207** Prov.: **ON**
 Trailer/Rail Car No. 1 / 1^{er} remorque - wagon: **133009591207**
 Trailer/Rail Car No. 2 / 2^e remorque - wagon: **133009591207**
 Point of entry / Point de sortie: **MISSISSAUGA**
 Carrier Certification: I declare that I have received waste as offered by the consignor in Part A for delivery to the intended consignee and that the information contained in Part B is complete and correct. / Déclaration du transporteur: Je déclare avoir reçu les déchets offerts par l'expéditeur dans la partie A en vue de leur livraison au destinataire choisi et que les renseignements fournis à la partie B sont exacts et complets.
 Year / Année: **2007** Month / Mois: **02** Day / Jour: **17** Name of authorized person (print) / Nom de l'agent autorisé (caractères d'imprimés): **SCOTT B. SPOON**
 Signature: *Scott B. Spoon* Tel. no. / No de tél.: **(905) 276-8457**

C Consignee (Receiver) / Destinataire (Réceptionnaire)
 Provincial ID No. / No d'id. provincial: **R1047**
 Company name / Nom de l'entreprise: **EMERGENCY SERVICES**
 Address / Adresse: **Box 1400 Hills OB** City / Ville: **MISSISSAUGA** Province: **ON** Postal code / Code postal: **L4G 2G0**
 Receiving site address / Destination de l'expédition: **Plant site** City / Ville: **MISSISSAUGA** Province: **ON** Postal code / Code postal: **L4G 2G0**

Date received / Date de réception	Year / Année	Month / Mois	Day / Jour	Time / Heure	Quantity received / Quantité reçue	Units / Unités	Handling code / Code de manutention	Discontinuation / Déscontinuation
02	09	17	02	06:08	2300	kg	02	02

Waste identification / Identification du déchet	Provincial No. / No (Quebec-Ontario only) / (Quebec-Ontario seul)	Quantity shipped / Quantité expédiée	Units / Unités	Packaging / Containments
EMERGENCY SERVICES	32732	2300	kg	03

Special handling / Emergency instructions / Mention spéciale / Instructions d'urgence: **EMERGENCY SERVICES**
 Attached / Ci-jointes: Below / Ci-dessous:
 Circulation no. - Québec only / No de circulation - Réservée au Québec: **133009591207**
 Scheduled arrival date / Date d'arrivée prévue: **02** / **09** / **17** **12:00** P.M.
 Name of authorized person (print) / Nom de l'agent autorisé (caractères d'imprimés): **SCOTT B. SPOON**
 Signature: *Scott B. Spoon* Tel. no. / No de tél.: **(905) 276-8457**

D Handling code / Code de manutention
 If waste to be transferred, specify intended company name / SI les déchets doivent être transférés, préciser le nom du destinataire: **EMERGENCY SERVICES**
 Address / Adresse: **Box 1400 Hills OB** City / Ville: **MISSISSAUGA** Province: **ON** Postal code / Code postal: **L4G 2G0**
 Name of authorized person (print) / Nom de l'agent autorisé (caractères d'imprimés): **SCOTT B. SPOON**
 Signature: *Scott B. Spoon* Tel. no. / No de tél.: **(905) 276-8457**

E Consignor Certification / Déclaration de l'expéditeur
 I declare that the information contained in Part A is correct and complete. / Je déclare que tous les renseignements à la partie A sont exacts et complets.
 Name of authorized person (print) / Nom de l'agent autorisé (caractères d'imprimés): **SCOTT B. SPOON**
 Signature: *Scott B. Spoon* Tel. no. / No de tél.: **(905) 276-8457**

F Consignee Certification / Déclaration de l'expéditeur
 I declare that the information contained in Part B is correct and complete. / Je déclare que tous les renseignements à la partie B sont exacts et complets.
 Name of authorized person (print) / Nom de l'agent autorisé (caractères d'imprimés): **SCOTT B. SPOON**
 Signature: *Scott B. Spoon* Tel. no. / No de tél.: **(905) 276-8457**

MANIFEST - MANIFESTE

The Manifest conforms to all Federal and Provincial Transport and environmental legislation requiring manifesting.
Ce manifeste est conforme aux législations fédérales et provinciales sur l'environnement et le transport, requérant un manifeste.

A Consignor (Generator) / Expéditeur (Producteur)
 Company name / Nom de l'entreprise: **TIME OIL COMPANY**
 Mailing address / Adresse postale: **2737 W. COMBES WAY, SEATTLE, WA 98149-1233**
 Shipping site address / Origine de l'expédition: **2737 WEST COMBES WAY, SEATTLE, WA 98149-1233**
 City / Ville: **SEATTLE, WA** Province: **WA** Postal code / Code postal: **98149-1233**
 Intended destination / Destinataire prévu: **WALD ENVIRONMENTAL SERVICES INC. PER 01101**
 Address / Adresse: **200-5720 4TH STREET SE, CALGARY, AB T2H 1K7** Province: **AB** Postal code / Code postal: **T2H 1K7**
 Receiving site address / Destination de l'expédition: **200-5720 4TH STREET SE, CALGARY, AB T2H 1K7**
 City / Ville: **CALGARY, AB** Province: **AB** Postal code / Code postal: **T2H 1K7**

B Carrier / Transporteur
 Company name / Nom de l'entreprise: **Z & B WASTE COMPANY LTD.**
 Address / Adresse: **2302 - 73A AVE. CALGARY, AB** Province: **AB**
 Registration No. / No d'immatriculation: **P5 3683 BC**
 Vehicle / Véhicule: **79689W BC** Province: **BC**
 Trailer/Rail Car No. 1: **1st remarque - wagon**
 Trailer/Rail Car No. 2: **2nd remarque - wagon**
 Point of entry / Point d'entrée: **Point of exit / Point de sortie**
 Carrier Certification: I declare that I have received waste as offered by the consignor in Part A for delivery to the intended consignee and that the information contained in Part B is complete and correct. / Déclaration du transporteur: J'atteste avoir reçu les déchets offerts par l'expéditeur dans la partie A en vue de leur livraison au destinataire choisi et que les renseignements inscrits à la partie B sont exacts et complets.
 Year / Année: **09** Month / Mois: **09** Day / Jour: **17**
 Name of authorized person (print) / Nom de l'agent autorisé (caractères d'imprimés): **SCOTT B. STORM**
 Signature: *[Signature]* Tel. No. / No de tél.: **403 318 7927**

C Consignee (Receiver) / Destinataire (Réceptionnaire)
 Provincial ID No. / No d'id. provinciale: **R 1047**
 Consignee information same as intended Consignee in Part A. L'information à fournir par le destinataire est la même qu'en A. No. complete the boxed area below. Non, compléter la boîte ci-dessous.
 Company name / Nom de l'entreprise: **SENSOR ENVIRONMENTAL**
 Address / Adresse: **Box 1400**
 City / Ville: **Subs Hills AB** Province: **AB** Postal code / Code postal: **T0G 2S0**
 Receiving site address / Destination de l'expédition: **Plant site**
 City / Ville: **Plant site** Province: **AB** Postal code / Code postal: **T0G 2S0**

Manifest Reference No. / No de référence du manifeste: **2085152-3**
 Reference no. of other Manifest(s) used / No de références des autres manifestes utilisés: **2085152-3**

Physical state / Etat physique	Shipping name of waste / Appellation réglementaire du déchet	Provincial No. / No (Quebec-Ontario only) / Caractères d'imprimés	Quantity shipped / Quantités expédiées	Units / Unités (L or kg / L ou kg)	Classification	Packaging Group / Groupe d'emballage	Proteging Contents / Contenu de protection	Date received / Date de réception	Year / Année	Month / Mois	Day / Jour	Time / Heure	Identify any shipment discrepancy problems / Attach pertinent information if necessary / Indiquer toute anomalie relative à l'expédition et joindre toute information pertinente	Handling Code / Code de manutention	Discontinuation / Déclaration
S	ENVIRONMENTAL SERVICES SOLID WASTE (SOIL CONTAMINATED WITH PENTACHLORENI)	32232	33.00	kg	III	III	III	02	09	09	17	12:00		02	
	ENVIRONMENTAL SERVICES WASTE														
	ENVIRONMENTAL SERVICES WASTE														
	ENVIRONMENTAL SERVICES WASTE														

Special handling/Emergency instructions / Manutention spéciale/instructions d'urgence: **IN CASE OF EMERGENCY CALL 1-800-657-0414**

Date shipped / Date d'expédition: **02 09 17** Time / Heure: **12:00** AM/PM: **PM**
 Scheduled arrival date / Date d'arrivée prévue: **02 09 19** Year / Année: **02** Month / Mois: **09** Day / Jour: **19**

Consignor Certification: I declare that the information contained in Part A is correct and complete. / Déclaration de l'expéditeur: Je déclare que tous les renseignements à la partie A sont véridiques et complets.
 Name of authorized person (print) / Nom de l'agent autorisé (caractères d'imprimés): **Scott B. Storm** Signature: *[Signature]* Tel. No. / No de tél.: **403 318 7927**

City / Ville: **Plant site** Province: **AB** Postal code / Code postal: **T0G 2S0**
 Address / Adresse: **Plant site**
 Provincial ID No. / No d'id. provinciale: **R 1047**
 Name of authorized person (print) / Nom de l'agent autorisé (caractères d'imprimés): **Erle Guvack** Signature: *[Signature]* Tel. No. / No de tél.: **403 318 7927**

RATECH FW, INC.

May 28, 2004
TTFWI-SEA-2004-GEO16

Mr. Jerome Cruz
Washington State Department of Ecology
Northwest Region
3190 16th Avenue SE
Bellevue, WA 98008-5452

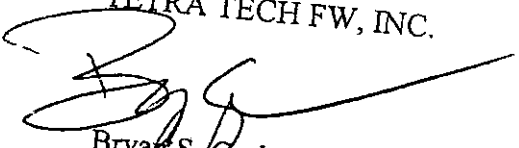
RE: Transmittal of April 2004 Groundwater Monitoring Report
Dear Mr. Cruz:

Please find enclosed herewith copies of the above referenced document produced for Time Oil Co. by Tetra Tech FW, Inc. (TTFW).

The enclosed groundwater monitoring report contains detailed descriptions of conditions encountered during regularly scheduled quarterly groundwater monitoring conducted in October 2004. Groundwater conditions observed during both monitoring events were similar to those documented during previous groundwater monitoring events. The area of affected groundwater remains fully defined and does not appear to be migrating. The next groundwater monitoring event is currently planned for July 2004.

Time Oil Co. and TTFW looks forward to working with Ecology on this project and the upcoming implementation of the Engineering Design Report and Cleanup Action Plan, previously submitted for Ecology's review under the Voluntary Cleanup Program.

Sincerely,
TETRA TECH FW, INC.



Bryant S. Graham, R.G., L.Hg
Project Manager

Encl: "Quarterly Groundwater Sampling Report for April 2004," May 2004

cc: Mr. Scott Sloan - Time Oil Company
Mr. Kevin Murphy - Time Oil Company
Mr. Brad Maza - Gordon, Thomas, Honeywell, et al.
Ms. Patty Dost - Schwabe, Williamson & Wyatt



11