



STORMWATER INSPECTION REPORT

Inspection ID: T115 – 12/05/2006

Location: Terminal 115
Report Date: 12/05/2006
Inspection Date: 08/2006
Present: Peter Dumaliang, Phoinix Corporation
Bryan Chernick, Phoinix Corporation
Audrie Rector, Phoinix Corporation
Matt Eyer, Phoinix Corporation
Michael Lueskow, Northland Terminal Services, Inc.

Purpose: Inspection to locate or verify all drainage structures on site, including structures related to the separate stormwater system as well as the combined sewer system. The inspection is a required component for the Port of Seattle to fulfill their NPDES Phase I Municipal Permit.

Attachments:

- 1.) Field Verification Checklists (4 pages)
- 2.) Access database (20 pages)
- 3.) Site Boundary Map with Tenant Area Estimates (1 page)
- 4.) Map of the site, with modifications from the inspection (3 pages)
- 5.) List of potential tenants at the site (1 page)
- 6.) Map of the site provided by the Northland Terminal Services, Inc. (1 page)

Inspection Notes:

Structure Locations, Drainage Sub-Basins and Outfalls

- The inspection started with a discussion of the inspection process with Phoinix personnel and Michael Lueskow of Northland Services, Inc. based on the available GIS site maps provided by Aspect Consulting as well as a site map provided by the Mr. Lueskow.
- All of the Phoinix inspectors were trained by Mr. Lueskow on Northland's safety procedures and recommendations prior to conducting the inspection.
- The locations of type I catch basins, type II manholes, oil-water separators, and roof drains were verified during the inspection.
- The general flow direction within the stormwater system and the surface flows were also determined during the inspection.
- The tenant boundaries shown on the Site Boundary Map are approximations derived from field observation.

Terminal 115 Inspection		
Status	Structure Type	Notes
Stormwater System: Approximately 366 structures within the T115 property boundary.	<ul style="list-style-type: none"> 8 Outfalls 	<ul style="list-style-type: none"> Verified 7 outfalls by boat Could not verify 1 of the 8 outfalls
	<ul style="list-style-type: none"> 224 Catch Basins (Type I) 45 Manholes (Type II) 18 Trench Drains 73 Deck Drains 3 Oil Water Separators Vaults 3 Roof Drains 	
37 sewer structures within the site boundary.		
75 structures could not be located		
33 structures verified as no longer there		

Action Items:

- Verify northern most outfall that could not be located
- Obtain SWPPP from Northland Terminal Services, Inc.
- Obtain General SW Permit SO3000471D from Northland Terminal Services, Inc.
- Obtain any permits or SWPPPs from NW Container Services Inc.
- Determine tenant boundaries within the site.

Pictures:



Photo 100-0932 – Looking west at outfall T115_07, a 36" concrete pipe.



Photo 100-0935 – Looking west at outfall T115_06, a 24" concrete pipe.



Photo 100-0936 – Looking west at outfall T115_05. This outfall is a 30” concrete pipe.

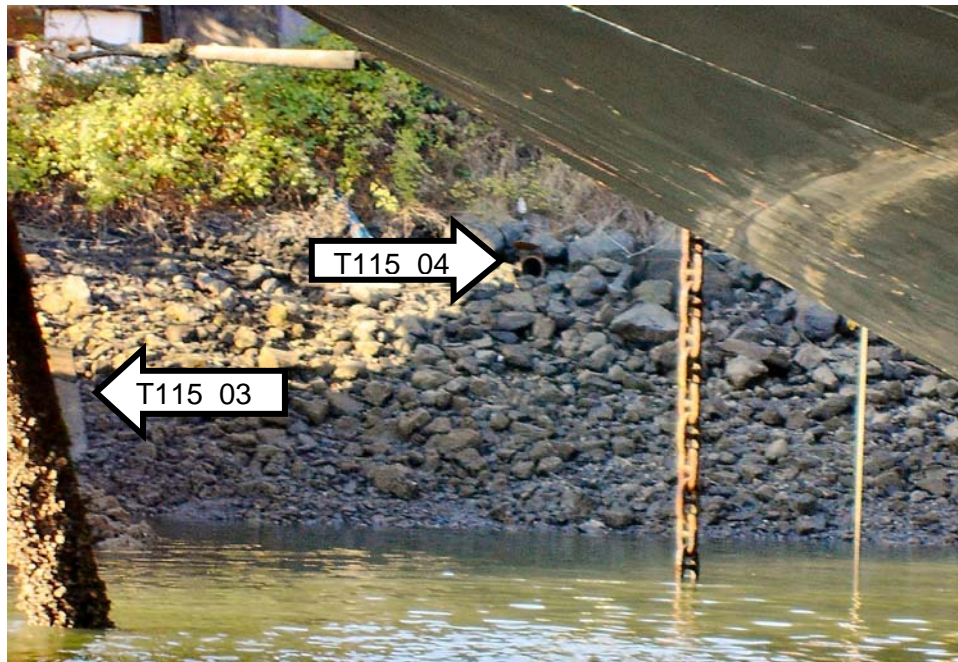


Photo 100-0937 – Looking west at outfall T115_04 (right) a 12” composite pipe and the edge of outfall T115_03 (left). The ship in the upper right corner is also shown in Photo 100-0938.



Photo 100-0938 – Looking west at outfall T115_03, a 32" concrete outfall. Outfall T115_02 an 18" concrete pipe, shown on the left side of the photo. Outfall T115_04, a 12" composite pipe, is just out of view on the right side of photo. The edge of the ship on the right side of photo is also in photo100-0937.

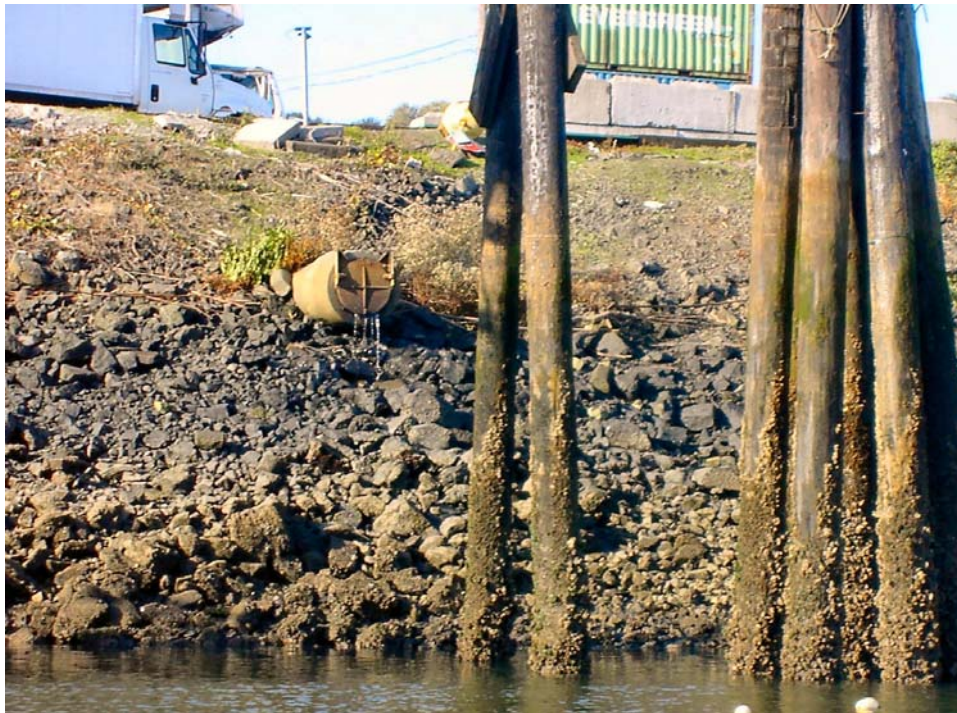


Photo 100-0940 – Looking west at outfall T115_001, a 24" concrete pipe.



Photo 100-0842 – Looking NE at outfall T115_01.



Photo 100-0842 – Looking NW at trench drain 637A.



Photo 100-0840 – Looking east at CB #530. This picture also shows the condition of portions of the surfaces in the NW Container Services tenant area on the western section of the site.



Photo 100-0839 – Looking at CB #434. Showing the sump pump and filter box insert in the CB. The pump diverts stormwater to a treatment system, shown in the background of the photo, and then back to the CB.



Photo 100-0838 - Shows the sump pump and filter box insert in the CB #434.

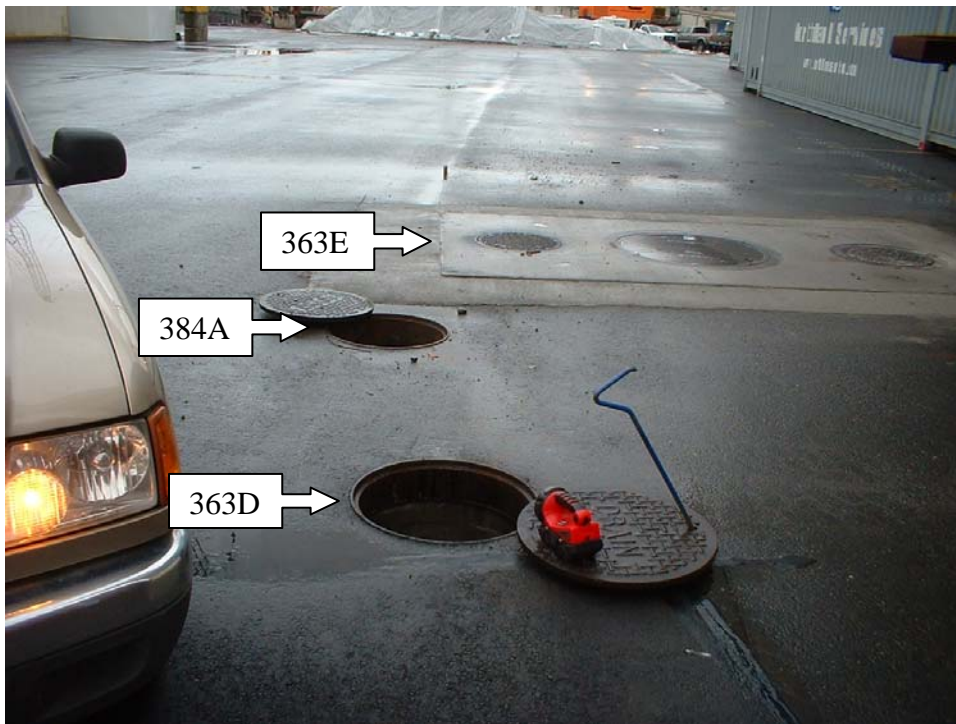


Photo 100-0035 – Looking NW at MH 363D, MH 384A and Oil Water Separator 363E.



Photo 100-0034 – Looking into MH 363D, showing the sediment trap on south wall.



Photo 100-0033 – Looking into MH 384 showing an enclosed line with shut off valve.

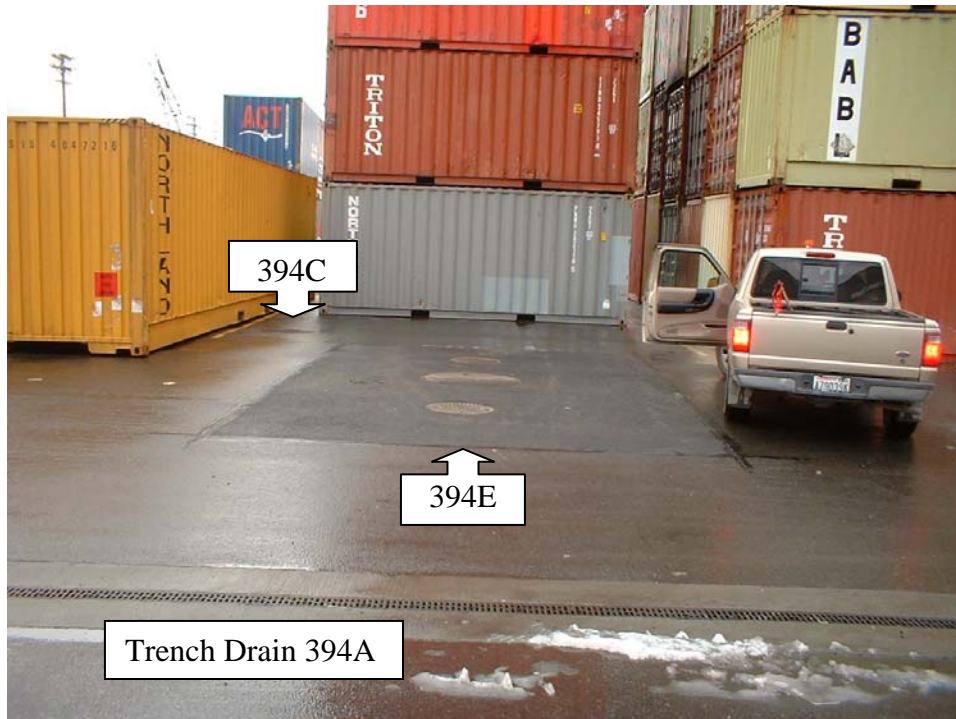


Photo 100-0023 – Looking SW at Trench Drain 394A, Oil Water Separator 394E, and MH 394C.



Photo 100-0030 – Looking S at MH 513, MH 513B, CB 513 and Oil Water Separator 513D. .



Photo 100-0027 – Looking into MH 513B showing an enclosed pipe and shut off valve.



Photo 100-0031 – Looking into MH 513A showing sediment trap on south wall and pipe possibly coming in from MH 513B (to the right of sediment trap).



Facility Drainage Map Field Verification Checklist

INSPECTION ID: T115_12_5_2006

Marilyn Guthrie, Stormwater Program Manager
2711 Alaskan Way, Seattle WA 98121

Field Personnel: Bryan Chernick, Audrie Rector, Matt Eyer

(206) 728-3347

Date/Time: Inspection date: 08/2006

FACILITY: Terminal 115

Page: 1 of 2

Information Required Before Going to the Facility - obtain from files or contact the Facility

Name of Tenant or Seaport Facility: Northland Terminal Services Inc., Terminal 115

Have Facility Map: Date of Map: Aspect Map Only Have Tenant List/Locations:

Contact: Name/Title: Michael Lueskow, Operations Manager

Address: 6700 W Marginal Wy SW City: Seattle State: WA Zip: 98106

Phone: (206)763-3000 Fax:(206) 762-1041 Email: mlueskow@northlandservices.com

Other Contacts: See attached tenant list for other tenants

Type of Facility/Land Use: Manufacturing Transportation Processing Other SIC Code: 6719

NPDES Permit: Non Get Copy In File SWPPP: None Get Copy In File

Sanitary Sewer Discharge Auth/Permit: None Get Copy In File

NOTES: NPDES GEN. SW Permit, SO-3000471D

Feature		FIELD VERIFY & MARKUP DRAINAGE MAP - Information to Collect or Attribute to Verify				
Nearby Surface and Receiving Water	Receiving Water:	Duamish, Elliot Bay/Puget Sound			Notes: (Locate on map where possible)	
	WRIA#:	9				
	Streams, creeks, tributaries:	N/A				
	Wetlands:	N/A				
Piping	Connections	<input checked="" type="checkbox"/>	Assumptions: Pipe attributes are incorporated into the database managing the catch basins and manholes. Pipes are in standard sizes and materials. Observed pipe connections designated with solid lines, inferred pipes with dashed lines. Measurement of pipe depth is from the top of the pipe to the highest point on the lid rim.			
	Flow Direction	<input checked="" type="checkbox"/>				
	Pipe Depth	<input type="checkbox"/>				
	Pipe Size	<input type="checkbox"/>				
	Pipe Material	<input type="checkbox"/>				
Catch Basins Type I	Verify Location	<input checked="" type="checkbox"/>	Assumptions: Catch basins have open grates (lids) that collect surface water runoff. Measurement of the pipe depth is from the top of the pipe to the highest point on the lid rim. Measurement of the structure depth is from the bottom of the structure to the highest point on the lid rim.			
	Flow Direction	<input checked="" type="checkbox"/>				
	Pipe Location	<input checked="" type="checkbox"/>				
	Outlet Type/Location	<input type="checkbox"/>				
	Structure Depth	<input type="checkbox"/>				
Manholes Type II	Verify Location	<input checked="" type="checkbox"/>	Assumptions: Manholes, unless otherwise noted, do not have open grates (lids) that collect surface water runoff. Measurement of the pipe depth is from the top of the pipe to the highest point on the lid rim. Measurement of the structure depth is from the bottom of the structure to the highest point on the lid rim.			
	Flow Direction	<input checked="" type="checkbox"/>				
	Pipe Location/Depth	<input checked="" type="checkbox"/>				
	Outlet Type/Location	<input type="checkbox"/>				
	Structure Depth	<input type="checkbox"/>				
Ditches & Channels	Vegetated	<input type="checkbox"/>	Notes:			
	Constructed	<input type="checkbox"/>				
	Flow Direction	<input type="checkbox"/>				
Trench Drains	Flow Direction	<input checked="" type="checkbox"/>	Assumptions: Trench drains, unless otherwise noted, have open grates (lids) that collect surface water runoff. Measurement of the structure depth is from the bottom of the structure to the bottom of the rim. Measurement of the structure width is measured between the sides of each structure wall.			
	Outlet Type	<input checked="" type="checkbox"/>				
	Structure Depth	<input checked="" type="checkbox"/>				
Areas of Sheet Flow	Flow Direction	<input type="checkbox"/>	Assumptions: Include areas of sheet flow that discharge only to a receiving water or leave the site and are not collected within site catch basins, trench drains, ditches or channels.			
	Marked on Map	<input type="checkbox"/>				
Outfalls	Outfall#	Size	Condition:	Visible & safely accessible from land?	Discharges to, Distance:	
	T_115_01	24"	Concrete	Yes		
	T_115_02	18"	Concrete	No		
	T_115_03	36"	Concrete	No		
	T_115_04	12"	Composite	No		
	T_115_05	30"	Concrete	No		
	T_115_06	24"	Concrete	No		
	T_115_07	36"	Concrete	No		
T_115_08		Could not verify	No			
Storm-water Treatment Facilities	Check all types that apply and locate on map					
	Presettling Basins	<input type="checkbox"/>	Wet Biofiltration Swales	<input type="checkbox"/>	SW Treatment Wetlands	<input type="checkbox"/>
	Infiltration Basins	<input type="checkbox"/>	Cont.Flow Biofiltration Swales	<input type="checkbox"/>	Combined Detention & Wetpool	<input type="checkbox"/>
	Infiltration Trenches	<input type="checkbox"/>	Basic Filter Strips	<input type="checkbox"/>	Oil/Water Separator-Baffle	<input checked="" type="checkbox"/>
	Sand Filter Vaults	<input type="checkbox"/>	Narrow Area Filter Strips	<input type="checkbox"/>	O/W Separator-Coalescing Plate	<input type="checkbox"/>
	Linear Sand Filters	<input type="checkbox"/>	Wet Ponds	<input type="checkbox"/>	Media Filters	<input type="checkbox"/>
	Biofiltration Swales	<input type="checkbox"/>	Wet Vaults	<input type="checkbox"/>	Amended Sand Filters	<input type="checkbox"/>
		<input type="checkbox"/>	Catch Basin Inserts	<input checked="" type="checkbox"/>	High Efficiency Street Sweepers	<input type="checkbox"/>
		<input type="checkbox"/>		<input type="checkbox"/>	Manuf. Storm Drain Structures	<input type="checkbox"/>
		<input type="checkbox"/>		<input type="checkbox"/>	Construction area only.	
		<input type="checkbox"/>		<input type="checkbox"/>		

Facility Drainage Map Field Verification Checklist



INSPECTION ID: T115_12_5_2006

Marilyn Guthrie, Stormwater Program Manager
 2711 Alaskan Way, Seattle WA 98121
 (206) 728-3347

Field Personnel: Bryan Chernick, Audrie Rector, Matt Eyer

Date/Time: Inspection date: 8/2006

FACILITY: Terminal 115

Page: 2 of 2

Sub Area Drainage	Delineate	X	Notes: All observed sub-basins designated on the map with solid lines. Inferred sub-basins are designated with dashed lines.
	Flow Direction	X	
CSO Locations & Pump Stations	Verify Location	N/A	Notes: No Pump Stations adjacent to site.
	Flow Direction	N/A	
KC / City of Seattle Storm Drains & Outfalls	Verify Location	X	Notes: Outfall T115_03, a 72" concrete outfall, is potentially a City of Seattle outfall.
	Flow Direction	X	
Comments	Field Verification Checklist refers to the Terminal 115 site as defined on the Site Boundary Map provided in PDF format by the Port of Seattle.		



Facility Drainage Map Field Verification Checklist

INSPECTION ID: T115_12_5_2006

Marilyn Guthrie, Stormwater Program Manager
2711 Alaskan Way, Seattle WA 98121

Field Personnel: Bryan Chernick, Audrie Rector, Matt Eyer

(206) 728-3347

Date/Time: Inspection date: 8/2006

FACILITY: Terminal 115

Page: 1 of 2

Information Required Before Going to the Facility - obtain from files or contact the Facility

Name of Tenant or Seaport Facility: NW Container Services, Terminal 115

Have Facility Map: [X] Date of Map: Aspect Map Only Have Tenant List/Locations: [X]

Contact: Name/Title: Bob Sherwood, Operations Manager

Address: 6110 W Marginal Wy SW City: Seattle State: WA Zip: 98106

Phone: (206)764-4500 Fax:(206) 763-6478 Email: bsherwood@nwcontainer.com

Other Contacts: See attached tenant list for other tenants

Type of Facility/Land Use: Manufacturing [] Transportation [X] Processing [] Other [] SIC Code: []

NPDES Permit: Non-Get Copy [X] In File [] SWPPP: None [] Get Copy [X] In File []

Sanitary Sewer Discharge Auth/Permit: None [X] Get Copy [] In File []

NOTES:

Feature		FIELD VERIFY & MARKUP DRAINAGE MAP - Information to Collect or Attribute to Verify			
Nearby Surface and Receiving Water	Receiving Water:	Duamish, Elliot Bay/Puget Sound			Notes: (Locate on map where possible)
	WRIA#:	9			
	Streams, creeks, tributaries:	N/A			
	Wetlands:	N/A			
Piping	Connections	[X]	Assumptions: Pipe attributes are incorporated into the database managing the catch basins and manholes. Pipes are in standard sizes and materials. Observed pipe connections designated with solid lines, inferred pipes with dashed lines. Measurement of pipe depth is from the top of the pipe to the highest point on the lid rim.		
	Flow Direction	[X]			
	Pipe Depth	[No]			
	Pipe Size	[No]			
	Pipe Material	[No]			
Catch Basins Type I	Verify Location	[X]	Assumptions: Catch basins have open grates (lids) that collect surface water runoff. Measurement of the pipe depth is from the top of the pipe to the highest point on the lid rim. Measurement of the structure depth is from the bottom of the structure to the highest point on the lid rim.		
	Flow Direction	[X]			
	Pipe Location	[No]			
	Outlet Type/Location	[X]			
	Structure Depth	[No]			
Manholes Type II	Verify Location	[X]	Assumptions: Manholes, unless otherwise noted, do not have open grates (lids) that collect surface water runoff. Measurement of the pipe depth is from the top of the pipe to the highest point on the lid rim. Measurement of the structure depth is from the bottom of the structure to the highest point on the lid rim.		
	Flow Direction	[X]			
	Pipe Location/Depth	[No]			
	Outlet Type/Location	[No]			
	Structure Depth	[No]			
Ditches & Channels	Vegetated	[N/A]	Notes:		
	Constructed	[N/A]			
	Flow Direction	[N/A]			
Trench Drains	Flow Direction	[X]	Assumptions: Trench drains, unless otherwise noted, have open grates (lids) that collect surface water runoff. Measurement of the structure depth is from the bottom of the structure to the bottom of the rim. Measurement of the structure width is measured between the sides of each structure wall.		
	Outlet Type	[No]			
	Structure Depth	[No]			
Areas of Sheet Flow	Flow Direction	[No]	Assumptions: Include areas of sheet flow that discharge only to a receiving water or leave the site and are not collected within site. catch basins, trench drains, ditches or channels.		
	Marked on Map	[No]			
Outfalls	Outfall#	Size	Condition:	Visible & safely acessbile from land?	Discharges to, Distance:
Storm-water Treatment Facilities	Check all types that apply and locate on map				
	Presettling Basins [] Infiltration Basins [] Infiltration Trenches [] Sand Filter Vaults [] Linear Sand Filters [] Biofiltration Swales [] Water Treatment System [X]	Wet Biofiltration Swales [] Cont.Flow Biofiltration Swales [] Basic Filter Strips [] Narrow Area Filter Strips [] Wet Ponds [] Wet Vaults [] Catch Basin Inserts [X]	SW Treatment Wetlands [] Combined Detention & Wetpool [] Oil/Water Separator-Baffle [] O/W Separator-Coalescing Plate [] Media Filters [] Amended Sand Filters [] High Efficiency Street Sweepers [] Manuf. Storm Drain Structures []	Construction area only.	

Facility Drainage Map Field Verification Checklist



INSPECTION ID: T115_12_5_2006

Marilyn Guthrie, Stormwater Program Manager
 2711 Alaskan Way, Seattle WA 98121
 (206) 728-3347

Field Personnel: [Bryan Chernick](#), [Audrie Rector](#), [Matt Eyer](#)

Date/Time: [Inspection date: 8/2006](#)

FACILITY: [Terminal 115](#)

Page: 2 of 2

Sub Area Drainage	Delineate	X	Notes: All observed sub-basins designated on the map with solid lines. Inferred sub-basins are designated with dashed lines.
	Flow Direction	X	
CSO Locations & Pump Stations	Verify Location	N/A	Notes: No Pump Stations adjacent to site.
	Flow Direction	N/A	
KC / City of Seattle Storm Drains & Outfalls	Verify Location	N/A	Notes:
	Flow Direction	N/A	
Comments	Field Verification Checklist refers to the Terminal 115 site as defined on the Site Boundary Map provided in PDF format by the Port of Seattle.		

Site	ID Number	Date	Status	Structure	Comments
T115	311	8/3/2006	V	CB	
T115	312	8/3/2006	V	CB	
T115	313	8/3/2006	V	CB	
T115	314	8/3/2006	V	CB	
T115	315	8/3/2006	V	CB	
T115	316	8/3/2006	V	MH	CANNOT OPEN
T115	317	8/3/2006	V	MH	CANNOT OPEN
T115	318	8/3/2006	V	CB	FILTER SOCK
T115	319	8/3/2006	N/A		
T115	320	8/3/2006	V	CB	FILTER SOCK
T115	321	8/3/2006	V	CB	
T115	322	8/3/2006	V	CB	
T115	323	8/3/2006	V	CB	
T115	324	8/3/2006	V	CB	SIGNIFICANT AMOUNTS OF
T115	325	8/3/2006	V	DECK DRAIN	
T115	325A	8/3/2006	V	TRENCH DRAIN	
T115	325B	8/3/2006	V	TRENCH DRAIN	
T115	325C	8/3/2006	V	TRENCH DRAIN	
T115	326	8/3/2006	N/A		
T115	327	8/3/2006	V	DECK DRAIN	
T115	328	8/3/2006	V	MH	CB LID ON MH
T115	329	8/3/2006	V	CB	
T115	330	8/3/2006	V	CB	
T115	331	8/3/2006	V	DECK DRAIN	
T115	332	8/3/2006	V	DECK DRAIN	
T115	333	8/3/2006	VNT		
T115	334	8/3/2006	V	DECK DRAIN	

Site	ID Number	Date	Status	Structure	Comments
T115	335	8/3/2006	CNV		UNDER MATERIAL
T115	336	8/3/2006	V	DECK DRAIN	
T115	337	8/3/2006	CNV		UNDER MATERIAL
T115	338	8/3/2006	V	DECK DRAIN	
T115	339	8/3/2006	V	MH	CB LID ON MH
T115	340	8/3/2006	V	DECK DRAIN	UNDER MATERIAL
T115	341	8/3/2006	V	DECK DRAIN	
T115	342	8/3/2006	CNV		UNDER MATERIAL
T115	343	8/3/2006	VNT		
T115	344	8/3/2006	VNT		
T115	345	8/3/2006	V	CB	
T115	346	8/3/2006	V	DECK DRAIN	
T115	347	8/3/2006	VNT		
T115	348	8/3/2006	VNT		
T115	349	8/3/2006	VNT		
T115	350	8/3/2006	VNT		
T115	351	8/3/2006	V	SEWER	
T115	352	8/3/2006	CNV		
T115	353	8/3/2006	VNT		
T115	354	8/3/2006	VNT		
T115	355	8/3/2006	VNT		
T115	356	8/3/2006	VNT		
T115	357	8/3/2006	VNT		
T115	358	8/3/2006	V	MH	
T115	359	8/3/2006	V	CB	
T115	360	8/3/2006	V	CB	
T115	361	8/3/2006	V	DECK DRAIN	

Site	ID Numbe	Date	Status	Structure	Comments
T115	362	8/3/2006	VNT		
T115	363	8/3/2006	VNT		
T115	363A	8/3/2006	V	TRENCH DRAIN	
T115	363B	8/3/2006	V	CB	
T115	363C	8/3/2006	V	TRENCH DRAIN	
T115	363D	8/3/2006	V	MH	SEDIMENT TRAP OUTLET.
T115	363E	8/3/2006	V	VAULT	OIL WATER SEPARATOR. LID
T115	364	8/3/2006	VNT		
T115	365	8/3/2006	V	CB	SUMP PUMP INSTALLED ABOVE
T115	366	8/3/2006	V	CB	
T115	367	8/3/2006	V	DECK DRAIN	
T115	368	8/3/2006	V	DECK DRAIN	
T115	369	8/3/2006	V	CB	
T115	370	8/3/2006	CNV		UNDER MATERIAL
T115	371	8/3/2006	V	DECK DRAIN	
T115	372	8/3/2006	VNT		
T115	373	8/3/2006	V	DECK DRAIN	
T115	374	8/3/2006	V	DECK DRAIN	
T115	375	8/3/2006	V	DECK DRAIN	
T115	376	8/3/2006	V	CB	
T115	377	8/3/2006	V	DECK DRAIN	
T115	378	8/3/2006	V	DECK DRAIN	
T115	379	8/3/2006	V	CB	
T115	380	8/3/2006	V	CB	
T115	381	8/3/2006	CNV		INSIDE SHOP AREA
T115	382	8/3/2006	VNT		
T115	383	8/3/2006	V	CB	LOOKS NEW.

Site	ID Numbe	Date	Status	Structure	Comments
T115	384	8/3/2006	VNT		
T115	384A	8/3/2006	V	MH	next to oil water separator. Enclosed
T115	385	8/3/2006	V	DECK DRAIN	
T115	386	8/3/2006	V	DECK DRAIN	
T115	387	8/3/2006	V	DECK DRAIN	
T115	388	8/3/2006	V	MH	CB LID OVER MH
T115	389	8/3/2006	V	DECK DRAIN	
T115	390	8/3/2006	V	CB	
T115	391	8/3/2006	V	DECK DRAIN	
T115	392	8/3/2006	V	DECK DRAIN	
T115	393	8/3/2006	V	CB	
T115	393A	8/3/2006	V	CB	NEW CATCH BASIN.
T115	393B	8/3/2006	V	TRENCH DRAIN	
T115	394	8/3/2006	VNT		
T115	394A		V	TRENCH DRAIN	
T115	394B		V	CB	TIES INTO TRENCH DRAIN AND OUTLETS
T115	394C		V	MH	WATER WITHIN 2" OF THE TOP OF THE
T115	394D	8/3/2006	V	MH	OULET TO NE, SEDIMENT TRAP.
T115	394E	8/3/2006	V	VAULT	OIL WATER SEPARATOR. LID
T115	395	8/3/2006	VNT		
T115	396	8/3/2006	V	MH	CB LID ON MH, COULD NOT OPEN
T115	397	8/3/2006	V	DECK DRAIN	
T115	398	8/3/2006	V	CB	
T115	399	8/3/2006	V	CB	SCREEN UNDER GRATE
T115	400	8/3/2006	CNV		
T115	401	8/3/2006	CNV		
T115	402	8/3/2006	V	CB	

Site	ID Numbe	Date	Status	Structure	Comments
T115	403	8/3/2006	CNV		UNDER MATERIAL
T115	404	8/3/2006	V	DECK DRAIN	
T115	405	8/3/2006	V	DECK DRAIN	
T115	406	8/3/2006	V	DECK DRAIN	
T115	407	8/3/2006	V	MH	
T115	408	8/3/2006	CNV		UNDER MATERIAL
T115	409	8/3/2006	V	DECK DRAIN	
T115	410	8/3/2006	N/A		
T115	411	8/3/2006	N/A		
T115	412	8/3/2006	V	DECK DRAIN	
T115	413	8/3/2006	N/A		
T115	414	8/3/2006	V	DECK DRAIN	
T115	416	8/3/2006	V	DECK DRAIN	UNDER MATERIAL
T115	417	8/3/2006	V	DECK DRAIN	
T115	418	8/3/2006	CNV		
T115	419	8/3/2006	V	MH	CB LID OVER MH
T115	420	8/3/2006	V	CB	COULD NOT OPEN
T115	421	8/3/2006	V	CB	
T115	422	8/3/2006	V	MH	
T115	423	8/3/2006	V	CB	FILTER SOCK
T115	423A	8/3/2006	V	TRENCH DRAIN	
T115	423B	8/3/2006	V	CB	
T115	424	8/3/2006	V	CB	
T115	425	8/3/2006	VNT		
T115	426	8/3/2006	V	DECK DRAIN	
T115	427	8/3/2006	VNT		
T115	428	8/3/2006	VNT		

Site	ID Number	Date	Status	Structure	Comments
T115	429	8/3/2006	VNT		
T115	430	8/3/2006	VNT		
T115	431	8/3/2006	CNV		
T115	432	8/3/2006	VNT		
T115	433	8/3/2006	VNT		
T115	433A	8/3/2006	V	CB	CATCH BASIN TIES INTO TRENCH DRAIN.
T115	433B	8/3/2006	V	TRENCH DRAIN	
T115	433C		V	CB	OUTLET TO THE W.
T115	434	8/3/2006	V	CB	FILTER BASKET, SUMP PUMP GOING TO
T115	435	8/3/2006	V	DECK DRAIN	
T115	436	8/3/2006	V	CB	
T115	437	8/3/2006	V	DECK DRAIN	
T115	438	8/3/2006	CNV		
T115	439	8/3/2006	V	CB	
T115	440	8/3/2006	CNV		
T115	441	8/3/2006	V	CB	SIGNIFICANT AMOUNTS OF
T115	442	8/3/2006	V	DECK DRAIN	
T115	443	8/3/2006	V	DECK DRAIN	
T115	444	8/3/2006	V	DECK DRAIN	
T115	445	8/3/2006	CNV		UNDER MATERIAL
T115	446	8/3/2006	CNV		
T115	447	8/3/2006	V	RD	
T115	448	8/3/2006	V	CB	
T115	449	8/3/2006	V	DECK DRAIN	
T115	450	8/3/2006	V	CB	FILTER SOCK
T115	451	8/3/2006	V	DECK DRAIN	
T115	452	8/3/2006	CNV		

Site	ID_Numbe	Date	Status	Structure	Comments
T115	453	8/3/2006	V	RD	
T115	454	8/3/2006	CNV		
T115	455	8/3/2006	V	DECK DRAIN	
T115	456	8/3/2006	V	DECK DRAIN	
T115	457	8/3/2006	V	RD	
T115	458	8/3/2006	V	CB	FILTER SOCK
T115	459	8/3/2006	V	DECK DRAIN	
T115	460	8/3/2006	CNV		
T115	461	8/3/2006	V	DECK DRAIN	
T115	462	8/3/2006	CNV		
T115	463	8/3/2006	CNV		UNDER MATERIAL
T115	464	8/3/2006	V	CB	
T115	465	8/3/2006	CNV		
T115	466	8/3/2006	V	CB	
T115	467	8/3/2006	V	DECK DRAIN	
T115	468	8/3/2006	V	DECK DRAIN	
T115	469	8/3/2006	V	DECK DRAIN	
T115	470	8/3/2006	V	DECK DRAIN	
T115	471	8/3/2006	CNV		
T115	472	8/3/2006	V	DECK DRAIN	
T115	473	8/3/2006	V	DECK DRAIN	
T115	474	8/3/2006	CNV		
T115	475	8/3/2006	V	SEWER	
T115	476	8/3/2006	CNV		
T115	477	8/3/2006	V	DECK DRAIN	
T115	478	8/3/2006	V	DECK DRAIN	
T115	479	8/3/2006	CNV		

Site	ID Numbe	Date	Status	Structure	Comments
T115	479A	8/3/2006	V	CB	NEW CATCH BASIN BETWEEN TRENCH
T115	479B	8/3/2006	V	TRENCH DRAIN	W OF CB 479A.
T115	479C	8/3/2006	V	TRENCH DRAIN	E OF CB 479A.
T115	480	8/3/2006	CNV		
T115	481	8/3/2006	V	DECK DRAIN	
T115	482	8/3/2006	CNV		
T115	483	8/3/2006	CNV		
T115	484	8/3/2006	V	CB	
T115	485	8/3/2006	CNV		
T115	486	8/3/2006	V	DECK DRAIN	
T115	487	8/3/2006	V	CB	
T115	488	8/3/2006	V	DECK DRAIN	
T115	489	8/3/2006	CNV		
T115	490	8/3/2006	V	DECK DRAIN	
T115	491	8/3/2006	CNV		
T115	492	8/3/2006	V	DECK DRAIN	
T115	493	8/3/2006	V	SEWER	
T115	494	8/3/2006	N/A		
T115	495	8/3/2006	CNV		UNDER MATERIAL
T115	496	8/3/2006	V	DECK DRAIN	
T115	497	8/3/2006	CNV		
T115	497A	8/3/2006	V	CB	CB AT E END OF TRENCH DRAIN 497B.
T115	497B	8/3/2006	V	TRENCH DRAIN	
T115	498	8/3/2006	CNV		
T115	499	8/3/2006	V	CB	
T115	500	8/3/2006	V	DECK DRAIN	
T115	501	8/3/2006	CNV		

Site	ID Number	Date	Status	Structure	Comments
T115	502	8/3/2006	V	DECK DRAIN	
T115	503	8/3/2006	V	DECK DRAIN	
T115	504	8/3/2006	V	DECK DRAIN	
T115	505	8/3/2006	CNV		
T115	506	8/3/2006	CNV		UNDER STEEL PLATE
T115	507	8/3/2006	V	DECK DRAIN	
T115	508	8/3/2006	VNT		
T115	509	8/3/2006	CNV		
T115	510	8/3/2006	V	DECK DRAIN	
T115	511	8/3/2006	V	DECK DRAIN	
T115	512	8/3/2006	CNV		
T115	513	8/3/2006	V	CB	
T115	513A	8/3/2006	V	MH	4 INLETS, OUTLET IS SEDIMENT TRAP TO
T115	513B	8/3/2006	V	MH	ENCLOSED PIPE WITH SHEAR GATE BELL
T115	513C		V	TRENCH DRAIN	LINKED TO MH 513A
T115	513D	8/3/2006	V	VAULT	OIL WATER SEPARATOR. LID
T115	514	8/3/2006	V	DECK DRAIN	
T115	515	8/3/2006	CNV		
T115	516	8/3/2006	CNV		
T115	517	8/3/2006	V	DECK DRAIN	
T115	518	8/3/2006	V	CB	
T115	519	8/3/2006	V	DECK DRAIN	
T115	520	8/3/2006	V	CB	
T115	521	8/3/2006	V	DECK DRAIN	
T115	522	8/3/2006	V	DECK DRAIN	
T115	523	8/3/2006	V	DECK DRAIN	
T115	524	8/3/2006	CNV		

Site	ID Number	Date	Status	Structure	Comments
T115	524A	8/3/2006	V	CB	CATCH BASIN BETWEEN TRENCH
T115	524B	8/3/2006	V	TRENCH DRAIN	
T115	524C	8/3/2006	V	TRENCH DRAIN	
T115	525	8/3/2006	V	CB	
T115	526	8/3/2006	VNT		
T115	527	8/3/2006	V	CB	
T115	528	8/3/2006	V	MH	
T115	529	8/3/2006	CNV		
T115	530	8/3/2006	V	CB	
T115	531	8/3/2006	V	SEWER	
T115	532	8/3/2006	V	CB	
T115	533	8/3/2006	V	CB	
T115	534	8/3/2006	V	MH	
T115	535	8/3/2006	CNV		
T115	536	8/3/2006	V	CB	COULD NOT OPEN
T115	537	8/3/2006	V	CB	
T115	538	8/3/2006	V	CB	
T115	539	8/3/2006	CNV		
T115	540	8/3/2006	V	MH	
T115	541	8/3/2006	N/A		
T115	542	8/3/2006	V	MH	
T115	543	8/3/2006	V	CB	
T115	544	8/3/2006	V	CB	
T115	545	8/3/2006	V	CB	
T115	546	8/3/2006	V	CB	
T115	547	8/3/2006	V	CB	UNDER CONTAINER
T115	548	8/3/2006	V	CB	UNDER CONTAINER

Site	ID Number	Date	Status	Structure	Comments
T115	549	8/3/2006	V	CB	
T115	550	8/3/2006	V	CB	
T115	551	8/3/2006	CNV		
T115	552	8/3/2006	V	CB	
T115	553	8/3/2006	V	CB	FILTER SOCK
T115	554	8/3/2006	V	MH	
T115	555	8/3/2006	V	CB	
T115	556	8/3/2006	CNV		UNDER CONTAINER
T115	557	8/3/2006	V	CB	
T115	558	8/3/2006	V	CB	
T115	559	8/3/2006	CNV		
T115	560	8/3/2006	V	CB	
T115	561	8/3/2006	V	CB	FILTER SOCK
T115	562	8/3/2006	V	CB	
T115	563	8/3/2006	CNV		
T115	564	8/3/2006	CNV		
T115	565	8/3/2006	V	CB	FILTER SOCK
T115	566	8/3/2006	V	MH	
T115	567	8/3/2006	CNV		
T115	568	8/3/2006	V	CB	
T115	569	8/3/2006	CNV		
T115	570	8/3/2006	V	CB	
T115	571	8/3/2006	CNV		
T115	572	8/3/2006	CNV		
T115	573	8/3/2006	V	CB	
T115	574	8/3/2006	V	CB	
T115	575	8/3/2006	V	CB	

Site	ID Number	Date	Status	Structure	Comments
T115	576	8/3/2006	CNV		
T115	577	8/3/2006	CNV		
T115	578	8/3/2006	V	CB	
T115	579	8/3/2006	V	CB	
T115	579A	8/3/2006	V	TRENCH DRAIN	TRENCH DRAIN, RUNS THE LENGTH OF THE
T115	579B	8/3/2006	V	MH	CB LID ON MH, TIES INTO TRENCH DRAIN.
T115	580	8/3/2006	V	CB	
T115	581	8/3/2006	CNV		
T115	582	8/3/2006	V	CB	
T115	583	8/3/2006	V	CB	
T115	584	8/3/2006	V	CB	
T115	585	8/3/2006	V	CB	
T115	586	8/3/2006	VNT		
T115	587	8/3/2006	V	CB	FILTER SOCK
T115	588	8/3/2006	CNV		
T115	589	8/3/2006	V	CB	
T115	590	8/3/2006	V	CB	
T115	591	8/3/2006	V	SEWER	
T115	592	8/3/2006	VNT		
T115	593	8/3/2006	V	CB	
T115	594	8/3/2006	V	CB	
T115	595	8/3/2006	N/A		
T115	596	8/3/2006	V	SEWER	
T115	597	8/3/2006	V	CB	
T115	598	8/3/2006	V	CB	
T115	599	8/3/2006	V	CB	
T115	600	8/3/2006	V	SEWER	

Site	ID_Numbe	Date	Status	Structure	Comments
T115	601	8/3/2006	VNT		
T115	602	8/3/2006	V	CB	FILTER SOCK
T115	603	8/3/2006	V	CB	
T115	604	8/3/2006	CNV		
T115	605	8/3/2006	V	SEWER	
T115	606	8/3/2006	V	SEWER	
T115	607	8/3/2006	V	CB	
T115	608	8/3/2006	V	CB	
T115	609	8/3/2006	V	CB	FILTER SOCK
T115	610	8/3/2006	V	CB	
T115	611	8/3/2006	V	CB	
T115	612	8/3/2006	CNV		
T115	613	8/3/2006	V	CB	
T115	614	8/3/2006	CNV		
T115	615	8/3/2006	V	CB	FILTER SOCK
T115	616	8/3/2006	V	SEWER	
T115	617	8/3/2006	V	CB	
T115	618	8/3/2006	V	CB	
T115	619	8/3/2006	CNV		
T115	620	8/3/2006	V	CB	FILTER SOCK
T115	621	8/3/2006	V	CB	
T115	622	8/3/2006	V	CB	
T115	623	8/3/2006	V	CB	
T115	624	8/3/2006	V	CB	
T115	625	8/3/2006	V	CB	FILTER SOCK
T115	626	8/3/2006	CNV		
T115	627	8/3/2006	CNV		

Site	ID Number	Date	Status	Structure	Comments
T115	628	8/3/2006	V	CB	FILTER SOCK
T115	629	8/3/2006	V	CB	
T115	630	8/3/2006	CNV		
T115	631	8/3/2006	V	CB	FILTER SOCK
T115	631A	8/3/2006	V	SEWER	MANHOLE.
T115	632	8/3/2006	V	MH	CB LID OVER MH
T115	633	8/3/2006	V	CB	
T115	634	8/3/2006	V	CB	
T115	635	8/3/2006	N/A		
T115	636	8/3/2006	CNV		
T115	637	8/3/2006	V	MH	
T115	637A	8/3/2006	V	TRENCH DRAIN	
T115	638	8/3/2006	V	CB	UNDER CAR
T115	639	8/3/2006	V	SEWER	
T115	640	8/3/2006	CNV		
T115	641	8/3/2006	V	CB	
T115	642	8/3/2006	V	CB	UNDER PALLETS
T115	643	8/3/2006	V	CB	FILTER SOCK
T115	644	8/3/2006	V	SEWER	
T115	645	8/3/2006	V	CB	UNDER TRAILER
T115	646	8/3/2006	V	CB	
T115	647	8/3/2006	V	CB	
T115	648	8/3/2006	V	CB	SUMP PUMP
T115	649	8/3/2006	V	CB	
T115	650	8/3/2006	CNV		
T115	651	8/3/2006	V	CB	
T115	652	8/3/2006	V	MH	

Site	ID Numbe	Date	Status	Structure	Comments
T115	653	8/3/2006	CNV		
T115	654	8/3/2006	V	CB	
T115	654A	8/3/2006	V	TRENCH DRAIN	
T115	655	8/3/2006	V	CB	
T115	656	8/3/2006	V	CB	UNDER CAR
T115	657	8/3/2006	CNV		
T115	658	8/3/2006	V	SEWER	
T115	659	8/3/2006	V	CB	
T115	660	8/3/2006	V	CB	
T115	661	8/3/2006	V	CB	FILTER SOCK
T115	662	8/3/2006	V	SEWER	
T115	663	8/3/2006	V	SEWER	
T115	663A	8/3/2006	V	MH	COULD BE SEWER. FULL OF WATER.
T115	664	8/3/2006	V	CB	
T115	665	8/3/2006	V	CB	
T115	666	8/3/2006	V	CB	
T115	667	8/3/2006	V	CB	
T115	668	8/3/2006	V	CB	
T115	669	8/3/2006	V	MH	
T115	670	8/3/2006	CNV		
T115	671	8/3/2006	V	CB	
T115	672	8/3/2006	V	SEWER	
T115	673	8/3/2006	V	CB	
T115	674	8/3/2006	V	CB	
T115	675	8/3/2006	V	SEWER	
T115	676	8/3/2006	V	CB	
T115	677	8/3/2006	CNV		

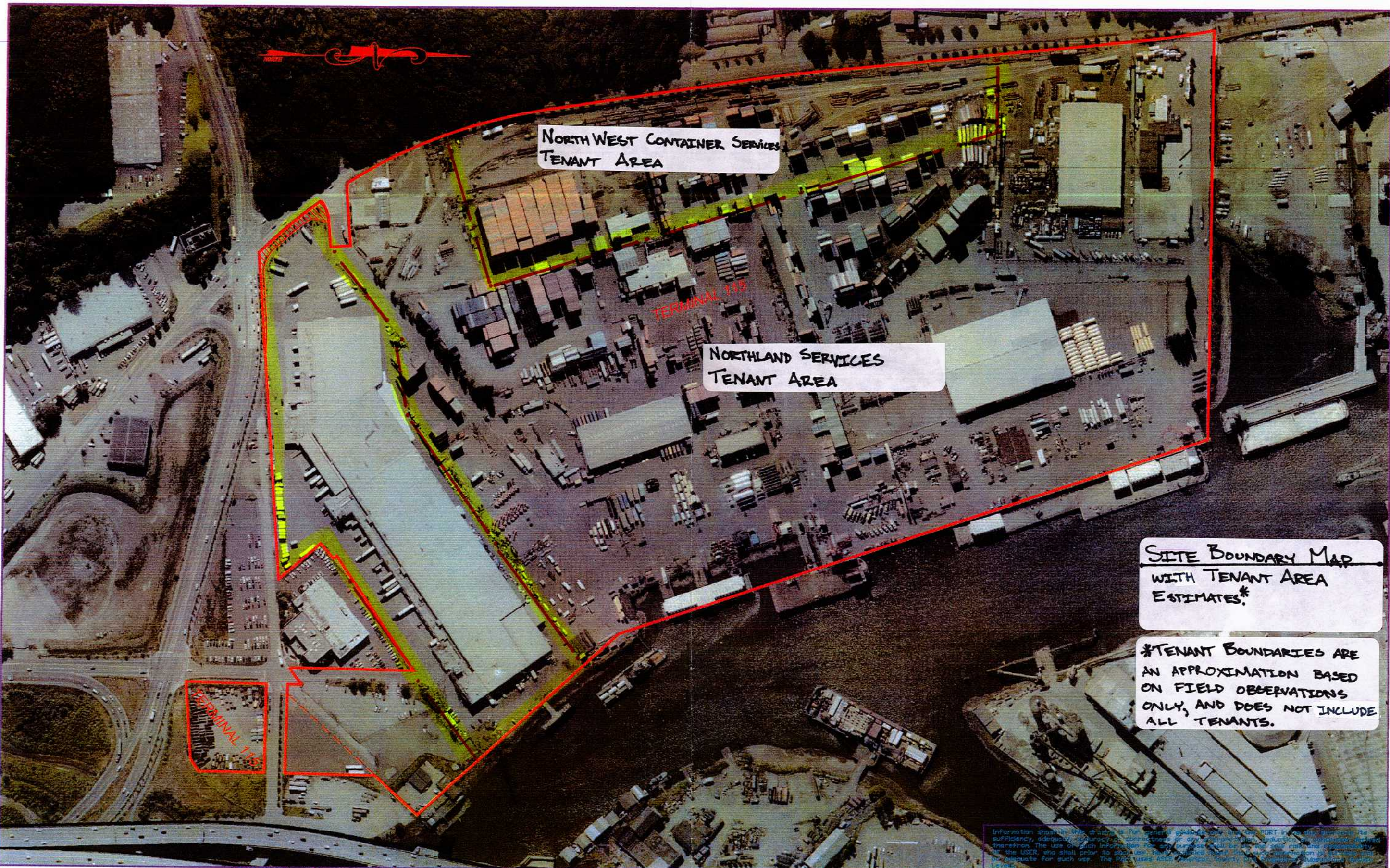
Site	ID_Numbe	Date	Status	Structure	Comments
T115	678	8/3/2006	V	CB	FILTER SOCK
T115	679	8/3/2006	V	MH	
T115	680	8/3/2006	V	MH	
T115	681	8/3/2006	N/A		
T115	682	8/3/2006	V	MH	
T115	683	8/3/2006	V	CB	
T115	684	8/3/2006	V	CB	
T115	685	8/3/2006	V	SEWER	
T115	686	8/3/2006	CNV		
T115	687	8/3/2006	V	CB	
T115	688	8/3/2006	V	CB	
T115	689	8/3/2006	V	CB	
T115	690	8/3/2006	V	CB	FILTER BOX
T115	691	8/3/2006	N/A		
T115	692	8/3/2006	V	SEWER	
T115	693	8/3/2006	V	MH	
T115	694	8/3/2006	V	SEWER	
T115	695	8/3/2006	V	CB	FILTER SOCK
T115	696	8/3/2006	V	CB	
T115	697	8/3/2006	V	CB	
T115	698	8/3/2006	V	CB	
T115	699	8/3/2006	V	SEWER	
T115	700	8/3/2006	V	CB	
T115	701	8/3/2006	V	CB	
T115	702	8/3/2006	V	CB	
T115	703	8/3/2006	V	CB	
T115	704	8/3/2006	V	MH	

Site	ID_Numbe	Date	Status	Structure	Comments
T115	705	8/3/2006	V	CB	
T115	706	8/3/2006	V	CB	
T115	707	8/3/2006	V	CB	
T115	708	8/3/2006	V	CB	
T115	709	8/3/2006	V	SEWER	
T115	710	8/3/2006	V	CB	
T115	711	8/3/2006	V	CB	
T115	712	8/3/2006	V	CB	
T115	713	8/3/2006	V	CB	
T115	714	8/3/2006	V	CB	
T115	715	8/3/2006	V	CB	
T115	716	8/3/2006	V	CB	
T115	717	8/3/2006	V	CB	
T115	718	8/3/2006	V	CB	
T115	719	8/3/2006	V	CB	
T115	720	8/3/2006	V	CB	
T115	721	8/3/2006	V	CB	
T115	722	8/3/2006	V	CB	
T115	723	8/3/2006	V	CB	UNDER TRUCKK
T115	724	8/3/2006	V	CB	
T115	725	8/3/2006	V	CB	
T115	726	8/3/2006	V	CB	
T115	727	8/3/2006	V	CB	
T115	728	8/3/2006	V	MH	CANNOT OPEN
T115	729	8/3/2006	V	MH	SQUARE LID
T115	730	8/3/2006	V	CB	
T115	730A	8/3/2006	V	CB	SEDIMENT TRAP OUTLET TO THE SW.

Site	ID_Numbe	Date	Status	Structure	Comments
T115	730B		V	CB	INLET FROM THE SE. SEDIMENT TRAP
T115	731	8/3/2006	V	CB	SIGNIFICANT AMOUNTS OF
T115	732	8/3/2006	V	MH	TOO LARGE TO SEE ANY INLETS OR
T115	733	8/3/2006	V	CB	
T115	734	8/3/2006	V	CB	
T115	735	8/3/2006	V	MH	
T115	736	8/3/2006	V	CB	
T115	737	8/3/2006	V	SEWER	
T115	738	8/3/2006	V	CB	SIGNIFICANT AMOUNTS OF
T115	739	8/3/2006	VNT		
T115	740	8/3/2006	V	MH	WATER LINE ABOVE ANY POSSIBLE PIPES
T115	741	8/3/2006	V	CB	UNDER TRUCK
T115	741A	8/3/2006	V	CB	ONE OUTLET TO THE SE.
T115	741B	8/3/2006	V	CB	OUTLET PIPE TO THE SE.
T115	742	8/3/2006	V	CB	
T115	743	8/3/2006	V	SEWER	
T115	744	8/3/2006	V	CB	
T115	744A	8/3/2006	V	CB	2 INLETS ON THE SW SIDE. 12" PIPE ON THE
T115	745	8/3/2006	V	CB	SIGNIFICANT AMOUNTS OF
T115	746	8/3/2006	N/A		
T115	747	8/3/2006	V	CB	
T115	748	8/3/2006	CNV		
T115	749	8/3/2006	V	CB	
T115	749A	8/3/2006	V	CB	INLET FROM NE. SEDIMENT TRAP
T115	749B	8/3/2006	V	CB	INSIDE LOCKED AREA, VISIBLE FROM THE
T115	750	8/3/2006	N/A		
T115	751	8/3/2006	N/A		

Site	ID_Numbe	Date	Status	Structure	Comments
T115	752	8/3/2006	V	CB	
T115	753	8/3/2006	V	SEWER	
T115	754	8/3/2006	N/A		
T115	755	8/3/2006	V	SEWER	
T115	756	8/3/2006	V	MH	NO PIPES ABOVE WATER LINE
T115	757	8/3/2006	V	CB	
T115	758	8/3/2006	V	SEWER	
T115	759	8/3/2006	V	CB	
T115	760	8/3/2006	V	CB	
T115	760A	8/3/2006	V	CB	INSIDE LOCKED AREA, VISIBLE FROM THE
T115	760B	8/3/2006	V	CB	INSIDE LOCKED AREA, VISIBLE FROM THE
T115	761	8/3/2006	V	SEWER	CLEANOUT
T115	762	8/3/2006	V	SEWER	
T115	763	8/3/2006	V	MH	
T115	764	8/3/2006	V	SEWER	
T115	765	8/3/2006	V	SEWER	CLEANOUT
T115	766	8/3/2006	V	CB	
T115	766A	8/3/2006	V	CB	SEDIMENT TRAP OUTLET TO THE SW.
T115	767	8/3/2006	V	CB	
T115	768	8/3/2006	V	SEWER	CLEANOUT
T115	769	8/3/2006	V	CB	
T115	770	8/3/2006	V	CB	
T115	771	8/3/2006	V	SEWER	CLEANOUT
T115	772	8/3/2006	V	CB	
T115	773	8/3/2006	V	CB	
T115	774	8/3/2006	V	MH	SQUARE LID
T115	775	8/3/2006	V	CB	

Site	ID Numbe	Date	Status	Structure	Comments
T115	776	8/3/2006	V	CB	
T115	777	8/3/2006	V	CB	
T115	778	8/3/2006	V	CB	
T115	779	8/3/2006	V	CB	
T115	780	8/3/2006	V	CB	
T115	781	8/3/2006	V	MH	CANNOT OPEN
T115	782	8/3/2006	V	SEWER	CLEANOUT
T115	783	8/3/2006	V	CB	
T115	784	8/3/2006	V	MH	TOO LARGE TO SEE ANY INLETS OR
T115	785	8/3/2006	V	SEWER	CLEANOUT
T115	786	8/3/2006	V	SEWER	CLEANOUT
T115	787	8/3/2006	V	MH	LID MARKED WATER
T115	788	8/3/2006	V	MH	SQUARE LID, CANNOT OPEN



NORTH WEST CONTAINER SERVICES
TENANT AREA

NORTHLAND SERVICES
TENANT AREA

SITE BOUNDARY MAP
WITH TENANT AREA
ESTIMATES.*

*TENANT BOUNDARIES ARE
AN APPROXIMATION BASED
ON FIELD OBSERVATIONS
ONLY, AND DOES NOT INCLUDE
ALL TENANTS.

Information shown on this map is for general informational purposes only and does not constitute a warranty, express or implied, for any use other than that intended. The user of this information is responsible for its accuracy and shall assume all liability for its use. The Port of Seattle does not assume any liability for the use of this information. The Port of Seattle is not responsible for any damage or loss resulting from the use of this information. The Port of Seattle is not responsible for any damage or loss resulting from the use of this information.

CALL 48 HOURS
BEFORE YOU DIG
1-800-424-5555

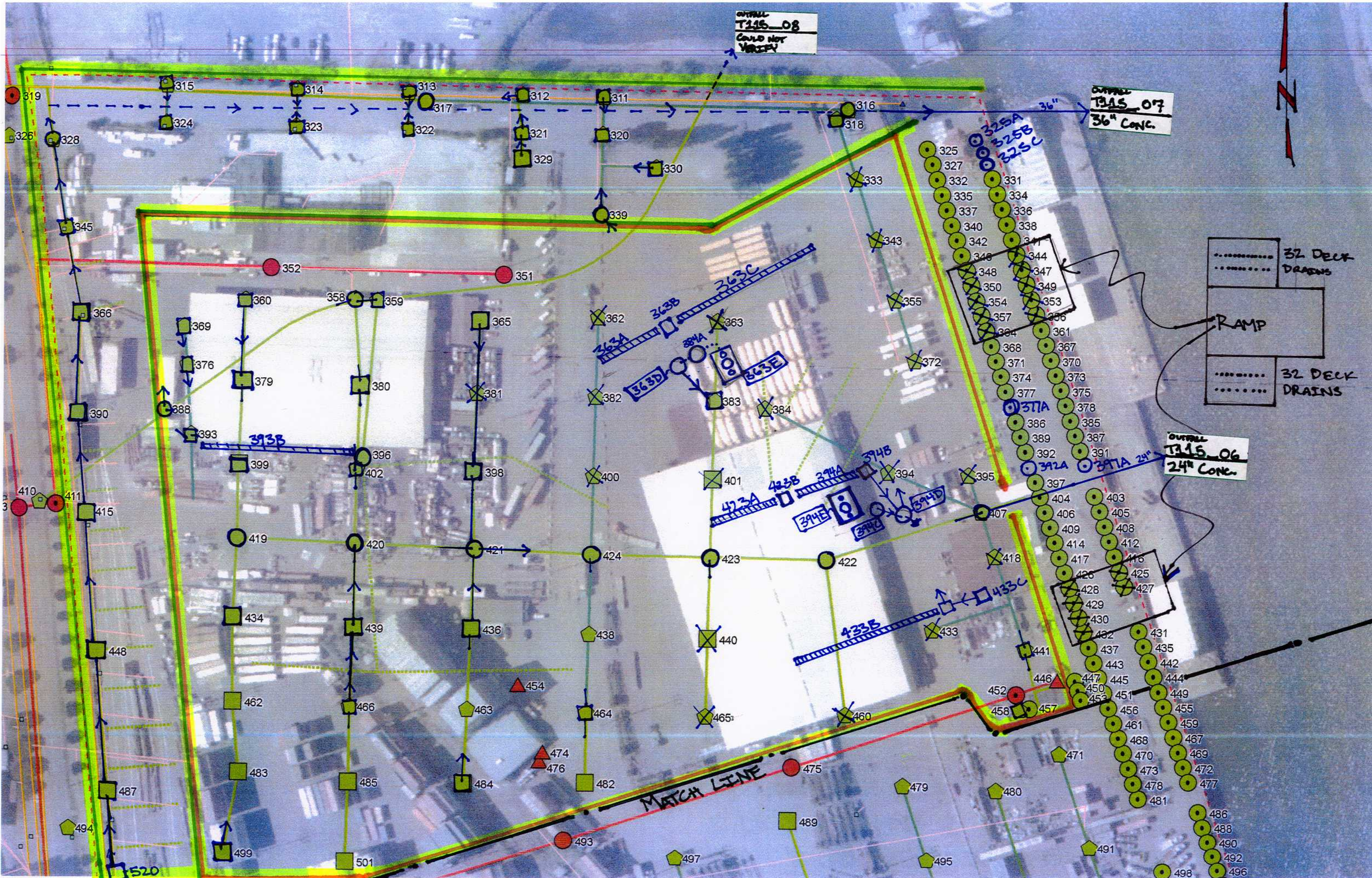
PROJECT ENR/MON		REVISIONS							
NO.	DATE	BY	DESCRIPTION	APP'D	NO.	DATE	BY	DESCRIPTION	APP'D

PROGRAM MANAGER:
W. T. WHITE
DESIGN ENGINEER:
GARRY ENSLEY
CHECKED BY:
BRADEN MONSON
SCALE:
AS SHOWN
DATE:
7/20/2004
CHECKED BY:

Port of Seattle
SEAPORT FACILITIES
PROJECT: TERMINAL 115
SHEET TITLE: BOUNDARY

WORK ORDER NO.
000000
CONSULTANT'S NO.

PORT OF SEATTLE NO.
2



OUTFALL
T115_08
COULD NOT
VERIFY

OUTFALL
T115_07
36" CONC.

OUTFALL
T115_06
24" CONC.

32 DECK
DRAINS

RAMP

32 DECK
DRAINS

MATCH LINE

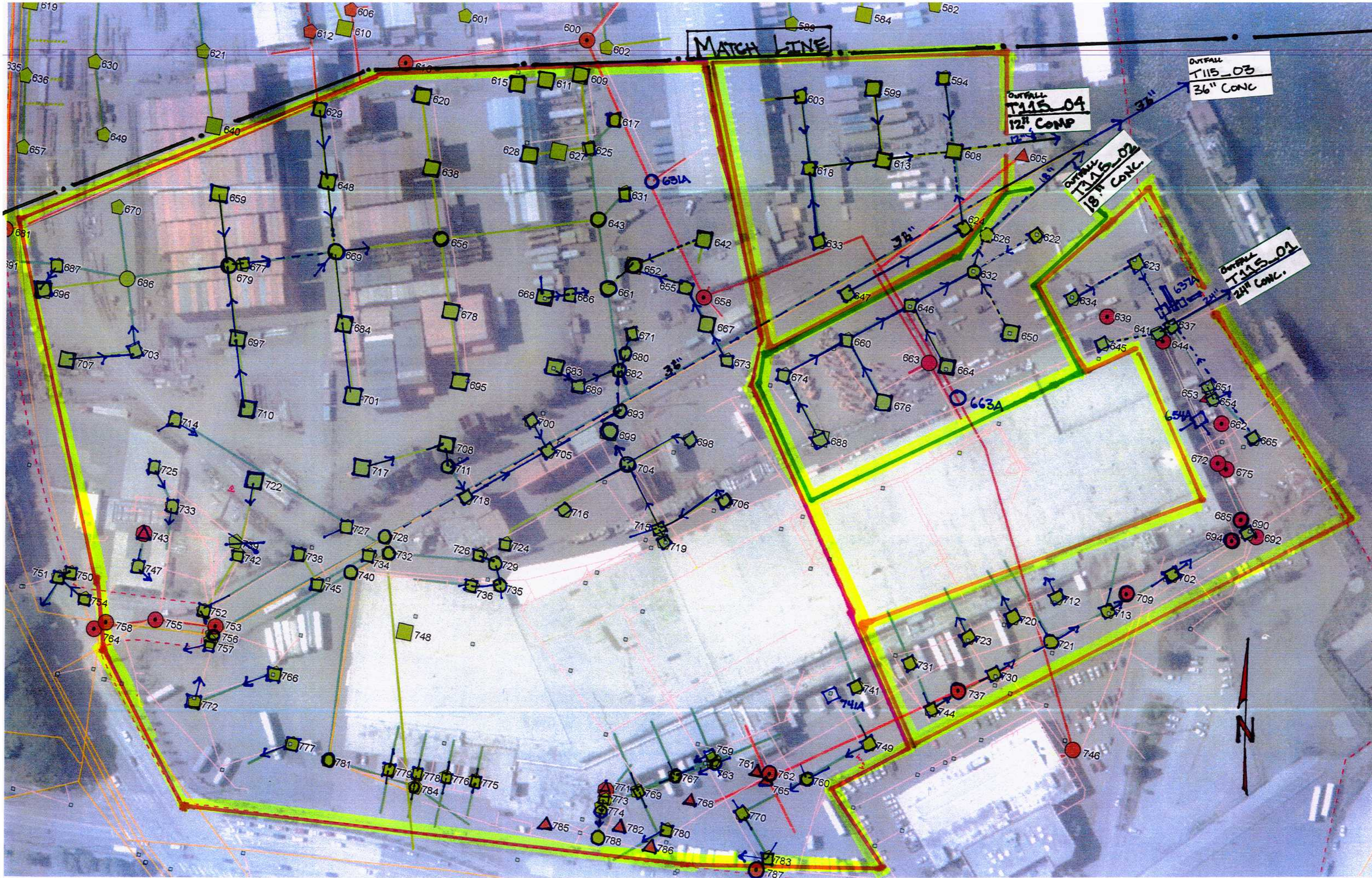




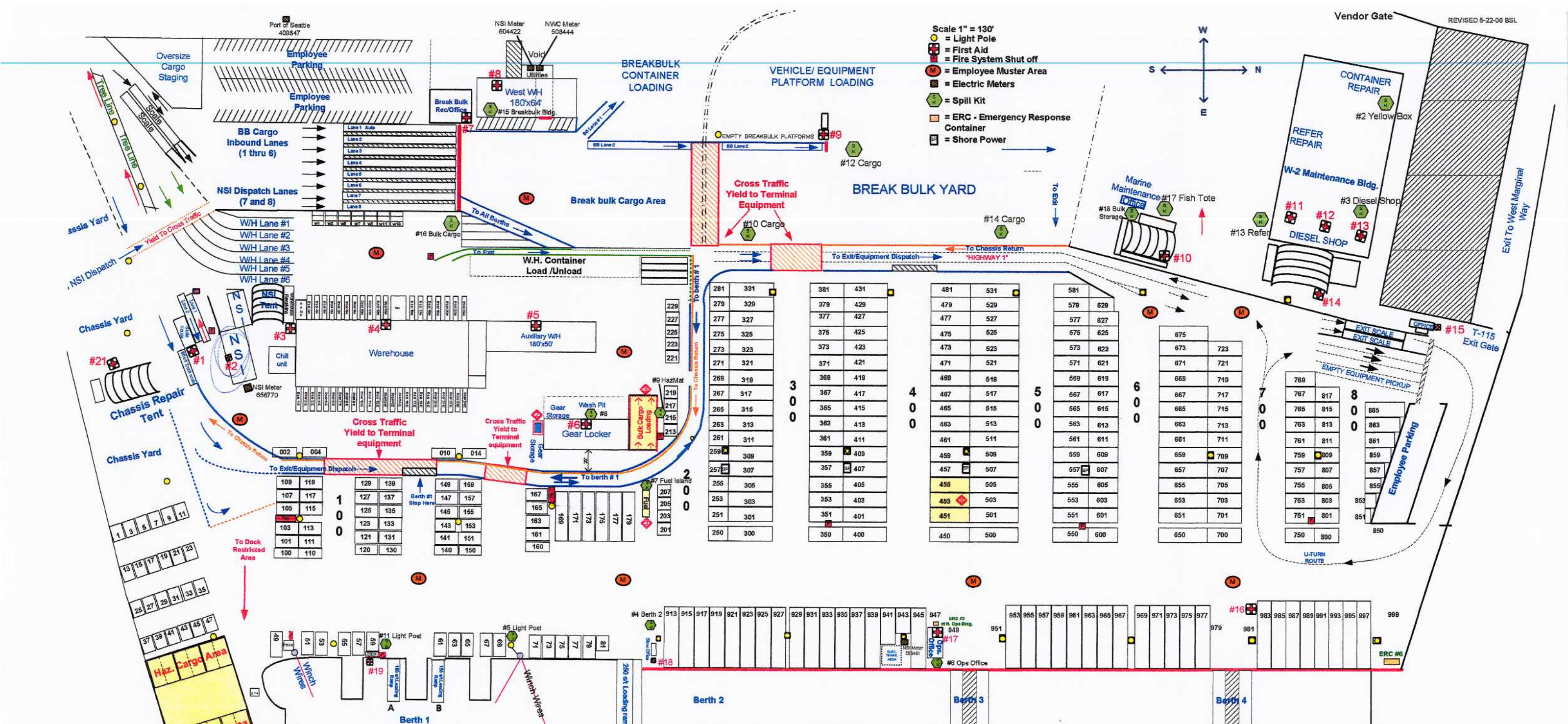
MATCH LINE

MATCH LINE

OUTLET
T115_05
30" CONC.



T	Commercial Fence Corp.	Terminal 115	Property Management	78547	12 Months	1	USE: Operating a fence construction company.	1799		Y	Municipal						
T	Northland Terminal Services, Inc.	Terminal 115	Property Management	78552	12 Months	3	USE: Marine terminal operations and related activities.	6719	551112	SO3000471D	Gen SW	20-Sep-07	MICHAEL LUESKOW	6700 W. MARGINAL WAY S.W.	Seattle, WA	(206) 892-2788	
T	Polar Supply Co., Inc.	Terminal 115	Property Management	78421	12 Months	2	USE: Manufacturing, storage & distribution of concrete.			?	Subtenants						
C	Port of Seattle	Terminal 115		NA			CONSTRUCTION Pavement Replacement Project			Y	Constr.						
C	Port of Seattle	Terminal 115		NA			CONSTRUCTION: Pavement Replacement Project (DMR reporting - impaired water: pH)			SO3006386A	Constr	16-Dec-10	MARILYN GUTHRIE	6720-6730 W MARGINAL WAY SW	Seattle, WA	(206) 728-3347	
C	Port of Seattle	Terminal 115		NA			CONSTRUCTION: Pier barge loading and test piling (PENDING)			?	Constr.						
T	Sea Pac Transport Services, LLC	Terminal 115	Property Management	78015	12 Months	2	USE: Storage of construction materials and equipment.	493110; 4225 531130		Y	Industrial						
T	Seafreeze Limited Partnership	Terminal 115	Property Management	22479	60 Months	2	USE: Processing and storage of refrigerated/frozen commodities.	2092	311712	Y	Industrial						
T	Shultz Distributing, Inc.	Terminal 115	Property Management	2846	60 Months	2	USE: Automated commercial vehicle fueling facility.	424710; 454311;			SO3002346D	Gen SW	20-Sep-07	HAL TIFFANY	6851 E MARGINAL WAY S	Seattle, WA	(206) 682-8427
T	U.S. Coast Guard T115	Terminal 115	Property Management	78511		0 0	USE: Monitor Duwamish Waterway with remote cameras mounted on an electronics box on a utility pole owned by Licensor.				N						
T	Waste Management of Washington, Inc.	Terminal 115	Property Management	78502		0 1	USE: Container storage.	4953; 1623; 7389; 1629; 9999	236210; 237110; 237120; 237130; 237990; 238910	Y	Municipal						



* All Trucks/Vehicles must remain in designated lanes until you reach your assigned location (Truck lanes are designated by painted white lines on ground)
 * Terminal operators monitor CB channel #2
 * Muster Areas must be away from containers
 * N.W.C. water meter #41339073 (water/sewer bill?)

Spill Kit Locations:
 #1 Fox Ave.
 #2 Yellow Box W-2 Bldg.
 #3 Diesel Shop W-2 Bldg.
 #4 Berth 2
 #5 Light Post Berth 1
 #6 North Ops Bldg.
 #7 Fuel Island
 #8 Wash Kit
 #9 HazMat
 #10 Cargo
 #11 Berth 1
 #12 Cargo
 #13 Refer Shop
 #14 Cargo
 #15 BB Bldg. - W. Whse.
 #16 Bulk Cargo
 #17 Fish Tote - MM
 #18 Bulk Storage - MM

Following are located at Fox Avenue:
 #4 ERC - Emergency Response Container
 #1 Spill Kit
 Contact for Spill Kits & ERC:
 Don Cairney - Global Diving & Salvage
 Phone (206) 963 0995