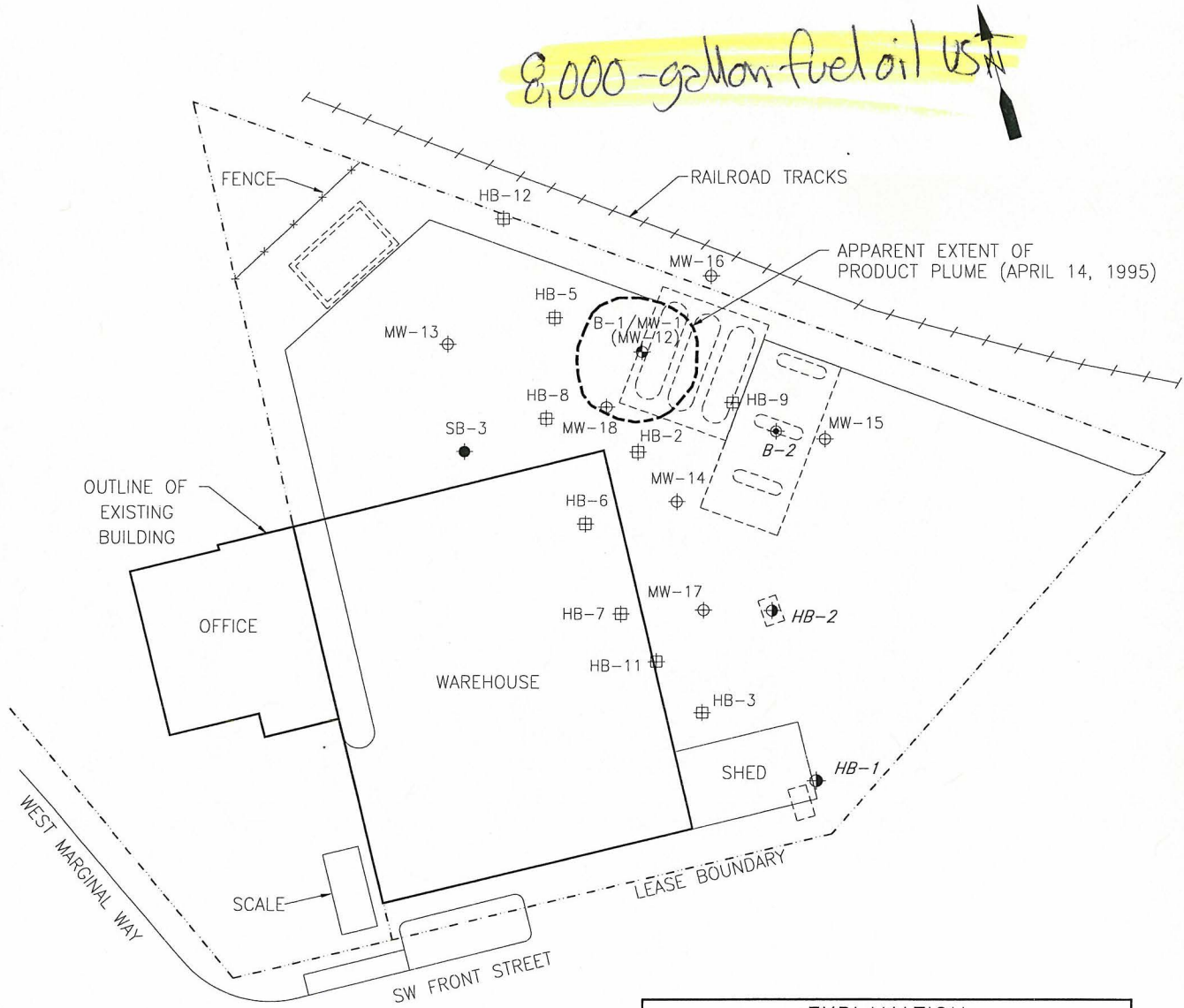


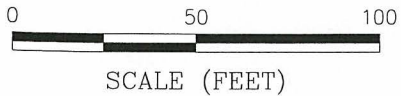
Foley Cardlock Facility

8,000-gallon fuel oil UST




EXPLANATION

- B-1/MW-1 (MW-12) ⊕ BORING/MONITORING WELL BY AGRA (1994). (RENAMED MW-12 BY THE PORT OF SEATTLE)
- B-2 ⊕ SOIL BORING BY AGRA (1994)
- HB-1 ⊕ HAND BORING BY AGRA (1994)
- MW-13 ⊕ SOIL BORING/MONITORING WELL
- HA-5 ⊕ HAND AUGER BORING
- SB-3 ⊕ SOIL BORING



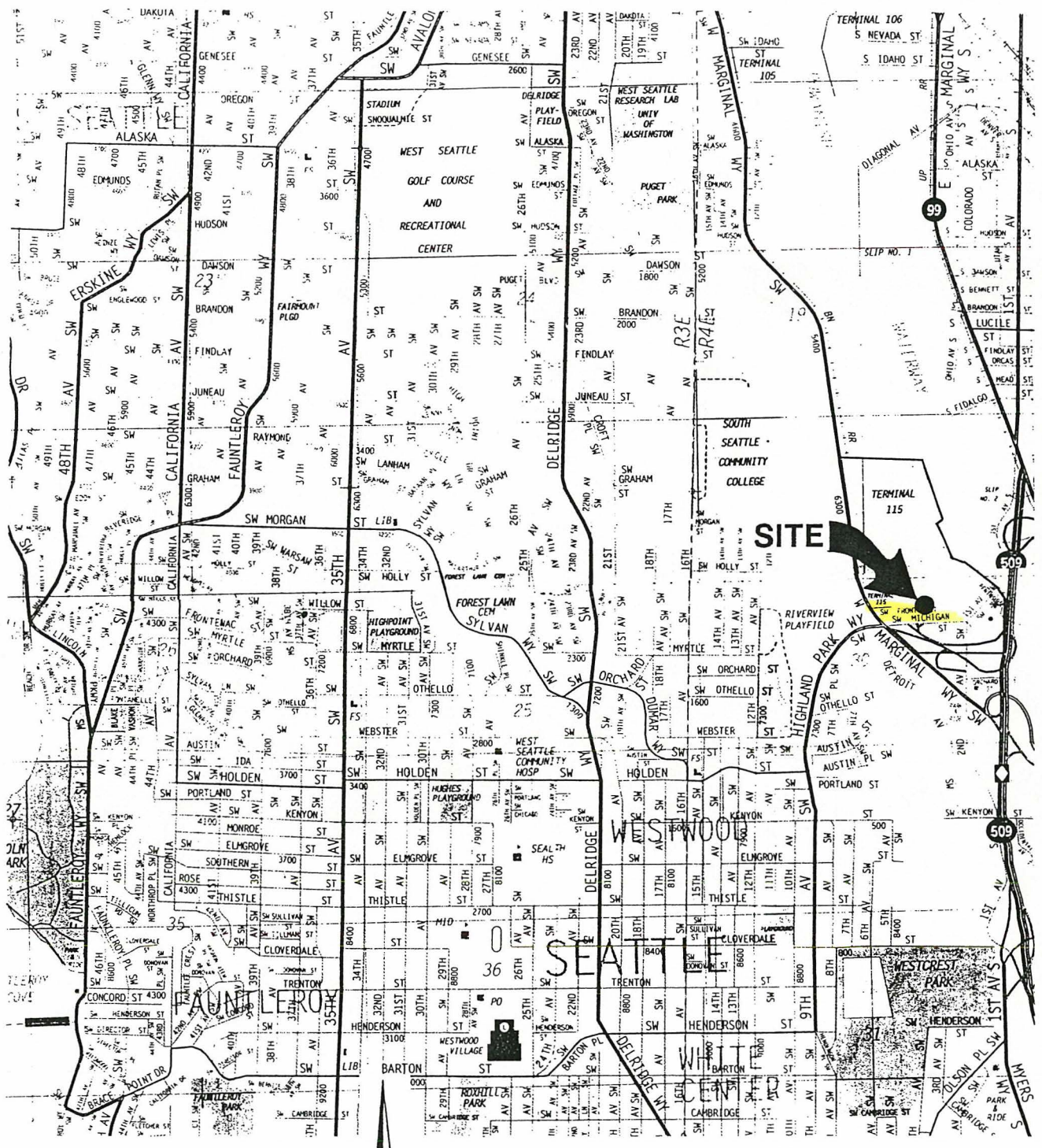
BASE MAP FROM AGRA 1994

DWG:FOLEY-C REV:950604.2057 DSK:00001007 TID:0.641816

 **GeoScience Management, Inc.**
Environmental Consulting Services
 18608 89th Avenue NE
 Bothell, Washington 98011

W.O. _____
 DESIGN _____
 DRAWN PJM, HWS
 DATE 04/95
 SCALE 50'-1" A SIZE

FIGURE 5
 PORT OF SEATTLE – TERMINAL 115
 PROPOSED FOLEY CARDLOCK FACILITY
 SEATTLE, WASHINGTON
 APPARENT EXTENT OF PRODUCT PLUME



WASHINGTON

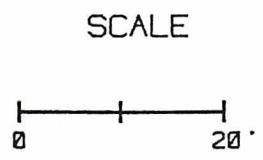
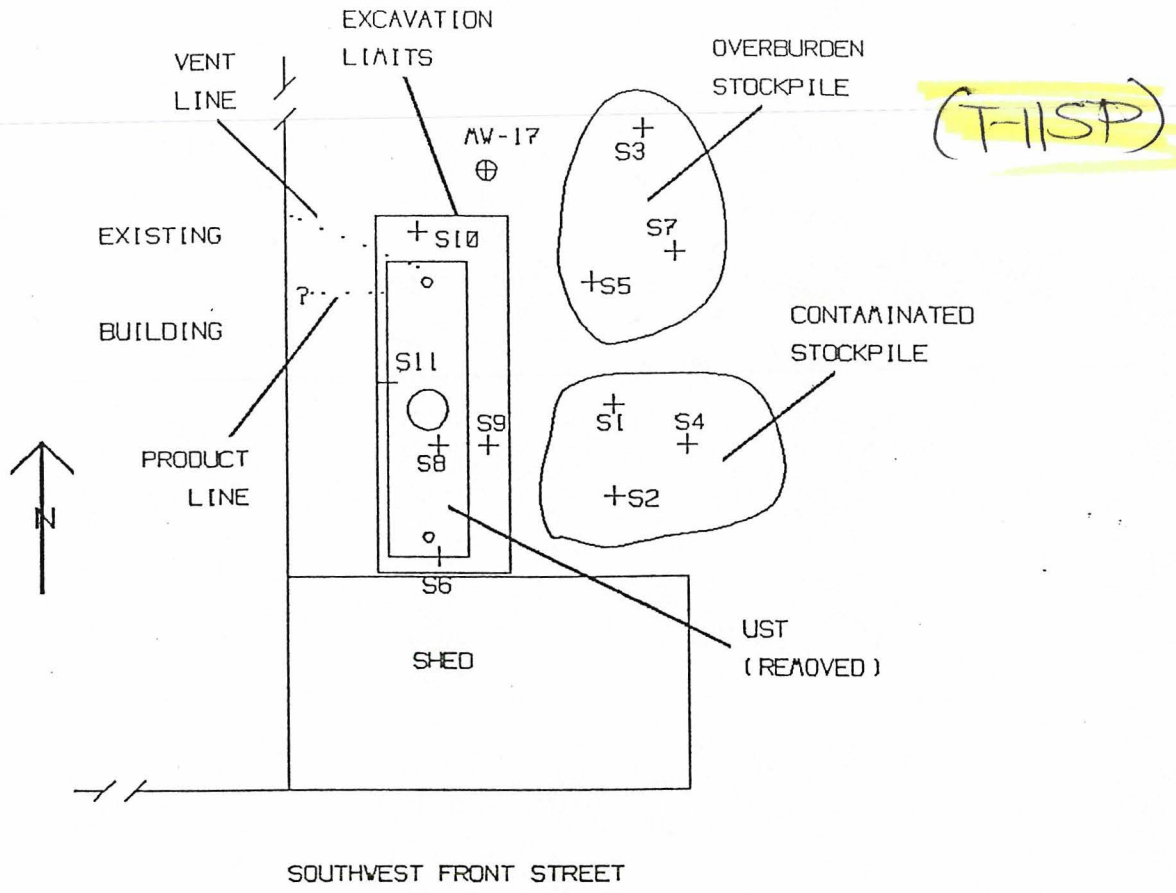
Reproduced with permission granted by THOMAS BROS. MAPS. This map is copyrighted by THOMAS BROS. MAPS. It is unlawful to copy or reproduce all or any part thereof, whether for personal use or resale, without permission.



EMCON
Northwest, Inc.

DATE 5-94
DWN. MLP
APPR. _____
REVIS. _____
PROJECT NO. 0357-013.01

Figure 2-1
PORT OF SEATTLE
TERMINAL 115
SEATTLE, WASHINGTON
SITE LOCATION MAP



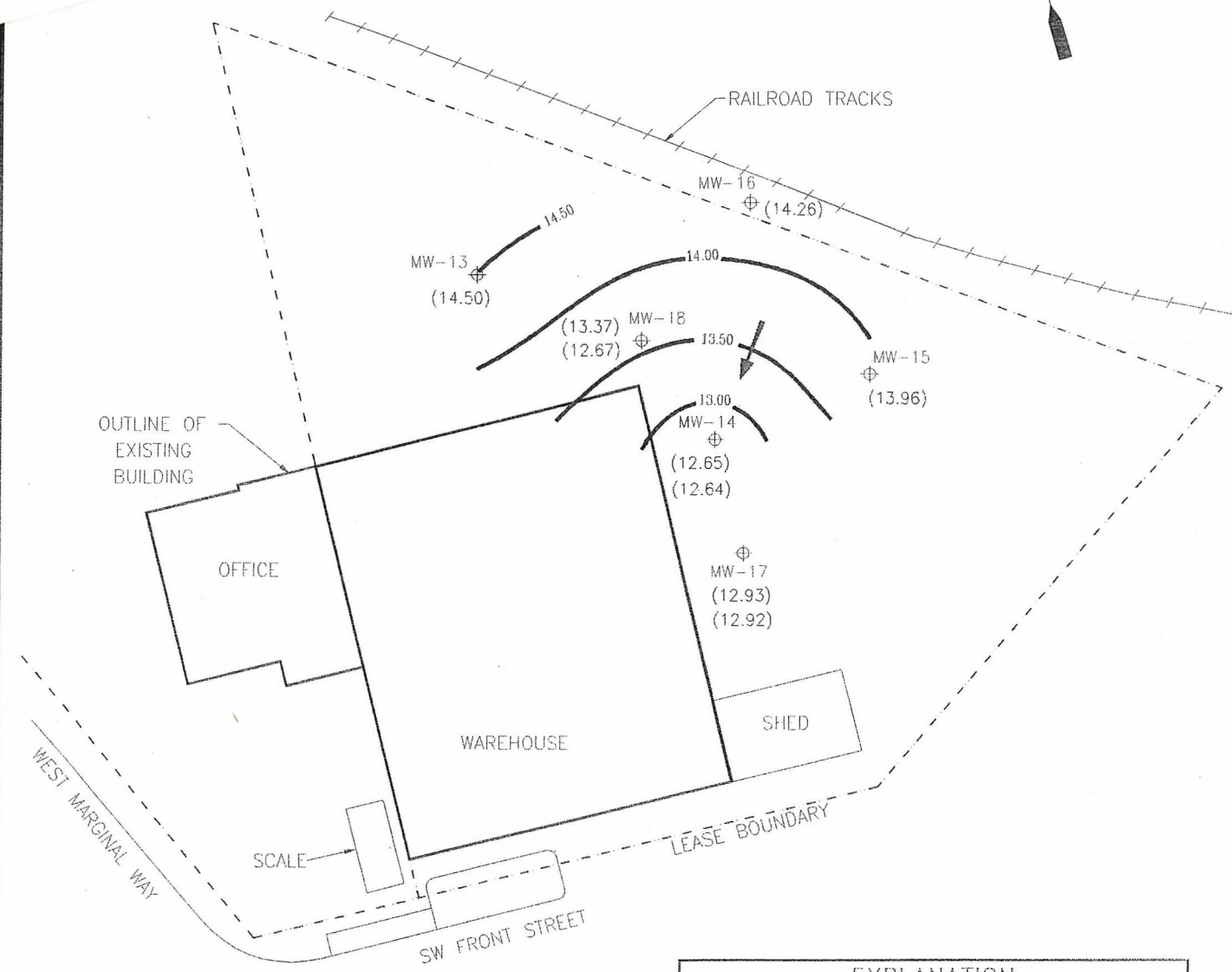
KEY

SI	SAMPLE
+	LOCATION
MV-17	MONITORING
⊕	WELL

Note: Samples S1 and S4 were collected but not analyzed.

<p>SITE PLAN Terminal 115 Seattle, Washington</p>	<p>Columbia Environmental Inc. Project Number 95584 September 1995</p>
--	--

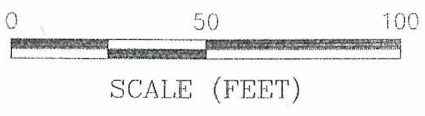




WEST MARGINAL WAY

LEASE BOUNDARY

SW FRONT STREET



EXPLANATION	
	WATER LEVEL ELEVATION CONTOURS AND FLOW DIRECTION. DATA WERE KRIGED AND SMOOTHED USING GOLDEN SOFTWARE.
MW-13	SOIL BORING/WELL BY GSM (1995)
(12.91)	PRODUCT ELEVATION (IN FEET)
(12.92)	GROUNDWATER ELEVATION (IN FEET)
NOTE: MW-18 DATA NOT USED IN CONTOURING	

D:\PROJECTS\115\115-05666-2\07_RSS_000047_T10-6641016

GeoScience Management, Inc.
Environmental Consulting Services
 18608 89th Avenue NE
 Bothell, Washington 98011

W.O. _____
 DESIGN _____
 DRAWN PJM, HWS
 DATE 04/95
 SCALE 50'-1" A SIZE

FIGURE 2
 PORT OF SEATTLE - TERMINAL 115
 PROPOSED FOLEY CARDLOCK FACILITY
 SEATTLE, WASHINGTON
 WATER LEVEL ELEVATIONS, MARCH 28, 1996

Table 1
Field Parameters and Groundwater Sampling Results
June 25, 1996 Sampling Event
Port of Seattle Terminal 115 Project

Monitoring Well Identification	Sample Identification	Date Measured	Depth to Product/Water (in feet btoc)	Product Thickness (feet)	Groundwater Elevation ^A	Pore Volume (Gallons)	Gallons Purged	pH	Specific Conductance (microsiemens per centimeter)	Temperature (° F)	TPH-D ^B (mg/L)	TPH-Oil ^C (mg/L)
MW-12	MW-12	14-Apr-95	7.65/8.00	0.35	12.13(P)/11.78	N/A	N/A	NM	NM	NM	N/A	N/A
MW-12 ^D	Not Sampled	31-Jul-95	9.77/9.85	0.08	10.01(P)/9.93	N/A	N/A	N/A	N/A	NM	N/A	N/A
Abandoned July 31, 1995		--	--	--	--	--	--	--	--	NM	--	--
MW-13	MW-13	14-Apr-95	--/4.68	--	15.03	1.5	5.4	NM	NM	NM	0.31	N/A
MW-13	95-0902-05	2-Aug-95	--/7.89	--	11.82	1.2	3.6	7.07	1,210	NM	0.62	0.82
MW-13	120195-01	1-Dec-95	--/3.55	--	16.16	1.7	5.4	7.01	1,020	55	1.5	1.1
MW-13	96-0328-01	28-Mar-96	--/5.21	--	14.50	1.4	4.4	7.36	628	55.5	0.29	<0.75
MW-13	96-0625-01	25-Jun-96	--/5.92	--	13.79	1.1	3.5	NM	NM	NM	0.33	N/A
MW-14	MW-14	14-Apr-95	6.64	--	12.94	1.3	3.9	NM	NM	NM	5.4 ^E	N/A
MW-14	95-0902-01	2-Aug-95	(Trace Sheen)/8.1	--	11.44	1.2	4.8	7.25	51,400	NM	180	4.5
Duplicate MW-14	95-0902-06	2-Aug-95	(Trace Sheen)/8.1	--	11.44	1.2	4.8	7.3	51,400	NM	110	3.8
MW-14	120195-02	1-Dec-95	(Trace Sheen)/5.5	--	14.06	1.4	4.5	7.92	>20,000	55	91	(Diluted Out)
Duplicate MW-14	120195-03	1-Dec-95	(Trace Sheen)/5.5	--	14.06	1.4	4.5	7.92	>20,000	55	92	(Diluted Out)
MW-14	96-0328-02	28-Mar-96	6.93/6.94	0.01	12.65(P)/12.64	1.2	3.8	7.85	>30,000	59	40	0.88
Duplicate MW-14	96-0328-02	28-Mar-96	6.93/6.94	0.01	12.65(P)/12.64	1.2	3.8	7.85	>30,000	59	40	0.91
MW-14	96-0625-06	25-Jun-96	7.23/7.29	0.06	12.35(P)/12.29	1.1	3.5	NM	NM	NM	38.9	N/A
MW-15	MW-15	14-Apr-95	4.79	--	14.74	1.6	4.2	NM	NM	NM	1.3 ^{EF}	N/A
MW-15	95-0902-03	2-Aug-95	Trace Sheen?)/7.1	--	12.42	1.4	4.2	9.09	2,700	NM	1.1	1.5
MW-15	120195-04	1-Dec-95	--/3.74	--	15.79	1.7	5.7	9.29	>2,000 (?)	58	1.5	1.4
MW-15	96-0328-04	28-Mar-96	--/5.57	--	13.96	1.4	4.5	9.26	32,800	55.3	0.98	0.75
MW-15	96-0625-04	25-Jun-96	6.03	--	13.5	1.1	3.5	NM	NM	NM	1.03	N/A
Duplicate MW-15	96-0625-03	25-Jun-96	6.03	--	13.5	1.1	3.5	NM	NM	NM	0.984	N/A
MW-16	MW-16	14-Apr-95	5.74	--	15.06	1.8		NM	NM	NM	1.7 ^{EF}	N/A
MW-16	95-0902-04	2-Aug-95	--/7.88	--	12.92	1.2	3.6	8.79	1,100	NM	0.46	<0.75
MW-16	120195-05	1-Dec-95	--/4.64	--	16.16	1.5	5.1	9.25	890	56.5	0.54	<0.75
MW-16	96-0328-05	28-Mar-96	--/6.54	--	14.26	1.2	3.8	9.48	8,060	55.3	0.3	<0.75
MW-16	96-0625-02	25-Jun-96	7.06	--	13.74	1	3.2	NM	NM	NM	0.311	N/A
MW-17	MW-17	14-Apr-95	6.98	--	12.83	1.2		NM	NM	NM	0.57 ^E	NM
MW-17	95-0902-02	2-Aug-95	--/9.17	--	10.64	0.8	3.2	6.71	950	NM	0.68	1.6
MW-17	120195-06	1-Dec-95	(Trace Sheen)/6.5	--	13.31	1.2	3.6	6.75	631	57	0.42	1.6
MW-17	96-0328-06	28-Mar-96	6.88/6.89	0.01	12.93(P)/12.92	1.2	3.6	7.70	5210	57	0.42	0.82
MW-17	96-0625-05	25-Jun-96	7.83	--	11.98	1	3	NM	NM	NM	0.266	N/A
MW-18	MW-18	14-Apr-95	6.65/6.66	0.01	13.26(P)/13.25	N/A	N/A	NM	NM	NM	N/A	N/A
MW-18	Not Sampled	2-Aug-95	8.39/9.00	0.61	11.52(P)/10.91	N/A	N/A	N/A	N/A	NM	N/A	N/A
MW-18	Not Sampled	2-Aug-95	8.39/9.00	0.61	11.52(P)/10.91	N/A	N/A	N/A	N/A	NM	N/A	N/A
MW-18	Not Sampled	28-Mar-96	6.54/7.24	0.7	13.37(P)/12.67	N/A	N/A	N/A	N/A	NM	N/A	N/A
MW-18	Not Sampled	25-Jun-96	7.05/7.91	0.86	12.86(P)/12.00	N/A	N/A	N/A	N/A	NM	N/A	N/A

Notes:

^A Groundwater elevations relative to Mean Low Low Water (MLLW).

^B TPH-D means Total petroleum hydrocarbons as diesel, method WTPH-D, Extended

^C TPH-Oil means Total Petroleum Hydrocarbons as Oil, method WTPH-D, Extended.

^D MW-12 was overdrilled and abandoned after measurements were collected and approximately 0.5 gallons of product and water was removed from the well.

^E Results partially due to individual peaks eluting in the diesel and oil ranges.

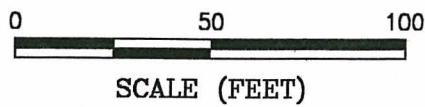
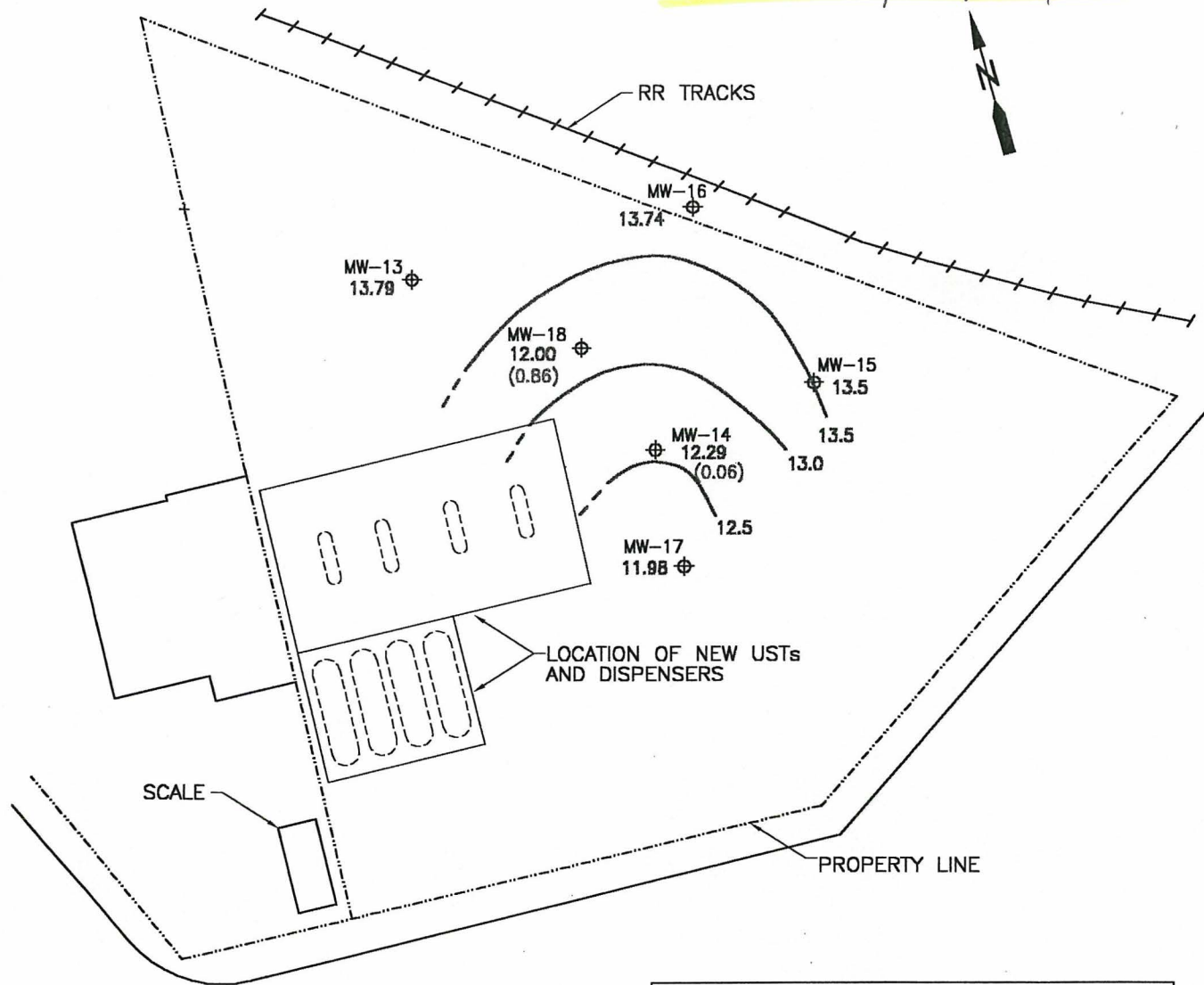
^F Complex mixture of diesel and oil range organics.

NM means Not Measured.

N/A means Not Analyzed.


All measurements are reported in feet below top of PVC casing.

Tanks #1, #2, #3, #4



EXPLANATION	
MW-13 ⊕ 13.79 (0.82)	MONITORING WELL LOCATION WITH GROUNDWATER ELEVATION PRODUCT THICKNESS

BASE MAP FROM AGRA 1994

 **GeoScience Management, Inc.**
Environmental Consulting Services
 18808 89th Avenue NE
 Bothell, Washington 98011

W.O. _____
 DESIGN _____
 DRAWN JB, HWS
 DATE 10/96
 SCALE 50'=1" A SIZE

FIGURE 1
 PORT OF SEATTLE - TERMINAL 115
 PROPOSED FOLEY CARDLOCK FACILITY
 SEATTLE, WASHINGTON
 WATER LEVEL ELEVATIONS, JUNE 1996

Table 1
Field Parameters and Groundwater Sampling Results
December 2, 1996 Sampling Event
Port of Seattle Terminal 115 Project

Monitoring Well Identification	Sample Identification	Date Measured	Depth to Product/Water (in feet btoc)	Product Thickness (feet)	Product/ Groundwater Elevation ¹	Pore Volume (Gallons)	Gallons Purged	pH	Specific Conductance (microSiemens per centimeter)	Temperature (°F)	TPH-D ² (mg/L)	TPH-O ³ (mg/L)
MW-12	MW-12	04/14/95	7.65/8.00	0.35	12.13/11.78	N/A	N/A	NM	NM	NM	N/A	N/A
MW-12 ⁴	Not Sampled	07/31/95	9.77/9.85	0.08	10.01/9.93	N/A	N/A	N/A	N/A	NM	N/A	N/A
Abandoned July 31, 1995		--	--	--	--	--	--	--	--	NM	--	--
MW-13	MW-13	04/14/95	--/4.68	--	15.03	1.5	5.4	NM	NM	NM	0.31	N/A
MW-13	95-0902-05	08/02/95	--/7.89	--	11.82	1.2	3.6	7.1	1,210	NM	0.62	0.82
MW-13	120195-01	12/01/95	--/3.55	--	16.16	1.7	5.4	7	1,020	55.0	1.50	1.1
MW-13	96-0328-01	03/28/96	--/5.21	--	14.50	1.4	4.4	7.4	628	55.5	0.29	<0.75
MW-13	96-0625-01	06/25/96	--/5.92	--	13.79	1.1	3.5	NM	NM	NM	0.33	N/A
Well was destroyed during new building construction in August 1996.												
MW-14	MW-14	04/14/95	--/6.64	--	12.94	1.3	3.9	NM	NM	NM	5.4 ⁵	N/A
MW-14	95-0902-01	08/02/95	(Trace Sheen)/8.14	--	11.44	1.2	4.8	7.3	51,400	NM	180	4.5
Duplicate	95-0902-06	08/02/95	(Trace Sheen)/8.14	--	11.44	1.2	4.8	7.3	51,400	NM	110	3.8
MW-14	120195-02	12/01/95	(Trace Sheen)/5.52	--	14.06	1.4	4.5	7.9	>20,000	55.0	91	(Diluted Out)
Duplicate	120195-03	12/01/95	(Trace Sheen)/5.52	--	14.06	1.4	4.5	7.9	>20,000	55.0	92	(Diluted Out)
MW-14	96-0328-02	03/28/96	6.93/6.94	0.01	12.65/12.64	1.2	3.8	7.9	>30,000	58.5	40	0.88
Duplicate	96-0328-02	03/28/96	6.93/6.94	0.01	12.65/12.64	1.2	3.8	7.9	>30,000	58.5	40	0.91
MW-14	96-0625-06	06/25/96	7.23/7.29	0.06	12.35/12.29	1.1	3.3	NM	NM	NM	38.9	N/A
MW-14	96-1022-05	10/22/96	7.47/7.50	0.03	12.04/12.01	1.1	3.5	NM	NM	NM	80.2	1.23
MW-14	Not Sampled	12/02/96	6.34/9.34	3.0	13.18/10.18	NA	NA	NM	NM	NM	--	--
MW-15	MW-15	04/14/95	--/4.79	--	14.74	1.6	4.2	NM	NM	NM	1.30 ^{5,6}	N/A
MW-15	95-0902-03	08/02/95	(Trace Sheen?)/7.11	--	12.42	1.4	4.2	9.1	2,700	NM	1.10	1.5
MW-15	120195-04	12/01/95	--/3.74	--	15.79	1.7	5.7	9.3	>2,000 (?)	58.0	1.50	1.4
MW-15	96-0328-04	03/28/96	--/5.57	--	13.96	1.4	4.5	9.3	32,800	55.3	0.98	0.75
MW-15	96-0625-03	06/25/96	--/6.03	--	13.5	1.1	3.4	NM	NM	NM	1.03	N/A
Duplicate	96-0625-03	06/25/96	--/6.03	--	13.5	1.1	3.4	NM	NM	NM	0.984	N/A
MW-15	96-1022-02	10/22/96	--/5.8	--	13.73	1.2	4.8	8.3	3,101	61.8	0.802	<0.75
MW-15	96-1202-03	12/02/96	--/4.58	--	14.95	1.4	4.5	6.1	2,450	53.6	0.820	<0.75
MW-16	MW-16	04/14/95	--/5.74	--	15.06	1.8	N/A	NM	NM	NM	1.70 ^{5,6}	N/A
MW-16	95-0902-04	08/02/95	--/7.88	--	12.92	1.2	3.6	8.8	1,100	NM	0.460	<0.75
MW-16	120195-05	12/01/95	--/4.64	--	16.16	1.5	5.1	9.3	890	56.5	0.540	<0.75
MW-16	96-0328-05	03/28/96	--/6.54	--	14.26	1.2	3.8	9.5	8,060	55.3	0.300	<0.75
MW-16	96-0625-02	06/25/96	--/7.06	--	13.74	1.0	3.0	NM	NM	NM	0.311	N/A
MW-16	96-1022-01	10/22/96	--/7.03	--	13.77	1.0	3.3	9.4	957	62.3	0.376	<0.75
MW-16	96-1202-01	12/02/96	--/5.64	--	15.16	1.2	4.0	7.4	665	53.5	0.641	<0.75
Duplicate	96-1202-02	12/02/96	--/5.54	--	15.16	1.2	4.0	7.4	665	53.5	0.873	<0.75

Table 1
Field Parameters and Groundwater Sampling Results
December 2, 1996 Sampling Event
Port of Seattle Terminal 115 Project

Monitoring Well Identification	Sample Identification	Date Measured	Depth to Product/Water (in feet btoc)	Product Thickness (feet)	Product/Groundwater Elevation ¹	Pore Volume (Gallons)	Gallons Purged	pH	Specific Conductance (microSiemens per centimeter)	Temperature (° F)	TPH-D ² (mg/L)	TPH-O ³ (mg/L)
MW-17	MW-17	04/14/95	--/6.98	--	12.83	1.2	3.6	NM	NM	NM	0.570 ⁵	NM
MW-17	95-0902-02	08/02/95	--/9.17	--	10.64	0.8	3.2	6.7	950	NM	0.680	1.6
MW-17	120195-06	12/01/95	(Trace Sheen)/6.50	--	13.31	1.2	3.6	6.8	631	57.0	0.420	1.6
MW-17	96-0328-06	03/28/96	6.88/6.89	0.01	12.93/12.92	1.2	3.6	7.70	5,210	57.0	0.420	0.82
MW-17	96-0625-05	06/25/96	--/7.83	0.01	11.98	1.0	3.0	NM	NM	NM	0.266	N/A
MW-17	96-1022-04	10/22/96	--/7.82	--	11.99	1.0	3.0	6.82	1,670	60.2	0.451	<0.75
Duplicate	96-1022-04	10/22/96	--/7.82	--	11.99	1.0	3.0	6.82	1,670	60.2	0.451	<0.75
MW-17	96-1202-04	12/02/96	--/6.34	--	13.47	1.1	3.5	4.58	1,040	53.8	0.370	<0.75
MW-18	MW-18	04/14/95	6.65/6.66	0.01	13.26/13.25	N/A	N/A	NM	NM	NM	N/A	N/A
MW-18	Not Sampled	08/02/95	8.39/9.00	0.61	11.52/10.91	N/A	N/A	NM	NM	NM	N/A	N/A
MW-18	Not Sampled	08/02/95	8.39/9.00	0.61	11.52/10.91	N/A	N/A	NM	NM	NM	N/A	N/A
MW-18	Not Sampled	03/28/96	6.54/7.24	0.7	13.37/12.67	N/A	N/A	NM	NM	NM	N/A	N/A
MW-18	Not Sampled	06/25/96	7.05/7.91	0.86	12.86/12.00	N/A	N/A	NM	NM	NM	N/A	N/A
MW-18	Not Sampled	10/22/96	NM	Sheen ⁷	NM	N/A	N/A	NM	NM	NM	N/A	N/A
MW-18	Not Sampled	12/02/96	NM	0.13	NM	N/A	N/A	NM	NM	NM	N/A	N/A

Notes:

¹ Groundwater elevations relative to Mean Low Low Water (MLLW).

² TPH-D means Total petroleum hydrocarbons as diesel, method WTPH-D, Extended.

³ TPH-O means Total petroleum hydrocarbons as oil, method WTPH-D, Extended.

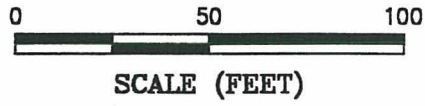
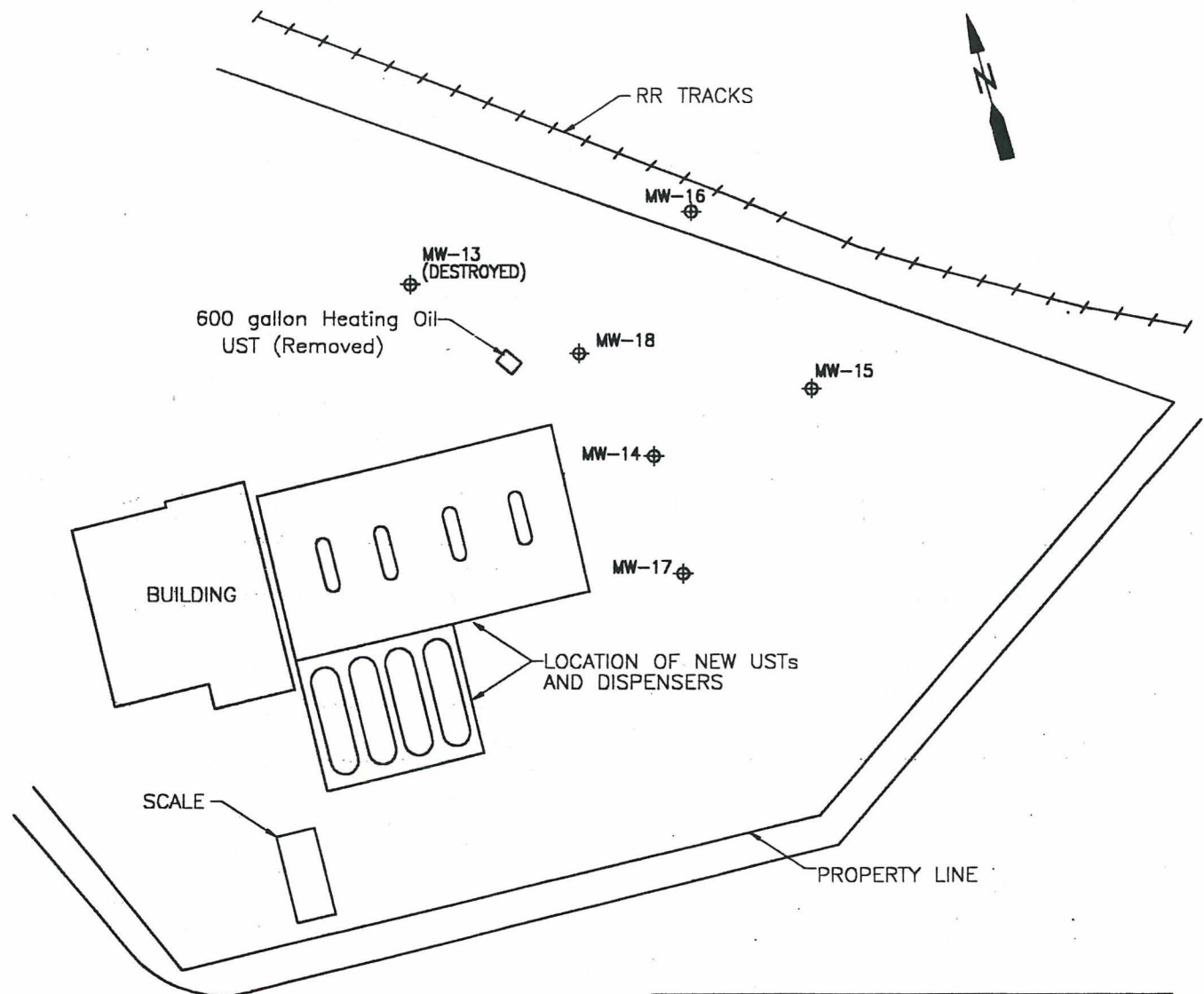
⁴ MW-12 was overdrilled and abandoned after measurements were collected and approximately 0.5 gallons of product and water was removed from the well. Results partially due to individual peaks eluting in the diesel and oil ranges.

⁶ Complex mixture of diesel and oil range organics.

⁷ Full product canister was emptied and reset.


NM means Not Measured. N/A means Not Analyzed. bTOC means feet below Top of PVC Casing.

(T-115)



EXPLANATION	
MW-14	EXISTING MONITORING WELL LOCATION

BASE MAP FROM AGRA 1994

 **GeoScience Management, Inc.**
Environmental Consulting Services
 18008 89th Avenue NE
 Bothell, Washington 98011

Job # 1002.01
 DESIGN _____
 DRAWN JB, HWS
 DATE October 1996
 SCALE 1" = 50'

FIGURE 2
 PORT OF SEATTLE - TERMINAL 115
 PROPOSED FOLEY CARDLOCK FACILITY
 SEATTLE, WASHINGTON
 SITE PLAN