

APPENDIX A

Historical Photographs and Maps



Reserve Silica

27625-27799 SE Ravensdale Way

Black Diamond, WA 98010

Inquiry Number: 5734761.1

August 01, 2019

The EDR Aerial Photo Decade Package



6 Armstrong Road, 4th floor
Shelton, CT 06484
Toll Free: 800.352.0050
www.edrnet.com

EDR Aerial Photo Decade Package

08/01/19

Site Name:

Reserve Silica
27625-27799 SE Ravensdale V
Black Diamond, WA 98010
EDR Inquiry # 5734761.1

Client Name:

Aspect Consulting LLC.
710 2nd Ave S. Suite 510
Seattle, WA 98104
Contact: Ali Cochrane



Environmental Data Resources, Inc. (EDR) Aerial Photo Decade Package is a screening tool designed to assist environmental professionals in evaluating potential liability on a target property resulting from past activities. EDR's professional researchers provide digitally reproduced historical aerial photographs, and when available, provide one photo per decade.

Search Results:

<u>Year</u>	<u>Scale</u>	<u>Details</u>	<u>Source</u>
2017	1"=500'	Flight Year: 2017	USDA/NAIP
2013	1"=500'	Flight Year: 2013	USDA/NAIP
2009	1"=500'	Flight Year: 2009	USDA/NAIP
2006	1"=500'	Flight Year: 2006	USDA/NAIP
1990	1"=500'	Acquisition Date: July 18, 1990	USGS/DOQQ
1980	1"=500'	Flight Date: July 27, 1980	USDA
1979	1"=500'	Flight Date: July 15, 1979	USGS
1968	1"=500'	Flight Date: September 03, 1968	USGS
1957	1"=500'	Flight Date: September 13, 1957	USGS
1952	1"=500'	Flight Date: July 01, 1952	USGS
1944	1"=500'	Flight Date: April 27, 1944	DIA

When delivered electronically by EDR, the aerial photo images included with this report are for ONE TIME USE ONLY. Further reproduction of these aerial photo images is prohibited without permission from EDR. For more information contact your EDR Account Executive.

Disclaimer - Copyright and Trademark Notice

This Report contains certain information obtained from a variety of public and other sources reasonably available to Environmental Data Resources, Inc. It cannot be concluded from this Report that coverage information for the target and surrounding properties does not exist from other sources. NO WARRANTY EXPRESSED OR IMPLIED, IS MADE WHATSOEVER IN CONNECTION WITH THIS REPORT. ENVIRONMENTAL DATA RESOURCES, INC. SPECIFICALLY DISCLAIMS THE MAKING OF ANY SUCH WARRANTIES, INCLUDING WITHOUT LIMITATION, MERCHANTABILITY OR FITNESS FOR A PARTICULAR USE OR PURPOSE. ALL RISK IS ASSUMED BY THE USER. IN NO EVENT SHALL ENVIRONMENTAL DATA RESOURCES, INC. BE LIABLE TO ANYONE, WHETHER ARISING OUT OF ERRORS OR OMISSIONS, NEGLIGENCE, ACCIDENT OR ANY OTHER CAUSE, FOR ANY LOSS OF DAMAGE, INCLUDING, WITHOUT LIMITATION, SPECIAL, INCIDENTAL, CONSEQUENTIAL, OR EXEMPLARY DAMAGES. ANY LIABILITY ON THE PART OF ENVIRONMENTAL DATA RESOURCES, INC. IS STRICTLY LIMITED TO A REFUND OF THE AMOUNT PAID FOR THIS REPORT. Purchaser accepts this Report "AS IS". Any analyses, estimates, ratings, environmental risk levels or risk codes provided in this Report are provided for illustrative purposes only, and are not intended to provide, nor should they be interpreted as providing any facts regarding, or prediction or forecast of, any environmental risk for any property. Only a Phase I Environmental Site Assessment performed by an environmental professional can provide information regarding the environmental risk for any property. Additionally, the information provided in this Report is not to be construed as legal advice.

Copyright 2019 by Environmental Data Resources, Inc. All rights reserved. Reproduction in any media or format, in whole or in part, of any report or map of Environmental Data Resources, Inc., or its affiliates, is prohibited without prior written permission.

EDR and its logos (including Sanborn and Sanborn Map) are trademarks of Environmental Data Resources, Inc. or its affiliates. All other trademarks used herein are the property of their respective owners.



Approximate
Extents of LDA

Approximate
Extents of DSP

INQUIRY #: 5734761.1

YEAR: 2017

— = 500'





Approximate
Extents of LDA

Approximate
Extents of DSP

INQUIRY #: 5734761.1

YEAR: 2013

— = 500'





Approximate
Extents of LDA

Approximate
Extents of DSP

INQUIRY #: 5734761.1

YEAR: 2009

— = 500'





Approximate
Extents of LDA

Approximate
Extents of DSP

INQUIRY #: 5734761.1

YEAR: 2006

— = 500'





Approximate
Extents of LDA

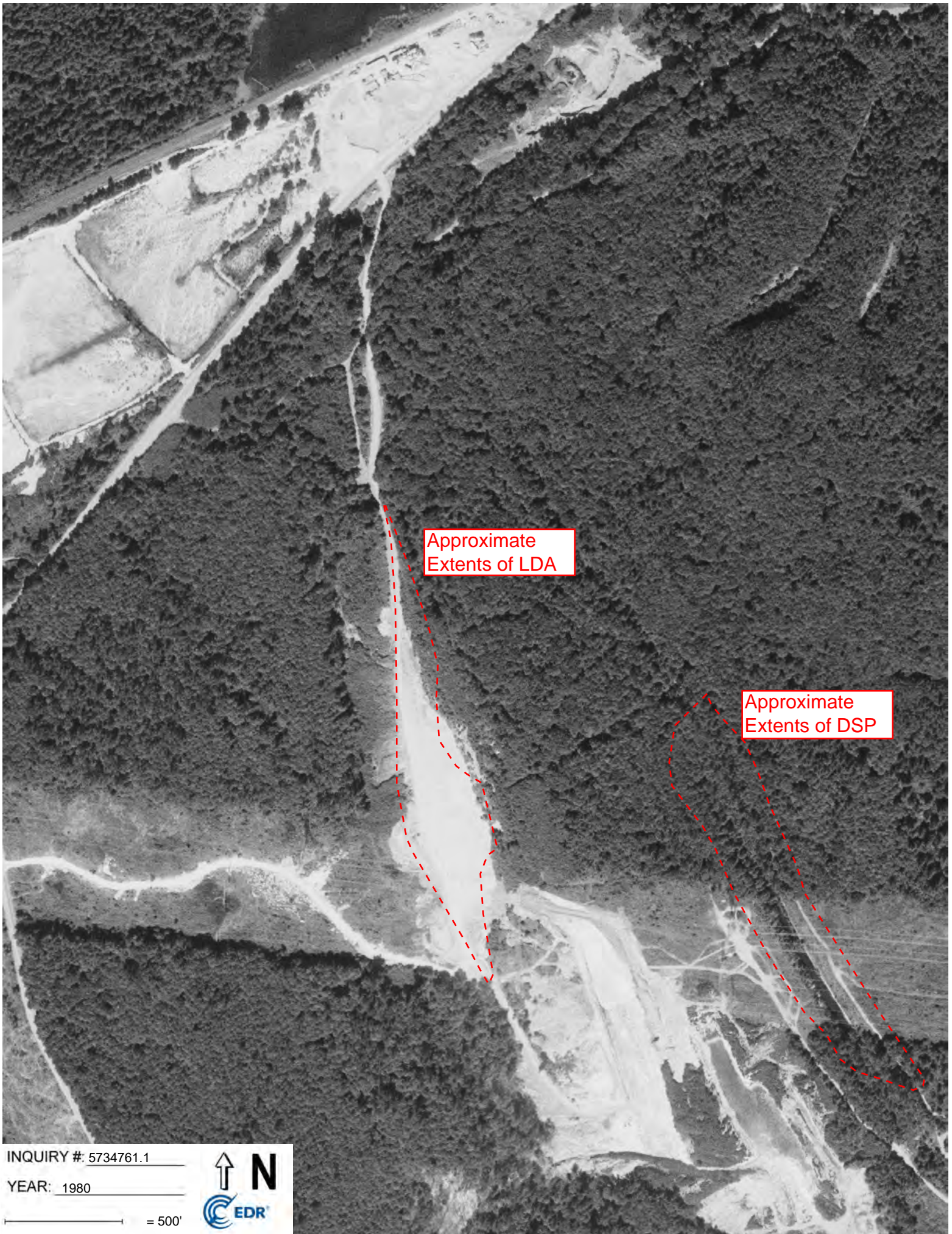
Approximate
Extents of DSP

INQUIRY #: 5734761.1

YEAR: 1990

— = 500'





Approximate
Extents of LDA

Approximate
Extents of DSP

INQUIRY #: 5734761.1

YEAR: 1980

— = 500'



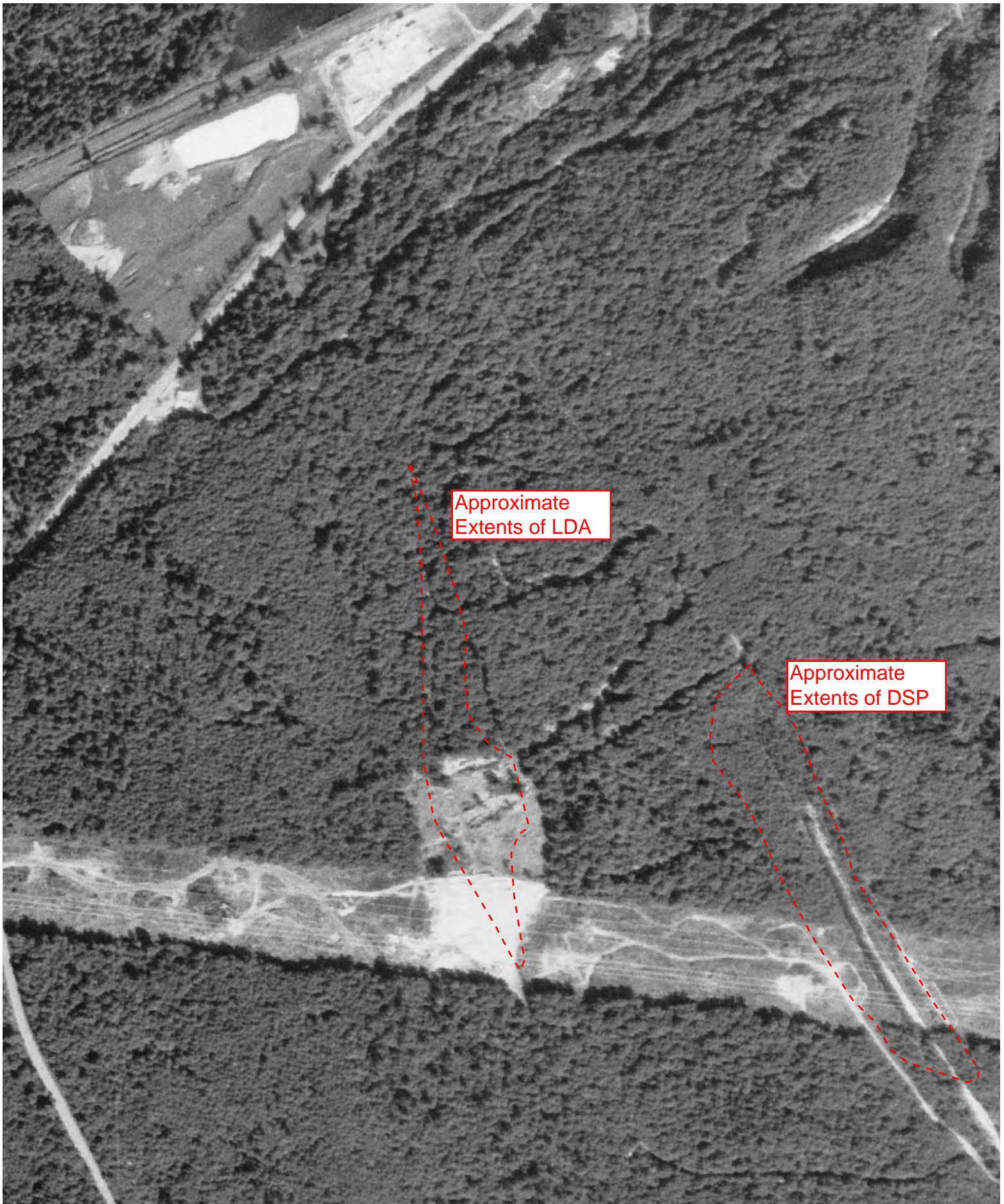


INQUIRY #: 5734761.1

YEAR: 1979

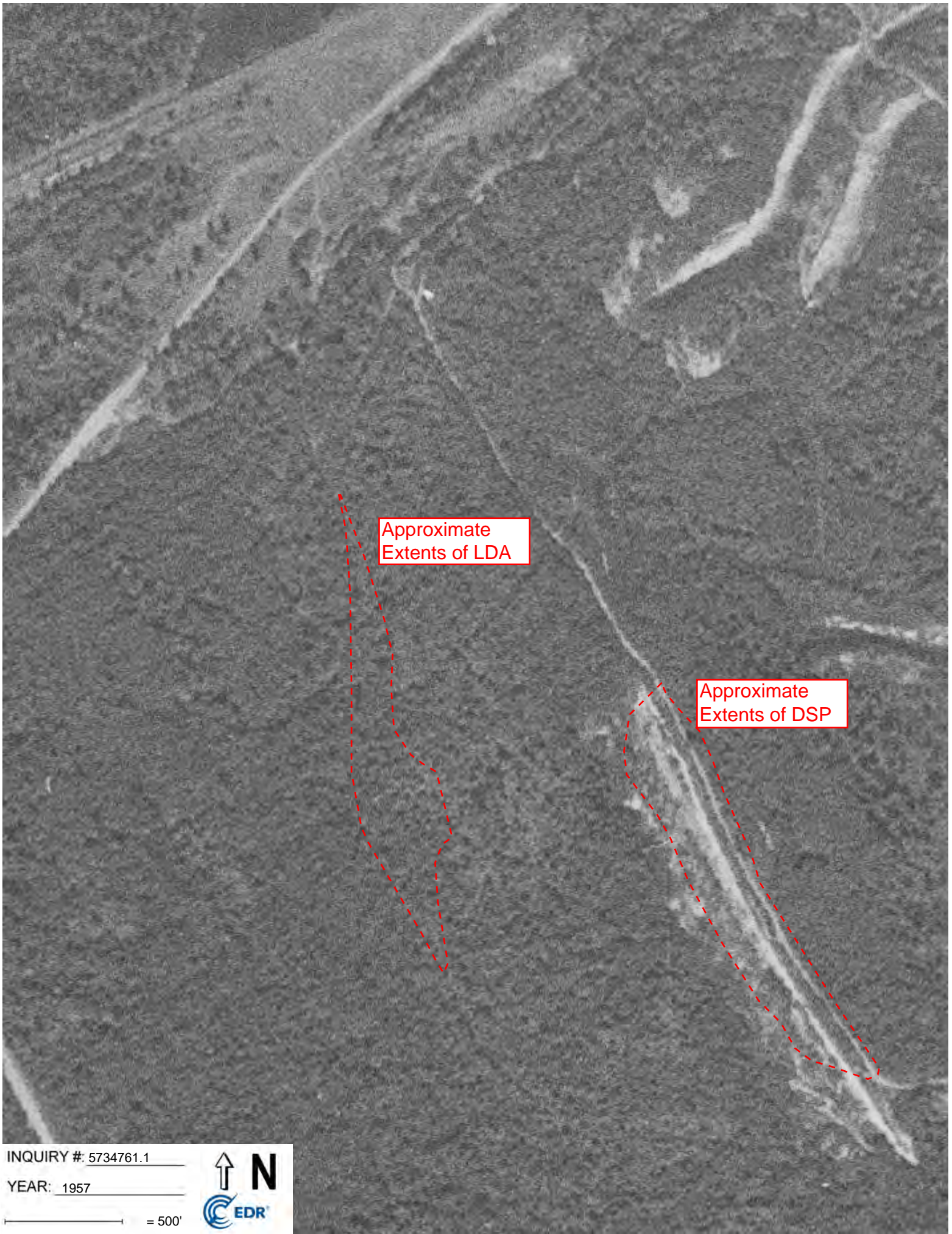
— = 500'





Approximate
Extents of LDA

Approximate
Extents of DSP



Approximate
Extents of LDA

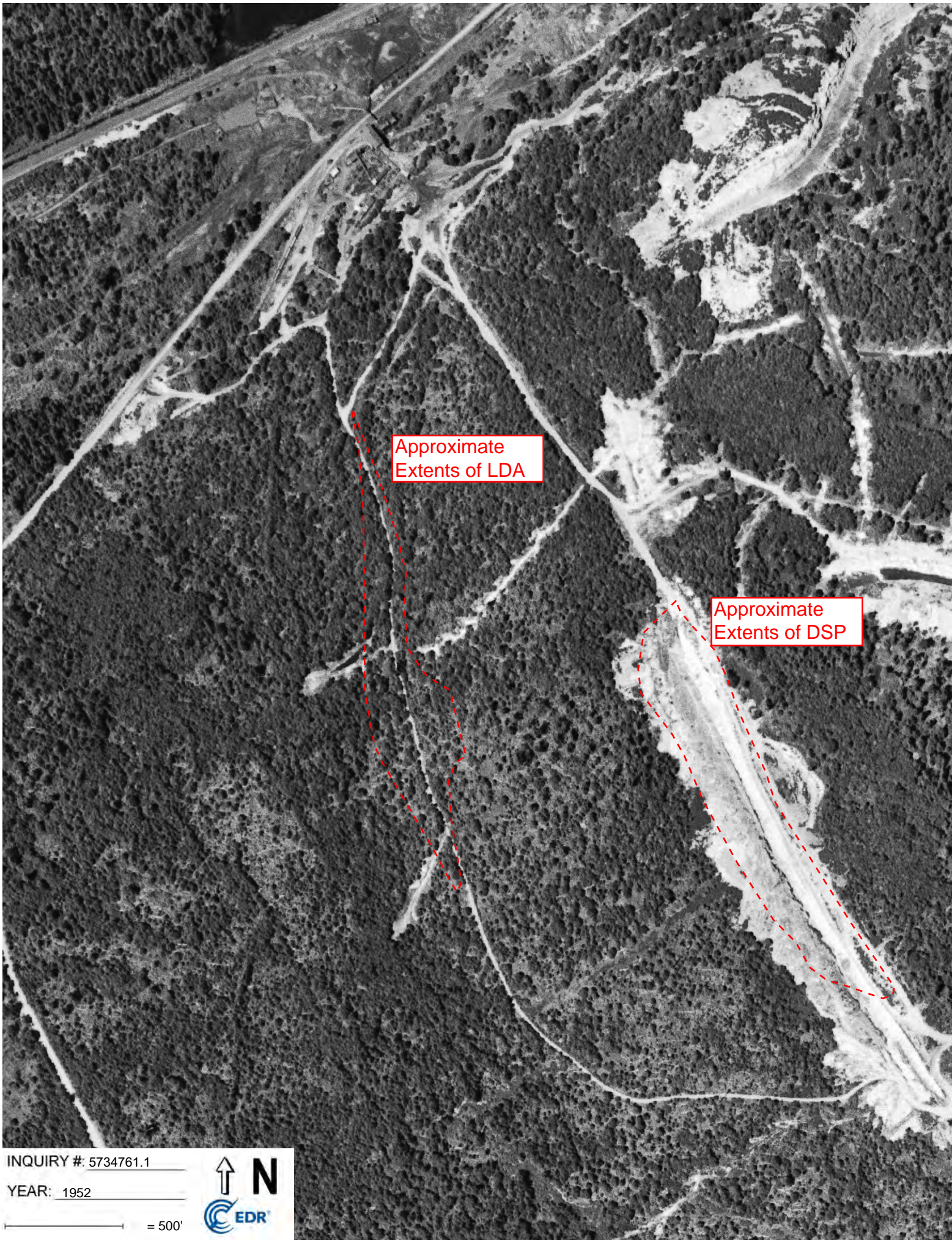
Approximate
Extents of DSP

INQUIRY #: 5734761.1

YEAR: 1957

— = 500'





Approximate
Extents of LDA

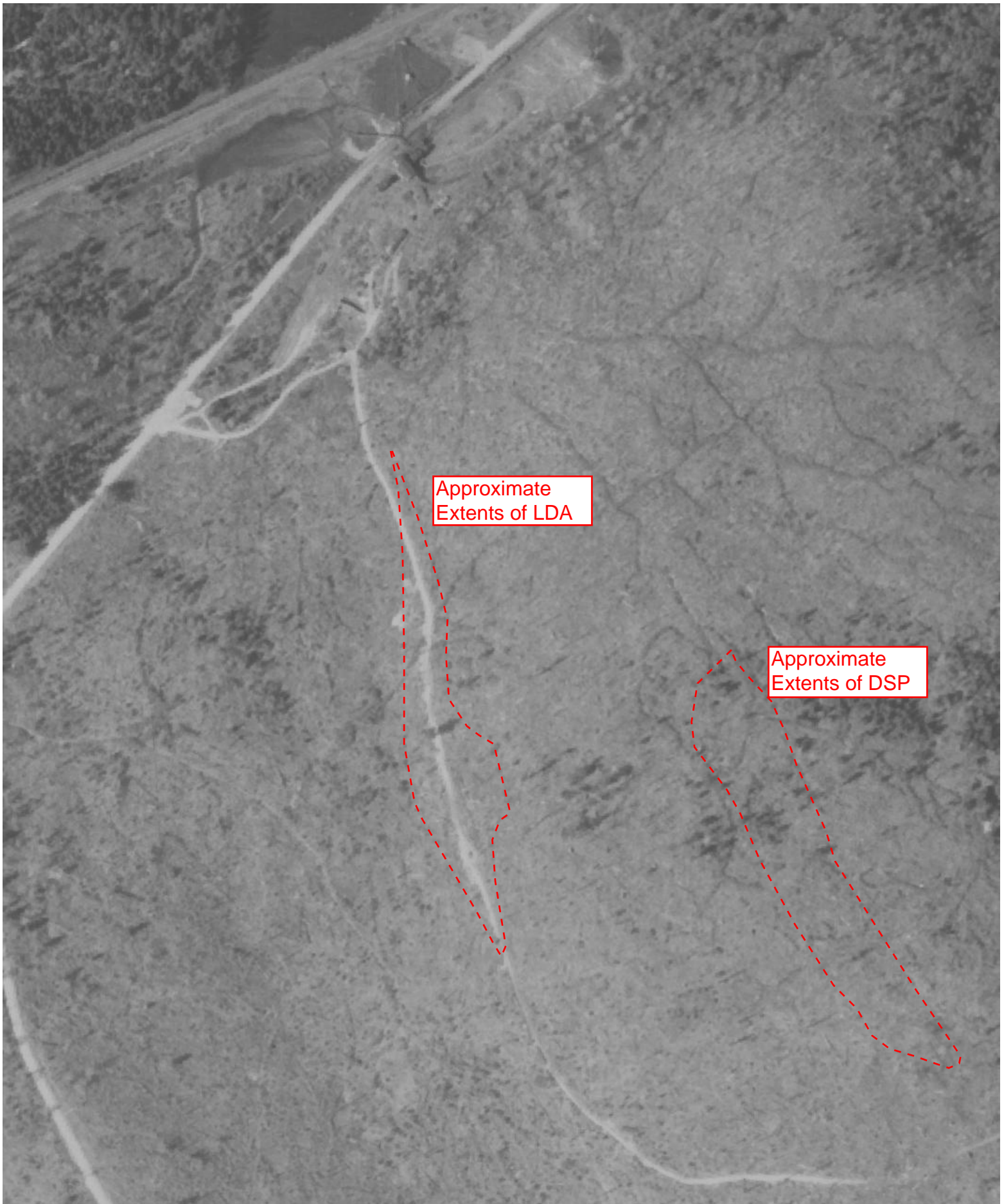
Approximate
Extents of DSP

INQUIRY #: 5734761.1

YEAR: 1952

— = 500'





Approximate
Extents of LDA

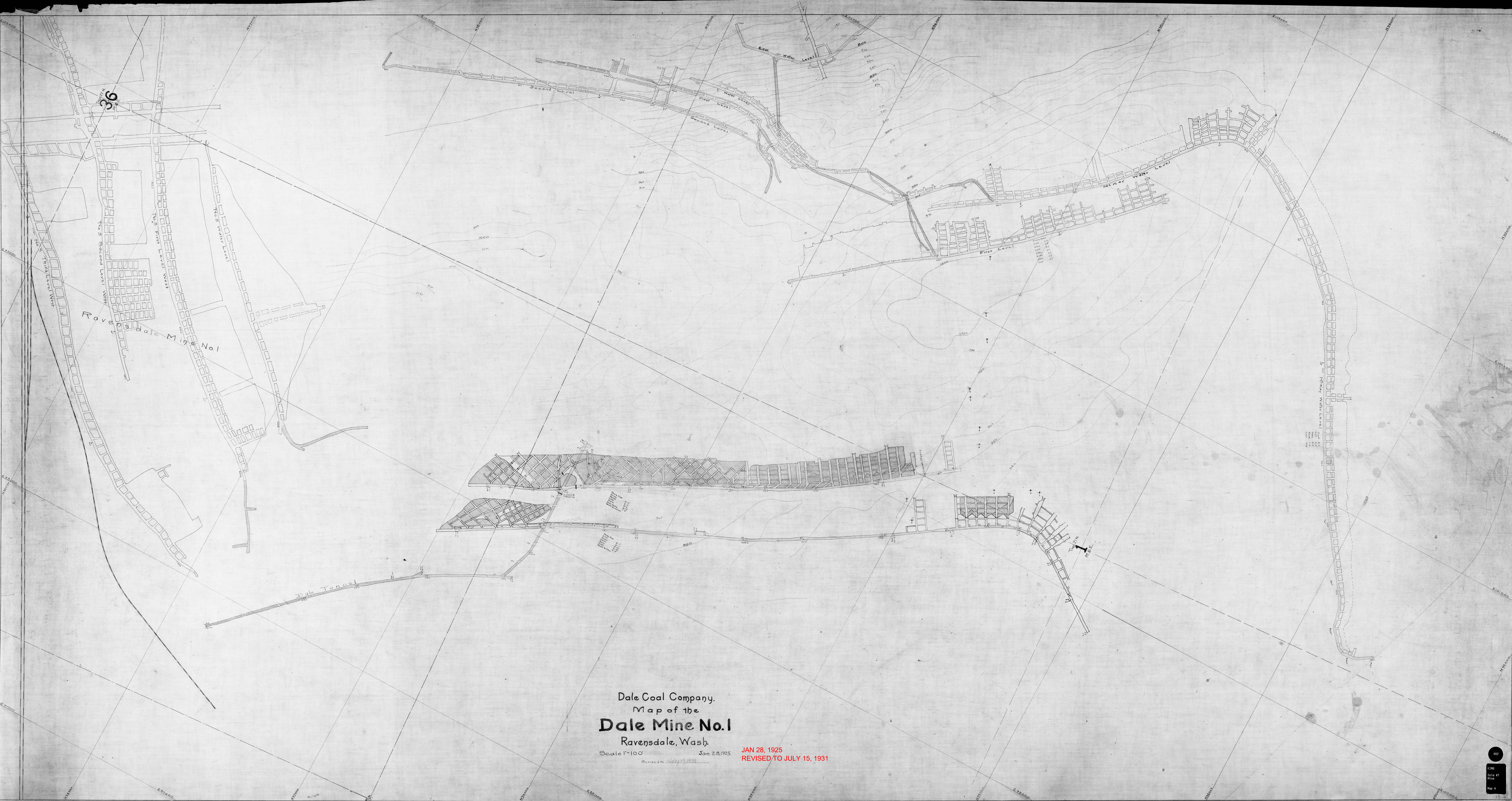
Approximate
Extents of DSP

INQUIRY #: 5734761.1

YEAR: 1944

— = 500'



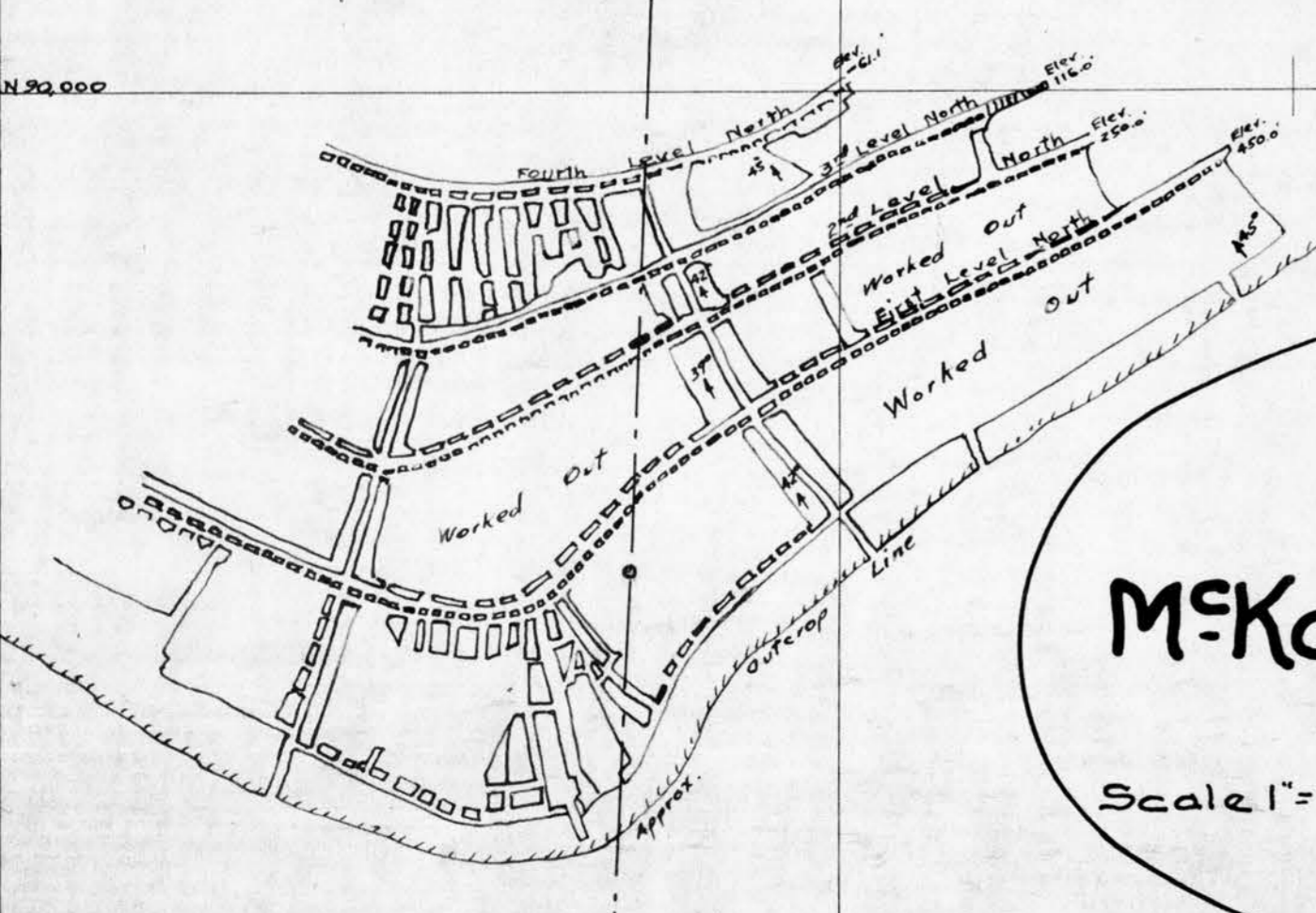
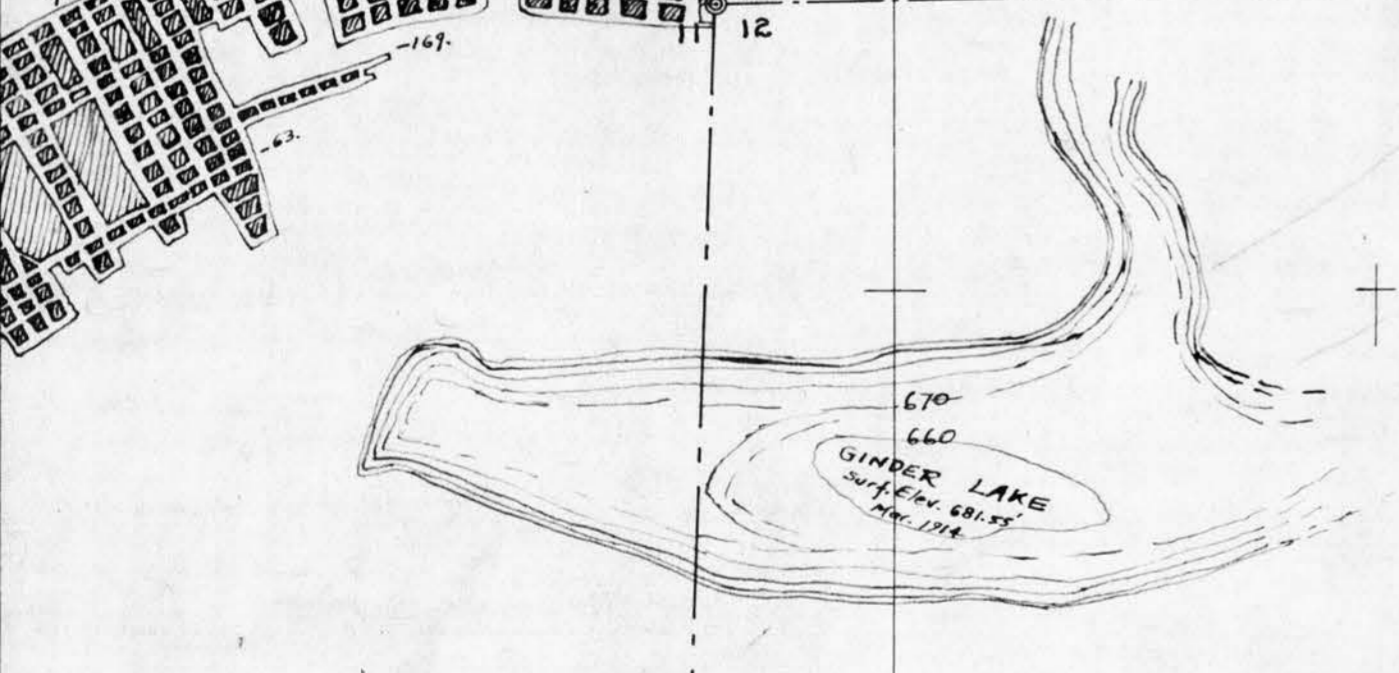
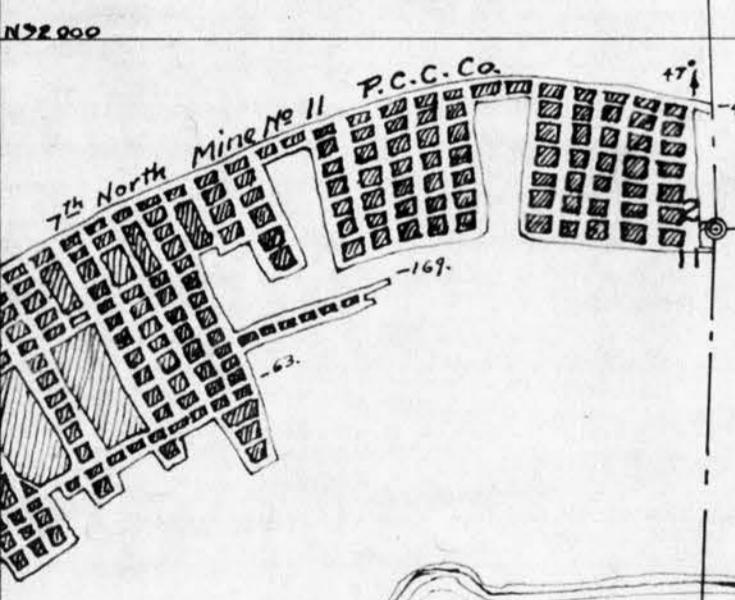
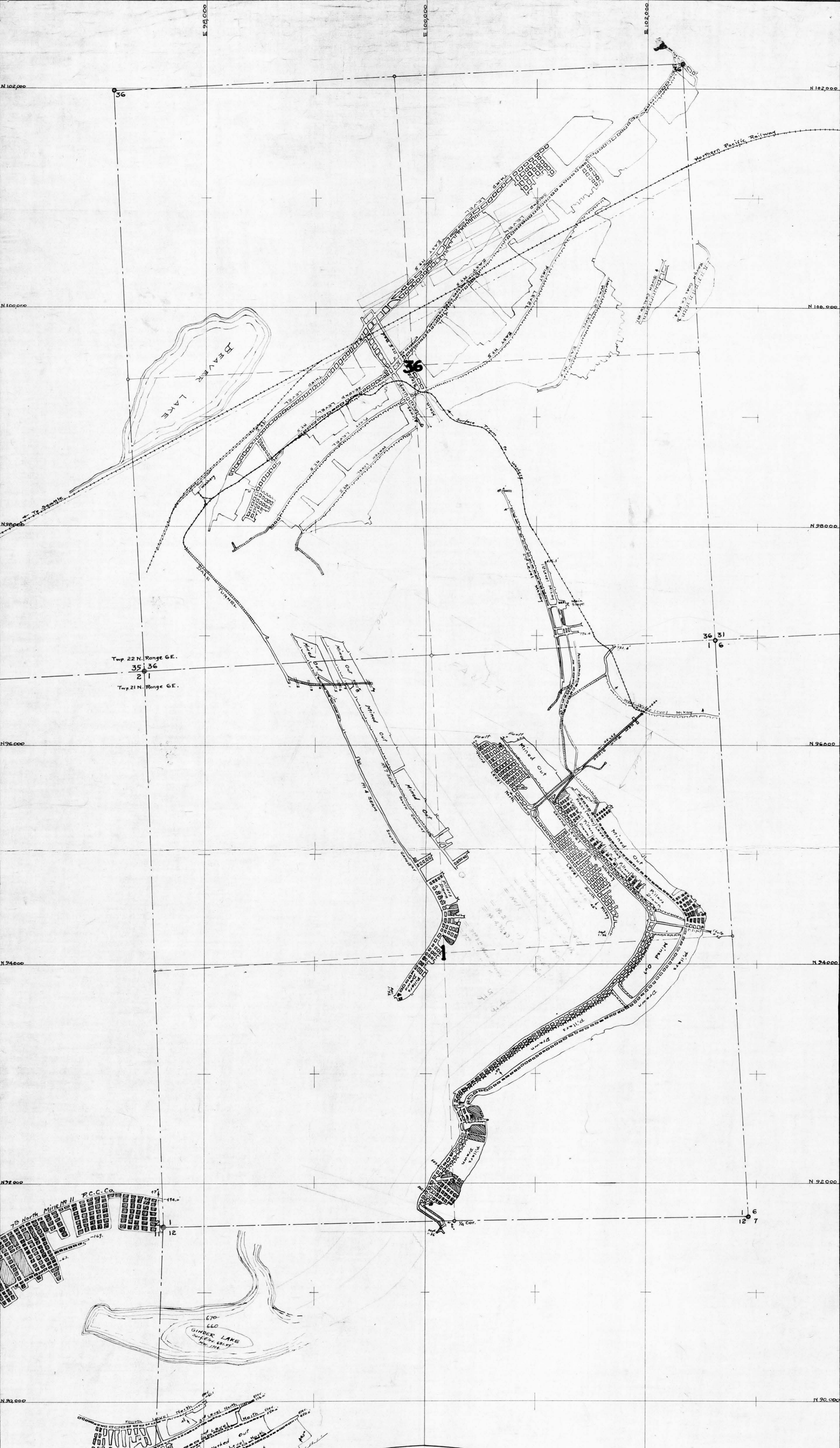


Dale Coal Company.
Map of the
Dale Mine No. 1
Ravensdale, Wash.

Scale 1"=100' Jan. 28, 1925

JAN 28, 1925
REVISED TO JULY 15, 1931

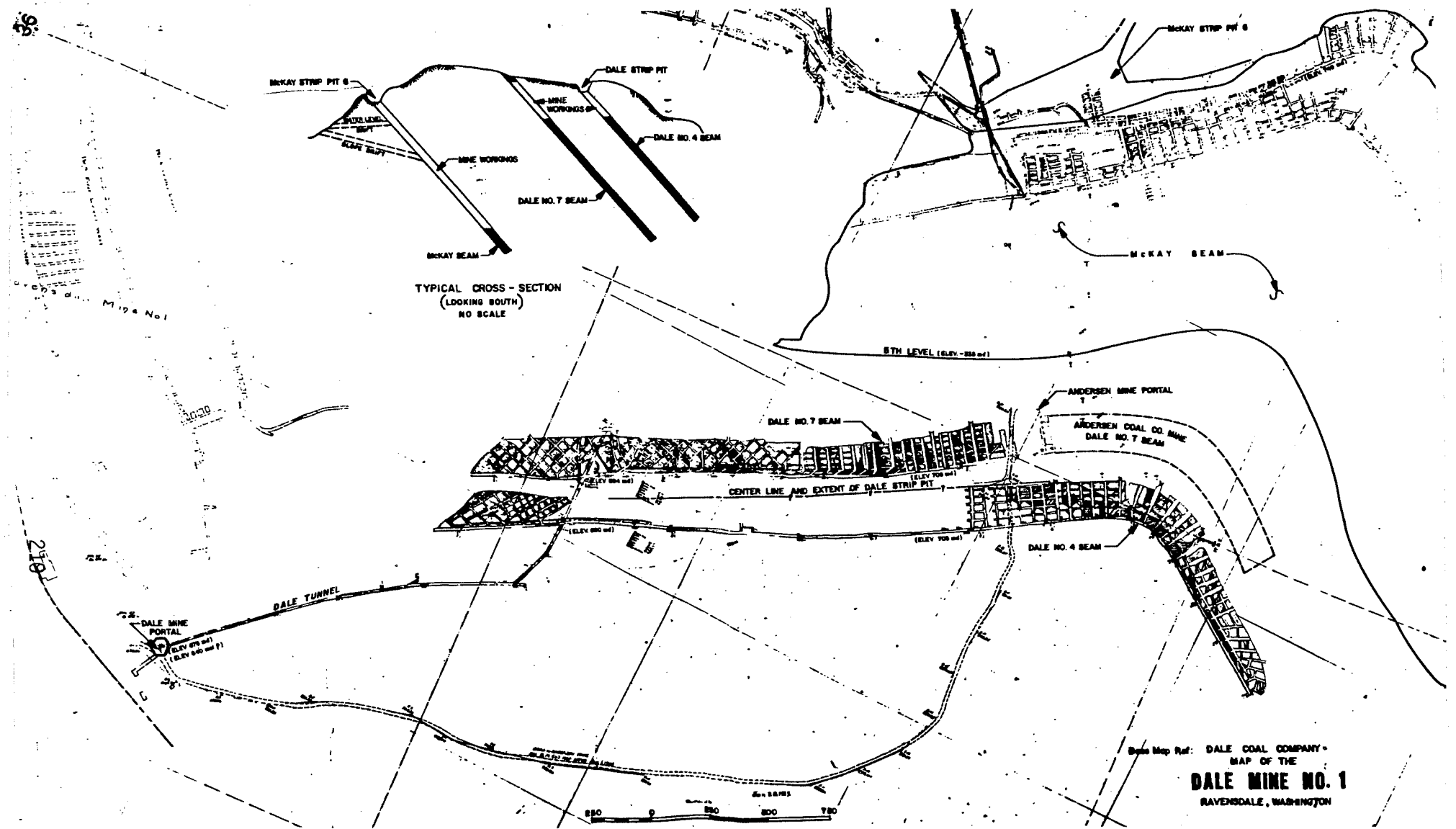
Revised to July 15, 1931



N.W.I. Co.
Map of the
Ravensdale Mines
McKay and No 5 Bed Workings
Ravensdale, Wash.
 Scale 1"=400'
D. S. Owen
 Chief Engineer

Seattle, Wash.
 Feb. 1, 1924.
 Revised to SEPT. 1, 1936
 MSM.

FEB 1, 1924
REVISED TO SEPT 1, 1936



IDEAL

Ideal Basic Industries Cement Division

SCALE: 1"=600'	APPROVED BY:	DRAWN BY
DATE:		REVISED
PLAN AND CROSS-SECTIONAL VIEWS OF THE DALE AND MC KAY COAL SEAMS		
DALE TUNNEL AND DALE MINE PORTAL		FIGURE 43

