

November 21, 2006

Mr. Jim Riggle  
Olympic Athletic Club  
5301 Leary Avenue Northwest  
Seattle, Washington 98107

**RE: GROUNDWATER MONITORING REPORT  
OLYMPIC ATHLETIC CLUB  
5301 LEARY AVENUE NORTHWEST  
SEATTLE, WASHINGTON  
FARALLON PN: 500-001**

Dear Mr. Riggle:

Farallon Consulting, L.L.C. (Farallon) has prepared this letter report to present the results of the May and August 2006 groundwater monitoring and sampling at the Olympic Athletic Club located at 5301 Leary Avenue NW in Seattle, Washington (herein referred to as the Site) (Figure 1). The work was conducted in accordance with the scope of work in Farallon's *Proposed Scope of Work and Cost Estimate for Groundwater Sampling* dated May 18, 2006. Previous environmental investigations at the Site have detected concentrations of total petroleum hydrocarbons (TPH) as gasoline-range organics (GRO) and benzene, toluene, ethylbenzene, and xylenes (BTEX) in groundwater exceeding the Washington State Department of Ecology (Ecology) Model Toxics Control Act Cleanup Regulation (MTCA) Method A cleanup levels.

The purpose of the monitoring events was to determine the direction of groundwater flow at the Site, and to evaluate the current groundwater conditions at the Site. This letter report includes a brief summary of previous environmental investigations at the Site, a description of field activities conducted by Farallon, and a presentation of the results.

### PREVIOUS ENVIRONMENTAL INVESTIGATIONS

Converse Consultants NW completed a ~~Phase II Environmental Site Assessment (Phase II ESA)~~ at the Site in ~~September 1993~~ that investigated potential sources of TPH at and adjacent to the Site, including a former retail fuel service station that had operated on the northern corner of the Site, and a former retail fuel service station that had been located northeast of the Site. The Phase II ESA was conducted to investigate whether releases of TPH had occurred at either of the former retail fuel stations. The Phase II ESA included advancing two soil borings, completing one of the borings as a monitoring well, and collecting soil and groundwater samples for laboratory analysis. The laboratory analytical results of soil samples collected from the two borings did not detect concentrations of TPH above the laboratory method reporting limits. Concentrations of benzene and lead exceeding the then-current MTCA Method A cleanup levels were detected in the groundwater sample collected from monitoring well MW-1, located on the



southeastern portion of the Site (Figure 2). The laboratory analytical results of the groundwater sample detected concentrations of GRO, TPH as diesel-range organics (DRO), toluene, ethylbenzene, and xylenes above the laboratory practical quantitation limit.

As a follow-up to the Phase II ESA, Converse Consultants NW conducted an additional subsurface investigation in January and February 1994, summarized in an Environmental Site Characterization report dated March 17, 1994, prepared by Converse Consultants NW. The additional investigation consisted of installation and sampling of three groundwater monitoring wells and collection of soil and groundwater samples for laboratory analysis. The laboratory analytical results detected concentrations of GRO, benzene, and xylenes in soil exceeding the then-current MTCA Method A cleanup levels. Concentrations of DRO were detected in soil, but were not quantified. The laboratory analytical results of groundwater samples collected from monitoring wells MW-1, MW-2, MW-3, and MW-4 detected concentrations of GRO, lead, benzene, ethylbenzene, and xylenes exceeding the then-current MTCA Method A cleanup levels (Figure 2) (Table 2). The groundwater flow direction at the Site calculated during the additional investigation in 1994 was observed to be to the south-southwest.

Groundwater monitoring and sampling was conducted at the Site by Lloyd & Associates, Inc. in October 1995 (Olympic Athletic Club Project Update dated October 20, 1995, prepared by Lloyd & Associates, Inc.). Approximately 12 to 14 inches of light nonaqueous-phase liquid (LNAPL) was measured in monitoring well MW-3 in 1995 (Figure 3). The laboratory analytical results of groundwater samples collected from monitoring wells MW-1, MW-2, and MW-4 detected concentrations of GRO, benzene, and ethylbenzene exceeding the then-current MTCA Method A cleanup levels (Table 2).

Golder Associates, Inc. (GPR Survey Summary dated November 27, 1995) conducted a ground-penetrating radar (GPR) survey at the Site in 1995 to investigate for the potential presence of underground storage tanks (USTs). One anomaly was identified by the GPR survey, although it could not be determined whether the anomaly was a UST.

Morse Environmental, Inc. (Monitoring Well Sample Results dated December 12, 2003) collected a groundwater sample from monitoring well MW-3 in November 2003 and submitted the sample to EMSL Analytical for laboratory analysis. Morse Environmental, Inc. does not define the media analyzed, but it appears that the sample collected and analyzed from monitoring well MW-3 was LNAPL and not groundwater. Morse Environmental, Inc. states that the laboratory analytical results detected 123 separate compounds, including miscellaneous solvents (both chlorinated and non-chlorinated), dry cleaning compounds, dyes, pesticides, plastics/rubber compounds, and wood preservatives. However, a review of the laboratory analytical report conducted by Farallon indicates that only petroleum-related compounds were detected in the sample. It appears that the laboratory analytical report was misinterpreted by Morse Environmental, Inc., and that the U-flag in the Qualifier column (Q) on the laboratory analytical report, which indicates that the compound was not detected above the laboratory detection limit, was unfamiliar to the data reviewer.

A review of Sanborn maps for the Site vicinity indicates that the retail fuel service station that was located on the Site may have operated as early as 1910 and continued until the late 1940s.



The retail service station that occupied the property located northeast of the Site is currently identified on Ecology's UST List as the Salmon Bay Eagles, and included six USTs, all of which were previously closed in-place at an unknown date. According to the Sanborn maps for the Site vicinity, the former retail service station that occupied the current Salmon Bay Eagles property operated around 1950. The UST List indicates that the property located directly north of the Site, across Leary Avenue Northwest, is identified as Wilson Ford East Portion, and previously included three USTs that were removed at an unknown date (Figure 2).

## GROUNDWATER MONITORING

On-Site monitoring wells MW-1 through MW-4 were sampled by Farallon in May 2006, and the four off-Site wells, MW-A, MW-B, MW-C, and MW-D, were sampled by Farallon in August 2006. The monitoring events included the following:

- Preparation of a Health and Safety Plan (HASP) in accordance with MTCA and Part 1910.120 of Title 29 of the Code of Federal Regulations prior to initiating field activities;
- Measurement of the depth to groundwater and/or LNAPL in each of the monitoring wells;
- Surveying of the top of casing of each monitoring well to an on-Site datum to determine vertical elevations and groundwater flow direction and gradient;
- Purging of groundwater from each monitoring well using U.S. Environmental Protection Agency (EPA) low-flow sampling protocols prior to collection of groundwater samples from the monitoring wells at the Site;
- Collection of a sample of LNAPL from monitoring well MW-3 for forensic analysis and interpretation;
- Submittal of the groundwater samples and LNAPL sample for laboratory analysis; and
- Evaluation of the groundwater monitoring and sampling analytical results.

A detailed description of the field activities is provided in the following subsections.

### GROUNDWATER MONITORING ACTIVITIES

Groundwater monitoring and sampling of on-Site monitoring wells MW-1 and MW-2 was completed on May 30, 2006. Groundwater samples were not collected from monitoring wells MW-3 and MW-4 due to the presence of measurable LNAPL in both wells. Depth to groundwater measurements of all four on-Site and the four off-Site monitoring wells, and monitoring and sampling of the four off-Site wells was completed on August 2, 2006. Each of the monitoring wells was opened, and the water level was permitted to equilibrate with atmospheric pressure for a minimum of 15 minutes prior to obtaining groundwater level measurements in the wells. Groundwater levels were measured to an accuracy of 0.01 foot using an electric water-level meter.

Purging and sampling of each monitoring well was performed using a peristaltic pump and dedicated polyethylene tubing, at flow rates ranging from 100 to 300 milliliters per minute. The



tubing intake was placed at approximately mid-screen in each monitoring well. During purging, water quality was monitored using a Yellow Springs Instrument 600XL water quality system equipped with a flow-through cell. The water quality parameters that were monitored and recorded included: temperature, pH, specific conductance, dissolved oxygen, turbidity, and oxidation-reduction potential. Each monitoring well was purged until the water quality parameters for temperature, pH, and specific conductance stabilized.

Following purging, groundwater samples were collected from the pump outlet tubing located upstream of the flow-through cell, and placed directly into laboratory-prepared sample containers. The containers were placed on ice in a cooler and transported to OnSite Environmental Inc. in Redmond, Washington (OnSite), under standard chain-of-custody protocols for laboratory analysis. The groundwater samples were submitted for analysis of GRO by Northwest Method NWTPH-Gx; BTEX by EPA Method 8021; DRO by Northwest Method NWTPH-Dx; and dissolved lead by EPA Method 6010B.

A sample of LNAPL was collected from monitoring well MW-3 during the August 2006 sampling event using a dedicated polyethylene bailer. The LNAPL was decanted directly from the bailer into laboratory-prepared sample containers. The containers were placed on ice in a cooler and transported to Friedman & Bruya, Inc. of Seattle, Washington under standard chain-of-custody protocols for laboratory analysis. The LNAPL sample was submitted for hydrocarbon identification by capillary gas chromatography using a flame ionization detector and electron capture detector; organic lead speciation and manganese by EPA Method 8082 modified; total organic lead and manganese by EPA Method 200.8; and paraffin, isoparaffin, aromatic, naphthene, and olefin (PIANO) constituents using ASTM D5134-92 modified.

All purge water generated during the monitoring event was placed in a labeled 55-gallon steel drum and temporarily stored on Site pending receipt of analytical data and proper disposal.

The north side of the top of casing of each of the on- and off-Site monitoring wells was surveyed to an arbitrary vertical elevation of 100.00 feet. A summary of the survey data for the Site is presented in Table 1.

## **GROUNDWATER MONITORING RESULTS**

The results of the field activities and laboratory analyses are presented below. Groundwater elevations and analytical results are presented in Tables 1 and 2, and illustrated on Figures 2 and 3, respectively. The laboratory analytical reports are provided in Attachment A.

Groundwater elevations were calculated for the Site using the August 2, 2006 water level measurements (Figure 2) (Table 1). The groundwater elevations for the monitoring event ranged from 84.45 feet (MW-3) to 88.70 feet (MW-D), relative to the arbitrary Site datum assigned an elevation of 100 feet (Table 1). The groundwater contours indicate a groundwater flow direction toward the south, with an average gradient of 0.01 foot per foot. Monitoring well MW-3 contained 0.82 and 0.96 foot of LNAPL during the May and August 2006 monitoring events, respectively (Table 1). Monitoring well MW-4 contained 0.04 and 0.18 foot of LNAPL during the May and August 2006 monitoring events, respectively (Table 1).



The analytical results for groundwater samples collected from on-Site monitoring wells MW-1 and MW-2 during the May 2006 monitoring event detected concentrations of GRO, BTEX, DRO, ORO, and dissolved lead below either the laboratory practical quantitation limit (PQL) or applicable MTCA Method A cleanup levels in both wells, with the exception of benzene in monitoring well MW-1, which exceeded the MTCA Method A cleanup level (Figure 3) (Table 2).

The analytical results for groundwater samples collected from off-Site monitoring wells MW-A through MW-D during the August 2006 monitoring event detected the following:

- Concentrations of GRO exceeded the MTCA Method A cleanup level in groundwater samples collected from monitoring wells MW-A, MW-B, and MW-C (Figure 3) (Table 2);
- Concentrations of benzene exceeded the MTCA Method A cleanup level in groundwater samples collected from monitoring wells MW-A and MW-C (Figure 3) (Table 2); and
- Concentrations of toluene, ethylbenzene, total xylenes, DRO, ORO, and dissolved lead in groundwater samples collected from all four monitoring wells were below either the laboratory PQL or applicable MTCA Method A cleanup levels (Figure 3) (Table 2).

Quality assurance/quality control (QA/QC) testing performed by OnSite included an evaluation of surrogate recoveries, method blanks, and matrix spike/matrix spike duplicates. All laboratory QA/QC data were within acceptable ranges of tolerance, as indicated in the laboratory analytical report, presented in Attachment A of this letter report.

#### FORENSIC ANALYSIS RESULTS

The laboratory analytical reports of the forensic analysis, including a brief interpretation of the results by Friedman & Bruya, Inc., are included in Attachment B. Friedman & Bruya, Inc. interpreted the hydrocarbon identification analysis of the LNAPL as a chemical signature indicative of natural gasoline. According to Friedman & Bruya, Inc., natural gasoline is typically associated with fuel manufacturing prior to the oil embargo in the 1970s or earlier. The LNAPL did not contain any detectable organic lead or manganese. The absence of tetraethyl lead in the LNAPL may indicate that the LNAPL was produced prior to 1922, when tetraethyl lead became a common additive to gasoline. According to Friedman & Bruya, Inc., the results of the PIANO analysis indicate that the LNAPL is characteristic of natural gasoline or similar materials, and not characteristic of typical reformulated gasoline based on the low level of aromatic hydrocarbons present. The type of LNAPL identified is difficult to age-date because many of the light-end hydrocarbons have degraded over time and cannot be accurately dated.

#### CONCLUSIONS

The results of groundwater monitoring indicate that ~~releases of gasoline have resulted in dissolved-phase concentrations of GRO and benzene exceeding the MTCA Method A cleanup levels in groundwater on and up-gradient of the Site.~~ Based on the forensic interpretation of the analytical results of a sample of LNAPL and the approximate dates of operation of the service stations, the LNAPL and dissolved-phase TPH that is present in monitoring wells on the Site



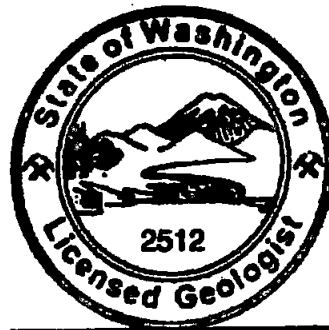
likely are attributable to releases associated with the operation of the former retail fuel service station on the Site. However the plume of dissolved-phase GRO detected in off-Site and up-gradient monitoring wells likely is attributable to a release(s) at surrounding properties.

### CLOSING

Farallon appreciates the opportunity to provide Olympic Athletic Club with environmental consulting and engineering services. Please contact the undersigned at (425) 295-0800 if you have any questions or comments regarding this report.

Sincerely,

Farallon Consulting, L.L.C.



Carla E. Brock, L.G.  
Associate Geologist

Carla E. Brock

Peter Jewett, L.G., L.E.G.  
Principal Engineering Geologist

Attachments: Figure 1, *Site Vicinity Map*  
Figure 2, *Groundwater Elevation Contour Map, August 2, 2006*  
Figure 3, *Site Plan Showing Groundwater Analytical Data*  
Table 1, *Summary of Groundwater Elevation Data*  
Table 2, *Summary of Groundwater Analytical Results*  
Attachment A, *Laboratory Analytical Results*  
Attachment B, *Forensic Analytical Results*

cc: Ms. Erika Wittman, Washington State Department of Ecology  
Mr. Barry Ziker, Salter Joyce Ziker, PLLC (electronic only)

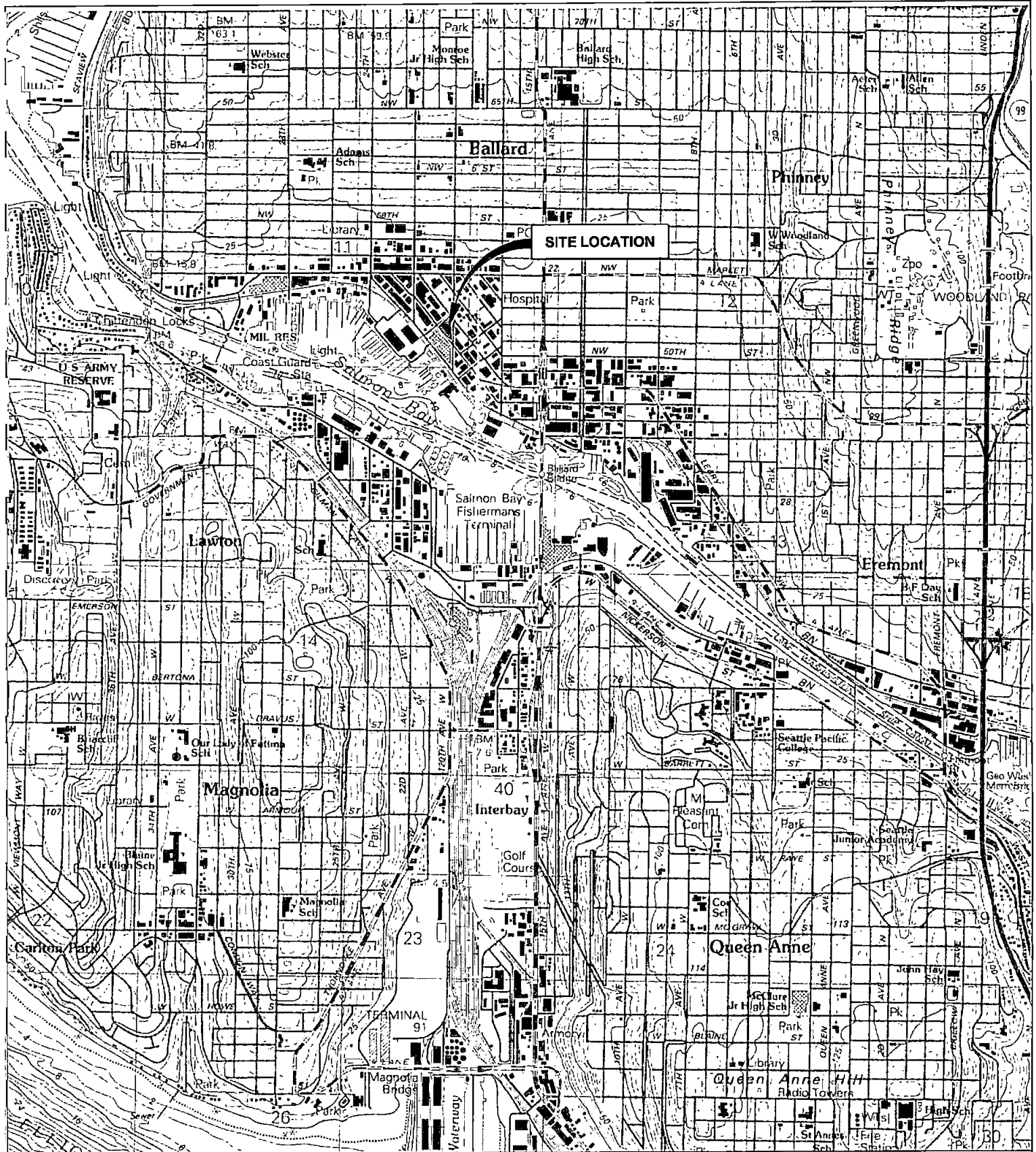
CB/PJ:bw

## **FIGURES**

### **GROUNDWATER MONITORING REPORT**

Olympic Athletic Club  
5301 Leary Avenue NW  
Seattle, Washington

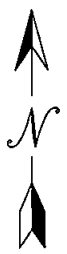
Farallon PN: 500-001



REFERENCE: 7.5 MINUTE USGS QUADRANGLE SEATTLE NORTH, WASHINGTON. DATED 1983



WASHINGTON



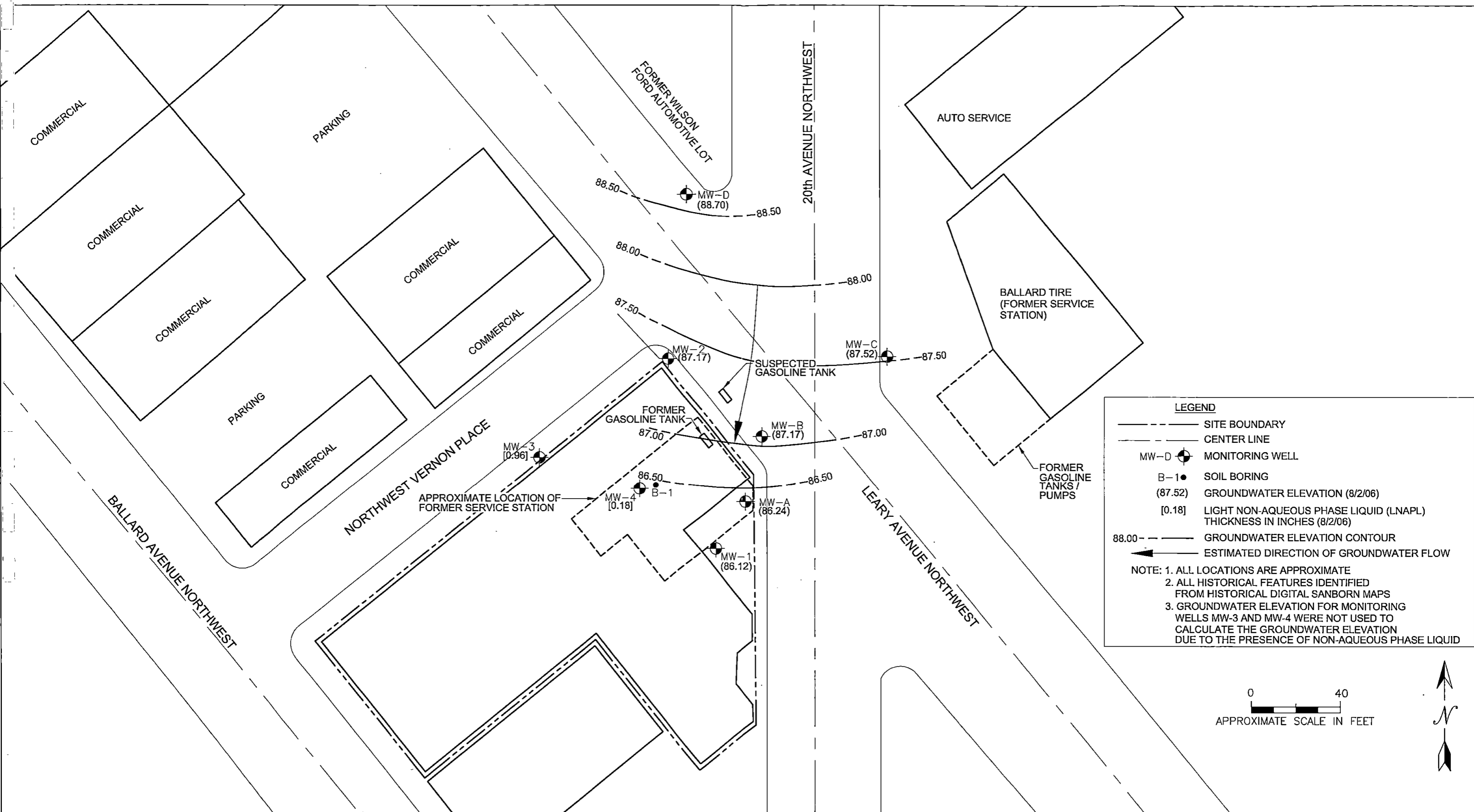
**FARALLON CONSULTING**  
975 5th Avenue Northwest  
Issaquah, WA 98027

**FIGURE 1**

SITE VICINITY MAP  
OLYMPIC ATHLETIC CLUB  
5301 LEARY AVENUE NORTHWEST  
SEATTLE, WASHINGTON

FARALLON PN: 500-001

Drawn By: CB	Checked By: DEW	Date: 8/8/06	Disk Reference: 500001
--------------	-----------------	--------------	------------------------




**LEGEND**

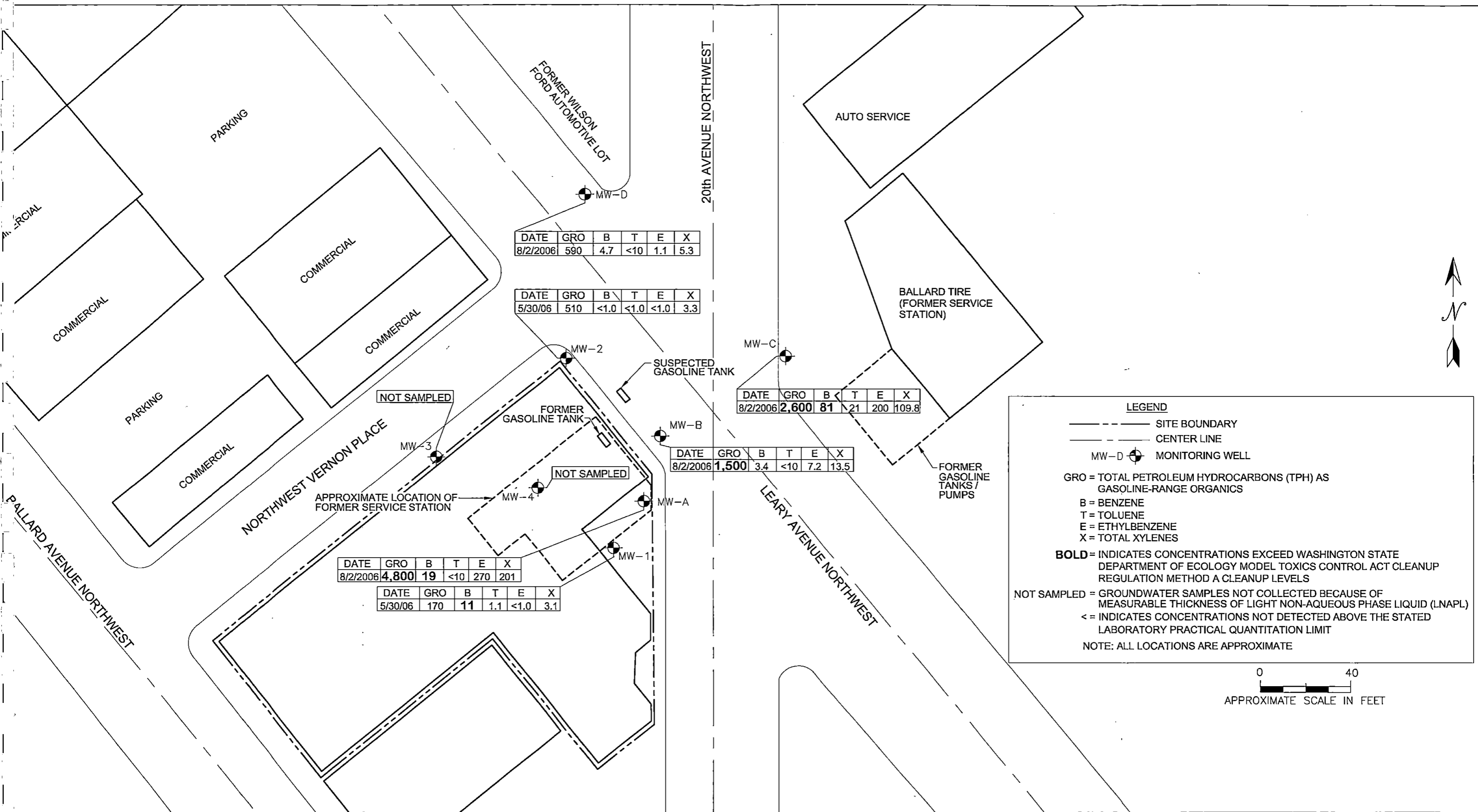
- SITE BOUNDARY
- CENTER LINE
- MW-D ● MONITORING WELL
- B-1 ● SOIL BORING
- (87.52) GROUNDWATER ELEVATION (8/2/06)
- [0.18] LIGHT NON-AQUEOUS PHASE LIQUID (LNAPL) THICKNESS IN INCHES (8/2/06)
- 88.00 --- GROUNDWATER ELEVATION CONTOUR
- ← ESTIMATED DIRECTION OF GROUNDWATER FLOW

**NOTE:**

1. ALL LOCATIONS ARE APPROXIMATE
2. ALL HISTORICAL FEATURES IDENTIFIED FROM HISTORICAL DIGITAL SANBORN MAPS
3. GROUNDWATER ELEVATION FOR MONITORING WELLS MW-3 AND MW-4 WERE NOT USED TO CALCULATE THE GROUNDWATER ELEVATION DUE TO THE PRESENCE OF NON-AQUEOUS PHASE LIQUID



 <b>FARALLON CONSULTING</b> 975 5th Avenue Northwest Issaquah, WA 98027	<b>FIGURE 2</b> GROUNDWATER ELEVATION CONTOUR MAP AUGUST 2, 2006 OLYMPIC ATHLETIC CLUB 5301 LEARY AVENUE NORTHWEST SEATTLE, WASHINGTON FARALLON PN: 500-001	
	Drawn By: DEW	Checked By: CB



DATE	GRO	B	T	E	X
8/2/2006	590	4.7	<10	1.1	5.3

DATE	GRO	B	T	E	X
5/30/06	510	<1.0	<1.0	<1.0	3.3

DATE	GRO	B	T	E	X
8/2/2006	<b>2,600</b>	<b>81</b>	21	200	109.8

DATE	GRO	B	T	E	X
8/2/2006	<b>1,500</b>	3.4	<10	7.2	13.5

DATE	GRO	B	T	E	X
8/2/2006	<b>4,800</b>	<b>19</b>	<10	270	201

DATE	GRO	B	T	E	X
5/30/06	170	<b>11</b>	1.1	<1.0	3.1

**LEGEND**

- SITE BOUNDARY
- - - CENTER LINE
- MW-D [Symbol] MONITORING WELL

GRO = TOTAL PETROLEUM HYDROCARBONS (TPH) AS GASOLINE-RANGE ORGANICS  
 B = BENZENE  
 T = TOLUENE  
 E = ETHYLBENZENE  
 X = TOTAL XYLENES


**BOLD** = INDICATES CONCENTRATIONS EXCEED WASHINGTON STATE DEPARTMENT OF ECOLOGY MODEL TOXICS CONTROL ACT CLEANUP REGULATION METHOD A CLEANUP LEVELS

NOT SAMPLED = GROUNDWATER SAMPLES NOT COLLECTED BECAUSE OF MEASURABLE THICKNESS OF LIGHT NON-AQUEOUS PHASE LIQUID (LNAPL)

< = INDICATES CONCENTRATIONS NOT DETECTED ABOVE THE STATED LABORATORY PRACTICAL QUANTITATION LIMIT

NOTE: ALL LOCATIONS ARE APPROXIMATE





**FARALLON CONSULTING**  
 975 5th Avenue Northwest  
 Issaquah, WA 98027

**FIGURE 3**

SITE PLAN SHOWING  
 GROUNDWATER ANALYTICAL DATA  
 OLYMPIC ATHLETIC CLUB  
 5301 LEARY AVENUE NORTHWEST  
 SEATTLE, WASHINGTON

FARALLON PN: 500-001

Drawn By: DEW
Checked By: CB
Date: 10/24/06
Disk Reference: 500001

**TABLES**

**GROUNDWATER MONITORING REPORT**

Olympic Athletic Club  
5301 Leary Avenue NW  
Seattle, Washington

Farallon PN: 500-001

**Table 1**  
**Summary of Groundwater Elevation Data**  
**Olympic Athletic Club**  
**Seattle, Washington**  
**Farallon PN: 500-001**

Well Identification	Well Screened Interval (feet bgs) <sup>1</sup>	Total Well Depth (feet bgs)	Top of Casing Elevation <sup>2</sup>	Date Measured	Depth to Water (feet) <sup>3</sup>	Depth to LNAPL (feet) <sup>3</sup>	LNAPL Thickness (feet)	Groundwater Elevation <sup>2</sup>
MW-1	12-22	22	98.95	5/30/2006	13.20	NP	NP	85.75
				8/2/2006	12.83	NP	NP	86.12
MW-2	11.2-21.2	21.2	101.63	5/30/2006	14.63	NP	NP	87
				8/2/2006	14.46	NP	NP	87.17
MW-3	9-19	19	99.17	5/30/2006	14.76	13.94	0.82	NA
				8/2/2006	15.49	14.53	0.96	NA
MW-4	10.1-25	25	99.47	5/30/2006	13.47	13.43	0.04	NA
				8/2/2006	14.2	14.02	0.18	NA
MW-A	Unknown	19.63	99.69	8/2/2006	13.45	NP	NP	86.24
MW-B	Unknown	19.72	101.09	8/2/2006	13.92	NP	NP	87.17
MW-C	Unknown	27.8	103.28	8/2/2006	15.76	NP	NP	87.52
MW-D	Unknown	21.61	104.38	8/2/2006	15.68	NP	NP	88.7

**NOTES:**

<sup>1</sup>Screened interval in feet below ground surface (bgs).

<sup>2</sup>Elevations as surveyed to a 100-foot project datum by Farallon Consulting on August 2, 2006.

<sup>3</sup>Depth to water/LNAPL measured in feet below the top of the well casing.

bgs = below ground surface

LNAPL = light nonaqueous-phase liquid

NA = not applicable

NP = no measurable product

**Table 2**  
**Summary of Groundwater Analytical Results**  
**Olympic Athletic Club**  
**Seattle, Washington**  
**Farallon PN: 500-001**

Monitoring Well Identification	Date Sampled	Groundwater Analytical Results (micrograms per liter)							
		<del>GRO</del> <sup>1</sup>	<del>Benzene</del> <sup>2</sup>	Toluene <sup>2</sup>	Ethylbenzene <sup>2</sup>	Xylenes <sup>2</sup>	DRO <sup>3</sup>	ORO <sup>3</sup>	<del>Dissolved Lead</del> <sup>4</sup>
MW-1	9/3/1993	680	59	3.2	19	4.4	0.66	—	—
	2/1/1994	150	14	0.93	2.2	1.4	—	—	—
	<del>5/30/2006</del>	170	<del>151</del>	1.1	<1.0	3.1	<250	<400	<1.0
MW-2	2/1/1994	770	ND	ND	ND	<3.0	—	—	—
	<del>5/30/2006</del>	510	1.7	<1.0	<1.0	3.3	<250	<400	<1.0
MW-3	2/1/1994	<b>21,000</b>	<40	<10	710	<b>3,500</b>	—	—	—
	<del>5/30/2006</del>	Monitoring well not sampled because of the presence of LNAPL							
MW-4	2/1/1994	<b>7,900</b>	<b>260</b>	<4.0	570	220	—	—	—
	<del>5/30/2006</del>	Monitoring well not sampled because of the presence of LNAPL							
MW-A	<del>8/2/2006</del>	<del><b>4,800</b></del>	<del><b>19</b></del>	<10	270	201	<250	<400	1.9
MW-B	<del>8/2/2006</del>	<del><b>1,500</b></del>	3.4	<10	7.2	13.5	<260	<420	<1.0
MW-C	<del>8/2/2006</del>	<del><b>2,600</b></del>	<del><b>81</b></del>	21	200	109.8	<250	<400	<1.0
MW-D	<del>8/2/2006</del>	590	4.7	<10	1.1	5.3	<250	<410	<1.0
<b>MTCA Method A Cleanup Levels<sup>5</sup></b>		<del><b>800</b></del>	<del><b>5</b></del>	<b>1,000</b>	<b>700</b>	<b>1,000</b>	<b>500</b>	<b>500</b>	<del><b>15</b></del>

**NOTE:**

Results in **BOLD** denote concentrations are at or above the Washington State Department of Ecology Model Toxics Control Act Cleanup Regulation (MTCA) Method A cleanup levels.

< - Indicates concentrations not detected above the stated laboratory method reporting limit.

<sup>1</sup>Analyzed by Northwest Method NWTPH-Gx.

<sup>2</sup>Analyzed by U.S. Environmental Protection Agency (EPA) Method 8021B.

<sup>3</sup>Analyzed by Northwest Method NWTPH-Dx.

<sup>4</sup>Analyzed by EPA Method 200.8.

<sup>5</sup>MTCA Method A Cleanup Levels for Ground Water, Table 720-1 of Chapter 173-340 of the Washington Administrative Code, Amended February 12, 2001.

— = not analyzed

DRO = diesel-range organics

~~GRO~~ = gasoline-range organics

LNAPL = light nonaqueous-phase liquid

ND = not detected above the laboratory detection limits

ORO = heavy oil-range organics

**ATTACHMENT A  
LABORATORY ANALYTICAL RESULTS**

**GROUNDWATER MONITORING REPORT**  
Olympic Athletic Club  
5301 Leary Avenue NW  
Seattle, Washington

Farallon PN: 500-001



14648 NE 95<sup>th</sup> Street, Redmond, WA 98052 • (425) 883-3881

June 7, 2006

Carla Brock  
Farallon Consulting, LLC  
320 3<sup>rd</sup> Avenue NE, Suite 200  
Issaquah, WA 98027

Re: Analytical Data for Project 500-001  
Laboratory Reference No. 0605-192

Dear Carla:

Enclosed are the analytical results and associated quality control data for samples submitted on May 30, 2006.

The standard policy of OnSite Environmental Inc. is to store your samples for 30 days from the date of receipt. If you require longer storage, please contact the laboratory.

We appreciate the opportunity to be of service to you on this project. If you have any questions concerning the data, or need additional information, please feel free to call me.

Sincerely,

A handwritten signature in black ink, appearing to read 'DB', with a long horizontal stroke extending to the right.

David Baumeister  
Project Manager

Enclosures

---

OnSite Environmental, Inc. 14648 NE 95<sup>th</sup> Street, Redmond, WA 98052 (425) 883-3881.

This report pertains to the samples analyzed in accordance with the chain of custody, and is intended only for the use of the individual or company to whom it is addressed.

Date of Report: June 7, 2006  
Samples Submitted: May 30, 2006  
Laboratory Reference: 0605-192  
Project: 500-001

### Case Narrative

Samples were collected on May 30, 2006 and received by the laboratory on May 30, 2006. They were maintained at the laboratory at a temperature of 2°C to 6°C except as noted below.

General QA/QC issues associated with the analytical data enclosed in this laboratory report will be indicated with a reference to a comment or explanation on the Data Qualifier page. More complex and involved QA/QC issues will be discussed in detail below.

Date of Report: June 7, 2006  
 Samples Submitted: May 30, 2006  
 Laboratory Reference: 0605-192  
 Project: 500-001

**NWTPH-Gx/BTEX**

Date Extracted: 6-5-06  
 Date Analyzed: 6-5-06

Matrix: Water  
 Units: ug/L (ppb)

Client ID: **MW2-053006** **MW1-053006**  
 Lab ID: 05-192-01 05-192-02

	<b>Result</b>	<b>Flags</b>	<b>PQL</b>	<b>Result</b>	<b>Flags</b>	<b>PQL</b>
Benzene	<b>1.7</b>		1.0	<b>11</b>		1.0
Toluene	<b>ND</b>		1.0	<b>1.1</b>		1.0
Ethyl Benzene	<b>ND</b>		1.0	<b>ND</b>		1.0
m,p-Xylene	<b>3.3</b>		1.0	<b>3.1</b>		1.0
o-Xylene	<b>ND</b>		1.0	<b>ND</b>		1.0
TPH-Gas	<b>510</b>		100	<b>170</b>		100
Surrogate Recovery:						
Fluorobenzene	101%			103%		

Date of Report: June 7, 2006  
Samples Submitted: May 30, 2006  
Laboratory Reference: 0605-192  
Project: 500-001

**NWTPH-Gx/BTEX  
METHOD BLANK QUALITY CONTROL**

Date Extracted: 6-5-06  
Date Analyzed: 6-5-06

Matrix: Water  
Units: ug/L (ppb)

Lab ID: MB0605W1

	<b>Result</b>	<b>Flags</b>	<b>PQL</b>
Benzene	<b>ND</b>		1.0
Toluene	<b>ND</b>		1.0
Ethyl Benzene	<b>ND</b>		1.0
m,p-Xylene	<b>ND</b>		1.0
o-Xylene	<b>ND</b>		1.0
TPH-Gas	<b>ND</b>		100
Surrogate Recovery: Fluorobenzene	101%		

Date of Report: June 7, 2006  
 Samples Submitted: May 30, 2006  
 Laboratory Reference: 0605-192  
 Project: 500-001

**NWTPH-Gx/BTEX  
 DUPLICATE QUALITY CONTROL**

Date Extracted: 6-5-06  
 Date Analyzed: 6-5-06

Matrix: Water  
 Units: ug/L (ppb)

Lab ID:	05-192-01 Original	05-192-01 Duplicate	RPD	Flags
Benzene	1.71	1.72	1	
Toluene	ND	ND	NA	
Ethyl Benzene	ND	ND	NA	
m,p-Xylene	3.30	3.30	0	
o-Xylene	ND	ND	NA	
TPH-Gas	513	513	0	
Surrogate Recovery:				
Fluorobenzene	101%	98%		

Date of Report: June 7, 2006  
 Samples Submitted: May 30, 2006  
 Laboratory Reference: 0605-192  
 Project: 500-001

**NWTPH-Gx/BTEX  
 MS/MSD QUALITY CONTROL**

Date Extracted: 6-5-06  
 Date Analyzed: 6-5-06

Matrix: Water  
 Units: ug/L (ppb)

Spike Level: 50.0 ppb

Lab ID:	05-192-01 MS	Percent Recovery	05-192-01 MSD	Percent Recovery	RPD	Flags
Benzene	56.6	110	54.7	106	3	
Toluene	55.2	110	53.8	108	3	
Ethyl Benzene	58.6	117	57.4	115	2	
m,p-Xylene	58.8	111	57.4	108	2	
o-Xylene	54.8	110	53.5	107	3	
Surrogate Recovery: Fluorobenzene	98%		99%			

Date of Report: June 7, 2006  
 Samples Submitted: May 30, 2006  
 Laboratory Reference: 0605-192  
 Project: 500-001

**NWTPH-Dx**

Date Extracted: 5-31-06  
 Date Analyzed: 5-31-06

Matrix: Water  
 Units: mg/L (ppm)

<b>Client ID:</b>	<b>MW2-053006</b>	<b>MW1-053006</b>
<b>Lab ID:</b>	<b>05-192-01</b>	<b>05-192-02</b>

Diesel Range:	<b>ND</b>	<b>ND</b>
PQL:	0.25	0.25
Identification:	---	---

Lube Oil Range:	<b>ND</b>	<b>ND</b>
PQL:	0.40	0.40
Identification:	---	---

Surrogate Recovery o-Terphenyl:	77%	70%
------------------------------------	-----	-----

Flags:	Y	Y
--------	---	---

Date of Report: June 7, 2006  
Samples Submitted: May 30, 2006  
Laboratory Reference: 0605-192  
Project: 500-001

**NWTPH-Dx  
METHOD BLANK QUALITY CONTROL**

Date Extracted: 5-31-06  
Date Analyzed: 5-31-06

Matrix: Water  
Units: mg/L (ppm)

Lab ID: MB0531W1

Diesel Range: ND

PQL: 0.25

Identification: ---

Lube Oil Range: ND

PQL: 0.40

Identification: ---

Surrogate Recovery

o-Terphenyl: 75%

Flags: Y

Date of Report: June 7, 2006  
Samples Submitted: May 30, 2006  
Laboratory Reference: 0605-192  
Project: 500-001

**NWTPH-Dx  
DUPLICATE QUALITY CONTROL**

Date Extracted: 5-31-06  
Date Analyzed: 5-31-06

Matrix: Water  
Units: mg/L (ppm)

Lab ID: 05-192-01 05-192-01 DUP

Diesel Range: ND ND  
PQL: 0.25 0.25

RPD: N/A

Surrogate Recovery  
o-Terphenyl: 77% 70%

Flags: Y Y

Date of Report: June 7, 2006  
Samples Submitted: May 30, 2006  
Laboratory Reference: 0605-192  
Project: 500-001

**DISSOLVED LEAD  
EPA 200.8**

Date Filtered: 6-1-06  
Date Analyzed: 6-6-06  
  
Matrix: Water  
Units: ug/L (ppb)

Client ID	Lab ID	Result	PQL
MW2-053006	05-192-01	ND	1.0
MW1-053006	05-192-02	ND	1.0

Date of Report: June 7, 2006  
Samples Submitted: May 30, 2006  
Laboratory Reference: 0605-192  
Project: 500-001

**DISSOLVED LEAD  
EPA 200.8  
METHOD BLANK QUALITY CONTROL**

Date Filtered: 6-1-06  
Date Analyzed: 6-6-06  
  
Matrix: Water  
Units: ug/L (ppb)  
  
Lab ID: MB0601D2

Analyte	Method	Result	PQL
Lead	200.8	ND	1.0

Date of Report: June 7, 2006  
Samples Submitted: May 30, 2006  
Laboratory Reference: 0605-192  
Project: 500-001

**DISSOLVED LEAD  
EPA 200.8  
DUPLICATE QUALITY CONTROL**

Date Filtered: 6-1-06  
Date Analyzed: 6-6-06

Matrix: Water  
Units: ug/L (ppb)

Lab ID: 05-192-01

Analyte	Sample Result	Duplicate Result	RPD	PQL	Flags
Lead	ND	ND	NA	1.0	

Date of Report: June 7, 2006  
Samples Submitted: May 30, 2006  
Laboratory Reference: 0605-192  
Project: 500-001

**DISSOLVED LEAD  
EPA 200.8  
MS/MSD QUALITY CONTROL**

Date Filtered: 6-1-06

Date Analyzed: 6-6-06

Matrix: Water  
Units: ug/L (ppb)

Lab ID: 05-192-01

Analyte	Spike Level	MS	Percent Recovery	MSD	Percent Recovery	RPD	Flags
Lead	100	<b>101</b>	101	<b>99.8</b>	100	1	



#### Data Qualifiers and Abbreviations

A - Due to a high sample concentration, the amount spiked is insufficient for meaningful MS/MSD recovery data.

B - The analyte indicated was also found in the blank sample.

C - The duplicate RPD is outside control limits due to high result variability when analyte concentrations are within five times the quantitation limit.

E - The value reported exceeds the quantitation range and is an estimate.

F - Surrogate recovery data is not available due to the high concentration of coeluting target compounds.

G - Insufficient sample quantity for duplicate analysis.

H - The analyte indicated is a common laboratory solvent and may have been introduced during sample preparation, and be impacting the sample result.

I - Compound recovery is outside of the control limits.

J - The value reported was below the practical quantitation limit. The value is an estimate.

K - Sample duplicate RPD is outside control limits due to sample inhomogeneity. The sample was re-extracted and re-analyzed with similar results.

L - The RPD is outside of the control limits.

M - Hydrocarbons in the gasoline range (toluene-naphthalene) are present in the sample.

O - Hydrocarbons indicative of diesel fuel are present in the sample and are impacting the gasoline result.

P - The RPD of the detected concentrations between the two columns is greater than 40.

Q - Surrogate recovery is outside of the control limits.

S - Surrogate recovery data is not available due to the necessary dilution of the sample.

T - The sample chromatogram is not similar to a typical \_\_\_\_\_.

U - The analyte was analyzed for, but was not detected above the reported sample quantitation limit.

V - Matrix Spike/Matrix Spike Duplicate recoveries are outside control limits due to matrix effects.

W - Matrix Spike/Matrix Spike Duplicate RPD are outside control limits due to matrix effects.

X - Sample extract treated with a silica gel cleanup procedure.

Y - Sample extract treated with an acid/silica gel cleanup procedure.

Z -

ND - Not Detected at PQL

PQL - Practical Quantitation Limit

RPD - Relative Percent Difference



### SAMPLE CHAIN OF CUSTODY

Page # 1 of 1

Send Report To Carla F. Brock  
 Company Farallon Consulting LLC  
 Address 320 3rd Ave NE  
 City, State, ZIP Issaquah WA 98027  
 Phone # (425) 427-0061 Fax # (425) 427-0061

SAMPLERS (signature) <u>Ken Smith</u>	
PROJECT NAME/NO. <u>Olympic Athletic Club</u> <u>500-001</u>	PO # <u>500-001</u>
REMARKS <u>Attn: Kurt</u>	

<b>TURNAROUND TIME</b>	
<input checked="" type="checkbox"/> Standard (2 Weeks)	
<input type="checkbox"/> RUSH	
Rush charges authorized by: _____	
<b>SAMPLE DISPOSAL</b>	
<input checked="" type="checkbox"/> Dispose after 30 days	
<input type="checkbox"/> Return samples	
<input type="checkbox"/> Will call with instructions	

Sample ID	Lab ID	Date	Time	Sample Type	# of containers	ANALYSES REQUESTED										Notes									
						TPH-Diesel	TPH-Gasoline	BTEX by 8021B	VOCs by 8260	SVOCs by 8270	HPS	GCED Pb/Mc	ICAMS												
MW-3-080206		8/2/06	11:15		3																				

Friedman & Bruya, Inc.  
 3012 16th Avenue West  
 Seattle, WA 98119-2029  
 Ph. (206) 285-8282  
 Fax (206) 283-5044

SIGNATURE	PRINT NAME	COMPANY	DATE	TIME
Relinquished by: <u>Carla F. Brock</u>	<u>Carla F. Brock</u>	<u>Farallon Consulting</u>	<u>8/2/06</u>	<u>0800</u>
Received by:				
Relinquished by:				
Received by:				



14648 NE 95<sup>th</sup> Street, Redmond, WA 98052 • (425) 883-3881

August 14, 2006

Carla Brock  
Farallon Consulting, LLC  
320 3<sup>rd</sup> Avenue NE, Suite 200  
Issaquah, WA 98027

Re: Analytical Data for Project 500-001  
Laboratory Reference No. 0608-031

Dear Carla:

Enclosed are the analytical results and associated quality control data for samples submitted on August 2, 2006.

The standard policy of OnSite Environmental Inc. is to store your samples for 30 days from the date of receipt. If you require longer storage, please contact the laboratory.

We appreciate the opportunity to be of service to you on this project. If you have any questions concerning the data, or need additional information, please feel free to call me.

Sincerely,

A handwritten signature in black ink, appearing to read 'DB', with a long horizontal stroke extending to the right.

David Baumeister  
Project Manager

Enclosures

---

OnSite Environmental, Inc. 14648 NE 95<sup>th</sup> Street, Redmond, WA 98052 (425) 883-3881

This report pertains to the samples analyzed in accordance with the chain of custody,  
and is intended only for the use of the individual or company to whom it is addressed.

Date of Report: August 14, 2006  
Samples Submitted: August 2, 2006  
Laboratory Reference: 0608-031  
Project: 500-001

### Case Narrative

Samples were collected on August 2, 2006 and received by the laboratory on August 2, 2006. They were maintained at the laboratory at a temperature of 2°C to 6°C except as noted below.

General QA/QC issues associated with the analytical data enclosed in this laboratory report will be indicated with a reference to a comment or explanation on the Data Qualifier page. More complex and involved QA/QC issues will be discussed in detail below.

Date of Report: August 14, 2006  
 Samples Submitted: August 2, 2006  
 Laboratory Reference: 0608-031  
 Project: 500-001

**NWTPH-Gx/BTEX**

Date Extracted: 8-8-06  
 Date Analyzed: 8-8-06

Matrix: Water  
 Units: ug/L (ppb)

Client ID: **A-080206** **B-080206**  
 Lab ID: 08-031-01 08-031-02

	<b>Result</b>	Flags	PQL	<b>Result</b>	Flags	PQL
Benzene	<b>19</b>		10	<b>3.4</b>		1.0
Toluene	<b>ND</b>		10	<b>ND</b>		1.0
Ethyl Benzene	<b>270</b>		10	<b>7.2</b>		1.0
m,p-Xylene	<b>180</b>		10	<b>12</b>		1.0
o-Xylene	<b>21</b>		10	<b>1.5</b>		1.0
TPH-Gas	<b>4800</b>		1000	<b>1500</b>		100
Surrogate Recovery:						
Fluorobenzene	<b>98%</b>			<b>100%</b>		

Date of Report: August 14, 2006  
 Samples Submitted: August 2, 2006  
 Laboratory Reference: 0608-031  
 Project: 500-001

**NWTPH-Gx/BTEX**

Date Extracted: 8-8-06  
 Date Analyzed: 8-8-06

Matrix: Water  
 Units: ug/L (ppb)

Client ID: **C-080206** **D-080206**  
 Lab ID: 08-031-03 08-031-04

	<b>Result</b>	<b>Flags</b>	<b>PQL</b>	<b>Result</b>	<b>Flags</b>	<b>PQL</b>
Benzene	81		4.0	4.7		1.0
Toluene	21		4.0	ND		1.0
Ethyl Benzene	200		4.0	1.1		1.0
m,p-Xylene	100		4.0	2.8		1.0
o-Xylene	9.8		4.0	2.5		1.0
TPH-Gas	2600		400	590		100
Surrogate Recovery:						
Fluorobenzene	107%			95%		

Date of Report: August 14, 2006  
Samples Submitted: August 2, 2006  
Laboratory Reference: 0608-031  
Project: 500-001

**NWTPH-Gx/BTEX  
METHOD BLANK QUALITY CONTROL**

Date Extracted: 8-8-06  
Date Analyzed: 8-8-06

Matrix: Water  
Units: ug/L (ppb)

Lab ID: MB0808W1

	<b>Result</b>	<b>Flags</b>	<b>PQL</b>
Benzene	<b>ND</b>		1.0
Toluene	<b>ND</b>		1.0
Ethyl Benzene	<b>ND</b>		1.0
m,p-Xylene	<b>ND</b>		1.0
o-Xylene	<b>ND</b>		1.0
TPH-Gas	<b>ND</b>		100
Surrogate Recovery: Fluorobenzene	85%		

Date of Report: August 14, 2006  
 Samples Submitted: August 2, 2006  
 Laboratory Reference: 0608-031  
 Project: 500-001

**NWTPH-Gx/BTEX  
 DUPLICATE QUALITY CONTROL**

Date Extracted: 8-8-06  
 Date Analyzed: 8-8-06

Matrix: Water  
 Units: ug/L (ppb)

Lab ID:	08-031-04 Original	08-031-04 Duplicate	RPD	Flags
Benzene	4.70	4.46	5	
Toluene	ND	ND	NA	
Ethyl Benzene	1.12	1.29	15	
m,p-Xylene	2.83	2.72	4	
o-Xylene	2.51	3.01	18	
TPH-Gas	591	691	16	
Surrogate Recovery: Fluorobenzene	95%	95%		

Date of Report: August 14, 2006  
 Samples Submitted: August 2, 2006  
 Laboratory Reference: 0608-031  
 Project: 500-001

**NWTPH-Gx/BTEX  
 MS/MSD QUALITY CONTROL**

Date Extracted: 8-8-06  
 Date Analyzed: 8-8-06

Matrix: Water  
 Units: ug/L (ppb)

Spike Level: 50.0 ppb

Lab ID:	08-031-04 MS	Percent Recovery	08-031-04 MSD	Percent Recovery	RPD	Flags
Benzene	52.9	96	52.6	96	0	
Toluene	49.6	99	54.1	108	9	W
Ethyl Benzene	53.0	104	52.9	104	0	
m,p-Xylene	50.0	94	50.0	94	0	
o-Xylene	49.2	93	48.2	91	2	

Surrogate Recovery:  
 Fluorobenzene 97% 94%

Date of Report: August 14, 2006  
 Samples Submitted: August 2, 2006  
 Laboratory Reference: 0608-031  
 Project: 500-001

**NWTPH-Dx**

Date Extracted: 8-7-06  
 Date Analyzed: 8-7-06

Matrix: Water  
 Units: mg/L (ppm)

<b>Client ID:</b>	<b>A-080206</b>	<b>B-080206</b>	<b>C-080206</b>
Lab ID:	08-031-01	08-031-02	08-031-03
Diesel Range:	<b>ND</b>	<b>ND</b>	<b>ND</b>
PQL:	0.25	0.26	0.25
Identification:	---	---	---
Lube Oil Range:	<b>ND</b>	<b>ND</b>	<b>ND</b>
PQL:	0.40	0.42	0.40
Identification:	---	---	---
Surrogate Recovery			
o-Terphenyl:	97%	105%	108%
Flags:	Y	Y	Y

Date of Report: August 14, 2006  
Samples Submitted: August 2, 2006  
Laboratory Reference: 0608-031  
Project: 500-001

**NWTPH-Dx**

Date Extracted: 8-7-06  
Date Analyzed: 8-7-06

Matrix: Water  
Units: mg/L (ppm)

Client ID: D-080206  
Lab ID: 08-031-04

Diesel Range: ND  
PQL: 0.25  
Identification: ---

Lube Oil Range: ND  
PQL: 0.41  
Identification: ---

Surrogate Recovery  
o-Terphenyl: 100%

Flags: Y

Date of Report: August 14, 2006  
Samples Submitted: August 2, 2006  
Laboratory Reference: 0608-031  
Project: 500-001

**NWTPH-Dx  
METHOD BLANK QUALITY CONTROL**

Date Extracted: 8-7-06  
Date Analyzed: 8-7-06

Matrix: Water  
Units: mg/L (ppm)

Lab ID: MB0807W1

Diesel Range: **ND**

PQL: 0.25

Identification: ---

Lube Oil Range: **ND**

PQL: 0.40

Identification: ---

Surrogate Recovery

o-Terphenyl: 99%

Flags: Y

Date of Report: August 14, 2006  
Samples Submitted: August 2, 2006  
Laboratory Reference: 0608-031  
Project: 500-001

**NWTPH-Dx  
DUPLICATE QUALITY CONTROL**

Date Extracted: 8-7-06  
Date Analyzed: 8-7-06

Matrix: Water  
Units: mg/L (ppm)

Lab ID: 08-031-01 08-031-01 DUP

Diesel Range: ND ND  
PQL: 0.25 0.25

RPD: N/A

Surrogate Recovery  
o-Terphenyl: 97% 90%

Flags: Y Y

Date of Report: August 14, 2006  
Samples Submitted: August 2, 2006  
Laboratory Reference: 0608-031  
Project: 500-001

**DISSOLVED LEAD  
EPA 200.8**

Date Filtered: 8-3-06  
Date Analyzed: 8-8-06  
  
Matrix: Water  
Units: ug/L (ppb)

Client ID	Lab ID	Result	PQL
A-080206	08-031-01	1.9	1.0
B-080206	08-031-02	ND	1.0
C-080206	08-031-03	ND	1.0
D-080206	08-031-04	ND	1.0

Date of Report: August 14, 2006  
Samples Submitted: August 2, 2006  
Laboratory Reference: 0608-031  
Project: 500-001

**DISSOLVED LEAD  
EPA 200.8  
METHOD BLANK QUALITY CONTROL**

Date Filtered: 8-3-06  
Date Analyzed: 8-8-06  
  
Matrix: Water  
Units: ug/L (ppb)  
  
Lab ID: MB0803D1

Analyte	Method	Result	PQL
Lead	200.8	ND	1.0

Date of Report: August 14, 2006  
Samples Submitted: August 2, 2006  
Laboratory Reference: 0608-031  
Project: 500-001

**DISSOLVED LEAD  
EPA 200.8  
DUPLICATE QUALITY CONTROL**

Date Filtered: 8-3-06  
Date Analyzed: 8-8-06

Matrix: Water  
Units: ug/L (ppb)

Lab ID: 08-065-03

Analyte	Sample Result	Duplicate Result	RPD	PQL	Flags
Lead	ND	ND	NA	1.0	

Date of Report: August 14, 2006  
Samples Submitted: August 2, 2006  
Laboratory Reference: 0608-031  
Project: 500-001

**DISSOLVED LEAD  
EPA 200.8  
MS/MSD QUALITY CONTROL**

Date Filtered: 8-3-06

Date Analyzed: 8-8-06

Matrix: Water  
Units: ug/L (ppb)

Lab ID: 08-065-03

Analyte	Spike Level	MS	Percent Recovery	MSD	Percent Recovery	RPD	Flags
Lead	200	200	100	201	100	0	



#### Data Qualifiers and Abbreviations

A - Due to a high sample concentration, the amount spiked is insufficient for meaningful MS/MSD recovery data.

B - The analyte indicated was also found in the blank sample.

C - The duplicate RPD is outside control limits due to high result variability when analyte concentrations are within five times the quantitation limit.

E - The value reported exceeds the quantitation range and is an estimate.

F - Surrogate recovery data is not available due to the high concentration of coeluting target compounds.

G - Insufficient sample quantity for duplicate analysis.

H - The analyte indicated is a common laboratory solvent and may have been introduced during sample preparation, and be impacting the sample result.

I - Compound recovery is outside of the control limits.

J - The value reported was below the practical quantitation limit. The value is an estimate.

K - Sample duplicate RPD is outside control limits due to sample inhomogeneity. The sample was re-extracted and re-analyzed with similar results.

L - The RPD is outside of the control limits.

M - Hydrocarbons in the gasoline range (toluene-naphthalene) are present in the sample.

O - Hydrocarbons indicative of diesel fuel are present in the sample and are impacting the gasoline result.

P - The RPD of the detected concentrations between the two columns is greater than 40.

Q - Surrogate recovery is outside of the control limits.

S - Surrogate recovery data is not available due to the necessary dilution of the sample.

T - The sample chromatogram is not similar to a typical \_\_\_\_\_.

U - The analyte was analyzed for, but was not detected above the reported sample quantitation limit.

V - Matrix Spike/Matrix Spike Duplicate recoveries are outside control limits due to matrix effects.

W - Matrix Spike/Matrix Spike Duplicate RPD are outside control limits due to matrix effects.

X - Sample extract treated with a silica gel cleanup procedure.

Y - Sample extract treated with an acid/silica gel cleanup procedure.

Z -

ND - Not Detected at PQL

PQL - Practical Quantitation Limit

RPD - Relative Percent Difference



**OnSite Environmental Inc.**  
 14848 NE 95th Street • Redmond, WA 98052  
 Phone: (425) 883-3881 • Fax: (425) 885-4603

# Chain of Custody

Laboratory Number: **08-031**

**Requested Analysis**

NWTPH-HCID	NWTPH-Gx/BTEX	NWTPH-Dx	Volatiles by 8260B	Halogenated Volatiles by 8260B	Semivolatiles by 8270C	PAHs by 8270C / SIM	PCBs by 8082	Pesticides by 8081A	Herbicides by 8151A	Total RCRA Metals (8)	TCLP Metals	HEM by 1664	VPH	EPH	% Moisture
	X	X												X	
	X	X												X	
	X	X												X	
	X	X												X	

200.8  
 EPA metals  
 DISSOLVED LEAD

Company: **FARALLON**  
 Project Number: **500-001**  
 Project Name: **Olympic Athletic Club**  
 Project Manager: **CARLA BROCK**  
 Sampled by: *Ken Smith*

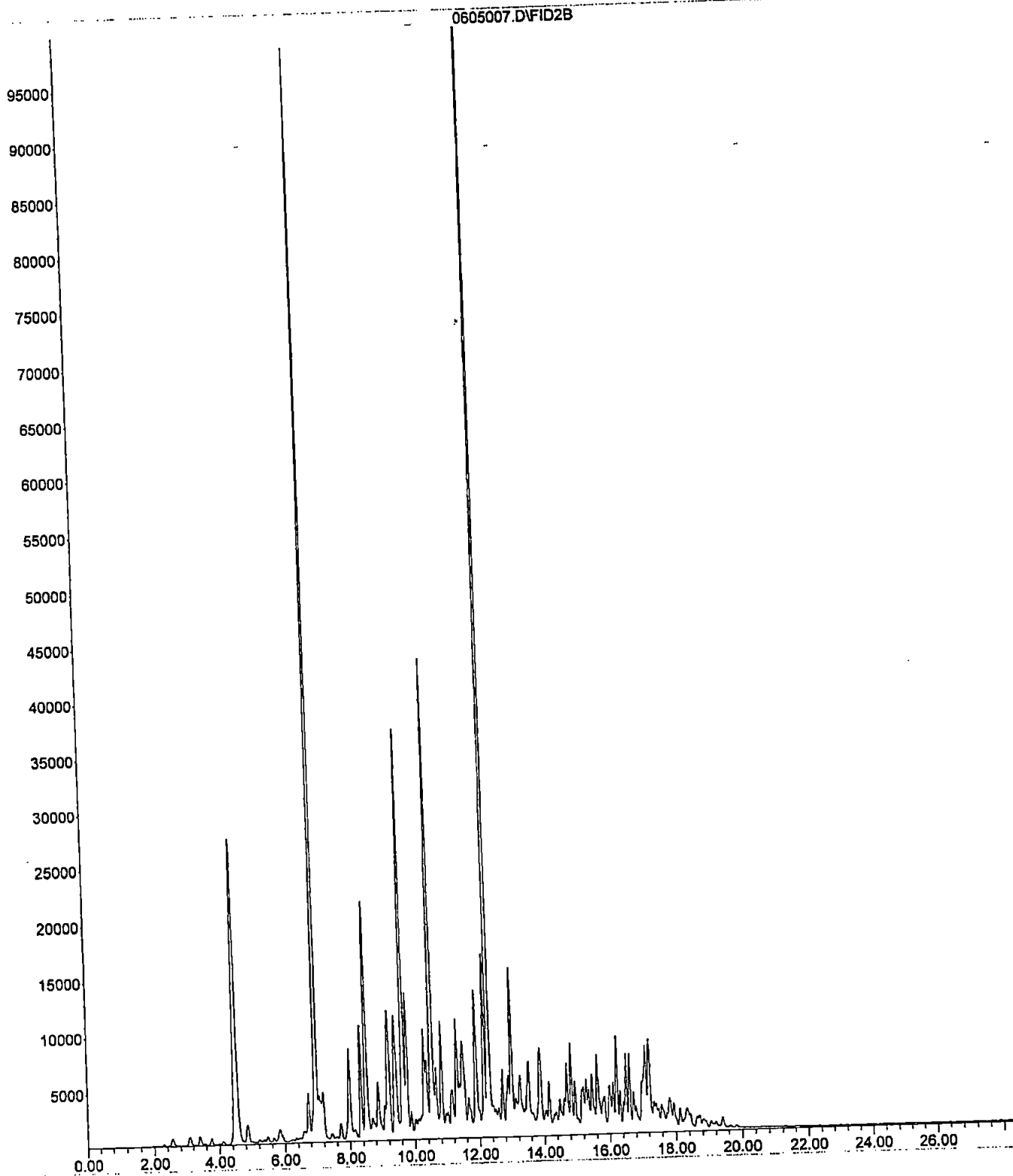
Turnaround Request (in working days)  
 (Check One)  
 Same Day     1 Day  
 2 Day         3 Day  
 Standard (7 working days)  
 (TPH analysis 5 working days)  
 \_\_\_\_\_ (other)

Lab ID	Sample Identification	Date Sampled	Time Sampled	Matrix	# of Cont.
1	A-080206	8/2/06	12:20	W	6
2	B-080206	↓	13:10	W	6
3	C-080206	↓	13:55	W	6
4	D-080206	↓	14:50	W	6

Signature	Company	Date	Time	Comments/Special Instructions:
<i>Ken Smith</i>	FARALLON	8/2/06	17:40	Please field filter the dissolved lead samples immediately.
<i>[Signature]</i>	OnSite Env	8/2/06	17:40	
Reviewed by/Date	Reviewed by/Date	Chromatograms with final report <input type="checkbox"/>		

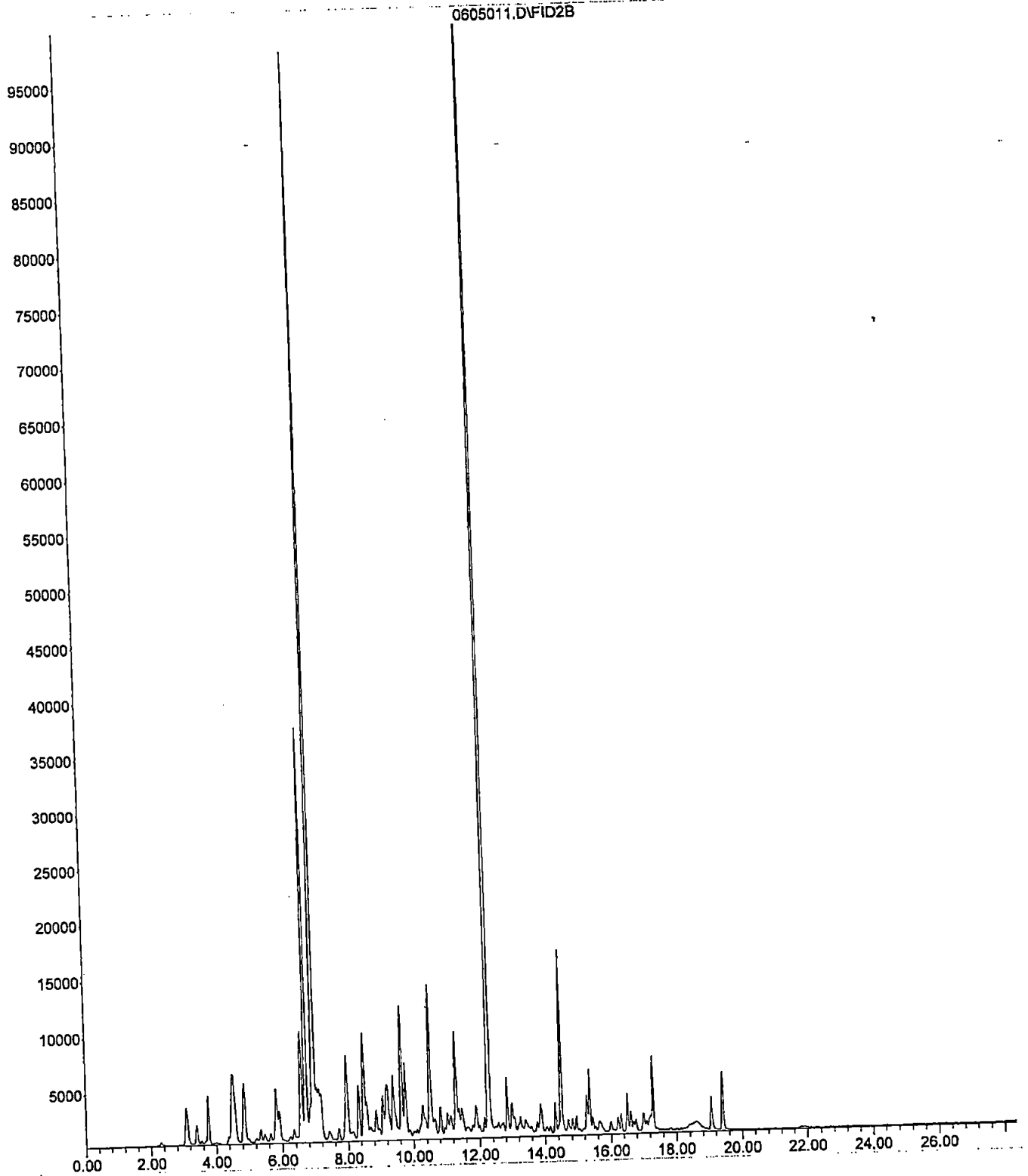
File : X:\BTEX\DARYL\DATA\D060605\0605007.D  
Operator :  
Acquired : 5 Jun 2006 19:19 using AcqMethod 602BTX.M  
Instrument : BTEX  
Sample Name: 05-192-01b  
Misc Info :  
Vial Number: 7

MW2-053006



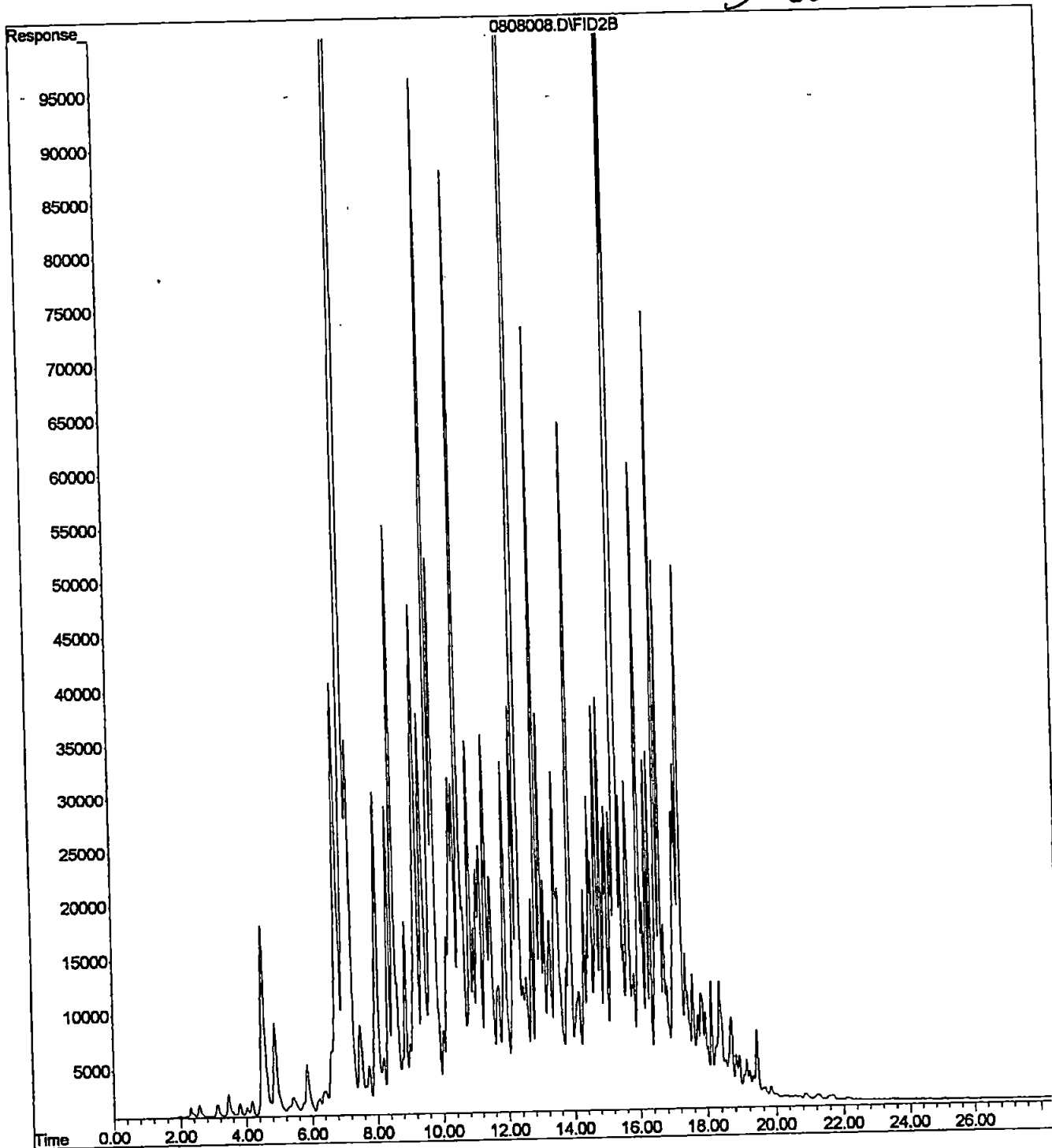
File : X:\BTEX\DARYL\DATA\D060605\0605011.D  
Operator :  
Acquired : 5 Jun 2006 21:38 using AcqMethod 602BTX.M  
Instrument : BTEX  
Sample Name: 05-192-02b  
Misc Info :  
Vial Number: 11

MW1-053006



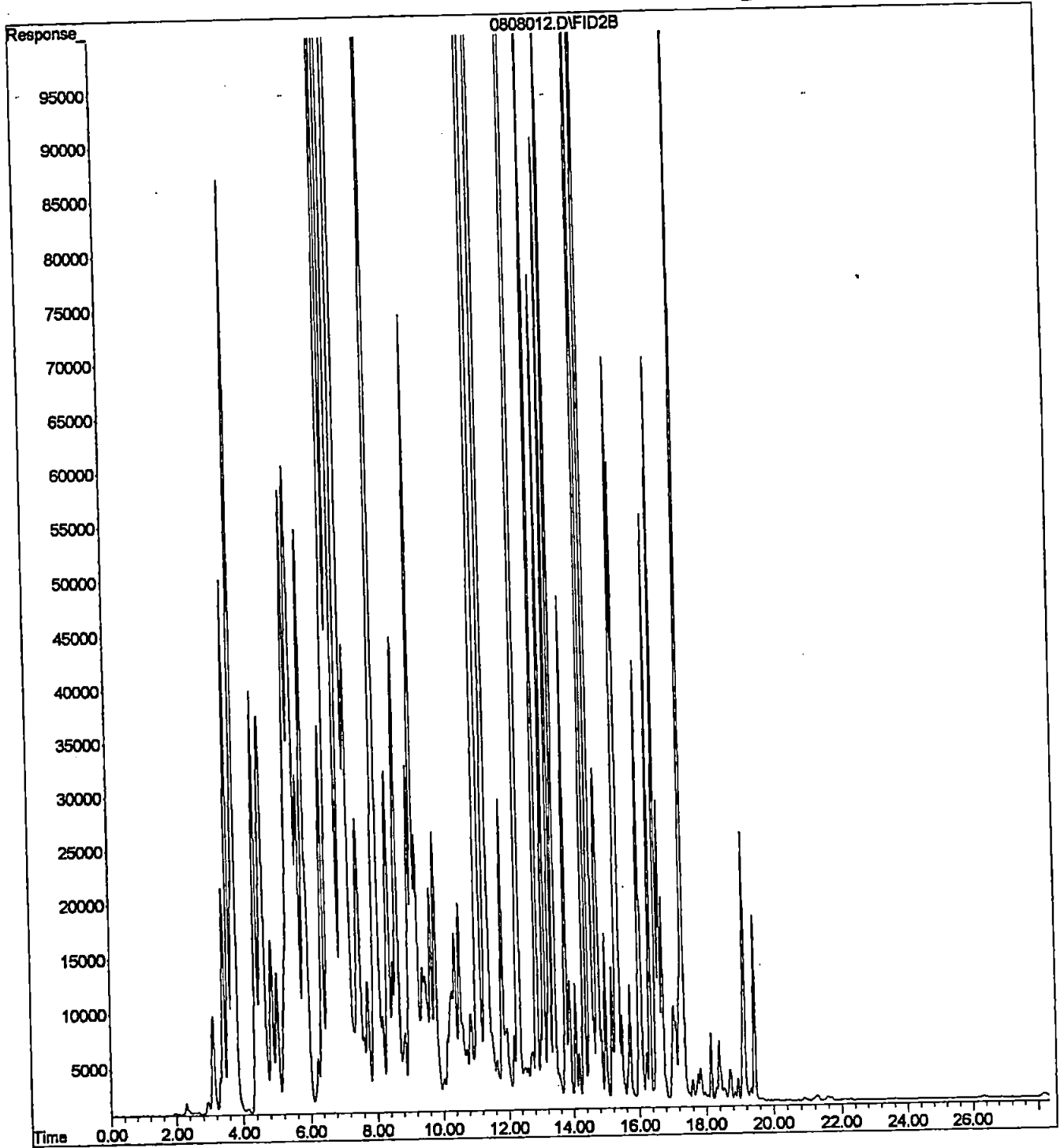
File : X:\BTEX\DARYL\DATA\D060808\0808008.D  
Operator :  
Acquired : 8 Aug 2006 17:00 using AcqMethod 060731B.M  
Instrument : Daryl  
Sample Name: 08-031-04d  
Misc Info :  
Vial Number: 8

D-080206



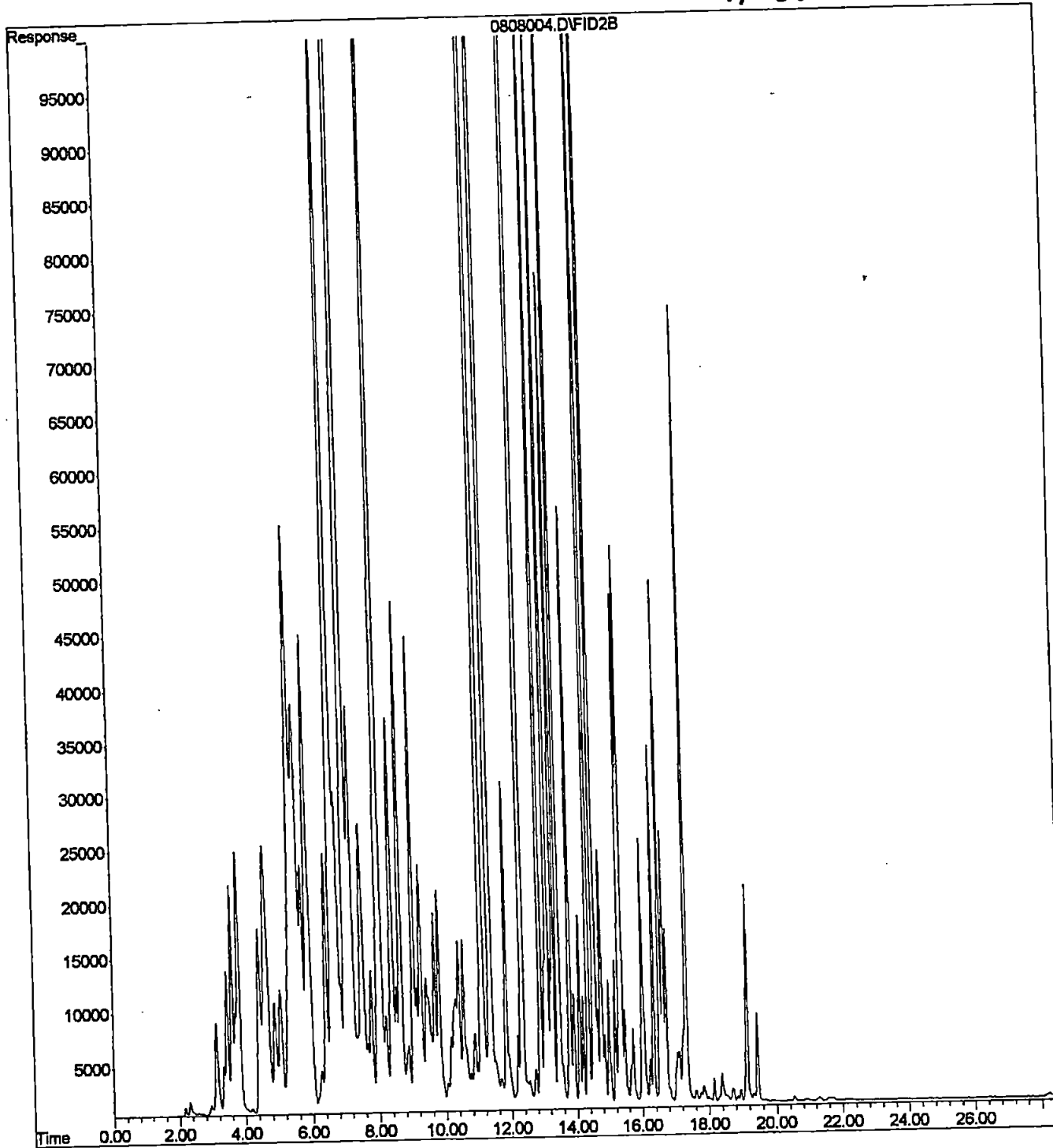
File : X:\BTEX\DARYL\DATA\D060808\0808012.D  
Operator :  
Acquired : 8 Aug 2006 19:19 using AcqMethod 060731B.M  
Instrument : Daryl  
Sample Name: 08-031-03d 1:4  
Misc Info :  
Vial Number: 12

C-080206



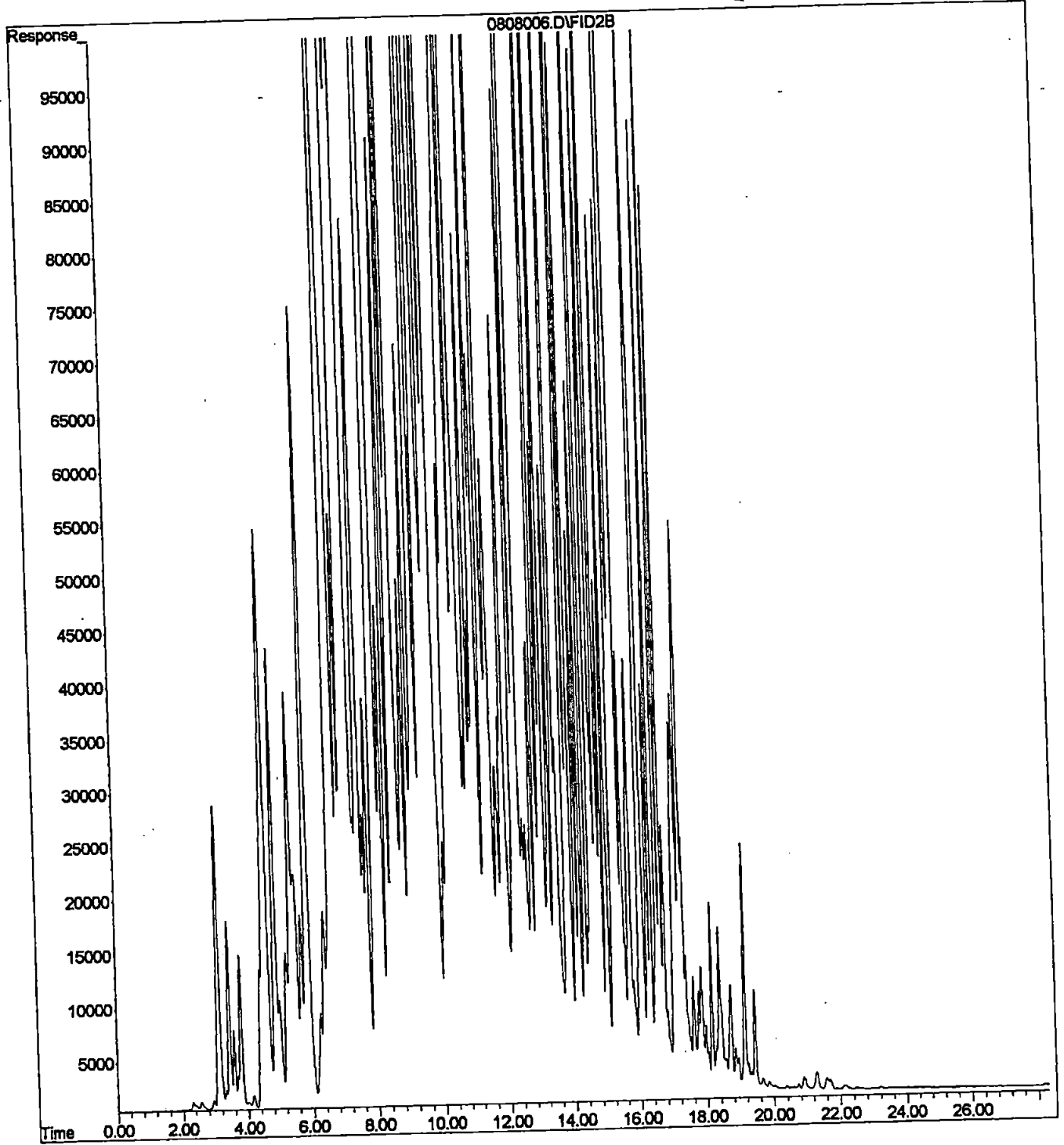
File : X:\BTEX\DARYL\DATA\D060808\0808004.D  
Operator :  
Acquired : 8 Aug 2006 14:12 using AcqMethod 060731B.M  
Instrument : Daryl  
Sample Name: 08-031-01d 1:10  
Misc Info :  
Vial Number: 4

A-080206



File : X:\BTEX\DARYL\DATA\D060808\0808006.D  
Operator :  
Acquired : 8 Aug 2006 15:51 using AcqMethod 060731B.M  
Instrument : Daryl  
Sample Name: 08-031-02d rr  
Misc Info :  
Vial Number: 6

B-080206





# Chain of Custody

Laboratory Number: **05-192**

Company: **FARAWAY CONSULTING**  
 Project Number: **500-001**  
 Project Name: **OLYMPIC ATHLETIC**  
 Project Manager: **C. BROCK**  
 Sampled by: **A. MARINE**

Turnaround Request (In working days)  
 (Check One)  
 Same Day     1 Day  
 2 Day        3 Day  
 Standard (7 working days) (TPH analysis 5 working days)  
 (other)

Requested Analysis

Lab ID	Sample Identification	Date Sampled	Time Sampled	Matrix	# of Cont.	NWTPH-HCID	NWTPH-GV/BTEX	NWTPH-Dx	Volatiles by 8260B	Halogenated Volatiles by 8260B	Semivolatiles by 8270C	PAHs by 8270C / SIM	PCBs by 8082	Pesticides by 8081A	Herbicides by 8151A	Total RCRA Metals (8)	TCLP Metals	HEM by 1664	VPH	EPH	% Moisture	
1	MWZ-053006	5/30/06	1230	W	6	X	X															
2	MW1-053006	↓	1350	W	6	X	X															

DESOLVED LEAD

Signature	Company	Date	Time	Comments/Special Instructions:
<i>A. Marine</i>	FARAWAY	5/30/06	1520	
<i>[Signature]</i>	OSI	5/30/06	1520	
Reviewed by/Date	Reviewed by/Date	Chromatograms with final report <input type="checkbox"/>		



**OnSite Environmental Inc.**  
 14848 NE 85th Street • Redmond, WA 98052  
 Phone: (425) 883-3881 • Fax: (425) 885-4803

# Chain of Custody

Laboratory Number: **08-031**

Company: **FARALLON**  
 Project Number: **500-001**  
 Project Name: **Olympic Athletic Club**  
 Project Manager: **CARLA BROCK**  
 Sampled by: **Ken Smith**

Turnaround Request  
(in working days)

(Check One)

Same Day       1 Day  
 2 Day           3 Day  
 Standard (7 working days)  
 (TPH analysis 5 working days)  
 \_\_\_\_\_  
 (other)

**Requested Analysis**

Lab ID	Sample Identification	Date Sampled	Time Sampled	Matrix	# of Cont.	NWTPH-HCID	NWTPH-GxBTEX	NWTPH-Dx	Volatiles by 8260B	Halogenated Volatiles by 8260B	Semivolatiles by 8270C	PAHs by 8270C / SIM	PCBs by 8082	Pesticides by 8081A	Herbicides by 8151A	Total FCRA Metals (8)	TCLP Metals	HEM by 1664	VPH	EPH	EPA metals by 8260B	Dissolved Lead	% Moisture
1	A-080206	8/2/06	12:20	W	6	X	X	X													X		
2	B-080206		13:10	W	6	X	X	X													X		
3	C-080206		13:55	W	6	X	X	X													X		
4	D-080206	✓	14:50	W	6	X	X	X													X		

Signature	Company	Date	Time	Comments/Special Instructions:
Relinquished by: <i>Ken Smith</i>	FARALLON	8/2/06	17:40	Please field filter the dissolved lead samples immediately.
Received by: <i>[Signature]</i>	OnSite Env	8/2/06	1740	
Relinquished by:				
Received by:				
Relinquished by:				
Received by:				
Reviewed by/Date	Reviewed by/Date	Chromatograms with final report <input type="checkbox"/>		

**ATTACHMENT B  
FORENSIC ANALYTICAL RESULTS**

**GROUNDWATER MONITORING REPORT**  
Olympic Athletic Club  
5301 Leary Avenue NW  
Seattle, Washington

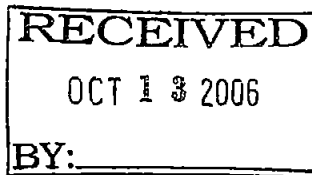
Farallon PN: 500-001

FRIEDMAN & BRUYA, INC.

ENVIRONMENTAL CHEMISTS

James E. Bruya, Ph.D.  
Charlene Morrow, M.S.  
Yelena Aravkina, M.S.  
Bradley T. Benson, B.S.  
Kurt Johnson, B.S.

3012 16th Avenue West  
Seattle, WA 98119-2029  
TEL: (206) 285-8282  
FAX: (206) 283-5044  
e-mail: fbi@isomedia.com



October 6, 2006

**PROJECT**

Carla F. Brock, Project Manager  
Farallon Consulting LLC  
320 3rd Ave. NE  
Issaquah, WA 98027

Dear Ms. Brock:

Included are the results from the additional testing of material submitted on August 4, 2006 from the Olympic Athletic Club, PO# 500-001, F&BI 608055 project.

The sample MW-3-080206 was analyzed for paraffin, isoparaffin, aromatic, naphthene, and olefin (PIANO) constituents using a GC fitted with a mass spectrometer (MS). The results of this testing, including the associated quality assurance, are enclosed.

In addition, we have reviewed the report issued by F&BI on August 25, 2006. This report consisted of analytical data generated from the testing of the sample MW-3-080206 using a GC fitted with a flame ionization detector (GC/FID); and for organometallic compounds using a GC fitted with an electron capture detector (ECD) as well as an inductively coupled plasma mass spectrometer (ICP-MS). The purpose of this review was to provide further information regarding the nature of the material present in this sample. Our findings are provided below.

Based on the GC/FID and GC/MS testing completed, the material present in the sample MW-3-080206 is characteristic of natural gasoline or similar materials. This material is not characteristic of typical reformulated gasoline based on the low level of aromatic hydrocarbons present.

Natural gasoline is typically associated with fuel manufacturing prior to the oil embargo in the 1970's or earlier. Additional research into the potential sources in the study area and/or comparative testing at additional locations may be useful in further defining the likely source and/or age of the material, if warranted.

FRIEDMAN & BRUYA, INC.

---

ENVIRONMENTAL CHEMISTS

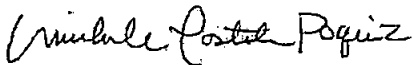
Carla F. Brock  
October 6, 2006  
Page 2

It should also be noted that materials such as that identified in the sample MW-3-080206 may yield false positive results for aromatic hydrocarbons such as benzene and toluene using EPA Method 8021 or similar tests which rely solely on retention time identification of a hydrocarbon. Therefore, if these analytes are of concern in the study area, we recommend the analytical suite used include, at a minimum, confirmatory testing using GC/MS (such as EPA Method 8260).

We appreciate this opportunity to be of service to you and hope you will call if you should have any questions.

Sincerely,

FRIEDMAN & BRUYA, INC.



Michele Costales Poquiz  
Chemist

Enclosures  
NAA1006R

FRIEDMAN & BRUYA, INC.

ENVIRONMENTAL CHEMISTS

Date of Report: 10/06/06  
 Date Received: 08/04/06  
 Project: Olympic Athletic Club, PO# 500-001, F&BI 608055  
 Date Analyzed: 08/30/06

**RESULTS FROM THE ANALYSIS OF THE PRODUCT SAMPLE FOR  
 PARAFFINS, ISOPARAFFINS, OLEFINS, NAPHTHENES, AND  
 AROMATICS USING ASTM D5134-92 MODIFIED  
 Results Reported as % by Weight**

Laboratory ID 608055-01  
 Client ID MW-3-080206

<u>Compound</u>	<u>Weight Percent</u>
Propane	<0.01
Methanol	<0.01
Isobutane	0.01
2-Methyl-1-propene	<0.01
Ethanol	<0.01
n-Butane	0.04
t-2-Butene	<0.01
c-2-Butene	<0.01
Isopropanol	<0.01
3-Methyl-1-butene	<0.01
Isopentane	0.49
tert-Butanol	<0.01
1-Pentene	<0.01
2-Methyl-1-butene	<0.01
n-Propanol	<0.01
n-Pentane	0.44
t-2-Pentene	<0.01
c-2-Pentene	<0.01
2-Methyl-2-butene	<0.01
MTBE	<0.01
sec-Butanol	<0.01
4-Methyl-1-pentene	<0.01
Isobutanol	<0.01
2,3-Dimethylbutane	0.16
Cyclopentane	0.09
2-Methylpentane	0.81
DIPE	<0.01
3-Methylpentane	0.74
1-Hexene	<0.01
ETBE	<0.01
n-Hexane	0.52

FRIEDMAN & BRUYA, INC.

ENVIRONMENTAL CHEMISTS

Date of Report: 10/06/06

Date Received: 08/04/06

Project: Olympic Athletic Club, PO# 500-001, F&BI 608055

Date Analyzed: 08/30/06

**RESULTS FROM THE ANALYSIS OF THE PRODUCT SAMPLE FOR  
PARAFFINS, ISOPARAFFINS, OLEFINS, NAPHTHENES, AND  
AROMATICS USING ASTM D5134-92 MODIFIED  
Results Reported as % by Weight**

Laboratory ID 608055-01  
Client ID MW-3-080206

<u>Compound</u>	<u>Weight Percent</u>
t-2-Hexene	<0.01
2-Methyl-1-pentene	<0.01
2-Methyl-2-pentene	<0.01
c-2-Hexene	<0.01
2,2-Dimethylpentane	0.04
2,4-Dimethylpentane	<0.01
Methylcyclopentane	1.70
2,2,3-Trimethylbutane	0.01
Benzene	<0.01
1-Methylcyclopentene	<0.01
TAME	<0.01
3,3-Dimethylpentane	0.04
Cyclohexane	1.03
2-Methylhexane	0.49
2,3-Dimethylpentane	0.44
1,1-Dimethylcyclopentane	0.33
3-Methylhexane	0.84
c-1,3-Dimethylcyclopentane	1.15
3-Ethylpentane	0.18
Isooctane	<0.01
t-1,2-Dimethylcyclopentane	1.69
1-Heptene	<0.01
n-Heptane	0.79
t-3-Heptene	<0.01
c-3-Heptene	<0.01
t-2-Heptene	<0.01
c-2-Heptene	<0.01
2,2-Dimethylhexane	0.02
2,5-Dimethylhexane	0.11
Methylcyclohexane	2.65
2,4-Dimethylhexane	0.15
Ethylcyclopentane	0.56

FRIEDMAN & BRUYA, INC.

ENVIRONMENTAL CHEMISTS

Date of Report: 10/06/06  
 Date Received: 08/04/06  
 Project: Olympic Athletic Club, PO# 500-001, F&BI 608055  
 Date Analyzed: 08/30/06

**RESULTS FROM THE ANALYSIS OF THE PRODUCT SAMPLE FOR  
 PARAFFINS, ISOPARAFFINS, OLEFINS, NAPHTHENES, AND  
 AROMATICS USING ASTM D5134-92 MODIFIED  
 Results Reported as % by Weight**

Laboratory ID 608055-01  
 Client ID MW-3-080206

<u>Compound</u>	<u>Weight Percent</u>
t-1,c-2,4-Trimethylcyclopentane	1.07
t-1,c-2,3-Trimethylcyclopentane	1.62
2,3,4-Trimethylpentane	0.07
Toluene	<0.01
2,3-Dimethylhexane	0.16
2-Methylheptane	1.11
3-Methylheptane	0.59
4-Methylheptane	0.27
3-Ethylhexane	0.12
1-Octene	<0.01
1,2,3-Trimethylcyclopentane	0.53
t-1,2-Dimethylcyclohexane	1.93
n-Octane	0.75
1-Ethyl-1-methylcyclopentane	0.32
c-2-Octene	0.06
c-1,2-Dimethylcyclohexane	1.11
Isopropylcyclopentane	0.13
2,5-Dimethylheptane	0.21
3,5-Dimethylheptane	0.05
n-Propylcyclopentane	0.25
Ethylbenzene	0.37
2,3-Dimethylheptane	0.53
3,4-Dimethylheptane	0.10
2-Methyloctane	0.29
m-Xylene	0.72
p-Xylene	0.27
3-Methyloctane	0.47
1-Nonene	<0.01
3,3-Diethylpentane	<0.01
t-3-Nonene	<0.01
c3-Nonene	<0.01
o-Xylene	0.09

FRIEDMAN & BRUYA, INC.

ENVIRONMENTAL CHEMISTS

Date of Report: 10/06/06  
 Date Received: 08/04/06  
 Project: Olympic Athletic Club, PO# 500-001, F&BI 608055  
 Date Analyzed: 08/30/06

**RESULTS FROM THE ANALYSIS OF THE PRODUCT SAMPLE FOR  
 PARAFFINS, ISOPARAFFINS, OLEFINS, NAPHTHENES, AND  
 AROMATICS USING ASTM D5134-92 MODIFIED  
 Results Reported as % by Weight**

Laboratory ID 608055-01  
 Client ID MW-3-080206

<u>Compound</u>	<u>Weight Percent</u>
n-Nonane	0.57
Isobutylcyclopentane	<0.01
t-2-Nonene	<0.01
c-2-Nonene	<0.01
Isopropylbenzene	0.12
3,3-Dimethyloctane	0.06
n-Butylcyclopentane	0.18
n-Propylbenzene	0.32
2,3-Dimethyloctane	0.24
1-Methyl-3-ethylbenzene	0.27
1-Methyl-4-ethylbenzene	0.24
2-Methylnonane	0.26
3-Ethyloctane	<0.01
3-Methylnonane	0.23
1,3,5-Trimethylbenzene	0.37
1-Methyl-2-ethylbenzene	0.36
1,2,4-Trimethylbenzene	0.89
tert-Butylbenzene	<0.01
n-Decane	0.16
Isobutylbenzene	<0.01
Isopropylcyclohexane	<0.01
sec-Butylbenzene	0.17
1-Methyl-3-isopropylbenzene	0.22
Isobutylcyclohexane	<0.01
1-Methyl-4-isopropylbenzene	0.24
1,2,3-Trimethylbenzene	0.78
Indan	0.05
1-Methyl-3-n-propylbenzene	0.21
1-Methyl-4-n-propylbenzene	0.11
n-Butylbenzene	0.18
1,3-Dimethyl-5-ethylbenzene	0.30
1,2-Diethylbenzene	0.05

FRIEDMAN & BRUYA, INC.

ENVIRONMENTAL CHEMISTS

Date of Report: 10/06/06

Date Received: 08/04/06

Project: Olympic Athletic Club, PO# 500-001, F&BI 608055

Date Analyzed: 08/30/06

**RESULTS FROM THE ANALYSIS OF THE PRODUCT SAMPLE FOR  
PARAFFINS, ISOPARAFFINS, OLEFINS, NAPHTHENES, AND  
AROMATICS USING ASTM D5134-92 MODIFIED**

**Results Reported as % by Weight**

Laboratory ID 608055-01  
Client ID MW-3-080206

<u>Compound</u>	<u>Weight Percent</u>
1-Methyl-2-n-propylbenzene	0.14
1,4-Dimethyl-2-ethylbenzene	0.15
1,2-Dimethyl-4-ethylbenzene	0.22
1,3-Dimethyl-2-ethylbenzene	0.22
1,2-Dimethyl-3-ethylbenzene	0.13
n-Undecane	0.43
1,2,4,5-Tetramethylbenzene	0.11
2-Methylbutylbenzene	0.03
n-Pentylbenzene	0.06
Methylindan	0.13
1-tert-Butyl-3,5-dimethylbenzene	<0.01
1-tert-Butyl-4-ethylbenzene	<0.01
n-Dodecane	0.25
1,3,5-Triethylbenzene	<0.01
1,2,4-Triethylbenzene	<0.01
Naphthalene	0.25
n-Hexylbenzene	0.04
2-Methylnaphthalene	0.13
n-Tridecane	0.07
1-Methylnaphthalene	0.05
n-Tetradecane	<0.01
n-Pentadecane	<0.01

FRIEDMAN & BRUYA, INC.

ENVIRONMENTAL CHEMISTS

Date of Report: 10/06/06  
 Date Received: 08/04/06  
 Project: Olympic Athletic Club, PO# 500-001, F&BI 608055  
 Date Analyzed: 08/30/06

**RESULTS FROM THE ANALYSIS OF THE PRODUCT SAMPLE FOR  
 PARAFFINS, ISOPARAFFINS, OLEFINS, NAPHTHENES, AND  
 AROMATICS USING ASTM D5134-92 MODIFIED  
 Results Reported as % by Weight**

PIANO SUMMARY

Laboratory ID 608055-01  
 Client ID MW-3-080206

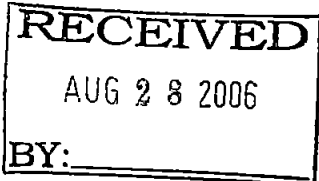
	<u>Weight Percent</u>
Total Identified Compounds	37.70
Oxygenated Compounds	0.00
Hydrocarbon Compounds	37.70
Unidentified Compounds	<u>62.30</u>
Total	100

	Paraffins	Isoparaffins	Aromatics	Naphthenes	Olefins	Total
C3	<0.01					<0.01
C4	0.04	0.01			<0.01	0.05
C5	0.44	0.49		0.09	<0.01	1.01
C6	0.52	1.70	<0.01	2.73	<0.01	4.96
C7	0.79	2.03	<0.01	6.38	<0.01	9.20
C8	0.75	2.59	1.45	6.95	0.06	11.81
C9	0.57	1.65	3.41	0.18	<0.01	5.81
C10	0.16	0.80	2.84	<0.01		3.79
C11	0.43		0.28			0.71
C12	0.25		0.04			0.29
C13	0.07					0.07
C14	<0.01					<0.01
C15	<0.01					<0.01
Total	4.02	9.27	8.01	16.34	0.06	37.70



FRIEDMAN & BRUYA, INC.

ENVIRONMENTAL CHEMISTS



3012 16th Avenue West  
Seattle, WA 98119-2029  
TEL: (206) 285-8282  
FAX: (206) 283-5044  
e-mail: fbi@isomedia.com

James E. Bruya, Ph.D.  
Charlene Morrow, M.S.  
Yelena Aravkina, M.S.  
Bradley T. Benson, B.S.  
Kurt Johnson, B.S.

August 25, 2006

Carla F. Brock, Project Manager  
Farallon Consulting LLC  
320 3<sup>rd</sup> Ave. NE  
Issaquah, WA 98027

Dear Ms. Brock:

Included are the results from the testing of material submitted on August 4, 2006 from the Olympic Athletic Club, PO# 500-001, F&BI 608055 project. The product sample submitted for forensic evaluation arrived in good condition. Upon arrival, the sample MW-3-080206 was placed in a refrigerator maintained at 4°C until removed for sample processing.

The sample MW-3-080206 was diluted and analyzed using a gas chromatograph with a flame ionization detector (GC/FID). The data generated yielded information on the boiling range and general chemical composition of the material present. The GC/FID traces are enclosed. A GC/FID trace of a standard consisting of normal alkanes is also provided for reference purposes.

In addition, the sample MW-3-080206 was analyzed for organometallic compounds using GC fitted with an electron capture detector (ECD) as well as an inductively coupled plasma mass spectrometer (ICP-MS). The results of this testing, including the associated quality assurance, are also enclosed.

Please contact us if additional consultation is needed by our firm in the interpretation of the analytical results provided. We appreciate this opportunity to be of service to you and hope you will call if you should have any questions. We will hold your samples for 30 days before disposal unless directed otherwise.

Sincerely,

FRIEDMAN & BRUYA, INC.



Michele Triviño Costales  
Chemist  
Enclosures  
NAA0825R.DOC

FRIEDMAN & BRUYA, INC.

ENVIRONMENTAL CHEMISTS

Date of Report: 08/25/06

Date Received: 08/04/06

Project: Olympic Athletic Club, PO# 500-001, F&BI 608055

Date Extracted: 08/08/06

Date Analyzed: 08/08/06

**RESULTS FROM THE ANALYSIS OF THE PRODUCT SAMPLE  
FOR FORENSIC EVALUATION  
BY CAPILLARY GAS CHROMATOGRAPHY  
USING A FLAME IONIZATION DETECTOR (FID)  
AND ELECTRON CAPTURE DETECTOR (ECD)**

Sample ID

GC Characterization

MW-3-080206

The GC trace using the flame ionization detector (FID) showed the presence of low boiling compounds. The patterns displayed by these peaks are indicative of natural gasoline.

The low boiling compounds appear as a ragged pattern of peaks eluting from *n*-C<sub>7</sub> to *n*-C<sub>13</sub> showing a maximum near *n*-C<sub>7</sub>. This correlates with a temperature range of approximately 100°C to 240°C with a maximum near 100°C.

Within this range, the GC/FID trace showed the presence of peaks, at varying levels, that are indicative of the xylenes, C3-benzenes, and methyl naphthalenes.

The large peak seen near 25 minutes on the GC/FID trace is pentacosane, added as a quality assurance check for this GC analysis. There is a second surrogate present that is seen on the GC/ECD trace at about 26 minutes which is dibutyl chloroendate.

FRIEDMAN & BRUYA, INC.

ENVIRONMENTAL CHEMISTS

Date of Report: 08/25/06  
 Date Received: 08/04/06  
 Project: Olympic Athletic Club, PO# 500-001, F&BI 608055  
 Date Extracted: 08/17/06  
 Date Analyzed: 08/18/06

**RESULTS FROM THE ANALYSIS OF PRODUCT SAMPLES  
 FOR ORGANIC LEAD SPECIATION AND MANGANESE  
 BY METHOD 8082 MODIFIED**  
 Results Reported as µg/g (ppm)

<u>Sample ID</u> Laboratory ID	<u>TML</u>	<u>TMEL</u>	<u>DMDEL</u>	<u>MTEL</u>	<u>TEL</u>	<u>MMT</u>	Surrogate (% Rec.) (Limit 50-150)
MW-3-080206 608055-01	<1	<1	<1	<1	<1	<1	101
Method Blank	<1	<1	<1	<1	<1	<1	111

TML      Tetramethyl Lead  
 TMEL     Trimethylethyl Lead  
 DMDEL    Dimethyldiethyl Lead  
 MTEL     Methyltriethyl Lead  
 TEL       Tetraethyl Lead  
 MMT      Methylcyclopentadienyl Manganese Tricarbonyl

FRIEDMAN & BRUYA, INC.

ENVIRONMENTAL CHEMISTS

Analysis For Total Organic Lead and Manganese By EPA Method 200.8

Client ID:	MW-3-080206	Client:	Farallon Consulting LLC
Date Received:	08/04/06	Project:	Olympic Athletic Club, F&BI 608055
Date Extracted:	08/14/06	Lab ID:	608055-01
Date Analyzed:	08/14/06	Data File:	608055-01.022
Matrix:	Product	Instrument:	ICPMS1
Units:	ug/g (ppm)	Operator:	btb

Analyte:	Concentration ug/g (ppm)
Organic Lead	<1
Organic Manganese	<1

FRIEDMAN & BRUYA, INC.

ENVIRONMENTAL CHEMISTS

Analysis For Total Organic Lead and Manganese By EPA Method 200.8

Client ID:	Method Blank	Client:	Farallon Consulting LLC
Date Received:	Not Applicable	Project:	Olympic Athletic Club, F&BI 608055
Date Extracted:	08/14/06	Lab ID:	I6-329 mb
Date Analyzed:	08/14/06	Data File:	I6-329 mb.018
Matrix:	Product	Instrument:	ICPMS1
Units:	ug/g (ppm)	Operator:	btb

Analyte:	Concentration ug/g (ppm)
Organic Lead	<1
Organic Manganese	<1

FRIEDMAN & BRUYA, INC.

ENVIRONMENTAL CHEMISTS

Date of Report: 08/25/06

Date Received: 08/04/06

Project: Olympic Athletic Club, PO# 500-001, F&BI 608055

**QUALITY ASSURANCE RESULTS  
FROM THE ANALYSIS OF PRODUCT SAMPLES FOR  
ORGANIC LEAD AND MANGANESE  
BY EPA METHOD 8082 MODIFIED**

Laboratory Code: 608055-01 (Duplicate)

Analyte	Reporting Units	Sample Result	Duplicate Result	Relative Percent Difference (Limit 20)
Tetramethyl lead	µg/g (ppm)	<1	<1	nm
Tetraethyl lead	µg/g (ppm)	<1	<1	nm
MMT	µg/g (ppm)	<1	<1	nm

Laboratory Code: Laboratory Control Sample

Analyte	Reporting Units	Spike Level	Percent Recovery LCS	Percent Recovery LCSD	Acceptance Criteria	RPD (Limit 20)
Tetramethyl lead	µg/g (ppm)	25	104	105	70-130	1
Tetraethyl lead	µg/g (ppm)	25	87	88	70-130	1
MMT	µg/g (ppm)	25	87	87	70-130	0

nm - The analyte was not detected in one or more of the duplicate analyses. Therefore, calculation of the RPD is not applicable.

FRIEDMAN & BRUYA, INC.

ENVIRONMENTAL CHEMISTS

Date of Report: 08/25/06

Date Received: 08/04/06

Project: Olympic Athletic Club, PO# 500-001, F&BI 608055

**QUALITY ASSURANCE RESULTS  
FOR THE ANALYSIS OF PRODUCT SAMPLES  
FOR METALS BY EPA METHOD 200.8**

Laboratory Code: 608055-01 (Duplicate)

end

Analyte	Reporting Units	Sample Result	Duplicate Result	Relative Percent Difference	Acceptance Criteria
Organic Lead	ug/g (ppm)	<1	<1	nm	0-20
Organic Manganese	ug/g (ppm)	<1	<1	nm	0-20

Laboratory Code: 608055-01 (Matrix Spike)

Analyte	Reporting Units	Spike Level	Sample Result	Percent Recovery MS	Acceptance Criteria
Organic Lead	ug/g (ppm)	70.7	<1	101	50-150
Organic Manganese	ug/g (ppm)	12.5	<1	104	50-150

Laboratory Code: Laboratory Control Sample

Analyte	Reporting Units	Spike Level	Percent Recovery LCS	Acceptance Criteria
Chromium	ug/g (ppm)	70.7	100	70-130
Organic Manganese	ug/g (ppm)	12.5	105	70-130

nm - The analyte was not detected in one or more of the duplicate analyses. Therefore, calculation of the RPD is not applicable.

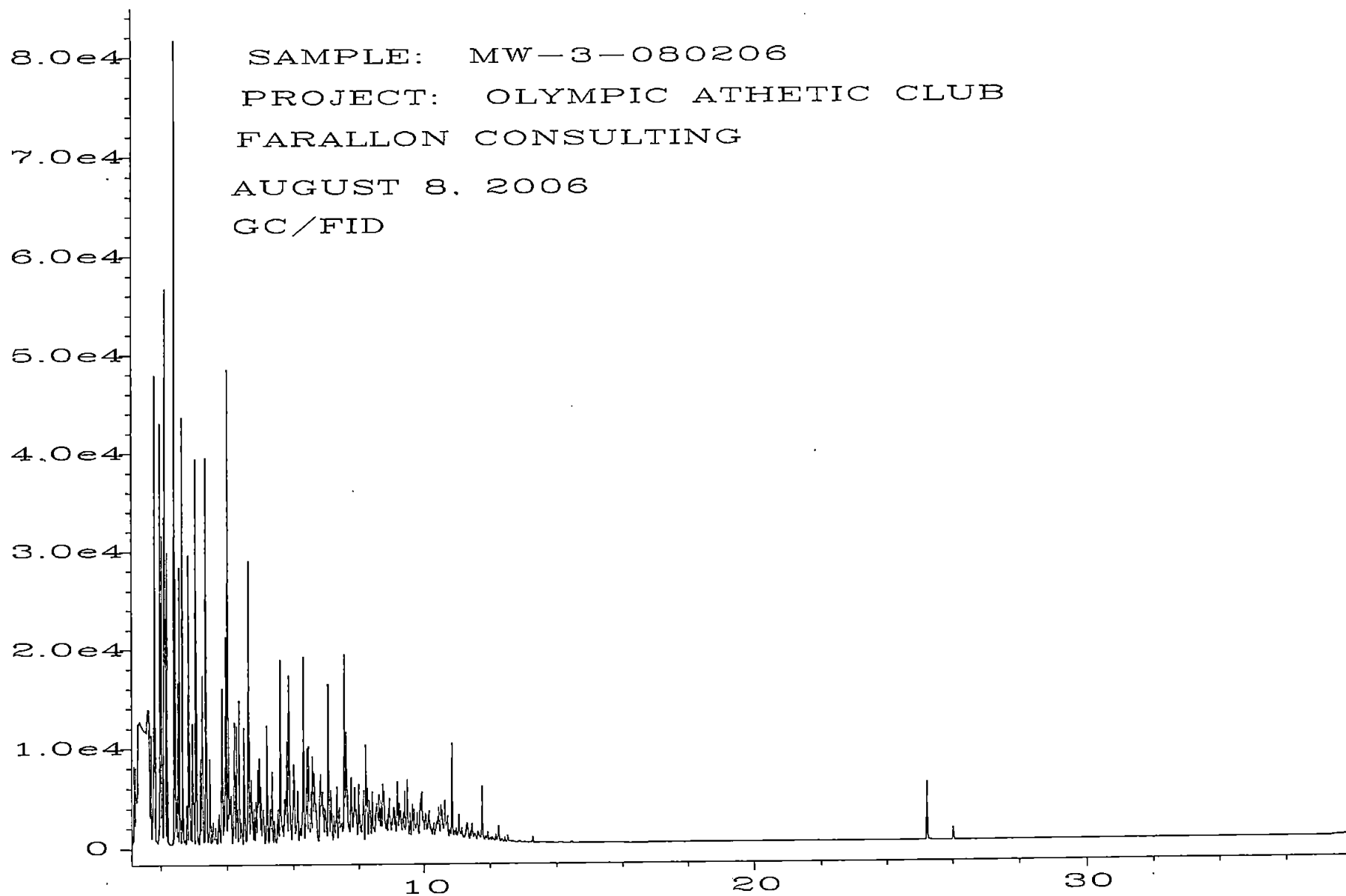


Fig. 1 in C:\HPCHEM\1\DATA\08-08-06\016F0501.D

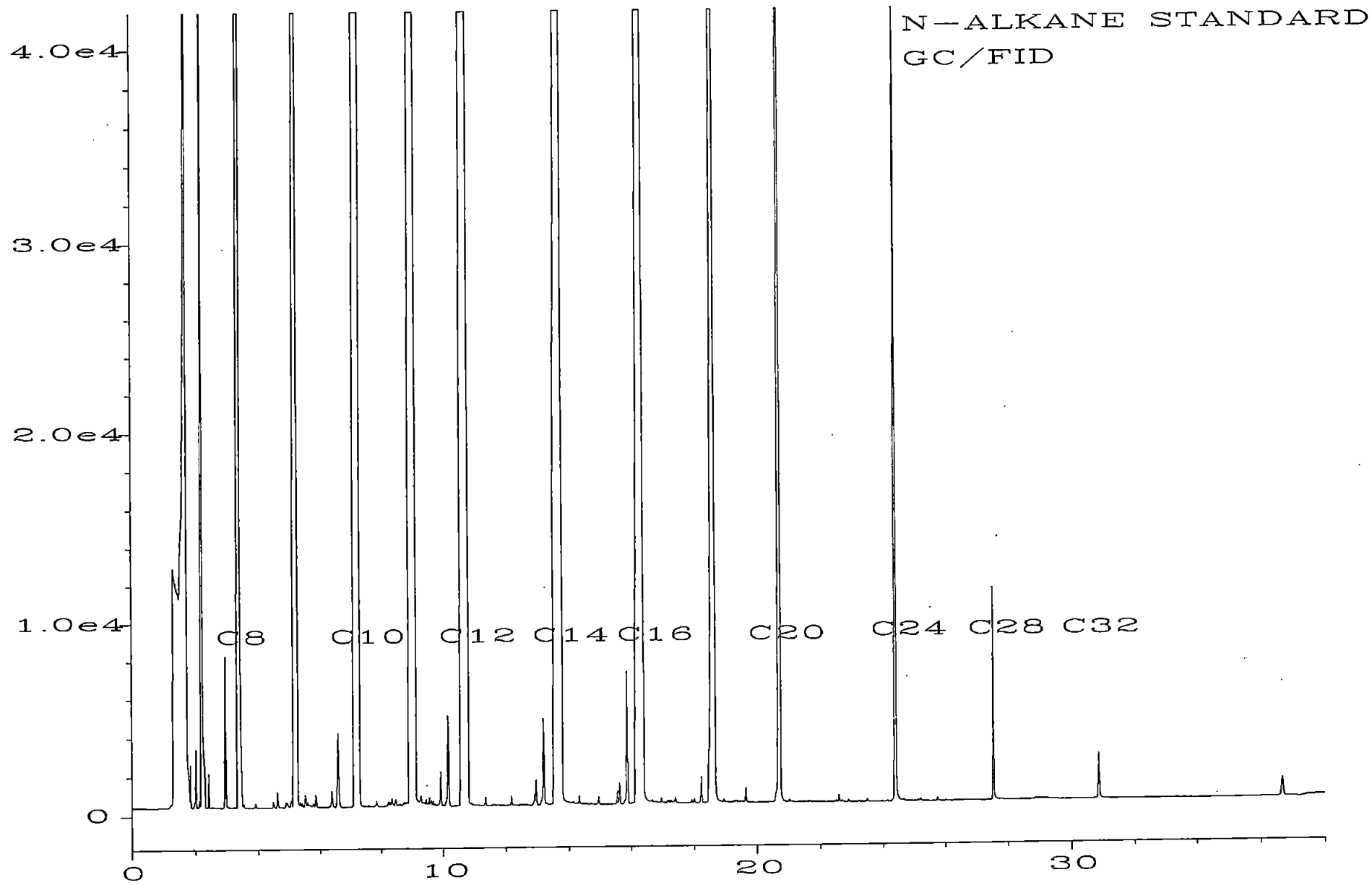


Fig. 1 in C:\HPCHEM\1\DATA\08-08-06\100F0301.D

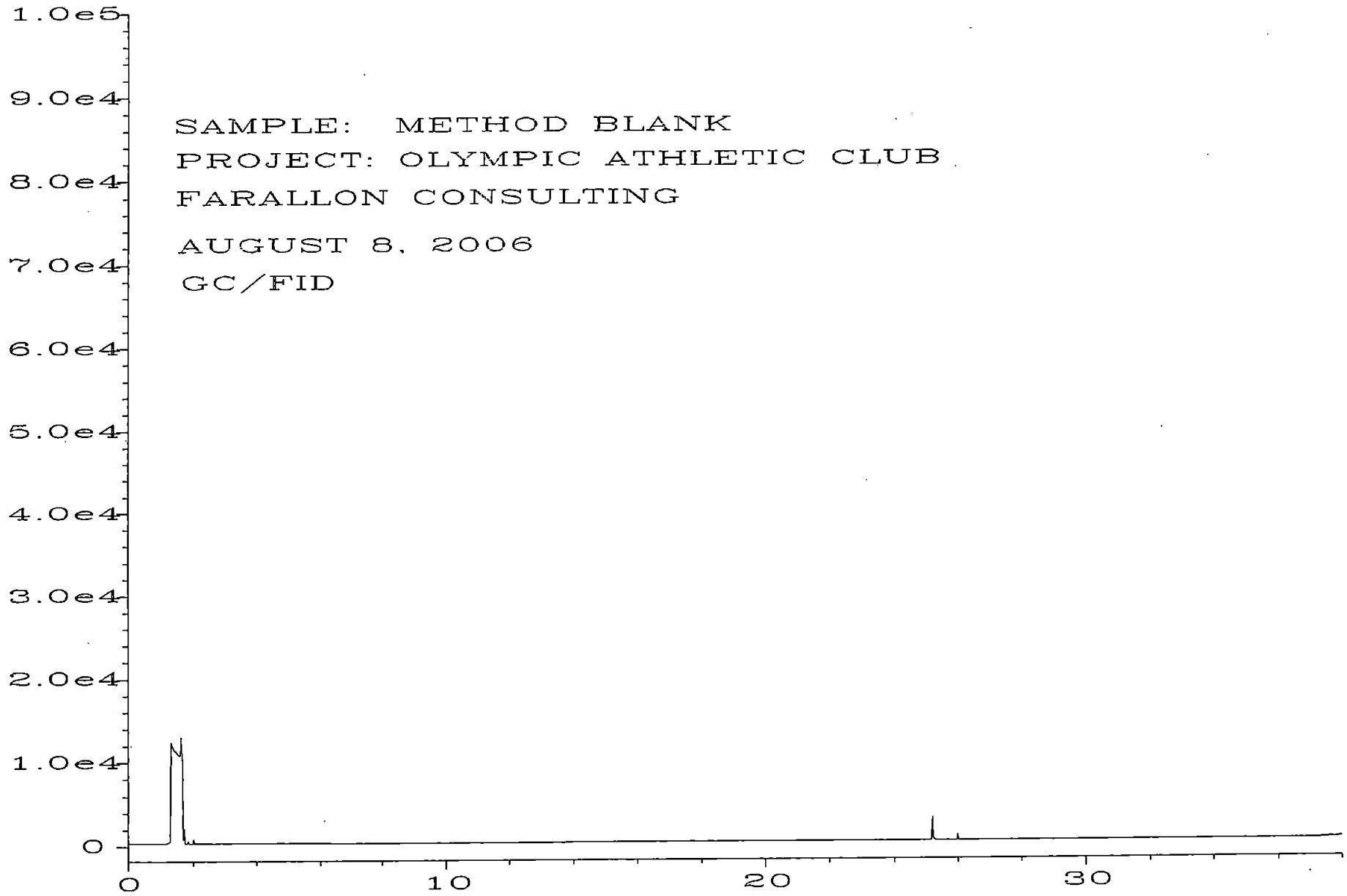


Fig. 1 in J:\HPCHEM\1\DATA\08-08-06\003F0901.D

608055

SAMPLE CHAIN OF CUSTODY

MC 08/04/06

CO2

Page # 1 of 1

Send Report To Carla F. Brock  
 Company Farallon Consulting LLC  
 Address 320 3rd Ave NE  
 City, State, ZIP Issaquah WA 98027  
 Phone # (425) 427-0061 Fax # (425) 427-0061

SAMPLERS (signature) Ken Gustafson  
 PROJECT NAME/NO. Olympic Athletic Club PO # 500-001  
500-001  
 REMARKS  
Attn: Kurt

TURNAROUND TIME  
 Standard (2 Weeks)  
 RUSH  
 Rush charges authorized by: \_\_\_\_\_  
 SAMPLE DISPOSAL  
 Dispose after 90 days  
 Return samples  
 Will call with instructions

Sample ID	Lab ID	Date	Time	Sample Type	# of containers	ANALYSES REQUESTED							Notes		
						TPH-Diesel	TPH-Gasoline	BTEX by 8021B	VOCs by 8260	SVOCs by 8270	HPS	GCED Pb/Mn		ICAMS	
MW-3-080206	01 A-C	8/2/06	11:15		3							✓	✓	✓	

Friedman & Bruya, Inc.  
 3012 16th Avenue West  
 Seattle, WA 98119-2029  
 Ph. (206) 285-8282  
 Fax (206) 283-5044  
 FORMS\COC\COC.DOC

SIGNATURE	PRINT NAME	COMPANY	DATE	TIME
Relinquished by: <u>Carla F. Brock</u>	<u>Carla F. Brock</u>	<u>Farallon Consulting</u>	<u>8/3/06</u>	<u>0800</u>
Received by: <u>M. Tan</u>	<u>Nhan Phan</u>	<u>FBI</u>	<u>8/4/06</u>	<u>10:00</u>
Relinquished by:				
Received by:				

08/02/06 04:47pm P. 002