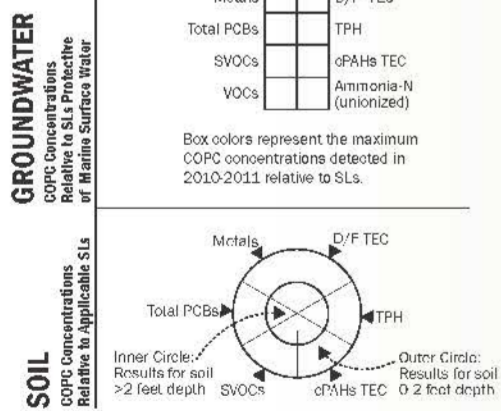


Soil Results Compared to Screening Levels Protective of Groundwater as Marine Surface Water

- FUA = Functional Use Area
 - COPC = Contaminant of potential concern
 - TPH = Total petroleum hydrocarbons
 - cPAHs = Carcinogenic polycyclic aromatic hydrocarbons
 - SVOCs = Semivolatile organic compounds
 - PDBs = Polychlorinated biphenyls
 - D/F = Dioxins/furans
 - VOCs = Volatile organic compounds
 - Ammonia-N = Ammonia as nitrogen
 - TEC = Toxic equivalent concentration
 - GW = Groundwater
 - TEE = Terrestrial ecological
 - HH = Human health direct-contact
 - ng/kg = Milligrams per kilogram
 - ug/kg = Micrograms per kilogram
 - ng/L = Milligrams per liter
 - ug/L = Micrograms per liter
 - pg/L = Picograms per liter
 - SLs = Screening levels
 - N/A = Not analyzed
 - ND = Not detected
- * = The number shown in parentheses indicates the number of locations where more than half of the non-detect COPC results had analytical reporting limits above SLs for this pathway.
- ** = A limited number of VOCs were detected, but the detected VOCs are not considered COPCs for the Upland Study Area.

Soil Results Compared to Terrestrial Ecological-Based Screening Levels

Soil Results Compared to Human Health-Based (Direct Contact) Screening Levels



COPC	Shallow Soil (0-2 feet) Range of Detected Concentrations	No. of Shallow Soil Locations with Exceedances (by Pathway)	Deep Soil (>2 feet) Range of Detected Concentrations	No. of Deep Soil Locations with Exceedances (by Pathway)	Groundwater Range of Detected Concentrations	No. of Groundwater Locations with Exceedances
TPH	N/A	N/A	6.9 to 49 mg/kg	Soil to GW = 0 of 2 TEE = 0 of 2 HH = 0 of 2	ND	0 of 6
cPAHs TEC	102.98 to 3990.4 ug/kg	Soil to GW = 4 of 15 (2)* TEE = 0 of 15 HH = 8 of 15 (5)*	3.967 to 163 ug/kg	Soil to GW = 0 of 11 TEE = 0 of 11 HH = 1 of 11 (8)*	0.0151 to 0.08405 ug/L	1 of 6
SVOCs	96 to 790 ug/kg	Soil to GW = 1 of 15 TEE = 0 of 15 HH = 0 of 15	14 to 590 ug/kg	Soil to GW = 0 of 11 TEE = 0 of 11 HH = 0 of 11	0.017 to 1.4 ug/L	0 of 6
Total PCBs	ND	Soil to GW = 0 of 13 (13)* TEE = 0 of 13 HH = 0 of 13	0.0136 to 0.0136 mg/kg	Soil to GW = 1 of 8 (7)* TEE = 0 of 8 HH = 0 of 8	0.01 to 0.012 ug/L	2 of 6
Metals	0.01 to 1900 mg/kg	Soil to GW = 11 of 15 TEE = 11 of 15 HH = 0 of 15	0.02 to 8610 mg/kg	Soil to GW = 6 of 11 TEE = 7 of 11 HH = 2 of 11	0.0002 to 1.19 mg/L	6 of 6
D/F TEC	0.546 to 19,759 ng/kg	Soil to GW = 5 of 9 TEE = 5 of 9 HH = 2 of 9	0.247 to 3,626 ng/kg	Soil to GW = 0 of 9 TEE = 0 of 9 HH = 0 of 9	1.28 to 21.9 pg/L	4 of 5
VOCs	ND**	Soil to GW = 0 of 13 TEE = 0 of 13 HH = 0 of 13	ND**	Soil to GW = 0 of 7 TEE = 0 of 7 HH = 0 of 7	ND**	0 of 5
Ammonia-N (un-ionized)	N/A	N/A	N/A	N/A	0.00046 to 0.879 mg/L	1 of 6

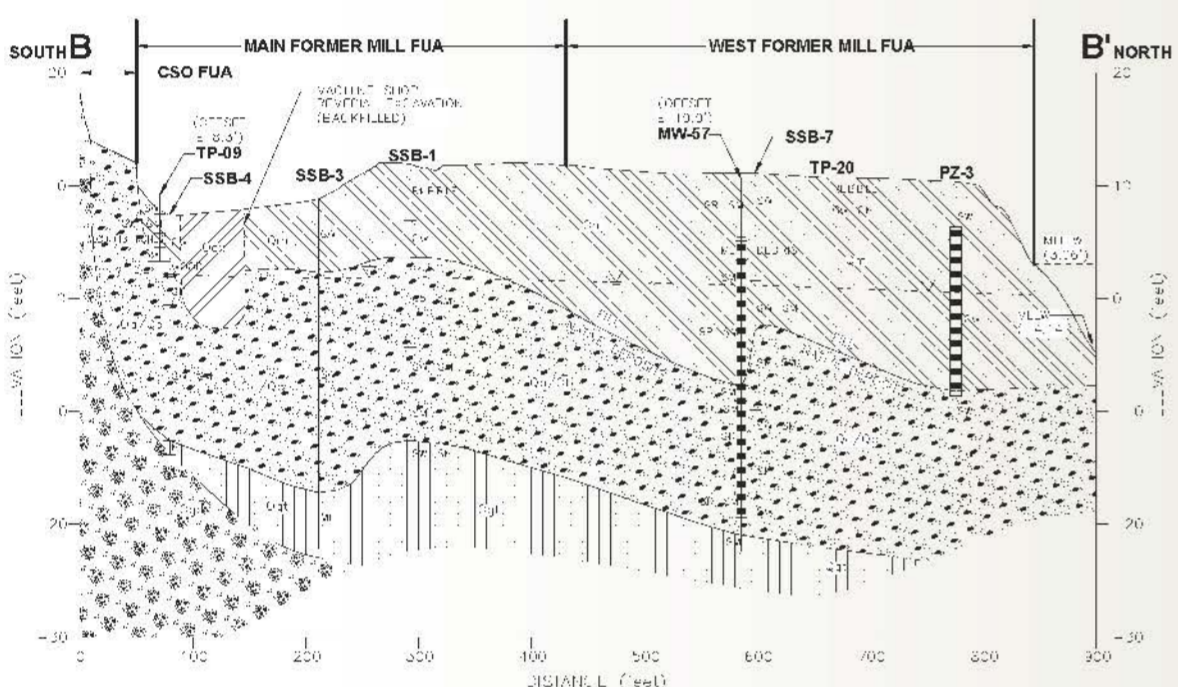
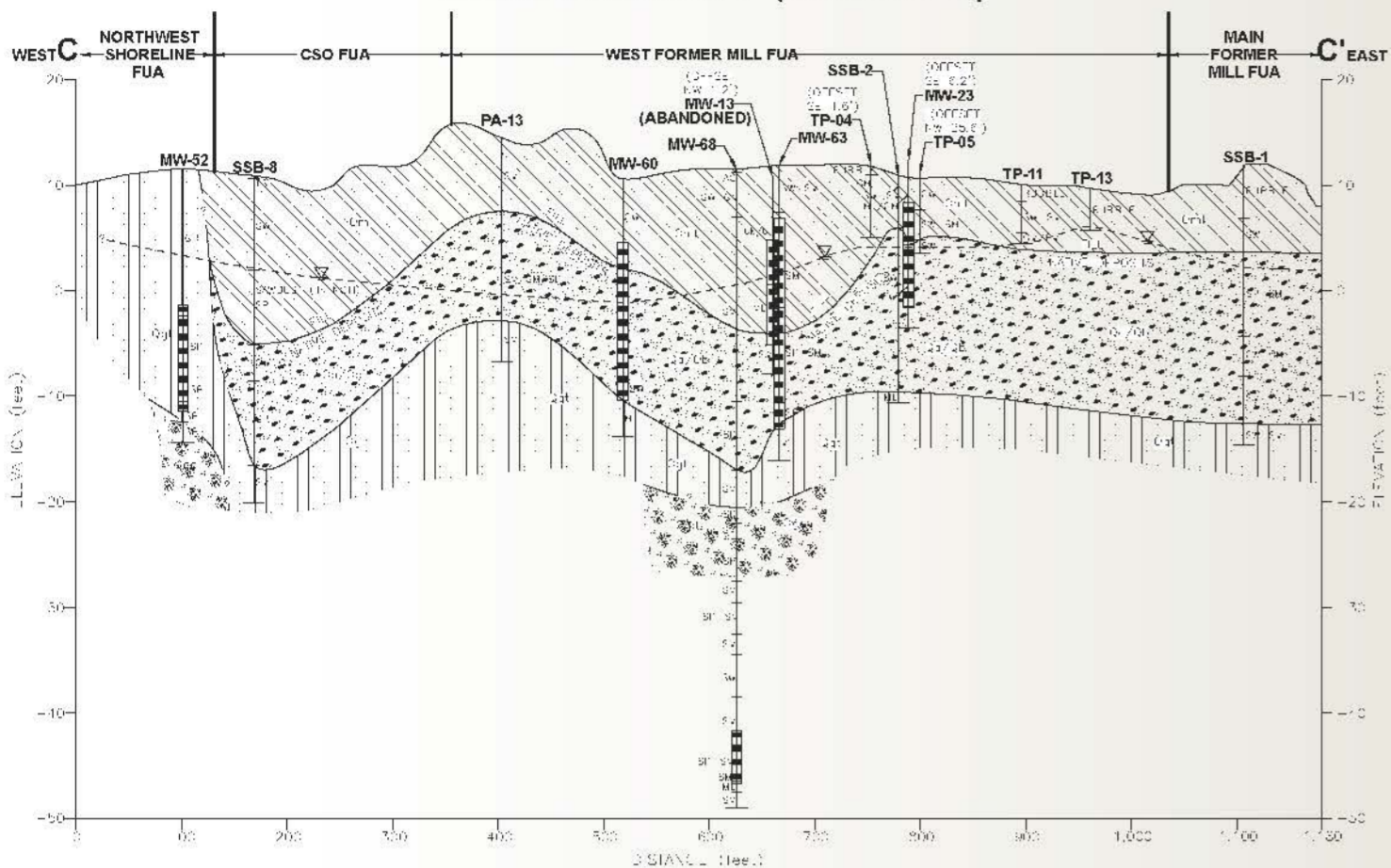


- Monitoring well
- Not analyzed
- No detections
- At least one detection - SLs not established
- At least one detection, but none > SLs
- At least one detection > SLs, but none > 10x SLs
- At least one detection ≥ 10x SLs, but none ≥ 100x SLs
- At least one detection ≥ 100x SLs

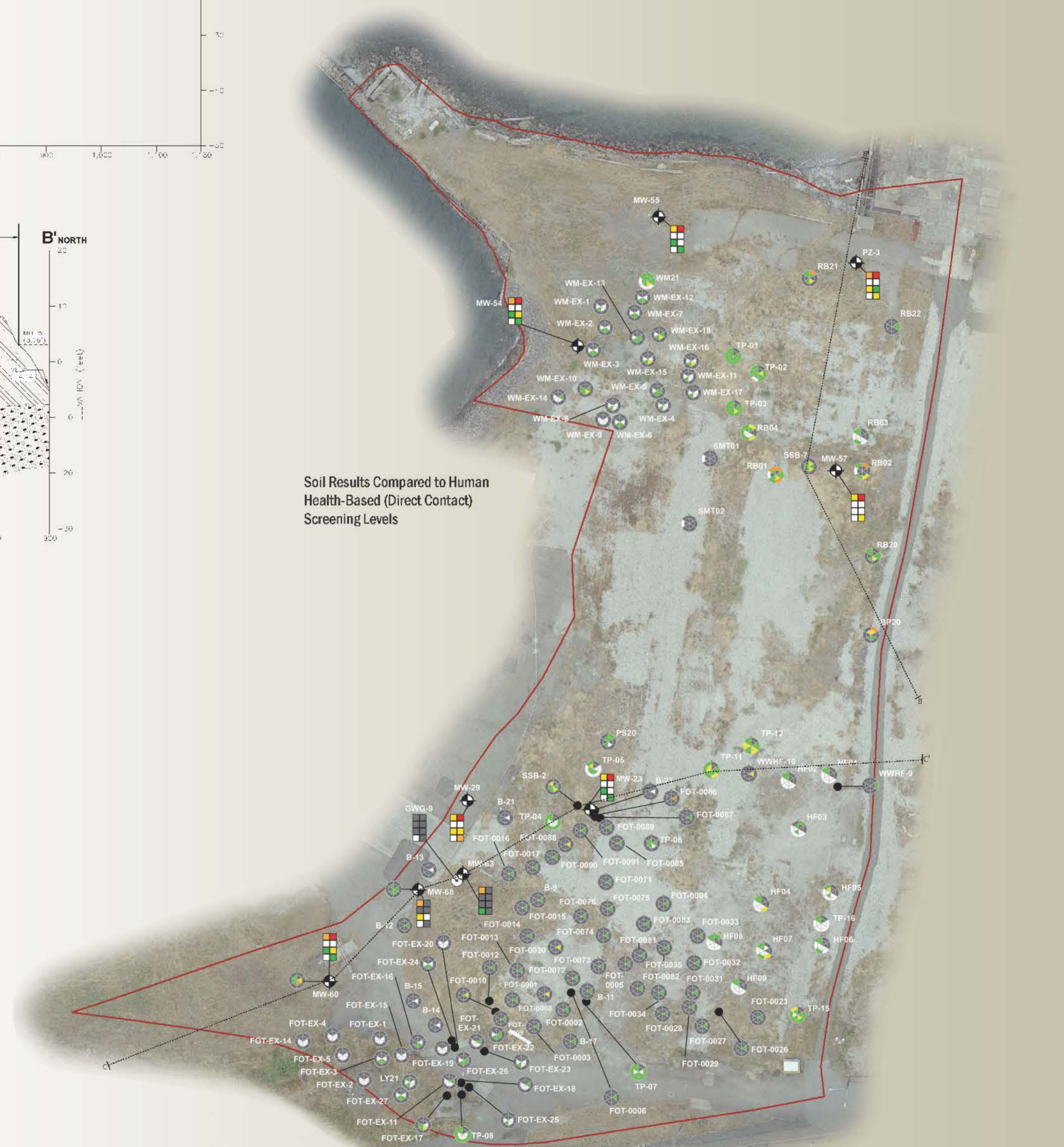


West Former Mill Area

CROSS SECTION C-C' (TRUNCATED)



Soil Results Compared to Human Health-Based (Direct Contact) Screening Levels



COPC	Shallow Soil (0-2 feet) Range of Detected Concentrations	No. of Shallow Soil Locations with Exceedances (by Pathway)	Deep Soil (>2 feet) Range of Detected Concentrations	No. of Deep Soil Locations with Exceedances (by Pathway)	Groundwater Range of Detected Concentrations	No. of Groundwater Locations with Exceedances
TPH	5.2 to 1700 mg/kg	Soil to GW = 0 of 16 (1)* TEE = 4 of 16 (1)* HH = 0 of 16 (1)*	4.9 to 39000 mg/kg	Soil to GW = 8 of 111 (2)* TEE = 28 of 111 (2)* HH = 8 of 111 (2)*	ND	0 of 7
cPAHs TEC	6.82 to 3467 ug/kg	Soil to GW = 2 of 25 TEE = 0 of 25 HH = 7 of 25 (9)*	3.7495 to 2931 ug/kg	Soil to GW = 5 of 72 TEE = 0 of 72 HH = 15 of 72 (12)*	0.0071 to 0.10749 ug/L	3 of 8
SVOCs	9.9 to 5000 ug/kg	Soil to GW = 2 of 25 (3)* TEE = 0 of 25 HH = 0 of 25	5 to 15000 ug/kg	Soil to GW = 2 of 72 (5)* TEE = 0 of 72 HH = 0 of 72	0.01 to 4.9 ug/L	3 of 8
Total PCBs	0.18 to 0.515 mg/kg	Soil to GW = 10 of 27 (15)* TEE = 0 of 27 HH = 1 of 27	0.0041 to 2.1 mg/kg	Soil to GW = 13 of 65 (51)* TEE = 2 of 65 HH = 2 of 65	ND	0 of 7
Metals	0.02 to 2300 mg/kg	Soil to GW = 10 of 26 TEE = 17 of 26 HH = 2 of 26	0.02 to 14100 mg/kg	Soil to GW = 16 of 34 TEE = 20 of 34 HH = 6 of 34	3.56E-05 to 4.34 mg/L	9 of 9
D/F TEC	0.444 to 525.673 ng/kg	Soil to GW = 5 of 9 TEE = 5 of 9 HH = 5 of 9	0.243 to 68.908 ng/kg	Soil to GW = 3 of 7 TEE = 3 of 7 HH = 2 of 7	1.32 to 62.4 ug/L	7 of 7
VOCs	ND**	Soil to GW = 0 of 13 TEE = 0 of 13 HH = 0 of 13	ND**	Soil to GW = 0 of 16 TEE = 0 of 16 HH = 0 of 16	0.2 to 2.7 ug/L	0 of 10
Ammonia-N (un-ionized)	N/A	N/A	N/A	N/A	0.000629 to 0.542 mg/L	3 of 7

FUA = Functional Use Area
 COPC = Contaminant of potential concern
 TPH = Total petroleum hydrocarbons
 cPAHs = Carcinogenic polycyclic aromatic hydrocarbons
 SVOCs = Semivolatile organic compounds
 PCBs = Polychlorinated biphenyls
 D/F = Dioxins/furans
 VOCs = Volatile organic compounds
 Ammonia-N = Ammonia as nitrogen
 TEC = Toxic equivalent concentration
 GW = Groundwater
 TEE = Terrestrial ecological
 HH = Human health direct-contact
 mg/kg = Milligrams per kilogram
 ug/kg = Micrograms per kilogram
 ng/L = Nanograms per liter
 ug/L = Milligrams per liter
 ug/L = Micrograms per liter
 pg/L = Picograms per liter
 SLs = Screening levels
 N/A = Not analyzed
 ND = Not detected
 * = The number shown in parentheses indicates the number of locations where more than half of the non-detect COPC results had analytical reporting limits above SLs for this pathway
 ** = A limited number of VOCs were detected, but the detected VOCs are not considered COPCs for the Upland Study Area.

GROUNDWATER
 COPC Concentrations Relative to SLs Protective of Human Surface Water

Box colors represent the maximum COPC concentrations detected in 2010-2011 relative to SLs.

Monitoring well

- Not analyzed
- No detections
- At least one detection - SLs not established
- At least one detection, but none > SLs
- At least one detection > SLs, but none > 10x SLs
- At least one detection > 10x SLs, but none > 100x SLs
- At least one detection > 100x SLs

SOIL
 COPC Concentrations Relative to SLs Protective of Human Surface Water

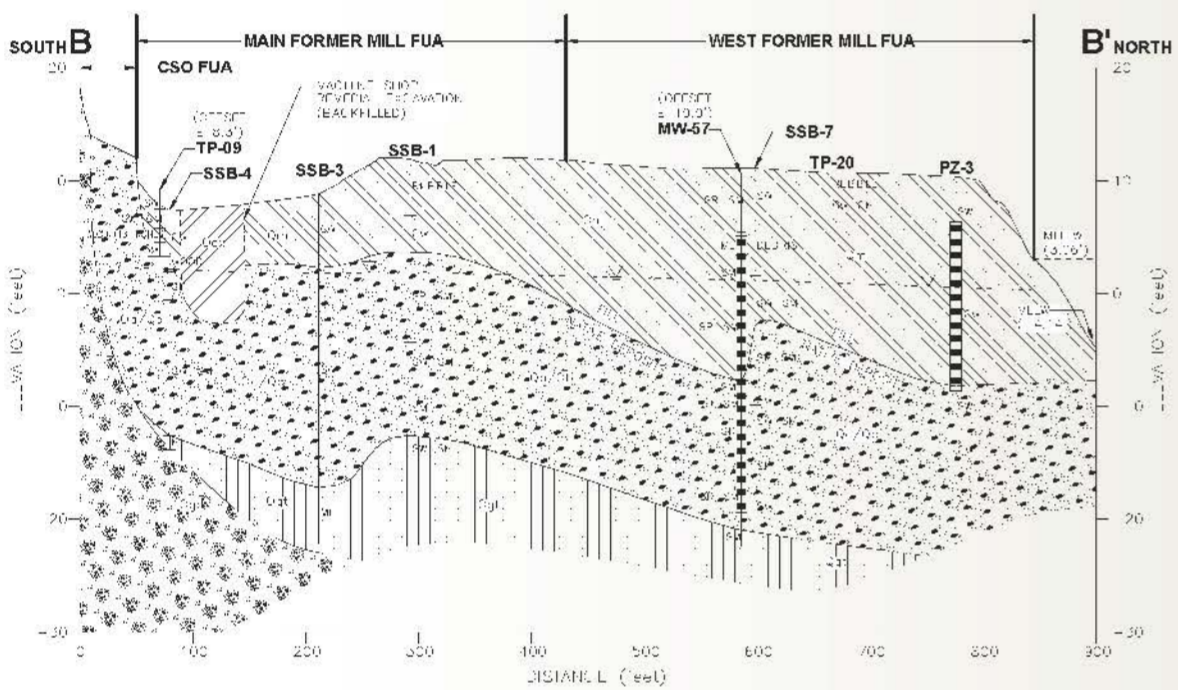
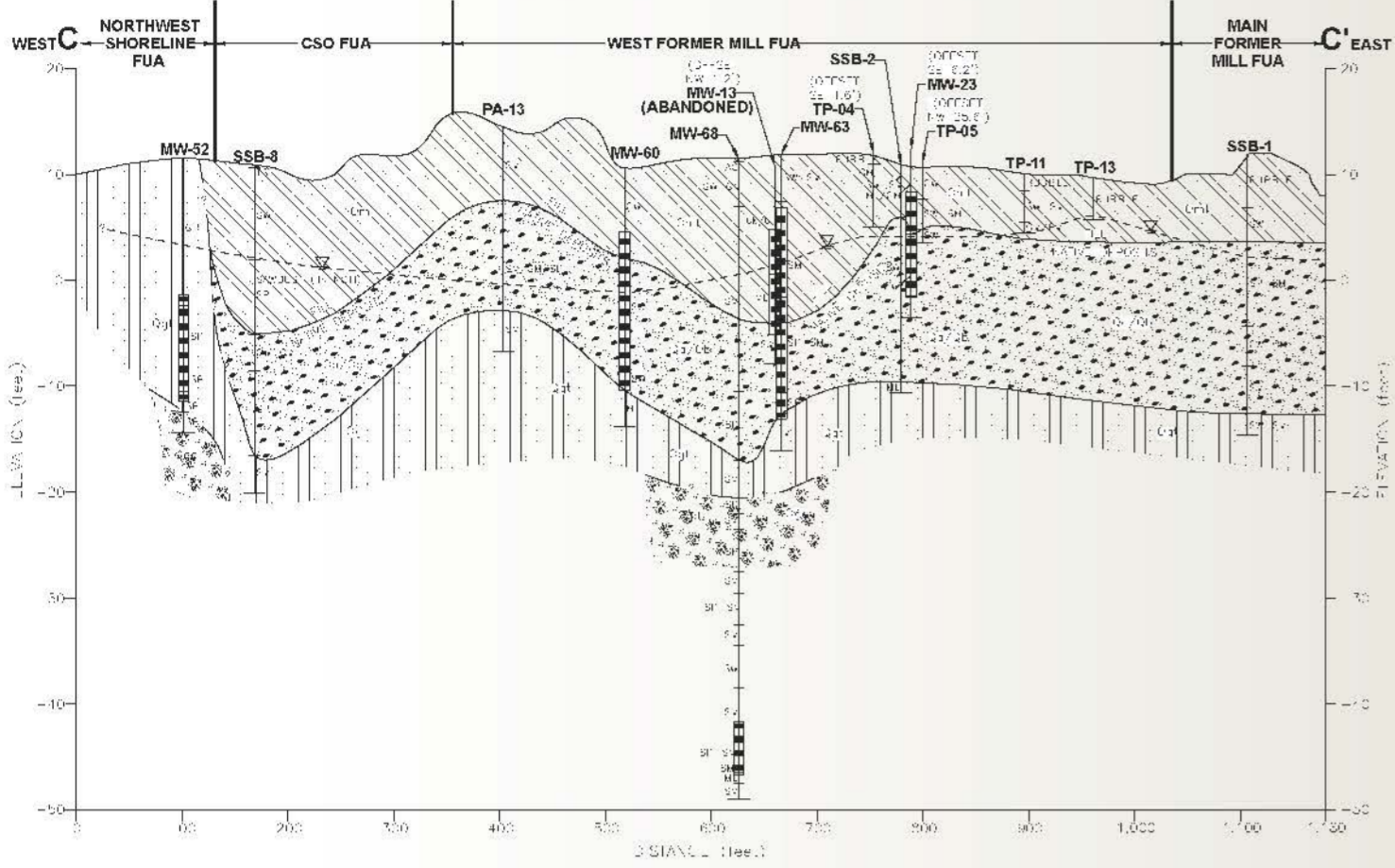
Inner Circle: Results for soil >2 foot depth
 Outer Circle: Results for soil 0-2 foot depth

Metals, D/F TEC, Total PCBs, TPH, SVOCs, cPAHs TEC, VOCs, Ammonia-N

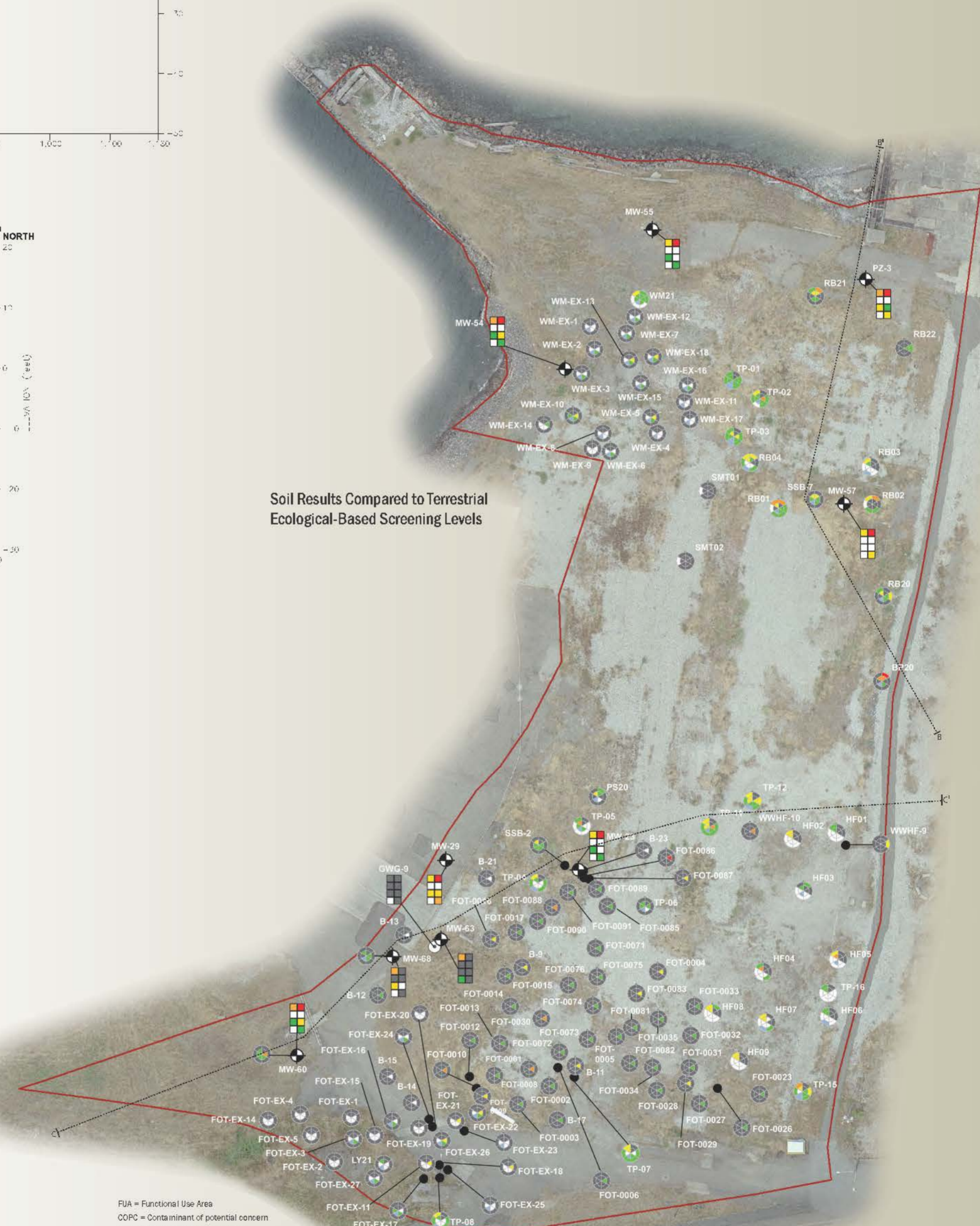
Scale: 0 to 40 Feet

West Former Mill Area

CROSS SECTION C-C' (TRUNCATED)



Soil Results Compared to Terrestrial Ecological-Based Screening Levels



COPC	Shallow Soil (0-2 feet) Range of Detected Concentrations	No. of Shallow Soil Locations with Exceedances (by Pathway)	Deep Soil (>2 feet) Range of Detected Concentrations	No. of Deep Soil Locations with Exceedances (by Pathway)	Groundwater Range of Detected Concentrations	No. of Groundwater Locations with Exceedances
TPH	5.2 to 1700 mg/kg	Soil to GW = 0 of 16 (1)* TEE = 4 of 16 (1)* HH = 0 of 16 (1)*	4.9 to 39000 mg/kg	Soil to GW = 8 of 111 (2)* TEE = 28 of 111 (2)* HH = 8 of 111 (2)*	ND	0 of 7
cPAHs TEC	6.82 to 3467 ug/kg	Soil to GW = 2 of 25 TEE = 0 of 25 HH = 7 of 25 (9)*	3.7495 to 2931 ug/kg	Soil to GW = 5 of 72 TEE = 0 of 72 HH = 15 of 72 (12)*	0.0071 to 0.10749 ug/L	3 of 8
SVOCs	9.9 to 5000 ug/kg	Soil to GW = 2 of 25 (3)* TEE = 0 of 25 HH = 0 of 25	5 to 15000 ug/kg	Soil to GW = 2 of 72 (5)* TEE = 0 of 72 HH = 0 of 72	0.01 to 4.9 ug/L	3 of 8
Total PCBs	0.18 to 0.515 mg/kg	Soil to GW = 10 of 27 (15)* TEE = 0 of 27 HH = 1 of 27	0.0041 to 2.1 mg/kg	Soil to GW = 13 of 65 (51)* TEE = 2 of 65 HH = 2 of 65	ND	0 of 7
Metals	0.02 to 2300 mg/kg	Soil to GW = 10 of 26 TEE = 17 of 26 HH = 2 of 26	0.02 to 14100 mg/kg	Soil to GW = 16 of 34 TEE = 20 of 34 HH = 5 of 34	3.56E-05 to 4.34 mg/L	9 of 9
D/F TEC	0.444 to 525.673 ng/kg	Soil to GW = 5 of 9 TEE = 5 of 9 HH = 5 of 9	0.243 to 68.308 ng/kg	Soil to GW = 3 of 7 TEE = 3 of 7 HH = 2 of 7	1.32 to 62.4 pg/L	7 of 7
VOCs	ND**	Soil to GW = 0 of 13 TEE = 0 of 13 HH = 0 of 13	ND**	Soil to GW = 0 of 16 TEE = 0 of 16 HH = 0 of 16	0.2 to 2.7 ug/L	0 of 10
Ammonia-N (un-ionized)	N/A	N/A	N/A	N/A	0.000629 to 0.542 mg/L	3 of 7

FUA = Functional Use Area
 COPC = Contaminant of potential concern
 TPH = Total petroleum hydrocarbons
 cPAHs = Carcinogenic polycyclic aromatic hydrocarbons
 SVOCs = Semivolatile organic compounds
 PCBs = Polychlorinated biphenyls
 D/F = Dioxins/furans
 VOCs = Volatile organic compounds
 Ammonia-N = Ammonia as nitrogen
 TEC = Toxic equivalent concentration
 GW = Groundwater
 TEE = Terrestrial ecological
 HH = Human health direct-contact
 mg/kg = Milligrams per kilogram
 ug/kg = Micrograms per kilogram
 ng/kg = Nanograms per kilogram
 mg/L = Milligrams per liter
 ug/L = Micrograms per liter
 pg/L = Picograms per liter
 SLS = Screening levels
 N/A = Not analyzed
 ND = Not detected

* = The number shown in parentheses indicates the number of locations where more than half of the non-detect COPC results had analytical reporting limits above SLS for this pathway.
 ** = A limited number of VOCs were detected, but the detected VOCs are not considered COPCs for the Upland Study Area.

GROUNDWATER
 COPC Concentrations Relative to SLS Perspective of Inland Surface Water

Metals	D/F TEC
Total PCBs	TPH
SVOCs	cPAHs TEC
VOCs	Ammonia-N (un-ionized)

Box colors represent the maximum COPC concentrations detected in 2010-2011 relative to SLS.

SOIL
 COPC Concentrations Relative to Applicable SLS

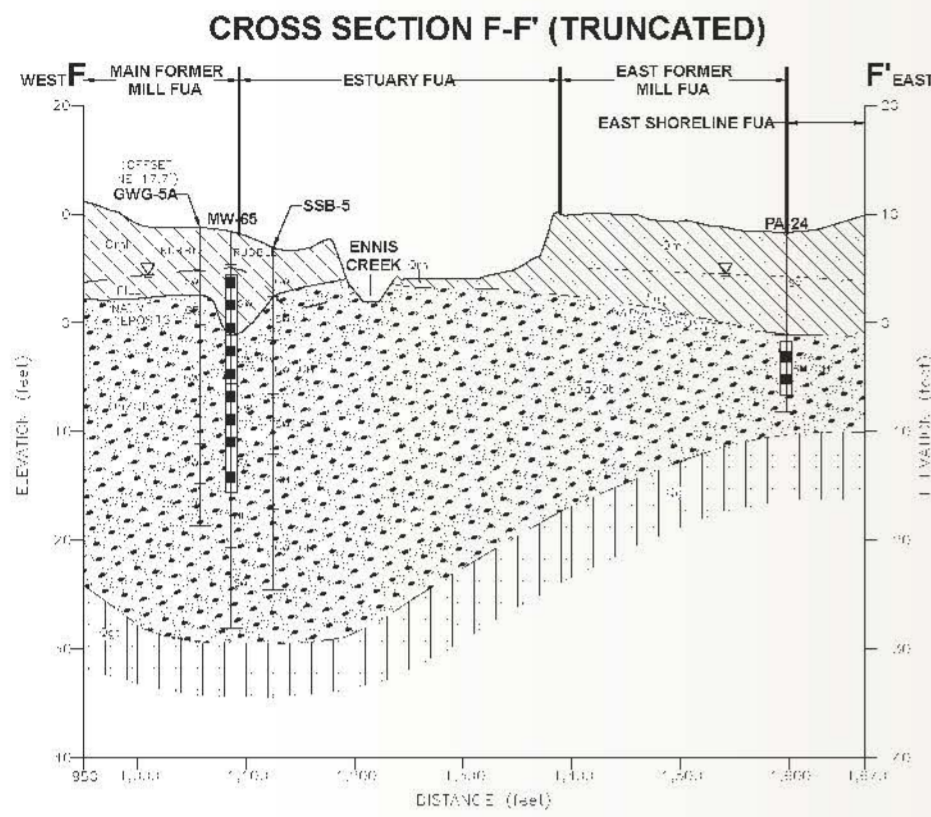
Inner Circle: Results for soil > 2 feet depth

Outer Circle: Results for soil < 2 feet depth

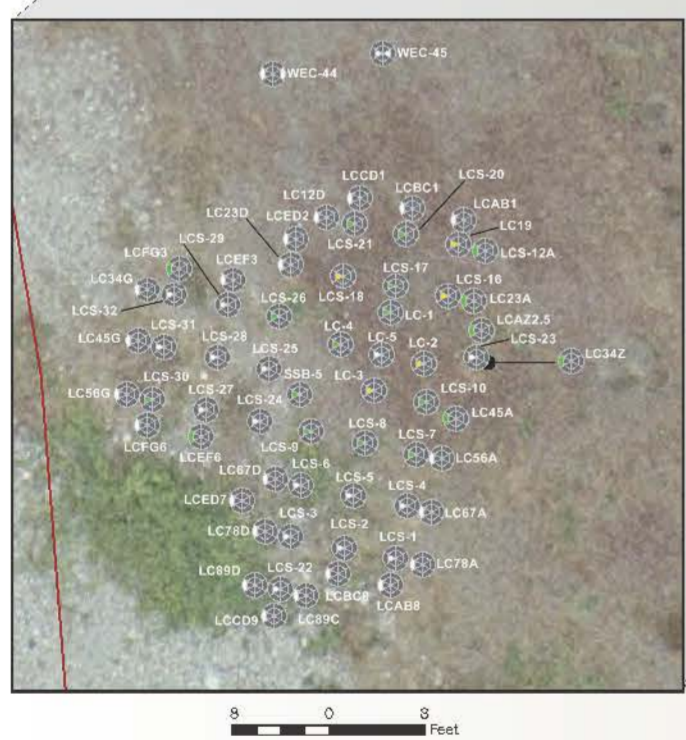
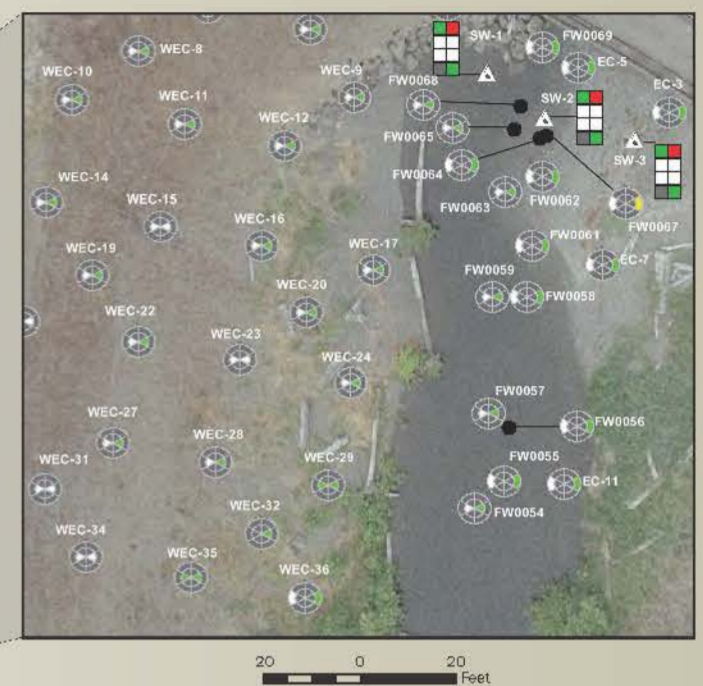
Legend:
 - Not analyzed
 - No detections
 - At least one detection - SLS not established
 - At least one detection, but none > SLS
 - At least one detection > SLS, but none ≥ 10x SLS
 - At least one detection ≥ 10x SLS, but none ≥ 100x SLS
 - At least one detection ≥ 100x SLS

Monitoring well

Scale: 40 0 40 Feet



Soil Results Compared to Human Health-Based (Direct Contact) Screening Levels



COPC	Shallow Soil (0-2 feet) Range of Detected Concentrations	No. of Shallow Soil Locations with Exceedances (by Pathway)	Deep Soil (>2 feet) Range of Detected Concentrations	No. of Deep Soil Locations with Exceedances (by Pathway)	Groundwater Range of Detected Concentrations	No. of Groundwater Locations with Exceedances	Surface Water Range of Detected Concentrations	No. of Surface Water Locations with Exceedances
TPH	6.2 to 6600 mg/kg	Soil to GW = 2 of 32 TEE = 9 of 32 HH = 2 of 32	18 to 1700 mg/kg	Soil to GW = 0 of 42 TEE = 18 of 42 HH = 0 of 42	ND	0 of 1	ND	0 of 3
cPAHs TEC	106 to 415.2 ug/kg	Soil to GW = 1 of 4 TEE = 0 of 4 HH = 2 of 4	3.915 to 270.33 ug/kg	Soil to GW = 0 of 3 TEE = 0 of 3 HH = 1 of 3 (1)*	ND	0 of 1	ND	0 of 3
SVOCs	43 to 400 ug/kg	Soil to GW = 1 of 4 (2)* TEE = 0 of 4 HH = 0 of 4	9.4 to 230 ug/kg	Soil to GW = 0 of 3 TEE = 0 of 3 HH = 0 of 3	ND	0 of 1	ND	0 of 3
Total PCBs	0.0064 to 0.41 mg/kg	Soil to GW = 12 of 65 (42)* TEE = 0 of 65 HH = 0 of 65	0.0065 to 1.6 mg/kg	Soil to GW = 21 of 76 (25)* TEE = 2 of 76 HH = 5 of 76	ND	0 of 1	ND	0 of 3
Metals	0.01 to 610 mg/kg	Soil to GW = 5 of 5 TEE = 5 of 5 HH = 0 of 5	0.02 to 475 mg/kg	Soil to GW = 1 of 2 TEE = 1 of 2 HH = 1 of 2	0.001 to 0.277 mg/L	1 of 1	0.0002 to 0.0127 mg/L	0 of 3
D/F TEC	0.664 to 118.899 ng/kg	Soil to GW = 1 of 2 TEE = 1 of 2 HH = 1 of 2	N/A	N/A	1.72 to 1.78 pg/L	1 of 1	1.11 to 1.3 pg/L	3 of 3
VOCs	ND	Soil to GW = 0 of 2 TEE = 0 of 2 HH = 0 of 2	ND**	Soil to GW = 0 of 1 TEE = 0 of 1 HH = 0 of 1	N/A	N/A	N/A	N/A
Ammonia-N (un-ionized)	N/A	N/A	N/A	N/A	0.0004 to 0.29 mg/L	1 of 1	8.62E-05 to 0.0001028 mg/L	0 of 3

FUA = Functional Use Area
COPC = Contaminant of potential concern
TPH = Total petroleum hydrocarbons
cPAHs = Carcinogenic polycyclic aromatic hydrocarbons
SVOCs = Semivolatile organic compounds
PCBs = Polychlorinated biphenyls
D/F = Dioxins/furans
VOCs = Volatile organic compounds
Ammonia-N = Ammonia as nitrogen
TEC = Toxic equivalent concentration
GW = Groundwater
TEE = Terrestrial ecological
HH = Human health direct-contact
mg/kg = Milligrams per kilogram
ug/kg = Micrograms per kilogram
ng/kg = Nanograms per kilogram
mg/L = Milligrams per liter
ug/L = Micrograms per liter
pg/L = Picograms per liter
SLs = Screening levels
ND = Not detected

* = The number shown in parentheses indicates the number of locations where more than half of the non-detect COPC results had analytical reporting limits above SLs for this pathway.
** = A limited number of VOCs were detected, but the detected VOCs are not considered COPCs for the Upland Study Area.

GROUNDWATER
COPC Concentrations Relative to SLs Protective of Aquatic Surface Water

SOIL
COPC Concentrations Relative to Applicable SLs

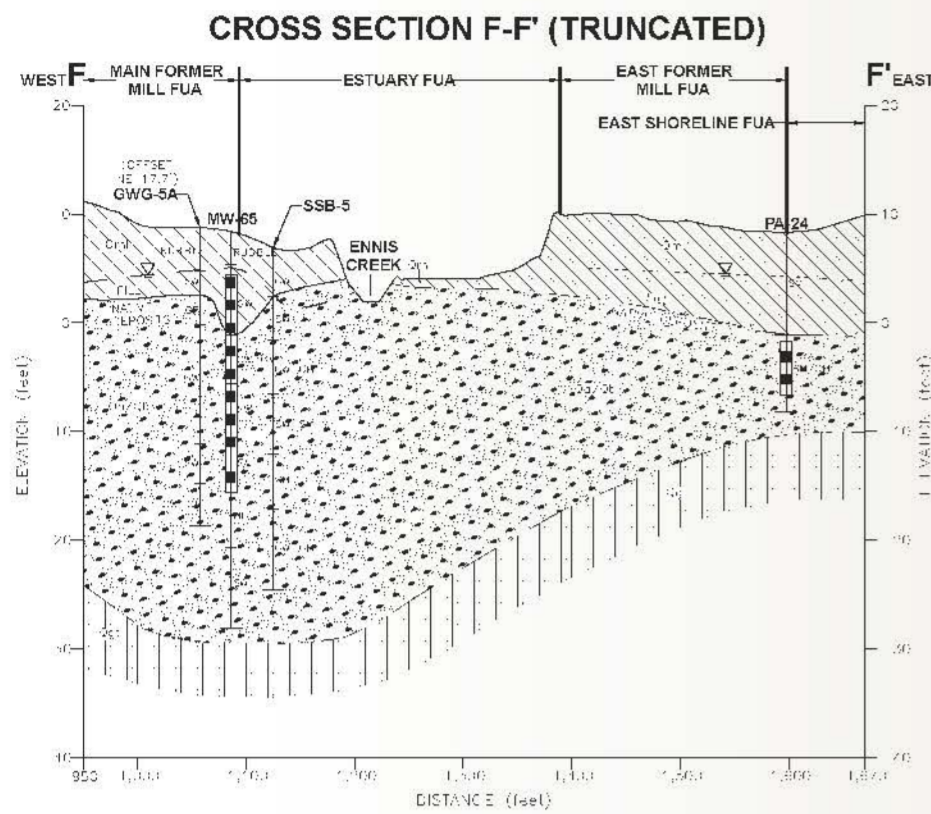
Monitoring well

- Not analyzed
- No detections
- At least one detection-SLs not established
- At least one detection, but none > SLs
- At least one detection > SLs, but none > 10x SLs
- At least one detection > 10x SLs, but none > 100x SLs
- At least one detection > 100x SLs

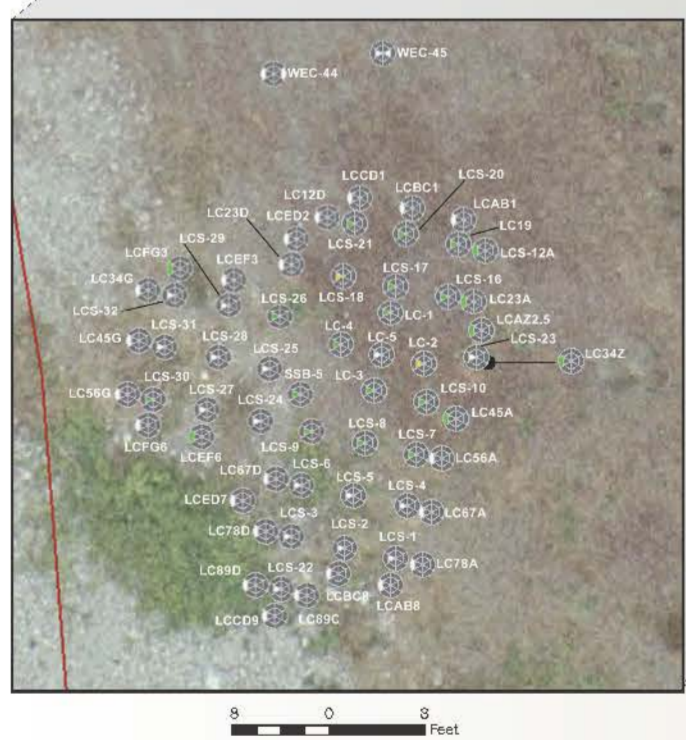
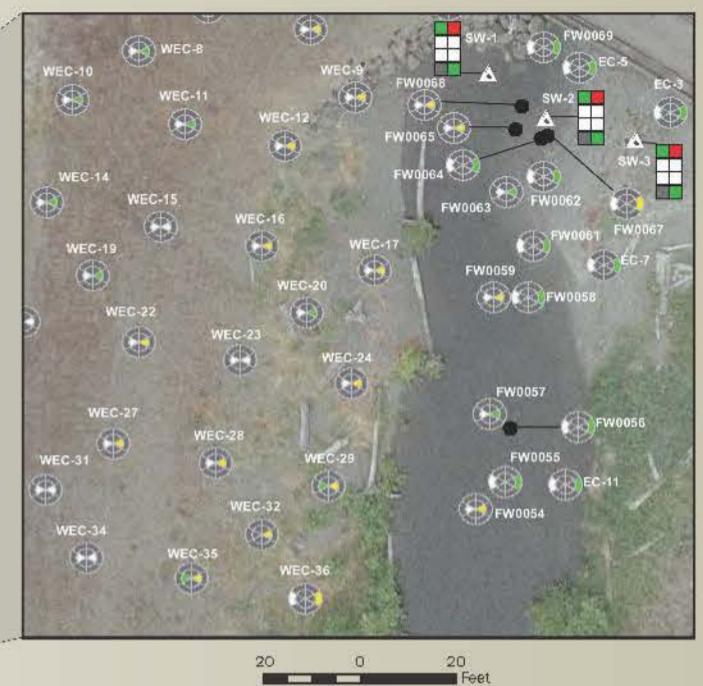
Box colors represent the maximum COPC concentrations detected in 2010-2011 relative to SLs.

Metals, Total PCBs, SVOCs, VOCs, D/F TEC, TPH, cPAHs TEC, Ammonia-N (un-ionized)

Inner Circle: Results for soil >2 feet depth
Outer Circle: Results for soil 0-2 foot depth



Soil Results Compared to Terrestrial Ecological-Based Screening Levels



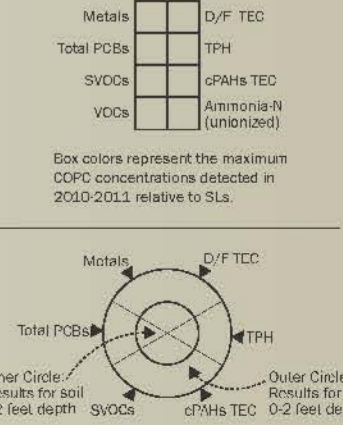
COPC	Shallow Soil (0-2 feet) Range of Detected Concentrations	No. of Shallow Soil Locations with Exceedances (by Pathway)	Deep Soil (>2 feet) Range of Detected Concentrations	No. of Deep Soil Locations with Exceedances (by Pathway)	Groundwater Range of Detected Concentrations	No. of Groundwater Locations with Exceedances	Surface Water Range of Detected Concentrations	No. of Surface Water Locations with Exceedances
TPH	6.2 to 6600 mg/kg	Soil to GW = 2 of 32 TEE = 9 of 32 HH = 2 of 32	18 to 1700 mg/kg	Soil to GW = 0 of 42 TEE = 18 of 42 HH = 0 of 42	ND	0 of 1	ND	0 of 3
cPAHs TEC	106 to 415.2 ug/kg	Soil to GW = 1 of 4 TEE = 0 of 4 HH = 2 of 4	3.915 to 270.33 ug/kg	Soil to GW = 0 of 3 TEE = 0 of 3 HH = 1 of 3 (1)*	ND	0 of 1	ND	0 of 3
SVOCs	43 to 400 ug/kg	Soil to GW = 1 of 4 (2)* TEE = 0 of 4 HH = 0 of 4	9.4 to 230 ug/kg	Soil to GW = 0 of 3 TEE = 0 of 3 HH = 0 of 3	ND	0 of 1	ND	0 of 3
Total PCBs	0.0064 to 0.41 mg/kg	Soil to GW = 12 of 65 (42)* TEE = 0 of 65 HH = 0 of 65	0.0065 to 1.6 mg/kg	Soil to GW = 21 of 76 (25)* TEE = 2 of 76 HH = 5 of 76	ND	0 of 1	ND	0 of 3
Metals	0.01 to 610 mg/kg	Soil to GW = 5 of 5 TEE = 5 of 5 HH = 0 of 5	0.02 to 475 mg/kg	Soil to GW = 1 of 2 TEE = 1 of 2 HH = 1 of 2	0.001 to 0.277 mg/L	1 of 1	0.0002 to 0.0127 mg/L	0 of 3
D/F TEC	0.664 to 118.898 ng/kg	Soil to GW = 1 of 2 TEE = 1 of 2 HH = 1 of 2	N/A	N/A	1.72 to 1.78 pg/L	1 of 1	1.11 to 1.3 pg/L	3 of 3
VOCs	ND	Soil to GW = 0 of 2 TEE = 0 of 2 HH = 0 of 2	ND**	Soil to GW = 0 of 1 TEE = 0 of 1 HH = 0 of 1	N/A	N/A	N/A	N/A
Ammonia-N (un-ionized)	N/A	N/A	N/A	N/A	0.0004 to 0.29 mg/L	1 of 1	8.62E-05 to 0.0001028 mg/L	0 of 3

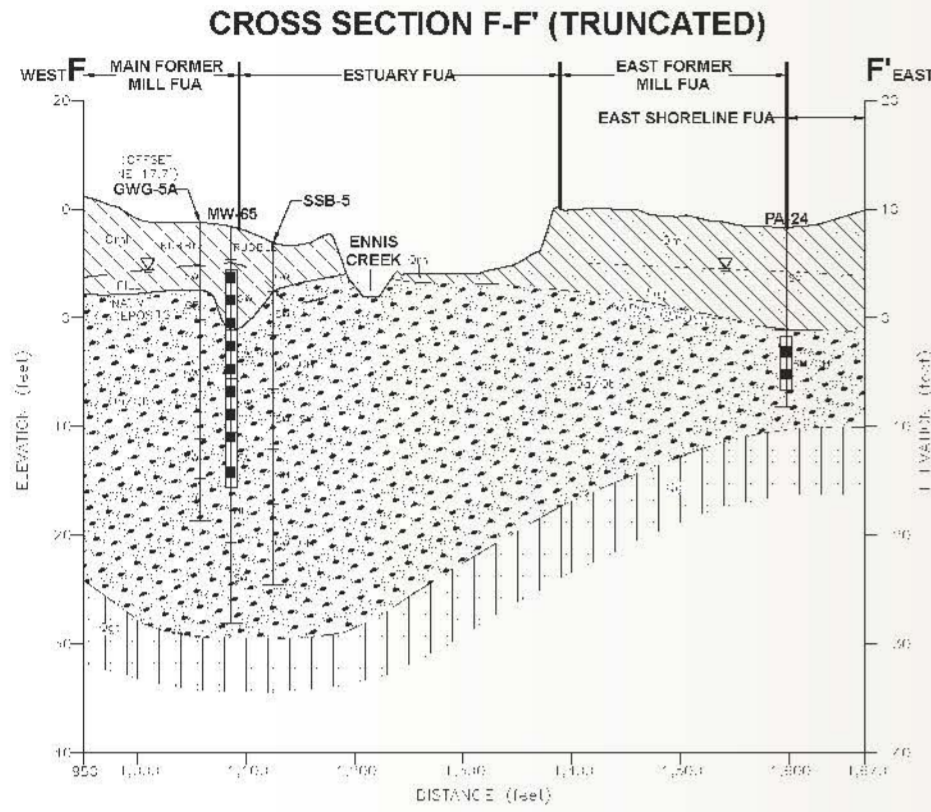
FUA = Functional Use Area
COPC = Contaminant of potential concern
TPH = Total petroleum hydrocarbons
cPAHs = Carcinogenic polycyclic aromatic hydrocarbons
SVOCs = Semivolatile organic compounds
PCBs = Polychlorinated biphenyls
D/F = Dioxin/furans
VOCs = Volatile organic compounds
Ammonia-N = Ammonia as nitrogen
TEC = Toxic equivalent concentration
GW = Groundwater
TEE = Terrestrial ecological
HH = Human health direct contact
mg/kg = Milligrams per kilogram
ug/kg = Micrograms per kilogram
ng/kg = Nanograms per kilogram
mg/L = Milligrams per liter
ug/L = Micrograms per liter
pg/L = Picograms per liter
SLs = Screening levels
N/A = Not analyzed
ND = Not detected
* = The number shown in parentheses indicates the number of locations where more than half of the non-detect COPC results had analytical reporting limits above SLs for this pathway.
** = A limited number of VOCs were detected, but the detected VOCs are not considered COPCs for the Upland Study Area.

Monitoring well

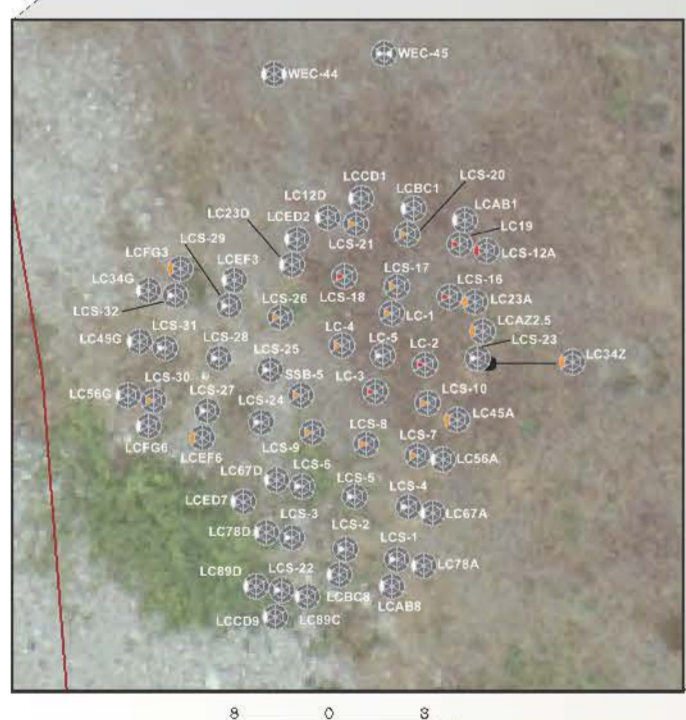
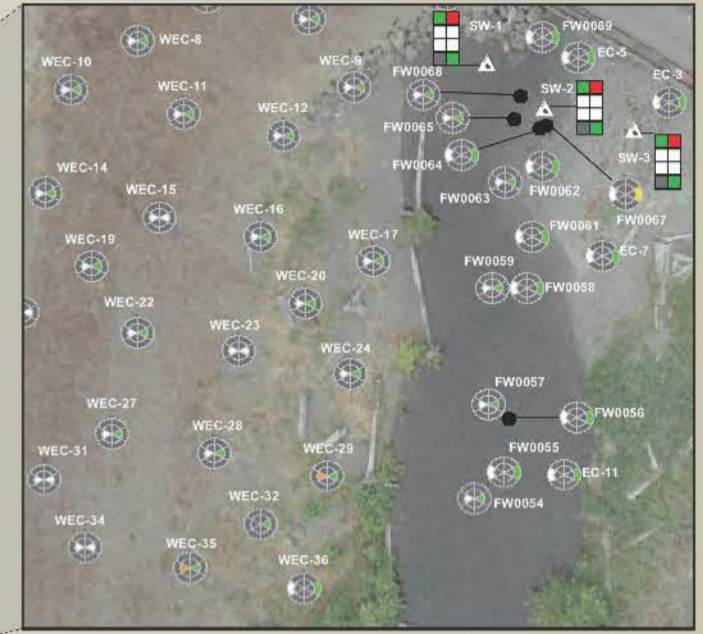
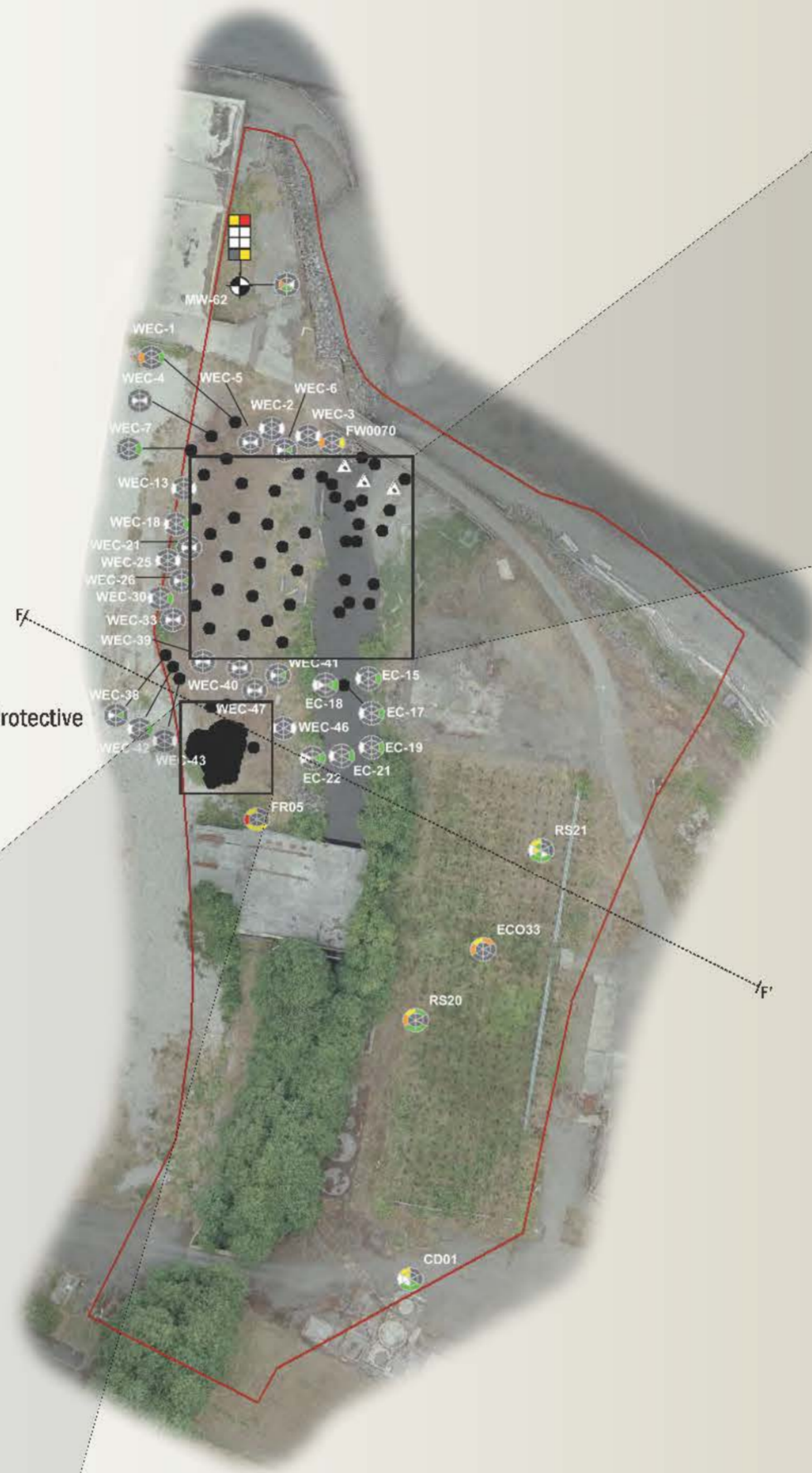
- Not analyzed
- No detections
- At least one detection - SLs not established
- At least one detection, but none > SLs
- At least one detection > 10x SLs, but none > 100x SLs
- At least one detection > 100x SLs
- At least one detection > 1000x SLs

GROUNDWATER
COPC Concentrations
Relative to SLs
Relative to Applicable SLs





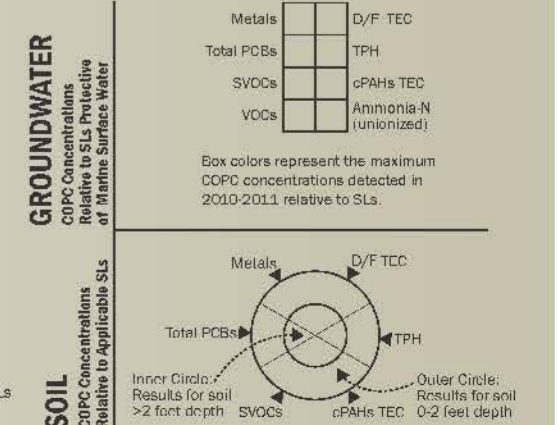
Soil Results Compared to Screening Levels Protective of Groundwater as Marine Surface Water



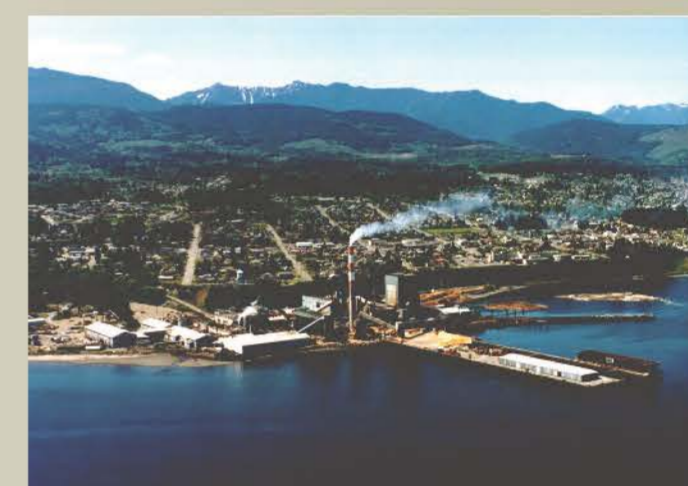
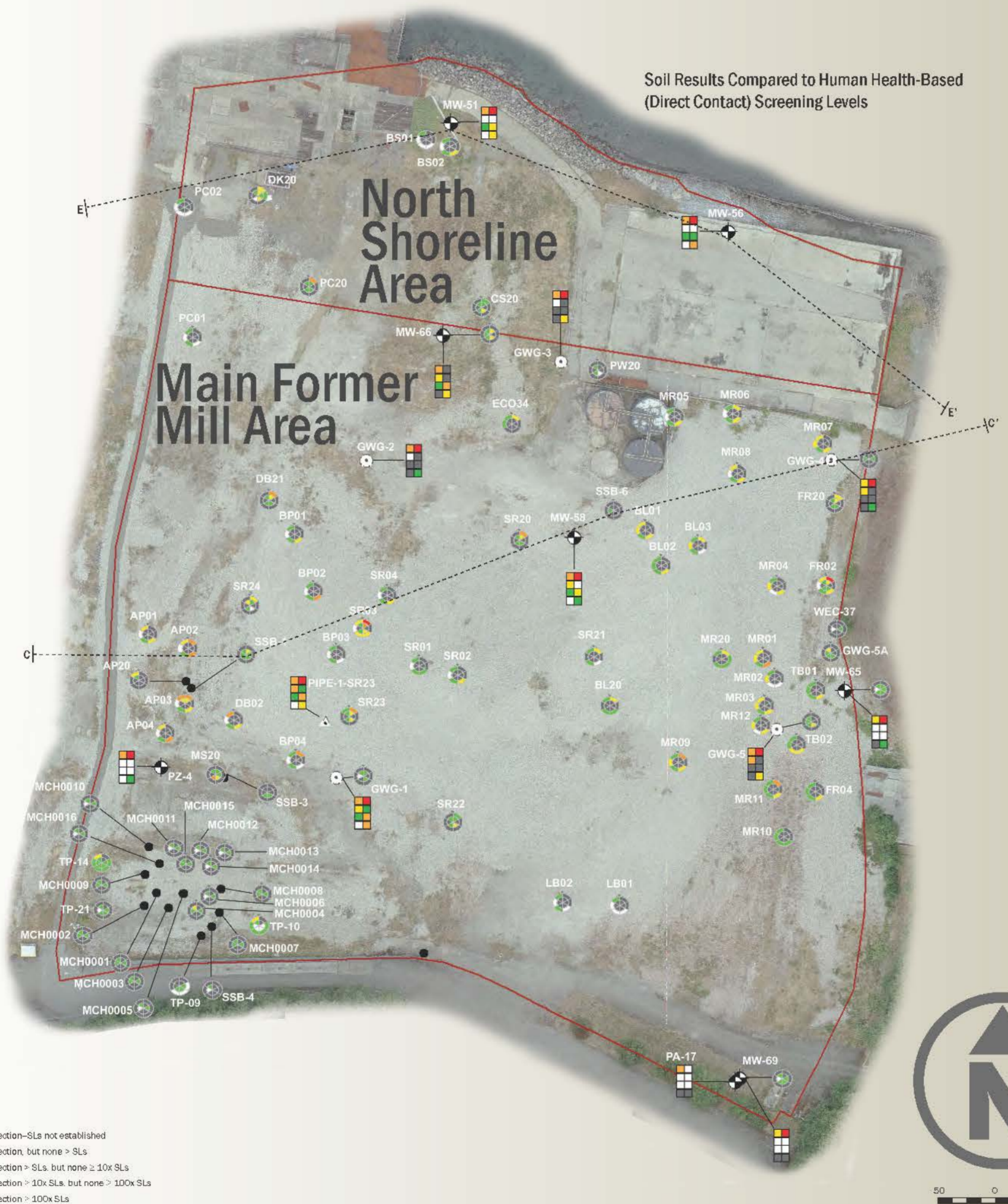
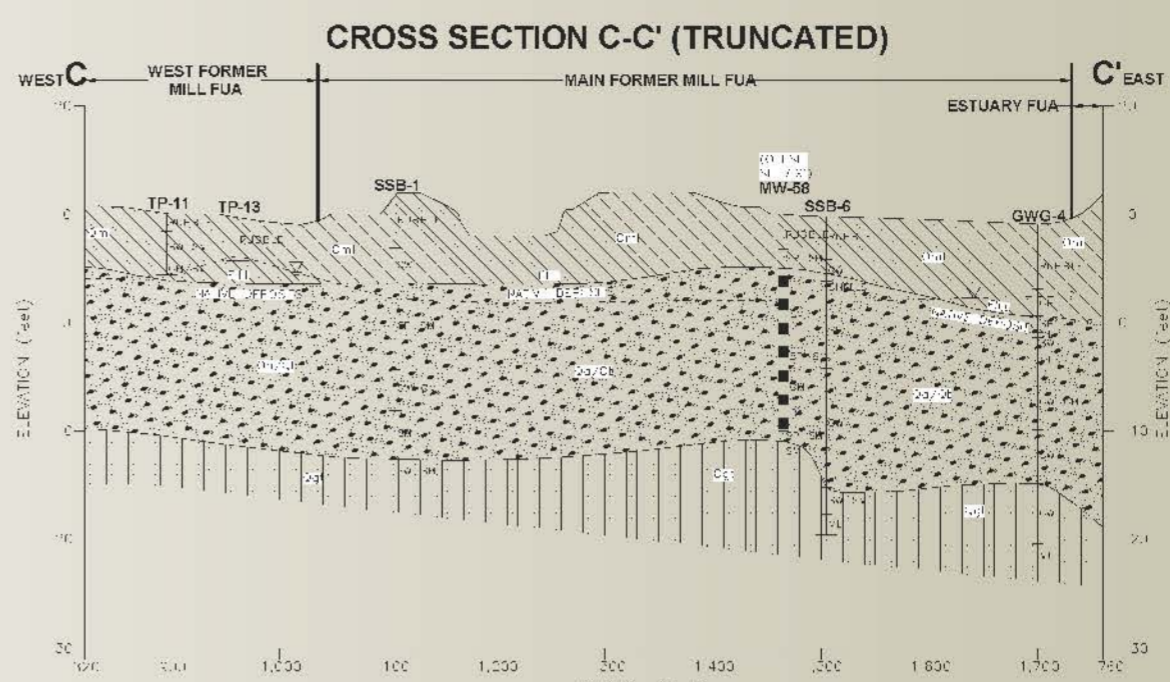
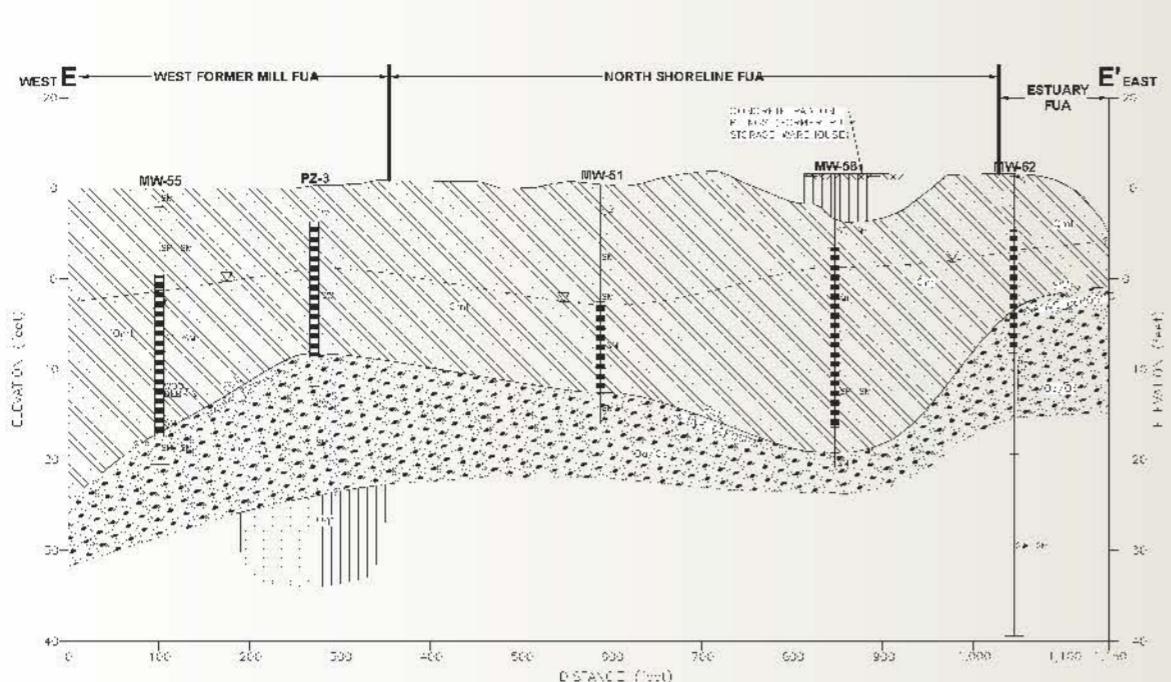
COPC	Shallow Soil (0-2 feet) Range of Detected Concentrations	No. of Shallow Soil Locations with Exceedances (by Pathway)	Deep Soil (>2 feet) Range of Detected Concentrations	No. of Deep Soil Locations with Exceedances (by Pathway)	Groundwater Range of Detected Concentrations	No. of Groundwater Locations with Exceedances	Surface Water Range of Detected Concentrations	No. of Surface Water Locations with Exceedances
TPH	6.2 to 6600 mg/kg	Soil to GW = 2 of 32 TEE = 9 of 32 HH = 2 of 32	18 to 1700 mg/kg	Soil to GW = 0 of 42 TEE = 18 of 42 HH = 0 of 42	ND	0 of 1	ND	0 of 3
cPAHs TEC	106 to 415.2 ug/kg	Soil to GW = 1 of 4 TEE = 0 of 4 HH = 2 of 4	3.915 to 270.33 ug/kg	Soil to GW = 0 of 3 TEE = 0 of 3 HH = 1 of 3 (1)*	ND	0 of 1	ND	0 of 3
SVOCs	43 to 400 ug/kg	Soil to GW = 1 of 4 (2)* TEE = 0 of 4 HH = 0 of 4	9.4 to 230 ug/kg	Soil to GW = 0 of 3 TEE = 0 of 3 HH = 0 of 3	ND	0 of 1	ND	0 of 3
Total PCBs	0.0064 to 0.41 mg/kg	Soil to GW = 12 of 65 (42)* TEE = 0 of 65 HH = 0 of 65	0.0065 to 1.6 mg/kg	Soil to GW = 21 of 76 (25)* TEE = 2 of 76 HH = 5 of 76	ND	0 of 1	ND	0 of 3
Metals	0.01 to 610 mg/kg	Soil to GW = 5 of 5 TEE = 5 of 5 HH = 0 of 5	0.02 to 475 mg/kg	Soil to GW = 1 of 2 TEE = 1 of 2 HH = 1 of 2	0.001 to 0.277 mg/L	1 of 1	0.0002 to 0.0127 mg/L	0 of 3
D/F TEC	0.664 to 118.898 ng/kg	Soil to GW = 1 of 2 TEE = 1 of 2 HH = 1 of 2	N/A	N/A	1.72 to 1.78 pg/L	1 of 1	1.11 to 1.3 pg/L	3 of 3
VOCs	ND	Soil to GW = 0 of 2 TEE = 0 of 2 HH = 0 of 2	ND**	Soil to GW = 0 of 1 TEE = 0 of 1 HH = 0 of 1	N/A	N/A	N/A	N/A
Ammonia-N (un-ionized)	N/A	N/A	N/A	N/A	0.0004 to 0.29 mg/L	1 of 1	8.62E-05 to 0.0001028 mg/L	0 of 3

FUA = Functional Use Area
 COPC = Contaminant of potential concern
 TPH = Total petroleum hydrocarbons
 cPAHs = Carcinogenic polycyclic aromatic hydrocarbons
 SVOCs = Semivolatile organic compounds
 PCBs = Polychlorinated biphenyls
 D/F = Dioxins/furans
 VOCs = Volatile organic compounds
 Ammonia-N = Ammonia as nitrogen
 TEC = Toxic equivalent concentration
 GW = Groundwater
 TEE = Terrestrial ecological
 HH = Human health direct-contact
 mg/kg = Milligrams per kilogram
 ug/kg = Micrograms per kilogram
 ng/kg = Nanograms per kilogram
 mg/L = Milligrams per liter
 ug/L = Micrograms per liter
 pg/L = Picograms per liter
 SLs = Screening levels
 N/A = Not analyzed
 ND = Not detected
 * = The number shown in parentheses indicates the number of locations where more than half of the non-detect COPC results had analytical reporting limits above SLs for this pathway.
 ** = A limited number of VOCs were detected, but the detected VOCs are not considered COPCs for the Upland Study Area.

- Monitoring well
- Not analyzed
- No detections
- At least one detection - SLs not established
- At least one detection, but none > SLs
- At least one detection > SLs, but none ≥ 10x SLs
- At least one detection ≥ 10x SLs, but none ≥ 100x SLs
- At least one detection ≥ 100x SLs



Main Former Mill/North Shoreline Areas



FUA = Functional Use Area
 COPC = Contaminant of potential concern
 TPH = Total petroleum hydrocarbons
 oPAHs = Carcinogenic polycyclic aromatic hydrocarbons
 SVOCs = Semivolatile organic compounds
 PCBs = Polychlorinated biphenyls
 D/F = Dioxins/furans
 VOCs = Volatile organic compounds
 Ammonia-N = Ammonia as nitrogen
 TEC = Toxic equivalent concentration
 GW = Groundwater
 TEE = Terrestrial ecological
 HH = Human health direct contact
 mg/kg = Milligrams per kilogram
 ug/kg = Micrograms per kilogram
 ng/kg = Nanograms per kilogram
 mg/L = Milligrams per liter
 ug/L = Micrograms per liter
 pg/L = Picograms per liter
 SLs = Screening levels
 N/A = Not analyzed
 ND = Not detected

* = The number shown in parentheses indicates the number of locations where more than half of the non-detected COPC results had analytical reporting limits above SLs for this pathway.
 ** = A limited number of VOCs were detected, but the detected VOCs are not considered COPCs for the Upland Study Area.

Monitoring well

- Not analyzed
- No detections
- At least one detection—SLs not established
- At least one detection, but none > SLs
- At least one detection > SLs, but none ≥ 10x SLs
- At least one detection > 10x SLs, but none > 100x SLs
- At least one detection > 100x SLs

GROUNDWATER
 COPC Concentrations Relative to Applicable SLs

SOIL
 COPC Concentrations Relative to Applicable SLs

Box colors represent the maximum COPC concentrations detected in 2010-2011 relative to SLs.

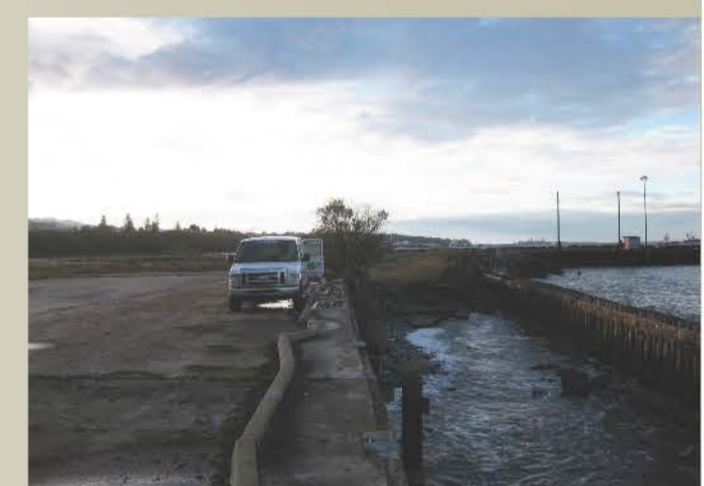
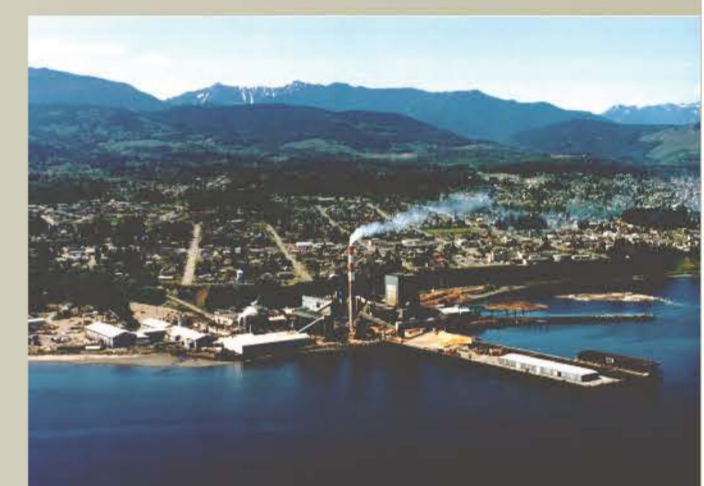
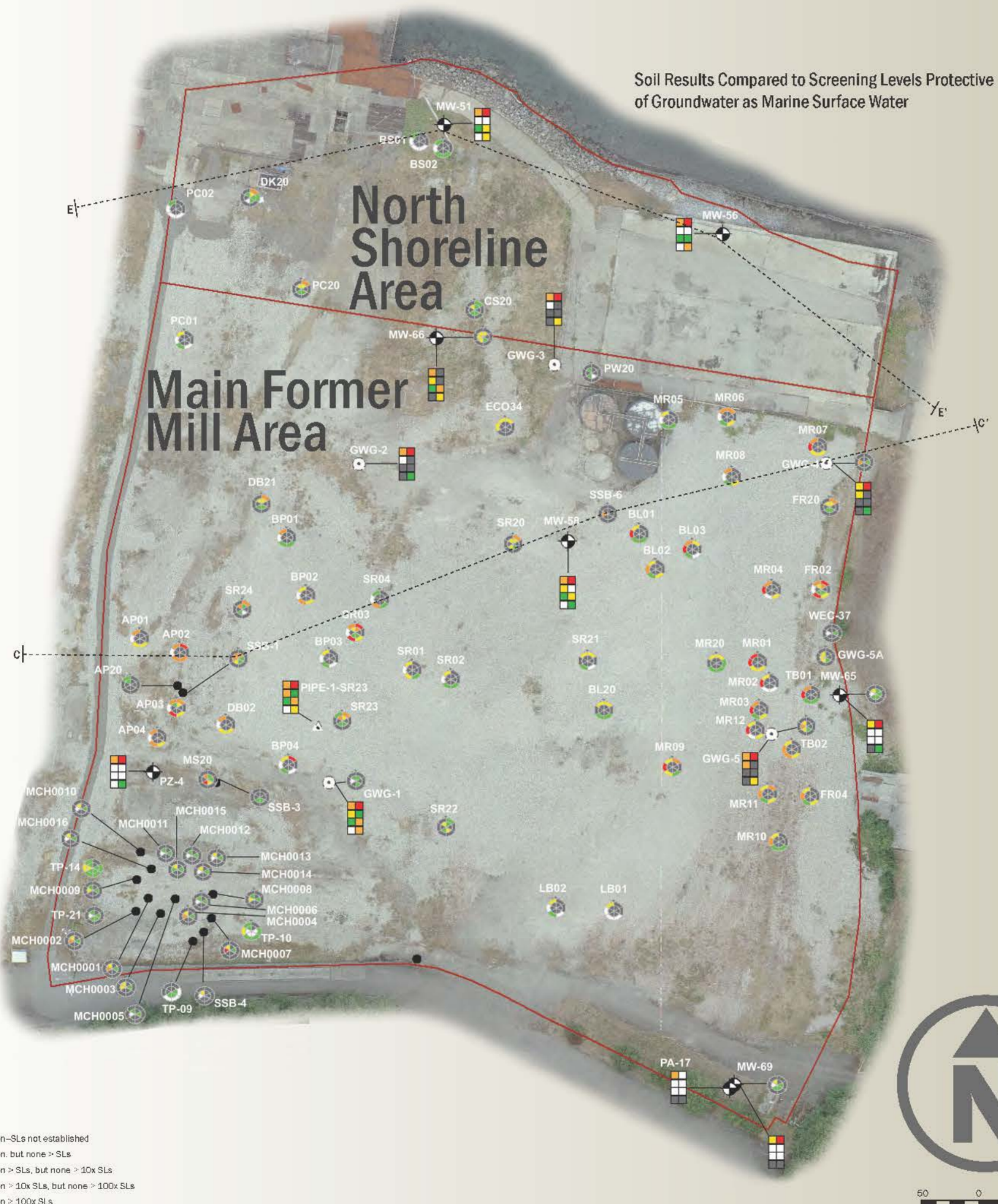
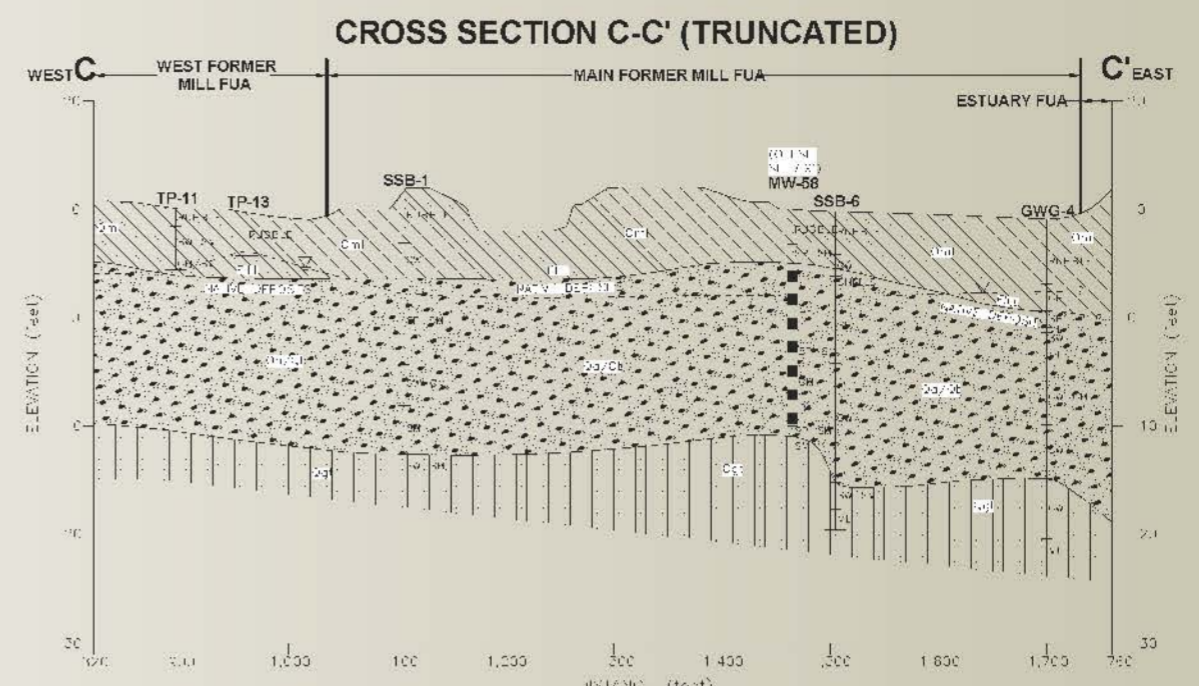
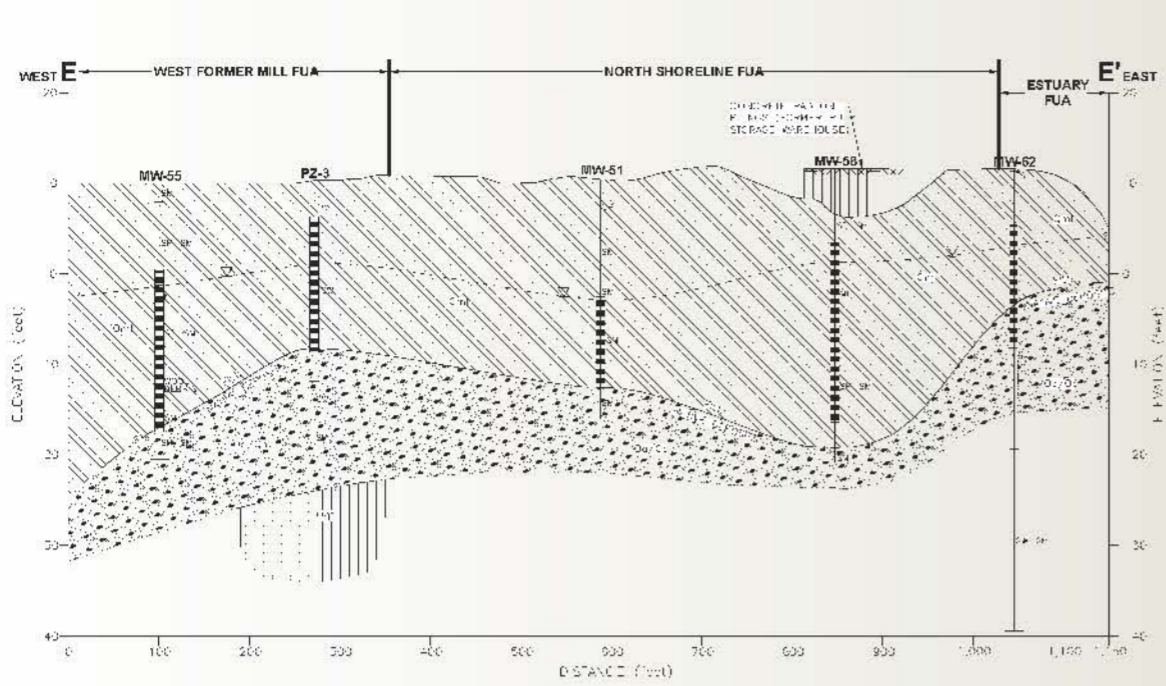
Inner Circle: Results for soil >2 feet depth
 Outer Circle: Results for soil 0-2 feet depth

MAIN FORMER MILL AREA

COPC	Shallow Soil (0-2 feet) Range of Detected Concentrations	No. of Shallow Soil Locations with Exceedances (by Pathway)	Deep Soil (>2 feet) Range of Detected Concentrations	No. of Deep Soil Locations with Exceedances (by Pathway)	Groundwater Range of Detected Concentrations	No. of Groundwater Locations with Exceedances
TPH	18 to 1300 mg/kg	Soil to GW = 0 of 4 (1)* TEE = 1 of 4 HH = 0 of 4 (1)*	5 to 2000 mg/kg	Soil to GW = 0 of 26 TEE = 5 of 26 HH = 0 of 26	0.1 to 0.12 mg/L	0 of 7
oPAHs TEC	18.99 to 4937 ug/kg	Soil to GW = 19 of 41 (3)* TEE = 0 of 41 HH = 26 of 41 (8)**	3.282 to 1202.94 ug/kg	Soil to GW = 2 of 22 TEE = 0 of 22 HH = 6 of 22 (2)**	0.00711 to 0.3907 ug/L	4 of 8
SVOCs	16 to 14,000,000 ug/kg	Soil to GW = 14 of 41 (9)* TEE = 5 of 41 HH = 2 of 41	6.4 to 1,800,000 ug/kg	Soil to GW = 6 of 21 (6)* TEE = 0 of 21 HH = 1 of 21	0.011 to 4.3 ug/L	0 of 8
Total PCBs	0.005 to 4.8 mg/kg	Soil to GW = 18 of 38 (20)** TEE = 8 of 38 (1)* HH = 9 of 38 (2)*	0.0017 to 0.5 mg/kg	Soil to GW = 14 of 30 (8)* TEE = 0 of 30 HH = 0 of 30	0.026 to 0.57 ug/L	6 of 12
Metals	0.017 to 7310 mg/kg	Soil to GW = 38 of 43 TEE = 42 of 43 (1)* HH = 15 of 43	0.01 to 3520 mg/kg	Soil to GW = 26 of 39 TEE = 26 of 39 (2)* HH = 4 of 39	2.57E-05 to 8.2 mg/L	12 of 12
D/F TEC	2.59 to 3046.9 ng/kg	Soil to GW = 18 of 19 TEE = 18 of 19 HH = 18 of 19	0.201 to 188,856 ng/kg	Soil to GW = 9 of 14 TEE = 9 of 14 HH = 9 of 14	1.59 to 678 pg/L	10 of 11
VOCs	ND**	Soil to GW = 0 of 35 (1)* TEE = 0 of 35 HH = 0 of 35	ND**	Soil to GW = 0 of 16 TEE = 0 of 16 HH = 0 of 16	ND**	0 of 4
Ammonia-N (un-ionized)	N/A	N/A	N/A	N/A	0.0005263 to 0.542 mg/L	5 of 10

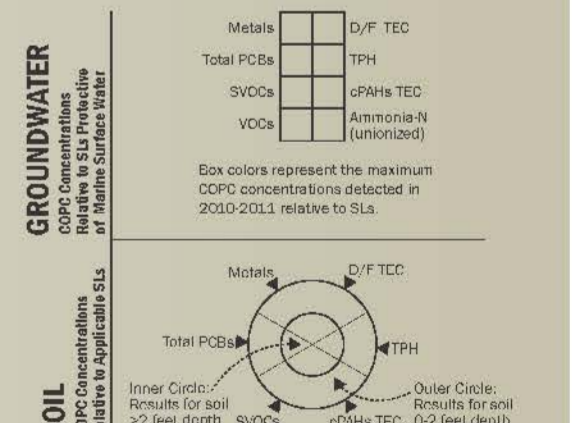
NORTH SHORELINE AREA

COPC	Shallow Soil (0-2 feet) Range of Detected Concentrations	No. of Shallow Soil Locations with Exceedances (by Pathway)	Deep Soil (>2 feet) Range of Detected Concentrations	No. of Deep Soil Locations with Exceedances (by Pathway)	Groundwater Range of Detected Concentrations	No. of Groundwater Locations with Exceedances
TPH	79 to 340 mg/kg	Soil to GW = 0 of 1 (1)* TEE = 1 of 1 HH = 0 of 1 (1)*	14 to 190 mg/kg	Soil to GW = 0 of 1 (1)* TEE = 0 of 1 HH = 0 of 1 (1)*	ND	0 of 2
oPAHs TEC	258.2 to 258.2 ug/kg	Soil to GW = 0 of 3 TEE = 0 of 3 HH = 1 of 3 (2)*	66.62 to 233.61 ug/kg	Soil to GW = 0 of 3 TEE = 0 of 3 HH = 2 of 3	0.0071 to 0.04338 ug/L	1 of 2
SVOCs	540 to 540 ug/kg	Soil to GW = 0 of 3 TEE = 0 of 3 HH = 0 of 3	43 to 110 ug/kg	Soil to GW = 0 of 3 (1)** TEE = 0 of 3 HH = 0 of 3	0.01 to 1.3 ug/L	0 of 2
Total PCBs	ND	Soil to GW = 0 of 3 (3)* TEE = 0 of 3 HH = 0 of 3	N/A	N/A	ND	0 of 2
Metals	0.17 to 289 mg/kg	Soil to GW = 0 of 3 TEE = 0 of 3 HH = 0 of 3	0.02 to 467 mg/kg	Soil to GW = 2 of 3 TEE = 2 of 3 HH = 0 of 3	4.27E-05 to 3.12 mg/L	2 of 2
D/F TEC	0.887 to 274,557 ng/kg	Soil to GW = 2 of 3 TEE = 2 of 3 HH = 2 of 3	0.815 to 27,498 ng/kg	Soil to GW = 2 of 3 TEE = 2 of 3 HH = 1 of 3	2.1 to 9.21 pg/L	2 of 2
VOCs	ND**	Soil to GW = 0 of 3 TEE = 0 of 3 HH = 0 of 3	N/A	N/A	ND**	0 of 2
Ammonia-N (un-ionized)	N/A	N/A	N/A	N/A	0.0048 to 3.02702 mg/L	2 of 2



FUA = functional Use Area
 COPC = Contaminant of potential concern
 TPH = Total petroleum hydrocarbons
 cPAHs = Carcinogenic polycyclic aromatic hydrocarbons
 SVOCs = Semivolatile organic compounds
 PCBs = Polychlorinated biphenyls
 D/F = Dioxins/furans
 VOCs = Volatile organic compounds
 Ammonia-N = Ammonia as nitrogen
 TEC = Toxic equivalent concentration
 GW = Groundwater
 TEE = Terrestrial ecological
 HH = Human health direct contact
 mg/kg = Milligrams per kilogram
 ug/kg = Micrograms per kilogram
 ng/kg = Nanograms per kilogram
 mg/L = Milligrams per liter
 ug/L = Micrograms per liter
 pg/L = Picograms per liter
 SLs = Screening levels
 N/A = Not analyzed
 ND = Not detected

* - The number shown in parentheses indicates the number of locations where more than half of the non-detect COPC results had analytical reporting limits above SLs for this pathway.
 ** - A limited number of VOCs were detected, but the detected VOCs are not considered COPCs for the Upland Study Area.

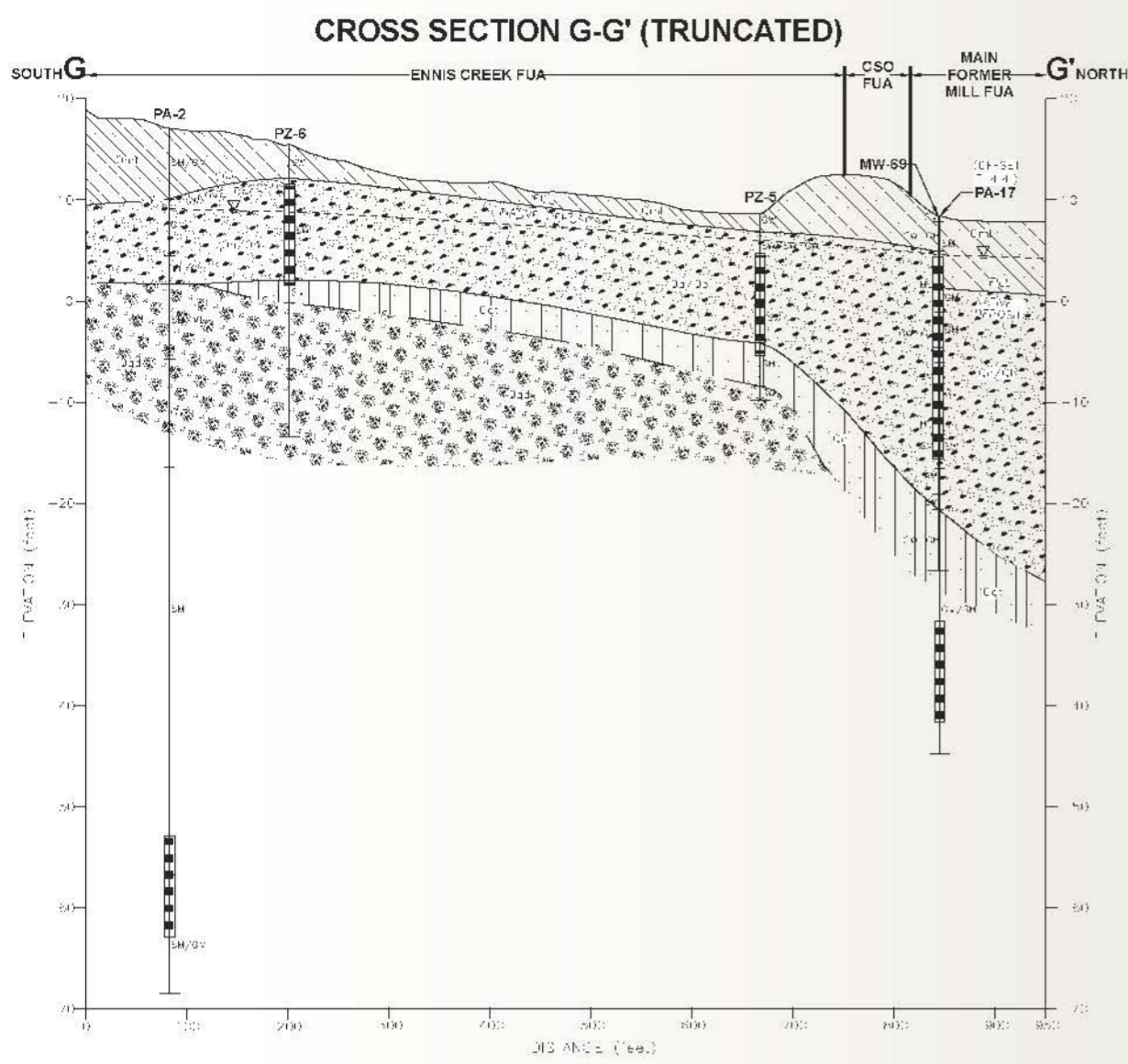


MAIN FORMER MILL AREA

COPC	Shallow Soil (0-2 feet) Range of Detected Concentrations	No. of Shallow Soil Locations with Exceedances (by Pathway)	Deep Soil (>2 feet) Range of Detected Concentrations	No. of Deep Soil Locations with Exceedances (by Pathway)	Groundwater Range of Detected Concentrations	No. of Groundwater Locations with Exceedances
TPH	18 to 1300 mg/kg	Soil to GW = 0 of 4 (1)* TEE = 1 of 4 HH = 0 of 4 (1)*	5 to 2000 mg/kg	Soil to GW = 0 of 26 TEE = 5 of 26 HH = 0 of 26	0.1 to 0.12 mg/L	0 of 7
cPAHs TEC	18.99 to 4937 ug/kg	Soil to GW = 19 of 41 (3)* TEE = 0 of 41 HH = 26 of 41 (8)*	3.282 to 1202.94 ug/kg	Soil to GW = 2 of 22 TEE = 0 of 22 HH = 6 of 22 (2)*	0.00711 to 0.3907 ug/L	4 of 8
SVOCs	16 to 14,000,000 ug/kg	Soil to GW = 14 of 41 (9)* TEE = 5 of 41 HH = 2 of 41	6.4 to 1,800,000 ug/kg	Soil to GW = 6 of 21 (6)* TEE = 0 of 21 HH = 1 of 21	0.011 to 4.3 ug/L	0 of 8
Total PCBs	0.005 to 4.8 mg/kg	Soil to GW = 18 of 38 (20)* TEE = 8 of 38 (1)* HH = 9 of 38 (2)*	0.0017 to 0.5 mg/kg	Soil to GW = 14 of 30 (8)* TEE = 0 of 30 HH = 0 of 30	0.026 to 0.57 ug/L	6 of 12
Metals	0.017 to 7310 mg/kg	Soil to GW = 38 of 43 TEE = 42 of 43 (1)* HH = 15 of 43	0.01 to 3520 mg/kg	Soil to GW = 26 of 39 TEE = 0 of 39 (2)* HH = 4 of 39	2.57E-05 to 8.2 mg/L	12 of 12
D/F TEC	2.59 to 3046.9 ng/kg	Soil to GW = 18 of 19 TEE = 18 of 19 HH = 18 of 19	0.201 to 188.856 ng/kg	Soil to GW = 9 of 14 TEE = 9 of 14 HH = 9 of 14	1.59 to 678 pg/L	10 of 11
VOCs	ND**	Soil to GW = 0 of 35 (1)* TEE = 0 of 35 HH = 0 of 35	ND**	Soil to GW = 0 of 16 TEE = 0 of 16 HH = 0 of 16	ND**	0 of 4
Ammonia-N (un-ionized)	N/A	N/A	N/A	N/A	0.0005263 to 0.542 mg/L	5 of 10

NORTH SHORELINE AREA

COPC	Shallow Soil (0-2 feet) Range of Detected Concentrations	No. of Shallow Soil Locations with Exceedances (by Pathway)	Deep Soil (>2 feet) Range of Detected Concentrations	No. of Deep Soil Locations with Exceedances (by Pathway)	Groundwater Range of Detected Concentrations	No. of Groundwater Locations with Exceedances
TPH	79 to 340 mg/kg	Soil to GW = 0 of 1 (1)* TEE = 1 of 1 HH = 0 of 1 (1)*	14 to 190 mg/kg	Soil to GW = 0 of 1 (1)* TEE = 0 of 1 HH = 0 of 1 (1)*	ND	0 of 2
cPAHs TEC	258.2 to 258.2 ug/kg	Soil to GW = 0 of 3 TEE = 0 of 3 HH = 1 of 3 (2)*	66.62 to 293.61 ug/kg	Soil to GW = 0 of 3 TEE = 0 of 3 HH = 2 of 3	0.0071 to 0.04338 ug/L	1 of 2
SVOCs	540 to 540 ug/kg	Soil to GW = 0 of 3 TEE = 0 of 3 HH = 0 of 3	43 to 110 ug/kg	Soil to GW = 0 of 3 (1)* TEE = 0 of 3 HH = 0 of 3	0.01 to 1.3 ug/L	0 of 2
Total PCBs	ND	Soil to GW = 0 of 3 (3)* TEE = 0 of 3 HH = 0 of 3	N/A	Soil to GW = 0 of 3 (1)* TEE = 0 of 3 HH = 0 of 3	ND	0 of 2
Metals	0.17 to 289 mg/kg	Soil to GW = 0 of 3 TEE = 0 of 3 HH = 0 of 3	0.02 to 467 mg/kg	Soil to GW = 2 of 3 TEE = 2 of 3 HH = 0 of 3	4.27E-05 to 3.12 mg/L	2 of 2
D/F TEC	0.887 to 274.657 ng/kg	Soil to GW = 2 of 3 TEE = 2 of 3 HH = 2 of 3	0.815 to 27.498 ng/kg	Soil to GW = 2 of 3 TEE = 2 of 3 HH = 1 of 3	2.1 to 9.21 pg/L	2 of 2
VOCs	ND**	Soil to GW = 0 of 3 TEE = 0 of 3 HH = 0 of 3	N/A	Soil to GW = 0 of 3 TEE = 0 of 3 HH = 0 of 3	ND**	0 of 2
Ammonia-N (un-ionized)	N/A	N/A	N/A	N/A	0.0048 to 3.02702 mg/L	2 of 2



Soil Results Compared to Human Health-Based (Direct Contact) Screening Levels

Soil Results Compared to Terrestrial Ecological-Based Screening Levels

Soil Results Compared to Screening Levels Protective of Groundwater as Marine Surface Water

FUA = Functional Use Area
 COPC = Contaminant of potential concern
 TPH = Total petroleum hydrocarbons
 cPAHs = Carcinogenic polycyclic aromatic hydrocarbons
 SVOCs = Semivolatile organic compounds
 PCBs = Polychlorinated biphenyls
 D/F = Dioxins/furans
 VOCs = Volatile organic compounds
 Ammonia-N = Ammonia as nitrogen
 TEC = Toxic equivalent concentration
 GW = Groundwater
 TEE = Terrestrial ecological
 HH = Human health direct-contact
 mg/kg = Milligrams per kilogram
 ug/kg = Micrograms per kilogram
 ng/kg = Nanograms per kilogram
 mg/L = Milligrams per liter
 ug/L = Micrograms per liter
 pg/L = Picograms per liter
 SLs = Screening levels
 N/A = Not analyzed
 ND = Not detected

* = The number shown in parentheses indicates the number of locations where more than half of the non-detect COPC results had analytical reporting limits above SLs for this pathway.

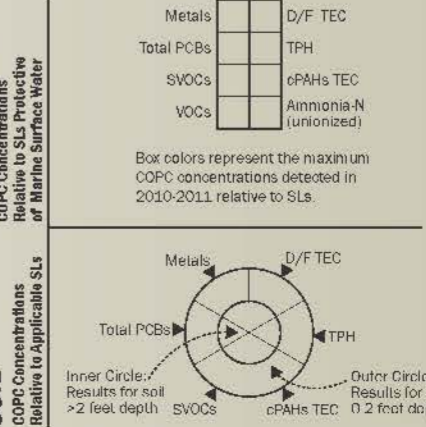
** = A limited number of VOCs were detected, but the detected VOCs are not considered COPCs for the Upland Study Area.

COPC	Shallow Soil (0-2 feet) Range of Detected Concentrations	No. of Shallow Soil Locations with Exceedances (by Pathway)	Deep Soil (>2 feet) Range of Detected Concentrations	No. of Deep Soil Locations with Exceedances (by Pathway)	Groundwater Range of Detected Concentrations	No. of Groundwater Locations with Exceedances	Surface Water Range of Detected Concentrations	No. of Surface Water Locations with Exceedances
TPH	N/A	N/A	N/A	N/A	ND	0 of 2	ND	0 of 2
cPAHs TEC	548.5 to 548.5 ug/kg	Soil to GW = 1 of 1 TEE = 0 of 1 HH = 1 of 1	N/A	N/A	ND	0 of 2	ND	0 of 2
SVOCs	ND	Soil to GW = 0 of 1 TEE = 0 of 1 HH = 0 of 1	N/A	N/A	ND	0 of 2	ND	0 of 2
Total PCBs	N/A	N/A	N/A	N/A	ND	0 of 2	ND	0 of 2
Metals	0.04 to 649 mg/kg	Soil to GW = 4 of 6 TEE = 4 of 6 HH = 0 of 6	0.03 to 621 mg/kg	Soil to GW = 1 of 1 TEE = 1 of 1 HH = 0 of 1	2.31E-05 to 0.475 mg/L	2 of 3	0.0007 to 0.0054 mg/L	0 of 2
D/F TEC	0.984 to 13.73 ng/kg	Soil to GW = 2 of 6 TEE = 2 of 6 HH = 2 of 6	ND	Soil to GW = 0 of 1 TEE = 0 of 1 HH = 0 of 1	2.3 to 13.5 pg/L	2 of 3	1.07 to 1.23 pg/L	2 of 2
VOCs	N/A	N/A	N/A	N/A	ND**	0 of 2	N/A	N/A
Ammonia-N (un-ionized)	N/A	N/A	N/A	N/A	2.11E-05 to 0.000135 mg/L	0 of 2	1.34E-05 to 1.72E-05 mg/L	0 of 2

Monitoring well

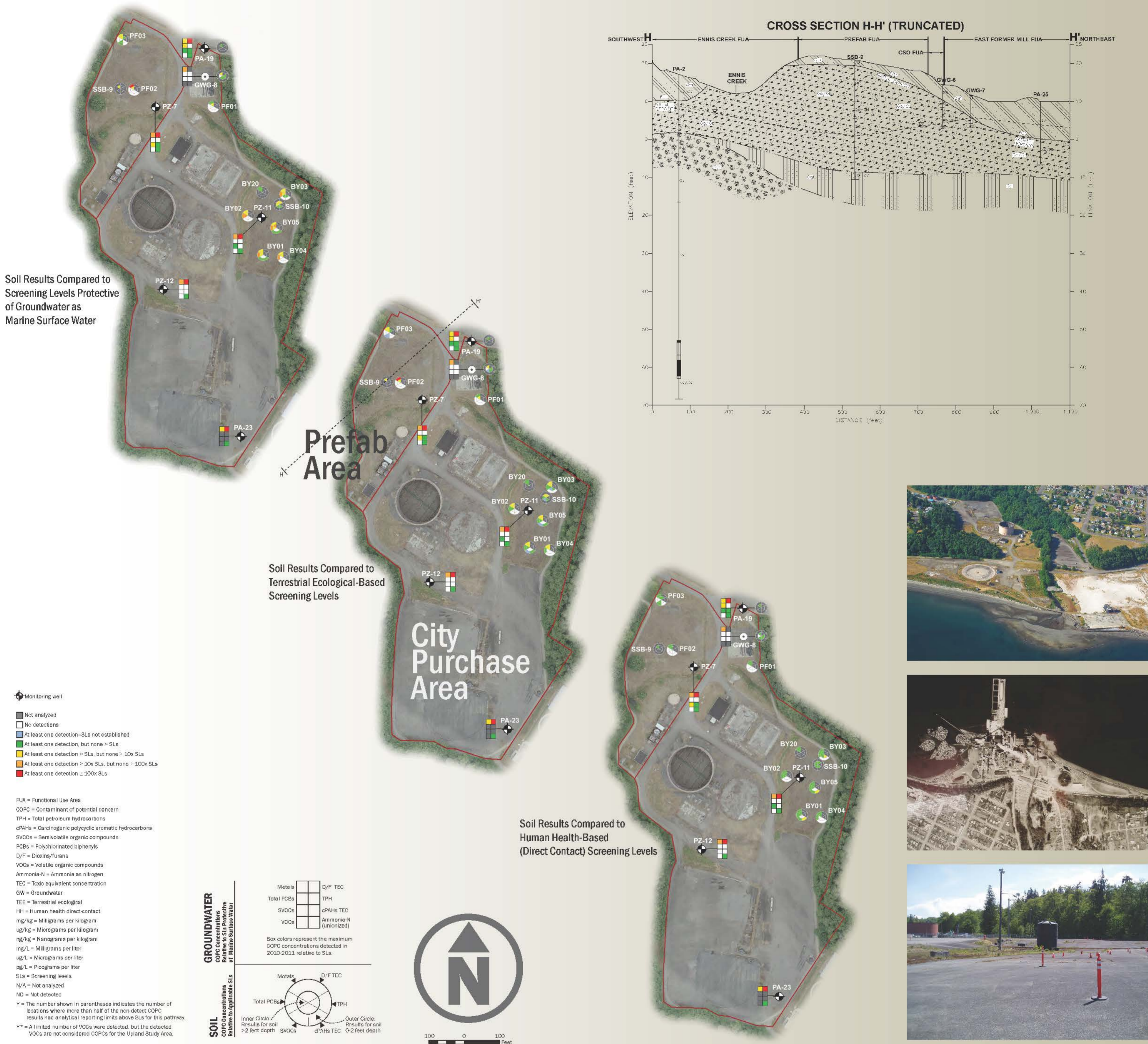
- Not analyzed
- No detections
- At least one detection - SLs not established
- At least one detection, but none > SLs
- At least one detection > SLs, but none > 10x SLs
- At least one detection ≥ 10x SLs, but none ≥ 100x SLs
- At least one detection ≥ 100x SLs

GROUNDWATER COPC Concentrations Relative to Applicable SLs



150 0 150 Feet

City Purchase/Prefab Areas



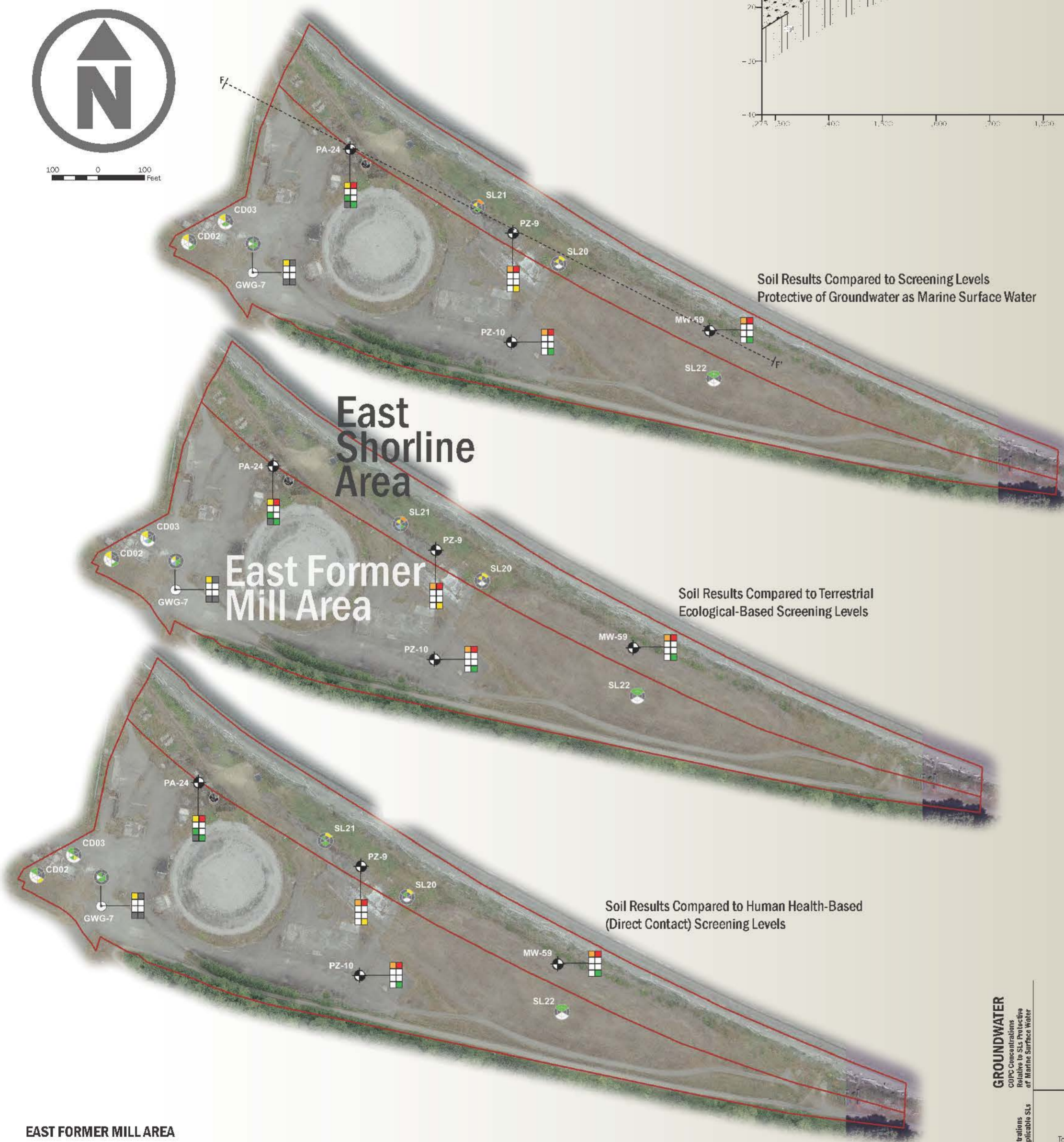
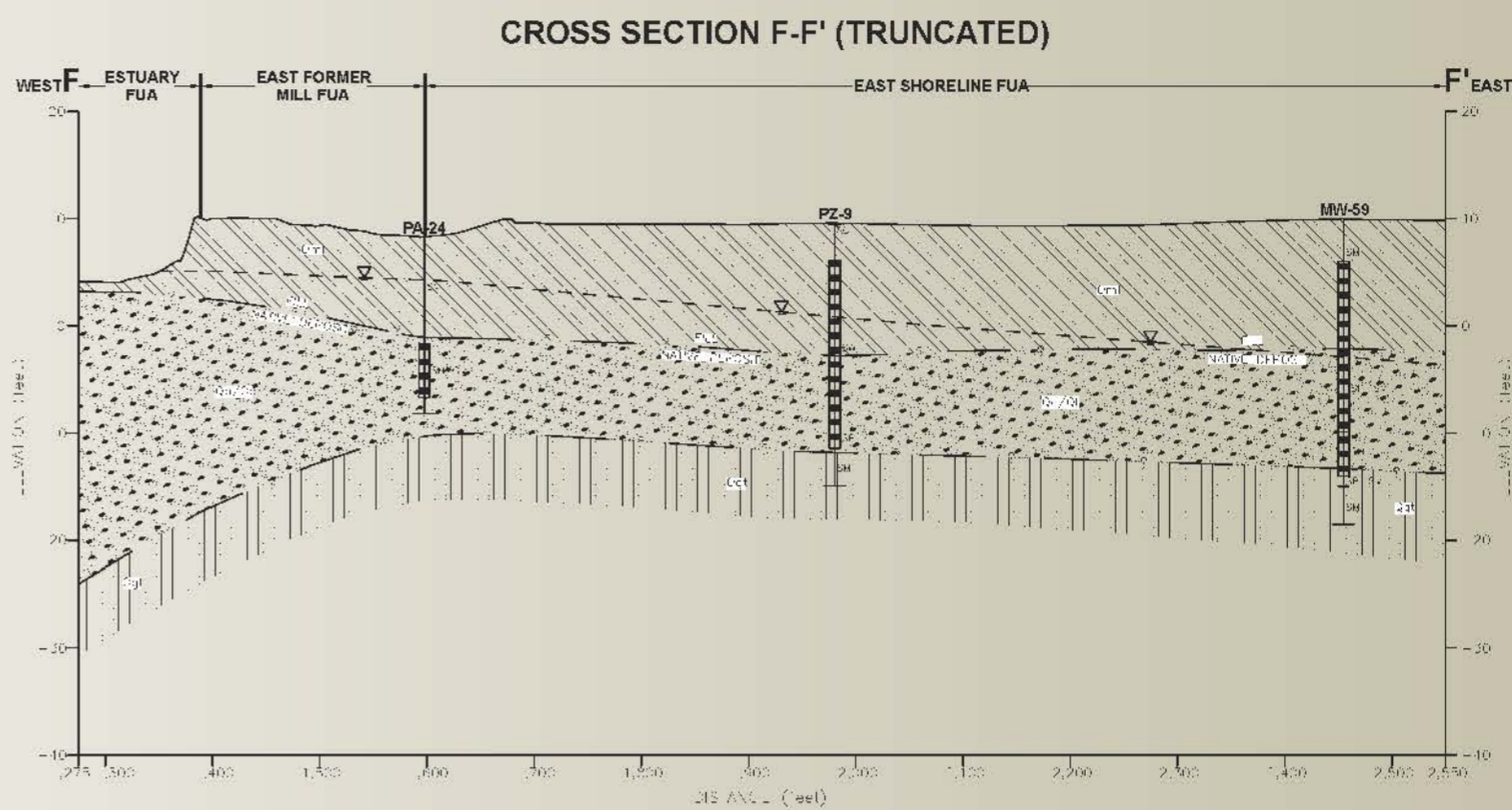
CITY PURCHASE AREA

COPC	Shallow Soil (0-2 feet) Range of Detected Concentrations	No. of Shallow Soil Locations with Exceedances (by Pathway)	Deep Soil (>2 feet) Range of Detected Concentrations	No. of Deep Soil Locations with Exceedances (by Pathway)	Groundwater Range of Detected Concentrations	No. of Groundwater Locations with Exceedances
TPH	N/A	N/A	16 to 16 mg/kg	Soil to GW = 0 of 1 TEE = 0 of 1 HH = 0 of 1	ND	0 of 4
cPAHs TEC	164.29 to 265.55 ug/kg	Soil to GW = 0 of 6 TEE = 0 of 6 HH = 2 of 6 (4)*	3.342 to 195.5 ug/kg	Soil to GW = 0 of 8 TEE = 0 of 8 HH = 1 of 8 (5)*	0.00714 to 0.00714 ug/L	0 of 4
SVOCs	67 to 180 ug/kg	Soil to GW = 0 of 6 TEE = 0 of 6 HH = 0 of 6	9.4 to 310 ug/kg	Soil to GW = 0 of 8 TEE = 0 of 8 HH = 0 of 8	0.012 to 0.71 ug/L	0 of 4
Total PCBs	0.054 to 0.19 mg/kg	Soil to GW = 5 of 6 (1)* TEE = 0 of 6 HH = 0 of 6	0.0089 to 0.077 mg/kg	Soil to GW = 5 of 8 (2)* TEE = 0 of 8 HH = 0 of 8	0.017 to 0.017 ug/L	1 of 4
Metals	0.07 to 1590 mg/kg	Soil to GW = 5 of 7 TEE = 5 of 7 HH = 1 of 7	0.015 to 5790 mg/kg	Soil to GW = 8 of 10 TEE = 8 of 10 HH = 0 of 10	0.000179 to 6.42 mg/L	5 of 5
D/F TEC	N/A	N/A	0.229 to 19.2 ng/kg	Soil to GW = 1 of 1 TEE = 1 of 1 HH = 1 of 1	1.44 to 23.2 pg/L	4 of 4
VOCs	ND	Soil to GW = 0 of 6 TEE = 0 of 6 HH = 0 of 6	ND**	Soil to GW = 0 of 6 TEE = 0 of 6 HH = 0 of 6	ND	0 of 3
Ammonia-N (un-ionized)	N/A	N/A	N/A	N/A	1.28E-05 to 0.000492 mg/L	0 of 4

PREFAB AREA

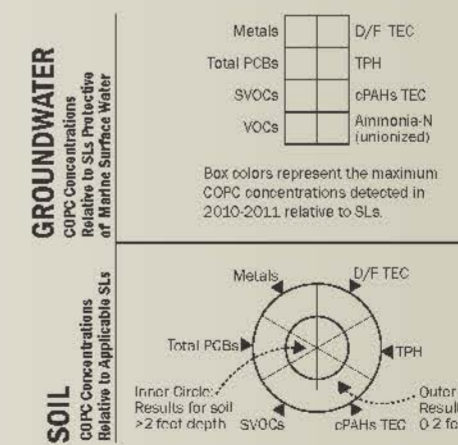
COPC	Shallow Soil (0-2 feet) Range of Detected Concentrations	No. of Shallow Soil Locations with Exceedances (by Pathway)	Deep Soil (>2 feet) Range of Detected Concentrations	No. of Deep Soil Locations with Exceedances (by Pathway)	Groundwater Range of Detected Concentrations	No. of Groundwater Locations with Exceedances
TPH	N/A	N/A	N/A	N/A	ND	0 of 1
cPAHs TEC	ND	Soil to GW = 0 of 2 TEE = 0 of 2 HH = 0 of 2 (2)*	0.00771 to 0.00771 ug/L	Soil to GW = 0 of 2 TEE = 0 of 2 HH = 0 of 2 (2)*	0.00771 to 0.00771 ug/L	0 of 1
SVOCs	50 to 70 ug/kg	Soil to GW = 0 of 2 (1)* TEE = 0 of 2 HH = 0 of 2	46 to 46 ug/kg	Soil to GW = 0 of 2 TEE = 0 of 2 HH = 0 of 2	0.011 to 4.2 ug/L	1 of 1
Total PCBs	ND	Soil to GW = 0 of 2 (2)* TEE = 0 of 2 HH = 0 of 2	ND	Soil to GW = 0 of 2 (2)* TEE = 0 of 2 HH = 0 of 2	ND	0 of 1
Metals	0.28 to 9370 mg/kg	Soil to GW = 2 of 2 TEE = 2 of 2 HH = 1 of 2	0.05 to 634 mg/kg	Soil to GW = 3 of 3 TEE = 3 of 3 HH = 0 of 3	0.000216 to 3.6 mg/L	1 of 1
D/F TEC	N/A	N/A	1.301 to 1.301 ng/kg	Soil to GW = 0 of 1 TEE = 0 of 1 HH = 0 of 1	8.87 to 8.87 pg/L	1 of 1
VOCs	ND	Soil to GW = 0 of 2 TEE = 0 of 2 HH = 0 of 2	ND	Soil to GW = 0 of 2 TEE = 0 of 2 HH = 0 of 2	ND	0 of 1
Ammonia-N (un-ionized)	N/A	N/A	N/A	N/A	2.1E-05 to 2.1E-05 mg/L	0 of 1

East Former Mill/East Shoreline Areas



- Monitoring well
- Not analyzed
- No detections
- At least one detection—SLs not established
- At least one detection, but none > SLs
- At least one detection > SLs, but none ≥ 10x SLs
- At least one detection ≥ 10x SLs, but none ≥ 100x SLs
- At least one detection > 100x SLs

- FUA = Functional Use Area
- COPC = Contaminant of potential concern
- TPH = Total petroleum hydrocarbons
- cPAHs = Carcinogenic polycyclic aromatic hydrocarbons
- SVOCs = Semivolatile organic compounds
- PCBs = Polychlorinated biphenyls
- D/F = Dioxins/furans
- VOCs = Volatile organic compounds
- Ammonia-N = Ammonia as nitrogen
- TEC = Toxic equivalent concentration
- GW = Groundwater
- TEE = Terrestrial ecological
- HH = Human health direct-contact
- ng/kg = Milligrams per kilogram
- ug/kg = Micrograms per kilogram
- ng/L = Nanograms per liter
- mg/L = Milligrams per liter
- ug/L = Micrograms per liter
- pg/L = Picograms per liter
- SLs = Screening levels
- N/A = Not analyzed
- ND = Not detected
- * = The number shown in parentheses indicates the number of locations where more than half of the non-detect COPC results had analytical reporting limits above SLs for this pathway.
- ** = A limited number of VOCs were detected, but the detected VOCs are not considered COPCs for the Upland Study Area.



EAST FORMER MILL AREA

COPC	Shallow Soil (0-2 feet) Range of Detected Concentrations	No. of Shallow Soil Locations with Exceedances (by Pathway)	Deep Soil (>2 feet) Range of Detected Concentrations	No. of Deep Soil Locations with Exceedances (by Pathway)	Groundwater Range of Detected Concentrations	No. of Groundwater Locations with Exceedances
TPH	N/A	N/A	20 to 20 mg/kg	Soil to GW = 0 of 1 TEE = 0 of 1 HH = 0 of 1	ND	0 of 3
cPAHs TEC	292.78 to 292.78 ug/kg	Soil to GW = 0 of 3 TEE = 0 of 3 HH = 1 of 3 (2)*	4.057 to 230.26 ug/kg	Soil to GW = 0 of 4 TEE = 0 of 4 HH = 1 of 4 (2)*	ND	0 of 3
SVOCs	ND	Soil to GW = 0 of 3 TEE = 0 of 3 HH = 0 of 3	20 to 590 ug/kg	Soil to GW = 0 of 4 TEE = 0 of 4 HH = 0 of 4	1.1 to 1.1 ug/L	0 of 3
Total PCBs	ND	Soil to GW = 0 of 2 (2)* TEE = 0 of 2 HH = 0 of 2	ND	Soil to GW = 0 of 3 (2)* TEE = 0 of 3 HH = 0 of 3	ND	0 of 3
Metals	0.027 to 512 mg/kg	Soil to GW = 2 of 3 TEE = 2 of 3 HH = 0 of 3	0.033 to 727 mg/kg	Soil to GW = 2 of 4 TEE = 3 of 4 HH = 0 of 4	0.0002 to 2 mg/L	3 of 3
D/F TEC	0.282 to 0.282 ng/kg	Soil to GW = 0 of 1 TEE = 0 of 1 HH = 0 of 1	0.654 to 0.654 ng/kg	Soil to GW = 0 of 1 TEE = 0 of 1 HH = 0 of 1	1.32 to 4.5 pg/L	2 of 2
VOCs	ND**	Soil to GW = 0 of 2 TEE = 0 of 2 HH = 0 of 2	ND**	Soil to GW = 0 of 2 TEE = 0 of 2 HH = 0 of 2	ND	0 of 1
Ammonia-N (un-ionized)	N/A	N/A	N/A	N/A	7.1955E-05 to 0.000478 mg/L	0 of 2

EAST SHORELINE AREA

COPC	Shallow Soil (0-2 feet) Range of Detected Concentrations	No. of Shallow Soil Locations with Exceedances (by Pathway)	Deep Soil (>2 feet) Range of Detected Concentrations	No. of Deep Soil Locations with Exceedances (by Pathway)	Groundwater Range of Detected Concentrations	No. of Groundwater Locations with Exceedances
TPH	N/A	N/A	N/A	Soil to GW = 0 of 2 TEE = 0 of 2 HH = 0 of 2 (1)**	ND	0 of 2
cPAHs TEC	N/A	N/A	122.7 to 122.7 ug/kg	Soil to GW = 0 of 2 TEE = 0 of 2 HH = 0 of 2	ND	0 of 2
SVOCs	N/A	N/A	230 to 230 ug/kg	Soil to GW = 0 of 2 TEE = 0 of 2 HH = 0 of 2	ND	0 of 2
Total PCBs	N/A	N/A	N/A	Soil to GW = 2 of 2 TEE = 2 of 2 HH = 0 of 2	ND	0 of 2
Metals	N/A	N/A	0.02 to 1040 mg/kg	Soil to GW = 2 of 2 TEE = 2 of 2 HH = 0 of 2	2.02E-05 to 4.89 mg/L	2 of 2
D/F TEC	32.987 to 73.222 ng/kg	Soil to GW = 2 of 2 TEE = 2 of 2 HH = 2 of 2	N/A	N/A	1.74 to 2.24 pg/L	2 of 2
VOCs	N/A	N/A	N/A	N/A	ND**	0 of 2
Ammonia-N (un-ionized)	N/A	N/A	N/A	N/A	0.00972 to 0.102 mg/L	1 of 2