

**PHOTO LOG**



**Start Point of Grid L-25**



**Middle View of Grid L-25**



**Middle View of Grid L-25**

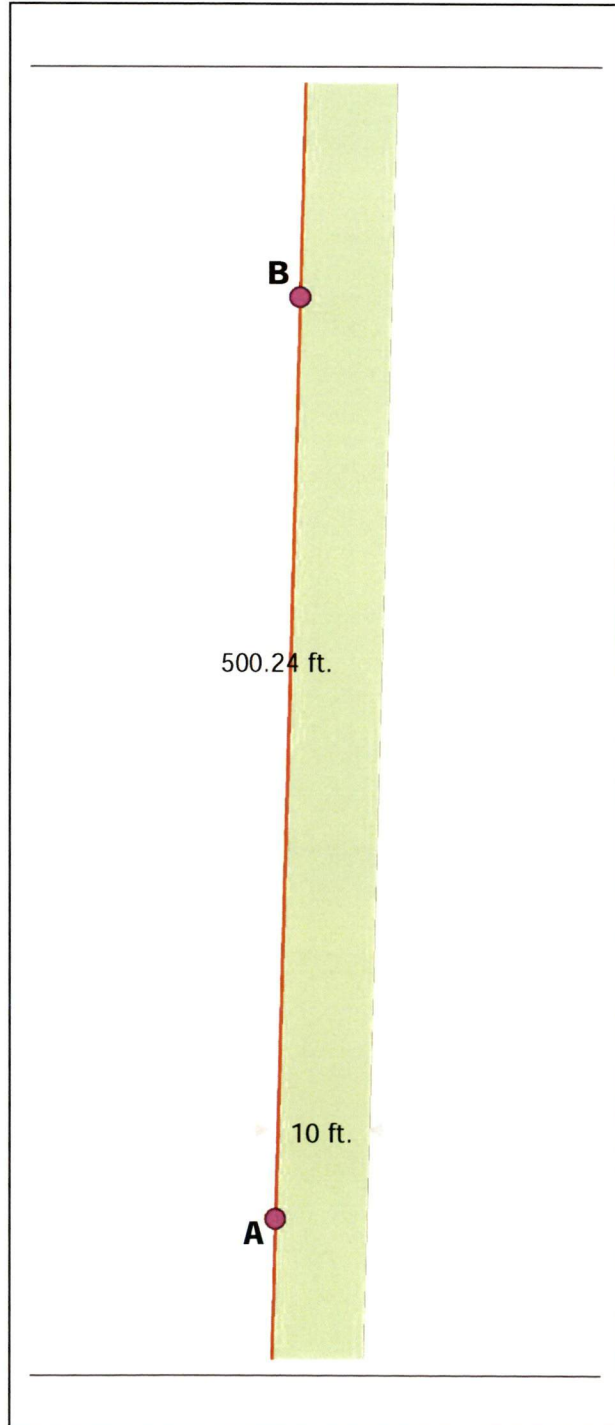
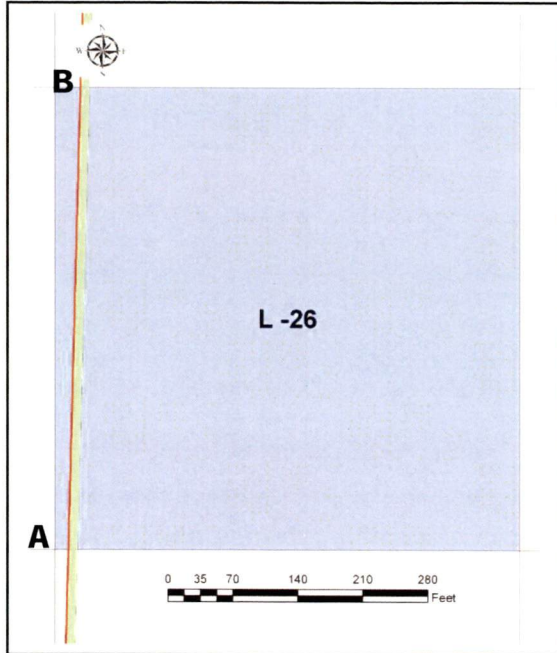


**End Point of Grid L-25**



**GRID DATA FIELD LOG – L-26**

<b>Project:</b>	Camp Bonneville Conservation & Restoration Project, Vancouver, WA		
<b>Prime Contract No:</b>	W8128F-06-2-0160	<b>MKM Project No:</b>	05-35-0032
<b>Task:</b>	8161 – Perimeter/CITA Fence	<b>Grid No.</b>	L-26
<b>Date Completed:</b>	01/10/07	<b>Surveyed Area:</b>	5,002.4 sq. ft.
<b>Team Number:</b>	4	<b>UXO Supervisor:</b>	Lloyd George



GPS Coordinates		
	Northing	Easting
<b>A</b>	545620	5061492
<b>B</b>	545619	5061644
<b>C</b>		
<b>D</b>		
<b>E</b>		

Legend	
	Perimeter/CITA Fence
	10ft Clearance Area
	Selected Grid
	Intersection Point between Grid Boundary and Perimeter/CITA Fence
10 -	Item Number – Location. Please refer to Page 2 for details

Coordinate System: UTM NAD 83 Zone 10 N



PHOTO LOG



Start Point of Grid L-26



Middle View of Grid L-26



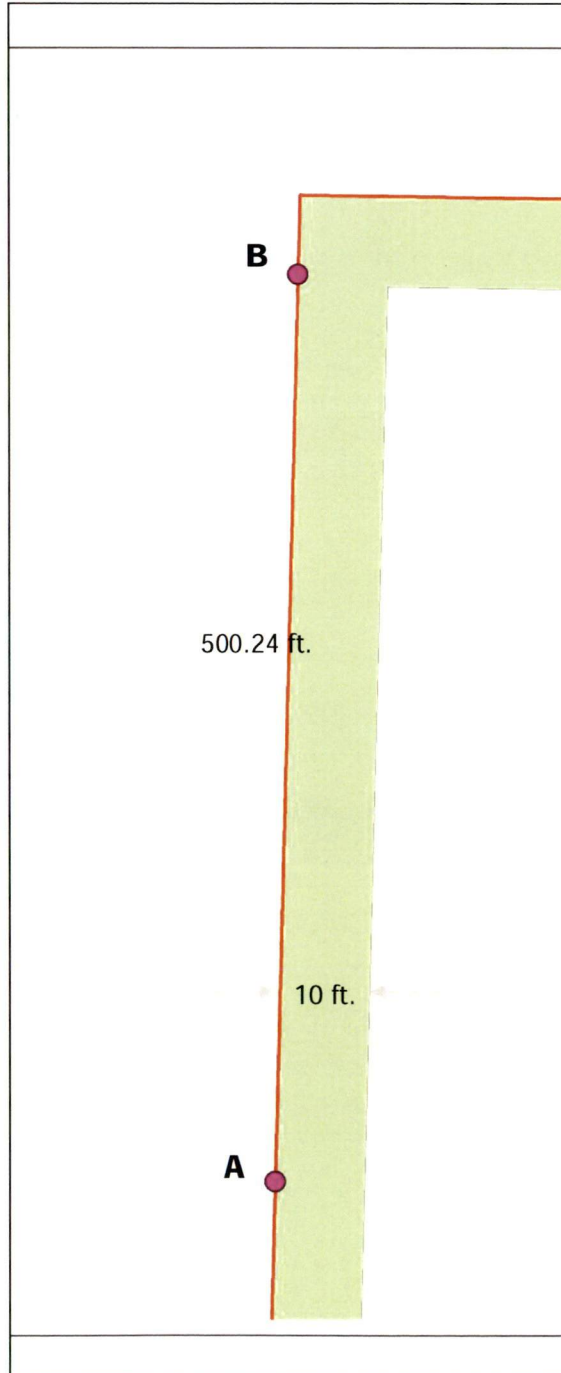
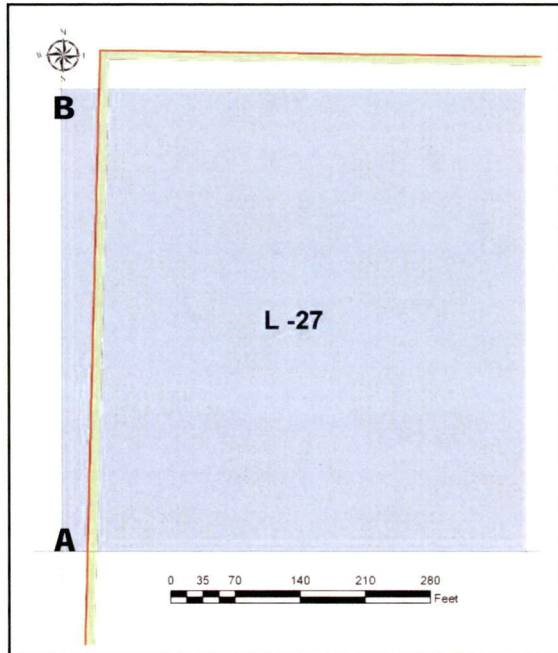
Middle View of Grid L-26



End Point of Grid L-26

### GRID DATA FIELD LOG – L-27

<b>Project:</b>	Camp Bonneville Conservation & Restoration Project, Vancouver, WA		
<b>Prime Contract No:</b>	W8128F-06-2-0160	<b>MKM Project No:</b>	05-35-0032
<b>Task:</b>	8161 – Perimeter/CITA Fence	<b>Grid No.</b>	L-27
<b>Date Completed:</b>	01/10/07	<b>Surveyed Area:</b>	5,002.4 sq. ft.
<b>Team Number:</b>	4	<b>UXO Supervisor:</b>	Lloyd George



GPS Coordinates		
	Northing	Easting
<b>A</b>	545619	5061644
<b>B</b>	545618	5061796
<b>C</b>		
<b>D</b>		
<b>E</b>		

Legend	
	Perimeter/CITA Fence
	10ft Clearance Area
	Selected Grid
	Intersection Point between Grid Boundary and Perimeter/CITA Fence
10 -	Item Number – Location. Please refer to Page 2 for details



### GRID DATA FIELD LOG – L27

<b>Project:</b>	Camp Bonneville Conservation & Restoration Project, Vancouver, WA		
<b>Prime Contract No:</b>	W8128F-06-2-0160	<b>MKM Project No:</b>	05-35-0032
<b>Task:</b>	8161 – Perimeter/CITA Fence	<b>Grid No.</b>	L-27
<b>Date Completed:</b>	01/10/07	<b>Surveyed Area:</b>	5,002.4 sq. ft.
<b>Team Number:</b>	4	<b>UXO Supervisor:</b>	Lloyd George

Item #	Item Description	Photo #	N Coordinate	E Coordinate	Move/BIP	Disposition
None Found						

Comments
None

Summary	
Total Number of Fuzed items	0
Number of Unfuzed items	0
Munitions Debris	0
Other Scrap	0

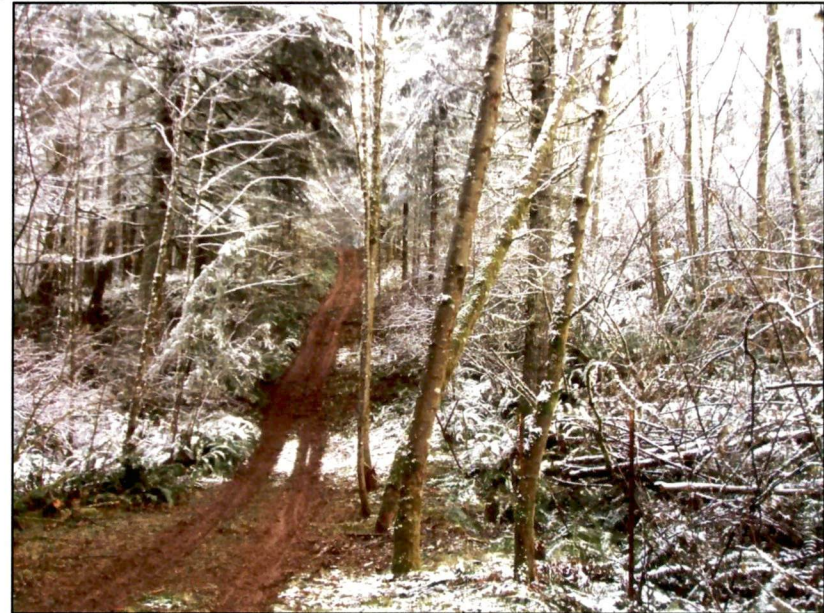
Photo Log	
Photo ID	Photo Description
	See Page 3

Surface Clearance accomplished by: Lloyd W. George

PHOTO LOG



**Start Point of Grid L-27**



**Middle View of Grid L-27**



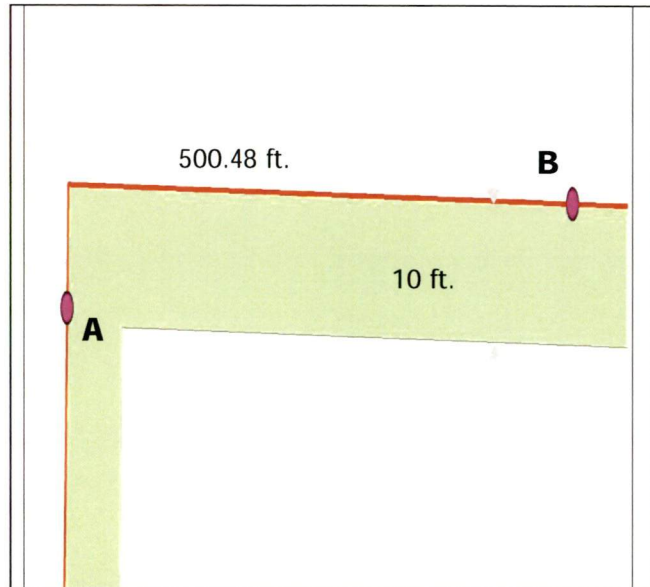
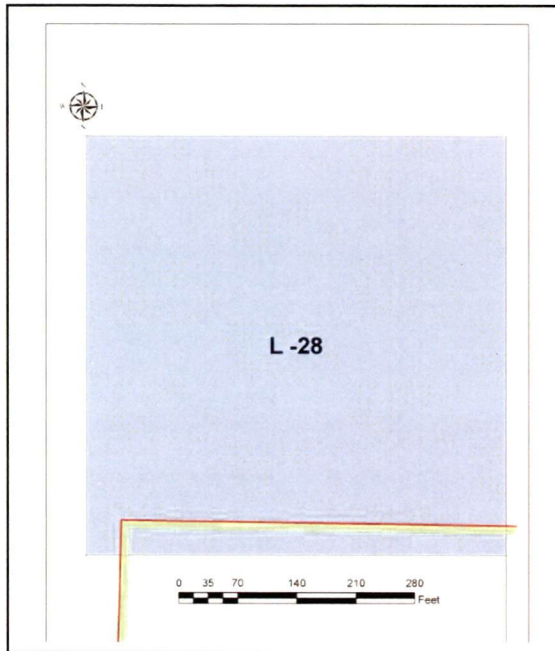
**Middle View of Grid L-27**



**End Point of Grid L-27**

### GRID DATA FIELD LOG – L-28

<b>Project:</b>	Camp Bonneville Conservation & Restoration Project, Vancouver, WA		
<b>Prime Contract No:</b>	W8128F-06-2-0160	<b>MKM Project No:</b>	05-35-0032
<b>Task:</b>	8161 - Perimeter/CITA Fence	<b>Grid No.</b>	L-28
<b>Date Completed:</b>	01/11/07	<b>Surveyed Area:</b>	5,004.8 sq. ft.
<b>Team Number:</b>	4	<b>UXO Supervisor:</b>	Lloyd George



GPS Coordinates		
	Northing	Easting
<b>A</b>	545618	5061796
<b>B</b>	545758	5061812
<b>C</b>		
<b>D</b>		
<b>E</b>		

Legend	
	Perimeter/CITA Fence
	10ft Clearance Area
	Selected Grid
	Intersection Point between Grid Boundary and Perimeter/CITA Fence
10 -	Item Number – Location. Please refer to Page 2 for details

Coordinate System: UTM NAD 83 Zone 10 N





**PHOTO LOG**



**Start Point in Grid L-28**



**Middle View in Grid L-28**



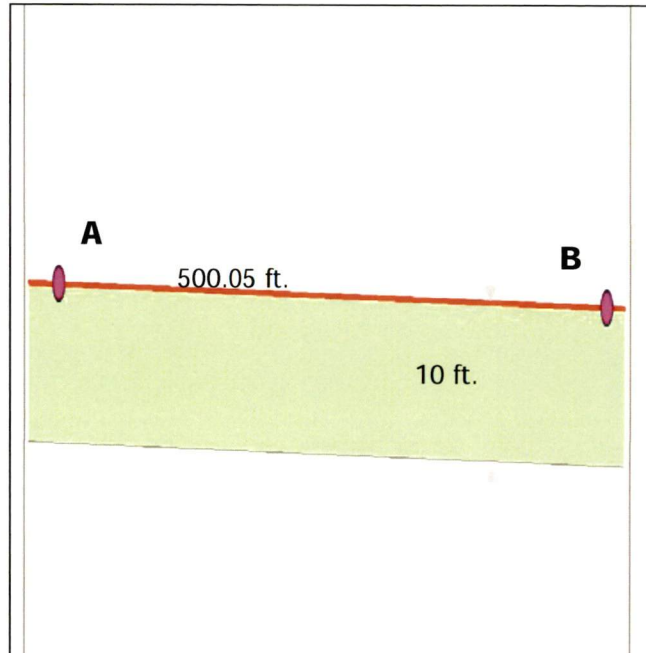
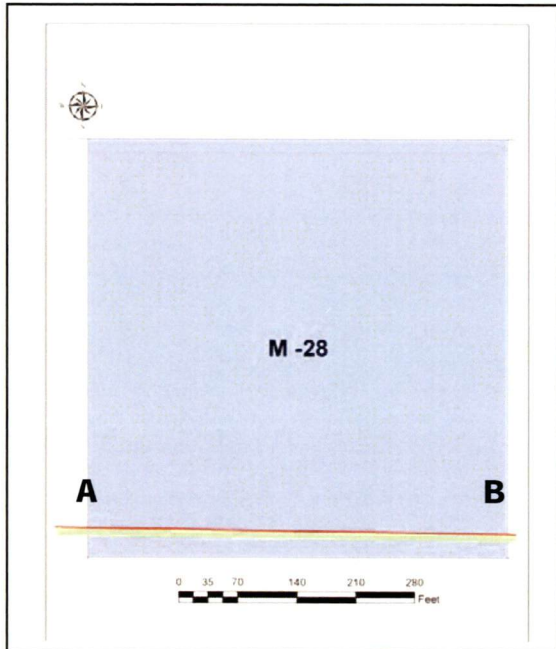
**Middle View of Grid L-28**



**End Point of Grid L-28**

### GRID DATA LOG FIELD- M-28

<b>Project:</b>	Camp Bonneville Conservation & Restoration Project, Vancouver, WA		
<b>Prime Contract No:</b>	W8128F-06-2-0160	<b>MKM Project No:</b>	05-35-0032
<b>Task:</b>	8161 – Perimeter/CITA Fence	<b>Grid No.</b>	M-28
<b>Date Completed:</b>	01/11/07	<b>Surveyed Area:</b>	5,000.5 sq. ft.
<b>Team Number:</b>	4	<b>UXO Supervisor:</b>	Lloyd George



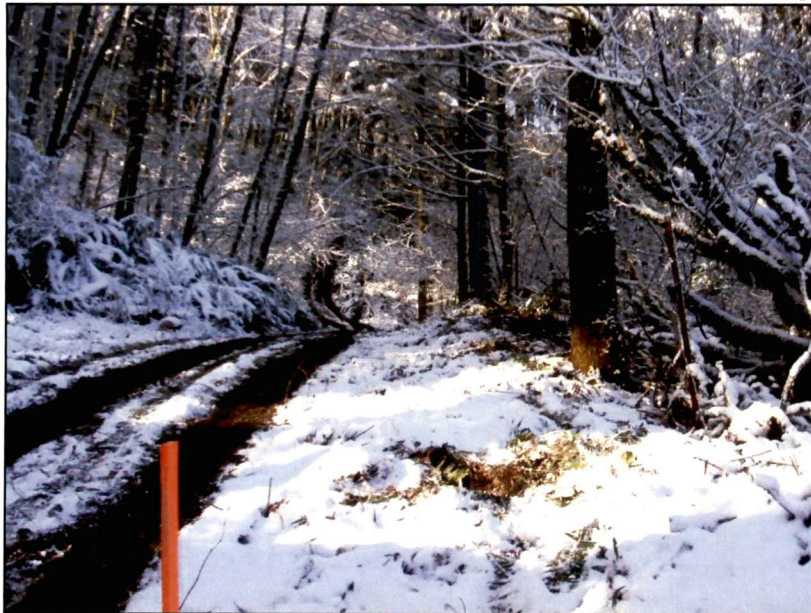
GPS Coordinates		
	Northing	Easting
<b>A</b>	545758	5061812
<b>B</b>	545910	5061815
<b>C</b>		
<b>D</b>		
<b>E</b>		

Legend	
	Perimeter/CITA
	10ft Clearance Area
	Selected Grid
	Intersection Point between Grid Boundary and Perimeter/CITA Fence
10 -	Item Number – Location. Please refer to Page 2 for details

Coordinate System: UTM NAD 83 Zone 10 N



**PHOTO LOG**



**Start Point in Grid M-28**



**Middle View in Grid M-28**



**Middle View of Grid M-28**

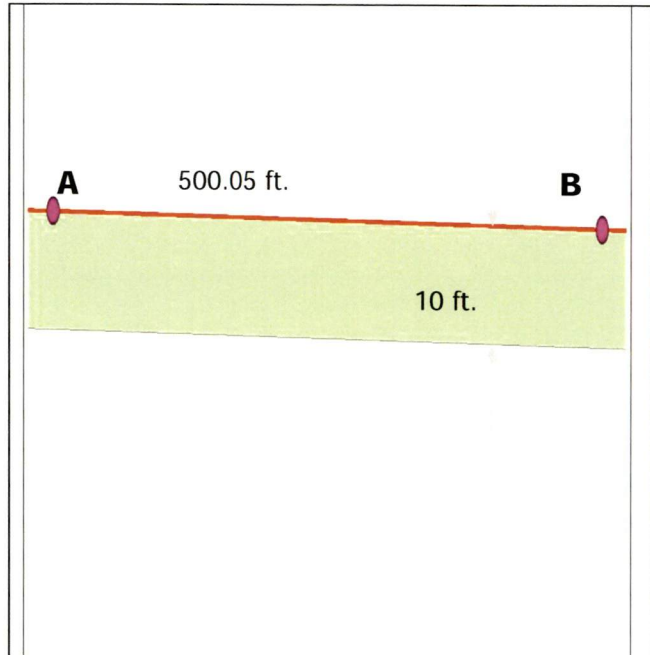
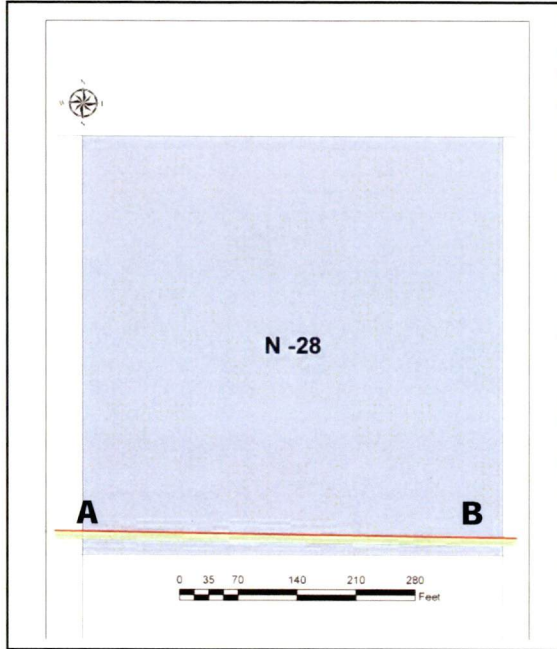


**End Point of Grid M-28**



### GRID DATA FIELD LOG – N-28

<b>Project:</b>	Camp Bonneville Conservation & Restoration Project, Vancouver, WA		
<b>Prime Contract No:</b>	W8128F-06-2-0160	<b>MKM Project No:</b>	05-35-0032
<b>Task:</b>	8161 - Perimeter/CITA Fence	<b>Grid No.</b>	N-28
<b>Date Completed:</b>	01/11/07	<b>Surveyed Area:</b>	5 000.5 sq. ft.
<b>Team Number:</b>	4	<b>UXO Supervisor:</b>	Lloyd George



GPS Coordinates		
	Northing	Easting
<b>A</b>	545910	5061815
<b>B</b>	546063	5061817
<b>C</b>		
<b>D</b>		
<b>E</b>		

Legend	
	Perimeter/CITA Fence
	10ft Clearance Area
	Selected Grid
	Intersection Point between Grid Boundary and Perimeter/CITA Fence
<b>10 - ☆</b>	Item Number – Location. Please refer to Page 2 for details

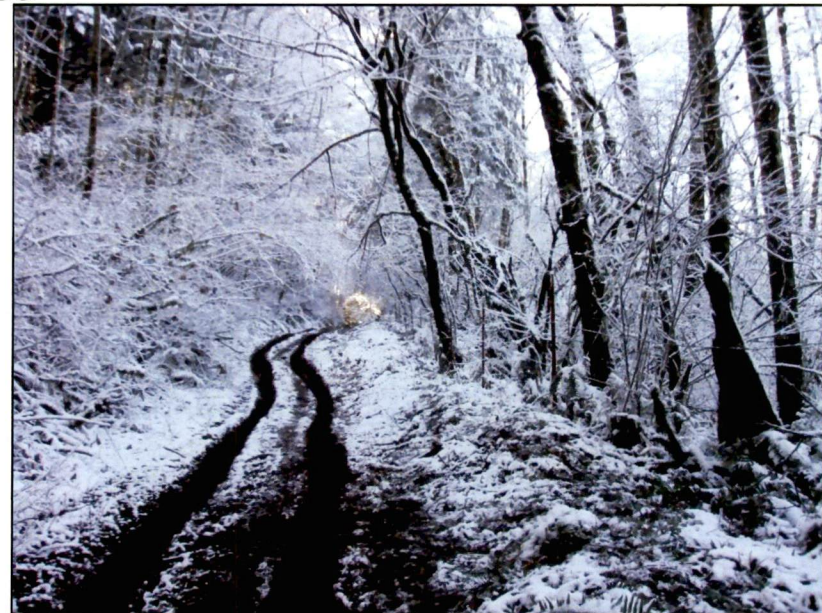
Coordinate System: UTM NAD 83 Zone 10 N



PHOTO LOG



**Start Point in Grid N-28**



**Middle View in Grid N-28**



**Middle View of Grid N-28**



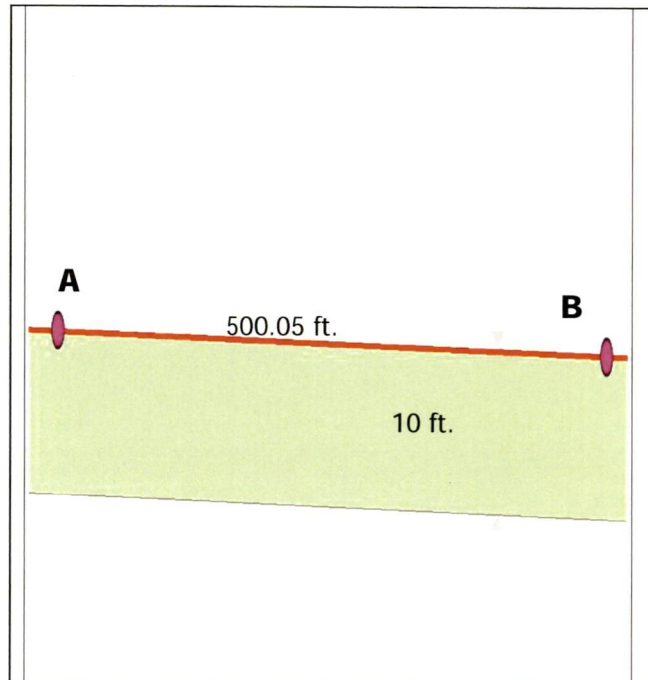
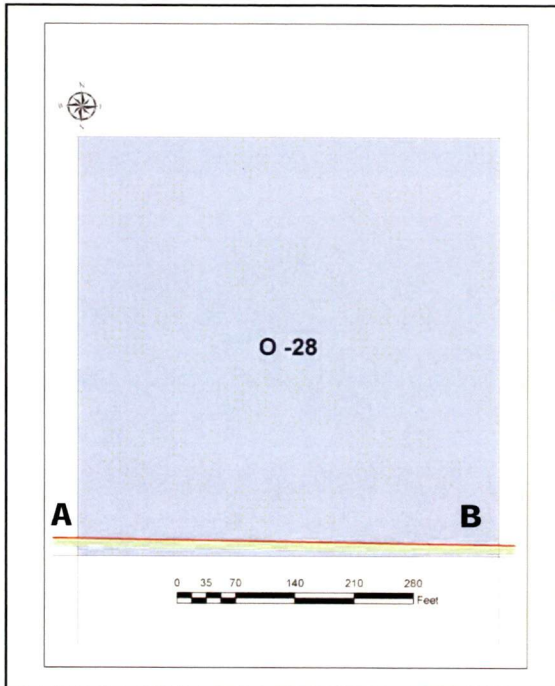
**End Point of Grid N-28**





**GRID DATA FIELD LOG – O-28**

<b>Project:</b>	Camp Bonneville Conservation & Restoration Project, Vancouver, WA		
<b>Prime Contract No:</b>	W8128F-06-2-0160	<b>MKM Project No:</b>	05-35-0032
<b>Task:</b>	8161 - Perimeter/CITA Fence	<b>Grid No.</b>	O-28
<b>Date Completed:</b>	01/11/07	<b>Surveyed Area:</b>	5,000.5 sq. ft.
<b>Team Number:</b>	4	<b>UXO Supervisor:</b>	Lloyd George



GPS Coordinates		
	Northing	Easting
<b>A</b>	546063	5061817
<b>B</b>	546215	5061820
<b>C</b>		
<b>D</b>		
<b>E</b>		

Legend	
	Perimeter/CITA Fence
	10ft Clearance Area
	Selected Grid
	Intersection Point between Grid Boundary and Perimeter/CITA Fence
<b>10 - ☆</b>	Item Number – Location. Please refer to Page 2 for details

Coordinate System: UTM NAD 83 Zone 10 N



PHOTO LOG



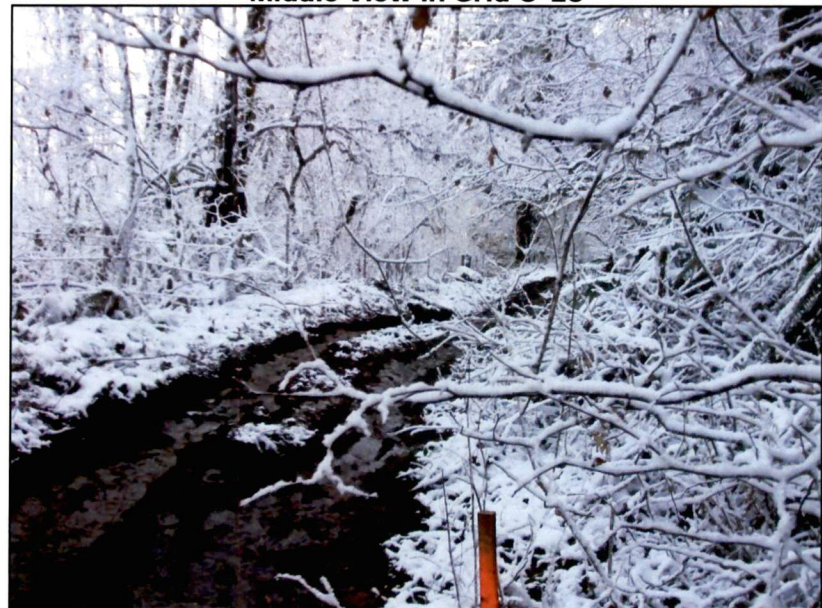
**Start Point in Grid O-28**



**Middle View in Grid O-28**



**Middle View of Grid O-28**

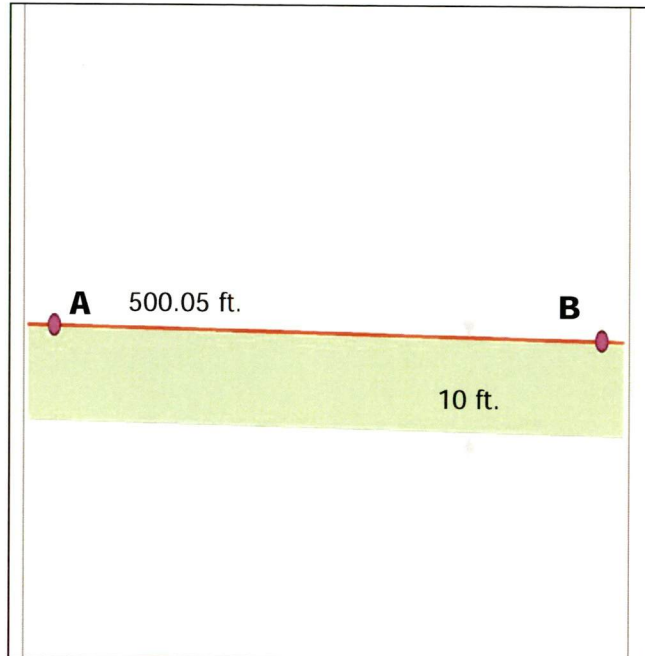
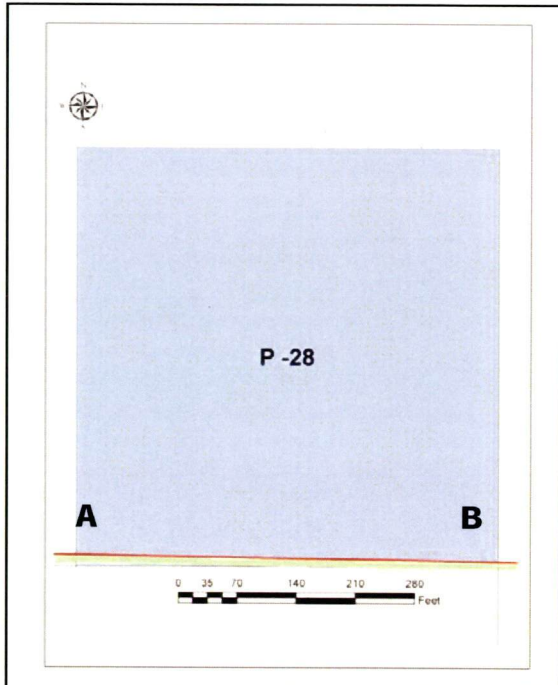


**End Point of Grid O-28**



**GRID DATA FIELD LOG – P-28**

<b>Project:</b>	Camp Bonneville Conservation & Restoration Project, Vancouver, WA		
<b>Prime Contract No:</b>	W8128F-06-2-0160	<b>MKM Project No:</b>	05-35-0032
<b>Task:</b>	8161 - Perimeter/CITA Fence	<b>Grid No.</b>	P-28
<b>Date Completed:</b>	01/11/07	<b>Surveyed Area:</b>	5,000.5 sq. ft.
<b>Team Number:</b>	4	<b>UXO Supervisor:</b>	Lloyd George



GPS Coordinates		
	Northing	Easting
<b>A</b>	546215	5061820
<b>B</b>	546367	5061823
<b>C</b>		
<b>D</b>		
<b>E</b>		

Legend	
	Perimeter/CITA Fence
	10ft Clearance Area
	Selected Grid
	Intersection Point between Grid Boundary and Perimeter/CITA Fence
<b>10 - ☆</b>	Item Number – Location. Please refer to Page 2 for details

Coordinate System: UTM NAD 83 Zone 10 N



GRID DATA FIELD LOG – P-28

<b>Project:</b>	Camp Bonneville Conservation & Restoration Project, Vancouver, WA		
<b>Prime Contract No:</b>	W8128F-06-2-0160	<b>MKM Project No:</b>	05-35-0032
<b>Task:</b>	8161 - Perimeter/CITA Fence	<b>Grid No.</b>	P-28
<b>Date Completed:</b>	01/11/07	<b>Surveyed Area:</b>	5,000.5 sq. ft.
<b>Team Number:</b>	4	<b>UXO Supervisor:</b>	Lloyd George

Item #	Item Description	Photo #	N Coordinate	E Coordinate	Move/BIP	Disposition
None Found						

Comments
None

Summary	
Total Number of Fuzed items	0
Number of Unfuzed items	0
Munitions Debris	0
Other Scrap	0

Photo Log	
Photo ID	Photo Description
	See page 3

Surface Clearance accomplished by: Lloyd W George

PHOTO LOG



**Start Point in Grid P-28**



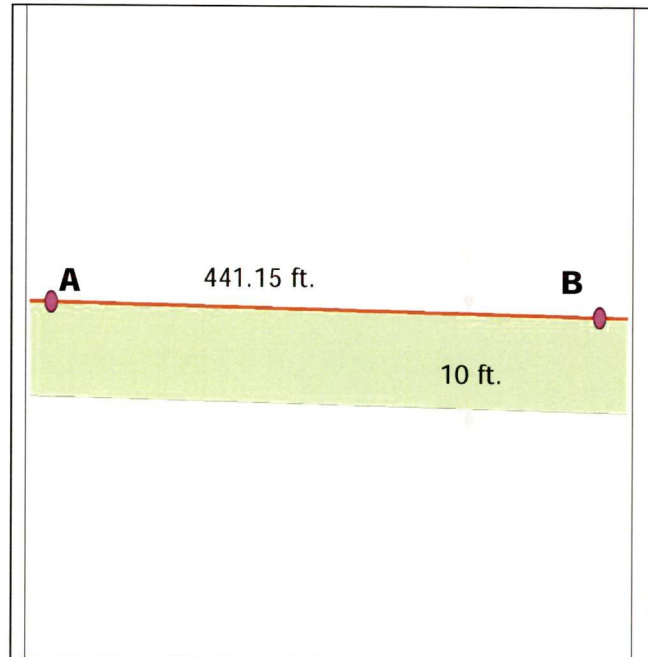
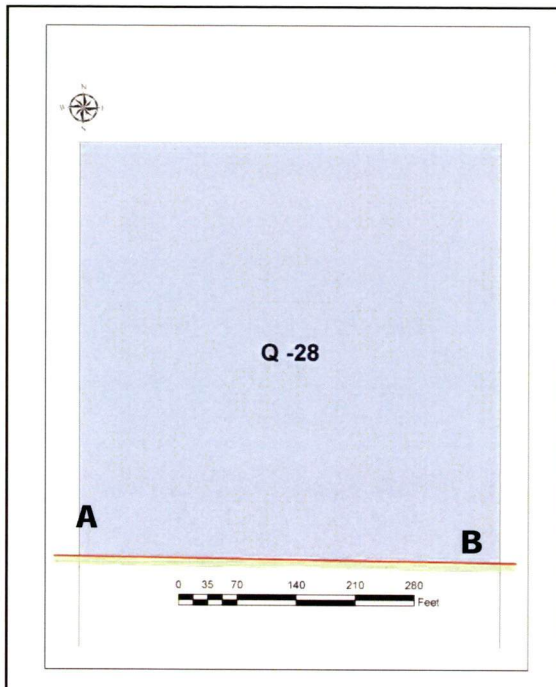
**Middle View in Grid P-28**



**Middle View of Grid P-28**

### GRID DATA FIELD LOG – Q-28

<b>Project:</b>	Camp Bonneville Conservation & Restoration Project, Vancouver, WA		
<b>Prime Contract No:</b>	W8128F-06-2-0160	<b>MKM Project No:</b>	05-35-0032
<b>Task:</b>	8161 - Perimeter/CITA Fence	<b>Grid No.</b>	Q-28
<b>Date Completed:</b>	01/11/07	<b>Surveyed Area:</b>	4,411.5 sq. ft.
<b>Team Number:</b>	4	<b>UXO Supervisor:</b>	Lloyd George



<b>GPS Coordinates</b>		
	Northing	Easting
<b>A</b>	546367	5061823
<b>B</b>	546520	5061825
<b>C</b>	546375	5061823
<b>D</b>	546382	5061823
<b>E</b>		

<b>Legend</b>	
	Perimeter/CITA Fence
	10ft Clearance Area
	Selected Grid
	Intersection Point between Grid Boundary and Perimeter/CITA Fence
10 -	Item Number – Location. Please refer to Page 2 for details

Coordinate System: UTM NAD 83 Zone 10 N





PHOTO LOG



Start Point in Grid Q-28



Middle View in Grid Q-28



Middle View of Grid Q-28

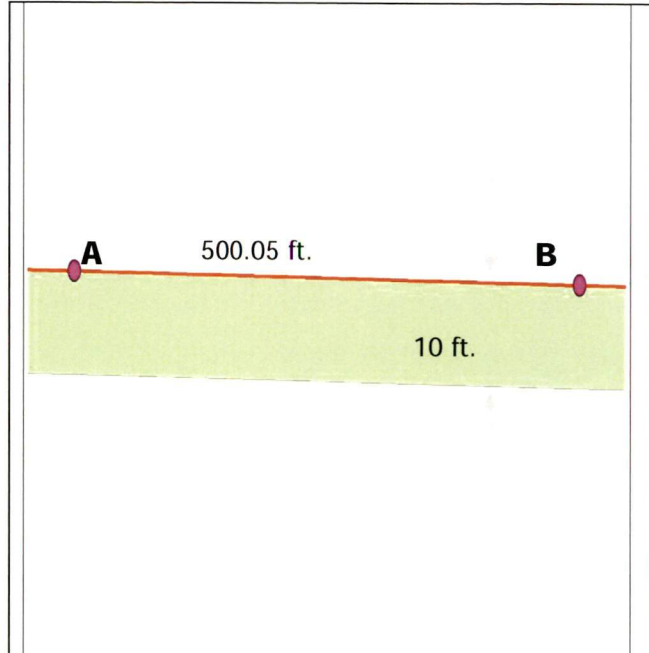
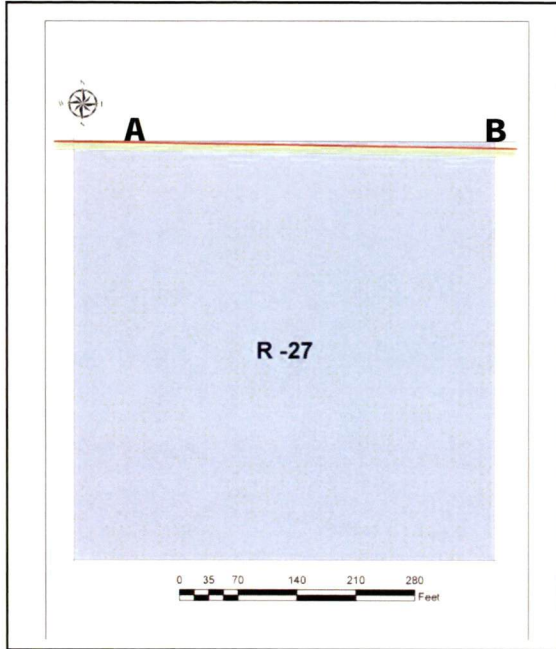


End Point of Grid Q-28



**GRID DATA FIELD LOG – R-27**

<b>Project:</b>	Camp Bonneville Conservation & Restoration Project, Vancouver, WA		
<b>Prime Contract No:</b>	W8128F-06-2-0160	<b>MKM Project No:</b>	05-35-0032
<b>Task:</b>	8161 - Perimeter/CITA Fence	<b>Grid No.</b>	R-27
<b>Date Completed:</b>	01/11/07	<b>Surveyed Area:</b>	5,000.5 sq. ft.
<b>Team Number:</b>	4	<b>UXO Supervisor:</b>	Lloyd George



GPS Coordinates		
	Northing	Easting
<b>A</b>	546520	5061825
<b>B</b>	546672	5061828
<b>C</b>		
<b>D</b>		
<b>E</b>		

Legend	
	Perimeter/CITA Fence
	10ft Clearance Area
	Selected Grid
	Intersection Point between Grid Boundary and Perimeter/CITA Fence
10 -	Item Number – Location. Please refer to Page 2 for details

Coordinate System: UTM NAD 83 Zone 10 N



GRID DATA FIELD LOG – R-27

<b>Project:</b>	Camp Bonneville Conservation & Restoration Project, Vancouver, WA		
<b>Prime Contract No:</b>	W8128F-06-2-0160	<b>MKM Project No:</b>	05-35-0032
<b>Task:</b>	8161 - Perimeter/CITA Fence	<b>Grid No.</b>	R-27
<b>Date Completed:</b>	01/11/07	<b>Surveyed Area:</b>	5,000.5 sq. ft.
<b>Team Number:</b>	4	<b>UXO Supervisor:</b>	Lloyd George

Item #	Item Description	Photo #	N Coordinate	E Coordinate	Move/BIP	Disposition
None Found						

Comments
None

Summary	
Total Number of Fuzed items	0
Number of Unfuzed items	0
Munitions Debris	0
Other Scrap	0

Photo Log	
Photo ID	Photo Description
	See page 3

Surface Clearance accomplished by: Lloyd W. George

PHOTO LOG



**Start Point in Grid R-27**



**Middle View in Grid R-27**



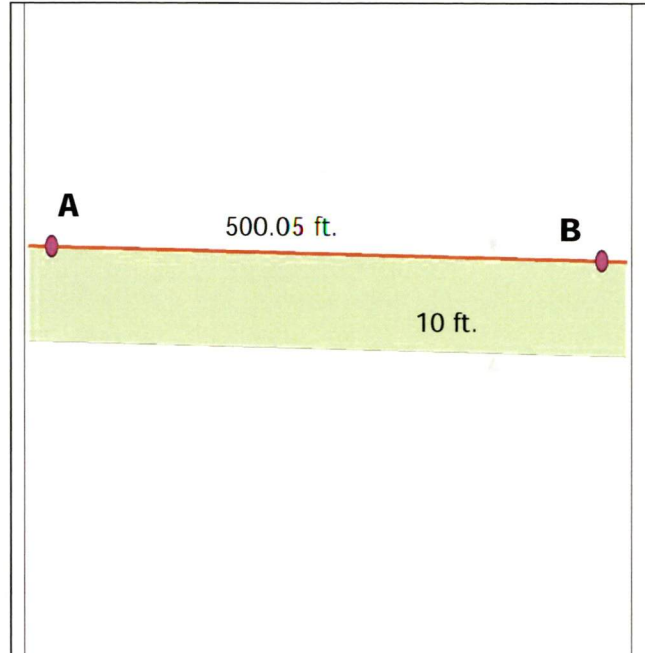
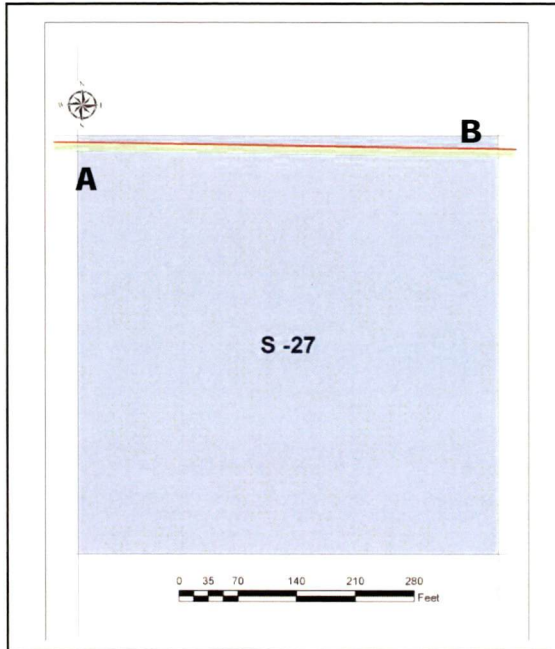
**Middle View of Grid R-27**



**End Point of Grid R-27**

### GRID DATA FIELD LOG – S-27

<b>Project:</b>	Camp Bonneville Conservation & Restoration Project, Vancouver, WA		
<b>Prime Contract No:</b>	W8128F-06-2-0160	<b>MKM Project No:</b>	05-35-0032
<b>Task:</b>	8161 - Perimeter/CITA Fence	<b>Grid No.</b>	S-27
<b>Date Completed:</b>	01/11/07	<b>Surveyed Area:</b>	5,000.5 sq. ft.
<b>Team Number:</b>	4	<b>UXO Supervisor:</b>	Lloyd George



GPS Coordinates		
	Northing	Easting
<b>A</b>	546672	5061828
<b>B</b>	546824	5061830
<b>C</b>		
<b>D</b>		
<b>E</b>		

Legend	
	Perimeter/CITA Fence
	10ft Clearance Area
	Selected Grid
	Intersection Point between Grid Boundary and Perimeter/CITA Fence
10 -	Item Number – Location. Please refer to Page 2 for details

Coordinate System: UTM NAD 83 Zone 10 N



GRID DATA FIELD LOG – S-27

<b>Project:</b>	Camp Bonneville Conservation & Restoration Project, Vancouver, WA		
<b>Prime Contract No:</b>	W8128F-06-2-0160	<b>MKM Project No:</b>	05-35-0032
<b>Task:</b>	8161 - Perimeter/CITA Fence	<b>Grid No.</b>	S-27
<b>Date Completed:</b>	01/11/07	<b>Surveyed Area:</b>	5,000.5 sq. ft.
<b>Team Number:</b>	4	<b>UXO Supervisor:</b>	Lloyd George

Item #	Item Description	Photo #	N Coordinate	E Coordinate	Move/BIP	Disposition
None Found						

Comments
None

Summary	
Total Number of Fuzed items	0
Number of Unfuzed items	0
Munitions Debris	0
Other Scrap	0

Photo Log	
Photo ID	Photo Description
	See page 3

Surface Clearance accomplished by: Lloyd W George

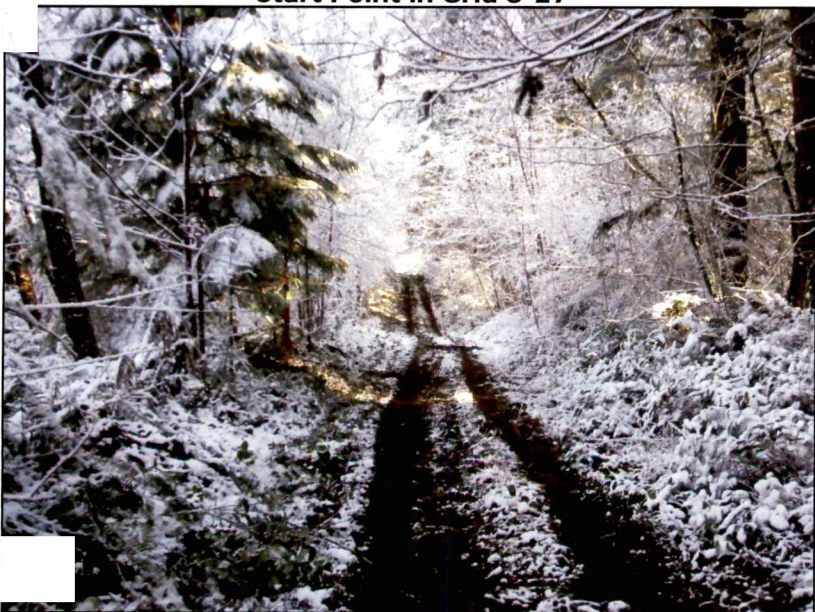
PHOTO LOG



**Start Point in Grid S-27**



**Middle View in Grid S-27**



**Middle View of Grid S-27**

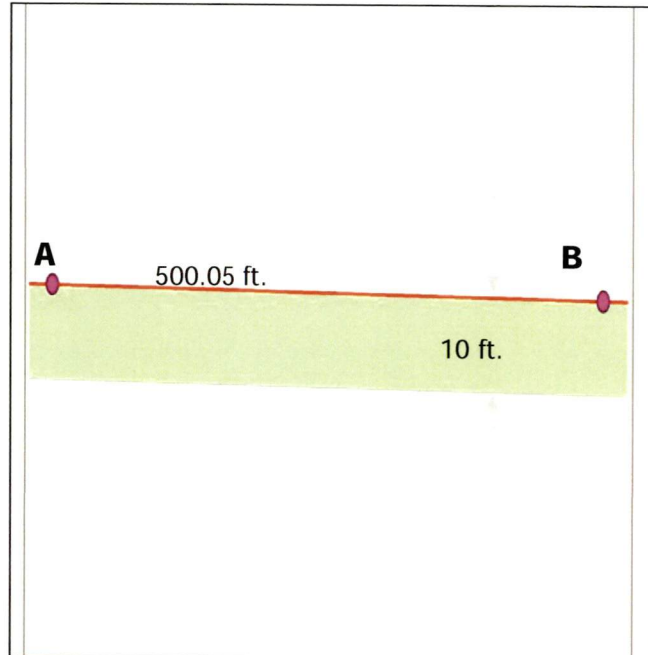
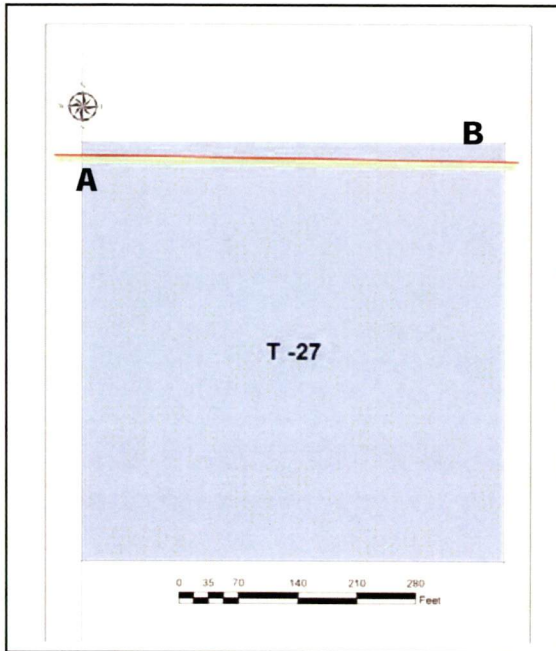


**End Point of Grid S-27**



**GRID DATA FIELD LOG – T-27**

<b>Project:</b>	Camp Bonneville Conservation & Restoration Project, Vancouver, WA		
<b>Prime Contract No.:</b>	W8128F-06-2-0160	<b>MKM Project No.:</b>	05-35-0032
<b>Task:</b>	8161 - Perimeter/CITA Fence	<b>Grid No.:</b>	T-27
<b>Date Completed:</b>	01/11/07	<b>Surveyed Area:</b>	5,000.5 sq. ft.
<b>Team Number:</b>	4	<b>UXO Supervisor:</b>	Lloyd George



GPS Coordinates		
	Northing	Easting
<b>A</b>	546824	5061830
<b>B</b>	546977	5061833
<b>C</b>		
<b>D</b>		
<b>E</b>		

Legend	
	Perimeter/CITA Fence
	10ft Clearance Area
	Selected Grid
	Intersection Point between Grid Boundary and Perimeter/CITA Fence
	Item Number – Location. Please refer to Page 2 for details

Coordinate System: UTM NAD 83 Zone 10 N





GRID DATA FIELD LOG – T-27

<b>Project:</b>	Camp Bonneville Conservation & Restoration Project, Vancouver, WA		
<b>Prime Contract No:</b>	W8128F-06-2-0160	<b>MKM Project No:</b>	05-35-0032
<b>Task:</b>	8161 - Perimeter/CITA Fence	<b>Grid No.</b>	T-27
<b>Date Completed:</b>	01/11/07	<b>Surveyed Area:</b>	5,000.5 sq. ft.
<b>Team Number:</b>	4	<b>UXO Supervisor:</b>	Lloyd George

Item #	Item Description	Photo #	N Coordinate	E Coordinate	Move/BIP	Disposition
None Found						

Comments
None

Summary	
Total Number of Fuzed items	0
Number of Unfuzed items	0
Munitions Debris	0
Other Scrap	0

Photo Log	
Photo ID	Photo Description
	See page 3

Surface Clearance accomplished by: Lloyd W. George

**PHOTO LOG**



**Start Point in Grid T-27**



**Middle View in Grid T-27**



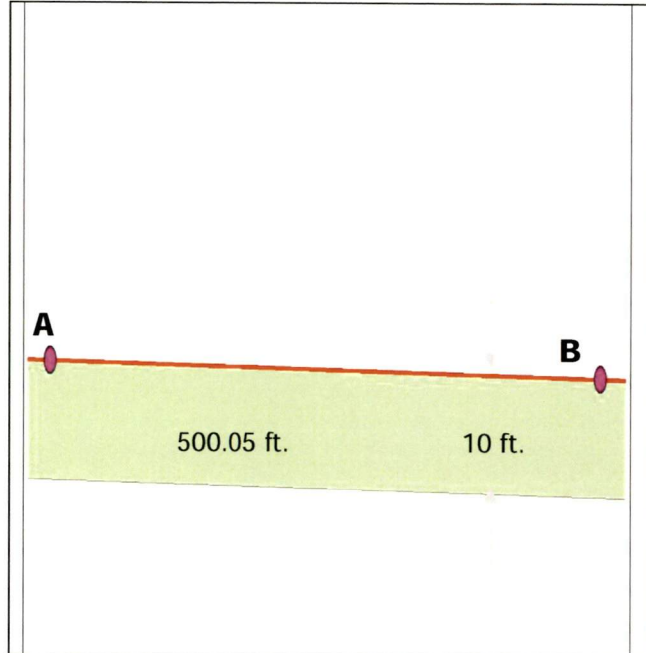
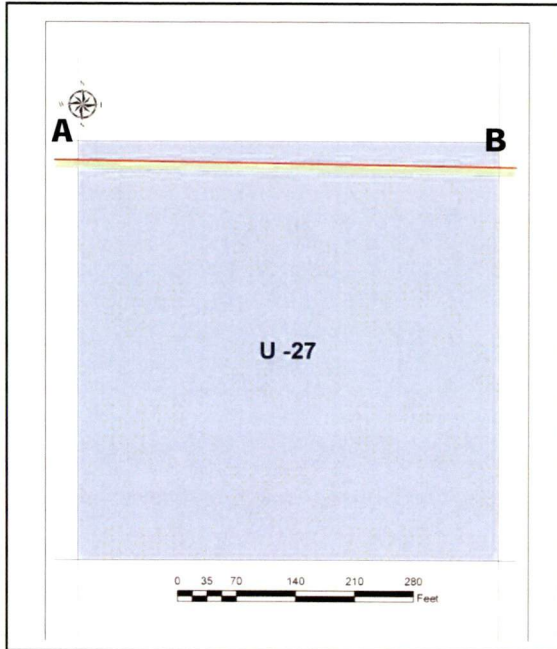
**Middle View of Grid T-27**



**End Point of Grid T-27**

### GRID DATA FIELD LOG – U-27

<b>Project:</b>	Camp Bonneville Conservation & Restoration Project, Vancouver, WA		
<b>Prime Contract No:</b>	W8128F-06-2-0160	<b>MKM Project No:</b>	05-35-0032
<b>Task:</b>	8161 – Perimeter/CITA Fence	<b>Grid No.</b>	U-27
<b>Date Completed:</b>	01/10/07	<b>Surveyed Area:</b>	5,000.5 sq. ft.
<b>Team Number:</b>	3	<b>UXO Supervisor:</b>	John Clifford



GPS Coordinates		
	Northing	Easting
<b>A</b>	546977	5061833
<b>B</b>	547129	5061835
<b>C</b>		
<b>D</b>		
<b>E</b>		

Legend	
	Perimeter/CITA Fence
	10ft Clearance Area
	Selected Grid
	Intersection Point between Grid Boundary and Perimeter/CITA Fence
10 -	Item Number – Location. Please refer to Page 2 for details

Coordinate System: UTM NAD 83 Zone 10 N



PHOTO LOG



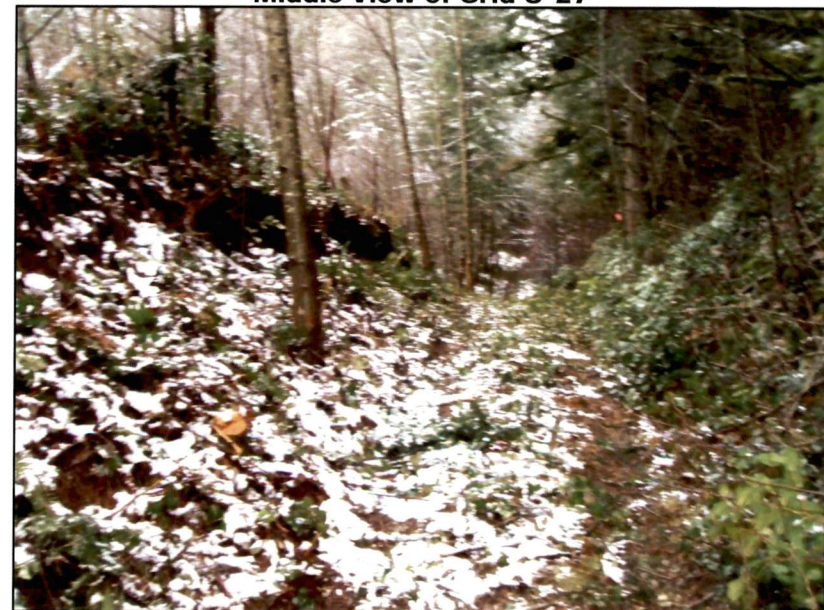
**Start Point of Grid U-27**



**Middle View of Grid U-27**



**Middle View of Grid U-27**

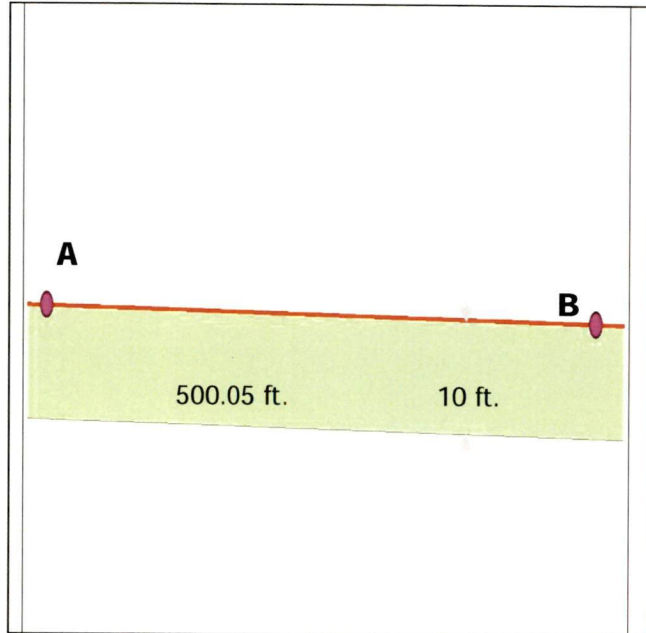
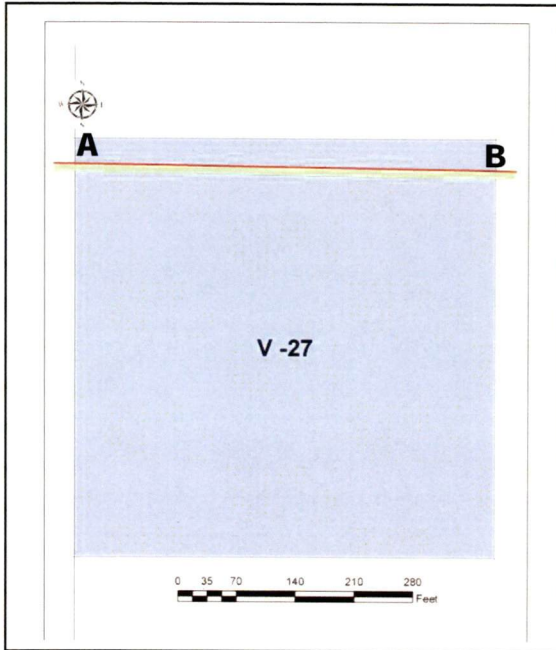


**End View of Grid U-27**



**GRID DATA FIELD LOG – V-27**

<b>Project:</b>	Camp Bonneville Conservation & Restoration Project, Vancouver, WA		
<b>Prime Contract No:</b>	W8128F-06-2-0160	<b>MKM Project No:</b>	05-35-0032
<b>Task:</b>	8161 – Perimeter/CITA Fence	<b>Grid No.</b>	V-27
<b>Date Completed:</b>	01/10/07	<b>Surveyed Area:</b>	5,000.5 sq. ft.
<b>Team Number:</b>	3	<b>UXO Supervisor:</b>	John Clifford



GPS Coordinates		
	Northing	Easting
<b>A</b>	547129	5061835
<b>B</b>	547281	5061838
<b>C</b>		
<b>D</b>		
<b>E</b>		

Legend	
	Perimeter/CITA Fence
	10ft Clearance Area
	Selected Grid
	Intersection Point between Grid Boundary and Perimeter/CITA Fence
10 -	Item Number – Location. Please refer to Page 2 for details

Coordinate System: UTM NAD 83 Zone 10 N



PHOTO LOG



**Start Point of Grid V-27**



**Middle View of Grid V-27**



**Barbed Wire & Fence Posts in Grid V-27**

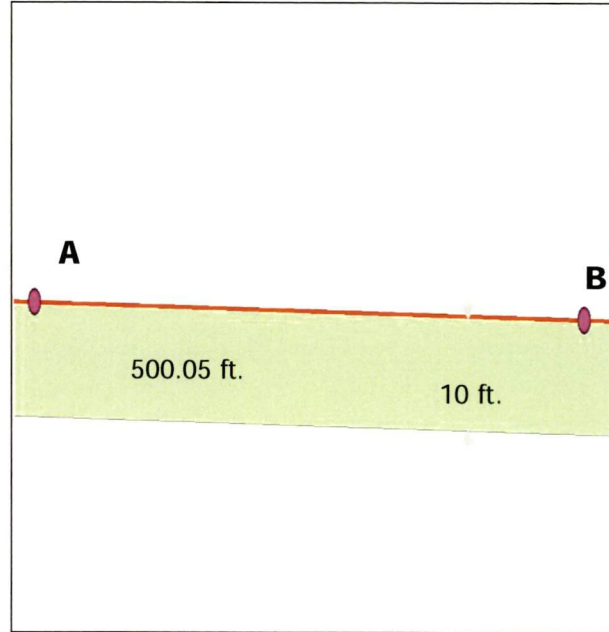
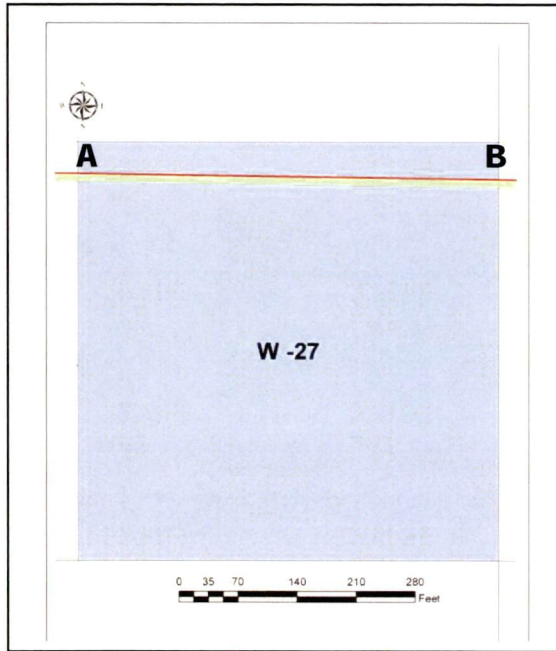


**End Point of Grid V-27**



### GRID DATA FIELD LOG – W-27

<b>Project:</b>	Camp Bonneville Conservation & Restoration Project, Vancouver, WA		
<b>Prime Contract No:</b>	W8128F-06-2-0160	<b>MKM Project No:</b>	05-35-0032
<b>Task:</b>	8161 – Perimeter/CITA Fence	<b>Grid No.</b>	W-27
<b>Date Completed:</b>	01/10/07	<b>Surveyed Area:</b>	5,000.5 sq. ft.
<b>Team Number:</b>	3	<b>UXO Supervisor:</b>	John Clifford



GPS Coordinates		
	Northing	Easting
<b>A</b>	547281	5061838
<b>B</b>	547434	5061841
<b>C</b>		
<b>D</b>		
<b>E</b>		

Legend	
	Perimeter/CITA Fence
	10ft Clearance Area
	Selected Grid
	Intersection Point between Grid Boundary and Perimeter/CITA Fence
10 -	Item Number – Location. Please refer to Page 2 for details

Coordinate System: UTM NAD 83 Zone 10 N



PHOTO LOG



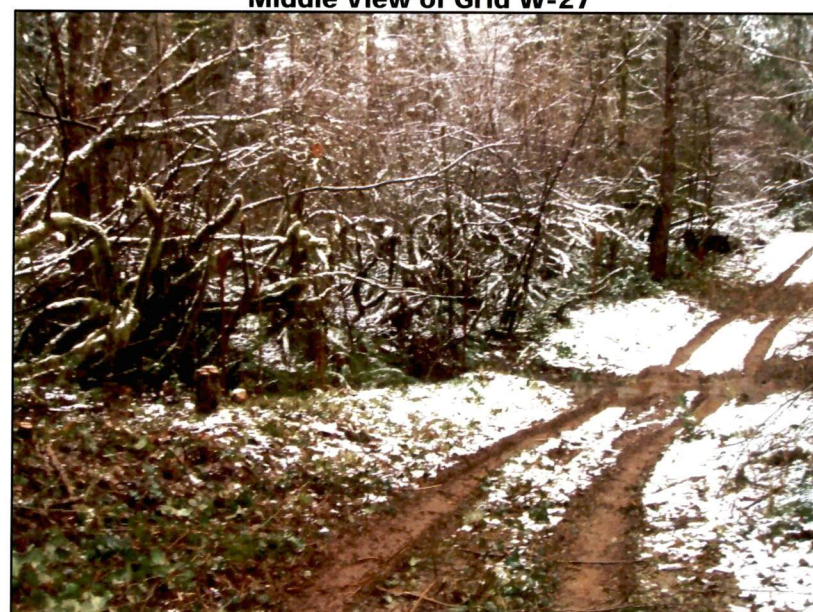
**Start Point of Grid W-27**



**Middle View of Grid W-27**



**Middle View of Grid W-27**

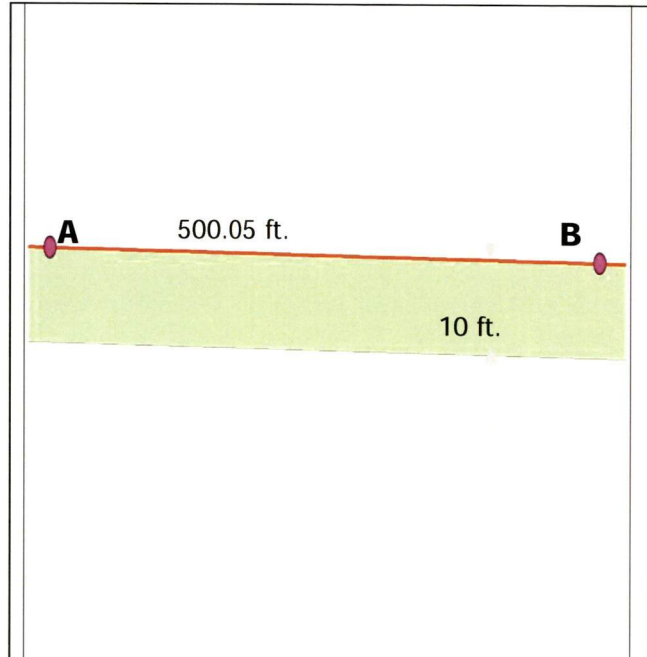
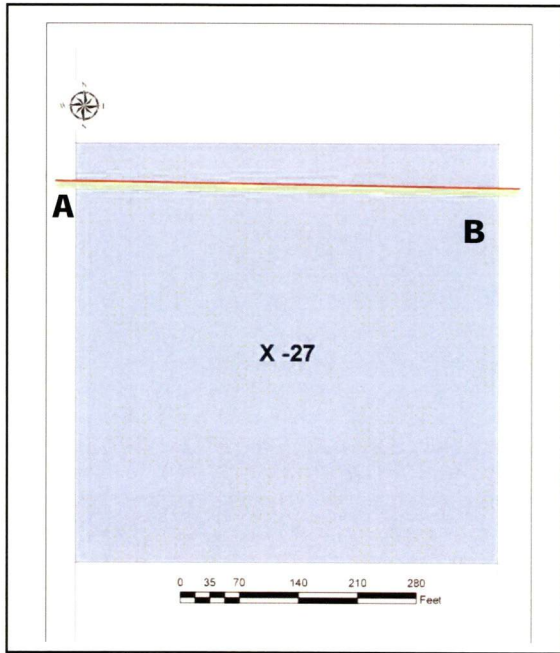


**End Point of Grid W-27**



**GRID DATA FIELD LOG – X-27**

<b>Project:</b>	Camp Bonneville Conservation & Restoration Project, Vancouver, WA		
<b>Prime Contract No:</b>	W8128F-06-2-0160	<b>MKM Project No:</b>	05-35-0032
<b>Task:</b>	8161 - Perimeter/CITA Fence	<b>Grid No.</b>	X-27
<b>Date Completed:</b>	01/11/07	<b>Surveyed Area:</b>	5,000.5 sq. ft.
<b>Team Number:</b>	3	<b>UXO Supervisor:</b>	John Clifford



<b>GPS Coordinates</b>		
	<b>Northing</b>	<b>Easting</b>
<b>A</b>	547434	5061841
<b>B</b>	547586	5061843
<b>C</b>		
<b>D</b>		
<b>E</b>		

<b>Legend</b>	
	Perimeter/CITA Fence
	10ft Clearance Area
	Selected Grid
	Intersection Point between Grid Boundary and Perimeter/CITA Fence
<b>10 - ★</b>	Item Number – Location. Please refer to Page 2 for details

Coordinate System: UTM NAD 83 Zone 10 N



PHOTO LOG



**Start Point of Grid X-27**



**Middle View in Grid X-27**



**Middle View of Grid X-27**

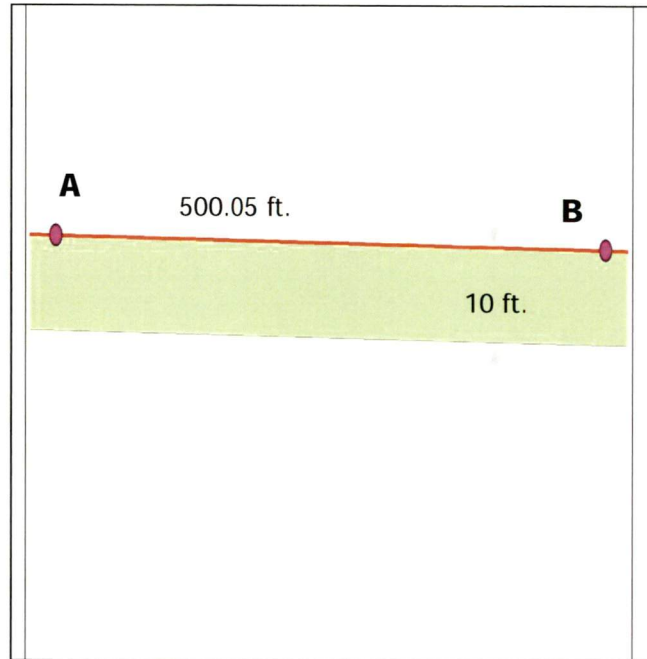
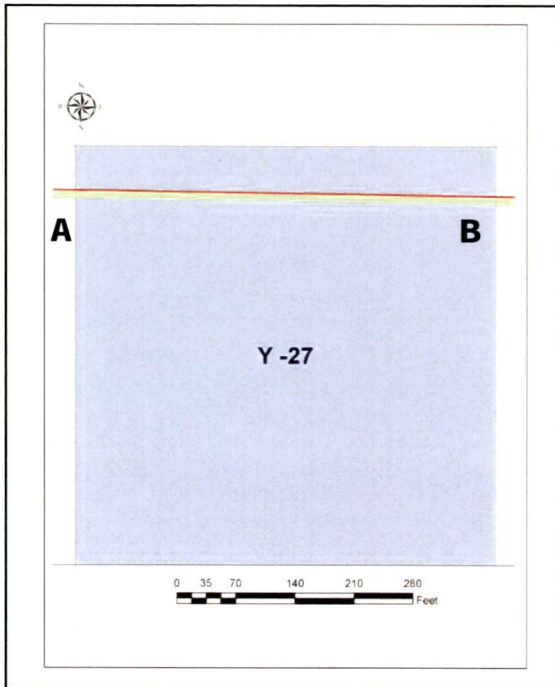


**End Point of Grid X-27**



**GRID DATA FIELD LOG – Y-27**

<b>Project:</b>	Camp Bonneville Conservation & Restoration Project, Vancouver, WA		
<b>Prime Contract No:</b>	W8128F-06-2-0160	<b>MKM Project No:</b>	05-35-0032
<b>Task:</b>	8161 - Perimeter/CITA Fence	<b>Grid No.</b>	Y-27
<b>Date Completed:</b>	01/11/07	<b>Surveyed Area:</b>	5,000.5 sq. ft.
<b>Team Number:</b>	3	<b>UXO Supervisor:</b>	John Clifford



GPS Coordinates		
	Northing	Easting
<b>A</b>	547586	5061843
<b>B</b>	547738	5061846
<b>C</b>		
<b>D</b>		
<b>E</b>		

Legend	
	Perimeter/CITA Fence
	10ft Clearance Area
	Selected Grid
	Intersection Point between Grid Boundary and Perimeter/CITA Fence
10 -	Item Number – Location. Please refer to Page 2 for details

Coordinate System: UTM NAD 83 Zone 10 N





PHOTO LOG



Start Point of Grid Y-27



Middle View in Grid Y-27



Middle View of Grid Y-27

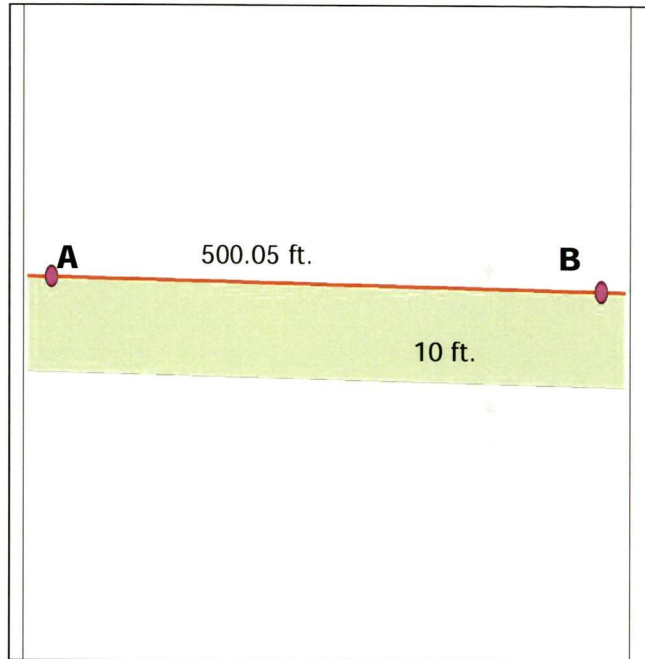
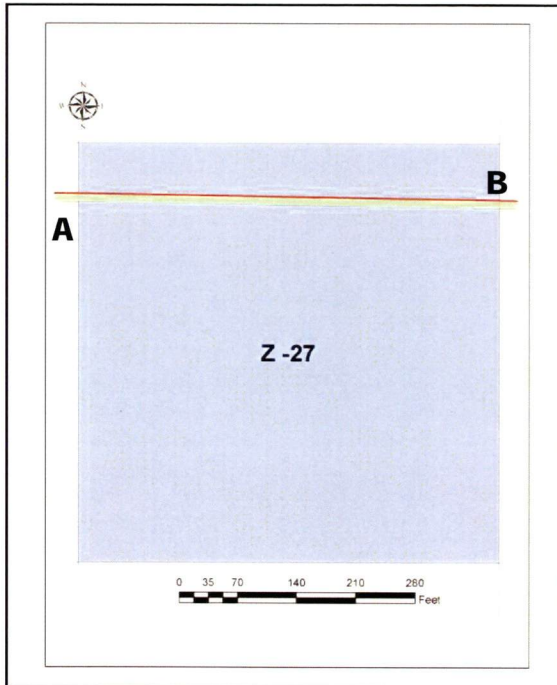


End Point of Grid Y-27



### GRID DATA FIELD LOG – Z-27

<b>Project:</b>	Camp Bonneville Conservation & Restoration Project, Vancouver, WA		
<b>Prime Contract No:</b>	W8128F-06-2-0160	<b>MKM Project No:</b>	05-35-0032
<b>Task:</b>	8161 - Perimeter/CITA Fence	<b>Grid No.</b>	Z-27
<b>Date Completed:</b>	01/11/07	<b>Surveyed Area:</b>	5,000.5 sq. ft.
<b>Team Number:</b>	3	<b>UXO Supervisor:</b>	John Clifford



#### GPS Coordinates

	<b>Northing</b>	<b>Easting</b>
<b>A</b>	547738	5061846
<b>B</b>	547891	5061848
<b>C</b>		
<b>D</b>		
<b>E</b>		

#### Legend

	Perimeter/CITA Fence
	10ft Clearance Area
	Selected Grid
	Intersection Point between Grid Boundary and Perimeter/CITA Fence
10 -	Item Number – Location. Please refer to Page 2 for details

Coordinate System: UTM NAD 83 Zone 10 N



PHOTO LOG



Start Point of Grid Z-27



Middle View in Grid Z-27



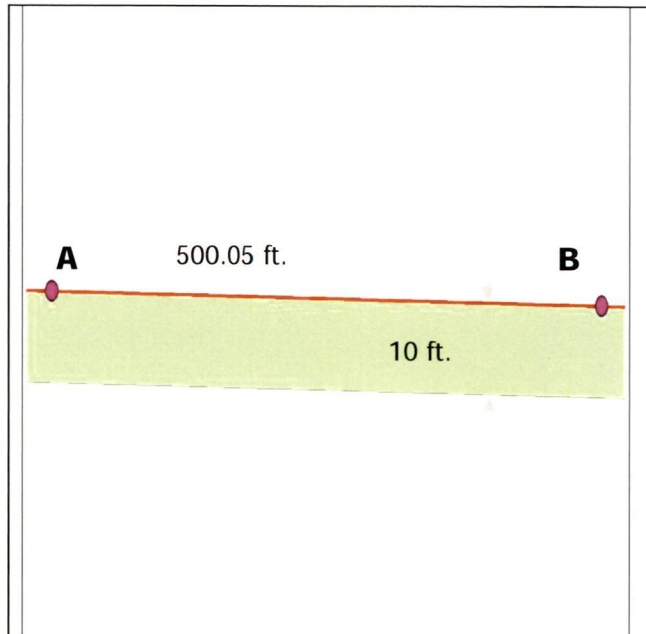
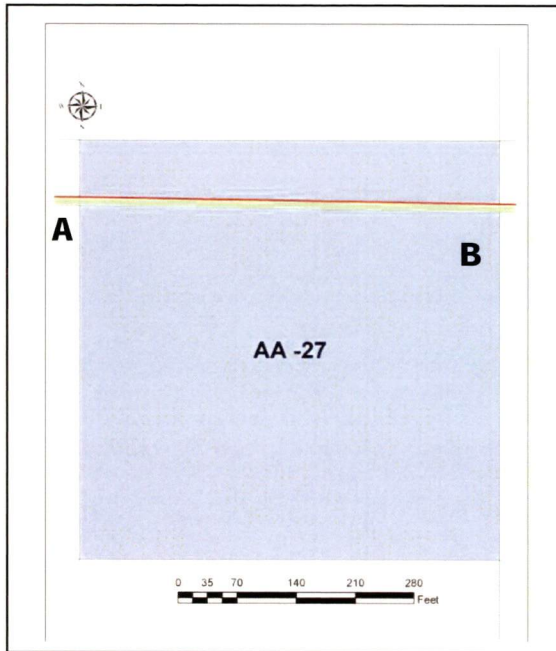
Middle View of Grid Z-27



End Point of Grid Z-27

### GRID DATA FIELD LOG – AA-27

<b>Project:</b>	Camp Bonneville Conservation & Restoration Project, Vancouver, WA		
<b>Prime Contract No:</b>	W8128F-06-2-0160	<b>MKM Project No:</b>	05-35-0032
<b>Task:</b>	8161 - Perimeter/CITA Fence	<b>Grid No.</b>	AA-27
<b>Date Completed:</b>	01/11/07	<b>Surveyed Area:</b>	5,000.5 sq. ft.
<b>Team Number:</b>	3	<b>UXO Supervisor:</b>	John Clifford



GPS Coordinates		
	Northing	Easting
<b>A</b>	547891	5061848
<b>B</b>	548043	5061851
<b>C</b>		
<b>D</b>		
<b>E</b>		

Legend	
	Perimeter/CITA Fence
	10ft Clearance Area
	Selected Grid
	Intersection Point between Grid Boundary and Perimeter/CITA Fence
10 -	Item Number – Location. Please refer to Page 2 for details

Coordinate System: UTM NAD 83 Zone 10 N



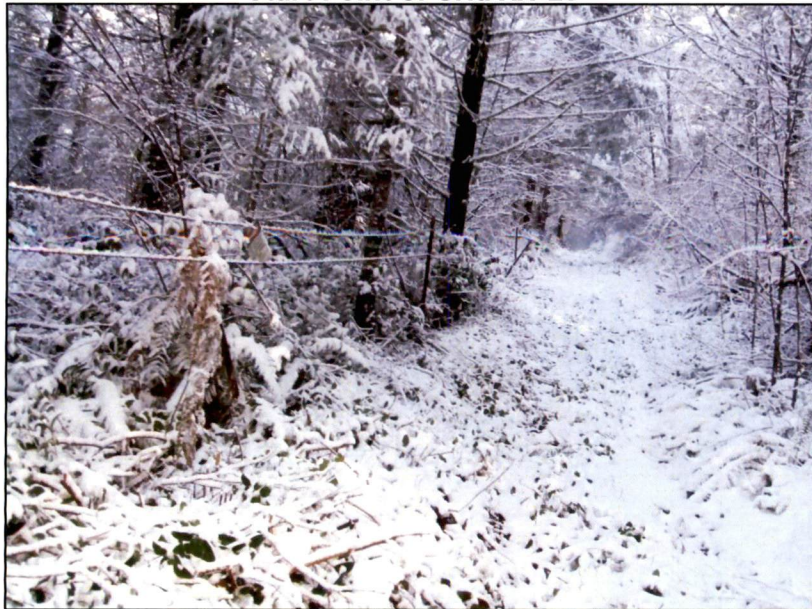
**PHOTO LOG**



**Start Point of Grid AA-27**



**Middle View in Grid AA-27**



**Middle View of Grid AA-27**

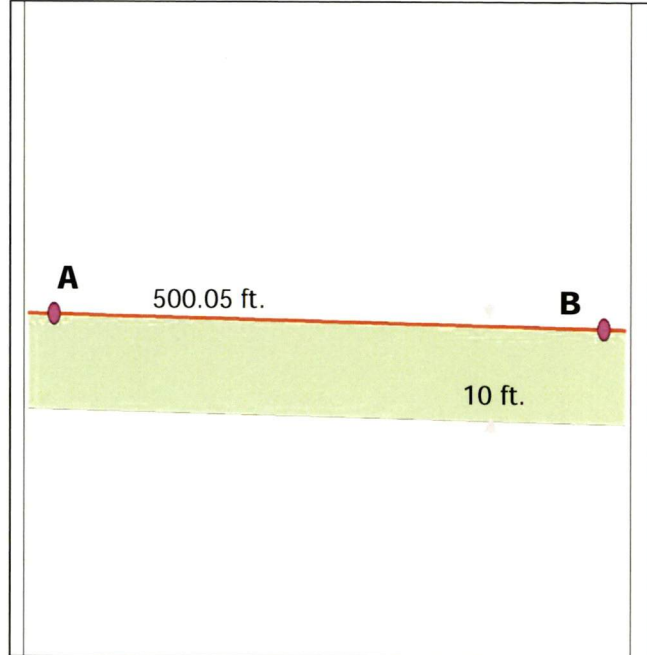
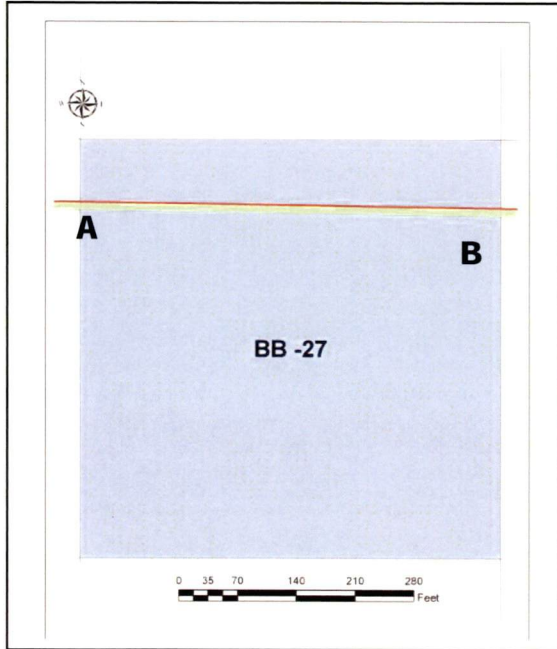


**End Point of Grid AA-27**



**GRID DATA FIELD LOG – BB-27**

<b>Project:</b>	Camp Bonneville Conservation & Restoration Project, Vancouver, WA		
<b>Prime Contract No:</b>	W8128F-06-2-0160	<b>MKM Project No:</b>	05-35-0032
<b>Task:</b>	8161 - Perimeter/CITA Fence	<b>Grid No.</b>	BB-27
<b>Date Completed:</b>	01/11/07	<b>Surveyed Area:</b>	5,000.5 sq. ft.
<b>Team Number:</b>	3	<b>UXO Supervisor:</b>	John Clifford



<b>GPS Coordinates</b>		
	<b>Northing</b>	<b>Easting</b>
<b>A</b>	548043	5061851
<b>B</b>	548195	5061853
<b>C</b>		
<b>D</b>		
<b>E</b>		

<b>Legend</b>	
	Perimeter/CITA Fence
	10ft Clearance Area
	Selected Grid
	Intersection Point between Grid Boundary and Perimeter/CITA Fence
10 -	Item Number – Location. Please refer to Page 2 for details

Coordinate System: UTM NAD 83 Zone 10 N





PHOTO LOG



Start Point of Grid BB-27



Middle View of Grid BB-27



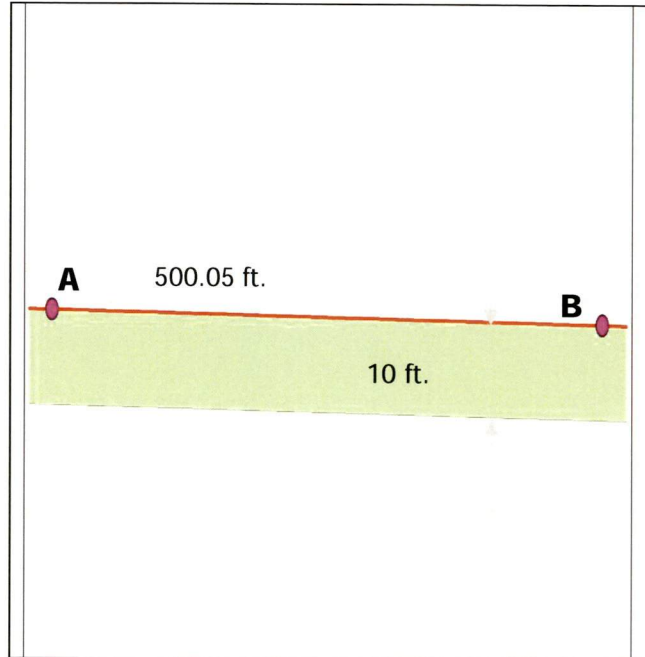
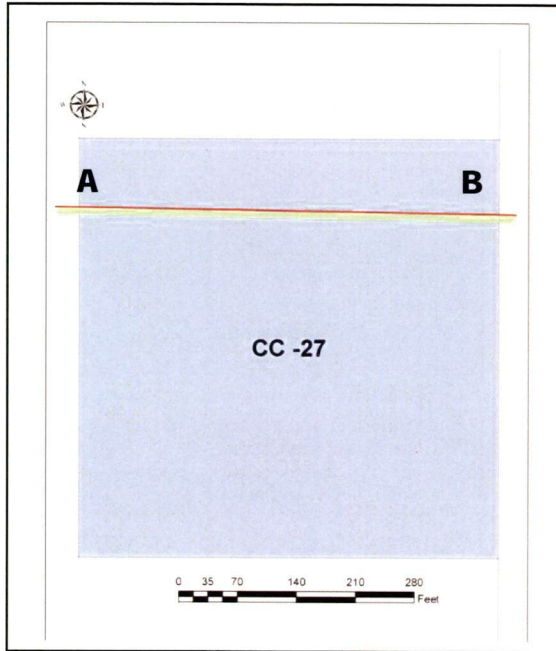
Middle View of Grid BB-27



End Point of Grid BB-27

### GRID DATA FIELD LOG – CC-27

<b>Project:</b>	Camp Bonneville Conservation & Restoration Project, Vancouver, WA		
<b>Prime Contract No:</b>	W8128F-06-2-0160	<b>MKM Project No:</b>	05-35-0032
<b>Task:</b>	8161 - Perimeter/CITA Fence	<b>Grid No.</b>	CC-27
<b>Date Completed:</b>	01/11/07	<b>Surveyed Area:</b>	5,000.5 sq. ft.
<b>Team Number:</b>	3	<b>UXO Supervisor:</b>	John Clifford



GPS Coordinates		
	Northing	Easting
<b>A</b>	548195	5061853
<b>B</b>	548348	5061856
<b>C</b>		
<b>D</b>		
<b>E</b>		

Legend	
	Perimeter/CITA Fence
	10ft Clearance Area
	Selected Grid
	Intersection Point between Grid Boundary and Perimeter/CITA Fence
10 -	Item Number – Location. Please refer to Page 2 for details

Coordinate System: UTM NAD 83 Zone 10 N



PHOTO LOG



**Start Point in Grid CC27**



**Middle View in Grid CC27**



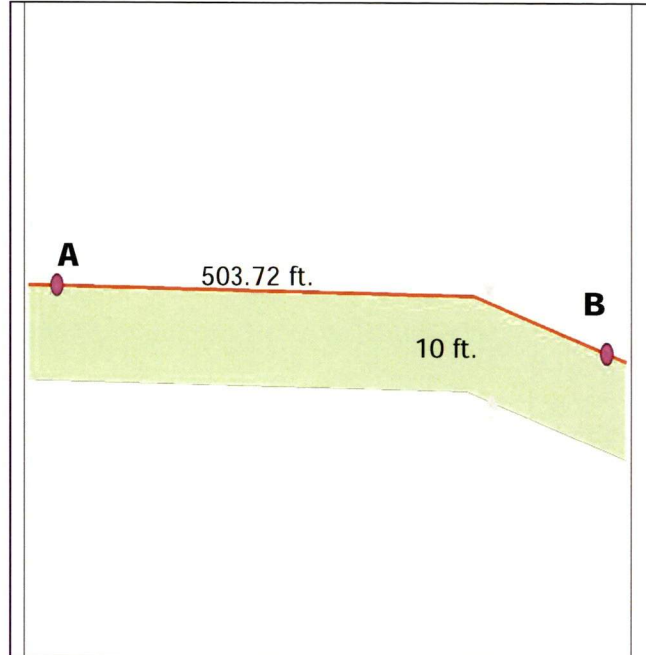
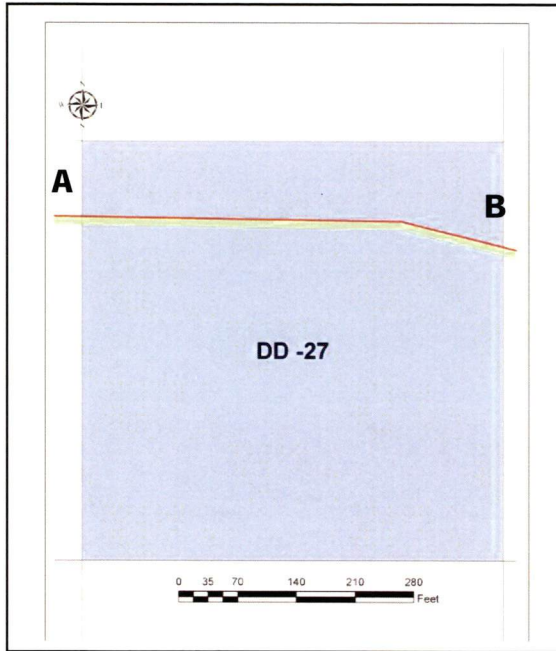
**Middle View of Grid CC27**



**End Point of Grid CC27**

### GRID DATA FIELD LOG – DD-27

<b>Project:</b>	Camp Bonneville Conservation & Restoration Project, Vancouver, WA		
<b>Prime Contract No:</b>	W8128F-06-2-0160	<b>MKM Project No:</b>	05-35-0032
<b>Task:</b>	8161 - Perimeter/CITA Fence	<b>Grid No.</b>	DD-27
<b>Date Completed:</b>	01/11/07	<b>Surveyed Area:</b>	5 037.2 sq. ft.
<b>Team Number:</b>	3	<b>UXO Supervisor:</b>	John Clifford



GPS Coordinates		
	Northing	Easting
<b>A</b>	548348	5061856
<b>B</b>	548500	5061850
<b>C</b>		
<b>D</b>		
<b>E</b>		

Legend	
	Perimeter/CITA Fence
	10ft Clearance Area
	Selected Grid
	Intersection Point between Grid Boundary and Perimeter/CITA Fence
10 -	Item Number – Location. Please refer to Page 2 for details

Coordinate System: UTM NAD 83 Zone 10 N



PHOTO LOG



Start Point in Grid DD-27



Middle View in Grid DD-27



Middle View in Grid DD-27



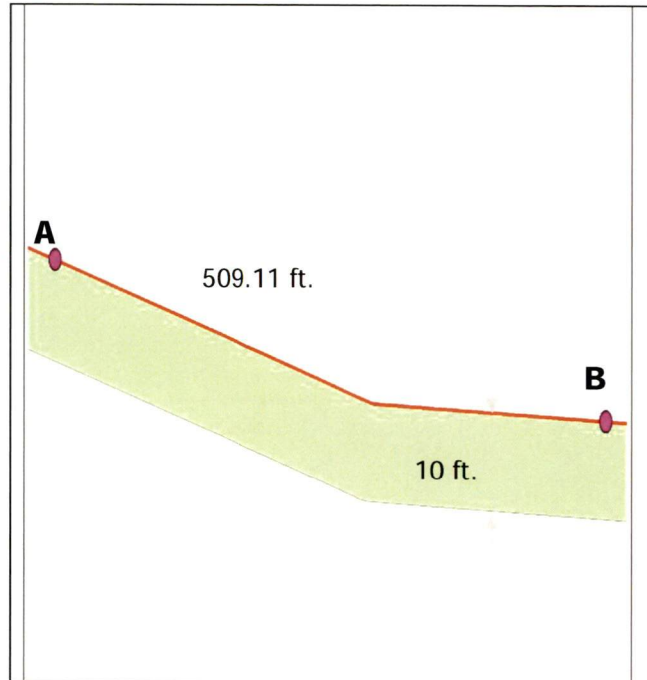
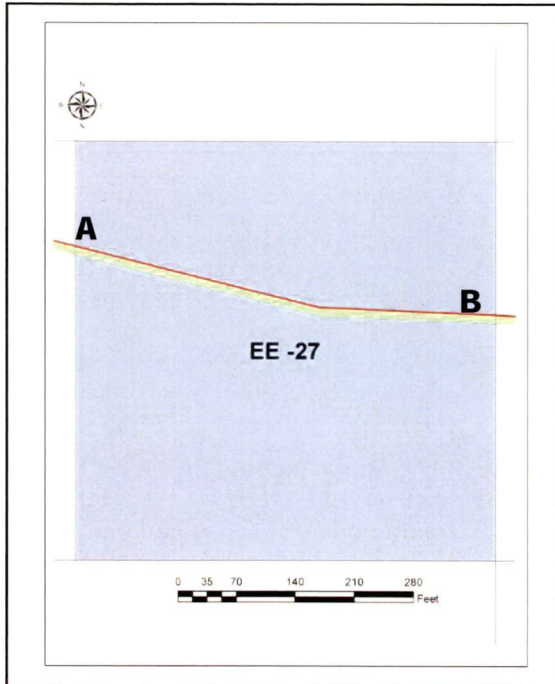
End Point of Grid DD-27





**GRID DATA FIELD LOG – EE-27**

<b>Project:</b>	Camp Bonneville Conservation & Restoration Project, Vancouver, WA		
<b>Prime Contract No:</b>	W8128F-06-2-0160	<b>MKM Project No:</b>	05-35-0032
<b>Task:</b>	8161 - Perimeter/CITA Fence	<b>Grid No.</b>	EE-27
<b>Date Completed:</b>	01/11/07	<b>Surveyed Area:</b>	5,091.1 sq. ft.
<b>Team Number:</b>	3	<b>UXO Supervisor:</b>	John Clifford



**GPS Coordinates**

	<b>Northing</b>	<b>Easting</b>
<b>A</b>	548500	5061850
<b>B</b>	548653	5061830
<b>C</b>		
<b>D</b>		
<b>E</b>		

**Legend**

	Perimeter/CITA Fence
	10ft Clearance Area
	Selected Grid
	Intersection Point between Grid Boundary and Perimeter/CITA Fence
<b>10 - ☆</b>	Item Number – Location. Please refer to Page 2 for details

Coordinate System: UTM NAD 83 Zone 10 N



**PHOTO LOG**



**Start Point in Grid EE-27**



**Middle View in Grid EE-27**



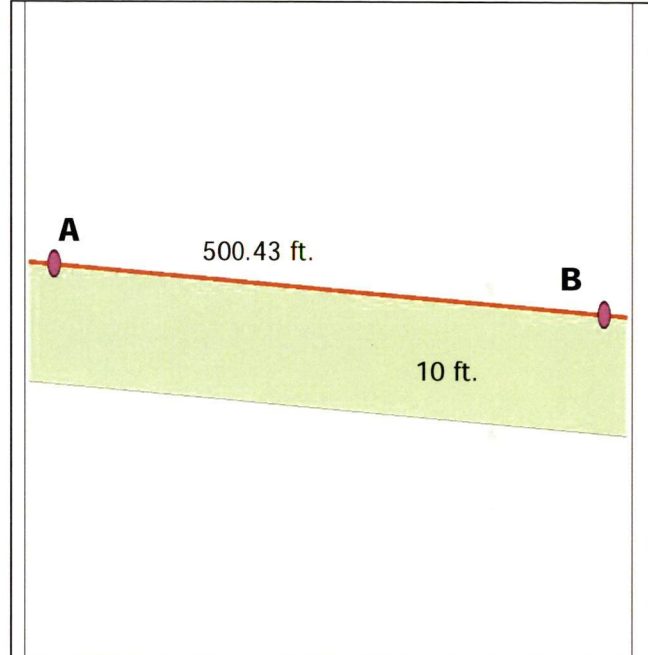
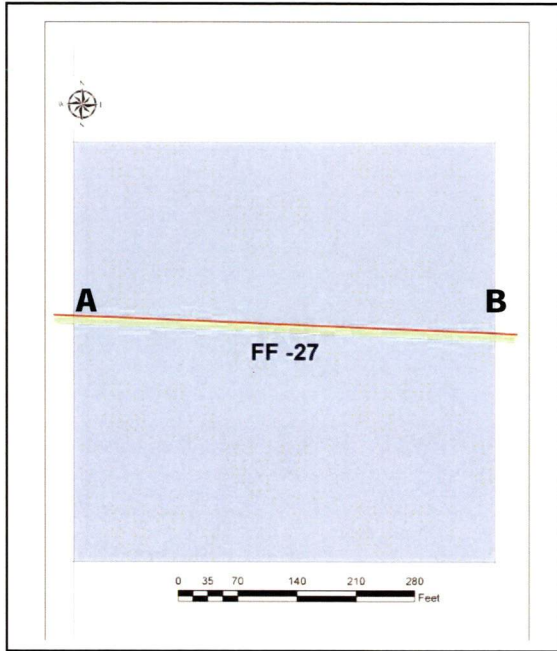
**Collapsed Fence of Grid EE-27**



**End Point of Grid EE-27**

### GRID DATA FIELD LOG – FF-27

<b>Project:</b>	Camp Bonneville Conservation & Restoration Project, Vancouver, WA		
<b>Prime Contract No:</b>	W8128F-06-2-0160	<b>MKM Project No:</b>	05-35-0032
<b>Task:</b>	8161 - Perimeter/CITA Fence	<b>Grid No.</b>	FF-27
<b>Date Completed:</b>	01/11/07	<b>Surveyed Area:</b>	5,004.3 sq. ft.
<b>Team Number:</b>	3	<b>UXO Supervisor:</b>	John Clifford



GPS Coordinates		
	Northing	Easting
<b>A</b>	548653	5061830
<b>B</b>	548806	5061829
<b>C</b>		
<b>D</b>		
<b>E</b>		

Legend	
	Perimeter/CITA Fence
	10ft Clearance Area
	Selected Grid
	Intersection Point between Grid Boundary and Perimeter/CITA Fence
10 -	Item Number – Location. Please refer to Page 2 for details

Coordinate System: UTM NAD 83 Zone 10 N



PHOTO LOG



**Start Point in Grid FF-27**



**Middle View in Grid FF-27**



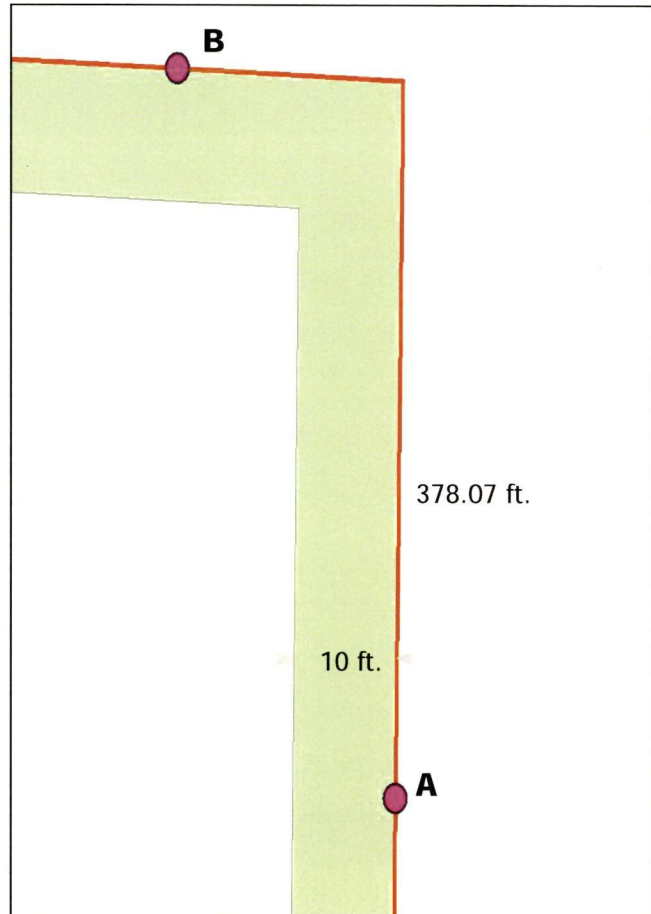
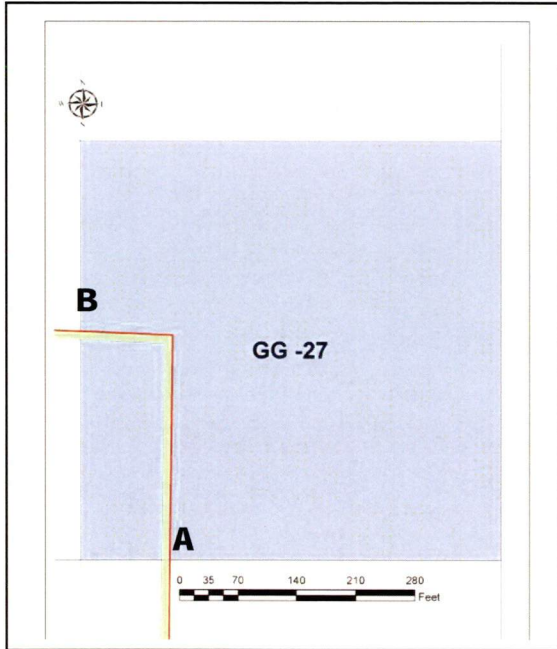
**Middle View of Grid FF-27**



**End Point of Grid FF-27**

### GRID DATA FIELD LOG – GG-27

<b>Project:</b>	Camp Bonneville Conservation & Restoration Project, Vancouver, WA		
<b>Prime Contract No:</b>	W8128F-06-2-0160	<b>MKM Project No:</b>	05-35-0032
<b>Task:</b>	8161 - Perimeter/CITA Fence	<b>Grid No.</b>	GG-27
<b>Date Completed:</b>	01/11/07	<b>Surveyed Area:</b>	3,780.7 sq. ft.
<b>Team Number:</b>	3	<b>UXO Supervisor:</b>	John Clifford



GPS Coordinates		
	Northing	Easting
<b>A</b>	548806	5061829
<b>B</b>	548841	5061746
<b>C</b>		
<b>D</b>		
<b>E</b>		

Legend	
	Perimeter/CITA Fence
	10ft Clearance Area
	Selected Grid
	Intersection Point between Grid Boundary and Perimeter/CITA Fence
10 -	Item Number – Location. Please refer to Page 2 for details

Coordinate System: UTM NAD 83 Zone 10 N





**PHOTO LOG**



**Start Point in Grid GG-27**



**Middle View in Grid GG-27**



**Middle View of Grid GG-27**

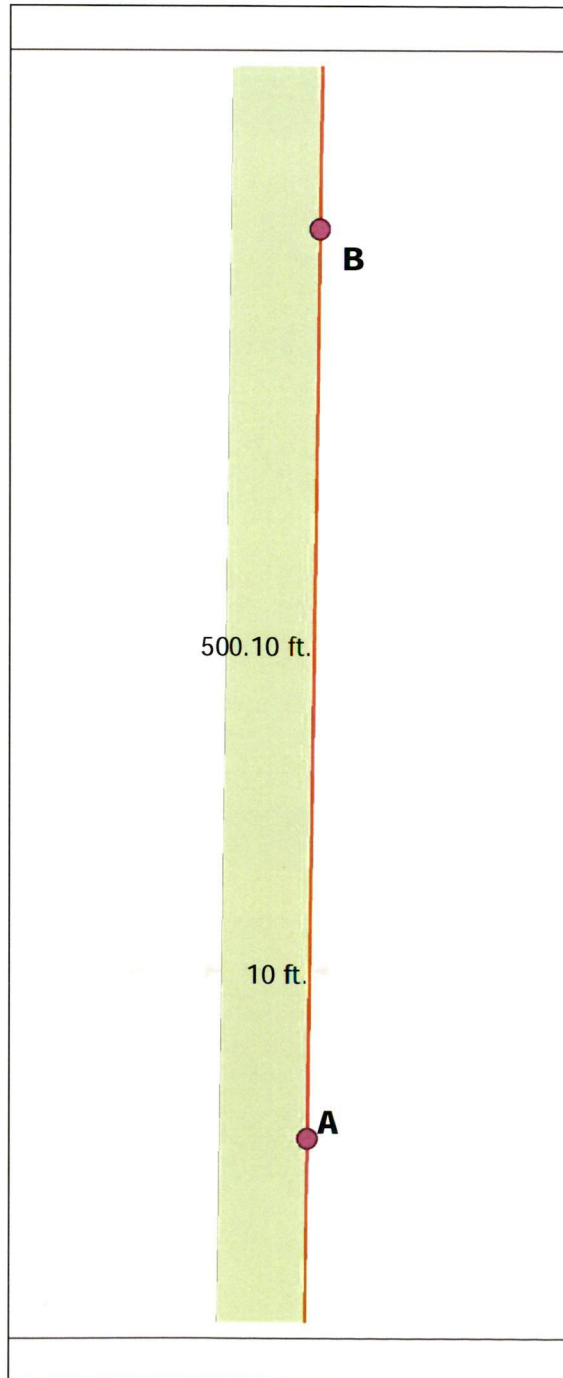
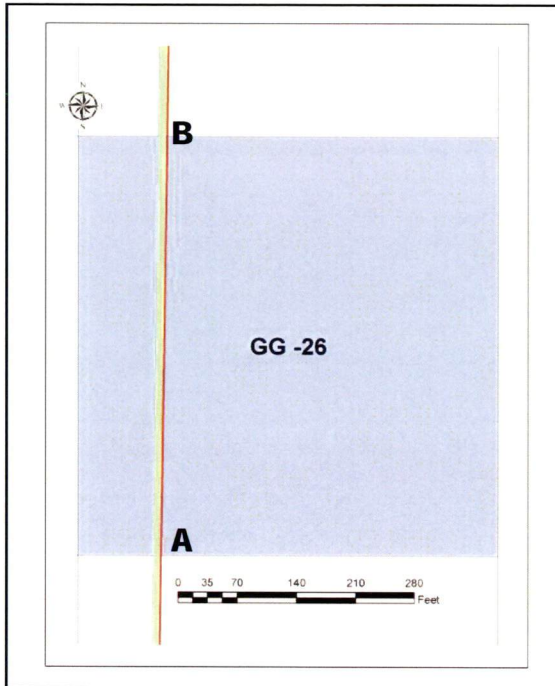


**End Point of Grid GG-27**



**GRID DATA FIELD LOG – GG-26**

<b>Project:</b>	Camp Bonneville Conservation & Restoration Project, Vancouver, WA		
<b>Prime Contract No:</b>	W8128F-06-2-0160	<b>MKM Project No:</b>	05-35-0032
<b>Task:</b>	8161 - Perimeter/CITA Fence	<b>Grid No.</b>	GG-26
<b>Date Completed:</b>	01/11/07	<b>Surveyed Area:</b>	5,001.0 sq. ft.
<b>Team Number:</b>	3	<b>UXO Supervisor:</b>	John Clifford



GPS Coordinates		
	Northing	Easting
<b>A</b>	548841	5061746
<b>B</b>	548844	5061593
<b>C</b>		
<b>D</b>		
<b>E</b>		

Legend	
	Perimeter/CITA Fence
	10ft Clearance Area
	Selected Grid
	Intersection Point between Grid Boundary and Perimeter/CITA Fence
10 - ☆	Item Number – Location. Please refer to Page 2 for details

Coordinate System: UTM NAD 83 Zone 10 N



PHOTO LOG



**Start Point in Grid GG-26**



**Middle View in Grid GG-26**



**Middle View of Grid GG-26**

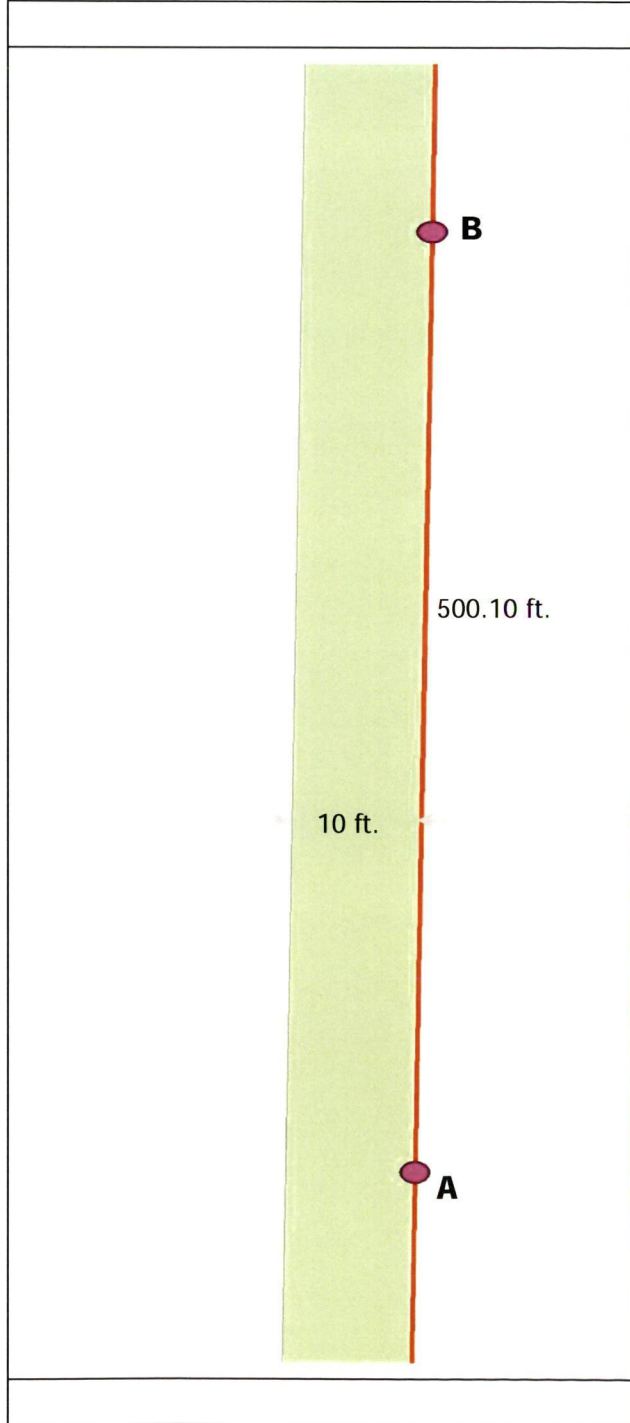
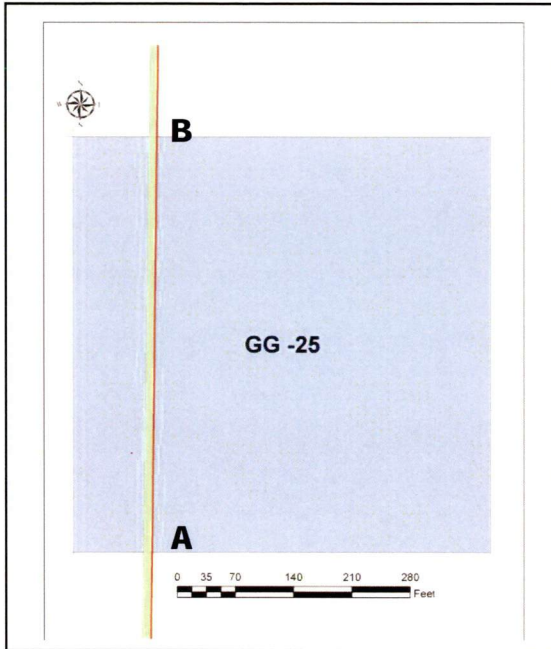


**End Point of Grid GG-26**



**GRID DATA FIELD LOG – GG-25**

<b>Project:</b>	Camp Bonneville Conservation & Restoration Project, Vancouver, WA		
<b>Prime Contract No:</b>	W8128F-06-2-0160	<b>MKM Project No:</b>	05-35-0032
<b>Task:</b>	8161 – Perimeter/CITA Fence	<b>Grid No.</b>	GG-25
<b>Date Completed:</b>	01/12/07	<b>Surveyed Area:</b>	5,001.0 sq. ft.
<b>Team Number:</b>	3	<b>UXO Supervisor:</b>	John Clifford



GPS Coordinates		
	Northing	Easting
<b>A</b>	548844	5061593
<b>B</b>	548846	5061441
<b>C</b>		
<b>D</b>		
<b>E</b>		

Legend	
	Perimeter/CITA Fence
	10ft Clearance Area
	Selected Grid
	Intersection Point between Grid Boundary and Perimeter/CITA Fence
<b>10 - ☆</b>	Item Number – Location. Please refer to Page 2 for details

Coordinate System: UTM NAD 83 Zone 10 N



PHOTO LOG



**Start Point of Grid GG-25**



**Middle View of Grid GG-25**



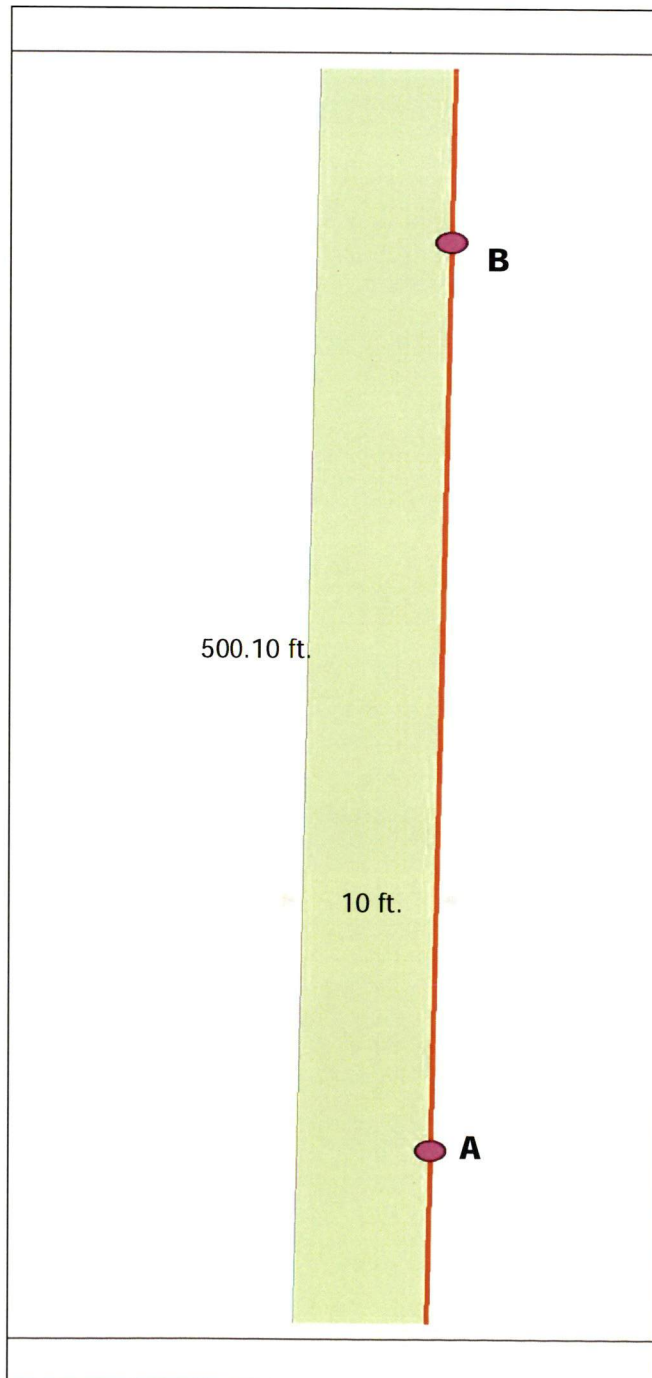
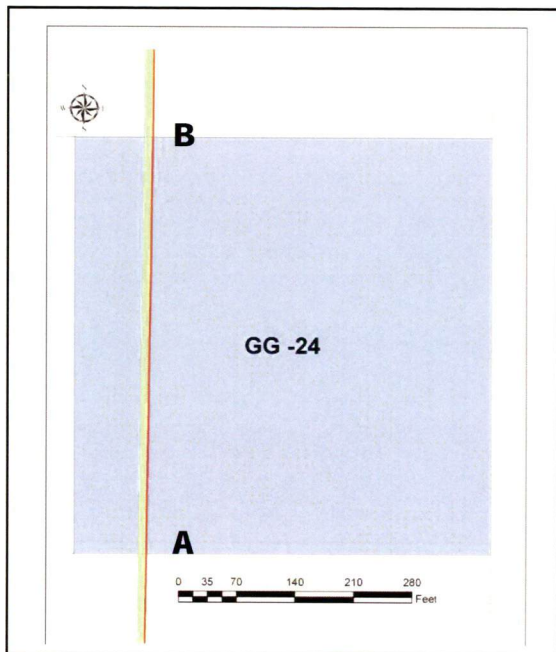
**Middle View of Grid GG-25**



**End Point of Grid GG-25**

### GRID DATA FIELD LOG – GG-24

<b>Project:</b>	Camp Bonneville Conservation & Restoration Project, Vancouver, WA		
<b>Prime Contract No:</b>	W8128F-06-2-0160	<b>MKM Project No:</b>	05-35-0032
<b>Task:</b>	8161 – Perimeter/CITA Fence	<b>Grid No.</b>	GG-24
<b>Date Completed:</b>	01/12/07	<b>Surveyed Area:</b>	5,001.0 sq. ft.
<b>Team Number:</b>	3	<b>UXO Supervisor:</b>	John Clifford



GPS Coordinates		
	Northing	Easting
<b>A</b>	548846	5061441
<b>B</b>	548849	5061289
<b>C</b>		
<b>D</b>		
<b>E</b>		

Legend	
	Perimeter/CITA Fence
	10ft Clearance Area
	Selected Grid
	Intersection Point between Grid Boundary and Perimeter/CITA Fence
10 -	Item Number – Location. Please refer to Page 2 for details

Coordinate System: UTM NAD 83 Zone 10 N





PHOTO LOG



Start point of Grid GG-24



Barbed wire under (hot) rock



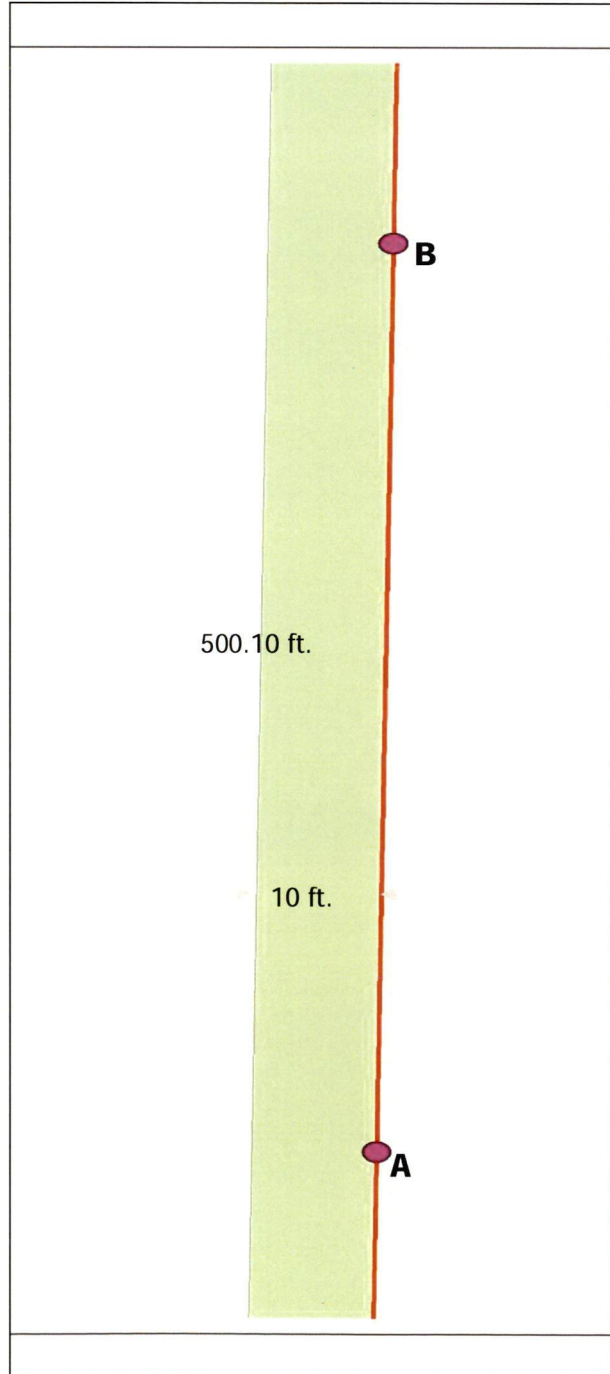
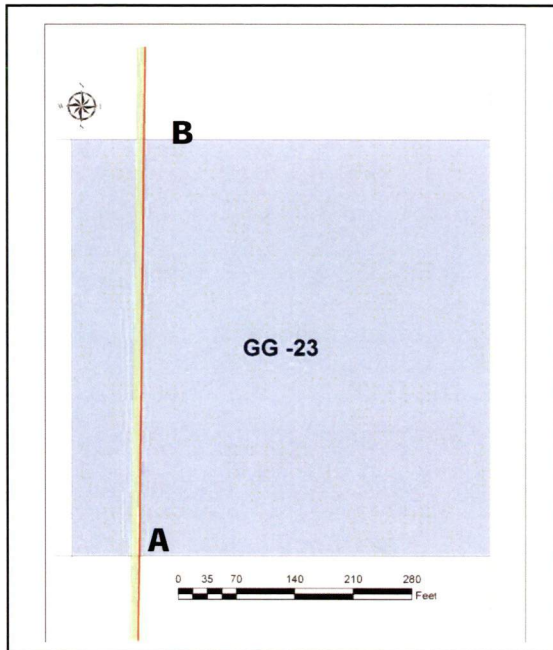
End point of Grid GG-24



Middle View of Grid GG-24

### GRID DATA FIELD LOG – GG-23

<b>Project:</b>	Camp Bonneville Conservation & Restoration Project, Vancouver, WA		
<b>Prime Contract No:</b>	W8128F-06-2-0160	<b>MKM Project No:</b>	05-35-0032
<b>Task:</b>	8161 – Perimeter/CITA Fence	<b>Grid No.</b>	GG-23
<b>Date Completed:</b>	01/12/07	<b>Surveyed Area:</b>	5,001.0 sq. ft.
<b>Team Number:</b>	3	<b>UXO Supervisor:</b>	John Clifford



GPS Coordinates		
	Northing	Easting
<b>A</b>	548849	5061289
<b>B</b>	548852	5061136
<b>C</b>		
<b>D</b>		
<b>E</b>		

Legend	
	Perimeter/CITA Fence
	10ft Clearance Area
	Selected Grid
	Intersection Point between Grid Boundary and Perimeter/CITA Fence
10 -	Item Number – Location. Please refer to Page 2 for details

Coordinate System: UTM NAD 83 Zone 10 N



**PHOTO LOG**



**Start Point of Grid GG-23**



**Ferrous rock within Grid GG-23**



**Collapsed fence & sign within Grid GG-23**

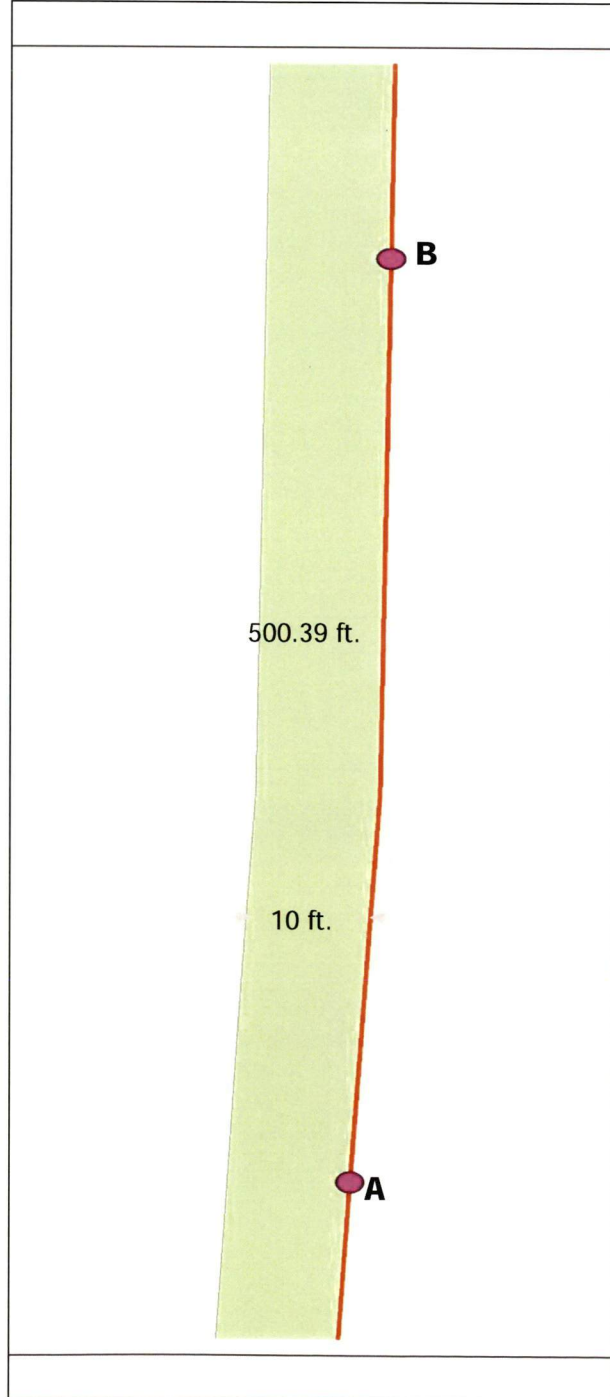
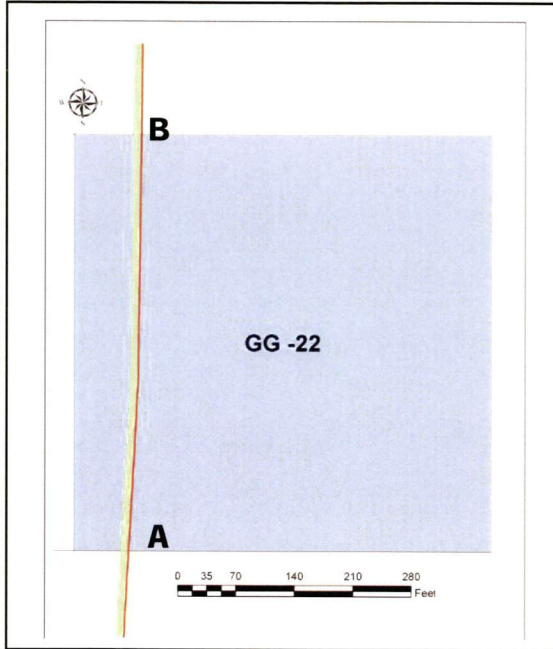


**End Point of Grid GG-23**



**GRID DATA FIELD LOG – GG-22**

<b>Project:</b>	Camp Bonneville Conservation & Restoration Project, Vancouver, WA		
<b>Prime Contract No:</b>	W8128F-06-2-0160	<b>MKM Project No:</b>	05-35-0032
<b>Task:</b>	8161 – Perimeter/CITA Fence	<b>Grid No.</b>	GG-22
<b>Date Completed:</b>	01/12/07	<b>Surveyed Area:</b>	5,003.9 sq. ft.
<b>Team Number:</b>	3	<b>UXO Supervisor:</b>	John Clifford



GPS Coordinates		
	Northing	Easting
<b>A</b>	548852	5061136
<b>B</b>	548852	5060984
<b>C</b>		
<b>D</b>		
<b>E</b>		

Legend	
	Perimeter/CITA Fence
	10ft Clearance Area
	Selected Grid
	Intersection Point between Grid Boundary and Perimeter/CITA Fence
10 -	Item Number – Location. Please refer to Page 2 for details

Coordinate System: UTM NAD 83 Zone 10 N