

# Reserve Silica Reclamation Site Cleanup Status Update October 4, 2021

Solid Waste Management Program  
Northwest Regional Office



# Ecology Contacts

## **Site managers**

Alan Noell, PhD, PE

Tim O'Connor, LHG

## **Public participation coordinator**

Nancy Lui

## **Communication manager**

Dave Bennett

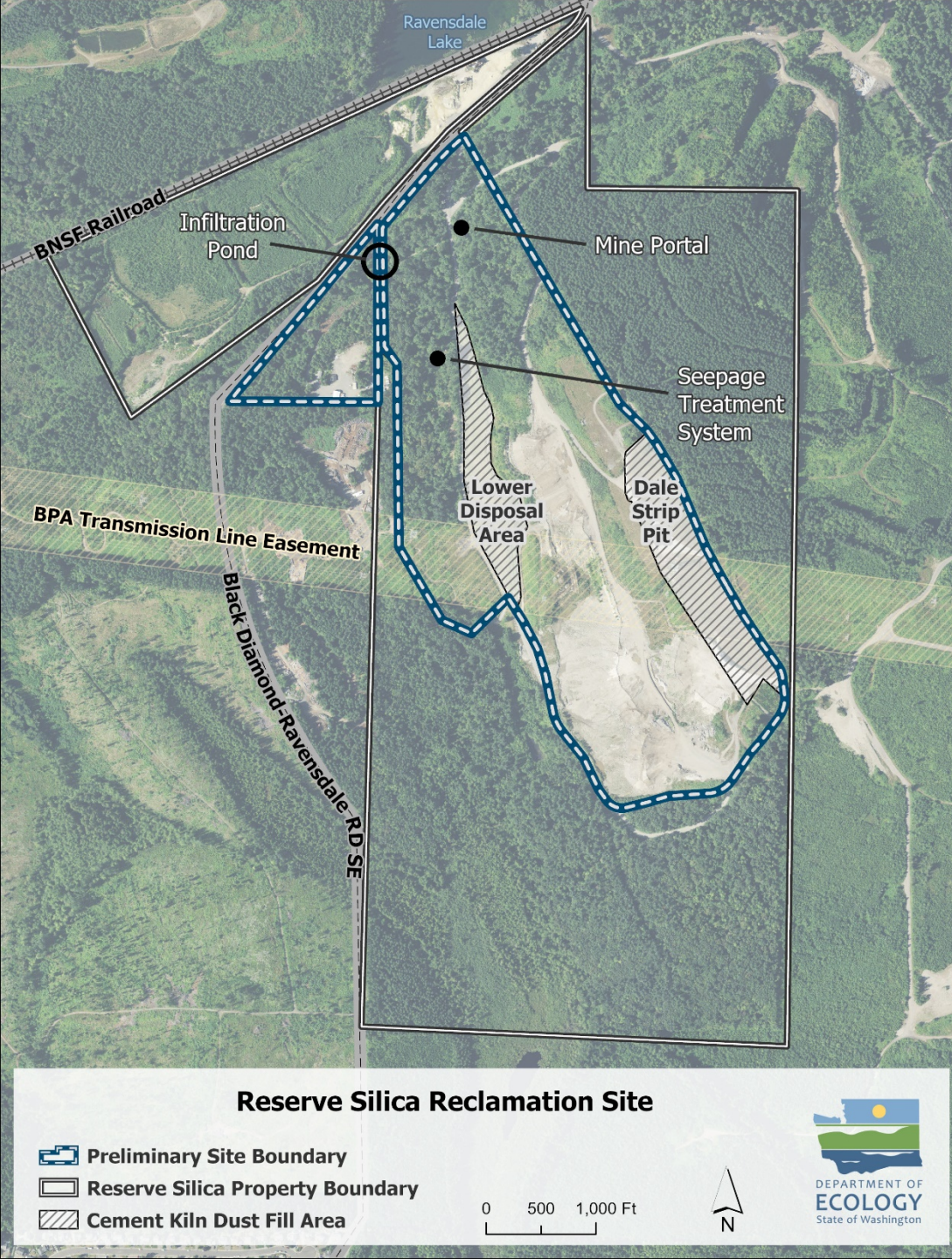






# Quick Refresher

- Coal and Sand Mining
- Cement Kiln Dust (CKD) Reclamation
- CKD Leachate Release
- Treatment System





# Coal Map Overlay



# Regulatory Framework

- Landfill post-closure care permit
  - Requires maintenance and monitoring
- Interim cleanup activities
  - Cap improvements
  - Groundwater and stormwater diversion
  - Seepage collection & treatment
- Agreed Order
  - Cleanup per Model Toxics Control Act
  - Remedial Investigation (RI)
  - Feasibility Study (FS)
  - Cleanup Action Plan (CAP)



# RI/FS Work Plan

Ecology website

<https://apps.ecology.wa.gov/gsp/Website.aspx?csid=4728>

Maple Valley Library  
21844 SE 248<sup>th</sup> Street  
Maple Valley, WA



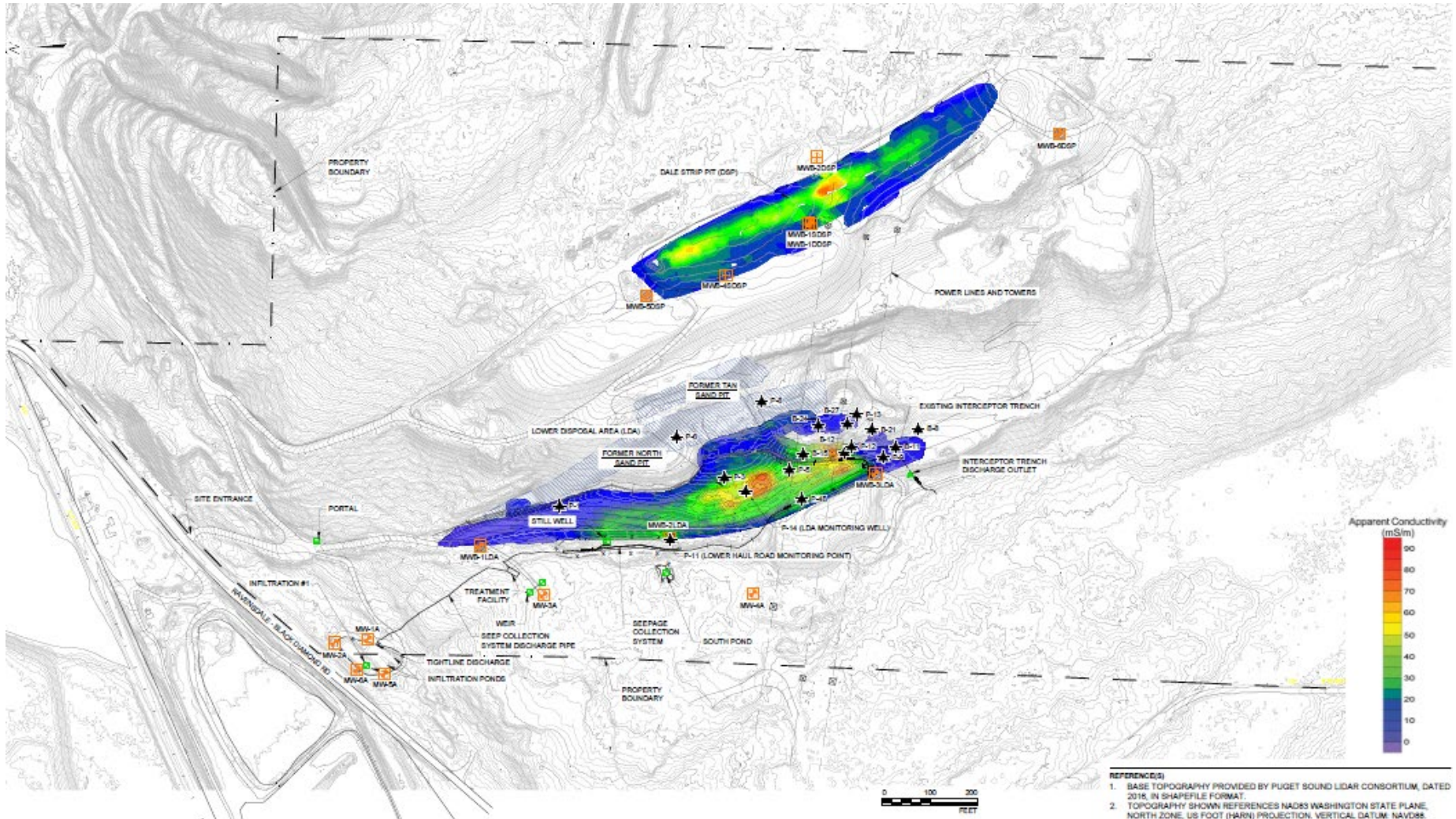
# Completed RI Activities

- Geophysical surveys
- Monitoring well installation
- Evaluation of source area contaminants





# EM-31 Surveys of DSP and LDA

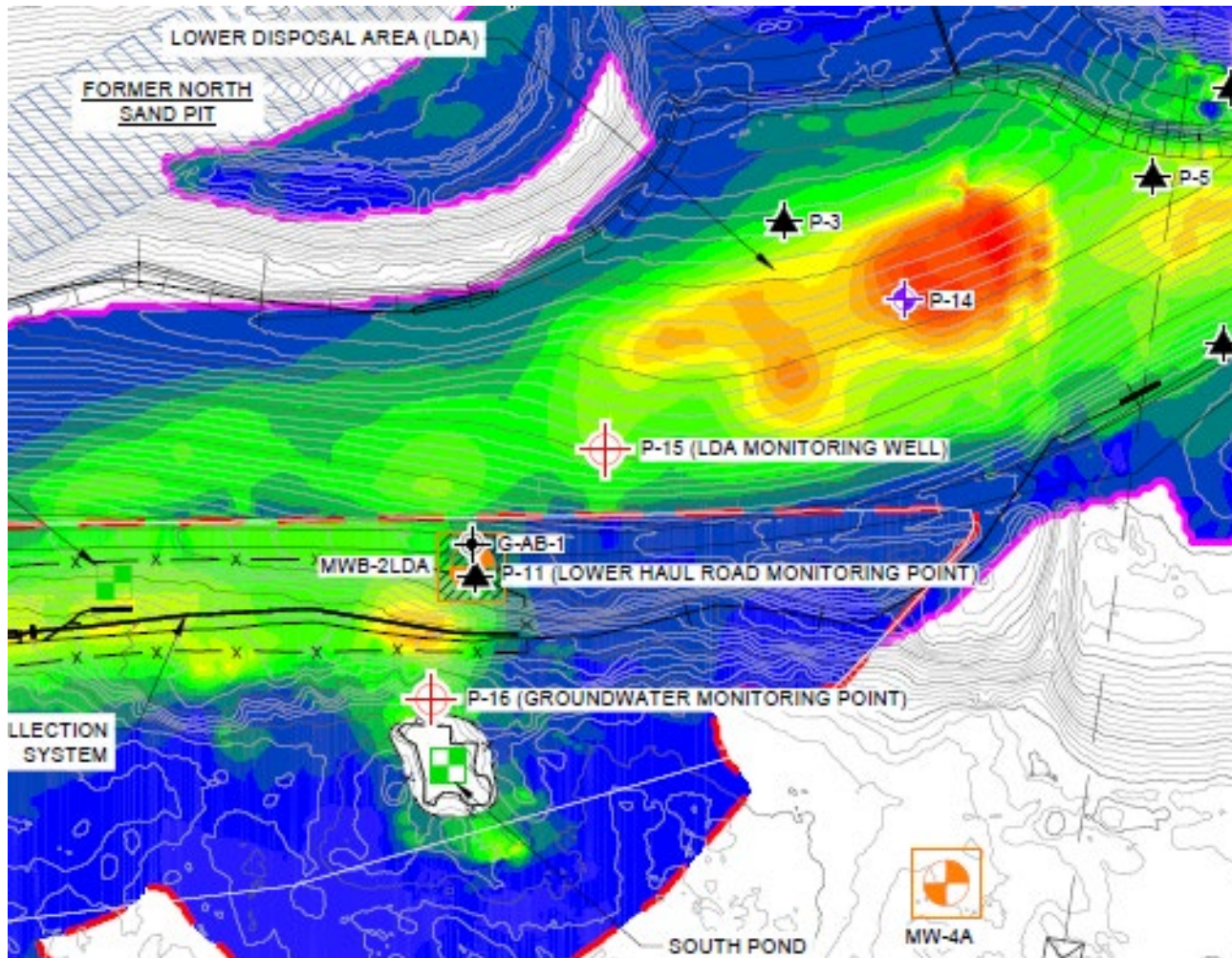








# Source Area Evaluation



# Planned RI Activities

- Groundwater monitoring
- Surface water monitoring
- Pond sediment sampling
- Seepage area soil sampling





# Questions

Alan Noell

[Alan.Noell@ecy.wa.gov](mailto:Alan.Noell@ecy.wa.gov)

425-213-4803

Tim O'Connor

[Tim.OConnor@ecy.wa.gov](mailto:Tim.OConnor@ecy.wa.gov)

425-389-2695

<https://apps.ecology.wa.gov/gsp/Sitepage.aspx?csid=4728>

