



NOTES

- PARK BOUNDARY, INCLUDING SDOT ROW AND PORT OF SEATTLE PARCELS, REPRESENT THE USABLE AREAS OF PARK.
- AERIAL IMAGE 4/4/2021, GOOGLE MAPS.
- AERIAL DOES NOT REPRESENT CURRENT CONDITIONS AT THE PARK. RECENT RENOVATIONS COMPLETED IN 2021.

LEGEND

- PROPERTY LINE
- WATER SERVICE LINE
- SANITARY SIDE SEWER
- LINEAR DISTRIBUTION TRENCH



REVIEWED: _____ DATE _____
 PARK ENGINEER _____

All work done in accordance with the City of Seattle Standard Plans and Specifications in effect on the date shown above, and approved by Seattle Recreation.

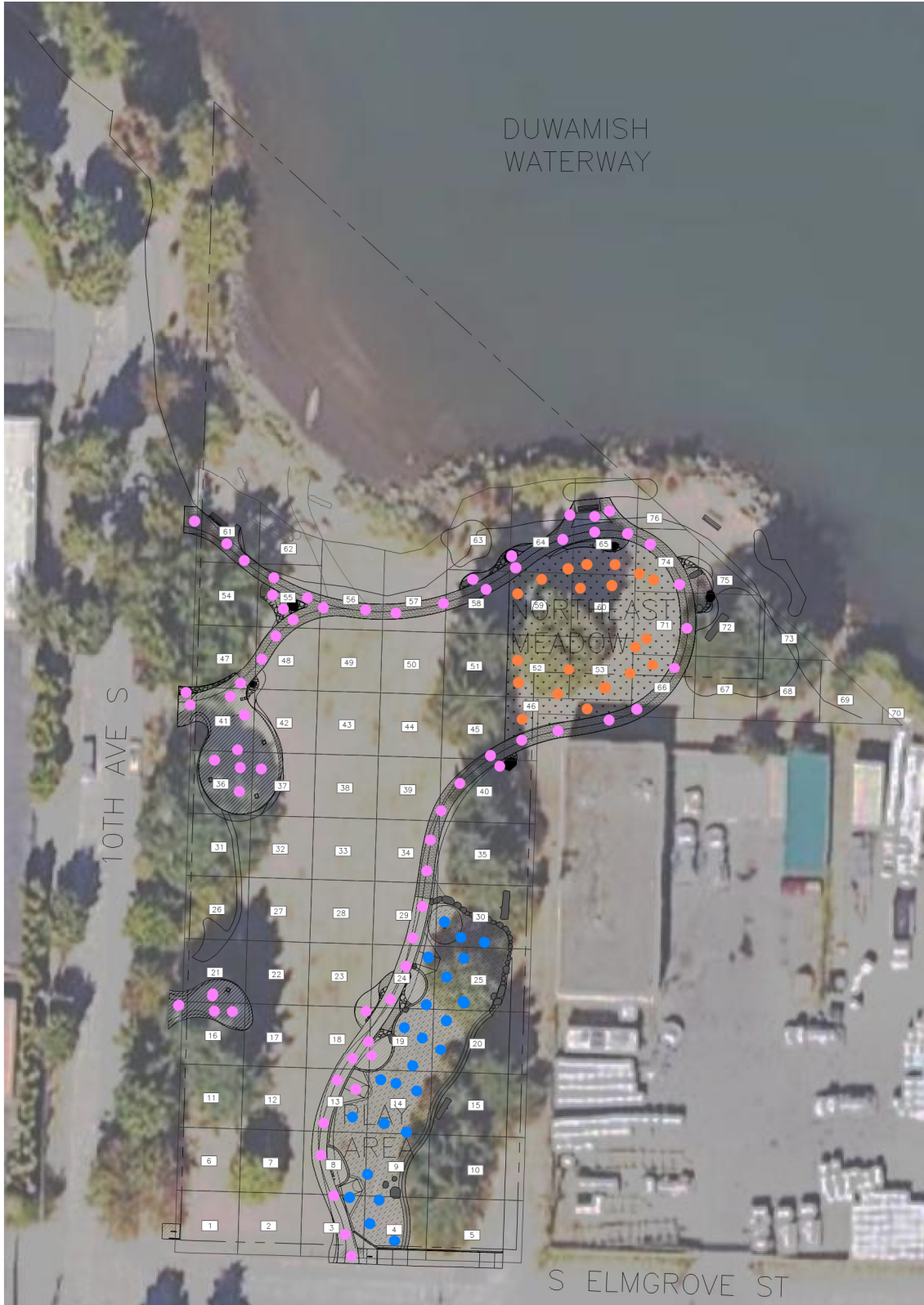


DUWAMISH WATERWAY PARK
 DUWAMISH WATERWAY
 PARK FIGURES
 SITE MAP

DESIGNED X	DATE X
DRAWN X	
CHECKED X	SHEET X OF X
ORDINANCE NO. X	FIGURE 1
SPECIFICATION NO. X	
SCALE 1"=80'	

- Notes:
1. All capped areas shown are concrete pads or paths, except for the play area and the northeast meadow. The play area is gravel, geotextile, and engineered wood fiber. The play area is capped with geotextile and soil.
 2. Soil removal conducted during park renovations are not shown. These soil removal areas include drainage and irrigation trenches. Clean soil was placed in all trenches included in the park renovation.
 3. Additional figures (Figures 6A through 6D) detail the soil removal and capped areas in the Northeast Meadow.

Legend:
 Pink Dot - Concrete caps
 Orange Dot - Soil capping in northeast meadow
 Blue Dot - Play Area



NOTES

- ALL CAPS SHOWN ARE CONCRETE CAPS OR PADS, EXCEPT THE PLAY AREA, WHICH IS GRAVEL AND ENGINEERED WOOD FIBER.
- SEE ADDITIONAL FIGURES FOR SOIL CAP DEPTHS.

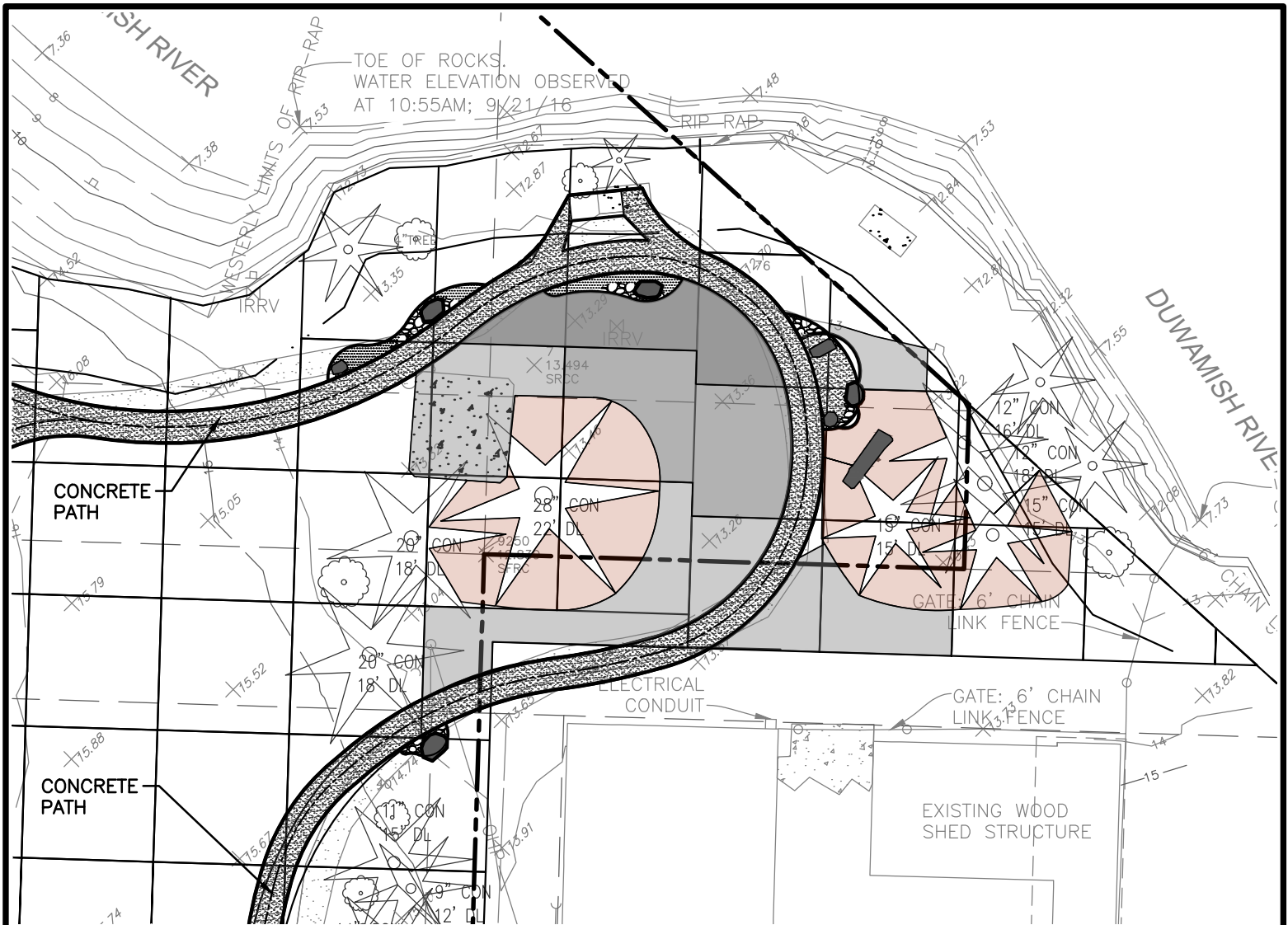


REVIEWED: _____
 PARK ENGINEER _____ DATE _____
All work done in accordance with the City of Seattle Standard Plans and Specifications in effect on the date shown above, and supplemented by Special Provisions.




DUWAMISH WATERWAY PARK
DUWAMISH WATERWAY
PARK FIGURES
 CAPPED AREAS


DESIGNED <input checked="" type="checkbox"/>	DATE _____
DRAWN <input checked="" type="checkbox"/>	
CHECKED <input checked="" type="checkbox"/>	SHEET <u> </u> OF <u> </u>
ORDINANCE NO. <u> </u>	FIGURE 7
SPECIFICATION NO. <u> </u>	
SCALE 1"=60'	



NOTES



 =AIR KNIFE AROUND TREES 6 TO 8 INCHES OF SOIL REMOVED. BURLAP PLACED ON EXPOSED TREE ROOTS. CLEAN SOIL PLACED ON TOP.

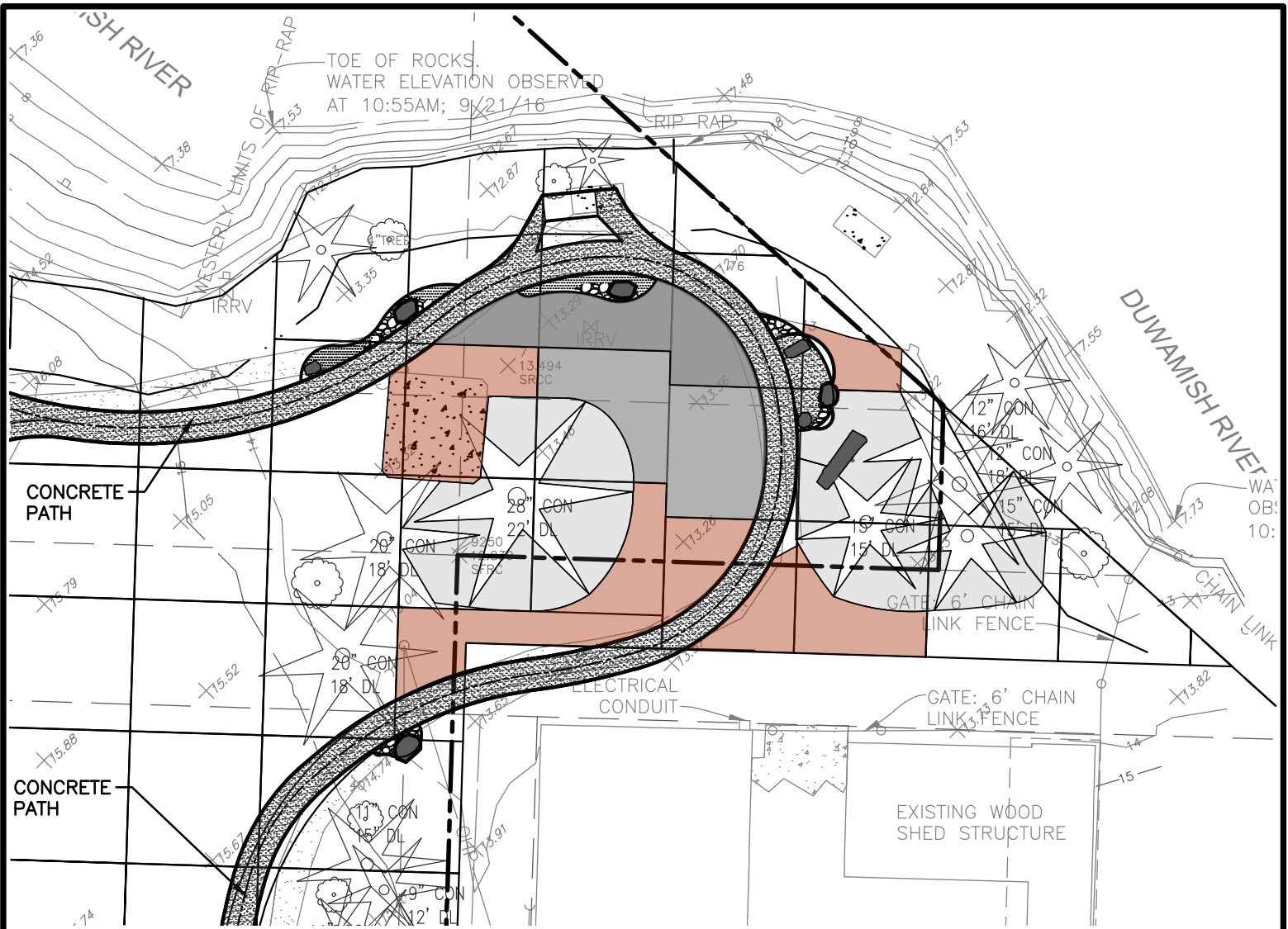
 =CONCRETE PATH

REVISION: _____ DATE _____
 PARK ENGINEER _____
All work done in accordance with the City of Seattle Standard Plans and Specifications to which all the data shown above, and requirements by Special Provisions.



DUWAMISH WATERWAY PARK
 DUWAMISH WATERWAY
 PARK FIGURES
 EXCAVATION AND CAP DEPTHS

DESIGNED <u>X</u>	DATE <u>X</u>
DRAWN <u>X</u>	
CHECKED <u>X</u>	
ORDINANCE NO. <u>X</u>	SHEET <u>X</u> OF <u>X</u>
SPECIFICATION NO. <u>X</u>	FIGURE 6A
SCALE <u>1"=60'</u>	

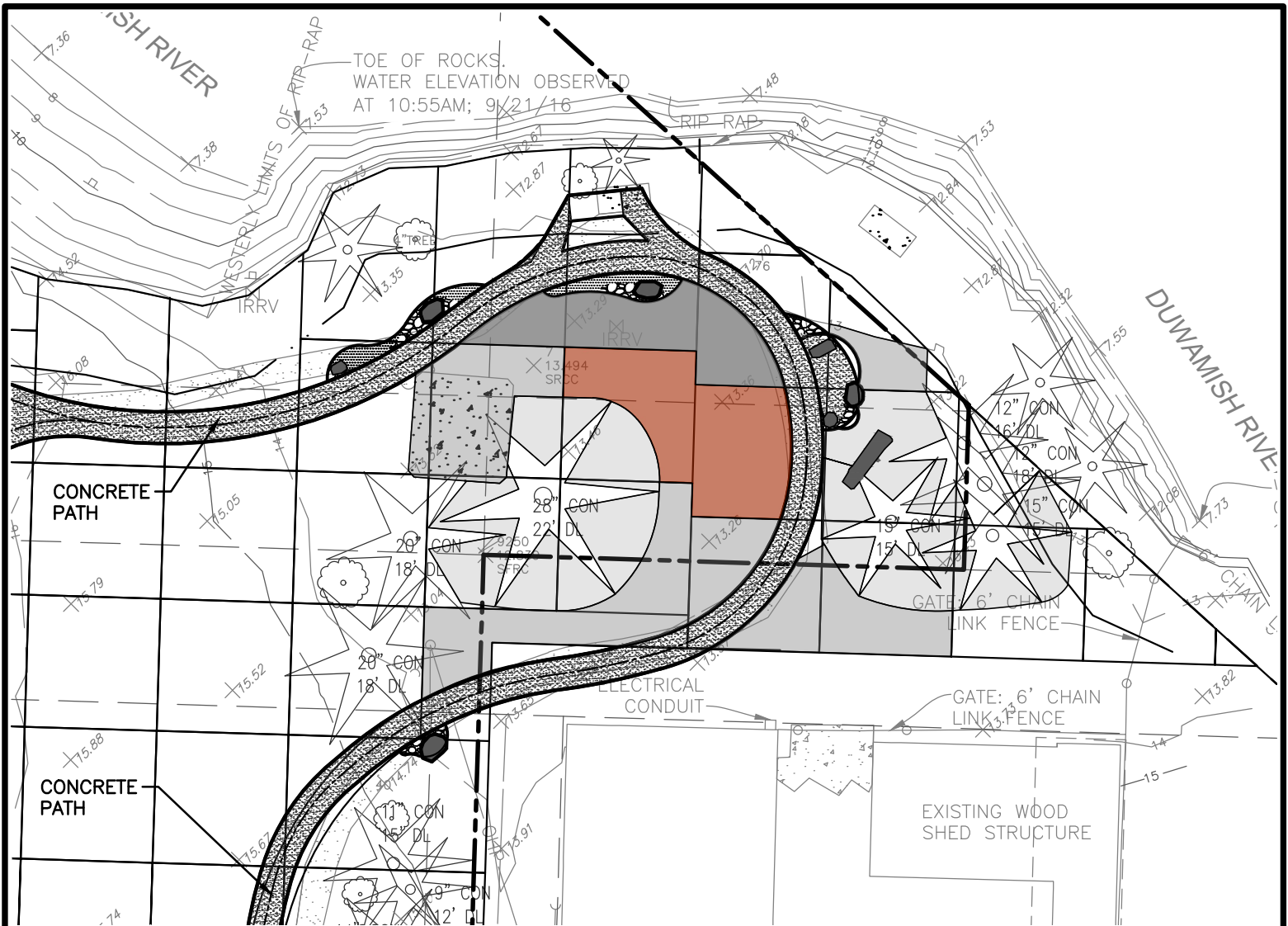


NOTES




- =12 INCHES OF SOIL REMOVED. CLEAN SOIL PLACED ON TOP.
- =CONCRETE PATH


<p>REVIEWED: _____ DATE _____</p> <p><small>All work done in accordance with the City of Seattle Standard Plans and Specifications to which no date shall be shown, and approved by Special Provisions.</small></p>		<p>DUWAMISH WATERWAY PARK</p> <p>DUWAMISH WATERWAY PARK FIGURES</p> <p>EXCAVATION AND CAP DEPTHS</p>	<table border="1" style="width: 100%; border-collapse: collapse;"> <tr> <td>DESIGNED: X</td> <td>DATE: X</td> </tr> <tr> <td>DRAWN: X</td> <td></td> </tr> <tr> <td>CHECKED: X</td> <td></td> </tr> <tr> <td>ORDINANCE NO.: X</td> <td>SHEET X OF X</td> </tr> <tr> <td>SPECIFICATION NO.: X</td> <td>FIGURE 6B</td> </tr> <tr> <td>SCALE: 1"=60'</td> <td></td> </tr> </table>	DESIGNED: X	DATE: X	DRAWN: X		CHECKED: X		ORDINANCE NO.: X	SHEET X OF X	SPECIFICATION NO.: X	FIGURE 6B	SCALE: 1"=60'	
DESIGNED: X	DATE: X														
DRAWN: X															
CHECKED: X															
ORDINANCE NO.: X	SHEET X OF X														
SPECIFICATION NO.: X	FIGURE 6B														
SCALE: 1"=60'															



NOTES



 =18 INCHES OF SOIL REMOVED. GEOTEXTILE LAYER PLACED. TYPE 17 FILL PLACED. TOP SOIL PLACED ON TOP.

 =CONCRETE PATH

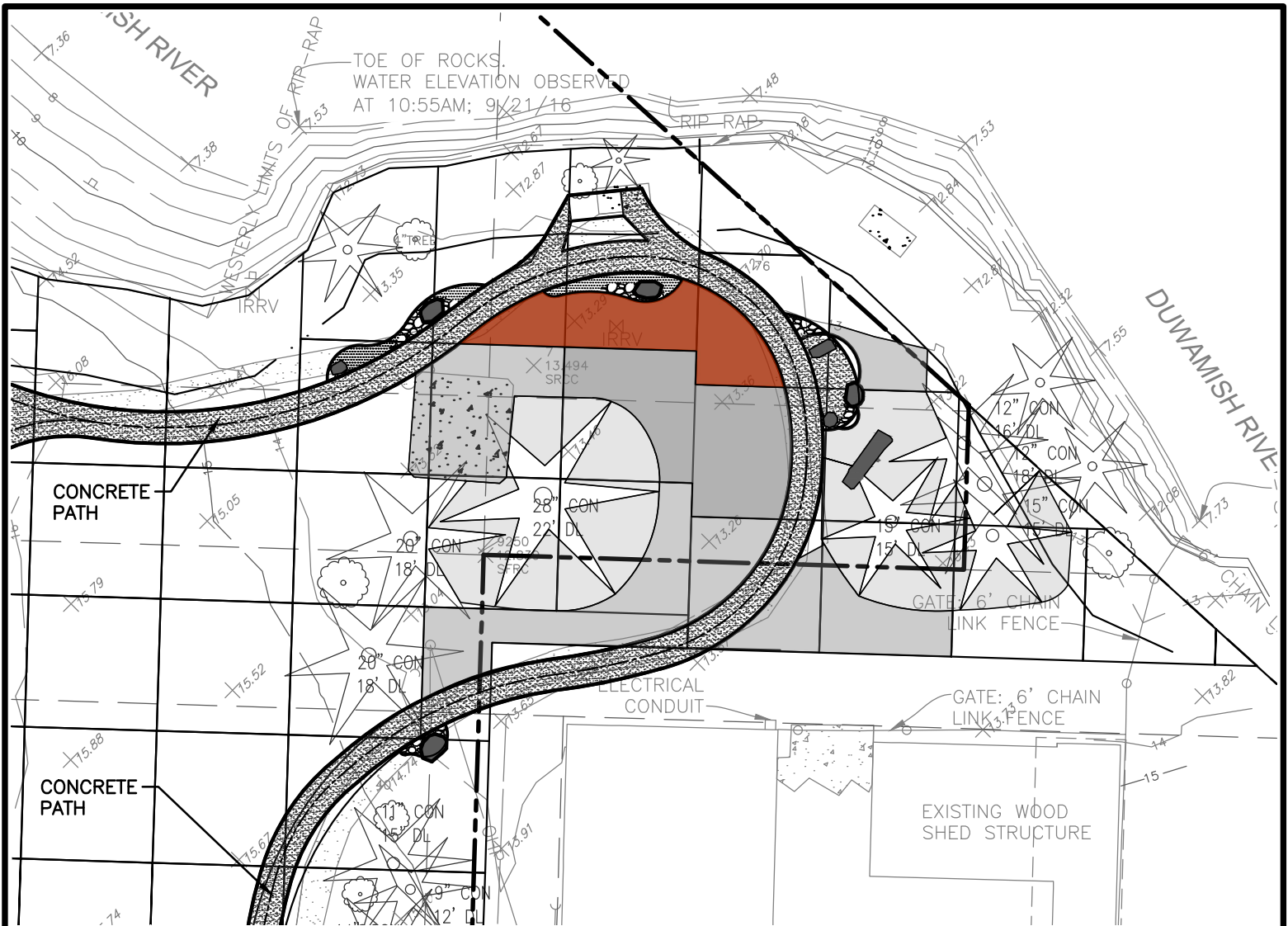
REVIEWED: _____ DATE _____
 PARK ENGINEER

All work done in accordance with the City of Seattle Standard Plans and Specifications to which all the data shown above, and requirements by Special Provisions.



DUWAMISH WATERWAY PARK
 DUWAMISH WATERWAY
 PARK FIGURES
 EXCAVATION AND CAP DEPTHS

DESIGNED: X	DATE: X
DRAWN: X	
CHECKED: X	SHEET X OF X
ORDINANCE NO. X	FIGURE 6C
SPECIFICATION NO. X	
SCALE: 1"=60'	



NOTES



- =24 INCHES OF SOIL REMOVED. GEOTEXTILE LAYER PLACED ON TOP. TYPE 17 FILL PLACED. TOP SOIL PLACED.
- =CONCRETE PATH

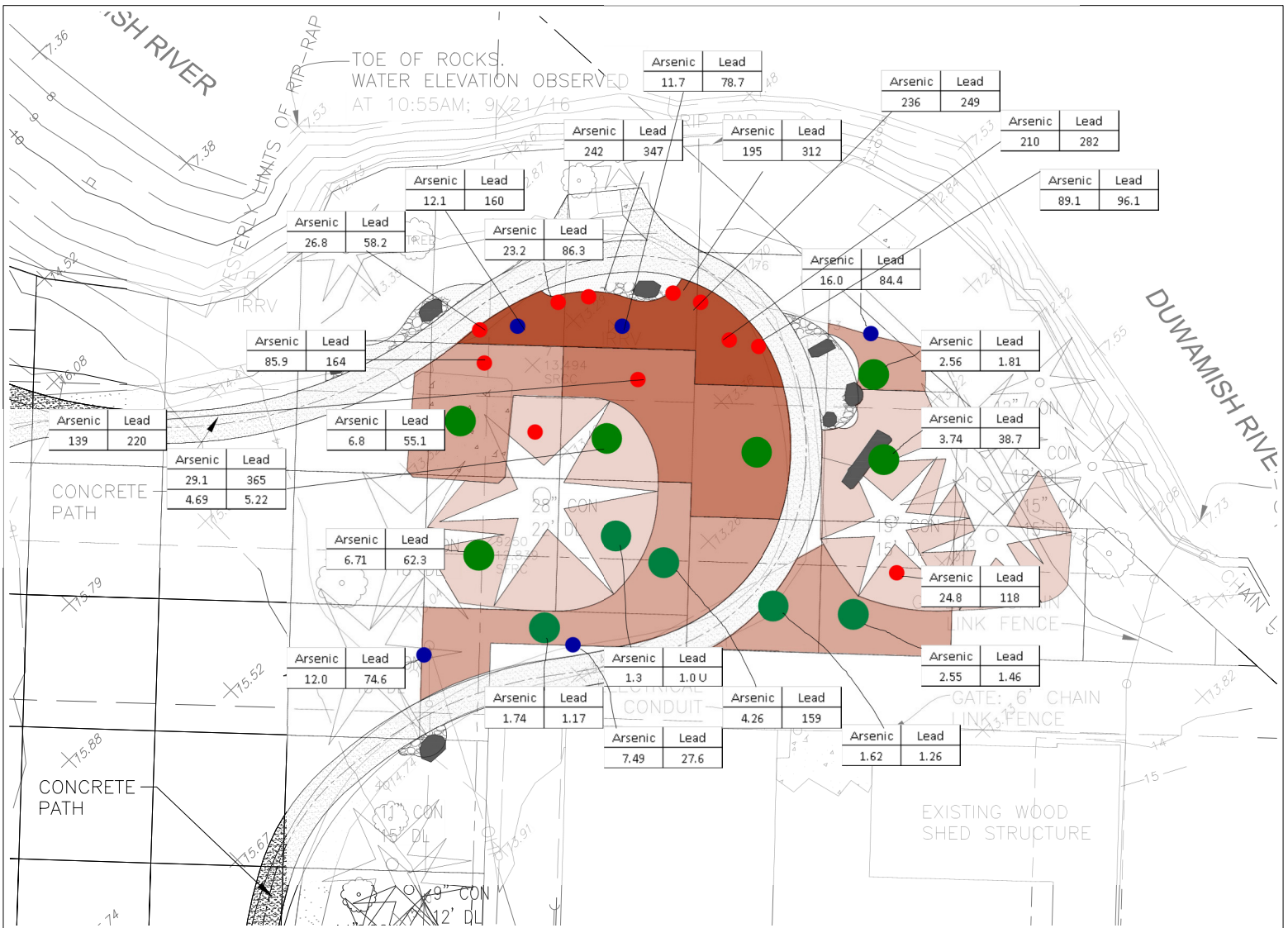
REVIEWED: _____ DATE _____
 PARK ENGINEER

All work done in accordance with the City of Seattle Standard Plans and Specifications to which all the data shown above, and requirements by Special Provisions.



DUWAMISH WATERWAY PARK
 DUWAMISH WATERWAY
 PARK FIGURES
 EXCAVATION AND CAP DEPTHS

DESIGNED: X	DATE: X
DRAWN: X	
CHECKED: X	SHEET X OF X
ORDINANCE NO. X	FIGURE 6D
SPECIFICATION NO. X	
SCALE: 1"=60'	



NOTES



- =24 INCH EXCAVATION/CAP
- =18 INCH EXCAVATION/CAP
- =12 INCH EXCAVATION/CAP
- =AIR KNIFE AROUND TREES 6 TO 8 INCH
- =CONCRETE PATH

1. Confirmation samples collected after excavation and before clean soil and/or geotextile placed.
2. Concrete path and bench pads were placed after geotextile and clean soil placed in excavation area.
3. All concentrations in milligrams per kilogram (mg/kg).
4. All samples collected from 0 to 6 inches below the excavation, where two results are presented, the second line represents a sample collected from 6 to 12 inches below the excavation.

DRAFT

REVIEWED: _____ DATE _____
 PARK ENGINEER

All work done in accordance with the City of Seattle Standard Plans and Specifications in effect on the date shown above, and supplemented by Special Provisions.



DUWAMISH WATERWAY PARK
 DUWAMISH WATERWAY
 PARK FIGURES
 Confirmation Sample Results

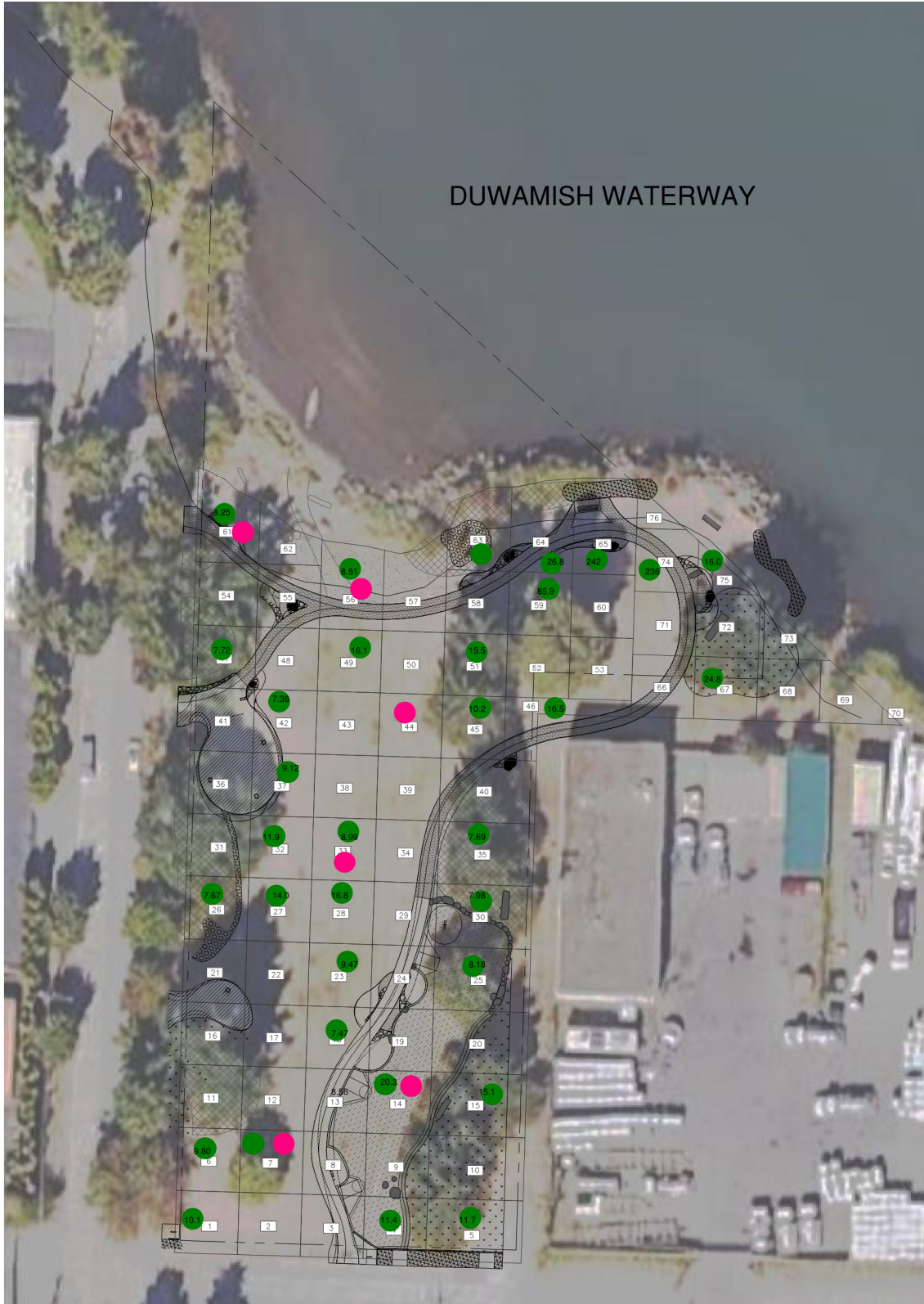
DESIGNED _____ DATE _____
 DRAWN _____
 CHECKED _____
 ORDINANCE NO. _____
 SPECIFICATION NO. _____
 SCALE 1"=60'

SHEET X OF 6
 FIGURE X

Notes:

1. Green dots represent locations where arsenic concentrations exceed 7.30 milligrams per kilogram (mg/kg).
2. Values inside the green dots are the arsenic concentration detected in mg/kg.
3. Where more than one sample was collected in each grid, the sample with the highest concentration is presented.
4. Sample depths are generally 0 to 6 inches below ground surface.
5. Pink dots represent locations where additional metals were sampled and exceeded screening levels. Additional metals with exceedances include: mercury and selenium.
6. Samples from pink dots collected from depths of up to 8 to 9 feet below ground surface.

DUWAMISH WATERWAY



DRAFT



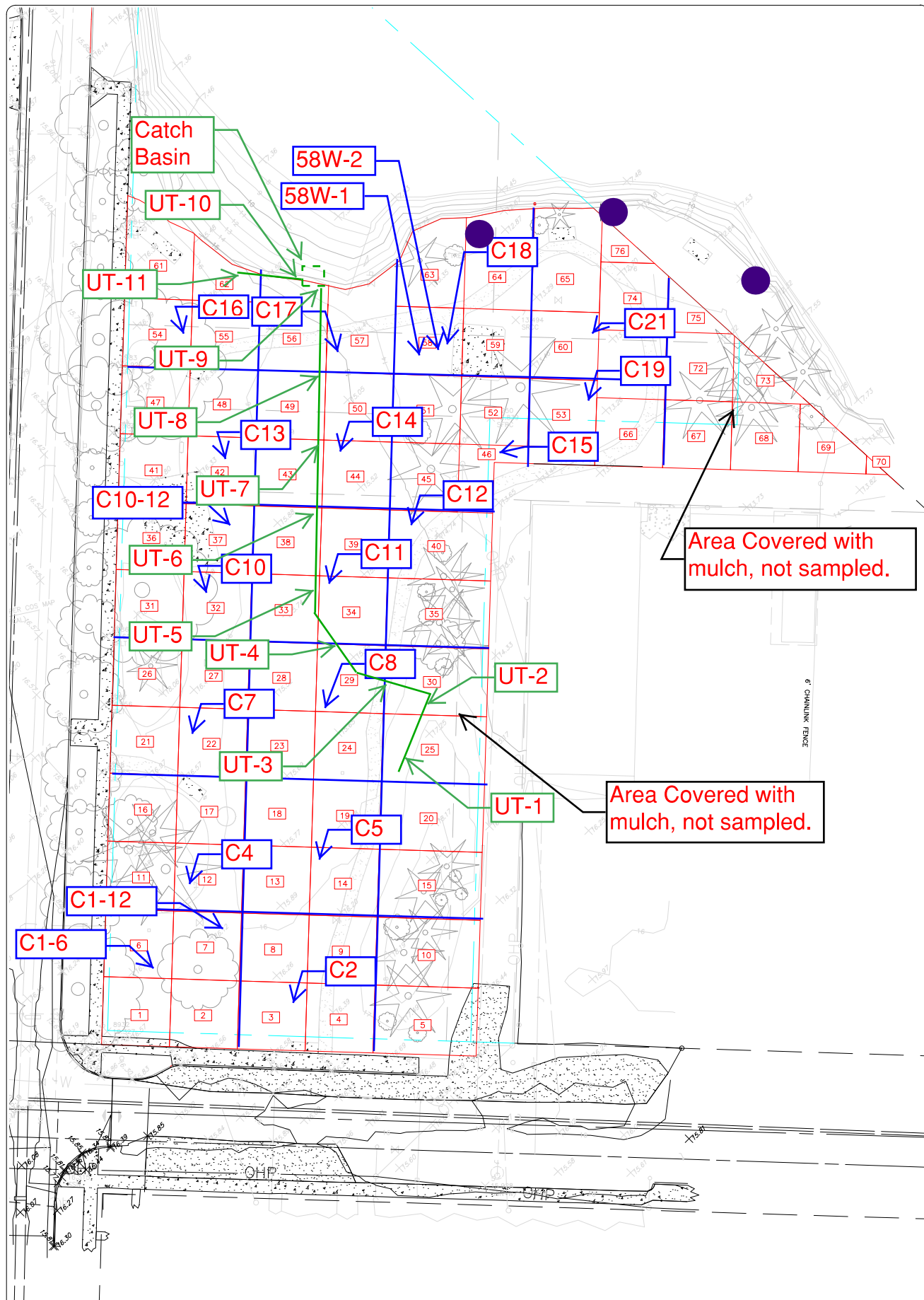
REVIEWED: _____
PARK ENGINEER DATE
All work done in accordance with the City of Seattle Standard Plans and Specifications in effect on the date shown above, and supplemented by Special Provisions.



DUWAMISH WATERWAY PARK
DUWAMISH WATERWAY PARK FIGURES
REMEDATION AREAS AND PLANNED PARK RENOVATIONS

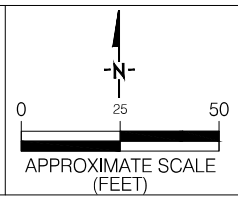
DESIGNED X
DRAWN X
CHECKED X
ORDINANCE NO. X
SPECIFICATION NO. X
SCALE 1"=60'

DATE X
SHEET X OF X
FIGURE 7



LEGEND

<ul style="list-style-type: none"> ○ OPEN WELL V-WATER-ETWC ● WATER METER V-WATER-MECL ○ WATER METER V-WATER-MET ○ IRRIGATION VALVE V-IRRIG-CPM ○ IRRIGATION CONTROLLER BOX V-IRRIG-CCB ○ WATER VALVE V-WATER-VNT ○ WATER METER V-WATER-MECL ○ GROUND WATER TYPE 1 V-GW-ETWC ○ GROUND WATER TYPE 2 V-GW-ETWC ○ NATURAL GAS METER V-NATGAS-MET 	<ul style="list-style-type: none"> ○ POWER POLE WITH STREET LIGHT V-POWER ○ BOLLARD V-BOLL ○ CONCRETE TIE V-PLANT-COH ○ DECIDUOUS TREE V-PLANT-DEC ○ SHRUB BENCHMARK V-CRUI-BENH ○ SURVEY MONUMENT IN GROUND V-CRUI ○ SURVEY MONUMENT V-CRUI ○ TROUSERS POLE FOR MAIL SPIN V-CRUI
---	---



Duwamish Waterway Park Utility & Confirmation Sampling Locations		
LOCATION: Duwamish Waterway Park 7900 10th Ave S, Seattle, WA 98108		
SOURCE	CITY OF SEATTLE	FIGURE:
DRAWN:	S.M.	A
REVISED:		
DATE	2.24.2021	

Table 1
Post Renovation Soil Sampling Results

Sample ID	Sample Date	Description	Depth (inches bgs)	Arsenic	Lead
PW-12	10/27/2020	West Landscape Area along Shoreline	0-12	5.95	45.7
PC-12		Central Landscape Area along Shoreline	0-12	7.61	48.4
PE-12		East Landscape Area along Shoreline	0-12	6.62	44
C1-6	8/20/2021	grid	0-6	9.80	24.7
C1-12		grid	6-12	8.19	28.8
C2		grid	0-6	7.02	19.9
C4		grid	0-6	6.22	23.8
C5		grid	0-6	5.46	19.1
C7		grid	0-6	5.63	18.1
C8		grid	0-6	6.22	18.0
C10		grid	0-6	5.44	17.5
C10-12		grid	6-12	9.87	21.0
C11		grid	0-6	5.88	21.2
C12		grid	0-6	5.45	17.9
C13		grid	0-6	5.59	20.2
C14		grid	0-6	6.31	25.2
C15		grid	0-6	16.5	140
C16		grid	0-6	6.40	21.7
C17	grid	0-6	5.75	19.4	
C18	grid	0-6	6.21	22.8	
C19	grid	0-6	5.59	20.0	
C21	grid	0-6	5.50	21.1	
UT-1	1/7/2021	Utility Trench	30-36	5.27	95.5
UT-2		Utility Trench	30-36	1.44	1.01
UT-3		Utility Trench	48-54	1.13	1.00 U
UT-4		Utility Trench	48-54	2.19	4.27
UT-5		Utility Trench	48-54	1.28	1.00 U
UT-6		Utility Trench	48-54	1.68	1.00 U
UT-7		Utility Trench	54-60	1.00 U	1.00 U
UT-8		Utility Trench	54-60	1.16	1.00 U
UT-9		Utility Trench	42-28	1.10	1.00 U
UT-10	1/29/2021	Utility Trench	54-60	1.53	1.13
UT-11		Utility Trench	54-60	1.44	1.05

Notes:

1. All concentrations presented in milligrams per kilogram (mg/kg)

Abbreviations

bgs = below ground surface

mg/kg = milligram per kilogram

U = not detected at given reporting limit