

September 29, 2021

Washington State Department of Ecology  
Attn: Ted Uecker  
1026 West Broadway Avenue  
Spokane, WA, 99260

**Re: Sundance Golf Course – Mercury Impacted Soil Removal Oversight Summary**

Dear Mr. Uecker,

Fulcrum Environmental Consulting, Inc. (Fulcrum) has been retained by the owner of the former Sundance Golf Course to assist in environmental characterization and remediation of the site as it transitions to a residential development. The site is located at 9725 North Nine Mile Road in Nine Mile Falls, Washington, and is 89 acres in size. Characterization sampling identified ten (10) putting greens with mercury contaminated soil. Fulcrum oversaw removal of the contaminated soil which continued until all confirmation samples were below the MTCA Method A Cleanup Level (Cleanup Level). This summary report has been prepared to provide an overview of the remedial action for Ecology review and consideration prior to the start of site grading. A full report for mercury soil characterization and remediation will be completed.

**Background**

In December 2020, April 2021, and July 2021, Fulcrum conducted soil characterization sampling throughout the subject site. A total of 108 soil samples were collected with a majority of the samples collected from the putting greens. The average concentration of the 108 samples was 0.96 ppm as compared to a Method A Cleanup Level of 2.0 ppm. A total of 11 samples (10%), all collected from putting greens, were found to have concentrations above Method A cleanup



*View of typical near-surface mercury characterization sample location completed throughout the subject site.*

levels. Mercury contaminated soil was identified to be restricted to the top 3-inches of soil for the majority of putting greens, with select putting greens identified to have mercury contaminated soil down to approximately 6-in to 12-in below ground surface (bgs).

A mercury soil characterization map is presented as Attachment 1 and a summary table documenting all mercury characterization soil samples is presented in Attachment 2. The identified locations of mercury contaminated soil are summarized as follows:

- Putting Green #2 – East central and central portions of putting green
- Putting Green #3 – Central portion of putting green
- Putting Green #4 – North central and east central portions of putting green
- Putting Green #5 – East central and central portions of putting green
- Putting Green #7 – North central and central portions of putting green
- Putting Green #8 – East central portion of putting green
- Putting Green #9 – North central and central portion of putting green
- Putting Green #10 – South central and southeast portion of putting green
- Putting Green #11 – Southeast and central portion of putting green
- Putting Green #17 – Southeast portion of putting green

The owner considered retaining the contaminated soil onsite, but in light of planned residential site use, opted for the more conservative approach of full removal of all mercury contaminated soil for offsite disposal.

### **Scope of Work**

Fulcrum was retained to oversee remediation of the locations of mercury contaminated soil. Fulcrum subcontracted Able Cleanup Technologies of Spokane, Washington, an experienced hazmat contractor, to provide excavation and transportation services. Graham Road Landfill was provided applicable waste characterization data and was selected as the disposal location.

Excavation activities were completed under the direction of, Travis Trent, a Washington State Licensed Geologist (LG); Certified Industrial Hygienist (CIH); and Certified Hazardous Materials Manager (CHMM) with 26-years of experience in environmental remediation. Scott Groat, a Washington-State recognized Geologist-in-Training, assisted with excavation oversight activities throughout the duration of the project while working under the direction of Travis Trent.

Fulcrum has worked in coordination with the Washington State Department of Ecology (Ecology) through the Voluntary Cleanup Program (VCP) to assist the developer in completing a site cleanup in accordance with applicable regulatory standards.

## Mercury Impacted Soil Removal Oversight

In April 2021, June 2021, and August 2021, Fulcrum oversaw remedial soil excavation and confirmatory sampling for the ten (10) putting greens with identified mercury concentrations above MTCA Method A Cleanup Levels. Work was conducted by an experienced hazmat contractor using 40-hr HAZWOPER trained workers. Fulcrum prepared a site-specific Health and Safety Plan for remediation of the site soils and reviewed the plan with the contractor prior to start of work. A water truck was present during soil excavation activities and used to suppress dust. Mercury impacted soil was wetted, placed directly into trucks, and then covered for transport to the landfill.



*View of typical remedial excavation conducted for the mercury impacted onsite putting greens.*

Work was completed in a manner to ensure that no dust, soil, or water associated with the mercury soil remediation traveled beyond site boundaries, other than through truck transport for disposal.

Due to the lack of field indicators associated with the mercury contaminated soil, each soil sample location where mercury had been identified was excavated approximately 20-feet in each direction, or to the edge of the green, and to an initial depth of approximately 18-inches in the center, grading up to 6-inches at the excavation extents. Each of the ten (10) initial excavation areas were then characterized by collection of a sample at the excavation boundary in each cardinal direction and two (2) pit bottom samples were collected for a total of six (6) samples per excavation area. When a confirmatory sample was identified above the cleanup level, the area around the sample was excavated an additional approximate 1-foot in depth and 10-feet in each direction.

After the completion of remedial excavations all soils samples were identified to be below the MTCA Method A Cleanup Level for mercury of 2 mg/Kg. A total of 100 remedial confirmation samples were collected to demonstrate removal of the mercury contaminated soil. The remedial action results in removal of a total of 349.14 tons of mercury contaminated soil.

A map for each remediated green is presented in Attachment 3 showing excavation extent and confirmation soil sample locations and results. A summary table summarizing confirmation samples results for each location of identified mercury contaminated soil is presented in Attachment 4. Copy of disposal receipts from Graham Road Landfill are presented in Attachment 5.

## Summary

All mercury soil contaminated soil above the MTCA Method A Cleanup level has been remediated through excavation and offsite disposal. The remedial action was completed under the direction of a Washington State Licensed Geologist and in accordance with Ecology Guidance and Industry Standard of Care. A full soil remediation report will be submitted for Ecology review under the VCP program along with a request for a No Further Action determination. This summary report is intended to provide Ecology an opportunity to review the essential elements of the mercury soil remediation prior to start of planned site grading.

Sincerely,



Travis Trent, LG, CIH  
Principal

Attachments





## LEGEND

- Negative mercury characterization soil sample
- Positive mercury characterization soil sample
- # Putting Green Number

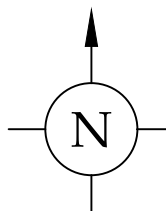
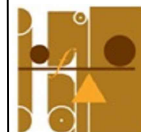


Figure 1: Soil Characterization Sample Locations for Mercury Contaminated Soil

9725 North Nine Mile Road  
Nine Mile Falls, Washington 99206



FULCRUM ENVIRONMENTAL CONSULTING, INC.  
207 W. BOONE AVENUE  
SPOKANE, WASHINGTON 99201  
(509) 459-9220 [www.efulcrum.net](http://www.efulcrum.net)

MAP BY: Ethan Ducken

DATE: September 21, 2021

PROJECT NUMBER: 192860.03

REVIEWED BY: T. Trent

Table 1: Sundance Golf Course - Mercury Characterization Soil Samples

Location	Sample Number & Area	Sample Depth (in)	12/03/20 Mercury Characterization Sampling	12/16/20 Mercury Characterization Sampling	04/22/21 Mercury Characterization Sampling	7/7/21 Mercury Characterization Sampling
Hole 1	SD-120320-01 (tee box)	3	0.04			
	SGC-121620-21, (northeast green)	3		0.04		
	SGC-121620-22, (south central green)	3		0.04		
	SGC-121620-23, (northwest green)	3		0.04		
	SGC-070721-PH-19 (south of green)	3				0.04
	SGC-070721-PH-22 (fairway low area)	3				0.04
Hole 2	SD-120320-02, (central green)	4	0.04			
	SGC-121620-24, (southeast green)	3		0.12		
	SGC-121620-25, (northwest green)	3		0.12		
	SGC-121620-25B, (north central green)	3		0.14		
	SGC-042221-PH-03, (central green)	3			2.6	
	SGC-070721-PH-30 (fairway low area)	3				0.04
Hole 3	SD-120320-03 (fairway)	3	0.04			
	SGC-121620-26, (south central green)	3		0.04		
	SGC-121620-27, (northwest green)	3		0.04		
	SGC-121620-28, (northeast green)	3		0.04		
	SGC-070721-PH-08, (central green)	3				16
Hole 4	SD-120320-04, (northwest area green)	6	5.2			
	SGC-121620-29, (west central green)	3		0.037		
	SGC-121620-30, (south central green)	3		0.04		
	SGC-121620-31, (east central green)	3		0.28		
	SGC-042221-PH-02 (central fairway)	3			0.04	
Hole 5	SD-120320-05, (north central green)	1.5	0.04			
	SGC-121620-32, (east central green)	3		2.6		
		6		4.5		
		12		1.7		
	SGC-121620-33, (west central green)	3		0.54		
	SGC-121620-34, (central green)	3		0.084		
Hole 6	SD-120320-06 (tee box)	3	0.04			
	SGC-121620-35, (east central green)	3		0.23		
	SGC-121620-36, (north central green)	3		1.8		
	SGC-121620-37, (west central green)	3		0.38		
	SGC-070721-PH-20, (east central green)	3				0.77
Hole 7	SD-120320-07 (central green)	3	6.9			
	SGC-121620-38, (northwest green)	3		0.11		
	SGC-121620-39, (north central green)	3		0.14		
	SGC-121620-40, (south central green)	3		0.098		
	SGC-070721-PH-07, (faiway low area)	3				0.04
Hole 8	SD-120320-08 (fariway)	3	0.04			
	SGC-121620-41, (east central green)	3		3.5		
		6		0.29		
	SGC-121620-42, (southwest green)	3		0.75		
	SGC-121620-43, (north central green)	3		0.23		
Hole 9	SGC-042221-PH-01, (southwest green)	3			0.31	
	SD-120320-09 (tee box)	3	0.04			
	SGC-121620-44, (east central green)	3		1.9		
	SGC-121620-45, (north central green)	3		21		
		6		0.12		
	SGC-121620-46, (southwest green)	3		0.26		
Hole 10	SGC-042221-PH-06 (low spot fairway)	3			0.04	
	SD-120320-10 (tee box)	3	0.04			
	SGC-121620-47, (north central green)	3		0.11		
	SGC-121620-48, (central green)	3		0.091		
	SGC-121620-49, (south central green)	3		0.16		
Hole 11	SGC-042221-PH-05, (southeast green)	3			4.1	
	SD-120320-11, (central green)	6	0.1			
	SGC-121620-50, (northwest green)	3		0.04		
	SGC-121620-51, (central green)	3		0.078		
	SGC-121620-52, (southeast green)	3		13		
		6		0.04		
	SGC-070721-PH-13, (lowspot NW of green)	3				0.04
	SGC-070721-PH-14, (lowspot east of green)	3				0.04
	SGC-070721-PH-15, (lowspot west of tee box)	3				0.04
	SGC-070721-PH-25, (fairway lowspot)	3				0.04
	SGC-070721-PH-26, (fairway lowspot )	3				0.04

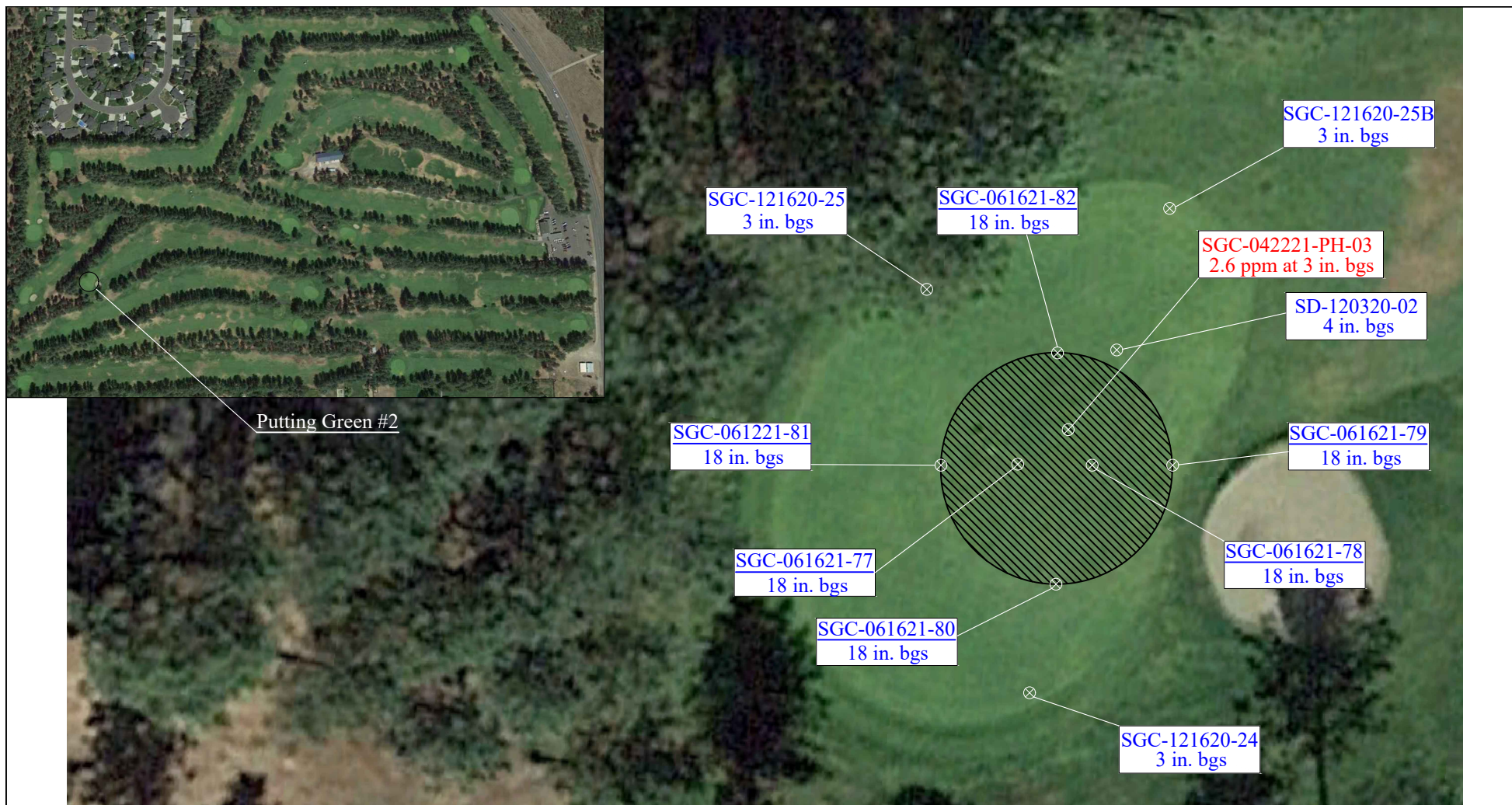
Location	Sample Number & Area	Sample Depth (in)	12/03/20 Mercury Characterization Sampling	12/16/20 Mercury Characterization Sampling	04/22/21 Mercury Characterization Sampling	7/7/21 Mercury Characterization Sampling
Hole 12	SD-120320-12 (tee box)	3	0.04			
	SGC-121620-53, (north central green)	3		0.2		
	SGC-121620-54, (central green)	3		0.04		
	SGC-121620-55, (south central green)	3		0.042		
	SGC-070721-PH-10, (putting green)	3				0.14
	SGC-070721-PH-11, (fairway lowspot)	3				0.04
	SGC-070721-PH-12, (fairway lowspot )	3				0.04
	SGC-070721-PH-27, (fairway lowspot)	3				0.04
	SGC-070721-PH-28, (fairway low spot )	3				0.04
Hole 13	SD-120320-13, (central green)	3	0.04			
	SGC-121620-56, (south central green)	3		0.04		
	SGC-121620-57, (northwest green)	3		0.054		
	SGC-121620-58, (northeast green)	3		0.066		
	SGC-070721-PH-09, (fairway low spot )	3				0.04
Hole 14	SD-120320-14 (fairway)	3	0.04			
	SGC-121620-59, (southeast green)	3		0.058		
	SGC-121620-60, (central green)	3		0.24		
	SGC-121620-61, (northwest green)	3		0.066		
	SGC-070721-PH-18, (south central green)	3				0.45
	SGC-070721-PH-29 (central fairway)	3				0.04
Hole 15	SD-120320-15, (central green)	3	0.04			
	SGC-121620-62, (east central green)	3		0.32		
	SGC-121620-63, (northwest green)	3		0.04		
	SGC-121620-64, (southwest green)	3		0.082		
	SGC-042221-PH-04, (east fairway)	3			0.04	
Hole 16	SD-120320-16 (tee box)	3	0.04			
	SGC-121620-65, (north central green)	3		0.2		
	SGC-121620-66, (west central green)	3		0.04		
	SGC-121620-67, (south central green)	3		0.13		
Hole 17	SD-120320-17, (central green)	3	0.04			
	SGC-121620-68, (southeast green)	3		0.04		
	SGC-121620-69, (north central green)	3		0.04		
	SGC-121620-70, (southwest green)	3		0.097		
	SGC-070721-PH-16, (fairway low spot)	3				0.04
	SGC-070721-PH-17, (putting green)	3				6.2
	SGC-070721-PH-23, (fairway low spot)	3				0.04
	SGC-070721-PH-24, (fairway low spot)	3				0.04
Hole 18	SD-120320-18, (central green)	3	0.04			
	SGC-121620-71, (southeast green)	3		0.04		
	SGC-121620-72, (north central green)	3		0.19		
	SGC-121620-73, (southwest green)	3		0.79		
Driving Range	SD-120320-19	3	0.04			
Total Samples Analyzed			19	59	6	24
Average Concentration			0.68	0.98	1.19	1.01
MTCA Method A Cleanup Level for Mercury (mg/kg)			2			

**Bold** Laboratory analytical above MTCA Method A Cleanup levels of 2 mg/kg for mercury





Total Samples	108
Average of All Samples	0.9632
Total Samples Above Method A Cleanup	11
Percent of samples above Method A	10%

Note: Soil samples were characterized for mercury disposal via TCLP analysis for comparision to the applicable waste criteria of 0.2 ppm  
TCLP analysis was conducted for a composite of the 54 soil samples collected on 12/16/21 with non-detect results  
TCLP analysis was also conducted for a composite of the six samples with mercury above cleanup with results at 0.0003 ppm  
Speciation analysis was non-detect for hexavalent Chromium





## LEGEND

-  Mercury impacted soil removal 1.5 ft bgs
-  Negative mercury characterization soil sample
-  Negative mercury confirmatory soil sample
-  Positive mercury characterization soil sample
- ppm Parts per million

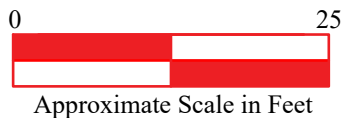
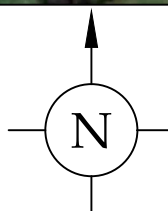


Figure 2: Putting Green #2 - Remedial Excavation and Characterization/Confirmatory Soil Sample Locations for Mercury Contaminated Soil

9725 North Nine Mile Road  
Nine Mile Falls, Washington 99206



FULCRUM ENVIRONMENTAL CONSULTING, INC.  
207 W. BOONE AVENUE  
SPOKANE, WASHINGTON 99201  
(509) 459-9220 www.efulcrum.net

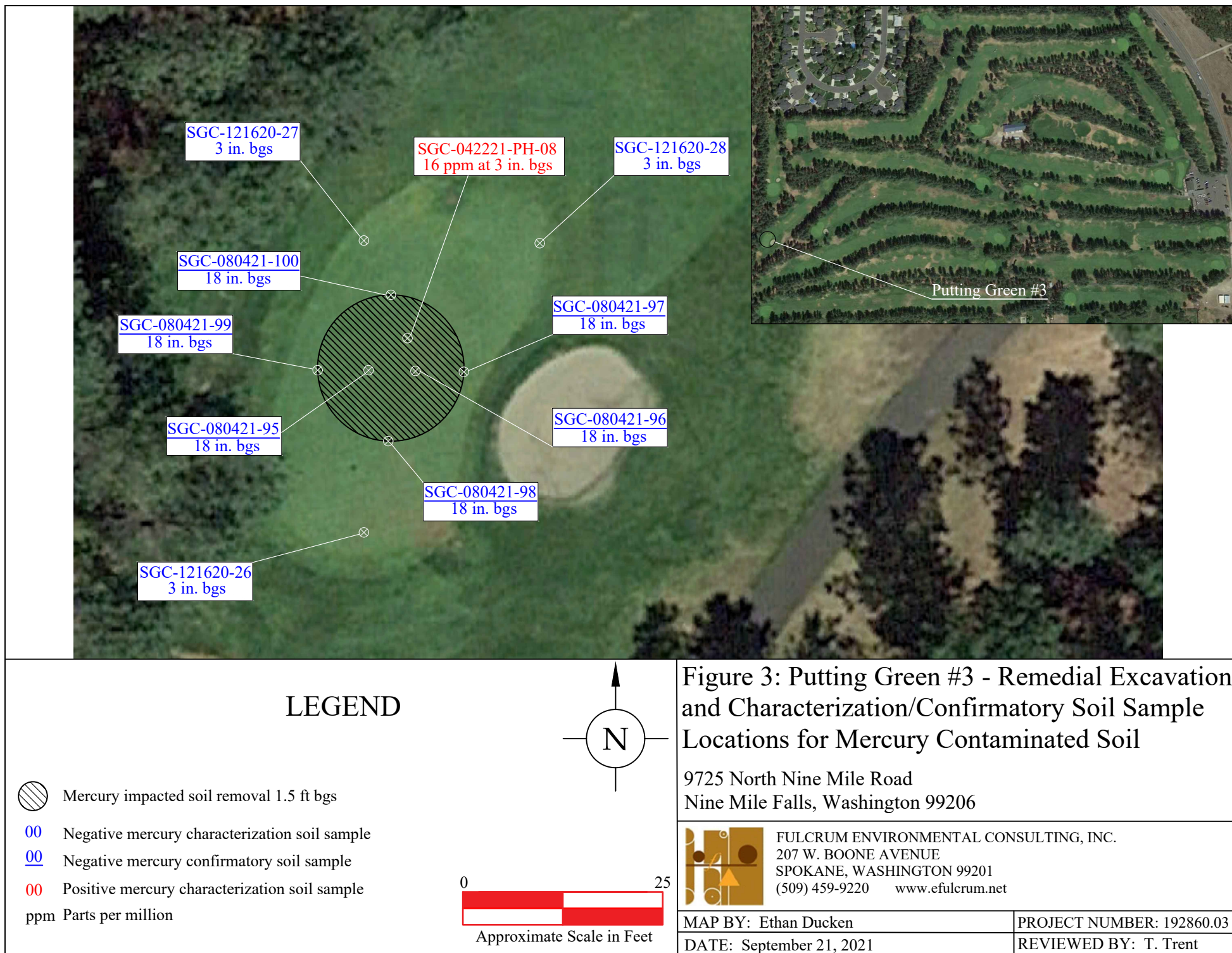
MAP BY: Ethan Ducken

DATE: September 21, 2021

PROJECT NUMBER: 192860.03

REVIEWED BY: T. Trent



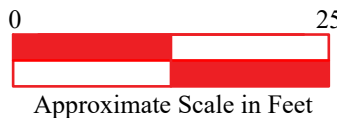
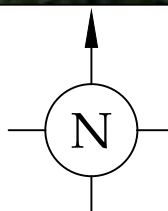






## LEGEND

- Initial mercury impacted soil removal area 0.5 ft bgs
  - Additional mercury impacted soil removal 1.5 ft bgs
  - Negative mercury characterization soil sample
  - 1st negative mercury confirmatory soil sample
  - 2nd negative mercury confirmatory soil sample
  - Positive mercury characterization soil sample
  - Positive mercury confirmatory soil sample
- ppm Parts per million



**Figure 4: Putting Green #4 - Remedial Excavation and Characterization/Confirmatory Soil Sample Locations for Mercury Contaminated Soil**

9725 North Nine Mile Road  
Nine Mile Falls, Washington 99206



FULCRUM ENVIRONMENTAL CONSULTING, INC.  
207 W. BOONE AVENUE  
SPOKANE, WASHINGTON 99201  
(509) 459-9220 [www.efulcrum.net](http://www.efulcrum.net)

MAP BY: Ethan Ducken

DATE: September 21, 2021

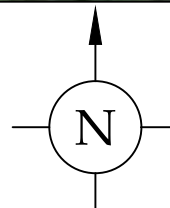
PROJECT NUMBER: 192860.03

REVIEWED BY: T. Trent



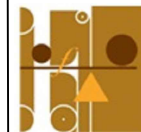
## LEGEND

- Initial mercury impacted soil removal area 0.5 ft bgs
  - Additional mercury impacted soil removal 1.5 ft bgs
  - 00 Negative mercury characterization soil sample
  - 00 1st negative mercury confirmatory soil sample
  - 00 2nd negative mercury confirmatory soil sample
  - 00 Positive mercury characterization soil sample
  - 00 Positive mercury confirmatory soil sample
- ppm Parts per million



**Figure 5: Putting Green #5 - Remedial Excavation and Characterization/Confirmatory Soil Sample Locations for Mercury Contaminated Soil**

9725 North Nine Mile Road  
Nine Mile Falls, Washington 99206



FULCRUM ENVIRONMENTAL CONSULTING, INC.  
207 W. BOONE AVENUE  
SPOKANE, WASHINGTON 99201  
(509) 459-9220 www.efulcrum.net

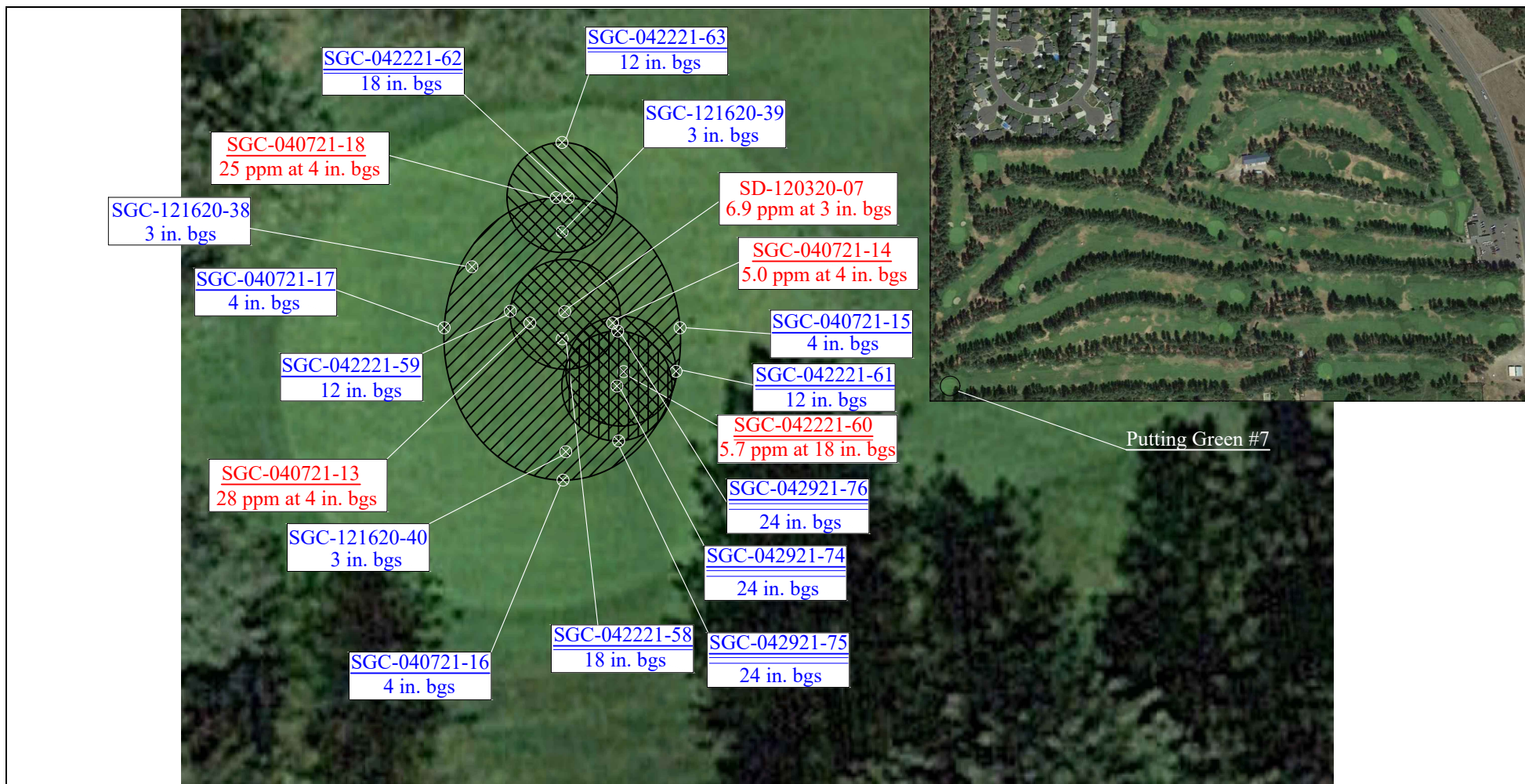
MAP BY: Ethan Ducken

DATE: September 21, 2021

PROJECT NUMBER: 192860.03

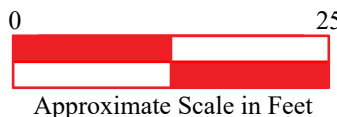
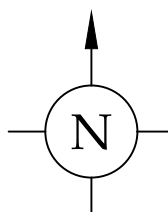
REVIEWED BY: T. Trent





## LEGEND

- Initial mercury impacted soil removal area 0.5 ft bgs
- Additional mercury impacted soil removal 1.5 ft bgs
- Additional mercury impacted soil removal 2 ft bgs
- Negative mercury characterization soil sample
- 1st negative mercury confirmatory soil sample
- 2nd negative mercury confirmatory soil sample
- 3rd negative mercury confirmatory soil sample
- Positive mercury characterization soil sample
- Positive mercury confirmatory soil sample
- 2nd positive mercury confirmatory soil sample
- ppm Parts per million



**Figure 6: Putting Green #7 - Remedial Excavation and Characterization/Confirmatory Soil Sample Locations for Mercury Contaminated Soil**

9725 North Nine Mile Road  
Nine Mile Falls, Washington 99206



FULCRUM ENVIRONMENTAL CONSULTING, INC.  
207 W. BOONE AVENUE  
SPOKANE, WASHINGTON 99201  
(509) 459-9220 [www.efulcrum.net](http://www.efulcrum.net)

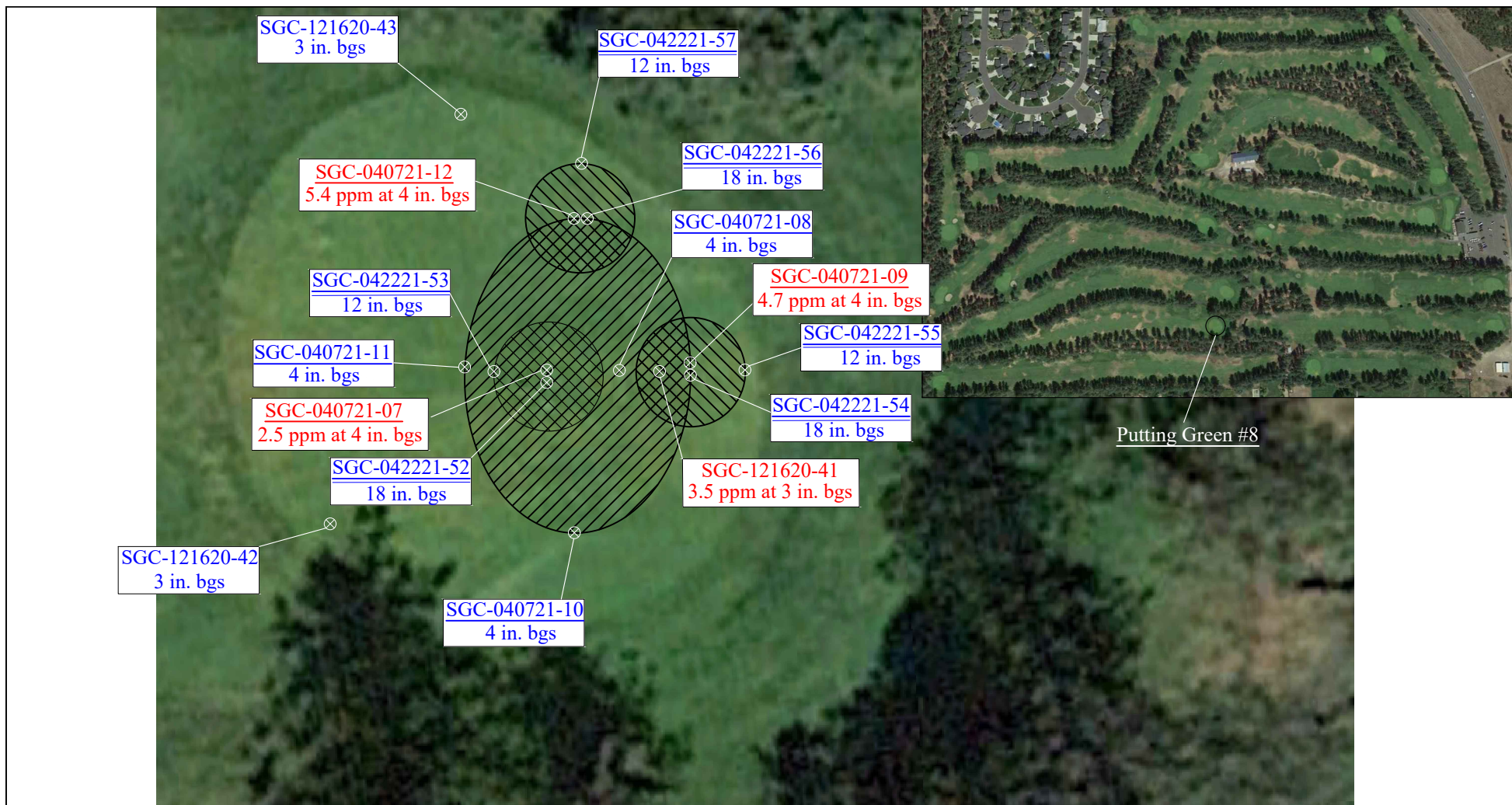
MAP BY: Ethan Ducken

DATE: September 21, 2021



PROJECT NUMBER: 192860.03

REVIEWED BY: T. Trent





## LEGEND

-  Initial mercury impacted soil removal area 0.5 ft bgs
  -  Additional mercury impacted soil removal 1.5 ft bgs
  - 00 Negative mercury characterization soil sample
  - 00 1st negative mercury confirmatory soil sample
  - 00 2nd negative mercury confirmatory soil sample
  - 00 Positive mercury characterization soil sample
  - 00 Positive mercury confirmatory soil sample
- ppm Parts per million

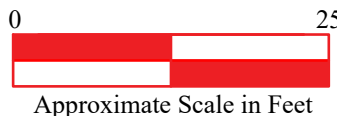
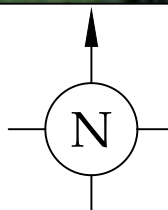


Figure 7: Putting Green #8 - Remedial Excavation and Characterization/Confirmatory Soil Sample Locations for Mercury Contaminated Soil

9725 North Nine Mile Road  
Nine Mile Falls, Washington 99206



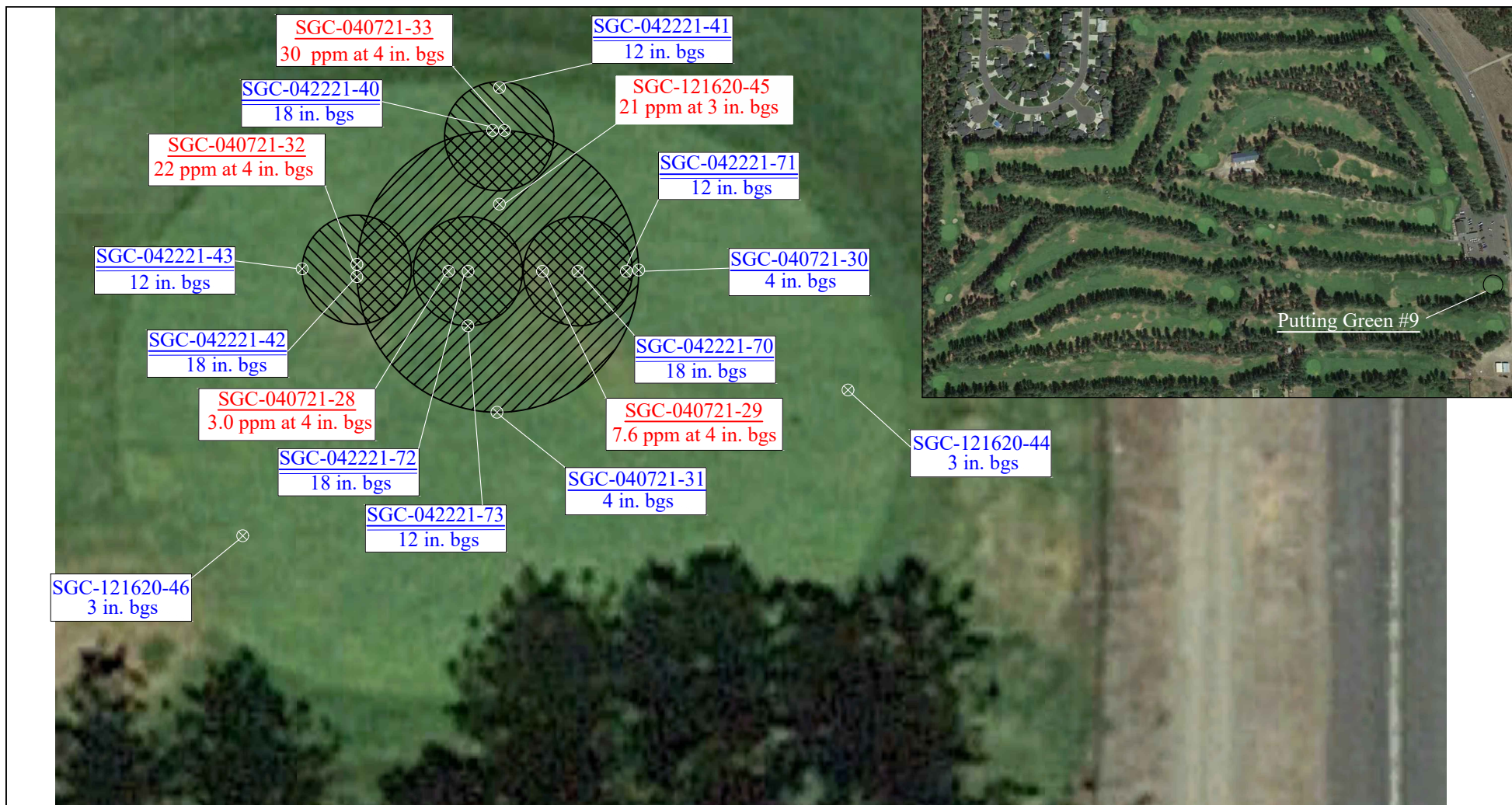
FULCRUM ENVIRONMENTAL CONSULTING, INC.  
207 W. BOONE AVENUE  
SPOKANE, WASHINGTON 99201  
(509) 459-9220 www.efulcrum.net

MAP BY: Ethan Ducken

DATE: September 21, 2021

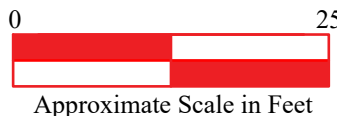
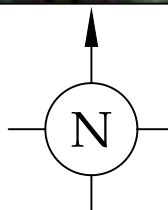
PROJECT NUMBER: 192860.03

REVIEWED BY: T. Trent



## LEGEND

- Initial mercury impacted soil removal area 0.5 ft bgs
  - Additional mercury impacted soil removal 1.5 ft bgs
  - 00 Negative mercury characterization soil sample
  - 00 1st negative mercury confirmatory soil sample
  - 00 2nd negative mercury confirmatory soil sample
  - 00 Positive mercury characterization soil sample
  - 00 Positive mercury confirmatory soil sample
- ppm Parts per million



## Figure 8: Putting Green #9 - Remedial Excavation and Characterization/Confirmatory Soil Sample Locations for Mercury Contaminated Soil

9725 North Nine Mile Road  
Nine Mile Falls, Washington 99206



FULCRUM ENVIRONMENTAL CONSULTING, INC.  
207 W. BOONE AVENUE  
SPOKANE, WASHINGTON 99201  
(509) 459-9220 [www.efulcrum.net](http://www.efulcrum.net)

MAP BY: Ethan Ducken

DATE: September 21, 2021

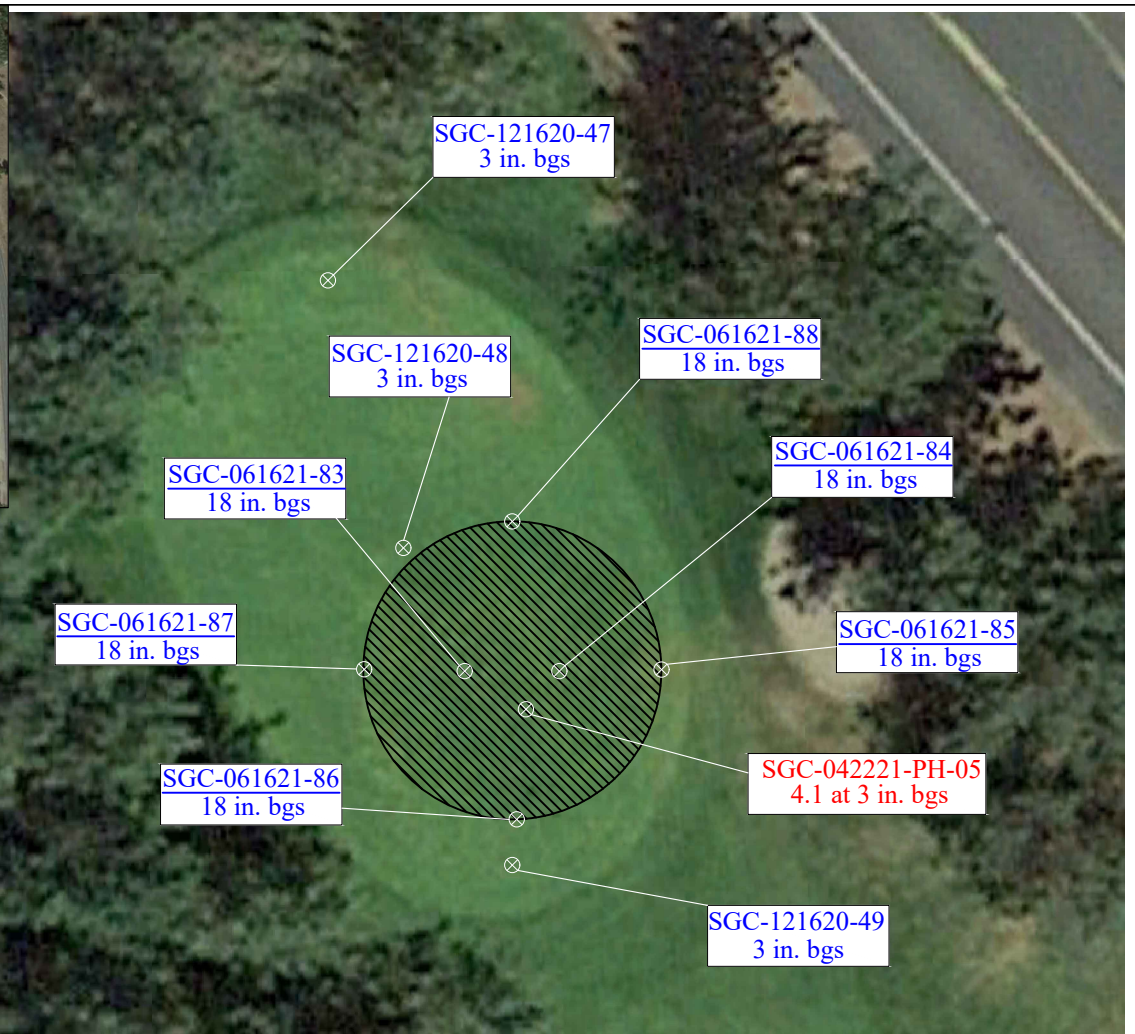
PROJECT NUMBER: 192860.03

REVIEWED BY: T. Trent.

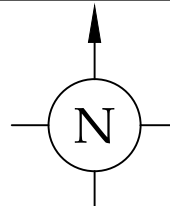




Putting Green #10



## LEGEND



Mercury impacted soil removal 1.5 ft bgs

00

Negative mercury characterization soil sample

00

Negative mercury confirmatory soil sample

00

Positive mercury characterization soil sample

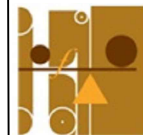
ppm Parts per million



Approximate Scale in Feet

Figure 9: Putting Green #10 - Remedial Excavation and Characterization/Confirmatory Soil Sample Locations for Mercury Contaminated Soil

9725 North Nine Mile Road  
Nine Mile Falls, Washington 99206



FULCRUM ENVIRONMENTAL CONSULTING, INC.  
207 W. BOONE AVENUE  
SPOKANE, WASHINGTON 99201  
(509) 459-9220 www.efulcrum.net

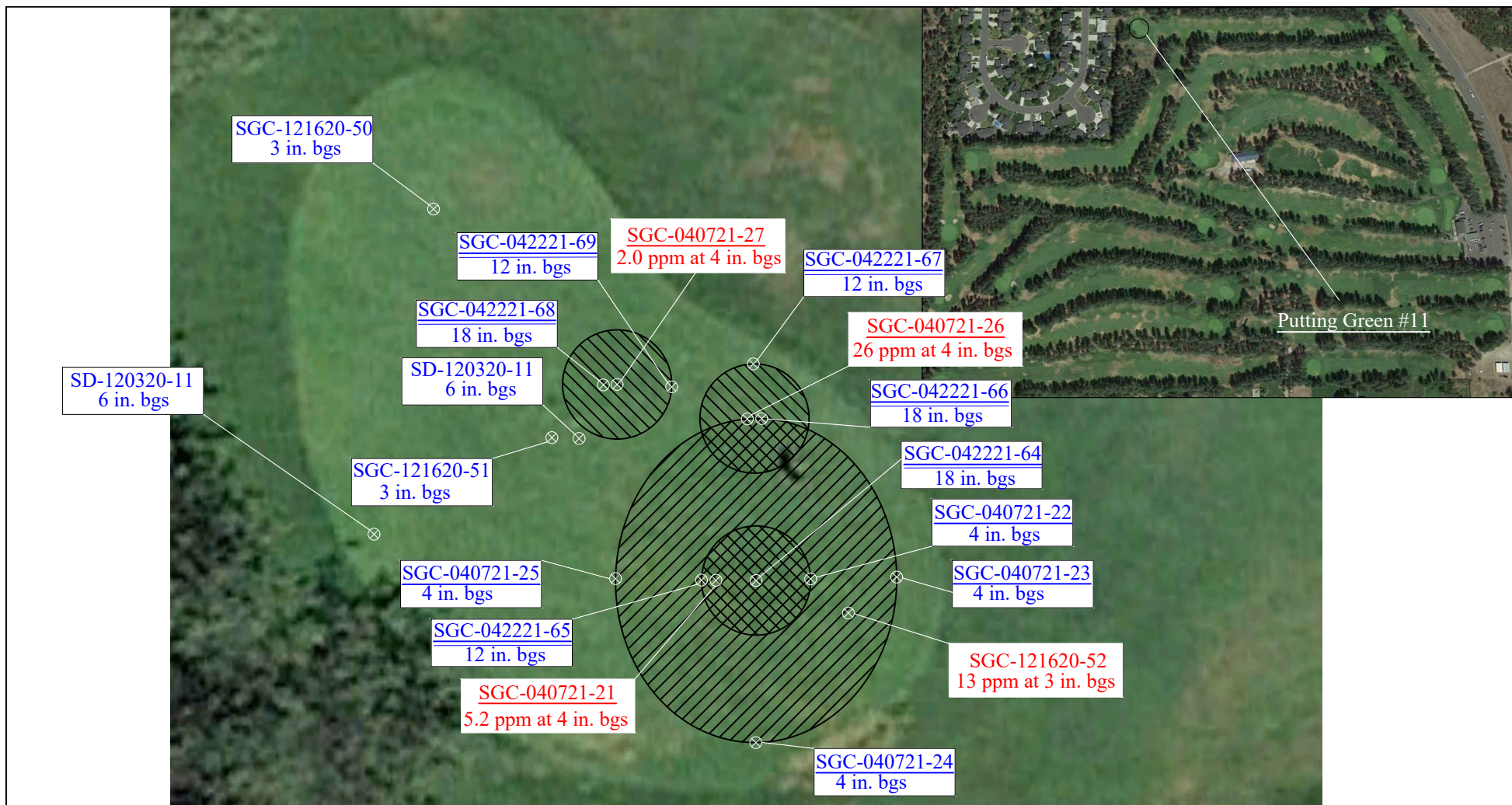
MAP BY: Ethan Ducken

DATE: September 21, 2021




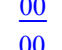
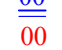

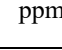
PROJECT NUMBER: 192860.03

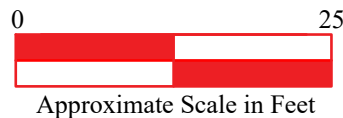
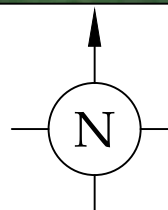
REVIEWED BY: T. Trent





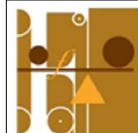
## LEGEND

-  Initial mercury impacted soil removal area 0.5 ft bgs
  -  Additional mercury impacted soil removal 1.5 ft bgs
  -  Negative mercury characterization soil sample
  -  1st negative mercury confirmatory soil sample
  -  2nd negative mercury confirmatory soil sample
  -  Positive mercury characterization soil sample
  -  Positive mercury confirmatory soil sample
- ppm Parts per million



**Figure 10: Putting Green #11 - Remedial Excavation and Characterization/Confirmatory Soil Sample Locations for Mercury Contaminated Soil**

9725 North Nine Mile Road  
Nine Mile Falls, Washington 99206



FULCRUM ENVIRONMENTAL CONSULTING, INC.  
207 W. BOONE AVENUE  
SPOKANE, WASHINGTON 99201  
(509) 459-9220 [www.efulcrum.net](http://www.efulcrum.net)

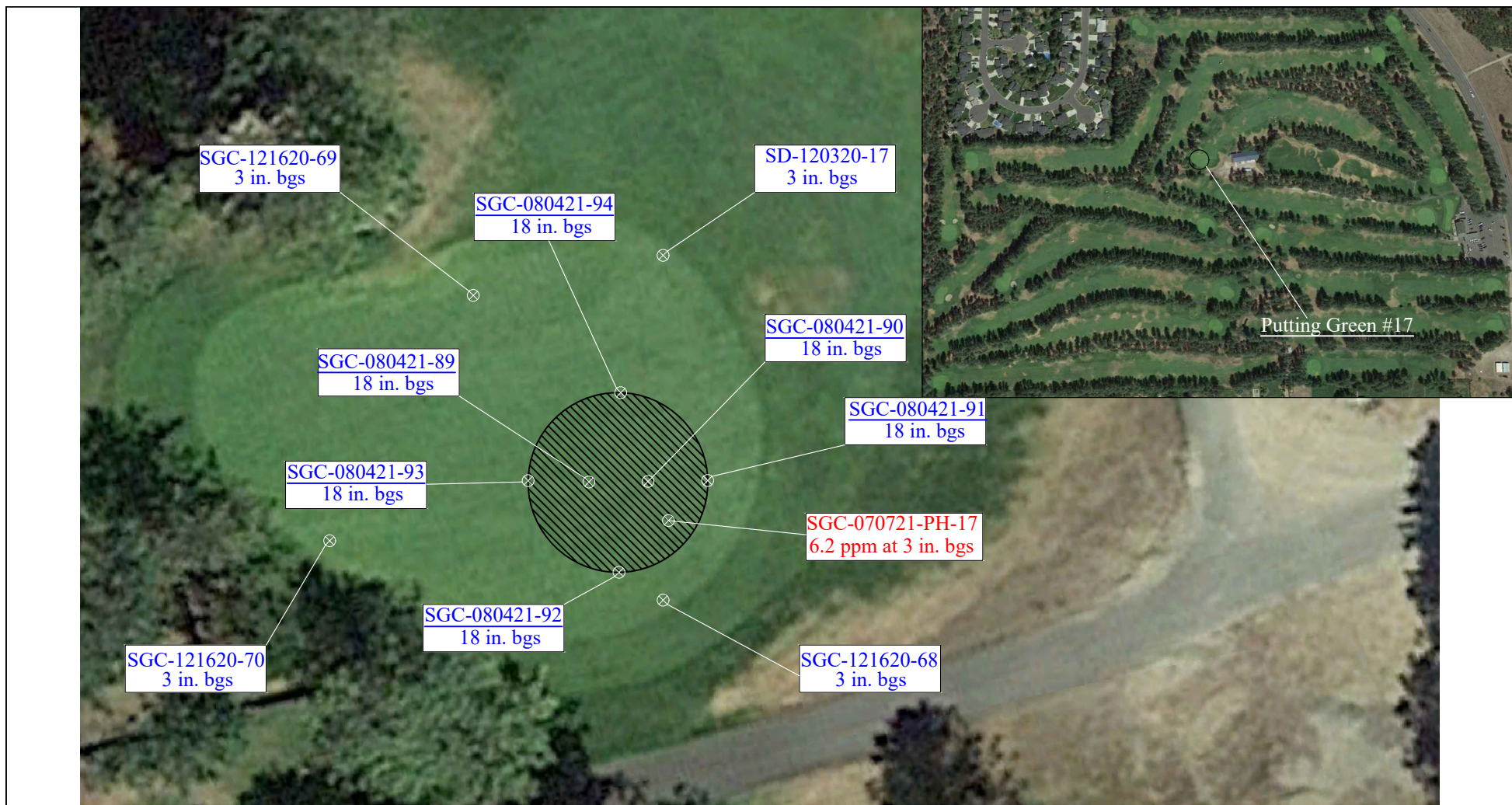
MAP BY: Ethan Ducken

DATE: September 21, 2021

PROJECT NUMBER: 192860.03

REVIEWED BY: T. Trent





## LEGEND



Mercury impacted soil removal 1.5 ft bgs

00

Negative mercury characterization soil sample

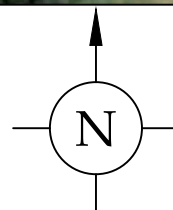
00

Negative mercury confirmatory soil sample

00

Positive mercury characterization soil sample

ppm Parts per million



Approximate Scale in Feet

## Figure 11: Putting Green #17 - Remedial Excavation and Characterization/Confirmatory Soil Sample Locations for Mercury Contaminated Soil

9725 North Nine Mile Road  
Nine Mile Falls, Washington 99206



FULCRUM ENVIRONMENTAL CONSULTING, INC.  
207 W. BOONE AVENUE  
SPOKANE, WASHINGTON 99201  
(509) 459-9220 [www.efulcrum.net](http://www.efulcrum.net)

MAP BY: Ethan Ducken

DATE: September 21, 2021

PROJECT NUMBER: 192860.03

REVIEWED BY: T. Trent

**Table 2: Sundance Golf Course - Confirmatory Sample Summary for Mercury Contaminated Soil**

Location	Sample Number and Area	Sample Depth (in)	4/07/2021 Mercury Confirmatory Sample	4/22/2021 Mercury Confirmatory Sample	4/29/2021 Mercury Confirmatory Sample	06/16/2021 Mercury Confirmatory Sample	08/04/2021 Mercury Confirmatory Sample
Hole 4	SGC-040721-01 (west central green)	6	0.24	-	-	-	-
	SGC-040721-02 (central green)	6	0.34	-	-	-	-
	SGC-040721-03 (east central green)	4	3	-	-	-	-
	SGC-040721-04 (south green)	4	0.86	-	-	-	-
	SGC-040721-05 (west green)	4	1.9	-	-	-	-
	SGC-040721-06 (north green)	4	2.5	-	-	-	-
Hole 8	SGC-040721-07 (central green)	4	2.5	-	-	-	-
	SGC-040721-08 (east central green)	4	0.49	-	-	-	-
	SGC-040721-09 (east green)	4	4.7	-	-	-	-
	SGC-040721-10 (southeast green)	4	0.4	-	-	-	-
	SGC-040721-11 (central green)	4	1.7	-	-	-	-
	SGC-040721-12 (north central green)	4	5.4	-	-	-	-
Hole 7	SGC-040721-13 (central green)	4	28	-	-	-	-
	SGC-040721-14 (central green)	4	5	-	-	-	-
	SGC-040721-15 (east central green)	4	1	-	-	-	-
	SGC-040721-16 (south central green)	4	0.23	-	-	-	-
	SGC-040721-17 (central green)	4	0.71	-	-	-	-
	SGC-040721-18 (north central green)	4	25	-	-	-	-
AST	SGC-040721-19	3	0.2	-	-	-	-
Chem Shed	SGC-040721-20	3	ND	-	-	-	-
Hole 11	SGC-040721-21 (south central green)	4	5.2	-	-	-	-
	SGC-040721-22 (southeast green)	4	0.32	-	-	-	-
	SGC-040721-23 (east green)	4	1.3	-	-	-	-
	SGC-040721-24 (south green)	4	0.083	-	-	-	-
	SGC-040721-25 (south central green)	4	0.047	-	-	-	-
	SGC-040721-26 (central green)	4	26	-	-	-	-
	SGC-040721-27 (north central green)	4	2	-	-	-	-
Hole 9	SGC-040721-28 (central green)	4	3	-	-	-	-
	SGC-040721-29 (central green)	4	7.6	-	-	-	-
	SGC-040721-30 (central green)	4	0.48	-	-	-	-
	SGC-040721-31 (central green)	4	0.066	-	-	-	-
	SGC-040721-32 (west central green)	4	22	-	-	-	-
	SGC-040721-33 (north central green)	4	30	-	-	-	-
Hole 5	SGC-040721-34 (east central green)	6	3	-	-	-	-
	SGC-040721-35 (east central green)	6	0.24	-	-	-	-
	SGC-040721-36 (east green)	4	0.87	-	-	-	-
	SGC-040721-37 (southeast green)	4	1.8	-	-	-	-
	SGC-040721-38 (central green)	4	7	-	-	-	-
	SGC-040721-39 (northeast green)	4	0.38	-	-	-	-
Hole 9	SGC-042221-40 (north green)	18	-	ND	-	-	-
	SGC-042221-41 (north green)	12	-	ND	-	-	-
	SGC-042221-42 (northwest green)	18	-	ND	-	-	-
	SGC-042221-43 (northwest green)	12	-	0.23	-	-	-
Hole 5	SGC-042221-44 (southeast green)	18	-	ND	-	-	-
	SGC-042221-45 (east central green)	12	-	ND	-	-	-
	SGC-042221-46 (central green)	18	-	0.033	-	-	-
	SGC-042221-47 (central green)	12	-	0.029	-	-	-
Hole 4	SGC-042221-48 (east central green)	18	-	0.054	-	-	-
	SGC-042221-49 (east central green)	12	-	0.024	-	-	-
	SGC-042221-50 (north central green)	18	-	ND	-	-	-
	SGC-042221-51 (north green)	12	-	ND	-	-	-
MTCA Method A Cleanup Level for Mercury in mg/Kg			2				

Location	Sample Number and Area	Sample Depth (in)	4/07/2021 Mercury Confirmatory Sample	4/22/2021 Mercury Confirmatory Sample	4/29/2021 Mercury Confirmatory Sample	06/16/2021 Mercury Confirmatory Sample	08/04/2021 Mercury Confirmatory Sample
Hole 8	SGC-042221-52 (central green)	18	-	0.091	-	-	-
	SGC-042221-53 (central green)	12	-	ND	-	-	-
	SGC-042221-54 (east central green)	18	-	ND	-	-	-
	SGC-042221-55 (east central green)	12	-	0.028	-	-	-
	SGC-042221-56 (northeast green)	18	-	ND	-	-	-
	SGC-042221-57 (northeast green)	12	-	ND	-	-	-
Hole 7	SGC-042221-58 (central green)	18	-	ND	-	-	-
	SGC-042221-59 (central green)	12	-	ND	-	-	-
	SGC-042221-60 (central green)	18	-	5.7	-	-	-
	SGC-042221-61 (east central green)	12	-	ND	-	-	-
	SGC-042221-62 (north central green)	18	-	ND	-	-	-
	SGC-042221-63 (north green)	12	-	0.028	-	-	-
Hole 11	SGC-042221-64 (southeast green)	18	-	ND	-	-	-
	SGC-042221-65 (southeast green)	12	-	ND	-	-	-
	SGC-042221-66 (east central green)	18	-	0.048	-	-	-
	SGC-042221-67 (east central green)	12	-	0.031	-	-	-
	SGC-042221-68 (central green)	18	-	ND	-	-	-
	SGC-042221-69 (central green)	12	-	0.18	-	-	-
Hole 9	SGC-042221-70 (east central green)	18	-	ND	-	-	-
	SGC-042221-71 (east central green)	12	-	0.035	-	-	-
	SGC-042221-72 (east central green)	18	-	0.033	-	-	-
	SGC-042221-73 (central green)	12	-	0.47	-	-	-
Hole 7	SGC-042921-74 (south central green)	24	-	-	ND	-	-
	SGC-042921-75 (south central green)	24	-	-	ND	-	-
	SGC-042921-76 (south central green)	24	-	-	ND	-	-
Hole 2	SGC-061621-77 (central green)	18	-	-	-	ND	-
	SGC-061621-78 (east central green)	18	-	-	-	ND	-
	SGC-061621-79 (east green)	18	-	-	-	0.035	-
	SGC-061621-80 (southeast green)	18	-	-	-	0.057	-
	SGC-061621-81 (central green)	18	-	-	-	0.53	-
	SGC-061621-82 (north central green)	18	-	-	-	ND	-
Hole 10	SGC-061621-83 (south central green)	18	-	-	-	ND	-
	SGC-061621-84 (southeast green)	18	-	-	-	ND	-
	SGC-061621-85 (southeast green)	18	-	-	-	0.2	-
	SGC-061621-86 (south green)	18	-	-	-	0.068	-
	SGC-061621-87 (west central green)	18	-	-	-	ND	-
	SGC-061621-88 (central green)	18	-	-	-	ND	-
Hole 17	SGC-080421-89 (southeast green)	18	-	-	-	-	0.095
	SGC-080421-90 (southeast green)	18	-	-	-	-	0.11
	SGC-080421-91 (southeast green)	18	-	-	-	-	ND
	SGC-080421-92 (south green)	18	-	-	-	-	ND
	SGC-080421-93 (central green)	18	-	-	-	-	ND
	SGC-080421-94 (east central green)	18	-	-	-	-	ND
Hole 3	SGC-080421-95 (central green)	18	-	-	-	-	ND
	SGC-080421-96 (central green)	18	-	-	-	-	ND
	SGC-080421-97 (east green)	18	-	-	-	-	ND
	SGC-080421-98 (south central green)	18	-	-	-	-	ND
	SGC-080421-99 (west green)	18	-	-	-	-	ND
	SGC-080421-100 (north central green)	18	-	-	-	-	ND
MTCA Method A Cleanup Level for Mercury in mg/Kg			2				

WM  
Graff Facility  
1820 W. Ham Road.  
Mediaville, OH 44130-9022

Reprint  
Ticket# 644611  
Ph: (509)244-0151

COPY

Customer Name ABLECLEAN ABLE CLEAN-UP Carrier BODES  
Ticket Date 08/04/2021 Vehicle# JAY  
Payment Type Credit Account Container  
Manual Ticket# Driver  
Route Check#  
Hauling Ticket# Billing# 0000726  
Destination Grid  
Manifest 115978wa  
Profile 115978WA (LF02 - Soils with low mercury contamination)  
Generator 168-ABLE CLEAN-UP TECHNOLOGIES ABLE CLEAN-UP TECHNOLOGIES INC 9725 N NINE M  
PO# 21267

Category: \_\_\_\_\_  
Job # 21267 Sundance  
Approved: [Signature]  
Check# \_\_\_\_\_ Paid ☐

	Time	Scale	Operator	Inbound	Gross	
In	08/04/2021 11:45:32	Scale1	ashield2		Tare	89840 lb
Out	08/04/2021 12:03:04	Scale1	Fbaxter		Net	38340 lb
					Tons	51500 lb
						25.75

Comments

Product	LD%	Qty	UOM	Rate	Tax/Fee	Amount	Origin
1 Cont Soil Pet-RGC-Tons-	100	25.75	Tons				SPOKANE
2 EVF-P10-Environmental F	100		%				SPOKANE
3 SRHD1-Spokane Regional	100	25.75	Tons				SPOKANE

Total Tax/Fees  
Total Ticket

Driver's Signature

[Signature]

The total amount includes fees and taxes that may not all be listed on this ticket due to technic limitation.



Waste Management  
Graham Facility  
18200 Graham Road  
Medina, WA 99022

Ph: (509) 244-0151

Original  
Ticket# 644633

#21267 ✓

Customer Name ABLECLEAN ABLE CLEAN-UP Carrier ABLECLEANUP ABLE CLEANUP TECHNOLOGIE  
Ticket Date 08/04/2021 Vehicle# DARON  
Payment Type Credit Account Container  
Manual Ticket# Driver DARON SLATER  
Route Check#  
Hauling Ticket# Billing# 0000726  
Destination Grid  
Manifest 115978wa  
Profile 115978WA (LF02 - Soils with low mercury contamination)  
Generator 168-ABLE CLEAN-UP TECHNOLOGIES ABLE CLEAN-UP TECHNOLOGIES INC 9725 N NINE M  
PO# 21267

Category: 21267 Fulcrum Sandance  
Job # 21267  
Approved: \_\_\_\_\_  
Check# \_\_\_\_\_ Paid ☐

	Time	Scale	Operator	Inbound	Gross	
In	08/04/2021 12:52:18	Scale1	ashield2		Tare	63240 lb
Out	08/04/2021 13:01:31	Scale1	ashield2		Net	30760 lb
					Tons	32480 lb
						16.24

Comments

Product	LD%	Qty	UOM	Rate	Tax/Fee	Amount	Origin
1 Cont Soil Pet-RGC-Tons-	100	16.24	Tons				SPOKANE
2 EVF-P10-Environmental F	100		%				SPOKANE
3 SRHD1-Spokane Regional	100	16.24	Tons				SPOKANE

Total Tax/Fees  
Total Ticket

Driver's Signature

AS R. Daron

The total amount includes fees and taxes that may not all be listed on this ticket due to technic limitation.



W  
Grain Processing Facility  
1820 W. Main Road  
Medicine Lake, WY 81302

Reprint  
Ticket# 640543  
Ph: (509) 244-0151

Category: \_\_\_\_\_  
Job # 21214 Fulcrum  
Approved: \_\_\_\_\_  
Check# \_\_\_\_\_ Paid ☐

Customer Name ABLE CLEAN ABLE CLEAN-UP Carrier BODES  
Ticket Date 06/16/2021 Vehicle# JAY  
Payment Type Credit Account Container  
Manual Ticket# Driver  
Route Check#  
Hauling Ticket# Billing# 0000726  
Destination Grid  
Manifest 115978wa  
Profile 115978WA (LF02 - Soils with low mercury contamination)  
Generator 168-ABLE CLEAN-UP TECHNOLOGIES ABLE CLEAN-UP TECHNOLOGIES INC 9725 N NINE M  
PO#

	Time	Scale	Operator	Inbound	Gross	
In	06/16/2021 10:49:41	Scale1	ASHIELD2		Tare	87320 lb
Out	06/16/2021 11:14:38	Scale1	ASHIELD2		Net	38520 lb
					Tons	48800 lb
						24.40

Comments

Product	LD%	Qty	UOM	Rate	Tax/Fee	Amount	Origin
1 Cont Soil Pet-RGC-Tons-	100	24.40	Tons				SPOKANE
2 EVF-P10-Environmental F	100		%				SPOKANE
3 SRHD1-Spokane Regional	100	24.40	Tons				SPOKANE

Total Tax/Fees \$ 923.58  
Total Ticket

Driver's Signature *Me*

The total amount includes fees and taxes that may not all be listed on this ticket due to technic limitation.



Graham Road Facility  
1820 S. Graham Road  
Medicine Lake, WA 99022

Original  
Ticket# 640560  
Ph: (509)244-0151

Not been  
uploaded

Customer Name ABLECLEAN ABLE CLEAN-UP Carrier LABUTE LABUTE  
Ticket Date 06/16/2021 Vehicle# JAY  
Payment Type Credit Account Container  
Manual Ticket# Driver JAY  
Route Check#  
Hauling Ticket# Billing# 0000726  
Destination Grid

Category: 21214 Fulcrum  
Job # 21214 Fulcrum  
Approved: \_\_\_\_\_  
Check# \_\_\_\_\_ Paid ☐

Manifest 11578WA  
Profile 115978WA (LF02 - Soils with low mercury contamination)  
Generator 168-ABLE CLEAN-UP TECHNOLOGIES ABLE CLEAN-UP TECHNOLOGIES INC 9725 N NINE M  
PO#

	Time	Scale	Operator	Inbound	Gross	
In	06/16/2021 12:07:23	Scale1	ASHIELD2		Tare	94580 lb
Out	06/16/2021 12:21:27	Scale1	ASHIELD2		Net	37020 lb
					Tons	57560 lb
						28.78

Comments

Product	LD%	Qty	UOM	Rate	Tax/Fee	Amount	Origin
1 Cont Soil Pet-RGC-Tons-	100	28.78	Tons				SPOKANE
2 EVF-P10-Environmental F	100		%				SPOKANE
3 SRHD1-Spokane Regional	100	28.78	Tons				SPOKANE

Total Tax/Fees  
Total Ticket

Driver's Signature

*AS R. King*

The total amount includes fees and taxes that may not all be listed on this ticket due to technic limitation.



**W**  
Granville Facility  
1820 Granville Road  
Medical Lake, WA 99022

Original  
Ticket# 634879  
Ph: (509) 244-0151

Customer Name ABLECLEAN ABLE CLEAN-UP Carrier JH BRADY  
Ticket Date 04/07/2021 Vehicle# JOHN  
Payment Type Credit Account Container  
Manual Ticket# Driver  
Route Check#  
Hauling Ticket# Billing# 0000726  
Destination Grid  
Manifest 115978WA  
Profile 115978WA (LF02 ~ Soils with low mercury contamination)  
Generator 168-ABLE CLEAN-UP TECHNOLOGIES ABLE CLEAN-UP TECHNOLOGIES INC 9725 N NINE M  
PO#

	Time	Scale	Operator	Inbound	Gross	
In	04/07/2021 11:28:38	Scale1	ashield2		Tare	89980 lb 42320 lb
Out	04/07/2021 11:43:50	Scale1	ashield2		Net	47660 lb
					Tons	23.83

Comments

Product	LD%	Qty	UOM	Rate	Tax/Fee	Amount	Origin
1 Cont Soil Pet-RGC-Tons-	100	23.83	Tons				SPOKANE
2 EVF-P10-Environmental F	100		%				SPOKANE
3 SRHD1-Spokane Regional	100	23.83	Tons				SPOKANE

Total Tax/Fees  
Total Ticket

Driver's Signature

*AS Kohn*

The total amount includes fees and taxes that may not all be listed on this ticket due to technical limitation.

W  
Grain Facility  
1820 1st Avenue  
Medicine Lake, MN 56002

Original  
Ticket# 634905  
Ph: (509)244-0151

Customer Name ABLECLEAN ABLE CLEAN-UP Carrier JH BRADY  
Ticket Date 04/07/2021 Vehicle# john  
Payment Type Credit Account Container  
Manual Ticket# Driver  
Route Check#  
Hauling Ticket# Billing# 0000726  
Destination Grid  
Manifest 115978wa  
Profile 115978WA (LF02 - Soils with low mercury contamination)  
Generator 168-ABLE CLEAN-UP TECHNOLOGIES ABLE CLEAN-UP TECHNOLOGIES INC 9725 N NINE M  
PO#

Time	Scale	Operator	Inbound	Gross	
In 04/07/2021 13:57:00	Scale1	ASHIELD2		Tare	90260 lb
Out 04/07/2021 14:12:23	Scale1	ASHIELD2		Net	42220 lb
				Tons	48040 lb
					24.02

Comments

Product	LD%	Qty	UOM	Rate	Tax/Fee	Amount	Origin
1 Cont Soil Pet-RGC-Tons- 100		24.02	Tons				SPOKANE
2 EVF-P10-Environmental F 100			%				SPOKANE
3 SRHD1-Spokane Regional 100		24.02	Tons				SPOKANE

Total Tax/Fees  
Total Ticket

Driver's Signature

ASR John

The total amount includes fees and taxes that may not all be listed on this ticket due to technic limitation.

W  
Graham Facility  
1820 W. Main Road  
Medicine Lake, MT 59022

Original  
Ticket# 634927  
Ph: (509) 244-0151

Customer Name ABLECLEAN ABLE CLEAN-UP Carrier JH BRADY  
Ticket Date 04/07/2021 Vehicle# john  
Payment Type Credit Account Container  
Manual Ticket# Driver  
Route Check#  
Hauling Ticket# Billing# 0000726  
Destination Grid  
Manifest 115978wa  
Profile 115978WA (LF02 - Soils with low mercury contamination)  
Generator 168-ABLE CLEAN-UP TECHNOLOGIES ABLE CLEAN-UP TECHNOLOGIES INC 9725 N NINE M  
PO#

	Time	Scale	Operator	Inbound	Gross	
In	04/07/2021 16:13:37	Scale1	ASHIELD2		Tare	102460 lb
Out	04/07/2021 16:26:28	Scale1	ASHIELD2		Net	42060 lb
					Tons	60400 lb
						30.20

Comments

Product	LD%	Qty	UOM	Rate	Tax/Fee	Amount	Origin
1 Cont Soil Pet-RGC-Tons-	100	30.20	Tons				SPOKANE
2 EVF-P10-Environmental F	100		%				SPOKANE
3 SRHD1-Spokane Regional	100	30.20	Tons				SPOKANE

Total Tax/Fees  
Total Ticket

Driver's Signature

*John*

The total amount includes fees and taxes that may not all be listed on this ticket due to technical limitation.



**W**  
Graha Facility  
1820 Ham Road  
Medina, LA 70401-9022

Original  
Ticket# 636063  
Ph: (509) 244-0151

Customer Name ABLE CLEAN ABLE CLEAN-UP Carrier JH BRADY  
Ticket Date 04/22/2021 Vehicle# JAY  
Payment Type Credit Account Container  
Manual Ticket# Driver  
Route Check#  
Hauling Ticket# Billing# 0000726  
Destination Grid  
Manifest 115978WA  
Profile 115978WA (LF02 - Soils with low mercury contamination)  
Generator 168-ABLE CLEAN-UP TECHNOLOGIES ABLE CLEAN-UP TECHNOLOGIES INC 9725 N NINE M  
PO#

Time	Scale	Operator	Inbound	Gross	
In 04/22/2021 09:51:12	Scale1	ashield2		Tare	109120 lb
Out 04/22/2021 10:09:24	Scale1	ashield2		Net	41880 lb
				Tons	67240 lb
					33.62

Comments

Product	LD%	Qty	UOM	Rate	Tax/Fee	Amount	Origin
1 Cont Soil Pet-RGC-Tons-	100	33.62	Tons				SPOKANE
2 EVF-P10-Environmental F	100		%				SPOKANE
3 SRHD1-Spokane Regional	100	33.62	Tons				SPOKANE

Total Tax/Fees  
Total Ticket

Driver's Signature

*JH Brady*

The total amount includes fees and taxes that may not all be listed on this ticket due to technic limitation.

**WMA**  
Graham Facility  
18200 Ham Road  
Medford, OR 97504  
Call 503-244-0151

Original  
Ticket# 636098  
Ph: (509)244-0151

Customer Name ABLECLEAN ABLE CLEAN-UP Carrier JH BRADY  
Ticket Date 04/22/2021 Vehicle# john  
Payment Type Credit Account Container  
Manual Ticket# Driver  
Route Check#  
Hauling Ticket# Billing# 0000726  
Destination Grid  
Manifest 115978wa  
Profile 115978WA (LF02 - Soils with low mercury contamination)  
Generator 168-ABLE CLEAN-UP TECHNOLOGIES ABLE CLEAN-UP TECHNOLOGIES INC 9725 N NINE M  
PO#

	Time	Scale	Operator	Inbound	Gross	
In	04/22/2021 12:03:51	Scale1	ashield2		Tare	111940 lb 41800 lb
Out	04/22/2021 12:19:28	Scale1	ashield2		Net	70140 lb
					Tons	35.07

Comments

Product	LD%	Qty	UOM	Rate	Tax/Fee	Amount	Origin
1 Cont Soil Pet-RGC-Tons-	100	35.07	Tons				SPOKANE
2 EVF-P10-Environmental F	100		%				SPOKANE
3 SRHD1-Spokane Regional	100	35.07	Tons				SPOKANE

Total Tax/Fees  
Total Ticket

Driver's Signature

*M.E.*

The total amount includes fees and taxes that may not all be listed on this ticket due to technic limitation.

**WMA**  
Grainger Facility  
18200 W. Ham Road  
Medford, OR 97504  
Call 503-255-9022

Original  
Ticket# 636063  
Ph: (509) 244-0151

Customer Name ABLECLEAN ABLE CLEAN-UP Carrier JH BRADY  
Ticket Date 04/22/2021 Vehicle# JAY  
Payment Type Credit Account Container  
Manual Ticket# Driver  
Route Check#  
Hauling Ticket# Billing# 0000726  
Destination Grid  
Manifest 115978WA  
Profile 115978WA (LF02 - Soils with low mercury contamination)  
Generator 168-ABLE CLEAN-UP TECHNOLOGIES ABLE CLEAN-UP TECHNOLOGIES INC 9725 N NINE M  
PO#

	Time	Scale	Operator	Inbound	Gross	
In	04/22/2021 09:51:12	Scale1	ashield2		Tare	109120 lb
Out	04/22/2021 10:09:24	Scale1	ashield2		Net	41880 lb
					Tons	67240 lb
						33.62

Comments

Product	LD%	Qty	UOM	Rate	Tax/Fee	Amount	Origin
1 Cont Soil Pet-RGC-Tons-	100	33.62	Tons				SPOKANE
2 EVF-P10-Environmental F	100		%				SPOKANE
3 SRHD1-Spokane Regional	100	33.62	Tons				SPOKANE

Total Tax/Fees  
Total Ticket

Driver's Signature

*JH Brady*

The total amount includes fees and taxes that may not all be listed on this ticket due to technical limitation.



**WMA**  
Grainger Facility  
18200 Graham Road  
Medford, OR 97504  
Call 1-800-451-9902

Original  
Ticket# 636138  
Ph: (509)244-0151

Customer Name ABLECLEAN ABLE CLEAN-UP Carrier JH BRADY  
Ticket Date 04/22/2021 Vehicle# JOHN  
Payment Type Credit Account Container  
Manual Ticket# Driver  
Route Check#  
Hauling Ticket# Billing# 0000726  
Destination Grid  
Manifest 115978WA  
Profile 115978WA (LF02 - Soils with low mercury contamination)  
Generator 168-ABLE CLEAN-UP TECHNOLOGIES ABLE CLEAN-UP TECHNOLOGIES INC 9725 N NINE M  
PO#

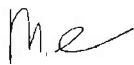
	Time	Scale	Operator	Inbound	Gross	
In	04/22/2021 14:29:00	Scale1	ASHIELD2		Tare	74000 lb 46640 lb
Out	04/22/2021 14:43:28	Scale1	ASHIELD2		Net	27360 lb
					Tons	13.68

Comments

Product	LD%	Qty	UOM	Rate	Tax/Fee	Amount	Origin
1 Cont Soil Pet-RGC-Tons-	100	13.68	Tons				SPOKANE
2 EVF-P10-Environmental F	100		%				SPOKANE
3 SRHD1-Spokane Regional	100	13.68	Tons				SPOKANE

Total Tax/Fees  
Total Ticket

Driver's Signature



The total amount includes fees and taxes that may not all be listed on this ticket due to technical limitation.

WMA  
Graham Facility  
1820 W. Graham Road  
Medical Center, Spokane, WA 99022

Original  
Ticket# 636115

Ph: (509) 244-0151

Customer Name ABLECLEAN ABLE CLEAN-UP Carrier BODES  
Ticket Date 04/22/2021 Vehicle# JAY  
Payment Type Credit Account Container  
Manual Ticket# Driver  
Route Check#  
Hauling Ticket# Billing# 0000726  
Destination Grid  
Manifest 1  
Profile 115978WA (LF02 - Soils with low mercury contamination)  
Generator 168-ABLE CLEAN-UP TECHNOLOGIES ABLE CLEAN-UP TECHNOLOGIES INC 9725 N NINE M  
PO#

	Time	Scale	Operator	Inbound	Gross	
In	04/22/2021 13:16:45	Scale1	sharrin5		Tare	93480 lb 38640 lb
Out	04/22/2021 13:37:39	Scale1	ashield2		Net	54840 lb
					Tons	27.42

Comments

Product	LD%	Qty	UOM	Rate	Tax/Fee	Amount	Origin
1 Cont Soil Pet-RGC-Tons-	100	27.42	Tons				SPOKANE
2 EVF-P10-Environmental F	100		%				SPOKANE
3 SRHD1-Spokane Regional	100	27.42	Tons				SPOKANE

Total Tax/Fees  
Total Ticket

Driver's Signature

*AS Kray*

The total amount includes fees and taxes that may not all be listed on this ticket due to technical limitation.

W  
Graham Facility  
1820 S. Graham Road  
Mediavest Lake, ID 83802

Ph: (509) 244-0151

Original  
Ticket# 636080

Customer Name ABLECLEAN ABLE CLEAN-UP Carrier BODES  
Ticket Date 04/22/2021 Vehicle# JAY  
Payment Type Credit Account Container  
Manual Ticket# Driver  
Route Check#  
Hauling Ticket# Billing# 0000726  
Destination Grid  
Manifest 115978wa  
Profile 115978WA (LF02 - Soils with low mercury contamination)  
Generator 168-ABLE CLEAN-UP TECHNOLOGIES ABLE CLEAN-UP TECHNOLOGIES INC 9725 N NINE M  
PO#

	Time	Scale	Operator	Inbound	Gross	
In	04/22/2021 10:46:16	Scale1	ashield2		Tare	95580 lb 38720 lb
Out	04/22/2021 11:06:30	Scale1	ashield2		Net	56860 lb
					Tons	28.43

Comments

Product	LD%	Qty	UOM	Rate	Tax/Fee	Amount	Origin
1 Cont Soil Pet-RGC-Tons-	100	28.43	Tons				SPOKANE
2 EVF-P10-Environmental F	100		%				SPOKANE
3 SRHD1-Spokane Regional	100	28.43	Tons				SPOKANE

Total Tax/Fees  
Total Ticket

Driver's Signature

AS Koley

The total amount includes fees and taxes that may not all be listed on this ticket due to technic limitation.



**W** Facility  
1820 ...ham Road  
Medial ... 99022

Original  
Ticket# 636138  
Ph: (509)244-0151

Customer Name ABLECLEAN ABLE CLEAN-UP Carrier JH BRADY  
Ticket Date 04/22/2021 Vehicle# JOHN  
Payment Type Credit Account Container  
Manual Ticket# Driver  
Route Check#  
Hauling Ticket# Billing# 0000726  
Destination Grid  
Manifest 115978WA  
Profile 115978WA (LF02 - Soils with low mercury contamination)  
Generator 168-ABLE CLEAN-UP TECHNOLOGIES ABLE CLEAN-UP TECHNOLOGIES INC 9725 N NINE M  
PO#

	Time	Scale	Operator	Inbound	Gross	
In	04/22/2021 14:29:00	Scale1	ASHIELD2		Tare	74000 lb 46640 lb
Out	04/22/2021 14:43:28	Scale1	ASHIELD2		Net	27360 lb
					Tons	13.68

Comments

Product	LD%	Qty	UOM	Rate	Tax/Fee	Amount	Origin
1 Cont Soil Pet-RGC-Tons-	100	13.68	Tons				SPOKANE
2 EVF-P10-Environmental F	100		%				SPOKANE
3 SRHD1-Spokane Regional	100	13.68	Tons				SPOKANE

Total Tax/Fees  
Total Ticket

Driver's Signature *M.e*

The total amount includes fees and taxes that may not all be listed on this ticket due to technic limitation.

Graham Road Facility  
1820 S. Graham Road  
Medical Lake, WA 99022

Original  
Ticket# 636692  
Ph: (509)244-0151

Customer Name ABLECLEAN ABLE CLEAN-UP Carrier ABLECLEANUP ABLE CLEANUP TECHNOLOGIE  
Ticket Date 04/29/2021 Vehicle# DARREN  
Payment Type Credit Account Container  
Manual Ticket# Driver  
Route Check#  
Hauling Ticket# Billing# 0000726  
Destination Grid  
Manifest 115978WA  
Profile 115978WA (LF02 - Soils with low mercury contamination)  
Generator 168-ABLE CLEAN-UP TECHNOLOGIES ABLE CLEAN-UP TECHNOLOGIES INC 9725 N NINE M  
PO# 21122

	Time	Scale	Operator	Inbound	Gross	
In	04/29/2021 10:36:32	Scale1	FBAXTER		Tare	62660 lb
Out	04/29/2021 10:47:26	Scale1	FBAXTER		Net	30880 lb
					Tons	31780 lb
						15.89

Comments

Product	LD%	Qty	UOM	Rate	Tax/Fee	Amount	Origin
1 Cont Soil Pet-RGC-Tons-	100	15.89	Tons				SPOKANE
2 EVF-P10-Environmental F	100		%				SPOKANE
3 SRHD1-Spokane Regional	100	15.89	Tons				SPOKANE

Total Tax/Fees  
Total Ticket

Driver's Signature



The total amount includes fees and taxes that may not all be listed on this ticket due to technical limitation.