

# Technical Memorandum

---

**TO:** Sandy Smith, PE, LHG, Washington State Department of Ecology  
**CC:** Eric Huseby, City of Tacoma  
**FROM:** Katie Gauglitz and Jennifer Wynkoop  
**DATE:** April 19, 2021  
**RE:** **Long-Term Groundwater Monitoring Status Report No. 8**  
**January 2021 Annual Groundwater Monitoring**  
**Former Sauro's Cleanerama Site**  
**Tacoma, Washington**  
**Project No. 0094048.100.104**

## Introduction

On behalf of the City of Tacoma (City), Landau Associates, Inc. (LAI) is providing results for long-term groundwater monitoring activities at the former Sauro's Cleanerama site (site). Figure 1 shows the site location.

The City is implementing a Cleanup Action Plan (CAP; Ecology 2014), which is part of Agreed Order No. DE 11080 between the City and the Washington State Department of Ecology (Ecology). Under the CAP, the City is implementing a monitored natural attenuation (MNA) remedy that included 2 years of semiannual groundwater monitoring beginning in January 2016 and continuing through July 2017, followed by annual groundwater monitoring until groundwater at the site reaches cleanup goals (the CAP estimates 26 years of annual sampling). After completion of semiannual monitoring, winter was identified as the appropriate sampling timeframe because higher volatile organic compound (VOC) concentrations generally occur during the winter (LAI 2017). The City received approval from Ecology (Coleman 2018), and commenced the annual sampling in January 2018.

This technical memorandum summarizes the eighth groundwater monitoring event under the CAP, conducted on January 27, 2021. Monitoring includes collection of groundwater samples and analysis for VOCs and MNA geochemical parameters, in accordance with the CAP.

## Groundwater Monitoring Program Summary

The existing site groundwater monitoring well network includes 17 wells. Of the 17 wells, nine were selected for long-term monitoring under the CAP. Figure 2 shows the locations of the nine wells selected for long-term monitoring. Table 1 presents a sampling matrix for the long-term monitoring wells.

During the January 2021 sampling event, groundwater samples were collected in accordance with the Sampling and Analysis Plan (LAI 2013) and the sample matrix presented in Table 1. Samples for VOC and MNA analysis were collected using a peristaltic pump at MW-2. Samples for VOC and MNA analysis were collected using a dedicated Waterra foot valve at LAI-MW4. The other seven wells were

sampled using passive diffusion bags for VOCs and dedicated Waterra foot valves for MNA parameters. VOC samples at RNS-MW6 are collected at two discrete depths because of the relatively long screen (20 feet) and because prior sampling has demonstrated stratification within the well; all other wells were sampled at a single depth. All samples were submitted for analysis under proper chain-of-custody protocols to Eurofins TestAmerica Laboratories, Inc. (TestAmerica) located in Tacoma, Washington.

All groundwater samples were analyzed by the laboratory for VOC constituents of concern tetrachloroethene (PCE), trichloroethene (TCE), cis-1,2-dichloroethene (cDCE), and vinyl chloride (VC); and MNA parameters (chloride, nitrate, nitrite, total organic carbon [TOC], sulfate, sulfide, and dissolved gases [acetylene, methane, ethane, and ethene]). Samples were analyzed using the following methods: VOCs by US Environmental Protection Agency (EPA) Method 8260C; nitrate/nitrite and chloride/sulfate by EPA Method 300.0; TOC by EPA Method SM 5310B; sulfide by SM 4500-S2 D; and dissolved gases by EPA Method RSK-175. Field parameters were also collected, including dissolved oxygen (DO) and oxygen-reduction potential (ORP) using a field meter (YSI Quatro Pro Plus) and ferrous iron using a HACH® field test kit (Model IR-18C). A duplicate sample was collected at LAI-MW4 (Dup1) for quality control purposes. Data was electronically submitted to Ecology's Environmental Information Management system on March 16, 2021. Table 2 presents the analytical methods, practical quantitation limits (i.e., reporting limits), preservatives, and holding times. Table 3 and Figure 2 present VOC analytical results. Table 4 presents MNA analytical results. VOC time series plots are provided in Attachment 1. A copy of the laboratory data packages for the most recent sampling event (January 2021) are provided in Attachment 2.

## Volatile Organic Compound Results

The VOC plume at the site is somewhat bifurcated with the main portion of the plume extending east-northeast of the site and a smaller, lower-concentration portion of the plume extending south-southeast of the site. The east-northeast segment of the plume is characterized by monitoring wells LAI-MW5, RNS-MW6, MW-13, LAI-MW1, LAI-MW2, LAI-MW3, and LAI-MW4. The south-southeast segment of the plume is characterized by monitoring wells RNS-MW2 and MW-2.

VOC analytical results from the January 2021 sampling event are consistent with historical results. At three wells (LAI-MW1, LAI-MW5, and MW-2), all VOC concentrations are below their respective cleanup levels. LAI-MW5 is located adjacent to the northeast corner of the property, LAI-MW1 bounds the northern edge of the east-northeast segment of the plume, and MW-2 is located toward the downgradient end of the south-southeast segment of the plume. At the six remaining wells, one or more VOCs exceeded cleanup levels. The cleanup level for both PCE and TCE is 5 micrograms per liter ( $\mu\text{g/L}$ ), the cleanup level for cDCE is 70  $\mu\text{g/L}$ , and the cleanup level for VC is 0.2  $\mu\text{g/L}$ .

- LAI-MW2, MW-13, and RNS-MW6 (42.5 and 52.5 feet), which are located in the core of the east-northeast plume segment, continue to have the highest concentrations of VOCs.

- The January 2021 results indicate concentrations above cleanup levels for all four constituents except for cDCE at LAI-MW-2 and MW-13, with PCE and TCE concentrations having the largest exceedances of cleanup levels.
- Concentrations of PCE at these wells ranged from 230 µg/L to 950 µg/L and concentrations of TCE ranged from 83 µg/L to 350 µg/L.
- Analytical results from LAI-MW3, also located in the east-northeast plume segment, indicate concentrations of PCE and TCE exceeded applicable cleanup levels; however, concentrations are somewhat lower (83 µg/L and 36 µg/L, respectively) than at the three wells discussed above. LAI-MW3 is located downgradient of MW-13.
- Analytical results from RNS-MW2, located in the south-southeast plume segment, indicate that the concentration of PCE (22 µg/L) continues to exceed the applicable cleanup level. However, the concentration of PCE at adjacent well MW-2 (1.3 µg/L) is below the cleanup level. RNS-MW2 is screened slightly deeper (38.5 feet below ground surface [ft bgs]), than MW-2 (15 ft bgs).
- Results in well MW-4 indicate that only VC exceeded the cleanup level (0.2 µg/L) with a concentration of 1.4 µg/L.

### **Discussion of Volatile Organic Compound Data Trends**

An interim soil removal action was completed at the site in 2010 and the site was subsequently filled and paved. In the downgradient well nearest the source area (RNS-MW6), a period of increasing VOC concentrations occurred following the removal action, likely due to significant soil disturbance associated with the removal action. A turning point occurred in 2013, and formerly increasing VOC concentration trends at RNS-MW6 began to decline. In wells farther downgradient, the shift in concentration trends from increasing to decreasing occurred later, in 2016. The following sections provide detailed observations regarding VOC concentration trends. VOC concentration time series plots are provided in Attachment 1.

#### ***East-Northeast Plume Segment***

- LAI-MW1 and LAI-MW5 have historically shown decreasing concentration trends with recent trends indicating that concentrations of all VOCs remain below cleanup levels and near or below the laboratory reporting limits. LAI-MW5 is located adjacent to the former source area, and LAI-MW1 is located downgradient and bounds the northern edge of the plume.
- LAI-MW4 has historically shown decreasing or non-detect concentration trends with recent trends indicating that concentrations of TCE, cDCE, and VC may be increasing. LAI-MW4 is the farthest downgradient well and is intended to monitor the downgradient extent of the plume.
- RNS-MW6, located immediately downgradient of the source area, is sampled at two depths within the screen. The data trends at the 52.5-foot sampling depth indicate somewhat steady PCE, TCE, and cDCE concentrations but lower than the historical maximums in 2012 and 2013. Overall, data trends are relatively stable for PCE, TCE, and cDCE. The VC concentration is generally decreasing, and although an anomalous spike occurred during January 2017, concentrations subsequently decreased. VOC concentration trends at the 42.5-foot depth vary

by constituent. PCE, TCE, and cDCE showed relatively stable or decreasing trends from 2013 through 2017. In 2018, an anomalous spike occurred for these three constituents. Concentrations then decreased for two years and showed an increase in 2021. Data trends for these three constituents are difficult to interpret due to variability. VC was detected at higher concentrations historically but has been declining in concentration since June 2013.

- Data trends in the mid-plume region are generally declining.
  - Concentrations at MW-13 show decreasing trends for all four VOCs through July 2017, but concentrations have been increasing since then. MW-13 is located down-gradient of the source area and RNS-MW6.
  - At LAI-MW2, peak concentrations of PCE, TCE, and cDCE occurred in 2016, somewhat later than other upgradient wells. Since 2016, concentrations of PCE, TCE, and cDCE have been declining. Concentrations of VC at LAI-MW2 were higher between 2010 and 2012 but have been generally decreasing since then.
  - LAI-MW3 exhibits similar trends to LAI-MW2 in terms of the PCE, TCE and cDCE trends; however, VC at this well has not been detected since 2016.
- Data trends at downgradient well LAI-MW4 show potentially increasing trends. Concentrations of TCE and VC were non-detect for approximately seven years, but detections have appeared over the last two years. cDCE was declining until 2016 but has shown an increasing trend since then. PCE remains non-detect.

### ***South-Southeast Plume Segment***

- At RNS-MW2, only PCE exceeded the applicable cleanup level in 2021. PCE concentrations showed an increasing trend until 2016; however, concentrations have been declining since then.
- At MW-2, no constituents exceeded the applicable cleanup level in 2020. Concentrations show decreasing trends for all four VOCs through 2013. Since 2016, concentrations of all VOCs have been fluctuating, with no apparent trend.

### **Monitored Natural Attenuation Results**

Natural attenuation of chlorinated ethenes occurs through several mechanisms with the primary mechanism being biologically mediated reductive dechlorination. For reductive dechlorination to occur, the aquifer must be reducing, and a food source (electron donor) for the bacteria must be available. Measures of aquifer redox conditions include DO, ORP, nitrate, ferrous iron, sulfate, and methane. TOC concentration is a measure of available electron donor. In general, low concentrations of DO, nitrate, and sulfate, and detections or elevated concentrations of ferrous iron and methane are indicators of reduced aquifer conditions. However, the redox state of the aquifer can be variable and complex, and assessment typically requires evaluation of multiple indicators.

MNA data appear to suggest the most favorable conditions for reductive dechlorination at LAI-MW5 (near the source area) and LAI-MW4 (the most downgradient well) where ferrous iron concentrations are highest. Elevated TOC concentrations also occur at these wells, indicating the presence of electron

---

donor. Indicators of reducing aquifer conditions and electron donor availability at LAI-MW4 and LAI-MW5 during the January 2021 sampling event are summarized below.

- Ferrous iron was detected in both wells at concentrations of 5.0 milligrams per liter (mg/L) at LAI-MW4 and 3.5 mg/L at LAI-MW5.
- Nitrate and nitrite were detected at low concentrations at LAI-MW4 and LAI-MW5. Detections of sulfate are relatively low.
- Methane was detected at a concentration of 1.0 mg/L at LAI-MW4 and 10 mg/L at LAI-MW5.
- ORP readings were negative at both wells.
- TOC concentrations were somewhat elevated at both wells (concentrations of 3.2 mg/L and 7.3 mg/L at LAI-MW4 and LAI-MW5, respectively).

At the remaining seven wells, results indicate some capacity for reductive dechlorination. Ferrous iron was detected at all wells, TOC is present at four of the seven wells, and nitrate and nitrite are low or not detected. Additionally, VOC concentrations at most wells appear to be declining. January 2021 MNA analytical results are provided in Table 4.

## **Occurrence of Problems**

None occurred.

## **Planned Groundwater Monitoring Activities**

Groundwater monitoring results will continue to be submitted to Ecology 60 days after completion of sampling activities. The next scheduled sampling event will occur in January 2022.

## **Use of this Technical Memorandum**

This technical memorandum has been prepared for the exclusive use of the City of Tacoma and Washington State Department of Ecology for specific application to the former Sauro's Cleanerama Groundwater Monitoring project. No other party is entitled to rely on the information, conclusions, and recommendations included in this document without the express written consent of LAI. Further, the reuse of information, conclusions, and recommendations provided herein for extensions of the project or for any other project, without review and authorization by LAI, shall be at the user's sole risk. LAI warrants that within the limitations of scope, schedule, and budget, our services have been provided in a manner consistent with that level of care and skill ordinarily exercised by members of the profession currently practicing in the same locality under similar conditions as this project. LAI makes no other warranty, either express or implied.

Please contact us if you have any questions concerning groundwater monitoring activities at the site or the results presented in this status report. This document has been prepared under the supervision and direction of the following key staff.

LANDAU ASSOCIATES, INC.



Katie Gauglitz, LG  
Project Geologist



Jennifer Wynkoop  
Principal Scientist

KMG/JWW/kjg

Y:\094\048.100\104 Year 4 2021\R\Status Report No. 8\LAI Sauros GW Monitoring Jan 2021 - draft.docx

## References

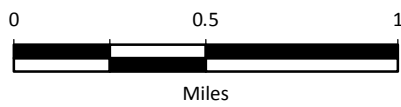
- Coleman, M. 2018. Re: Draft Sauro's Long-Term Groundwater Monitoring Status Report No. 4. From Marv Coleman, Toxics Cleanup Program, Washington State Department of Ecology, to Sierra Mott, Senior Project Scientist, Landau Associates, Inc. January 22.
- Ecology. 2014. Draft: Cleanup Action Plan, Former Sauro's Cleanerama Site, Tacoma, Washington. Washington State Department of Ecology. December.
- LAI. 2013. Draft Sampling and Analysis Plan, Former Sauro's Property, Tacoma, Washington. Landau Associates, Inc. January 24.
- LAI. 2017. Draft Technical Memorandum: Long-Term Groundwater Monitoring Status Report No. 4 for July 2017, Former Sauro's Cleanerama Site, Tacoma, Washington. Landau Associates, Inc. September 7.

## Attachments

- Figure 1: Vicinity Map
- Figure 2: Monitoring Well Network and Volatile Organic Compound Concentrations in Groundwater (January 2021)
- Table 1: Sample Matrix
- Table 2: Laboratory Analytical and Field Parameter Details
- Table 3: Groundwater Analytical Results for Constituents of Concern
- Table 4: Monitored Natural Attenuation Parameters
- Attachment 1: Constituents of Concern Concentration Time Series Plots
- Attachment 2: January 2021 Laboratory Data Package



G:\Projects\094\048\090\093\Long-Term GW Monitoring Status Report\F01VicMap.mxd 2/24/2016



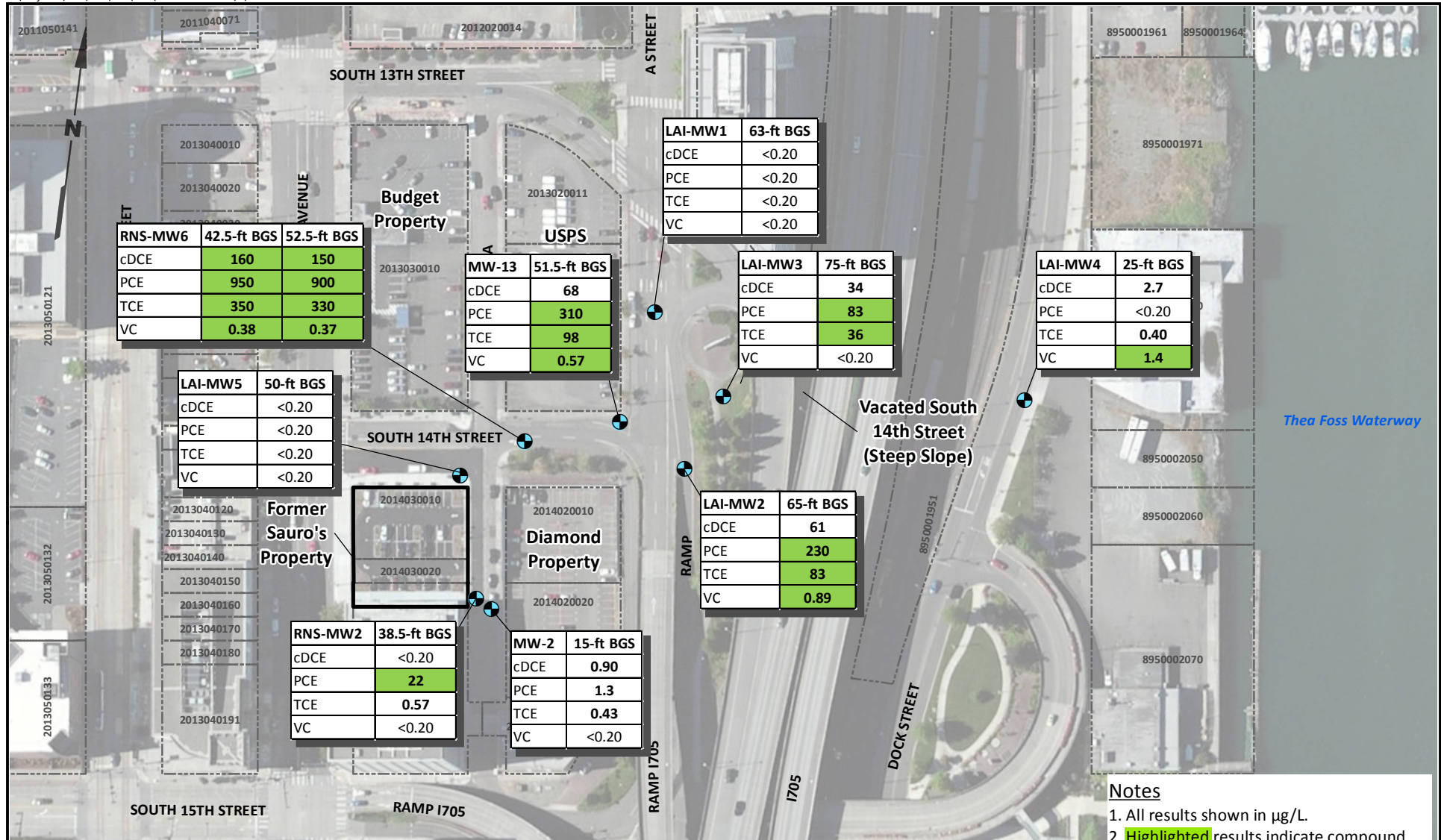
Data Source: Esri 2012



Sauro's Cleanerama  
Tacoma, Washington

Vicinity Map

Figure  
**1**



RNS-MW6	42.5-ft BGS	52.5-ft BGS
cDCE	160	150
PCE	950	900
TCE	350	330
VC	0.38	0.37

LAI-MW5	50-ft BGS
cDCE	<0.20
PCE	<0.20
TCE	<0.20
VC	<0.20

RNS-MW2	38.5-ft BGS
cDCE	<0.20
PCE	22
TCE	0.57
VC	<0.20

MW-13	51.5-ft BGS
cDCE	68
PCE	310
TCE	98
VC	0.57

MW-2	15-ft BGS
cDCE	0.90
PCE	1.3
TCE	0.43
VC	<0.20

LAI-MW1	63-ft BGS
cDCE	<0.20
PCE	<0.20
TCE	<0.20
VC	<0.20

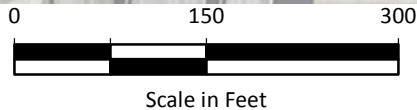
LAI-MW3	75-ft BGS
cDCE	34
PCE	83
TCE	36
VC	<0.20

LAI-MW2	65-ft BGS
cDCE	61
PCE	230
TCE	83
VC	0.89

LAI-MW4	25-ft BGS
cDCE	2.7
PCE	<0.20
TCE	0.40
VC	1.4

**Legend**

- Long-Term Groundwater Monitoring Well (and Sampling Depth)
- Subject Property
- Tax Parcels with Parcel ID



**Notes**

1. All results shown in µg/L.
2. **Highlighted** results indicate compound detected above cleanup level.
3. Black and white reproduction of this color original may reduce its effectiveness and lead to incorrect interpretation.

**Table 1**  
**Sample Matrix**  
**Former Sauro's Cleanerama Site – Tacoma, Washington**

Location	VOC Sampling Depth (ft)	VOC Sampling Method	MNA Parameters Sampling Depth (ft)	MNA Parameters Sampling Method
LAI-MW1	63	PDB	63	WAT
LAI-MW2	65	PDB	65	WAT
LAI-MW3	75	PDB	75	WAT
LAI-MW4	25	WAT	25	WAT
LAI-MW5	50	PDB	50	WAT
MW-2	15	PP	15	PP
MW-13	51.5	PDB	51.5	WAT
RNS-MW2	38.5	PDB	38.5	WAT
RNS-MW6 <sup>a</sup>	42.5 and 52.5	PDB	47.5	WAT

**Note:**

<sup>a</sup> For RNS-MW6, where there are two VOC sampling depths, the MNA sampling depth is the mid-point between the two VOC sampling depths.

**Abbreviations/Acronyms:**

ft = feet

HDPE = high-density polyethylene

MNA = monitored natural attenuation

PDB = passive diffusion bag

PP = peristaltic pump with dedicated tubing

VOC = volatile organic compound

WAT = (dedicated) Waterra foot valve (with dedicated 5/8-inch HDPE tubing)

**Table 2**  
**Laboratory Analytical and Field Parameter Details**  
**Former Sauro's Cleanerama Site – Tacoma, Washington**

Groundwater Analytical Parameters	EPA Analytical Method	Practical Quantitation Limit	Preservation	Maximum Holding Time (Days)
<b>Volatile Organic Compounds</b>				
Tetrachloroethene	8260C	0.2 µg/L	Add HCl to pH<2; Store cool at 6°C	14
Trichloroethene	8260C	0.2 µg/L	Add HCl to pH<2; Store cool at 6°C	14
cis-1,2-Dichloroethene	8260C	0.2 µg/L	Add HCl to pH<2; Store cool at 6°C	14
Vinyl Chloride	8260C	0.2 µg/L	Add HCl to pH<2; Store cool at 6°C	14
<b>Monitored Natural Attenuation</b>				
Chloride	300.0	0.90 mg/L	Store cool at 6°C	28
Nitrate (NO <sub>3</sub> ) (Total) as N	300.0	0.2 mg/L <sup>a</sup>	Store cool at 6°C	48 hours
Nitrite (NO <sub>2</sub> ) (Total) as N	300.0	0.4 mg/L <sup>a</sup>	Store cool at 6°C	48 hours
Total Organic Carbon	SM 5310B	1.00 mg/L	Add 2mL 9N H2SO4 pH<2; Store at 6°C	28
Sulfate (SO <sub>4</sub> ) (Total)	300.0	1.2 mg/L	Store cool at 6°C	28
Sulfide (SO <sub>2</sub> ) (Total)	SM 4500-S2 D	0.050 mg/L	Store cool at 6°C	7
AMEE	RSK-175	0.0050 mg/L	Store cool at 6°C	14

Groundwater Field Parameters	Data Collection Method	Instrument	Units
<b>Monitored Natural Attenuation</b>			
Conductivity	Field meter	YSI <sup>b</sup>	µS/cm
Dissolved Oxygen	Field meter	YSI	mg/L
Oxidation Reduction Potential	Field meter	YSI	units +/- mV
pH	Field meter	YSI	unitless
Temperature	Field meter	YSI	(°C)
Ferrous Iron (Fe <sup>2+</sup> )	Field meter	Hach® Kit	mg/L
Turbidity	Field meter	Turbidity Meter	NTU
<b>Water Level</b>	Field meter	Water Level Indicator	0.01 ft

**Notes:**

<sup>a</sup> Reporting limits for nitrate and nitrite were raised prior to the July 2016 sampling event due to laboratory capabilities.

<sup>b</sup> YSI shall be recalibrated daily.

**Abbreviations/Acronyms:**

AMEE = acetylene, methane, ethane, and ethene

°C = degrees Celsius

EPA = US Environmental Protection Agency

ft = foot

µg/L = micrograms per liter

mg/L = milligrams per liter

mL = milliliters

mV = millivolts

µS/cm = microSiemens per centimeter

NTU = nephelometric turbidity units

**Table 3**  
**Groundwater Analytical Results for Constituents of Concern**  
**Former Sauro's Cleanerama Site – Tacoma, Washington**

Analyte	Groundwater MTCA Method A CUL or Federal/State MCL (µg/L)	Sampling Location, Sampling Date, Laboratory Sample ID, Sample Type										
		LAI-MW1 1/27/2021 580-100752-5	LAI-MW2 1/27/2021 580-100752-4	LAI-MW3 1/27/2021 580-100752-8	LAI-MW4 1/27/2021 580-100752-2	LAI-MW4 1/27/2021 580-100752-3	LAI-MW5 1/27/2021 580-100752-6	MW-2 1/27/2021 580-100752-9	MW-13 1/27/2021 580-100752-12	RNS-MW2 1/27/2021 580-100752-7	RNS-MW6-42.5 1/27/2021 580-100752-10	RNS-MW6-52.5 1/27/2021 580-100752-11
		N	N	N	N	FD	N	N	N	N	N	N
<b>Volatile Organic Compounds (µg/L; SW-846 8260C)</b>												
cis-1,2-Dichloroethene	70 <sup>a</sup>	0.20 U	<b>61</b>	<b>34</b>	<b>2.7</b>	<b>2.5</b>	0.20 U	<b>0.90</b>	<b>68</b>	0.20 U	<b>160</b>	<b>150</b>
Tetrachloroethene	5	0.20 U	<b>230</b>	<b>83</b>	0.20 U	0.20 U	0.20 U	<b>1.3</b>	<b>310</b>	<b>22</b>	<b>950</b>	<b>900</b>
Trichloroethene	5	0.20 U	<b>83</b>	<b>36</b>	<b>0.40</b>	<b>0.40</b>	0.20 U	<b>0.43</b>	<b>98</b>	<b>0.57</b>	<b>350</b>	<b>330</b>
Vinyl Chloride	0.2	0.20 U	<b>0.89</b>	0.20 U	<b>1.4</b>	<b>1.3</b>	0.20 U	0.20 U	<b>0.57</b>	0.20 U	<b>0.38</b>	<b>0.37</b>

**Notes:**

U = The compound was not detected at the reported concentration.

**Bold** = detected analyte

Green highlighting = compound detected at concentrations above cleanup criteria.

<sup>a</sup> Cis-1,2-Dichloroethene does not have a MTCA Method A CUL for groundwater; therefore, the Federal/State primary MCL value of 70 µg/L is used as the CUL.

**Abbreviations and Acronyms:**

µg/L = micrograms per liter

CUL = cleanup level

FD = field duplicate

ID = identification

MCL = maximum contaminant levels

MTCA = Model Toxics Control Act

N = primary sample

**Table 4**  
**Monitored Natural Attenuation Parameters**  
**Former Sauro's Cleanerama Site – Tacoma, Washington**

Analyte	Sampling Location, Sampling Date, Laboratory Sample ID, Sample Type									
	LAI-MW1 1/27/2021 580-100752-5 N	LAI-MW2 1/27/2021 580-100752-4 N	LAI-MW3 1/27/2021 580-100752-8 N	LAI-MW4 1/27/2021 580-100752-2 N	LAI-MW4 1/27/2021 580-100752-3 FD	LAI-MW5 1/27/2021 580-100752-6 N	MW-2 1/27/2021 580-100752-9 N	MW-13 1/27/2021 580-100752-12 N	RNS-MW2 1/27/2021 580-100752-7 N	RNS-MW6-52.5 1/27/2021 580-100752-11 N
	<b>Natural Attenuation Parameters (mg/L; EPA 300.0/SM 4500-S2-D/SM 5310B)</b>									
Chloride	65	25	26	40	40	89	80	24	100	41
Nitrogen, Nitrate (as N)	2.0	0.54	1.3	0.68 J	0.61 J	0.60	3.2	1.2	3.9	1.1
Nitrogen, Nitrite	0.40 U	0.40 U	0.40 U	0.40 UJ	0.40 UJ	0.40 U	0.40 U	0.40 U	0.40 U	0.40 U
Sulfate	23	24	27	9.8	9.2	3.3	50	30	29	26 J
Sulfide, Total	0.050 U	0.050 U	0.050 U	0.050 UJ	0.050 U	0.050 U	0.050 U	0.050 U	0.050 U	0.050 U
Total Organic Carbon (TOC)	1.5 U	1.5 U	1.5	3.2	3.5	7.3	3.6	2.0	1.5 U	3.1
<b>Dissolved Gases (mg/L; RSK-175)</b>										
Acetylene	0.0050 U	0.0050 U	0.0050 U	0.0050 U	0.0050 U	0.0050 U	0.0050 U	0.0050 U	0.0050 U	0.0050 U
Ethane	0.0050 U	0.0050 U	0.0050 U	0.0050 U	0.0050 U	0.0050 U	0.0050 U	0.0050 U	0.0050 U	0.0051
Ethene	0.0050 U	0.0050 U	0.0050 U	0.0050 U	0.0050 U	0.0050 U	0.0050 U	0.0050 U	0.0050 U	0.0050 U
Methane	0.0050 U	0.0063	0.0050 U	1.0	1.0	10	0.30	0.0050 U	0.0050 U	0.16
<b>Field Parameters</b>										
Dissolved Oxygen (mg/L)	1.82	2.99	4.59	1.51	1.47	2.91	0.875	2.33	6.02	1.58
Oxidation Reduction Potential (mV)	-280.8	-265.0	-344.2	-251.6	-253.1	-268.6	-252.8	-388.1	-256.5	-380.4
Ferrous Iron (mg/L)	1.5	0.5	0.5	5.0	5.0	3.5	0.8	2.0	0.5	2.0

**Notes:**

**Bold** text indicates detected analyte.

U = The compound was not detected at the reported concentration.

J = The result is an estimated quantity. The associated numerical value is the approximate concentration of the analyte in the sample.

UJ = The analyte was analyzed for but was not detected. The reported quantitation limit is approximate and may be inaccurate or imprecise.

**Abbreviations and Acronyms:**

EPA = US Environmental Protection Agency

FD = field duplicate

ID = identification

mg/L = milligrams per liter

mV = millivolt

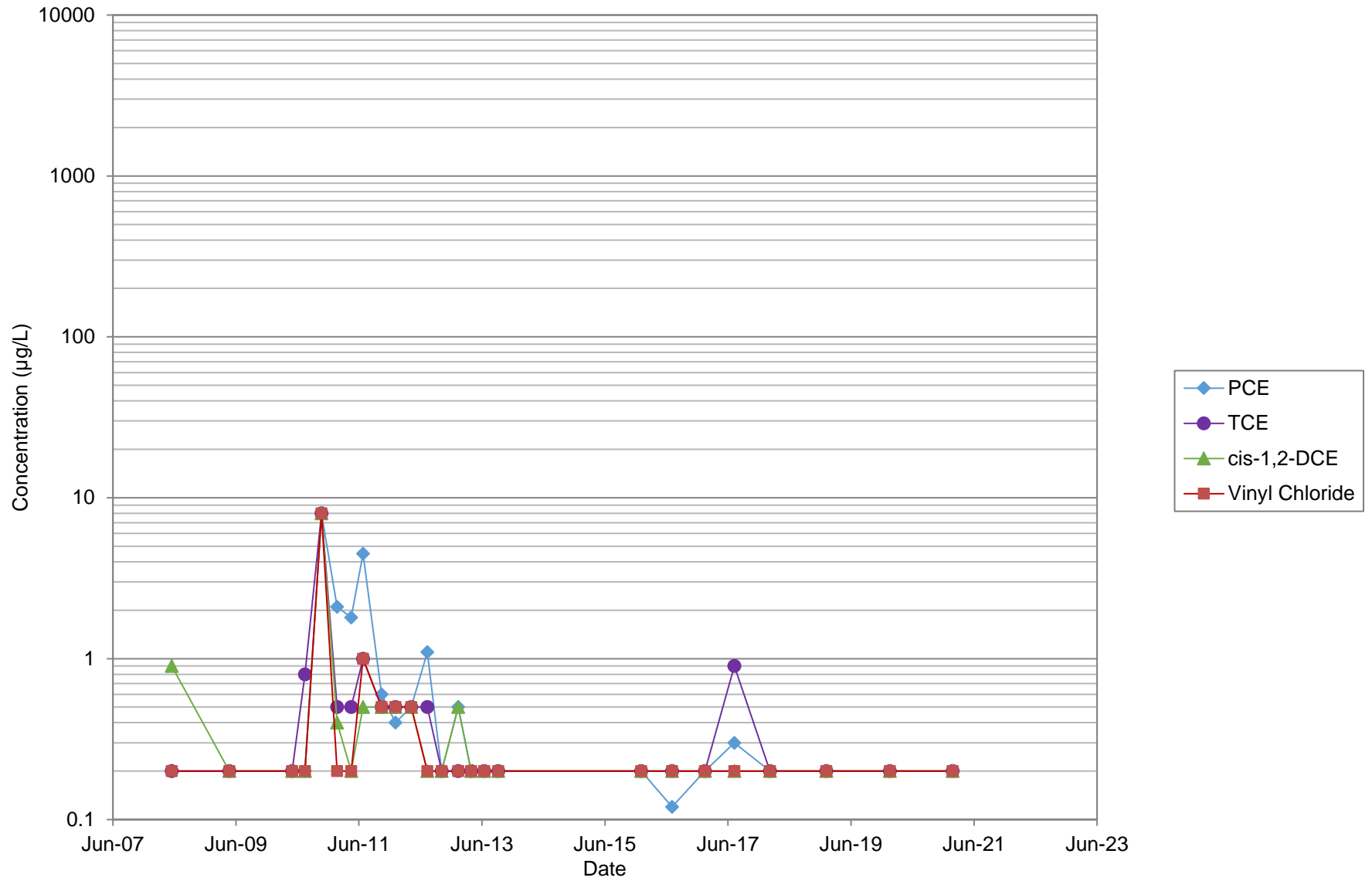
N = primary sample

# Constituents of Concern Concentration Time Series Plots

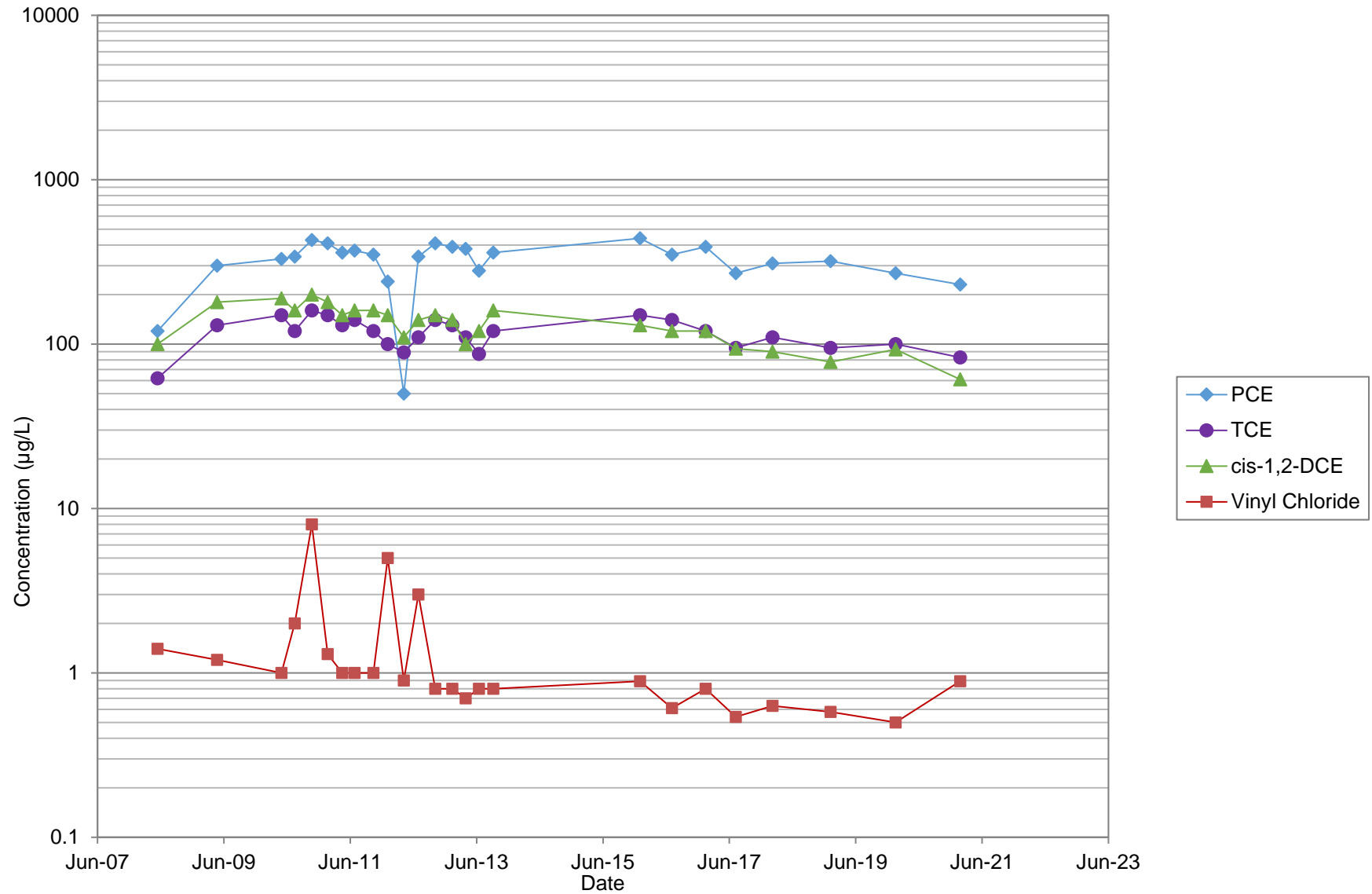
**Note:**

The analytical laboratory erroneously reported down to the method detection limit in January and July 2016.

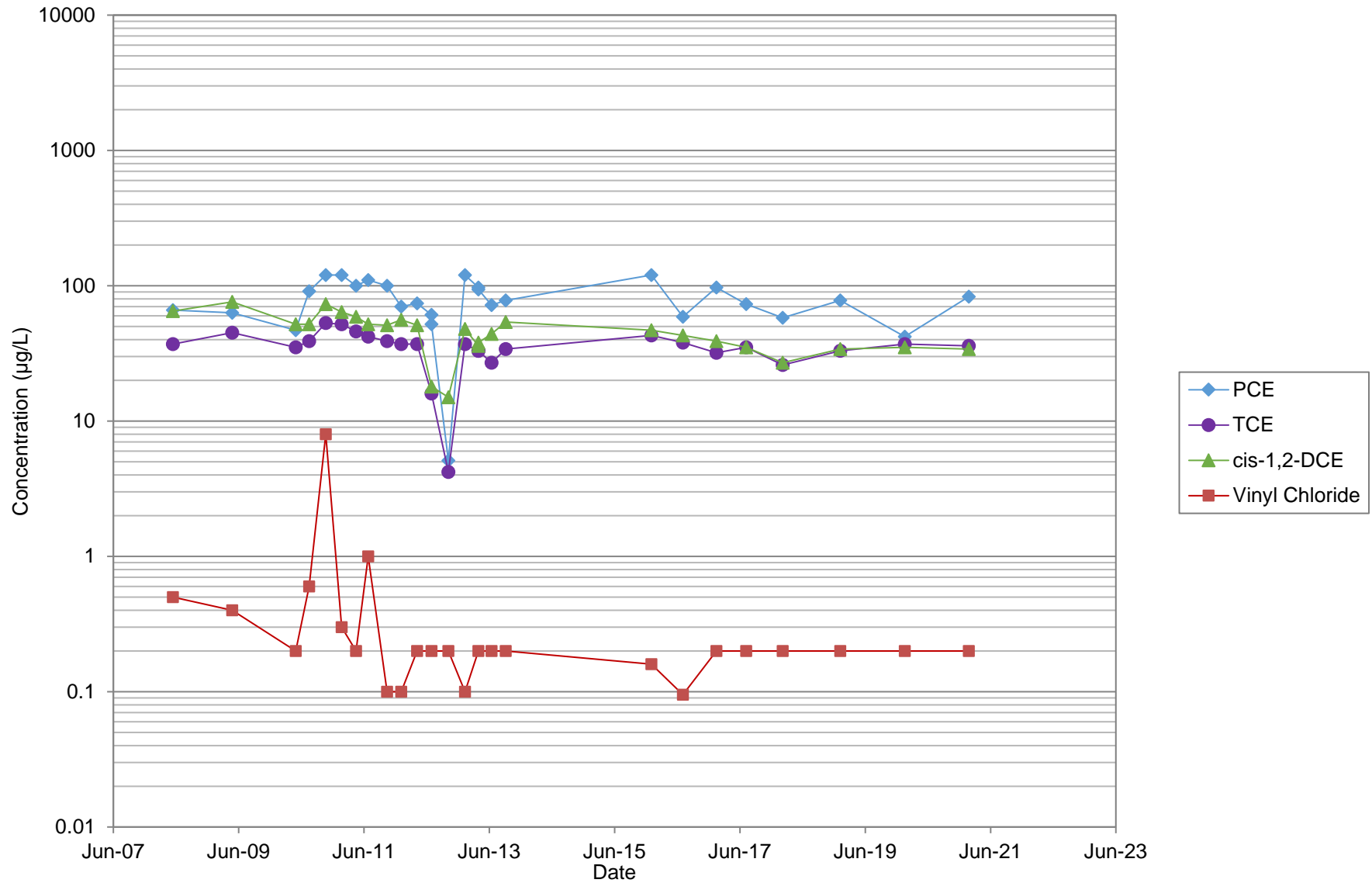
# LAI-MW1



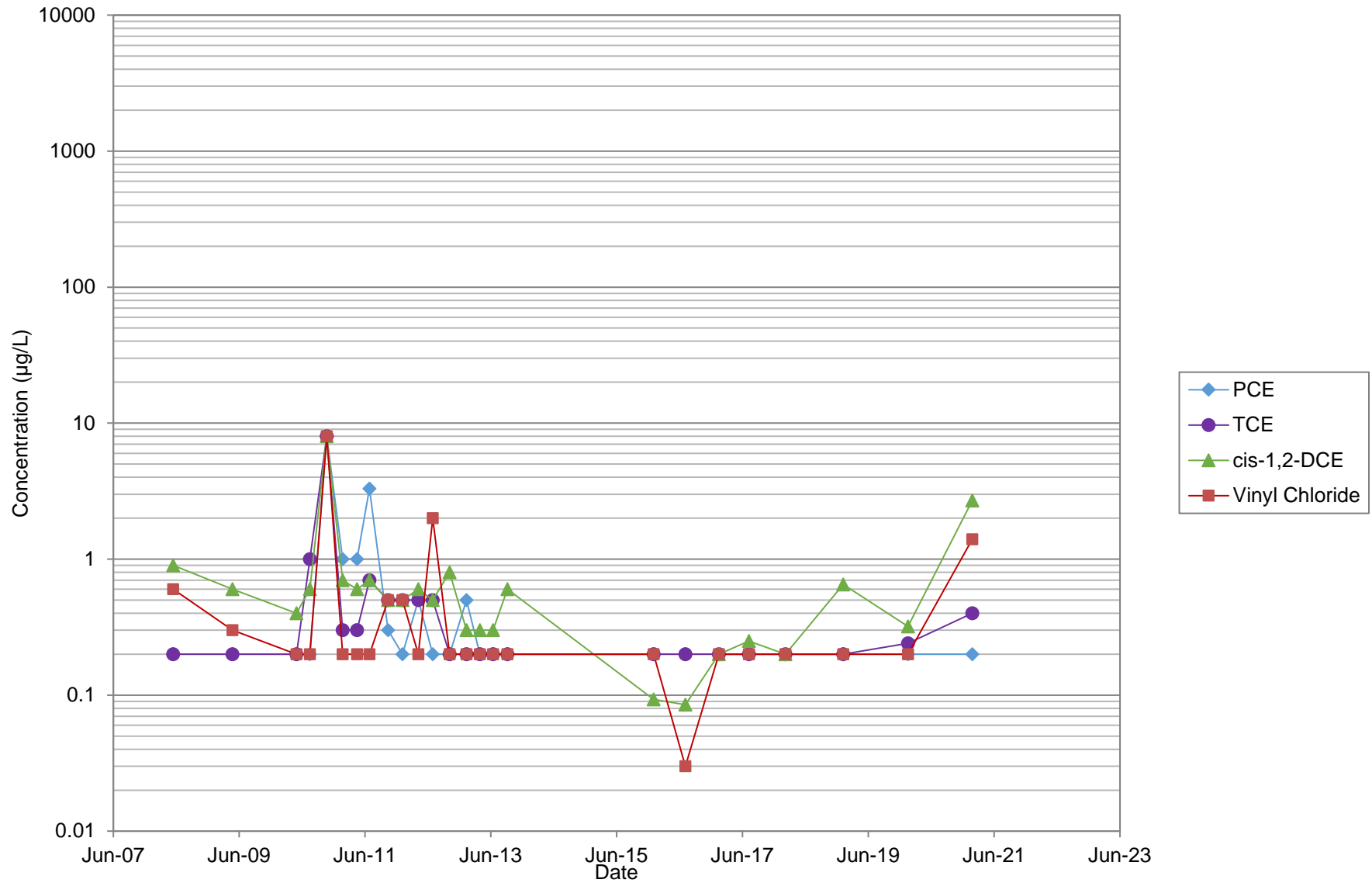
# LAI-MW2



# LAI-MW3

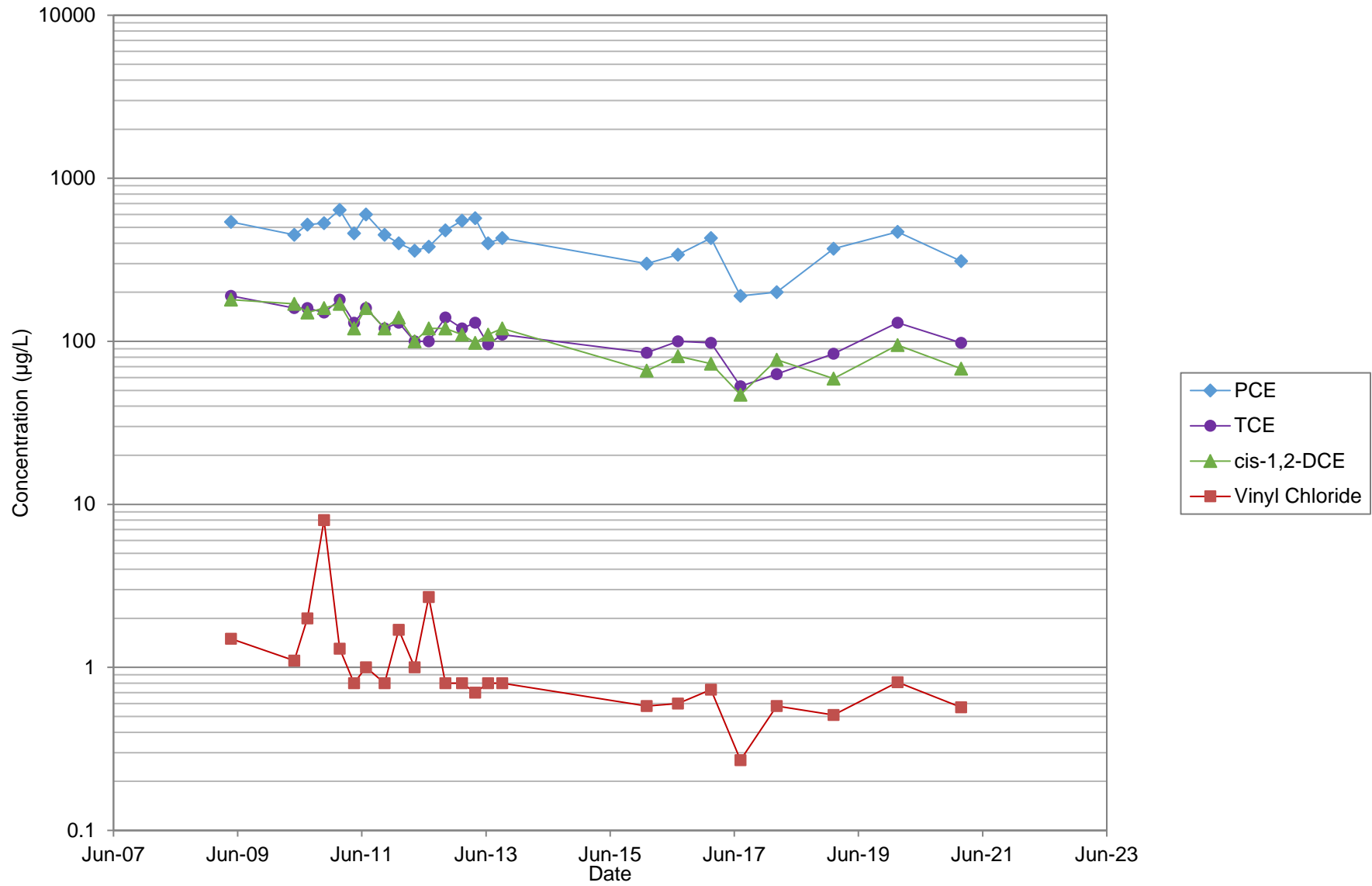


# LAI-MW4

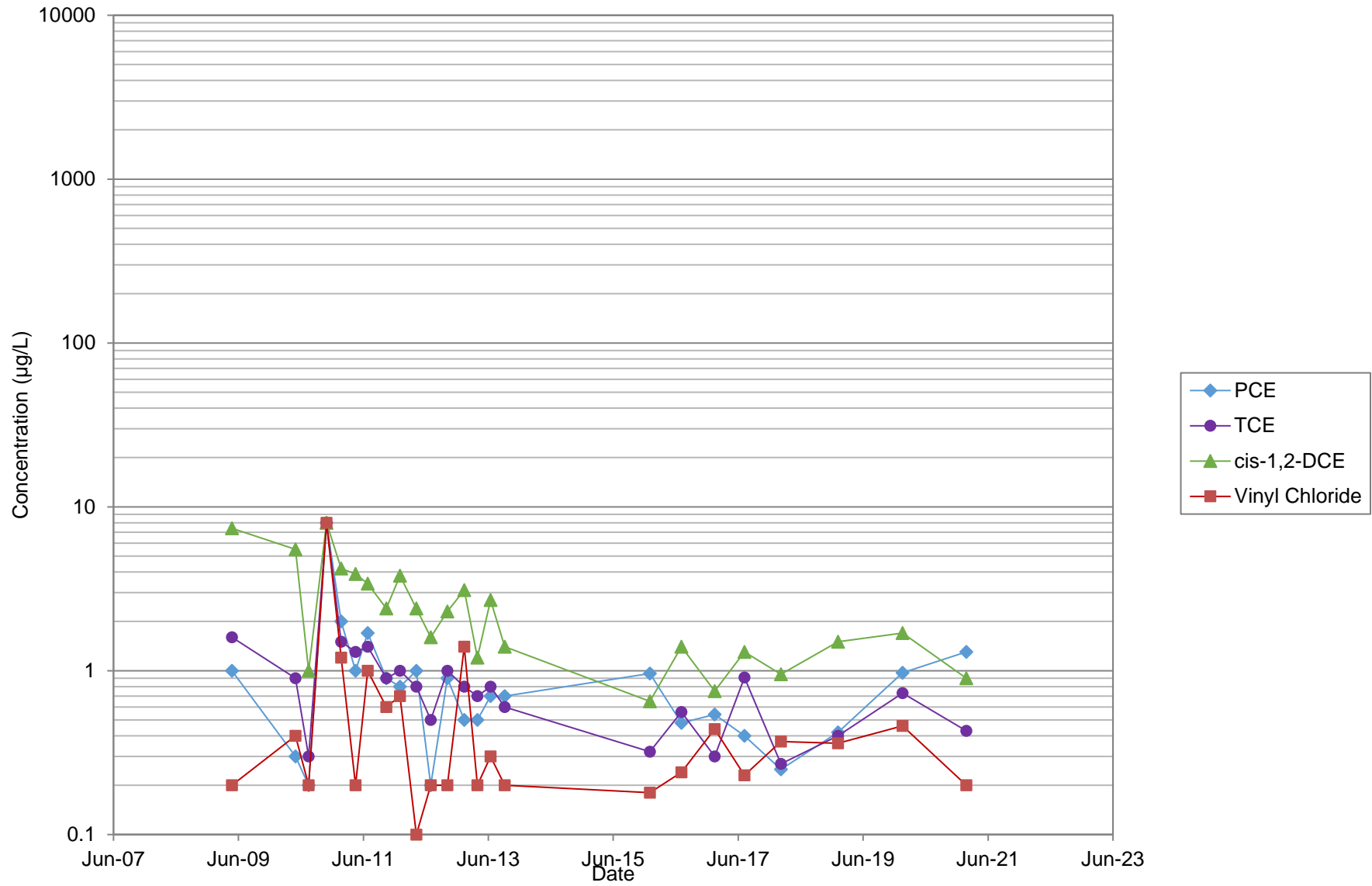




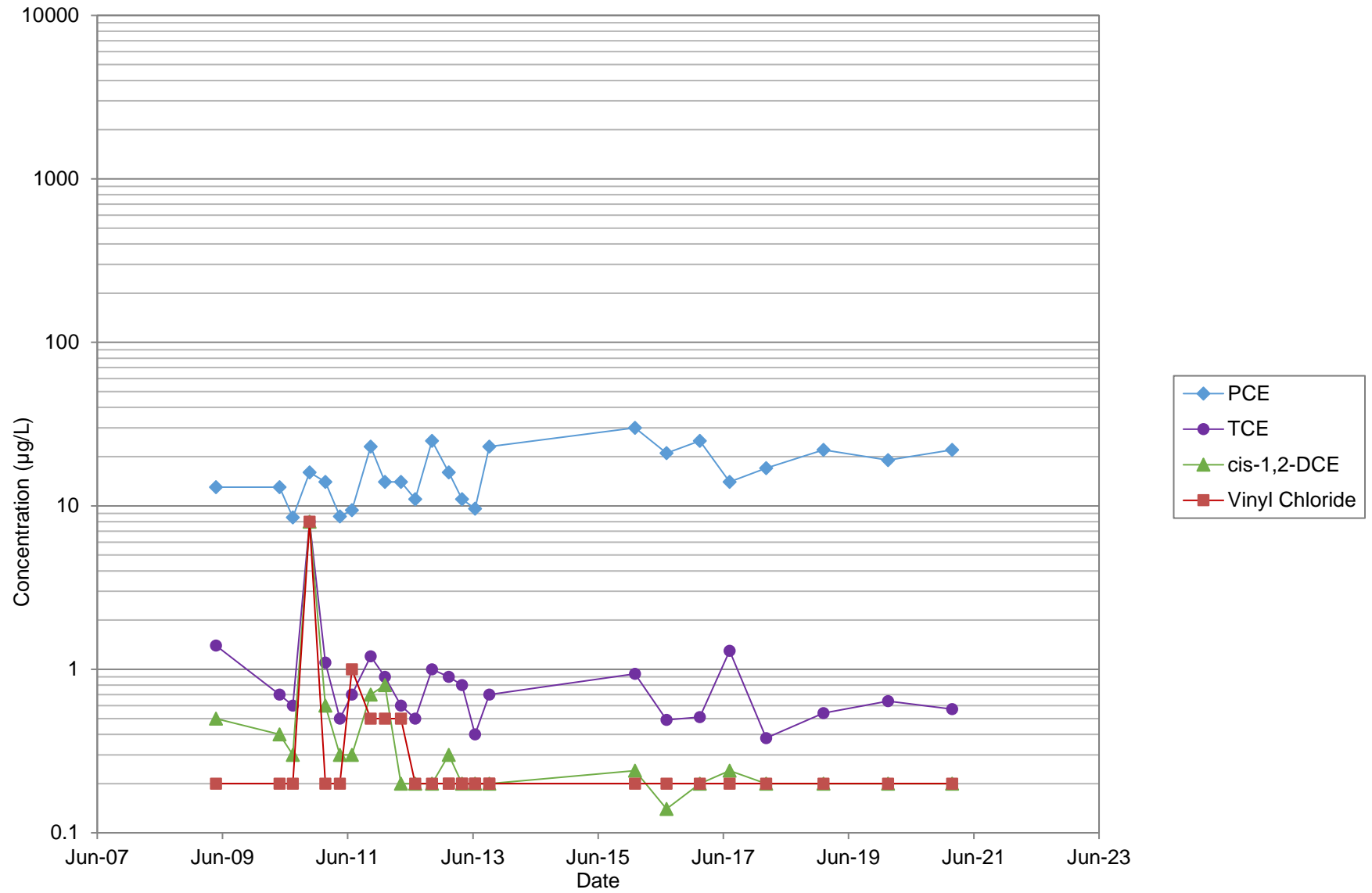
# MW-13



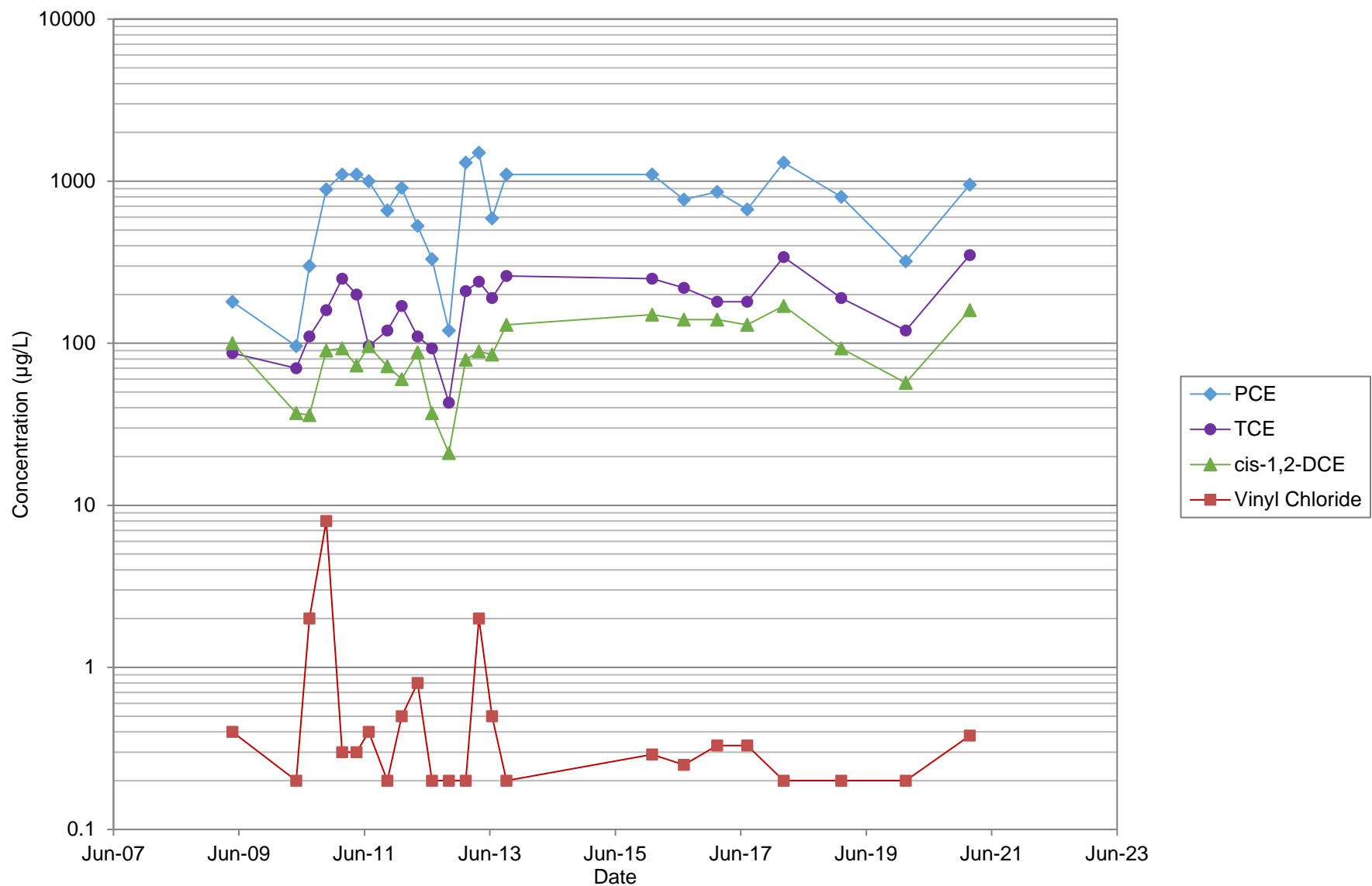
# MW-2



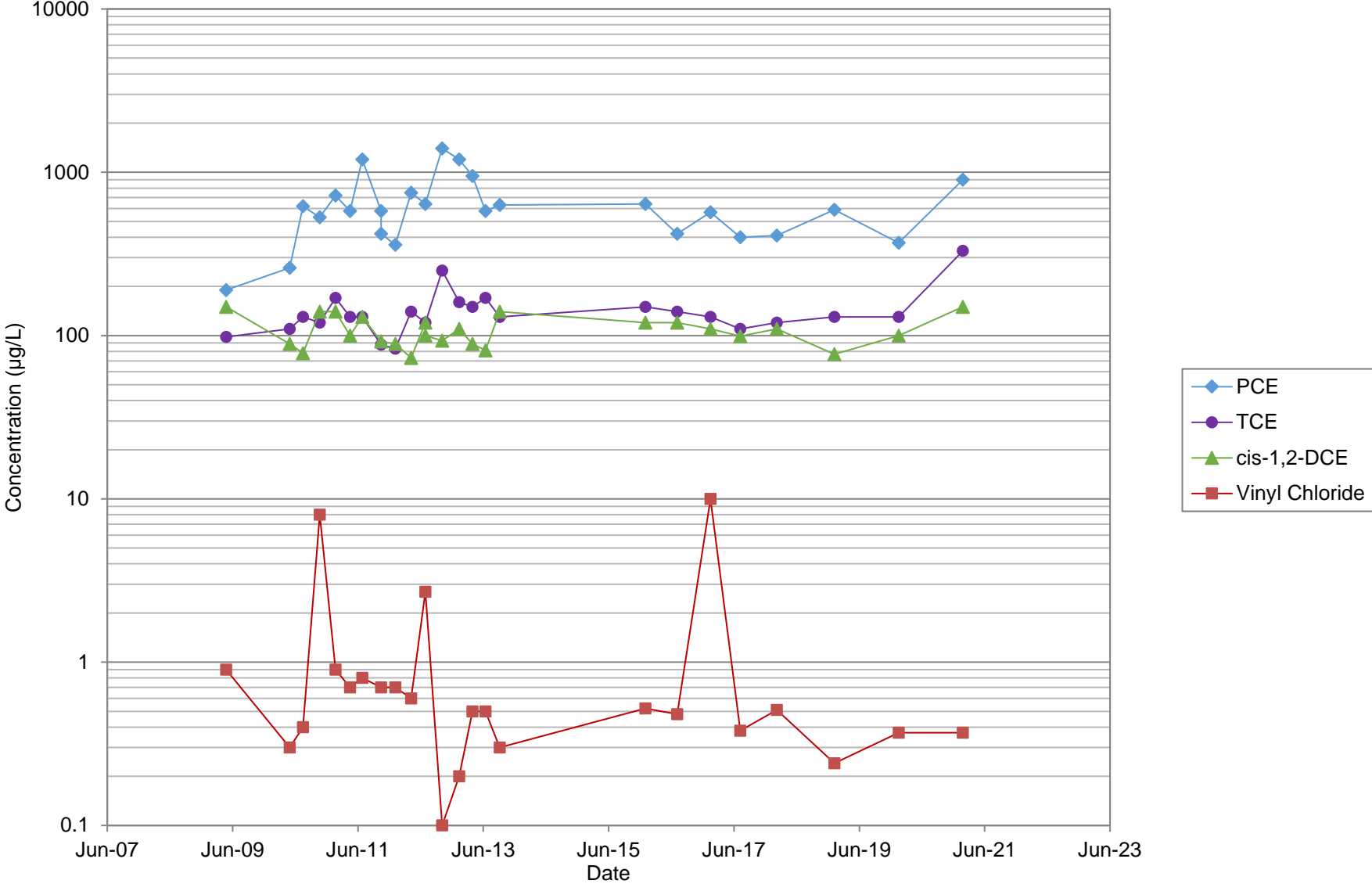
# RNS-MW2



# RNS-MW6-42.5



# RNS-MW6-52.5



# **January 2021 Laboratory Data Package**

## ANALYTICAL REPORT

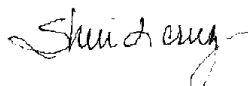
Eurofins TestAmerica, Seattle  
5755 8th Street East  
Tacoma, WA 98424  
Tel: (253)922-2310

Laboratory Job ID: 580-100752-1  
Client Project/Site: Sauro's

**For:**

Landau & Associates, Inc.  
2107 South C Street  
Tacoma, Washington 98402

Attn: Sierra Mott



*Authorized for release by:*  
2/11/2021 2:30:26 PM

Sheri Cruz, Project Manager I  
(253)922-2310  
[Sheri.Cruz@Eurofinset.com](mailto:Sheri.Cruz@Eurofinset.com)

### LINKS

Review your project  
results through  
**TotalAccess**

Have a Question?



Visit us at:

[www.eurofinsus.com/Env](http://www.eurofinsus.com/Env)

*The test results in this report meet all 2003 NELAC, 2009 TNI, and 2016 TNI requirements for accredited parameters, exceptions are noted in this report. This report may not be reproduced except in full, and with written approval from the laboratory. For questions please contact the Project Manager at the e-mail address or telephone number listed on this page.*

*This report has been electronically signed and authorized by the signatory. Electronic signature is intended to be the legally binding equivalent of a traditionally handwritten signature.*

*Results relate only to the items tested and the sample(s) as received by the laboratory.*



# Table of Contents

Cover Page . . . . .	1
Table of Contents . . . . .	2
Case Narrative . . . . .	3
Definitions . . . . .	4
Sample Summary . . . . .	5
Chain of Custody . . . . .	6
Receipt Checklists . . . . .	9
Client Sample Results . . . . .	11
QC Sample Results . . . . .	20
Chronicle . . . . .	27
Certification Summary . . . . .	31

# Case Narrative

Client: Landau & Associates, Inc.  
Project/Site: Sauro's

Job ID: 580-100752-1

---

## Job ID: 580-100752-1

---

### Laboratory: Eurofins TestAmerica, Seattle

#### Narrative

---

#### Job Narrative 580-100752-1

#### Comments

No additional comments.

#### Receipt

The samples were received on 1/28/2021 11:00 AM; the samples arrived in good condition, and where required, properly preserved and on ice. The temperatures of the 2 coolers at receipt time were 4.5° C and 5.8° C.

#### GC/MS VOA

Method 8260C LL: The method blank for analytical batch 580-349601 contained Tetrachloroethene above the reporting limit (RL). Associated samples were not re-analyzed because results were greater than 10X the value found in the method blank.

Method 8260C LL: The following samples were diluted to bring the concentration of target analytes within the calibration range: LAI-MW2-20210127 (580-100752-4), RNS-MW6-42.5-20210127 (580-100752-10), RNS-MW6-52.5-20210127 (580-100752-11) and MW13-20210127 (580-100752-12). Elevated reporting limits (RLs) are provided.

No additional analytical or quality issues were noted, other than those described above or in the Definitions/Glossary page.

#### GC VOA

No analytical or quality issues were noted, other than those described in the Definitions/Glossary page.

#### General Chemistry

Method 300.0: The matrix spike / matrix spike duplicate (MS/MSD) recoveries for analytical batch 580-348858 were outside control limits. Sample matrix interference and/or non-homogeneity are suspected because the associated laboratory control sample (LCS) recovery was within acceptance limits.

Method 300.0 Nitrates: The following samples were prepared outside of preparation holding time due received with less than half the holding time remaining and analyst oversight: LAI-MW4-20210127 (580-100752-2) and Dup1-20210127 (580-100752-3). Client confirmed on 1/29/21 to continue to run and report out of hold.

Method SM 4500 S2 D: The matrix spike / matrix spike duplicate (MS/MSD) recoveries for analytical batch 280-525263 were outside control limits. Sample matrix interference is suspected because the associated laboratory control sample (LCS) recovery was within acceptance limits.

No additional analytical or quality issues were noted, other than those described above or in the Definitions/Glossary page.

#### VOA Prep

No analytical or quality issues were noted, other than those described in the Definitions/Glossary page.

# Definitions/Glossary

Client: Landau & Associates, Inc.  
Project/Site: Sauro's

Job ID: 580-100752-1

## Qualifiers

### GC/MS VOA

Qualifier	Qualifier Description
B	Compound was found in the blank and sample.

### General Chemistry

Qualifier	Qualifier Description
F1	MS and/or MSD recovery exceeds control limits.
H	Sample was prepped or analyzed beyond the specified holding time

## Glossary

Abbreviation	These commonly used abbreviations may or may not be present in this report.
□	Listed under the "D" column to designate that the result is reported on a dry weight basis
%R	Percent Recovery
CFL	Contains Free Liquid
CFU	Colony Forming Unit
CNF	Contains No Free Liquid
DER	Duplicate Error Ratio (normalized absolute difference)
Dil Fac	Dilution Factor
DL	Detection Limit (DoD/DOE)
DL, RA, RE, IN	Indicates a Dilution, Re-analysis, Re-extraction, or additional Initial metals/anion analysis of the sample
DLC	Decision Level Concentration (Radiochemistry)
EDL	Estimated Detection Limit (Dioxin)
LOD	Limit of Detection (DoD/DOE)
LOQ	Limit of Quantitation (DoD/DOE)
MCL	EPA recommended "Maximum Contaminant Level"
MDA	Minimum Detectable Activity (Radiochemistry)
MDC	Minimum Detectable Concentration (Radiochemistry)
MDL	Method Detection Limit
ML	Minimum Level (Dioxin)
MPN	Most Probable Number
MQL	Method Quantitation Limit
NC	Not Calculated
ND	Not Detected at the reporting limit (or MDL or EDL if shown)
NEG	Negative / Absent
POS	Positive / Present
PQL	Practical Quantitation Limit
PRES	Presumptive
QC	Quality Control
RER	Relative Error Ratio (Radiochemistry)
RL	Reporting Limit or Requested Limit (Radiochemistry)
RPD	Relative Percent Difference, a measure of the relative difference between two points
TEF	Toxicity Equivalent Factor (Dioxin)
TEQ	Toxicity Equivalent Quotient (Dioxin)
TNTC	Too Numerous To Count

# Sample Summary

Client: Landau & Associates, Inc.  
Project/Site: Sauro's

Job ID: 580-100752-1

Lab Sample ID	Client Sample ID	Matrix	Collected	Received	Asset ID
580-100752-1	Tripblank-20210127	Water	01/27/21 00:01	01/28/21 11:00	
580-100752-2	LAI-MW4-20210127	Water	01/27/21 09:30	01/28/21 11:00	
580-100752-3	Dup1-20210127	Water	01/27/21 09:35	01/28/21 11:00	
580-100752-4	LAI-MW2-20210127	Water	01/27/21 11:30	01/28/21 11:00	
580-100752-5	LAI-MW1-20210127	Water	01/27/21 13:20	01/28/21 11:00	
580-100752-6	LAI-MW5-20210127	Water	01/27/21 14:30	01/28/21 11:00	
580-100752-7	RNS-MW2-20210127	Water	01/27/21 15:50	01/28/21 11:00	
580-100752-8	LAI-MW3-20210127	Water	01/27/21 16:45	01/28/21 11:00	
580-100752-9	MW2-20210127	Water	01/27/21 16:00	01/28/21 11:00	
580-100752-10	RNS-MW6-42.5-20210127	Water	01/27/21 18:30	01/28/21 11:00	
580-100752-11	RNS-MW6-52.5-20210127	Water	01/27/21 18:50	01/28/21 11:00	
580-100752-12	MW13-20210127	Water	01/27/21 17:50	01/28/21 11:00	



# Chain-of-Custody Record

Seattle/Edmonds (425) 778-0907  
 Tacoma (253) 926-2493  
 Spokane (509) 327-9737  
 Portland (503) 542-1080

Date 1/27/21  
 Page 1 of 1

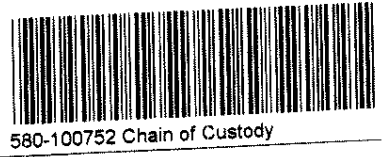
Turn-around Time:  
 Standard  
 Accelerated

Project Name SAURO'S Project No. 0094048.100.104  
 Project Location/Event Tacoma, WA / Jan 2021  
 Sampler's Name JEC/CAL  
 Project Contact SIERRA MOTT  
 Send Results To Dani Jorgensen, Sierra Mott

Sample I.D.	Date	Time	Matrix	No. of Containers	Testing Parameters	Observations/Comments
✓ Trip Blank - 20210127	—	—	AA	2	X	
✓ LA1-MW4-20210127	1/27/21	9:30	AA	8	X X X X X X X	Allow water samples to settle, collect aliquot from clear portion <input type="checkbox"/> NWTPH-Dx - Acid wash cleanup <input type="checkbox"/> - Silica gel cleanup <input type="checkbox"/> Dissolved metal samples were field filtered Other <u>Please note short hold time on nitrate/sulfate</u>
✓ Dup1-20210127	1/27/21	9:35	AA	8	X X X X X X X	
✓ LA1-MW2-20210127	1/27/21	11:30	AA	9	X X X X X X X	
✓ LA1-MW1-20210127	1/27/21	13:20	AA	9	X X X X X X X	
✓ LA1-MW5-20210127	1/27/21	14:30	AA	9	X X X X X X X	
✓ RNS-MW2-20210127	1/27/21	15:30	AA	7	X X X X X X X	
✓ LA1-MW3-20210127	1/27/21	16:45	AA	9	X X X X X X X	
✓ MW2-20210127	1/27/21	16:00	AA	9	X X X X X X X	
<del>LA1-MW6-20210127</del>	<del>—</del>	<del>—</del>	<del>AA</del>	<del>9</del>	<del>X X X X X X X</del>	
✓ RNS-MW6-42.5-20210127	1/27/21	18:30	AA	3	X	
✓ RNS-MW6-52.5-20210127	1/27/21	18:50	AA	9	X X X X X X X	
✓ MW13-20210127	1/27/21	17:50	AA	9	X X X X X X X	

VOCs 82600  
 PEX-175  
 CHLORIDE  
 NITRATE  
 SULFATE  
 TOC: SM 5310B

Therm. ID: 6 Cor: 5.8 ° Unc: 6.1  
 Cooler Dsc: LR FedEx: \_\_\_\_\_  
 Packing: Bub UPS: \_\_\_\_\_  
 Cust. Seal: Yes No Lab Cour: \_\_\_\_\_  
 Blue Ice, Yes, Dry, None Other: CO



580-100752 Chain of Custody

Loc: 580  
100752

Relinquished by  
 Signature [Signature]  
 Printed Name Simone Rodriguez  
 Company Landau Associates Inc  
 Date 1/28/2021 Time 11:00 AM

Received by  
 Signature [Signature]  
 Printed Name Ken Hobbs  
 Company TASE2  
 Date 1.28.21 Time 1:00

Relinquished by  
 Signature \_\_\_\_\_  
 Printed Name \_\_\_\_\_  
 Company \_\_\_\_\_  
 Date \_\_\_\_\_ Time \_\_\_\_\_

Received by  
 Signature \_\_\_\_\_  
 Printed Name \_\_\_\_\_  
 Company \_\_\_\_\_  
 Date \_\_\_\_\_ Time \_\_\_\_\_

**Eurofins TestAmerica, Seattle**

5755 8th Street East  
Tacoma, WA 98424  
Phone: 253-922-2310 Fax: 253-922-5047

**Chain of Custody Record**



<b>Client Information (Sub Contract Lab)</b>				Sampler:	Lab PM:	Carrier Tracking No(s):	COC No:																
Client Contact: Shipping/Receiving				Phone:	Cruz, Sheri L		580-86415.1																
Company: TestAmerica Laboratories, Inc.				E-Mail:	Sheri.Cruz@Eurofinset.com	State of Origin: Washington	Page: Page 1 of 2																
Address: 4955 Yarrow Street,				Accreditations Required (See note): State Program - Washington		Job #: 580-100752-1																	
City: Arvada		Due Date Requested: 2/10/2021		<b>Analysis Requested</b>				<b>Preservation Codes:</b> A - HCL M - Hexane B - NaOH N - None C - Zn Acetate O - AsNaO2 D - Nitric Acid P - Na2O4S E - NaHSO4 Q - Na2SO3 F - MeOH R - Na2S2O3 G - Amchlor S - H2SO4 H - Ascorbic Acid T - TSP Dodecahydrate I - Ice U - Acetone J - DI Water V - MCAA K - EDTA W - pH 4-5 L - EDA Z - other (specify)  Other:															
State, Zip: CO, 80002		TAT Requested (days):																					
Phone: 303-736-0100(Tel) 303-431-7171(Fax)		PO #:																					
Email:		WO #:																					
Project Name: Sauro's		Project #: 58009425		<b>Field Filtered Sample (Yes or No)</b>				<b>Total Number of containers</b>															
Site:		SSOW#:																					
<b>Sample Identification - Client ID (Lab ID)</b>				<b>Sample Date</b>		<b>Sample Time</b>		<b>Sample Type (C=comp, G=grab)</b>		<b>Matrix (W=water, S=solid, O=waste/oil, BT=Tissue, A=Air)</b>		<b>Field Filtered Sample (Yes or No)</b>		<b>Perform MS/MSD (Yes or No)</b>		<b>SM4500_S2_D1 Sulfide</b>		<b>RSK_175 (MOD) Local Method</b>		<b>Total Number of containers</b>		<b>Special Instructions/Note:</b>	
<b>Preservation Code:</b>																							
LAI-MW4-20210127 (580-100752-2)				1/27/21		09:30 Pacific		Water		Water				X X						3			
Dup1-20210127 (580-100752-3)				1/27/21		09:35 Pacific		Water		Water				X X						3			
LAI-MW2-20210127 (580-100752-4)				1/27/21		11:30 Pacific		Water		Water				X X						4			
LAI-MW1-20210127 (580-100752-5)				1/27/21		13:20 Pacific		Water		Water				X X						4			
LAI-MW5-20210127 (580-100752-6)				1/27/21		14:30 Pacific		Water		Water				X X						4			
RNS-MW2-20210127 (580-100752-7)				1/27/21		15:50 Pacific		Water		Water				X X						4			
LAI-MW3-20210127 (580-100752-8)				1/27/21		16:45 Pacific		Water		Water				X X						4			
MW2-20210127 (580-100752-9)				1/27/21		16:00 Pacific		Water		Water				X X						4			
RNS-MW6-52.5-20210127 (580-100752-11)				1/27/21		18:50 Pacific		Water		Water				X X						4			
<p>Note: Since laboratory accreditations are subject to change, Eurofins TestAmerica places the ownership of method, analyte &amp; accreditation compliance upon our subcontract laboratories. This sample shipment is forwarded under chain-of-custody. If the laboratory does not currently maintain accreditation in the State of Origin listed above for analysis/tests/matrix being analyzed, the samples must be shipped back to the Eurofins TestAmerica laboratory or other instructions will be provided. Any changes to accreditation status should be brought to Eurofins TestAmerica attention immediately. If all requested accreditations are current to date, return the signed Chain of Custody attesting to said compliance to Eurofins TestAmerica.</p>																							
<b>Possible Hazard Identification</b>												<b>Sample Disposal (A fee may be assessed if samples are retained longer than 1 month)</b>											
Unconfirmed												<input type="checkbox"/> Return To Client <input type="checkbox"/> Disposal By Lab <input type="checkbox"/> Archive For _____ Months											
Deliverable Requested: I, II, III, IV. Other (specify)						Primary Deliverable Rank: 2						Special Instructions/QC Requirements:											
Empty Kit Relinquished by:												Date:											
Relinquished by: <i>[Signature]</i>												Date/Time: 1-29-21											
Relinquished by: <i>[Signature]</i>												Date/Time: 1/30/21 0930											
Relinquished by:												Date/Time:											
Custody Seals Intact: <input type="checkbox"/> Yes <input type="checkbox"/> No												Custody Seal No.:											
												Cooler Temperature(s) °C and Other Remarks: 0.5°C, #9, #2, #10											



**Eurofins TestAmerica, Seattle**

5755 8th Street East  
Tacoma, WA 98424  
Phone: 253-922-2310 Fax: 253-922-5047

**Chain of Custody Record**



<b>Client Information (Sub Contract Lab)</b>		Sampler:		Lab PM: Cruz, Sheri L		Carrier Tracking No(s):		COC No: 580-86415.2																	
Client Contact: Shipping/Receiving		Phone:		E-Mail: Sheri.Cruz@Eurofinset.com		State of Origin: Washington		Page: Page 2 of 2																	
Company: TestAmerica Laboratories, Inc.		Address: 4955 Yarrow Street, City: Arvada State, Zip: CO, 80002		Due Date Requested: 2/10/2021		TAT Requested (days):		Accreditations Required (See note): State Program - Washington																	
Phone: 303-736-0100(Tel) 303-431-7171(Fax)		PO #:		Project #: 58009425		SSOW#:		Job #: 580-100752-1																	
Email:		WO #:		Project Name: Sauro's		Site:		<table border="1" style="width:100%; border-collapse: collapse;"> <tr> <th colspan="2">Analysis Requested</th> </tr> <tr> <td style="width:50%; text-align: center;">Field Filtered Sample (Yes or No)</td> <td style="width:50%; text-align: center;">Total Number of Containers</td> </tr> <tr> <td style="text-align: center;">Perform MS/MSD (Yes or No)</td> <td></td> </tr> <tr> <td style="text-align: center;">SM4500_S2_D1 Sulfide</td> <td></td> </tr> <tr> <td style="text-align: center;">RSK_175 (MOD) Local Method</td> <td></td> </tr> </table>		Analysis Requested		Field Filtered Sample (Yes or No)	Total Number of Containers	Perform MS/MSD (Yes or No)		SM4500_S2_D1 Sulfide		RSK_175 (MOD) Local Method							
Analysis Requested																									
Field Filtered Sample (Yes or No)	Total Number of Containers																								
Perform MS/MSD (Yes or No)																									
SM4500_S2_D1 Sulfide																									
RSK_175 (MOD) Local Method																									
Project Name: Sauro's		Project #: 58009425		SSOW#:		<table border="1" style="width:100%; border-collapse: collapse;"> <tr> <th colspan="2">Preservation Codes:</th> </tr> <tr> <td style="width:50%;">A - HCL B - NaOH C - Zn Acetate D - Nitric Acid E - NaHSO4 F - MeOH G - Amchlor H - Ascorbic Acid I - Ice J - DI Water K - EDTA L - EDA</td> <td style="width:50%;">M - Hexane N - None O - AsNaO2 P - Na2O4S Q - Na2SO3 R - Na2S2O3 S - H2SO4 T - TSP Dodecahydrate U - Acetone V - MCAA W - pH 4-5 Z - other (specify)</td> </tr> <tr> <td colspan="2">Other:</td> </tr> </table>		Preservation Codes:		A - HCL B - NaOH C - Zn Acetate D - Nitric Acid E - NaHSO4 F - MeOH G - Amchlor H - Ascorbic Acid I - Ice J - DI Water K - EDTA L - EDA	M - Hexane N - None O - AsNaO2 P - Na2O4S Q - Na2SO3 R - Na2S2O3 S - H2SO4 T - TSP Dodecahydrate U - Acetone V - MCAA W - pH 4-5 Z - other (specify)	Other:													
Preservation Codes:																									
A - HCL B - NaOH C - Zn Acetate D - Nitric Acid E - NaHSO4 F - MeOH G - Amchlor H - Ascorbic Acid I - Ice J - DI Water K - EDTA L - EDA	M - Hexane N - None O - AsNaO2 P - Na2O4S Q - Na2SO3 R - Na2S2O3 S - H2SO4 T - TSP Dodecahydrate U - Acetone V - MCAA W - pH 4-5 Z - other (specify)																								
Other:																									
<table border="1" style="width:100%; border-collapse: collapse;"> <tr> <th>Sample Identification - Client ID (Lab ID)</th> <th>Sample Date</th> <th>Sample Time</th> <th>Sample Type (C=Comp, G=grab)</th> <th>Matrix (W=water, S=solid, O=waste/oil, BT=Tissue, A=Air)</th> <th>Field Filtered Sample (Yes or No)</th> <th>Perform MS/MSD (Yes or No)</th> <th>SM4500_S2_D1 Sulfide</th> <th>RSK_175 (MOD) Local Method</th> <th>Total Number of Containers</th> <th>Special Instructions/Note:</th> </tr> <tr> <td>MW13-20210127 (580-100752-12)</td> <td>1/27/21</td> <td>17:50 Pacific</td> <td></td> <td>Water</td> <td>X</td> <td>X</td> <td>X</td> <td>X</td> <td>4</td> <td></td> </tr> </table>		Sample Identification - Client ID (Lab ID)	Sample Date	Sample Time	Sample Type (C=Comp, G=grab)	Matrix (W=water, S=solid, O=waste/oil, BT=Tissue, A=Air)	Field Filtered Sample (Yes or No)	Perform MS/MSD (Yes or No)	SM4500_S2_D1 Sulfide	RSK_175 (MOD) Local Method	Total Number of Containers	Special Instructions/Note:	MW13-20210127 (580-100752-12)	1/27/21	17:50 Pacific		Water	X	X	X	X	4		<p>Note: Since laboratory accreditations are subject to change, Eurofins TestAmerica places the ownership of method, analyte &amp; accreditation compliance upon out subcontract laboratories. This sample shipment is forwarded under chain-of-custody. If the laboratory does not currently maintain accreditation in the State of Origin listed above for analysis/tests/matrix being analyzed, the samples must be shipped back to the Eurofins TestAmerica laboratory or other instructions will be provided. Any changes to accreditation status should be brought to Eurofins TestAmerica attention immediately. If all requested accreditations are current to date, return the signed Chain of Custody attesting to said compliance to Eurofins TestAmerica.</p>	
Sample Identification - Client ID (Lab ID)	Sample Date	Sample Time	Sample Type (C=Comp, G=grab)	Matrix (W=water, S=solid, O=waste/oil, BT=Tissue, A=Air)	Field Filtered Sample (Yes or No)	Perform MS/MSD (Yes or No)	SM4500_S2_D1 Sulfide	RSK_175 (MOD) Local Method	Total Number of Containers	Special Instructions/Note:															
MW13-20210127 (580-100752-12)	1/27/21	17:50 Pacific		Water	X	X	X	X	4																
<p><b>Possible Hazard Identification</b></p> <p>Unconfirmed</p>		<p>Deliverable Requested: I, II, III, IV, Other (specify)</p>		<p>Primary Deliverable Rank: 2</p>		<p><b>Sample Disposal (A fee may be assessed if samples are retained longer than 1 month)</b></p> <p><input type="checkbox"/> Return To Client    <input type="checkbox"/> Disposal By Lab    <input type="checkbox"/> Archive For _____ Months</p>				<p>Special Instructions/QC Requirements:</p>															
<p>Empty Kit Relinquished by: _____</p>		<p>Date: _____</p>		<p>Time: _____</p>		<p>Method of Shipment: _____</p>				<p>Relinquished by: <i>[Signature]</i></p>															
<p>Relinquished by: _____</p>		<p>Date/Time: 1-29-21</p>		<p>Company: TASEA</p>		<p>Received by: <i>[Signature]</i></p>		<p>Date/Time: 1/30/21 09:30</p>		<p>Company: EPA</p>															
<p>Relinquished by: _____</p>		<p>Date/Time: _____</p>		<p>Company: _____</p>		<p>Received by: _____</p>		<p>Date/Time: _____</p>		<p>Company: _____</p>															
<p>Custody Seals Intact: <input type="checkbox"/> Yes <input type="checkbox"/> No</p>		<p>Custody Seal No.: _____</p>		<p>Cooler Temperature(s) °C and Other Remarks: 1.5°C, #9, 10, 11, 12, 13, 14, 15</p>																					

Page 8 of 32

2/11/2021



# Login Sample Receipt Checklist

Client: Landau & Associates, Inc.

Job Number: 580-100752-1

**Login Number: 100752**

**List Source: Eurofins TestAmerica, Seattle**

**List Number: 1**

**Creator: Hobbs, Kenneth F**

Question	Answer	Comment
Radioactivity wasn't checked or is </= background as measured by a survey meter.	N/A	
The cooler's custody seal, if present, is intact.	True	
Sample custody seals, if present, are intact.	True	
The cooler or samples do not appear to have been compromised or tampered with.	True	
Samples were received on ice.	True	
Cooler Temperature is acceptable.	True	
Cooler Temperature is recorded.	True	
COC is present.	True	
COC is filled out in ink and legible.	True	
COC is filled out with all pertinent information.	True	
Is the Field Sampler's name present on COC?	True	
There are no discrepancies between the containers received and the COC.	True	
Samples are received within Holding Time (excluding tests with immediate HTs)	True	
Sample containers have legible labels.	True	
Containers are not broken or leaking.	True	
Sample collection date/times are provided.	True	
Appropriate sample containers are used.	True	
Sample bottles are completely filled.	True	
Sample Preservation Verified.	True	
There is sufficient vol. for all requested analyses, incl. any requested MS/MSDs	True	
Containers requiring zero headspace have no headspace or bubble is <6mm (1/4").	N/A	
Multiphasic samples are not present.	True	
Samples do not require splitting or compositing.	True	
Residual Chlorine Checked.	N/A	

# Login Sample Receipt Checklist

Client: Landau & Associates, Inc.

Job Number: 580-100752-1

**Login Number: 100752**

**List Number: 2**

**Creator: Cavalli, Haden G**

**List Source: Eurofins TestAmerica, Denver**

**List Creation: 01/30/21 01:24 PM**

Question	Answer	Comment
Radioactivity wasn't checked or is < /= background as measured by a survey meter.	True	
The cooler's custody seal, if present, is intact.	True	
Sample custody seals, if present, are intact.	True	
The cooler or samples do not appear to have been compromised or tampered with.	True	
Samples were received on ice.	True	
Cooler Temperature is acceptable.	True	
Cooler Temperature is recorded.	True	
COC is present.	True	
COC is filled out in ink and legible.	True	
COC is filled out with all pertinent information.	True	
Is the Field Sampler's name present on COC?	N/A	
There are no discrepancies between the containers received and the COC.	True	
Samples are received within Holding Time (excluding tests with immediate HTs)	True	
Sample containers have legible labels.	True	
Containers are not broken or leaking.	True	
Sample collection date/times are provided.	True	
Appropriate sample containers are used.	True	
Sample bottles are completely filled.	True	
Sample Preservation Verified.	N/A	
There is sufficient vol. for all requested analyses, incl. any requested MS/MSDs	True	
Containers requiring zero headspace have no headspace or bubble is < 6mm (1/4").	True	
Multiphasic samples are not present.	True	
Samples do not require splitting or compositing.	True	
Residual Chlorine Checked.	N/A	

# Client Sample Results

Client: Landau & Associates, Inc.  
Project/Site: Sauro's

Job ID: 580-100752-1

## Method: 8260C LL - Volatile Organic Compounds by GC/MS

**Client Sample ID: Tripblank-20210127**

**Date Collected: 01/27/21 00:01**

**Date Received: 01/28/21 11:00**

**Lab Sample ID: 580-100752-1**

**Matrix: Water**

Analyte	Result	Qualifier	RL	MDL	Unit	D	Prepared	Analyzed	Dil Fac
Vinyl chloride	ND		0.20		ug/L			02/06/21 09:36	1
cis-1,2-Dichloroethene	ND		0.20		ug/L			02/06/21 09:36	1
Trichloroethene	ND		0.20		ug/L			02/06/21 09:36	1
Tetrachloroethene	ND		0.20		ug/L			02/06/21 09:36	1

Surrogate	%Recovery	Qualifier	Limits	Prepared	Analyzed	Dil Fac
Toluene-d8 (Surr)	100		80 - 120		02/06/21 09:36	1
1,2-Dichloroethane-d4 (Surr)	97		80 - 120		02/06/21 09:36	1
4-Bromofluorobenzene (Surr)	102		80 - 120		02/06/21 09:36	1
Dibromofluoromethane (Surr)	108		80 - 120		02/06/21 09:36	1

**Client Sample ID: LAI-MW4-20210127**

**Date Collected: 01/27/21 09:30**

**Date Received: 01/28/21 11:00**

**Lab Sample ID: 580-100752-2**

**Matrix: Water**

Analyte	Result	Qualifier	RL	MDL	Unit	D	Prepared	Analyzed	Dil Fac
Vinyl chloride	1.4		0.20		ug/L			02/06/21 10:02	1
cis-1,2-Dichloroethene	2.7		0.20		ug/L			02/06/21 10:02	1
Trichloroethene	0.40		0.20		ug/L			02/06/21 10:02	1
Tetrachloroethene	ND		0.20		ug/L			02/06/21 10:02	1

Surrogate	%Recovery	Qualifier	Limits	Prepared	Analyzed	Dil Fac
Toluene-d8 (Surr)	96		80 - 120		02/06/21 10:02	1
1,2-Dichloroethane-d4 (Surr)	103		80 - 120		02/06/21 10:02	1
4-Bromofluorobenzene (Surr)	100		80 - 120		02/06/21 10:02	1
Dibromofluoromethane (Surr)	97		80 - 120		02/06/21 10:02	1

**Client Sample ID: Dup1-20210127**

**Date Collected: 01/27/21 09:35**

**Date Received: 01/28/21 11:00**

**Lab Sample ID: 580-100752-3**

**Matrix: Water**

Analyte	Result	Qualifier	RL	MDL	Unit	D	Prepared	Analyzed	Dil Fac
Vinyl chloride	1.3		0.20		ug/L			02/06/21 10:28	1
cis-1,2-Dichloroethene	2.5		0.20		ug/L			02/06/21 10:28	1
Trichloroethene	0.40		0.20		ug/L			02/06/21 10:28	1
Tetrachloroethene	ND		0.20		ug/L			02/06/21 10:28	1

Surrogate	%Recovery	Qualifier	Limits	Prepared	Analyzed	Dil Fac
Toluene-d8 (Surr)	99		80 - 120		02/06/21 10:28	1
1,2-Dichloroethane-d4 (Surr)	104		80 - 120		02/06/21 10:28	1
4-Bromofluorobenzene (Surr)	97		80 - 120		02/06/21 10:28	1
Dibromofluoromethane (Surr)	93		80 - 120		02/06/21 10:28	1

**Client Sample ID: LAI-MW2-20210127**

**Date Collected: 01/27/21 11:30**

**Date Received: 01/28/21 11:00**

**Lab Sample ID: 580-100752-4**

**Matrix: Water**

Analyte	Result	Qualifier	RL	MDL	Unit	D	Prepared	Analyzed	Dil Fac
Vinyl chloride	0.89		0.20		ug/L			02/06/21 10:54	1

Surrogate	%Recovery	Qualifier	Limits	Prepared	Analyzed	Dil Fac
Toluene-d8 (Surr)	100		80 - 120		02/06/21 10:54	1
1,2-Dichloroethane-d4 (Surr)	98		80 - 120		02/06/21 10:54	1
4-Bromofluorobenzene (Surr)	95		80 - 120		02/06/21 10:54	1

Eurofins TestAmerica, Seattle

# Client Sample Results

Client: Landau & Associates, Inc.  
Project/Site: Sauro's

Job ID: 580-100752-1

## Method: 8260C LL - Volatile Organic Compounds by GC/MS (Continued)

**Client Sample ID: LAI-MW2-20210127**

**Date Collected: 01/27/21 11:30**

**Date Received: 01/28/21 11:00**

**Lab Sample ID: 580-100752-4**

**Matrix: Water**

Surrogate	%Recovery	Qualifier	Limits	Prepared	Analyzed	Dil Fac
Dibromofluoromethane (Surr)	94		80 - 120		02/06/21 10:54	1

**Client Sample ID: LAI-MW1-20210127**

**Date Collected: 01/27/21 13:20**

**Date Received: 01/28/21 11:00**

**Lab Sample ID: 580-100752-5**

**Matrix: Water**

Analyte	Result	Qualifier	RL	MDL	Unit	D	Prepared	Analyzed	Dil Fac
Vinyl chloride	ND		0.20		ug/L			02/06/21 11:45	1
cis-1,2-Dichloroethene	ND		0.20		ug/L			02/06/21 11:45	1
Trichloroethene	ND		0.20		ug/L			02/06/21 11:45	1
Tetrachloroethene	ND		0.20		ug/L			02/06/21 11:45	1

Surrogate	%Recovery	Qualifier	Limits	Prepared	Analyzed	Dil Fac
Toluene-d8 (Surr)	99		80 - 120		02/06/21 11:45	1
1,2-Dichloroethane-d4 (Surr)	99		80 - 120		02/06/21 11:45	1
4-Bromofluorobenzene (Surr)	99		80 - 120		02/06/21 11:45	1
Dibromofluoromethane (Surr)	99		80 - 120		02/06/21 11:45	1

**Client Sample ID: LAI-MW5-20210127**

**Date Collected: 01/27/21 14:30**

**Date Received: 01/28/21 11:00**

**Lab Sample ID: 580-100752-6**

**Matrix: Water**

Analyte	Result	Qualifier	RL	MDL	Unit	D	Prepared	Analyzed	Dil Fac
Vinyl chloride	ND		0.20		ug/L			02/06/21 12:11	1
cis-1,2-Dichloroethene	ND		0.20		ug/L			02/06/21 12:11	1
Trichloroethene	ND		0.20		ug/L			02/06/21 12:11	1
Tetrachloroethene	ND		0.20		ug/L			02/06/21 12:11	1

Surrogate	%Recovery	Qualifier	Limits	Prepared	Analyzed	Dil Fac
Toluene-d8 (Surr)	97		80 - 120		02/06/21 12:11	1
1,2-Dichloroethane-d4 (Surr)	100		80 - 120		02/06/21 12:11	1
4-Bromofluorobenzene (Surr)	98		80 - 120		02/06/21 12:11	1
Dibromofluoromethane (Surr)	93		80 - 120		02/06/21 12:11	1

**Client Sample ID: RNS-MW2-20210127**

**Date Collected: 01/27/21 15:50**

**Date Received: 01/28/21 11:00**

**Lab Sample ID: 580-100752-7**

**Matrix: Water**

Analyte	Result	Qualifier	RL	MDL	Unit	D	Prepared	Analyzed	Dil Fac
Vinyl chloride	ND		0.20		ug/L			02/06/21 12:37	1
cis-1,2-Dichloroethene	ND		0.20		ug/L			02/06/21 12:37	1
<b>Trichloroethene</b>	<b>0.57</b>		0.20		ug/L			02/06/21 12:37	1
<b>Tetrachloroethene</b>	<b>22</b>		0.20		ug/L			02/06/21 12:37	1

Surrogate	%Recovery	Qualifier	Limits	Prepared	Analyzed	Dil Fac
Toluene-d8 (Surr)	98		80 - 120		02/06/21 12:37	1
1,2-Dichloroethane-d4 (Surr)	103		80 - 120		02/06/21 12:37	1
4-Bromofluorobenzene (Surr)	94		80 - 120		02/06/21 12:37	1
Dibromofluoromethane (Surr)	92		80 - 120		02/06/21 12:37	1

Eurofins TestAmerica, Seattle

# Client Sample Results

Client: Landau & Associates, Inc.  
Project/Site: Sauro's

Job ID: 580-100752-1

## Method: 8260C LL - Volatile Organic Compounds by GC/MS

**Client Sample ID: LAI-MW3-20210127**

**Date Collected: 01/27/21 16:45**

**Date Received: 01/28/21 11:00**

**Lab Sample ID: 580-100752-8**

**Matrix: Water**

Analyte	Result	Qualifier	RL	MDL	Unit	D	Prepared	Analyzed	Dil Fac
Vinyl chloride	ND		0.20		ug/L			02/06/21 13:02	1
<b>cis-1,2-Dichloroethene</b>	<b>34</b>		0.20		ug/L			02/06/21 13:02	1
<b>Trichloroethene</b>	<b>36</b>		0.20		ug/L			02/06/21 13:02	1
<b>Tetrachloroethene</b>	<b>83</b>		0.20		ug/L			02/06/21 13:02	1

Surrogate	%Recovery	Qualifier	Limits	Prepared	Analyzed	Dil Fac
<i>Toluene-d8 (Surr)</i>	99		80 - 120		02/06/21 13:02	1
<i>1,2-Dichloroethane-d4 (Surr)</i>	101		80 - 120		02/06/21 13:02	1
<i>4-Bromofluorobenzene (Surr)</i>	95		80 - 120		02/06/21 13:02	1
<i>Dibromofluoromethane (Surr)</i>	94		80 - 120		02/06/21 13:02	1

**Client Sample ID: MW2-20210127**

**Date Collected: 01/27/21 16:00**

**Date Received: 01/28/21 11:00**

**Lab Sample ID: 580-100752-9**

**Matrix: Water**

Analyte	Result	Qualifier	RL	MDL	Unit	D	Prepared	Analyzed	Dil Fac
Vinyl chloride	ND		0.20		ug/L			02/06/21 13:28	1
<b>cis-1,2-Dichloroethene</b>	<b>0.90</b>		0.20		ug/L			02/06/21 13:28	1
<b>Trichloroethene</b>	<b>0.43</b>		0.20		ug/L			02/06/21 13:28	1
<b>Tetrachloroethene</b>	<b>1.3</b>		0.20		ug/L			02/06/21 13:28	1

Surrogate	%Recovery	Qualifier	Limits	Prepared	Analyzed	Dil Fac
<i>Toluene-d8 (Surr)</i>	100		80 - 120		02/06/21 13:28	1
<i>1,2-Dichloroethane-d4 (Surr)</i>	104		80 - 120		02/06/21 13:28	1
<i>4-Bromofluorobenzene (Surr)</i>	95		80 - 120		02/06/21 13:28	1
<i>Dibromofluoromethane (Surr)</i>	95		80 - 120		02/06/21 13:28	1

**Client Sample ID: RNS-MW6-42.5-20210127**

**Date Collected: 01/27/21 18:30**

**Date Received: 01/28/21 11:00**

**Lab Sample ID: 580-100752-10**

**Matrix: Water**

Analyte	Result	Qualifier	RL	MDL	Unit	D	Prepared	Analyzed	Dil Fac
<b>Vinyl chloride</b>	<b>0.38</b>		0.20		ug/L			02/06/21 13:54	1

Surrogate	%Recovery	Qualifier	Limits	Prepared	Analyzed	Dil Fac
<i>Toluene-d8 (Surr)</i>	97		80 - 120		02/06/21 13:54	1
<i>1,2-Dichloroethane-d4 (Surr)</i>	100		80 - 120		02/06/21 13:54	1
<i>4-Bromofluorobenzene (Surr)</i>	95		80 - 120		02/06/21 13:54	1
<i>Dibromofluoromethane (Surr)</i>	91		80 - 120		02/06/21 13:54	1

**Client Sample ID: RNS-MW6-52.5-20210127**

**Date Collected: 01/27/21 18:50**

**Date Received: 01/28/21 11:00**

**Lab Sample ID: 580-100752-11**

**Matrix: Water**

Analyte	Result	Qualifier	RL	MDL	Unit	D	Prepared	Analyzed	Dil Fac
<b>Vinyl chloride</b>	<b>0.37</b>		0.20		ug/L			02/06/21 14:20	1

Surrogate	%Recovery	Qualifier	Limits	Prepared	Analyzed	Dil Fac
<i>Toluene-d8 (Surr)</i>	97		80 - 120		02/06/21 14:20	1
<i>1,2-Dichloroethane-d4 (Surr)</i>	102		80 - 120		02/06/21 14:20	1
<i>4-Bromofluorobenzene (Surr)</i>	94		80 - 120		02/06/21 14:20	1
<i>Dibromofluoromethane (Surr)</i>	92		80 - 120		02/06/21 14:20	1

Eurolins TestAmerica, Seattle

# Client Sample Results

Client: Landau & Associates, Inc.  
Project/Site: Sauro's

Job ID: 580-100752-1

## Method: 8260C LL - Volatile Organic Compounds by GC/MS

**Client Sample ID: MW13-20210127**

**Date Collected: 01/27/21 17:50**

**Date Received: 01/28/21 11:00**

**Lab Sample ID: 580-100752-12**

**Matrix: Water**

Analyte	Result	Qualifier	RL	MDL	Unit	D	Prepared	Analyzed	Dil Fac
Vinyl chloride	0.57		0.20		ug/L			02/06/21 14:45	1
cis-1,2-Dichloroethene	68		0.20		ug/L			02/06/21 14:45	1
Trichloroethene	98		0.20		ug/L			02/06/21 14:45	1
Surrogate	%Recovery	Qualifier	Limits				Prepared	Analyzed	Dil Fac
Toluene-d8 (Surr)	101		80 - 120					02/06/21 14:45	1
1,2-Dichloroethane-d4 (Surr)	100		80 - 120					02/06/21 14:45	1
4-Bromofluorobenzene (Surr)	93		80 - 120					02/06/21 14:45	1
Dibromofluoromethane (Surr)	95		80 - 120					02/06/21 14:45	1

# Client Sample Results

Client: Landau & Associates, Inc.  
Project/Site: Sauro's

Job ID: 580-100752-1

## Method: 8260C LL - Volatile Organic Compounds by GC/MS - DL

**Client Sample ID: LAI-MW2-20210127**

**Date Collected: 01/27/21 11:30**

**Date Received: 01/28/21 11:00**

**Lab Sample ID: 580-100752-4**

**Matrix: Water**

Analyte	Result	Qualifier	RL	MDL	Unit	D	Prepared	Analyzed	Dil Fac
cis-1,2-Dichloroethene	61		2.0		ug/L			02/10/21 14:40	10
Trichloroethene	83		2.0		ug/L			02/10/21 14:40	10
Tetrachloroethene	230	B	2.0		ug/L			02/10/21 14:40	10
Surrogate	%Recovery	Qualifier	Limits				Prepared	Analyzed	Dil Fac
Toluene-d8 (Surr)	96		80 - 120					02/10/21 14:40	10
1,2-Dichloroethane-d4 (Surr)	101		80 - 120					02/10/21 14:40	10
4-Bromofluorobenzene (Surr)	97		80 - 120					02/10/21 14:40	10
Dibromofluoromethane (Surr)	96		80 - 120					02/10/21 14:40	10

**Client Sample ID: RNS-MW6-42.5-20210127**

**Date Collected: 01/27/21 18:30**

**Date Received: 01/28/21 11:00**

**Lab Sample ID: 580-100752-10**

**Matrix: Water**

Analyte	Result	Qualifier	RL	MDL	Unit	D	Prepared	Analyzed	Dil Fac
cis-1,2-Dichloroethene	160		10		ug/L			02/10/21 15:06	50
Trichloroethene	350		10		ug/L			02/10/21 15:06	50
Tetrachloroethene	950	B	10		ug/L			02/10/21 15:06	50
Surrogate	%Recovery	Qualifier	Limits				Prepared	Analyzed	Dil Fac
Toluene-d8 (Surr)	98		80 - 120					02/10/21 15:06	50
1,2-Dichloroethane-d4 (Surr)	103		80 - 120					02/10/21 15:06	50
4-Bromofluorobenzene (Surr)	93		80 - 120					02/10/21 15:06	50
Dibromofluoromethane (Surr)	100		80 - 120					02/10/21 15:06	50

**Client Sample ID: RNS-MW6-52.5-20210127**

**Date Collected: 01/27/21 18:50**

**Date Received: 01/28/21 11:00**

**Lab Sample ID: 580-100752-11**

**Matrix: Water**

Analyte	Result	Qualifier	RL	MDL	Unit	D	Prepared	Analyzed	Dil Fac
cis-1,2-Dichloroethene	150		10		ug/L			02/10/21 15:31	50
Trichloroethene	330		10		ug/L			02/10/21 15:31	50
Tetrachloroethene	900	B	10		ug/L			02/10/21 15:31	50
Surrogate	%Recovery	Qualifier	Limits				Prepared	Analyzed	Dil Fac
Toluene-d8 (Surr)	96		80 - 120					02/10/21 15:31	50
1,2-Dichloroethane-d4 (Surr)	103		80 - 120					02/10/21 15:31	50
4-Bromofluorobenzene (Surr)	92		80 - 120					02/10/21 15:31	50
Dibromofluoromethane (Surr)	100		80 - 120					02/10/21 15:31	50

**Client Sample ID: MW13-20210127**

**Date Collected: 01/27/21 17:50**

**Date Received: 01/28/21 11:00**

**Lab Sample ID: 580-100752-12**

**Matrix: Water**

Analyte	Result	Qualifier	RL	MDL	Unit	D	Prepared	Analyzed	Dil Fac
Tetrachloroethene	310	B	2.0		ug/L			02/10/21 15:57	10
Surrogate	%Recovery	Qualifier	Limits				Prepared	Analyzed	Dil Fac
Toluene-d8 (Surr)	95		80 - 120					02/10/21 15:57	10
1,2-Dichloroethane-d4 (Surr)	104		80 - 120					02/10/21 15:57	10
4-Bromofluorobenzene (Surr)	96		80 - 120					02/10/21 15:57	10
Dibromofluoromethane (Surr)	96		80 - 120					02/10/21 15:57	10

Eurolins TestAmerica, Seattle

# Client Sample Results

Client: Landau & Associates, Inc.  
Project/Site: Sauro's

Job ID: 580-100752-1

## Method: RSK-175 - Dissolved Gases (GC)

**Client Sample ID: LAI-MW4-20210127**

**Date Collected: 01/27/21 09:30**

**Date Received: 01/28/21 11:00**

**Lab Sample ID: 580-100752-2**

**Matrix: Water**

Analyte	Result	Qualifier	RL	MDL	Unit	D	Prepared	Analyzed	Dil Fac
Methane	1.0		0.0050		mg/L			02/01/21 13:58	1
Ethylene	ND		0.0050		mg/L			02/01/21 13:58	1
Ethane	ND		0.0050		mg/L			02/01/21 13:58	1
Acetylene	ND		0.0050		mg/L			02/01/21 13:58	1

**Client Sample ID: Dup1-20210127**

**Date Collected: 01/27/21 09:35**

**Date Received: 01/28/21 11:00**

**Lab Sample ID: 580-100752-3**

**Matrix: Water**

Analyte	Result	Qualifier	RL	MDL	Unit	D	Prepared	Analyzed	Dil Fac
Methane	1.0		0.0050		mg/L			02/01/21 14:10	1
Ethylene	ND		0.0050		mg/L			02/01/21 14:10	1
Ethane	ND		0.0050		mg/L			02/01/21 14:10	1
Acetylene	ND		0.0050		mg/L			02/01/21 14:10	1

**Client Sample ID: LAI-MW2-20210127**

**Date Collected: 01/27/21 11:30**

**Date Received: 01/28/21 11:00**

**Lab Sample ID: 580-100752-4**

**Matrix: Water**

Analyte	Result	Qualifier	RL	MDL	Unit	D	Prepared	Analyzed	Dil Fac
Methane	0.0063		0.0050		mg/L			02/01/21 14:34	1
Ethylene	ND		0.0050		mg/L			02/01/21 14:34	1
Ethane	ND		0.0050		mg/L			02/01/21 14:34	1
Acetylene	ND		0.0050		mg/L			02/01/21 14:34	1

**Client Sample ID: LAI-MW1-20210127**

**Date Collected: 01/27/21 13:20**

**Date Received: 01/28/21 11:00**

**Lab Sample ID: 580-100752-5**

**Matrix: Water**

Analyte	Result	Qualifier	RL	MDL	Unit	D	Prepared	Analyzed	Dil Fac
Methane	ND		0.0050		mg/L			02/01/21 14:59	1
Ethylene	ND		0.0050		mg/L			02/01/21 14:59	1
Ethane	ND		0.0050		mg/L			02/01/21 14:59	1
Acetylene	ND		0.0050		mg/L			02/01/21 14:59	1

**Client Sample ID: LAI-MW5-20210127**

**Date Collected: 01/27/21 14:30**

**Date Received: 01/28/21 11:00**

**Lab Sample ID: 580-100752-6**

**Matrix: Water**

Analyte	Result	Qualifier	RL	MDL	Unit	D	Prepared	Analyzed	Dil Fac
Methane	10		0.0050		mg/L			02/01/21 15:11	1
Ethylene	ND		0.0050		mg/L			02/01/21 15:11	1
Ethane	ND		0.0050		mg/L			02/01/21 15:11	1
Acetylene	ND		0.0050		mg/L			02/01/21 15:11	1

**Client Sample ID: RNS-MW2-20210127**

**Date Collected: 01/27/21 15:50**

**Date Received: 01/28/21 11:00**

**Lab Sample ID: 580-100752-7**

**Matrix: Water**

Analyte	Result	Qualifier	RL	MDL	Unit	D	Prepared	Analyzed	Dil Fac
Methane	ND		0.0050		mg/L			02/01/21 15:24	1
Ethylene	ND		0.0050		mg/L			02/01/21 15:24	1
Ethane	ND		0.0050		mg/L			02/01/21 15:24	1
Acetylene	ND		0.0050		mg/L			02/01/21 15:24	1

Eurofins TestAmerica, Seattle

# Client Sample Results

Client: Landau & Associates, Inc.  
Project/Site: Sauro's

Job ID: 580-100752-1

## Method: RSK-175 - Dissolved Gases (GC)

Client Sample ID: LAI-MW3-20210127

Date Collected: 01/27/21 16:45

Date Received: 01/28/21 11:00

Lab Sample ID: 580-100752-8

Matrix: Water

Analyte	Result	Qualifier	RL	MDL	Unit	D	Prepared	Analyzed	Dil Fac
Methane	ND		0.0050		mg/L			02/01/21 15:36	1
Ethylene	ND		0.0050		mg/L			02/01/21 15:36	1
Ethane	ND		0.0050		mg/L			02/01/21 15:36	1
Acetylene	ND		0.0050		mg/L			02/01/21 15:36	1

Client Sample ID: MW2-20210127

Date Collected: 01/27/21 16:00

Date Received: 01/28/21 11:00

Lab Sample ID: 580-100752-9

Matrix: Water

Analyte	Result	Qualifier	RL	MDL	Unit	D	Prepared	Analyzed	Dil Fac
Methane	0.30		0.0050		mg/L			02/01/21 15:48	1
Ethylene	ND		0.0050		mg/L			02/01/21 15:48	1
Ethane	ND		0.0050		mg/L			02/01/21 15:48	1
Acetylene	ND		0.0050		mg/L			02/01/21 15:48	1

Client Sample ID: RNS-MW6-52.5-20210127

Date Collected: 01/27/21 18:50

Date Received: 01/28/21 11:00

Lab Sample ID: 580-100752-11

Matrix: Water

Analyte	Result	Qualifier	RL	MDL	Unit	D	Prepared	Analyzed	Dil Fac
Methane	0.16		0.0050		mg/L			02/01/21 16:00	1
Ethylene	ND		0.0050		mg/L			02/01/21 16:00	1
Ethane	0.0051		0.0050		mg/L			02/01/21 16:00	1
Acetylene	ND		0.0050		mg/L			02/01/21 16:00	1

Client Sample ID: MW13-20210127

Date Collected: 01/27/21 17:50

Date Received: 01/28/21 11:00

Lab Sample ID: 580-100752-12

Matrix: Water

Analyte	Result	Qualifier	RL	MDL	Unit	D	Prepared	Analyzed	Dil Fac
Methane	ND		0.0050		mg/L			02/01/21 16:13	1
Ethylene	ND		0.0050		mg/L			02/01/21 16:13	1
Ethane	ND		0.0050		mg/L			02/01/21 16:13	1
Acetylene	ND		0.0050		mg/L			02/01/21 16:13	1

# Client Sample Results

Client: Landau & Associates, Inc.  
Project/Site: Sauro's

Job ID: 580-100752-1

## General Chemistry

**Client Sample ID: LAI-MW4-20210127**

**Date Collected: 01/27/21 09:30**

**Date Received: 01/28/21 11:00**

**Lab Sample ID: 580-100752-2**

**Matrix: Water**

Analyte	Result	Qualifier	RL	MDL	Unit	D	Prepared	Analyzed	Dil Fac
<b>Chloride</b>	<b>40</b>		1.5		mg/L			01/29/21 13:34	1
Nitrite as N	ND	H	0.40		mg/L			01/29/21 13:34	1
<b>Nitrate as N</b>	<b>0.68</b>	<b>H</b>	0.20		mg/L			01/29/21 13:34	1
<b>Sulfate</b>	<b>9.8</b>		1.5		mg/L			01/29/21 13:34	1
Sulfide	ND	F1	0.050		mg/L			02/02/21 15:04	1
<b>Total Organic Carbon</b>	<b>3.2</b>		1.5		mg/L			02/02/21 19:13	1

**Client Sample ID: Dup1-20210127**

**Date Collected: 01/27/21 09:35**

**Date Received: 01/28/21 11:00**

**Lab Sample ID: 580-100752-3**

**Matrix: Water**

Analyte	Result	Qualifier	RL	MDL	Unit	D	Prepared	Analyzed	Dil Fac
<b>Chloride</b>	<b>40</b>		1.5		mg/L			01/29/21 13:46	1
Nitrite as N	ND	H	0.40		mg/L			01/29/21 13:46	1
<b>Nitrate as N</b>	<b>0.61</b>	<b>H</b>	0.20		mg/L			01/29/21 13:46	1
<b>Sulfate</b>	<b>9.2</b>		1.5		mg/L			01/29/21 13:46	1
Sulfide	ND		0.050		mg/L			02/02/21 15:05	1
<b>Total Organic Carbon</b>	<b>3.5</b>		1.5		mg/L			02/02/21 20:15	1

**Client Sample ID: LAI-MW2-20210127**

**Date Collected: 01/27/21 11:30**

**Date Received: 01/28/21 11:00**

**Lab Sample ID: 580-100752-4**

**Matrix: Water**

Analyte	Result	Qualifier	RL	MDL	Unit	D	Prepared	Analyzed	Dil Fac
<b>Chloride</b>	<b>25</b>		1.5		mg/L			01/29/21 10:15	1
Nitrite as N	ND		0.40		mg/L			01/29/21 10:15	1
<b>Nitrate as N</b>	<b>0.54</b>		0.20		mg/L			01/29/21 10:15	1
<b>Sulfate</b>	<b>24</b>		1.5		mg/L			01/29/21 10:15	1
Sulfide	ND		0.050		mg/L			02/02/21 15:06	1
Total Organic Carbon	ND		1.5		mg/L			02/02/21 20:31	1

**Client Sample ID: LAI-MW1-20210127**

**Date Collected: 01/27/21 13:20**

**Date Received: 01/28/21 11:00**

**Lab Sample ID: 580-100752-5**

**Matrix: Water**

Analyte	Result	Qualifier	RL	MDL	Unit	D	Prepared	Analyzed	Dil Fac
<b>Chloride</b>	<b>65</b>		1.5		mg/L			01/29/21 11:26	1
Nitrite as N	ND		0.40		mg/L			01/29/21 11:26	1
<b>Nitrate as N</b>	<b>2.0</b>		0.20		mg/L			01/29/21 11:26	1
<b>Sulfate</b>	<b>23</b>		1.5		mg/L			01/29/21 11:26	1
Sulfide	ND		0.050		mg/L			02/02/21 15:07	1
Total Organic Carbon	ND		1.5		mg/L			02/02/21 20:46	1

**Client Sample ID: LAI-MW5-20210127**

**Date Collected: 01/27/21 14:30**

**Date Received: 01/28/21 11:00**

**Lab Sample ID: 580-100752-6**

**Matrix: Water**

Analyte	Result	Qualifier	RL	MDL	Unit	D	Prepared	Analyzed	Dil Fac
<b>Chloride</b>	<b>89</b>		1.5		mg/L			01/29/21 11:37	1
Nitrite as N	ND		0.40		mg/L			01/29/21 11:37	1
<b>Nitrate as N</b>	<b>0.60</b>		0.20		mg/L			01/29/21 11:37	1
<b>Sulfate</b>	<b>3.3</b>		1.5		mg/L			01/29/21 11:37	1
Sulfide	ND		0.050		mg/L			02/02/21 15:07	1
<b>Total Organic Carbon</b>	<b>7.3</b>		1.5		mg/L			02/02/21 21:33	1

Eurofins TestAmerica, Seattle

# Client Sample Results

Client: Landau & Associates, Inc.  
Project/Site: Sauro's

Job ID: 580-100752-1

## General Chemistry

**Client Sample ID: RNS-MW2-20210127**

**Date Collected: 01/27/21 15:50**

**Date Received: 01/28/21 11:00**

**Lab Sample ID: 580-100752-7**

**Matrix: Water**

Analyte	Result	Qualifier	RL	MDL	Unit	D	Prepared	Analyzed	Dil Fac
<b>Chloride</b>	<b>100</b>		15		mg/L			02/03/21 00:07	10
Nitrite as N	ND		0.40		mg/L			01/29/21 11:49	1
<b>Nitrate as N</b>	<b>3.9</b>		0.20		mg/L			01/29/21 11:49	1
<b>Sulfate</b>	<b>29</b>		1.5		mg/L			01/29/21 11:49	1
Sulfide	ND		0.050		mg/L			02/02/21 15:08	1
Total Organic Carbon	ND		1.5		mg/L			02/02/21 21:49	1

**Client Sample ID: LAI-MW3-20210127**

**Date Collected: 01/27/21 16:45**

**Date Received: 01/28/21 11:00**

**Lab Sample ID: 580-100752-8**

**Matrix: Water**

Analyte	Result	Qualifier	RL	MDL	Unit	D	Prepared	Analyzed	Dil Fac
<b>Chloride</b>	<b>26</b>		1.5		mg/L			01/29/21 12:12	1
Nitrite as N	ND		0.40		mg/L			01/29/21 12:12	1
<b>Nitrate as N</b>	<b>1.3</b>		0.20		mg/L			01/29/21 12:12	1
<b>Sulfate</b>	<b>27</b>		1.5		mg/L			01/29/21 12:12	1
Sulfide	ND		0.050		mg/L			02/02/21 15:09	1
<b>Total Organic Carbon</b>	<b>1.5</b>		1.5		mg/L			02/02/21 22:05	1

**Client Sample ID: MW2-20210127**

**Date Collected: 01/27/21 16:00**

**Date Received: 01/28/21 11:00**

**Lab Sample ID: 580-100752-9**

**Matrix: Water**

Analyte	Result	Qualifier	RL	MDL	Unit	D	Prepared	Analyzed	Dil Fac
<b>Chloride</b>	<b>80</b>		1.5		mg/L			01/29/21 12:01	1
Nitrite as N	ND		0.40		mg/L			01/29/21 12:01	1
<b>Nitrate as N</b>	<b>3.2</b>		0.20		mg/L			01/29/21 12:01	1
<b>Sulfate</b>	<b>50</b>		1.5		mg/L			01/29/21 12:01	1
Sulfide	ND		0.050		mg/L			02/02/21 15:10	1
<b>Total Organic Carbon</b>	<b>3.6</b>		1.5		mg/L			02/02/21 22:20	1

**Client Sample ID: RNS-MW6-52.5-20210127**

**Date Collected: 01/27/21 18:50**

**Date Received: 01/28/21 11:00**

**Lab Sample ID: 580-100752-11**

**Matrix: Water**

Analyte	Result	Qualifier	RL	MDL	Unit	D	Prepared	Analyzed	Dil Fac
<b>Chloride</b>	<b>41</b>		1.5		mg/L			01/29/21 12:36	1
Nitrite as N	ND		0.40		mg/L			01/29/21 12:36	1
<b>Nitrate as N</b>	<b>1.1</b>		0.20		mg/L			01/29/21 12:36	1
<b>Sulfate</b>	<b>26</b>	<b>F1</b>	1.5		mg/L			01/29/21 12:36	1
Sulfide	ND		0.050		mg/L			02/02/21 15:08	1
<b>Total Organic Carbon</b>	<b>3.1</b>		1.5		mg/L			02/02/21 22:36	1

**Client Sample ID: MW13-20210127**

**Date Collected: 01/27/21 17:50**

**Date Received: 01/28/21 11:00**

**Lab Sample ID: 580-100752-12**

**Matrix: Water**

Analyte	Result	Qualifier	RL	MDL	Unit	D	Prepared	Analyzed	Dil Fac
<b>Chloride</b>	<b>24</b>		1.5		mg/L			01/29/21 12:24	1
Nitrite as N	ND		0.40		mg/L			01/29/21 12:24	1
<b>Nitrate as N</b>	<b>1.2</b>		0.20		mg/L			01/29/21 12:24	1
<b>Sulfate</b>	<b>30</b>		1.5		mg/L			01/29/21 12:24	1
Sulfide	ND		0.050		mg/L			02/02/21 15:06	1
<b>Total Organic Carbon</b>	<b>2.0</b>		1.5		mg/L			02/02/21 22:52	1

Eurofins TestAmerica, Seattle

# QC Sample Results

Client: Landau & Associates, Inc.  
Project/Site: Sauro's

Job ID: 580-100752-1

## Method: 8260C LL - Volatile Organic Compounds by GC/MS

**Lab Sample ID: MB 580-349383/7**  
**Matrix: Water**  
**Analysis Batch: 349383**

**Client Sample ID: Method Blank**  
**Prep Type: Total/NA**

Analyte	MB Result	MB Qualifier	RL	MDL	Unit	D	Prepared	Analyzed	Dil Fac
Vinyl chloride	ND		0.20		ug/L			02/06/21 08:45	1
cis-1,2-Dichloroethene	ND		0.20		ug/L			02/06/21 08:45	1
Trichloroethene	ND		0.20		ug/L			02/06/21 08:45	1
Tetrachloroethene	ND		0.20		ug/L			02/06/21 08:45	1

Surrogate	MB %Recovery	MB Qualifier	Limits	Prepared	Analyzed	Dil Fac
<i>Toluene-d8 (Surr)</i>	101		80 - 120		02/06/21 08:45	1
<i>1,2-Dichloroethane-d4 (Surr)</i>	100		80 - 120		02/06/21 08:45	1
<i>4-Bromofluorobenzene (Surr)</i>	103		80 - 120		02/06/21 08:45	1
<i>Dibromofluoromethane (Surr)</i>	107		80 - 120		02/06/21 08:45	1

**Lab Sample ID: LCS 580-349383/4**  
**Matrix: Water**  
**Analysis Batch: 349383**

**Client Sample ID: Lab Control Sample**  
**Prep Type: Total/NA**

Analyte	Spike Added	LCS Result	LCS Qualifier	Unit	D	%Rec	%Rec. Limits
Vinyl chloride	5.00	4.84		ug/L		97	69 - 128
cis-1,2-Dichloroethene	5.00	5.14		ug/L		103	72 - 130
Trichloroethene	5.00	5.71		ug/L		114	72 - 136
Tetrachloroethene	5.00	5.19		ug/L		104	75 - 131

Surrogate	LCS %Recovery	LCS Qualifier	Limits
<i>Toluene-d8 (Surr)</i>	98		80 - 120
<i>1,2-Dichloroethane-d4 (Surr)</i>	102		80 - 120
<i>4-Bromofluorobenzene (Surr)</i>	100		80 - 120
<i>Dibromofluoromethane (Surr)</i>	98		80 - 120

**Lab Sample ID: LCSD 580-349383/5**  
**Matrix: Water**  
**Analysis Batch: 349383**

**Client Sample ID: Lab Control Sample Dup**  
**Prep Type: Total/NA**

Analyte	Spike Added	LCSD Result	LCSD Qualifier	Unit	D	%Rec	%Rec. Limits	RPD	RPD Limit
Vinyl chloride	5.00	4.81		ug/L		96	69 - 128	1	21
cis-1,2-Dichloroethene	5.00	5.13		ug/L		103	72 - 130	0	10
Trichloroethene	5.00	5.41		ug/L		108	72 - 136	5	14
Tetrachloroethene	5.00	5.11		ug/L		102	75 - 131	1	20

Surrogate	LCSD %Recovery	LCSD Qualifier	Limits
<i>Toluene-d8 (Surr)</i>	97		80 - 120
<i>1,2-Dichloroethane-d4 (Surr)</i>	104		80 - 120
<i>4-Bromofluorobenzene (Surr)</i>	100		80 - 120
<i>Dibromofluoromethane (Surr)</i>	99		80 - 120

# QC Sample Results

Client: Landau & Associates, Inc.  
Project/Site: Sauro's

Job ID: 580-100752-1

## Method: 8260C LL - Volatile Organic Compounds by GC/MS (Continued)

**Lab Sample ID: MB 580-349601/7**  
**Matrix: Water**  
**Analysis Batch: 349601**

**Client Sample ID: Method Blank**  
**Prep Type: Total/NA**

Analyte	MB Result	MB Qualifier	RL	MDL	Unit	D	Prepared	Analyzed	Dil Fac
cis-1,2-Dichloroethene	ND		0.20		ug/L			02/10/21 11:28	1
Trichloroethene	ND		0.20		ug/L			02/10/21 11:28	1
Tetrachloroethene	0.360		0.20		ug/L			02/10/21 11:28	1

Surrogate	MB %Recovery	MB Qualifier	Limits	Prepared	Analyzed	Dil Fac
Toluene-d8 (Surr)	95		80 - 120		02/10/21 11:28	1
1,2-Dichloroethane-d4 (Surr)	100		80 - 120		02/10/21 11:28	1
4-Bromofluorobenzene (Surr)	97		80 - 120		02/10/21 11:28	1
Dibromofluoromethane (Surr)	98		80 - 120		02/10/21 11:28	1

**Lab Sample ID: LCS 580-349601/4**  
**Matrix: Water**  
**Analysis Batch: 349601**

**Client Sample ID: Lab Control Sample**  
**Prep Type: Total/NA**

Analyte	Spike Added	LCS Result	LCS Qualifier	Unit	D	%Rec	%Rec. Limits
cis-1,2-Dichloroethene	5.00	5.05		ug/L		101	72 - 130
Trichloroethene	5.00	5.39		ug/L		108	72 - 136
Tetrachloroethene	5.00	5.90		ug/L		118	75 - 131

Surrogate	LCS %Recovery	LCS Qualifier	Limits
Toluene-d8 (Surr)	98		80 - 120
1,2-Dichloroethane-d4 (Surr)	96		80 - 120
4-Bromofluorobenzene (Surr)	96		80 - 120
Dibromofluoromethane (Surr)	96		80 - 120

**Lab Sample ID: LCSD 580-349601/5**  
**Matrix: Water**  
**Analysis Batch: 349601**

**Client Sample ID: Lab Control Sample Dup**  
**Prep Type: Total/NA**

Analyte	Spike Added	LCSD Result	LCSD Qualifier	Unit	D	%Rec	%Rec. Limits	RPD	RPD Limit
cis-1,2-Dichloroethene	5.00	5.27		ug/L		105	72 - 130	4	10
Trichloroethene	5.00	5.28		ug/L		106	72 - 136	2	14
Tetrachloroethene	5.00	5.87		ug/L		117	75 - 131	0	20

Surrogate	LCSD %Recovery	LCSD Qualifier	Limits
Toluene-d8 (Surr)	98		80 - 120
1,2-Dichloroethane-d4 (Surr)	96		80 - 120
4-Bromofluorobenzene (Surr)	98		80 - 120
Dibromofluoromethane (Surr)	99		80 - 120

## Method: RSK-175 - Dissolved Gases (GC)

**Lab Sample ID: MB 280-525066/4**  
**Matrix: Water**  
**Analysis Batch: 525066**

**Client Sample ID: Method Blank**  
**Prep Type: Total/NA**

Analyte	MB Result	MB Qualifier	RL	MDL	Unit	D	Prepared	Analyzed	Dil Fac
Methane	ND		0.0050		mg/L			02/01/21 10:54	1

Eurofins TestAmerica, Seattle

# QC Sample Results

Client: Landau & Associates, Inc.  
Project/Site: Sauro's

Job ID: 580-100752-1

## Method: RSK-175 - Dissolved Gases (GC) (Continued)

**Lab Sample ID: MB 280-525066/4**  
**Matrix: Water**  
**Analysis Batch: 525066**

**Client Sample ID: Method Blank**  
**Prep Type: Total/NA**

Analyte	MB Result	MB Qualifier	RL	MDL	Unit	D	Prepared	Analyzed	Dil Fac
Ethylene	ND		0.0050		mg/L			02/01/21 10:54	1
Ethane	ND		0.0050		mg/L			02/01/21 10:54	1
Acetylene	ND		0.0050		mg/L			02/01/21 10:54	1

**Lab Sample ID: LCS 280-525066/2**  
**Matrix: Water**  
**Analysis Batch: 525066**

**Client Sample ID: Lab Control Sample**  
**Prep Type: Total/NA**

Analyte	Spike Added	LCS Result	LCS Qualifier	Unit	D	%Rec	%Rec. Limits
Methane	0.0730	0.0680		mg/L		93	75 - 125
Ethylene	0.128	0.124		mg/L		97	75 - 125
Ethane	0.137	0.126		mg/L		92	75 - 125
Acetylene	0.119	0.129		mg/L		109	75 - 125

**Lab Sample ID: LCSD 280-525066/3**  
**Matrix: Water**  
**Analysis Batch: 525066**

**Client Sample ID: Lab Control Sample Dup**  
**Prep Type: Total/NA**

Analyte	Spike Added	LCSD Result	LCSD Qualifier	Unit	D	%Rec	%Rec. Limits	RPD	RPD Limit
Methane	0.0730	0.0708		mg/L		97	75 - 125	4	20
Ethylene	0.128	0.130		mg/L		101	75 - 125	4	20
Ethane	0.137	0.132		mg/L		96	75 - 125	4	20
Acetylene	0.119	0.127		mg/L		107	75 - 125	2	20

**Lab Sample ID: 580-100752-4 DU**  
**Matrix: Water**  
**Analysis Batch: 525066**

**Client Sample ID: LAI-MW2-20210127**  
**Prep Type: Total/NA**

Analyte	Sample Result	Sample Qualifier	DU Result	DU Qualifier	Unit	D	RPD	RPD Limit
Methane	0.0063		0.00571		mg/L		10	20
Ethylene	ND		ND		mg/L		NC	20
Ethane	ND		ND		mg/L		10	20
Acetylene	ND		ND		mg/L		NC	20

## Method: 300.0 - Anions, Ion Chromatography

**Lab Sample ID: MB 580-348858/15**  
**Matrix: Water**  
**Analysis Batch: 348858**

**Client Sample ID: Method Blank**  
**Prep Type: Total/NA**

Analyte	MB Result	MB Qualifier	RL	MDL	Unit	D	Prepared	Analyzed	Dil Fac
Chloride	ND		1.5		mg/L			01/29/21 14:33	1
Sulfate	ND		1.5		mg/L			01/29/21 14:33	1

**Lab Sample ID: LCS 580-348858/16**  
**Matrix: Water**  
**Analysis Batch: 348858**

**Client Sample ID: Lab Control Sample**  
**Prep Type: Total/NA**

Analyte	Spike Added	LCS Result	LCS Qualifier	Unit	D	%Rec	%Rec. Limits
Chloride	50.0	55.0		mg/L		110	90 - 110

Eurofins TestAmerica, Seattle

# QC Sample Results

Client: Landau & Associates, Inc.  
Project/Site: Sauro's

Job ID: 580-100752-1

## Method: 300.0 - Anions, Ion Chromatography (Continued)

**Lab Sample ID: LCS 580-348858/16**  
**Matrix: Water**  
**Analysis Batch: 348858**

**Client Sample ID: Lab Control Sample**  
**Prep Type: Total/NA**

Analyte	Spike Added	LCS Result	LCS Qualifier	Unit	D	%Rec	%Rec. Limits
Sulfate	50.0	49.8		mg/L		100	90 - 110

**Lab Sample ID: LCSD 580-348858/17**  
**Matrix: Water**  
**Analysis Batch: 348858**

**Client Sample ID: Lab Control Sample Dup**  
**Prep Type: Total/NA**

Analyte	Spike Added	LCSD Result	LCSD Qualifier	Unit	D	%Rec	%Rec. Limits	RPD	RPD Limit
Chloride	50.0	55.0		mg/L		110	90 - 110	0	15
Sulfate	50.0	49.1		mg/L		98	90 - 110	1	15

**Lab Sample ID: 580-100752-11 MS**  
**Matrix: Water**  
**Analysis Batch: 348858**

**Client Sample ID: RNS-MW6-52.5-20210127**  
**Prep Type: Total/NA**

Analyte	Sample Result	Sample Qualifier	Spike Added	MS Result	MS Qualifier	Unit	D	%Rec	%Rec. Limits
Chloride	41		50.0	89.7		mg/L		98	90 - 110
Sulfate	26	F1	50.0	64.2	F1	mg/L		77	90 - 110

**Lab Sample ID: 580-100752-11 MSD**  
**Matrix: Water**  
**Analysis Batch: 348858**

**Client Sample ID: RNS-MW6-52.5-20210127**  
**Prep Type: Total/NA**

Analyte	Sample Result	Sample Qualifier	Spike Added	MSD Result	MSD Qualifier	Unit	D	%Rec	%Rec. Limits	RPD	RPD Limit
Chloride	41		50.0	90.5		mg/L		99	90 - 110	1	15
Sulfate	26	F1	50.0	68.5	F1	mg/L		85	90 - 110	7	15

**Lab Sample ID: MB 580-348859/15**  
**Matrix: Water**  
**Analysis Batch: 348859**

**Client Sample ID: Method Blank**  
**Prep Type: Total/NA**

Analyte	MB Result	MB Qualifier	RL	MDL	Unit	D	Prepared	Analyzed	Dil Fac
Nitrite as N	ND		0.40		mg/L			01/29/21 14:33	1
Nitrate as N	ND		0.20		mg/L			01/29/21 14:33	1

**Lab Sample ID: LCS 580-348859/16**  
**Matrix: Water**  
**Analysis Batch: 348859**

**Client Sample ID: Lab Control Sample**  
**Prep Type: Total/NA**

Analyte	Spike Added	LCS Result	LCS Qualifier	Unit	D	%Rec	%Rec. Limits
Nitrite as N	5.00	5.46		mg/L		109	90 - 110
Nitrate as N	5.00	5.50		mg/L		110	90 - 110

**Lab Sample ID: LCSD 580-348859/17**  
**Matrix: Water**  
**Analysis Batch: 348859**

**Client Sample ID: Lab Control Sample Dup**  
**Prep Type: Total/NA**

Analyte	Spike Added	LCSD Result	LCSD Qualifier	Unit	D	%Rec	%Rec. Limits	RPD	RPD Limit
Nitrite as N	5.00	5.41		mg/L		108	90 - 110	1	15
Nitrate as N	5.00	5.45		mg/L		109	90 - 110	1	15

Eurofins TestAmerica, Seattle

# QC Sample Results

Client: Landau & Associates, Inc.  
Project/Site: Sauro's

Job ID: 580-100752-1

## Method: 300.0 - Anions, Ion Chromatography (Continued)

**Lab Sample ID: 580-100752-11 MS**  
**Matrix: Water**  
**Analysis Batch: 348859**

**Client Sample ID: RNS-MW6-52.5-20210127**  
**Prep Type: Total/NA**

Analyte	Sample Result	Sample Qualifier	Spike Added	MS Result	MS Qualifier	Unit	D	%Rec	%Rec. Limits
Nitrite as N	ND		5.00	5.35		mg/L		107	90 - 110
Nitrate as N	1.1		5.00	6.35		mg/L		105	90 - 110

**Lab Sample ID: 580-100752-11 MSD**  
**Matrix: Water**  
**Analysis Batch: 348859**

**Client Sample ID: RNS-MW6-52.5-20210127**  
**Prep Type: Total/NA**

Analyte	Sample Result	Sample Qualifier	Spike Added	MSD Result	MSD Qualifier	Unit	D	%Rec	%Rec. Limits	RPD	RPD Limit
Nitrite as N	ND		5.00	5.29		mg/L		106	90 - 110	1	15
Nitrate as N	1.1		5.00	6.20		mg/L		102	90 - 110	2	15

**Lab Sample ID: MB 580-349089/48**  
**Matrix: Water**  
**Analysis Batch: 349089**

**Client Sample ID: Method Blank**  
**Prep Type: Total/NA**

Analyte	MB Result	MB Qualifier	RL	MDL	Unit	D	Prepared	Analyzed	Dil Fac
Chloride	ND		1.5		mg/L			02/03/21 00:30	1
Sulfate	ND		1.5		mg/L			02/03/21 00:30	1

**Lab Sample ID: LCS 580-349089/51**  
**Matrix: Water**  
**Analysis Batch: 349089**

**Client Sample ID: Lab Control Sample**  
**Prep Type: Total/NA**

Analyte	Spike Added	LCS Result	LCS Qualifier	Unit	D	%Rec	%Rec. Limits
Chloride	50.0	52.3		mg/L		105	90 - 110
Sulfate	50.0	51.4		mg/L		103	90 - 110

**Lab Sample ID: LCSD 580-349089/52**  
**Matrix: Water**  
**Analysis Batch: 349089**

**Client Sample ID: Lab Control Sample Dup**  
**Prep Type: Total/NA**

Analyte	Spike Added	LCSD Result	LCSD Qualifier	Unit	D	%Rec	%Rec. Limits	RPD	RPD Limit
Chloride	50.0	52.8		mg/L		106	90 - 110	1	15
Sulfate	50.0	52.3		mg/L		105	90 - 110	2	15

## Method: SM 4500 S2 D - Sulfide, Total

**Lab Sample ID: MB 280-525263/11**  
**Matrix: Water**  
**Analysis Batch: 525263**

**Client Sample ID: Method Blank**  
**Prep Type: Total/NA**

Analyte	MB Result	MB Qualifier	RL	MDL	Unit	D	Prepared	Analyzed	Dil Fac
Sulfide	ND		0.050		mg/L			02/02/21 15:04	1

**Lab Sample ID: LCS 280-525263/9**  
**Matrix: Water**  
**Analysis Batch: 525263**

**Client Sample ID: Lab Control Sample**  
**Prep Type: Total/NA**

Analyte	Spike Added	LCS Result	LCS Qualifier	Unit	D	%Rec	%Rec. Limits
Sulfide	0.500	0.506		mg/L		101	81 - 122

Eurofins TestAmerica, Seattle

# QC Sample Results

Client: Landau & Associates, Inc.  
Project/Site: Sauro's

Job ID: 580-100752-1

## Method: SM 4500 S2 D - Sulfide, Total (Continued)

**Lab Sample ID: LCSD 280-525263/10**  
**Matrix: Water**  
**Analysis Batch: 525263**

**Client Sample ID: Lab Control Sample Dup**  
**Prep Type: Total/NA**

Analyte	Spike Added	LCSD Result	LCSD Qualifier	Unit	D	%Rec	%Rec. Limits	RPD	RPD Limit
Sulfide	0.500	0.504		mg/L		101	81 - 122	0	10

**Lab Sample ID: 580-100752-2 MS**  
**Matrix: Water**  
**Analysis Batch: 525263**

**Client Sample ID: LAI-MW4-20210127**  
**Prep Type: Total/NA**

Analyte	Sample Result	Sample Qualifier	Spike Added	MS Result	MS Qualifier	Unit	D	%Rec	%Rec. Limits
Sulfide	ND	F1	0.500	0.210	F1	mg/L		42	81 - 122

**Lab Sample ID: 580-100752-2 MSD**  
**Matrix: Water**  
**Analysis Batch: 525263**

**Client Sample ID: LAI-MW4-20210127**  
**Prep Type: Total/NA**

Analyte	Sample Result	Sample Qualifier	Spike Added	MSD Result	MSD Qualifier	Unit	D	%Rec	%Rec. Limits	RPD	RPD Limit
Sulfide	ND	F1	0.500	0.208	F1	mg/L		42	81 - 122	1	10

## Method: SM 5310B - Organic Carbon, Total (TOC)

**Lab Sample ID: MB 580-349083/33**  
**Matrix: Water**  
**Analysis Batch: 349083**

**Client Sample ID: Method Blank**  
**Prep Type: Total/NA**

Analyte	MB Result	MB Qualifier	RL	MDL	Unit	D	Prepared	Analyzed	Dil Fac
Total Organic Carbon	ND		1.5		mg/L			02/02/21 18:25	1

**Lab Sample ID: LCS 580-349083/34**  
**Matrix: Water**  
**Analysis Batch: 349083**

**Client Sample ID: Lab Control Sample**  
**Prep Type: Total/NA**

Analyte	Spike Added	LCS Result	LCS Qualifier	Unit	D	%Rec	%Rec. Limits
Total Organic Carbon	10.0	10.7		mg/L		107	85 - 115

**Lab Sample ID: LCSD 580-349083/35**  
**Matrix: Water**  
**Analysis Batch: 349083**

**Client Sample ID: Lab Control Sample Dup**  
**Prep Type: Total/NA**

Analyte	Spike Added	LCSD Result	LCSD Qualifier	Unit	D	%Rec	%Rec. Limits	RPD	RPD Limit
Total Organic Carbon	10.0	10.5		mg/L		105	85 - 115	2	20

**Lab Sample ID: 580-100752-2 MS**  
**Matrix: Water**  
**Analysis Batch: 349083**

**Client Sample ID: LAI-MW4-20210127**  
**Prep Type: Total/NA**

Analyte	Sample Result	Sample Qualifier	Spike Added	MS Result	MS Qualifier	Unit	D	%Rec	%Rec. Limits
Total Organic Carbon	3.2		10.0	13.8		mg/L		106	85 - 115

# QC Sample Results

Client: Landau & Associates, Inc.  
Project/Site: Sauro's

Job ID: 580-100752-1

## Method: SM 5310B - Organic Carbon, Total (TOC) (Continued)

**Lab Sample ID: 580-100752-2 MSD**  
**Matrix: Water**  
**Analysis Batch: 349083**

**Client Sample ID: LAI-MW4-20210127**  
**Prep Type: Total/NA**

Analyte	Sample Result	Sample Qualifier	Spike Added	MSD Result	MSD Qualifier	Unit	D	%Rec	%Rec. Limits	RPD	RPD Limit
Total Organic Carbon	3.2		10.0	14.0		mg/L		108	85 - 115	1	20

**Lab Sample ID: 580-100752-2 DU**  
**Matrix: Water**  
**Analysis Batch: 349083**

**Client Sample ID: LAI-MW4-20210127**  
**Prep Type: Total/NA**

Analyte	Sample Result	Sample Qualifier	DU Result	DU Qualifier	Unit	D	RPD	RPD Limit
Total Organic Carbon	3.2		3.01		mg/L		6	20



# Lab Chronicle

Client: Landau & Associates, Inc.  
Project/Site: Sauro's

Job ID: 580-100752-1

**Client Sample ID: Tripblank-20210127**

**Lab Sample ID: 580-100752-1**

**Date Collected: 01/27/21 00:01**

**Matrix: Water**

**Date Received: 01/28/21 11:00**

Prep Type	Batch Type	Batch Method	Run	Dilution Factor	Batch Number	Prepared or Analyzed	Analyst	Lab
Total/NA	Analysis	8260C LL		1	349383	02/06/21 09:36	K1G	TAL SEA

**Client Sample ID: LAI-MW4-20210127**

**Lab Sample ID: 580-100752-2**

**Date Collected: 01/27/21 09:30**

**Matrix: Water**

**Date Received: 01/28/21 11:00**

Prep Type	Batch Type	Batch Method	Run	Dilution Factor	Batch Number	Prepared or Analyzed	Analyst	Lab
Total/NA	Analysis	8260C LL		1	349383	02/06/21 10:02	K1G	TAL SEA
Total/NA	Analysis	RSK-175		1	525066	02/01/21 13:58	CAS	TAL DEN
Total/NA	Analysis	300.0		1	348858	01/29/21 13:34	AAC	TAL SEA
Total/NA	Analysis	300.0		1	348859	01/29/21 13:34	AAC	TAL SEA
Total/NA	Analysis	SM 4500 S2 D		1	525263	02/02/21 15:04	BWH	TAL DEN
Total/NA	Analysis	SM 5310B		1	349083	02/02/21 19:13	R1K	TAL SEA

**Client Sample ID: Dup1-20210127**

**Lab Sample ID: 580-100752-3**

**Date Collected: 01/27/21 09:35**

**Matrix: Water**

**Date Received: 01/28/21 11:00**

Prep Type	Batch Type	Batch Method	Run	Dilution Factor	Batch Number	Prepared or Analyzed	Analyst	Lab
Total/NA	Analysis	8260C LL		1	349383	02/06/21 10:28	K1G	TAL SEA
Total/NA	Analysis	RSK-175		1	525066	02/01/21 14:10	CAS	TAL DEN
Total/NA	Analysis	300.0		1	348858	01/29/21 13:46	AAC	TAL SEA
Total/NA	Analysis	300.0		1	348859	01/29/21 13:46	AAC	TAL SEA
Total/NA	Analysis	SM 4500 S2 D		1	525263	02/02/21 15:05	BWH	TAL DEN
Total/NA	Analysis	SM 5310B		1	349083	02/02/21 20:15	R1K	TAL SEA

**Client Sample ID: LAI-MW2-20210127**

**Lab Sample ID: 580-100752-4**

**Date Collected: 01/27/21 11:30**

**Matrix: Water**

**Date Received: 01/28/21 11:00**

Prep Type	Batch Type	Batch Method	Run	Dilution Factor	Batch Number	Prepared or Analyzed	Analyst	Lab
Total/NA	Analysis	8260C LL		1	349383	02/06/21 10:54	K1G	TAL SEA
Total/NA	Analysis	8260C LL	DL	10	349601	02/10/21 14:40	T1W	TAL SEA
Total/NA	Analysis	RSK-175		1	525066	02/01/21 14:34	CAS	TAL DEN
Total/NA	Analysis	300.0		1	348858	01/29/21 10:15	AAC	TAL SEA
Total/NA	Analysis	300.0		1	348859	01/29/21 10:15	AAC	TAL SEA
Total/NA	Analysis	SM 4500 S2 D		1	525263	02/02/21 15:06	BWH	TAL DEN
Total/NA	Analysis	SM 5310B		1	349083	02/02/21 20:31	R1K	TAL SEA

# Lab Chronicle

Client: Landau & Associates, Inc.  
Project/Site: Sauro's

Job ID: 580-100752-1

**Client Sample ID: LAI-MW1-20210127**

**Lab Sample ID: 580-100752-5**

**Date Collected: 01/27/21 13:20**

**Matrix: Water**

**Date Received: 01/28/21 11:00**

Prep Type	Batch Type	Batch Method	Run	Dilution Factor	Batch Number	Prepared or Analyzed	Analyst	Lab
Total/NA	Analysis	8260C LL		1	349383	02/06/21 11:45	K1G	TAL SEA
Total/NA	Analysis	RSK-175		1	525066	02/01/21 14:59	CAS	TAL DEN
Total/NA	Analysis	300.0		1	348858	01/29/21 11:26	AAC	TAL SEA
Total/NA	Analysis	300.0		1	348859	01/29/21 11:26	AAC	TAL SEA
Total/NA	Analysis	SM 4500 S2 D		1	525263	02/02/21 15:07	BWH	TAL DEN
Total/NA	Analysis	SM 5310B		1	349083	02/02/21 20:46	R1K	TAL SEA

**Client Sample ID: LAI-MW5-20210127**

**Lab Sample ID: 580-100752-6**

**Date Collected: 01/27/21 14:30**

**Matrix: Water**

**Date Received: 01/28/21 11:00**

Prep Type	Batch Type	Batch Method	Run	Dilution Factor	Batch Number	Prepared or Analyzed	Analyst	Lab
Total/NA	Analysis	8260C LL		1	349383	02/06/21 12:11	K1G	TAL SEA
Total/NA	Analysis	RSK-175		1	525066	02/01/21 15:11	CAS	TAL DEN
Total/NA	Analysis	300.0		1	348858	01/29/21 11:37	AAC	TAL SEA
Total/NA	Analysis	300.0		1	348859	01/29/21 11:37	AAC	TAL SEA
Total/NA	Analysis	SM 4500 S2 D		1	525263	02/02/21 15:07	BWH	TAL DEN
Total/NA	Analysis	SM 5310B		1	349083	02/02/21 21:33	R1K	TAL SEA

**Client Sample ID: RNS-MW2-20210127**

**Lab Sample ID: 580-100752-7**

**Date Collected: 01/27/21 15:50**

**Matrix: Water**

**Date Received: 01/28/21 11:00**

Prep Type	Batch Type	Batch Method	Run	Dilution Factor	Batch Number	Prepared or Analyzed	Analyst	Lab
Total/NA	Analysis	8260C LL		1	349383	02/06/21 12:37	K1G	TAL SEA
Total/NA	Analysis	RSK-175		1	525066	02/01/21 15:24	CAS	TAL DEN
Total/NA	Analysis	300.0		1	348858	01/29/21 11:49	AAC	TAL SEA
Total/NA	Analysis	300.0		1	348859	01/29/21 11:49	AAC	TAL SEA
Total/NA	Analysis	300.0		10	349089	02/03/21 00:07	AAC	TAL SEA
Total/NA	Analysis	SM 4500 S2 D		1	525263	02/02/21 15:08	BWH	TAL DEN
Total/NA	Analysis	SM 5310B		1	349083	02/02/21 21:49	R1K	TAL SEA

**Client Sample ID: LAI-MW3-20210127**

**Lab Sample ID: 580-100752-8**

**Date Collected: 01/27/21 16:45**

**Matrix: Water**

**Date Received: 01/28/21 11:00**

Prep Type	Batch Type	Batch Method	Run	Dilution Factor	Batch Number	Prepared or Analyzed	Analyst	Lab
Total/NA	Analysis	8260C LL		1	349383	02/06/21 13:02	K1G	TAL SEA
Total/NA	Analysis	RSK-175		1	525066	02/01/21 15:36	CAS	TAL DEN
Total/NA	Analysis	300.0		1	348858	01/29/21 12:12	AAC	TAL SEA
Total/NA	Analysis	300.0		1	348859	01/29/21 12:12	AAC	TAL SEA
Total/NA	Analysis	SM 4500 S2 D		1	525263	02/02/21 15:09	BWH	TAL DEN
Total/NA	Analysis	SM 5310B		1	349083	02/02/21 22:05	R1K	TAL SEA

Eurofins TestAmerica, Seattle

# Lab Chronicle

Client: Landau & Associates, Inc.  
Project/Site: Sauro's

Job ID: 580-100752-1

**Client Sample ID: MW2-20210127**

**Lab Sample ID: 580-100752-9**

**Date Collected: 01/27/21 16:00**

**Matrix: Water**

**Date Received: 01/28/21 11:00**

Prep Type	Batch Type	Batch Method	Run	Dilution Factor	Batch Number	Prepared or Analyzed	Analyst	Lab
Total/NA	Analysis	8260C LL		1	349383	02/06/21 13:28	K1G	TAL SEA
Total/NA	Analysis	RSK-175		1	525066	02/01/21 15:48	CAS	TAL DEN
Total/NA	Analysis	300.0		1	348858	01/29/21 12:01	AAC	TAL SEA
Total/NA	Analysis	300.0		1	348859	01/29/21 12:01	AAC	TAL SEA
Total/NA	Analysis	SM 4500 S2 D		1	525263	02/02/21 15:10	BWH	TAL DEN
Total/NA	Analysis	SM 5310B		1	349083	02/02/21 22:20	R1K	TAL SEA

**Client Sample ID: RNS-MW6-42.5-20210127**

**Lab Sample ID: 580-100752-10**

**Date Collected: 01/27/21 18:30**

**Matrix: Water**

**Date Received: 01/28/21 11:00**

Prep Type	Batch Type	Batch Method	Run	Dilution Factor	Batch Number	Prepared or Analyzed	Analyst	Lab
Total/NA	Analysis	8260C LL		1	349383	02/06/21 13:54	K1G	TAL SEA
Total/NA	Analysis	8260C LL	DL	50	349601	02/10/21 15:06	T1W	TAL SEA

**Client Sample ID: RNS-MW6-52.5-20210127**

**Lab Sample ID: 580-100752-11**

**Date Collected: 01/27/21 18:50**

**Matrix: Water**

**Date Received: 01/28/21 11:00**

Prep Type	Batch Type	Batch Method	Run	Dilution Factor	Batch Number	Prepared or Analyzed	Analyst	Lab
Total/NA	Analysis	8260C LL		1	349383	02/06/21 14:20	K1G	TAL SEA
Total/NA	Analysis	8260C LL	DL	50	349601	02/10/21 15:31	T1W	TAL SEA
Total/NA	Analysis	RSK-175		1	525066	02/01/21 16:00	CAS	TAL DEN
Total/NA	Analysis	300.0		1	348858	01/29/21 12:36	AAC	TAL SEA
Total/NA	Analysis	300.0		1	348859	01/29/21 12:36	AAC	TAL SEA
Total/NA	Analysis	SM 4500 S2 D		1	525263	02/02/21 15:08	BWH	TAL DEN
Total/NA	Analysis	SM 5310B		1	349083	02/02/21 22:36	R1K	TAL SEA

**Client Sample ID: MW13-20210127**

**Lab Sample ID: 580-100752-12**

**Date Collected: 01/27/21 17:50**

**Matrix: Water**

**Date Received: 01/28/21 11:00**

Prep Type	Batch Type	Batch Method	Run	Dilution Factor	Batch Number	Prepared or Analyzed	Analyst	Lab
Total/NA	Analysis	8260C LL		1	349383	02/06/21 14:45	K1G	TAL SEA
Total/NA	Analysis	8260C LL	DL	10	349601	02/10/21 15:57	T1W	TAL SEA
Total/NA	Analysis	RSK-175		1	525066	02/01/21 16:13	CAS	TAL DEN
Total/NA	Analysis	300.0		1	348858	01/29/21 12:24	AAC	TAL SEA
Total/NA	Analysis	300.0		1	348859	01/29/21 12:24	AAC	TAL SEA
Total/NA	Analysis	SM 4500 S2 D		1	525263	02/02/21 15:06	BWH	TAL DEN
Total/NA	Analysis	SM 5310B		1	349083	02/02/21 22:52	R1K	TAL SEA

# Lab Chronicle

Client: Landau & Associates, Inc.  
Project/Site: Sauro's

Job ID: 580-100752-1

**Laboratory References:**

TAL DEN = Eurofins TestAmerica, Denver, 4955 Yarrow Street, Arvada, CO 80002, TEL (303)736-0100

TAL SEA = Eurofins TestAmerica, Seattle, 5755 8th Street East, Tacoma, WA 98424, TEL (253)922-2310

1

2

3

4

5

6

7

8

9

10

11

# Accreditation/Certification Summary

Client: Landau & Associates, Inc.  
Project/Site: Sauro's

Job ID: 580-100752-1

## Laboratory: Eurofins TestAmerica, Seattle

Unless otherwise noted, all analytes for this laboratory were covered under each accreditation/certification below.

Authority	Program	Identification Number	Expiration Date
Washington	State	C553	02-18-21
The following analytes are included in this report, but the laboratory is not certified by the governing authority. This list may include analytes for which the agency does not offer certification.			
Analysis Method	Prep Method	Matrix	Analyte
300.0		Water	Chloride
300.0		Water	Nitrate as N
300.0		Water	Nitrite as N
300.0		Water	Sulfate
8260C LL		Water	cis-1,2-Dichloroethene
8260C LL		Water	Tetrachloroethene
8260C LL		Water	Trichloroethene
8260C LL		Water	Vinyl chloride
SM 5310B		Water	Total Organic Carbon

## Laboratory: Eurofins TestAmerica, Denver

All accreditations/certifications held by this laboratory are listed. Not all accreditations/certifications are applicable to this report.

Authority	Program	Identification Number	Expiration Date
A2LA	Dept. of Defense ELAP	2907.01	10-31-21
A2LA	ISO/IEC 17025	2907.01	10-31-21
Alabama	State Program	40730	09-30-12 *
Alaska (UST)	State	18-001	02-08-21
Arizona	State	AZ0713	12-21-21
Arkansas DEQ	State	19-047-0	06-01-21
California	State	2513	01-08-22
Connecticut	State	PH-0686	09-30-20 *
Florida	NELAP	E87667-57	07-01-21
Georgia	State	4025-011	01-08-22
Illinois	NELAP	2000172019-1	04-30-21
Iowa	State	IA#370	12-02-21
Kansas	NELAP	E-10166	04-30-21
Louisiana	NELAP	30785	06-30-14 *
Louisiana	NELAP	30785	06-30-21
Maine	State	2019011 (231)	03-03-21
Minnesota	NELAP	1788752	12-31-21
Nevada	State	CO000262020-1	07-31-21
New Hampshire	NELAP	205319	04-29-21
New Jersey	NELAP	190002	06-30-21
New York	NELAP	59923	04-01-21
North Carolina (WW/SW)	State	358	12-31-21
North Dakota	State	R-034	01-08-21 *
Oklahoma	State	2018-006	09-01-21
Oregon	NELAP	4025-011	12-08-22
Pennsylvania	NELAP	013	07-31-21
South Carolina	State	72002001	01-08-21 *
Texas	NELAP	TX104704183-08-TX	09-30-09 *
Texas	NELAP	T104704183-20-18	09-30-21
US Fish & Wildlife	US Federal Programs	058448	08-01-21
USDA	US Federal Programs	P330-18-00099	03-26-21
Utah	NELAP	QUAN5	06-30-13 *

\* Accreditation/Certification renewal pending - accreditation/certification considered valid.

Eurofins TestAmerica, Seattle

# Accreditation/Certification Summary

Client: Landau & Associates, Inc.  
Project/Site: Sauro's

Job ID: 580-100752-1

## Laboratory: Eurofins TestAmerica, Denver (Continued)

All accreditations/certifications held by this laboratory are listed. Not all accreditations/certifications are applicable to this report.

<u>Authority</u>	<u>Program</u>	<u>Identification Number</u>	<u>Expiration Date</u>
Utah	NELAP	CO000262019-11	07-31-21
Virginia	NELAP	10490	06-14-21
Washington	State	C583-19	08-03-21
West Virginia DEP	State	354	02-28-21
Wisconsin	State	999615430	08-31-21
Wyoming (UST)	A2LA	2907.01	10-31-21

