



January 14, 2021

Mr. Michael Leong
Sea Mar Community Health Center
1040 South Henderson Street
Seattle, Washington 98108

**Re: Well Installation and Environmental Consulting Services Report
SeaMar Community Health Centers
9635 Des Moines Memorial Drive South
Seattle, Washington 98108
Ecology VCP Project No. NW3172**

Dear Mr. Leong:

The Riley Group, Inc. (RGI) is pleased to present this Well Installation and Environmental Consulting Services Report (Well Installation Report) for the property located at 9635 Des Moines Memorial Drive South in Seattle, Washington (herein referred to as the Property, Figure 1).

The Property is owned by Sea Mar Community Health Center (hereafter referred to as the Client) and is enrolled in the Washington State Department of Ecology (Ecology) Voluntary Cleanup Program (VCP). The Property is identified by Ecology as the Sea Mar Community Health Center Dominics Plaza project (VCP project number NW3172).

On August 21, 2018 the Client, RGI, and RGI, Ms. Kim Wooten (Ecology Project Manager) met to discuss what was required to bring the Property to regulatory closure. Ecology indicated that installation of sampling of an additional groundwater monitoring well on the northern portion of the Property was necessary prior to Ecology issuing a No Further Action (NFA) determination for the Property. The well location is located down-gradient of a small area where diesel-range TPH at concentrations below MTCA soil cleanup levels remains in place.

This Well Installation Report documents the installation sampling of well MW22 on the Property at the request of Ecology along with well modifications, and well surveying services performed on the Property.

The Client retained RGI to perform the scope of work documented in this report. The scope of work for this project was performed in general accordance with RGI's *Task 12 Change Order No. 1* dated April 3, 2018 and *Task 12 Change Order No. 2* dated August 31, 2018, which were authorized by the Client.

BACKGROUND

Numerous environmental investigations and remedial actions have been completed at the Property by RGI in connection with historical petroleum releases at the Property. This environmental work is documented in the following reports prepared by RGI:

- *Draft Environmental Status Report (2018 ESR Report)*, prepared for Sea Mar Community Health Center and dated September 12, 2018.

Corporate Office
17522 Bothell Way Northeast
Bothell, Washington 98011
Phone 425.415.0551 ♦ Fax 425.415.0311

www.riley-group.com

- *2017 Underground Storage Tank Closure and Remedial Action Report (2017 UST/RA Report), prepared for Sea Mar Community Health Center (Sea Mar) and dated September 12, 2017.*
- *1st Quarter 2017 Groundwater Monitoring Report prepared for Sea Mar and dated May 15, 2017.*
- *Remedial Investigation/Feasibility Study and Remedial Action Report (2017 RI/FS/RA Report), prepared for Sea Mar and dated March 13, 2017.*
- *4th Quarter 2016 Groundwater Monitoring Report prepared for Sea Mar and dated January 11, 2017.*
- *3rd Quarter 2016 Groundwater Monitoring Report prepared for Sea Mar and dated October 27, 2016.*
- *2nd Quarter 2016 Groundwater Monitoring Report prepared for Sea Mar and dated August 17, 2016.*
- *Phase II Subsurface Investigation (Phase II), prepared for HomeStreet Bank and dated March 28, 2016.*
- *Phase I Environmental Site Assessment (2016 Phase I ESA), prepared for HomeStreet Bank and dated March 14, 2016.*
- *Supplemental Phase II and Geophysical Survey (Supplemental Phase II), prepared for Sea Mar and dated January 30, 2008.*
- *Geophysical Survey and Limited Phase II Subsurface Investigation (Limited Phase II), prepared for Frontier Bank and dated November 12, 2007.*
- *Phase I Environmental Site Assessment (2007 Phase I ESA), prepared for Frontier Bank and dated October 10, 2007.*

The reader is directed to refer to the above-mentioned reports in their entirety for details pertaining to these investigations. Figures 1, 2, and 3 display current Property conditions and select features pertaining to previously completed environmental work.

It should be noted that groundwater on the western portion of the Property has been impacted with halogenated volatile organic compounds (HVOCs) including trichloroethene (TCE), vinyl chloride, and cis-1,2-Dichloroethene (cis-1,2-DCE) as a result of release(s) on the west-adjointing property. This property is enrolled in the VCP and identified by Ecology as the FMH Material Handling Solutions Site (FMH Site) with VCP Project No. NW3119. The FMH Site is being managed under the VCP by the west-adjointing property owner and their consultant. Additional reports have been prepared for the Property in connection with the release at FMH Site. Work associated with HVOC releases at the FHM Site is not discussed in this report.

SCOPE OF SERVICES

The scope of services performed for this project included the following tasks:

- *Performed public and private utility locating in an attempt to identify the location(s) of buried utility lines situated in and in the vicinity of the drilling location.*
- *Advanced one soil boring using standard direct push drilling techniques to a depth of approximately 14.5 feet below ground surface (bgs). This boring was completed as groundwater monitoring well MW22 and subsequently developed.*

- Collected one groundwater sample from well MW22, and submitted the sample to the laboratory for analyses of contaminants of potential concern (COPCs).
- Compared groundwater analytical results to groundwater cleanup levels that comply with Model Toxics Control Act (MTCA) regulations.
- Modified well monuments at four well locations in order to match the grade of the repaved asphalt parking lot. Made repairs and replaced hardware at several well locations.
- Retained the services of a licensed well surveyor to survey the surface and top of casing (TOC) elevations at 10 groundwater monitoring well locations.
- Obtained depth to groundwater measurements for all 8 groundwater monitoring wells on the Property. This data was used to generate groundwater elevation contours and determine groundwater flow direction across the Property.
- Retained the services of a private utility locate in an attempt to locate wells MW2 and MW3, which were paved over and/or destroyed during the repaving of the asphalt parking lot in early 2019.
- Prepared this Well Installation Report presenting our findings, observations, conclusions, and recommendations.

REGULATORY ANALYSIS OF SITE CONDITIONS UNDER MTCA

Washington State's hazardous waste cleanup law, the Model Toxics Control Act (70.105D RCW), mandates the necessity for site cleanups to protect human health and the environment. The MTCA Cleanup Regulation (173-340 WAC) defines the approach for establishing cleanup requirements for individual sites, including the establishment of cleanup standards and selection of cleanup actions.

The MTCA Cleanup Regulation provides three options for establishing generic and site-specific cleanup levels for soil and groundwater. Method A cleanup levels have been adopted for specific purposes and are intended to provide conservative cleanup levels for sites undergoing routine site characterization or cleanup actions or those sites with relatively few hazardous substances. Method B and C cleanup levels are set using a site risk assessment, which focus on the use of "reasonable maximum exposure" assumptions based on site-specific characteristics and toxicity of the contaminants of concern.

Groundwater Cleanup Levels

The selected groundwater cleanup levels for the Property are the MTCA Method A Cleanup Levels for Groundwater. RGI's evaluation of groundwater analytical data obtained during the RA and previous investigations indicate that these groundwater cleanup levels are sufficient to evaluate whether or not groundwater concentrations of COPCs on the Property are in compliance with MTCA regulations.

Under the MTCA regulation, groundwater cleanup levels must be set at concentrations at least as stringent as applicable state and federal laws (Applicable or Relevant and Appropriate Requirements [ARARs], WAC 173-340-700[5] [a]). Therefore, when no Method A groundwater cleanup level was available for a given compound, the ARAR was referenced. When no Method A or ARAR was available, MTCA Method B groundwater cleanup levels were referenced.

MTCA Method A Cleanup Levels for Groundwater, ARARs, and MTCA Method B groundwater cleanup levels, collectively referred to as groundwater cleanup levels, were obtained from the Ecology Cleanup Levels and Risk Calculation (CLARC) database revised in November of 2020 and are summarized in Table 1.

WELL INSTALLATION, SAMPLING, AND SURVEYING

Well installation, groundwater sampling, and well surveying activities were performed on October 2 and 10, 2018, and June 12, 2019. These activities are discussed below.

Utility Locating

At least 48 hours prior to commencing with any of the intrusive subsurface investigation activities, RGI contacted One-Call public locate service to locate known public and private underground utilities situated in, and in the vicinity of, the drilling location. In addition, RGI reviewed utility and other plans associated with the Property and retained the services of Applied Professional Services, Inc. (APS) to locate privately owned utilities.

Subsurface Investigation

On October 2, 2018, RGI Drilling, Inc. advanced one test probe (MW22) to a depth of approximately 15 feet bgs using a direct push drill rig. A hand auger was used to auger the first 3.5 feet of the test probe to ensure no utilities were present. The test probe was then completed using direct push drilling techniques to a depth of 15 feet bgs. The test probe was ultimately completed as well MW22 and the location of MW22 is depicted on Figures 2 and 3.

Soil was sampled at approximate 5-foot intervals during drilling and soil conditions encountered were described using the Unified Soil Classification System (USCS). Subsurface conditions generally consisted of sand with varying amounts of silt and gravel. A peat layer was encountered between approximately 5 and 5.5 feet bgs. Soil was screened for the presence of volatile organic compounds (VOCs) using a photoionization detector (PID) and/or sheen testing. Field screening did not indicate the presence of soil contamination in any of the soil sample locations. Therefore, no soil samples were submitted to the laboratory for analyses.

Water bearing zones were encountered at approximately 3 feet bgs and 14 feet bgs in the location of MW22 at the time of drilling. Subsurface conditions encountered during drilling are described on the borelog presented in Appendix A.

Well Installation and Development

Well MW22 was constructed of 2-inch diameter Schedule 40 polyvinylchloride (PVC) well casing and screen. Ten feet of prepack well screen was placed from approximately 4.5 to 14.5 feet bgs in order to intercept both of the water bearing zones observed during drilling. The well was backfilled with sand to 1.5 feet above the prepack screen, and two feet of hydrated bentonite placed above the sand. The well was completed with a 1-foot concrete surface seal and a flush mount traffic-rated monument. Monitoring well construction details are presented on the borelog in Appendix A.

After installation, well MW22 was developed using a bailer to purge and surge the well, and approximately 7.5 gallons of water were removed from MW22. The well dried up twice during the purging process and took approximately 30 minutes to recharge each time. Well development was terminated when the turbidity of the water decreased to the satisfaction of RGI personnel.

Groundwater Sampling

On October 10, 2018, RGI collected one groundwater sample from MW22. Prior to groundwater sampling, the depth to groundwater was measured from the northernmost point of the top of the well casing using an electronic water level meter.

After collection of groundwater level data, MW22 was purged using a peristaltic pump and dedicated tubing. Measurements of water quality parameters (temperature, pH, conductivity, dissolved oxygen, turbidity, oxidation/reduction potential, and/or total dissolved solids) were recorded using a Horiba with a flow through cell during purging to ensure that water entering the well casing had stabilized prior to sample collection. Purging continued until water quality parameters had stabilized and approximately 3.5 gallons of water were purged from the well.

During sample collection, the flow rate of the pump was reduced to less than 100 milliliters per minute (mL/min) in accordance with standard low flow sampling techniques. Groundwater was pumped directly through dedicated tubing into laboratory-supplied containers appropriate for the intended analyses. One groundwater sample was submitted to the laboratory for analysis of gasoline-, diesel-, and oil-range TPH and benzene, toluene, ethylbenzene, and xylenes (BTEX).

Standard Sampling Protocols

Groundwater sampling was conducted in accordance with RGI's standard operating and decontamination procedures. Samples were placed in preconditioned, sterilized containers provided by an Ecology accredited third-party analytical laboratory. All drilling and sampling equipment was decontaminated using Alconox® soap and tap water between sample locations.

All samples were appropriately labeled, stored in an iced cooler, and transported to the analytical laboratory using standard chain-of-custody protocols.

ANALYTICAL LABORATORY ANALYSIS

One groundwater sample was collected during this project and submitted to Friedman & Bruya, Inc. (FBI) Laboratory in Seattle, Washington, for the following analyses:

- Benzene, toluene, ethylbenzene, and xylenes (BTEX) using EPA Method 8260C.
- Gasoline-range TPH using Method NWTPH-Gx.
- Diesel- and oil-range TPH using Method NWTPH-Dx without silica gel cleanup.

Groundwater analytical results are summarized in Table 1 and displayed graphically on Figure 3. A copy of the analytical laboratory report and associated sample chain-of-custody form is included in Appendix B.

Groundwater Analytical Results

Diesel-range TPH was detected in well MW22 at a flagged concentration of 330 micrograms/liter ($\mu\text{g/L}$), which is below the groundwater cleanup level of 500 $\mu\text{g/L}$. The laboratory report indicated that the flag was due to the chromatographic pattern not resembling the fuel standard for quantitation.

As previously stated, a peat layer was encountered in the location of well MW22 between 5 and 5.5 feet bgs. The presence of peat has the potential to cause false positive results for diesel-range TPH due to polar trace compounds, which can be the result of organic material (i.e., peat) or fuel breakdown products. RGI contacted FBI analytical laboratory regarding this flagged

concentration. The chemist indicated that the pattern observed on the chromatogram was a common polar trace which may have been caused by the presence of peat. However, since the concentration of diesel-range TPH was below the groundwater cleanup level, no further assessment was conducted.

Gasoline and oil-range TPH and BTEX were not detected in groundwater at concentrations above the compound-specific laboratory detection limits.

WELL MODIFICATIONS AND LOCATING

It was necessary to modify well monuments in the location of wells MW8, MW17A, MW18, and MW21 to match the grade of the asphalt parking lot after repaving activities in 2018 and 2019. Routine maintenance and repair to several other wells was also performed at this time.

Prior to modifying the wells, on April 17, 2018, Looker Asphalt Inc. boxed out the area around each well using 2' x 4' wood beams in order to protect them during the asphalt paving. At this time, RGI attempted to locate former wells MW4 and MW17, MW11, and MW12 using a steel T-probe and a metal detector. MW11 was identified and observed to be severely damaged. The monument had been dislocated and the casing was sheared. MW4, MW17, and MW12 were not identified leading RGI to conclude that these wells were destroyed during construction while RGI was not present onsite.

On April, 25 2019 RGI retained the services of Standard Probe, Inc. (Standard) to adjust wells MW8, MW18, and MW21 after the asphalt work in those areas had been completed. In each location, a jackhammer was used to remove the existing monument and a rotary saw was used to cut the existing asphalt. Once the well monument was adjusted to the correct elevation, the monument was set with one foot of black dyed concrete to match the existing grade.

In the location of MW11, Standard cut the well casing that had been previously sheered by the contractor and replaced the monument, which was set in set in one foot of concrete to match the existing grade. RGI also replaced hardware and/or monument covers on wells MW2, WW3, MW19, and MW20 at that time.

On May 17, 2019, after asphalt work was completed, RGI retained the services of Standard to modify well MW17A to match the new existing grade using the same methodology used for wells MW6, MW18, and MW21. At this time, RGI observed that area of the former locations of wells MW2 and MW3 had been paved over during the recent asphalt work. RGI was not notified about the asphalt work that took place in the locations of MW2 and MW3 and was therefore not onsite during the work and could not take any measures to protect the wells.

On June 19, 2019 RGI retained the services of Applied Professional Services, Inc. (APS) to locate wells MW2 and MW3 using standard utility locating methodologies. No evidence of a monument was observed in either of the mapped well locations. However, utility locating instruments did detect the presence of anomalies a few feet away from the mapped locations. RGI utilized a circular saw to remove asphalt in locations where anomalies were detected. Each location was then excavated to a couple of feet deep using handheld tools. No evidence of a well was observed in either of the locations investigated. RGI concluded that the well monuments for each of these wells were removed during the asphalt paving and it is unknown if well casing remains in the ground. Each location was backfilled with gravel to the existing grade.

RGI conducted an assessment of all wells that were damaged or removed by the contractor during construction without RGI oversight. This assessment was submitted to Ecology and will be documented in the forthcoming Property Closure Report.

WELL SURVEYING AND GROUNDWATER ELEVATION DATA

On June 12, 2019, after all well modifications were completed, RGI retained the services of Duncanson, Inc. to survey the north side of the top of the PVC casing for all existing on Property wells (MW8, MW11, MW17A, MW18, MW19, MW20, MW21, and MW22). The vertical elevation was surveyed to the North American Vertical Datum of 1988 (NAVD88) to an accuracy of ± 0.01 foot and was obtained from the north side at the top of each well casing.

Depth to water measurements were also obtained from all eight existing groundwater monitoring wells using an electronic water level meter and groundwater elevations were calculated with this data and the survey data. Groundwater elevations ranged from 21.80' to 15.14' and groundwater flow direction was to the north-northeast with a hydraulic gradient of approximately 0.11 ft/ft (MW21 to MW22). This is consistent with the groundwater flow direction obtained during previous groundwater sampling events. Groundwater elevation contours are presented on Figure 3 and current well casing elevations and associated groundwater elevations are summarized in Table 1.

CONCLUSIONS AND RECOMMENDATIONS

Based on findings of the investigation, RGI concludes the following:

- Groundwater monitoring well MW22 was installed near the northern boundary of the Property with a screened interval that extends from approximately 4.5 to 14.5 feet bgs. This well is situated down-gradient of an area of diesel-range TPH contaminated soil that was necessary to leave in place during excavation activities in 2016 due to the presence of a high-pressure water line.
- Groundwater flow direction across the Property is to the north-northeast with an approximate hydraulic gradient of 0.11 ft/ft. This groundwater flow direction was consistent with previous groundwater sampling events.
- No contaminants of potential concern were detected in groundwater at concentrations exceeding applicable MTCA groundwater cleanup levels. Therefore, no further groundwater sampling is necessary at the Property.

Based on the results of this investigation, RGI recommends the following:

- Submit a copy of this Well Installation and Environmental Consulting Report to Ecology under the VCP.
- Complete the Property Closure Report and request that Ecology grant a No Further Action (NFA) determination for the Property.

LIMITATIONS

This report is the property of RGI, Sea Mar Community Health Center, and their authorized representatives or affiliates and was prepared in a manner consistent with the level of skill and care ordinarily exercised by members of the profession currently practicing in the same locality and under similar conditions. This report is intended for specific application to the Property located at 9635 Des Moines Memorial Drive South in Seattle, Washington. No other warranty, expressed or implied, is made.

Please contact us at (425) 415-0551 if you have any questions or need additional information.

Sincerely,

THE RILEY GROUP, INC.



Jerry Sawetz
Senior Environmental Scientist



Logan Chinn, LG
Project Geologist



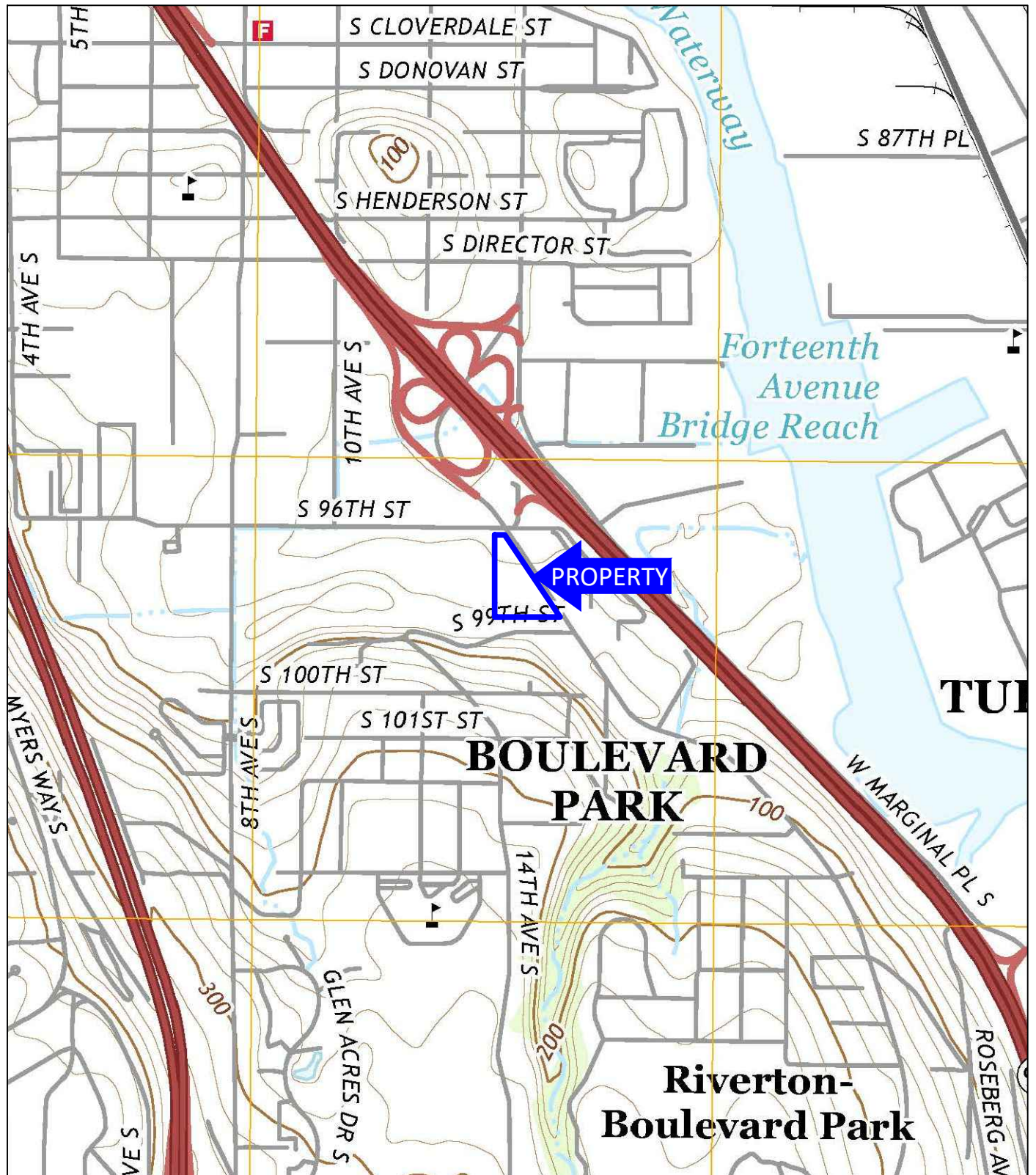
Paul D. Riley, LG, LHG
Principal

Attachments

Figure 1, Property Vicinity Map
Figure 2, Property Representation
Figure 3, Summary of Select Groundwater Analytical Data with June 12, 2019 Groundwater Elevation Contours
Table 1, Summary of Groundwater Analytical Laboratory Results
Appendix A, MW22 Well Construction Log
Appendix B, Analytical Laboratory Reports and Chains of Custody

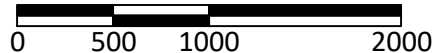
Distribution

Mr. Michael Leong, Sea Mar Community Health Center (1 bound copy and 1 PDF)



USGS, 2017, Seattle South, Washington
7.5-Minute Quadrangle

Approximate Scale: 1"=1000'



Corporate Office
17522 Bothell Way Northeast
Bothell, Washington 98011
Phone: 425.415.0551
Fax: 425.415.0311

Sea Mar Community Health Center

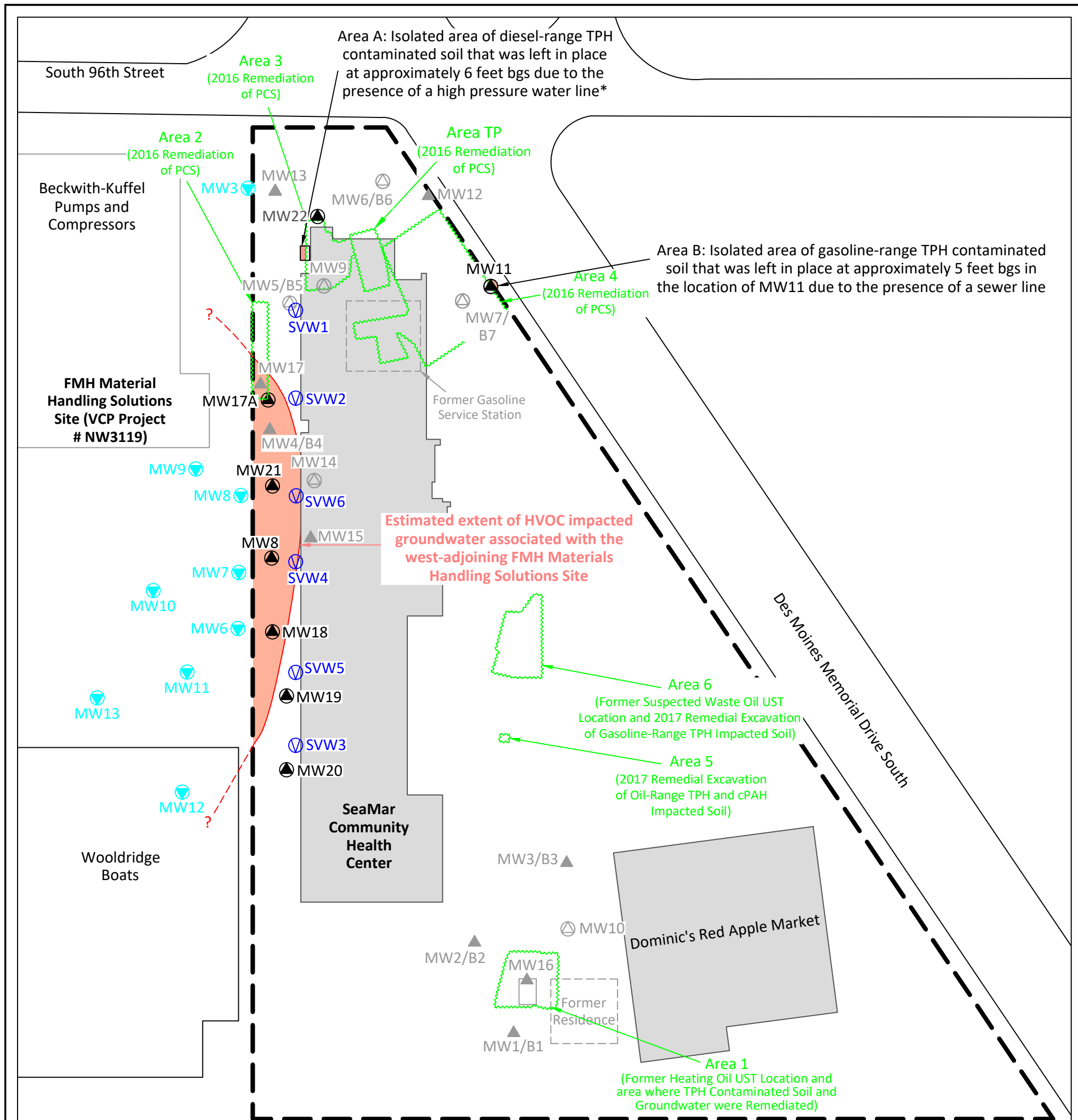
RGI Project Number
2016-023A

Property Vicinity Map

Figure 1

Date Drawn:
01/2021

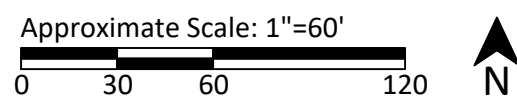
Address: 9635 Des Moines Memorial Drive South, Seattle, Washington 98108



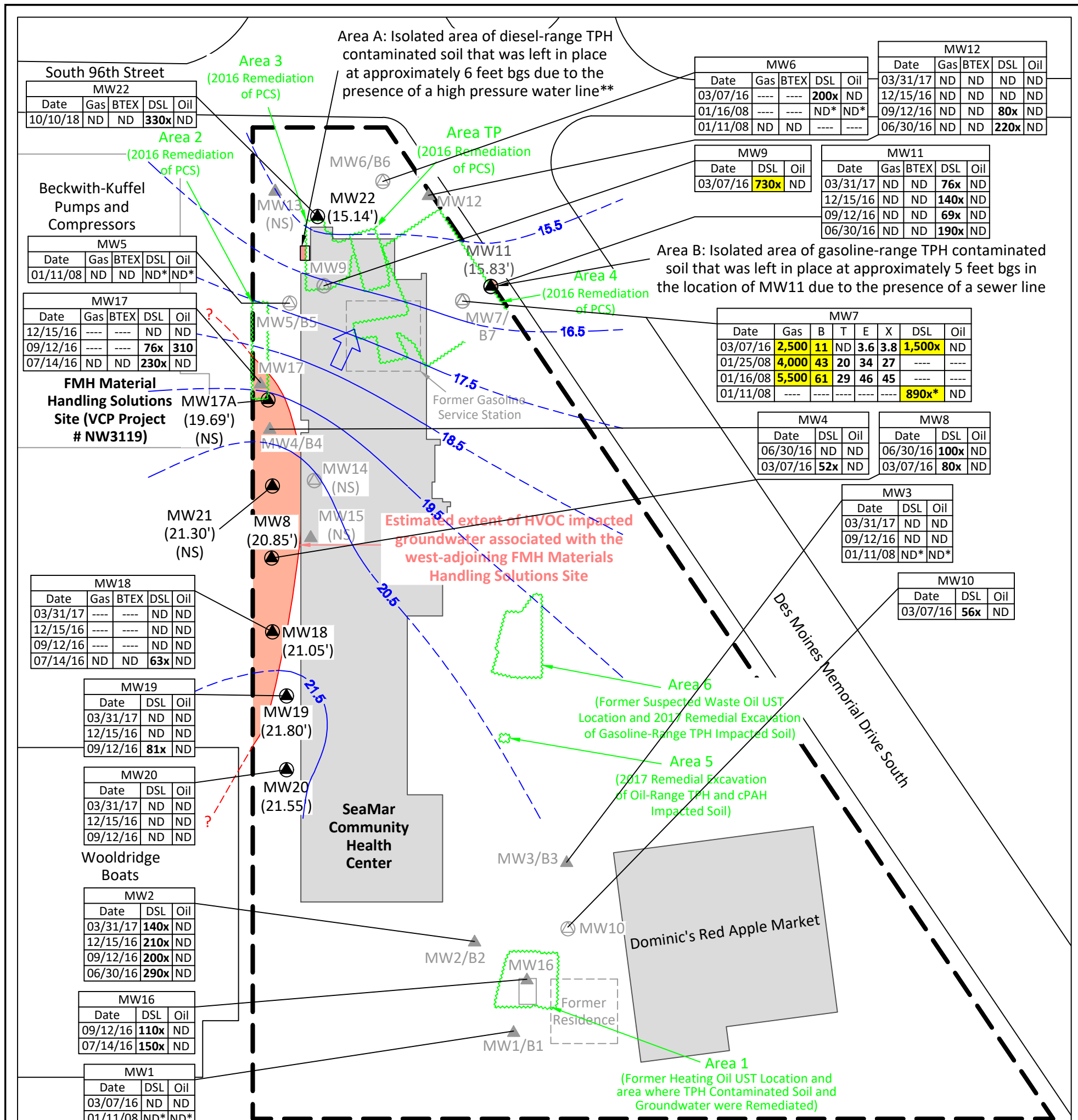
Note: Not all previous sampling locations on Property or west-adjointing property are shown here.

*Soil sample 3WSW6-6 was obtained from Area A and initially reported by the laboratory to contain a gasoline-range TPH concentration of 530 mg/kg, which exceeded the MTCA soil cleanup level. However, subsequent evaluation of the analysis and chromatogram associated with sample 3WSW6-6 indicated that only diesel-range TPH (330x mg/kg) was present in the sample and the concentration was below the MTCA soil cleanup level of 2,000 mg/kg. The laboratory evaluation will be presented in the forthcoming Property Closure Report.

- = Remedial excavation boundary
- HVOC** = Halogenated volatile organic compounds. Trichloroethene and vinyl chloride are present in groundwater at the western portion of the Property at concentrations exceeding applicable MTCA groundwater cleanup levels.
- = Soil vapor well installed by RGI
- = Monitoring well on west-adjointing property installed by others
- = Monitoring well properly decommissioned by RGI
- = Monitoring well destroyed during construction
- = (in black) Existing groundwater monitoring well previously installed by RGI
- = Property boundary



	Corporate Office 17522 Bothell Way Northeast Bothell, Washington 98011 Phone: 425.415.0551 Fax: 425.415.0311		Sea Mar Community Health Center		Figure 1
	RGI Project Number 2016-023A		Property Representation		Date Drawn: 01/2021
	Address: 9635 Des Moines Memorial Drive South, Seattle, Washington 98108				



Note: Analytical data pertaining to HVOC-impacted groundwater associated with the FMH Material Handling Solutions Site not displayed here.

**Soil sample 3WSW6-6 was obtained from Area A and initially reported by the laboratory to contain a gasoline-range TPH concentration of 530 mg/kg, which exceeded the MTCA soil cleanup level. However, subsequent evaluation of the analysis and chromatogram associated with sample 3WSW6-6 indicated that only diesel-range TPH (330x mg/kg) was present in the sample and the concentration was below the MTCA soil cleanup level of 2,000 mg/kg. The laboratory evaluation will be presented in the forthcoming Property Closure Report.

- | | | | |
|--|--|--|--|
| | | | |
|--|--|--|--|

 = Groundwater Analytical Results in micrograms/liter (ug/L);
- Gas = Gasoline total petroleum hydrocarbons
- BTEX = Benzene, toluene, ethylbenzene, xylenes
- DSL/Oil = Diesel/oil total petroleum hydrocarbons
- ND = Not detected above laboratory detection limits
- Bold and yellow highlighted results (if any) indicate groundwater concentration exceeds the applicable groundwater cleanup level
- (20.85') = Groundwater elevation based on 06/12/19 depth to water measurements and elevation survey
- = Groundwater flow direction
- 21.5 = Groundwater contours generated using Surfer Software (based on Kriging method). Contours based on 06/12/19 water level measurements.
- = Remedial excavation boundary
- NS = Not sampled for petroleum related compounds. Applies to wells intended to assess the extent of HVOC impacted groundwater from the FMH Material Handling Solutions Site.
- * = Indicates analyzed using silica gel cleanup
- HVOC = Halogenated volatile organic compounds.
- TPH = Total petroleum hydrocarbons
- = Monitoring well properly decommissioned by RGI
- = Monitoring well destroyed during construction
- = (in black) Existing groundwater monitoring well
- = Property boundary

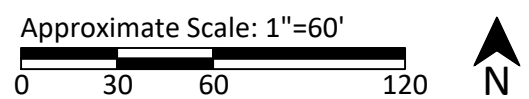


Table 1, Page 3 of 4. Summary of Groundwater Analytical Laboratory Results
Sea Mar Community Health Center
9635 Des Moines Memorial Drive South, Seattle, Washington 98108
The Riley Group, Inc. Project No. 2016-023A

Sample Number	Sample Date	Top of Casing (TOC) Elevation	Depth to Water (below TOC)	Groundwater Elevation	Analytical Data Pertaining to the SeaMar Community Health Center Property																	Analytical Data pertaining to the FMH Materials Handling Solutions Site												
					Gasoline TPH	BTEX				Diesel TPH	Oil TPH	Diesel TPH	Oil TPH	Total Metals					Dissolved Metals					PCE	TCE	cis-1,2-DCE	Trans-1,2-DCE	VC	1,1-DCE	EDC	Other HVOCs	Other VOCs	SVOCs	
						B	T	E	X					w/o silica gel	w/ silica gel	As	Cd	Cr	Pb	Hg	As	Cd	Cr											Pb
MW9-H2O	03/07/16	8.64	0.0	8.64	ND<100	----	----	----	----	730x	ND<300	----	----	----	ND<1	ND<1	ND<1	ND<1	----	----	----	----	ND<1	ND<1	ND<1	ND<1	ND<0.2	ND<1	ND<1	ND	----	----		
MW10 Screened Interval 9 - 14 ft bgs, Total boring depth 14 ft bgs, MW10 decommissioned 06/15/16.																																		
MW10	05/06/16	27.36	7.84	19.52	----	----	----	----	----	----	----	----	----	----	----	----	----	----	----	----	----	----	----	----	----	----	----	----	----	----	----	----	----	
MW10-H2O	03/07/16	27.36	5.965	21.4	----	----	----	----	----	56x	ND<250	----	----	----	----	----	----	----	----	----	----	----	----	----	----	----	----	----	----	----	----	----		
MW11 Screened Interval 5 - 15 ft bgs, Total boring depth 15 ft bgs, Destroyed and/or damaged during construction.																																		
MW11	06/12/19	20.26	4.43	15.83	Top of well casing was surveyed on June 12, 2019.																													
MW11	03/31/17	9.47	4.63	4.84	ND<100	ND<1	ND<1	ND<1	ND<3	76x	ND<280	----	----	----	----	----	----	----	ND<1	----	----	----	----	----	----	----	----	----	----	----	----	----		
MW11	12/15/16	9.47	4.74	4.73	ND<100	ND<1	ND<1	ND<1	ND<3	140x	ND<250	----	----	----	----	----	----	----	----	----	----	----	----	----	----	----	----	----	----	----	----	----		
MW11	09/12/16	9.47	----	----	ND<100	ND<1	ND<1	ND<1	ND<3	69x	ND<250	----	----	----	----	----	----	----	----	----	----	----	----	----	----	----	----	----	----	----	----	----		
MW11	07/15/16	9.47	4.51	4.96	----	----	----	----	----	----	----	----	----	----	----	----	----	----	----	----	----	----	----	----	----	----	----	----	----	----	----	----		
MW11	06/30/16	9.47	5.17	4.30	ND<100	ND<1	ND<1	ND<1	ND<3	190x	ND<250	----	----	----	----	----	----	----	----	----	----	----	----	----	----	----	----	----	----	----	----	----		
MW11	05/06/16	9.47	4.77	4.70	ND<100	1.7	ND<1	ND<1	ND<3	200x	ND<250	----	----	----	----	----	----	----	----	----	----	----	----	----	----	----	----	----	----	----	----	----		
MW12 Screened Interval 5 - 15 ft bgs, Total boring depth 15 ft bgs, Destroyed and/or damaged during construction.																																		
MW12	03/31/17	7.64	2.78	4.86	ND<100	ND<1	ND<1	ND<1	ND<3	ND<60	ND<300	----	----	----	----	----	----	----	1.28	----	----	----	----	----	----	----	----	----	----	----	----	----		
MW12	12/15/16	7.64	2.47	5.17	ND<100	ND<1	ND<1	ND<1	ND<3	ND<80	ND<400	----	----	----	----	----	----	----	----	----	----	----	----	----	----	----	----	----	----	----	----	----		
MW12	09/12/16	7.64	3.44	4.20	ND<100	ND<1	ND<1	ND<1	ND<3	80x	ND<250	----	----	----	----	----	----	----	----	----	----	----	----	----	----	----	----	----	----	----	----	----		
MW12	07/15/16	7.64	2.63	5.01	----	----	----	----	----	----	----	----	----	----	----	----	----	----	----	----	----	----	----	----	----	----	----	----	----	----	----	----		
MW12	06/30/16	7.64	2.92	4.72	ND<100	ND<1	ND<1	ND<1	ND<3	220x	ND<250	----	----	----	----	----	----	----	----	----	----	----	----	----	----	----	----	----	----	----	----	----		
MW12	05/06/16	7.64	2.41	5.23	ND<100	ND<1	ND<1	ND<1	ND<3	200x	ND<250	----	----	----	----	----	----	----	----	----	----	----	----	----	----	----	----	----	----	----	----	----		
MW13 Screened Interval 3.25 - 13.25 ft bgs, Total boring depth 15 ft bgs, Destroyed and/or damaged during construction.																																		
MW13	09/12/16	----	----	----	Well Not Locatable																													
MW13	07/15/16	7.64	4.50	3.14	----	----	----	----	----	----	----	----	----	----	----	----	----	----	----	----	----	----	----	----	----	----	----	----	----	----	----	----		
MW13	06/30/16	7.64	4.34	3.30	----	----	----	----	----	----	----	----	----	----	----	----	----	----	----	ND<1	----	ND<1	----	ND<1	ND<1	ND<0.2	ND<1	ND<1	ND	----	----			
MW13	05/06/16	7.64	4.62	3.02	----	----	----	----	----	----	----	----	----	ND<1	----	5.32	----	----	ND<1	----	ND<1	----	ND<1	ND<1	ND<0.2	ND<1	ND<1	ND	----	----				
MW14 Screened Interval 5-15 ft bgs, Total boring depth 15.5 ft bgs, MW14 decommissioned 07/25/18.																																		
MW14	07/02/18	14.65	----	----	----	----	----	----	----	----	----	----	----	----	----	----	----	----	----	----	----	----	ND<2.0	ND<2.0	ND<2.0	ND<2.0	ND<0.20	ND<2.0	ND<1	----	DCF=3.1	----		
MW14	03/23/18	14.65	----	----	----	----	----	----	----	----	----	----	----	----	----	----	----	----	----	----	----	----	ND<2.0	ND<2.0	ND<2.0	ND<0.20	----	----	----	----	----			
MW14	03/31/17	14.65	5.02	9.63	----	----	----	----	----	----	----	----	----	----	----	----	----	----	1.31	----	----	----	ND<1	ND<1	ND<1	ND<1	ND<0.2	ND<1	ND<1	ND	----	----		
MW14	12/15/16	14.65	5.03	9.62	----	----	----	----	----	----	----	----	----	----	----	----	----	----	----	----	----	----	ND<1	ND<1	ND<1	ND<1	ND<0.2	ND<1	ND<1	ND	----	----		
MW14	09/12/16	14.65	5.82	8.83	----	----	----	----	----	----	----	----	----	----	----	----	----	----	----	----	----	----	ND<1	ND<1	ND<1	ND<1	ND<0.2	ND<1	ND<1	ND	----	----		
MW14	07/15/16	14.65	5.60	9.05	----	----	----	----	----	----	----	----	----	----	----	----	----	----	----	----	----	----	----	----	----	----	----	----	----	----	----	----		
MW14	06/30/16	14.65	5.11	9.54	----	----	----	----	----	----	----	----	----	----	----	----	----	----	----	----	----	----	ND<1	ND<1	ND<1	ND<1	ND<0.2	ND<1	ND<1	ND	----	----		
MW14	05/06/16	14.65	4.64	10.01	----	----	----	----	----	----	----	----	----	----	----	----	----	----	----	----	----	----	ND<1	ND<1	ND<1	ND<1	ND<0.2	ND<1	ND<1	ND	----	----		
MW15 Screened Interval 5.75 - 15.75 ft bgs, Total boring depth 17 ft bgs, Destroyed and/or damaged during construction.																																		
MW15	12/15/16	14.73	4.39	10.34	----	----	----	----	----	----	----	----	----	----	----	----	----	----	----	----	----	----	ND<1	ND<1	ND<1	ND<1	ND<0.2	ND<1	ND<1	ND	----	----		
MW15	09/12/16	14.73	5.16	9.57	----	----	----	----	----	----	----	----	----	----	----	----	----	----	----	----	----	----	ND<1	ND<1	ND<1	ND<1	ND<0.2	ND<1	ND<1	ND	----	----		
MW15	07/15/16	14.73	5.04	9.69	----	----	----	----	----	----	----	----	----	----	----	----	----	----	----	----	----	----	----	----	----	----	----	----	----	----	----	----		
MW15	06/30/16	14.73	4.65	10.08	----	----	----	----	----	----	----	----	----	----	----	----	----	----	----	----	----	----	ND<1	ND<1	ND<1	ND<1	ND<0.2	ND<1	ND<1	ND	----	----		
MW15	05/06/16	14.73	4.31	10.42	----	----	----	----	----	----	----	----	----	----	----	----	----	----	----	----	----	----	ND<1	ND<1	ND<1	ND<1	ND<0.2	ND<1	ND<1	ND	----	----		
MW16 Screened Interval 9 - 19 ft bgs, Total boring depth 20 ft bgs, Destroyed and/or damaged during construction.																																		
MW16	09/12/16	22.03	2.24	19.79	----	----	----	----	----	110x	ND<250	----	----	----	----	----	----	----	----	----	----	----	----	----	----	----	----	----	----	----	----	----		
MW16-W	07/14/16	22.03	2.10	19.93	----	----	----	----	----	150x	ND<250	----	----	----	----	----	----	----	----	----	----	----	----	----	----	----	----	----	----	----	----	----		
MW17 Screened Interval 5 - 15 ft bgs, Total boring depth 15 ft bgs, Destroyed and/or damaged during construction.																																		
MW17	12/15/16	11.52	6.00	5.52	----	----	----	----	----	ND<50	ND<250	----	----	----	----	----	----	----	----	----	----	----	ND<1	ND<1	ND<1	ND<1	ND<0.2	ND<1	ND<1	ND	----	ND		
MW17	09/12/16	11.52	3.01	8.51	----	----	----	----	----	76x	310	----	----	----	----	----	----	----	----	----	----	----	ND<1	ND<1	ND<1	ND<1	ND<0.2	ND<1	ND<1	ND	----	----		
MW17-W	07/14/16	11.52	3.01	8.51	ND<100	ND<0.35	ND<1	ND<1	ND<3	230x	ND<260	----	----	----	----	----	----	----	----	----	----	----	ND<1	ND<1	ND<1	ND<1	ND<0.2	ND<1	ND<1	ND	ND	----		
MTCA Method A Cleanup Levels for Ground Water					800/1,000 ¹	5	1,000	700	1,000	500	500	500	500	5	5	50	15	2	5	5	50	15	2	5	5	----	----	0.2	----	5	Analyte Specific	Analyte Specific	Analyte Specific	
ARAR - State and Federal Primary MCLs					----	----	----	----	----	----	----	----	----	----	----	----	----	----	----	----	----	----	----	5	5	70	100	2	7	5	----	----	----	
MTCA Method B Cleanup Levels for Ground Water ²					----	----	----	----	----	----	----	----	----	----	----	----	----	----	----	----	----	----	----	----	----	----	16	160	----	400	----	----	DCF = 1,600	----

Table 1, Page 4 of 4. Summary of Groundwater Analytical Laboratory Results

Sea Mar Community Health Center

9635 Des Moines Memorial Drive South, Seattle, Washington 98108

The Riley Group, Inc. Project No. 2016-023A

Notes:

Samples collected by RGI and others using a peristaltic pump under low-flow conditions.

Unless otherwise noted, all analytical results are given in micrograms per liter (ug/L), equivalent to parts per billion (ppb).

Gasoline TPH (total petroleum hydrocarbons) determined using Northwest Test Method NWTPH-Gx

BTEX (benzene, toluene, ethylbenzene, and xylenes) determined using EPA Test Method 8021B or 8260C.

Diesel and Oil TPH (total petroleum hydrocarbons) determined using Northwest Test Method NWTPH-Dx with and without silica gel cleanup.

PCE (tetrachloroethene), TCE (trichloroethene), cis-1,2-DCE (cis-1,2-dichloroethene), trans-1,2-DCE (trans-1,2-dichloroethene), VC (vinyl chloride), 1,1-DCE (1,1-dichloroethene), EDC (1,2-dichloroethane), CE (Chloroethane), EDC (1,2-Dichloroethane), 1,3-DCB (1,3-Dichlorobenzene), 1,1-DCA (1,1-Dichloroethane), DCF (Dichlorodifluoromethane), Naph (Naphthalene), and other HVOCs (halogenated volatile organic compounds) determined using EPA Test Method 8260C.

Other VOCs (volatile organic compounds) determined using EPA Test Method 8260C.

SVOCs (semi-volatile organic compounds) determined using EPA Test Method 8270C SIM.

Dissolved Metals (As = arsenic, Cd = cadmium, Cr = chromium, Pb = lead, Hg = mercury) determined using EPA Method 200.8 and 1631E.

ND = Not detected above the noted analytical detection limit.

---- = Not analyzed or not applicable.

x = The sample chromatographic pattern does not resemble the fuel standard used for quantitation.

Washington State Department of Ecology (Ecology) Model Toxics Control Act (MTCA) Method A Cleanup Levels for Ground Water (WAC 173-340-900, Table 720-1). MTCA Method B Standard Formula Values for Ground Water from Ecology's Cleanup Level and Risk Calculation (CLARC) database.

ARAR = Applicable or Relevant Appropriate Requirement. ARARs for the Property are the Federal and State Primary Maximum Contaminant Levels (MCLs) as established under the Environmental Protection Agency (EPA) National Primary Drinking Water Regulations.

¹ The higher cleanup level is applicable if no benzene is detected in groundwater.

² No MTCA Method A Cleanup Level or ARAR has been established. Therefore, the MTCA Method B Standard Formula Value is listed for reference. The carcinogenic value is referenced when available.

*TPH results based on Ecology's petroleum hydrocarbon qualitative test method NWTPH-HCID.

Bold results indicated concentrations above laboratory detection limits.

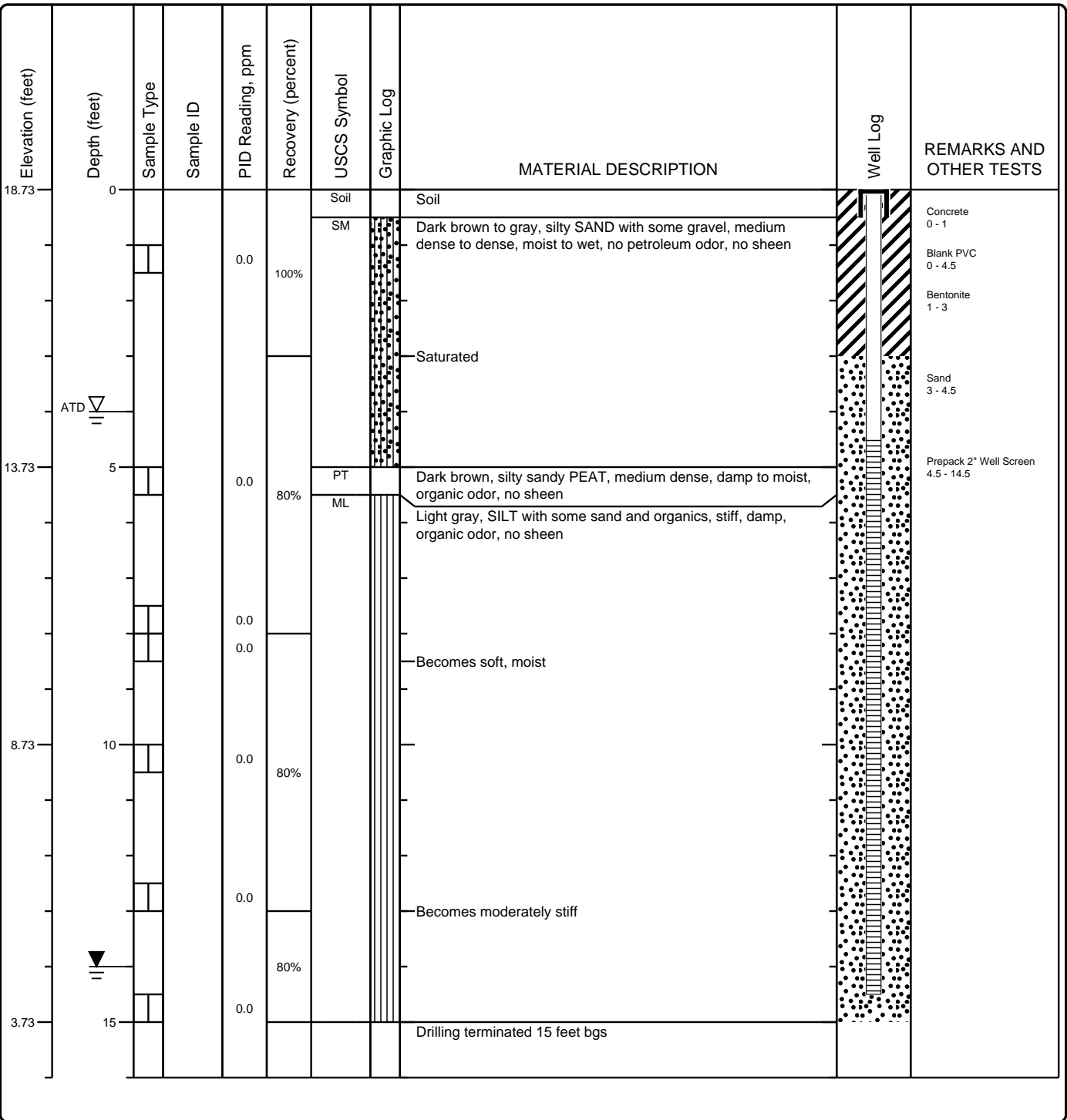
Bold and yellow highlighted results indicate concentrations (if any) that exceed applicable MTCA groundwater cleanup levels.

Project Name: **Dominic's Plaza (Sea Mar Community Health Center)**
 Project Number: **2016-023A**
 Client: **SeaMar Community Health Centers**



Well No.: **MW22 (BKZ204)**
 Sheet 1 of 1

Date(s) Drilled: 10/02/18	Logged By: LC	Surface Conditions: Top Soil
Drilling Method(s): Direct Push	Drill Bit Size/Type:	Total Depth of Borehole: 15'
Drill Rig Type: Geoprobe 7730 DT	Drilling Contractor: RGI	Approximate Surface Elevation (feet amsl): 18.73'
Groundwater Level: 16.24' on 10/10/18	Sampling Method(s): Continuous	Hammer Data : n/a
Borehole Backfill: n/a	Location: 9635 Des Moines Memorial Drive South, Seattle, Washington 98108	



Project Name: **Dominic's Plaza (Sea Mar Community Health Center)**
 Project Number: **2016-023A**
 Client: **SeaMar Community Health Centers**



Boring Log Key
Sheet 1 of 1

Elevation (feet)	Depth (feet)	Sample Type	Sample ID	PID Reading, ppm	Recovery (percent)	USCS Symbol	Graphic Log	MATERIAL DESCRIPTION	Well Log	REMARKS AND OTHER TESTS
1	2	3	4	5	6	7	8	9	10	11


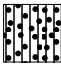

COLUMN DESCRIPTIONS

- | | |
|--|---|
| <p>1 Elevation (feet): Elevation (MSL, feet).
 2 Depth (feet): Depth in feet below the ground surface.
 3 Sample Type: Type of soil sample collected at the depth interval shown.
 4 Sample ID: Sample identification number.
 5 PID Reading, ppm: The reading from a photo-ionization detector, in parts per million.
 6 Recovery (percent): Percent Recovery</p> | <p>7 USCS Symbol: USCS symbol of the subsurface material.
 8 Graphic Log: Graphic depiction of the subsurface material encountered.
 9 MATERIAL DESCRIPTION: Description of material encountered. May include consistency, moisture, color, and other descriptive text.
 10 Well Log: Graphical representation of well installed upon completion of drilling and sampling.
 11 REMARKS AND OTHER TESTS: Comments and observations regarding drilling or sampling made by driller or field personnel.</p> |
|--|---|








FIELD AND LABORATORY TEST ABBREVIATIONS

<p>CHEM: Chemical tests to assess corrosivity COMP: Compaction test CONS: One-dimensional consolidation test LL: Liquid Limit, percent</p>	<p>PI: Plasticity Index, percent SA: Sieve analysis (percent passing No. 200 Sieve) UC: Unconfined compressive strength test, Qu, in ksf WA: Wash sieve (percent passing No. 200 Sieve)</p>
---	--





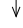
MATERIAL GRAPHIC SYMBOLS

- | | |
|--|---|
|  Bentonite |  Silty SAND (SM) |
|  SILT, SILT w/SAND, SANDY SILT (ML) |  Poorly graded SAND (SP) |

TYPICAL SAMPLER GRAPHIC SYMBOLS

- | | |
|---|---|
|  Auger sampler |  Grab Sample |
|  Bulk Sample |  2.5-inch-OD Modified California w/ brass liners |
|  3-inch-OD California w/ brass rings |  Pitcher Sample |
|  CME Sampler | |

OTHER GRAPHIC SYMBOLS

- | |
|--|
|  Water level (at time of drilling, ATD) |
|  Water level (after waiting) |
|  Minor change in material properties within a stratum |
|  Inferred/gradational contact between strata |
|  Queried contact between strata |

GENERAL NOTES

1: Soil classifications are based on the Unified Soil Classification System. Descriptions and stratum lines are interpretive, and actual lithologic changes may be gradual. Field descriptions may have been modified to reflect results of lab tests.
 2: Descriptions on these logs apply only at the specific boring locations and at the time the borings were advanced. They are not warranted to be representative of subsurface conditions at other locations or times.

FRIEDMAN & BRUYA, INC.

ENVIRONMENTAL CHEMISTS

James E. Bruya, Ph.D.
Yelena Aravkina, M.S.
Michael Erdahl, B.S.
Arina Podnozova, B.S.
Eric Young, B.S.

3012 16th Avenue West
Seattle, WA 98119-2029
(206) 285-8282
fbi@isomedia.com
www.friedmanandbruya.com

October 16, 2018

Jerry Sawetz, Project Manager
The Riley Group, Inc.
17522 Bothell Way NE
Bothell, WA 98011

Dear Mr Sawetz:

Included are the results from the testing of material submitted on October 10, 2018 from the SeaMar 2016-023A, F&BI 810210 project. There are 6 pages included in this report. Any samples that may remain are currently scheduled for disposal in 30 days. If you would like us to return your samples or arrange for long term storage at our offices, please contact us as soon as possible.

We appreciate this opportunity to be of service to you and hope you will call if you have any questions.

Sincerely,

FRIEDMAN & BRUYA, INC.



Michael Erdahl
Project Manager

Enclosures
TRG1016R.DOC

FRIEDMAN & BRUYA, INC.

ENVIRONMENTAL CHEMISTS

CASE NARRATIVE

This case narrative encompasses samples received on October 10, 2018 by Friedman & Bruya, Inc. from the The Riley Group SeaMar 2016-023A, F&BI 810210 project. Samples were logged in under the laboratory ID's listed below.

<u>Laboratory ID</u>	<u>The Riley Group</u>
810210 -01	MW22

All quality control requirements were acceptable.

FRIEDMAN & BRUYA, INC.

ENVIRONMENTAL CHEMISTS

Date of Report: 10/16/18
Date Received: 10/10/18
Project: SeaMar 2016-023A, F&BI 810210
Date Extracted: 10/11/18
Date Analyzed: 10/11/18

**RESULTS FROM THE ANALYSIS OF WATER SAMPLES
FOR BENZENE, TOLUENE, ETHYLBENZENE,
XYLENES AND TPH AS GASOLINE
USING METHODS 8021B AND NWTPH-Gx**

Results Reported as ug/L (ppb)

<u>Sample ID</u> Laboratory ID	<u>Benzene</u>	<u>Toluene</u>	<u>Ethyl Benzene</u>	<u>Total Xylenes</u>	<u>Gasoline Range</u>	<u>Surrogate (% Recovery)</u> (Limit 52-124)
MW22 810210-01	<1	<1	<1	<3	<100	90
Method Blank 08-2266 MB	<1	<1	<1	<3	<100	89

FRIEDMAN & BRUYA, INC.

ENVIRONMENTAL CHEMISTS

Date of Report: 10/16/18
Date Received: 10/10/18
Project: SeaMar 2016-023A, F&BI 810210
Date Extracted: 10/11/18
Date Analyzed: 10/11/18

**RESULTS FROM THE ANALYSIS OF WATER SAMPLES
FOR TOTAL PETROLEUM HYDROCARBONS AS
DIESEL AND MOTOR OIL
USING METHOD NWTPH-Dx**
Results Reported as ug/L (ppb)

<u>Sample ID</u> Laboratory ID	<u>Diesel Range</u> (C ₁₀ -C ₂₅)	<u>Motor Oil Range</u> (C ₂₅ -C ₃₆)	<u>Surrogate</u> (% Recovery) (Limit 47-140)
MW22 810210-01	330 x	<250	93
Method Blank 08-2296 MB	<50	<250	87

FRIEDMAN & BRUYA, INC.

ENVIRONMENTAL CHEMISTS

Date of Report: 10/16/18

Date Received: 10/10/18

Project: SeaMar 2016-023A, F&BI 810210

**QUALITY ASSURANCE RESULTS FOR THE ANALYSIS OF WATER
SAMPLES FOR BENZENE, TOLUENE, ETHYLBENZENE,
XYLENES, AND TPH AS GASOLINE
USING EPA METHOD 8021B AND NWTPH-Gx**

Laboratory Code: 810182-02 (Matrix Spike)

Analyte	Reporting Units	Spike Level	Sample Result	Percent Recovery MS	Percent Recovery MSD	Acceptance Criteria	RPD (Limit 20)
Benzene	ug/L (ppb)	50	<1	106	108	50-150	2
Toluene	ug/L (ppb)	50	<1	106	110	50-150	4
Ethylbenzene	ug/L (ppb)	50	<1	112	114	50-150	2
Xylenes	ug/L (ppb)	150	<3	107	107	50-150	0
Gasoline	ug/L (ppb)	1,000	<100	97	101	53-117	4

Laboratory Code: Laboratory Control Sample

Analyte	Reporting Units	Spike Level	Percent Recovery LCS	Acceptance Criteria
Benzene	ug/L (ppb)	50	110	65-118
Toluene	ug/L (ppb)	50	110	72-122
Ethylbenzene	ug/L (ppb)	50	114	73-126
Xylenes	ug/L (ppb)	150	107	74-118
Gasoline	ug/L (ppb)	1,000	95	69-134

FRIEDMAN & BRUYA, INC.

ENVIRONMENTAL CHEMISTS

Date of Report: 10/16/18

Date Received: 10/10/18

Project: SeaMar 2016-023A, F&BI 810210

**QUALITY ASSURANCE RESULTS FOR THE ANALYSIS OF WATER
SAMPLES FOR TOTAL PETROLEUM HYDROCARBONS AS
DIESEL EXTENDED USING METHOD NWTPH-D_x**

Laboratory Code: 810182-02 (Matrix Spike)

Analyte	Reporting Units	Spike Level	Sample Result	Percent Recovery MS	Percent Recovery MSD	Acceptance Criteria	RPD (Limit 20)
Diesel Extended	ug/L (ppb)	2,500	530	96	106	64-141	10

Laboratory Code: Laboratory Control Sample

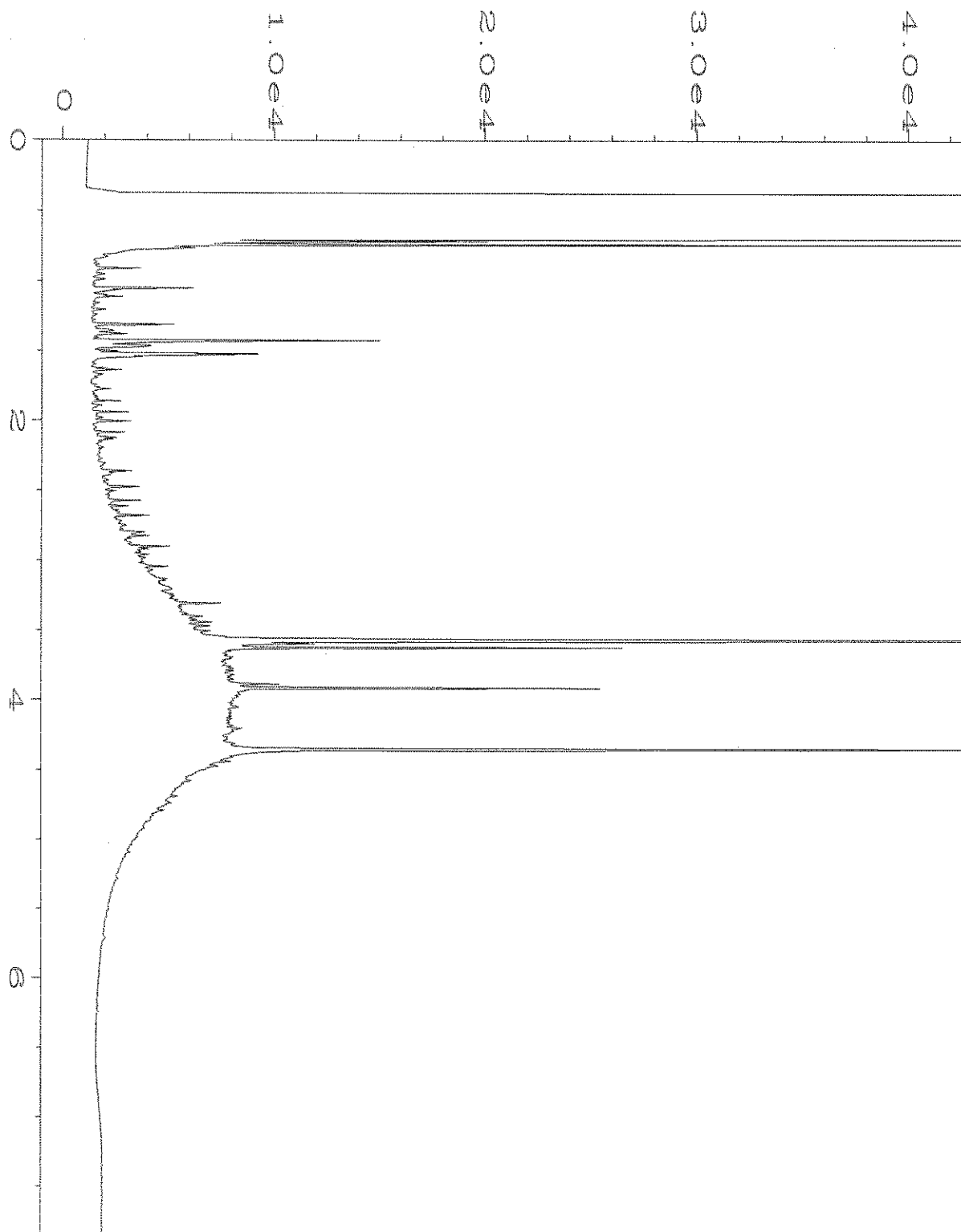
Analyte	Reporting Units	Spike Level	Percent Recovery LCS	Acceptance Criteria
Diesel Extended	ug/L (ppb)	2,500	100	61-133

FRIEDMAN & BRUYA, INC.

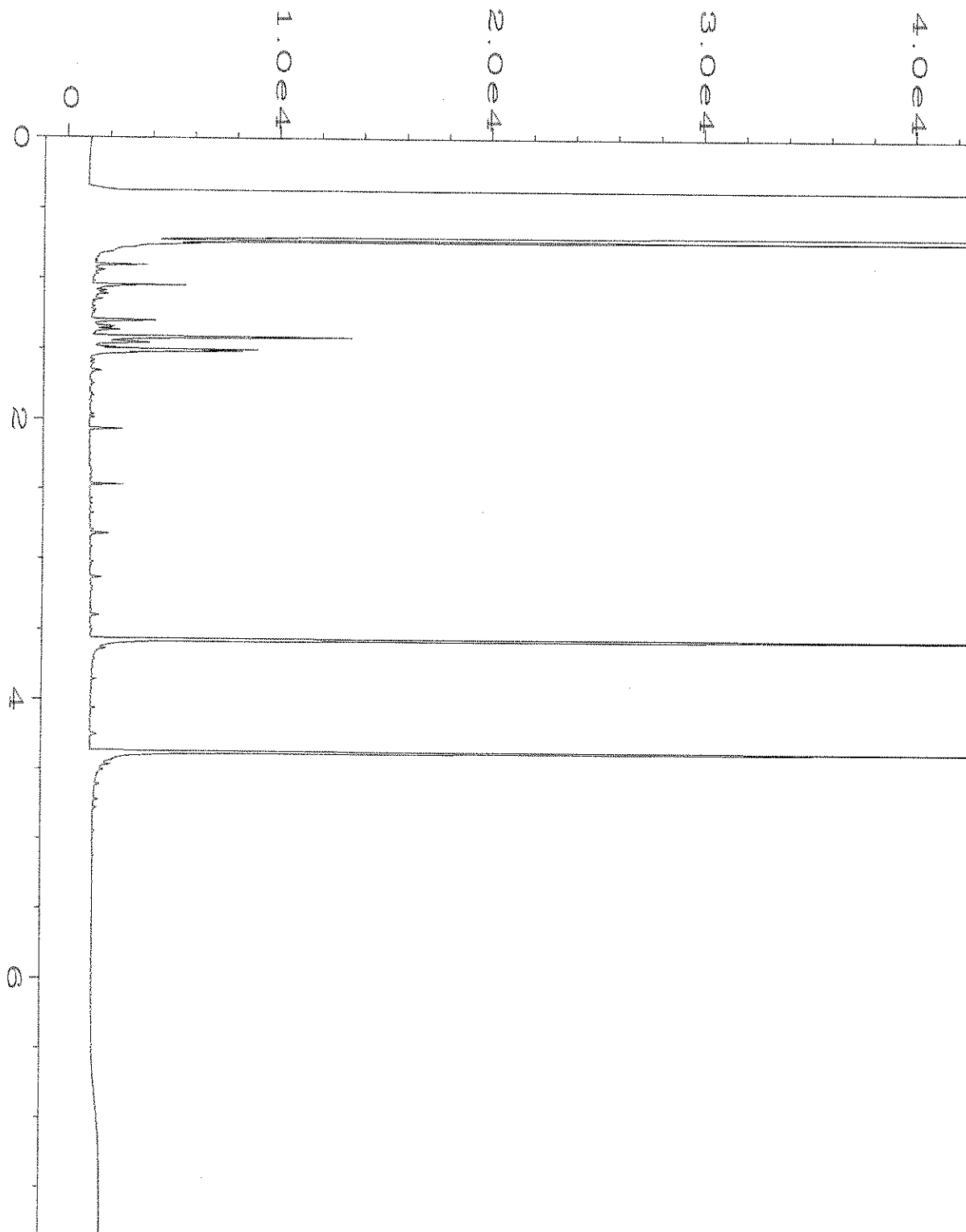
ENVIRONMENTAL CHEMISTS

Data Qualifiers & Definitions

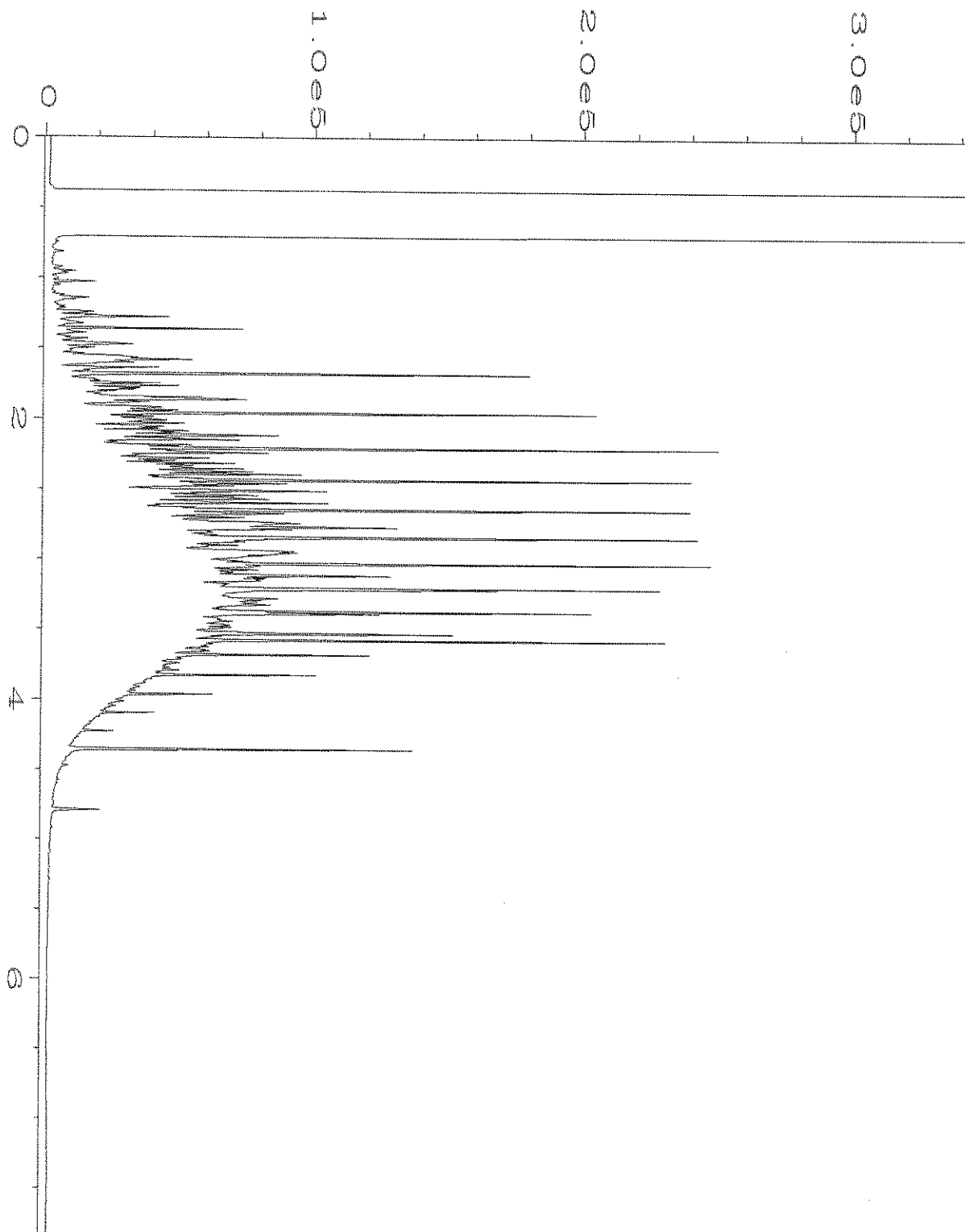
- a - The analyte was detected at a level less than five times the reporting limit. The RPD results may not provide reliable information on the variability of the analysis.
- b - The analyte was spiked at a level that was less than five times that present in the sample. Matrix spike recoveries may not be meaningful.
- ca - The calibration results for the analyte were outside of acceptance criteria. The value reported is an estimate.
- c - The presence of the analyte may be due to carryover from previous sample injections.
- cf - The sample was centrifuged prior to analysis.
- d - The sample was diluted. Detection limits were raised and surrogate recoveries may not be meaningful.
- dv - Insufficient sample volume was available to achieve normal reporting limits.
- f - The sample was laboratory filtered prior to analysis.
- fb - The analyte was detected in the method blank.
- fc - The compound is a common laboratory and field contaminant.
- hr - The sample and duplicate were reextracted and reanalyzed. RPD results were still outside of control limits. Variability is attributed to sample inhomogeneity.
- hs - Headspace was present in the container used for analysis.
- ht - The analysis was performed outside the method or client-specified holding time requirement.
- ip - Recovery fell outside of control limits. Compounds in the sample matrix interfered with the quantitation of the analyte.
- j - The analyte concentration is reported below the lowest calibration standard. The value reported is an estimate.
- J - The internal standard associated with the analyte is out of control limits. The reported concentration is an estimate.
- jl - The laboratory control sample(s) percent recovery and/or RPD were out of control limits. The reported concentration should be considered an estimate.
- js - The surrogate associated with the analyte is out of control limits. The reported concentration should be considered an estimate.
- lc - The presence of the analyte is likely due to laboratory contamination.
- L - The reported concentration was generated from a library search.
- nm - The analyte was not detected in one or more of the duplicate analyses. Therefore, calculation of the RPD is not applicable.
- pc - The sample was received with incorrect preservation or in a container not approved by the method. The value reported should be considered an estimate.
- ve - The analyte response exceeded the valid instrument calibration range. The value reported is an estimate.
- vo - The value reported fell outside the control limits established for this analyte.
- x - The sample chromatographic pattern does not resemble the fuel standard used for quantitation.



Data File Name	: C:\HPCHEM\4\DATA\10-11-18\021F0501.D	Page Number	: 1
Operator	: TL	Vial Number	: 21
Instrument	: GC#4	Injection Number	: 1
Sample Name	: 810210-01	Sequence Line	: 5
Run Time Bar Code:		Instrument Method:	DX.MTH
Acquired on	: 11 Oct 18 03:47 PM	Analysis Method	: DX.MTH
Report Created on:	12 Oct 18 07:28 AM		



Data File Name	: C:\HPCHEM\4\DATA\10-11-18\015F0501.D	Page Number	: 1
Operator	: TL	Vial Number	: 15
Instrument	: GC#4	Injection Number	: 1
Sample Name	: 08-2296 mb	Sequence Line	: 5
Run Time Bar Code:		Instrument Method:	DX.MTH
Acquired on	: 11 Oct 18 02:37 PM	Analysis Method	: DX.MTH
Report Created on:	12 Oct 18 07:28 AM		



Data File Name	: C:\HPCHEM\4\DATA\10-11-18\005F0801.D	Page Number	: 1
Operator	: TL	Vial Number	: 5
Instrument	: GC#4	Injection Number	: 1
Sample Name	: 1000 Dx 55-27B	Sequence Line	: 8
Run Time Bar Code:		Instrument Method:	DX.MTH
Acquired on	: 11 Oct 18 07:12 PM	Analysis Method	: DX.MTH
Report Created on:	12 Oct 18 07:32 AM		

