



Project: 700 Dexter Property
Project Number: 0797-001
Logged by: RAH
Date Started: 8/14/12
Surface Conditions: Concrete
Well Location N/S: 84.7' south of SE corner of 700 Dexter
Well Location E/W: 112' west of SE corner of 700 Dexter
Reviewed by: CCC
Date Completed: 08/16/12

BORING LOG | **B106**
 MW106

Site Address: 700 Dexter Avenue North
 Seattle, Washington

Water Depth At Time of Drilling -- feet bgs
 Water Depth After Completion -- feet bgs

Depth (feet bgs)	Interval	Blow Count	% Recovery	PID (ppmv)	Sample ID	USCS Class	Graphic	Lithologic Description	Well Construction Detail
90				0.0	B106-90	SP-SM		Wet, dense, medium to fine SAND with silt, dark gray, no solvent or hydrocarbon odor (10-90-0).	
				0.0		SP-SM		Wet, dense, medium to fine SAND with silt, dark gray, no solvent or hydrocarbon odor (10-90-0).	
			100	0.0		SP-SM		Wet, dense, medium to fine SAND with silt, dark gray, no solvent or hydrocarbon odor (10-90-0).	
				0.0		SP-SM		Wet, dense, medium to fine SAND with silt, dark gray, no solvent or hydrocarbon odor (10-90-0).	
95				0.0		SP-SM		Wet, dense, medium to fine SAND with silt, dark gray, no solvent or hydrocarbon odor (10-90-0).	
			100	0.0		SP-SM		Wet, dense, medium to fine SAND with silt, dark gray, no solvent or hydrocarbon odor (10-90-0).	
				0.0		SP-SM		Wet, dense, medium to fine SAND with silt, dark gray, no solvent or hydrocarbon odor (10-90-0).	
100				0.0	B106-100	SP-SM		Wet, dense, medium to fine SAND with silt and gravel, dark brown, no solvent or hydrocarbon odor (10-85-5).	
				0.0		SP-SM		Wet, dense, medium to fine SAND with silt and gravel, dark brown, no solvent or hydrocarbon odor (10-85-5).	
			100	0.0		SP-SM		Wet, dense, medium to fine SAND with silt and gravel, dark brown, no solvent or hydrocarbon odor (10-85-5).	
				0.0		SP-SM		Wet, dense, medium to fine SAND with silt and gravel, dark brown, no solvent or hydrocarbon odor (10-85-5).	
105				0.0		SP-SM		Wet, dense, medium to fine SAND with silt and gravel, dark brown, no solvent or hydrocarbon odor (10-85-5).	

Drilling Co./Driller: Major Drilling/Dan
Drilling Equipment: LAR Sonic
Sampler Type: Core Barrel
Hammer Type/Weight: -- lbs
Total Boring Depth: 140 feet bgs
Total Well Depth: 140 feet bgs
State Well ID No.: BCK 019

Well/Auger Diameter: 2/8.6 inches
Well Screened Interval: 130 to 140 feet bgs
Screen Slot Size: 0.010 inches
Filter Pack Used: Colorado Silica Sand
Surface Seal: Concrete
Annular Seal: Bentonite grout
Monument Type: Flush Mount

Notes/Comments:



Project: 700 Dexter Property
Project Number: 0797-001
Logged by: RAH
Date Started: 8/14/12
Surface Conditions: Concrete
Well Location N/S: 84.7' south of SE corner of 700 Dexter
Well Location E/W: 112' west of SE corner of 700 Dexter
Reviewed by: CCC
Date Completed: 08/16/12

BORING LOG | **B106**
 MW106

Site Address: 700 Dexter Avenue North
 Seattle, Washington

Water Depth At Time of Drilling -- feet bgs
 Water Depth After Completion -- feet bgs

Depth (feet bgs)	Interval	Blow Count	% Recovery	PID (ppmv)	Sample ID	USCS Class	Graphic	Lithologic Description	Well Construction Detail
105				0.0		SP-SM		Moist, dense, coarse to medium SAND with silt and gravel, gray, no solvent or hydrocarbon odor (10-85-5).	
			100	0.0		SP-SM		Moist, dense, coarse to medium SAND with silt and gravel, gray, no solvent or hydrocarbon odor (10-85-5).	
				0.0		SP-SM		Moist, dense, coarse to medium SAND with silt and gravel, gray, no solvent or hydrocarbon odor (10-90-0).	
				0.0		SP-SM		Moist, dense, coarse to medium SAND with silt and gravel, gray, no solvent or hydrocarbon odor (10-90-0).	
110				0.0	B106-110	SP-SM		Wet, dense, coarse to medum SAND with silt, gray, no solvent or hydrocarbon odor (10-90-0).	
				0.0		SP-SM		Wet, dense, coarse to medum SAND with silt, gray, no solvent or hydrocarbon odor (10-90-0).	
				0.0		SP-SM		Wet, dense, medum to fine SAND with silt, gray, no solvent or hydrocarbon odor (10-90-0).	
			100	0.0		SP-SM		Wet, dense, medum to fine SAND with silt, gray, no solvent or hydrocarbon odor (10-90-0).	
115				0.0		SP-SM		Wet, dense, fine to medium SAND with silt, dark gray, no solvent or hydrocarbon odor (10-90-0).	
				0.0		SP-SM		Wet, dense, fine to medium SAND with silt, dark gray, no solvent or hydrocarbon odor (10-90-0).	
				0.0		SP-SM		Wet, dense, fine to medium SAND with silt and trace gravel, dark gray, no solvent or hydrocarbon odor (10-87-03).	
120				0.0		SP-SM		Wet, dense, fine to medium SAND with silt and trace gravel, dark gray, no solvent or hydrocarbon odor (10-87-03).	

Drilling Co./Driller: Major Drilling/Dan
Drilling Equipment: LAR Sonic
Sampler Type: Core Barrel
Hammer Type/Weight: -- lbs
Total Boring Depth: 140 feet bgs
Total Well Depth: 140 feet bgs
State Well ID No.: BCK 019

Well/Auger Diameter: 2/8,6 Inches
Well Screened Interval: 130 to 140 feet bgs
Screen Slot Size: 0.010 inches
Filter Pack Used: Colorado Silica Sand
Surface Seal: Concrete
Annular Seal: Bentonite grout
Monument Type: Flush Mount

Notes/Comments:



Project: 700 Dexter Property
Project Number: 0797-001
Logged by: RAH
Date Started: 8/14/12
Surface Conditions: Concrete
Well Location N/S: 84.7' south of SE corner of 700 Dexter
Well Location E/W: 112' west of SE corner of 700 Dexter
Reviewed by: CCC
Date Completed: 08/16/12

BORING LOG | **B106**
 MW106

Site Address: 700 Dexter Avenue North
 Seattle, Washington

Water Depth At Time of Drilling -- feet bgs
 Water Depth After Completion -- feet bgs

Depth (feet bgs)	Interval	Blow Count	% Recovery	PID (ppmv)	Sample ID	USCS Class	Graphic	Lithologic Description	Well Construction Detail
120				0.0	B106-120	SP-SM		Wet, dense, medium SAND gravel with silt, dark gray, no solvent or hydrocarbon odor (10-70-10).	
			100	0.0		SP-SM		Wet, dense, coarse, medium SAND with gravel and silt, dark gray, no solvent or hydrocarbon odor (10-50-10).	
				0.0		SP-SM		Wet, dense, medium SAND with silt, dark gray, no solvent or hydrocarbon odor (10-90-0).	
				0.0		SP-SM		Wet, dense, medium SAND with silt, dark gray, no solvent or hydrocarbon odor (10-90-0).	
125				0.0		SP-SM		Wet, dense, fine to medium SAND with silt, dark gray, no solvent or hydrocarbon odor (10-90-0).	
			100	0.0		SP-SM		Wet, dense, fine to medium SAND with silt, dark gray, no solvent or hydrocarbon odor (10-90-0).	
				0.0		SP		Wet, dense, gravelly, coarse to medium SAND with gravel and silt, dark gray, no solvent or hydrocarbon odor (5-60-35).	
				0.0		SP		Wet, dense, gravelly, coarse to medium SAND with gravel and silt, dark gray, no solvent or hydrocarbon odor (5-60-35).	
130				0.0	B106-130	GM		Wet, dense, silty sandy GRAVEL, dark gray, no solvent or hydrocarbon odor (25-25-50).	
				0.0		GM		Wet, dense, silty sandy GRAVEL, dark gray, no solvent or hydrocarbon odor (25-25-50).	
				0.0		GM		Wet, dense, silty sandy GRAVEL, dark gray, no solvent or hydrocarbon odor (25-25-50).	
				0.0		GM		Wet, dense, silty sandy GRAVEL, dark gray, no solvent or hydrocarbon odor (25-25-50).	
135				0.0		GM		Wet, dense, silty sandy GRAVEL, dark gray, no solvent or hydrocarbon odor (25-25-50).	

Drilling Co./Driller: Major Drilling/Dan
Drilling Equipment: LAR Sonic
Sampler Type: Core Barrel
Hammer Type/Weight: -- lbs
Total Boring Depth: 140 feet bgs
Total Well Depth: 140 feet bgs
State Well ID No.: BCK 019

Well/Auger Diameter: 2/8,6 inches
Well Screened Interval: 130 to 140 feet bgs
Screen Slot Size: 0.010 inches
Filter Pack Used: Colorado Silica Sand
Surface Seal: Concrete
Annular Seal: Bentonite grout
Monument Type: Flush Mount

Notes/Comments:



Project: 700 Dexter Property
Project Number: 0797-001
Logged by: RAH
Date Started: 8/14/12
Surface Conditions: Concrete
Well Location N/S: 84.7' south of SE corner of 700 Dexter
Well Location E/W: 112' west of SE corner of 700 Dexter
Reviewed by: CCC
Date Completed: 08/16/12

BORING LOG | **B106**
 MW106

Site Address: 700 Dexter Avenue North
 Seattle, Washington

Water Depth At Time of Drilling -- feet bgs
 Water Depth After Completion -- feet bgs

Depth (feet bgs)	Interval	Blow Count	% Recovery	PID (ppmv)	Sample ID	USCS Class	Graphic	Lithologic Description	Well Construction Detail
135					B106-140	SP-SM		Wet, dense, medium to fine SAND with gravel and silt, dark gray, no solvent or hydrocarbon odor (10-80-10).	
					SP-SM	Wet, dense, medium to fine SAND with gravel and silt, dark gray, no solvent or hydrocarbon odor (10-80-10).			
					SP-SM	Wet, dense, medium SAND with gravel and silt, dark gray, no solvent or hydrocarbon odor (10-80-10).			
140					SP-SM	Wet, dense, medium SAND with gravel and silt, dark gray, no solvent or hydrocarbon odor (10-80-10).			
145								Boring terminated at 140 feet bgs, backfilled with bentonite grout from 2 feet to 118 feet depth. Two-inch diameter well installed to a depth of 140 feet bgs, screened from 130 to 140 feet bgs, with silica sand from 128 to 140 feet bgs, bentonite seal from 118 to 128 feet bgs, bentonite grout from 2 to 118 feet bgs, and finished with a flush-mounted monument and concrete seal. Completed as monitoring well MW106	
150									

Drilling Co./Driller: Major Drilling/Dan
Drilling Equipment: LAR Sonic
Sampler Type: Core Barrel
Hammer Type/Weight: -- lbs
Total Boring Depth: 140 feet bgs
Total Well Depth: 140 feet bgs
State Well ID No.: BCK 019

Well/Auger Diameter: 2/8,6 inches
Well Screened Interval: 130 to 140 feet bgs
Screen Slot Size: 0.010 inches
Filter Pack Used: Colorado Silica Sand
Surface Seal: Concrete
Annular Seal: Bentonite grout
Monument Type: Flush Mount

Notes/Comments:



Project: 700 Dexter
Project Number: 0797-001
Logged by: RAH
Date Started: 12/10/12
Surface Conditions: Gravel
Well Location N/S: 145.4' S of SE corner OF 700 Dexter bldg.
Well Location E/W: 75' W of SE corner OF 700 Dexter bldg.
Reviewed by: CCC
Date Completed: 12/10/12

BORING LOG | B114
MW114

Site Address: 700 Dexter Avenue North
 Seattle, Washington

Water Depth At Time of Drilling 30 feet bgs
Water Depth After Completion 17.05 feet bgs

Depth (feet bgs)	Interval	Blow Count	% Recovery	PID (ppmv)	Sample ID	USCS Class	Graphic	Lithologic Description	Well Construction Detail
0									
5	2 2 3		50	0.8		SP-SM (FILL)		Damp, loose, medium to fine SAND with gravel and silt, brown, no solvent or hydrocarbon odor (10-75-15). Fill material.	
10									
15									

Drilling Co./Driller: Cascade/Curtis
Drilling Equipment: HSA
Sampler Type: Dames and Moore
Hammer Type/Weight: 300 lbs
Total Boring Depth: 45.5 feet bgs
Total Well Depth: 45 feet bgs
State Well ID No.: BHS768

Well/Auger Diameter: 2/8.25 inches
Well Screened Interval: 35 to 45 feet bgs
Screen Slot Size: 0.010 inches
Filter Pack Used: 2/12 Silica Sand
Surface Seal: Concrete
Annular Seal: Bentonite
Monument Type: Flush mount

Notes/Comments:



Project: 700 Dexter
Project Number: 0797-001
Logged by: RAH
Date Started: 12/10/12
Surface Conditions: Gravel
Well Location N/S: 145.4' S of SE corner OF 700 Dexter bldg.
Well Location E/W: 75' W of SE corner OF 700 Dexter bldg.
Reviewed by: GCC
Date Completed: 12/10/12

BORING LOG | B114
MW114

Site Address: 700 Dexter Avenue North
 Seattle, Washington

Water Depth At Time of Drilling 30 feet bgs

Water Depth After Completion 17.05 feet bgs

Depth (feet bgs)	Interval	Blow Count	% Recovery	PID (ppmv)	Sample ID	USCS Class	Graphic	Lithologic Description	Well Construction Detail
15	50/5"		100	0.0	B114-15	SM		Dry, very dense, silty fine SAND with gravel, light brown, no solvent or hydrocarbon odor (25-65-10).	
20	50/6"		100	0.0		SM		Dry, very dense, silty fine SAND with gravel, light brown, no solvent or hydrocarbon odor (25-65-10).	
25	50/6"		100	0.8	B114-25	SM		Dry, very dense, silty fine SAND with gravel, gray, no solvent or hydrocarbon odor (35-55-10).	
30									

Drilling Co./Driller: Cascade/Curtis
Drilling Equipment: HSA
Sampler Type: Dames and Moore
Hammer Type/Weight: 300 lbs
Total Boring Depth: 45.5 feet bgs
Total Well Depth: 45 feet bgs
State Well ID No.: BHS768

Well/Auger Diameter: 2/8.25 inches
Well Screened Interval: 35 to 45 feet bgs
Screen Slot Size: 0.010 inches
Filter Pack Used: 2/12 Silica Sand
Surface Seal: Concrete
Annular Seal: Bentonite
Monument Type: Flush mount

Notes/Comments:



Project: 700 Dexter
Project Number: 0797-001
Logged by: RAH
Date Started: 12/10/12
Surface Conditions: Gravel
Well Location N/S: 145.4' S of SE corner OF 700 Dexter bldg.
Well Location E/W: 75' W of SE corner OF 700 Dexter bldg.
Reviewed by: CCC
Date Completed: 12/10/12

BORING LOG | **B114**
 MW114

Site Address: 700 Dexter Avenue North
 Seattle, Washington

Water Depth At Time of Drilling 30 feet bgs
Water Depth After Completion 17.05 feet bgs

Depth (feet bgs)	Interval	Blow Count	% Recovery	PID (ppmv)	Sample ID	USCS Class	Graphic	Lithologic Description	Well Construction Detail
30	50/6"		100	0.2		SP-SM		Wet, very dense, medium to fine SAND with silt and gravel, gray, no solvent or hydrocarbon odor (10-80-10).	
35	50/6"		100	42.8	B114-35	SM		Moist, very dense, silty fine SAND, gray, no solvent or hydrocarbon odor (45-55-0).	
	50/6"		100	40.2		SM		Moist, very dense, silty fine SAND, gray, no solvent or hydrocarbon odor (45-55-0).	
40	50/6"		100	0.8	B114-40	SM-SP		Wet, very dense, medium to fine SAND with silt, light gray, no solvent or hydrocarbon odor (15-85-0).	
	50/2"		100	0.2		SM-ML		Moist, very dense, silty SAND with gravel, cohesive, gray, no solvent or hydrocarbon odor (40-45-15).	
45									

Drilling Co./Driller: Cascade/Curtis
Drilling Equipment: HSA
Sampler Type: Dames and Moore
Hammer Type/Weight: 300 lbs
Total Boring Depth: 45.5 feet bgs
Total Well Depth: 45 feet bgs
State Well ID No.: BHS768

Well/Auger Diameter: 2/8.25 inches
Well Screened Interval: 35 to 45 feet bgs
Screen Slot Size: 0.010 inches
Filter Pack Used: 2/12 Silica Sand
Surface Seal: Concrete
Annular Seal: Bentonite
Monument Type: Flush mount

Notes/Comments:



Project: 700 Dexter
Project Number: 0797-001
Logged by: RAH
Date Started: 12/10/12
Surface Conditions: Gravel
Well Location N/S: 145.4' S of SE corner OF 700 Dexter bldg.
Well Location E/W: 75' W of SE corner OF 700 Dexter bldg.
Reviewed by: CCC
Date Completed: 12/10/12

BORING LOG | **B114**
 MW114

Site Address: 700 Dexter Avenue North
 Seattle, Washington

Water Depth At Time of Drilling 30 feet bgs
Water Depth After Completion 17.05 feet bgs

Depth (feet bgs)	Interval	Blow Count	% Recovery	PID (ppmv)	Sample ID	USCS Class	Graphic	Lithologic Description	Well Construction Detail
45	X 50/3"		100	1.3	B114-45	SM-ML		Damp, very dense, silty SAND with gravel, cohesive, gray, no solvent or hydrocarbon odor (40-45-15). Boring terminated at 45.5 feet below ground surface. Two-inch-diameter well installed to a depth of 45 feet bgs, screened from 35 to 45 feet bgs, and finished with a flush-mounted monument and concrete seal. Completed as monitoring well MW114.	
50									
55									
60									

Drilling Co./Driller: Cascade/Curtis
Drilling Equipment: HSA
Sampler Type: Dames and Moore
Hammer Type/Weight: 300 lbs
Total Boring Depth: 45.5 feet bgs
Total Well Depth: 45 feet bgs
State Well ID No.: BHS768

Well/Auger Diameter: 2/8.25 inches
Well Screened Interval: 35 to 45 feet bgs
Screen Slot Size: 0.010 inches
Filter Pack Used: 2/12 Silica Sand
Surface Seal: Concrete
Annular Seal: Bentonite
Monument Type: Flush mount

Notes/Comments:



Project: 700 Dexter
Project Number: 0797-001
Logged by: RAH
Date Started: 02/04/13
Surface Conditions: Asphalt
Well Location N/S: 96' south of power pole at SE corner of the intersection of Roy and Dexter
Well Location E/W: 12.6' west of power pole at SE corner of the intersection of Roy and Dexter
Reviewed by: CCC
Date Completed: 02/04/13

BORING LOG | **B117**
 MW117

Site Address: 700 Dexter Avenue North
 Seattle, WA

Water Depth At Time of Drilling 40 feet bgs
Water Depth After Completion feet bgs

Depth (feet bgs)	Interval	Blow Count	% Recovery	PID (ppmv)	Sample ID	USCS Class	Graphic	Lithologic Description	Well Construction Detail
0								<p>Asphalt 6" thick.</p> <p>Boring cleared with a vector truck to a depth of 8' below ground surface (bgs).</p>	
10	50/4"	10	0.0	B117-10	SM		<p>Damp, very dense, silty SAND with gravel, light brown, no solvent or hydrocarbon odor (30-55-15).</p>		

Drilling Co./Driller: Cascade Drilling Co./Curtis
Drilling Equipment: HSA LAR
Sampler Type: Split-spoon
Hammer Type/Weight: 140 lbs
Total Boring Depth: 55.5 feet bgs
Total Well Depth: 55 feet bgs
State Well ID No.: BHS 885

Well/Auger Diameter: 2/8.25 inches
Well Screened Interval: 40 to 55 feet bgs
Screen Slot Size: 0.010 inches
Filter Pack Used: #2/12 Sand
Surface Seal: Concrete
Annular Seal: Bentonite Chips
Monument Type: Flush mount

Notes/Comments:



Project: 700 Dexter
Project Number: 0797-001
Logged by: RAH
Date Started: 02/04/13
Surface Conditions: Asphalt
Well Location N/S: 96' south of power pole at SE corner of the intersection of Roy and Dexter
Well Location E/W: 12.6' west of power pole at SE corner of the intersection of Roy and Dexter
Reviewed by: CCC
Date Completed: 02/04/13

BORING LOG | **B117**
 MW117

Site Address: 700 Dexter Avenue North
 Seattle, WA

Water Depth At Time of Drilling 40 feet bgs
Water Depth After Completion feet bgs

Depth (feet bgs)	Interval	Blow Count	% Recovery	PID (ppmv)	Sample ID	USCS Class	Graphic	Lithologic Description	Well Construction Detail
15	50/5"	33	0.0	B117-15	SM		Moist, very dense, silty SAND with gravel, light brown, no solvent or hydrocarbon odor (25-65-10).		
20	50/5"	33	0.0	B117-20	SP-SM		Damp, very dense, medium to fine SAND with silt and gravel, light brown, no solvent or hydrocarbon odor (15-75-10).		
25	50/5"	30	0.0	B117-25	SM		Damp, very dense, silty SAND with gravel, cohesive, light brown, no solvent or hydrocarbon odor (40-50-10).		
30									

Drilling Co./Driller: Cascade Drilling Co./Curtis
Drilling Equipment: HSA LAR
Sampler Type: Split-spoon
Hammer Type/Weight: 140 lbs
Total Boring Depth: 55.5 feet bgs
Total Well Depth: 55 feet bgs
State Well ID No.: BHS 885

Well/Auger Diameter: 2/8.25 inches
Well Screened Interval: 40 to 55 feet bgs
Screen Slot Size: 0.010 inches
Filter Pack Used: #2/12 Sand
Surface Seal: Concrete
Annular Seal: Bentonite Chips
Monument Type: Flush mount

Notes/Comments:



Project: 700 Dexter
Project Number: 0797-001
Logged by: RAH
Date Started: 02/04/13
Surface Conditions: Asphalt
Well Location N/S: 96' south of power pole at SE corner of the intersection of Roy and Dexter
Well Location E/W: 12.6' west of power pole at SE corner of the intersection of Roy and Dexter
Reviewed by: CCC
Date Completed: 02/04/13

BORING LOG | **B117**
 MW117

Site Address: 700 Dexter Avenue North
 Seattle, WA

Water Depth At Time of Drilling 40 feet bgs
Water Depth After Completion feet bgs

Depth (feet bgs)	Interval	Blow Count	% Recovery	PID (ppmv)	Sample ID	USCS Class	Graphic	Lithologic Description	Well Construction Detail
30	50/5"	30	0.0	B117-30	SM		Wet, very dense, silty SAND with gravel, light brown, no solvent or hydrocarbon odor (25-60-15).		
35	50/5"	30	0.0	B117-35	SM		Moist, very dense, silty SAND with gravel, gray, no solvent or hydrocarbon odor (30-60-10).		
40	50/6"	100	0.0	B117-40	SP-SM		Wet, very dense, medium to fine SAND with silt and gravel, gray, no solvent or hydrocarbon odor (10-80-10).		
45									

Drilling Co./Driller: Cascade Drilling Co./Curtis
Drilling Equipment: HSA LAR
Sampler Type: Split-spoon
Hammer Type/Weight: 140 lbs
Total Boring Depth: 55.5 feet bgs
Total Well Depth: 55 feet bgs
State Well ID No.: BHS 885

Well/Auger Diameter: 2/8.25 inches
Well Screened Interval: 40 to 55 feet bgs
Screen Slot Size: 0.010 inches
Filter Pack Used: #2/12 Sand
Surface Seal: Concrete
Annular Seal: Bentonite Chips
Monument Type: Flush mount

Notes/Comments:



Project: 700 Dexter
Project Number: 0797-001
Logged by: RAH
Date Started: 02/04/13
Surface Conditions: Asphalt
Well Location N/S: 96' south of power pole at SE corner of the intersection of Roy and Dexter
Well Location E/W: 12.6' west of power pole at SE corner of the intersection of Roy and Dexter
Reviewed by: CCC
Date Completed: 02/04/13

BORING LOG | **B117**
 MW117

Site Address: 700 Dexter Avenue North
 Seattle, WA

Water Depth At Time of Drilling 40 feet bgs
Water Depth After Completion feet bgs

Depth (feet bgs)	Interval	Blow Count	% Recovery	PID (ppmv)	Sample ID	USCS Class	Graphic	Lithologic Description	Well Construction Detail
45	50/6"	100	0.0	B117-45	SP-SM		Wet, very dense, medium to fine sand with silt and gravel, gray, no solvent or hydrocarbon odor (10-80-10).		
50	50/5"	30	0.0	B117-50	SM-ML		Moist, very dense, silty SAND with gravel, cohesive, gray, no solvent or hydrocarbon odor (45-45-10).		
55	50/5"	20	0.0	B117-55	SM ML		Damp, very dense, silty SAND, gray, no solvent or hydrocarbon odor (20-80-0). Damp, very dense, SILT with fine sand, no solvent or hydrocarbon odor (55-45-0).		
60							Boring terminated at 55.5 feet below ground surface. A two-inch diameter well was installed to a depth of 55 feet bgs, screened from 40 to 55 feet bgs, and finished with a flush-mounted monument and concrete seal. Completed as monitoring well MW117.		

Drilling Co./Driller: Cascade Drilling Co./Curtis
Drilling Equipment: HSA LAR
Sampler Type: Split-spoon
Hammer Type/Weight: 140 lbs
Total Boring Depth: 55.5 feet bgs
Total Well Depth: 55 feet bgs
State Well ID No.: BHS 885

Well/Auger Diameter: 2/8.25 inches
Well Screened Interval: 40 to 55 feet bgs
Screen Slot Size: 0.010 inches
Filter Pack Used: #2/12 Sand
Surface Seal: Concrete
Annular Seal: Bentonite Chips
Monument Type: Flush mount

Notes/Comments:



Project: 700 Dexter
Project Number: 0797-001-02
Logged by: EBF
Date Started: 03/21/13
Surface Conditions: Asphalt
Well Location N/S: On S property line of vacant lot in sidewalk
Well Location E/W: On Mercer St, 76' E of NE corner of intersection with Dexter Ave N
Reviewed by: CCC
Date Completed: 03/21/13

BORING LOG | **B118**
 MW118

Site Address: 700 Dexter Avenue North
 Seattle, Washington

Water Depth At Time of Drilling 20 feet bgs
Water Depth After Completion -- feet bgs

Depth (feet bgs)	Interval	Blow Count	% Recovery	PID (ppmv)	Sample ID	USCS Class	Graphic	Lithologic Description	Well Construction Detail
0								3 inches of asphalt.	
5	10 15 25		100			SM		Moist, dense, silty fine SAND with medium-large gravel, brown, no solvent or hydrocarbon odor (30-55-15).	
10	32 50/6		100	0.1	B118-10	SM		Moist, very dense, silty fine SAND with gravel, increasing silt with depth, brown, no solvent or hydrocarbon odor (35-55-10).	
15									

Drilling Co./Driller: Cascade Drilling/ James
Drilling Equipment: HSA
Sampler Type: D+M
Hammer Type/Weight: 300 lbs
Total Boring Depth: 55.5 feet bgs
Total Well Depth: 50 feet bgs
State Well ID No.: BIC 079

Well/Auger Diameter: 2 inches
Well Screened Interval: 40-50 feet bgs
Screen Slot Size: 0.010 inches
Filter Pack Used: 2/12 Sand
Surface Seal: Cement
Annular Seal: Bentonite
Monument Type: Flush mount

Notes/Comments:



Project: 700 Dexter
Project Number: 0797-001-02
Logged by: EBF
Date Started: 03/21/13
Surface Conditions: Asphalt
Well Location N/S: On S property line of vacant lot in sidewalk
Well Location E/W: On Mercer St, 76' E of NE corner of intersection with Dexter Ave N
Reviewed by: CCC
Date Completed: 03/21/13

BORING LOG | **B118**
 MW118

Site Address: 700 Dexter Avenue North
 Seattle, Washington

Water Depth At Time of Drilling 20 feet bgs
Water Depth After Completion -- feet bgs

Depth (feet bgs)	Interval	Blow Count	% Recovery	PID (ppmv)	Sample ID	USCS Class	Graphic	Lithologic Description	Well Construction Detail
15	26 50/5	150	0.0			SM ML		Moist, very dense, silty fine SAND with some gravel, brown, no solvent or hydrocarbon odor (25-65-10). Moist, hard, fine sandy SILT, gray, no solvent or hydrocarbon odor (80-20-0).	
20	50/6	125	0.0		B118-20	ML SP-SM SM-ML		Moist, hard, fine sandy SILT, gray, no solvent or hydrocarbon odor (80-20-0). Moist to wet, very dense, fine to medium SAND with trace gravel and trace silt, no solvent or hydrocarbon odor (10-85-5). Moist, very dense, fine sandy SILT, gray-brown, no solvent or hydrocarbon odor (60-40-0).	
25	50/6	125	0.1			SM		Moist, very dense, silty fine SAND with gravel, gray, no solvent or hydrocarbon odor (30-60-10).	
30									

Drilling Co./Driller: Cascade Drilling/ James
Drilling Equipment: HSA
Sampler Type: D+M
Hammer Type/Weight: 300 lbs
Total Boring Depth: 55.5 feet bgs
Total Well Depth: 50 feet bgs
State Well ID No.: BIC 079

Well/Auger Diameter: 2 inches
Well Screened Interval: 40-50 feet bgs
Screen Slot Size: 0.010 inches
Filter Pack Used: 2/12 Sand
Surface Seal: Cement
Annular Seal: Bentonite
Monument Type: Flush mount

Notes/Comments:



Project: 700 Dexter
Project Number: 0797-001-02
Logged by: EBF
Date Started: 03/21/13
Surface Conditions: Asphalt
Well Location N/S: On S property line of vacant lot in sidewalk
Well Location E/W: On Mercer St, 76' E of NE corner of intersection with Dexter Ave N
Reviewed by: CCC
Date Completed: 03/21/13

BORING LOG | **B118**
 MW118

Site Address: 700 Dexter Avenue North
 Seattle, Washington

Water Depth At Time of Drilling 20 feet bgs
Water Depth After Completion -- feet bgs

Depth (feet bgs)	Interval	Blow Count	% Recovery	PID (ppmv)	Sample ID	USCS Class	Graphic	Lithologic Description	Well Construction Detail
30	50/6	125	3.0	B118-30	SM		Moist to wet, very dense, silty fine to medium SAND with lenses of cleaner medium sand, gray, no solvent or hydrocarbon odor (25-75-0).		
35	50/6	150	2.4		SM		Wet, very dense, silty fine to medium SAND with trace fine gravel, gray, no solvent or hydrocarbon odor (20-75-5).		
40	50/6	150		B118-40	SM SM-ML		Wet, very dense, silty fine to medium SAND with trace fine gravel, gray, no solvent or hydrocarbon odor (20-75-5). Moist, very dense, silty fine SAND, gray, no solvent or hydrocarbon odor (45-55-0).		
45									

Drilling Co./Driller: Cascade Drilling/ James
Drilling Equipment: HSA
Sampler Type: D+M
Hammer Type/Weight: 300 lbs
Total Boring Depth: 55.5 feet bgs
Total Well Depth: 50 feet bgs
State Well ID No.: BIC 079

Well/Auger Diameter: 2 inches
Well Screened Interval: 40-50 feet bgs
Screen Slot Size: 0.010 inches
Filter Pack Used: 2/12 Sand
Surface Seal: Cement
Annular Seal: Bentonite
Monument Type: Flush mount

Notes/Comments:



Project: 700 Dexter
Project Number: 0797-001-02
Logged by: EBF
Date Started: 03/21/13
Surface Conditions: Asphalt
Well Location N/S: On S property line of vacant lot in sidewalk
Well Location E/W: On Mercer St, 76' E of NE corner of intersection with Dexter Ave N
Reviewed by: CCC
Date Completed: 03/21/13

BORING LOG | **B118**
 MW118

Site Address: 700 Dexter Avenue North
 Seattle, Washington

Water Depth At Time of Drilling 20 feet bgs
Water Depth After Completion -- feet bgs

Depth (feet bgs)	Interval	Blow Count	% Recovery	PID (ppmv)	Sample ID	USCS Class	Graphic	Lithologic Description	Well Construction Detail
45	50/5	125	6.0			SM		Moist to wet, very dense, silty fine SAND, gray, no solvent or hydrocarbon odor (35-65-0). Lenses of silty SAND present within sample (30-70-0).	
50	50/5	125	1.2	B118-50	SM		Moist, very dense, silty fine SAND with trace gravel, gray, no solvent or hydrocarbon odor (35-60-5).		
55	50/5	125			SM		Moist, very dense, silty fine SAND with trace gravel, gray, no solvent or hydrocarbon odor (35-60-5).		
60							Boring terminated at 55.5 feet below ground surface (bgs). Boring was backfilled with bentonite chips to 50 feet bgs. Two-inch diameter well installed to a depth of 50 feet bgs, screened from 40 to 50 feet bgs, and finished with a flush-mounted monument and concrete seal. Completed as monitoring well MW118.		

Drilling Co./Driller: Cascade Drilling/ James
Drilling Equipment: HSA
Sampler Type: D+M
Hammer Type/Weight: 300 lbs
Total Boring Depth: 55.5 feet bgs
Total Well Depth: 50 feet bgs
State Well ID No.: BIC 079

Well/Auger Diameter: 2 inches
Well Screened Interval: 40-50 feet bgs
Screen Slot Size: 0.010 inches
Filter Pack Used: 2/12 Sand
Surface Seal: Cement
Annular Seal: Bentonite
Monument Type: Flush mount

Notes/Comments:



Project: 700 Dexter
Project Number: 0797-001-02
Logged by: EBF
Date Started: 03/21/13
Surface Conditions: Concrete
Well Location N/S: SW corner of intersection of Broad St and 9th Ave N
Well Location E/W:
Reviewed by: CCC
Date Completed: 03/21/13

BORING LOG | **B119**
 MW119

Site Address: 700 Dexter Avenue North
 Seattle, WA

Water Depth At Time of Drilling 10 feet bgs
Water Depth After Completion feet bgs

Depth (feet bgs)	Interval	Blow Count	% Recovery	PID (ppmv)	Sample ID	USCS Class	Graphic	Lithologic Description	Well Construction Detail
0								Concrete cored prior to drilling. Concrete 4 inches thick.	
5	20 18 20		100			SM (FILL)		Moist, dense, silty, gravelly, fine to medium SAND, brown, no solvent or hydrocarbon odor (15-70-15).	
10	4 3 3		100	0.9	B119-10	SM (FILL) ML (FILL)		Moist to wet, loose, gravelly, silty, fine to medium SAND with some coarse sand, gray-brown, no solvent or hydrocarbon odor (15-65-20). Moist, soft, fine sandy SILT with gravel, dark brown, black staining, wood debris, no solvent or hydrocarbon odor (60-30-10).	

Drilling Co./Driller: Cascade Drilling/ James
Drilling Equipment: HSA
Sampler Type: D+M
Hammer Type/Weight: 300 lbs
Total Boring Depth: 46 feet bgs
Total Well Depth: 45 feet bgs
State Well ID No.: BIC 080

Well/Auger Diameter: 2 inches
Well Screened Interval: 35-45 feet bgs
Screen Slot Size: 0.010 inches
Filter Pack Used: 2/12 Sand
Surface Seal: Cement
Annular Seal: Bentonite
Monument Type: Flush-mount

Notes/Comments:



Project: 700 Dexter
Project Number: 0797-001-02
Logged by: EBF
Date Started: 03/21/13
Surface Conditions: Concrete
Well Location N/S: SW corner of intersection of Broad St and 9th Ave N
Well Location E/W:
Reviewed by: CCC
Date Completed: 03/21/13

BORING LOG | **B119**
 MW119

Site Address: 700 Dexter Avenue North
 Seattle, WA

Water Depth At Time of Drilling 10 feet bgs
Water Depth After Completion feet bgs

Depth (feet bgs)	Interval	Blow Count	% Recovery	PID (ppmv)	Sample ID	USCS Class	Graphic	Lithologic Description	Well Construction Detail
15	16 29 33		100	0.9		SM-ML		Wet, very dense, silty fine SAND with trace gravel, blue-gray, no solvent or hydrocarbon odor (45-50-5).	
20	10 7 10		30	0.9	B119-20	SM		Wet, medium dense, silty fine SAND, organics, wood debris, glass shards, gray, no solvent or hydrocarbon odor (40-60-0).	
25	10 10 10		100	0.7		SM ML		Wet, medium dense, silty fine SAND, organics, wood debris, glass shards, dark brown, no solvent or hydrocarbon odor (35-50-15). Moist, stiff, SILT with fine sand, blue-gray, no solvent or hydrocarbon odor (90-10-0).	
30									

Drilling Co./Driller: Cascade Drilling/ James
Drilling Equipment: HSA
Sampler Type: D+M
Hammer Type/Weight: 300 lbs
Total Boring Depth: 46 feet bgs
Total Well Depth: 45 feet bgs
State Well ID No.: BIC 080

Well/Auger Diameter: 2 inches
Well Screened Interval: 35-45 feet bgs
Screen Slot Size: 0.010 inches
Filter Pack Used: 2/12 Sand
Surface Seal: Cement
Annular Seal: Bentonite
Monument Type: Flush-mount

Notes/Comments:



Project: 700 Dexter
Project Number: 0797-001-02
Logged by: EBF
Date Started: 03/21/13
Surface Conditions: Concrete
Well Location N/S: SW corner of intersection of Broad St and 9th Ave N
Well Location E/W:
Reviewed by: CCC
Date Completed: 03/21/13

BORING LOG | **B119**
 MW119

Site Address: 700 Dexter Avenue North
 Seattle, WA

Water Depth At Time of Drilling 10 feet bgs
 Water Depth After Completion feet bgs

Depth (feet bgs)	Interval	Blow Count	% Recovery	PID (ppmv)	Sample ID	USCS Class	Graphic	Lithologic Description	Well Construction Detail
30	30	50/6	150	0.1	B119-30	SP-SM		Moist, very dense, fine SAND with silt, gray, no solvent or hydrocarbon odor (15-85-0).	
35	13 15 15	100	0.9		SP-SM		Moist to wet, medium dense, fine SAND with silt, gray, no solvent or hydrocarbon odor (15-85-0).		
40	13 15 15	100	0.9	B119-40	SP-SM		Wet, medium dense, fine SAND with some silt, brown, no solvent or hydrocarbon odor (10-90-0).		
45									

Drilling Co./Driller: Cascade Drilling/ James
Drilling Equipment: HSA
Sampler Type: D+M
Hammer Type/Weight: 300 lbs
Total Boring Depth: 46 feet bgs
Total Well Depth: 45 feet bgs
State Well ID No.: BIC 080

Well/Auger Diameter: 2 inches
Well Screened Interval: 35-45 feet bgs
Screen Slot Size: 0.010 inches
Filter Pack Used: 2/12 Sand
Surface Seal: Cement
Annular Seal: Bentonite
Monument Type: Flush-mount

Notes/Comments:



Project: 700 Dexter
Project Number: 0797-001-02
Logged by: EBF
Date Started: 03/21/13
Surface Conditions: Concrete
Well Location N/S: SW corner of intersection of Broad St and 9th Ave N
Well Location E/W:
Reviewed by: CCC
Date Completed: 03/21/13

BORING LOG | **B119**
 MW119

Site Address: 700 Dexter Avenue North
 Seattle, WA

Water Depth At Time of Drilling 10 feet bgs
 Water Depth After Completion feet bgs

Depth (feet bgs)	Interval	Blow Count	% Recovery	PID (ppmv)	Sample ID	USCS Class	Graphic	Lithologic Description	Well Construction Detail
45	28 50/6	125	1.0			SP		Wet, very dense, fine to medium SAND with trace silt, gray to brown, no solvent or hydrocarbon odor (5-95-0).	
50								Boring terminated at 46 feet below ground surface (bgs). Two-inch diameter well installed to a depth of 45 feet bgs, screened from 35 to 45 feet bgs, and finished with a flush-mounted monument and concrete seal. Completed as monitoring well MW119.	
55									
60									

Drilling Co./Driller: Cascade Drilling/ James
Drilling Equipment: HSA
Sampler Type: D+M
Hammer Type/Weight: 300 lbs
Total Boring Depth: 46 feet bgs
Total Well Depth: 45 feet bgs
State Well ID No.: BIC 080

Well/Auger Diameter: 2 inches
Well Screened Interval: 35-45 feet bgs
Screen Slot Size: 0.010 inches
Filter Pack Used: 2/12 Sand
Surface Seal: Cement
Annular Seal: Bentonite
Monument Type: Flush-mount

Notes/Comments:



Boring Completion	PID (PPM)	Sample ID	Sample Recovery (in)	Sample Interval	Depth (Feet)	Graphic Log	Lithologic Description
<p>Concrete</p> <p>Sch. 40 PVC Casing</p> <p>Bentonite Grout</p>					0		LIGHT BROWN SILTY SAND (SM), moist, fine to medium sand, little fines, few fine subangular to subrounded gravel up to 0.5-inch diameter
	2.8				2		
	2.3		36		4		
	2.5				6		LIGHT GRAY TO BROWN SANDY SILT (ML), moist, some fine to coarse sand, few fine angular to subangular gravel up to 0.5-inch diameter, trace anthropogenics, black staining (FILL)
	2.3		60		8		at 6 feet: brown, orange staining
	2.6				10		BROWN SILTY SAND (SM), moist, fine to medium, little fines
	2.6				12		at 12 feet: fine to coarse sand, few fine subangular to subrounded gravel up to 0.5-inch diameter
	6.7				14		
	5.5		120		16		LIGHT BROWN SANDY SILT (ML), moist, firm, some fine to coarse sand, few fine subangular to subrounded gravel up to 0.5-inch diameter, orange staining
	8.9				18		
	3.7				20		LIGHT BROWN TO LIGHT GRAY SILTY SAND (SM), moist, medium dense, fine to coarse, little fines, few fine to coarse subangular to subrounded gravel up to 0.5-inch diameter
	3.5				22		
	4.0		120		24		LIGHT BROWN TO LIGHT GRAY SANDY SILT (ML), moist, hard, some fine to coarse sand, few fine subangular to subrounded gravel up to 0.5-inch diameter
	2.8				26		
	5.6				28		LIGHT GRAY SILTY SAND (SM), moist, dense, fine to medium, some fines, few fine subangular to subrounded gravel up to 0.5-inch diameter, homogeneous
	7.0		120		30		at 30 feet: little fines
	0.6				31		at 31 feet: wet
	0.7		60		32		at 32 feet: lense of medium to coarse silty sand 2 inches thick
	1.2				34		LIGHT GRAY SANDY SILT (ML), wet, hard, some fine to medium sand, few fine to coarse subangular to subrounded gravel up to 1-inch diameter, homogeneous
	2.6				36		LIGHT GRAY SILTY SAND (SM), moist, dense, fine to medium, little fines, few fine to coarse subangular to subrounded gravel up to 1.5-inch diameter, homogeneous
2.1				38			
2.0				40			

Project: Fromer American Linen Supply
 Project Number: 1413.001.02.602
 Site Location: Seattle, WA
 Logged By: KWS/SEM
 Ecology Well Tag:

Total Drilled Depth: 115 feet bgs
 Diameter of Boring: 6 inches
 Drill Date: 08/31/17-09/01/17
 Drilled By: Cascade Drilling
 Drill Method: Sonic



Boring Completion	PID (PPM)	Sample ID	Sample Recovery (in)	Sample Interval	Depth (Feet)	Graphic Log	Lithologic Description						
<p>Bentonite Grout</p> <p>Sch. 40 PVC Casing</p>	2.6	MW-137-45	60	42-48	42-48		LIGHT GRAY SILTY SAND (SM), moist, dense, fine to coarse, some fines, few fine subangular to subrounded gravel up to 0.75-inch diameter, homogeneous						
	2.8												
	3.2												
	2.0												
	1.3												
	2.9												
	2.3												
	1.4												
	1.1												
	2.5												
	4.4	MW-137-75	120	50-56	50-56		LIGHT GRAY SILT (ML), moist, firm, few fine sand, sample collected for grain size analysis at 50 feet: soil sample for physical analysis LIGHT GRAY SILTY SAND (SM), moist, dense, fine to coarse, some fines, few fine subangular to subrounded gravel up to 0.75-inch diameter, homogeneous						
	5.3												
	4.4												
	6.3												
	6.7												
	5.3												
	4.1												
	-							- 60 to 70 feet bgs fell out of the sampler and was recovered very loose and wet					
	3.9							MW-137-76 -W B-905-60-W	60	68-74	68-74		LIGHT GRAY SANDY SILT (ML), wet, firm, some fine to coarse sand, few fine subangular to subrounded gravel up to 0.5-inch diameter, homogeneous at 75 feet: water Color-Tec reading <0.003 mg/L, soil Color-Tec reading <0.003 mg/kg at 78 feet: moist, little fine to medium sand, trace gravel. at 80 feet: some sand, few gravel
	4.8												
2.4													
5.5													
4.7													
4.6													
3.6													
3.5													

Project: Former American Linen Supply
 Project Number: 1413.001.02.602
 Site Location: Seattle, WA
 Logged By: KWS/SEM
 Ecology Well Tag:

Total Drilled Depth: 115 feet bgs
 Diameter of Boring: 6 inches
 Drill Date: 08/31/17-09/01/17
 Drilled By: Cascade Drilling
 Drill Method: Sonic



Boring Completion	PID (PPM)	Sample ID	Sample Recovery (in)	Sample Interval	Depth (Feet)	Graphic Log	Lithologic Description
<p>Sch. 40 PVC Casing</p> <p>Bentonite Grout</p> <p>Bentonite Chips</p> <p>10x20 Sand</p> <p>0.020-inch Sch. 40 PVC Screen</p> <p>End Cap</p>	4.1	MW-137-85	60	82-86	82		
	2.5				84		
	3.3				86		
	1.5				88		
	3.0				90		at 90 feet: sample collected for physical analysis
	4.2	MW-137-95	120	94-98	94		at 95 feet: soil Color-Tec reading <0.003 mg/kg
	2.4				96		
	5.6				98		
	5.3				100		
	5.4				102		LIGHT GRAY SILTY SAND (SM) wet, very dense, fine to medium, some fines, few fine subangular to subrounded gravel up to 0.5-inch diameter
	4.8	MW-137-107-W	96	104-108	104		at 103 feet: soil Color-Tec reading <0.003 mg/kg
	2.7				106		LIGHT GRAY TO LIGHT BROWN SAND (SP), wet, loose, fine to medium, few fines, orange mottling
	9.1				108		at 107 feet: water Color-Tec reading <0.003 mg/L
	5.0				110		
	4.9				112		
6.5	MW-137-115	36	114-118	114		at 115 feet: soil Color-Tec reading <0.003 mg/kg, soil collected for physical analysis	
6.6				116			
7.8				118			
28.3				120			
1.9				122			
7.0							
16.9							
13.1							
7.2							
5.4							
							Bottom of Boring at 115.3 feet.
							Well Completion Details: Well constructed with 2-inch Schedule 40 PVC pipe and a 0.020-inch machine slotted screen with 10x20 Colorado Silica Sand.
							Total Well Depth: 115.3 feet.

Project: Former American Linen Supply
 Project Number: 1413.001.02.602
 Site Location: Seattle, WA
 Logged By: KWS/SEM
 Ecology Well Tag:

Total Drilled Depth: 115 feet bgs
 Diameter of Boring: 6 inches
 Drill Date: 08/31/17-09/01/17
 Drilled By: Cascade Drilling
 Drill Method: Sonic



Boring Completion	PID (PPM)	Sample ID	Sample Recovery (in)	Sample Interval	Depth (Feet)	Graphic Log	Lithologic Description
					122		<p>Well Sump/Endcap: 115.0 to 115.3 feet. Well Screen: 105.0 to 115.0 feet. Filter Pack: 103 to 115.3 feet. Well Seal: 2 to 100 feet (bentonite grout), and 100 to 103 (hydrated bentonite chips). Surface Seal: 0 to 2 feet (concrete). Well Monument: Flush with grade steel monument.</p>
					124		
					126		
					128		
					130		
					132		
					134		
					136		
					138		
					140		
					142		
					144		
					146		
					148		
					150		
					152		
					154		
					156		
					158		
					160		

Project: Fromer American Linen Supply
 Project Number: 1413.001.02.602
 Site Location: Seattle, WA
 Logged By: KWS/SEM
 Ecology Well Tag:

Total Drilled Depth: 115 feet bgs
 Diameter of Boring: 6 inches
 Drill Date: 08/31/17-09/01/17
 Drilled By: Cascade Drilling
 Drill Method: Sonic



Boring Completion	PID (PPM)	Sample ID	Sample Recovery (in)	Sample Interval	Depth (Feet)	Graphic Log	Lithologic Description
					0		Concrete (14 inches)
	2.7				2		BROWN SAND WITH SILT AND GRAVEL (SP), moist, loose, fine to coarse, some subrounded to subangular gravel up to 1.25-inch diameter, few fines, trace cobbles, soil cleared with air knife to 7 feet bgs (FILL)
	6.8				4		
	4.7		120		6		
	1.1				8		
	0.7				10		
	0.9				12		
	1.1				14		
	2.2		60		16		
	8.5				18		
					20		
	16.4				22		BROWN SAND WITH SILT AND GRAVEL (SP), moist, dense, fine to coarse, little subrounded gravel up to 0.5-inch diameter, few fines (FILL)
	15.3				24		
	14.6				26		
	15.7		120		28		
	17.5				30		
	11.9				32		
	15.4				34		
	11.5				36		
	13.8				38		
	17.3		60		40		
	17.5						GRAY SILTY SAND (SM), moist, fine to coarse, little fine subangular to subrounded gravel up to 0.75-inch diameter, little fines
	3.5				36		
	11				39		
	11.7				40		
	10.4						
	12.1						

Project: Fromer American Linen Supply
 Project Number: 1413.001.02.602
 Site Location: Seattle, WA
 Logged By: KWS/SEM
 Ecology Well Tag: BKA 296

Total Drilled Depth: 115.3 feet bgs
 Diameter of Boring: 8" 0-40 ft & 6" 40-115.3 ft
 Drill Date: 09/12/17-09/15/17
 Drilled By: Cascade Drilling
 Drill Method: Sonic



Boring Completion	PID (PPM)	Sample ID	Sample Recovery (in)	Sample Interval	Depth (Feet)	Graphic Log	Lithologic Description
	14.6	MW-138-45	120	-	42		GRAY SANDY SILTY (ML), moist, some fine to medium sand, few fine subangular to subrounded gravel up to 0.5-inch diameter at 51 feet: fine to coarse sand, little gravel
	14.7						
	18.1						
	19.4						
	19.7						
	20.5						
	20.7						
	15.3						
	19.3						
	6.4						
	0.2	MW-138-56	120	-	54		GRAY SILT (ML), moist, hard, few fine subangular to subrounded gravel up to 0.5-inch diameter, few fine sand
	8.4						
	0						
	0.2						
	1.1						
	10.4						
	9.7						
	7.7						
	9						
	46.6						
	41.7	MW-138-65 B-910-90	120	-	60		GRAY SILTY SAND (SM), moist, dense, some fines, few fine subangular to subrounded gravel up to 0.5-inch diameter at 65 feet: sample collected for physical analysis, soil Color-Tec reading <0.003 mg/kg
	9.7						
	7.7						
	9						
	46.6						
	41.7						
	20.8						
	14.4						
	3.6						
	0						
	0.1	MW-138-75	120	-	68		GRAY SILT (ML), moist, very hard, some fine sand GRAY SANDY SILT (ML), moist, firm, some fine to coarse sand, few fine to coarse subangular to subrounded gravel up to 1-inch diameter
	0.2						
	10.7						
	13.1						
	10.7						
	12.4						
	12.7						
	12.2						
	13.6						
	13.6						

Project: Fromer American Linen Supply
 Project Number: 1413.001.02.602
 Site Location: Seattle, WA
 Logged By: KWS/SEM
 Ecology Well Tag: BKA 296

Total Drilled Depth: 115.3 feet bgs
 Diameter of Boring: 8" 0-40 ft & 6" 40-115.3 ft
 Drill Date: 09/12/17-09/15/17
 Drilled By: Cascade Drilling
 Drill Method: Sonic



Boring Completion	PID (PPM)	Sample ID	Sample Recovery (in)	Sample Interval	Depth (Feet)	Graphic Log	Lithologic Description		
	11.3	MW-138-85	120	-	82	-	GRAY SANDY SILT (ML), moist, firm, some fine to coarse sand, few fine subangular to subrounded gravel up to 0.5-inch diameter		
	1.1						10.7	84	GRAY SILT WITH SAND (ML), moist, very hard, little fine to medium sand
	11.9						12.3	86	GRAY SILTY SAND (SM), medium dense, fine to medium, some fines, few fine to coarse subangular to subrounded gravel up to 1-inch diameter, trace cobbles
	13.3						10.3	88	GRAY SANDY SILT (ML), moist, some fine to medium sand
	1.7						11.9	90	at 90 feet: fine to coarse sand, few fine subangular to subrounded gravel
	19	17.1	MW-138-95	60	92	-	at 92 feet: trace cobbles		
	15.4	17.1					94	GRAY SILTY SAND (SM), moist, some fines, few fine to coarse subangular to subrounded gravel up to 1-inch diameter	
		15.4					96		
							98		
							100	GRAY SAND WITH SILT (SP), wet, fine to medium, few fines, homogeneous	
			60	102	at 105 feet: soil Color-Tec reading <0.003 mg/kg, attempted to collect water sample but couldn't drive sampler				
			60	104					
		2.8	MW-138-105	60	-	106	-	GRAY SAND WITH SILT (SP), wet, fine to coarse, few fine to coarse subangular to subrounded gravel up to 1-inch diameter, few fines	
	0.7	0.8						108	at 110 feet: brown, loose, medium sand
	0.8	0.9						110	
	0.8	MW-138-115 MW-138-115-W	60	-	112	-	at 115 feet: collected sample for grain size analysis, soil Color-Tec reading <0.003 mg/kg, drove water sampler and collected sample with bailer, water Color-Tec reading <0.003 mg/L		
1.8	1.5						114		
1.5	1.5						116	Bottom of Boring at 115.3 feet.	
			0		118		Well Completion Details: Well constructed with 2-inch Schedule 40 PVC pipe and a 0.020-inch machine slotted screen with 10x20 Colorado Silica Sand.		
					120		Total Well Depth: 115.3 feet.		

Project: Fromer American Linen Supply
 Project Number: 1413.001.02.602
 Site Location: Seattle, WA
 Logged By: KWS/SEM
 Ecology Well Tag: BKA 296

Total Drilled Depth: 115.3 feet bgs
 Diameter of Boring: 8" 0-40 ft & 6" 40-115.3 ft
 Drill Date: 09/12/17-09/15/17
 Drilled By: Cascade Drilling
 Drill Method: Sonic



Boring Completion	PID (PPM)	Sample ID	Sample Recovery (in)	Sample Interval	Depth (Feet)	Graphic Log	Lithologic Description
					122		Well Sump/Endcap: 115.0 to 115.3 feet. Well Screen: 105.0 to 115.0 feet. Filter Pack: 103 to 115.3 feet. Well Seal: 2 to 100 feet (bentonite grout), and 100 to 103 (hydrated bentonite chips). Surface Seal: 0 to 2 feet (concrete). Well Monument: Flush with grade steel monument.
					124		
					126		
					128		
					130		
					132		
					134		
					136		
					138		
					140		
					142		
					144		
					146		
					148		
					150		
					152		
					154		
					156		
					158		
					160		

Project: Fromer American Linen Supply
 Project Number: 1413.001.02.602
 Site Location: Seattle, WA
 Logged By: KWS/SEM
 Ecology Well Tag: BKA 296

Total Drilled Depth: 115.3 feet bgs
 Diameter of Boring: 8" 0-40 ft & 6" 40-115.3 ft
 Drill Date: 09/12/17-09/15/17
 Drilled By: Cascade Drilling
 Drill Method: Sonic



Boring Completion	PID (PPM)	Sample ID	Sample Recovery (in)	Sample Interval	Depth (Feet)	Graphic Log	Lithologic Description
Concrete					0		Concrete (6 inches)
					2		- soil cleared with air knife to 7 feet bgs
	2.2		36		8		YELLOW-BROWN SAND WITH SILT (SP), moist, fine to medium, few fines, abundant clumps of silty sand up to 3-inch diameter, frequent orange staining (FILL?)
	2.5				10		BROWN SILTY SAND WITH GRAVEL (SM), moist, fine to medium, some fines, little fine to coarse subangular to subrounded gravel up to 1-inch diameter, frequent orange staining
	1.6				12		BROWN SILTY SAND WITH GRAVEL (SM), moist, medium, little fine to coarse subangular to subrounded gravel up to 2-inch diameter, little fines, frequent orange staining, higher moisture content than above
	2.3	MW-140-15	120		14		
	2.5				16		ORANGISH-BROWN SILTY SAND (SM), wet, fine to medium, little fines, few fine to coarse subrounded to rounded gravel up to 1.5-inch diameter, grain size varies from fine to medium sand, rare inclusions of finer grained gray to brown soil up to 0.5-inch diameter
	2.9				18		
	4.1				20		GRAY-BROWN SILTY SAND (SM), moist, fine, some fines, few fine to coarse subrounded to rounded gravel up to 0.75-inch diameter
Sch. 40 PVC Casing	1.7				22		at 23 feet: yellow-brown, abundant orange staining
	3.7				24		
	4.5	MW-140-25	120		26		GRAY SILTY SAND (SM), moist, fine to medium, some, few fine to coarse subrounded to rounded gravel up to 1.75-inch diameter
	0.1				28		
	0				30		
	0				32		
Bentonite Grout	5.4				34		GRAY SILTY SAND (SM), moist, fine to medium, some fines, few fine to coarse subrounded to rounded gravel up to 1.5-inch diameter, irregular inclusions of medium sand up to 2-inch diameter
	16.8				36		at 32 feet: wet
	23.8				38		
	33				40		
	24.2	MW-140-35	120		42		GRAY SILTY SAND (SM), moist, fine, some fines, few fine to coarse subrounded to rounded gravel up to 3-inch diameter, rare cobbles
	7.1				44		at 35 feet: soil Color-Tec sample 0.011 mg/kg
	1.8				46		
	9.4				48		
	14.5				50		

Project: Former American Linen Supply
 Project Number: 1413.001.02.602
 Site Location: Seattle, WA
 Logged By: CJD
 Ecology Well Tag: BKA 301

Total Drilled Depth: 140 feet bgs
 Diameter of Boring: 6 inches
 Drill Date: 08/30/17-08/31/17
 Drilled By: Cascade Drilling
 Drill Method: Sonic



Boring Completion	PID (PPM)	Sample ID	Sample Recovery (in)	Sample Interval	Depth (Feet)	Graphic Log	Lithologic Description
<p>Bentonite Grout</p> <p>Sch. 40 PVC Casing</p>	24.6	MW-140-45	60	42-46	42		at 46 feet: little fines
	23.3				44		at 48 feet: some fines, trace gravel
	80.6				46		
	42.1				48		
	9.7	MW-140-55	120	48-50	48		at 50 feet: few gravel
	19.1				50		
	17	MW-140-65	60	52-56	52		GRAY SILTY SAND (SM), moist to wet, fine to medium, little fines, few fine to coarse subrounded to rounded gravel up to 1.5-inch diameter
	19.6				54		
	20.6				56		at 56 feet: driller notes very hard drilling
	19.6				58		
	30.4	MW-140-75	120	60-64	60		GRAY SANDY SILT (ML), moist, some fine to medium sand, few fine to coarse subrounded gravel up to 1-inch diameter
	7.5				62		
	2.6				64		GRAY SILTY SAND (SM), moist, fine to medium, some fines, few fine to coarse gravel up to 1.25-inch diameter
	1.1				66		
	0	MW-140-85	60	68-72	68		GRAY SANDY SILT (ML), moist, some fine to medium sand, few fine to coarse subrounded to rounded gravel up to 2-inch diameter
	0				70		
	0				72		
	4.6				74		
	4.5	MW-140-95	120	76-80	76		at 77 feet: little fine sand, no gravel
	6.2				78		
5.4	80						
3.5	82				GRAY SILTY SAND (SM), moist to wet, fine to medium, little fines, few subrounded to		
4.2							
5.7							
2.9							
6.3							

Project: Former American Linen Supply
 Project Number: 1413.001.02.602
 Site Location: Seattle, WA
 Logged By: CJD
 Ecology Well Tag: BKA 301

Total Drilled Depth: 140 feet bgs
 Diameter of Boring: 6 inches
 Drill Date: 08/30/17-08/31/17
 Drilled By: Cascade Drilling
 Drill Method: Sonic



Boring Completion	PID (PPM)	Sample ID	Sample Recovery (in)	Sample Interval	Depth (Feet)	Graphic Log	Lithologic Description
<p>Sch. 40 PVC Casing</p> <p>Bentonite Grout</p>	2.9	MW-140-90	120		82		rounded gravel up to 2-inch diameter at 80 feet: drive SPT ring sampler for physical analysis
	1.4				84		GRAY SAND WITH SILT (SP), moist to wet, fine to medium, few fine to coarse subrounded to rounded gravel up to 2.5-inch diameter, few fines
	2.1				86		
	3.6				88		DARK GRAY SILTY SAND (SM), moist to wet, fine sand, little fines
	1.1				90		
	1.3				92		at 92 feet: few gravel
	2.1				94		
	1.7				96		BROWN SAND (SP), wet, medium, few fines, trace fine subrounded gravel, grain size varies from fine to medium sand and medium sand over 1-foot intervals at 95 feet: attempted to collect water sample but couldn't advance sampler
	1.1				98		
	2.2				100		at 100 feet: yellow-brown, fine to medium sand, abundant orange staining, collected sample for physical analysis
	1.5	102					
	1.2	104	at 103 feet: orange-brown, dark orange staining				
	2.1	106	at 105 feet: yellow-brown, rare bright orange staining at 106 feet: gray				
	7.4	108					
	7.1	110					
	7.3	112	GRAY SILTY SAND (SM), wet fine, little fines, occasional inclusions of green-black silty sand				
	6.4	114					
	1.3	116					
	2.7	118					
	3.1	120	GRAY SAND WITH SILT (SP), wet, medium to coarse, few fine to coarse subangular to				
3.1							
3.2							

Project: Fromer American Linen Supply
 Project Number: 1413.001.02.602
 Site Location: Seattle, WA
 Logged By: CJD
 Ecology Well Tag: BKA 301

Total Drilled Depth: 140 feet bgs
 Diameter of Boring: 6 inches
 Drill Date: 08/30/17-08/31/17
 Drilled By: Cascade Drilling
 Drill Method: Sonic



Boring Completion	PID (PPM)	Sample ID	Sample Recovery (in)	Sample Interval	Depth (Feet)	Graphic Log	Lithologic Description
Bentonite Grout	2.1						subrounded gravel up to 2-inch diameter, few fines at 120 feet: soil Color-Tec reading <0.003 mg/kg
Sch. 40 PVC Casing	2.4				122		
	3				124		
Bentonite Chips	3.5				126		
	3.2				128		GRAY SAND WITH SILT AND GRAVEL (SP), wet, medium to coarse, some fine to coarse subangular to subrounded gravel up to 3-inch diameter, few fines
	3.5				128		
	2.3	MW-140-130	120		130		at 130 feet: soil Color-Tec reading <0.003 mg/kg
	3.1				132		
10x20 Sand	2.1				134		
0.020-inch Sch. 40 PVC Screen	1.6				136		GRAY SILTY SAND (SM), wet, fine to medium, some fines, few fine subrounded gravel
	1.7		60		136		
	3.1				138		
End Cap	1.2	MW-140-140			140		GRAY SILTY GRAVEL WITH SAND (GM), wet, fine to coarse subangular to subrounded gravel, some fine to coarse sand, little fines at 140 feet: soil Color-Tec reading <0.003 mg/kg
					140		Bottom of Boring at 140 feet.
					142		Well Completion Details: Well constructed with 2-inch Schedule 40 PVC pipe and a 0.020-inch machine slotted screen with 10x20 Colorado Silica Sand.
					144		Total Well Depth: 139.9 feet. Well Sump/Endcap: 139.5 to 139.9 feet. Well Screen: 129.5 to 139.5 feet. Filter Pack: 128 to 140 feet. Well Seal: 3 to 123 feet (bentonite grout), and 123 to 128 (hydrated bentonite chips). Surface Seal: 0 to 3 feet (concrete). Well Monument: Flush with grade steel monument.
					146		
					148		
					150		
					152		
					154		
					156		
					158		
					160		

Project: Fromer American Linen Supply
 Project Number: 1413.001.02.602
 Site Location: Seattle, WA
 Logged By: CJD
 Ecology Well Tag: BKA 301

Total Drilled Depth: 140 feet bgs
 Diameter of Boring: 6 inches
 Drill Date: 08/30/17-08/31/17
 Drilled By: Cascade Drilling
 Drill Method: Sonic



Well Completion	PID (PPM)	Sample ID	Blow Count	Sample Recovery (in)	Sample Interval	Depth (Feet)	Graphic Log	Lithologic Description
						0	<p>Lithology consistent with adjacent MW-147. See MW-147 log for lithology.</p> <p>Air knife/Vac to 5 feet bgs</p>	
						50.3		<p>Bottom of Boring at 50.3 feet</p> <p>Well Completion Details: Well constructed with 2-inch Schedule 40 PVC pipe and a 0.020-inch machine slotted screen with #2/12 Sand</p> <p>Total Well Depth: 503 feet Well Sump/Endcap: 49.9 to 50.3 feet Well Screen: 39.9 to 49.9 feet Well Riser: 0.6 to 39.9 feet Filter Pack: 38 to 50 feet Well Seal: 4 to 27 feet (hydrated bentonite chips) & 27 to 38 feet (hydrated bentonite pellets) Surface Seal: 0 to 4 feet (concrete) Well Monument: Flush with grade 8-inch steel monument</p>

Project: Former American Linen Supply
Project Number: 1413.001.05.304
Site Location: Seattle, WA
Logged By: RTM
Ecology I.D. BKF-349

Total Drilled Depth: 503 feet
Diameter of Boring: 9 inches
Drill Date: 3/30/18
Drilled By: Cascade Drilling
Drill Method: Hollow Stem Auger

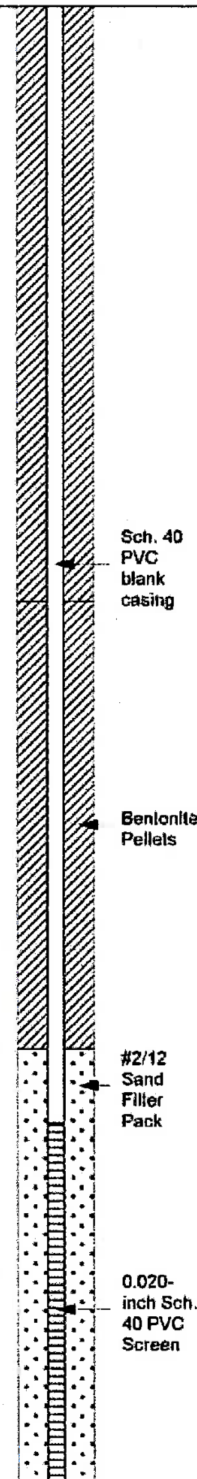


Well Completion	PID (PPM)	Sample ID	Blow Count	Sample Recovery	Sample Interval	Depth (Feet)	Graphic Log	Lithologic Description
Concrete						0		Concrete (6 inches)
	0.0		8		17	4		BROWN SILTY SAND WITH GRAVEL (SM), moist, loose to medium dense, fine to coarse, some fines, few to little fine to coarse gravel
	0.0		8			6		Airknife/Vac to 5 feet bgs
	0.0		8			8		
	0.1	MW-147-10	23	50/6	12	10		
	0.1		50/6			12		LIGHT BROWN SILTY SAND (SM), moist, very dense, fine to medium, some fines, occasional sandier lenses
	0.0		50/6		6	14		
	0.0		50/6			16		
	0.0	MW-147-20	50/6	6	6	18		GRAY BROWN LEAN CLAY (CL), moist, very hard, little fine sand
	0.0		50/6			20		LIGHT BROWN SILTY SAND (SM), moist, very dense, fine to medium, some fines
Sch. 40 PVC blank casing	0.0		50/6		6	24		GRAY SANDY SILT (ML), moist, very hard, some fine to medium sand, trace subrounded gravel up to 0.5-inch diameter
Bentonite Chips	0.0	MW-147-30	50/6	6	6	30		
	0.0		50/6			32		
	0.0		26	50/6	12	34		
	0.0		50/6			36		
	0.0	MW-147-40	50/6	6	6	38		GRAY SILTY SAND (SM), moist, very dense, fine to medium sand, little fines
	0.0		50/6			40		

Project: Former American Linen Supply
 Project Number: 1413.001.05.304
 Site Location: Seattle, WA
 Logged By: RTM
 Notes: 300 lbs. Hammer w/ D&M

Total Drilled Depth: 81.5
 Diameter of Boring: 9 Inches
 Drill Date: 4/2/16
 Drilled By: Cascade Drilling
 Drill Method: Hollow Stem Auger



Well Completion	PID (PPM)	Sample ID	Blow Count	Sample Recovery	Sample Interval	Depth (Feet)	Graphic Log	Lithologic Description
 <p>Sch. 40 PVC blank casing</p> <p>Bentonite Pellets</p> <p>#2/12 Sand Filler Pack</p> <p>0.020-inch Sch. 40 PVC Screen</p>	0.0		50/6	6	44	42		
	0.0	MW-147-50	50/6	6	48	46		GRAY SANDY SILT (ML), moist, very hard, some fine to coarse sand
	0.0					50		
	0.0					52		
	0.0	MW-147-60 MW-901-10	50/6	6	54	50		GRAY SILTY SAND (ML), moist, very dense, fine to coarse, some fines, little fine gravel
	0.0					56		
	0.0					58		
	0.0					60		
	0.0					62		
	0.0					64		
	0.0					66		
	0.0	MW-147-70	50/6	6	70	62		GRAY SANDY SILT (ML), moist, very hard, some fine to medium sand
	0.0					72		
	0.0					74		
	0.0					76		
0.0					78			
0.0	MW-147-80	50/6	6	80	72		GRAY SILTY SAND (SM), moist, very dense, fine to medium, some fines, trace fine to coarse subrounded gravel up to 2-inch diameter	
								GREY SANDY SILT (ML), moist, very hard, some fine to medium sand, trace fine to coarse subrounded gravel up to 1.5-inch diameter, low plasticity

Project: Former American Linen Supply
 Project Number: 1413.001.05.304
 Site Location: Seattle, WA
 Logged By: RTM
 Notes: 300 lbs. Hammer w/ D&M

Total Drilled Depth: 81.5
 Diameter of Boring: 9 inches
 Drill Date: 4/2/18
 Drilled By: Cascade Drilling
 Drill Method: Hollow Stem Auger



Well Completion	PID (PPM)	Sample ID	Blow Count	Sample Recovery	Sample Interval	Depth (Feet)	Graphic Log	Lithologic Description
End Cap	0.0		50/6	6		82		GRAY-GREEN SILTY SAND WITH GRAVEL (SM), moist, very dense, fine to coarse sand, little fine to coarse gravel Extra sample driven from 81 to 81.5 feet bgs due to miscommunication with driller Submitted for grain size analysis
						84		Bottom of borehole @ 81.5 feet bgs Boring backfilled with #2/12 sand from 81 to 81.5 feet bgs
						86		
						88		
						90		
						92		
						94		
						96		
						98		
						100		
						102		
						104		
						106		
						108		
						110		
						112		
						114		
						116		
						118		
						120		

Project: Former American Linen Supply
 Project Number: 1413.001.05.304
 Site Location: Seattle, WA
 Logged By: RTM
 Notes: 300 lbs. Hammer w/ D&M

Total Drilled Depth: 81.5
 Diameter of Boring: 9 Inches
 Drill Date: 4/2/18
 Drilled By: Cascade Drilling
 Drill Method: Hollow Stem Auger



Well Completion	PID (PPM)	Sample ID	Blow Count	Sample Recovery	Sample Interval	Depth (Feet)	Graphic Log	Lithologic Description
Concrete						0		Concrete (6 inches)
						2		BROWN SILTY SAND WITH GRAVEL (SM), moist to wet, loose, fine to coarse, little fines, little subrounded to subangular gravel, trace roots and debris, (FILL)
						4		Airknife/Vac to 5 feet bgs
	0.0		4		18	5		
	0.0		5			6		
						8		BROWN SILTY SAND WITH GRAVEL (SM), moist to wet, medium dense, fine to coarse, little fines, few to little subrounded gravel up to 2-inch diameter
	0.0	MW-148-11	7		12	10		
			10			10		
			10			12		
						14		BROWN SAND WITH GRAVEL (SP), moist to wet, medium dense, fine to medium, few to little subrounded gravel up to 1-inch diameter
	0.0		12		18	16		
			13			16		
			12			18		
Bentonite Chips	3.3	MW-148-20	50/6	6		20		BROWN SILTY SAND (SM), moist, very dense, fine to medium, little fines, trace subrounded gravel up to 0.5-inch diameter
						22		
Sch. 40 PVC blank casing	1.4		50/6	6		24		@ 25 feet bgs orange mottling present
						26		
						28		GRAY SILTY SAND (SM), wet, very dense, fine to medium, little fines, trace subrounded gravel up to 0.5-inch diameter
	53.4	MW-148-30	21		12	30		@ 30 feet bgs ColorTec reading <0.007 mg/kg
			50/6			32		
						34		
	34.3		50/6	6		36		
						38		
		MW-148-40				40		

Project: Former American Linen Supply
 Project Number: 1413.001.05.304
 Site Location: Seattle, WA
 Logged By: KWS
 Notes: 300 lbs. Hammer w/ D&M

Total Drilled Depth: 80.5
 Diameter of Boring: 9 Inches
 Drill Date: 4/9/18
 Drilled By: Cascade Drilling
 Drill Method: Hollow Stem Auger



Well Completion	PID (PPM)	Sample ID	Blow Count	Sample Recovery	Sample Interval	Depth (Feet)	Graphic Log	Lithologic Description
	34.1		50/6	6	42-44	42		GRAY SILTY SAND (SM), moist to wet, very dense, fine to medium, few to little fines, trace subrounded gravel up to 0.5-inch diameter
	15.6		50/6	6	44-46	46		
	7.2	MW-148-50		6	46-50	50		
						52		
	1.0		50/6	6	50-54	54		GRAY SANDY SILT (ML), moist, very hard, little fine to medium sand, low plasticity
	2.3	MW-148-60	50/6	6	54-58	58		DARK GRAY SAND (SP), wet, very dense, fine to medium, trace silt
						60		@ 60 feet bgs sample collected for grainsize analysis
	1.1		31 50/6	12	58-66	66		
	1.0	MW-148-70	50/6	6	66-70	70		GRAY SAND WITH SILT (SP-SM), wet, very dense, fine to coarse, few fines, trace subrounded gravel up to 1-inch diameter
	0.0		60/6	6	70-74	74		Driller noted passing through approximately 1 foot of gravel (GP) GRAY SILTY SAND WITH GRAVEL (SM), wet, very dense, fine to coarse, few to little fines, little subrounded to subangular gravel up to 2-inch diameter
					76			
					78			
					80			

Project: Former American Linen Supply
 Project Number: 1413.001.05.304
 Site Location: Seattle, WA
 Logged By: KWS
 Notes: 300 lbs. Hammer w/ D&M

Total Drilled Depth: 80.5
 Diameter of Boring: 9 Inches
 Drill Date: 4/9/16
 Drilled By: Cascade Drilling
 Drill Method: Hollow Stem Auger



Well Completion	PID (PPM)	Sample ID	Blow Count	Sample Recovery	Sample Interval	Depth (Feet)	Graphic Log	Lithologic Description
End Cap	3.2	MW-148-80	80/6	6	X	80.5		Bottom of borehole @ 80.5 feet bgs
						82		
						84		
						86		
						88		
						90		
						92		
						94		
						96		
						98		
						100		
						102		
						104		
						106		
						108		
						110		
						112		
						114		
						116		
						118		
						120		

Project: Former American Linen Supply
 Project Number: 1413.001.05.304
 Site Location: Seattle, WA
 Logged By: KWS
 Notes: 300 lbs. Hammer w/ D&M

Total Drilled Depth: 80.5
 Diameter of Boring: 9 Inches
 Drill Date: 4/9/18
 Drilled By: Cascade Drilling
 Drill Method: Hollow Stem Auger



Well Completion	PID (PPM)	Sample ID	Blow Count	Sample Recovery	Sample Interval	Depth (Feet)	Graphic Log	Lithologic Description
Concrete						0		Concrete (6 inches)
	0.0		50/6	6	4	2		GRAY BROWN SILTY SAND (SM), moist, medium to very dense, fine to coarse, little to some fines, trace subrounded to subangular gravel up to 1-inch diameter
						6		Air knife/Vac to 5 feet bgs
Bentonite Chips	0.0 0.1 0.0	MW-153-10	12 18 18	17	10	8		
	0.1		50/6	6	14	12		
	0.1 0.1	MW-153-20	33 50/8	12	20	18		GRAY SANDY SILT (ML), moist, very hard, some fine to medium sand
Sch. 40 PVC blank casing	0.1		50/6	6	24	22		BROWN GRAY SILTY SAND (SM), moist, very dense, fine to medium, some fines, mottling present
Bentonite Grout	0.1	MW-153-30	50/6	6	30	26		
	0.0		50/6	6	34	28		
	0.1 0.1	MW-153-40	34 50/5	12	40	36		GRAY GRAVEL WITH SAND (GP), wet, very dense, fine to coarse, few fines, some medium to coarse sand

Project: Former American Linen Supply
 Project Number: 1413.001.05.304
 Site Location: Seattle, WA
 Logged By: RTM
 Notes: 300 lbs. Hammer w/ D&M

Total Drilled Depth: 130.5
 Diameter of Boring: 9 Inches
 Drill Date: 3/27/18
 Drilled By: Cascade Drilling
 Drill Method: Hollow Stem Auger



Well Completion	FID (PPM)	Sample ID	Blow Count	Sample Recovery	Sample Interval	Depth (Feet)	Graphic Log	Lithologic Description
						42		GRAY SILTY SAND (SM), moist, very dense, fine to coarse, some fines, trace rounded gravel
	0.1		31	12	44	46		
	0.1	MW-153-50	50/6	5	48	50		GRAY SILTY SAND (SM), moist, very dense, fine to coarse, little to some fines
						52		
	0.1		50/6	4	54	56		GRAY SILTY SAND (SM), moist, very dense, predominantly fine sand with some medium to coarse, some fines, close to being sandy silt
						58		
	0.1	MW-153-61	80/5	5	60	62		GRAY SILTY SAND (SM), moist, very dense, fine to coarse, some fines, few fine to coarse-subangular to subrounded gravel
	0.0		50/6	6	64	66		GRAY SANDY SILT (ML), moist, very hard, some fine to medium sand, trace coarse rounded gravel
						68		
	0.1	MW-153-70	80/6	6	70	72		GRAY SILTY SAND (SM), moist, very dense, fine to medium, some fines, trace subrounded to subangular gravel up to 0.5-inch diameter
					74			
0.0		80/6	6	76	78			
					80		GRAY SANDY SILT (ML), moist, very hard, some fine to medium sand, very consolidated	

Project: Former American Linen Supply
 Project Number: 1413.001.05.304
 Site Location: Seattle, WA
 Logged By: RTM
 Notes: 300 lbs. Hammer w/ D&M

Total Drilled Depth: 130.5
 Diameter of Boring: 9 Inches
 Drill Date: 3/27/18
 Drilled By: Cascade Drilling
 Drill Method: Hollow Stem Auger



Well Completion	PID (PPM)	Sample ID	Blow Count	Sample Recovery	Sample Interval	Depth (Feet)	Graphic Log	Lithologic Description
						82		GRAY SILTY SAND (SM), moist, very dense, fine to medium, little fines
	0.1		60/6	6	84			
						86		
	0.0	MW-153-80	50/6	6	88			GRAY SILTY SAND (SM), moist, very dense, fine to medium, little fines
						90		@ 87 feet bgs driller noted material started to feel softer
	0.1		50/6	5	94			
						96		Portion of fine sand increases
	0.0	MW-153-100	13	14	100			
	0.0		10	14	104			GRAY SILTY SAND (SM), moist, dense, fine to medium, few to little fines
	0.0		9	14	106			@ 102 feet bgs driller noted material began to feel harder
	0.0	MW-153-110	30	12	110			
	0.0		50/6	12	114			GRAY SAND WITH SILT (SP), moist, dense to very dense, fine to medium, trace to few fines
0.1		37	12	116				
0.1		50/6	12	120				

Project: Former American Linen Supply
 Project Number: 1413.001.05.304
 Site Location: Seattle, WA
 Logged By: RTM
 Notes: 300 lbs. Hammer w/ D&M

Total Drilled Depth: 130.5
 Diameter of Boring: 9 Inches
 Drill Date: 3/27/18
 Drilled By: Cascade Drilling
 Drill Method: Hollow Stem Auger



Well Completion	PID (PPM)	Sample ID	Blow Count	Sample Recovery	Sample Interval	Depth (Feet)	Graphic Log	Lithologic Description
	0.0	MW-153-130	50/6	6	122 - 124	122		GRAY SILTY SAND (SM), moist, very dense, fine to medium, little fines
					124 - 128	128		GRAY GREEN SAND WITH SILT AND GRAVEL (SP), wet, very dense, fine to coarse, few fines, little fine to coarse subangular to subrounded gravel
	0.1					130		Bottom of borehole @ 130.5 feet bgs
						132		
						134		
						136		
						138		
						140		
						142		
						144		
						146		
						148		
						150		
						152		
						154		
						156		
						158		
						160		

Project: Former American Linen Supply
 Project Number: 1413.001.05.304
 Site Location: Seattle, WA
 Logged By: RTM
 Notes: 300 lbs. Hammer w/ D&M

Total Drilled Depth: 130.5
 Diameter of Boring: 9 Inches
 Drill Date: 3/27/18
 Drilled By: Cascade Drilling
 Drill Method: Hollow Stem Auger



Well Completion	PID (PPM)	Sample ID	Blow Count	Sample Recovery (in)	Sample Interval	Depth (Feet)	Graphic Log	Lithologic Description
						0	<p>Lithology consistent with adjacent MW-153. See MW-153 log for lithology.</p> <p>Air knife/Vac to 5 feet bgs</p>	
						35.6		<p>Bottom of Boring at 35.6 feet Well Completion Details: Well constructed with 2-inch Schedule 40 PVC pipe and a 0.020-inch machine slotted screen with #2/12 Sand</p> <p>Total Well Depth: 35.6 feet Well Sump/Endcap: 35.2 to 35.6 feet Well Screen: 25.3 to 35.2 feet Well Riser: 0.6 to 25.3 feet Filter Pack: 83 to 95.5 feet Well Seal: 4 to 23 feet (hydrated bentonite chips) Surface Seal: 0 to 4 feet (concrete) Well Monument: Flush with grade 8-inch steel monument</p>

Project: Former American Linen Supply
Project Number: 1413.001.05.304
Site Location: Seattle, WA
Logged By: RTM
Ecology I.D. BKF-350

Total Drilled Depth: 35.6 feet
Diameter of Boring: 9 inches
Drill Date: 3/30/18
Drilled By: Cascade Drilling
Drill Method: Hollow Stem Auger



Well Completion	PID (PPM)	Sample ID	Blow Count	Sample Recovery (in)	Sample Interval	Depth (Feet)	Graphic Log	Lithologic Description
						0		Lithology consistent with adjacent MW-148. See MW-148 log for lithology.
						2		
						4		
						6		Air knife/Vac to 5 feet bgs
						8		
						10		
						12		
						14		
						16		
						18		
						20		
						22		
						24		
						26		
						28		
						30		Bottom of Boring at 30 feet
						32		Well Completion Details: Well constructed with 2-inch Schedule 40 PVC pipe and a 0.020-inch machine slotted screen with #2/12 Sand
						34		Total Well Depth: 30 feet
						36		Well Sump/Endcap: 29.6 to 30 feet
						38		Well Screen: 19.5 to 29.6 feet
						40		Well Riser: 0.3 to 19.5 feet
						42		Filter Pack: 18 to 30 feet
						44		Well Seal: 4 to 18 feet (hydrated bentonite chips)
						46		Surface Seal: 0 to 4 feet (concrete)
						48		Well Monument: Flush with grade 8-inch steel monument
						50		

Project: Former American Linen Supply	Total Drilled Depth: 30 feet
Project Number: 1413.001.05.304	Diameter of Boring: 9 inches
Site Location: Seattle, WA	Drill Date: 4/10/18
Logged By: RTM	Drilled By: Cascade Drilling
Ecology I.D. BKF-354	Drill Method: Hollow Stem Auger



Well Completion	PID (PPM)	Sample ID	Sample Recovery (in)	Sample Interval	Depth (Feet)	Graphic Log	Lithologic Description
					0		Lithology consistent with adjacent MW-316 See MW-316 log for lithology
					2		
					4		Air knife & vac to 5.5 feet
					6		
			NR		8		
					10		
					12		
			NR		14		
					16		
					18		
					20		
					22		
					24		
			NR		26		
					28		
					30		
					32		
			NR		34		
					36		
					38		
					40		
					42		
					44		
			NR		46		
					48		
					50		Bottom of Boring at 48 feet
					52		NR = Not Recorded
					54		Well Completion Details:
					56		Well constructed with 2-inch Schedule 40 PVC pipe and a 0.020-inch machine slotted screen with #12-20 Sand
					58		Total Well Depth: 47.7 feet
					60		Well Sump/Endcap: 47.4 to 47.7 feet
					62		Well Screen: 37.5 to 47.4 feet
					64		Well Riser: 0.5 to 37.5 feet
							Filter Pack: 36 to 48 feet
							Well Seal: 1.2 to 36 feet (hydrated bentonite chips)
							Surface Seal: 0 to 1.2 feet (concrete)
							Well Monument: Flush with grade 8-inch steel monument

Project: Former American Linen Supply
 Project Number: 1413.001.02.501B
 Site Location: Seattle, WA
 Logged By: H. Small
 Ecology Well Tag: BMF-570

Total Drilled Depth: 48 feet
 Diameter of Boring: 6.25 inches
 Drill Date: 9/11/2019
 Drilled By: Holt Services
 Drill Method: Sonic



Well Completion	PID (PPM)	Sample ID	Sample Recovery (in)	Sample Interval	Depth (Feet)	Graphic Log	Lithologic Description
<p>Concrete</p> <p>Bentonite Chips</p> <p>Sch. 40 PVC Casing</p>					0		Concrete
					2		GRAYISH BROWN SILTY SAND (SM), moist, fine to medium, some fines, few fine to coarse gravel
					4		Air knife & vac to 5 feet
	0.3	MW-316-5			6		
	0.1		51.6		8		
	0.1	MW-316-10			10		
					12		
					14		GRAYISH BROWN SAND (SP), moist, fine, few fines
		MW-316-15	120		16		GRAYISH BROWN SILTY SAND (SM), moist, fine to medium, some fines, few fine to coarse gravel
					18		
	0.1	MW-316-20			20		
	0.3				22		
	0.1				24		
	0.5	MW-316-25	120		26		
	0.4				28		
	0.1	MW-316-30			30		
	0.3				32		
	0.2				34		
	0.1	MW-316-35	120		36		at 35 feet: color transitions to gray
	0.2				38		
	0.1				40		at 37 feet: sample collected for physical analysis

Project: Former American Linen Supply
 Project Number: 1413.001.02.501B
 Site Location: Seattle, WA
 Logged By: H. Small
 Notes: BMF-569

Total Drilled Depth: 70.1 feet
 Diameter of Boring: 6 inches
 Drill Date: 9/9/19-9/10/19
 Drilled By: Holt Services
 Drill Method: Sonic



Well Completion	PID (PPM)	Sample ID	Sample Recovery (in)	Sample Interval	Depth (Feet)	Graphic Log	Lithologic Description
	0.7	MW-316-40					
	0.5				42		
	0.6						
	0.1	MW-316-45	108		44		
	0.3				46		
	0.3				48		GRAY SILT WITH SAND (ML), moist, little sand, few gravel
	0.2	MW-316-50			50		DARK GRAY SILTY SAND (SM), moist, some fines, few gravel
	0.1				52		DARK GRAY SILTY SAND WITH GRAVEL (SM), moist, little fines, little gravel
	0.3				54		GRAY SILT WITH SAND (ML), moist, little fine to medium sand, few gravel
	0.5	MW-316-55	120		56		
	0.8				58		DARK GRAY SILTY SAND (SM), moist, little fines, few gravel at 58 feet: sample collected for physical analysis
	0.2				60		GRAY SILTY SAND WITH GRAVEL (SM), wet, little fines, little gravel
	0.1	MW-316-60			62		
	0.1				64		GRAY SILTY SAND (SM), wet, fine to medium, little fines, trace gravel
	0.2	MW-316-65 MW-2001-65	120		66		GRAY SILTY SAND WITH GRAVEL (SM), wet, some gravel, little fines
0.1				68			
0.1	MW-316-70			70		Bottom of Boring at 70.1 feet	
				72		Well Completion Details: Well constructed with 2-inch Schedule 40 PVC pipe and a 0.020-inch machine slotted screen with #12-20 Sand	
				74		Total Well Depth: 70.1 feet Well Sump/Endcap: 69.8 to 70.1 feet Well Screen: 59.8 to 69.8 feet Well Riser: 0.2 to 59.8 feet Filter Pack: 58 to 67.1 feet Well Seal: 2 to 58 feet (hydrated bentonite chips) Surface Seal: 0 to 2 feet (concrete) Well Monument: Flush with grade 8-inch steel monument	
				76			
				78			
				80			

Project: Former American Linen Supply
 Project Number: 1413.001.02.501B
 Site Location: Seattle, WA
 Logged By: H. Small
 Notes: BMF-569

Total Drilled Depth: 70.1 feet
 Diameter of Boring: 6 inches
 Drill Date: 9/9/19-9/10/19
 Drilled By: Holt Services
 Drill Method: Sonic



Well Completion	PID (PPM)	Sample ID	Sample Recovery (in)	Sample Interval	Depth (Feet)	Graphic Log	Lithologic Description
					0	Concrete	Concrete
					2		BROWN SILTY SAND WITH GRAVEL (SM), moist, fine to medium, some fine to coarse subangular to subrounded gravel (up to 2-inch diameter), trace cobbles (FILL)
					4		Air knife & vac to 5 feet
	0.0	MW-326-5			6		BROWN SILTY SAND (SM), moist, fine to coarse, some fines, few fine to coarse subangular to subrounded gravel
	0.1		57		8		
	0.5				10		
	0.3	MW-326-10			12		
	0.3				14		BROWN SANDY SILT (ML), moist, some fine sand, few fine subangular to subrounded gravel
	0.0				16		at 15 feet: wet
	0.2	MW-326-15		120	18		BROWNISH GRAY SANDY SILT (ML), moist, some fine to medium sand, trace coarse subangular to subrounded gravel, low plasticity, trace wood pieces, mottling
	0.4				20		BLACK SANDY SILT (ML), moist, some fine to coarse sand, trace fine subrounded to rounded gravel, little organics, swamp-like odor
	1.1				22		BROWN SANDY SILT WITH GRAVEL (ML), moist, some fine to coarse sand, little fine to coarse subangular to subrounded gravel
	0.9				24		at 18.5 feet: color transitions to gray
	3.2	MW-326-20			26		GRAY SANDY SILT (ML), moist, some fine sand, gray- and yellow-brown mottling
	0.9				28		GRAY SILTY SAND (SM), wet, fine, some fines
	0.8				30		GRAY SILT WITH SAND (ML), wet, little fine sand, some mottling
	0.6	MW-326-25		120	32		BROWN SILTY SAND (SM), wet, fine to medium, little fines, gradational contact with unit below
	1.1				34		BROWN SAND WITH SILT (SP), wet, fine to medium, few fines
	0.9				36		
	5.3	MW-326-30			38		BROWN SILTY SAND (SM), moist, fine to medium sand, little fines, sand fining with depth
0.8				40		at 39 feet: fine sand	
0.8	MW-326-35		120				
1.1							
1.6	MW-326-40						

Project: Former American Linen Supply
 Project Number: 1413.001.02.501B
 Site Location: Seattle, WA
 Logged By: R. McLaughlin
 Notes: BLR-750

Total Drilled Depth: 100.1 feet
 Diameter of Boring: 6 inches
 Drill Date: 9/9/19-9/10/19
 Drilled By: Holt Services
 Drill Method: Sonic



Well Completion	PID (PPM)	Sample ID	Sample Recovery (in)	Sample Interval	Depth (Feet)	Graphic Log	Lithologic Description	
	1.0							
	0.9				42			
	1.0						at 43 feet: some fines	
	1.0				44			
	0.8	MW-326-45	120				GRAY SANDY SILT (ML), wet, some fine sand, loose	
	1.0				46			
	0.9						GRAY SILT WITH SAND (ML), wet, little fine sand, loose	
	0.9				48			
	0.8						BROWNISH GRAY SILTY SAND (SM), wet, fine to medium, some fines, mottling	
	0.9	MW-326-50				50		BROWN GRAVEL WITH SAND (GP), wet, fine to coarse, subangular to subrounded, some fine to coarse sand, trace fines, mottling present
	1.2							BROWN SILTY SAND (SM), wet, fine to medium, little fines, trace coarse subangular to subrounded gravel
	1.4					52		at 52 feet: 4-inch layer of coarse subangular to subrounded gravel
	1.0					54		
	1.3	MW-326-55	120			56		
	1.1							
	1.4					58		
	0.9							BROWN SILTY SAND WITH GRAVEL (SM), wet, fine to coarse, little fine to coarse subangular to rounded gravel, little fines, coarsening with depth
	1.3	MW-326-60				60		
	1.2							BROWN SILTY SAND WITH GRAVEL (SM), wet, fine to medium, some fine to coarse subangular to rounded gravel, some fines, trace rounded cobbles
	0.8					62		
0.9					64			
0.9	MW-326-65	120			66		at 65 feet: fines "sticky"	
0.7								
1.2							BROWN SILTY SAND (SM), moist, fine to coarse, little fines, few fine subangular to rounded gravel	
1.1					68			
0.7							at 68 feet: trace gravel	
1.3	MW-326-70				70			
1.2								
0.9					72			
1.0					74			
1.1	MW-326-75	120			76			
0.8							GRAY SILTY SAND (SM), wet, fine to coarse, little fines, trace fine gravel, coarsening with depth	
0.7					78			
0.7								
0.9					80			
1.0								
0.8	MW-326-80							

Project: Former American Linen Supply
 Project Number: 1413.001.02.501B
 Site Location: Seattle, WA
 Logged By: R. McLaughlin
 Notes: BLR-750

Total Drilled Depth: 100.1 feet
 Diameter of Boring: 6 inches
 Drill Date: 9/9/19-9/10/19
 Drilled By: Holt Services
 Drill Method: Sonic



Well Completion	PID (PPM)	Sample ID	Sample Recovery (in)	Sample Interval	Depth (Feet)	Graphic Log	Lithologic Description
	0.7	MW-326-85	120		82		GRAY SAND WITH SILT (SP), wet, fine to medium, few fines, trace subrounded to rounded fine to coarse gravel, homogeneous, gradational contact with unit below
	0.8						
	0.7						
	0.8						
	0.8						
	0.9	MW-326-90	120		86		
	0.8						
	0.7						
	0.8						
	0.8						
	1.2	MW-326-95 MW-2001-95	120		90		
	0.8						
	1.1						
	0.9						
	1.0						
1.1	MW-326-100	120		94		GRAY SILTY SAND (SM), wet, fine to medium, little fines, trace subrounded to rounded fine to coarse gravel	
1.1							
1.2							
0.8							
0.9							
1.1				100		Bottom of Boring at 100.1 feet () Denotes PID reading taken in bag headspace, all other readings taken in open air immediately adjacent to soil Well Completion Details: Well constructed with 2-inch Schedule 40 PVC pipe and a 0.020-inch machine slotted screen with #12-20 Sand Total Well Depth: 100.1 feet Well Sump/Endcap: 100 to 100.1 feet Well Screen: 90 to 100 feet Well Riser: 0.3 to 90 feet Filter Pack: 88 to 100.1 feet Well Seal: 2 to 88 feet (hydrated bentonite chips) Surface Seal: 0 to 2 feet (concrete) Well Monument: Flush with grade 8-inch steel monument	
102							
104							
106							
108							
110							
112							
114							
116							
118							
120							

Project: Former American Linen Supply
 Project Number: 1413.001.02.501B
 Site Location: Seattle, WA
 Logged By: R. McLaughlin
 Notes: BLR-750

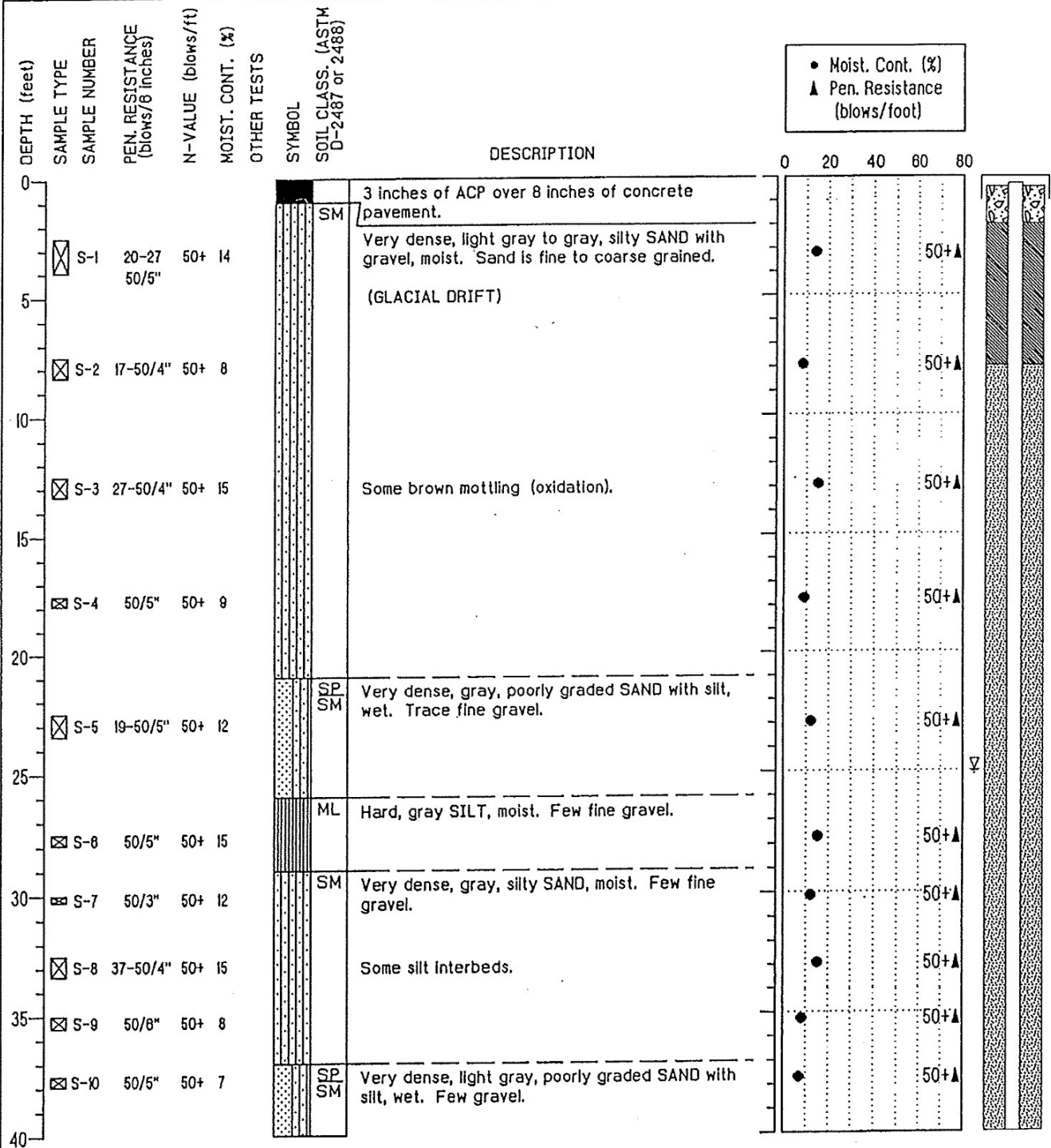
Total Drilled Depth: 100.1 feet
 Diameter of Boring: 6 inches
 Drill Date: 9/9/19-9/10/19
 Drilled By: Holt Services
 Drill Method: Sonic

HONG WEST & ASSOCIATES, INC.

BORING LOG

DRILLING COMPANY: Geoboring & Development, Inc.
 DRILLING METHOD: 4" I.D. Hollow Stem Augers
 SAMPLING METHOD: SPT

TOTAL DEPTH: 100.1 Feet
 SURFACE ELEVATION: 149± Feet
 MEASURING POINT EL.: Feet



NOTE: This log of subsurface conditions applies only at the specified location and on the date indicated, and therefore, may not necessarily be indicative of other times and/or locations.

PROJECT: DENNY WAY CSO

BORING: PB-9

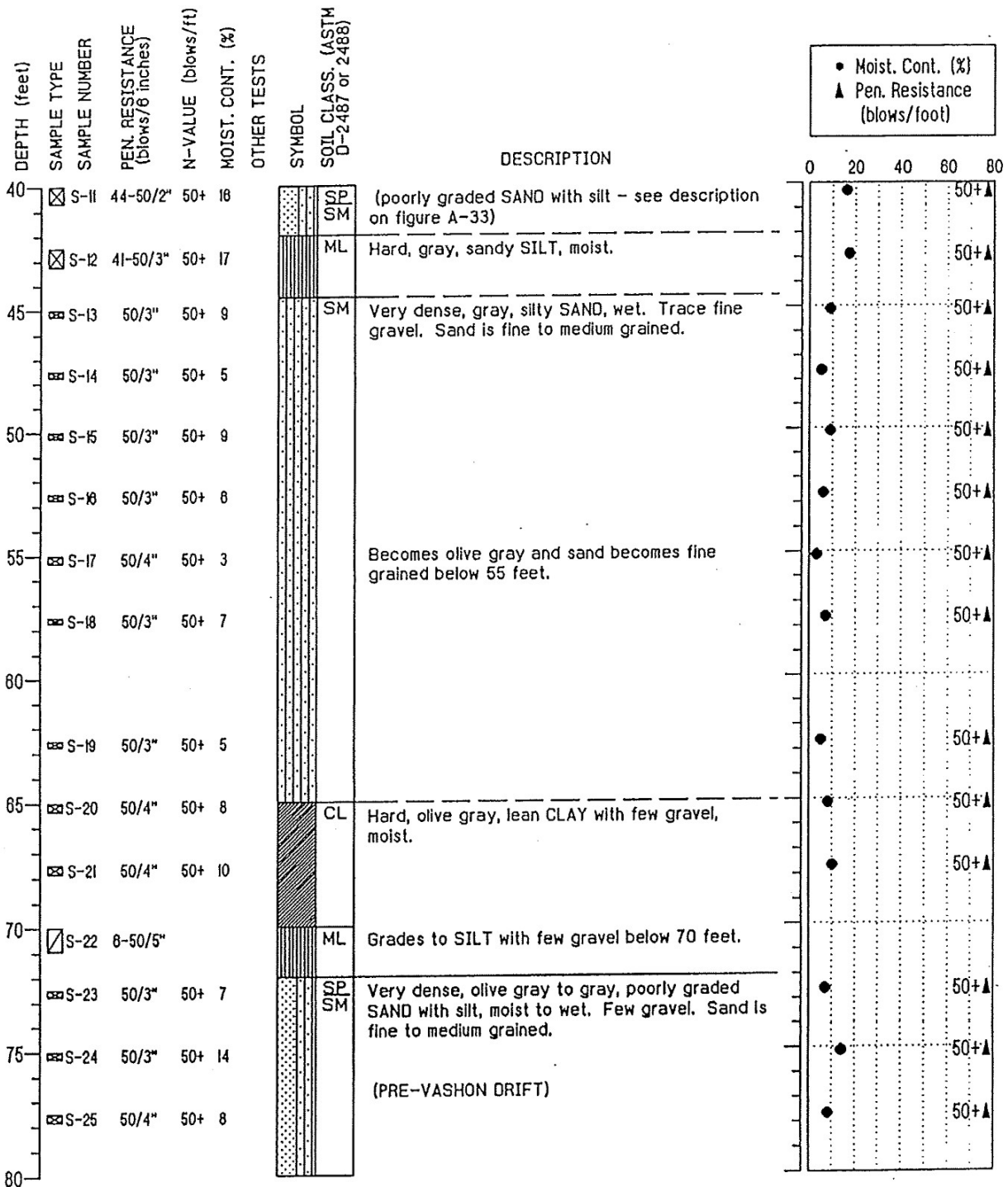
LOCATION: Seattle, Washington

PROJECT NUMBER: 95160-3.3

DATE COMPLETED: 7/15/96

LOGGED BY: R. Dyer

HONG WEST & ASSOCIATES, INC. BORING LOG



PROJECT: DENNY WAY CSO

BORING: PB-9

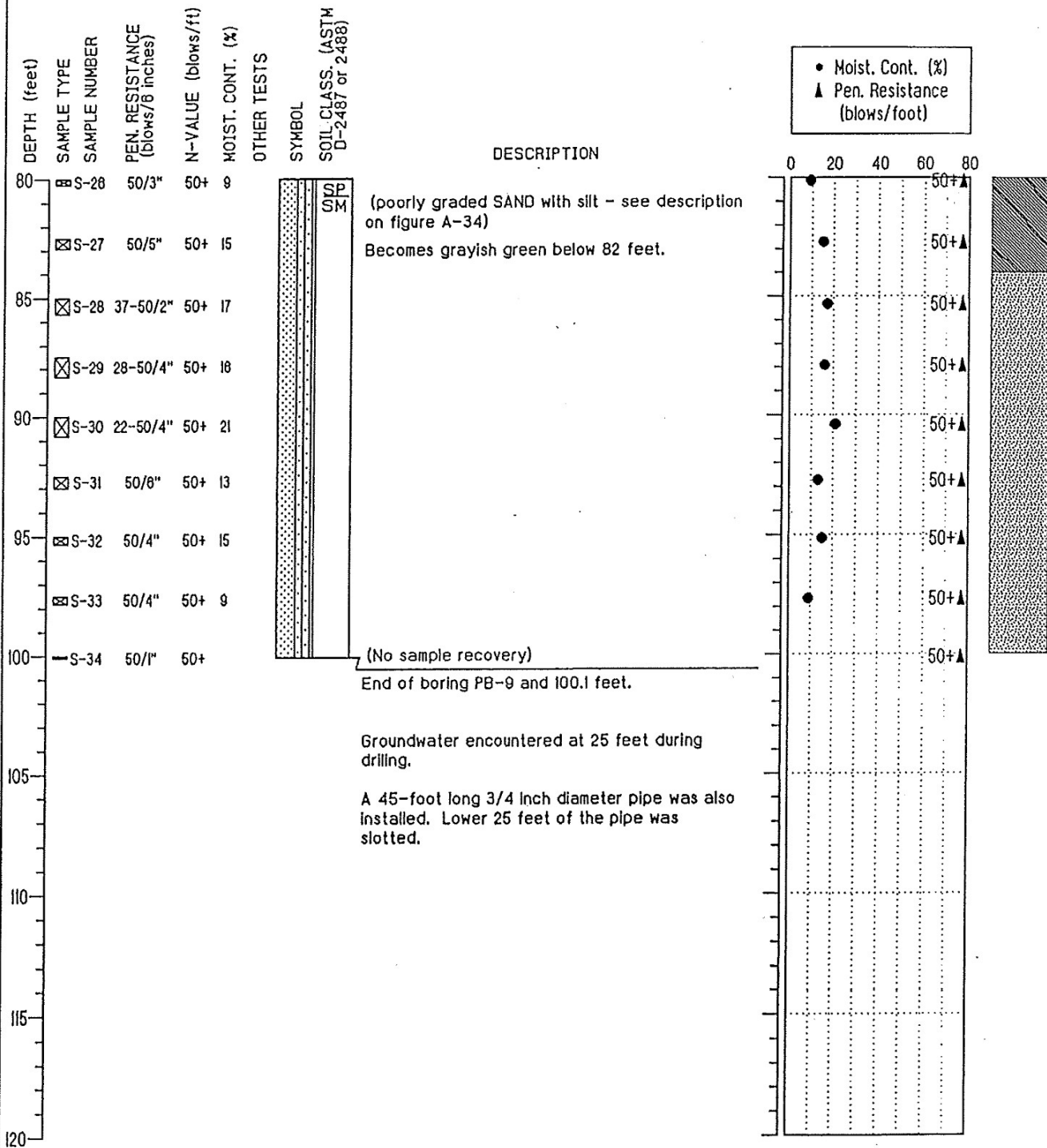
LOCATION: Seattle, Washington

PROJECT NUMBER: 95160-3.3

DATE COMPLETED: 7/15/98

LOGGED BY: R. Dyer

HONG WEST & ASSOCIATES, INC. BORING LOG



PROJECT: DENNY WAY CSO

BORING: PB-9

LOCATION: Seattle, Washington
DATE COMPLETED: 7/15/96
LOGGED BY: R. Dyer

PROJECT NUMBER: 95160-3.3