



Public Participation Plan

Jorgensen Forge Corp
8531 E Marginal Way S, Seattle, WA 98108

Toxics Cleanup Program

Washington State Department of Ecology
Northwest Regional Office
Shoreline, Washington

March 2022



Publication Information

This document is available on the Department of Ecology's website at:
<https://apps.ecology.wa.gov/gsp/Sitepage.aspx?csid=3689>

Cover photo credit

- Ecology, 2010

Related Information

- Cleanup site ID: 3689
- Facility site ID: 2382

Contact Information

Toxics Cleanup Program

Northwest Regional Office

Kelsey Ketcheson

Public Involvement Coordinator

425-240-4353, kelsey.ketcheson@ecy.wa.gov

Maureen Sanchez

Site Manager

206-594-0119, maureen.sanchez@ecy.wa.gov

15700 Dayton Ave N

Shoreline, WA 98133

Phone: 206-594-0000

Website¹: [Washington State Department of Ecology](http://www.ecology.wa.gov)

ADA Accessibility

The Department of Ecology is committed to providing people with disabilities access to information and services by meeting or exceeding the requirements of the Americans with Disabilities Act (ADA), Section 504 and 508 of the Rehabilitation Act, and Washington State Policy #188.

To request an ADA accommodation, contact Ecology by phone at 360-407-6831 or email at ecyadacoordinator@ecy.wa.gov. For Washington Relay Service or TTY call 711 or 877-833-6341. Visit Ecology's website for more information.

¹ www.ecology.wa.gov/contact

Department of Ecology's Regional Offices

Map of Counties Served



Southwest Region 360-407-6300	Northwest Region 206-594-0000	Central Region 509-575-2490	Eastern Region 509-329-3400
---	---	---------------------------------------	---------------------------------------

Region	Counties served	Mailing Address	Phone
Southwest	Clallam, Clark, Cowlitz, Grays Harbor, Jefferson, Mason, Lewis, Pacific, Pierce, Skamania, Thurston, Wahkiakum	PO Box 47775 Olympia, WA 98504	360-407-6300
Northwest	Island, King, Kitsap, San Juan, Skagit, Snohomish, Whatcom	PO Box 330316 Shoreline, WA 98133	206-594-0000
Central	Benton, Chelan, Douglas, Kittitas, Klickitat, Okanogan, Yakima	1250 W Alder St Union Gap, WA 98903	509-575-2490
Eastern	Adams, Asotin, Columbia, Ferry, Franklin, Garfield, Grant, Lincoln, Pend Oreille, Spokane, Stevens, Walla Walla, Whitman	4601 N Monroe Spokane, WA 99205	509-329-3400
Headquarters	Across Washington	PO Box 46700 Olympia, WA 98504	360-407-6000

Public Participation Plan

Jorgensen Forge Corp
8531 E Marginal Way S, Seattle, WA 98108

Toxics Cleanup Program
Washington State Department of Ecology
Northwest Regional Office
Shoreline, WA

March 2022



DEPARTMENT OF
ECOLOGY
State of Washington

Table of Contents

- List of Figures..... 5**
 - Figures.....5
- Public Involvement in Contamination Cleanup 6**
 - Site contacts.....6
 - Public Participation Grants6
- Washington’s Cleanup Laws 7**
 - Model Toxics Control Act.....7
 - State Environmental Policy Act.....7
- Site Information..... 9**
 - Site background9
 - Contamination9
 - Cleanup status10
 - Why this site matters.....10
 - Area community10
- Public Participation Activities 11**
 - How we share information with the community.....12
 - How to share information with us13
 - Americans with Disabilities Act.....14
- Plan Amendments 14**

List of Figures

Figures

Figure 1: Steps in Washington's Cleanup Process 8

Public Involvement in Contamination Cleanup

The Washington State Department of Ecology (Ecology) developed this public participation plan (plan) in cooperation with Star Forge LLC, the parties responsible for cleanup costs. The purpose of the plan is to promote meaningful community involvement during cleanup.

The plan describes ways Ecology will inform the public about contamination investigations and cleanup options throughout the cleanup process. Ecology encourages the public to learn about and get involved in decision-making opportunities. This plan identifies how and when the public can get involved during different stages of the investigation and cleanup of contamination.

This plan is for the Agreed Order (AO) and Interim Action Work Plan (IAWP) for the Jorgensen Forge Corp (site).

Site contacts

To be included in the site record, comments about the cleanup process must be submitted during comment periods. Questions and informal comments or information about the site's history are welcome anytime.

Ecology

Northwest Regional Office
15700 Dayton Ave N
Shoreline, WA 98108

Maureen Sanchez, site manager
Maureen.sanchez@ecy.wa.gov
206-594-0119

Kelsey Ketcheson, public involvement coordinator
Kelsey.ketcheson@ecy.wa.gov
425-240-4353

Potentially Liable Person

Star Forge LLC
8531 East Marginal Way South

Tukwila, WA 98108

James Robertson, President
jrobertson@jorgensenforge.com
281-785-7875

Public Participation Grants

Grants may be available to neighborhood committees, non-profits, and other groups interested in the site. For contaminated sites, these funds can be used to:

- Hire an expert to help interpret technical information²
- Conduct activities that enhance the public's understanding of, and participation in, the cleanup process

² Ecology currently does not have a citizen technical advisor for providing technical assistance to citizens on issues related to the investigation and cleanup of the site.

For more information about public participation grants, please contact Faith Wimberley at 425-275-7285 or faith.wimberley@ecy.wa.gov. You may also visit the [Public Participation Grant website](#).³

Washington's Cleanup Laws

Ecology uses the Model Toxics Control Act (MTCA) and accompanying regulations for cleanup activities.

This plan is required under MTCA, a law that passed in 1989. MTCA provides guidelines for contaminated site cleanup in Washington State and sets standards to ensure the cleanup protects human health and the environment.

Model Toxics Control Act

MTCA began as a grassroots citizen's initiative in 1988, and started the process of systematically cleaning up contaminated sites in Washington. Under MTCA, a current or past property owner or operator may be held responsible for cleaning up contamination on, or coming from, their property to standards that are safe for human health and the environment.

Ecology enacts MTCA and oversees cleanups in the state and issues regulations and guidance governing those cleanups. The regulations are found in [Chapter 173-340 Washington Administrative Code \(WAC\)](#).⁴ Ecology investigates reports of property contamination, and if the contamination is seen as a significant threat to human health or the environment, the contaminated property is placed on the Hazardous Sites List, and the cleanup process begins.

Public participation is an important part of cleanup under the MTCA process. Participation needs are assessed at each cleanup site according to the level of public interest and the degree of risk posed by the contamination. Individuals who live near the site, community groups, businesses, government, other organizations, and interested parties have the opportunity to get involved by commenting on the cleanup process.

Under MTCA, the cleanup process generally includes five phases. Each phase includes an opportunity for the public to review and comment on cleanup documents.

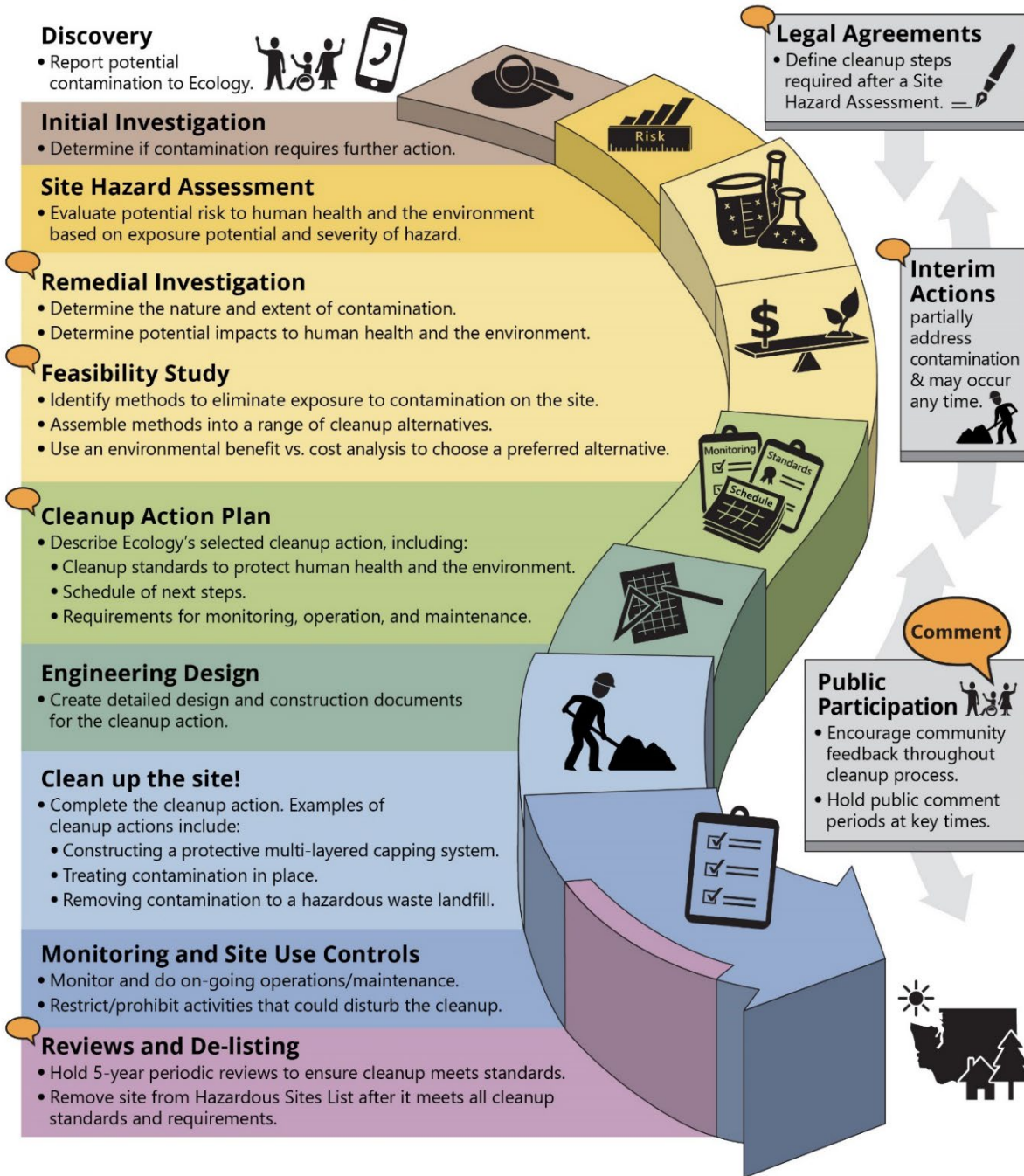
State Environmental Policy Act

The State Environmental Policy Act (SEPA) is followed during review and development of cleanup plans.

³ ecology.wa.gov/About-us/How-we-operate/Grants-loans/Find-a-grant-or-loan/Public-participation-grants

⁴ <https://fortress.wa.gov/ecy/publications/publications/9406.pdf>

Washington's Formal Cleanup Process



 **Washington's Cleanup Law**
Model Toxics Control Act (MTCA)

MTCA defines the cleanup process. This public-initiated environmental law directs upland cleanups (on land or in groundwater) and sediment cleanups (in freshwater or marine environments). Ecology enacts MTCA and regulates the cleanup process.

September 2019
Ecology Publication 19-09-166

Figure 1: Steps in Washington's Cleanup Process⁵

⁵ <https://apps.ecology.wa.gov/publications/SummaryPages/1909166.html>

Site Information

Site background

The Jorgensen Forge Corp site (site) is located in an industrial area along the east bank of the Lower Duwamish Waterway (LDW). It is approximately 21.6 acres and is bordered to the north by the Boeing Plant 2 cleanup site, and to the south by the Boeing Isaacson property. It is bordered to the west by the Lower Duwamish Waterway, and to the east by East Marginal Way South and the King County Regional Airport.

From 1942 to 2018, the property was used to manufacture structural steel, tractor and road equipment, and large-scale metal parts for the aircraft and marine industries. Processes included melting, forging, tempering and machining various specialty metals including steel, aluminum, titanium, specialty metals, and specialized alloys.



Figure 2 Aerial view of the Jorgensen Forge Corp site (looking east) during 1944.



Figure 3 Aerial view of the Jorgensen Forge Corp site (looking west), present day

Contamination

Investigations in the 1990s – 2000s found the following contaminants in soil and groundwater:

- Polychlorinated biphenyls (PCBs)
- Petroleum
- Metals

All of these contaminants were found at levels above the state’s cleanup law, the Model Toxics Control Act ([MTCA](http://www.ecology.wa.gov/mtca)⁶). MTCA requires these contaminants to be cleaned up.

⁶ www.ecology.wa.gov/mtca

Cleanup status

In 2007, Ecology entered into an Agreed Order with the former Site owner, Jorgensen Forge Corp (JFC), to investigate sources of contamination moving from the Site into the LDW. In 2013, the Agreed Order was amended to require an Interim Action (partial cleanup). JFC completed the Interim Action in 2014. In 2017, Ecology entered into a new Agreed Order with the Earle M. Jorgensen Company (EMJ), the site's former owner and operator. In 2018, Manufacturing activities ended at the Site. Star Forge began the process of determining how it could demolish the remaining buildings at the Site.

Why this site matters

The Jorgensen Forge Corp Site is part of the Lower Duwamish Waterway (LDW) Superfund Site, which includes a 5-mile stretch of the Duwamish River that flows north into Elliot Bay. The U.S. Environmental Protection Agency (EPA) added the LDW Superfund Site to the Superfund National Priorities List in 2001. Ecology is working to stop or reduce sources of contamination to the LDW Superfund Site, an effort known as "source control," so that EPA can proceed with the cleanup of the river sediment.

Area community

The Jorgensen Forge Corp site is located in the Duwamish Valley area of Seattle. The area includes two neighborhoods, Georgetown and South Park, which are separated by the LDW.

Demographic data below is from:

- The Environmental Protection Agency's [Environmental Justice Screening and Mapping Tool \(EJSCREEN\)](https://ejscreen.epa.gov/mapper/index.html)⁷ (Figure 4)

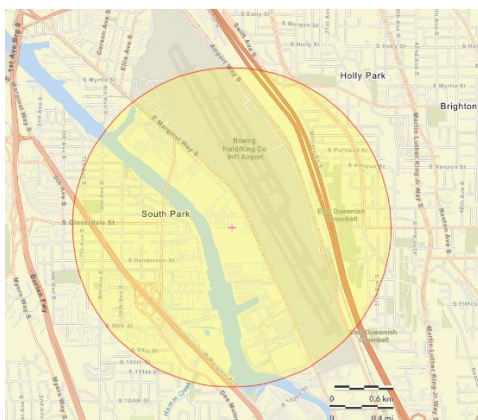


Figure 2 The site (represented by a pink cross) and a 1-mile radius shown by the yellow circle. This area includes a portion of the LDW and the South Park neighborhood. Source: EJSCREEN report, version 2020.

⁷ <https://ejscreen.epa.gov/mapper/index.html>

The percentage of the population that identifies with each racial group is as follows:

- White: 32%
- Asian: 31%
- Black: 16%
- Some other race: 13%
- Two or more races: 6%
- American Indian: 1%
- Pacific Islander: 1%

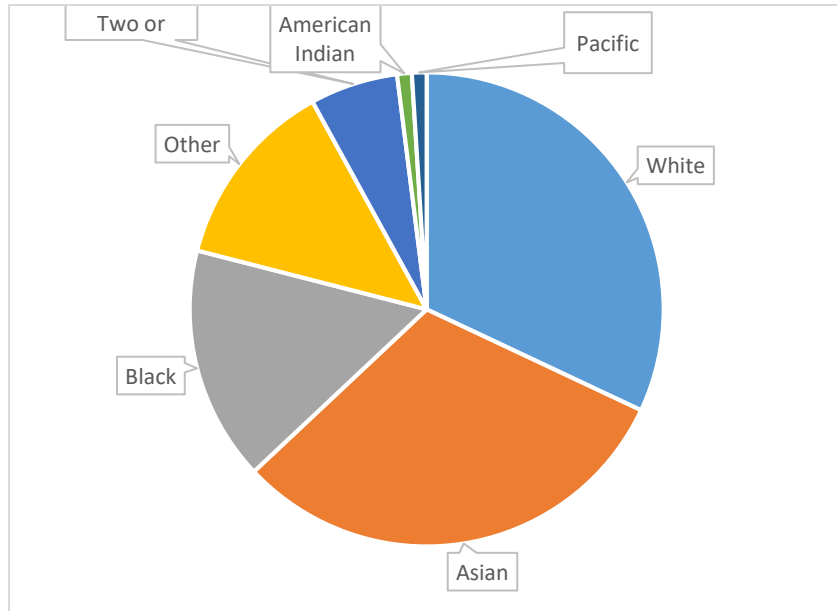


Figure 3 Racial demographics around the site location.

Ecology will reach out to cultural community organizations as part of our outreach and provide information in other languages as appropriate following federal guidance.⁸ The non-English language(s) most widely spoken in this area are Spanish, Chinese, and Vietnamese. When appropriate, Ecology will provide outreach in these languages. We strive to make our public participation efforts as inclusive as possible and welcome your input about how to best reach the nearby community.

There are no federally recognized tribes that own land that could be affected by the project work. However, Ecology will ensure that tribes with interest in natural and cultural resources will be engaged with any decision-making process for this Site and have ample opportunity to be involved throughout the process on a government-to-government basis. We will also engage with the Duwamish Tribe.

Public Participation Activities

Members of the public may ask questions, submit informal comments, or share site information at any time. Interested parties do not need to wait for a formal public comment period to contact Ecology.

However, to be included in the formal site record, comments about the site investigation, cleanup alternatives, or cleanups must be submitted during formal comment periods. In addition, the public is invited to review site documents before they become final. This is the most direct and influential way to learn more about the site and be involved in the cleanup’s decision-making.

⁸ Guidance to Environmental Protection Agency Financial Assistance Recipients Regarding Title VI Prohibition Against National Origin Discrimination Affecting Limited English Proficient Persons, 69 Fed. Reg. § 35602 (June 15, 2004).

How we share information with the community

During specific stages of the cleanup, Ecology will mail notices about public comment periods to addresses surrounding the site. The mailing list area will vary depending on the type of contamination and where it's located, but the list will at least include addresses within a 1/4-mile radius of the site and other interested organizations and individuals. These notices will provide general information about the site, contact information for submitting comments, and times and locations of public meetings or hearings or how to request one if not yet scheduled.

Ecology may also develop documents outside of comment periods to keep the community updated on the site's status. These informational documents will be available online and at document repositories. Print copies may be mailed to the nearby community if we feel the message warrants the associated cost and resources.

Comment period notices and other site announcements may also be posted in various locations throughout the community (for example, local businesses, schools, libraries).

Postal mailing list

Ecology maintains a mailing list that includes addresses within a 1-mile radius of the site and relevant local, state, and federal government contacts.

These people receive public comment notices when draft documents are available.

We will add additional individuals, organizations, and other interested parties to the mailing list as requested. If you would like to be added to the mailing list for this site, please contact Kelsey Ketcheson at 425-240-4353 or Kelsey.ketcheson@ecy.wa.gov.

Site Register

Public comment periods, events, and other cleanup notices are published in Ecology's [Site Register](#).⁹ To receive the *Site Register* by email, please [subscribe online](#),¹⁰ or contact Sarah Kellington at sarah.kellington@ecy.wa.gov or 360-407-7466.

Newspaper display ads or legal notices

We announce public comment periods and events in ads or notices published in *The Seattle Times*. We will also publish notice on our [Public Input & Events Listing](#).¹¹

⁹ ecology.wa.gov/Regulations-Permits/Guidance-technical-assistance/Site-Register-lists-and-data

¹⁰ https://public.govdelivery.com/accounts/WAECY/subscriber/new?topic_id=WAECY_118

¹¹ ecology.wa.gov/Events/Search/Listing

Email lists

Ecology maintains an email list to update interested persons about this site. If you would like to be added to the email list for this site, please [subscribe online](#)¹².

Ecology's website and social media platforms

We maintain a website for the [Jorgensen Forge Corp](#) site.¹³ The website provides site information, and you may download cleanup documents.

We may also share information about cleanup sites through [news releases, our ECOconnect blog, and social media](#).¹⁴

Document repositories

During public comment periods, you can find print documents at the following locations:

Seattle Public Library, South Park branch
8604 8th Ave S
Seattle, WA 98108
206-615-1688

Washington Department of Ecology
Northwest Regional Office
15700 Dayton Ave N
Shoreline, WA 98133

To schedule an appointment, please contact 206-594-0000

Signs around the cleanup site

We may also install signs displaying information about project status, traffic impacts, and health risks around the cleanup site.

How to share information with us

At minimum, MTCA requires 30-day public comment periods for draft cleanup documents and 14-day comment periods SEPA documents. SEPA documents are often made available for public review with other cleanup documents. In that case, we combine the comment periods, and they last at least 30 days. We may hold comment periods longer than 30 days.

We may also identify public concerns and cleanup goals by meeting with and soliciting information from interested community members and organizations. To collaborate with us about this site, please contact Kelsey Ketcheson at 425-240-4353 or Kelsey.ketcheson@ecy.wa.gov.

¹² https://public.govdelivery.com/accounts/WAECY/subscriber/new?topic_id=WAECY_37

¹³ <https://apps.ecology.wa.gov/gsp/Sitepage.aspx?csid=3689>

¹⁴ ecology.wa.gov/About-us/Get-to-know-us/News

Public comment periods

Formal 30-day comment periods allow interested members of the public to comment on draft documents, legal agreements, and proposed cleanup actions. If there is significant interest, Ecology may extend the public comment period. When Ecology oversees SEPA determinations, we hold comment periods for at least two weeks and may extend to 30 days or more when other cleanup documents are concurrently available for review.

Following a comment period, we publish all the input we received and respond to significant comments and questions. If the comments result in significant changes to the cleanup documents, then the documents will be revised and re-issued for public review. If the comments do not result in significant changes, then they become final.

Public events

We hold public meetings (online or in-person), workshops, open houses, and public hearings based on community interest. If we have not scheduled a meeting, we will hold one if 10 people request it, and this may cause us to extend a public comment period so the meeting occurs during it.

Events are held at locations close to the site that meet Americans with Disabilities Act standards. Public meetings, workshops, open houses, and hearings are always announced in advance using a variety of methods.

Americans with Disabilities Act

To request ADA accommodation for disabilities, or printed materials in a format for the visually impaired, contact the Ecology ADA Coordinator at 360-407-6831 or ecyadacoordinator@ecy.wa.gov, or visit <https://ecology.wa.gov/accessibility>. People with impaired hearing may call Washington Relay Service at 711. People with speech disability may call TTY at 877-833-6341.

Plan Amendments

Ecology developed this plan following MTCA regulations (WAC 173-340-600). We review it as the cleanup progresses and amend it as necessary. You may suggest amendments to Kelsey Ketcheson at 425-240-4353 or Kelsey.ketcheson@ecy.wa.gov.

This plan includes information for the public regarding opportunities for public involvement and comment. The outreach activities discussed in this section reflect Ecology's current plans for keeping the public informed and providing ways for those interested in the site to communicate their concerns and questions to us.

If you feel the planned outreach activities and mechanisms described in this plan are insufficient, or should otherwise be modified, we will work to find solutions. New outreach activities or outreach tools established as a result can be implemented right away, with or without amending this plan.