



**CONOCOPHILLIPS COMPANY  
GROUNDWATER MONITORING REPORT**

July 21, 2004

Site No.: 255353 Site Address: 600 Westlake Avenue, Seattle, Washington  
 ConocoPhillips Site Manager: Kipp Eckert  
 Consultant/Contact Person: Delta Environmental Consultants, Inc. -- Eric Larsen  
 Primary Agency/Regulatory ID No.: Washington DOE Northwest Region

**WORK PERFORMED THIS QUARTER [Second - 2004]**

- Measured depth to water in 10 monitoring wells (MW-32A, MW-33, MW-34, MW-35, MW-37, MW-45, MW-50, MW-51, MW-52, and MW-53).
- Purged and sampled groundwater from 10 monitoring wells (MW-32A, MW-33, MW-34, MW-35, MW-37, MW-45, MW-50, MW-51, MW-52, and MW-53) on June 22, 2004.
- Analyzed groundwater samples for total petroleum hydrocarbons as gasoline (TPH-G) using Northwest Method NWTPH-Gx, TPH as diesel and heavy oil (TPH-D and TPH-O) using Northwest Method NWTPH-Dx, and benzene, toluene, ethylbenzene, and total xylenes (BTEX) using EPA Method 8260B.

**WORK PROPOSED FOR NEXT QUARTER [Third - 2004]**

- Measure depth to water in 18 monitoring wells (SMW-3, MW-3, MW-32A, MW-33, MW-34, MW-35, MW-36, MW-37, MW-38, MW-40, MW-43, MW-44, MW-45, MW-47, MW-50, MW-51, MW-52, and MW-53).
- Purge and sample groundwater from 18 monitoring wells (SMW-3, MW-3, MW-32A, MW-33, MW-34, MW-35, MW-36, MW-37, MW-38, MW-40, MW-43, MW-44, MW-45, MW-47, MW-50, MW-51, MW-52, and MW-53).
- Analyze groundwater samples for TPH-G using Northwest Method NWTPH-Gx, TPH-D and TPH-O using Northwest Method NWTPH-Dx, BTEX using EPA Method 8260B.
- Next sampling event is scheduled for September 2004.

**SUMMARY**

Frequency of Sampling Events:	<u>Quarterly</u>	(Quarterly, etc.)
Approximate Depth to Groundwater:	<u>10.34 – 12.88</u>	(Measured Feet)
Groundwater Gradient:	<u>North-northeast</u>	(Direction)
	<u>0.005</u>	(ft/ft)
Maximum Benzene Concentration:	<u>2,320 (MW-34)</u>	(ppb)
Measurable Free Product Detected:	<u>None</u>	(Yes - ID well(s)/No)
Free Product Recovered This Quarter:	<u>None</u>	(gallons)
Cumulative Free Product Recovered to Date:	<u>43,632</u>	(gallons)
Water Wells or Surface Waters w/in a 2000'	<u>Lake Union</u>	
Radius and Respective Direction:	<u>400 ft North</u>	(Distance and Direction)
Current Remedial Action:	<u>AS/SVE</u>	(SVE/AS/P&T/DVE/ Product Removal/Bio/etc.)
Permits for Discharge:	<u>PSAPCA No. 4397</u>	(NPDES, POTW, etc.)



## CONOCOPHILLIPS COMPANY GROUNDWATER MONITORING REPORT

July 21, 2004

Site No.: 255353 Site Address: 600 Westlake Avenue, Seattle, Washington  
ConocoPhillips Site Manager: Kipp Eckert  
Consultant/Contact Person: Delta Environmental Consultants, Inc. – Eric Larsen  
Primary Agency/Regulatory ID No.: Washington DOE Northwest Region

### DISCUSSION

- TPH-G was detected above the laboratory reporting limit in groundwater samples collected from Wells MW-32A, MW-33, MW-34, MW-35, MW-37, MW-45, and MW-50 through MW-53, at concentrations ranging from 104 ppb (MW-51) to 6,760 ppb (MW-34).
- TPH-D was detected above the laboratory reporting limit in groundwater samples collected from Wells MW-32A, MW-33, MW-34, MW-35, MW-37, MW-45, and MW-50 through MW-53, at concentrations ranging from 129 ppb (MW-51) to 1,900 ppb (MW-34).
- TPH-O was detected above the laboratory reporting limit in groundwater samples collected from Wells MW-32A, MW-33, MW-37, and MW-45 at concentrations ranging from 294 ppb (MW-37) to 443 ppb (MW-33).
- Benzene was detected above the laboratory reporting limit in groundwater samples collected from Wells MW-32A, MW-33, MW-34, MW-35, MW-37, MW-50, MW-52, and MW-53, at concentrations ranging from 1.27 ppb (MW-35) to 2,320 ppb (MW-34).
- Toluene was detected above the laboratory reporting limit in groundwater samples collected from Wells MW-33, MW-34, MW-37, MW-50, and MW-53 at concentrations ranging from 2.4 ppb (MW-50) to 85.2 ppb (MW-53).
- Ethylbenzene was detected above the laboratory reporting limit in groundwater samples collected from Wells MW-32A, MW-33, MW-34, MW-37, MW-50, MW-52, and MW-53 at concentrations ranging from 1.46 ppb (MW-37) to 395 ppb (MW-34).
- Total xylenes were detected above the laboratory reporting limit in groundwater samples collected from MW-32A, MW-33, MW-34, MW-37, MW-50, and MW-53 at concentrations ranging from 14.25 ppb (MW-37) to 425 ppb (MW-53).
- TPH and BTEX concentrations have decreased significantly with respect to historical levels in Wells MW-32A, MW-33, MW-35, MW-37, MW-45, MW-50, MW-51, MW-52, and MW-53. Additionally, free product previously observed in Wells MW-33 and MW-37 has not been observed in the wells since 2002.
- First quarter concentrations of TPH-G, TPH-D, and benzene showed a significant increase in Well MW-34 with respect to the previous two events. However, the concentrations appeared to be generally consistent with historical values in MW-34. Second quarter concentrations indicate a general decreasing trend with respect to first quarter concentrations.



**Delta**  
Environmental  
Consultants, Inc.

**CONOCOPHILLIPS COMPANY  
GROUNDWATER MONITORING REPORT**

July 21, 2004

Site No.: 255353 Site Address: 600 Westlake Avenue, Seattle, Washington  
 ConocoPhillips Site Manager: Kipp Eckert  
 Consultant/Contact Person: Delta Environmental Consultants, Inc. – Eric Larsen  
 Primary Agency/Regulatory ID No.: Washington DOE Northwest Region

**LIMITATIONS**

The services described in this report were performed in accordance with generally accepted professional consulting principles and practices. No other warranty, either express or implied, is made. These services were performed in accordance with terms established with our client. This report is solely for the use of our client and reliance on any part of this report by a third party is at such party's sole risk.

Delta appreciates the opportunity to provide environmental services for ConocoPhillips Company. Please call if you have any questions regarding the contents of this report.

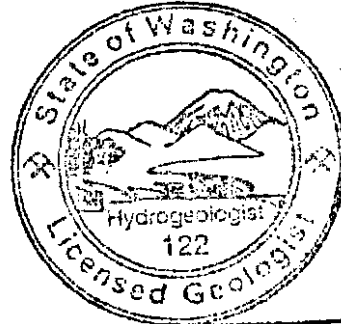
Sincerely,  
DELTA ENVIRONMENTAL CONSULTANTS, INC.

*Tena Seeds*

Tena Seeds, E.I.T  
Project Engineer

*Eric Larsen*

Eric Larsen, L.H.G.  
Senior Geologist



**Eric Bruce Larsen**

**ATTACHMENTS**

- Table 1 – Analytical Results and Groundwater Elevations
- Figure 1 – Site Map with Groundwater Elevation Contours
- Figure 2 – Groundwater Petroleum Hydrocarbon and BTEX Concentrations
- Laboratory Analytical Report and Chain-of-Custody Documentation
- Groundwater Sampling Procedures and Field Sheets

cc: LUST Coordinator, Washington State Dept. of Ecology – Northwest Regional Office, Bellevue, WA

**TABLE 1**  
**ANALYTICAL RESULTS AND GROUNDWATER ELEVATIONS**

ConocoPhillips Site No. 255353  
600 Westlake Avenue N.  
Seattle, Washington

Sample I.D. TOC	Sample Date	TPH-Gasoline (µg/l)	TPH-Diesel (µg/l)	TPH-Oil (µg/l)	Benzene (µg/l)	Toluene (µg/l)	Ethyl-benzene (µg/l)	Xylenes (µg/l)	DO (mg/l)	DTW (feet)	SPH (feet)	GWE (feet)
<b>SMW-3</b>	03/31/99 <sup>2</sup>	<50.0	360	<750	<0.500	<0.500	0.53	4.97	--	9.01	0.00	--
-- <sup>1</sup>	06/30/99 <sup>2</sup>	<50.0	639	<750	<0.500	0.61	<0.500	1.32	--	9.55	0.00	--
	12/08/99 <sup>2</sup>	<50.0	<484	<1,450	<0.500	<0.500	<0.500	<1.00	--	8.75	0.00	--
	06/20/00 <sup>2</sup>	<50.0	<250	<750	<0.500	0.59	<0.500	1.86	--	8.89	0.00	--
	12/19/00	--	--	--	--	--	--	--	--	NM	NM	--
	06/15/01 <sup>2</sup>	<50.0	368	<866	<0.500	<0.500	<0.500	<1.00	--	7.23	0.00	--
	06/26/01	--	--	--	--	--	--	--	--	NM	NM	--
	09/07/01 <sup>2</sup>	<50.0	385	<571	<0.500	<0.500	<0.500	<1.00	--	9.19	0.00	--
	10/10/01	--	--	--	--	--	--	--	--	NM	NM	--
	12/28/01	<50.0	1,160	<500	<0.500	0.902	<0.500	2.78	--	8.89	0.00	--
	03/08/02	--	--	--	--	--	--	--	--	NM	NM	--
	06/24/02	--	--	--	--	--	--	--	--	NM	NM	--
	09/26/02	<100	<250	<500	1.83	<2.00	<1.00	<1.50	--	10.32	0.00	--
	12/12/02	--	--	--	--	--	--	--	--	NM	NM	--
	03/13/03	<50.0	<250	<500	<0.500	<0.500	<0.500	<1.00	--	10.99	0.00	--
	06/12/03	--	--	--	--	--	--	--	--	NM	NM	--
	09/19/03	<50.0	<287	<575	<0.500	<0.500	<0.500	<1.00	--	11.00	0.00	--
	01/14/04	--	--	--	--	--	--	--	--	NM	NM	--
	03/30/04	<100	<119	<238	<1	<1	<1	<2	2.10	10.42	0.00	--
	06/22/04	--	--	--	--	--	--	--	--	NM	NM	--
<b>SMW-4</b>	03/31/99	LPH Present							--	8.70	Trace	--
-- <sup>1</sup>	06/30/99	LPH Present							--	8.20	Trace	--
	12/08/99	Inaccessible							--	NM	NM	--
	06/20/00	Inaccessible							--	NM	NM	--
	12/19/00	Inaccessible							--	NM	NM	--
	06/15/01	Inaccessible							--	NM	NM	--
	06/26/01	--	--	--	--	--	--	--	--	NM	NM	--
	09/07/01	Inaccessible							--	NM	NM	--
	10/10/01	--	--	--	--	--	--	--	--	NM	NM	--
	12/28/01	Inaccessible							--	NM	NM	--
	03/08/02	--	--	--	--	--	--	--	--	NM	NM	--
	06/24/02	--	--	--	--	--	--	--	--	NM	NM	--
	09/26/02	--	--	--	--	--	--	--	--	NM	NM	--
	12/12/02	--	--	--	--	--	--	--	--	NM	NM	--
	03/13/03	--	--	--	--	--	--	--	--	9.55	0.00	--
	06/12/03	--	--	--	--	--	--	--	--	NM	NM	--
	09/19/03	--	--	--	--	--	--	--	--	10.58	0.00	--
	01/14/04	Monitoring Discontinued							--	NM	NM	--

**TABLE 1**  
**ANALYTICAL RESULTS AND GROUNDWATER ELEVATIONS**

ConocoPhillips Site No. 255353  
600 Westlake Avenue N.  
Seattle, Washington

Sample I.D. TOC	Sample Date	TPH- Gasoline (µg/l)	TPH- Diesel (µg/l)	TPH- Oil (µg/l)	Benzene (µg/l)	Toluene (µg/l)	Ethyl- benzene (µg/l)	Xylenes (µg/l)	DO (mg/l)	DTW (feet)	SPH (feet)	GWE (feet)
<b>MW-3</b>	10/10/01	14,100	4,060	1,990	1,070	<25.0	1,040	292	--	10.11	0.00	--
-- <sup>1</sup>	12/28/01	3,340	1,810	<500	92.6	4.62	146	51.2	--	9.61	0.00	--
	03/08/02	--	--	--	--	--	--	--	--	NM	NM	--
	06/24/02	--	--	--	--	--	--	--	--	NM	NM	--
	09/26/02 <sup>3</sup>	10,500	1,820	<500	326	14.0	685	447	--	10.96	0.00	--
	12/12/02	--	--	--	--	--	--	--	--	NM	NM	--
	03/13/03	17,200	1,440	<595	86.6	38.1	434	798	--	7.87	0.00	--
	06/12/03	--	--	--	--	--	--	--	--	NM	NM	--
	09/19/03	--	--	--	--	--	--	--	--	NM	NM	--
	01/14/04	--	--	--	--	--	--	--	--	NM	NM	--
	03/30/04	3,040	1,950	<285	57.1	<5	24.3	23.57	0.79	9.90	0.00	--
	06/22/04	--	--	--	--	--	--	--	--	NM	NM	--
<b>MW-32A</b>	03/31/99	--	--	--	--	--	--	--	--	10.47	0.00	10.23
20.70	06/30/99	--	--	--	--	--	--	--	--	9.60	0.00	11.10
	12/08/99	--	--	--	--	--	--	--	--	11.07	0.00	9.63
	06/20/00	--	--	--	--	--	--	--	--	11.40	0.00	9.30
	12/19/00 <sup>2</sup>	7,010	1,740	<750	4,430	136	438	182	--	10.90	0.00	9.80
	06/15/01 <sup>2</sup>	13,700	2,810	<846	2,370	11.2	272	31.1	--	11.31	0.00	9.39
	06/26/01 <sup>2</sup>	15,500	1,620	<750	8,780	1,110	1,230	1,020	--	11.85	0.00	8.85
	09/07/01 <sup>2</sup>	17,100	4,220	822	5,870	19.9	684	110	--	10.81	0.00	9.89
	10/10/01	--	--	--	--	--	--	--	--	NM	NM	--
	12/28/01	12,200	4,260	711	3,570	180	537	393	--	11.29	0.00	9.41
	03/08/02	16,400	4,140	769	4,900	142	619	247	--	11.49	0.00	9.21
	06/24/02	6,850	2,040	577	2,820	7.43	221	59.1	--	11.56	0.00	9.14
	09/26/02 <sup>3</sup>	6,580	3,740	670	1,930	31.4	204	89.7	--	12.88	0.00	7.82
	12/12/02	6,750	3,530	528	1,450	55.6	229	283	--	12.72	0.00	7.98
	03/13/03	13,000	2,550	<581	1,990	222	419	806	--	10.95	0.00	9.75
	06/12/03	17,400	2,730	<500	4,830	200	745	262	--	11.92	0.00	8.78
	09/19/03	1,420	<294	<588	64.2	42.7	7.49	135	--	12.67	0.00	8.03
	01/14/04	1,580	316	<253	28.9	4.13	13.1	32.5	3.1	11.33	0.00	9.37
	03/30/04	7,310	838	<276	18.3	<10	209	122	2.43	12.39	0.00	8.31
	06/22/04	3,330	1,470	381	149	<10	72.5	43.8	0.5	12.62	0.00	8.08

**TABLE 1**  
**ANALYTICAL RESULTS AND GROUNDWATER ELEVATIONS**  
 ConocoPhillips Site No. 255353  
 600 Westlake Avenue N.  
 Seattle, Washington

Sample I.D. TOC	Sample Date	TPH-Gasoline (µg/l)	TPH-Diesel (µg/l)	TPH-Oil (µg/l)	Benzene (µg/l)	Toluene (µg/l)	Ethyl-benzene (µg/l)	Xylenes (µg/l)	DO (mg/l)	DTW (feet)	SPH (feet)	GWE (feet)
<b>MW-33</b>	03/31/99	--	--	--	--	--	--	--	--	10.38	0.00	10.37
20.75	06/30/99	--	--	--	--	--	--	--	--	9.52	0.00	11.23
	12/08/99	--	--	--	--	--	--	--	--	10.97	0.00	9.78
	06/20/00	--	--	--	--	--	--	--	--	11.33	0.00	9.42
	12/19/00	Inaccessible							--	NM	NM	--
	06/15/01	LPH Present							--	12.72	2.50	10.03
	06/26/01	--	--	--	--	--	--	--	--	NM	NM	--
	09/07/01	LPH Present							--	NM	0.30	--
	10/10/01	--	--	--	--	--	--	--	--	NM	NM	--
	12/28/01	141,000	25,200	2,680	5,360	32,500	3,410	22,700	--	11.21	0.00	9.54
	03/08/02	126,000	31,400	3,420	2,660	21,600	3,420	24,800	--	11.37	0.00	9.38
	06/24/02	205,000	51,700	14,000	1,510	14,200	3,770	28,900	--	11.36	0.00	9.39
	09/26/02	LPH Present							--	12.45	0.10	8.38
	12/12/02	--	--	--	--	--	--	--	--	12.34	0.00	8.41
	03/13/03	--	--	--	--	--	--	--	--	10.59	0.00	10.16
	06/12/03	30,900	4,170	<562	396	526	474	3,890	--	11.65	Sheen	9.10
	09/19/03	125	<291	<581	0.704	<0.500	<0.500	4.30	--	6.70	0.00	14.05
	01/14/04	524	<135	<271	17	3.7	7.65	31	0.6	12.03	0.00	8.72
	03/30/04	2,680	725	<256	218	14.7	53.2	150.4	1.72	12.49	0.00	8.26
	06/22/04	3,500	1,330	443	197	12.1	99.2	217.3	1.2	12.66	0.00	8.09
<b>MW-34</b>	03/31/99 <sup>2</sup>	33,400	1,910	<750	5,970	1,740	1,400	3,820	--	10.85	0.00	10.57
21.42	06/30/99 <sup>2</sup>	28,500	4,840	984	4,340	1,320	1,490	3,610	--	10.18	0.00	11.24
	12/08/99 <sup>2</sup>	62,400	2,500	<1,360	12,900	7,440	3,240	9,210	--	11.33	0.00	10.09
	06/20/00 <sup>2</sup>	25,000	<250	<750	6,360	480	2,190	3,930	--	11.68	0.00	9.74
	12/19/00	--	--	--	--	--	--	--	--	NM	NM	--
	06/15/01 <sup>2</sup>	25,800	4,780	<883	5,300	90	1,930	2,190	--	11.85	0.00	9.57
	06/26/01	--	--	--	--	--	--	--	--	NM	NM	--
	09/07/01 <sup>2</sup>	17,800	4,510	722	3,540	44.9	1,510	2,180	--	11.86	0.00	9.56
	10/10/01	--	--	--	--	--	--	--	--	NM	NM	--
	12/28/01	19,000	8,400	752	5,320	1,200	406	1,010	--	11.46	0.00	9.96
	03/08/02	59,200	8,550	661	7,200	8,610	2,190	8,200	--	11.70	0.00	9.72
	06/24/02	12,500	4,200	614	2,140	651	659	1,160	--	11.91	0.00	9.51
	09/26/02 <sup>3</sup>	13,800	6,270	<1,160	5,840	21.8	280	87	--	12.80	0.00	8.62
	12/12/02	14,500	11,000	681	5,130	44.7	333	224	--	12.98	0.00	8.44
	03/13/03	25,600	6,480	<500	6,030	668	775	1,130	--	11.67	0.00	9.75
	06/12/03	13,000	2,880	<500	1,590	735	450	1,360	--	12.04	0.00	9.38
	09/19/03	351	<301	<602	9.91	11.7	6.48	34.6	--	12.83	0.00	8.59
	01/14/04	160	<122	<245	23.7	<0.5	2.11	<1	0.2	12.00	0.00	9.42
	03/30/04	15,100	1,120	<300	3,060	238	564	846.6	1.68	12.62	0.00	8.80
	06/22/04	6,760	1,900	<238	2,320	14.3	395	279.8	0.5	12.88	0.00	8.54

**TABLE 1  
ANALYTICAL RESULTS AND GROUNDWATER ELEVATIONS**

ConocoPhillips Site No. 255353  
600 Westlake Avenue N.  
Seattle, Washington

Sample I.D. TOC	Sample Date	TPH- Gasoline (µg/l)	TPH- Diesel (µg/l)	TPH- Oil (µg/l)	Benzene (µg/l)	Toluene (µg/l)	Ethyl- benzene (µg/l)	Xylenes (µg/l)	DO (mg/l)	DTW (feet)	SPH (feet)	GWE (feet)
<b>MW-35</b>	03/31/99	Obstructed by vehicle							--	NM	NM	--
20.10	06/30/99	Obstructed by vehicle							--	NM	NM	--
	12/08/99	Obstructed by vehicle							--	NM	NM	--
	06/20/00	Obstructed by vehicle							--	NM	NM	--
	12/19/00	Obstructed by vehicle							--	NM	NM	--
	06/15/01	--	--	--	--	--	--	--	--	NM	NM	--
	06/26/01 <sup>2</sup>	504	464	<750	11.3	27.5	5.52	28.4	--	10.60	0.00	9.50
	09/04/01 <sup>2</sup>	263	903	<564	2.36	<0.500	<0.500	<1.00	--	10.54	0.00	9.56
	10/10/01	--	--	--	--	--	--	--	--	NM	NM	--
	12/28/01	691	1,160	<500	28.7	0.898	14.1	13.2	--	10.54	0.00	9.56
	03/08/02	638	1,100	<500	16.2	0.939	7.05	6.91	--	10.72	0.00	9.38
	06/24/02	Obstructed by vehicle							--	NM	NM	--
	09/26/02b	555	1,420	<500	9.49	<2.00	1.78	<1.50	--	11.90	0.00	8.20
	12/12/02	Obstructed by vehicle							--	NM	NM	--
	03/13/03	13,500	1,430	<500	749	153	791	2,160	--	9.87	0.00	10.23
	06/12/03	3,930	973	<562	338	21.2	49.9	222	--	11.91	0.00	8.19
	09/19/03	517	<373	<746	7.29	4.32	1.86	14.6	--	12.18	0.00	7.92
	01/14/04	614	142	<256	1.45	<0.5	0.657	0.568	0.3	11.33	0.00	8.77
	03/30/04	541	196	<257	<1	<1	<1	<2	1.46	11.69	0.00	8.41
	06/22/04	526	210	<238	1.27	<1	<1	<2	1.5	11.91	0.00	8.19
<b>MW-36</b>	03/31/99 <sup>2</sup>	<50.0	321	<750	0.759	<0.500	<0.500	<1.00	--	8.96	0.00	8.84
17.80	06/30/99 <sup>2</sup>	<50.0	<250	<750	1.29	<0.500	<0.500	<1.00	--	8.44	0.00	9.36
	12/08/99 <sup>2</sup>	<50.0	<250	<750	<0.500	<0.500	<0.500	<1.00	--	10.05	0.00	7.75
	06/20/00 <sup>2</sup>	172	<250	<750	<0.500	0.583	1.78	11.1	--	8.47	0.00	9.33
	12/19/00 <sup>2</sup>	106	<250	<750	0.529	1.51	1.08	7.14	--	9.50	0.00	8.30
	06/15/01 <sup>2</sup>	<50.0	298	<750	0.691	0.648	0.530	1.53	--	8.00	0.00	9.80
	06/26/01	--	--	--	--	--	--	--	--	NM	NM	--
	09/07/01 <sup>2</sup>	<50.0	<250	<500	0.897	<0.500	<0.500	<1.00	--	8.70	0.00	9.10
	10/10/01	--	--	--	--	--	--	--	--	NM	NM	--
	12/28/01	<50.0	387	<500	0.773	0.748	<0.500	1.78	--	9.57	0.00	8.23
	03/08/02	--	--	--	--	--	--	--	--	NM	NM	--
	06/24/02	--	--	--	--	--	--	--	--	NM	NM	--
	09/26/02	<100	<250	<500	0.735	<2.00	<1.00	<1.50	--	10.16	0.00	7.64
	12/12/02	--	--	--	--	--	--	--	--	NM	NM	--
	03/13/03	<50.0	<250	<500	0.830	<0.500	<0.500	<1.00	--	9.34	0.00	8.46
	06/12/03	--	--	--	--	--	--	--	--	NM	NM	--
	09/19/03	<50.0	<287	<575	1.44	0.561	<0.500	<1.00	--	10.23	0.00	7.57
	01/14/04	--	--	--	--	--	--	--	--	NM	NM	--
	03/30/04	<100	<133	<267	<1	<1	<1	<2	1.10	9.46	0.00	8.34
	06/22/04	--	--	--	--	--	--	--	--	NM	NM	--

**TABLE 1  
ANALYTICAL RESULTS AND GROUNDWATER ELEVATIONS**

ConocoPhillips Site No. 255353  
600 Westlake Avenue N.  
Seattle, Washington

Sample I.D. TOC	Sample Date	TPH-Gasoline (µg/l)	TPH-Diesel (µg/l)	TPH-Oil (µg/l)	Benzene (µg/l)	Toluene (µg/l)	Ethyl-benzene (µg/l)	Xylenes (µg/l)	DO (mg/l)	DTW (feet)	SPH (feet)	GWE (feet)
<b>MW-37</b>	03/31/99	LPH Present							--	NM	Trace	--
21.01	06/30/99	LPH Present							--	DRY	0.30	--
	12/08/99	--	--	--	--	--	--	--	--	11.11	--	9.90
	06/20/00	--	--	--	--	--	--	--	--	11.50	--	9.51
	12/19/00	LPH Present							--	11.50	0.50	9.91
	06/15/01 <sup>2</sup>	LPH Present							--	11.35	0.03	9.68
	06/26/01	--	--	--	--	--	--	--	--	NM	NM	--
	09/07/01 <sup>2</sup>	159,000	22,100	14,600	3,420	12,600	4,440	27,000	--	11.43	0.00	9.58
	10/10/01	--	--	--	--	--	--	--	--	NM	NM	--
	12/28/01 <sup>2</sup>	LPH Present							--	11.00	0.20	10.17
	03/08/02	LPH Present							--	11.61	0.40	9.72
	06/24/02	Inaccessible							--	NM	NM	--
	09/26/02	--	--	--	--	--	--	--	--	12.38	0.00	8.63
	12/12/02	--	--	--	--	--	--	--	--	12.35	0.00	8.66
	03/13/03	--	--	--	--	--	--	--	--	11.10	0.00	9.91
	06/12/03	1,450	474	<568	22.9	43.2	15.8	85.5	--	11.61	0.00	9.40
	09/19/03	141	<298	<595	<0.500	<0.500	<0.500	1.01	--	11.95	0.00	9.06
	01/14/04	471	<127	<255	4.56	<0.5	9.01	27.75	0.5	12.12	0.00	8.89
	03/30/04	572	180	<281	5.77	<1	<1	1.53	1.50	12.73	0.00	8.28
	06/22/04	737	487	294	3.26	3.66	1.46	14.25	1.0	12.29	0.00	8.72
<b>MW-38</b>	03/31/99	--	--	--	--	--	--	--	--	NM	NM	--
16.52	06/30/99	--	--	--	--	--	--	--	--	NM	NM	--
	12/08/99	--	--	--	--	--	--	--	--	NM	NM	--
	06/20/00	--	--	--	--	--	--	--	--	NM	NM	--
	12/19/00	--	--	--	--	--	--	--	--	NM	NM	--
	06/15/01	--	--	--	--	--	--	--	--	NM	NM	--
	06/26/01	--	--	--	--	--	--	--	--	NM	NM	--
	09/07/01	--	--	--	--	--	--	--	--	NM	NM	--
	10/10/01	--	--	--	--	--	--	--	--	NM	NM	--
	12/28/01	<50.0	403	<500	0.636	1.33	0.554	2.59	--	8.96	0.00	7.56
	03/08/02	--	--	--	--	--	--	--	--	NM	NM	--
	06/24/02	--	--	--	--	--	--	--	--	NM	NM	--
	09/26/02 <sup>3</sup>	<100	282	<500	0.743	<2.00	<1.00	<1.50	--	8.87	0.00	7.65
	12/12/02	--	--	--	--	--	--	--	--	NM	NM	--
	03/13/03	<50.0	<250	<500	<0.500	<0.500	<0.500	<1.00	--	7.84	0.00	8.68
	06/12/03	--	--	--	--	--	--	--	--	NM	NM	--
	09/19/03	<50.0	<250	<500	0.704	1.42	0.722	3.72	--	8.90	0.00	7.62
	01/14/04	--	--	--	--	--	--	--	--	NM	NM	--
	03/30/04	<100	<133	<266	<1	<1	<1	<2	0.90	8.09	0.00	8.43
	06/22/04	--	--	--	--	--	--	--	--	NM	NM	--



**TABLE 1  
ANALYTICAL RESULTS AND GROUNDWATER ELEVATIONS**

ConocoPhillips Site No. 255353  
600 Westlake Avenue N.  
Seattle, Washington

Sample I.D. TOC	Sample Date	TPH- Gasoline (µg/l)	TPH- Diesel (µg/l)	TPH- Oil (µg/l)	Benzene (µg/l)	Toluene (µg/l)	Ethyl- benzene (µg/l)	Xylenes (µg/l)	DO (mg/l)	DTW (feet)	SPH (feet)	GWE (feet)
<b>MW-40</b>	03/31/99	--	--	--	--	--	--	--	--	NM	NM	--
20.89	06/30/99	--	--	--	--	--	--	--	--	NM	NM	--
	12/08/99	--	--	--	--	--	--	--	--	NM	NM	--
	06/20/00	--	--	--	--	--	--	--	--	NM	NM	--
	12/09/00	--	--	--	--	--	--	--	--	NM	NM	--
	12/19/00	--	--	--	--	--	--	--	--	NM	NM	--
	06/15/01	--	--	--	--	--	--	--	--	NM	NM	--
	06/26/01	--	--	--	--	--	--	--	--	NM	NM	--
	09/07/01	--	--	--	--	--	--	--	--	NM	NM	--
	10/10/01	--	--	--	--	--	--	--	--	NM	NM	--
	12/28/01	449	4,000	5,090	2.12	2.19	1.38	3.88	--	10.75	0.00	10.14
	03/08/02	--	--	--	--	--	--	--	--	NM	NM	--
	06/24/02	--	--	--	--	--	--	--	--	NM	NM	--
	09/26/02	331	2,810	3,470	1.92	<2.00	<1.00	<1.50	--	12.69	0.00	8.20
	12/12/02	--	--	--	--	--	--	--	--	NM	NM	--
	03/13/03	509	2,010	2,010	<0.500	<0.500	0.630	1.77	--	11.30	0.00	9.59
	06/12/03	--	--	--	--	--	--	--	--	NM	NM	--
	09/19/03	259	393	1,120	2.64	3.01	1.39	6.77	--	12.46	0.00	8.43
	01/14/04	--	--	--	--	--	--	--	--	NM	NM	--
	03/30/04	627	863	3,360	3.69	<1	<1	<2	1.71	11.55	sheen	9.34
	06/22/04	--	--	--	--	--	--	--	--	NM	NM	--
<b>MW-42</b>	03/31/99	--	--	--	--	--	--	--	--	9.00	0.00	11.34
20.34	06/30/99	--	--	--	--	--	--	--	--	8.60	0.00	11.74
	12/08/99	--	--	--	--	--	--	--	--	8.00	0.00	12.34
	06/20/00	--	--	--	--	--	--	--	--	NM	NM	--
	12/19/00	--	--	--	--	--	--	--	--	NM	NM	--
	06/15/01	--	--	--	--	--	--	--	--	9.41	0.00	10.93
	06/26/01	--	--	--	--	--	--	--	--	NM	NM	--
	09/07/01	--	--	--	--	--	--	--	--	9.66	0.00	10.68
	10/10/01	--	--	--	--	--	--	--	--	NM	NM	--
	12/28/01	--	--	--	--	--	--	--	--	10.28	0.00	10.06
	03/08/02	--	--	--	--	--	--	--	--	9.75	0.00	10.59
	06/24/02	--	--	--	--	--	--	--	--	NM	NM	--
	09/26/02	--	--	--	--	--	--	--	--	10.81	0.00	9.53
	12/12/02	--	--	--	--	--	--	--	--	10.89	0.00	9.45
	03/13/03	--	--	--	--	--	--	--	--	9.77	0.00	10.57
	06/12/03	Monitoring Discontinued							--	NM	NM	--

**TABLE 1  
ANALYTICAL RESULTS AND GROUNDWATER ELEVATIONS**

ConocoPhillips Site No. 255353  
600 Westlake Avenue N.  
Seattle, Washington

Sample I.D. TOC	Sample Date	TPH-Gasoline (µg/l)	TPH-Diesel (µg/l)	TPH-Oil (µg/l)	Benzene (µg/l)	Toluene (µg/l)	Ethyl-benzene (µg/l)	Xylenes (µg/l)	DO (mg/l)	DTW (feet)	SPH (feet)	GWE (feet)
<b>MW-43</b>	03/31/99 <sup>2</sup>	<50.0	267	<750	9.84	<0.500	0.782	2.47	--	10.97	0.00	10.07
21.04	06/30/99 <sup>2</sup>	146	253	<750	28.2	7.47	2.95	17.5	--	9.97	0.00	11.07
	12/08/99 <sup>2</sup>	<50.0	<250	<750	20.5	<0.500	<0.500	<1.00	--	11.06	0.00	9.98
	06/20/00 <sup>2</sup>	<50.0	<250	<750	3.79	<0.500	<0.500	<1.00	--	11.40	0.00	9.64
	12/19/00 <sup>2</sup>	55.9	253	<749	2.97	0.948	0.730	4.78	--	11.40	0.00	9.64
	06/15/01 <sup>2</sup>	<50.0	405	<750	0.670	<0.500	<0.500	1.22	--	11.32	0.00	9.72
	06/26/01	--	--	--	--	--	--	--	--	NM	NM	--
	09/07/01 <sup>2</sup>	<50.0	<293	<587	<0.500	<0.500	<0.500	<1.00	--	11.46	0.00	9.58
	10/10/01	--	--	--	--	--	--	--	--	NM	NM	--
	12/28/01	52	487	<500	5.61	1.18	0.558	3.34	--	11.17	0.00	9.87
	03/08/02	--	--	--	--	--	--	--	--	NM	NM	--
	06/24/02	--	--	--	--	--	--	--	--	NM	NM	--
	09/26/02 <sup>3</sup>	<100	303.00	<500	0.669	<2.00	<1.00	<1.50	--	12.28	0.00	8.76
	12/12/02	--	--	--	--	--	--	--	--	NM	NM	--
	03/13/03	<50.0	<321	<641	0.883	<0.500	<0.500	<1.00	--	11.20	0.00	9.84
	06/12/03	--	--	--	--	--	--	--	--	NM	NM	--
	09/19/03	<50.0	<291	<581	1.76	<0.500	<0.500	<1.00	--	12.37	0.00	8.67
	01/14/04	--	--	--	--	--	--	--	--	NM	NM	--
	03/30/04	<100	<129	<258	<1	<1	<1	<2	1.76	11.95	0.00	9.09
	06/22/04	--	--	--	--	--	--	--	--	NM	NM	--
<b>MW-44</b>	03/31/99 <sup>2</sup>	<50.0	<250	<750	<0.500	<0.500	<0.500	<1.00	--	8.18	0.00	10.55
18.73	06/30/99 <sup>2</sup>	<50.0	393	<750	<0.500	0.619	<0.500	1.21	--	8.03	0.00	10.70
	12/08/99 <sup>2</sup>	<50.0	281	<750	<0.500	<0.500	<0.500	<1.00	--	8.52	0.00	10.21
	06/20/00 <sup>2</sup>	<50.0	<250	<750	<0.500	<0.500	<0.500	<1.00	--	9.53	0.00	9.20
	12/19/00 <sup>2</sup>	301	330	<750	<0.500	1.64	2.76	22.1	--	9.20	0.00	9.53
	06/15/01 <sup>2</sup>	<50.0	468	<841	<0.500	<0.500	<0.500	<1.00	--	8.44	0.00	10.29
	06/26/01	--	--	--	--	--	--	--	--	NM	NM	--
	09/07/01 <sup>2</sup>	10,300	4,250	849	1,050	6.97	945	51.0	--	9.48	0.00	9.25
	10/10/01	--	--	--	--	--	--	--	--	NM	NM	--
	12/28/01	90.6	823	<500	10.9	1.40	0.644	4.04	--	9.31	0.00	9.42
	03/08/02	--	--	--	--	--	--	--	--	NM	NM	--
	06/24/02	--	--	--	--	--	--	--	--	NM	NM	--
	09/26/02 <sup>3</sup>	<100	1,600	569	14.2	<2.00	<1.00	<1.50	--	10.79	0.00	7.94
	12/12/02	--	--	--	--	--	--	--	--	NM	NM	--
	03/13/03	196	347	<575	26.8	<0.500	<0.500	<1.00	--	11.58	0.00	7.15
	06/12/03	--	--	--	--	--	--	--	--	NM	NM	--
	09/19/03	156	<301	<602	20.2	0.997	<0.500	2.61	--	10.97	0.00	7.76
	01/14/04	--	--	--	--	--	--	--	--	NM	NM	--
	03/30/04	<100	<134	<268	<1	<1	<1	<2	1.90	10.01	0.00	8.72
	06/22/04	--	--	--	--	--	--	--	--	NM	NM	--

**TABLE 1  
ANALYTICAL RESULTS AND GROUNDWATER ELEVATIONS**

ConocoPhillips Site No. 255353  
600 Westlake Avenue N.  
Seattle, Washington

Sample I.D. TOC	Sample Date	TPH- Gasoline (µg/l)	TPH- Diesel (µg/l)	TPH- Oil (µg/l)	Benzene (µg/l)	Toluene (µg/l)	Ethyl- benzene (µg/l)	Xylenes (µg/l)	DO (mg/l)	DTW (feet)	SPH (feet)	GWE (feet)
<b>MW-45</b>	09/07/01 <sup>2</sup>	<50.0	375	<606	<0.500	<0.500	<0.500	<1.00	--	9.80	0.00	--
-- <sup>1</sup>	10/10/01	--	--	--	--	--	--	--	--	NM	NM	--
	12/28/01	17,300	2,210	597	2,130	73.4	1,330	2,970	--	9.03	0.00	--
	03/08/02	15,500	2,380	686	2,090	38.4	1,190	1,650	--	9.12	0.00	--
	06/24/02	5,100	1,920	761	1,330	6.39	451	235	--	9.00	0.00	--
	09/26/02 <sup>3</sup>	2,420	1,190	547	394	3.41	204	106	--	10.20	0.00	--
	12/12/02	Obstructed by vehicle							--	NM	NM	--
	03/13/03	3,590	2,050	<500	219	133	99.4	368	--	8.05	0.00	--
	06/12/03	10,700	1,470	<575	1,350	10.8	954	631	--	9.16	0.00	--
	09/19/03	583	<298	<595	1.93	2.25	5.65	38.6	--	10.68	0.00	--
	01/14/04	360	<118	<236	4.97	<0.5	2.48	1.01	0.4	10.12	0.00	--
	03/30/04	303	234	<240	<1	<1	<1	<2	0.84	10.19	0.00	--
	06/22/04	151	365	358	<1	<1	<1	<2	0.7	10.34	0.00	--
<b>MW-46</b>	03/31/99	--	--	--	--	--	--	--	--	NM	NM	--
16.91	06/30/99	--	--	--	--	--	--	--	--	NM	NM	--
	12/08/99	--	--	--	--	--	--	--	--	NM	NM	--
	06/20/00	--	--	--	--	--	--	--	--	NM	NM	--
	12/19/00	226	277	<750	<0.500	2.18	2.53	18.0	--	12.70	0.00	4.21
	06/15/01 <sup>2</sup>	<50.0	295	<750	<0.500	<0.500	<0.500	1.39	--	7.19	0.00	9.72
	06/26/01	--	--	--	--	--	--	--	--	NM	NM	--
	09/07/01	--	--	--	--	--	--	--	--	NM	NM	--
	10/10/01	--	--	--	--	--	--	--	--	NM	NM	--
	12/28/01	Covered by asphalt							--	NM	NM	--
	03/08/02	--	--	--	--	--	--	--	--	NM	NM	--
	06/24/02	--	--	--	--	--	--	--	--	NM	NM	--
	09/26/02	Unable to locate							--	NM	NM	--
	12/12/02	--	--	--	--	--	--	--	--	NM	NM	--
	03/13/03	Covered by asphalt							--	NM	NM	--
	06/12/03	--	--	--	--	--	--	--	--	NM	NM	--
	09/19/03	Covered by asphalt							--	NM	NM	--
	01/14/04	Monitoring Discontinued							--	NM	NM	--

**TABLE 1  
ANALYTICAL RESULTS AND GROUNDWATER ELEVATIONS**

ConocoPhillips Site No. 255353  
600 Westlake Avenue N.  
Seattle, Washington

Sample I.D. TOC	Sample Date	TPH- Gasoline (µg/l)	TPH- Diesel (µg/l)	TPH- Oil (µg/l)	Benzene (µg/l)	Toluene (µg/l)	Ethyl- benzene (µg/l)	Xylenes (µg/l)	DO (mg/l)	DTW (feet)	SPH (feet)	GWE (feet)
<b>MW-47</b>	03/31/99	--	--	--	--	--	--	--	--	9.65	0.00	10.18
19.83	06/30/99	--	--	--	--	--	--	--	--	NM	NM	--
	12/08/99	--	--	--	--	--	--	--	--	NM	NM	--
	06/20/00 <sup>2</sup>	<50.0	<250	<750	<1.30	<0.500	<0.500	<1.00	--	10.94	0.00	8.89
	12/19/00 <sup>2</sup>	1,310	357	<750	<0.500	6.10	10.6	77.3	--	11.20	0.00	8.63
	06/15/01	<50.0	591	<952	0.709	0.504	<0.500	1.18	--	10.98	0.00	8.85
	06/26/01	--	--	--	--	--	--	--	--	NM	NM	--
	09/07/01 <sup>2</sup>	<50.0	356	<500	<0.500	<0.500	<0.500	<1.00	--	11.14	0.00	8.69
	10/10/01	--	--	--	--	--	--	--	--	NM	NM	--
	12/28/01	181	542	<500	7.64	1.49	4.79	37.8	--	10.90	0.00	8.93
	03/08/02	--	--	--	--	--	--	--	--	NM	NM	--
	06/24/02	--	--	--	--	--	--	--	--	NM	NM	--
	09/26/02 <sup>3</sup>	106	747	<500	2.36	<2.00	<1.00	<1.50	--	11.85	0.00	7.98
	12/12/02	--	--	--	--	--	--	--	--	NM	NM	--
	03/13/03	75.5	<284	<568	<0.500	<0.500	<0.500	<1.00	--	10.91	0.00	8.92
	06/12/03	--	--	--	--	--	--	--	--	NM	NM	--
	09/19/03	76.8	<294	<588	3.41	<0.500	<0.500	1.14	--	12.05	0.00	7.78
	01/14/04	--	--	--	--	--	--	--	--	NM	NM	--
	03/30/04	272	262	980	<1	<1	<1	<2	1.21	11.81	0.00	8.02
	06/22/04	--	--	--	--	--	--	--	--	NM	NM	--
<b>MW-50</b>	10/10/01	8,970	2,200	<606	674	221	382	779	--	11.11	0.00	--
-- <sup>1</sup>	12/28/01	23,200	3,460	<500	1,630	3,690	991	4,480	--	10.45	0.00	--
	03/08/02	Obstructed by vehicle							--	NM	NM	--
	06/24/02	8,290	1,970	556	414	23	314	2,010	--	10.84	0.00	--
	09/26/02	Obstructed by vehicle							--	NM	NM	--
	12/12/02	Obstructed by vehicle							--	NM	NM	--
	03/13/03	12,200	1,810	<588	733	127	523	1,100	--	9.93	0.00	--
	06/12/03	6,450	1,740	<500	448	13.7	299	286	--	11.27	0.00	--
	09/19/03	4,440	<250	<500	51.7	315	26.1	462	--	12.05	0.00	--
	01/14/04	29,700	1,970	<258	308	502	312	6,180	4.1	11.81	0.00	--
	03/30/04	3,330	867	<241	21.8	<5	21.9	226.4	1.69	11.65	0.00	--
	06/22/04	2,130	874	<237	14.2	2.4	27.9	85.11	1.1	11.79	0.00	--

**TABLE 1  
ANALYTICAL RESULTS AND GROUNDWATER ELEVATIONS**

ConocoPhillips Site No. 255353  
600 Westlake Avenue N.  
Seattle, Washington

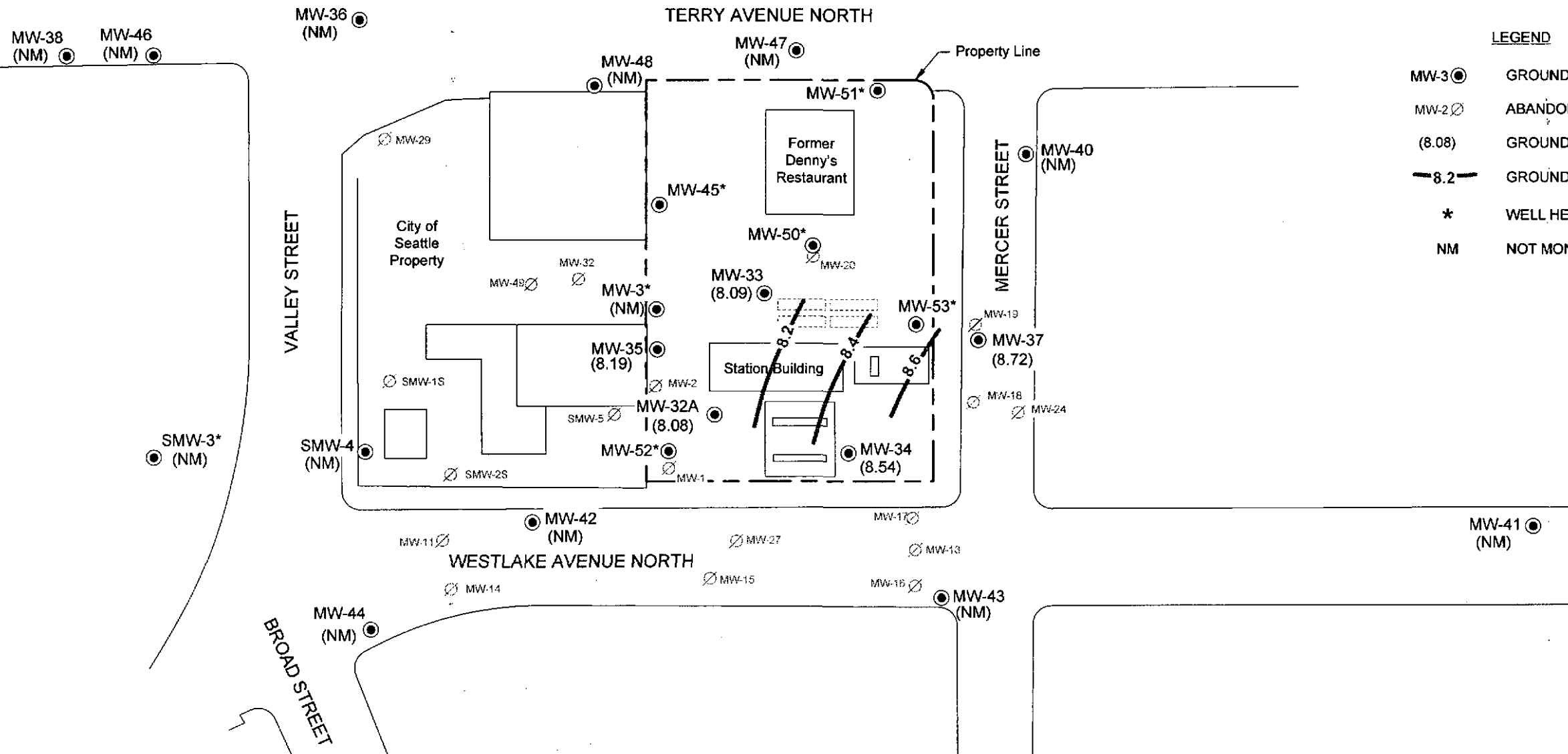
Sample I.D. TOC	Sample Date	TPH- Gasoline (µg/l)	TPH- Diesel (µg/l)	TPH- Oil (µg/l)	Benzene (µg/l)	Toluene (µg/l)	Ethyl- benzene (µg/l)	Xylenes (µg/l)	DO (mg/l)	DTW (feet)	SPH (feet)	GWE (feet)
<b>MW-51</b>	10/10/01	671	11,700	2,150	10.1	10.4	7.75	16.6	--	11.68	0.00	--
-- <sup>1</sup>	12/28/01	631	2,170	3,100	37.0	75.6	30.4	81.2	--	11.20	0.00	--
	03/08/02	102	2,350	1,610	6.22	5.89	3.84	10.4	--	11.38	0.00	--
	06/24/02	57.7	2,650	1,730	1.28	1.42	0.699	2.51	--	11.60	0.00	--
	09/26/02 <sup>3</sup>	<100	1,660	875	0.848	<2.00	<1.00	<1.50	--	12.18	0.00	--
	12/12/02	<50.0	2,050	781	<0.500	<0.500	<0.500	<1.00	--	12.28	0.00	--
	03/13/03	<50.0	693	<625	<0.500	<0.500	<0.500	<1.00	--	11.05	0.00	--
	06/12/03	--	--	--	--	--	--	--	--	NM	NM	--
	09/19/03	52.4	<250	<500	1.47	1.81	0.544	3.59	--	12.42	0.00	--
	01/14/04	73.5	<139	<278	<0.25	0.804	<0.5	<1	0.4	11.79	0.00	--
	03/30/04	<100	404	401	<1	<1	<1	<2	1.56	12.22	0.00	--
	06/22/04	104	129	<237	<1	<1	<1	<2	1.2	12.10	0.00	--
<b>MW-52</b>	10/10/01	13,400	1,460	<582	1,150	<10.0	827	793	--	10.79	0.00	--
-- <sup>1</sup>	12/28/01	7,900	1,690	595	634	5.87	509	479	--	10.22	0.00	--
	03/08/02	10,100	2,790	<602	814	6.30	602	387	--	10.42	0.00	--
	06/24/02	9,820	2,810	640	1,250	<25.0	757	448	--	10.58	0.00	--
	09/26/02 <sup>3</sup>	6,600	3,530	<500	943	21.7	600	284	--	11.51	0.00	--
	12/12/02	1,170	7,350	638	120	0.822	73.9	7.30	--	11.61	0.00	--
	03/13/03	4,540	1,530	<568	272	52.7	236	210	--	9.59	0.00	--
	06/12/03	--	--	--	--	--	--	--	--	NM	NM	--
	09/19/03	Obstructed by vehicle							--	NM	NM	--
	01/14/04	905	<126	<252	16.6	0.532	39.6	2.45	0.3	11.00	0.00	--
	03/30/04	738	462	<253	16.8	<1	18.4	24.66	1.31	11.47	0.00	--
	06/22/04	1,600	593	<248	161	<10	70.1	<20	1.5	11.50	0.00	--

**TABLE 1  
ANALYTICAL RESULTS AND GROUNDWATER ELEVATIONS**

ConocoPhillips Site No. 255353  
600 Westlake Avenue N.  
Seattle, Washington

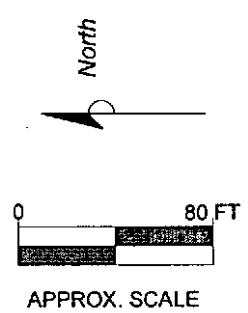
Sample I.D. TOC	Sample Date	TPH- Gasoline (µg/l)	TPH- Diesel (µg/l)	TPH- Oil (µg/l)	Benzene (µg/l)	Toluene (µg/l)	Ethyl- benzene (µg/l)	Xylenes (µg/l)	DO (mg/l)	DTW (feet)	SPH (feet)	GWE (feet)
<b>MW-53</b>	03/13/03	14,000	1,030	<625	398	143	501	1,170	--	11.17	0.00	--
<sup>1</sup>	06/12/03	9,700	1,370	<500	553	197	431	1,270	--	12.05	0.00	--
	09/19/03	1,470	<250	<500	29.3	6.61	28.5	111	--	12.85	0.00	--
	01/14/04	2,770	181	<264	173	3.79	91.7	127.1	0.4	11.70	0.00	--
	03/30/04	3,580	686	<237	257	49.7	125	204.8	1.28	12.26	0.00	--
	06/22/04	4,820	750	<240	363	85.2	188	425	1.1	12.23	0.00	--

**Notes:**  
µg/l = micrograms per liter  
TOC = Top of casing elevation, provided by previous consultants  
DTW = Depth to water  
SPH = Separate-phase hydrocarbon thickness  
GWE = Groundwater table elevation relative to DTW data; corrected for SPH where applicable using a specific gravity of 0.80  
<n = Below the detection limit  
"--" = Not analyzed, sampled, or reported  
NM = Not Measured  
TPH as Gasoline - Analysis by Northwest Method NWTPH-Gx  
TPH as Diesel and Oil - Analysis by Northwest Method NWTPH-Dx  
BTEX Compounds - Analysis by EPA Method 8020A, 8021B or 8260B  
<sup>1</sup> Top of casing elevations for SM-W3, MW-3, MW-45, and MW-50 through MW-53 have not been established.  
<sup>2</sup> Well was not purged prior to sample collection.  
<sup>3</sup> TPH-D & TPH-O did not resemble chromatogram used for quantitation.  
<sup>4</sup> MTCA Method A Cleanup Level for TPH-Gasoline is 1,000 µg/l if benzene is not detectable in groundwater.



**LEGEND**

- MW-3 ● GROUNDWATER MONITORING WELL
- MW-2 ∅ ABANDONED OR DESTROYED GROUNDWATER MONITORING WELL
- (8.08) GROUNDWATER ELEVATION, JUNE 22, 2004
- 8.2 — GROUNDWATER ELEVATION CONTOUR, JUNE 22, 2004
- \* WELL HEAD HAS NOT BEEN SURVEYED
- NM NOT MONITORED / NOT MEASURED



**FIGURE 1**  
**SITE MAP WITH GROUNDWATER ELEVATION CONTOURS**

CONOCOPHILLIPS SITE NO. 255353  
 600 WESTLAKE AVENUE NORTH  
 SEATTLE, WASHINGTON

PROJECT NO. WA25-535-1 FILE NO. WA25-535-1 REVISION NO. 0	DRAWN BY TS 7/12/04 PREPARED BY TS 7/12/04 REVIEWED BY EL
--	--

**Delta**  
Environmental  
Consultants, Inc.

BASED ON MAPS PROVIDED BY GEOENGINEERS, INC. AND ENVIRONMENTAL RESOLUTIONS, INC.

MW-38	G	D	O	B	T	E	X
06/12/03	--	--	--	--	--	--	--
09/19/03	<50.0	<250	<500	0.704	1.42	0.722	3.72
01/14/04	--	--	--	--	--	--	--
03/30/04	<100	<133	<266	<1	<1	<1	<2
06/22/04	--	--	--	--	--	--	--

MW-36	G	D	O	B	T	E	X
06/12/03	--	--	--	--	--	--	--
09/19/03	<50.0	<287	<575	1.44	0.561	<0.500	<1.00
01/14/04	--	--	--	--	--	--	--
03/30/04	<100	<133	<267	<1	<1	<1	<2
06/22/04	--	--	--	--	--	--	--

MW-45	G	D	O	B	T	E	X
06/12/03	10,700	1,470	<575	1,350	10.8	954	631
09/19/03	583	<298	<595	1.93	2.25	5.65	38.6
01/14/04	360	<118	<236	4.97	<0.5	2.48	1.01
03/30/04	303	234	<240	<1	<1	<1	<2
06/22/04	151	365	358	<1	<1	<1	<1

MW-47	G	D	O	B	T	E	X
06/12/03	--	--	--	--	--	--	--
09/19/03	76.8	<294	<588	3.41	<0.500	<0.500	1.14
01/14/04	--	--	--	--	--	--	--
03/30/04	272	262	980	<1	<1	<1	<2
06/22/04	--	--	--	--	--	--	--

MW-51	G	D	O	B	T	E	X
06/12/03	--	--	--	--	--	--	--
09/19/03	52.4	<250	<500	1.47	1.81	0.544	3.59
01/14/04	73.5	<139	<278	<0.25	0.804	<0.5	<1
03/30/04	<100	404	401	<1	<1	<1	<2
06/22/04	104	129	<237	<1	<1	<1	<1

MW-50	G	D	O	B	T	E	X
06/12/03	6,450	1,740	<500	448	13.7	299	286
09/19/03	4,440	<250	<500	51.7	315	26.1	462
01/14/04	29,700	1,970	<258	308	502	312	6,180
03/30/04	3,330	867	<241	21.8	<5	21.9	226.4
06/22/04	2,130	874	<237	14.2	2.4	27.9	85.11

MW-40	G	D	O	B	T	E	X
06/12/03	--	--	--	--	--	--	--
09/19/03	259	393	1,120	2.64	3.01	1.39	6.77
01/14/04	--	--	--	--	--	--	--
03/30/04	627	863	3,360	3.69	<1	<1	<2
06/22/04	--	--	--	--	--	--	--

MW-33	G	D	O	B	T	E	X
06/12/03	30,900	4,170	<562	396	526	474	3,890
09/19/03	125	<291	<581	0.704	<0.500	<0.500	1.30
01/14/04	524	<135	<271	17	3.7	7.65	31
03/30/04	2,680	725	<256	218	14.7	53.2	150.4
06/22/04	3,500	1,330	443	197	12.1	99.2	217.3

MW-53	G	D	O	B	T	E	X
06/12/03	9,700	1,370	<500	553	197	431	1,270
09/19/03	1,470	<250	<500	29.3	6.61	28.5	111
01/14/04	2,770	181	<264	173	3.79	91.7	127.1
03/30/04	3,580	696	<237	257	49.7	125	204.8
06/22/04	4,820	750	<240	363	85.2	188	425

MW-37	G	D	O	B	T	E	X
06/12/03	1,450	474	<568	22.9	43.2	15.8	85.5
09/19/03	141	<298	<595	<0.500	<0.500	<0.500	1.01
01/14/04	471	<127	<255	4.56	<0.5	9.01	27.75
03/30/04	572	180	<281	5.77	<1	<1	1.53
06/22/04	737	487	294	3.26	3.66	1.46	14.25

MW-34	G	D	O	B	T	E	X
06/12/03	13,000	2,880	<500	1,590	735	450	1,360
09/19/03	351	<301	<602	9.91	11.7	6.48	34.6
01/14/04	160	<122	<245	23.7	<0.5	2.11	<1
03/30/04	15,100	1,120	<300	3,060	238	564	846.6
06/22/04	6,760	1,900	<238	2,320	14.3	395	279.8

MW-52	G	D	O	B	T	E	X
06/12/03	--	--	--	--	--	--	--
09/19/03	Obstructed by vehicle						
01/14/04	905	<126	<252	16.6	0.532	39.6	2.45
03/30/04	738	462	<253	16.8	<1	18.4	24.66
06/22/04	1,600	593	<248	161	<10	70.1	<20

MW-43	G	D	O	B	T	E	X
06/12/03	--	--	--	--	--	--	--
09/19/03	<50.0	<291	<561	1.76	<0.500	<0.500	<1.00
01/14/04	--	--	--	--	--	--	--
03/30/04	<100	<129	<258	<1	<1	<1	<2
06/22/04	--	--	--	--	--	--	--


SMW-3	G	D	O	B	T	E	X
06/12/03	--	--	--	--	--	--	--
09/19/03	<50.0	<287	<575	<0.500	<0.500	<0.500	<1.00
01/14/04	--	--	--	--	--	--	--
03/30/04	<100	<119	<238	<1	<1	<1	<2
06/22/04	--	--	--	--	--	--	--

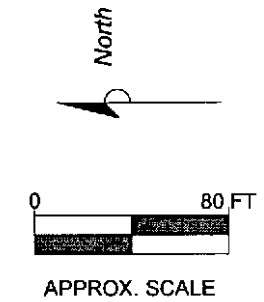
MW-44	G	D	O	B	T	E	X
06/12/03	--	--	--	--	--	--	--
09/19/03	156	<301	<602	20.2	0.997	<0.500	2.61
01/14/04	--	--	--	--	--	--	--
03/30/04	<100	<134	<268	<1	<1	<1	<2
06/22/04	--	--	--	--	--	--	--

LEGEND

- MW-3 ● GROUNDWATER MONITORING WELL
- MW-2 ∅ ABANDONED OR DESTROYED GROUNDWATER MONITORING WELL
- (NM) NOT MONITORED
- G GASOLINE RANGE HYDROCARBONS (µg/l)
- D DIESEL RANGE HYDROCARBONS (µg/l)
- O OIL RANGE HYDROCARBONS (µg/l)
- B BENZENE (µg/l)
- T TOLUENE (µg/l)
- E ETHYLBENZENE (µg/l)
- X XYLENES (µg/l)
- <80.0 ANALYTE NOT DETECTED AT OR ABOVE THE LABORATORY REPORTING LIMIT OF 80.0 µg/l
- NOT MEASURED OR ANALYZED

**FIGURE 2**  
GROUNDWATER PETROLEUM HYDROCARBON AND BTEX CONCENTRATIONS  
CONOCOPHILLIPS SITE NO. 255353  
600 WESTLAKE AVENUE NORTH  
SEATTLE, WASHINGTON

PROJECT NO. WA25-535-1	DRAWN BY TS 7/12/04	
FILE NO. WA25-535-1	PREPARED BY TS 7/12/04	
REVISION NO. 0	REVIEWED BY EL	



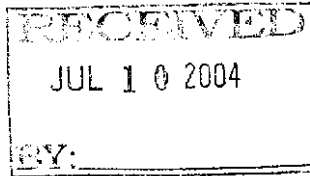


**LABORATORY ANALYTICAL REPORT AND CHAIN-OF-CUSTODY  
DOCUMENTATION**

Quarterly Groundwater Sampling  
ConocoPhillips Site No. 255353



# STL



**STL Seattle**  
5755 8<sup>th</sup> Street East  
Tacoma, WA 98424

Tel: 253 922 2310  
Fax: 253 922 5047  
[www.stl-inc.com](http://www.stl-inc.com)

## TRANSMITTAL MEMORANDUM

DATE: July 8, 2004

TO: Eric Larsen  
Delta Environmental  
17720 NE 65th Street Ste 201  
Redmond, WA 98052

PROJECT: COP Westlake / 255353 Seattle

REPORT NUMBER: 121879

TOTAL NUMBER OF PAGES: 28

Enclosed are the test results for ten samples received at STL Seattle on June 24, 2004.

The report consists of this transmittal memo, analytical results, quality control reports, a copy of the chain-of-custody, a list of data qualifiers and analytical narrative when applicable, and a copy of any requested raw data.

Should there be any questions regarding this report, please contact me at (253) 922-2310.

Sincerely,

Tom Coyner  
Project Manager

---

STL Seattle is a part of Severn Trent Laboratories, Inc.

*This report is issued solely for the use of the person or company to whom it is addressed. Any use, copying or disclosure other than by the intended recipient is unauthorized. If you have received this report in error, please notify the sender immediately at 253-922-2310 and destroy this report immediately.*

# STL Seattle

## Sample Identification:

<u>Lab. No.</u>	<u>Client ID</u>	<u>Date/Time Sampled</u>	<u>Matrix</u>
121879-1	MW-32A	06-22-04 12:10	Liquid
121879-2	MW-33	06-22-04 10:10	Liquid
121879-3	MW-34	06-22-04 12:20	Liquid
121879-4	MW-35	06-22-04 10:20	Liquid
121879-5	MW-37	06-22-04 10:40	Liquid
121879-6	MW-45	06-22-04 10:25	Liquid
121879-7	MW-50	06-22-04 10:00	Liquid
121879-8	MW-51	06-22-04 10:15	Liquid
121879-9	MW-52	06-22-04 12:05	Liquid
121879-10	MW-53	06-22-04 12:35	Liquid

---

STL Seattle is a part of Severn Trent Laboratories, Inc.

*This report is issued solely for the use of the person or company to whom it is addressed. Any use, copying or disclosure other than by the intended recipient is unauthorized. If you have received this report in error, please notify the sender immediately at 253-922-2310 and destroy this report immediately.*

00002

# STL Seattle

Client Name	Delta Environmental
Client ID:	MW-32A
Lab ID:	121879-01
Date Received:	6/24/04
Date Prepared:	7/1/04
Date Analyzed:	7/1/04
% Solids	-
Dilution Factor	10

## GRO by NWTPH-Gx / Volatile Aromatics by 5030/8021B

Surrogate	% Recovery	Flags	Recovery Limits	
			Low	High
Trifluorotoluene	73		50	150
1-Chloro-3-fluorobenzene	90.3		80	120
Bromofluorobenzene	88.5		80	120
Pentafluorobenzene	108		81	126

Analyte	Result (mg/L)	RL	Flags
Gasoline By NWTPH-G	3.33	1	
Benzene	0.149	0.01	
Toluene	ND	0.01	
Ethylbenzene	0.0725	0.01	
m&p-Xylene	0.0438	0.02	
o-Xylene	ND	0.01	

# STL Seattle

Client Name	Delta Environmental
Client ID:	MW-33
Lab ID:	121879-02
Date Received:	6/24/04
Date Prepared:	7/1/04
Date Analyzed:	7/1/04
% Solids	-
Dilution Factor	10

## GRO by NWTPH-Gx / Volatile Aromatics by 5030/8021B

Surrogate	% Recovery	Flags	Recovery Limits	
			Low	High
Trifluorotoluene	78.1		50	150
1-Chloro-3-fluorobenzene	101		80	120
Bromofluorobenzene	97.8		80	120
Pentafluorobenzene	111		81	126

Analyte	Result (mg/L)	RL	Flags
Gasoline By NWTPH-G	3.5	1	
Benzene	0.197	0.01	
Toluene	0.0121	0.01	
Ethylbenzene	0.0992	0.01	
m&p-Xylene	0.16	0.02	
o-Xylene	0.0573	0.01	

# STL Seattle

Client Name	Delta Environmental
Client ID:	MW-34
Lab ID:	121879-03
Date Received:	6/24/04
Date Prepared:	7/1/04
Date Analyzed:	7/1/04
% Solids	-
Dilution Factor	10

## GRO by NWTPH-Gx / Volatile Aromatics by 5030/8021B

Surrogate	% Recovery	Flags	Recovery Limits	
			Low	High
Trifluorotoluene	69.7		50	150
1-Chloro-3-fluorobenzene	77.6	X9	80	120
Bromofluorobenzene	76.4	X9	80	120
Pentafluorobenzene	109		81	126

Analyte	Result (mg/L)	RL	Flags
Gasoline By NWTPH-G	6.76	1	
Benzene	2.32	0.01	
Toluene	0.0143	0.01	
Ethylbenzene	0.395	0.01	
m&p-Xylene	0.268	0.02	
o-Xylene	0.0118	0.01	

# STL Seattle

Client Name	Delta Environmental
Client ID:	MW-35
Lab ID:	121879-04
Date Received:	6/24/04
Date Prepared:	7/1/04
Date Analyzed:	7/1/04
% Solids	-
Dilution Factor	1

## GRO by NWTPH-Gx / Volatile Aromatics by 5030/8021B

Surrogate	% Recovery	Flags	Recovery Limits	
			Low	High
Trifluorotoluene	62.9		50	150
1-Chloro-3-fluorobenzene	80.5		80	120
Bromofluorobenzene	78.8	X9	80	120
Pentafluorobenzene	89.6		81	126

Analyte	Result (mg/L)	RL	Flags
Gasoline By NWTPH-G	0.526	0.1	
Benzene	0.00127	0.001	
Toluene	ND	0.001	
Ethylbenzene	ND	0.001	
m&p-Xylene	ND	0.002	
o-Xylene	ND	0.001	

# STL Seattle

Client Name	Delta Environmental
Client ID:	MW-37
Lab ID:	121879-05
Date Received:	6/24/04
Date Prepared:	7/1/04
Date Analyzed:	7/1/04
% Solids	-
Dilution Factor	1

## GRO by NWTPH-Gx / Volatile Aromatics by 5030/8021B

Surrogate	% Recovery	Flags	Recovery Limits	
			Low	High
Trifluorotoluene	71.9		50	150
1-Chloro-3-fluorobenzene	90.2		80	120
Bromofluorobenzene	89.4		80	120
Pentafluorobenzene	104		81	126

Analyte	Result (mg/L)	RL	Flags
Gasoline By NWTPH-G	0.737	0.1	
Benzene	0.00326	0.001	
Toluene	0.00366	0.001	
Ethylbenzene	0.00146	0.001	
m&p-Xylene	0.0105	0.002	
o-Xylene	0.00375	0.001	



# STL Seattle

Client Name	Delta Environmental
Client ID:	MW-45
Lab ID:	121879-06
Date Received:	6/24/04
Date Prepared:	7/1/04
Date Analyzed:	7/1/04
% Solids	-
Dilution Factor	1

## GRO by NWTPH-Gx / Volatile Aromatics by 5030/8021B

Surrogate	% Recovery	Flags	Recovery Limits	
			Low	High
Trifluorotoluene	83.5		50	150
1-Chloro-3-fluorobenzene	113		80	120
Bromofluorobenzene	109		80	120
Pentafluorobenzene	118		81	126

Analyte	Result (mg/L)	RL	Flags
Gasoline By NWTPH-G	0.151	0.1	
Benzene	ND	0.001	
Toluene	ND	0.001	
Ethylbenzene	ND	0.001	
m&p-Xylene	ND	0.002	
o-Xylene	ND	0.001	

# STL Seattle

Client Name	Delta Environmental
Client ID:	MW-50
Lab ID:	121879-07
Date Received:	6/24/04
Date Prepared:	7/1/04
Date Analyzed:	7/1/04
% Solids	-
Dilution Factor	1

## GRO by NWTPH-Gx / Volatile Aromatics by 5030/8021B

Surrogate	% Recovery	Flags	Recovery Limits	
			Low	High
Trifluorotoluene	91.3		50	150
1-Chloro-3-fluorobenzene	110		80	120
Bromofluorobenzene	108		80	120
Pentafluorobenzene	176	X9	81	126

Analyte	Result (mg/L)	RL	Flags
Gasoline By NWTPH-G	2.13	0.1	
Benzene	0.0142	0.001	
Toluene	0.0024	0.001	
Ethylbenzene	0.0279	0.001	
m&p-Xylene	0.0781	0.002	
o-Xylene	0.00701	0.001	

# STL Seattle

Client Name	Delta Environmental
Client ID:	MW-51
Lab ID:	121879-08
Date Received:	6/24/04
Date Prepared:	7/1/04
Date Analyzed:	7/1/04
% Solids	-
Dilution Factor	1

## GRO by NWTPH-Gx / Volatile Aromatics by 5030/8021B

Surrogate	% Recovery	Flags	Recovery Limits	
			Low	High
Trifluorotoluene	77.7		50	150
1-Chloro-3-fluorobenzene	105		80	120
Bromofluorobenzene	101		80	120
Pentafluorobenzene	109		81	126

Analyte	Result (mg/L)	RL	Flags
Gasoline By NWTPH-G	0.104	0.1	
Benzene	ND	0.001	
Toluene	ND	0.001	
Ethylbenzene	ND	0.001	
m&p-Xylene	ND	0.002	
o-Xylene	ND	0.001	

# STL Seattle

Client Name	Delta Environmental
Client ID:	MW-52
Lab ID:	121879-09
Date Received:	6/24/04
Date Prepared:	7/1/04
Date Analyzed:	7/1/04
% Solids	-
Dilution Factor	10

## GRO by NWTPH-Gx / Volatile Aromatics by 5030/8021B

Surrogate	% Recovery	Flags	Recovery Limits	
			Low	High
Trifluorotoluene	85.8		50	150
1-Chloro-3-fluorobenzene	111		80	120
Bromofluorobenzene	107		80	120
Pentafluorobenzene	117		81	126

Analyte	Result (mg/L)	RL	Flags
Gasoline By NWTPH-G	1.6	1	
Benzene	0.161	0.01	
Toluene	ND	0.01	
Ethylbenzene	0.0701	0.01	
m&p-Xylene	ND	0.02	
o-Xylene	ND	0.01	

# STL Seattle

Client Name	Delta Environmental
Client ID:	MW-53
Lab ID:	121879-10
Date Received:	6/24/04
Date Prepared:	7/1/04
Date Analyzed:	7/1/04
% Solids	-
Dilution Factor	10

## GRO by NWTPH-Gx / Volatile Aromatics by 5030/8021B

Surrogate	% Recovery	Flags	Recovery Limits	
			Low	High
Trifluorotoluene	83.8		50	150
1-Chloro-3-fluorobenzene	107		80	120
Bromofluorobenzene	105		80	120
Pentafluorobenzene	120		81	126

Analyte	Result (mg/L)	RL	Flags
Gasoline By NWTPH-G	4.82	1	
Benzene	0.363	0.01	
Toluene	0.0852	0.01	
Ethylbenzene	0.188	0.01	
m&p-Xylene	0.366	0.02	
o-Xylene	0.059	0.01	

# STL Seattle

Client Name	Delta Environmental
Client ID:	MW-32A
Lab ID:	121879-01
Date Received:	6/24/2004
Date Prepared:	6/28/2004
Date Analyzed:	7/7/2004
% Solids	-
Dilution Factor	1

## Diesel and Motor Oil by NWTPH-Dx Modified with Sulfuric Acid Silica Gel Cleanup

Surrogate	% Recovery	Flags	Recovery Limits	
			Low	High
o-terphenyl	116		50	150

Analyte	Result (mg/L)	PQL	MRL	Flags
#2 Diesel	1.47	0.245	0.123	X1
Motor Oil	0.381	0.49	0.245	J

X1 - Chromatogram suggests this might be overlap from gasoline range

# STL Seattle

Client Name	Delta Environmental
Client ID:	MW-33
Lab ID:	121879-02
Date Received:	6/24/2004
Date Prepared:	6/28/2004
Date Analyzed:	7/7/2004
% Solids	-
Dilution Factor	1

## Diesel and Motor Oil by NWTPH-Dx Modified with Sulfuric Acid Silica Gel Cleanup

Surrogate	% Recovery	Flags	Recovery Limits	
			Low	High
o-terphenyl	120		50	150

Analyte	Result (mg/L)	PQL	MRL	Flags
#2 Diesel	1.33	0.237	0.118	X1
Motor Oil	0.443	0.473	0.237	J

X1 - Chromatogram suggests this might be overlap from gasoline range

# STL Seattle

Client Name	Delta Environmental
Client ID:	MW-34
Lab ID:	121879-03
Date Received:	6/24/2004
Date Prepared:	6/28/2004
Date Analyzed:	7/7/2004
% Solids	-
Dilution Factor	1

## Diesel and Motor Oil by NWTPH-Dx Modified with Sulfuric Acid Silica Gel Cleanup

Surrogate	% Recovery	Flags	Recovery Limits	
			Low	High
o-terphenyl	130		50	150

Analyte	Result (mg/L)	PQL	MRL	Flags
#2 Diesel	1.9	0.238	0.119	X1
Motor Oil	ND	0.475	0.238	

X1 - Chromatogram suggests this might be overlap from gasoline range



# STL Seattle

Client Name	Delta Environmental
Client ID:	MW-35
Lab ID:	121879-04
Date Received:	6/24/2004
Date Prepared:	6/28/2004
Date Analyzed:	7/7/2004
% Solids	-
Dilution Factor	1

## Diesel and Motor Oil by NWTPH-Dx Modified with Sulfuric Acid Silica Gel Cleanup

Surrogate	% Recovery	Flags	Recovery Limits	
			Low	High
o-terphenyl	123		50	150

Analyte	Result (mg/L)	PQL	MRL	Flags
#2 Diesel	0.21	0.238	0.119	J
Motor Oil	ND	0.477	0.238	

# STL Seattle

Client Name	Delta Environmental
Client ID:	MW-37
Lab ID:	121879-05
Date Received:	6/24/2004
Date Prepared:	6/28/2004
Date Analyzed:	7/7/2004
% Solids	-
Dilution Factor	1

## Diesel and Motor Oil by NWTPH-Dx Modified with Sulfuric Acid Silica Gel Cleanup

Surrogate	% Recovery	Flags	Recovery Limits	
			Low	High
o-terphenyl	87.6		50	150

Analyte	Result (mg/L)	PQL	MRL	Flags
#2 Diesel	0.487	0.237	0.119	X1
Motor Oil	0.294	0.474	0.237	J

X1 - Chromatogram suggests this might be overlap from gasoline range

# STL Seattle

Client Name	Delta Environmental
Client ID:	MW-45
Lab ID:	121879-06
Date Received:	6/24/2004
Date Prepared:	6/28/2004
Date Analyzed:	7/7/2004
% Solids	-
Dilution Factor	1

## Diesel and Motor Oil by NWTPH-Dx Modified with Sulfuric Acid Silica Gel Cleanup

Surrogate	% Recovery	Flags	Recovery Limits	
			Low	High
o-terphenyl	114		50	150

Analyte	Result (mg/L)	PQL	MRL	Flags
#2 Diesel	0.365	0.236	0.118	X1
Motor Oil	0.358	0.472	0.236	J

X1 - Chromatogram suggests this might be overlap from gasoline range

# STL Seattle

Client Name	Delta Environmental
Client ID:	MW-50
Lab ID:	121879-07
Date Received:	6/24/2004
Date Prepared:	6/28/2004
Date Analyzed:	7/7/2004
% Solids	-
Dilution Factor	1

## Diesel and Motor Oil by NWTPH-Dx Modified with Sulfuric Acid Silica Gel Cleanup

Surrogate	% Recovery	Flags	Recovery Limits	
			Low	High
o-terphenyl	120		50	150

Analyte	Result (mg/L)	PQL	MRL	Flags
#2 Diesel	0.874	0.237	0.118	X1
Motor Oil	ND	0.474	0.237	

X1 - Chromatogram suggests this might be overlap from gasoline range

# STL Seattle

Client Name	Delta Environmental
Client ID:	MW-51
Lab ID:	121879-08
Date Received:	6/24/2004
Date Prepared:	6/28/2004
Date Analyzed:	7/7/2004
% Solids	-
Dilution Factor	1

## Diesel and Motor Oil by NWTPH-Dx Modified with Sulfuric Acid Silica Gel Cleanup

Surrogate	% Recovery	Flags	Recovery Limits	
			Low	High
o-terphenyl	111		50	150

Analyte	Result (mg/L)	PQL	MRL	Flags
#2 Diesel	0.129	0.237	0.118	J
Motor Oil	ND	0.474	0.237	

# STL Seattle

Client Name	Delta Environmental
Client ID:	MW-52
Lab ID:	121879-09
Date Received:	6/24/2004
Date Prepared:	6/28/2004
Date Analyzed:	7/7/2004
% Solids	-
Dilution Factor	1

## Diesel and Motor Oil by NWTPH-Dx Modified with Sulfuric Acid Silica Gel Cleanup

Surrogate	% Recovery	Flags	Recovery Limits	
			Low	High
o-terphenyl	105		50	150

Analyte	Result (mg/L)	PQL	MRL	Flags
#2 Diesel	0.593	0.248	0.124	X1
Motor Oil	ND	0.495	0.248	

X1 - Chromatogram suggests this might be overlap from gasoline range

# STL Seattle

Client Name	Delta Environmental
Client ID:	MW-53
Lab ID:	121879-10
Date Received:	6/24/2004
Date Prepared:	6/28/2004
Date Analyzed:	7/7/2004
% Solids	-
Dilution Factor	1

## Diesel and Motor Oil by NWTPH-Dx Modified with Sulfuric Acid Silica Gel Cleanup

Surrogate	% Recovery	Flags	Recovery Limits	
			Low	High
o-terphenyl	101		50	150

Analyte	Result (mg/L)	PQL	MRL	Flags
#2 Diesel	0.75	0.24	0.12	X1
Motor Oil	ND	0.48	0.24	

X1 - Chromatogram suggests this might be overlap from gasoline range

# STL Seattle

Lab ID:	Method Blank - GB3845
Date Received:	-
Date Prepared:	7/1/04
Date Analyzed:	7/1/04
% Solids	-
Dilution Factor	1

## GRO by NWTPH-Gx / Volatile Aromatics by 5030/8021B

Surrogate	% Recovery	Flags	Recovery Limits	
			Low	High
Trifluorotoluene	75.2		50	150
1-Chloro-3-fluorobenzene	98.1		80	120
Bromofluorobenzene	94.7		80	120
Pentafluorobenzene	105		81	126

Analyte	Result (mg/L)	RL	Flags
Gasoline By NWTPH-G	ND	0.1	
Benzene	ND	0.001	
Toluene	ND	0.001	
Ethylbenzene	ND	0.001	
m&p-Xylene	ND	0.002	
o-Xylene	ND	0.001	



# STL Seattle

## Blank Spike/Blank Spike Duplicate Report

Lab ID: GB3845  
Date Prepared: 7/1/04  
Date Analyzed: 7/1/04  
QC Batch ID: GB3845

GRO by NWTPH-Gx / Volatile Aromatics by 5030/8021B

Compound Name	Blank Result (mg/L)	Spike Amount (mg/L)	BS Result (mg/L)	BS % Rec.	BSD Result (mg/L)	BSD % Rec.	RPD	Flag
Gasoline By NWTPH-G	0	1.25	1.1	87.8	1.12	89.3	1.7	
Benzene	0	0.0184	0.0173	93.7	0.0179	97	3.5	
Toluene	0	0.0869	0.0922	106	0.0957	110	3.7	
Ethylbenzene	0	0.0205	0.0187	91.2	0.0195	95.4	4.5	
m&p-Xylene	0	0.0705	0.0718	102	0.0744	105	2.9	
o-Xylene	0	0.0284	0.0269	94.4	0.0278	97.7	3.4	

# STL Seattle

Lab ID:	Method Blank - DW0634
Date Received:	-
Date Prepared:	6/28/2004
Date Analyzed:	7/7/2004
% Solids	-
Dilution Factor	1

## Diesel and Motor Oil by NWTPH-Dx Modified with Sulfuric Acid Silica Gel Cleanup

Surrogate	% Recovery	Flags	Recovery Limits	
			Low	High
o-terphenyl	82.1		50	150

Analyte	Result (mg/L)	PQL	MRL	Flags
#2 Diesel	ND	0.25	0.125	
Motor Oil	ND	0.5	0.25	

# STL Seattle

## Blank Spike/Blank Spike Duplicate Report

Lab ID: DW0634  
Date Prepared: 6/28/2004  
Date Analyzed: 7/7/2004  
QC Batch ID: DW0634

Diesel and Motor Oil by NWTPH-Dx Modified with Sulfuric Acid Silica Gel Cleanup

Compound Name	Blank Result (mg/L)	Spike Amount (mg/L)	BS Result (mg/L)	BS % Rec.	BSD Result (mg/L)	BSD % Rec.	RPD	Flag
#2 Diesel	0	5	5.35	107	5.12	102	-4.8	
Motor Oil	0	5	5.62	112	5.95	119	6.1	

**DATA QUALIFIERS AND ABBREVIATIONS**

- B1:** This analyte was detected in the associated method blank. The analyte concentration was determined not to be significantly higher than the associated method blank (less than ten times the concentration reported in the blank).
- B2:** This analyte was detected in the associated method blank. The analyte concentration in the sample was determined to be significantly higher than the method blank (greater than ten times the concentration reported in the blank).
- C1:** Second column confirmation was performed. The relative percent difference value (RPD) between the results on the two columns was evaluated and determined to be < 40%.
- C2:** Second column confirmation was performed. The RPD between the results on the two columns was evaluated and determined to be > 40%. The higher result was reported unless anomalies were noted.
- C3:** Second analysis confirmation was performed. The relative percent difference value (RPD) between the results on the two columns was evaluated and determined to be  $\leq$  30%.
- C4:** Second analysis confirmation was performed. The RPD between the results on the two columns was evaluated and determined to be > 30%. The presence of this analyte was not verified per WAC 246-290-010. The original analysis was reported unless anomalies were noted.
- M:** GC/MS confirmation was performed. The result derived from the original analysis was reported.
- D:** The reported result for this analyte was calculated based on a secondary dilution factor.
- E:** The concentration of this analyte exceeded the instrument calibration range and should be considered an estimated quantity.
- J:** The analyte was analyzed for and positively identified, but the associated numerical value is an estimated quantity.
- MCL:** Maximum Contaminant Level
- MDL:** Method Detection Limit
- MRL:** Method Reporting Limit
- N:** See analytical narrative
- ND:** Not Detected
- PQL:** Practical Quantitation Limit
- X1:** Contaminant does not appear to be "typical" product. Elution pattern suggests it may be \_\_\_\_\_.
- X2:** Contaminant does not appear to be "typical" product.
- X3:** Identification and quantitation of the analyte or surrogate was complicated by matrix interference.
- X4:** RPD for duplicates was outside advisory QC limits. The sample was re-analyzed with similar results. The sample matrix may be nonhomogeneous.
- X4a:** RPD for duplicates outside advisory QC limits due to analyte concentration near the method practical quantitation limit/detection limit.
- X5:** Matrix spike recovery was not determined due to the required dilution.
- X6:** Recovery and/or RPD values for matrix spike(/matrix spike duplicate) outside advisory QC limits. Sample was re-analyzed with similar results.
- X7:** Recovery and/or RPD values for matrix spike(/matrix spike duplicate) outside advisory QC limits. Matrix interference may be indicated based on acceptable blank spike recovery and/or RPD.
- X7a:** Recovery and/or RPD values for this spiked analyte outside advisory QC limits due to high concentration of the analyte in the original sample.
- X8:** Surrogate recovery was not determined due to the required dilution.
- X9:** Surrogate recovery outside advisory QC limits due to matrix interference.

STL Seattle  
5755 8th Street E.  
Tacoma, WA 98424  
Tel. 253-922-2310  
Fax 253-922-5047  
www.st-inc.com

## Chain of Custody Record

**Client** Conoco Phillips c/o Delta Environ. **Project Manager** Eric Larsen  
**Address** 17720 NE 65th St Suite 201 **Telephone Number (Area Code)/Fax Number** 425-558-0134 / 425-869-7494  
**City** Redmond **State** WA **Zip Code** 98052 **Site Contact** Mar. Kifley  
**Project Name and Location (State)** 600 Westlake Ave N, Seattle **City/Waybill Number**  
**Contract/Purchase Order/Quote No.** 1396ELO01

Sample I.D. and Location/Description (Containers for each sample may be combined on one line)	Date	Time	Matrix			Containers & Preservatives					Special Instructions/ Conditions of Receipt		
			Air	Aqueous	Sed.	Soil	Unpres.	H2SO4	HNO3	HCl		NaOH	ZnAc/ NaOH
1 MW-32A	6/22/04	12:10	X						X				*NMPH-Dx w/acid
2 MW-33		10:10											silica gel cleanup
3 MW-34		12:20											
4 MW-35		10:20											
5 MW-37		10:40											
6 MW-45		10:25											
7 MW-50		10:00											
8 MW-51		10:15											
9 MW-52		12:05											
10 MW-53		12:35											

**Chain of Custody Number** 01671 **Date** 6/22/04 **Page** 1 of 1

**Analysis (Attach list if more space is needed)**

**Sample Disposal**  Disposal By Lab  Return To Client  Archive For \_\_\_\_\_ Months

**Possible Hazard Identification**  Non-Hazard  Flammable  Skin Irritant  Poison B  Unknown

**QC Requirements (Specify)**

**Turn Around Time Required (business days)**  24 Hours  48 Hours  5 Days  10 Days  15 Days  Other \_\_\_\_\_

**1. Relinquished By** Tracy Bennett **Date** 6/24/04 **Time** 9:45  
**2. Relinquished By** Greg Bennett **Date** 6/24/04 **Time** 11:35 AM  
**3. Relinquished By** \_\_\_\_\_ **Date** \_\_\_\_\_ **Time** \_\_\_\_\_

**Received By** Greg J. Bennett **Date** 6/24/04 **Time** 9:45 AM  
**Received By** K. Wesley **Date** 6/24/04 **Time** 11:35 AM

**Comments**

**DISTRIBUTION:** WHITE - Stays with the Samples; CANARY - Returned to Client with Report; PINK - Field Copy

STL8274580 (12/02)

**GROUNDWATER SAMPLING PROCEDURES AND FIELD SHEETS**

Quarterly Groundwater Sampling  
ConocoPhillips Site No. 255353

## **GROUNDWATER MONITORING AND SAMPLING**

---

Before the sampling event, Delta measured depth to water in each groundwater monitoring well at the facility with an electronic water level meter. This information was recorded on waterproof field sheets. Groundwater elevations (GWE) were measured to an accuracy of 0.01 feet. Wells were sampled after purging three casing volumes of water from the well (or until dry). After the well had recharged to approximately 80% of static level, samples were collected using a disposable polyethylene bailer and placed in the appropriate laboratory-provided container. Samples were labeled, placed into ice filled coolers, logged onto chain-of-custody forms and transported to the laboratory.