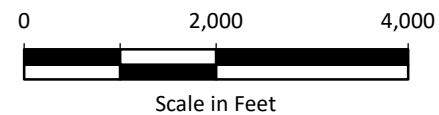


Legend

- Boeing Property
- City Limits
- Waterways
- Water Bodies
- Wetland Areas

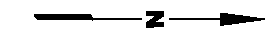
Note

1. Black and white reproduction of this color original may reduce its effectiveness and lead to incorrect interpretation.



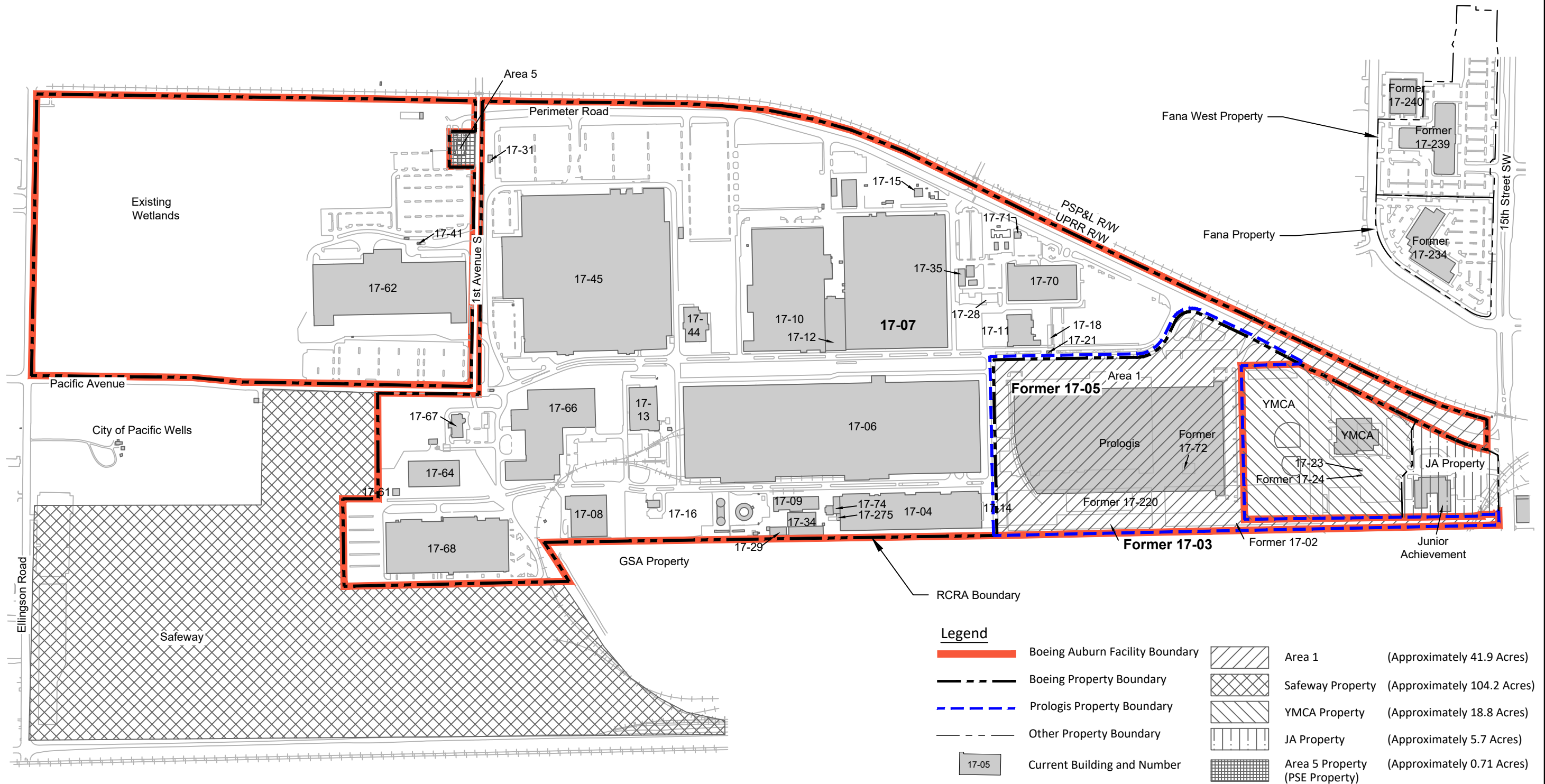
Data Source: Esri World Topo Map

Boeing Auburn
Cleanup Action Plan
Auburn, Washington



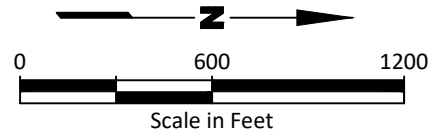
Vicinity Map

Figure
1-1



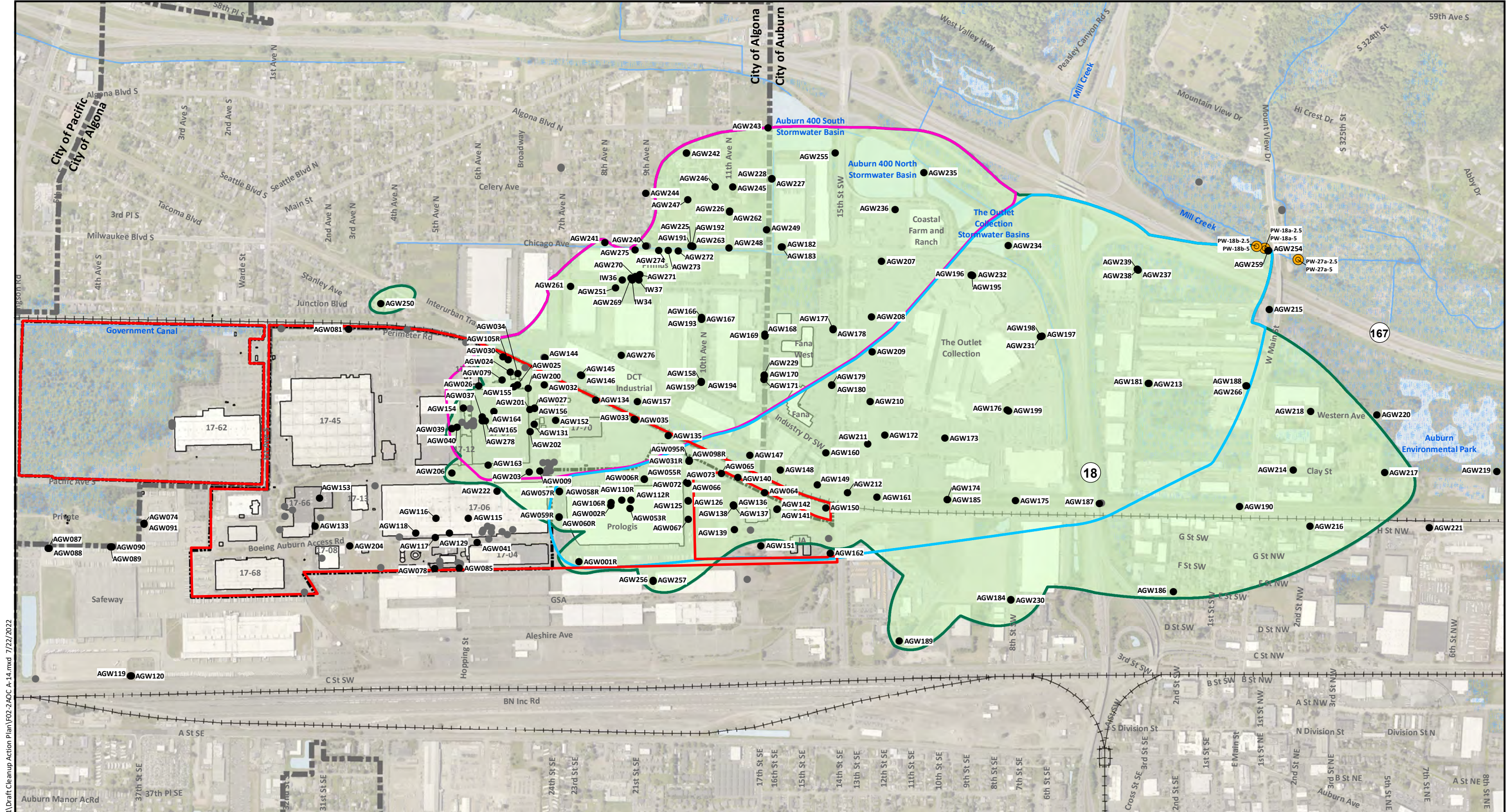
Notes

- Former Building Numbers 17-234, 17-239 and 17-240 are currently owned by Fana.
- Black and white reproduction of this color original may reduce its effectiveness and lead to incorrect interpretation.



Base map source: Geomatrix 2003

Legend	
	Boeing Auburn Facility Boundary
	Boeing Property Boundary
	Prologis Property Boundary
	Other Property Boundary
	Current Building and Number
	Area 1 (Approximately 41.9 Acres)
	Safeway Property (Approximately 104.2 Acres)
	YMCA Property (Approximately 18.8 Acres)
	JA Property (Approximately 5.7 Acres)
	Area 5 Property (PSE Property) (Approximately 0.71 Acres)



Notes

- Monitoring well labels are included for wells in the current monitoring well network sampled for chlorinated volatile organic compounds (cVOCs).
- Black and white reproduction of this color original may reduce its effectiveness and lead to incorrect interpretation.

Legend

- Monitoring Well
- Monitoring Well not Currently Sampled for cVOCs
- Pore Water Sample Location
- City Limits
- Boeing Auburn Facility Boundary
- Boeing Property
- Area 1 Plume
- Western Plume
- TCE/VC Plume Extent - June 2021
- Wetland Areas
- Water Bodies
- Waterways

0 1,000 2,000

Scale in Feet

Data Source: King County GIS.

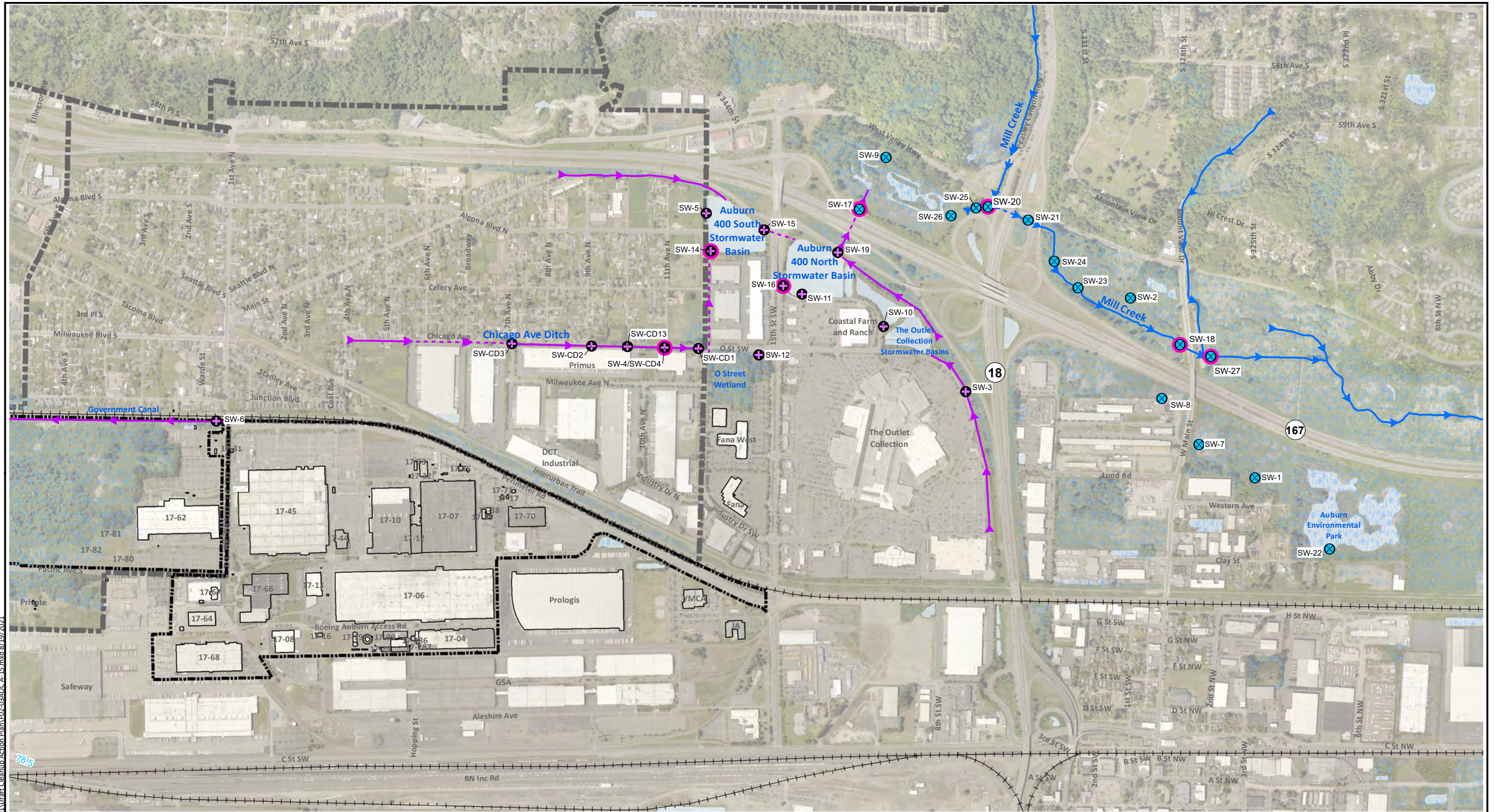
Boeing Auburn
Cleanup Action Plan
Auburn, Washington

**Current Extent of the Site and
Approximate Extents of Area 1
and Western Plumes**

Figure
2-2

G:\Projects\025\164\180\30\1\Draft Cleanup Action Plan\F02-2AOC A-14.mxd 7/22/2022



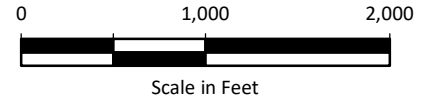
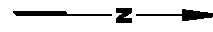


Legend

- Stormwater Sample Location
- Surface Water Sample Location
- Ongoing Sample Location
- Open Surface Water Channel
- Open Stormwater Ditch
- Piped Surface Water Conveyance
- Piped Stormwater Conveyance
- Wetland Areas
- Boeing Property
- City Limits

Notes

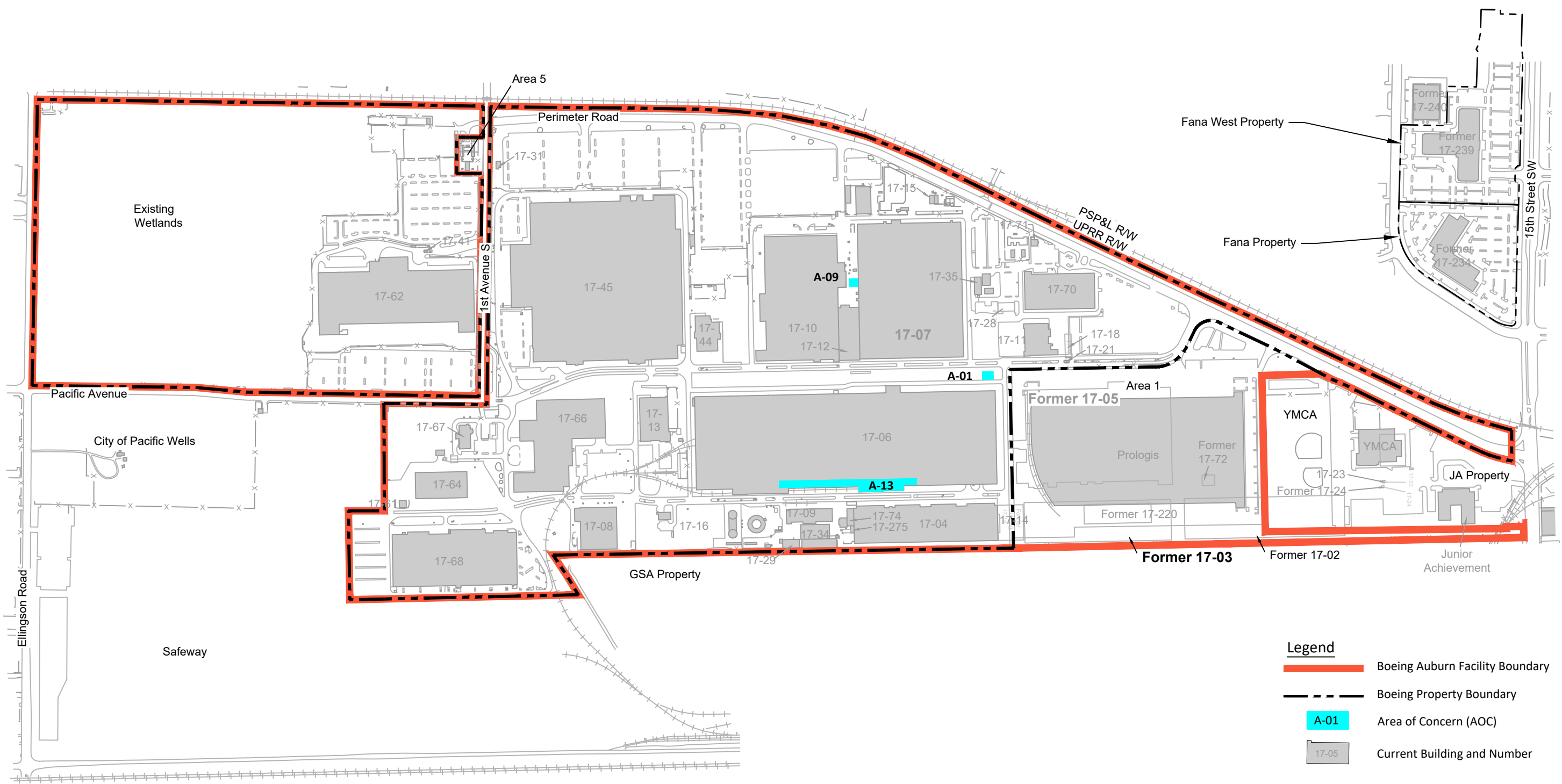
1. Surface water sampling locations are designated by SW.
2. The locations of stormwater/surface water features are approximate.
3. Black and white reproduction of this color original may reduce its effectiveness and lead to incorrect interpretation.



Data Source: King County GIS.

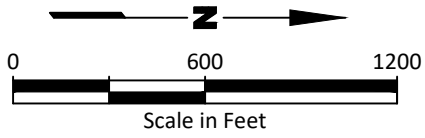
Boeing Auburn Cleanup Action Plan Auburn, Washington	Stormwater and Surface Water Features	Figure 2-3
--	--	----------------------

G:\Projects\0295164\1801301\Draft Cleanup Action Plan\02-03AOC-A-15.mxd, 8/19/2021



Notes

1. Former Building Numbers 17-234, 17-239 and 17-240 are currently owned by Fana.
2. Black and white reproduction of this color original may reduce its effectiveness and lead to incorrect interpretation.



Base map source: Geomatrix 2003



Boeing Auburn
Cleanup Action Plan
Auburn, Washington

**Boeing Auburn Facility
Areas of Concern Evaluated
in the Feasibility Study**

Figure
2-4

17-07

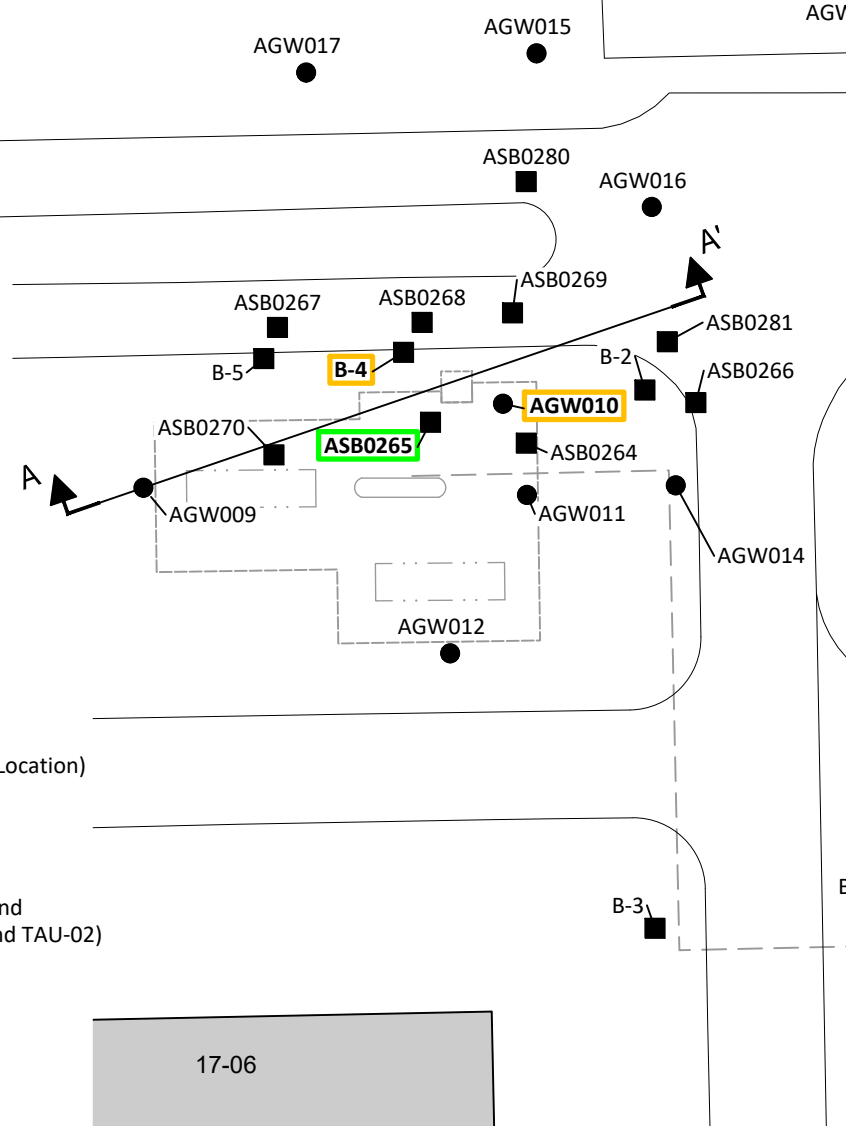
17-11

Notes

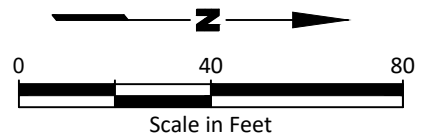
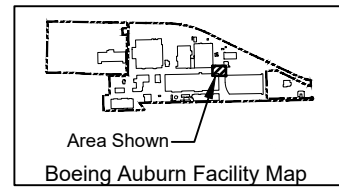
1. Soil samples collected 1990, 1991, and 2017.
2. Groundwater samples are most recent as of December 2018.
3. Black and white reproduction of this color original may reduce its effectiveness and lead to incorrect interpretation.

Legend

- AGW012 ● Monitoring Well Location
- ASB0267 ■ Boring Location
- AGW010 Groundwater CUL Exceedance
- ASB0265 Soil CUL Exceedance
- - - Abandoned Piping (Approximate Location)
- 17-06 Current Building and Number
- Former Fuel Island Location
- Former 10,000-Gallon Underground Storage Tank Location (TAU-01 and TAU-02)
- 1990 Excavation Area
- 2004 Excavation Area
- A A' Cross Section Location



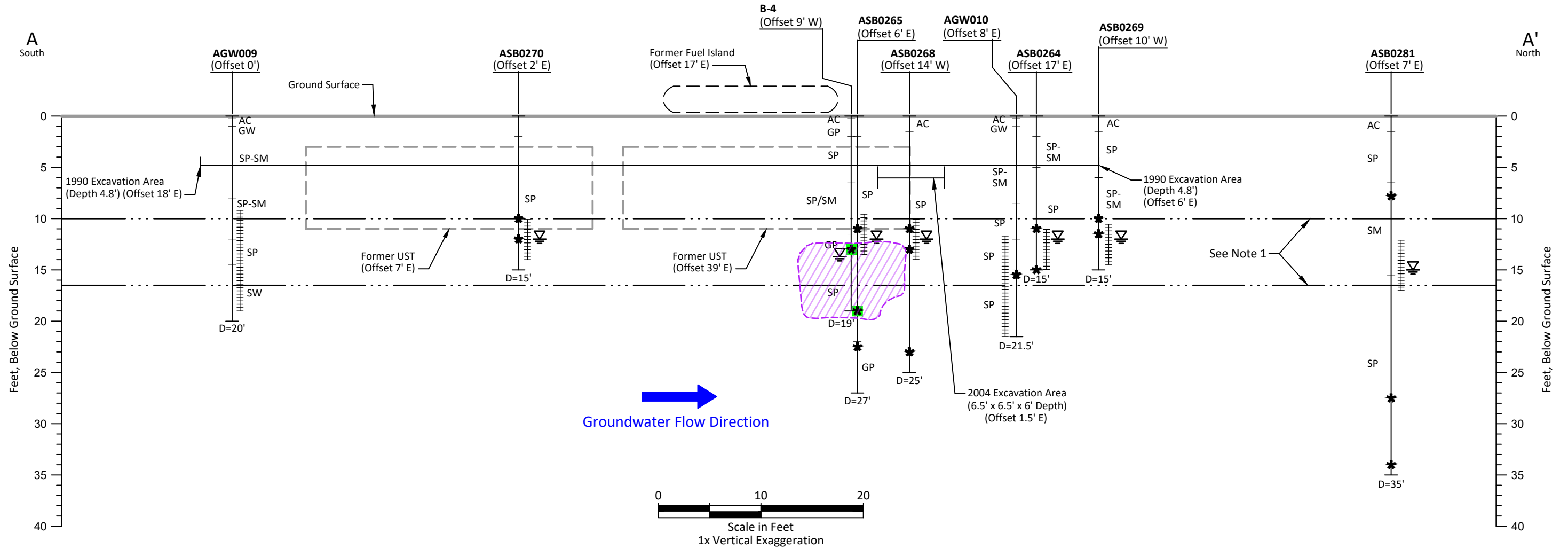
Boeing Property



Base map source: Geomatrix 2003

Boeing Auburn Cleanup Action Plan Auburn, Washington	AOC A-01: Building 17-06 Former Underground Storage Tanks (TAU-01 and TAU-02) Exploration Summary	Figure 2-5
--	--	----------------------





Legend

- ASB0281 (offset: 7' E) — Exploration Designation
- Top of Exploration
- * = Soil sample (Analytes = Not detected above CULs)
- = Soil sample (Analytes = Detected above CULs)
- SM — Unified Soil Classification Symbol (USCS)
- ▽ — Water Level (At Time of Drilling)
- Screen Interval
- D=35' — Depth of Exploration (feet)
- ▨ = Analytes detected above CULs in soil

USCS Soil Legend

- AC = asphalt/concrete pavement
- GP = poorly graded gravel; gravel/sand mixture(s); little or no fines
- GW = well-graded gravel; gravel/sand mixture(s); little or no fines
- SM = silty sand; sand/silt mixture(s)
- SP = poorly graded sand; gravelly sand; little or no fines
- SW = well-graded sand; gravelly sand; little or no fines

Acronyms / Abbreviations

- AOC = area of concern
- DRO = diesel-range organics
- GRO = gasoline-range organics
- mg/kg = milligrams per kilogram
- CUL = cleanup level
- µg/L = micrograms per liter
- UST = underground storage tank

Notes

1. Lines indicated show the maximum and minimum water level elevation measured from AGW009 or AGW010 from December 2003 to December 2018.
2. B-4, AGW009, and AGW010 were completed August 1991, and borings in the "ASB" series were completed June or August 2017.
3. Black and white reproduction of this color original may reduce its effectiveness and lead to incorrect interpretation.

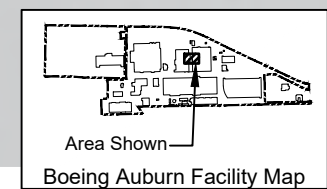
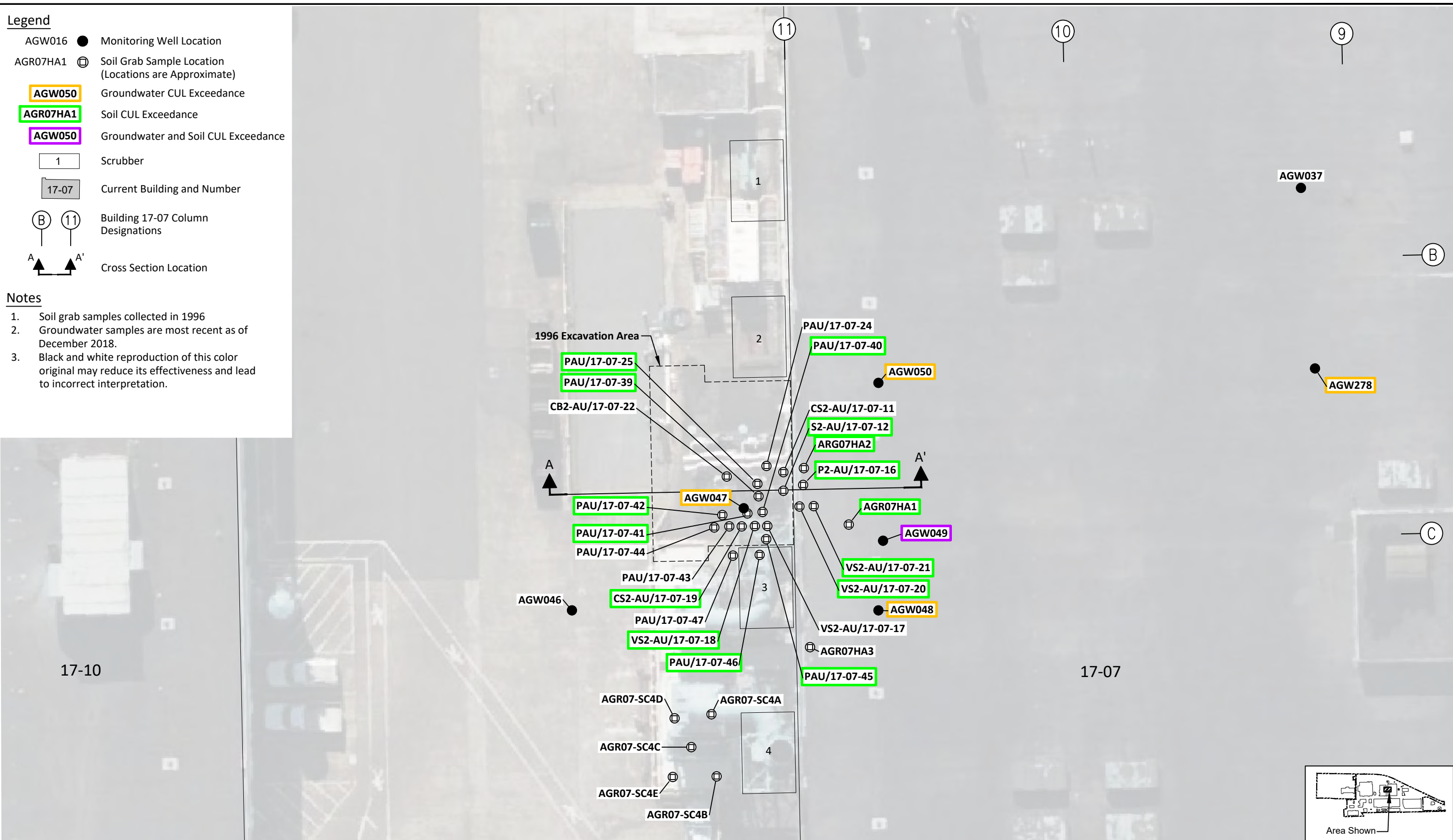
Legend

- AGW016 ● Monitoring Well Location
- AGR07HA1 ⊕ Soil Grab Sample Location (Locations are Approximate)
- AGW050 Groundwater CUL Exceedance
- AGR07HA1 Soil CUL Exceedance
- AGW050 Groundwater and Soil CUL Exceedance
- 1 Scrubber
- 17-07 Current Building and Number
- ⓑ ⓑⓑ Building 17-07 Column Designations
- A A' Cross Section Location

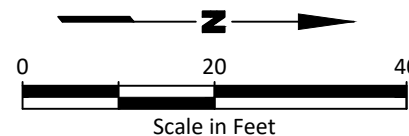
Notes

1. Soil grab samples collected in 1996
2. Groundwater samples are most recent as of December 2018.
3. Black and white reproduction of this color original may reduce its effectiveness and lead to incorrect interpretation.

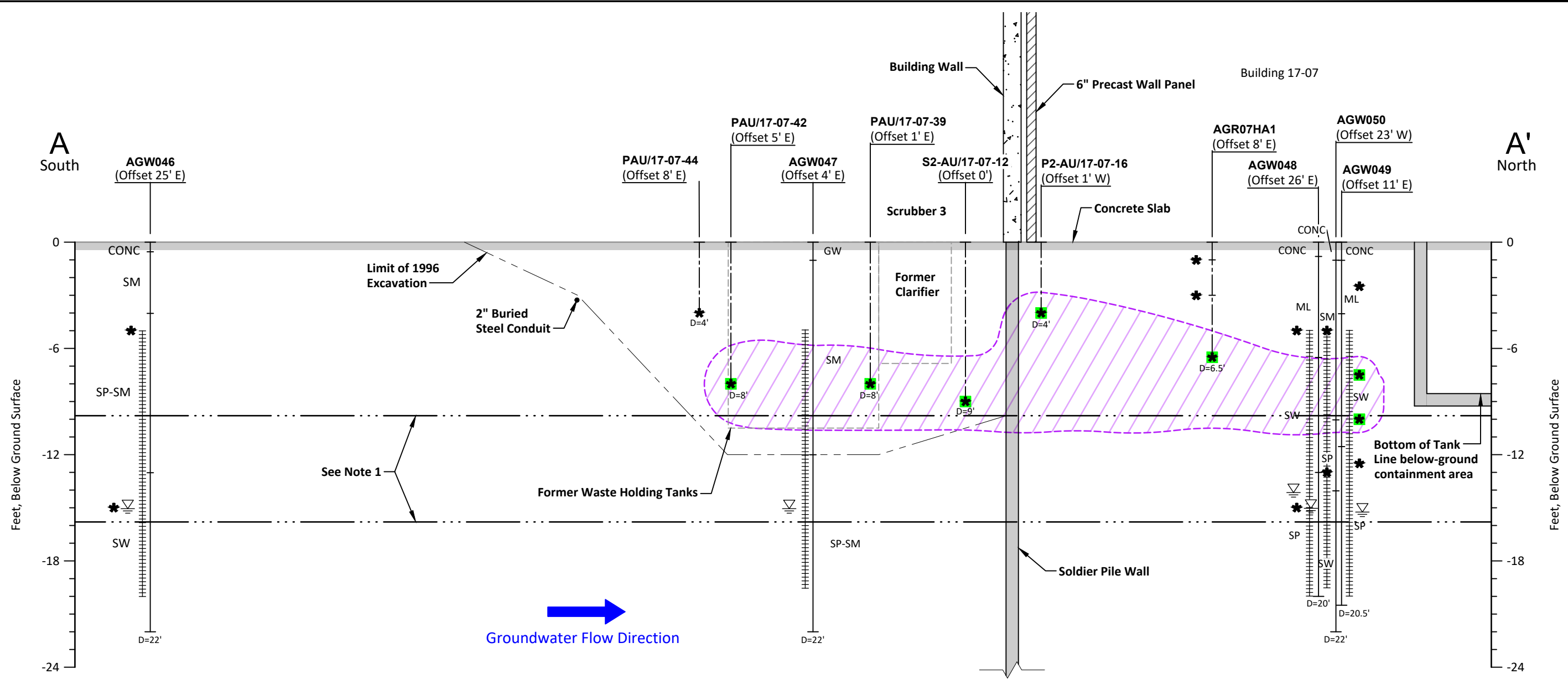
Landau Associates | G:\Projects\025\164\180\301\Draft_Cleanup Action Plan\F02-07_A-09_Summary.dwg | 1/6/2022 3:13 PM | EZICK



Sources: AGI Technologies, Figure 4, 1996; ©Bing, 2019



Landau Associates | G:\Projects\025\164\180\301\Draft_Cleanup Action Plan\F02-08 A-09 CrossSection.dwg | 1/3/2022 5:12 PM | EZICK



Legend

- AGW046 — Exploration Designation (Offset: 25' E)
- Top of Exploration
- ★ = Soil sample (Analytes = Not detected above CULs)
- = Soil sample (Analytes = Detected above CULs)
- SM — Unified Soil Classification Symbol (USCS)
- ▽ — Water Level (At Time of Drilling)
- Screen Interval / Sampling Interval
- D=4' — Depth of Exploration (feet)
- D=22' — Depth of Exploration (feet)

 = Analytes detected above CULs in soil

USCS Soil Legend

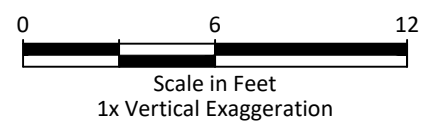
- Conc = Concrete
- GW = Well-graded gravel; gravel/sand mixture(s); little or no fines
- ML = Silt
- SM = Silty sand; sand/silt mixture(s)
- SP = Poorly graded sand; gravelly sand; little or no fines
- SW = Well-graded sand; gravelly sand; little or no fines

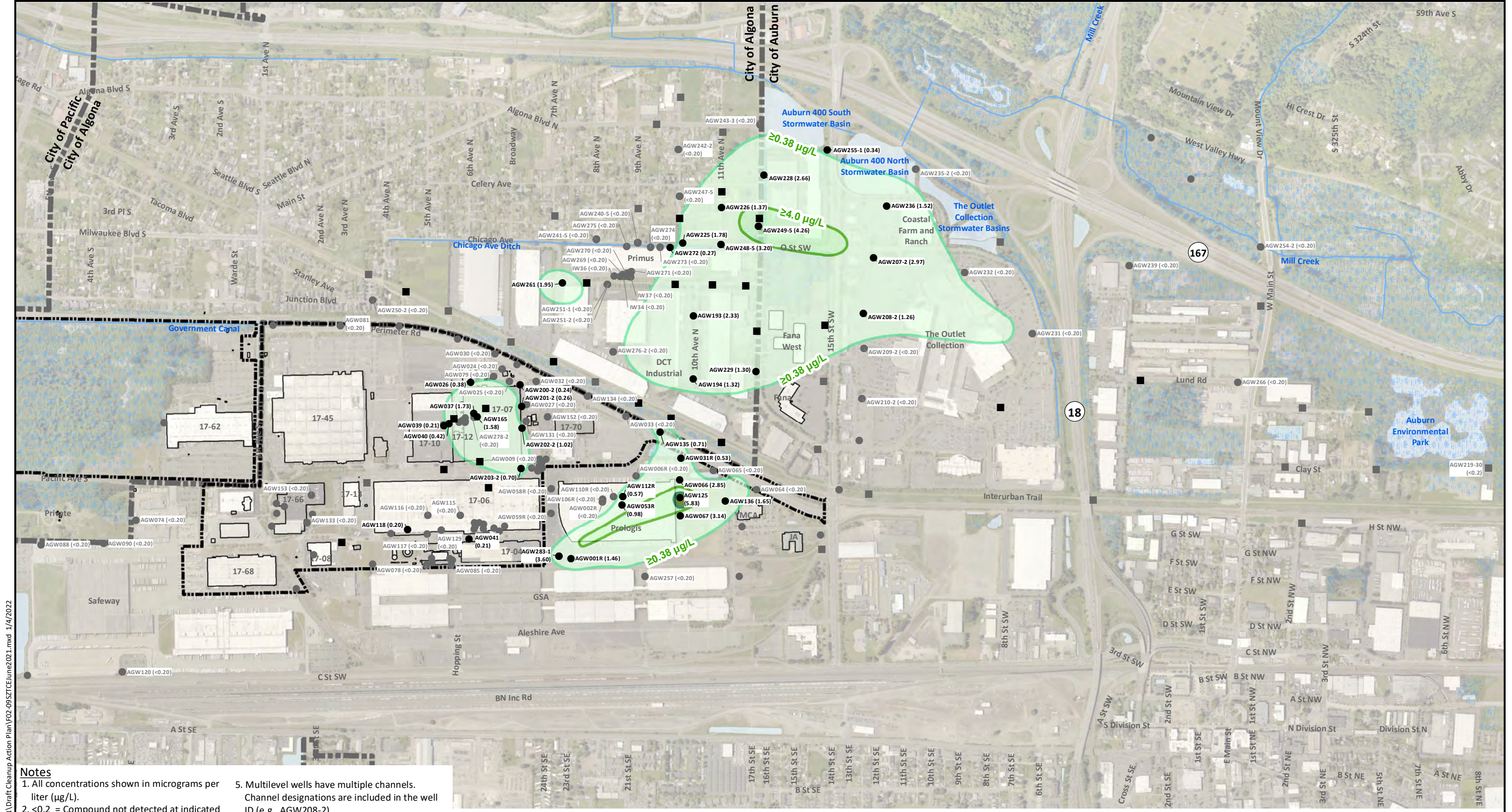
Acronyms / Abbreviations

- AOC = area of concern
- mg/kg = milligrams per kilogram
- CUL = cleanup level
- µg/L = micrograms per liter

Notes

1. Lines indicated show the maximum and minimum water level elevation measured from AGW047-AGW050 from August 2004 to December 2018.
2. All borings and wells shown on this figure were completed in July, August, and September 1996.
3. The limits of the 1996 excavation may not extend to 12 feet below ground surface at all locations. Soil samples shown were collected from soil remaining in place.
4. Black and white reproduction of this color original may reduce its effectiveness and lead to incorrect interpretation.



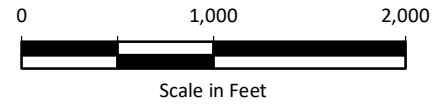


- Notes**
1. All concentrations shown in micrograms per liter (µg/L).
 2. <0.2 = Compound not detected at indicated reporting limit.
 3. Monitoring well results are the most recent.
 4. Black well and boring symbols indicate locations where the compound was detected. Gray well and boring symbols indicate locations where the compound was not detected.
 5. Multilevel wells have multiple channels. Channel designations are included in the well ID (e.g., AGW208-2).
 6. Wells with no results shown are no longer sampled.
 7. Black and white reproduction of this color original may reduce its effectiveness and lead to incorrect interpretation.

Legend

- Monitoring Well Location
- Historical Borehole Grab Sample Location
- Non-Detect or No Longer Sampled
- City Limits
- Boeing Property
- Wetland Areas
- Water Bodies
- Waterways

TCE Contour (≥5.0 µg/L)
 TCE Contour (≥4.0 µg/L)
 TCE Contour (≥0.38 µg/L)



Data Source: King County.

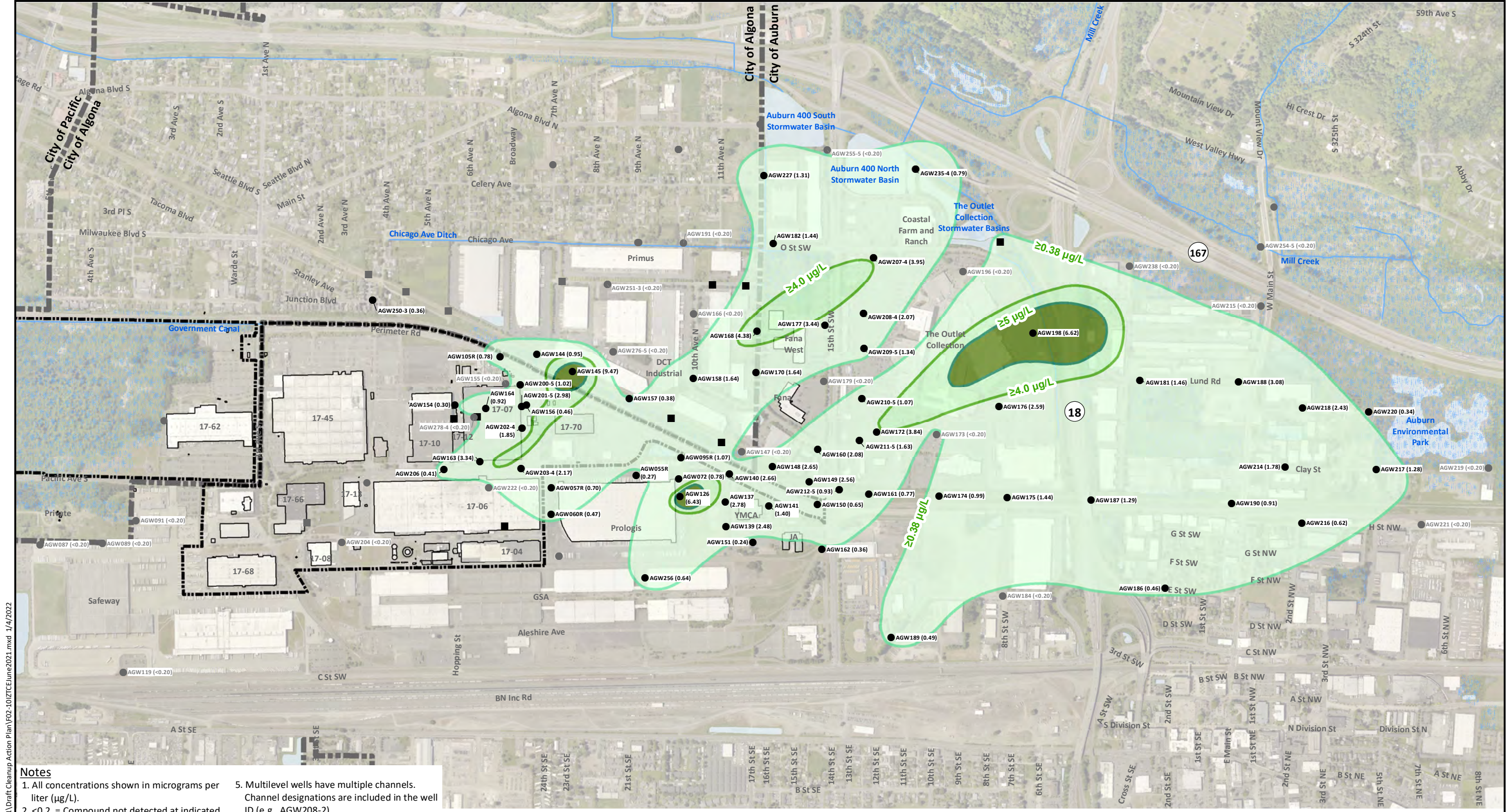
Boeing Auburn
Cleanup Action Plan
Auburn, Washington

**AOC A-14: Shallow Zone
Trichloroethene Concentrations
June 2021**

Figure
2-9

G:\Projects\02511641301\Draft Cleanup Action Plan\F02-095ZTCEJune2021.mxd 1/4/2022

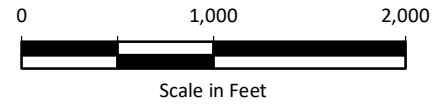




- Notes**
- All concentrations shown in micrograms per liter (µg/L).
 - <0.2 = Compound not detected at indicated reporting limit.
 - Monitoring well results are the most recent.
 - Black well and boring symbols indicate locations where the compound was detected. Gray well and boring symbols indicate locations where the compound was not detected.
 - Multilevel wells have multiple channels. Channel designations are included in the well ID (e.g., AGW208-2).
 - Wells with no results shown are no longer sampled.
 - Black and white reproduction of this color original may reduce its effectiveness and lead to incorrect interpretation.

Legend

- Monitoring Well Location
- Historical Borehole Grab Sample Location
- Non-Detect or No Longer Sampled
- TCE Contour (≥5.0 µg/L)
- TCE Contour (≥4.0 µg/L)
- TCE Contour (≥0.38 µg/L)
- ▬ City Limits
- ▬ Boeing Property
- Wetland Areas
- Water Bodies
- Waterways



Data Source: King County GIS.

Boeing Auburn
Cleanup Action Plan
Auburn, Washington

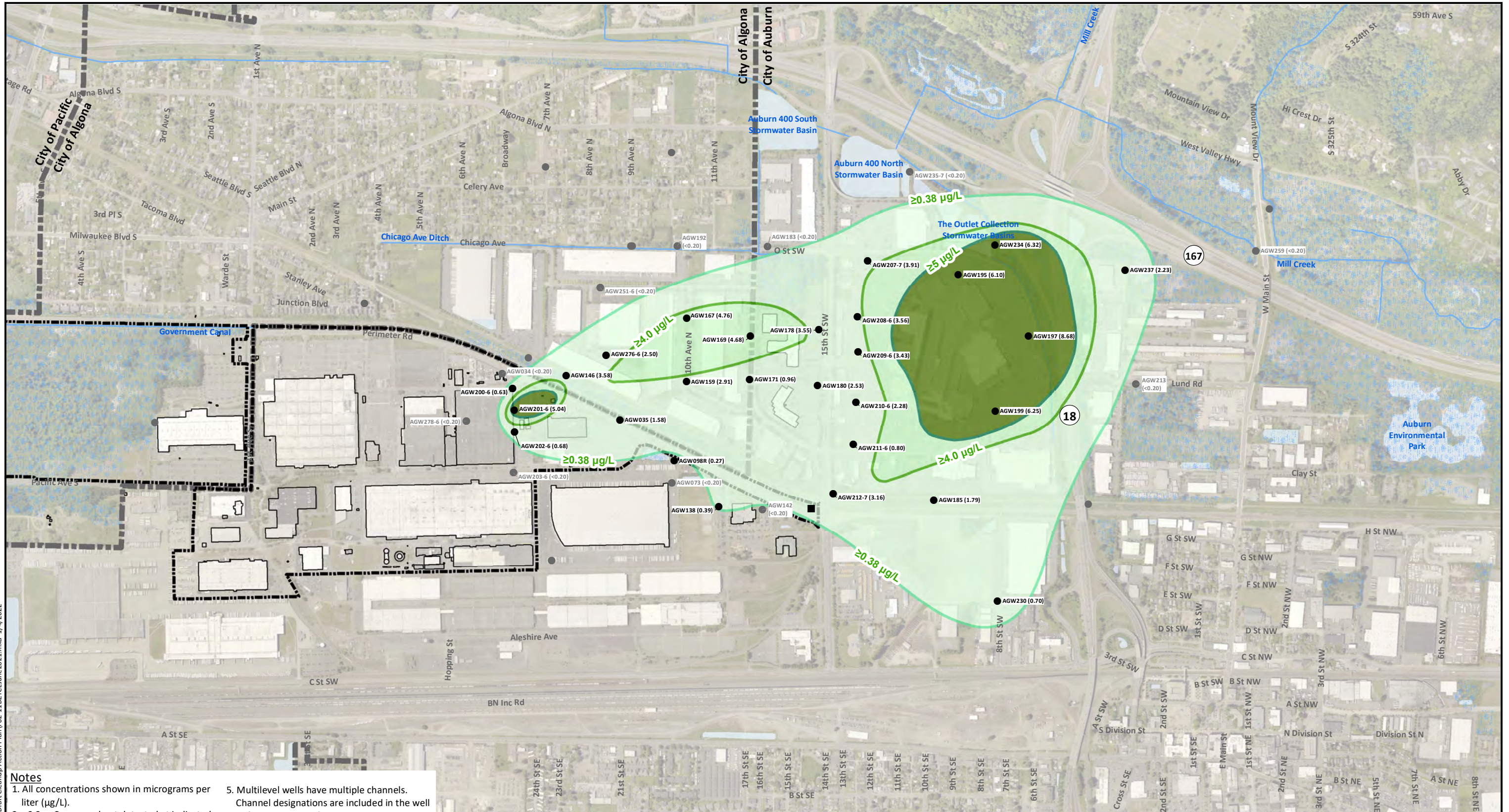
AOC A-14: Intermediate Zone
Trichloroethene Concentrations
June 2021

Figure
2-10

G:\Projects\02511641301\Draft Cleanup Action Plan\F02-10\TCEJune2021.mxd 1/4/2022



G:\Projects\025116411801\301\Draft Cleanup Action Plan\F02-11DZTCEJune2021.mxd 1/4/2022

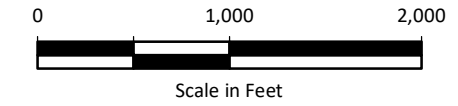


Notes

1. All concentrations shown in micrograms per liter (µg/L).
2. <0.2 = Compound not detected at indicated reporting limit.
3. Monitoring well results are the most recent.
4. Black well and boring symbols indicate locations where the compound was detected. Gray well and boring symbols indicate locations where the compound was not detected.
5. Multilevel wells have multiple channels. Channel designations are included in the well ID (e.g., AGW208-2).
6. Wells with no results shown are no longer sampled.
7. Black and white reproduction of this color original may reduce its effectiveness and lead to incorrect interpretation.

Legend

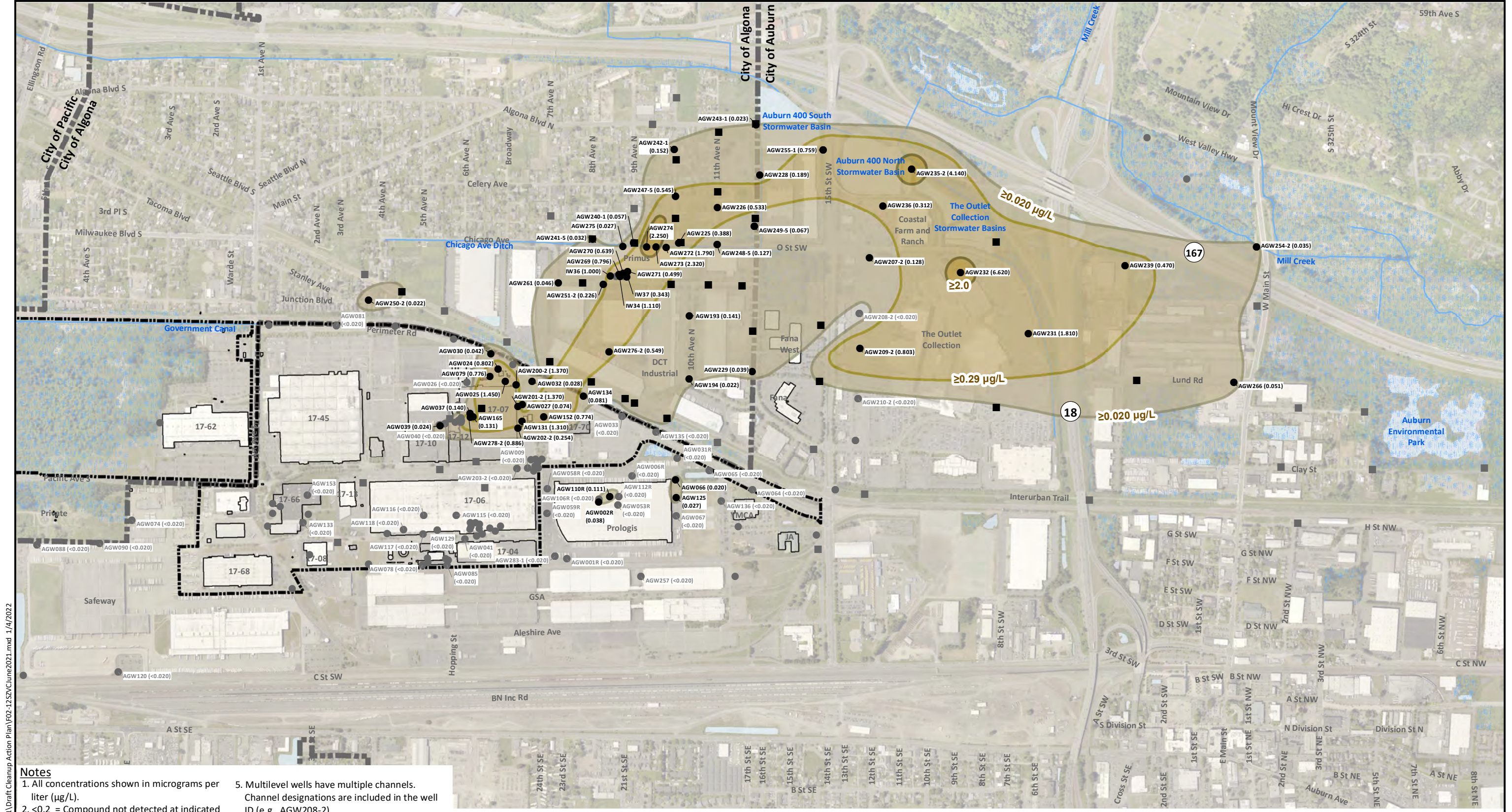
- Monitoring Well Location
- Historical Borehole Grab Sample Location
- Non-Detect or No Longer Sampled
- TCE Contour (≥25.0 µg/L)
- TCE Contour (≥24.0 µg/L)
- TCE Contour (≥0.38 µg/L)
- City Limits
- - - Boeing Property
- Wetland Areas
- Water Bodies
- Waterways



Data Source: King County GIS.

Boeing Auburn Cleanup Action Plan Auburn, Washington	AOC A-14: Deep Zone Trichloroethene Concentrations June 2021	Figure 2-11
--	---	-----------------------

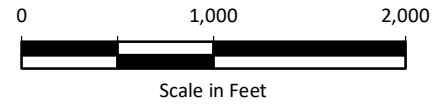




- Notes**
1. All concentrations shown in micrograms per liter (µg/L).
 2. <0.2 = Compound not detected at indicated reporting limit.
 3. Monitoring well results are the most recent.
 4. Black well and boring symbols indicate locations where the compound was detected. Gray well and boring symbols indicate locations where the compound was not detected.
 5. Multilevel wells have multiple channels. Channel designations are included in the well ID (e.g., AGW208-2).
 6. Wells with no results shown are no longer sampled.
 7. Black and white reproduction of this color original may reduce its effectiveness and lead to incorrect interpretation.

Legend

- Monitoring Well Location
- Historical Borehole Grab Sample Location
- Non-Detect
- Vinyl Chloride Contour (≥2.0 µg/L)
- Vinyl Chloride Contour (≥0.29 µg/L)
- Vinyl Chloride Contour (≥0.020 µg/L)
- ▬ City Limits
- ▬ Boeing Property
- Wetland Areas
- Water Bodies
- Waterways

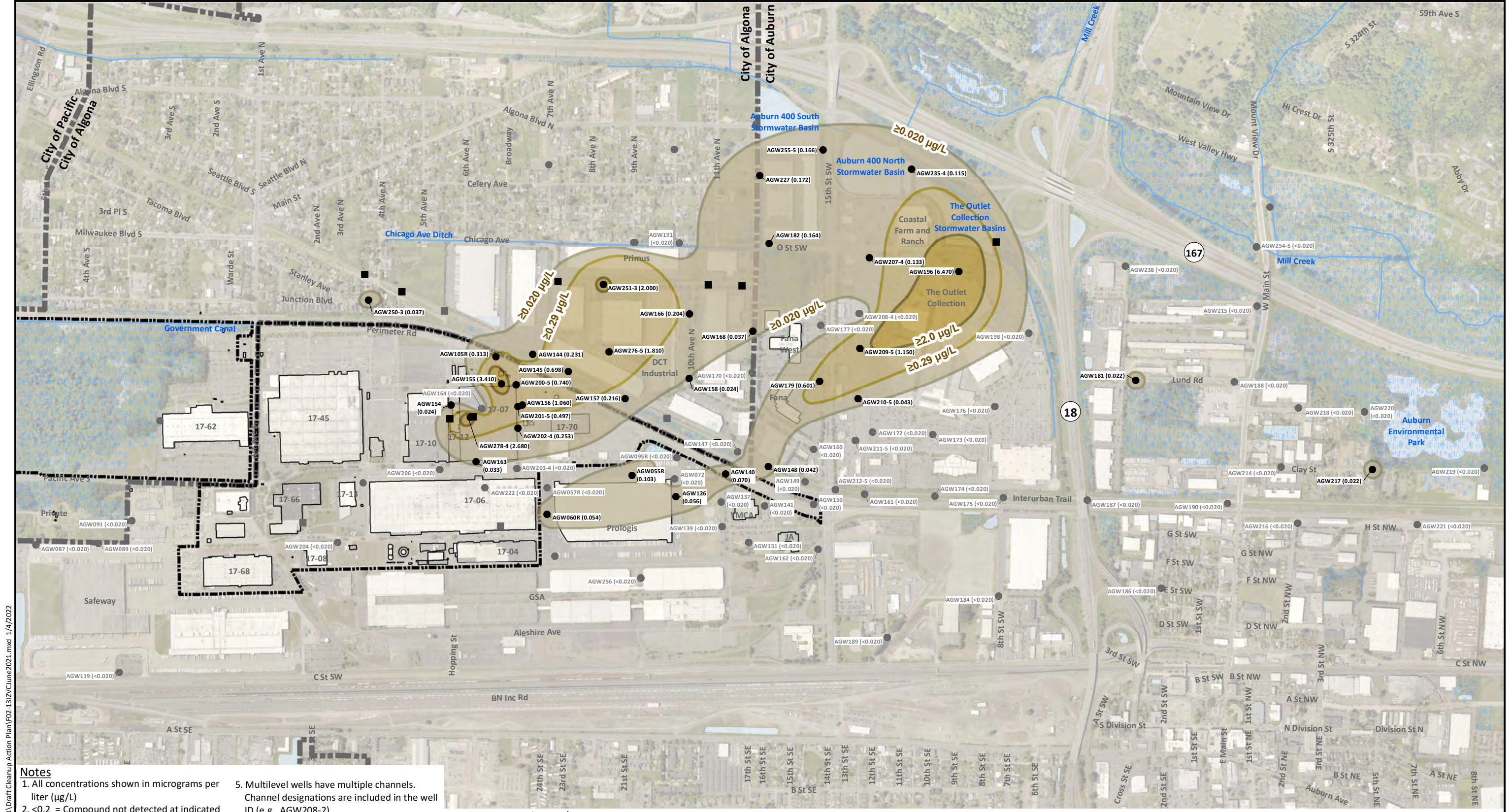


Data Source: King County GIS.

Boeing Auburn Cleanup Action Plan Auburn, Washington	AOC A-14: Shallow Zone Vinyl Chloride Concentrations June 2021	Figure 2-12
--	---	-----------------------

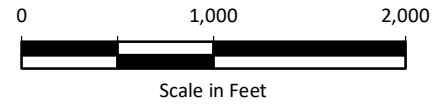
G:\Projects\025116411801\301\Draft\Cleanup Action Plan\F02-12\VC\Cune2021.mxd 1/4/2022





- Notes**
1. All concentrations shown in micrograms per liter (µg/L)
 2. <0.2 = Compound not detected at indicated reporting limit.
 3. Monitoring well results are the most recent.
 4. Black well and boring symbols indicate locations where the compound was detected. Gray well and boring symbols indicate locations where the compound was not detected.
 5. Multilevel wells have multiple channels. Channel designations are included in the well ID (e.g., AGW208-2).
 6. Wells with no results shown are no longer sampled.
 7. Black and white reproduction of this color original may reduce its effectiveness and lead to incorrect interpretation.

- Legend**
- Monitoring Well Location
 - Historical Borehole Grab Sample Location
 - Non-Detect or No Longer Sampled
 - Vinyl Chloride Contour (≥2.0 µg/L)
 - Vinyl Chloride Contour (≥0.29 µg/L)
 - Vinyl Chloride Contour (≥0.020 µg/L)
 - ▬ City Limits
 - ▬ Boeing Property
 - Wetland Areas
 - Water Bodies
 - ▬ Waterways



Data Source: King County GIS.

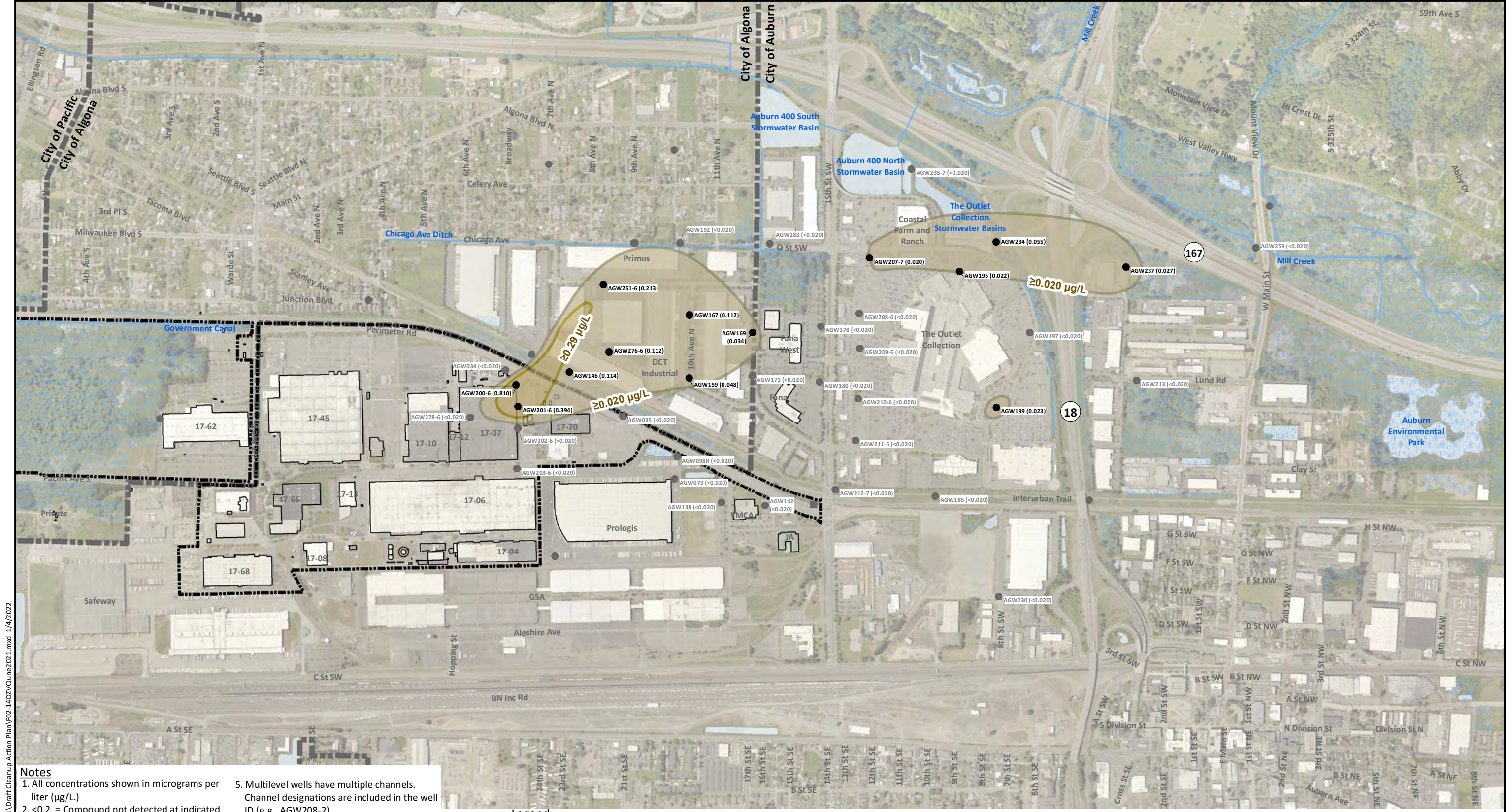
Boeing Auburn
Cleanup Action Plan
Auburn, Washington

AOC A-14: Intermediate Zone
Vinyl Chloride Concentrations
June 2021

Figure
2-13

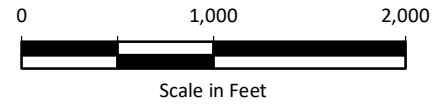
G:\Projects\025116411801\301\Draft Cleanup Action Plan\F02-13\ZVCJune2021.mxd 1/4/2022





- Notes**
1. All concentrations shown in micrograms per liter (µg/L).
 2. <0.2 = Compound not detected at indicated reporting limit.
 3. Monitoring well results are the most recent.
 4. Black well and boring symbols indicate locations where the compound was detected. Gray well and boring symbols indicate locations where the compound was not detected.
 5. Multilevel wells have multiple channels. Channel designations are included in the well ID (e.g., AGW208-2).
 6. Wells with no results shown are no longer sampled.
 7. Black and white reproduction of this color original may reduce its effectiveness and lead to incorrect interpretation.

- Legend**
- Monitoring Well Location
 - Historical Borehole Grab Sample Location
 - Non-Detect or No Longer Sampled
 - Vinyl Chloride Contour (≥2.0 µg/L)
 - Vinyl Chloride Contour (≥0.29 µg/L)
 - Vinyl Chloride Contour (≥0.020 µg/L)
 - ▬ City Limits
 - ▬ Boeing Property
 - Wetland Areas
 - Water Bodies
 - ▬ Waterways



Data Source: King County GIS.

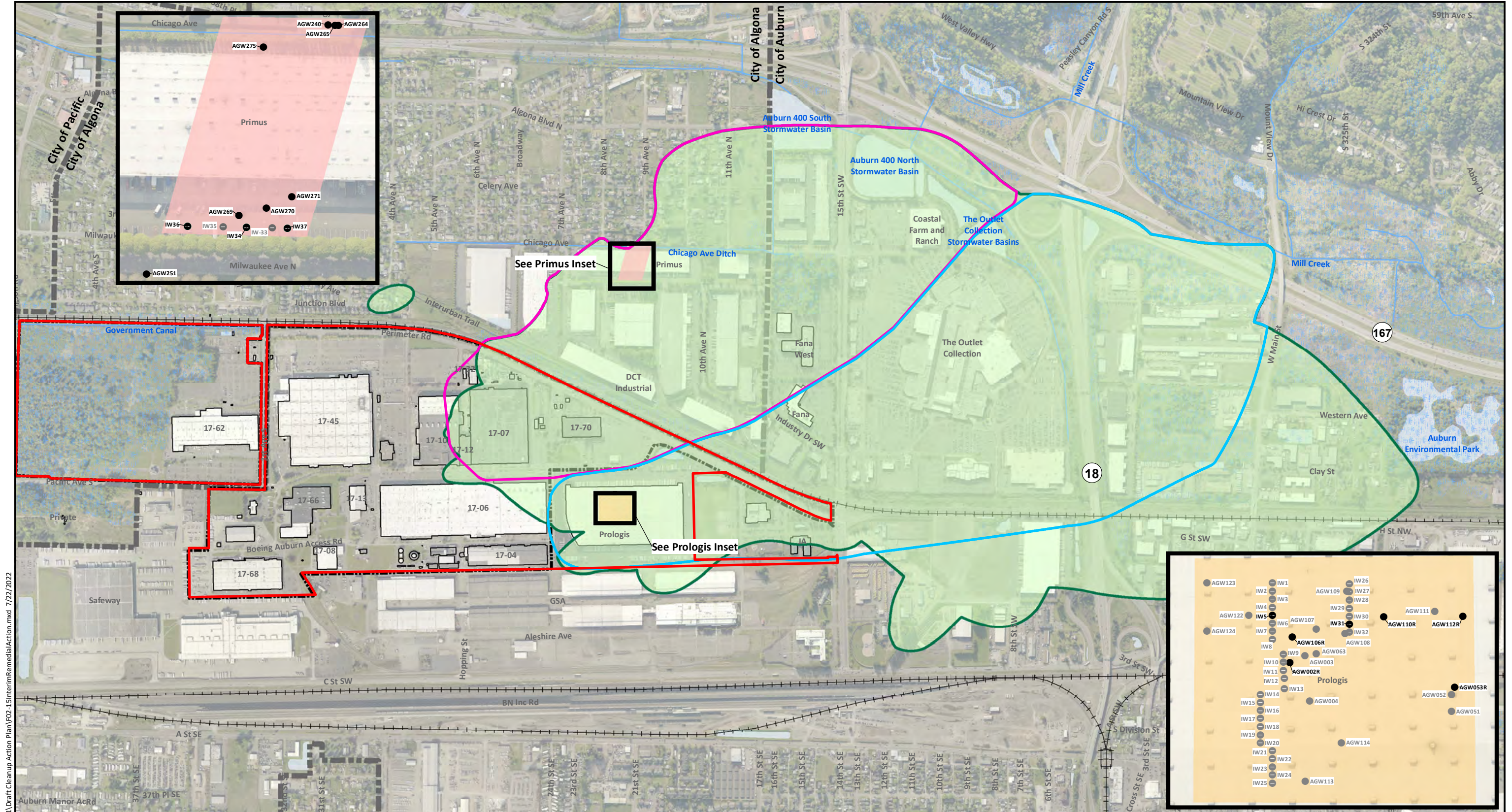
Boeing Auburn
Cleanup Action Plan
Auburn, Washington

AOC A-14: Deep Zone
Vinyl Chloride Concentrations
June 2021

Figure
2-14

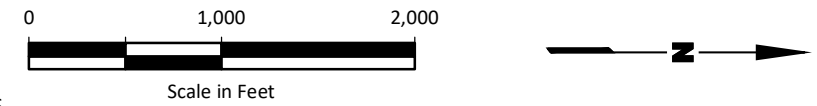
G:\Projects\02511641301\Draft Cleanup Action Plan\F02-14DZV\Cune2021.mxd 1/4/2022





Notes
 1. The current monitoring well network is shown.
 2. Black and white reproduction of this color original may reduce its effectiveness and lead to incorrect interpretation.

- Legend**
- Monitoring Well
 - Injection Well
 - Injection Well (Decommissioned)
 - Monitoring Well (Decommissioned)
 - Pore Water Sample Location
 - Area 1 Plume
 - Western Plume
 - TCE/VC Plume Extent - June 2021
 - Area 1 IRA
 - Pilot Test Area
 - City Limits
 - Boeing Auburn Facility Boundary
 - Boeing Property
 - Wetland Areas
 - Water Bodies
 - Waterways

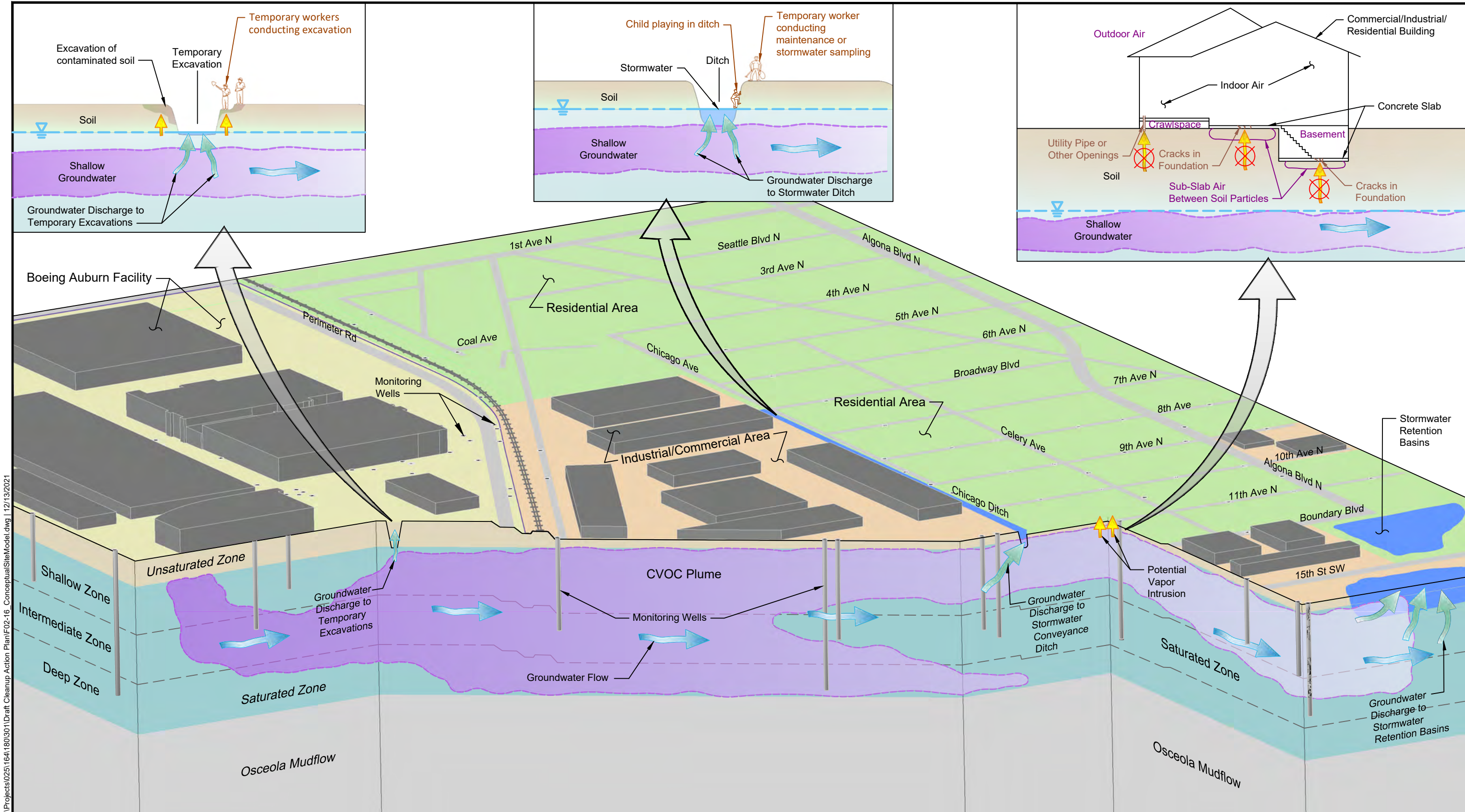


Data Source: King County GIS.

Boeing Auburn Cleanup Action Plan Auburn, Washington	Locations of Interim Remedial Action and Enhanced In Situ Bioremediation Pilot Test	Figure 2-15
--	--	-----------------------

G:\Projects\025\164\180\301\Draft Cleanup Action Plan\F02-15\InterimRemedialAction.mxd 7/22/2022





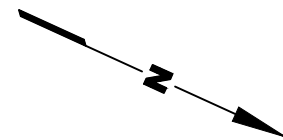
Landau Associates | C:\Projects\025116A\18013011\Draft Cleanup Action Plan\F02-16_ConceptualSiteModel.dwg | 12/13/2021

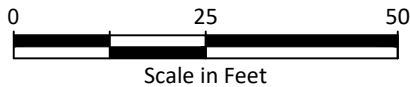
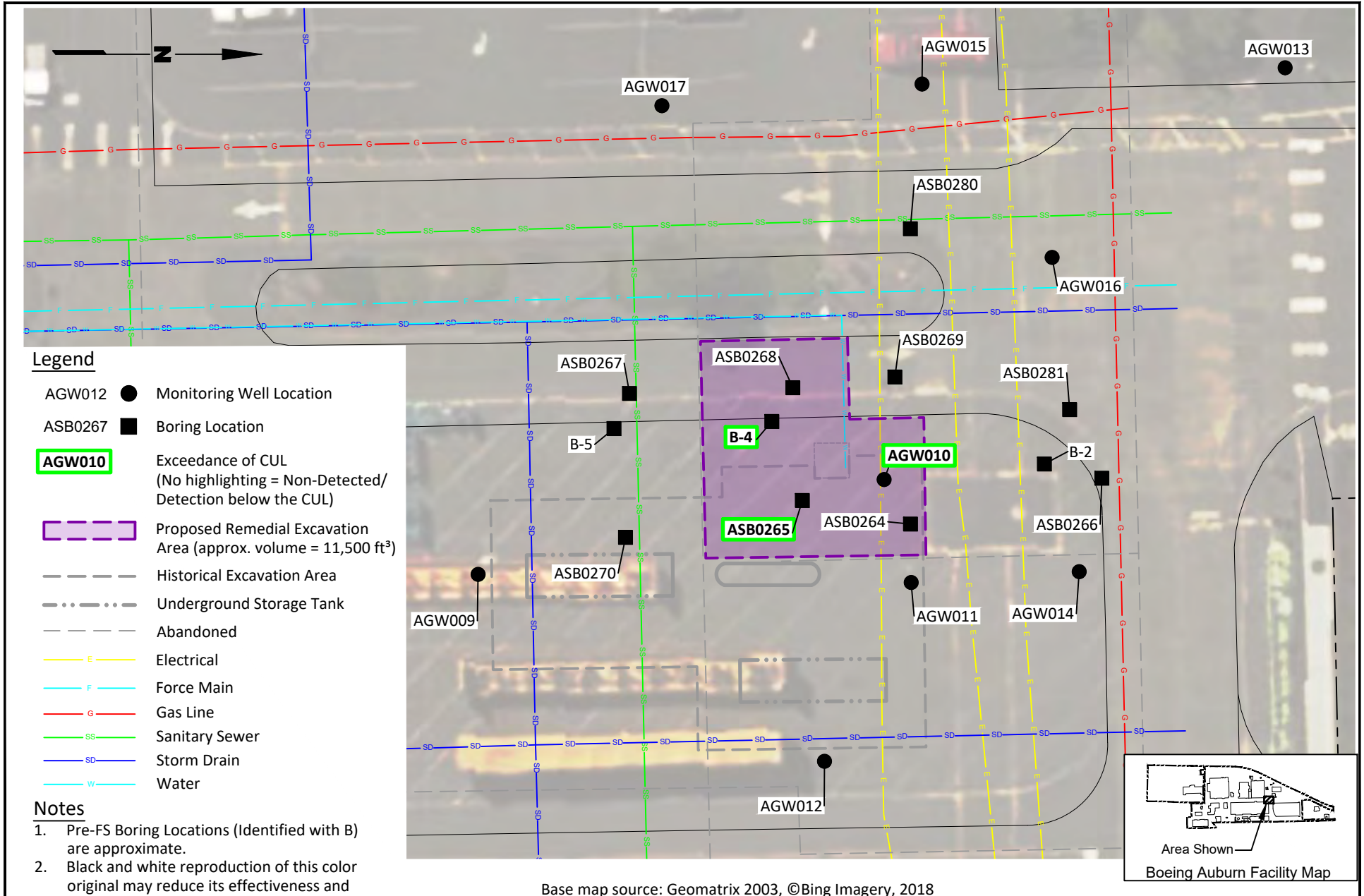
Legend

- Groundwater Flow
- Stormwater/Surface Water Discharge
- Potential Vapor Migration/Intrusion
- Incomplete exposure pathway based on RI/FS data

Notes

1. Not to scale.
 2. Black and white reproduction of this color original may reduce its effectiveness and lead to incorrect interpretation.
- CVOC = chlorinated volatile organic compounds





Boeing Auburn
Cleanup Action Plan
Auburn, Washington

AOC A-01: Conceptual Excavation Area

Figure
5-1

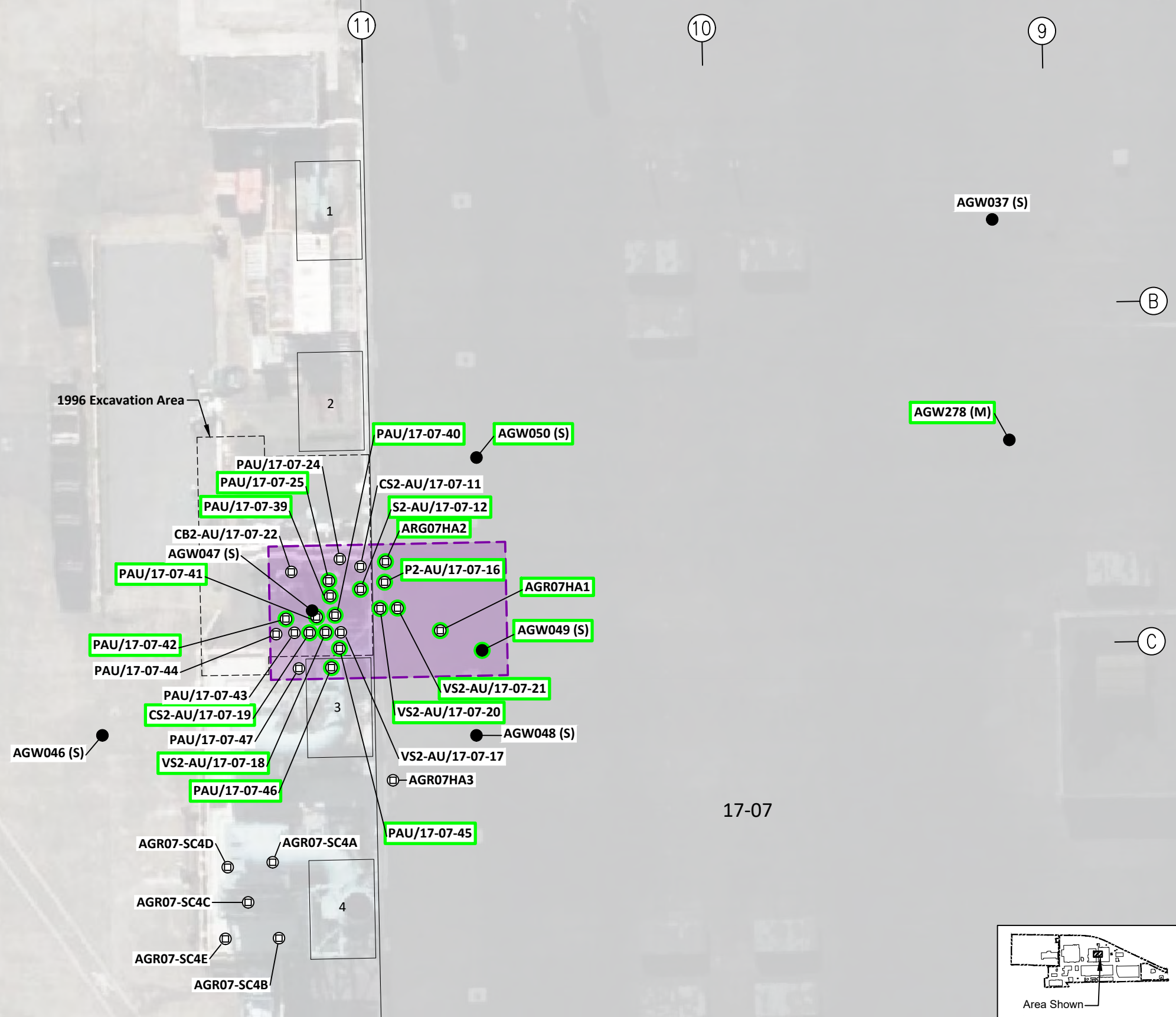
Landau Associates | G:\Projects\025\164\180\301\Draft Cleanup Action Plan\F05-02_A-09_excavation.dwg | 1/6/2022 5:14 PM | EZICK

Legend

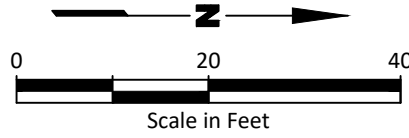
- AGW016 ● Monitoring Well Location
- AGR07HA1 ⊕ Pre-RI Grab Sample Location (Locations are Approximate)
- AGW010 Exceedance of CUL (No highlighting = Non-Detected/ Detection below the CUL)
- Proposed Remedial Excavation Area (approx. volume = 9,200 ft³)
- ⊕ ● = Highlighted symbol identifies where soil contamination above CULs was left in place.
- 1 Scrubber
- 17-07 Current Building and Number
- B 11 Building 17-07 Column Designations

Notes

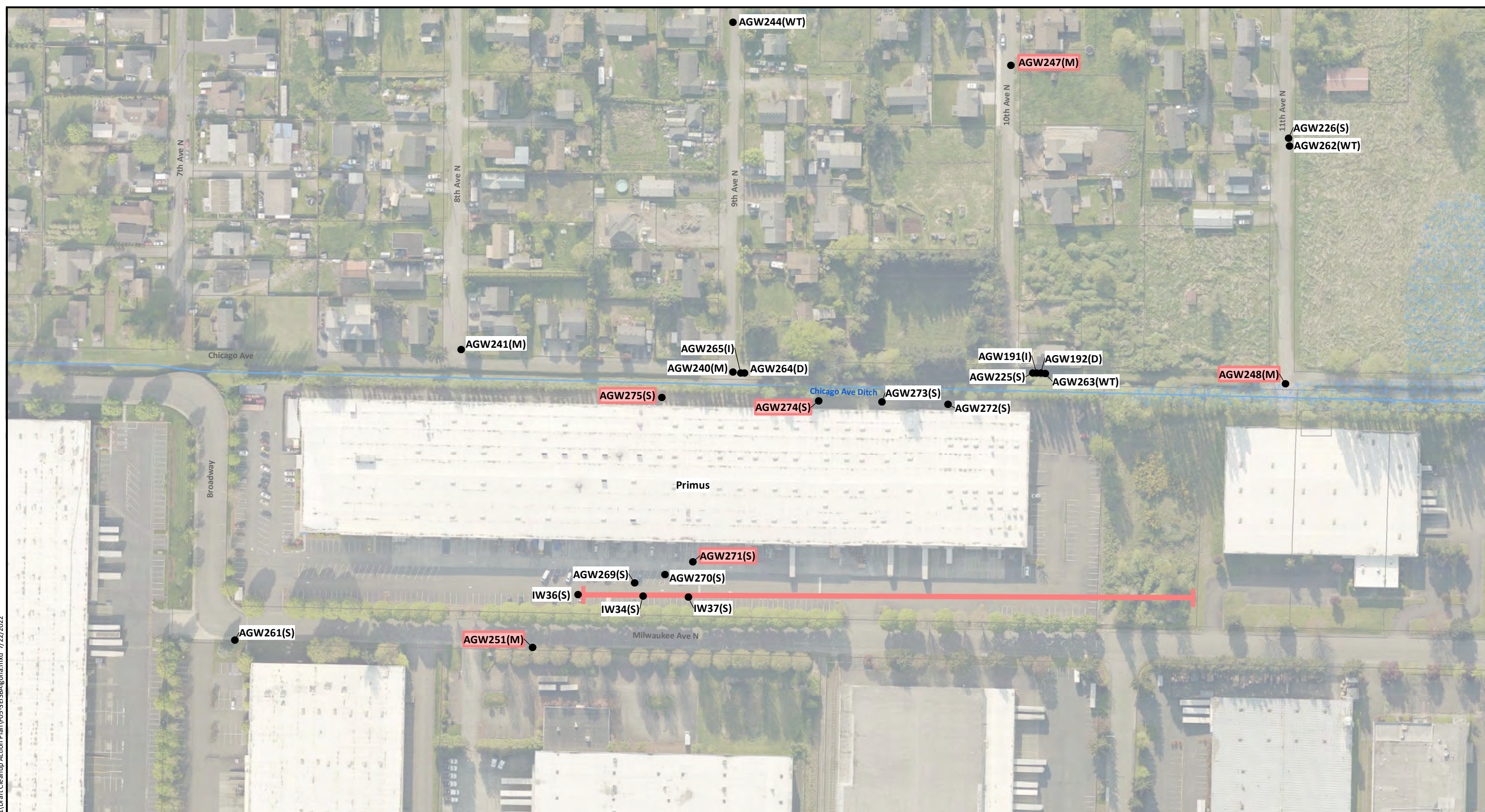
1. Groundwater wells are identified by the AGW prefix. The designations behind the identifications indicate the zone. (S) = shallow zone, (I) = intermediate zone, (D) = deep zone, (M) = multi-level well; screens in multiple groundwater zones.
2. Black and white reproduction of this color original may reduce its effectiveness and lead to incorrect interpretation.



Sources: AGI Technologies, Figure 4, 1996; ©Bing, 2019

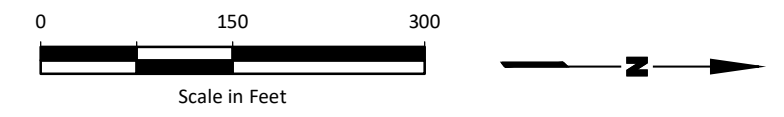


G:\Projects\025\164\180\30\1\Draft Cleanup Action Plan\F05-3EISBA\Alguna.mxd 7/22/2022



- Notes**
1. Black and white reproduction of this color original may reduce its effectiveness and lead to incorrect interpretation.
 2. The designations behind the well identifications indicate the zone.
 (WT) = water table
 (S) = shallow zone (water table to 35 ft bgs)
 (I) = intermediate zone (35 to 75 ft bgs)
 (D) = deep zone (75 to 100 ft bgs).

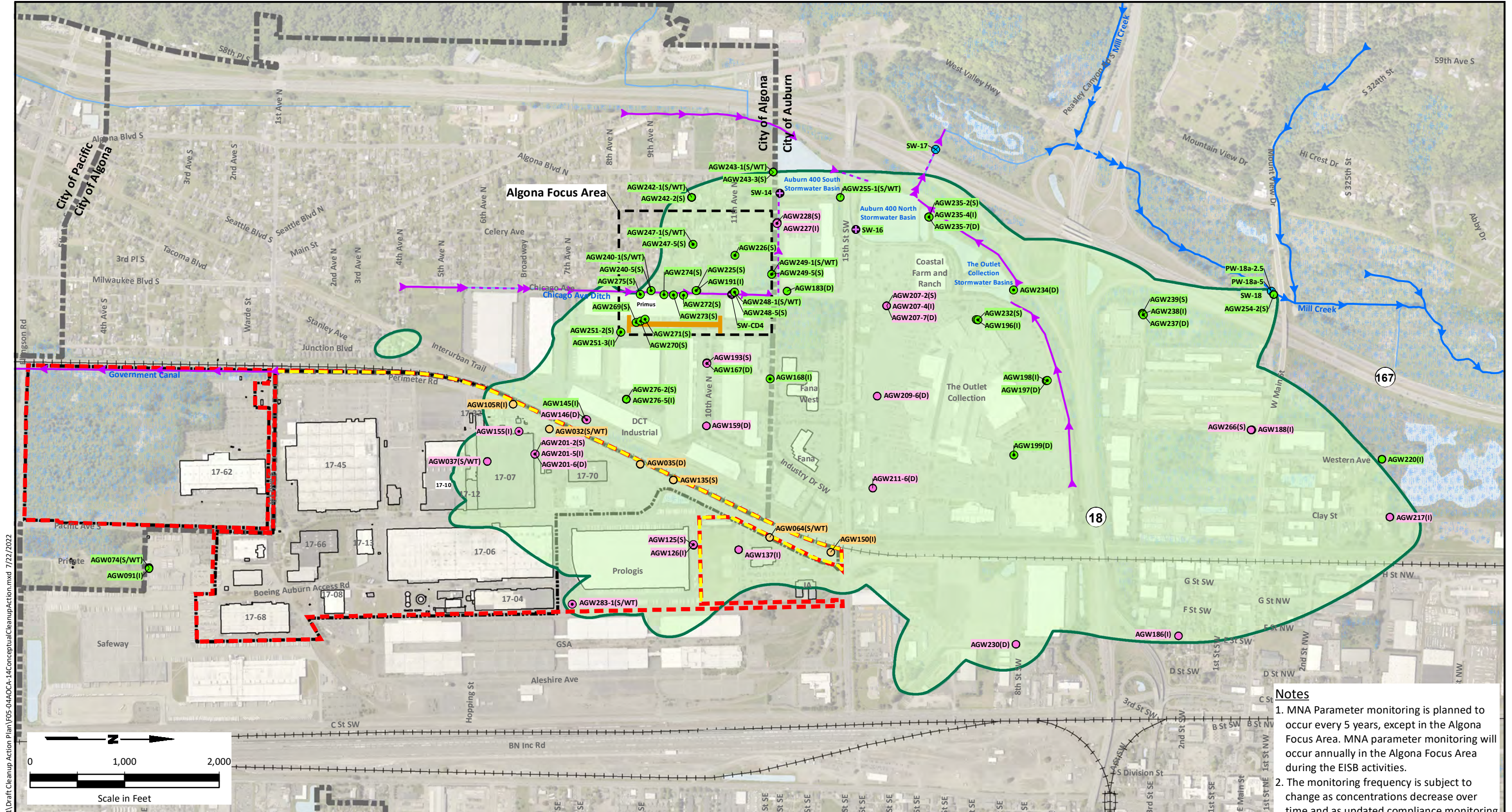
- Legend**
- Monitoring Well
 - Wetland Areas
 - Water Bodies
 - Waterways
 - H Algona Injection Row
 - AGW251 Conceptual EISB Monitoring Location



Data Source: King County GIS.

Boeing Auburn Cleanup Action Plan Auburn, Washington	AOC A-14: Conceptual EISB Algona Focus Area	Figure 5-3
--	--	----------------------





G:\Projects\025\164\180\301\Draft\Cleanup Action Plan\F05-04A\OCA-14\Conceptual\CleanupAction.mxd 7/22/2022

- Notes**
1. MNA Parameter monitoring is planned to occur every 5 years, except in the Algona Focus Area. MNA parameter monitoring will occur annually in the Algona Focus Area during the EISB activities.
 2. The monitoring frequency is subject to change as concentrations decrease over time and as updated compliance monitoring plans are approved by Ecology.
 3. Black and white reproduction of this color original may reduce its effectiveness and lead to incorrect interpretation.

Legend

- Monitoring Well Proposed for Long-Term VOC Monitoring
- ⊙ Monitoring Well Proposed for Long-Term VOC and MNA Parameter Monitoring
- ⊕ Stormwater Sample Location Proposed for Long-Term VOC Monitoring
- ⊗ Surface Water Sample Location Proposed for Long-Term VOC Monitoring

Sampling Frequency

- Annual
- Every 2 Years
- Every 5 Years

- ▭ TCE/VC Plume Extent - June 2021
- ▭ City Limits
- ▭ Boeing Property
- ▭ Wetland Areas
- ▭ Water Bodies
- ▭ Waterways

- ▬ Open Surface Water Waterway
- ▬ Open Stormwater Waterway
- ▬ Piped Surface Water Waterway
- ▬ Piped Stormwater Waterway
- ▬ Algona Focus Area Conceptual Enhanced In Situ Bioremediation (EISB) Injection Row

- ▭ Boeing Auburn Facility Boundary
- ▭ Boeing Auburn Facility Boundary Conditional Point of Compliance

Data Source: King County GIS.

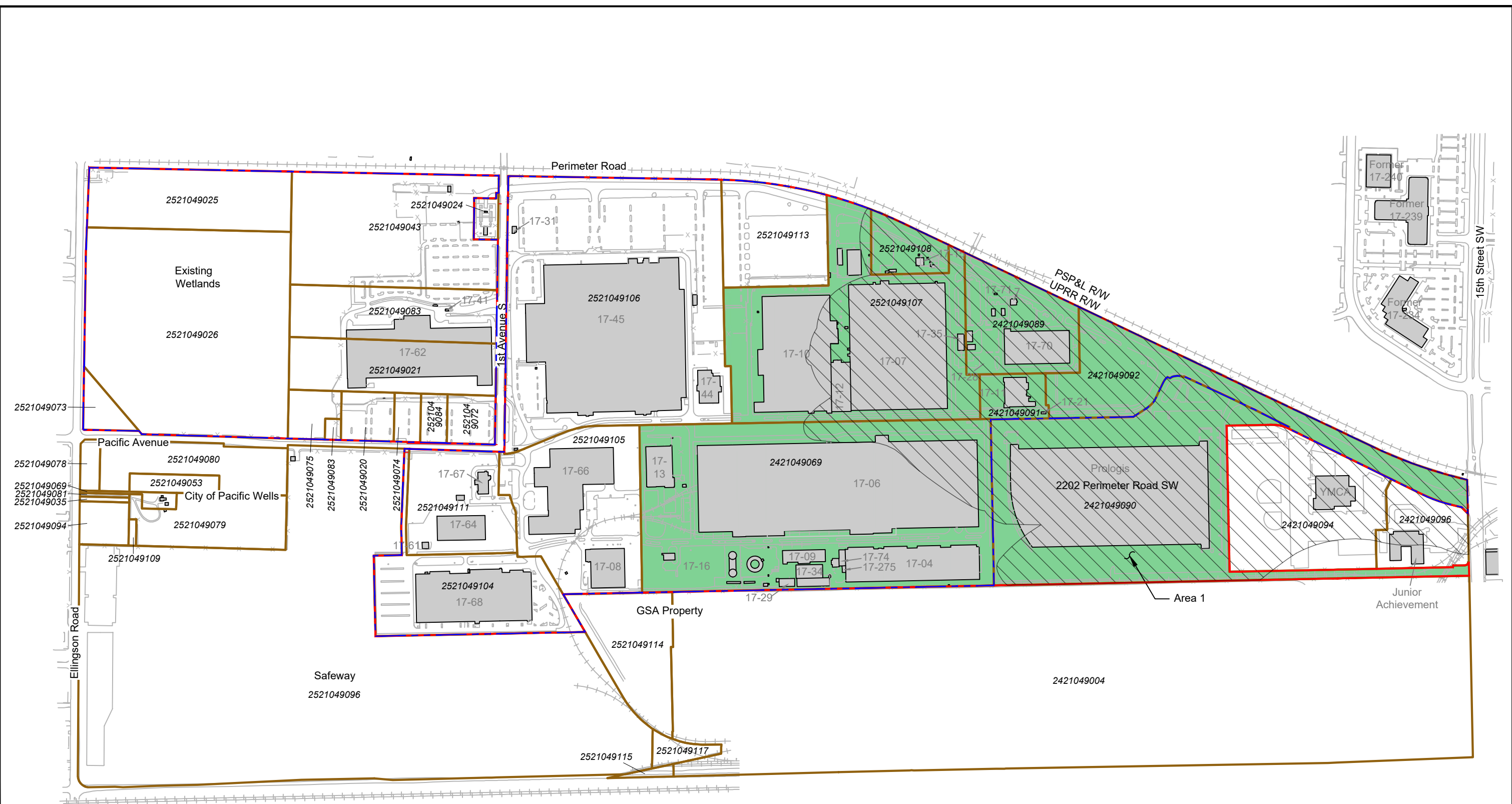
Boeing Auburn
Cleanup Action Plan
Auburn, Washington

**AOC A-14: Conceptual Cleanup Action
(Monitored Natural Attenuation and
Algona Focus Area EISB)**

Figure
5-4



Landau Associates | G:\Projects\025164180\301\Draft Cleanup Action Plan\F06-01 Facility RC Area.dwg | 7/22/2022 | Jeff Valluzzi



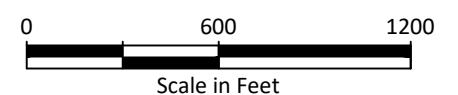
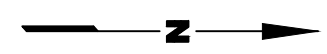
Legend

- A-01 Parcels where an Environmental Covenant will be Applied
- TCE/VC Plume Extent - June 2021
- 17-68 Current Building and Number
- Property Boundary
- Boeing Auburn Facility Boundary
- Parcel Boundary

Notes:

1. Specific restrictions and requirements will be defined in the Environmental Covenants.
2. Buildings formerly identified as 17-234, 17-239, and 17-240 are currently owned by Fana.
3. Black and white reproduction of this color original may reduce its effectiveness and lead to incorrect interpretation.

Base map source: Geomatrix 2003



Boeing Auburn Cleanup Action Area Auburn, Washington	Conceptual Boeing Auburn Facility Environmental Covenant Area	Figure 6-1
--	--	-----------------------