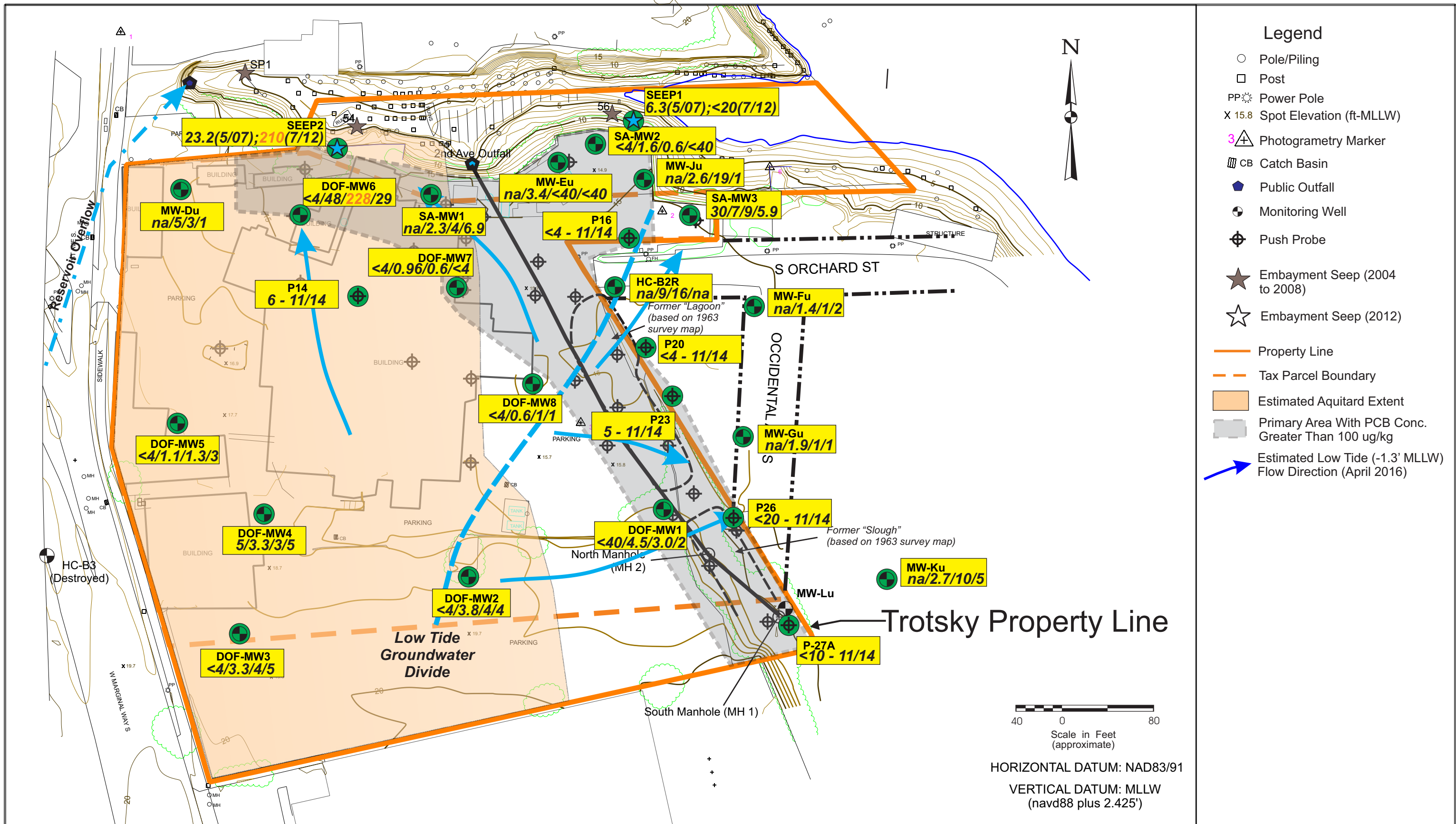


<ul style="list-style-type: none"> ● Concentration ≤ Screening Level (SL=81 ug/l) ● Concentration > Screening Level (SL=81 ug/l) 	<p>2.0/5.3/6.0/2.0 Concentration - ug/l (11-2012/11-2015/3-2016/9-2016)</p> <p>na - Not Available</p>
--	---

ICS/NW Cooperage Site		FIGURE 5-30a
Dissolved Zinc Concentrations Water Table Zone Above Aquitard		
SUM-008-00 (ICS)	Mar. 2018	
<i>Dalton, Olmsted & Fuglevand, Inc.</i>		

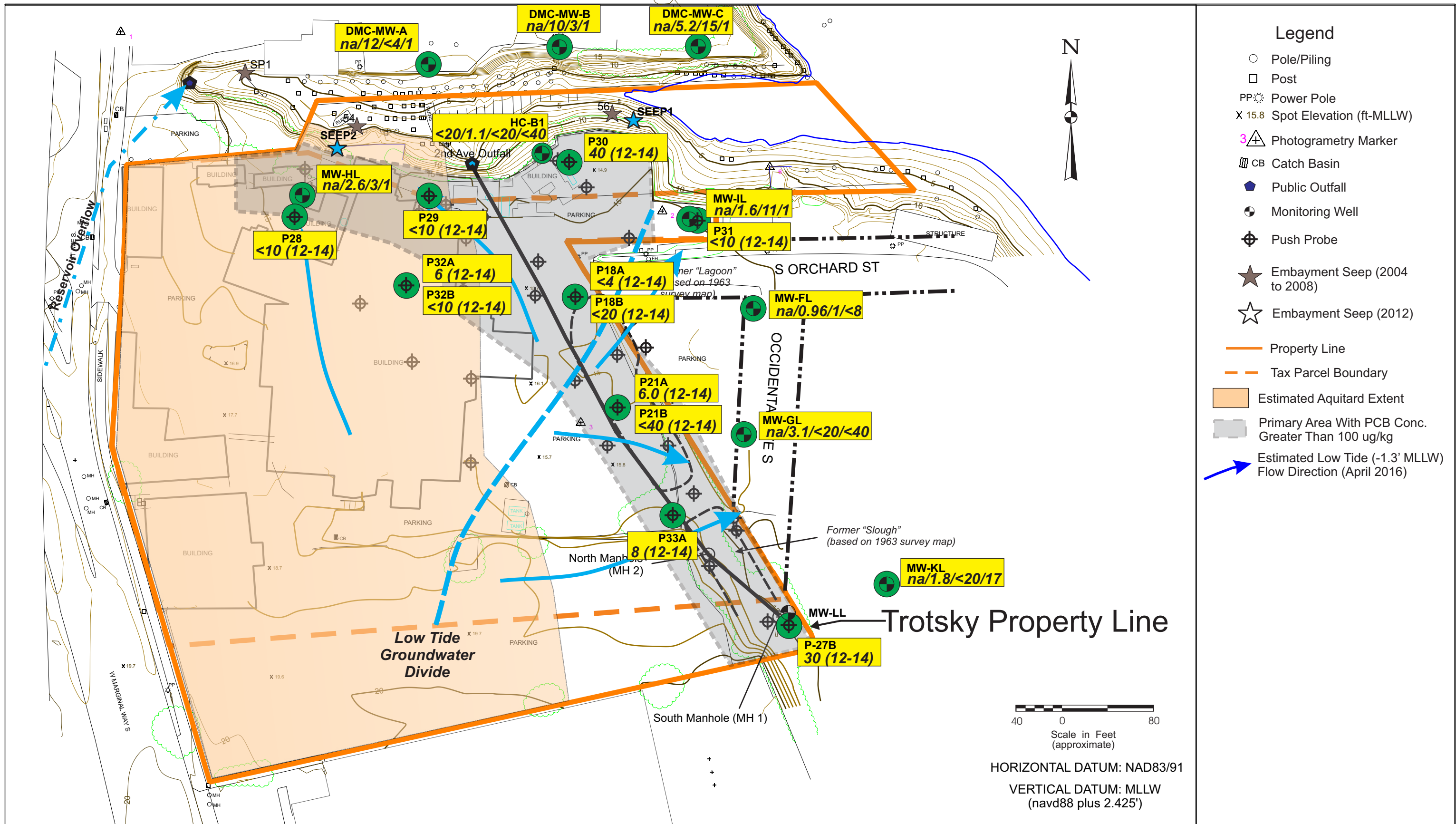
Ref: DZinc GW Plot R1-R3rev.cdr



● Concentration ≤ Screening Level (SL=81 ug/l) 2.0/5.3/6.0/2.0 Concentration - ug/l (11-2012/11-2015/3-2016/9-2016)
● Concentration > Screening Level (SL=81 ug/l) na - Not Available

ICS/NW Cooperage Site		FIGURE 5-30b
Dissolved Zinc Concentrations Upper Zone		
SUM-008-00 (ICS)	Mar. 2018	
<i>Dalton, Olmsted & Fuglevand, Inc.</i>		

Ref: DZinc GW Plot R1-R3rev.cdr



- ### Legend
- Pole/Piling
 - Post
 - PP Power Pole
 - X 15.8 Spot Elevation (ft-MLLW)
 - 3+ Photogrammetry Marker
 - CB Catch Basin
 - Public Outfall
 - Monitoring Well
 - Push Probe
 - ★ Embayment Seep (2004 to 2008)
 - ☆ Embayment Seep (2012)
 - Property Line
 - Tax Parcel Boundary
 - Estimated Aquitard Extent
 - Primary Area With PCB Conc. Greater Than 100 ug/kg
 - Estimated Low Tide (-1.3' MLLW) Flow Direction (April 2016)

40 0 80
Scale in Feet (approximate)

HORIZONTAL DATUM: NAD83/91
VERTICAL DATUM: MLLW (navd88 plus 2.425')

● Concentration ≤ Screening Level (SL=81 ug/l) 2.0/5.3/6.0/2.0 Concentration - ug/l (11-2012/11-2015/3-2016/9-2016)
● Concentration > Screening Level (SL=81 ug/l) na - Not Available

ICS/NW Cooperage Site
Dissolved Zinc Concentrations
Lower Zone
 SUM-008-00 (ICS) Mar. 2018
Dalton, Olmsted & Fuglevand, Inc.

FIGURE 5-30c

