



Public Participation Plan

**Boeing Kent Space Center
20403 68th Ave S
Kent, WA, 98032**

Hazardous Waste and Toxics Reduction Program

Washington State Department of Ecology
Northwest Regional Office
Shoreline, Washington

Revised February 2023, Publication 22-04-040



Publication Information

This plan is available:

- On the Department of Ecology's website at <https://apps.ecology.wa.gov/publications/SummaryPages/2204040.html>.
- At our [Document Repository for Boeing Kent Space Center](#).¹

Cover photo

Photo by Todd A. Swoboda, PE, project manager for Boeing Kent Space Center.

Related Information

- Facility site ID: 2099
- Cleanup site ID: 12671

Contact Information

Washington State Department of Ecology

Hazardous Waste and Toxics Reduction Program
Northwest Regional Office
P.O. Box 330316
Shoreline, WA 98133

Janelle Anderson

Community Outreach Specialist

Telephone: 425-301-6454

email: janelle.anderson@ecy.wa.gov

Li Ma

Site Manager

Telephone 425-466-9872

email: li.ma@ecy.wa.gov

Website: [Washington State Department of Ecology](#)²

¹ <https://ecology.wa.gov/Boeing-Kent>

² www.ecology.wa.gov/contact

Español

El Departamento de Ecología está anunciando el período de comentarios públicos relacionado a la limpieza ambiental del sitio Boeing Kent Space Center. Para obtener este documento, o más información sobre este sitio en español, favor de comunicarse con Janelle Anderson al 360-301-6454 o janelle.anderson@ecy.wa.gov.

한국어

주 환경부는 보잉 켄트 스페이스 센터 환경 정화와 관련된 공개 논평 기간을 공지합니다. 한국어로 된 문서나, 이 현장에 대한 한국어 정보를 원하시면 담당자 (Jintae Lee: 360-890-5596, jintae.lee@ecy.wa.gov) 에게 연락하십시오.

Tiếng Việt

Bộ Môi Sinh (Ecology) đang công bố thời gian lấy ý kiến công chúng liên quan đến việc tẩy nhiễm môi trường tại địa điểm Boeing Kent Space Center. Để truy cập tài liệu này bằng tiếng Việt, hoặc để biết thêm thông tin về địa điểm này bằng tiếng Việt, vui lòng liên lạc Liêm Nguyễn tại 360-790-4730 hoặc email liem.nguyen@ecy.wa.gov.

中文

華盛頓州生態管理署宣布與 Boeing Kent Space Center 的環境清理工作有關的公眾意見徵詢期。如要本文檔的中文版，或了解更多關於本網站的中文版信息，請聯繫 Sunny Becker 撥打 425-457-3842 或發送電子郵件至 sunny.becker@ecy.wa.gov。

ADA Accessibility

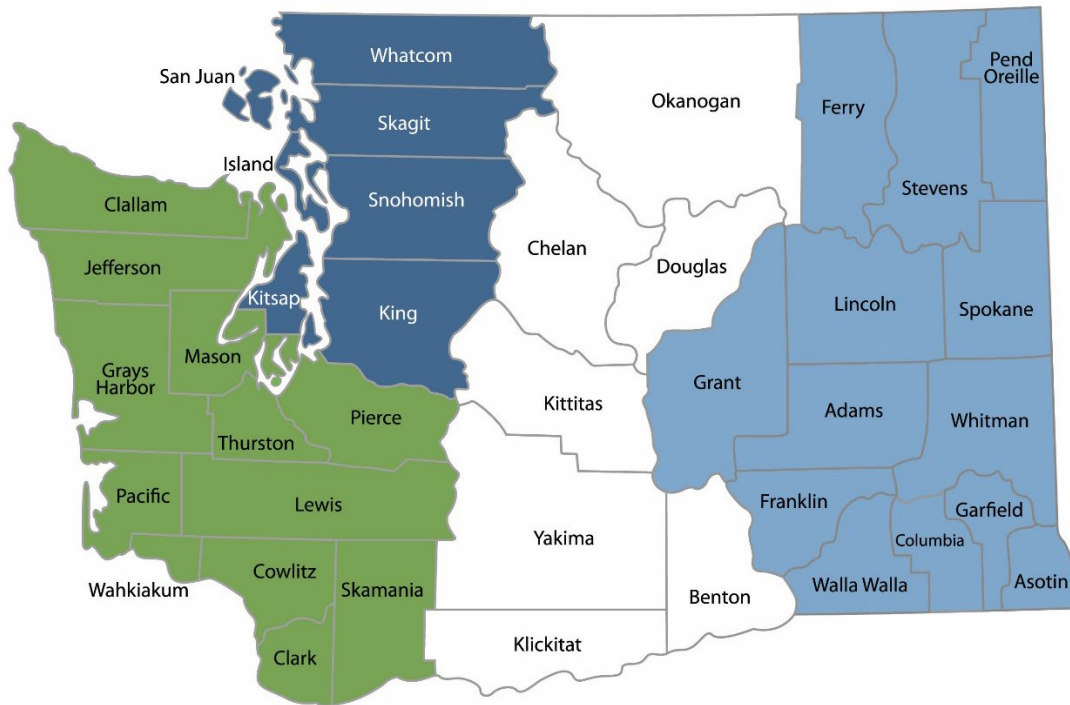
The Department of Ecology is committed to providing people with disabilities access to information and services by meeting or exceeding the requirements of the Americans with Disabilities Act (ADA), Section 504 and 508 of the Rehabilitation Act, and Washington State Policy #188.

To request an ADA accommodation, contact Ecology by phone at 360-407-6700 or email at hwtrpubs@ecy.wa.gov. For Washington Relay Service or TTY call 711 or 877-833-6341. Visit [Ecology's website](http://www.ecology.wa.gov)³ for more information.

³ www.ecology.wa.gov/accessibility

Department of Ecology's Region Offices

Map of Counties Served



Southwest Region 360-407-6300	Northwest Region 206-594-0000	Central Region 509-575-2490	Eastern Region 509-329-3400
---	---	---------------------------------------	---------------------------------------

Region	Counties served	Mailing Address	Phone
Southwest	Clallam, Clark, Cowlitz, Grays Harbor, Jefferson, Mason, Lewis, Pacific, Pierce, Skamania, Thurston, Wahkiakum	PO Box 47775 Olympia, WA 98504	360-407-6300
Northwest	Island, King, Kitsap, San Juan, Skagit, Snohomish, Whatcom	PO Box 330316 Shoreline, WA 98133	206-594-0000
Central	Benton, Chelan, Douglas, Kittitas, Klickitat, Okanogan, Yakima	1250 W Alder St Union Gap, WA 98903	509-575-2490
Eastern	Adams, Asotin, Columbia, Ferry, Franklin, Garfield, Grant, Lincoln, Pend Oreille, Spokane, Stevens, Walla Walla, Whitman	4601 N Monroe Spokane, WA 99205	509-329-3400
Headquarters	Across Washington	PO Box 46700 Olympia, WA 98504	360-407-6000

Public Participation Plan

**Boeing Kent Space Center
20403 68th Ave. S.
Kent, WA 98032**

Hazardous Waste & Toxics Reduction Program
Washington State Department of Ecology
Northwest Region Office
Shoreline, WA

Revised February 2023 | Publication 22-04-040



DEPARTMENT OF
ECOLOGY
State of Washington

Table of Contents

List of Figures	5
List of Tables	5
Public Involvement in Contamination Cleanup	6
Site contacts.....	6
Public Participation Grants	7
State and Federal Cleanup Laws.....	8
Model Toxics Control Act.....	8
Resource Conservation and Recovery Act.....	8
State Environmental Policy Act.....	9
Site Information	11
Land use	11
Contamination	12
Cleanup process.....	14
Area Community.....	16
Environmental Justice and Title VI.....	17
Public Participation Activities	21
How we share information with the community	21
How to share information with us.....	22
Americans with Disabilities Act.....	23
PPP Amendments.....	24
List of Abbreviations and Acronyms.....	25

List of Figures

Figure 1: Washington's formal cleanup process infographic.	10
Figure 2. Soil and groundwater sample locations at Boeing Kent Space Center.....	13
Figure 3: Formal cleanup process infographic (English)	14
Figure 4: Formal cleanup process infographic (Spanish)	14
Figure 5. Formal cleanup process infographic (Vietnamese)	15
Figure 6. Formal cleanup process infographic (Chinese).....	15
Figure 7: Google map of Kent, Washington.....	16
Figure 8: Google map of Boeing Kent Space Center in Kent, Washington.....	17
Figure 9: Environmental justice (EJ) demographic screening boundaries around Being Kent Space Center, from EPA's EJScreen mapping tool.....	19

List of Tables

Table 1. Study area: the people living within 3.14 square miles around the Boeing Kent facility (population 270).....	18
Table 2. List of abbreviations and acronyms.	25

Public Involvement in Contamination Cleanup

Ecology (we) developed this Public Participation Plan (PPP) in cooperation with Boeing. This plan is for their facility located at 20403 68th Ave S., in Kent, Washington.

The PPP describes how we involve the public in investigating contamination and selecting cleanup activities during the corrective action process.

We encourage the public to:

- Learn about and get involved in decision-making opportunities.
- Provide input during the investigation and cleanup of contamination.

This plan is for corrective action (cleanup). Public participation activities are coordinated between Boeing and Ecology. We must make sure the cleanup and the outreach comply with Washington State's Dangerous Waste Regulations and Model Toxics Control Act (MTCA) requirements. We will hold public comment periods and other public outreach during the cleanup process.

Site contacts

To be included in the site record, comments about the cleanup process must be submitted during comment periods. Questions and informal comments or information about the site's history are welcome anytime.

Ecology

Washington State Department of Ecology
Northwest Region Office
P.O. Box 330316
Shoreline, WA 98133

Li Ma
Site Manager
li.ma@ecy.wa.gov
425-466-9872

Janelle Anderson
Community Outreach Specialist
janelle.anderson@ecy.wa.gov
425-301-6454

Potentially Liable Party (PLP)

Nick Garson, P.G., *Boeing Project Manager*
Global Enterprise Sustainability
Remediation Group
P.O. Box 3707 MC 46-202
Seattle, WA 98124

Mobile: 425-269-7866
nick.garson@boeing.com

Public Participation Grants

Grants may be available to neighborhood committees, nonprofits, and other groups. For contaminated sites, these funds can be used to:

- Hire an expert to help interpret technical information.⁴
- Conduct activities to increase understanding and participation in the cleanup process.

For more information about public participation grants, please contact Faith Wimberley at 425-275-7285 or faith.wimberley@ecy.wa.gov. You may also visit the [Public Participation Grant webpage](#).⁵

⁴ Ecology currently does not have a citizen technical advisor for providing technical assistance to citizens on issues related to the investigation and cleanup of the site.

⁵ www.ecology.wa.gov/ppg

State and Federal Cleanup Laws

In Washington State, we use MTCA and other regulations for cleanup activities on properties that treated, stored, or disposed of hazardous wastes. These cleanups, called **corrective actions**, are required under the federal Resource Conservation and Recovery Act (RCRA). The U.S. Environmental Protection Agency (EPA) sets and enforces environmental standards in the United States. EPA allows Ecology to use MTCA, not RCRA, for cleanups in Washington State.

This PPP is required under MTCA. MTCA sets standards to ensure contaminated site cleanups in our state protect human health and the environment.

Model Toxics Control Act

MTCA began as a grassroots citizens' initiative in 1988. We started using it in our state to clean up contaminated sites in 1989. Under MTCA, a current or past property owner or operator may need to pay to clean up contamination, until levels are safe for human health and the environment. The contamination may be on their property or coming from their property.

Under MTCA, we oversee cleanups and issue [regulations and guidance](#)⁶ for them. We look into reports of property contamination. If the contamination is a threat to human health or the environment, the property is put on the Hazardous Sites List and the cleanup process begins.

Public participation is an important part of the MTCA process. Participation needs are determined for each cleanup site by the level of public interest and the risk posed by the contamination. People who live near the site, community groups, businesses, government entities, and other interested parties can comment on the cleanup process.

Under MTCA, the cleanup process happens in phases. Many of the phases have time for the public to review and comment on cleanup documents. See Figure 1, Washington's Formal Cleanup Process, for more information.

Resource Conservation and Recovery Act

There are federal and state rules about hazardous wastes. Congress passed RCRA in 1976 to ensure safe management and disposal of hazardous waste. RCRA was updated several times to expand its scope and requirements.

RCRA's goals are to:

- Protect human health and the environment.
- Reduce waste and conserve energy and natural resources.
- Reduce or stop hazardous waste generation.

⁶ <https://apps.ecology.wa.gov/publications/publications/9406.pdf>

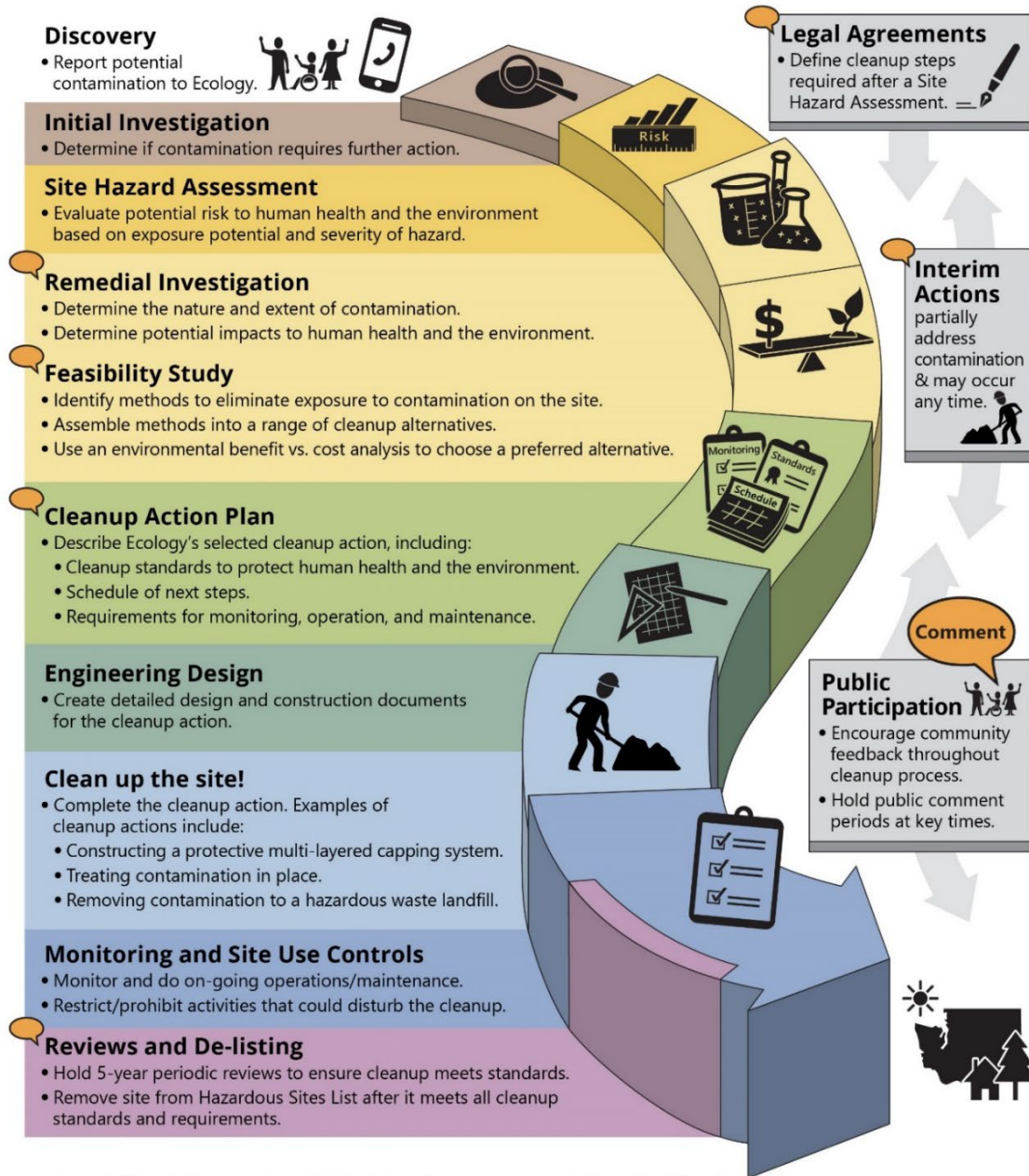
Treatment, storage, and disposal (TSD) facilities must have a permit to design, operate, maintain, or close their site. RCRA also requires facilities to clean up contamination from past and present practices. These cleanup activities are called **corrective actions**.

Federal RCRA and state dangerous waste regulations require opportunities for public participation during the stages of facility permitting and cleanup.

State Environmental Policy Act

The State Environmental Policy Act (SEPA) is followed during review and development of cleanup plans. Ecology uses SEPA during site cleanups to find and evaluate negative environmental impacts that could result from a proposed action.

Washington's Formal Cleanup Process



Washington's Cleanup Law
Model Toxics Control Act (MTCA)

MTCA defines the cleanup process. This public-initiated environmental law directs upland cleanups (on land or in groundwater) and sediment cleanups (in freshwater or marine environments). Ecology enacts MTCA and regulates the cleanup process.

September 2019
Ecology Publication 19-09-166

Figure 1: [Washington's formal cleanup process infographic.](#)⁷

[Read a plain text version of Figure 1.](#)⁸

⁷ <https://apps.ecology.wa.gov/publications/SummaryPages/1909166.html>

⁸ <https://apps.ecology.wa.gov/publications/parts/1909166part2.pdf>

Site Information

Land use

Boeing Kent Space Center is located at 20403 68th Ave S. in Kent, Washington. Boeing conducts research and development at this facility, primarily for the Department of Defense. Other aerospace operations also occur here. Activities include:

- Electronic and electrical component manufacturing.
- Metal milling.
- Finishing and plating.
- Photographic processing.
- Other research and development in various laboratories.

Boeing has operated at this location since the 1960s. Facility activities allowed chemicals to spill or leak and contaminate soil and groundwater.

Boeing previously stored hazardous waste longer than 90 days at this site under a RCRA interim status permit, 40 CFR Part 265. Boeing decided not to seek final permit status. As a result, they can only store hazardous waste for up to 90 days. Even though they did not seek final permit status, Boeing must keep their permit active until they cleanup the site.

In 2016, Ecology and Boeing signed an Agreed Order that requires Boeing to conduct a Remedial Investigation (RI). We approved the RI work plan later that year.

Contamination

Contaminants detected in groundwater, soils, soil gas, stormwater, and/or surface water sediments at Boeing Kent Space Center include:

- Volatile organic compounds (VOCs), such as benzene and vinyl chloride (these solvents cause cancer).
- Petroleum hydrocarbons (the main parts of gasoline and oil).
- Semi-volatile organic compounds (SVOCs), including polycyclic aromatic hydrocarbons (or PAHs). These chemicals are formed when gasoline and trash are burned. They are suspected to cause cancer.
- PCBs (polychlorinated biphenyls), long-lasting chemicals formerly used in many industries. Health effects can include cancer and immune system damage. Read more about PCBs on the [EPA website](https://www.epa.gov/pcbs).⁹
- Toxic metals such as arsenic. Arsenic is naturally occurring and is mobilized by some forms of contamination. Arsenic is poisonous and regulated in public drinking water.

Contamination at this site is relatively low and most contaminants are below levels that pose a risk to human health or the environment. “Risk-based screening levels” are used to make sure that contamination that is a risk to human health or the environment is identified. On parts of this site, one contaminant, arsenic, has concentrations higher than the risk-based screening levels.

At this time, people are not being exposed to harmful levels of contamination. This is because groundwater at the site is not used for drinking water and Boeing controls access to their property. If contamination threatening human health or the environment is found, we will have Boeing take protective action.

Sampling results from the remedial investigation are contained in the 2022 Revised Boeing Kent Space RI Report. This report can be found on [Ecology's Boeing Kent Space Center website](https://www.ecology.wa.gov/cleanupsearch/site/12671)¹⁰ in the Documents section under Technical Reports. The locations that were investigated in 2017 and 2018 can be seen on the sampling site map in Figure 2.

⁹ <https://www.epa.gov/pcbs>

¹⁰ <https://apps.ecology.wa.gov/cleanupsearch/site/12671>

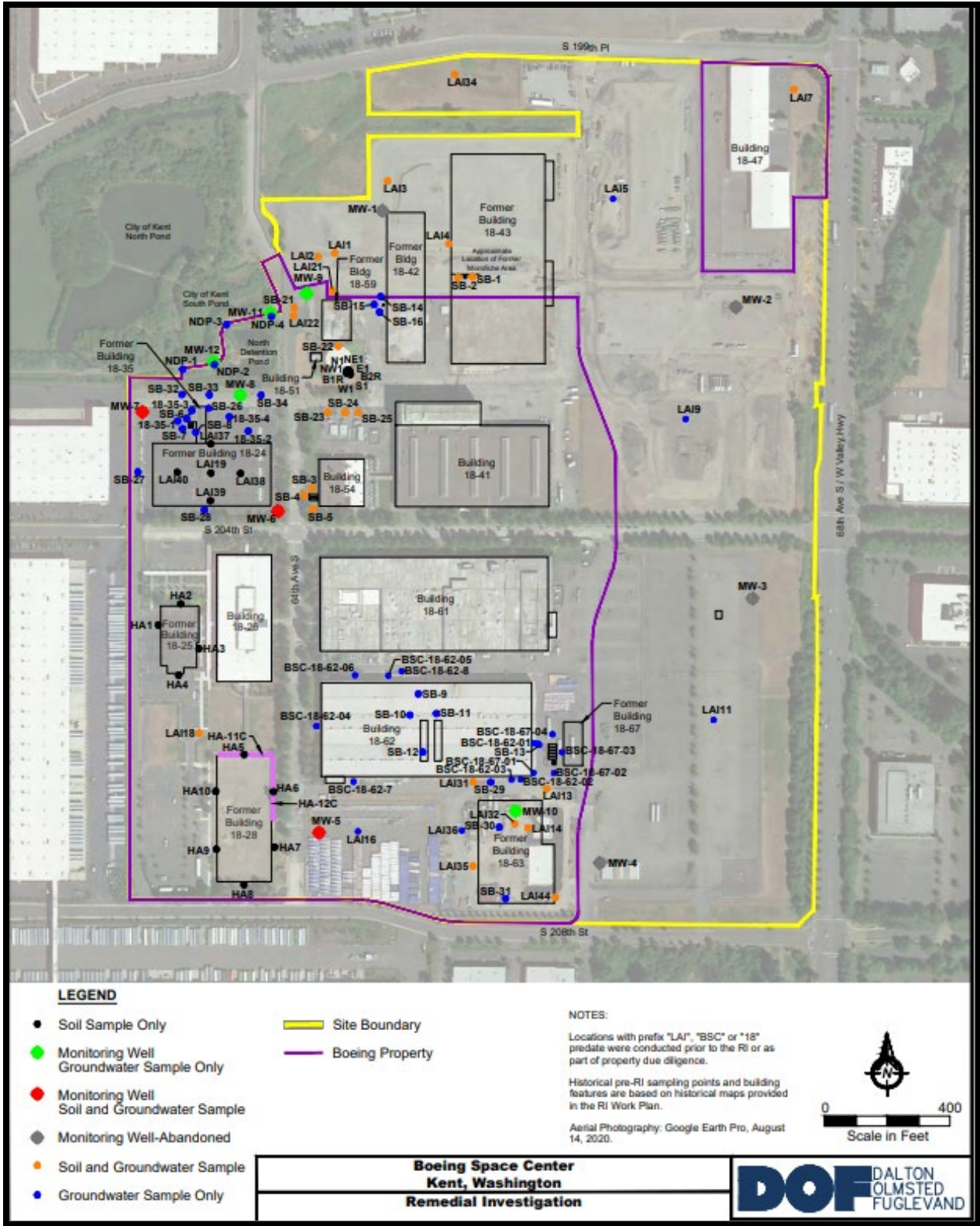


Figure 2. Soil and groundwater sample locations at Boeing Kent Space Center.

Cleanup process

Boeing must clean up the contamination at its Kent facility. There are six phases in the cleanup process: remedial investigation, feasibility study, cleanup plan, cleanup design, cleanup implementation, and monitoring and site use controls.

Interim actions or partial cleanups can occur at any time. There will be opportunities for public comment at each stage, except for cleanup implementation.

We apply both the Resource Conservation and Recovery Act (RCRA) and the Model Toxics Control Act (MTCA) regulations to clean up hazardous waste sites. The cleanup protects human health and the environment from dangerous wastes and chemicals.

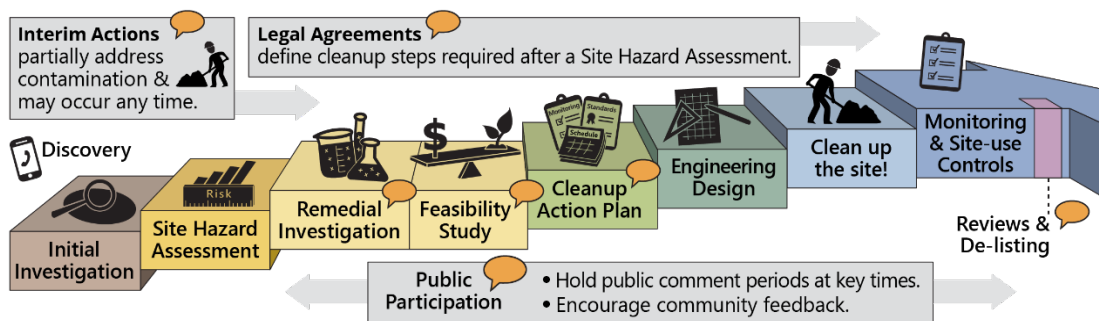


Figure 3: Formal cleanup process infographic (English)

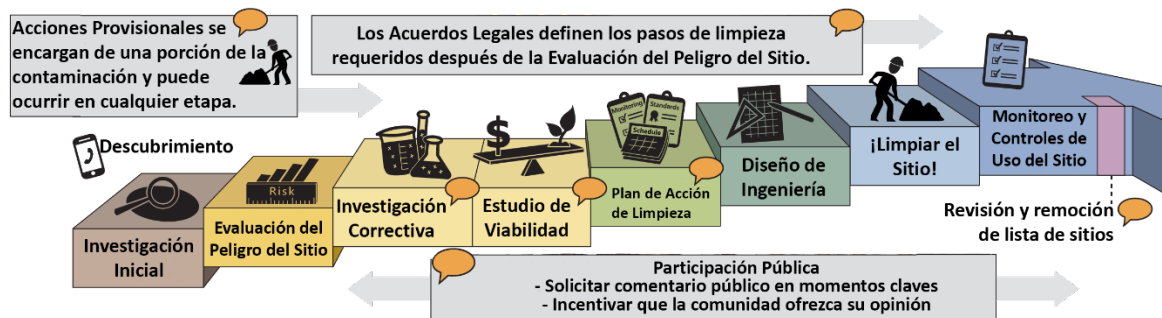


Figure 4: Formal cleanup process infographic (Spanish)



Figure 5. Formal cleanup process infographic (Vietnamese)

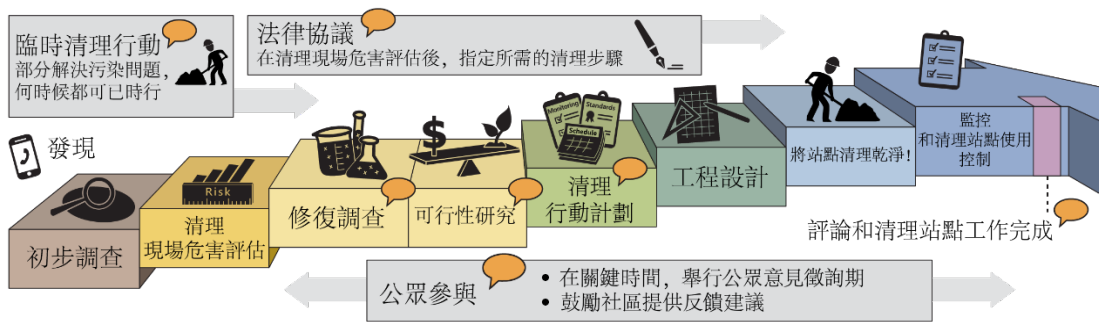


Figure 6. Formal cleanup process infographic (Chinese)

Area Community

Kent

Kent is located in King County, Washington, United States. It is the sixth largest city in the state and second oldest incorporated city after Seattle. Kent is in the heart of the Seattle–Tacoma metropolitan area, located 19 miles south of Seattle and 19 miles northeast of Tacoma (see Figure 7).

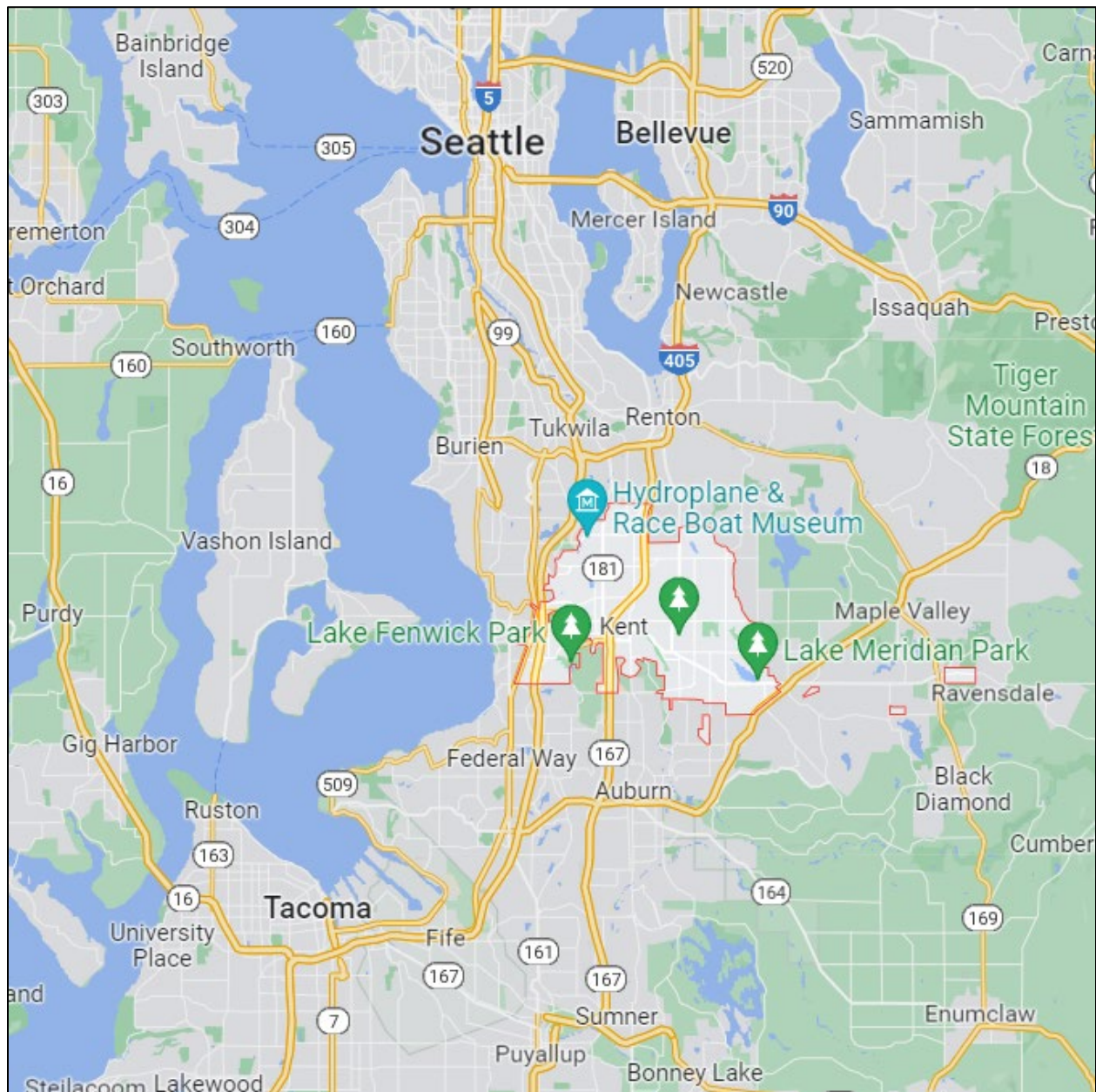


Figure 7: Google map of Kent, Washington.

Boeing Kent Space Center is located about three miles east of Interstate 5, and three miles north of downtown Kent, Washington (see Figure 8).

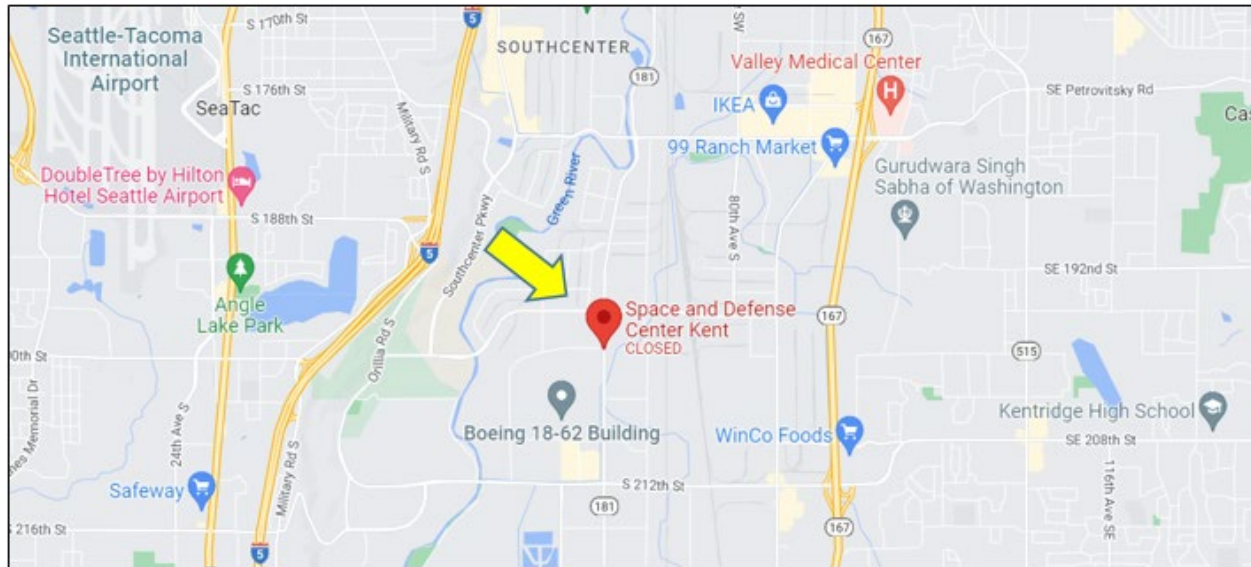


Figure 8: Google map of Boeing Kent Space Center in Kent, Washington.

Environmental Justice and Title VI

Environmental justice (EJ) promotes fair treatment of all people under environmental laws and policies, regardless of their race, color, national origin, or income.

In Washington (and across the United States), more people of color and/ or low-income people live and work near industrial facilities, contaminated sites, and in neighborhoods without easy access to fresh food, green spaces, or clean air and water. These conditions negatively and unfairly affect their health and safety.

EJ strategies and compliance with Title VI of the Civil Rights Act are key to addressing these inequities—especially through public involvement. We make every effort to inform and involve all people. To do this, we use demographic information to design our messaging to fit the community.

Demographics

Kent's estimated population is 130,464, according to the most recent United States census. The city is diverse, and 59% of the population are people of color. Household income, educational attainment, and poverty in Kent are near state and national averages. The population density is 3,856 (per sq. mi.). The median income for households in Kent is \$43, 833 (EJScreen, EPA's Environmental Justice and Screening Mapping Tool, Version 2.0).¹¹

¹¹ <https://ejscreen.epa.gov/mapper/>

Below are the demographic indicators for the area around Boeing Kent Space Center, including the minority, low income, and linguistically isolated populations.

Table 1. Study of the people living within 3.14 square miles around the Boeing Kent facility (population 270).

Socioeconomic Indicators	Value	State Average	Percentile in State
Demographic Index	40%	29%	78
People of Color Population	59%	31%	88
Low-Income Population	20%	26%	46
Unemployment Rate	7%	5%	76
Linguistically Isolated Population	4%	4%	70
Population with Less Than High School Education	8%	9%	57
Population Under 5 Years of Age	7%	6%	61
Population Over 64 Years of Age	9%	15%	24

People of color and minority populations

The EJScreen for the Boeing Kent Space Center had socioeconomic indicators above the state’s 80th percentile for people of color. This population should be evaluated for environmental justice concerns:

- People of color population.

Census data from the 2015–2019 American Community Survey indicates that the largest racial population near the Boeing Kent Space Center is Asian (83 people), making up 31 percent of the total population.

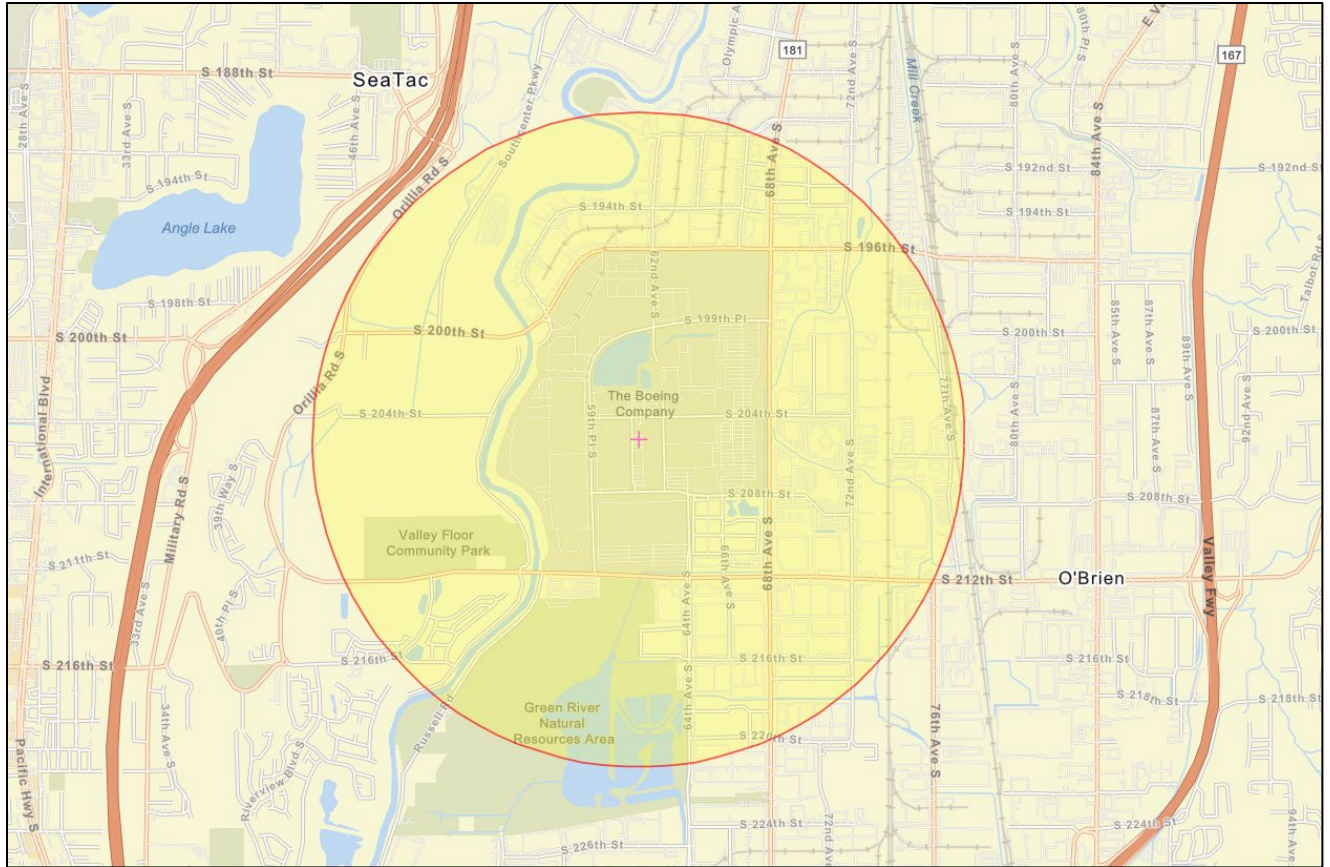


Figure 9: Environmental justice (EJ) demographic screening boundaries around Being Kent Space Center, from EPA’s EJSscreen mapping tool.¹²

English language proficiency

For this ZIP code (98032), according to the [Language Data \(Census 2015\)](https://data.census.gov/tables/2019/decennial/language-data),¹³ the Spanish or Spanish Creole populations that speak English “less than very well” are 9.87 percent of the area population. Other spoken languages include: other Indic languages, African languages, Chinese, Tagalog, Vietnamese, Korean, other Pacific Island languages, and Mon Khmer Cambodian.

The population near Boeing Kent Space Center includes non-English language speakers who speak English less than “very well,” according to census data from 2015–2019. Out of the 6 linguistically isolated households in this area, 5 (78%) of them speak Asian-Pacific Island languages and 1 (22%) speak Spanish.

¹² <https://ejsscreen.epa.gov/mapper/>

¹³ http://teams/sites/EXEC/mitt/LanguageMap/Shared%20Documents/ACS_LanguageData_2015.aspx

Outreach activities and language access

Based on this analysis, we will conduct the following outreach activities for this site:

- Contact cultural organizations and leaders in these communities.
- Provide information about requesting language services in all public materials.
- Provide information for this site in Spanish, Chinese, Vietnamese and Korean languages in all basic outreach materials.
- Translate all documents that are vital or critical to well-being for language groups that are either 5% of the population or more than 1,000 people.

To request translation services, please contact:

Janelle Anderson, Community Outreach & Environmental Education Specialist
Washington Department of Ecology
Northwest Regional Office
P.O. Box 330316
Shoreline, WA 98133
Phone: 425-301-6454
Email: Janelle.anderson@ecy.wa.gov

Ecology will contact cultural community organizations as part of our outreach and provide information in other languages following federal guidance.¹⁴ The non-English language most widely spoken in this area is Spanish. When appropriate, we will provide outreach materials in this language. We strive to make our public participation efforts as inclusive as possible and welcome your input about how to reach the nearby community.

Tribal involvement

Ecology invites the federally recognized Muckleshoot Tribe and Suquamish Tribe residing in King County to engage in decision-making during the process on a government-to-government basis.

¹⁴ Guidance to Environmental Protection Agency Financial Assistance Recipients Regarding Title VI Prohibition Against National Origin Discrimination Affecting Limited English Proficient Persons, 69 Fed. Reg. § 35602 (June 15, 2004).

Public Participation Activities

Members of the public may ask questions, submit informal comments, or share site information at any time. Interested parties don't need to wait for a formal public comment period to contact Ecology.

However, to be included in the formal site record, comments about the site investigation, cleanup alternatives, or cleanups must be submitted during formal comment periods. In addition, the public is invited to review site documents before they become final. This is the most direct way to learn more about the site and be involved in the cleanup's decision-making.

How we share information with the community

During specific stages of the cleanup, Ecology will mail notices about public comment periods to addresses around the site. The mailing list area varies depending on the type of contamination and its location, but the list will at least include addresses within a quarter-mile radius of the site and other interested organizations and individuals. These notices will provide general information about the site, contact information for submitting comments, and times and locations of public meetings or hearings—or how to request one if a meeting is not yet scheduled.

Ecology may also develop documents outside of comment periods to keep the community updated on the site's status. These informational documents will be available online and at document repositories. Print copies may be mailed to the nearby community if we feel the message warrants the extra costs.

Comment period notices and other site announcements may also be posted in the community (for example, in local businesses, schools, and libraries).

Postal mailing list

Ecology maintains a mailing list that includes addresses near the site. This mailing list also includes local, state, Tribal and federal government contacts.

Everyone will receive public comment notices when draft documents are available.

We'll add additional individuals, organizations, and other interested parties to the mailing list as requested. If you would like to be added to the mailing list for this site, please contact Janelle Anderson at 425-301-6454 or Janelle.anderson@ecy.wa.gov.

Site Register

Public comment periods, events, and other cleanup notices are published in Ecology's [Site Register](#).¹⁵ To receive the Site Register by email, please [subscribe online](#),¹⁶ or contact Sarah Kellington at sarah.kellington@ecy.wa.gov or 360-280-3167.

¹⁵ ecology.wa.gov/Regulations-Permits/Guidance-technical-assistance/Site-Register-lists-and-data

¹⁶ https://public.govdelivery.com/accounts/WAECY/subscriber/new?topic_id=WAECY_118

Newspaper display ads or legal notices

We will announce public comment periods and events for this site in ads or notices published in the [Kent Reporter](#).¹⁷

Ecology's website and social media platforms

We have a website for [Boeing Kent Space Center](#)¹⁸ with more information and related documents. Information may also be shared about cleanup sites through [news releases](#)¹⁹ and [Ecology's blog](#).²⁰

Document repositories

You may review documents in person at this location by appointment:

Washington State Department of Ecology
Northwest Region Office
15700 Dayton Ave N.
Shoreline, WA 98133-9716
Reception (24-hour) 206-594-0000

To schedule an appointment, please contact:

Michael Hart
michael.hart@ecy.wa.gov
Public Disclosure Coordinator

Signs around the cleanup site

We may also put up signs with information about project status, traffic impacts, and health risks around the cleanup site.

How to share information with us

You may ask questions, submit informal comments, or share site information with us at any time. Please contact Janelle Anderson at 425-301-6454 or Janelle.anderson@ecy.wa.gov.

To be included in the formal site record, comments must be submitted during formal public comment periods. At minimum, MTCA requires 30-day public comment periods for draft cleanup documents and 14-day comment periods for SEPA documents. SEPA documents are often made available for public review with other cleanup documents. In that case, we combine the comment periods, and they will last at least 30 days. We may hold comment periods longer than 30 days.

¹⁷ kentreporter.com

¹⁸ <https://apps.ecology.wa.gov/cleanupsearch/site/12671>

¹⁹ <https://ecology.wa.gov/About-us/Get-to-know-us/News>

²⁰ <https://ecology.wa.gov/blog>

We may also identify public concerns and cleanup goals by meeting with and soliciting information from interested community members and organizations. To collaborate with us about this site, please contact Janelle Anderson at 425-301-6454 or Janelle.anderson@ecy.wa.gov.

Public comment periods

Formal 30-day comment periods allow members of the public to comment on draft documents, legal agreements, and proposed cleanup actions. If there is enough interest, Ecology may extend the public comment period. When Ecology oversees SEPA determinations, we hold comment periods for at least two weeks and comment periods may last 30 days or more when other cleanup documents are available for review at the same time.

Following a comment period, we publish all the input we received and respond to comments and questions. If the comments result in significant changes to the cleanup documents, then the documents will be revised and re-issued for public review. If the comments don't result in significant changes, they become final.

Public events

We hold public meetings, workshops, open houses, and public hearings based on community interest. If we haven't scheduled a meeting, we will hold one if 10 people request it—we may extend the public comment period so the meeting occurs during it.

Events are held at locations close to the site that meet Americans with Disabilities Act standards. Public meetings, workshops, open houses, and hearings are always announced in advance using a variety of methods.

Americans with Disabilities Act

The Department of Ecology is committed to providing people with disabilities access to information and services by meeting or exceeding the requirements of the Americans with Disabilities Act (ADA), Section 504 and 508 of the Rehabilitation Act, and Washington State Policy #188.

To request an ADA accommodation, contact the Ecology by phone at 360-407-6700 or email at hwtrpubs@ecy.wa.gov. For Washington Relay Service or TTY call 711 or 877-833-6341. Visit [Ecology's ADA website](#) for more information.²¹

²¹ <https://ecology.wa.gov/About-us/Accessibility-equity/Accessibility>

PPP Amendments

Ecology developed this PPP following MTCA regulations (WAC 173-340-600). We review it as the cleanup progresses and amend it as necessary. You may suggest amendments to Janelle Anderson by phone at 425-301-6454 or email Janelle.anderson@ecy.wa.gov.

This PPP includes information for the public regarding opportunities for public involvement and comment. The planned outreach activities will keep the public informed and provide ways for people to communicate their concerns and questions.

If you feel the planned outreach activities are insufficient or need changes, we welcome your feedback. Different outreach activities or outreach tools can be used right away, with or without updating this plan.

List of Abbreviations and Acronyms

Table 2. List of abbreviations and acronyms.

Abbreviation or Acronym	Definition
ADA	Americans with Disabilities Act
Ecology	Washington State Department of Ecology
EJ	Environmental Justice
EJScreen	EPA's Environmental Justice Screening and Mapping Tool
EPA	US Environmental Protection Agency
MTCA	Model Toxics Control Act
PAHs	Polycyclic aromatic hydrocarbons
PCBs	Polychlorinated biphenyls
PPP, Plan	Public participation plan
RCRA	Resource Conservation and Recovery Act
SEPA	State Environmental Policy Act
Site	Area where hazardous substances at the facility are currently located
SVOCs	Semi-volatile organic compounds
TSD	Treatment, storage, and disposal facility
VOCs	Volatile organic compounds
WAC	Washington Administrative Code