



Public Participation Plan: Plantation Rifle Range

**5102 Samish Way
Bellingham, Washington 98229**

Hazardous Waste and Toxics Reduction Program

Washington State Department of Ecology
Northwest Region Office
Shoreline, Washington

**Revised February 2023
Publication 23-04-010**

Publication Information

This plan is available on Ecology's website:

- ecology.wa.gov/PRR.
- apps.ecology.wa.gov/publications/SummaryPages/2304010.html.

Cover photo

Photo: Washington State Department of Ecology.

Related Information

- Facility site ID: 21444552
- Cleanup site ID: 15182

Contact Information

Washington State Department of Ecology
Hazardous Waste and Toxics Reduction Program
Northwest Region Office
P.O. Box 330316
Shoreline, WA 98133

Janelle Anderson

Community Outreach Specialist
Telephone: 425-301-6454
email: janelle.anderson@ecy.wa.gov

Val Cramer

Site Manager
Telephone: 425-698-5539
email: valerie.cramer@ecy.wa.gov

Website: Washington State Department of Ecology¹

¹ www.ecology.wa.gov/contact

ADA Accessibility

The Department of Ecology is committed to providing people with disabilities access to information and services by meeting or exceeding the requirements of the Americans with Disabilities Act (ADA), Section 504 and 508 of the Rehabilitation Act, and Washington State Policy #188.

To request an ADA accommodation, contact Ecology by phone at 360-407-6700 or email at hwtrpubs@ecy.wa.gov. For Washington Relay Service or TTY call 711 or 877-833-6341. Visit [Ecology's website](http://www.ecology.wa.gov)² for more information.

Translations Available

Español (Spanish)

El Departamento de Ecología está anunciando el período de comentarios públicos relacionado a la limpieza ambiental del sitio Plantation Rifle Range. Para obtener este documento o más información sobre este sitio en español, favor de comunicarse con Janelle Anderson al 360-301-6454 o janelle.anderson@ecy.wa.gov.

中文 (Chinese)

華盛頓州生態管理署宣布與 Plantation Rifle Range 的環境清理工作有關的公眾意見徵詢期。如要本文檔的中文版，或了解更多關於本網站的中文版信息，請聯繫 Sunny Becker 撥打 425-457-3842 或發送電子郵件至 sunny.becker@ecy.wa.gov。

Deutsch (German)

Das Umweltministerium lädt die Öffentlichkeit ein, zur Renaturierung des Schießstands Plantation in Bellingham (Washington) Stellung zu nehmen. Für ein deutschsprachiges Exemplar dieses Dokuments oder zusätzliche Informationen senden Sie bitte eine E-Mail an janelle.anderson@ecy.wa.gov oder wählen Sie die 425-301-6454.

Русский (Russian)

Департамент экологии принимает комментарии общественности относительно действий по улучшению окружающей среды в Plantation Rifle Range в г. Bellingham, штат Вашингтон. Чтобы получить русскоязычную копию данного документа или дополнительную

² www.ecology.wa.gov/accessibility

информацию, обращайтесь по адресу электронной почты janelle.anderson@ecy.wa.gov или по телефону 425-301-6454.

日本語 (Japanese)

エコロジー局では、ワシントン州ベルリンハムの Plantation Rifle Range (プランテーションライフル射撃場) の環境浄化について、パブリックコメントの期間を設けています。この文書の日本語版を請求する場合、または詳細については、janelle.anderson@ecy.wa.gov にメールを送信するか、425-301-6454 に電話をおかけください。

แบบไทย (Thai)

Department of Ecology กำลังเปิดให้ประชาชนทั่วไปแสดงความคิดเห็นเกี่ยวกับการทำความสะอาด Plantation Rifle Range เพื่อรักษาสีเขียวแวดล้อม ณ เมือง Bellingham รัฐ Washington โปรดส่งอีเมลไปที่ janelle.anderson@ecy.wa.gov หรือโทรติดต่อหมายเลข 425-301-6454 เพื่อขอเอกสารฉบับนี้ฉบับภาษาไทยหรือติดต่อสอบถามข้อมูลเพิ่มเติม.

Tagalog (Tagalog)

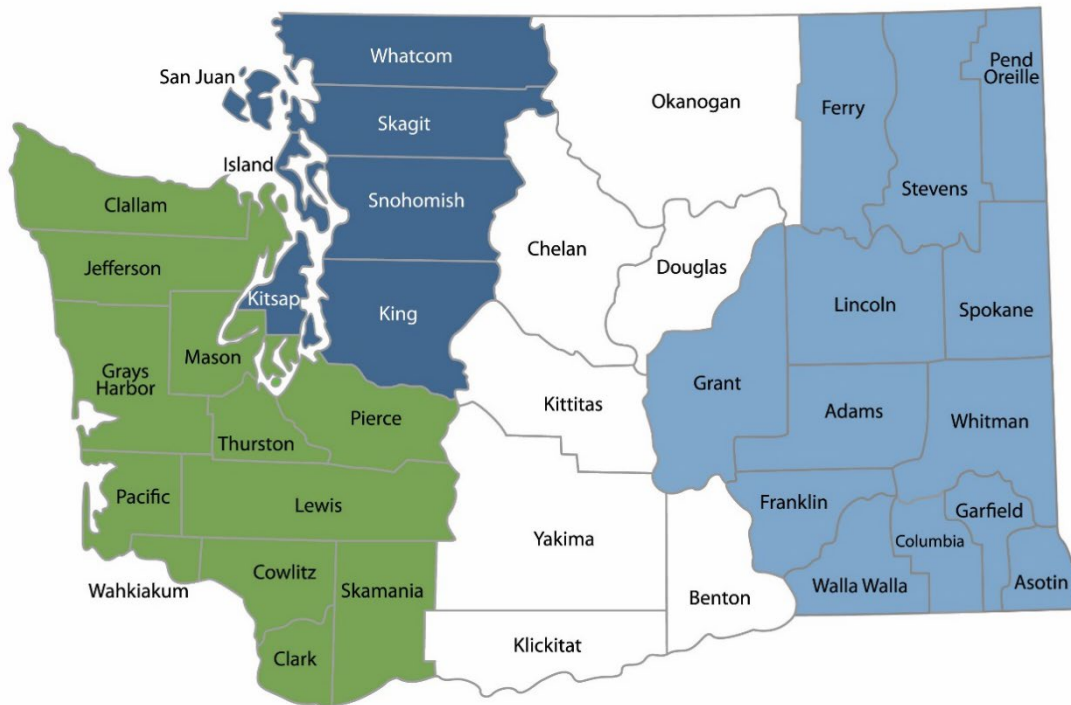
Ang Department of Ecology ay tatanggap ng komento ng publiko tungkol sa paglilinis na kapaligiran ng Plantation Rifle Range sa Bellingham, Washington. Para humiling ng kopya ng dokumentong ito sa Tagalog o para sa higit pang impormasyon, pakisuyong mag-email sa janelle.anderson@ecy.wa.gov o tumawag sa 425-301-6454.

اللغة العربية (Arabic)

تحتفظ وزارة البيئة بفترة تعقيب عام بشأن التنظيف البيئي لميدان الرماية (Plantation Rifle Range) في بيلينغام، واشنطن. لطلب نسخة من المستند باللغة العربية أو لمزيد من المعلومات، يرجى التواصل عبر البريد الإلكتروني: janelle.anderson@ecy.wa.gov أو الاتصال على الرقم: 425-301-6454.

Department of Ecology's Region Offices

Map of Counties Served



Southwest Region 360-407-6300	Northwest Region 206-594-0000	Central Region 509-575-2490	Eastern Region 509-329-3400
---	---	---------------------------------------	---------------------------------------

Region	Counties served	Mailing Address	Phone
Southwest	Clallam, Clark, Cowlitz, Grays Harbor, Jefferson, Mason, Lewis, Pacific, Pierce, Skamania, Thurston, Wahkiakum	P.O. Box 47775 Olympia, WA 98504	360-407-6300
Northwest	Island, King, Kitsap, San Juan, Skagit, Snohomish, Whatcom	P.O. Box 330316 Shoreline, WA 98133	206-594-0000
Central	Benton, Chelan, Douglas, Kittitas, Klickitat, Okanogan, Yakima	1250 W Alder St Union Gap, WA 98903	509-575-2490
Eastern	Adams, Asotin, Columbia, Ferry, Franklin, Garfield, Grant, Lincoln, Pend Oreille, Spokane, Stevens, Walla Walla, Whitman	4601 N Monroe Spokane, WA 99205	509-329-3400
Headquarters	Across Washington	P.O. Box 46700 Olympia, WA 98504	360-407-6000

Public Participation Plan

**Plantation Rifle Range
5102 Samish Way
Bellingham, WA 98229**

Hazardous Waste & Toxics Reduction Program
Washington State Department of Ecology
Northwest Region Office
Shoreline, WA

Revised February 2023 | Publication 23-04-010



DEPARTMENT OF
ECOLOGY
State of Washington

Table of Contents

List of Figures	5
List of Tables	5
Public Involvement in Contamination Cleanup	8
Public participation grants	8
Site contacts	9
State and Federal Cleanup Laws	10
Model Toxics Control Act	10
Resource Conservation and Recovery Act	10
State Environmental Policy Act	11
Site Information	13
Land use	13
Site background	13
Contamination	13
Cleanup process	14
Area community	16
Environmental justice and Title VI	17
Public Participation Activities	21
How we share information with the community	21
How to share information with us	23
Americans with Disabilities Act	24
PPP Amendments	24
Abbreviations and Acronyms	25

List of Figures

Figure 1: Washington's formal cleanup process infographic.	12
Figure 2: Formal cleanup process infographic (English).	15
Figure 3: Formal cleanup process infographic (Spanish).	15
Figure 4: Formal cleanup process infographic (Chinese).	15
Figure 5: Google map of Bellingham, Washington.	16
Figure 6: Google map of Plantation Rifle Range in Bellingham, Washington.	17
Figure 7: Environmental justice (EJ) demographic screening boundaries.	19

List of Tables

Table 1. Study of the people living within 3.14 square miles around the site.	18
Table 2. List of abbreviations and acronyms.	25

Public Involvement in Contamination Cleanup

Ecology (we) developed this Public Participation Plan (PPP) in cooperation with Whatcom County Parks & Recreation. This plan is for Plantation Rifle Range, located at 5102 Samish Way, in Bellingham, Washington.

The PPP describes how we involve the public in investigating contamination and selecting cleanup activities during the corrective action process.

We encourage the public to:

- Learn about and get involved in decision-making opportunities.
- Provide input during the investigation and cleanup of contamination.

This plan is for corrective action (cleanup). Public participation activities are coordinated between Whatcom County Parks & Recreation and Ecology. We must make sure the cleanup and the outreach comply with the Resource Conservation and Recovery Act (RCRA) laws and Washington State's Dangerous Waste Regulations and Model Toxics Control Act (MTCA) requirements. We will hold public comment periods and other public outreach during the cleanup process.

Public participation grants

Grants may be available to neighborhood committees, nonprofits, and other groups. For contaminated sites, these funds can be used to:

- Hire an expert to help interpret technical information.³
- Conduct activities to increase understanding and participation in the cleanup process.

For more information about public participation grants, please contact Faith Wimberley at 425-275-7285 or faith.wimberley@ecy.wa.gov. You may also visit the [public participation grant webpage](#).⁴

³ Ecology currently does not have a citizen technical advisor for providing technical assistance to citizens on issues related to the investigation and cleanup of the site.

⁴ www.ecology.wa.gov/ppg

Site contacts

To be included in the site record, comments about the cleanup process must be submitted during comment periods. Questions and informal comments or information about the site's history are welcome anytime.

Ecology

Washington State Department of Ecology
Northwest Region Office
P.O. Box 330316
Shoreline, WA 98133

Val Cramer
Site Manager
valerie.cramer@ecy.wa.gov
425-698-5539

Janelle Anderson
Community Outreach Specialist
janelle.anderson@ecy.wa.gov
425-301-6454

Potentially Liable Parties (PLPs)

Property Owner:

Bertch Timberlands, LLC

Contact:
Robert Bertch
425-358-8198
btimberlands@hotmail.com

Facility Operator:

Whatcom County Parks & Recreation
Whatcom County Executive's Office
311 Grand Ave.
Bellingham, WA 98225

Contact:
Christ Thomsen
Parks Operations Manager
Whatcom County Parks & Recreation
3373 Mount Baker, WA 98226
Phone: 360-778-5850
Cthomsen@co.whatcom.wa.us

State and Federal Cleanup Laws

In Washington State, we use MTCA and other regulations for cleanup activities on properties that treated, stored, or disposed of hazardous wastes. These cleanups, called **corrective actions**, are required under the federal Resource Conservation and Recovery Act (RCRA). The U.S. Environmental Protection Agency (EPA) sets and enforces environmental standards in the United States. EPA allows Ecology to use MTCA, not RCRA, for cleanups in Washington State.

This PPP is required under MTCA. MTCA sets standards to ensure contaminated site cleanups in our state protect human health and the environment.

Model Toxics Control Act

MTCA began as a grassroots citizens' initiative in 1988. We started using it in our state to clean up contaminated sites in 1989. Under MTCA, a current or past property owner or operator may need to pay to clean up contamination, until levels are safe for human health and the environment. The contamination may be on their property or coming from their property.

Under MTCA, we oversee cleanups and issue [regulations and guidance](#)⁵ for them. We look into reports of property contamination. If the contamination is a threat to human health or the environment, the property is put on the Hazardous Sites List and the cleanup process begins.

Public participation is an important part of the MTCA process. Participation needs are determined for each cleanup site by the level of public interest and the risk posed by the contamination. People who live near the site, community groups, businesses, government entities, and other interested parties can comment on the cleanup process.

Under MTCA, the cleanup process happens in phases. Many of the phases have time for the public to review and comment on cleanup documents. See Figure 1, Washington's Formal Cleanup Process, for more information.

Resource Conservation and Recovery Act

There are federal and state rules about hazardous wastes. Congress passed RCRA in 1976 to ensure safe management and disposal of hazardous waste. RCRA was updated several times to expand its scope and requirements.

⁵ <https://apps.ecology.wa.gov/publications/publications/9406.pdf>

RCRA's goals are to:

- Protect human health and the environment.
- Reduce waste and conserve energy and natural resources.
- Reduce or stop hazardous waste generation.

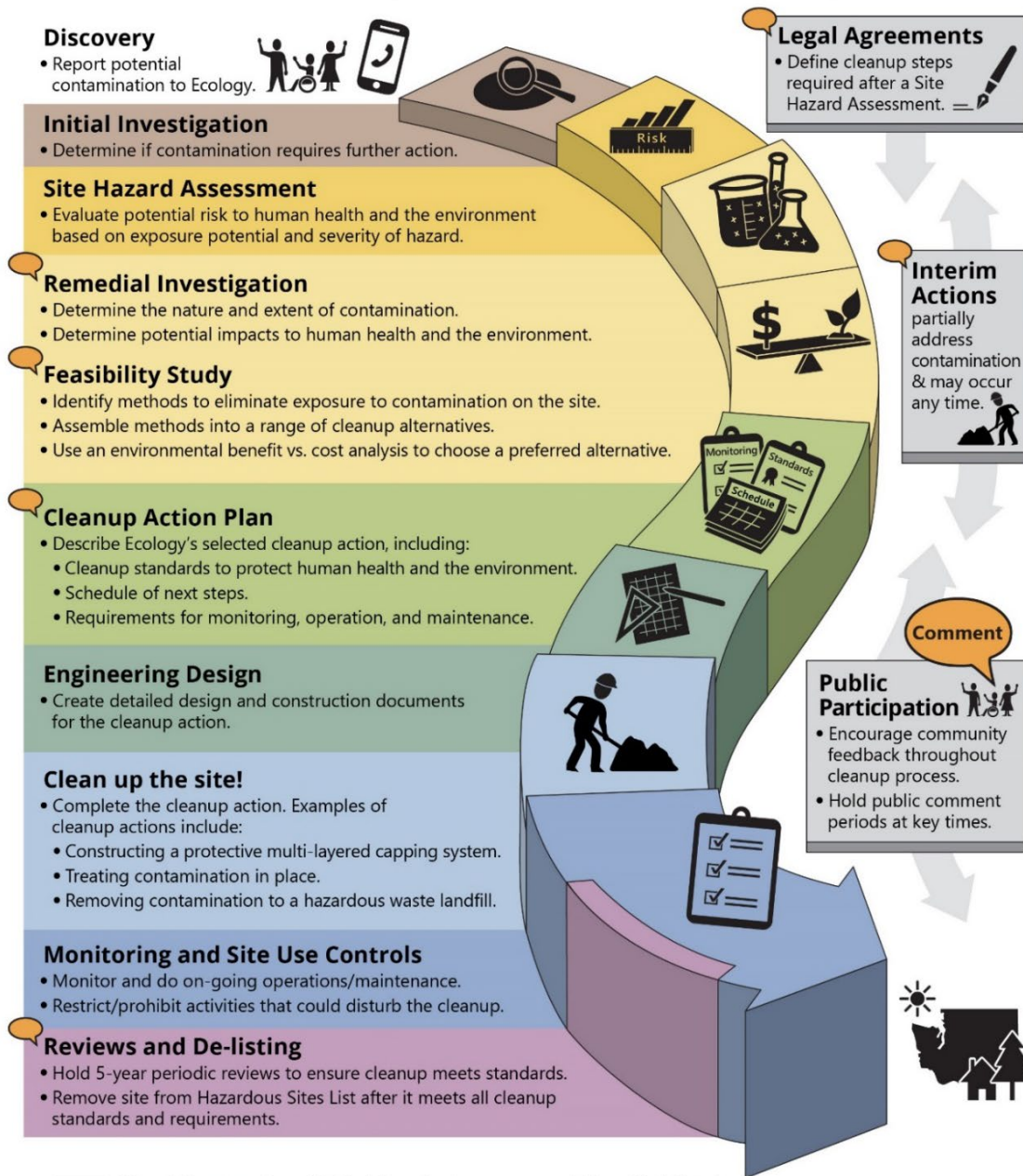
Treatment, storage, and disposal (TSD) facilities must have a permit to design, operate, maintain, or close their site. RCRA also requires facilities to clean up contamination from past and present practices. These cleanup activities are called **corrective actions**.

Federal RCRA and state dangerous waste regulations require opportunities for public participation during the stages of facility permitting and cleanup.

State Environmental Policy Act

The State Environmental Policy Act (SEPA) is followed during review and development of cleanup plans. We use SEPA during site cleanups to find and evaluate negative environmental impacts that could result from a proposed action.

Washington's Formal Cleanup Process



Washington's Cleanup Law

Model Toxics Control Act (MTCA)

MTCA defines the cleanup process. This public-initiated environmental law directs upland cleanups (on land or in groundwater) and sediment cleanups (in freshwater or marine environments). Ecology enacts MTCA and regulates the cleanup process.

September 2019
Ecology Publication 19-09-166

Figure 1: [Washington's formal cleanup process infographic.](#)⁶

[Read a plain text version of Figure 1.](#)⁷

⁶ <https://apps.ecology.wa.gov/publications/SummaryPages/1909166.html>

⁷ <https://apps.ecology.wa.gov/publications/parts/1909166part2.pdf>

Site Information

Land use

The Plantation Rifle Range facility (site) opened in 1971, prior to the promulgation of RCRA in 1978. It's located on property owned by Bertch Timberlands, LLC. Whatcom County Parks & Recreation operates the site and leases the property from Bertch Timberlands, LLC.

Site background

Plantation Rifle Range is one of two public shooting ranges in Washington. It consists of an outdoor, high-power rifle range, indoor and outdoor small-bore rifle and pistol ranges, a trap field, and a classroom. The high-power rifle range has target lines at 50, 100, 200, and 300-yards. Earthen backstops (impact berms) exist behind the 50- and 300-yard target lines.

Ruby Creek flows along the eastern boundary of the site's high-power rifle range. Where the creek meets the 300-yard back stop, it enters a pipe running underneath the backstop. The creek re-emerges from the pipe to the southeast of the 300-yard targets.

In addition to Ruby Creek, wetlands are located within and adjacent to the east side of the high-power rifle range. Ruby Creek is a major tributary to Finney Creek, which flows into Lake Samish. Lake Samish is a drinking water supply to area residents around the lake.

In 2020, the Department of Ecology inspected the range and collected surface water samples that indicated the presence of lead above Clean Water Act standards for aquatic life in freshwater systems. Starting in 2020, Whatcom County began conducting monthly surface water sampling at the site. In 2021, the Department of Ecology returned and took soil samples from the range floor. These samples confirmed the presence of lead.

While the amount of lead is above Clean Water Act standards for aquatic life, the tests have not shown the levels to be dangerous to humans and are below the standard for drinking water.

Expected cost to find and remove the lead wastes is at least \$655,000, and the work should be finished sometime in 2023. This is the first time the lead has been removed since the range opened in 1971.

Contamination

Lead is a known contaminant at Plantation Rifle Range. It has been detected in the soil, sediment, and surface water at the site. Lead is a toxic metal that impairs brain function. Exposure to lead causes noticeable developmental delays in children. For more information

about lead, see [Health Effects of Lead Exposure](#),⁸ a webpage by the Centers for Disease Control and Prevention.

Some soil samples taken from this site had lead at levels more than 100 times the hazardous waste limit. Risk-based screenings have not taken place yet.

At this time, people are not being exposed to harmful levels of contamination because the range is closed. Cleanup activities will be done under an approved health and safety plan.

Limited soil samples have been collected so far and do not represent the entire site. The results are in a raw data format, not in an easy-to-read table. The first step of this cleanup process is to conduct extensive sampling to determine what contamination is on the site and where it is. A detailed site assessment will be done in 2023 and new information about the contamination will be available on our [Plantation Rifle Range website](#).⁹

Cleanup process

Whatcom County Parks & Recreation must clean up the contamination at the site. There are six phases in the cleanup process: remedial investigation, feasibility study, cleanup plan, cleanup design, cleanup implementation, and monitoring and site use controls. This site is at the very beginning of the process. The first step will be to thoroughly study the site to find out the types and extent of contamination.

Interim actions or partial cleanups can occur at any time. There will be opportunities for public comment at each stage, except for cleanup implementation.

We apply both the Resource Conservation and Recovery Act (RCRA) and the Model Toxics Control Act (MTCA) regulations to clean up hazardous waste sites. The cleanup protects human health and the environment from dangerous wastes and chemicals.

⁸ <https://www.cdc.gov/nceh/lead/prevention/health-effects.htm>

⁹ ecology.wa.gov/PRR

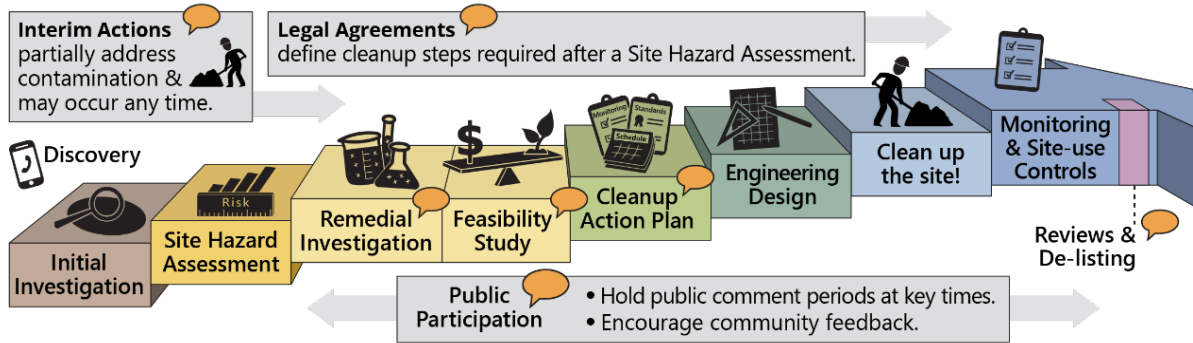


Figure 2: Formal cleanup process infographic (English). [Read a plain text version.](#)¹⁰

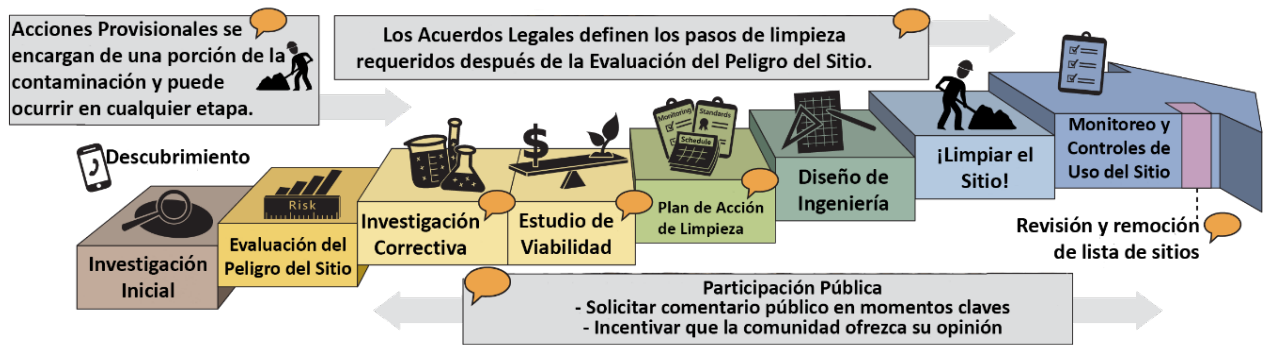


Figure 3: Formal cleanup process infographic (Spanish).

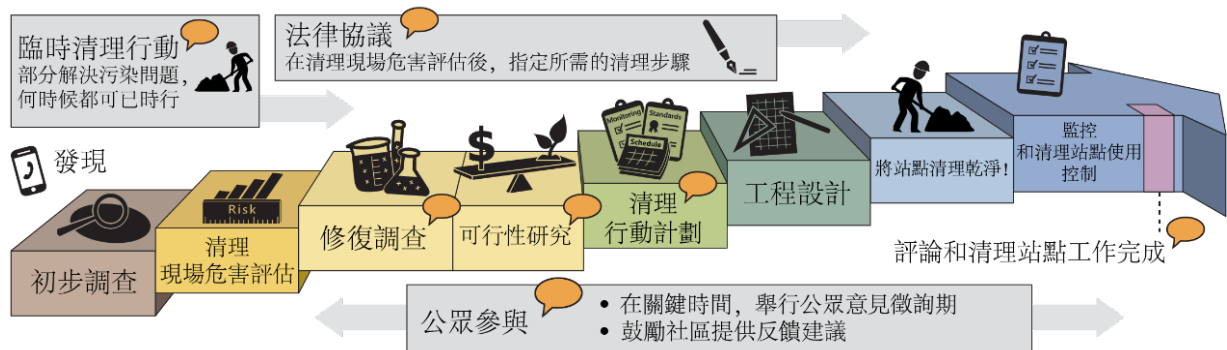


Figure 4: Formal cleanup process infographic (Chinese).

¹⁰ apps.ecology.wa.gov/publications/parts/1909166part2.pdf

Area community

Bellingham

Bellingham is located in Whatcom County, Washington, United States. It is a coastal city near the Canadian border (see Figure 5). It also acts as a port for ferries to Alaska. It is the largest city in Whatcom County, with just under 100,000 residents.

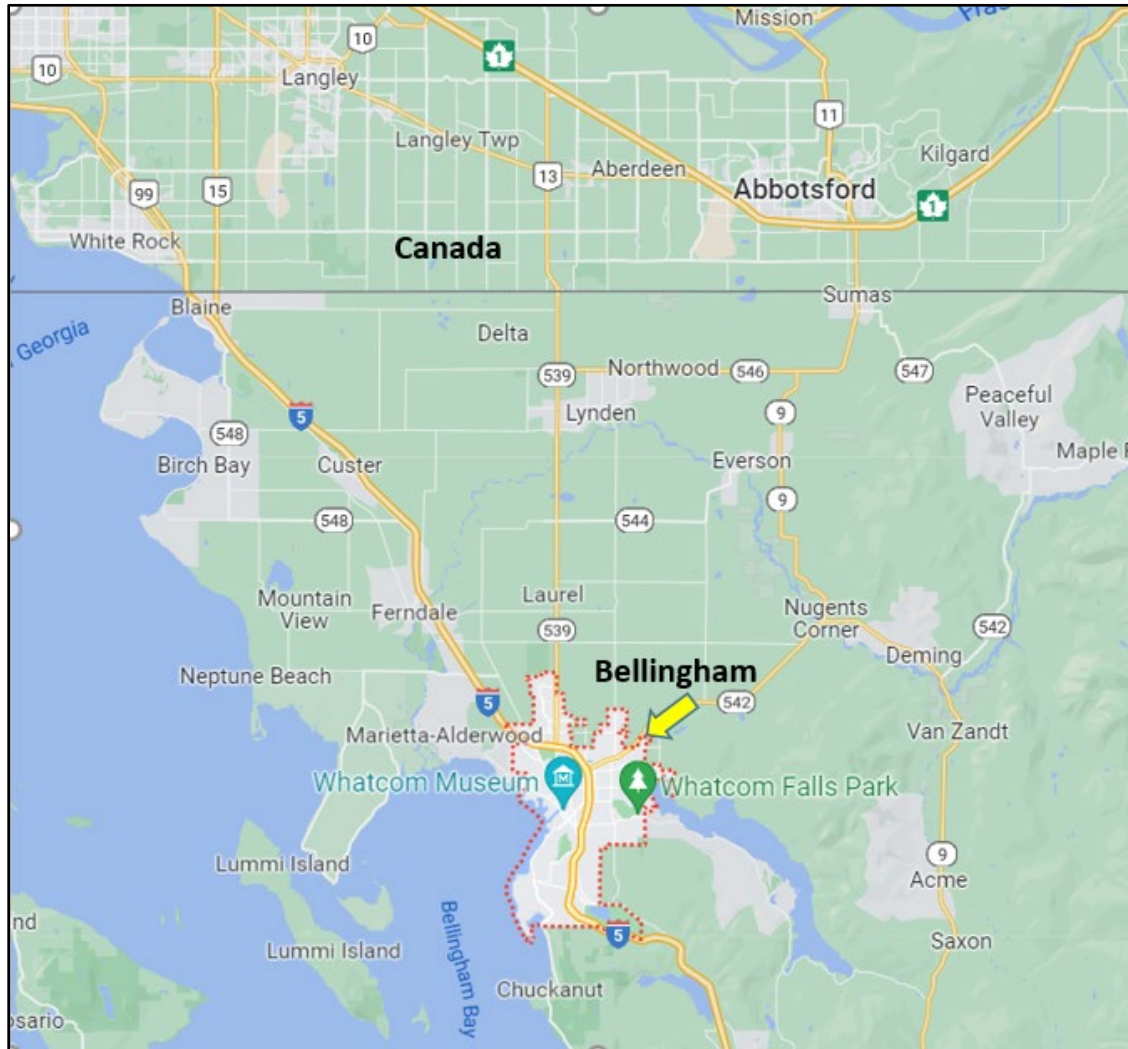


Figure 5: Google map of Bellingham, Washington.

The Plantation Rifle Range is located approximately 8 miles southeast of downtown Bellingham, just off of Interstate 5 (Figure 6).

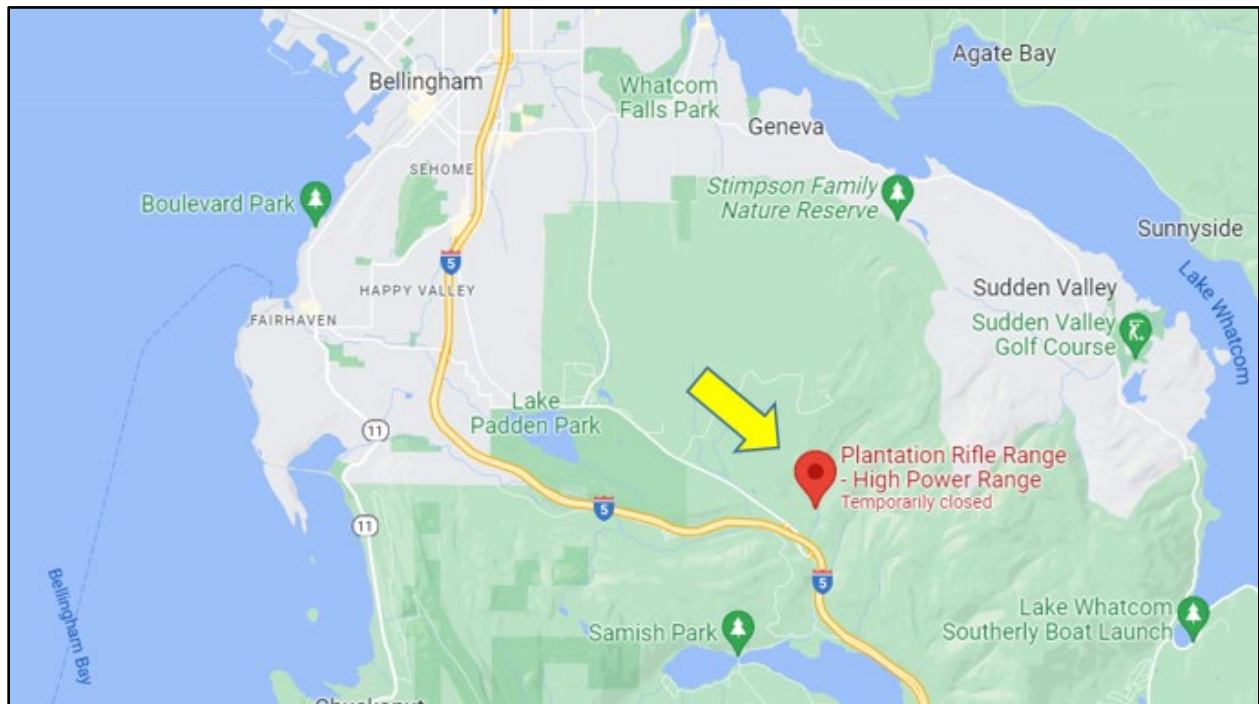


Figure 6: Google map of Plantation Rifle Range in Bellingham, Washington.

Environmental justice and Title VI

Environmental justice (EJ) promotes fair treatment of all people under environmental laws and policies, regardless of their race, color, national origin, or income.

In Washington (and across the United States), more people of color and low-income people live and work near industrial facilities, contaminated sites, and in neighborhoods without easy access to fresh food, green spaces, or clean air and water. These conditions negatively and unfairly affect their health and safety.

EJ strategies and compliance with Title VI of the Civil Rights Act are key to addressing these inequities—especially through public involvement. We make every effort to inform and involve all people. To do this, we use demographic information to design our messaging to fit the community.

Demographics

Bellingham’s estimated population is 92,289, according to the most recent United States census.¹¹

Below are the demographic indicators for the area around Plantation Rifle Range, including the people of color, low-income, and limited English speaking populations.

Table 1. Study of the people living within 3.14 square miles around the site (population 191).

Socioeconomic Indicators	Value	State Average	Percentile in State
Demographic Index	21%	28%	40
People of Color Population	21%	33%	39
Low-Income Population	21%	24%	49
Unemployment Rate	4%	5%	49
Limited English Speaking	0%	4%	0
Population with Less Than High School Education	7%	8%	54
Population Under 5 Years of Age	7%	6%	68
Population Over 64 Years of Age	18%	15%	64

People of color population

We used [EJScreen](https://www.epa.gov/ejscreen),¹² an EPA mapping tool, to learn more about the people living near Plantation Rifle Range. The EJScreen for Plantation Rifle Range did not have any socioeconomic indicators above the state’s 80th percentile for people of color populations.

Census data from the 2016–2020 American Community Survey indicates that the largest people of color population near the site is Hispanic (10 people), making up 5 percent of the total population.

¹¹ <https://www.census.gov/quickfacts/bellinghamcitywashington>

¹² <https://www.epa.gov/ejscreen>

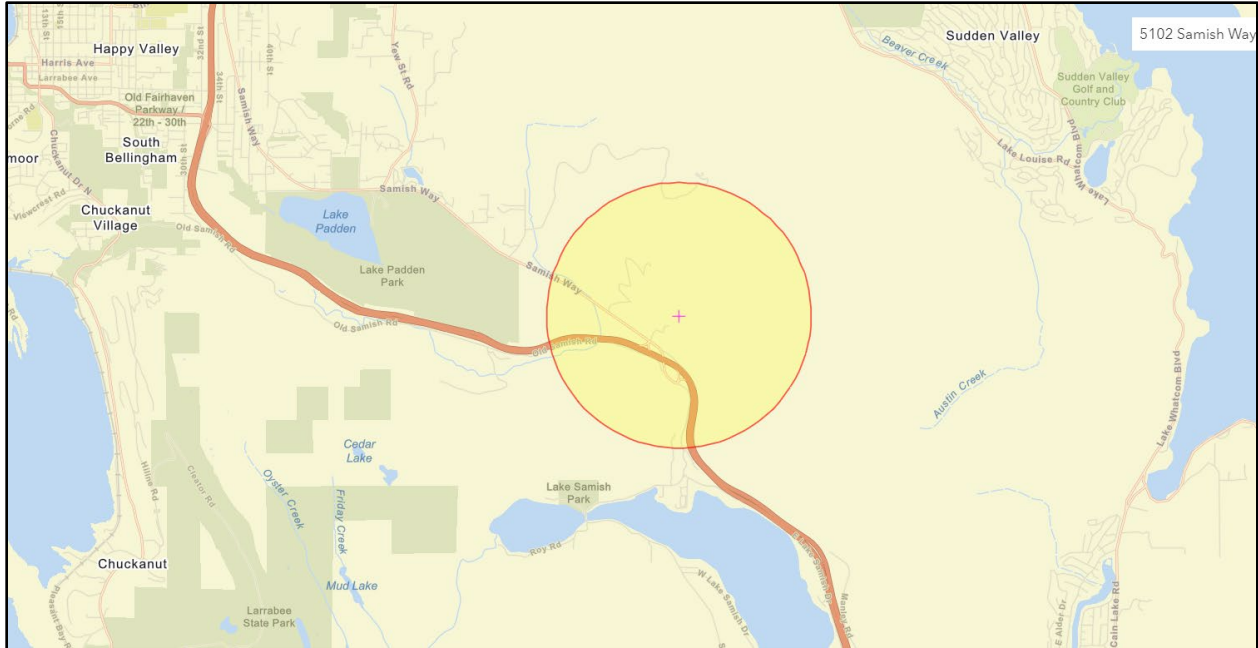


Figure 7: Environmental justice (EJ) demographic screening boundaries around Plantation Rifle Range, from EPA’s EJScreen mapping tool.¹³

English language proficiency

According to 2015 census language data for this zip code (98229), the Spanish or Spanish Creole populations that speak English “less than very well” are 1.01 percent of the area population. Other spoken languages include German, other West Germanic languages, Russian, Chinese, Japanese, Thai, Tagalog, and Arabic.

The population near the site includes a few non-English speaking households, but there are no “linguistically isolated” households, according to census data from 2016 to 2020.

¹³ <https://ejscreen.epa.gov/mapper>

Outreach activities and language access

Based on this analysis, we will conduct the following outreach activities for this site:

- Contact cultural organizations and leaders in these communities.
- Provide information about requesting language services in all public materials.
- Provide information for this site by request only for all basic outreach materials.
- Translate all documents that are vital or critical to well-being for language groups that are either 5% of the population or more than 1,000 people.

To request translation services, please contact:

Janelle Anderson, Community Outreach & Environmental Education Specialist
Washington Department of Ecology
Northwest Regional Office
P.O. Box 330316
Shoreline, WA 98133
Phone: 425-301-6454
Email: Janelle.anderson@ecy.wa.gov

Ecology will contact cultural community organizations as part of our outreach and provide information in other languages following federal guidance.¹⁴ The non-English language most widely spoken in this area is Spanish. When appropriate, we will provide outreach materials in this language. We strive to make our public participation efforts as inclusive as possible and welcome your input about how to reach the nearby community.

Tribal involvement

Ecology invites the federally recognized Lummi Nation, Samish, Swinomish, Upper Skagit, and Nooksack Tribes residing in Whatcom County to engage in decision-making during the process on a government-to-government basis.

¹⁴ Guidance to Environmental Protection Agency Financial Assistance Recipients Regarding Title VI Prohibition Against National Origin Discrimination Affecting Limited English Proficient Persons, 69 Fed. Reg. § 35602 (June 15, 2004).

Public Participation Activities

Members of the public may ask questions, submit informal comments, or share site information at any time. Interested parties don't need to wait for a formal public comment period to contact Ecology.

However, to be included in the formal site record, comments about the site investigation, cleanup alternatives, or cleanups must be submitted during formal comment periods. In addition, the public is invited to review site documents before they become final. This is the most direct way to learn more about the site and be involved in the cleanup's decision-making.

How we share information with the community

During specific stages of the cleanup, Ecology will mail notices about public comment periods to addresses around the site. The mailing list area varies depending on the type of contamination and its location, but the list will at least include addresses within a quarter-mile radius of the site and other interested organizations and individuals. These notices will provide general information about the site, contact information for submitting comments, and times and locations of public meetings or hearings—or how to request one if a meeting is not yet scheduled.

Ecology may also develop documents outside of comment periods to keep the community updated on the site's status. These informational documents will be available online and at document repositories. Print copies may be mailed to the nearby community if we feel the message warrants the extra costs.

Comment period notices and other site announcements may also be posted in the community (for example, in local businesses, schools, and libraries).

Postal mailing list

Ecology maintains a mailing list that includes addresses near the site. This mailing list also includes local, state, Tribal, and federal government contacts.

Everyone will receive public comment notices when draft documents are available.

We'll add additional individuals, organizations, and other interested parties to the mailing list as requested. If you would like to be added to the mailing list for this site, please contact Janelle Anderson at 425-301-6454 or Janelle.anderson@ecy.wa.gov.

Site register

Public comment periods, events, and other cleanup notices are published in Ecology's [Site Register](#).¹⁵ To receive the Site Register by email, please [subscribe online](#),¹⁶ or contact Sarah Kellington at sarah.kellington@ecy.wa.gov or 360-280-3167.

Newspaper display ads or legal notices

We will announce public comment periods and events for this site in ads or notices published in the [Bellingham Herald](#),¹⁷ [Whatcom-news.com](#),¹⁸ and [Cascadia Daily News](#).¹⁹

Ecology's website and social media platforms

We have a website for [Plantation Rifle Range](#)²⁰ with more information and related documents. Information may also be shared about cleanup sites through social media sites, [news releases](#)²¹ and [Ecology's blog](#).²²

Document repositories

You may review documents in person at this location by appointment:

Washington State Department of Ecology

Northwest Region Office

15700 Dayton Ave N.

Shoreline, WA 98133-9716

Reception (24-hour) 206-594-0000

To schedule an appointment, please contact:

Michael Hart

michael.hart@ecy.wa.gov

Public Disclosure Coordinator

You may also review documents at:

Bellingham Public Library

Central Branch

210 Central Avenue

Bellingham, WA 98225

360-778-7323

¹⁵ ecology.wa.gov/Regulations-Permits/Guidance-technical-assistance/Site-Register-lists-and-data

¹⁶ https://public.govdelivery.com/accounts/WAECY/subscriber/new?topic_id=WAECY_118

¹⁷ www.bellinghamherald.com

¹⁸ whatcom-news.com

¹⁹ www.cascadiadaily.com

²⁰ ecology.wa.gov/PRR

²¹ ecology.wa.gov/About-us/Who-we-are/News

²² ecology.wa.gov/blog

Signs around the cleanup site

We may also put up signs with information about project status, traffic impacts, and health risks around the cleanup site.

How to share information with us

You may ask questions, submit informal comments, or share site information with us at any time. Please contact Janelle Anderson at 425-301-6454 or Janelle.anderson@ecy.wa.gov.

To be included in the formal site record, comments must be submitted during formal public comment periods. At minimum, MTCA requires 30-day public comment periods for draft cleanup documents and 14-day comment periods for SEPA documents. SEPA documents are often made available for public review with other cleanup documents. In that case, we combine the comment periods, and they will last at least 30 days. We may hold comment periods longer than 30 days.

We may also identify public concerns and cleanup goals by meeting with and soliciting information from interested community members and organizations. To collaborate with us about this site, please contact Janelle Anderson at 425-301-6454 or Janelle.anderson@ecy.wa.gov.

Public comment periods

Formal 30-day comment periods allow members of the public to comment on draft documents, legal agreements, and proposed cleanup actions. If there is enough interest, Ecology may extend the public comment period. When Ecology oversees SEPA determinations, we hold comment periods for at least two weeks and comment periods may last 30 days or more when other cleanup documents are available for review at the same time.

Following a comment period, we publish all the input we received and respond to comments and questions. If the comments result in significant changes to the cleanup documents, then the documents will be revised and re-issued for public review. If the comments don't result in significant changes, they become final.

Public events

We hold public meetings, workshops, open houses, and public hearings based on community interest. If we haven't scheduled a meeting, we will hold one if 10 people request it—we may extend the public comment period so the meeting occurs during it.

Events are held at locations close to the site that meet Americans with Disabilities Act standards. Public meetings, workshops, open houses, and hearings are always announced in advance using a variety of methods.

Americans with Disabilities Act

The Department of Ecology is committed to providing people with disabilities access to information and services by meeting or exceeding the requirements of the Americans with Disabilities Act (ADA), Section 504 and 508 of the Rehabilitation Act, and Washington State Policy #188.

To request an ADA accommodation, contact the Ecology by phone at 360-407-6700 or email at hwtrpubs@ecy.wa.gov. For Washington Relay Service or TTY call 711 or 877-833-6341. Visit [Ecology's ADA webpage](#) for more information.²³

PPP Amendments

Ecology developed this PPP following MTCA regulations (WAC 173-340-600). We review it as the cleanup progresses and amend it as necessary. You may suggest amendments to Janelle Anderson by phone at 425-301-6454 or email Janelle.anderson@ecy.wa.gov.

This PPP includes information for the public regarding opportunities for public involvement and comment. The planned outreach activities will keep the public informed and provide ways for people to communicate their concerns and questions.

If you feel the planned outreach activities are insufficient or need changes, we welcome your feedback. Different outreach activities or outreach tools can be used right away, with or without updating this plan.

²³ ecology.wa.gov/Accessibility

Abbreviations and Acronyms

Table 2. List of abbreviations and acronyms.

Abbreviation or Acronym	Definition
ADA	Americans with Disabilities Act
Ecology	Washington State Department of Ecology
EJ	Environmental justice
EJScreen	EPA’s environmental justice screening and mapping tool
EPA	U.S. Environmental Protection Agency
MTCA	Model Toxics Control Act
PLP	Potentially liable party
PPP, Plan	Public participation plan
PRR	Plantation Rifle Range
RCRA	Resource Conservation and Recovery Act
SEPA	State Environmental Policy Act
Site	Area where hazardous substances at the facility are currently located
WAC	Washington Administrative Code