

**FLOOR PLAN  
GENERAL NOTES**

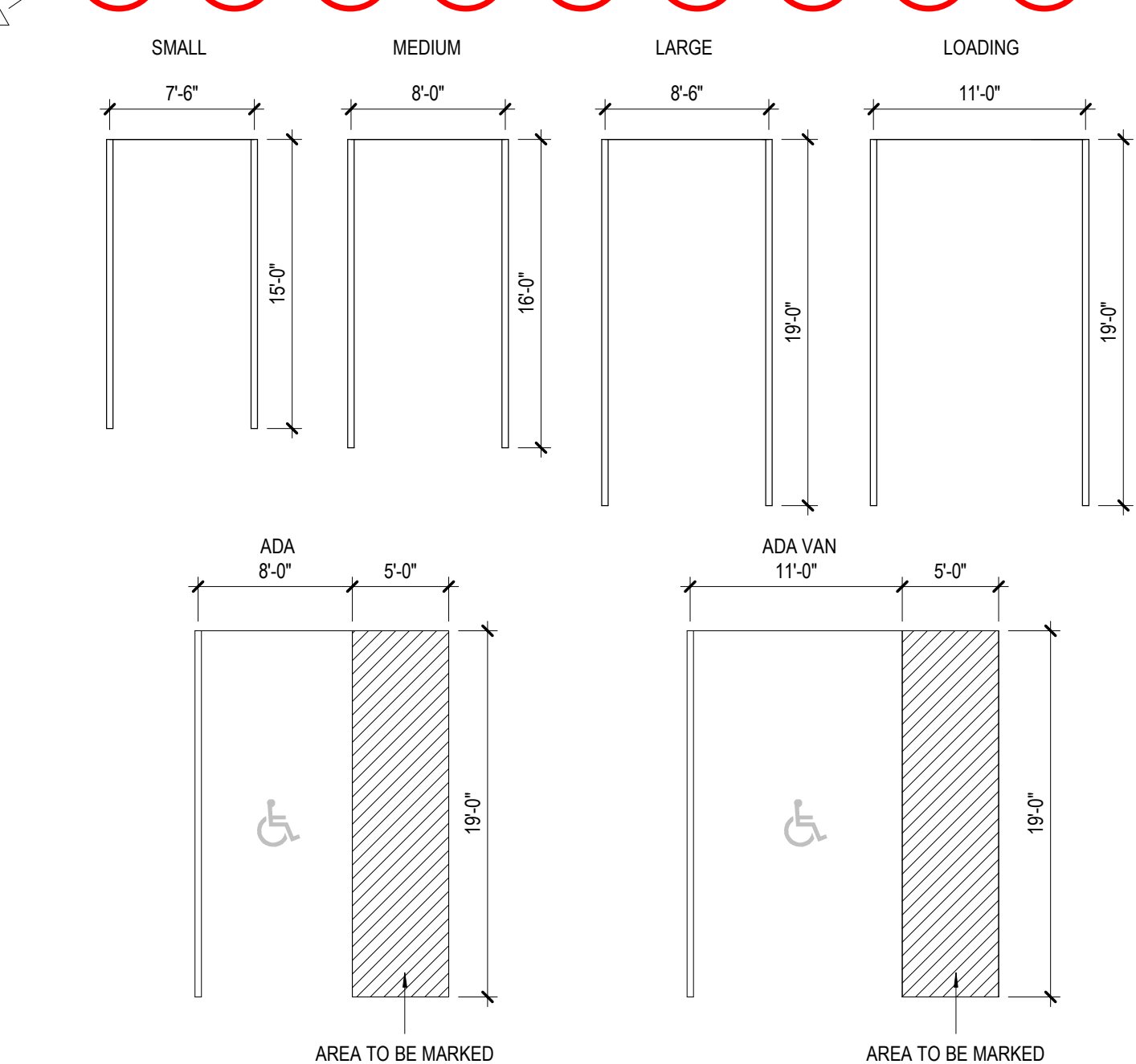
- REFER TO SHEET A00-01 FOR ADDITIONAL GENERAL NOTES.
- PARTITION TYPES ARE SCHEDULED IN THE A61 SERIES.
- SEE PARTITION TYPE SCHEDULE FOR LOCATION OF SOUND ATTENUATION BLANKETS.
- REFER TO THE G SERIES "CODE COMPLIANCE PLANS" FOR GRAPHIC EXTENT OF FIRE RATED PARTITIONS.
- ALL PARTITIONS ARE TYPE "A" UNLESS OTHERWISE NOTED.
- SEE A43 SERIES, PLUMBING LAYOUTS FOR TYPICAL MOUNTING HEIGHTS OF PLUMBING FIXTURES AND TOILET ACCESSORIES.
- ALL LAVS REQUIRE A PAPER TOWEL DISPENSER, AND A SOAP DISPENSER UNO.
- PROVIDE A 1'-4" WIDE CHASE FROM EXTERIOR FACE TO EXTERIOR FACE, AND 8'-5" CLEAR BETWEEN STUD ON THE INTERIOR BEHIND SINGLE SIDED WALL HUNG TOILETS.
- PROVIDE A 1'-6" WIDE CHASE FROM EXTERIOR FACE TO EXTERIOR FACE, AND 11" CLEAR BETWEEN STUD ON THE INTERIOR BEHIND DOUBLE SIDED WALL HUNG TOILETS.
- PROVIDE 6'-5" CLEAR BETWEEN STUDS AT URINAL HANGERS.
- PROVIDE 7" CLEAR BETWEEN STUDS AT LAVATORIES.
- PROVIDE A 6" STUD MIN. BEHIND TOILET AT MOUNTED TOILET.
- FOR SWINGING DOORS, THE HINGE SIDE OF THE DOOR JAMB SHALL BE LOCATED 4" FROM THE ADJACENT PERPENDICULAR WALL, UNLESS NOTED OTHERWISE.
- PARTITION TYPES AND FIRE RESISTIVE RATINGS INDICATED ON A WALL ARE TO BE CONTINUOUS FOR THE LENGTH AND HEIGHT OF A PARTITION.
- OPENINGS IN A RATED WALL, FLOOR CEILING AND ROOF ASSEMBLIES SHALL BE SEALED WITH A FIRE RESISTANT JOINT SYSTEM OR PROTECTED WITH A FIRE RATED CHASE.
- MAINTAIN THE FIRE RATING OF CONSTRUCTION AROUND CABINETS, PANELS, AND BOXES RECESSED IN FIRE RATED WALL, FLOOR, AND CEILING ASSEMBLIES.
- ALL ELEVATOR LOBBIES WITH FSAE ARE DESIGNED TO SLOPE AWAY FROM THE FSAE HOISTWAY AS REQUIRED PER SBC A03.6.12. PLEASE REFER SHEET SERIES A42-00 AND A42-01 FOR ENLARGED ELEVATOR PLANS AND DETAILS. ELEVATOR LOBBY DOORS WILL HAVE 3/4" UNDERCUT TO ALLOW WATER TO DRAIN AWAY FROM FSAE LOBBY.
- ALL DRAINS AT PARKADE LEVELS TO BE SET 3/4" BELOW FLOOR ELEVATION.

**PLAN LEGEND**

SYMBOL	DESCRIPTION	SYMBOL	DESCRIPTION
	EXISTING FEATURE TO REMAIN		EXTERIOR ELEVATION TAG
	1-HOUR RATED WALL		WALL SECTION TAG
	2-HOUR RATED WALL		BUILDING SECTION TAG
	3-HOUR RATED WALL		ENLARGED PLAN TAG
	DOOR TAG REF: A62-0X SERIES FOR DOOR SCHEDULE.		
	PARTITION TAG REF: A61-0X SERIES FOR CHARTS.		

**PARKING PLAN  
LEVEL P1 TO LEVEL P4 GENERAL NOTES**

- MINIMUM CLEAR HEIGHT OVER PORTIONS OF PARKING LEVELS IS 7'-0". NO VAN ACCESSIBLE PARKING ON P1 TO P4 LEVELS.
- ALL EV CHARGING STATIONS TO HAVE PROVISION FOR ADEQUATE EQUIPMENT PROTECTION, SUCH AS WHEEL STOPS OR BOLLARDS.

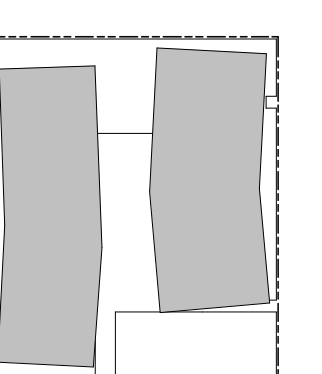


BULLETIN #1 07/29/22

1120 JOHN ST.  
SEATTLE, WA 98109

ONNI GROUP  
300-500 ROBSON ST.  
VANCOUVER BC V6B 2B7

**KEYPLAN**



**ISSUE CHART**

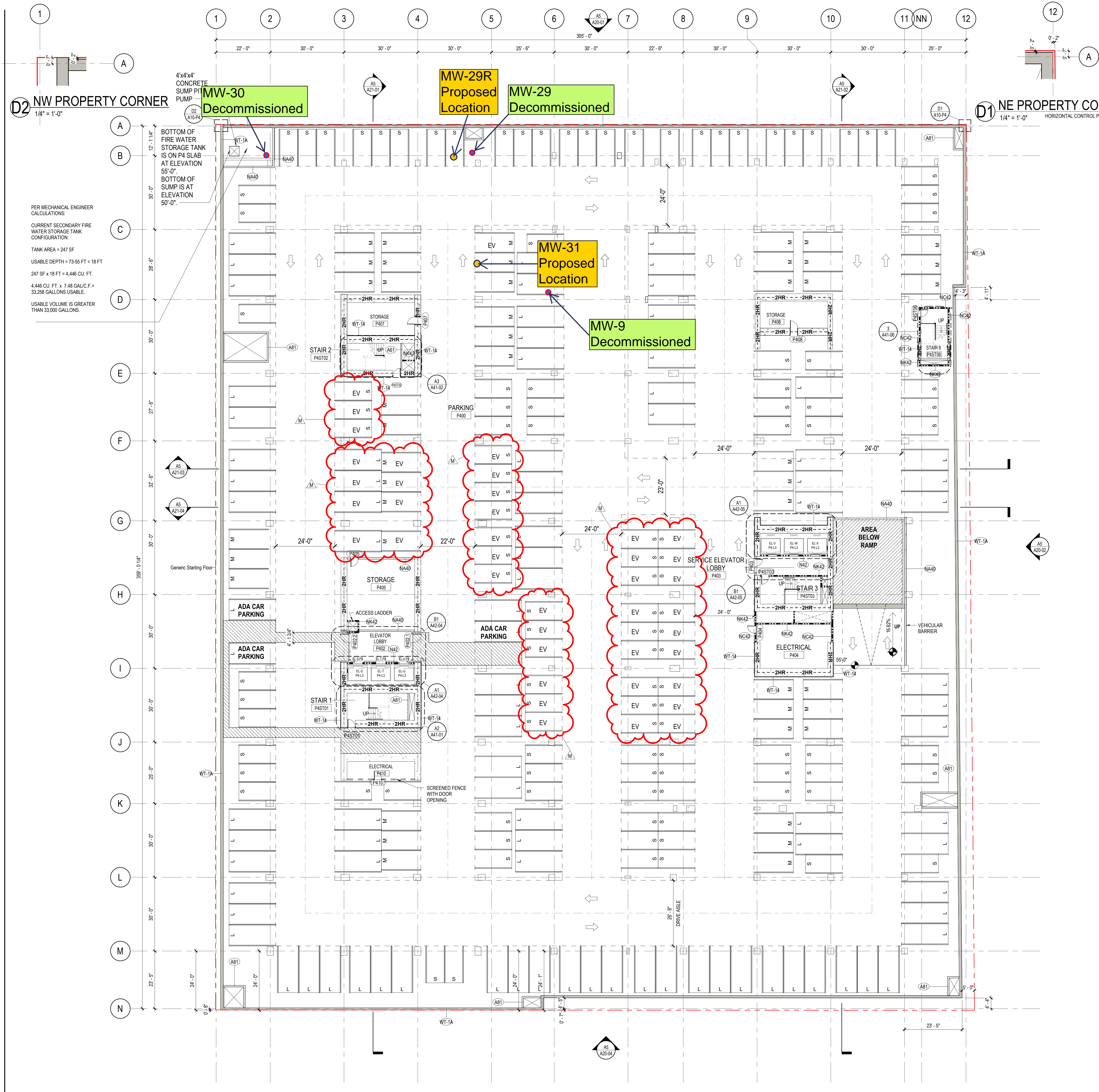
MARK	ISSUE	DATE
A	MUP CORRECTION 01	02-28-2019
B	MUP CORRECTION 02	09-18-2019
C	MUP CORRECTION 03	1-17-2020
D	MUP CORRECTION 04	08-24-2020
E	MUP CORRECTION 05	05-07-2021
F	Permit 1 - Plan Check Cycle 1	08-31-2021
G	Phase II - Permit Cycle 1	09-30-2021
H	Final Landmarks CMA	11-09-2021
I	Phase III - Permit Cycle 1	12-06-2021
J	Construction Documents	12-21-2021
K	Phase II - Permit Cycle 2	05-08-2022
L	Construction Documents - IFC	06-04-2022
M	Bulletin #1	07-29-2022

Job Number 161717  
TITLE

OVERALL FLOOR  
PLAN - LEVEL P4

SHEET NUMBER

**A10-P4**



PER MECHANICAL ENGINEER CALCULATIONS:  
CURRENT SECONDARY FIRE WATER STORAGE TANK CONFIGURATION:  
TANK AREA = 247 SF  
USABLE DEPTH = 73.55 FT = 18 FT  
247 SF x 18 FT = 4,446 CU. FT.  
4,446 CU. FT. x 7.48 GAL/CF = 33,259 GALLONS USABLE.  
USABLE VOLUME IS GREATER THAN 33,000 GALLONS.

4'x4'x4' CONCRETE SUMP PIT PUMP  
BOTTOM OF FIRE WATER STORAGE TANK IS ON P4 SLAB AT ELEVATION 55'-0".  
BOTTOM OF SUMP IS AT ELEVATION 50'-0".

**A5 OVERALL FLOOR PLAN - LEVEL P4**  
1/16" = 1'-0"

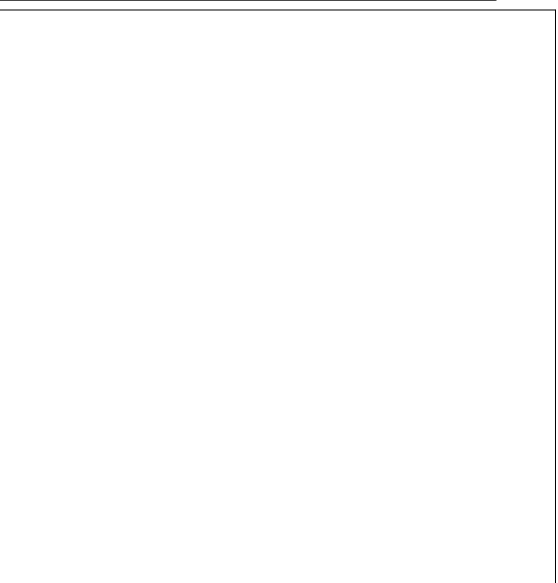


**GENERAL NOTES**

1. INSTALL WASTE AND RAINWATER PIPING AS HIGH AS POSSIBLE IN ALL SPACES
2. RUSHING DRAWINGS DEFINE THE DESIGN INTENT AND PROJECT SCOPE. THE PC IS RESPONSIBLE FOR DETERMINING FINAL PIPE ROUTING AND FINAL COORDINATION WITH ALL TRADES, STRUCTURAL DRAWINGS, AND THE CEILING HEIGHTS SHOWN IN THE ARCHITECTURAL PLANS. RUSHING'S DRAWINGS ARE NOT INTENDED TO BE USED AS INSTALLATION DRAWINGS. THE CONTRACTOR WILL PRODUCE COORDINATED SHOP DRAWINGS WHICH WILL BE SUBMITTED FOR DESIGN TEAM REVIEW PRIOR TO CONSTRUCTION.
3. ALL RAINWATER PIPING TO BE SIZED FOR 1/8" SLOPE UNLESS OTHERWISE NOTED.
4. INSTALL WASTE & VENT PIPING PER UPC REQUIREMENTS FOR EXPANSION AND CONTRACTION.
5. DO NOT INSTALL PIPING WITHIN 24" OF END OF STRUCTURAL SHEAR WALLS.
6. PROVIDE IMPACT PROTECTION FOR PLUMBING PIPING SUBJECT TO DAMAGE FROM VEHICLE TRAFFIC (TYP.)
7. ALL PIPE MATERIALS AND SPECIFICATIONS ARE PER DESIGN BUILD PLUMBING CONTRACTOR DESIGNER AND MUST CONFORM WITH THE UNIFORM PLUMBING CODE (UPC). POLYVINYLCHLORIDE (PVC) IS NOT AN ALLOWABLE PIPE MATERIAL AND WILL NOT BE INSTALLED ON ANY SCOPE OF THE PROJECT SITE.
8. CLEANOUTS SHALL BE PROVIDED FOR 2018 UPC SECTION 707.4 WHICH SHALL INCLUDE, BUT IS NOT LIMITED TO: BUILDING DRAINS AND BRANCHES, RUNS LONGER THAN 100', ALL SINKS, ALL URINALS, ALL HORIZONTAL FIXTURE BRANCH LINES LONGER THAN 5', AND AT ALL AGGRAGATE CHANGES IN DIRECTION EXCEEDING 135°. CONTRACTOR SHALL COORDINATE WITH AHJ TO ENSURE ALL REQUIRED CLEANOUTS HAVE BEEN PROVIDED. FINAL CLEANOUT LOCATIONS ARE TO BE INDICATED ON THE SHOP DRAWINGS FOR RUSHING REVIEWER.
9. CONDENSATE ROUTING IS NOT COMPLETE. CONDENSATE TO BE PROVIDED FROM HVAC AIR CONDITIONING EQUIPMENT AS WELL AS RISERS FOR FUTURE EQUIPMENT BY TENANTS. SIZING OF CONDENSATE SHALL BE BASED ON TONNAGE AND ROUTED TO AN OPEN RECEPTOR FOR INDIRECT CONNECTION.

**SHEET NOTES**

**PHSKC STAMP**



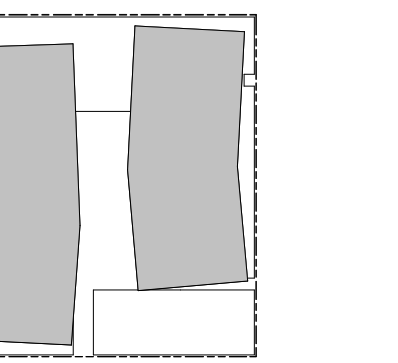
**PROJECT**

1120 JOHN ST.  
SEATTLE, WA 98109

**ONNI GROUP**  
300-500 ROBSON ST.  
VANCOUVER BC V6B 2B7

**RUSHING**  
Engineering - Essentials - Delivery  
1725 WESTLAKE AVE N, SUITE 300  
SEATTLE, WA 98109  
P: (206) 285-7100 F: (206) 285-7111

**KEYPLAN**



**ISSUE CHART**

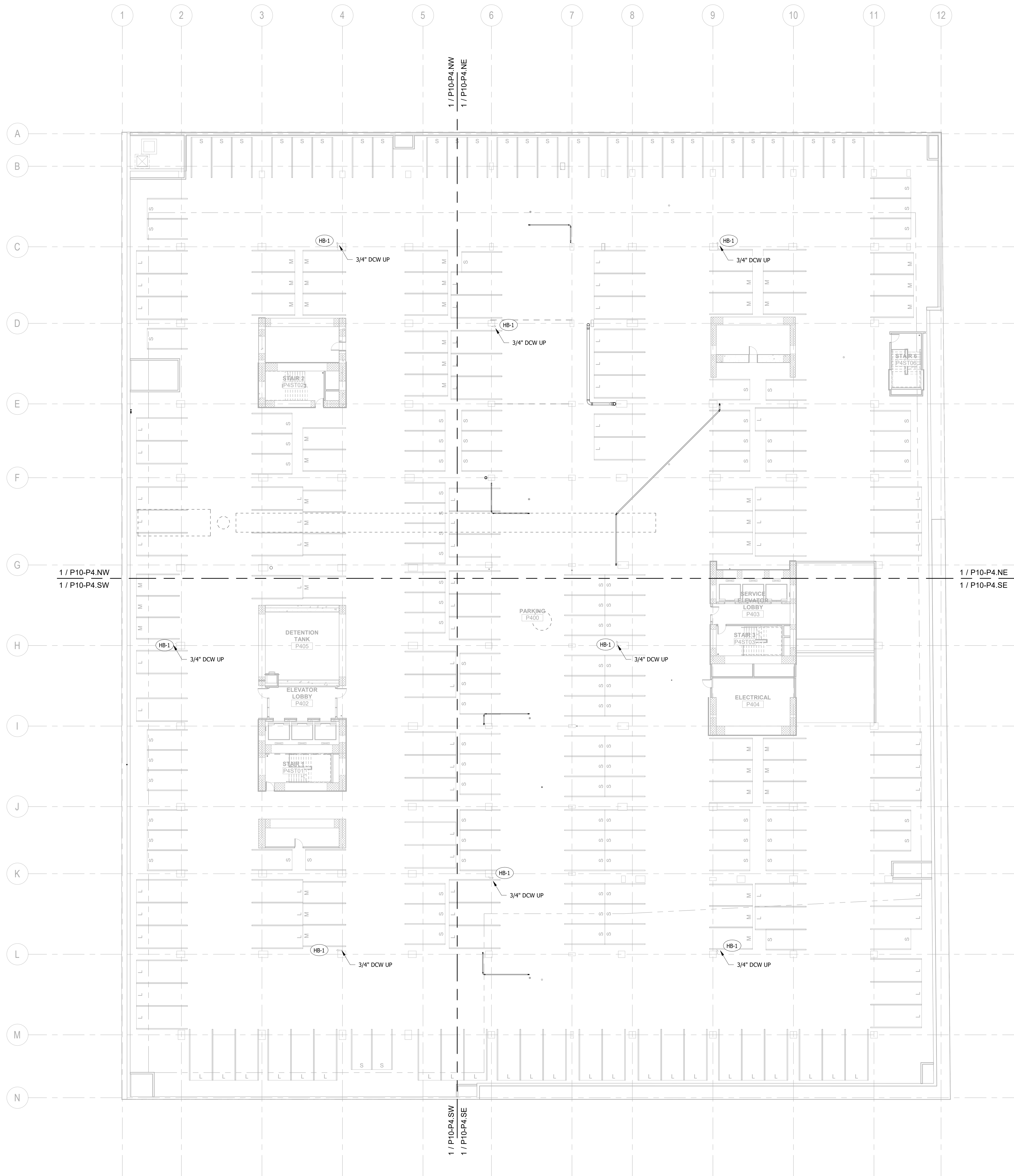
NO.	REVISION	DATE
1	CONSTRUCTION DOCUMENTS	12-21-2021
2	Construction Documents - FC	04-04-2022
3	Plumbing Permit Set	04-06-2022

Job Number 161717  
TITLE

**LEVEL P4 -  
PLUMBING PLAN  
OVERALL**

SHEET NUMBER

**P10-P4**



**1 LEVEL P4 - PLUMBING PLAN - OVERALL**  
1/16" = 1'-0"