

Appendix D

Note: The aerial photographs in this appendix are intended to be viewed electronically. The photograph dates are provided in the bookmarks of the pdf file.





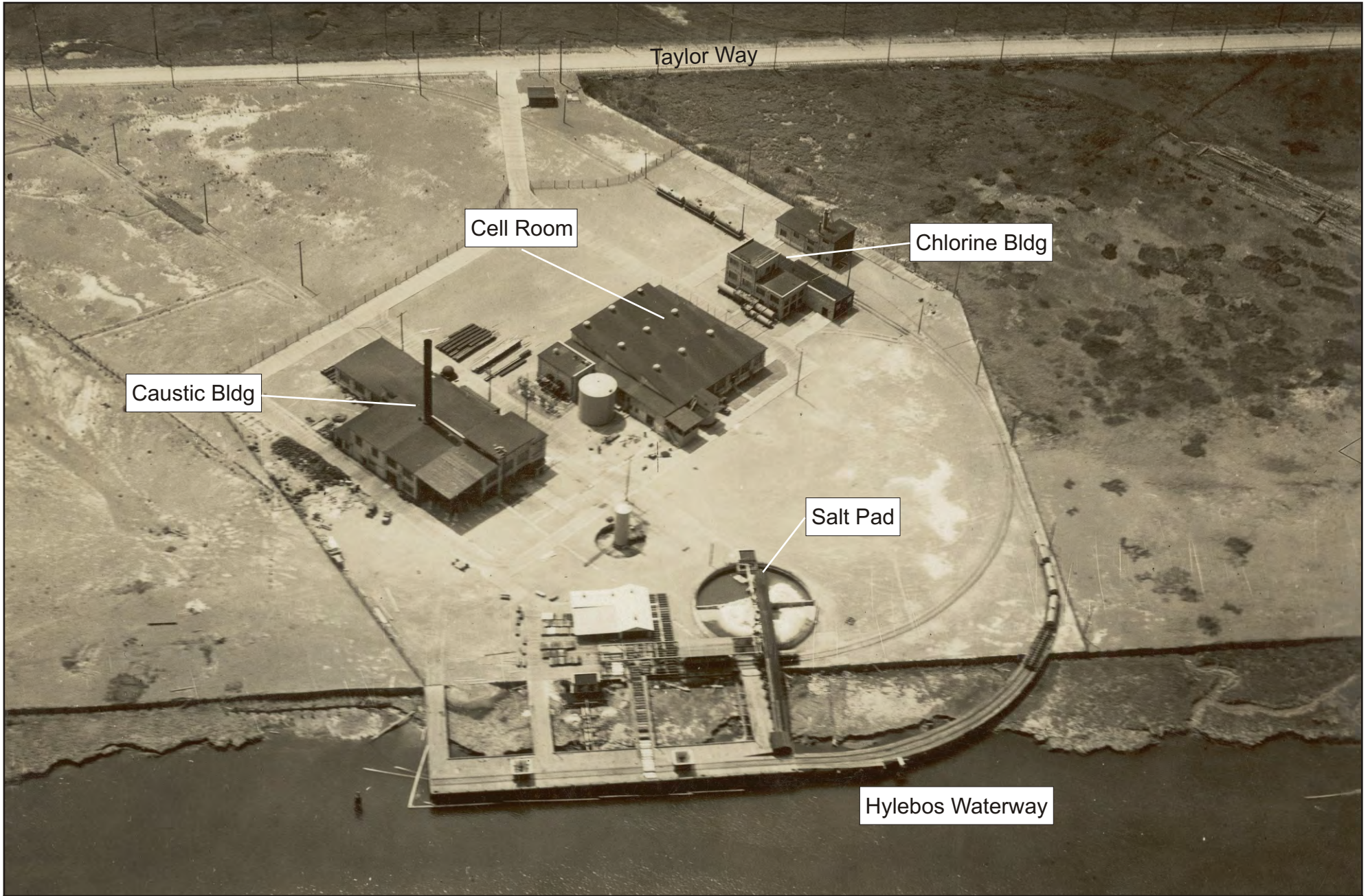
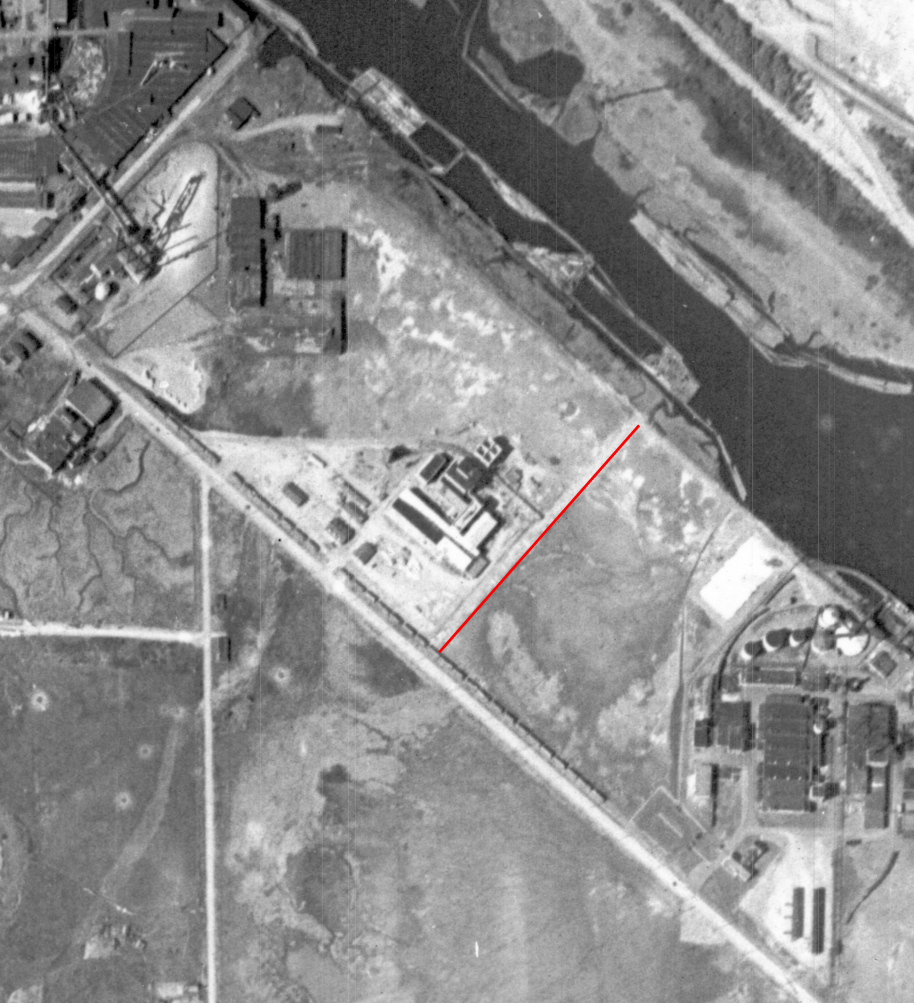


Figure 4-2. Arkema Facility 1940.



11-1-43











Link: <http://cdm17061.contentdm.oclc.org/cdm/ref/collection/p17061coll21/id/938/rec/10>

Image Information (from Tacoma Public Library Image Archives):

Description

Independent Insulation Inc. of Fife produced rock wool to be used for insulation in factories and homes. Three kinds of rock - copper slag from the Tacoma smelter, quartz silica, and basalt - were layered with coke and limestone, as a flux, and heated to 2,600 degrees Fahrenheit. Once molten the rock was combined under pressure with live steam; it shot out of a man-made volcano and into a long blowing chamber. The rock emerges from the furnace in molten globulets and the speed at which it is cooled creates its thread-like texture. (TNT 3/22/1946; 3/30/1947)

Subjects

Factories -- Fife -- 1940-1950
Independent Insulation, Inc. (Fife)

Image Date

1946-08-06

Address

2301 Taylor Way, Tacoma









Link: <http://cdm17061.contentdm.oclc.org/cdm/singleitem/collection/p17061coll21/id/18630/rec/14>

Image Information (from Tacoma Public Library Image Archives):

Description

This photograph was taken as part of a photo mural for Feltrok Insulation Company, ordered by Mr. Lybeck. Feltrok manufactured home and industrial insulations and were members of the National Mineral Wool Association and Industrial Mineral Wool Institute. C.J. Rusden was president of the company at this time. A rail line brought materials used in the company's manufacturing processes directly to the yard. The smokestacks were tall to provide cooling.

Subjects

Industrial facilities--Tacoma--1950-1960
Feltrok Insulation Manufacturing Co. (Tacoma)
Smokestacks—Tacoma

Image Date

1950-01-25

Address

2301 Taylor Way, Tacoma







Richards Studio, Tacoma

Link: <http://cdm17061.contentdm.oclc.org/cdm/singleitem/collection/p17061coll21/id/626/rec/1>

Image Information (from Tacoma Public Library Image Archives):

Description

Three unidentified employees of Feltrok Insulation Manufacturing Co. are shown on the job filling and loading bags of insulation. One man is displaying a bag of metallic blasting shot. The plant is located at 2301 Taylor Way.

Subjects

Feltrok Insulation Manufacturing Co. (Tacoma)
Factories—Tacoma

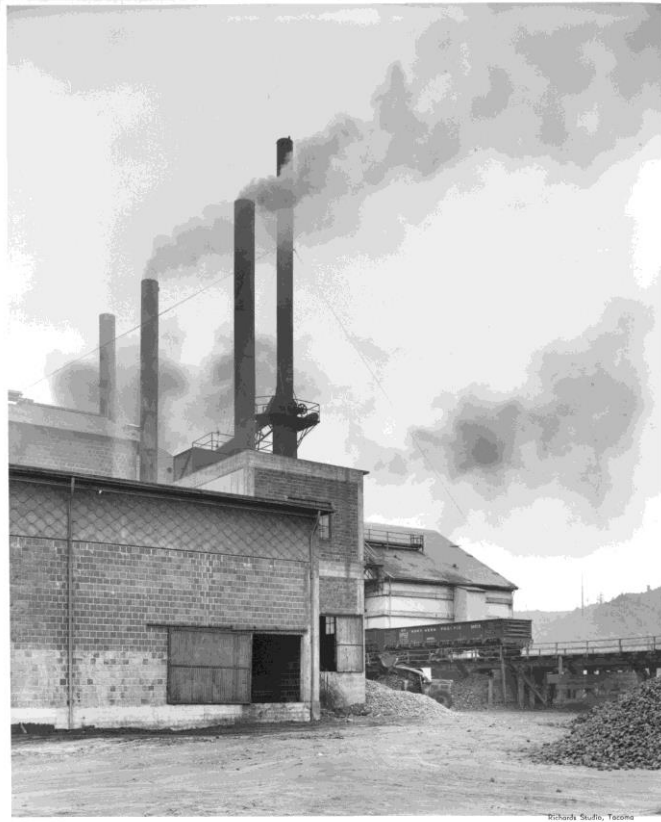
Image Date

1950-06-27

Address

2301 Taylor Way, Tacoma





Link: <http://cdm17061.contentdm.oclc.org/cdm/singleitem/collection/p17061coll21/id/989/rec/15>

Image Information (from Tacoma Public Library Image Archives):

Description

Reshot of plant showing smokestacks and slag cars. The Feltrok Insulation Manufacturing Co.'s smokestacks were in full use in a photograph taken in June, 1950. According to the 1951 Polk City Directory, C. J. Rusden was listed as president of the company which made insulation for home and industrial usage. Feltrok, with 25 employees, was purchased in July, 1952, by the American Rock Wool Corporation. (Tacoma Reporter, 7-21-52)

Subjects

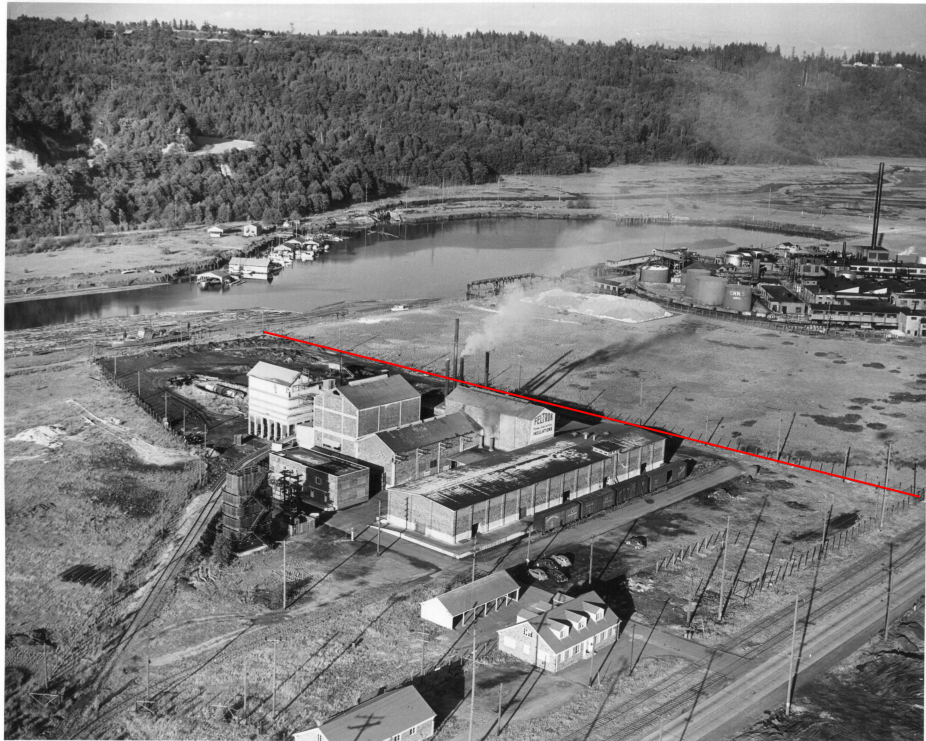
Smokestacks--Tacoma
Factories--Tacoma--1950-1960
Feltrok Insulation Manufacturing Co. (Tacoma)

Image Date

1950-06-27

Address

2301 Taylor Way, Tacoma







Richards Studio, Tacoma

Link: <http://cdm17061.contentdm.oclc.org/cdm/ref/collection/p17061coll21/id/6499/rec/21/nl/1>

Image Information (from Tacoma Public Library Image Archives):

Description

Four White trucks with trailers and a single trailer are parked at the loading dock at Feltrok Insulation Manufacturing Company. The company made insulation for home and industrial usage. In July 1952 it was announced that American Rock Wool Corporation with headquarters at Wabash, Indiana, had purchased the Feltrok plant. (The Reporter, 7/21/1952, p.3)

Subjects

Feltrok Insulation Manufacturing Co. (Tacoma)

Industrial facilities--Tacoma--1950-1960

Trucks--Tacoma--1950-1960

White trucks

Image Date

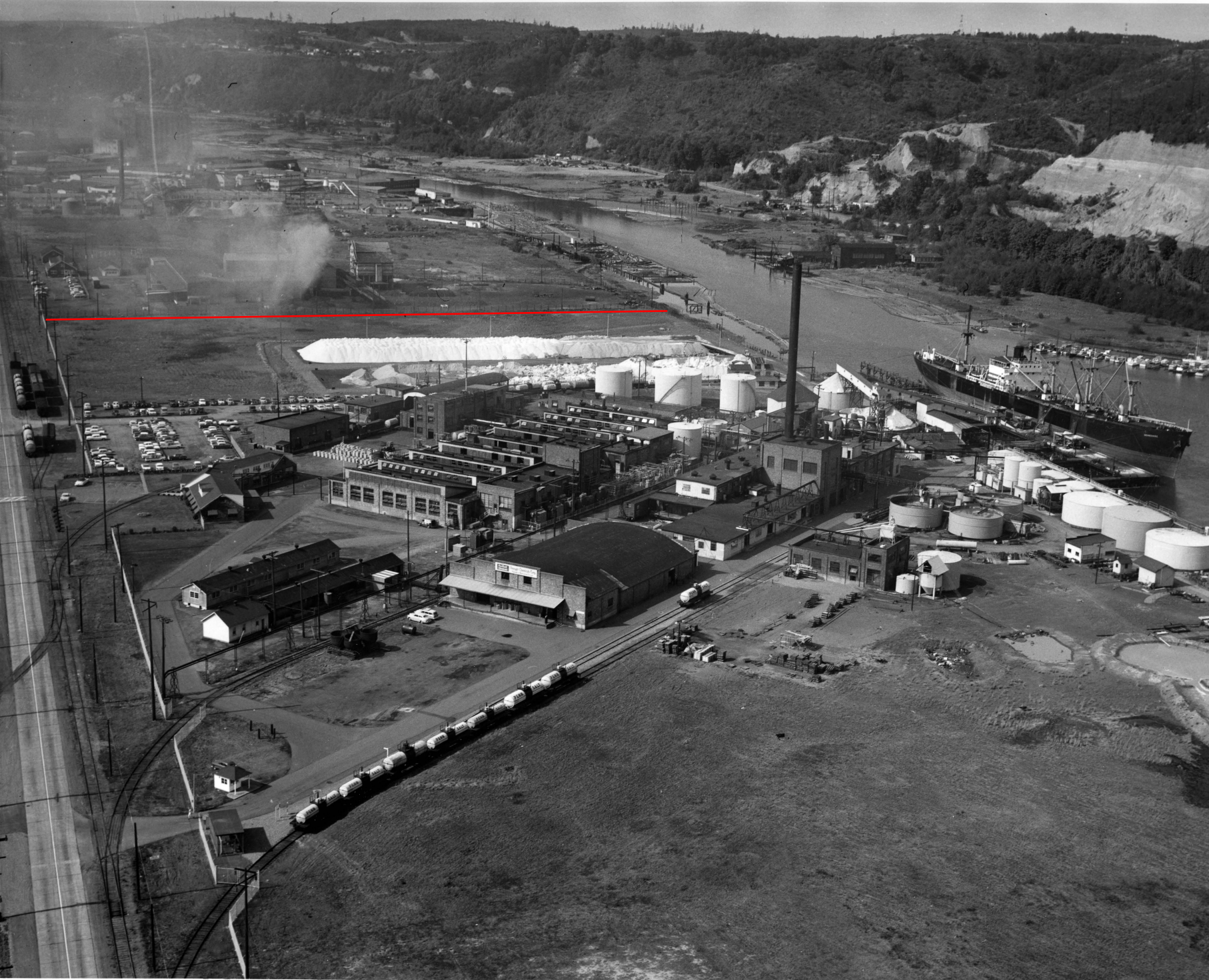
1952-02-22

Address

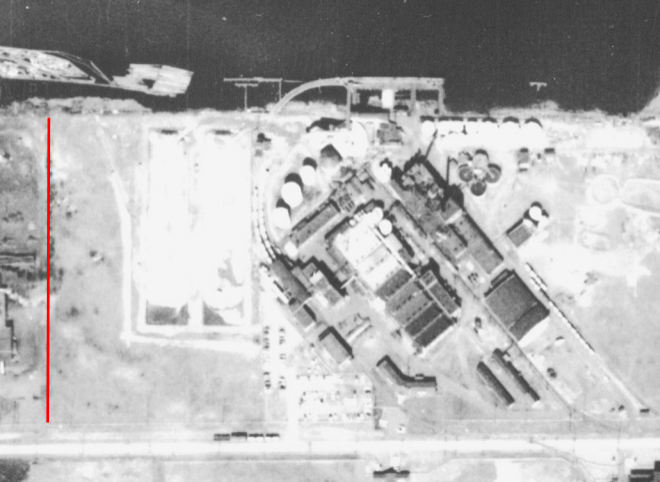
2301 Taylor Way, Tacoma



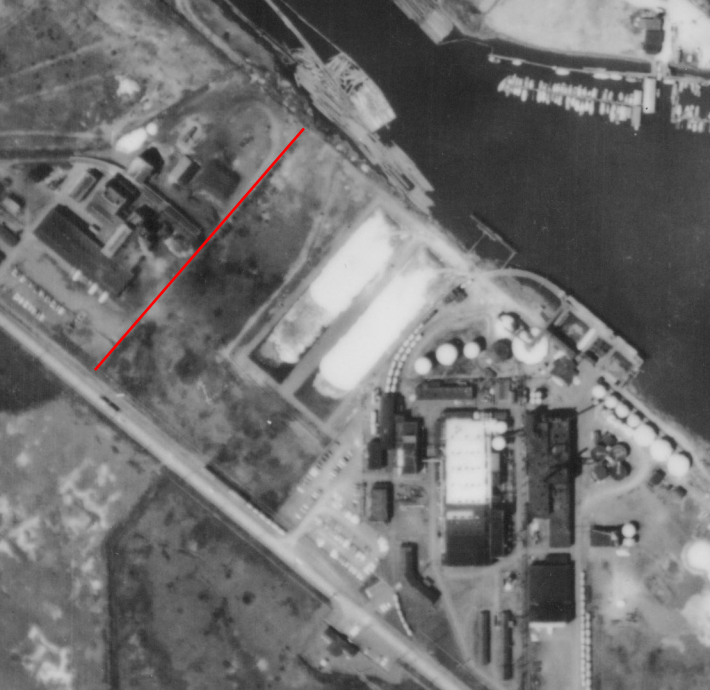






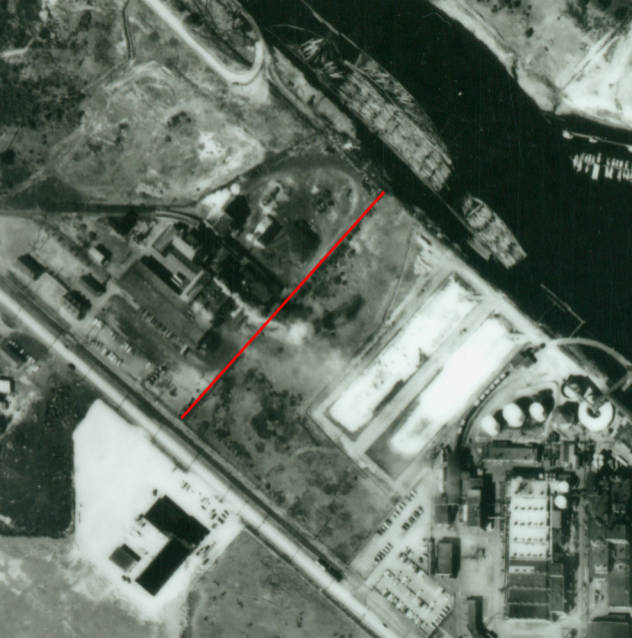






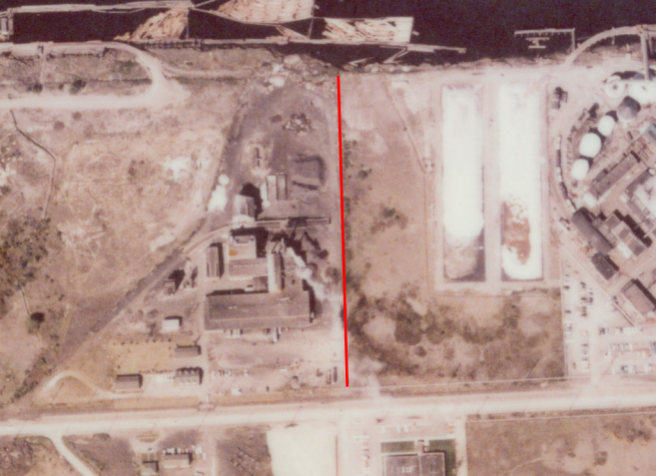












6/10/63
TACOMA, WA
Middle Coverage
1"=500' (+/-)







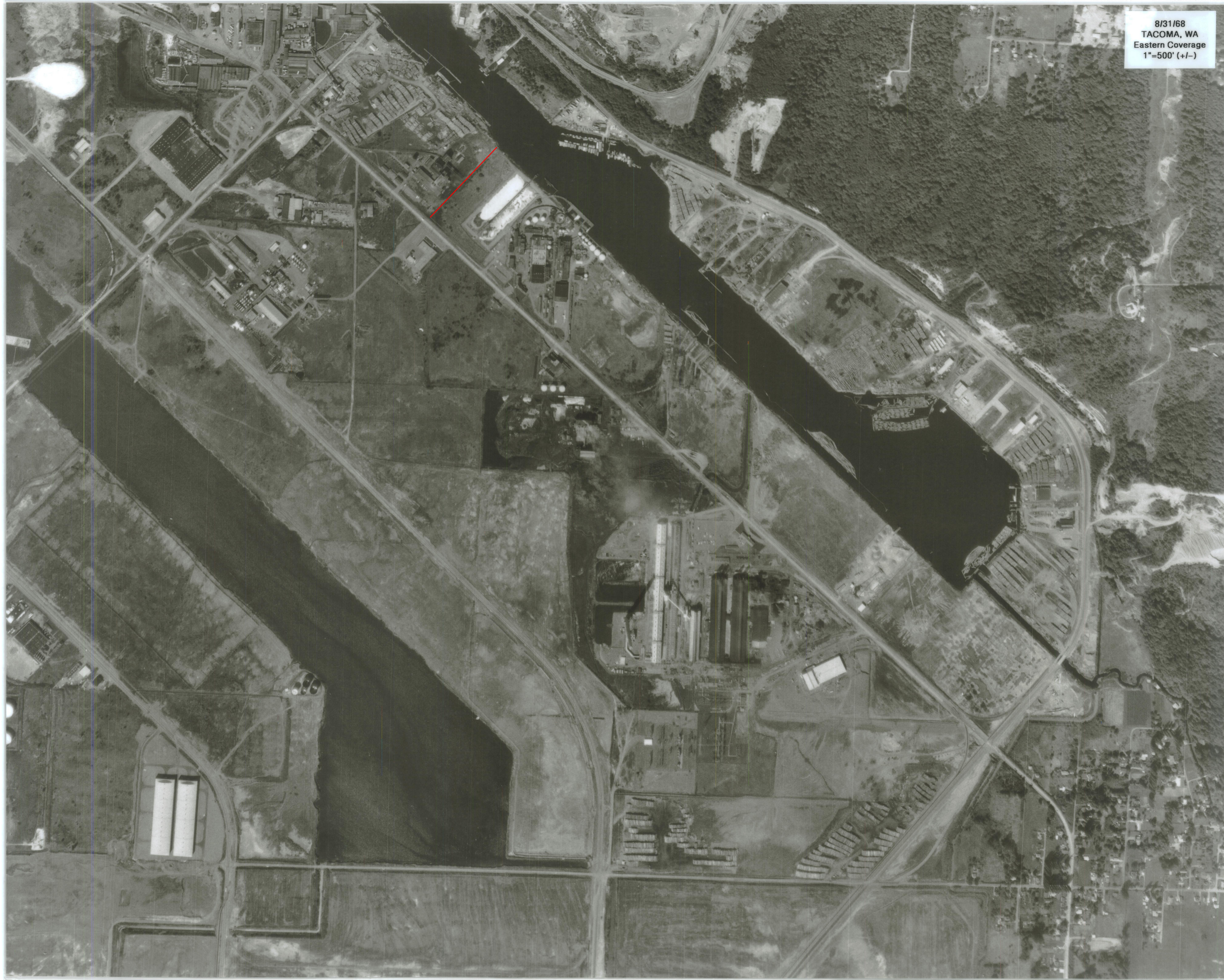




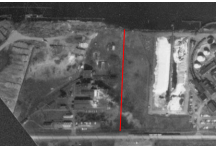
*Richards
PACIFIC*



8/31/68
TACOMA, WA
Eastern Coverage
1"=500' (+/-)

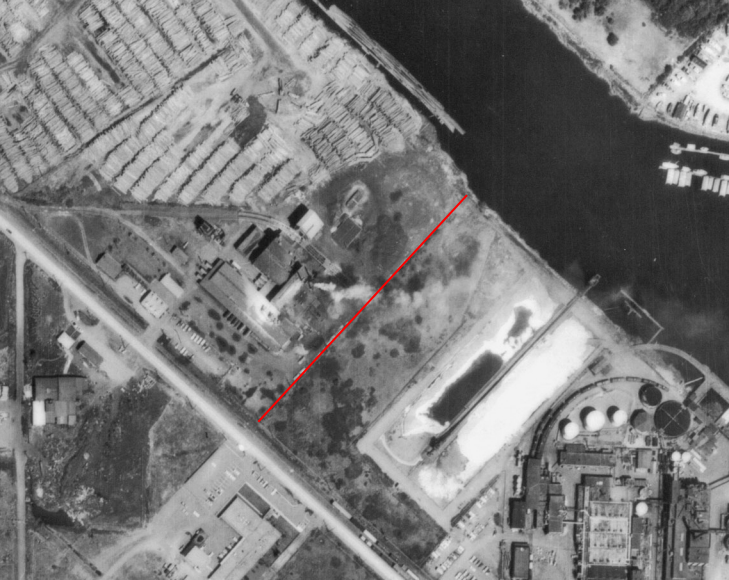












9/18/71
TACOMA, WA
Middle Coverage
1"=500' (+/-)

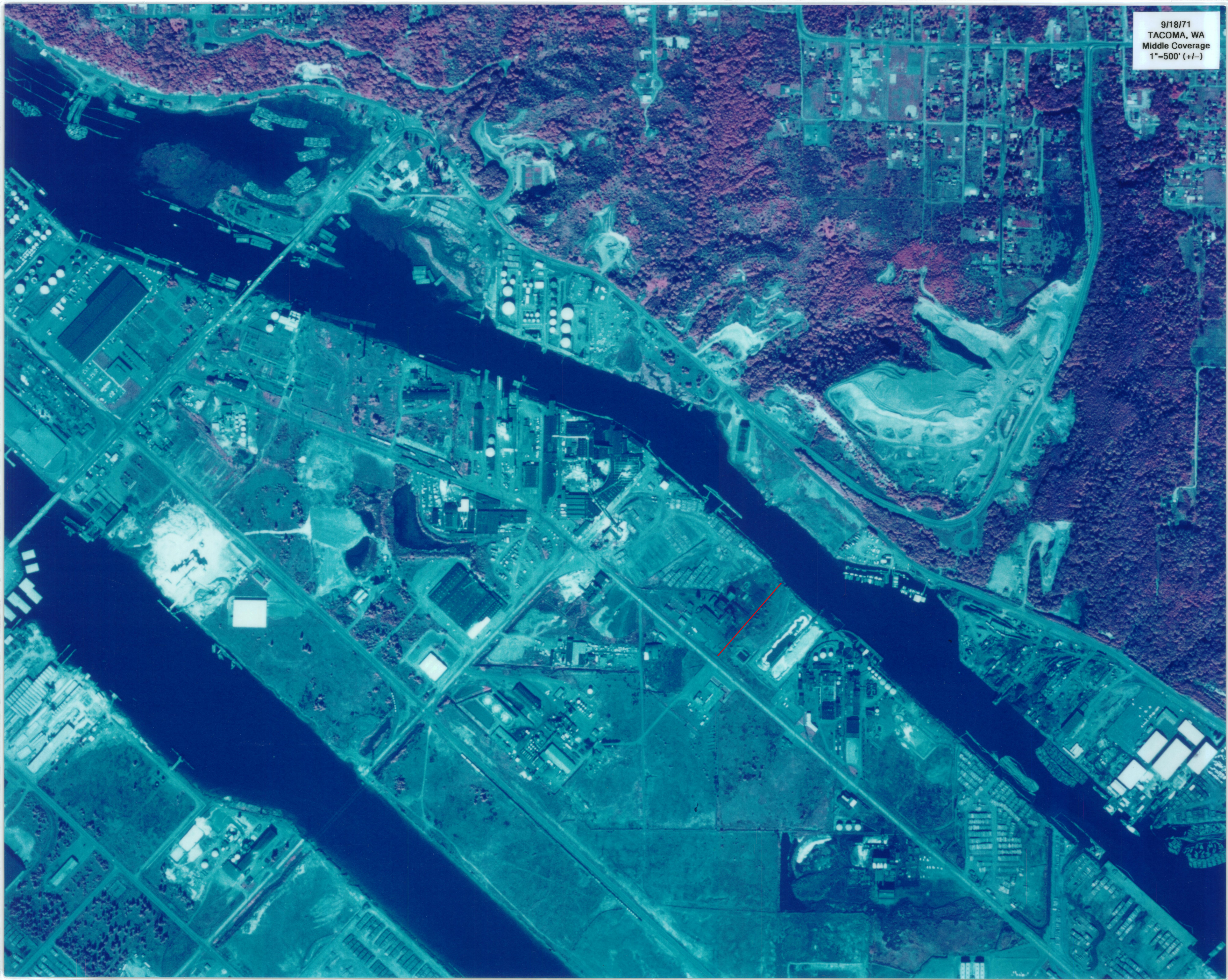




Figure 4-4. Arkema Facility 1972.

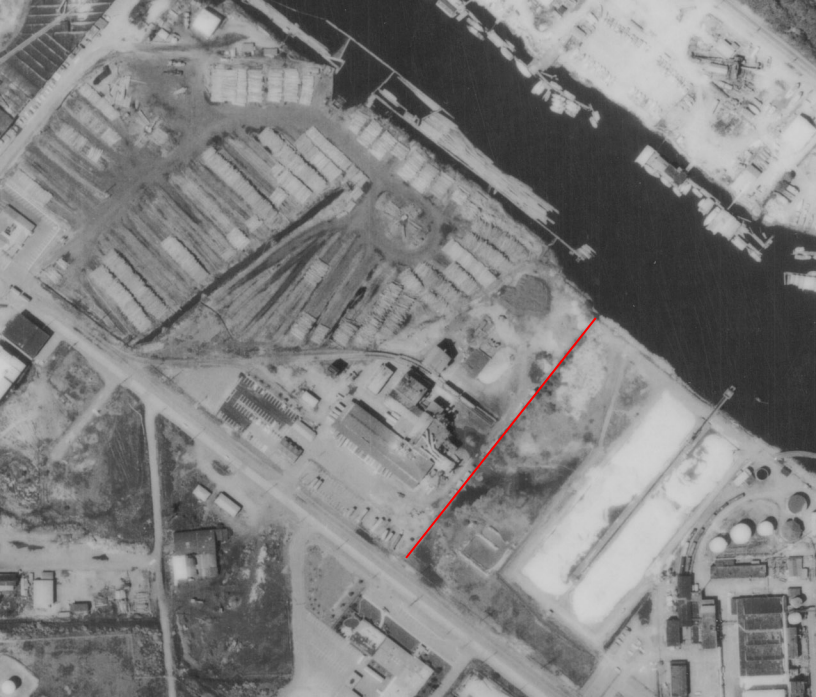


Richards
1968











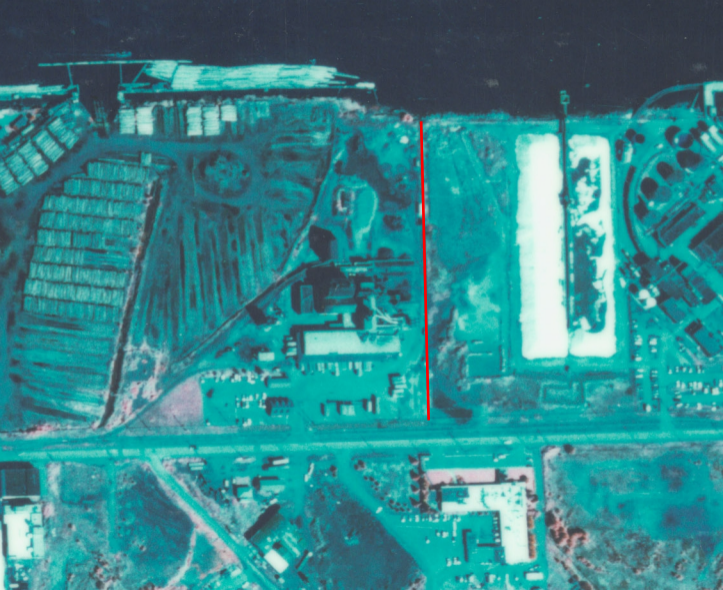


















N 712,000

N 711,000

N 710,000


E 1,632,000

E 1,633,000

E 1,634,000



PORT OF TACOMA
 P.O. BOX 1837 TACOMA, WASHINGTON 98401
 (206) 383-5841

CONSULTANTS
 **WALKER AND ASSOCIATES, INC.**
ARCHITECTS ENGINEERS PLANNERS AND ENVIRONMENTAL SCIENTISTS

SEAL

APPROVED

 CHIEF ENGINEER DATE

DRAWN BY DATE

 AS-BUILT BY DATE

CHECKED BY DATE

 PROJENGR. DATE

IDD
ORTHOPHOTOS
DATE OF PHOTOGRAPHY - MAY 1987

SCALE: **1" = 100'**
 SHEET No. 12 OF 31





















Image Description: Rockwool production at U.S. Gypsum in Tacoma

Image Date: 12/10/1992