

Appendix B: Map Figures

Note: Map figures B-2 through B-9 incorporate surface sediment concentration data compiled by LDWG during the 30% design of the Upper Reach sediment remedy. LDWG completed the Data Evaluation Report—Upper Reach Design Dataset on August 22, 2022, in support of the 30% Remedial Design completed on August 29, 2022. These documents can be found on [LDWG’s project library webpage](#).

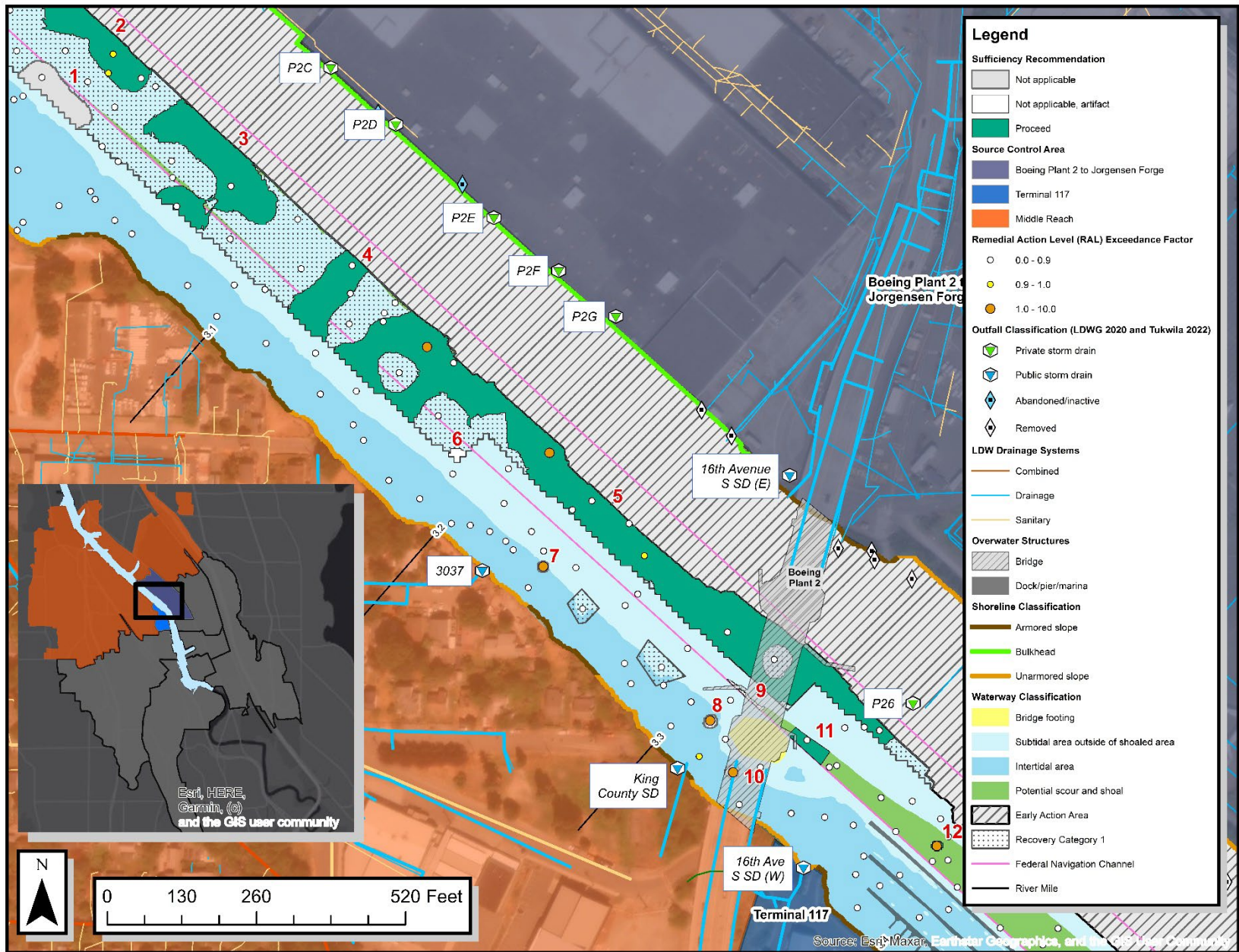


Figure B-1a: Northern Portion of the Upper Reach and Southern Portion of the Middle Reach

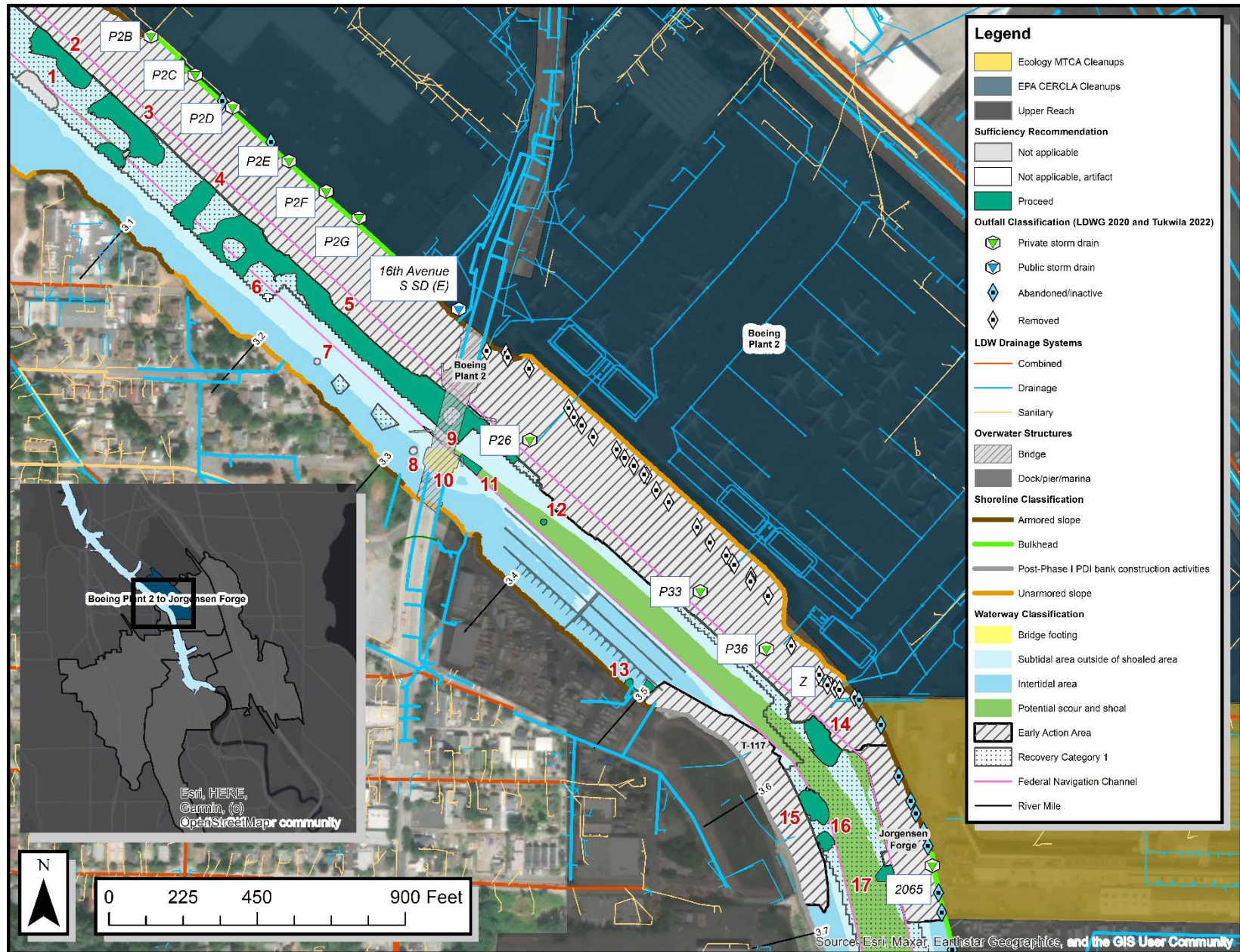


Figure B-1: Early Action Area 4: Boeing Plant 2/Jorgensen Forge Source Control Area and Features of Interest

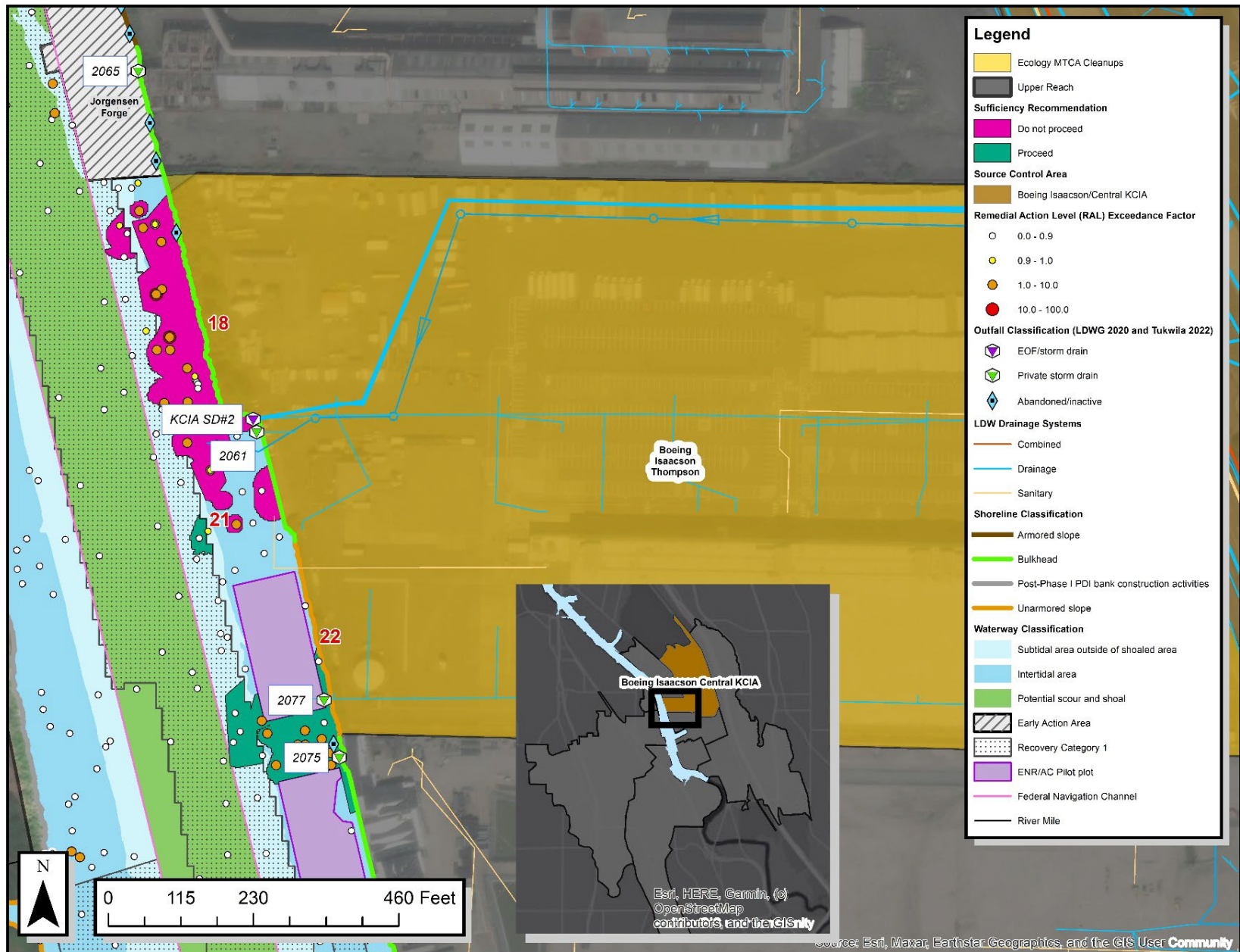


Figure B-2: Boeing Isaacson/Central King County International Airport Source Control Area and Features of Interest

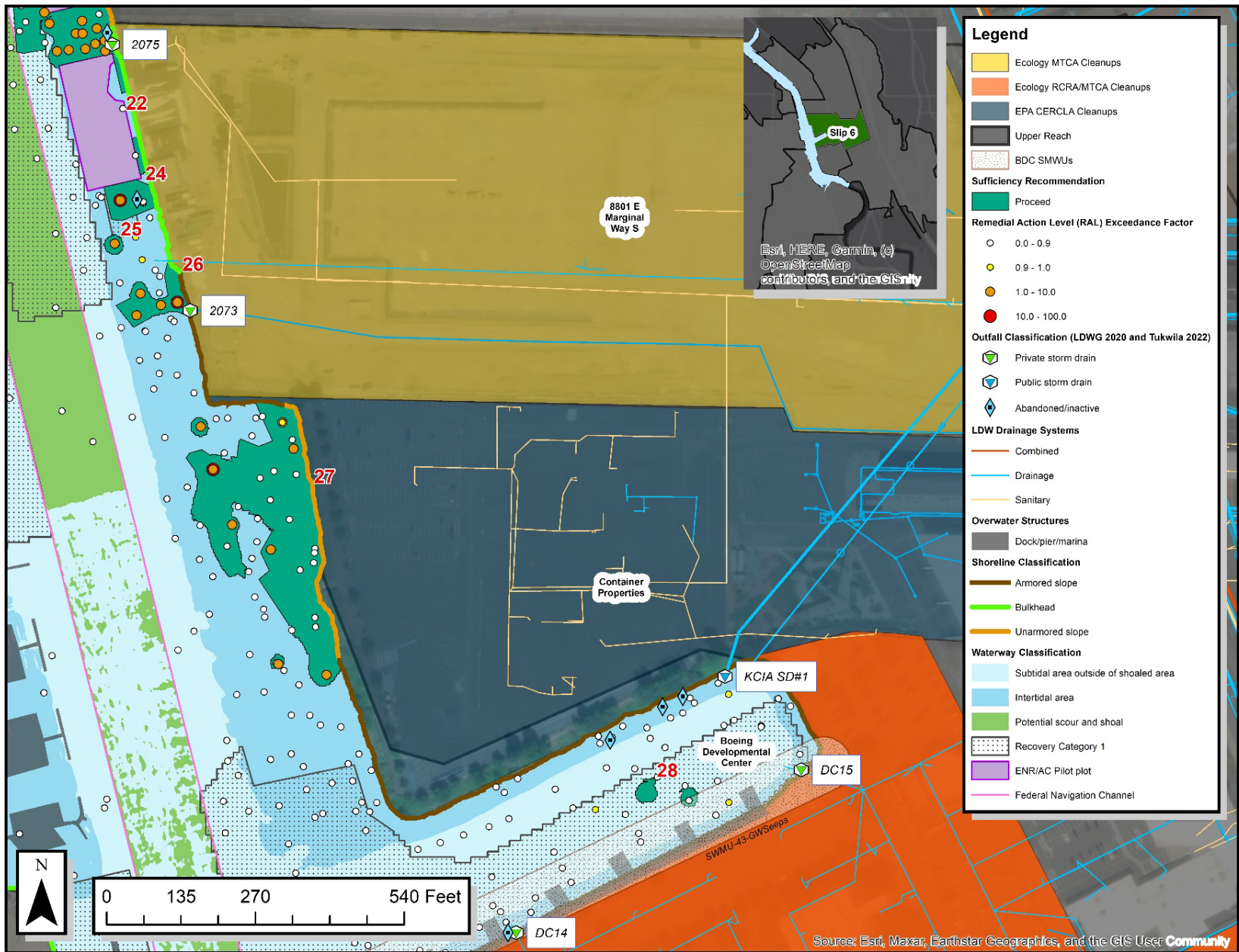


Figure B-3: Slip 6 Source Control Area and Features of Interest

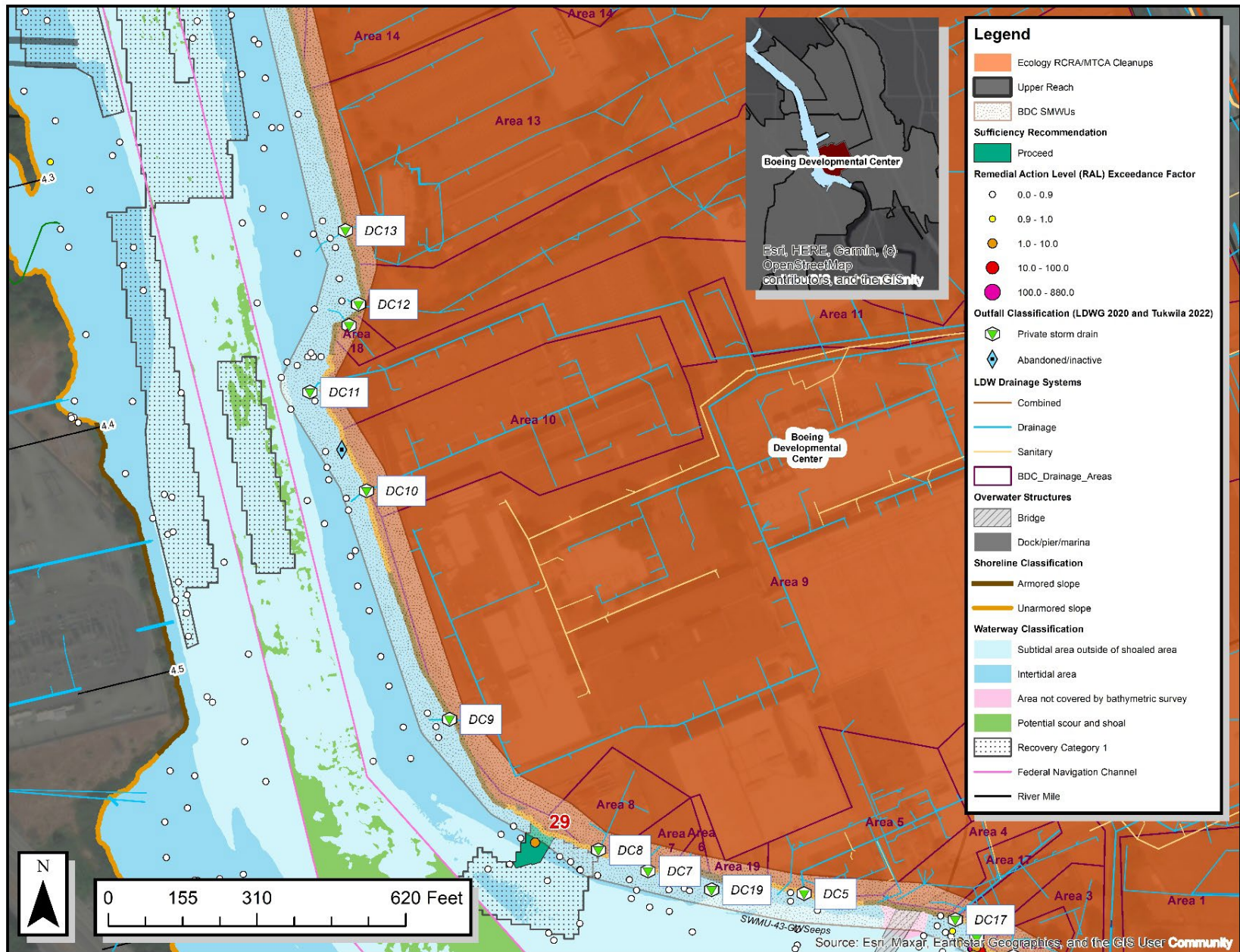


Figure B-4: Boeing Developmental Center Source Control Area and Features of Interest

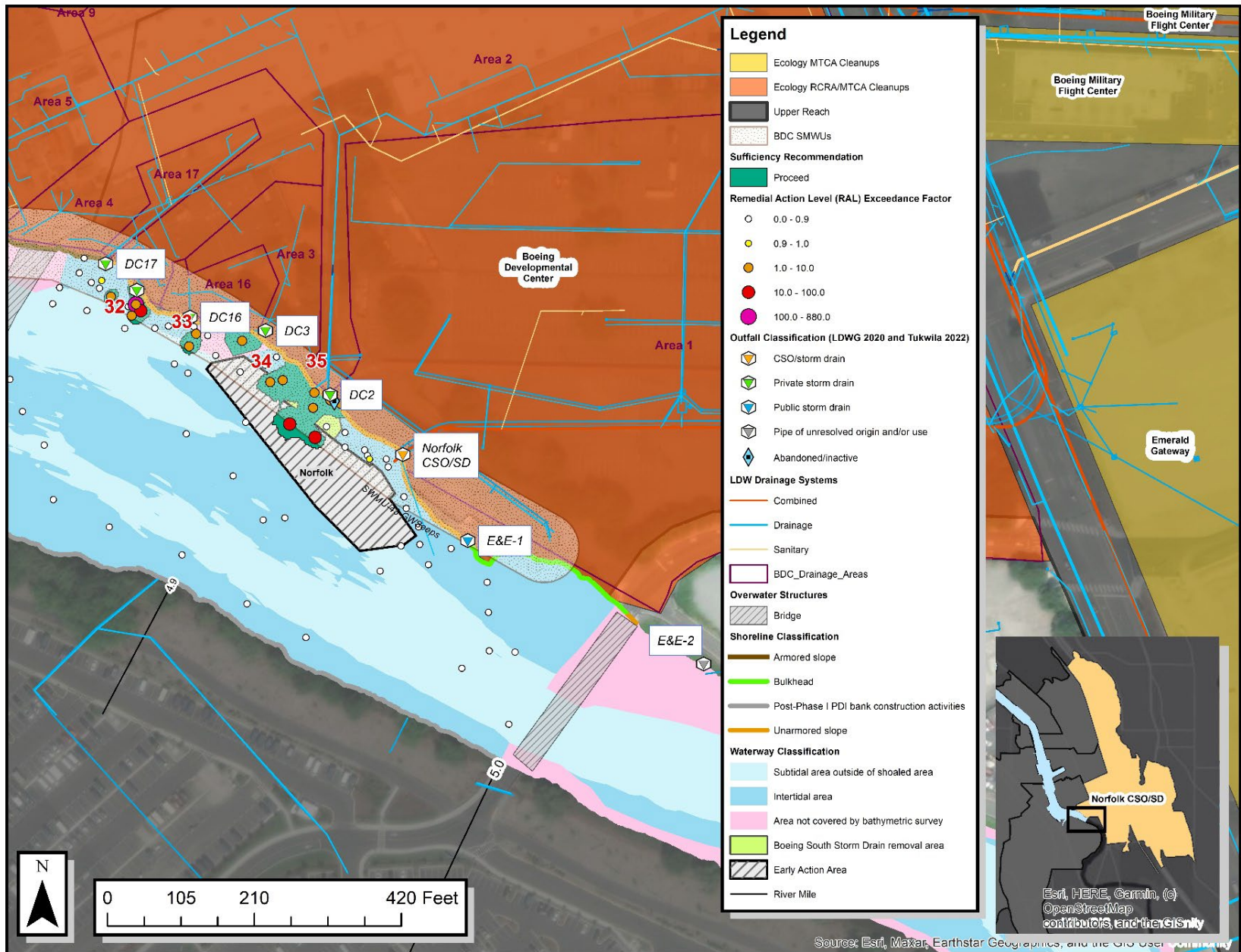


Figure B-5: Early Action Area 7: Norfolk Combined Sewer Overflow/Storm Drain Source Control Area and Features of Interest

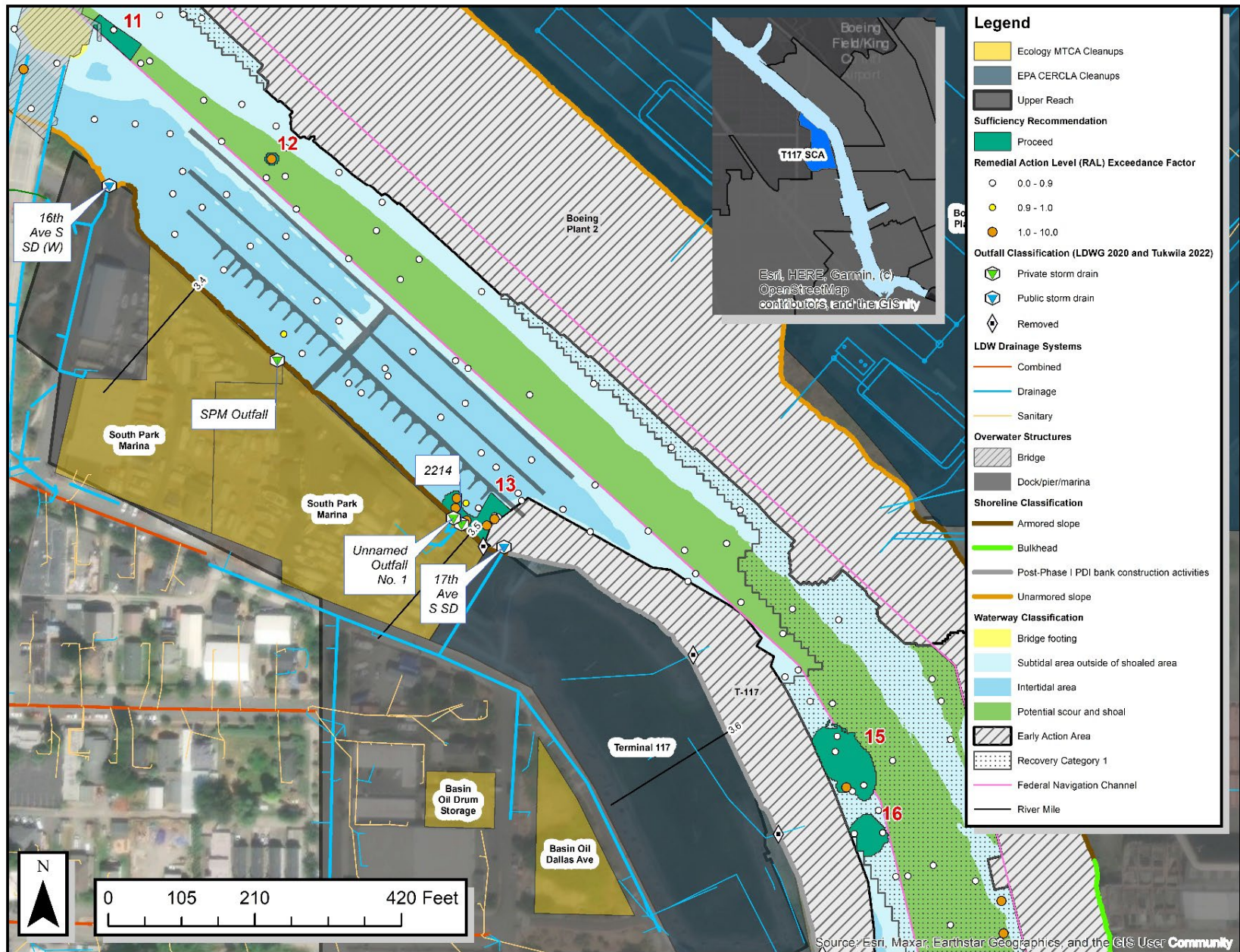


Figure B-6: Northern Portion of Early Action Area 5: Terminal 117 Source Control Area, with Features of Interest

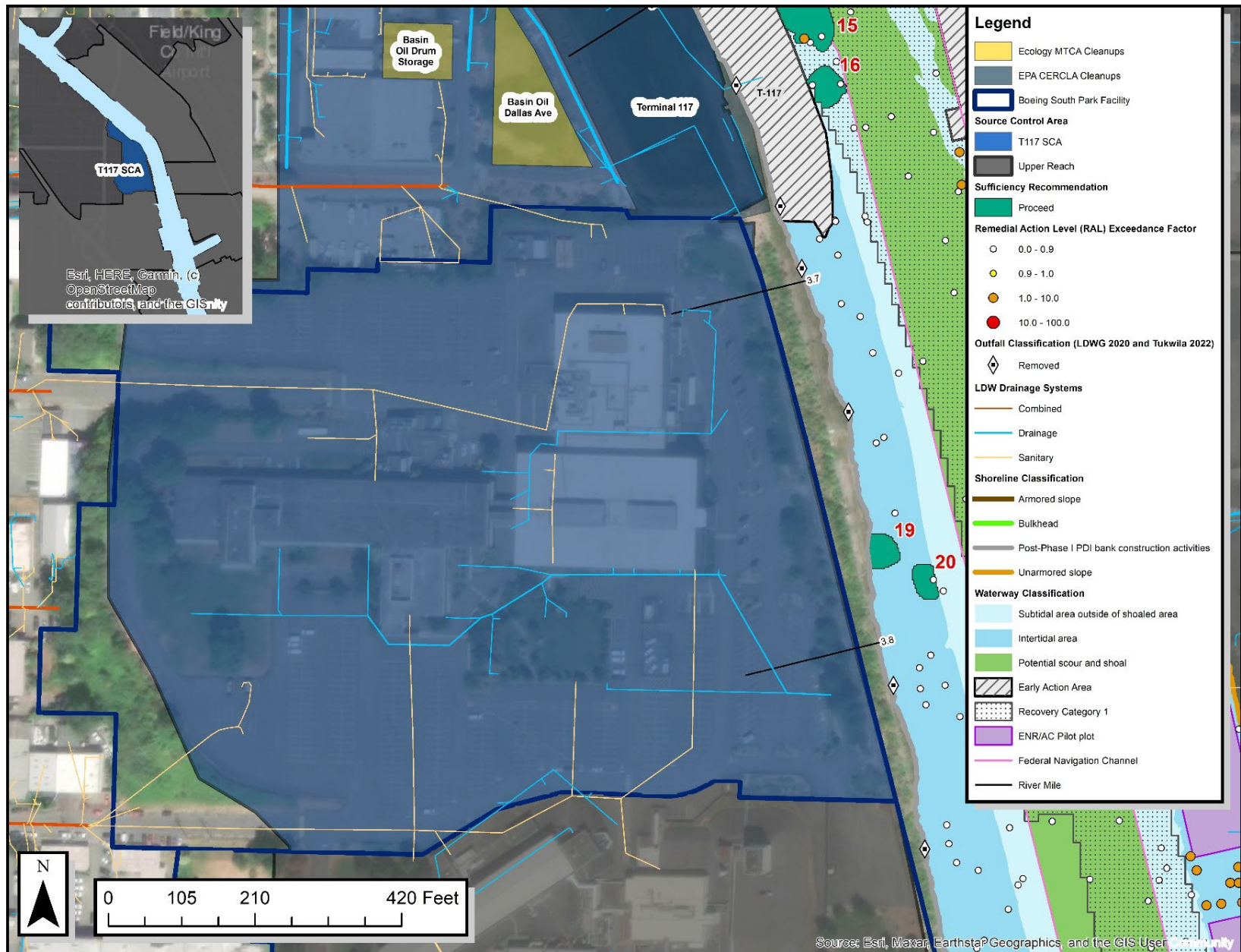


Figure B-7: Southern portion of the Early Action Area 5: Terminal 117 Source Control Area, with Features of Interest

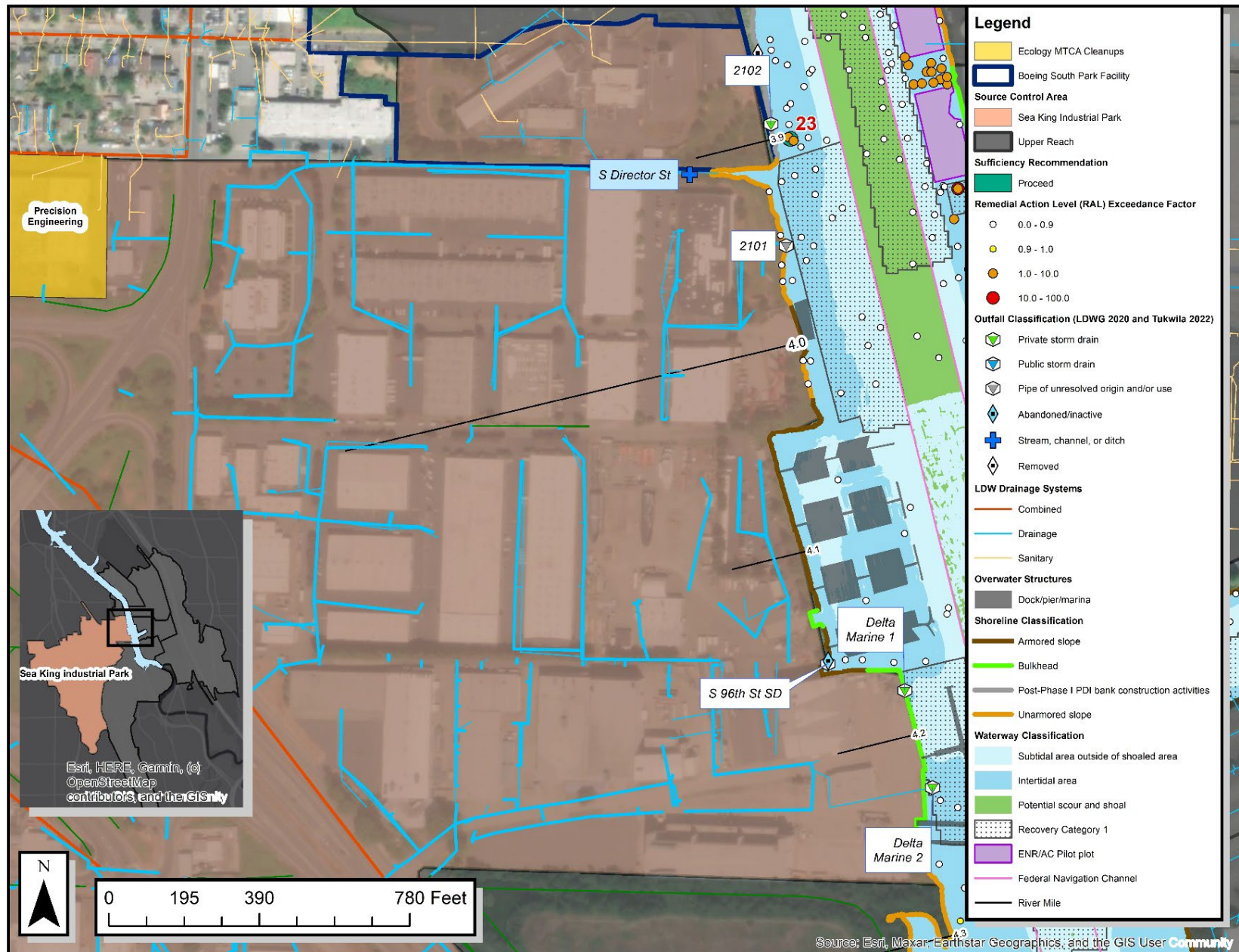


Figure B-8: Sea King Industrial Park Source Control Area and Features of Interest

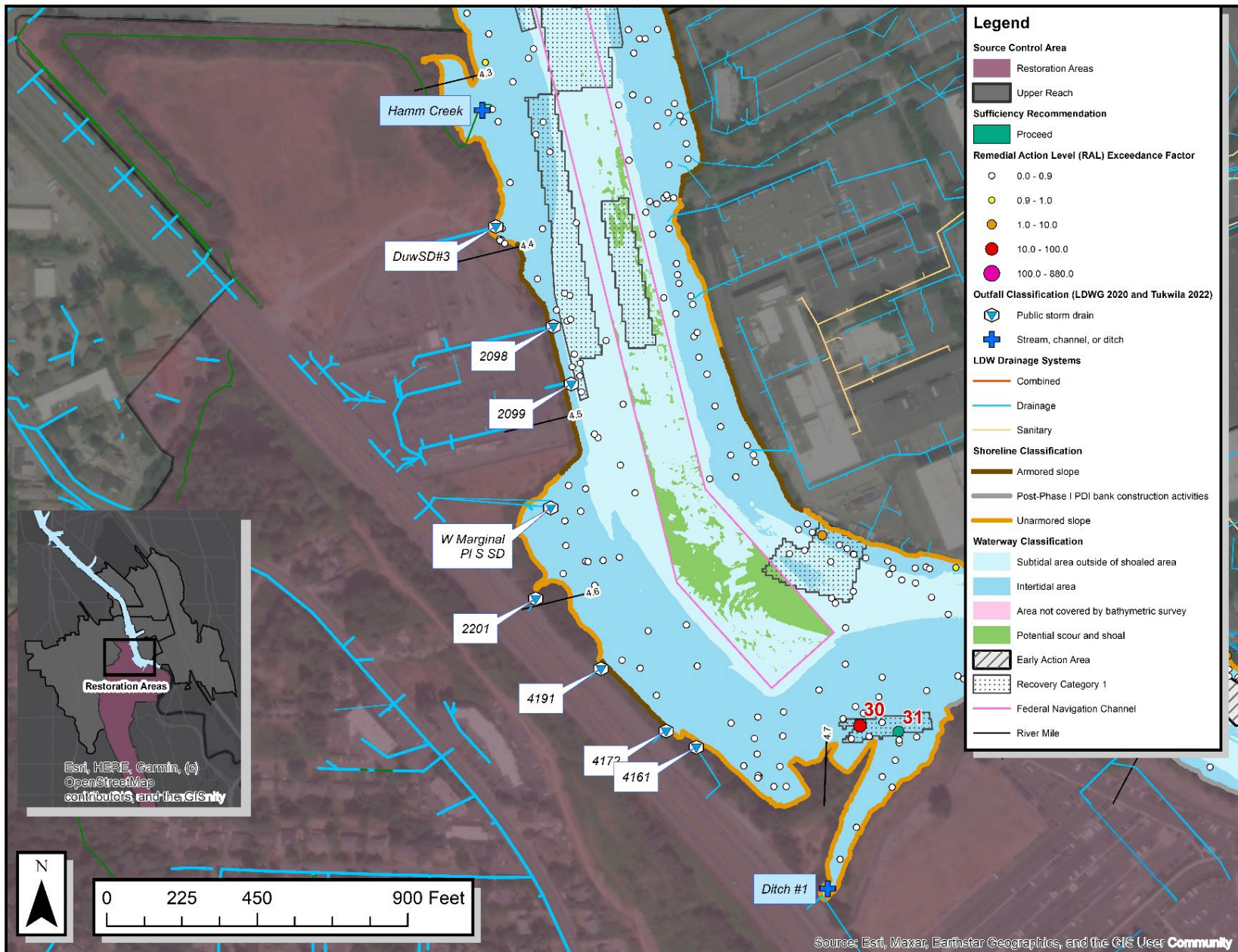


Figure B-9: Restoration Areas Source Control Area and Features of Interest

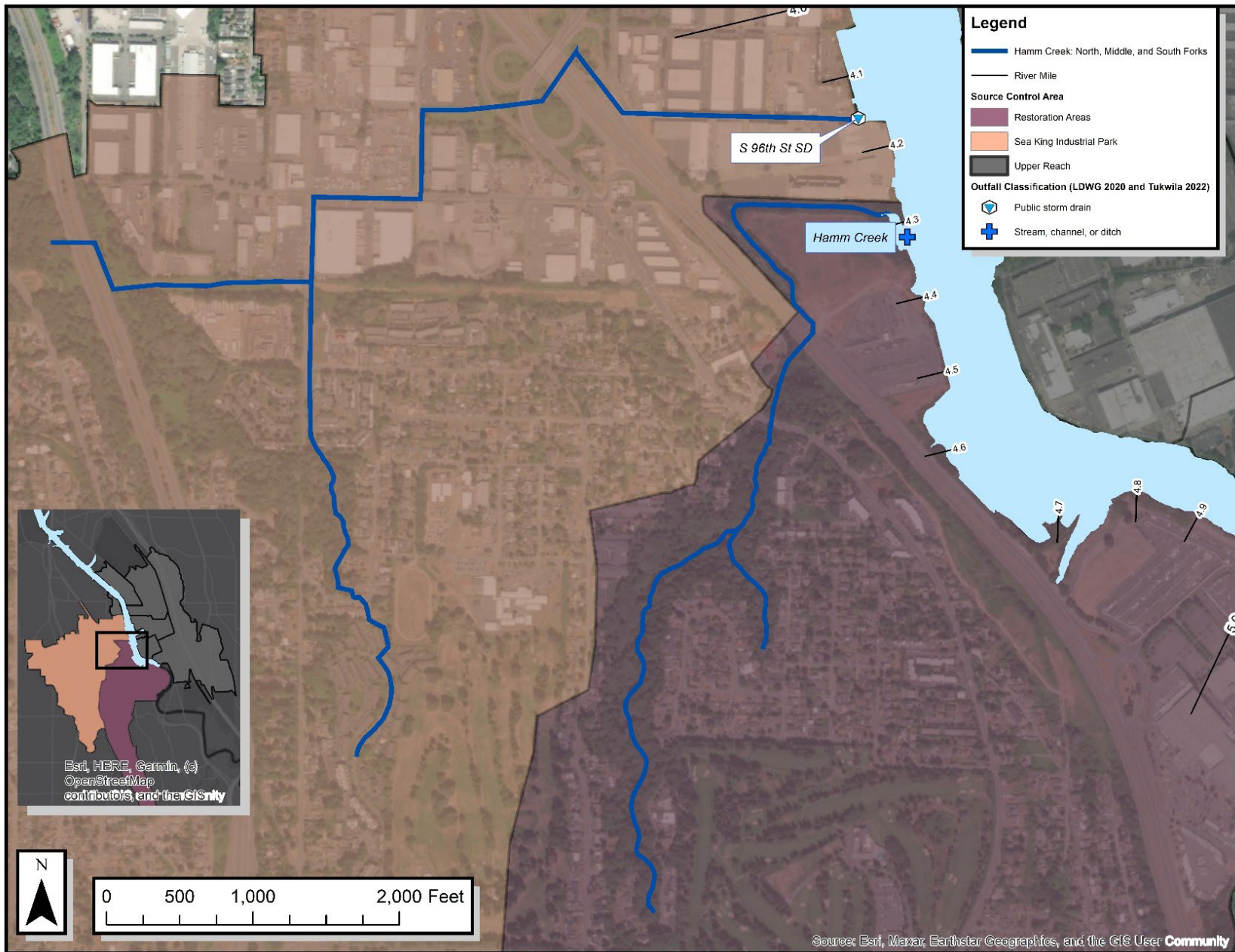


Figure B-10: Hamm Creek Discharge Locations to the LDW

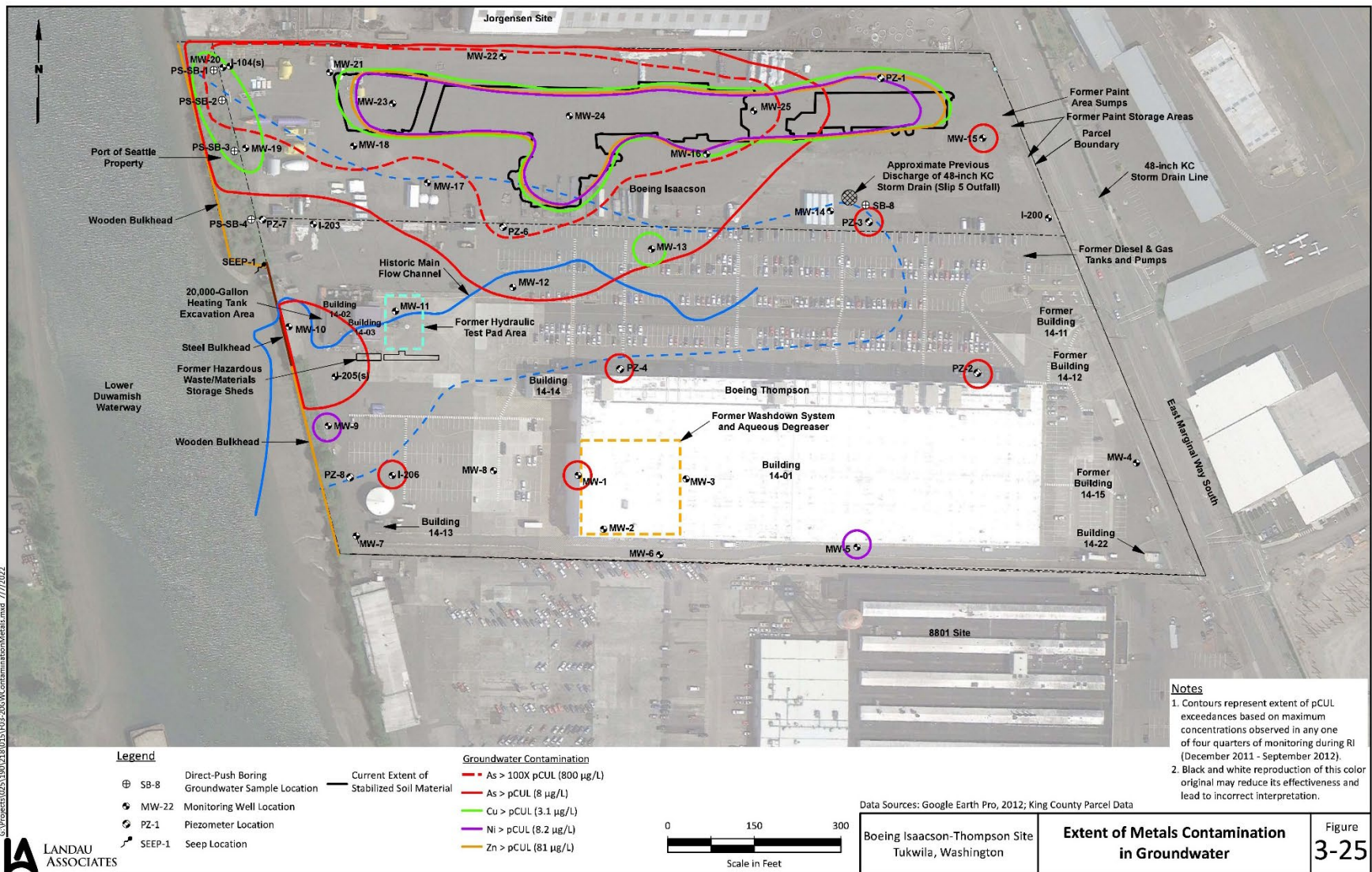


Figure BS-1: Extent of Metals Contamination in Groundwater at Boeing Isaacson Thompson Upland Cleanup Site, retrieved from the 2022 Draft Feasibility Study

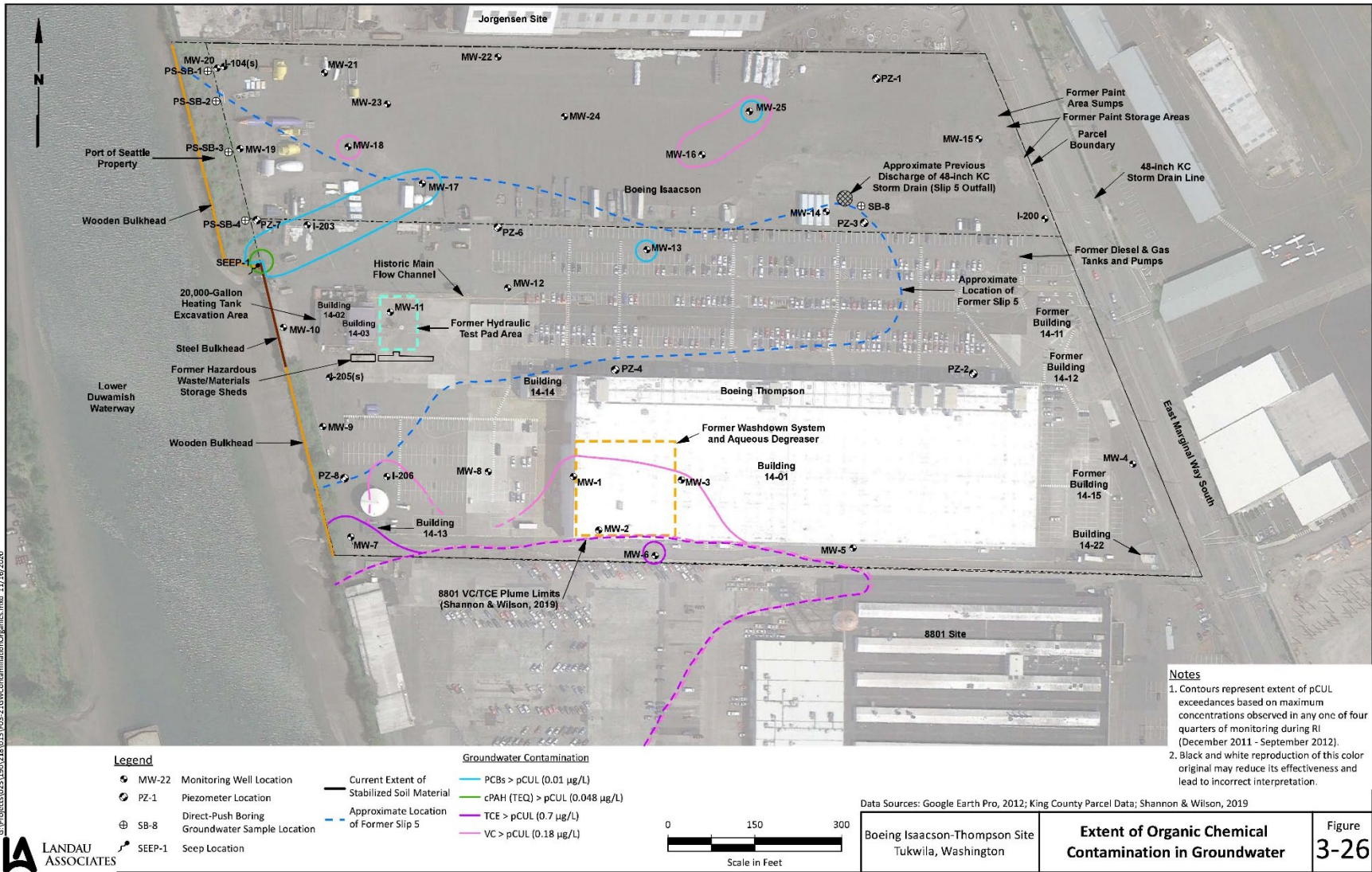


Figure BS-2: Extent of Organic Chemical Contamination in Groundwater at Boeing Isaacson Thompson Upland Cleanup Site, retrieved from the 2022 Draft Feasibility Study

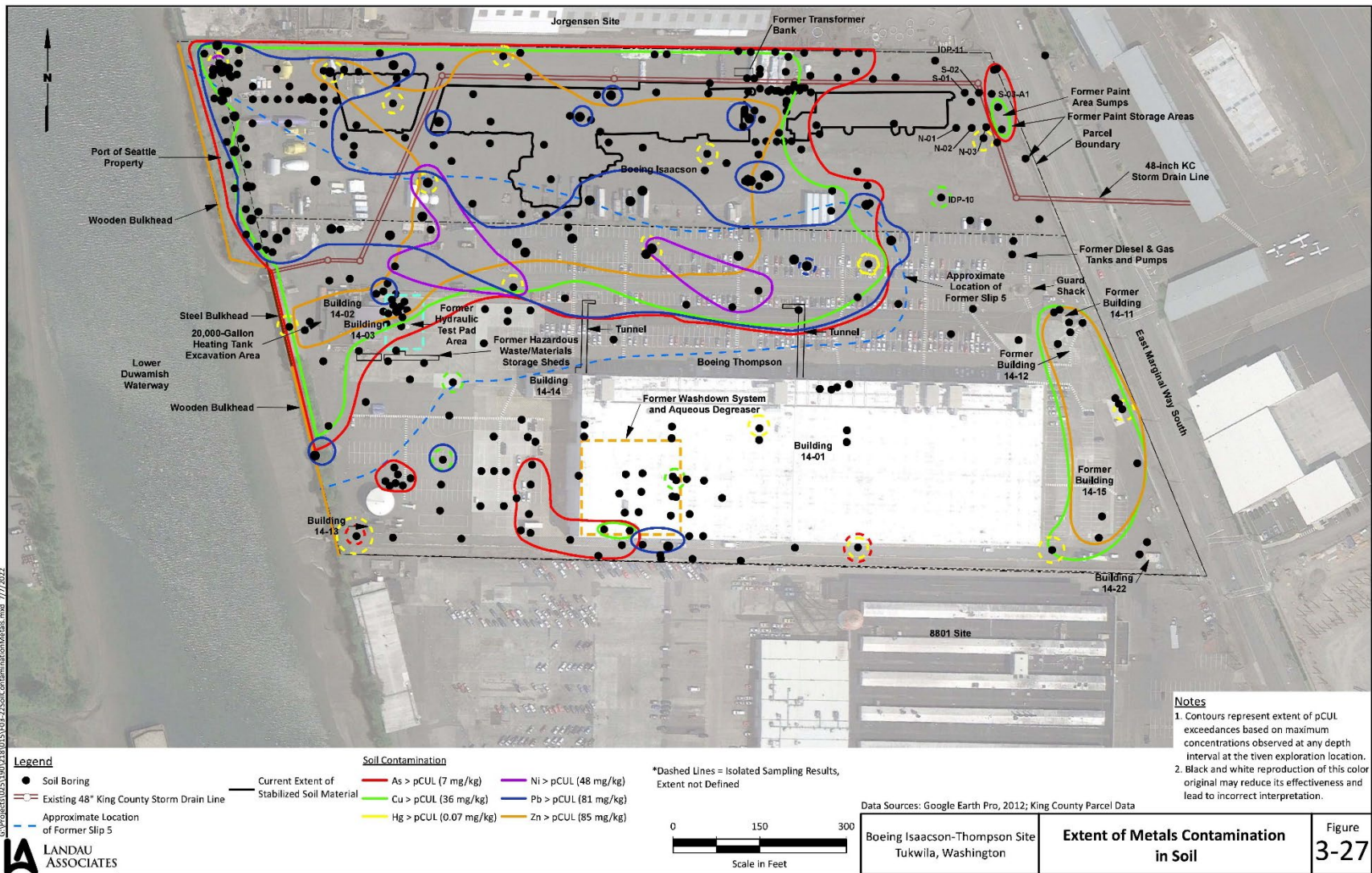


Figure BS-3: Extent of Metals Contamination in Soil at Boeing Isaacson Thompson Upland Cleanup Site, retrieved from the 2022 Draft Feasibility Study

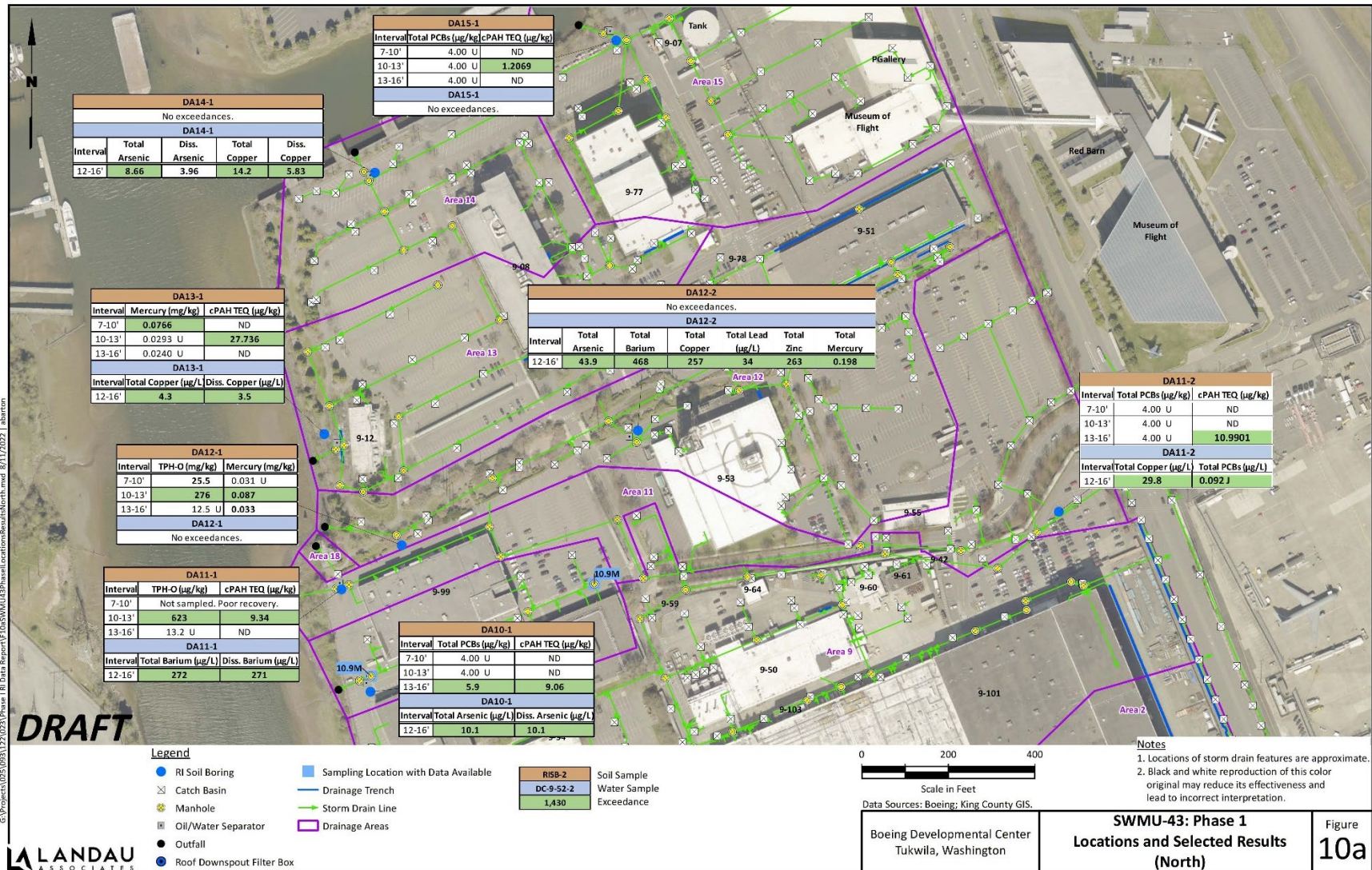


Figure BS-4: Soil and groundwater sampling results at the Boeing Developmental Center Upland Cleanup Site, retrieved from the 2022 Draft Remedial Investigation Phase I Data Summary Report

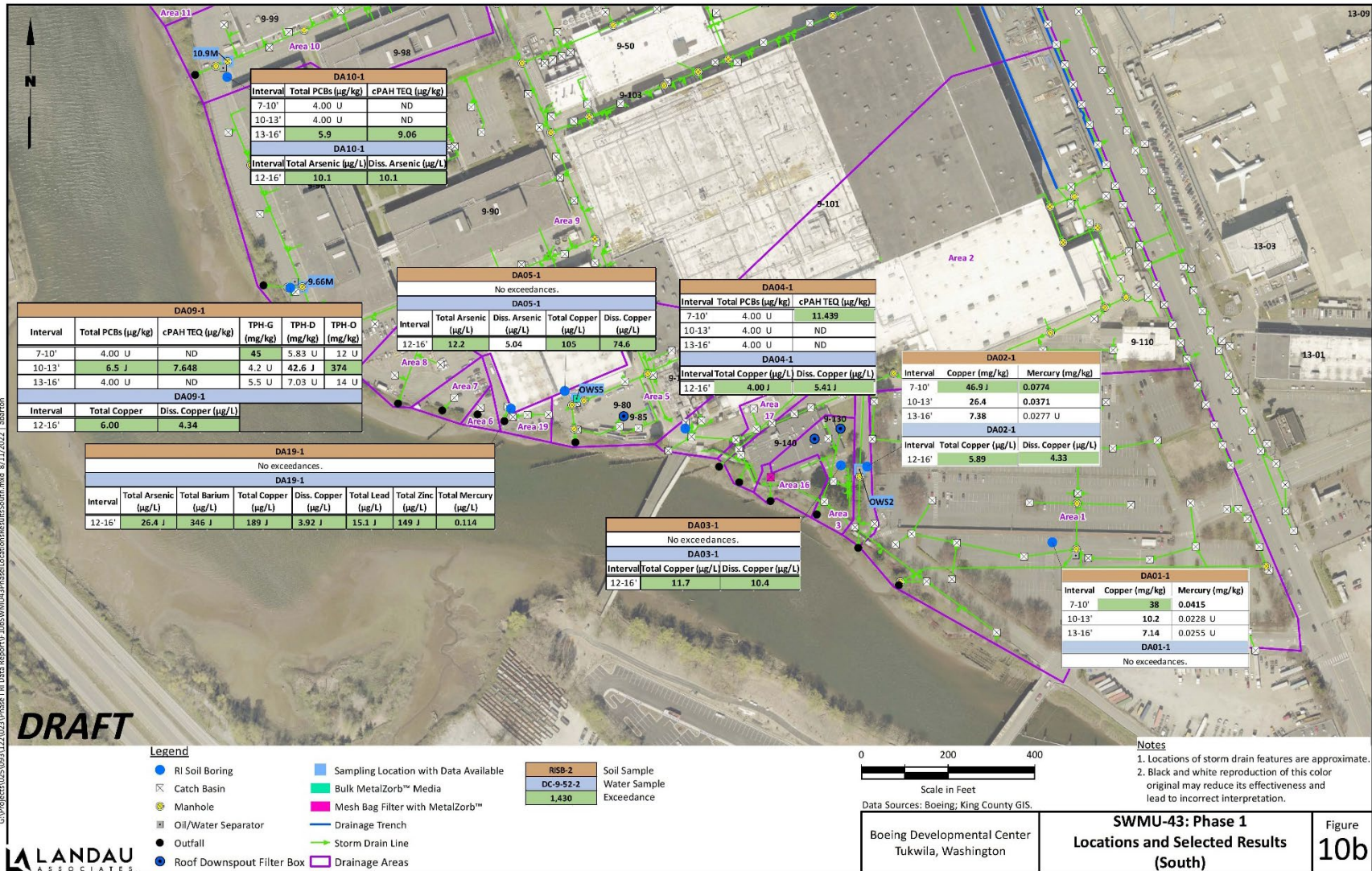


Figure BS-5: Soil and groundwater sampling results at the Boeing Developmental Center Upland Cleanup Site, retrieved from the 2022 Draft Remedial Investigation Phase I Data Summary Report