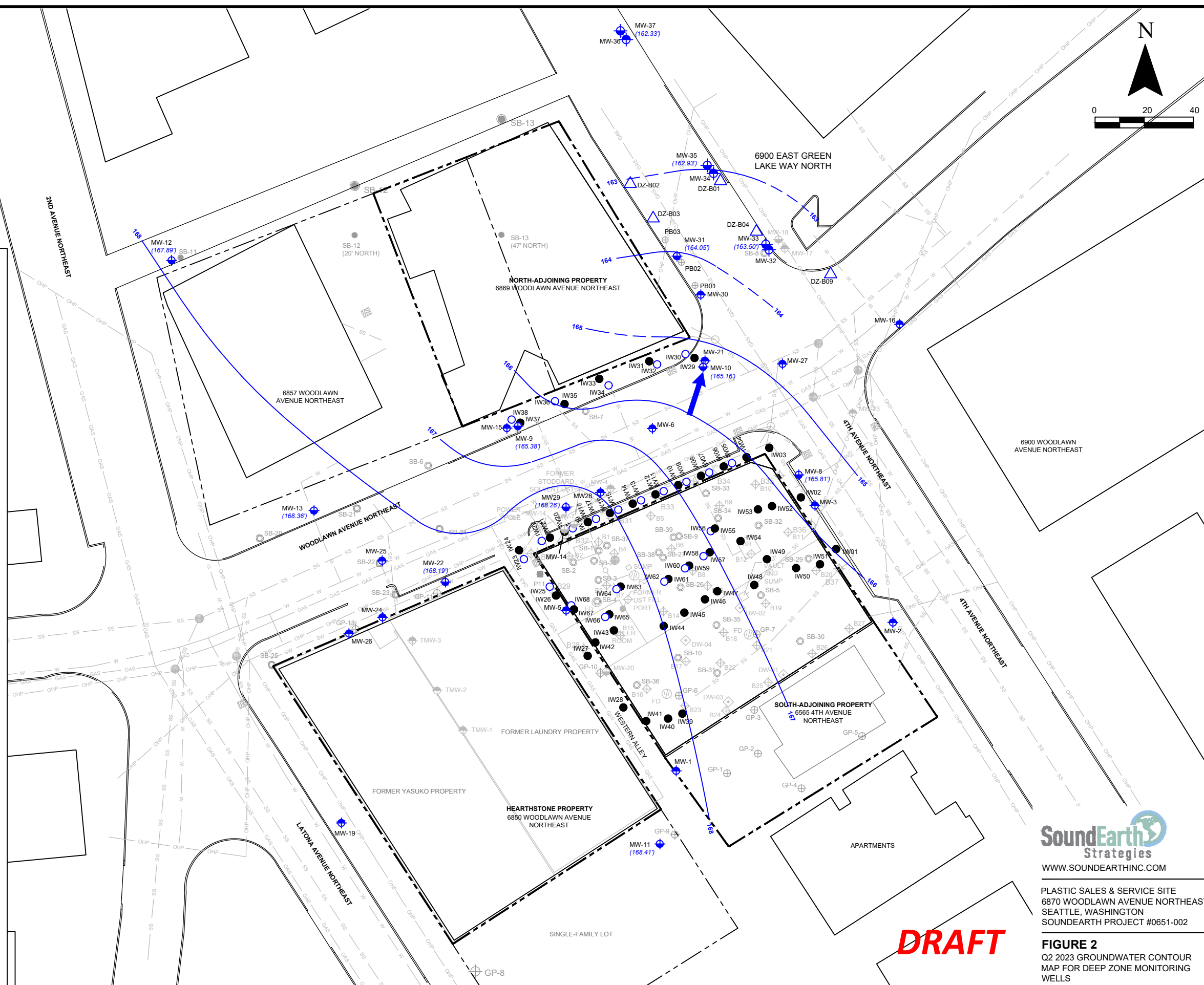


LEGEND

- CATCH BASIN
- MANHOLE
- SHALLOW-ZONE MONITORING WELL
- DEEP-ZONE MONITORING WELL
- DEEP DEWATERING WELL
- DEEP WATER-BEARING ZONE BORINGS (2022)
- SHALLOW INJECTION WELL
- DEEP INJECTION WELL
- APPROXIMATE DIRECTION OF GROUNDWATER FLOW (DEEP ZONE)
- DEEP ZONE POTENTIOMETRIC SURFACE CONTOUR (APRIL 17, 2023)
- GROUNDWATER ELEVATION
- DECOMMISSIONED WELL
- DIRECT-PUSH BORING (GEOENGINEERS 2002/2003)
- DIRECT-PUSH BORING (GEOENGINEERS 2004)
- DIRECT-PUSH BORING (FARALLON 2004)
- DIRECT-PUSH BORING (FARALLON 2006/2007)
- DIRECT-PUSH BORING (FARALLON 2010)
- DIRECT-PUSH BORING (SOUNDEARTH 2008)
- HOLLOW-STEM AUGER (SOUNDEARTH 2009)
- POST-ELECTRICAL RESISTANCE HEATING BORING LOCATION
- STORMWATER LINE
- GAS LINE
- SANITARY SEWER LINE
- WATER LINE
- OVERHEAD POWER LINE
- PROPERTY BOUNDARY LINE
- PARCEL BOUNDARY
- FLOOR DRAIN
- UNDERGROUND STORAGE TANK

- NOTES:**
1. FIGURE DERIVED FROM BASEMAP BY FARALLON CONSULTING, 2010.



PLASTIC SALES & SERVICE SITE
6870 WOODLAWN AVENUE NORTHEAST
SEATTLE, WASHINGTON
SOUNDEARTH PROJECT #0651-002

FIGURE 2
Q2 2023 GROUNDWATER CONTOUR
MAP FOR DEEP ZONE MONITORING
WELLS

DRAFT