



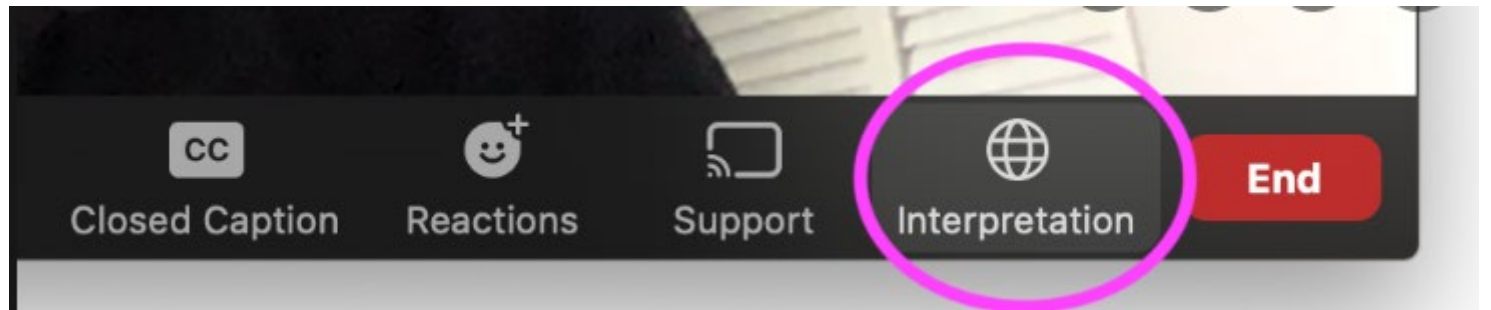
Snopac Property Cleanup Site

Remedial Investigation and Feasibility Study

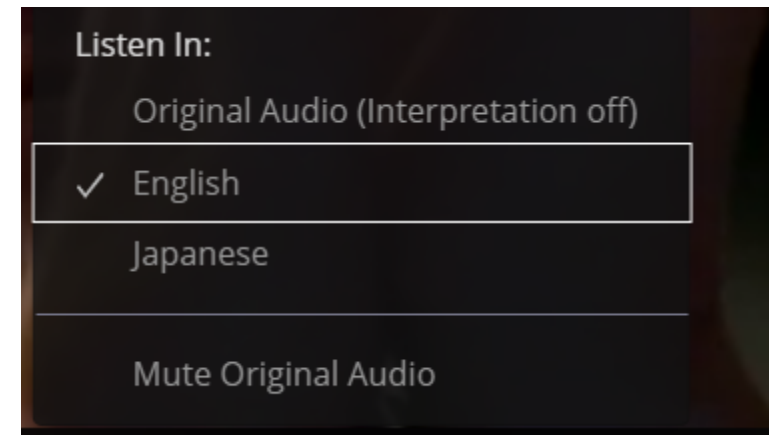
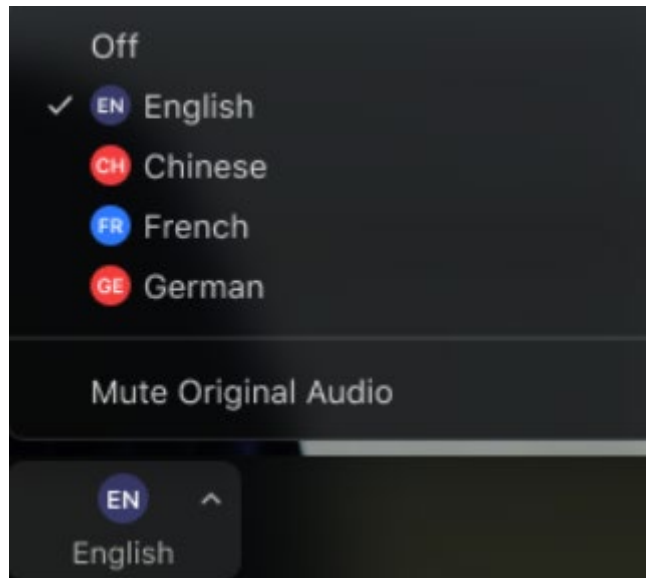
Public Meeting: September 7, 2023

Joining a language line.

1. Click Interpretation



2. Select the language you prefer.





Welcome to our combined in-person and online meeting

We will start our presentation shortly.

No sound? We will unmute soon for sound checks.

Join

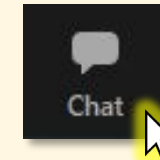
Connect Audio & Join



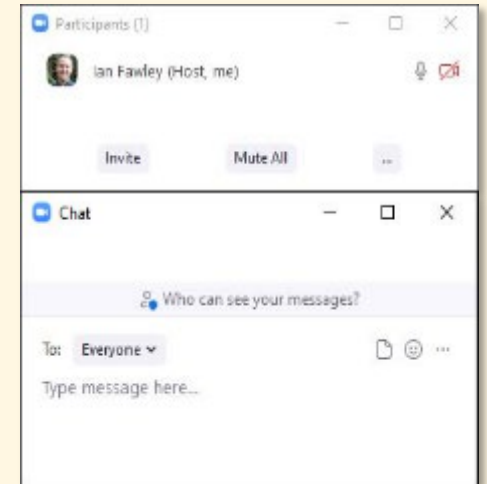
Tip Try your computer audio *first*.

If you'd like, you can test your speaker and microphone *before* joining.

Participate



Question?
Need help?
Chat with us!



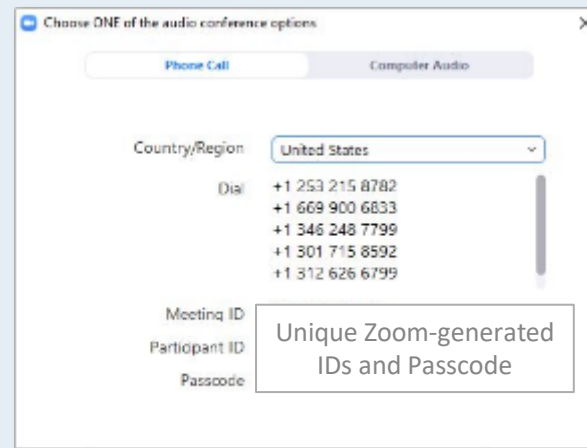
Turn on the Chat box and Participant list from your toolbar.

Audio

A

B

- Dial: **253-215-8782 (Tacoma)**
- Enter Zoom Meeting ID **853 9887 7615** followed by “#”
- Enter your unique Zoom Participant ID, followed by “#”
- (If you do not enter the Participant ID, you will be prompted to enter the Passcode.)



Joining a language line.

Español: Interpretación disponible con un teléfono inteligente y auriculares

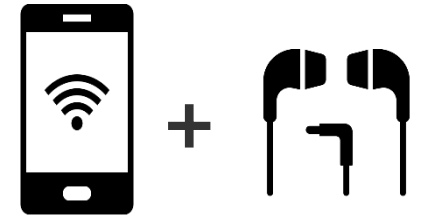
中文: 可通过智能手机和耳机获取翻译

Tiếng Việt: Thông dịch viên có sẵn với điện thoại thông minh và tai nghe

ភាសាខ្មែរ: ការបកប្រែភាសាផ្ទាល់មាត់ដែលអាចមានតាមទូរស័ព្ទស្អាតឬនិងកាសស្តាប់

Af Soomaali: Turjubaada waxaa lagu heleyaa taleefanka qacanta iyo samecadaha

አማርኛ: ትርጉሜ በስልጣናት ስልክ እና በጅሮ ማዳመጫዎች ይገኛል



zoom



In-person and Online Meeting Participation

During the Presentation

Please save questions for Q/A
at the end of presentation.

(This will help our interpreters
joining online.)

During Q&A

Facilitators will address questions:

- **1st:** With in-room attendees
(English)
- **2nd :** Chat questions
- **3rd:** With interpreters online
(Other Languages)

Verbal questions are NOT *formal* comments and will NOT receive *formal* responses.
See eComments link at end of presentation to submit *formal* comments. →

Presentation Outline



- Welcome and Introductions
- Cleanup Process and Public Participation
- Site Background and Document Overview
- Next Steps
- Questions/Answers



Meet Your Presenters



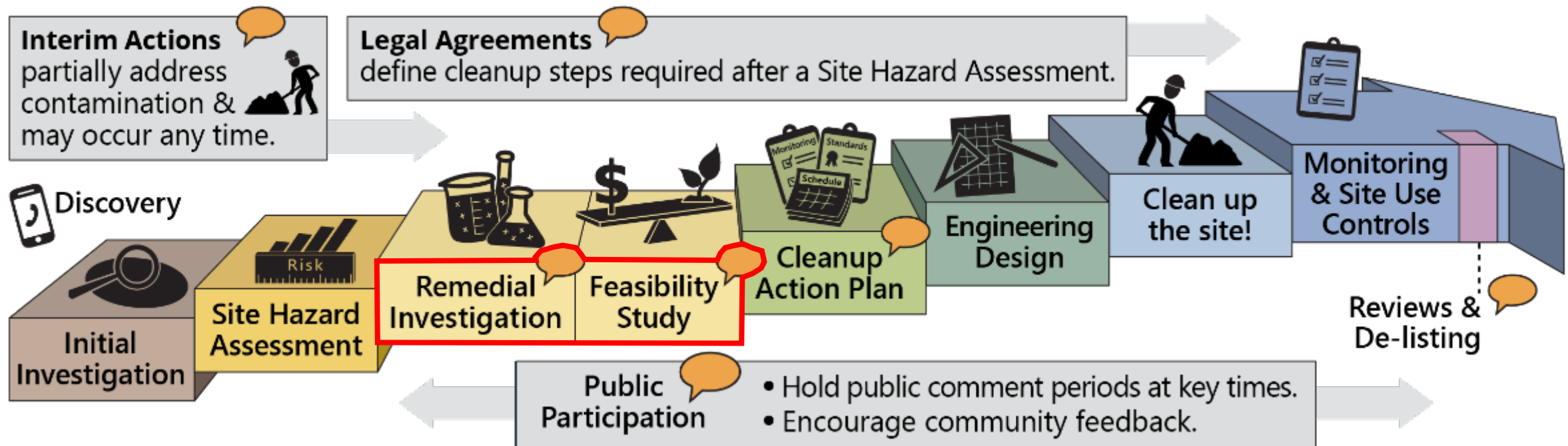
Sandra Matthews
Site Manager

Augie Nuszer
Outreach Specialist

Adam Griffin
Associate Engineer

The Model Toxics Control Act (MTCA)

Washington's Formal Cleanup Process and where we are now...



Public Participation



Ecology has two documents ready for public review and comment:


Remediation Investigation (RI) Report


- Learning what contamination is present.
- Finding where it is located.

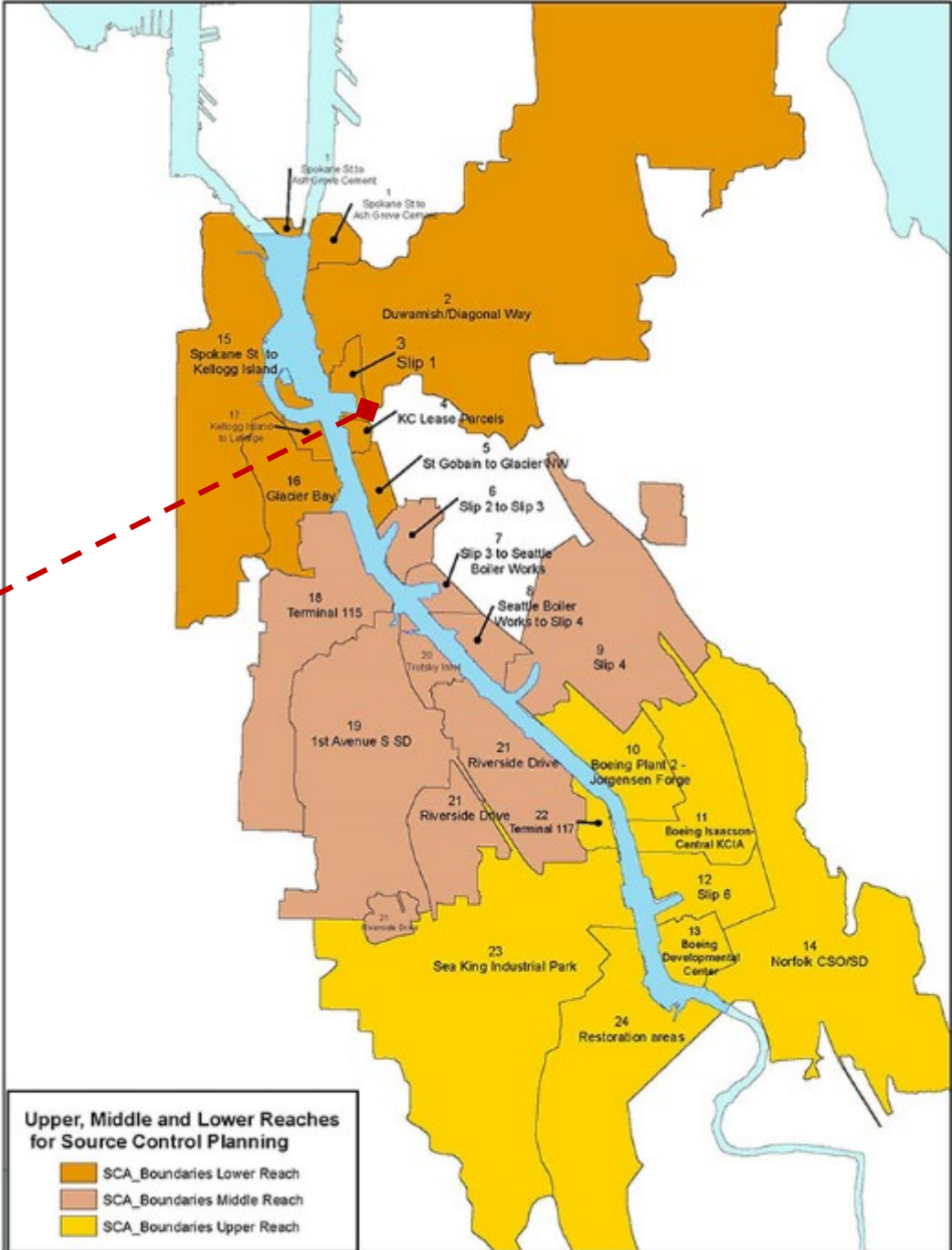
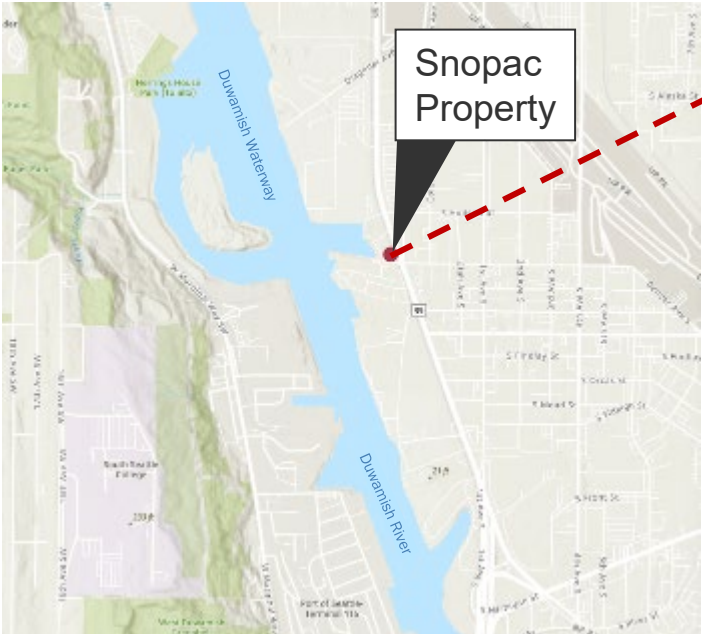
Feasibility Study (FS):

- Evaluating methods for cleaning up the contamination.
- Identifies a preferred method for cleanup.

Lower Duwamish Waterway (LDW)

 • Lead agency for sediment cleanup

 • Lead agency for source control





Site Location

The property is located adjacent to the LDW Superfund Site.

Site Address:
5055 East Marginal Way S.
in Seattle, Washington.

Site History

1919

1935

1940

1973

1932

1940

1970

1988

Shipping
operations

Spent sandblast grit
and Marine Power &
Equipment

Warehouse construction
& cardboard
manufacturing

Pioneer Towing
Company & USTs

Site History

1992

2012

2019

Today

2008

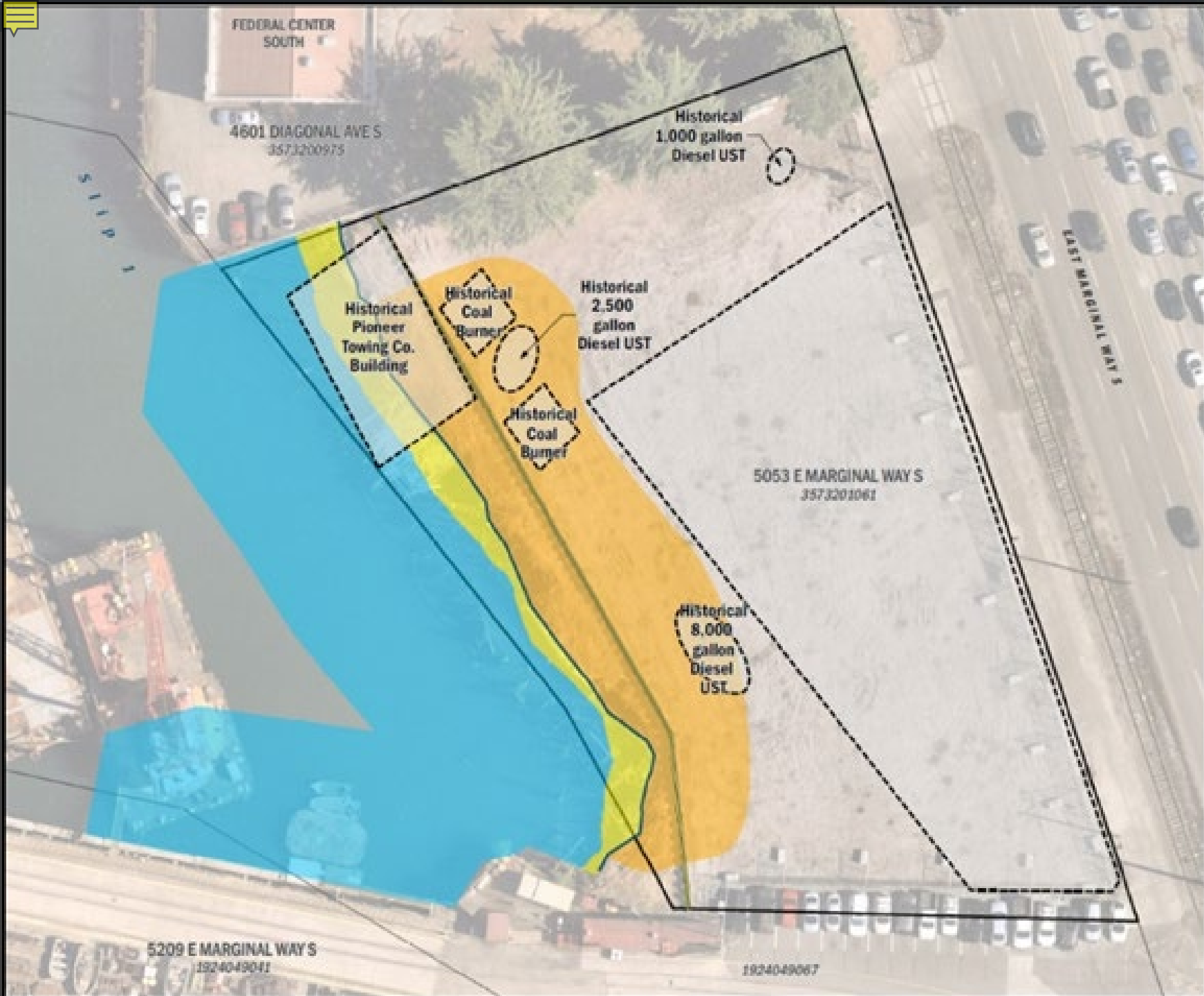
2020









5055 Properties LLC
purchased the property

Environmental
cleanup

Snopac Products Inc.
and fish packing

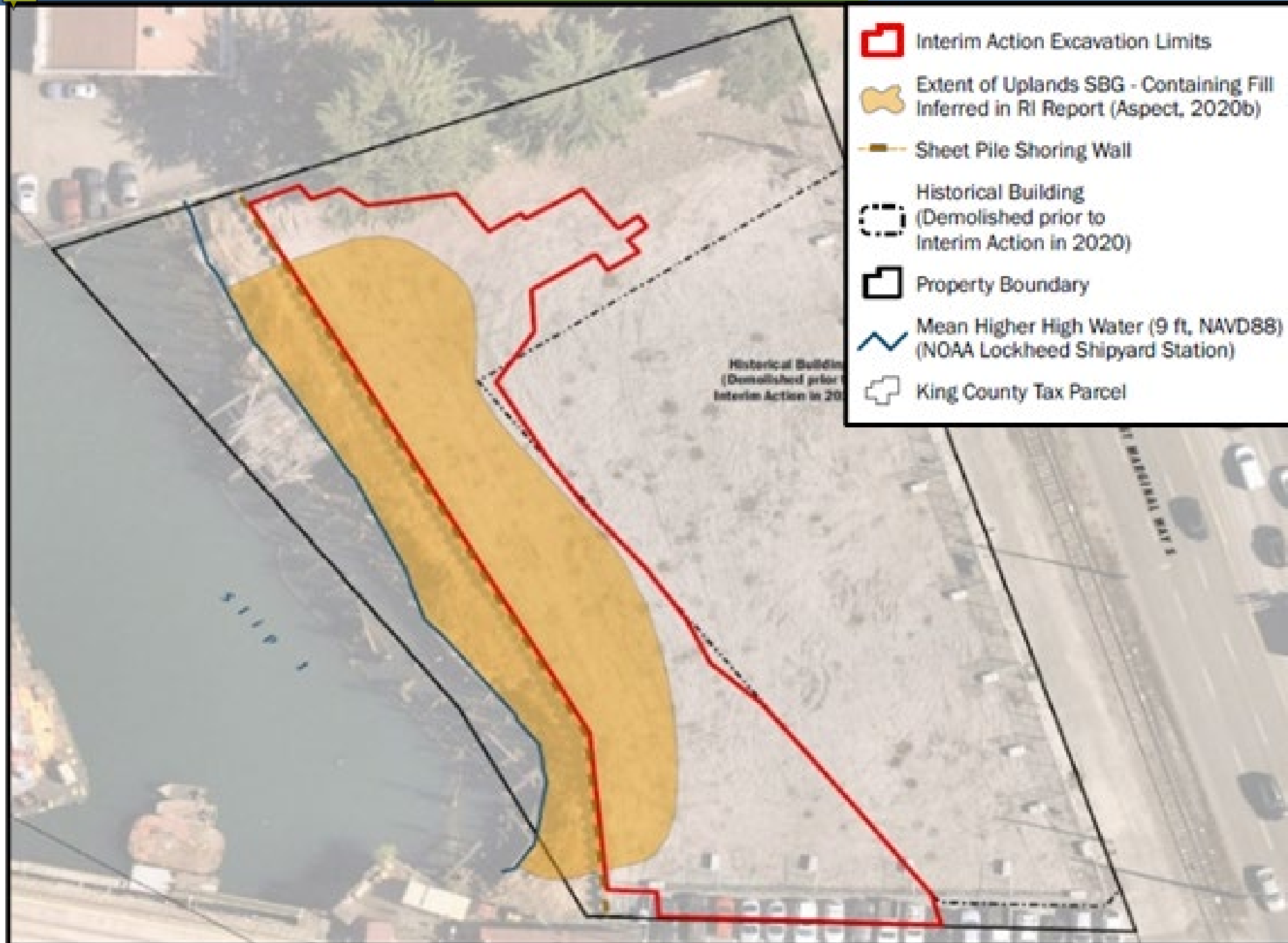
Warehouse removal and
Agreed Order



-  In-Water Area
-  Shoreface Area
-  Proposed Shoring Alignment
-  Inferred Extent of Uplands Sandblast Grit-Containing Fill
-  Historical Feature *Approximate Location*
-  Property Boundary
-  Mean Higher High Water (9 ft, NAVD88) (NOAA Lockheed Shipyard Station)
-  King County Tax Parcel

- Contaminants of concern:**
- Metals
 - PCBs
 - PAHs
 - PCP
 - Tributyltin Ion (TBT)
 - Total petroleum hydrocarbons (TPH)

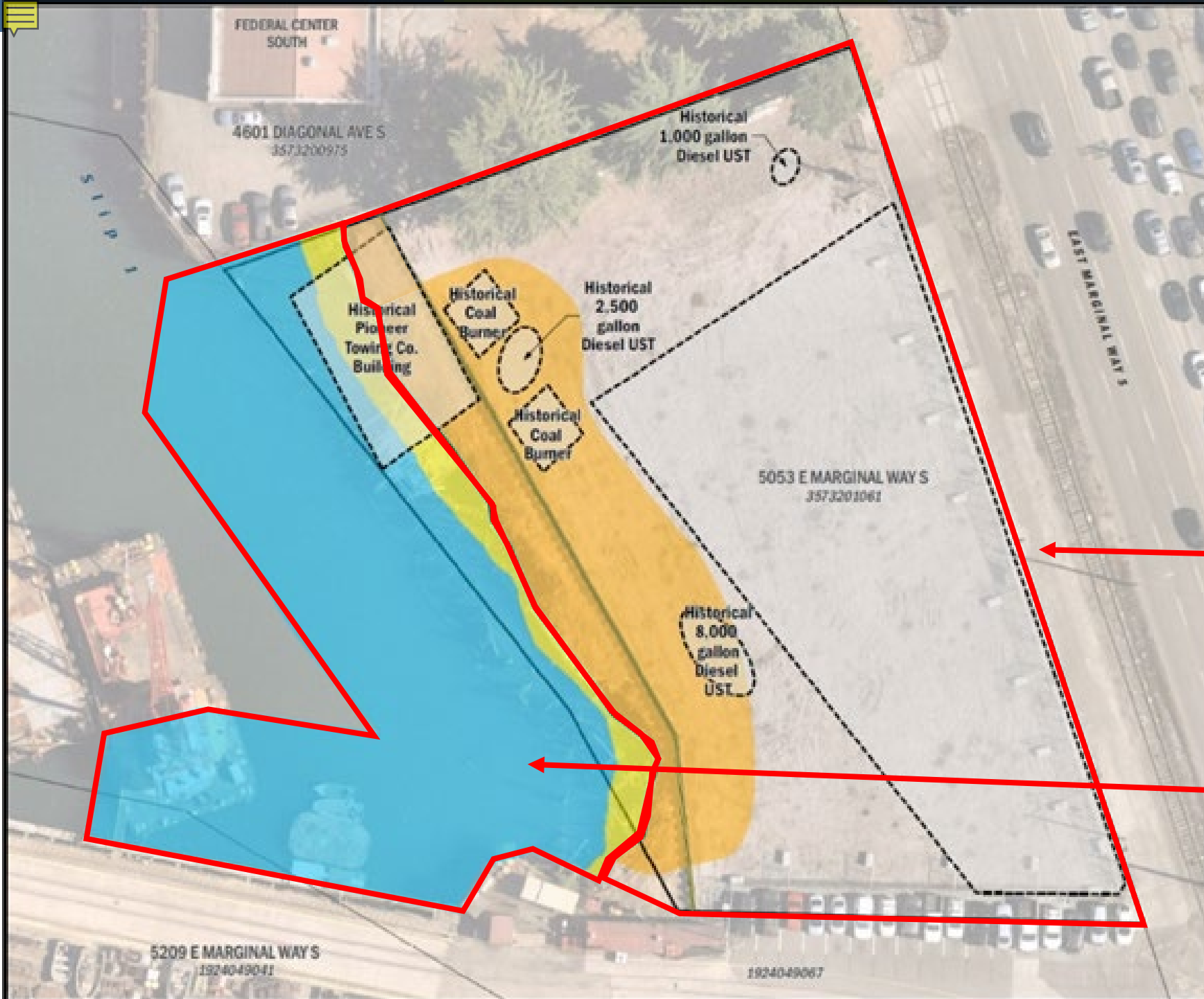
2020-2021 Interim Action



Two feasibility studies were developed.

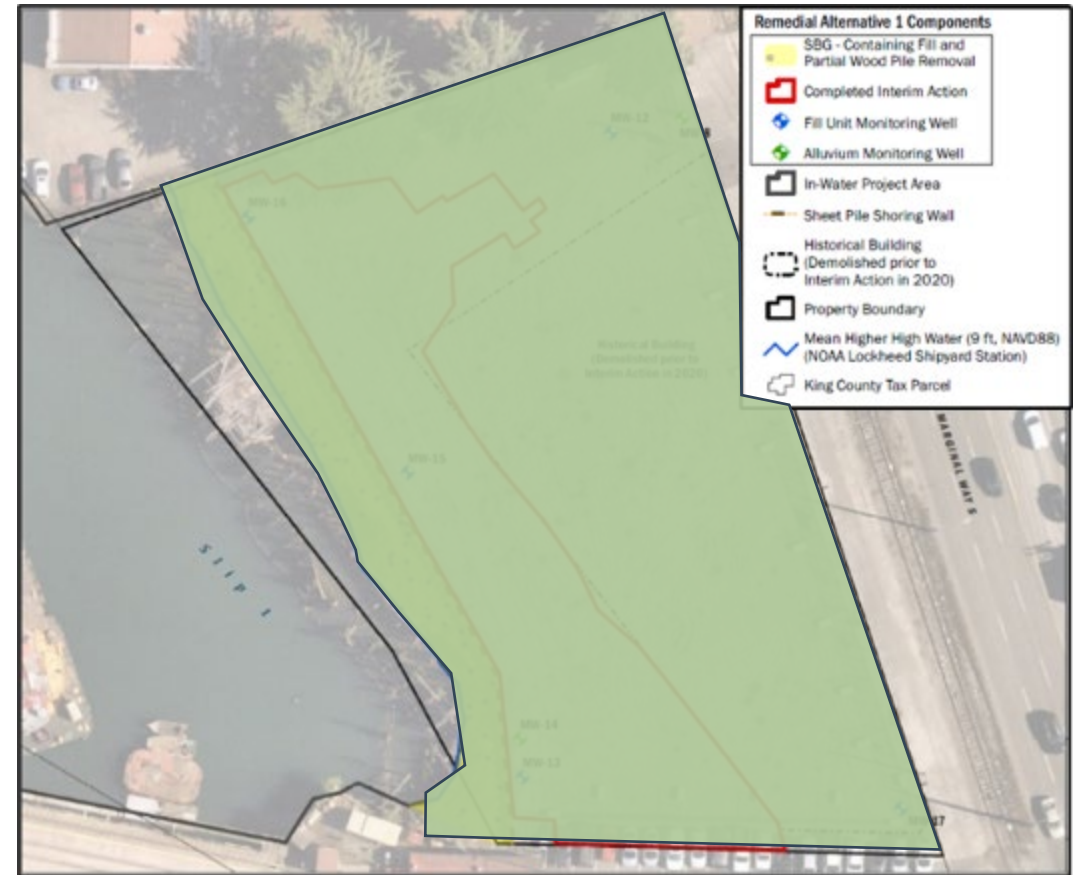
Upland (land area)
Feasibility Study

In-water (underwater
area) Feasibility Study



Potential Cleanup Methods

- Removal
- In-situ Treatment
- Monitored Natural Attenuation (MNA)
- Institutional Controls (ICs)



Preferred Alternative 1 for Uplands Area

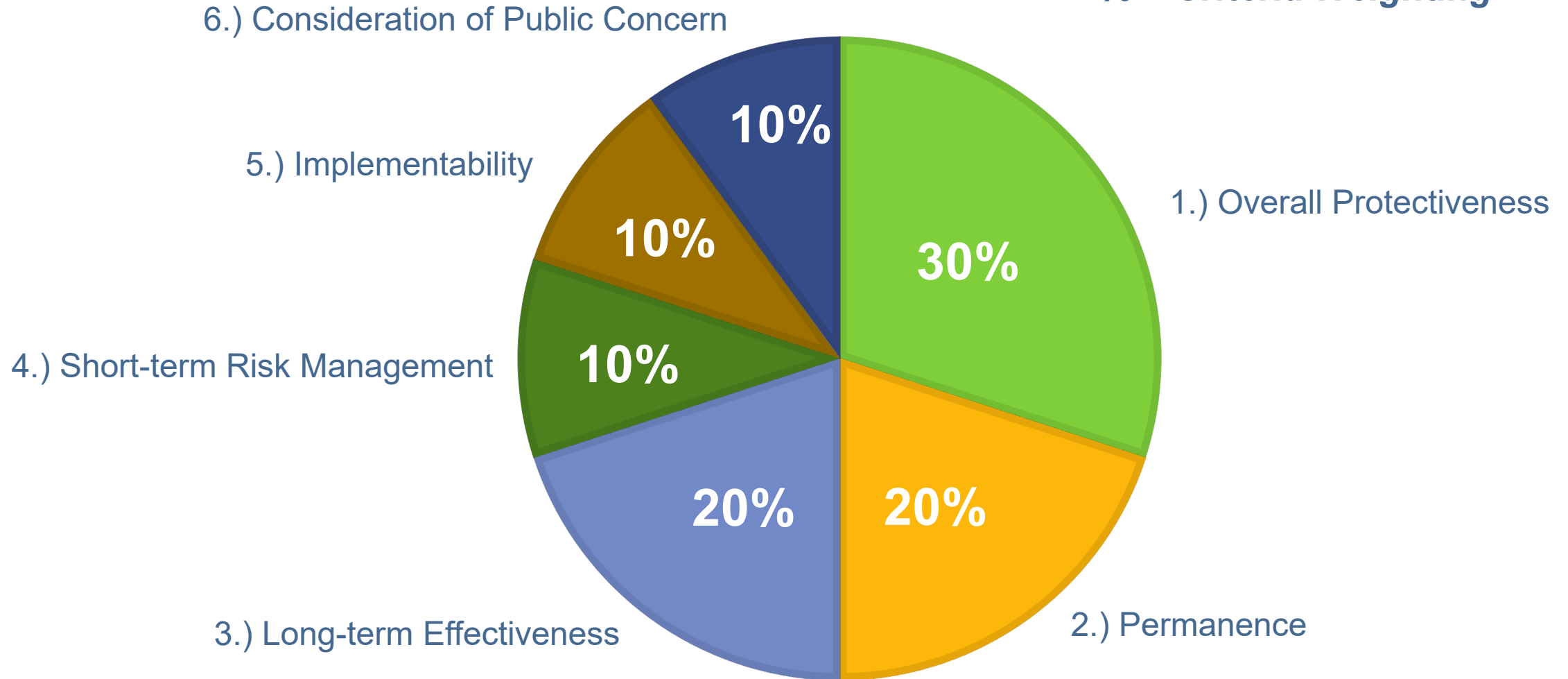
Three Upland Cleanup Options (Alternatives)

	Alternative 1	Alternative 2	Alternative 3
Spent Sand Blast Grit	Full removal	Full removal	Full removal
Wood Pilings	Partial removal	Complete removal	Complete removal
Groundwater	MNA	MNA	Treatment and MNA

Note: All Cleanup Alternatives included Institutional Controls.

Criteria weighting in Disproportionate Cost Analysis (DCA)

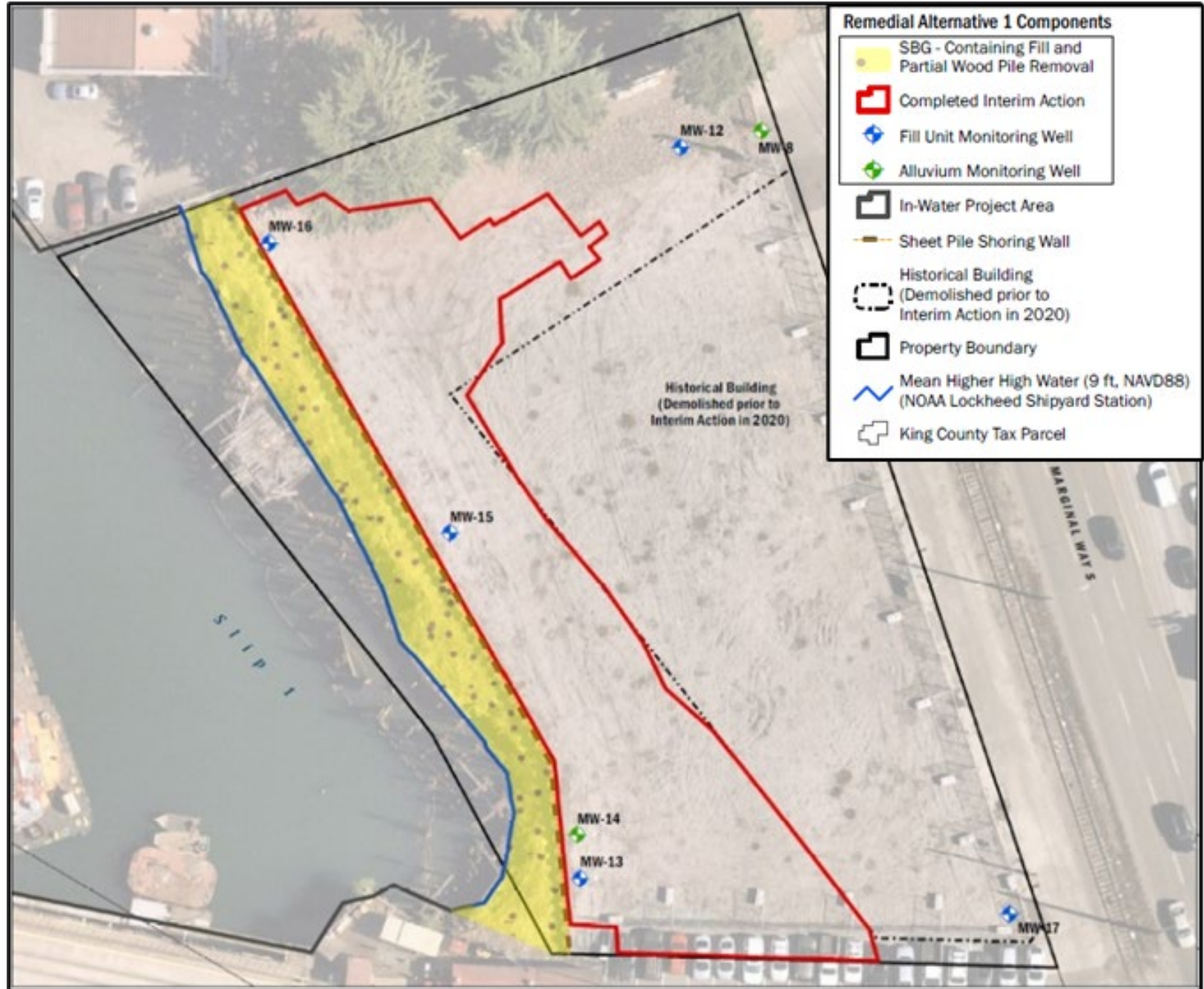
% = Criteria Weighting



Alternative 1

- SBG-Containing Fill Removal
- Partial Wood Piling Removal
- Groundwater Monitored Natural Attenuation
- Institutional Controls

Preferred Alternative 1 for Uplands Area



Planned Next Steps



Late 2023

- Ecology addresses comments and finalizes documents

2024

- Begin Cleanup Action Plan

Beyond 2024...

- Complete Cleanup Action Plan



How to Comment

August 28 to
October 26,
2023



Comment Online

www.bit.ly/Ecology-Snopac-Comments



Contact Site Manager

Sandra Matthews - Site Manager

PO Box 330316

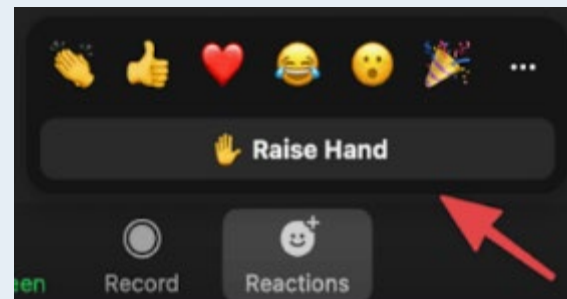
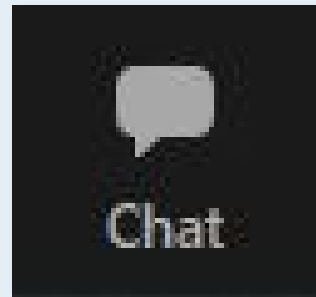
Shoreline, WA 98133-9716

Sandra.Matthews@ecy.wa.gov

Questions and Answers

Facilitators will address questions:

- **1st:** With in-room attendees (English)
- **2nd :** Chat questions
- **3rd:** With interpreters online (Other Languages)



Chat questions and verbal questions are NOT *formal* comments and will NOT receive *formal* responses. See eComments link in the chat to submit *formal* comments. →



Thank you

Sandra Matthews

(425) 223-1999

Sandra.Matthews@ecy.wa.gov

Augie Nuszer

(425) 533-5537

LDW@ecy.wa.gov



Reminder:

A digital PDF of this presentation will be available on Ecology's webpage:

www.bit.ly/Ecology-Snopac