



**T H O M A S**  
architecture studios

525 COLUMBIA ST SW | OLYMPIA, WA 98501  
360.915.8775 | TASOLYMPIA.COM



**EAST BAY LOT A**  
**WESTMAN MILL**

510 STATE AVE OLYMPIA, WA. 98501

Project No: 1514  
**CD SET**  
01/04/2018

**RENDERING**

**R.04**

All material herein constitutes the original and unpublished work of the architect and may not be used, duplicated, or disclosed without the written consent of the architect. Copyright © 2017 by Thomas Architecture Studio. All rights reserved.

1 VIEW FROM NORTH WEST



**T H O M A S**  
architecture studios

525 COLUMBIA ST SW | OLYMPIA, WA 98501  
360.915.8775 | TASOLYMPIA.COM



1 VIEW FROM NORTH

EAST BAY LOT A  
**WESTMAN MILL**  
510 STATE AVE OLYMPIA, WA, 98501

Project No: 1514  
**CD SET**  
01/04/2018

**RENDERING**

**R.05**

All material herein constitutes the original and unpublished work of the architect and may not be used, duplicated, or disclosed without the written consent of the architect. Copyright © 2017 by Thomas Architecture Studio. All rights reserved.

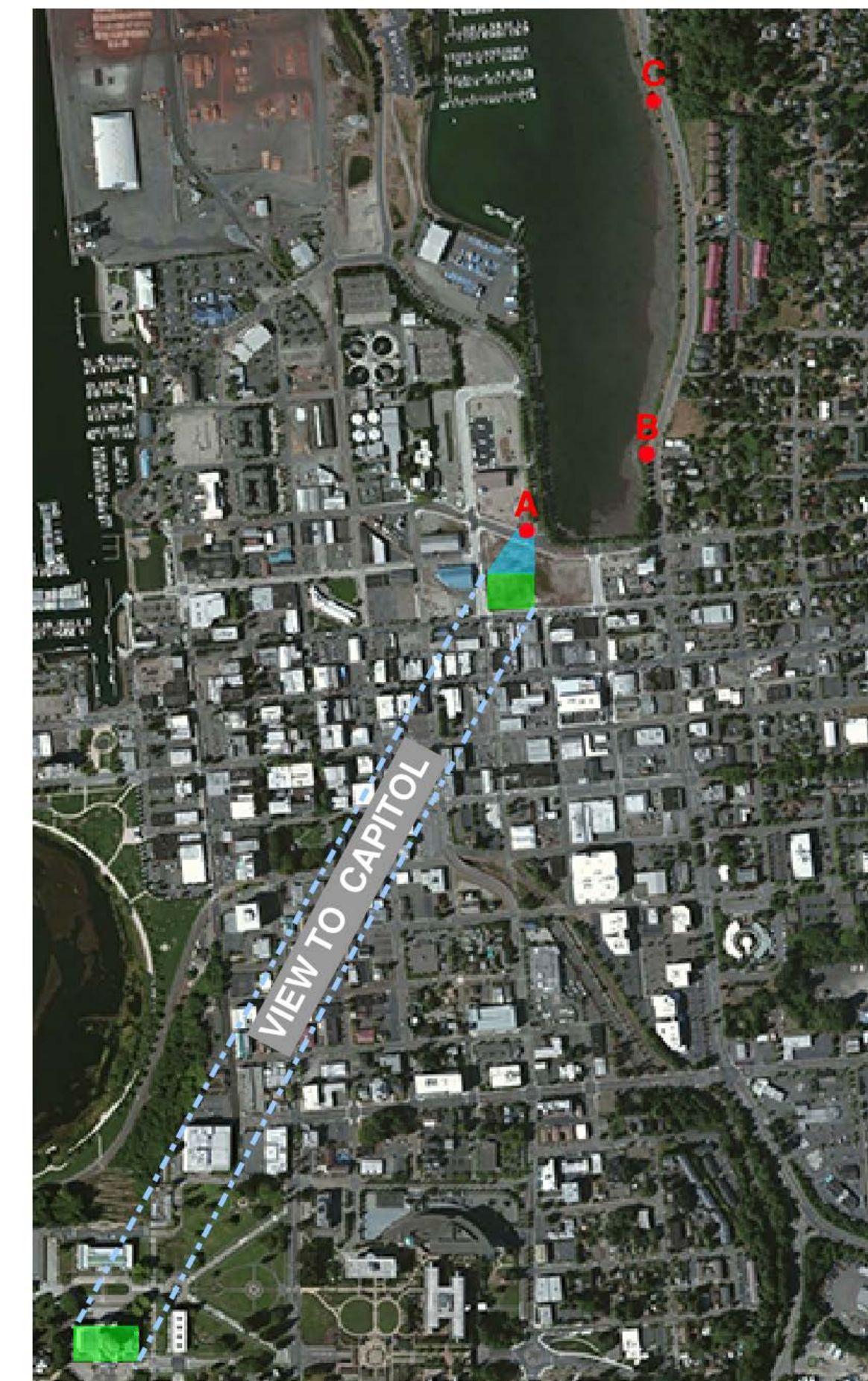


THOMAS  
architecture studios

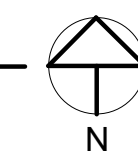
109 CAPITOL WAY N. | OLYMPIA, WA 98501  
360.915.8775 | tarstudio.com



2 VIEW CORRIDOR FROM VIEW POINT A



1 VIEW TO CAPITOL FROM VIEW POINT A



EAST BAY LOT A  
EAST BAY FLATS AND TOWNHOMES

510 STATE AVE OLYMPIA, WA. 98501

1514  
SCHEMATIC DESIGN  
6/27/2017 11:02:39 AM

VIEW CORRIDOR

V1.0

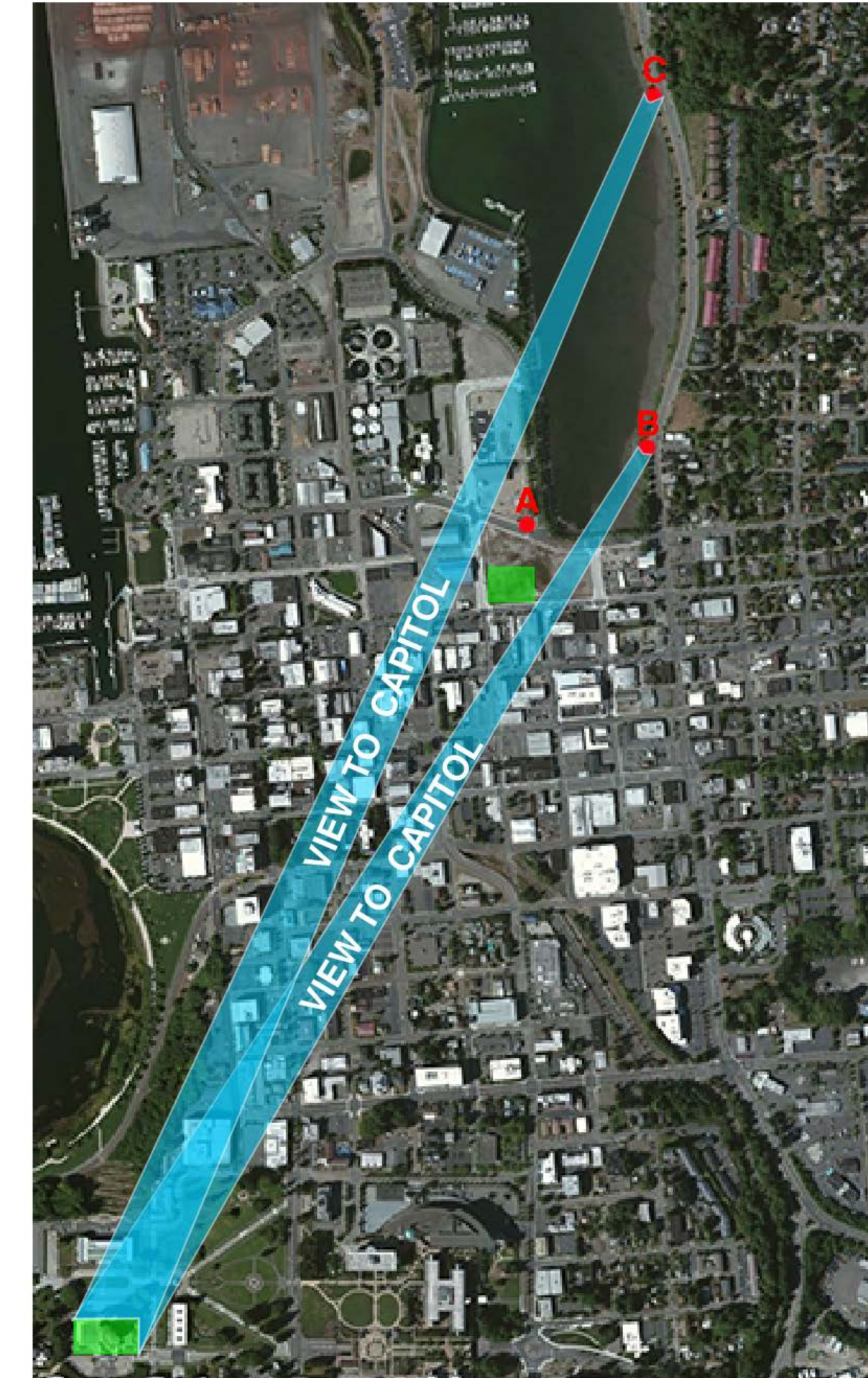
All material herein constitutes the original and unpublished work of the architect and may not be used, duplicated, or disclosed without the written consent of the architect. Copyright © 2017 by Thomas Architecture Studio. All rights reserved.



3 VIEW FROM VIEW POINT B



2 VIEW FROM VIEW POINT C



1 VIEW TO CAPITOL FROM VIEW POINT B & C



THOMAS  
architecture studios  
109 CAPITOL WAY N. | OLYMPIA, WA 98501  
360.915.8775 | tarstudio.com

EAST BAY LOT A  
EAST BAY FLATS AND TOWNHOMES  
510 STATE AVE OLYMPIA, WA. 98501

1514  
SCHEMATIC DESIGN  
6/27/2017 3:09:01 PM

VIEW CORRIDOR

V2.0

All material herein constitutes the original and unpublished work of the architect and may not be used, duplicated, or disclosed without the written consent of the architect. Copyright © 2017 by Thomas Architecture Studio. All rights reserved.

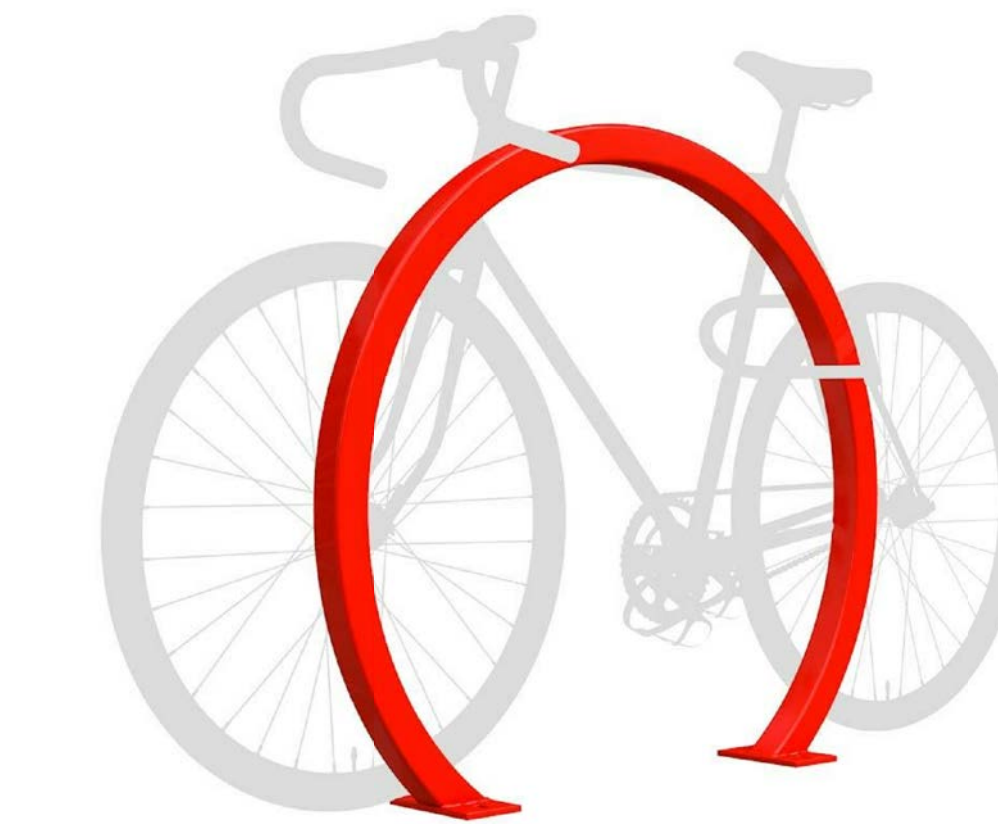


**T H O M A S**  
 architecture studios  
 525 COLUMBIA ST SW | OLYMPIA, WA 98501  
 360.915.8775 | TASOLYMPIA.COM



**BROOM FINISH CONCRETE**

SMOOTH HAND TROWEL FINISH AT EDGES  
 COLOR: NATURAL



**SHORT TERM BIKE STORAGE**

DERO ARC RACK  
 COLOR: BLACK



**LONG TERM BIKE STORAGE**

DERO BIKE FILE  
 COLOR: BLACK

① SITE AMENITIES  
 1/16" = 1'-0"

EAST BAY LOT A  
**WESTMAN MILL**  
 510 STATE AVE OLYMPIA, WA. 98501

Project No: 1514  
 CD SET  
 01/04/2018

**HARDSCAPE  
 MATERIALS AND  
 PEDESTRIAN  
 AMENITIES**

**A6.08**

All material herein constitutes the original and unpublished work of the architect and may not be used, duplicated, or disclosed without the written consent of the architect. Copyright © 2017 by Thomas Architecture Studio. All rights reserved.

**BIKE FILE**  
Submittal Sheet

**CAPACITY** 9 bikes per 8-foot unit

**MATERIALS** 12 gauge galvanized steel trolley track  
Stainless steel trolley assembly  
1" 16g arms

**MOUNT OPTIONS**

- Wall Mount**  
The Bike File is available in a wall-mounted configuration. Please contact us if you are interested in a floor-mounted Bike File.
- Ceiling Mount**  
The Bike File is available in a ceiling-mounted configuration.
- Floor Mount**  
The Bike File is also available in a floor-mounted option.

*(Optional wheel stop)*

*Bike Files may be spliced together for expanded, continuous bike storage.*

*(Optional wheel stop)*

*A double-sided option is available*

*Trolleys allow you to push neighboring bikes apart when hanging or removing a bike*



www.dero.com | 1-888-337-6729

© 2015 Dero

**ARC RACK**  
Submittal Sheet

**CAPACITY** 2 Bikes

**MATERIALS** 2" x 2" x 11g square tube

**FINISHES**

- Galvanized**  
An after fabrication hot dipped galvanized finish is our standard option.
- Powder Coat**  
Our powder coat finish assures a high level of adhesion and durability by following these steps:  
1. Sandblast  
2. Epoxy primer electrostatically applied  
3. Final thick TGIC polyester powder coat
- Thermoplastic**  
In addition to an increased thickness (8-10mils), the thermoplastic finish covers a galvanized layer and offers superior impact resistance over powder coating.
- Stainless**  
Stainless Steel: 304 grade stainless steel material finished in either a high polished shine or a satin finish.

**MOUNT OPTIONS**

- In-ground**  
In ground mount is embedded into concrete base. Specify in ground mount for this option.
- Surface**  
Foot Mount has two 2.5"x6"x.25" feet with two anchors per foot. Specify foot mount for this option.

**SETBACKS**

In-ground      Surface



**SHORT TERM BIKE PARKING**

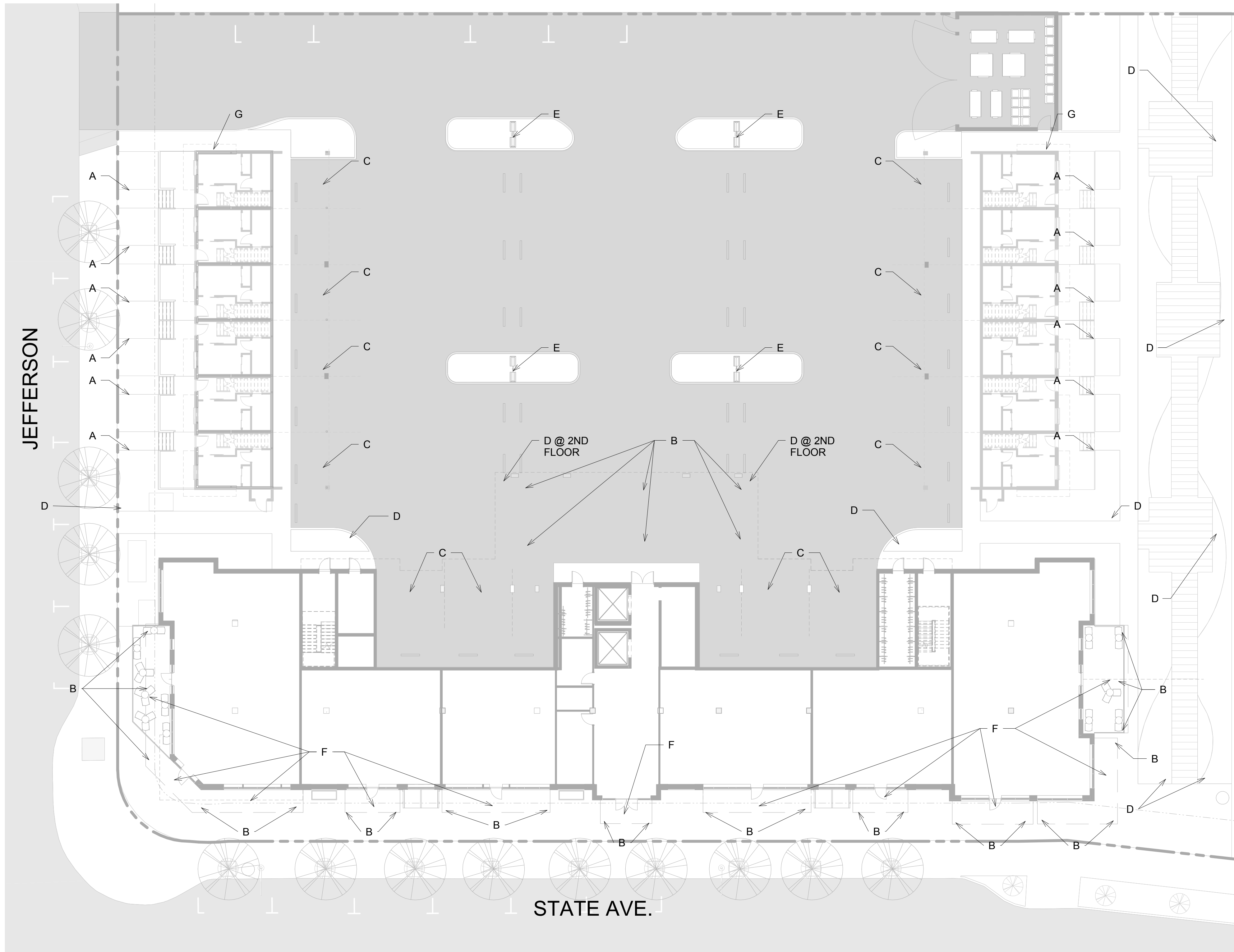
**LONG TERM BIKE PARKING**



**T H O M A S**  
 architecture studios  
 525 COLUMBIA ST SW | OLYMPIA, WA 98501  
 360.915.8775 | TASOLYMPIA.COM

**LIGHTING SCHEDULE**

- A= LIGHTED BOLLARD
- B= CANOPY DOWNLIGHT
- C= LINEAR LED STRIP LIGHT – CEILING MOUNTED
- D= PEDESTRIAN POST LIGHT
- E= POLE LIGHT
- F= CANOPY SIGNAGE LIGHT (TOP MOUNT)
- G= WALL – PACK - SECURITY
- H= EXTERIOR WALL SCONCE



① SITE PLAN - LIGHT PLAN  
 1/16" = 1'-0"

**EAST BAY LOT A**  
**WESTMAN MILL**  
 510 STATE AVE OLYMPIA, WA. 98501

Project No: 1514  
 CD SET  
 01/08/2018

**SITE LIGHTING PLAN**

**A1.03**

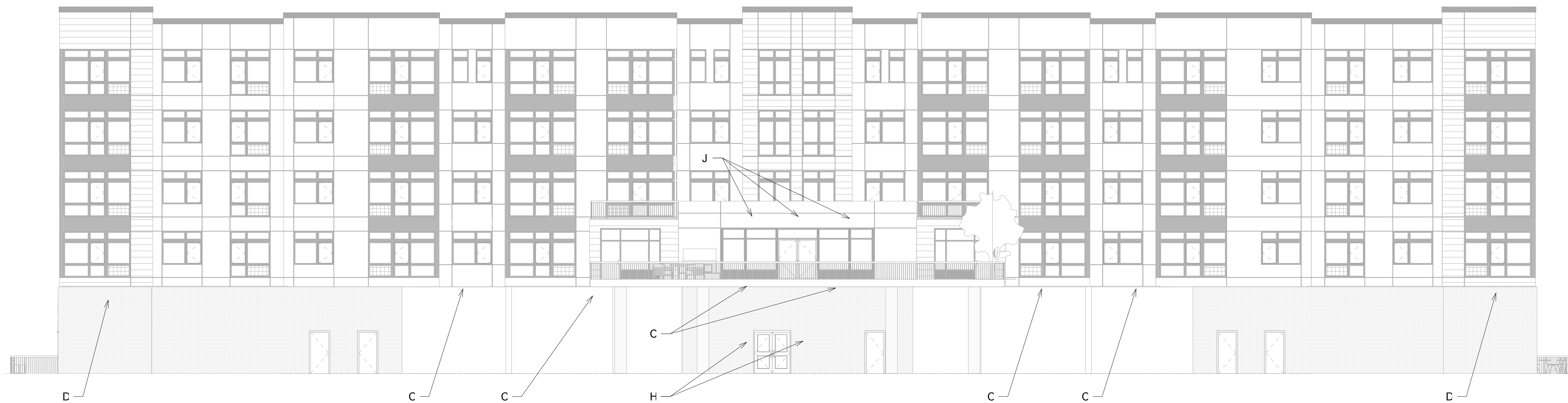
All material herein constitutes the original and unpublished work of the architect and may not be used, duplicated, or disclosed without the written consent of the architect. Copyright © 2017 by Thomas Architecture Studio. All rights reserved.

**LIGHTING SCHEDULE**

- A= LIGHTED BOLLARD
- B= CANOPY DOWNLIGHT
- C= LINEAR LED STRIP LIGHT – CEILING MOUNTED
- D= LINEAR STRIP LIGHT – WALL MOUNTED
- E= POLE LIGHT
- F= CANOPY SIGNAGE LIGHT (TOP MOUNT)
- G= WALL – PACK - SECURITY
- H= EXTERIOR WALL SCONCE



**1 LIGHTING ELEVATION - EAST**  
3/32" = 1'-0"



**2 LIGHTING ELEVATION - NORTH**  
3/32" = 1'-0"

EAST BAY LOT A  
**WESTMAN MILL**  
510 STATE AVE OLYMPIA, WA. 98501

Project No: 1514  
CD SET  
01/04/2018

**SITE LIGHTING  
ELEVATION**

**A1.04**

All material herein constitutes the original and unpublished work of the architect and may not be used, duplicated, or disclosed without the written consent of the architect. Copyright © 2017 by Thomas Architecture Studio. All rights reserved.





**T H O M A S**  
architecture studios

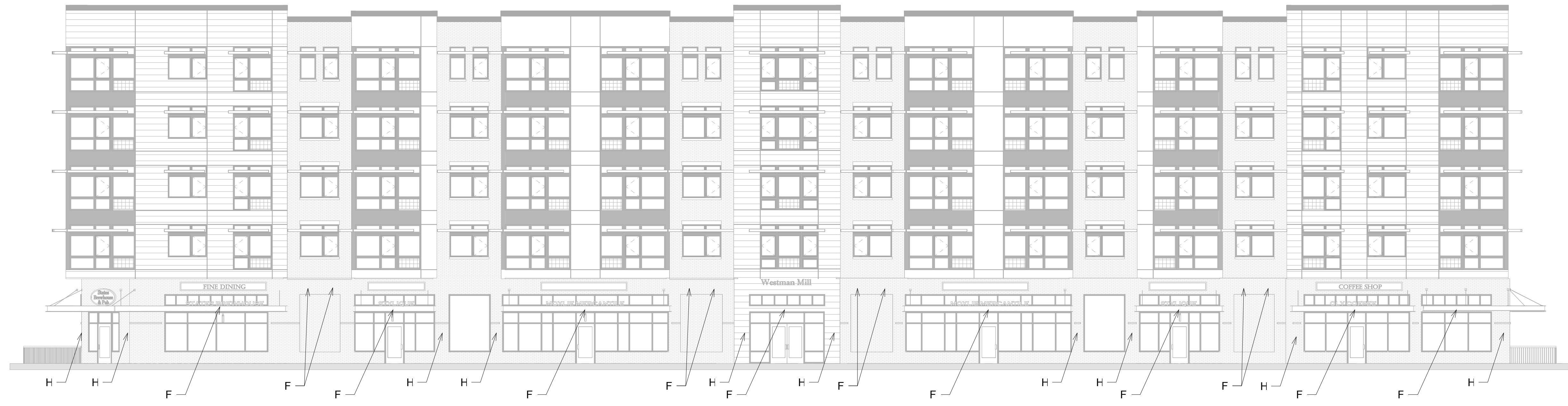
525 COLUMBIA ST SW | OLYMPIA, WA 98501  
360.915.8775 | TASOLYMPIA.COM



**LIGHTING SCHEDULE**

- A= LIGHTED BOLLARD
- B= CANOPY DOWNLIGHT
- C= LINEAR LED STRIP LIGHT – CEILING MOUNTED
- D= PEDESTRIAN POST LIGHT
- E= POLE LIGHT
- F= CANOPY SIGNAGE LIGHT (TOP MOUNT)
- G= WALL – PACK - SECURITY
- H= EXTERIOR WALL SCNCE

**1 LIGHTING ELEVATION - WEST**  
3/32" = 1'-0"



**2 LIGHTING ELEVATION - SOUTH**  
3/32" = 1'-0"

EAST BAY LOT A  
**WESTMAN MILL**  
510 STATE AVE OLYMPIA, WA, 98501

Project No: 1514  
CD SET  
01/04/2018

**SITE LIGHTING ELEVATION**

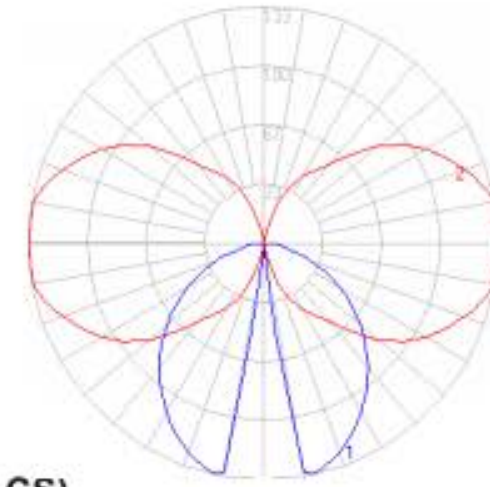
**A1.05**

All material herein constitutes the original and unpublished work of the architect and may not be used, duplicated, or disclosed without the written consent of the architect. Copyright © 2017 by Thomas Architecture Studio. All rights reserved.

# BEGA

Photometric Filename: 77266.ies

TEST: BE5924  
 TEST LAB: BEGA  
 DATE: 5/15/2013  
 LUMINAIRE: 77 266  
 LAMP: 4.2W LED



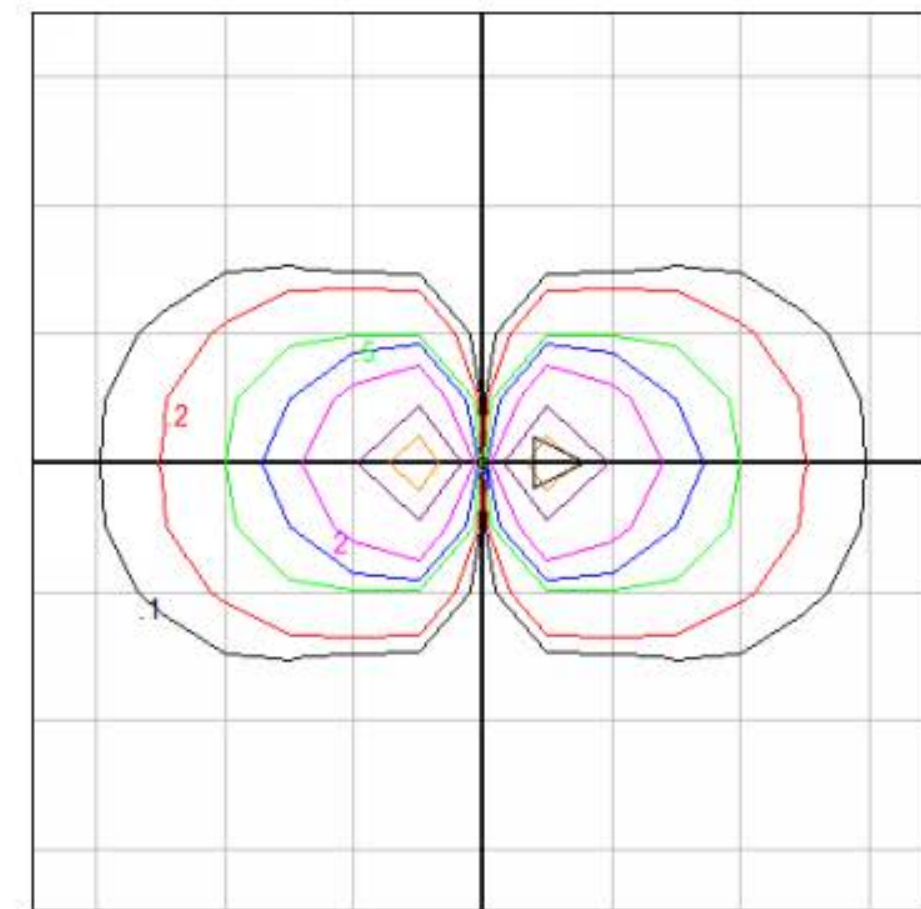
### Characteristics

|                                    |                       |
|------------------------------------|-----------------------|
| IES Classification                 | Type II               |
| Longitudinal Classification        | Very Short            |
| Lumens Per Lamp                    | N.A. (absolute)       |
| Total Lamp Lumens                  | N.A. (absolute)       |
| Luminaire Lumens                   | 156                   |
| Downward Total Efficiency          | N.A.                  |
| Total Luminaire Efficiency         | N.A.                  |
| Luminaire Efficacy Rating (LER)    | 26                    |
| Total Luminaire Watts              | 6                     |
| Ballast Factor                     | 1.00                  |
| Upward Waste Light Ratio           | 0.00                  |
| Max. Cd.                           | 133.2 (357.5H, 12.5V) |
| Max. Cd. (<90 Vert.)               | 133.2 (357.5H, 12.5V) |
| Max. Cd. (At 90 Deg. Vert.)        | .1 (0.1%Lum)          |
| Max. Cd. (80 to <90 Deg. Vert.)    | 9 (5.8%Lum)           |
| Cutoff Classification (deprecated) | N.A. (absolute)       |

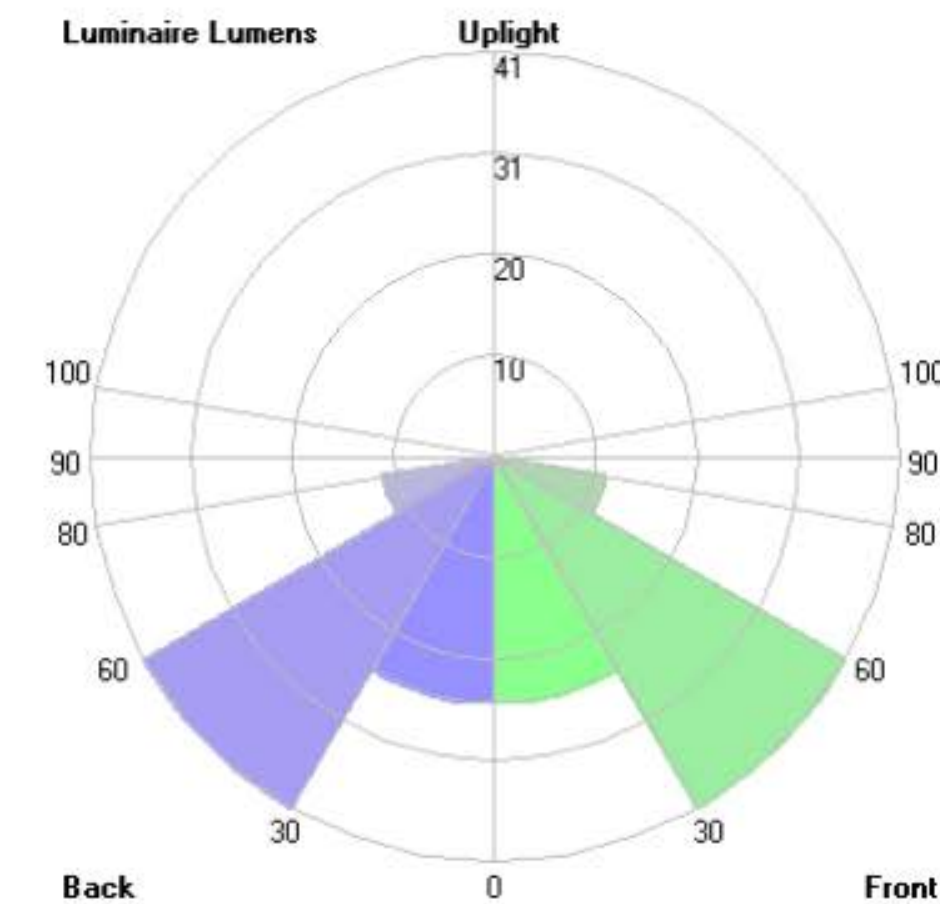
### Lum. Classification System (LCS)

| LCS Zone     | Lumens | %Lamp | %Lum  |
|--------------|--------|-------|-------|
| FL (0-30)    | 24.8   | N.A.  | 16.0  |
| FM (30-60)   | 40.9   | N.A.  | 26.3  |
| FH (60-80)   | 11.4   | N.A.  | 7.3   |
| FVH(80-90)   | 0.7    | N.A.  | 0.5   |
| BL (0-30)    | 24.8   | N.A.  | 16.0  |
| BM (30-60)   | 40.9   | N.A.  | 26.3  |
| BH (60-80)   | 11.4   | N.A.  | 7.3   |
| BVH(80-90)   | 0.7    | N.A.  | 0.5   |
| UL (90-100)  | < 0.05 | N.A.  | 0.0   |
| UH (100-180) | < 0.05 | N.A.  | 0.0   |
| Total        | 155.6  | N.A.  | 100.0 |

BUG Rating B0-U1-G0



Grid Spacing = 2.5 ft.



Visit our web site at <http://www.seagullighting.com/>  
 78660EN-185 - page 1 of 1



Life Illuminated | Since 1919

78660EN-185: One Light Outdoor Ceiling Flush Mount



Dimensions:

Diameter: 10" Wire: 6 1/2"  
 Height: 7" Mounting Proc.: Cap Nuts  
 Connection: Mounted To Box

Bulbs:

1 - LED Medium A19 10w Max. 120v - included

Features:

- ENERGY STAR® Qualified
- LED Bulbs are an efficient, versatile and durable light source that deliver exceptional performance.
- Meets Title 24 energy efficiency standards
- Title 24 compliant when used with included Joint Appendix (JA8) approved lamp.

Material List:

1 Body - Aluminum - Forged Iron

Safety Listing:

Safety Listed for Damp Locations

Instruction Sheets:

English (HC-1516)

Collection: Winnetka Outdoor

One Light LED Outdoor Flush Fixture in Forged Iron Finish with Satin Etched Glass Shade with Forged Iron Band

UPC #:785652035227

Finish: Forged Iron (185)

Shade / Glass / Diffuser Details:

| Part  | Material | Finish       | Quantity | Item Number | Length | Width | Height | Diameter | Fitter Diameter | Shade Top Length | Shade Top Width | Shade Top Diameter |
|-------|----------|--------------|----------|-------------|--------|-------|--------|----------|-----------------|------------------|-----------------|--------------------|
| Shade | Glass    | Satin Etched | 1        |             |        |       |        | 9        |                 |                  |                 |                    |

Replacement Bulb Data:

| Product #      | Material | Finish | Type | Base   | Watts | Watts Consumed | Volts | Hours | Lumens | Temp (°K) | CRI |
|----------------|----------|--------|------|--------|-------|----------------|-------|-------|--------|-----------|-----|
| 10A19DLED27JA8 | Frosted  |        | A19  | Medium | 10    | 10             | 120v  | 25000 | 800    | 2700      | 90  |

Shipping Information:

| Package Type | Product #   | Quantity | UPC          | Length | Width | Height | Cube | Weight | Fr. Class | UPS Ship |
|--------------|-------------|----------|--------------|--------|-------|--------|------|--------|-----------|----------|
| Individual   | 78660EN-185 | 1        | 785652035227 | 12.25  | 12.25 | 10.25  |      | 1      | 100       | Yes      |

Sea Gull Lighting reserves the right to revise the design of components of any product due to parts availability or change in safety listing standards without assuming any obligation or liability to modify any products previously manufactured and without notice. This literature depicts a product design that is the sole and exclusive property of Sea Gull Lighting. In compliance with U.S. copyright and patent requirements, notification is hereby presented in this form that this literature, or the product it depicts, is not to be copied, altered or used in any manner without the express written consent of, or contrary to the best interests of Sea Gull Lighting A Generation Brands Company.

In the interest of product improvement, BEGA reserves the right to make technical changes without notice.

BEGA 1000 Bega Way, Carpinteria, CA 93013 (805)684-0533 Fax (805)566-9474 [www.bega-us.com](http://www.bega-us.com) © Copyright BEGA-US 2017

2/16/2017

(A) LIGHTED BOLLARD

(B) CANOPY DOWNLIGHT



EAST BAY LOT A  
 WESTMAN MILL  
 510 STATE AVE OLYMPIA, WA. 98501

Project No: 1514  
 CD SET  
 01/08/2018

CUT SHEETS

A6.10.1

All material herein constitutes the original and unpublished work of the architect and may not be used, duplicated, or disclosed without the written consent of the architect. Copyright © 2017 by Thomas Architecture Studio. All rights reserved.



## FEATURES & SPECIFICATIONS

**INTENDED USE** — Built on the compact, low-profile Z strip channel, this LED strip offers long maintenance-free life, several color temperatures, lumen outputs and lengths. Ideal for new construction and retrofit applications in T5 and T8 lengths. Ideal for uplight and downlight in commercial, retail, manufacturing, warehouse, cove and display applications. **Certain airborne contaminants can diminish integrity of acrylic.** [Click here for Acrylic Environmental Compatibility table for suitable uses.](#)

**CONSTRUCTION** — Compact-design channel and cover are formed from code-gauge cold-rolled steel. Easy to install row aligner included for continuous row mounting.

**Finish:** Paint options include high-gloss, baked white enamel (WH), galvanized (GALV), matte black (MB) and smoke gray (SKGY). Five-stage iron phosphate pre-treatment ensures superior paint adhesion and rust resistance.

**OPTICS** — Standard diffuse snap on/snap off lens eliminates pixels, improves uniformity and minimizes glare. L/LENS option available.

**ELECTRICAL** — Utilizes high-output LEDs integrated on a two-layer circuit board, ensuring cool-running operation. Optional internal pluggable wiring harness for reduced labor cost in row mounting applications. (See PLR... ordering information on page 3.) Electronic LED driver is rated for 75 input watts maximum (see Operational Data on page two for actual wattage consumption). **multi-volt input and 0-10V dimming standard.** This fixture is designed to withstand a maximum line surge of 1.5kV at 0.75kA combination wave for indoor locations, for applications requiring higher level of protection additional surge protection must be provided.

LEDs provide nominal 80 CRI at 3000 K, 3500 K, 4000 K, or 5000 K.

Lumen output up to 2,000 lumens per foot. In 86°F (30°C) ambient environments. Luminaire should be installed in applications where ambient temperatures do not exceed 86°F (30°C).

**INSTALLATION** — Tool-less channel cover for easy installation.

Fixture may be surface mounted (with or without ZSPRG hanger), pendant or stem mounted with appropriate mounting options. Three-point aligner locks in place for easy continuous row mounting.

**LISTINGS** — CSA certified to US and Canadian safety standards. For use in damp locations between -4°F (-20°C) and 86°F (30°C).

DesignLights Consortium® (DLC) qualified product. Not all versions of this product may be DLC qualified. Please check the DLC Qualified Products List at [www.designlights.org](http://www.designlights.org) to confirm which versions are qualified.

**WARRANTY** — 5-year limited warranty. Complete warranty terms located at [www.aicitybrands.com/CustomersResources/Terms\\_and\\_conditions.aspx](http://www.aicitybrands.com/CustomersResources/Terms_and_conditions.aspx)

**Note:** Actual performance may differ as a result of end-user environment and application.

All values are design or typical values, measured under laboratory conditions at 25 °C.

Specifications subject to change without notice.

|                |  |
|----------------|--|
| Catalog Number |  |
| Notes          |  |
| Type           |  |



LED Striplight

ZL1N

24", 48" and 96" Lengths



**ORDERING INFORMATION** Lead times will vary depending on options selected. Consult with your sales representative. **Example:** ZL1N L48 3000LM FST MVOLT 40K 80CRI WH

| Series               | Length  | Nominal lumens <sup>1</sup>      | Diffuser                     | Voltage               | Color temperature | Color rendering index | Options   | Paint finish    |
|----------------------|---------|----------------------------------|------------------------------|-----------------------|-------------------|-----------------------|---|-----------------|
| ZL1N LED striplight  | L24 24" | 1500LM 1,500 lumens <sup>2</sup> | FST Snap on frosted, diffuse | MVOLT 120-277V        | 30K 3000 K        | 80CRI 80 CRI          | PLR Plug-in wiring <sup>4</sup>                 | WH White        |
|                      |         | 2500LM 2,500 lumens <sup>2</sup> | L/LENS No diffuser           | 120 120V              | 35K 3500 K        | 90CRI 90 CRI          |   | GALV Galvanized |
|                      |         | 3500LM 3,500 lumens <sup>2</sup> | SBL Straight blade louver    | 208 208V              | 40K 4000 K        |                       | PLR1LVG Plug-in wiring-low voltage <sup>5</sup> | MB Matte black  |
|                      | L46 46" | 3000LM 3,000 lumens <sup>2</sup> |                              | 240 240V              | 50K 5000 K        |                       | SKGY Smoke gray                                 |                 |
| TZL1N LED striplight | L96 96" | 5000LM 5,000 lumens              |                              | 277 277V              |                   |                       | E7W Emergency battery pack <sup>6,7</sup>       |                 |
|                      |         | 7000LM 7,000 lumens              |                              | 347 347V <sup>1</sup> |                   |                       |   |                 |
|                      |         | 14000LM 14,000 lumens            |                              | 480 480V <sup>1</sup> |                   |                       |   |                 |

| Accessories: Order as separate catalog number. |   |       |   |
|--|---|-------|---|
| HC36   | Hanger chain, 36"   | LSXR  | Sensor Switch <sup>3</sup> LSXR occupancy sensor <sup>2</sup> |
| ZACVH  | Aircraft cable 10' (one pair)                             | ZSPRG | For 15/16" T-grid only  |
| ZLANGKT  | Luma-tilt™ angle bracket for shelf or ledge mounting only | WG224 | 24" wireguard, white  |
| NPP16D   | nLight® switching/dimming module                          | WG248 | 48" wireguard, white <sup>2</sup>                             |

- Notes**
- See Operational Data on page 2 for actual lumens.
  - Not available with 0-10V dimming option.
  - Not available with L24, 24" fixture. 347V and 480V utilize a step-down transformer.
  - See ordering information on page
  - Must use ZSPRG for surface mounting when ordering this option.
  - Must specify voltage. 120, 208, 240 or 277V.
  - Order 2 for tandem double length fixtures (TZL1N).

INDUSTRIAL

ZL1N  
Page 1 of 4

(C) LINEAR LED STRIP LIGHT – CEILING MOUNTED

## LED Outdoor Post Lantern



Finish: Antique Bronze

### Dimensions:

|                  |         |                        |                        |
|------------------|---------|------------------------|------------------------|
| <b>Diameter:</b> | 9"      | <b>Wire:</b>           | 6" (color/Black/White) |
| <b>Height:</b>   | 22 7/8" | <b>Mounting Proc.:</b> | Post Mount             |
|                  |         | <b>Connection:</b>     | Mounted To Box         |
|                  |         | <b>Bulb Type:</b>      | Modules                |
|                  |         | <b>Bulb Base:</b>      | Integrated             |
|                  |         | <b>Volts:</b>          | 120                    |
|                  |         | <b>Watts:</b>          | 14                     |
|                  |         | <b>Watts Consumed:</b> | 14                     |
|                  |         | <b>Watts Rated:</b>    | 14                     |
|                  |         | <b>Hours Rated:</b>    | 50000                  |
|                  |         | <b>Lumens:</b>         | 1000                   |
|                  |         | <b>Bulb Temp:</b>      | 2700 °K                |
|                  |         | <b>CRI:</b>            | 90                     |

### Features:

- Advanced LED technology that warms in color when dimmed (2700K - 2200K).
- Meets Title 24 energy efficiency standards

### Material List:

- 1 Body - Aluminum - Antique Bronze
- 1 Holder - Aluminum - Antique Bronze

### Safety Listing:

Safety Listed for Wet Locations

### Instruction Sheets:

Trilingual (English, Spanish, and French)

### Shade / Glass / Diffuser Details:

| Part  | Material | Finish            | Quantity | Item Number | Length | Width | Height   | Diameter | Fitter Diameter | Shade Top Length | Shade Top Width | Shade Top Diameter |
|-------|----------|-------------------|----------|-------------|--------|-------|----------|----------|-----------------|------------------|-----------------|--------------------|
| Shade | Glass    | Opal Cased Etched | 1        |             |        |       | 17 11/16 | 7 1/16   |                 |                  |                 |                    |

### Backplate / Canopy Details:

| Type | Height / Length | Width | Depth | Diameter | Outlet Box Up | Outlet Box Down |
|------|-----------------|-------|-------|----------|---------------|-----------------|
| Post | 3               |       |       | 3        |               |                 |



T H O M A S  
architecture studios

525 COLUMBIA ST SW | OLYMPIA, WA 98501  
360.915.8775 | TASOLYMPIA.COM

EAST BAY LOT A  
WESTMAN MILL  
510 STATE AVE OLYMPIA, WA. 98501

Project No: 1514  
CD SET  
01/08/2018

CUT SHEETS

A6.10.2

All material herein constitutes the original and unpublished work of the architect and may not be used, duplicated, or disclosed without the written consent of the architect. Copyright © 2017 by Thomas Architecture Studio. All rights reserved.



**TRADITIONAL  
AREA LIGHT**

DCL 570 with Slip Fitter Mount Version shown above.

**FEATURES / BENEFITS**

- Premium brand LEDs (Samsung® or LG® chips depending on SKU) YG® driver technology
- Dimming option available
- Precision die cast
- Default Surface mount
- Optional arm mount (sold separately)
- Wet Location rated fixture for outdoor use
- Chip and fade resistant powder coat finish in any color
- Industrial grade, Standard button Photocell
- Easy installation with U-bracket or slip fitter mount



DCL 1000 with Slip Fitter Mount Version shown above.

**SELL WITH  
CONFIDENCE**



LM-79

**TRADITIONAL  
AREA LIGHT  
SPECIFICATIONS**

**OVERVIEW:** UL wet listed die-cast aluminum construction with impact resistant UV Stabilized polycarbonate linear prismatic lens complete with stainless steel hardware. Standard Type V optics included.

**DLC Listed**

| CCT            | INDUSTRY WATTAGE | LED WATTAGE | LUMENS L/M | LUMENS PER WATT | REPLACES INCW | CRI | OPTICS        | VOLTAGE (VAC) | WEIGHT (LBS) | DIMENSIONS (INCHES)  | MASTER PACK QUANTITY |
|----------------|------------------|-------------|------------|-----------------|---------------|-----|---------------|---------------|--------------|----------------------|----------------------|
| <b>DCL 570</b> |                  |             |            |                 |               |     |               |               |              |                      |                      |
| 4K             | 115W             | 100W        | 12571      | 108             | 250W          | 85  | Forward Throw | 120-277       | 21 lbs.      | 17.00 x 17.00 x 7.20 | 1                    |
|                | 145W             | 145W        | 16307      | 113             | 400W          |     |               |               |              |                      |                      |
|                | 200W             | 170W        | 20885      | 109             | 750W          |     |               |               |              |                      |                      |
| 5K             | 115W             | 100W        | 12814      | 111             | 250W          | 85  | Forward Throw | 120-277       | 21 lbs.      | 17.00 x 17.00 x 7.20 | 1                    |
|                | 145W             | 145W        | 16639      | 115             | 400W          |     |               |               |              |                      |                      |
|                | 200W             | 170W        | 21449      | 111             | 750W          |     |               |               |              |                      |                      |

| CCT             | INDUSTRY WATTAGE | LED WATTAGE | LUMENS L/M | LUMENS PER WATT | REPLACES INCW | CRI | OPTICS        | VOLTAGE (VAC) | WEIGHT (LBS) | DIMENSIONS (INCHES)   | MASTER PACK QUANTITY |
|-----------------|------------------|-------------|------------|-----------------|---------------|-----|---------------|---------------|--------------|-----------------------|----------------------|
| <b>DCL 1000</b> |                  |             |            |                 |               |     |               |               |              |                       |                      |
| 4K              | 250W             | 238W        | 27935      | 117             | 1000W         | 85  | Forward Throw | 120-277       | 45 lbs.      | 23.90 x 23.90 x 10.20 | 1                    |
|                 | 300W             | 291W        | 36111      | 124             | 1000W         |     |               |               |              |                       |                      |
|                 | 400W             | 360W        | 48926      | 126             | 1000W         |     |               |               |              |                       |                      |
| 5K              | 250W             | 238W        | 28144      | 118             | 1000W         | 85  | Forward Throw | 120-277       | 45 lbs.      | 23.90 x 23.90 x 10.20 | 1                    |
|                 | 300W             | 291W        | 34626      | 118             | 1000W         |     |               |               |              |                       |                      |
|                 | 400W             | 360W        | 45512      | 116             | 1000W         |     |               |               |              |                       |                      |

**BUILD YOUR ORDER SKU NUMBER** Sample: DCL570-115W-4K-PC-V9-BZ-SF

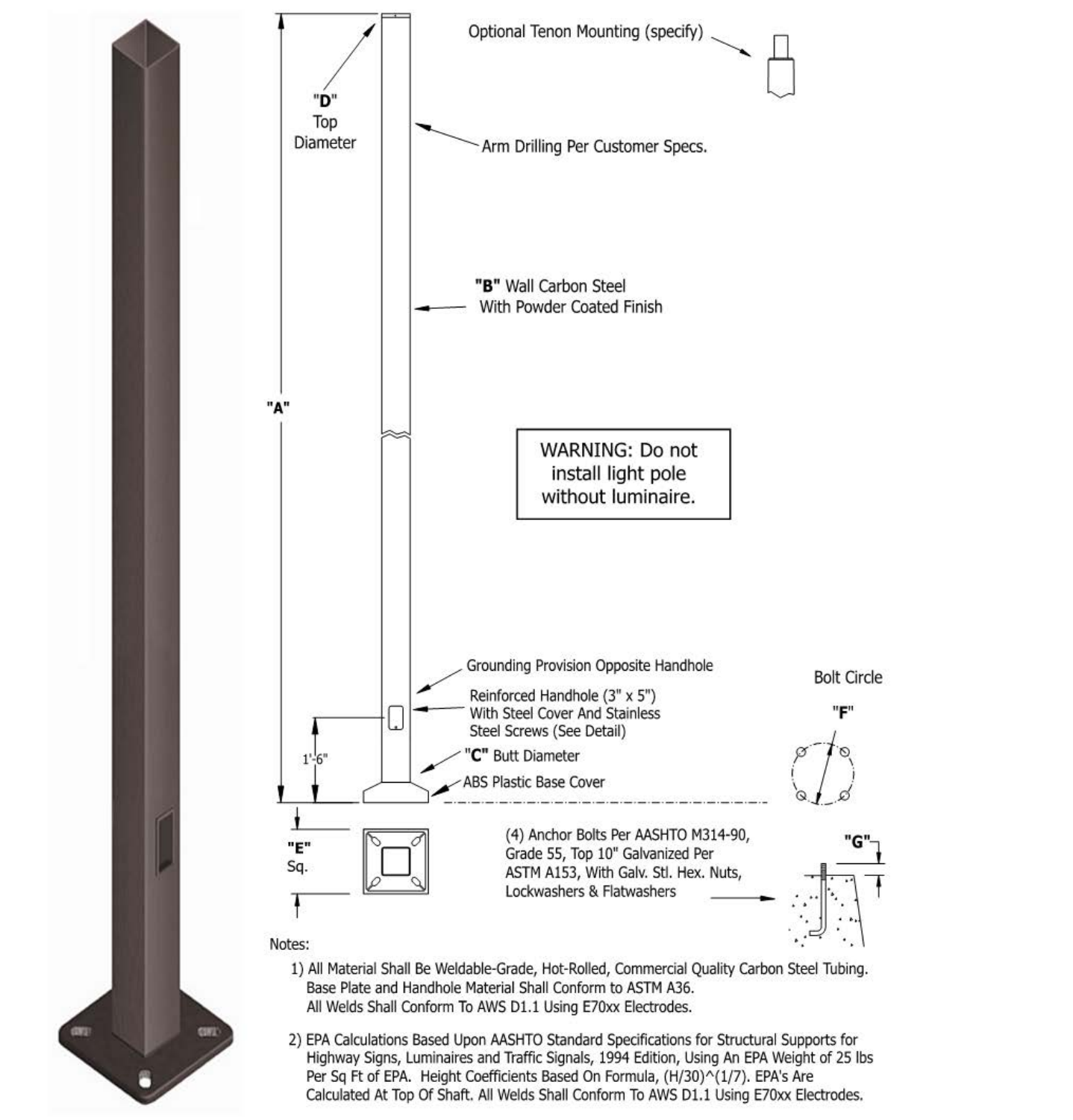
Begin your customized order with the Fixture Body Type and Model Number. Select your Industry Wattage and CCT of choice. Next, the Electrical Accessory, Voltage, Housing Finish and Mounting. If this Fixture doesn't have any options, leave it blank and move onto the next available option. An example of a completed custom sku number is provided below. (This order form is only for DCL570/1000)

| FIXTURE BODY TYPE MODEL | INDUSTRY WATTAGE | CCT | ELECTRICAL ACCESSORY | VOLTAGE | HOUSING FINISH | MOUNTING |
|-------------------------|------------------|-----|----------------------|---------|----------------|----------|
| DCL 570                 | 115W             | 4K  | PC                   | V9      | BZ             | SF       |

PC = Photocell  
 DD = Dimming  
 ST = Standard  
 PD = Photocell Dimming Driver  
 PS = Photocell (Canada Only)  
 V1 = 120V  
 V2 = 208V  
 V3 = 220V  
 V4 = 240V  
 V5 = 277V  
 V6 = 347V (Canada Only)  
 V7 = 120-277V (see for photocell)  
 BZ = Bronze  
 BK = Black  
 SL = Silver  
 WH = White  
 SF = Slip Fitter  
 ZB = Zinc Bracket

**Square Straight Steel Pole - 4 Bolt Base**

**Square Straight Steel - 4 Bolt Base Light Poles**

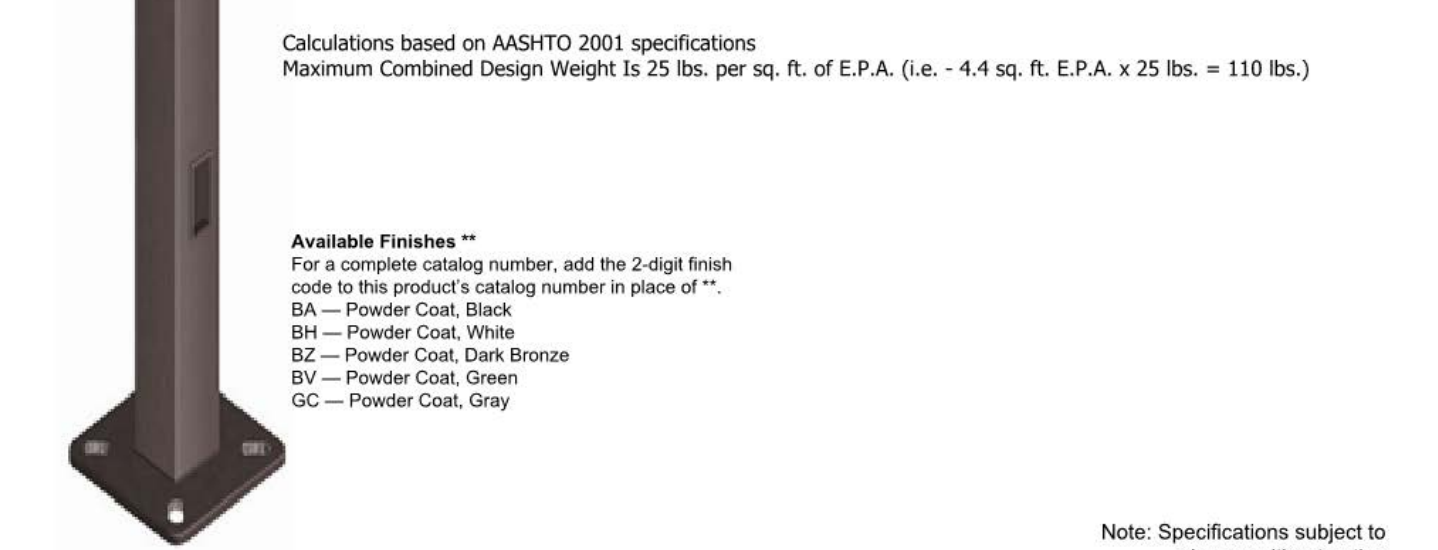


AffordableLighting.com A Division of Complete Lighting Source, Inc.  
 6209 Amber Hills Rd. • Trussville, AL • (800) 683-8825 • Fax: (205) 951-9578 • sales@affordablelighting.com

**Square Straight Steel Pole - 4 Bolt Base**

**Square Straight Steel - 4 Bolt Base Light Poles**

| Catalog #   | Mt. height | Wall thickness | Shaft size | Base size | Bolt circle | Bolt projection | Bolt size   | Pole weight | EPA 90 | EPA 100 | EPA 110 | EPA 120 | EPA 130 | EPA 140 | EPA 150 |
|-------------|------------|----------------|------------|-----------|-------------|-----------------|-------------|-------------|--------|---------|---------|---------|---------|---------|---------|
| CLS-SSS10B4 | 10 ft.     | 11 gauge       | 4x4 in.    | 11 in.    | 8-11 in.    | 2.75 in.        | 3/4x17x3in. | 76 lbs.     | 28     | 22.4    | 20      | 16.4    | 13.8    | 11.6    | 9.8     |
| CLS-SSS12B4 | 12 ft.     | 11 gauge       | 4x4 in.    | 11 in.    | 8-11 in.    | 2.75 in.        | 3/4x17x3in. | 88 lbs.     | 22.4   | 17.8    | 15.8    | 12.8    | 10.6    | 8.8     | 7.2     |
| CLS-SSS14B4 | 14 ft.     | 11 gauge       | 4x4 in.    | 11 in.    | 8-11 in.    | 2.75 in.        | 3/4x17x3in. | 101 lbs.    | 18.2   | 14.2    | 12.6    | 10      | 8.2     | 6.6     | 5.4     |
| CLS-SSS15B4 | 15 ft.     | 11 gauge       | 4x4 in.    | 11 in.    | 8-11 in.    | 2.75 in.        | 3/4x17x3in. | 107 lbs.    | 16.1   | 12.5    | 10.9    | 8.5     | 6.9     | 5.4     | 4.4     |
| CLS-SSS16B4 | 16 ft.     | 11 gauge       | 4x4 in.    | 11 in.    | 8-11 in.    | 2.75 in.        | 3/4x17x3in. | 113 lbs.    | 15     | 11.6    | 10      | 7.8     | 6.2     | 4.8     | 3.8     |
| CLS-SSS18B4 | 18 ft.     | 11 gauge       | 4x4 in.    | 11 in.    | 8-11 in.    | 2.75 in.        | 3/4x17x3in. | 126 lbs.    | 12     | 9       | 7.8     | 6       | 4.4     | 3.4     | 2.4     |
| CLS-SSS20B4 | 20 ft.     | 11 gauge       | 4x4 in.    | 11 in.    | 8-11 in.    | 2.75 in.        | 3/4x17x3in. | 138 lbs.    | 9.6    | 7       | 6       | 4.4     | 3       | 2       | 1.2     |
| CLS-SSS20D5 | 20 ft.     | 11 gauge       | 5x5 in.    | 11 in.    | 10-12 in.   | 3.375 in.       | 1x36x4in.   | 194 lbs.    | 14.8   | 11      | 9.2     | 6.8     | 5       | 3.4     | 2.2     |
| CLS-SSS20D4 | 20 ft.     | 7 gauge        | 4x4 in.    | 8 in.     | 8-9 in.     | 2.75 in.        | 3/4x17x3in. | 195 lbs.    | 15.8   | 12.2    | 10.6    | 8.4     | 6.6     | 5.2     | 4       |
| CLS-SSS20D5 | 20 ft.     | 7 gauge        | 5x5 in.    | 11 in.    | 10-12 in.   | 3.375 in.       | 1x36x4in.   | 262 lbs.    | 27.4   | 21.2    | 18.6    | 15      | 12.2    | 9.8     | 7.8     |
| CLS-SSS25B4 | 25 ft.     | 11 gauge       | 4x4 in.    | 8 in.     | 8-9 in.     | 2.75 in.        | 3/4x17x3in. | 169 lbs.    | 5.2    | 3.2     | 2.4     | 1.2     | -       | -       | -       |
| CLS-SSS25B5 | 25 ft.     | 11 gauge       | 5x5 in.    | 11 in.    | 10-12 in.   | 3.375 in.       | 1x36x4in.   | 233 lbs.    | 8.4    | 5.8     | 4.2     | 2.4     | -       | -       | -       |
| CLS-SSS25D4 | 25 ft.     | 7 gauge        | 4x4 in.    | 8 in.     | 8-9 in.     | 2.75 in.        | 3/4x17x3in. | 240 lbs.    | 10     | 7.4     | 6.2     | 4.6     | 3.2     | 2.2     | 1.2     |
| CLS-SSS25D5 | 25 ft.     | 7 gauge        | 5x5 in.    | 11 in.    | 10-12 in.   | 3.375 in.       | 1x36x4in.   | 319 lbs.    | 18.2   | 13.8    | 11.8    | 9       | 6.8     | 5       | 3.4     |
| CLS-SSS30B5 | 30 ft.     | 11 gauge       | 5x5 in.    | 11 in.    | 10-12 in.   | 3.375 in.       | 1x36x4in.   | 273 lbs.    | 3.8    | 1.6     | -       | -       | -       | -       | -       |
| CLS-SSS30D4 | 30 ft.     | 7 gauge        | 4x4 in.    | 8 in.     | 8-9 in.     | 2.75 in.        | 3/4x17x3in. | 286 lbs.    | 6      | 4       | 3       | 1.8     | -       | -       | -       |
| CLS-SSS30D5 | 30 ft.     | 7 gauge        | 5x5 in.    | 11 in.    | 10-12 in.   | 3.375 in.       | 1x36x4in.   | 376 lbs.    | 12     | 8.4     | 6.8     | 4.6     | 2.8     | 1.4     | -       |
| CLS-SSS30D6 | 30 ft.     | 7 gauge        | 6x6 in.    | 11 in.    | 10-12 in.   | 3.375 in.       | 1x36x4in.   | 461 lbs.    | 19.4   | 14.2    | 11.8    | 8.4     | 5.8     | 3.6     | 1.8     |
| CLS-SSS35D5 | 35 ft.     | 7 gauge        | 5x5 in.    | 11 in.    | 10-12 in.   | 3.375 in.       | 1x36x4in.   | 433 lbs.    | 7.2    | 4.4     | 3       | 1.2     | -       | -       | -       |
| CLS-SSS35D6 | 35 ft.     | 7 gauge        | 6x6 in.    | 11 in.    | 10-12 in.   | 3.375 in.       | 1x36x4in.   | 530 lbs.    | 12.8   | 8.4     | 6.4     | 3.6     | 1.4     | -       | -       |
| CLS-SSS39D6 | 39 ft.     | 7 gauge        | 6x6 in.    | 11 in.    | 10-12 in.   | 3.375 in.       | 1x36x4in.   | 586 lbs.    | 8.4    | 4.6     | 3       | -       | -       | -       | -       |



Note: Specifications subject to change without notice

AffordableLighting.com A Division of Complete Lighting Source, Inc.  
 6209 Amber Hills Rd. • Trussville, AL • (800) 683-8825 • Fax: (205) 951-9578 • sales@affordablelighting.com

**TRADITIONAL  
AREA LIGHT  
LINE DRAWINGS**

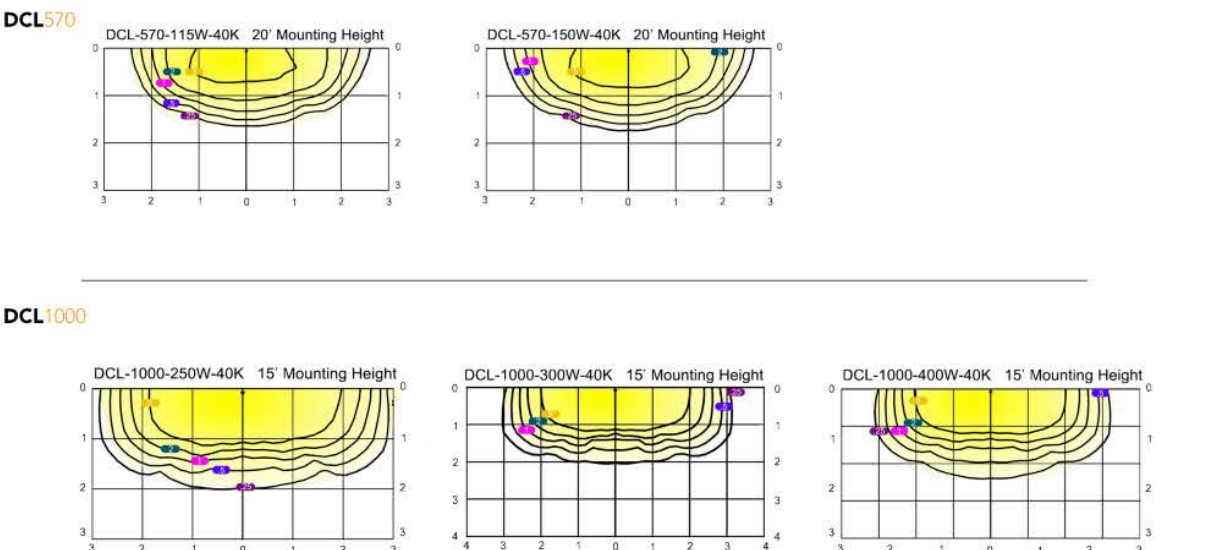
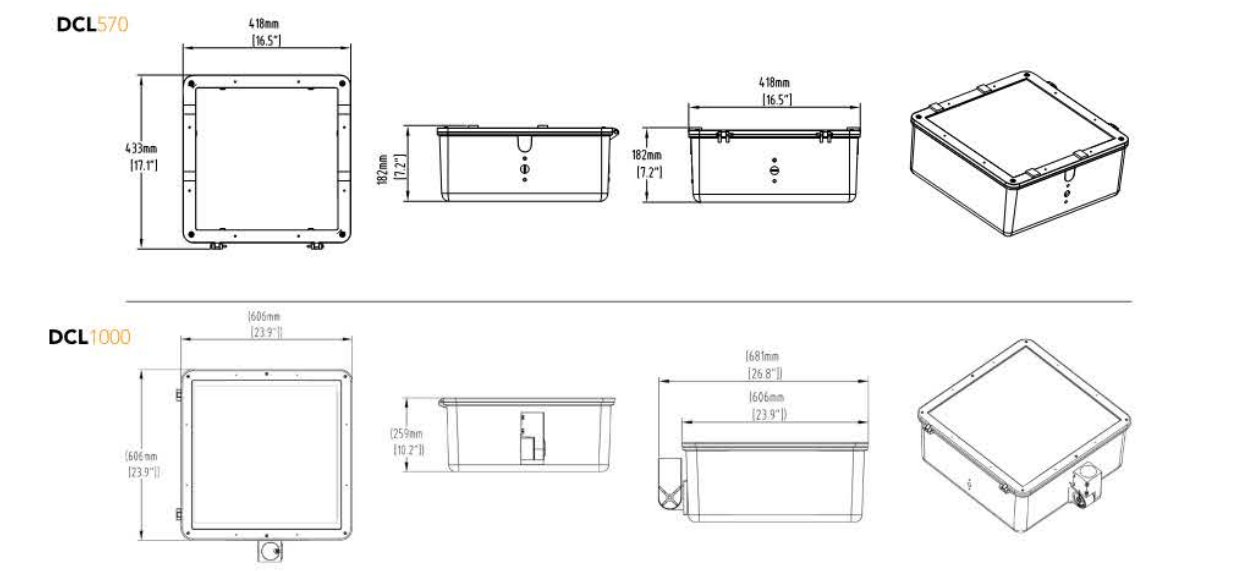


DCL 570 & Slip Fitter Mount Version shown above.

**TRADITIONAL  
AREA LIGHT  
FAMILY PHOTOMETRY**



DCL 1000 with Slip Fitter Mount Version shown above.



**(E) POLE LIGHT**

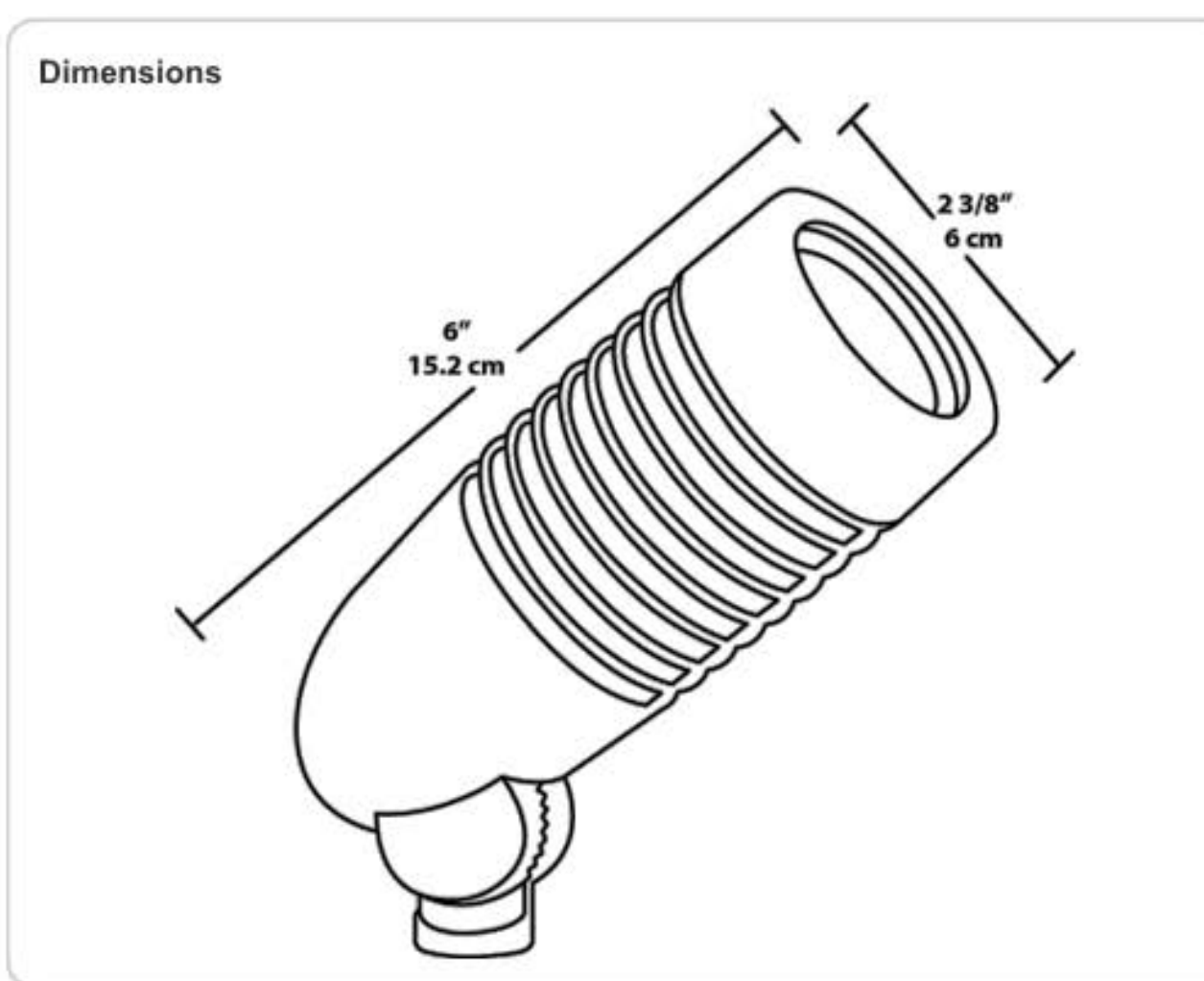
**LFLED5A**



|                     |              |
|---------------------|--------------|
| <b>Project:</b>     | <b>Type:</b> |
| <b>Prepared By:</b> | <b>Date:</b> |

|                    |                  |                 |              |
|--------------------|------------------|-----------------|--------------|
| <b>Driver Info</b> |                  | <b>LED Info</b> |              |
| Type:              | Constant Current | Watts:          | 5W           |
| 120V:              | 0.1A             | Color Temp:     | 5000K (Cool) |
| 208V:              | 0.06A            | Color Accuracy: | 68 CRI       |
| 240V:              | 0.05A            | L70 Lifespan:   | 100000       |
| 277V:              | N/A              | Lumens:         | 299          |
| Input Watts:       | 5W               | Efficacy:       | 59 LPW       |
| Efficiency:        | 98%              |                 |              |

**LFLED5A**



**Features**

- Microprismatic diffusion lens for even light distribution
- 4H x 4V NEMA type with 44° Beam Angle
- Optional spot hood reflector available
- 100,000 hour life based on LM-80 tests
- 5-year warranty

**Ordering Matrix**

| Family | Watts  | Color Temp  | Finish   |
|--------|--------|---|--|
| LFLED  | 5 = 5W | = 5000K (Cool)<br>Y = 3000K (Warm)<br>N = 4000K (Neutral) | A = Bronze<br>W = White<br>B = Black<br>VG = Verde Green |

**Technical Specifications**

|   |  |  |
|---|--|--|
| <p><b>Listings</b></p> <p><b>UL Listing:</b><br/>Suitable for wet locations. Suitable for ground mounting.</p> <p><b>IESNA LM-79 &amp; IESNA LM-80 Testing:</b><br/>RAB LED luminaires have been tested by an independent laboratory in accordance with IESNA LM-79 and 80, and have received the Department of Energy "Lighting Facts" label.</p> <p><b>LED Characteristics</b></p> <p><b>Lifespan:</b><br/>100,000-hour LED lifespan based on IES LM-80 results and TM-21 calculations.</p> <p><b>LED:</b><br/>5 Watt high output, long-life LED.</p> <p><b>Color Consistency:</b><br/>7-step MacAdam Ellipse binning to achieve consistent fixture-to-fixture color.</p> <p><b>Color Stability:</b><br/>LED color temperature is warranted to shift no more than 200K in CCT over a 5 year period.</p> <p><b>Color Accuracy:</b><br/>68 CRI</p> <p><b>Color Temperature (Nominal CCT):</b><br/>5000K</p> <p><b>Color Uniformity:</b><br/>RAB's range of CCT (Correlated Color Temperature) follows the guidelines of the American National Standard for (SSL) Products, ANSI C78.377-2015.</p> | <p><b>Optical</b></p> <p><b>Spot Lens:</b><br/>Optional spot lens enables a tool-less conversion to a NEMA Type 3H x 3V. Great for accent lighting or grazing buildings for an artistic touch.</p> <p><b>Fixture Efficacy:</b><br/>59 Lumens per Watt</p> <p><b>NEMA Type:</b><br/>4H x 4V</p> <p><b>Construction</b></p> <p><b>Lens:</b><br/>Microprismatic diffusion lens for smooth and even light distribution.</p> <p><b>Cold Weather Starting:</b><br/>Minimum starting temperature is -40°F/-40°C.</p> <p><b>Ambient Temperature:</b><br/>Suitable for use in 40°C (104°F) ambient temperatures.</p> <p><b>Thermal Management:</b><br/>Optimized using computational fluid dynamics software to ensure long LED and driver lifespan.</p> <p><b>Housing:</b><br/>Precision die-cast aluminum housing, hood and mounting arm.</p> <p><b>Gaskets:</b><br/>High Temperature Silicone.</p> | <p><b>Finish:</b><br/>Our environmentally friendly polyester powder coatings are formulated for high-durability and long-lasting color, and contains no VOC or toxic heavy metals.</p> <p><b>Green Technology:</b><br/>Mercury and UV free, and RoHS compliant.</p> <p><b>Electrical</b></p> <p><b>Driver:</b><br/>Constant Current, Class 2, 100-240V, 50-60Hz, 100-240VAC 0.18A.</p> <p><b>Other</b></p> <p><b>Equivalency:</b><br/>The LFLED5 is equivalent in delivered lumens to a 35W MR16.</p> <p><b>Warranty:</b><br/>RAB warrants that our LED products will be free from defects in materials and workmanship for a period of five (5) years from the date of delivery to the end user, including coverage of light output, color stability, driver performance and fixture finish.</p> <p><b>California Title 24:</b><br/>LFLED5 complies with 2013 California Title 24 building and electrical codes as a commercial outdoor non-pole-mounted fixture &lt; 30 Watts when used with a photosensor control. Select catalog number PCS900(120V) or PCS900/277 to order a photosensor.</p> <p><b>Patents:</b><br/>The design of the LFLED is protected by Taiwan Patent 01510966 and pending patents in US, Canada, China, and Mexico.</p> |
|---|--|--|



EAST BAY LOT A  
WESTMAN MILL  
510 STATE AVE OLYMPIA, WA. 98501

Project No: 1514  
CD SET  
01/08/2018

(F) CANOPY SIGNAGE LIGHT (TOP MOUNT)

CUT SHEETS

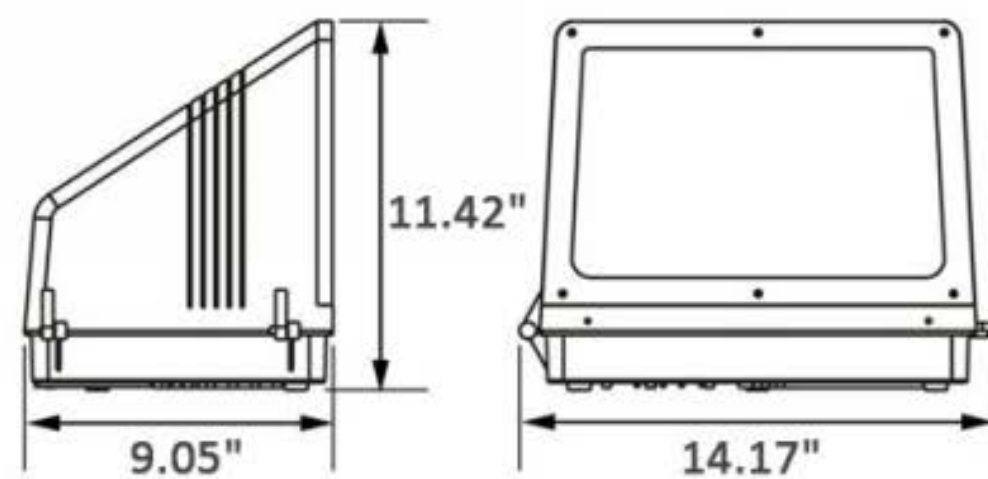
A6.10.4

All material herein constitutes the original and unpublished work of the architect and may not be used, duplicated, or disclosed without the written consent of the architect. Copyright © 2017 by Thomas Architecture Studio. All rights reserved.



PROJECT NAME: \_\_\_\_\_ CATALOG NUMBER: \_\_\_\_\_  
 NOTES: \_\_\_\_\_ FIXTURE SCHEDULE: \_\_\_\_\_

**LED CUTOFF WALL PACK  
CWP SERIES**



**PRODUCT DESCRIPTION:**

The CWP Series full cutoff LED wall pack from Diva Light is the perfect replacement for traditional outdoor wall packs. This LED wall pack is powerful and energy-efficient, capable of replacing up to 400 watts metal halide fixtures.

The CWP Series has a 50,000 hour LED life to eliminate frequent lamp replacements. LED cutoff wall packs save energy, lower maintenance costs, and prevent light pollution.

**APPLICATIONS:**

- Apartments
- Hospitals
- Auto dealerships
- Educational facilities
- Parks and recreation

**FEATURES:**

- Heavy duty die-cast aluminum housing
- Tempered, impact-resistant clear glass lens
- Integral high performance LED driver
- 0-10V dimming standard, 10-100%
- Universal input voltage 120-277V
- ETL/cETL listed for outdoor locations

**ORDERING INFORMATION:**

Example: CWP-45WU50K

| CWP-Series | Wattage      | U Voltage  | 50K CCT   |
|------------|--------------|------------|-----------|
| CWP        | 45W 45 watts | U 120-277V | 50K 5000K |
|            | 60W 60 watts |            |           |
|            | 75W 75watts  |            |           |

| Accessories: ordered separately |                                   |
|---------------------------------|-----------------------------------|
| EK4036S                         | Button Photocell, 120-277V        |
| EK4236S                         | Stem & Swivel Photocell, 120-277V |

Phone: 1-855-303-0665 | Fax: 1-818-936-0645 | Web: www.divalite.com | Email: info@divalite.com

Revised: 07-19-17



**LED CUTOFF WALL PACK  
CWP SERIES**

**SPECIFICATIONS:**

| SKU                   | CWP-45WU50K                         | CWP-60WU50K  | CWP-75WU50K  |
|-----------------------|-------------------------------------|--------------|--------------|
| Power Consumption     | 44 Watts                            | 57 Watts     | 70 Watts     |
| Lumens                | 4598 Lumens                         | 6689 Lumens  | 8055 Lumens  |
| Efficacy              | 105 lm/W                            | 117 lm/W     | 115 lm/W     |
| Equivalency           | 175 Watts MH                        | 250 Watts MH | 400 Watts MH |
| CRI                   | 85                                  | 84           | 75           |
| Color Temperature     | 5000K                               |              |              |
| Power Factor          | > 0.90                              |              |              |
| Input Voltage         | 120-277 VAC                         |              |              |
| Operating Temperature | -30°F to 130°F                      |              |              |
| Dimming               | 0-10V dimming standard, 10-100%     |              |              |
| Mounting              | Wall surface or standard outlet box |              |              |
| Housing Material      | Die-cast aluminum                   |              |              |
| Lens                  | Tempered clear glass                |              |              |
| Finish                | Bronze                              |              |              |
| Weight                | 8.38 lbs                            |              |              |
| Size (LxWxH)          | 14.17" x 11.42" x 9.05"             |              |              |
| Environment           | IP65, suitable for wet location     |              |              |
| Material              | RoHS Compliant, no mercury          |              |              |
| Certificates          | cETL, ETL, DLC, LM79, LM80          |              |              |
| Rate Life             | 50,000 hours                        |              |              |
| Warranty              | 5 Years                             |              |              |

Phone: 1-855-303-0665 | Fax: 1-818-936-0645 | Web: www.divalite.com | Email: info@divalite.com

Revised: 07-19-17



**T H O M A S  
architecture studios**  
 525 COLUMBIA ST SW | OLYMPIA, WA 98501  
 360.915.8775 | TASOLYMPIA.COM

EAST BAY LOT A  
**WESTMAN MILL**  
 510 STATE AVE OLYMPIA, WA. 98501

Project No: 1514  
 CD SET  
 01/08/2018

**CUT SHEETS**

**A6.10.5**

All material herein constitutes the original and unpublished work of the architect and may not be used, duplicated, or disclosed without the written consent of the architect. Copyright © 2017 by Thomas Architecture Studio. All rights reserved.



|                        |                          |
|------------------------|--------------------------|
| <b>ATLANTIS 1648SK</b> |                          |
| SATIN BLACK            |                          |
| WIDTH:                 | 6.0"                     |
| HEIGHT:                | 16.0"                    |
| WEIGHT:                | 4.0 LBS                  |
| MATERIAL:              | EXTRUDED ALUMINUM        |
| GLASS:                 | ETCHED GLASS LENS        |
| BACKPLATE WIDTH:       | 4.5"                     |
| BACKPLATE HEIGHT:      | 4.5"                     |
| SOCKET:                | 2-20W MR-16<br>*INCLUDED |
| DARK SKY:              | YES                      |
| EXTENSION:             | 3.5"                     |
| TTO:                   | 13.8"                    |
| CERTIFICATION:         | C-US WET RATED           |
| VOLTAGE:               | 120V                     |
| UPC:                   | 640665164855             |

AT HINKLEY, WE EMBRACE THE DESIGN PHILOSOPHY THAT YOU CAN MERGE TOGETHER THE LIGHTING, FURNITURE, ART, COLORS AND ACCESSORIES YOU LOVE INTO A BEAUTIFUL ENVIRONMENT THAT DEFINES YOUR OWN PERSONAL STYLE. WE HOPE YOU WILL BE INSPIRED BY OUR COMMITMENT TO KEEP YOUR 'LIFE AGLOW.'

*life*AGLOW®

(H) EXTERIOR WALL SCONCE

EAST BAY LOT A  
**WESTMAN MILL**  
 510 STATE AVE OLYMPIA, WA. 98501

Project No: 1514  
**CD SET**  
 01/08/2018

**CUT SHEETS**

**A6.10.6**

All material herein constitutes the original and unpublished work of the architect and may not be used, duplicated, or disclosed without the written consent of the architect. Copyright © 2017 by Thomas Architecture Studio. All rights reserved.



## Hardie® Reveal® Panel System

### Embody a modern aesthetic

Get the look you are after with the solution that offers design flexibility. The Hardie® Reveal® Panel system can be utilized to create an effective modern, durable, panelized look.

A system of components specifically developed for multi-family and light commercial construction. If your project calls for a panelized look — the Hardie Reveal Panel system offers the design flexibility you need.

Beginning with a commercial grade panel developed for multi-family and light commercial applications, the Hardie Reveal Panel system is a complete solution for creating a panelized look. Eliminate the guesswork in creating this look with the Hardie Reveal Panel system, with all parts including panels and trims supplied by James Hardie. Check for availability and call us to request a James Hardie Preferred Installer when specifying the Hardie Reveal Panel system.

For details about technical information and specs, visit [JamesHardieCommercial.com](http://JamesHardieCommercial.com)



CASEMENT



FIXED



AWNING

**CLASSIC CASEMENT & AWNING** VINYL

**50** YEAR WARRANTY  
**50** YEAR WARRANTY  
**50** YEAR WARRANTY

**FEATURES**

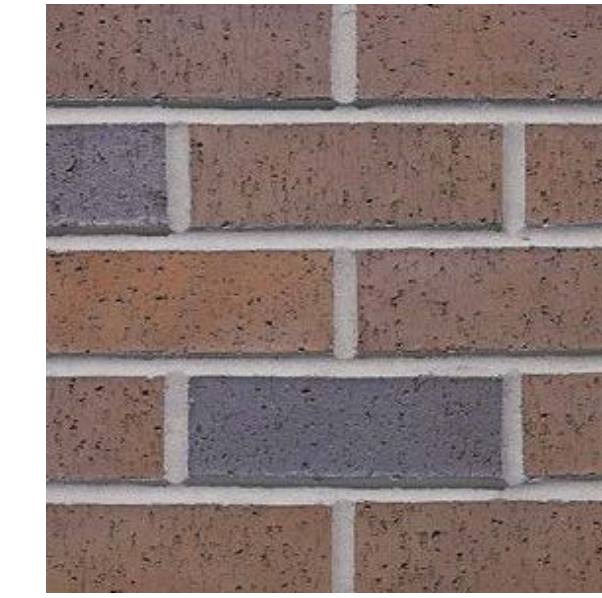
1. Integrated sash fit with weatherstripping for energy efficiency and noise reduction.
2. Interior and exterior accessories optional for easy maintenance applications.
3. Reinforcement-free multi-chamber PVC construction with fusion-welded corners for durability, weather-tight performance and beauty.
4. 14 000 glass systems with energy-efficient SmartEdge™ (standard) or SmartEdge™ (optional) argon gas fill for 10% improvement in U-factor (see page 11 for details).
5. Single handle with auto-latching system to open and seal your window in one operation.
6. Dimensioned sash head and tail bar to fit standard sills.
7. Sash sash gear operable for full view up to 200° and full view gear operable for larger view to ensure smooth operation when opening and closing your window.

Make your view one of a kind with Classic Casement & Awning windows. They feature a weather-resistant condition seal design, easy-to-adjust sashes to ensure smooth, precise operation. The sash comes shut 1/8" to insure weather-tight.

**A** Reinforcement-free multi-chamber PVC construction with fusion-welded corners for durability and weather-tight performance.

**B** Single handle with auto-latching system to open and seal your window in one operation.

**C** Sash sash gear operable for full view up to 200° and full view gear operable for larger view to ensure smooth operation when opening and closing your window.



### BRICK

MAIN BUILDING  
MUTUAL MATERIALS  
FOREST BLEND



### BRICK

TOWNHOMES & ACCENTS  
MUTUAL MATERIALS  
RAVEN



### CONCRETE

MAINBUILDING & TOWNHOMES



### WOOD RAINSCREEN

MAINBUILDING & TOWNHOMES



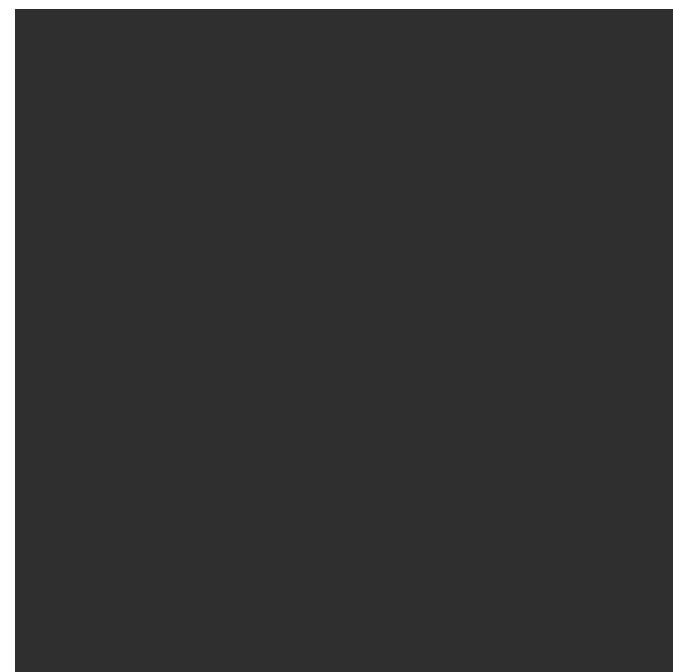
SHERWIN WILLIAMS  
COLOR: SW 6398  
SCONCE GOLD



SHERWIN WILLIAMS  
COLOR: SW 7067  
CITYSCAPE



SHERWIN WILLIAMS  
COLOR: SW 7643  
PUSSYWILLOW



SHERWIN WILLIAMS  
COLOR: SW 6258  
TRICORN BLACK



**T H O M A S**  
architecture studios  
525 COLUMBIA ST SW | OLYMPIA, WA 98501  
360.915.8775 | TASOLYMPIA.COM

EAST BAY LOT A  
**WESTMAN MILL**  
510 STATE AVE OLYMPIA, WA. 98501

Project No: 1514  
CD SET  
01/04/2018

**COLORS & MATERIALS-SIDING**

**A6.11**

All material herein constitutes the original and unpublished work of the architect and may not be used, duplicated, or disclosed without the written consent of the architect. Copyright © 2017 by Thomas Architecture Studio. All rights reserved.



Options [View product details for more options](#) Price Range: \$\$

Group ALL Model 5001

Model 5001

Wood Options Hemlock

Glass Options Clear

**FEATURES**

- **Glass Options:** energy efficient
- **Maintenance Level:** moderate
- **Project Type:** New Construction; Remodel / Replacement
- **Warranty:** limited 5-years
- **Wood Options:** hemlock, meranti mahogany

**Trifab™ 451UT Framing System**



- 2" (50.8mm) sightline
- 4-1/2" (114.3mm) depth
- Ultra thermal performance
- Blast mitigation
- Center glazed



**Product Features**

Trifab 451UT (Ultra Thermal) Framing System provides improved thermal performance to increase energy efficiency by employing a "dual" Isoloc(MC) thermal break.

**Key Features Include:**

- Trifab 451UT is 4-1/2" deep with a 2" sightline
- Center Plane glass application
- Flush glazed from either the inside or outside
- Screw Spline fabrication
- Dual Isoloc™ lanced and debridged thermal break
- Infill options up to 1-1/8" thickness
- Permanodic™ anodized finishes in 7 choices
- Painted finishes in standard and custom choices

**Optional Features:**

- High performance flashing
- Acoustical rating per AAMA 1801 and ASTM E 1425
- Project specific U-factors (See thermal charts in Architectural Detail Manual)

**Product Applications:**

- Storefront, Ribbon Window or Punched Openings
- Single-span
- Integrated entrance framing allowing Kawneer standard entrances or other specialty entrances to be incorporated
- Kawneer windows or GLASSvent™ are easily incorporated

EAST BAY LOT A  
WESTMAN MILL  
510 STATE AVE OLYMPIA, WA. 98501

Project No: 1514  
CD SET  
01/08/2018

**DOORS AND  
STOREFRONTS**

**A6.12**

All material herein constitutes the original and unpublished work of the architect and may not be used, duplicated, or disclosed without the written consent of the architect. Copyright © 2017 by Thomas Architecture Studio. All rights reserved.



