

Post-It™ brand fax transmittal memo 7671

of pages = 3

To	GEORGIA BAXTER	From	CHUCK S.
Co.		Co.	
Dept.		Phone #	
Fax #		Fax #	



ENGINEERING & TECHNICAL SERVICES

4746 - 50TH AVENUE, S.W.

PHONE: (206) 935-8856

SEATTLE, WA 98116-4325

FAX: (206) 932-9520

PROJECT PLAN

PROJECT: CLOSURE OF ARLINGTON FRENCH DRAINS

DATE: 10/6/00

SUBMITTED BY: C.L. Stoddard

Project Description:

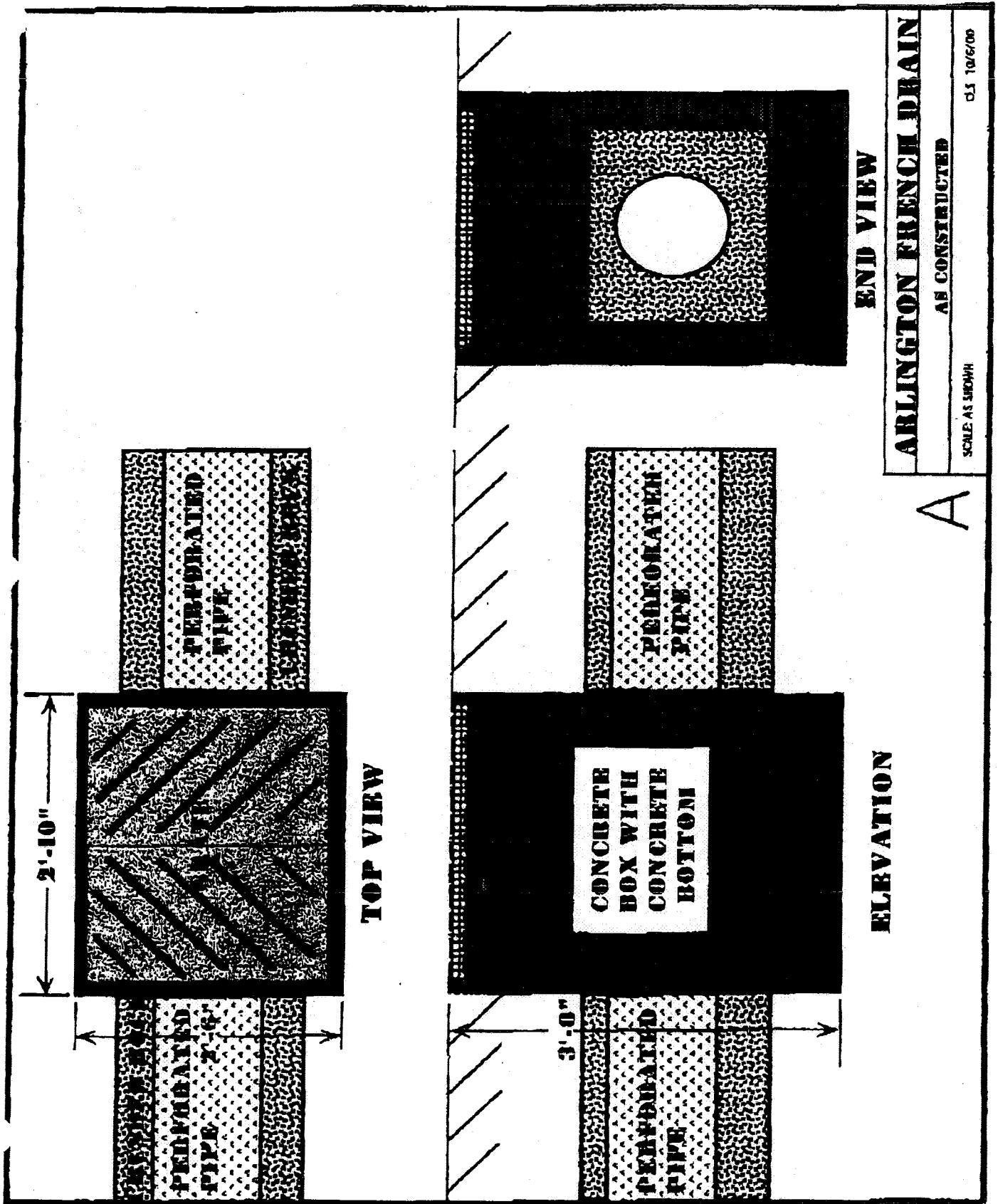
Per the Washington Dept. of Ecology request the Arlington French drains 13, 14, 23, 24, 25 and 26 located in the treated product area will be closed per this plan.

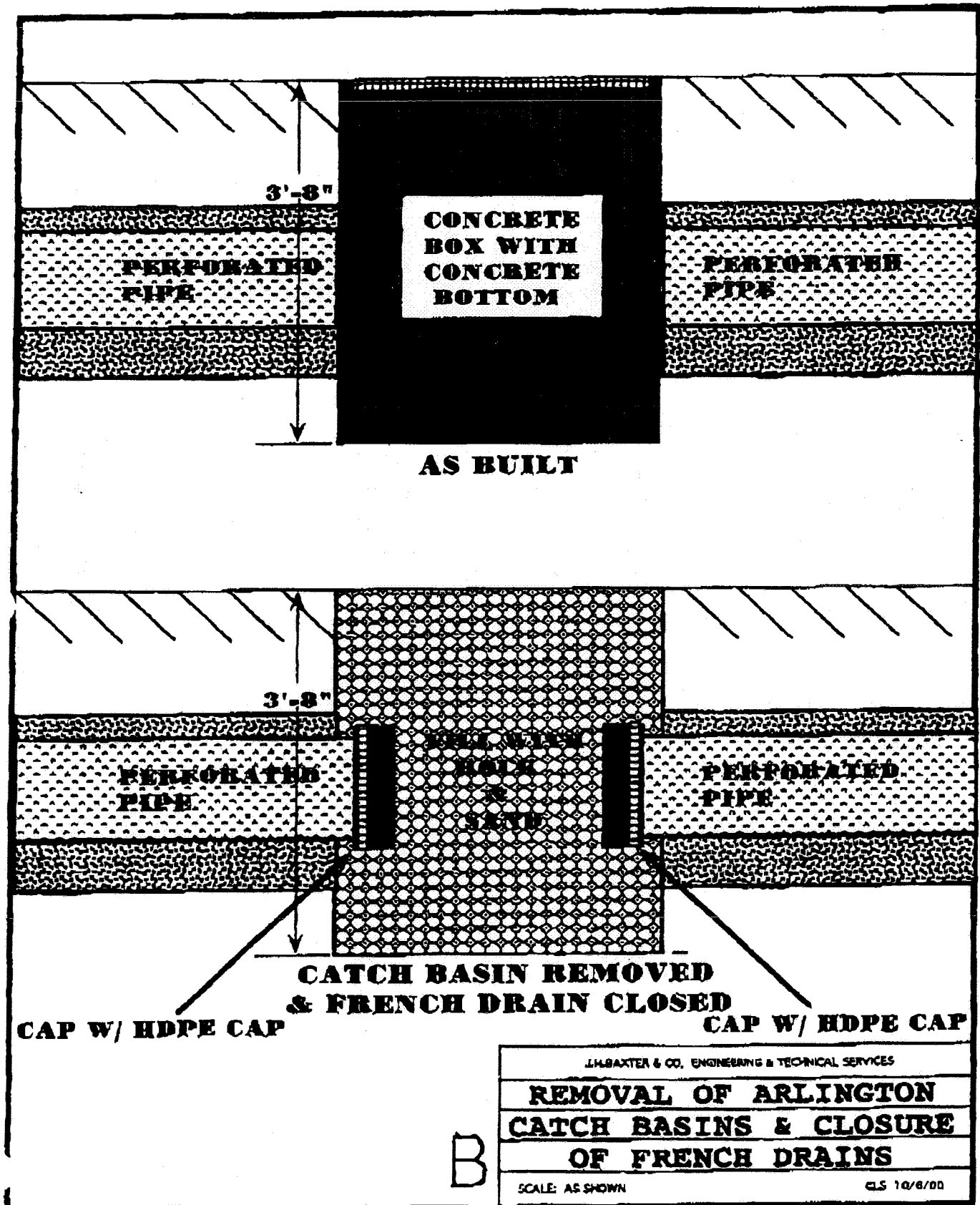
Closure Procedure:

The French drains in question are constructed in accordance with Snohomish County Standard Plan No. 9-050 as shown in drawing A. These French drains will be closed by:

1. Removal of the concrete catch basin boxes.
2. Capping of the French drain perforated pipes with HDPE caps to prevent water movement to the drain fields.
3. Filling the void left by the catch basin removal with large crushed rock for stability and sand for retardation of water infiltration.

The final closure is illustrated in drawing B. In addition, grading away from the closed French drains will occur to prevent rainwater ponding.







28-E-1.1

June 6, 2000

Ms. Mary Shaleen-Hansen
State UIC Coordinator
Department of Ecology
P.O. Box 47600
Olympia, Washington 98504-7600

**RE: Underground Injection Well Program
J.H. Baxter & Co. Arlington, Washington
UIC Program Site ID #11941**

Dear Ms. Shaleen-Hansen:

In compliance with the Department of Ecology (Ecology) Order No. DE 00WQNR-850, J.H. Baxter has permanently closed the drains in the treated wood area. The closure of drains 13, 14, 23, 24, 25 and 26 were completed on May 10, 2000.

The drains were closed in accordance with the closure plan that was submitted to Ecology on March 1, 2000. A brief description of the closure method for each drain is provided below and pictures taken during the closure project are included as an attachment.

13 & 14 05/10/2000

The pipe connecting the two basins together remained in place, but the actual boxes were both removed. The submersible pump located in catch basin #14 will stay in place for use in emergency situations. The 4" PVC line connecting catch basin #14 to the drainage ditch to the north also remains in place.

<u>Drain ID</u>	<u>Date of Closure</u>	<u>Description of Closure</u>
23	05/02/2000	The lateral drainpipe was disconnected from the box and the box was pulled out. The drainpipes were then capped off. The void hole was then filled with rock.
24	05/02/2000	The lateral drainpipe was disconnected from the box and the box was pulled out. The drainpipes were then capped off. The void hole was then filled with rock.
25	04/26/2000	The lateral drainpipe was disconnected from the box and the box was pulled out. The drainpipes were then capped off. The void hole was then filled with rock.
26	04/26/2000	The lateral drainpipe was disconnected from the box and the box was pulled out. The drainpipes were then capped off. The void hole was then filled with rock.

Therefore, since these drains have been permanently closed, J.H. Baxter would like to request that these drains be removed or delisted from the UTC program under Washington Administrative Code 173-218.

Should you have any questions regarding this submittal or require additional information, please contact me at (650) 349-0201.

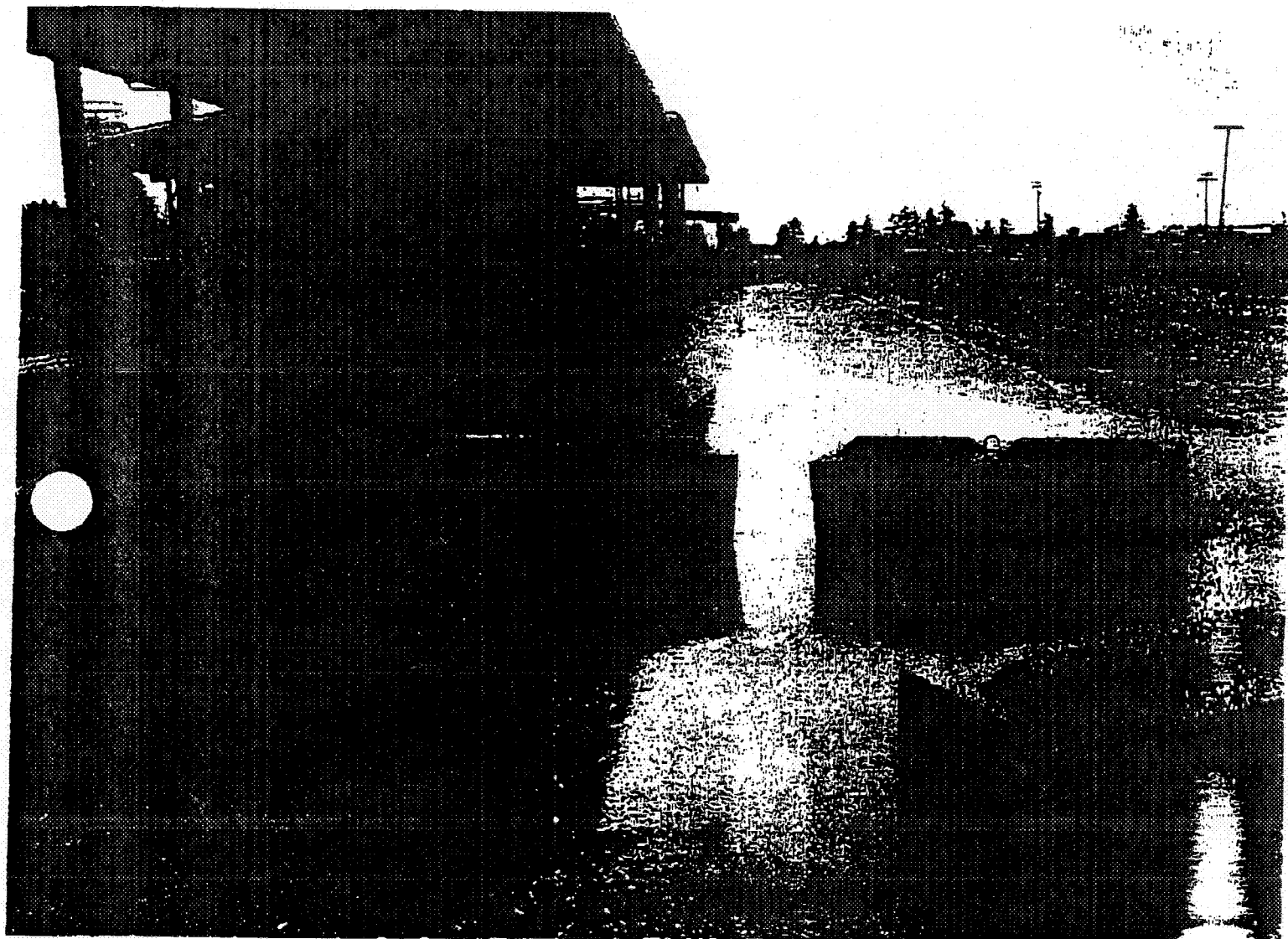
Sincerely,



Jill C. Reed
Environmental & Safety
Manager

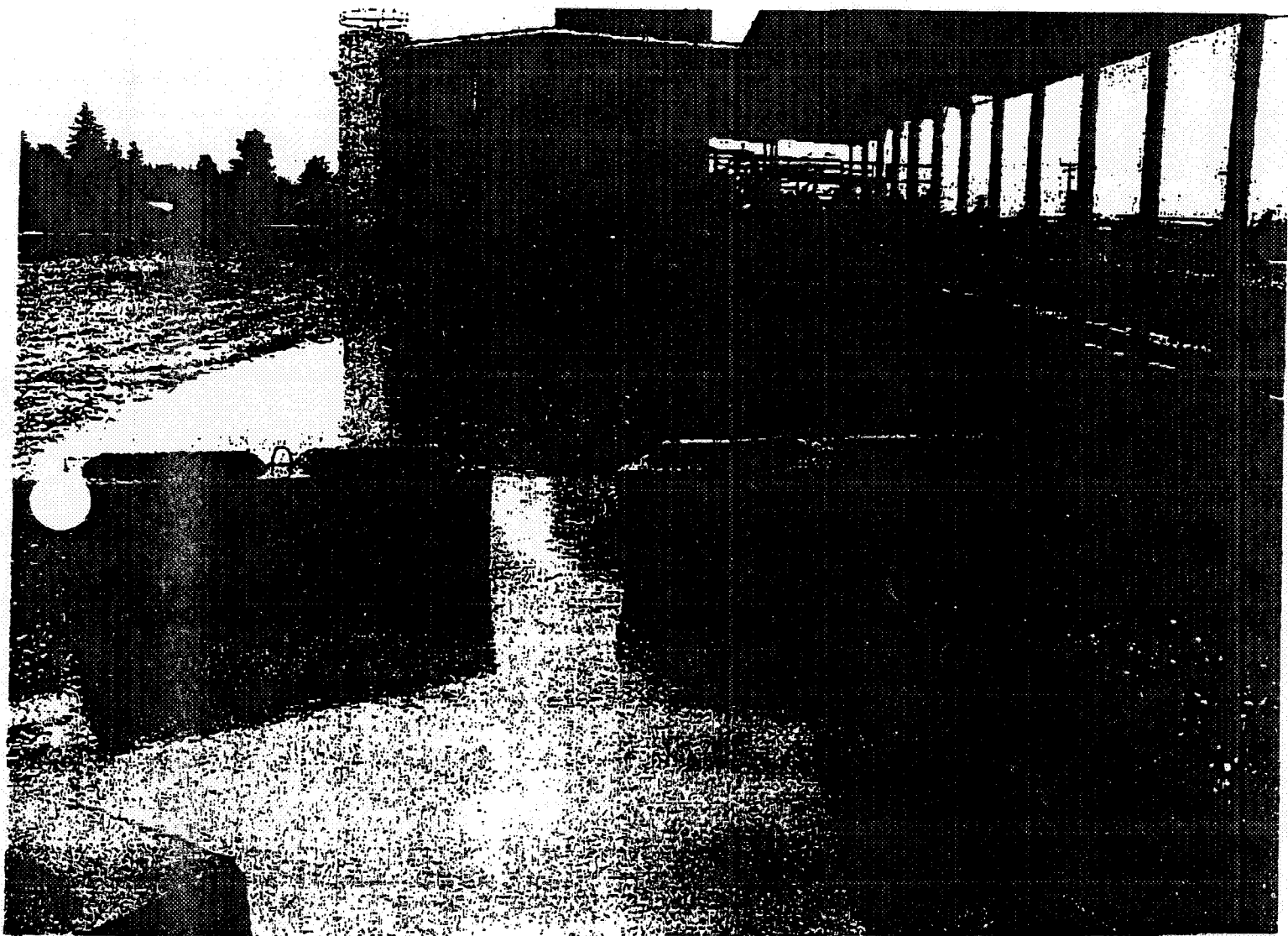
Attachments

cc: G. Baxter
T. Ortmeyer

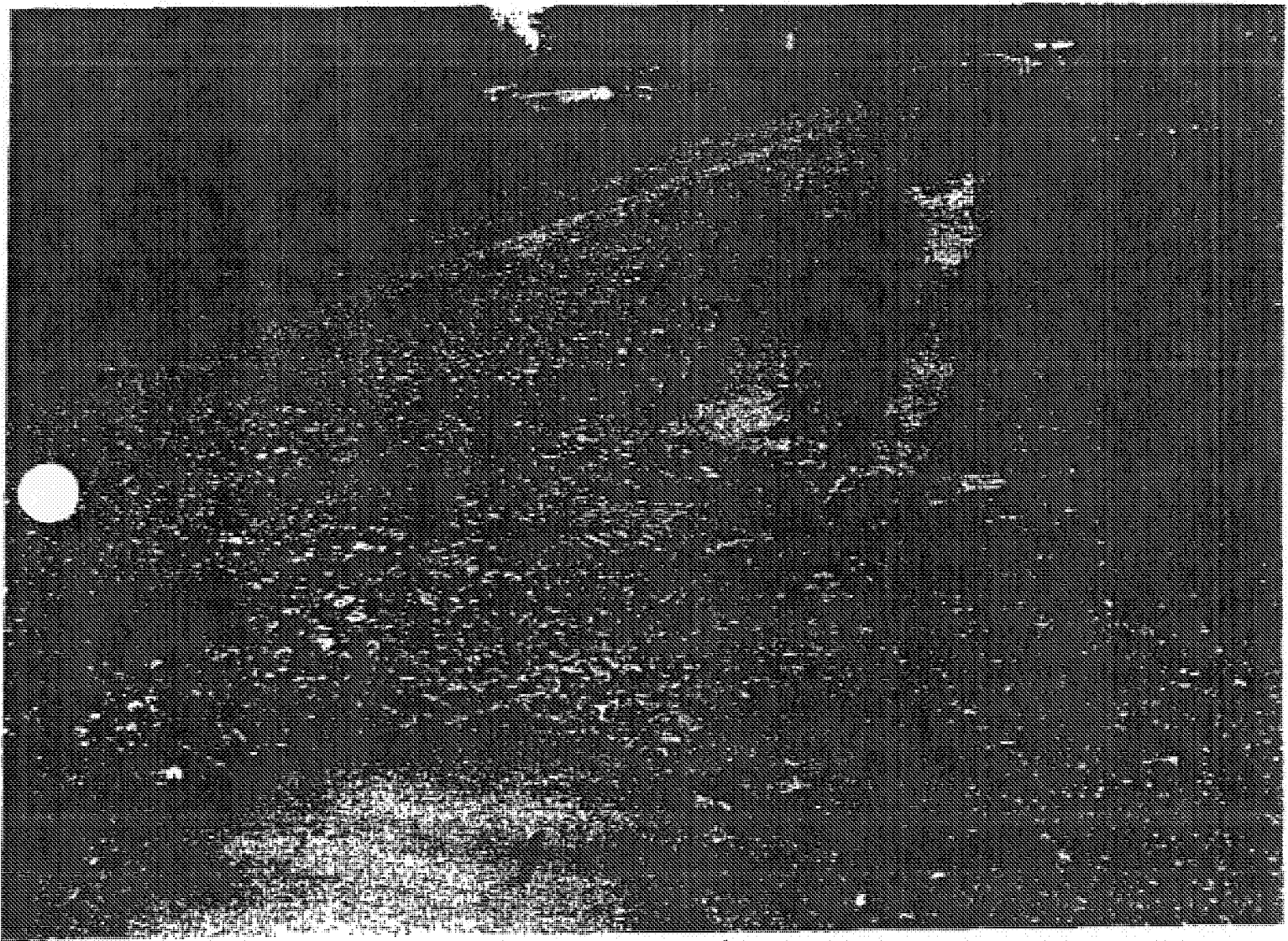


Closed with barriers

P6190002.JPG



Closed with barriers



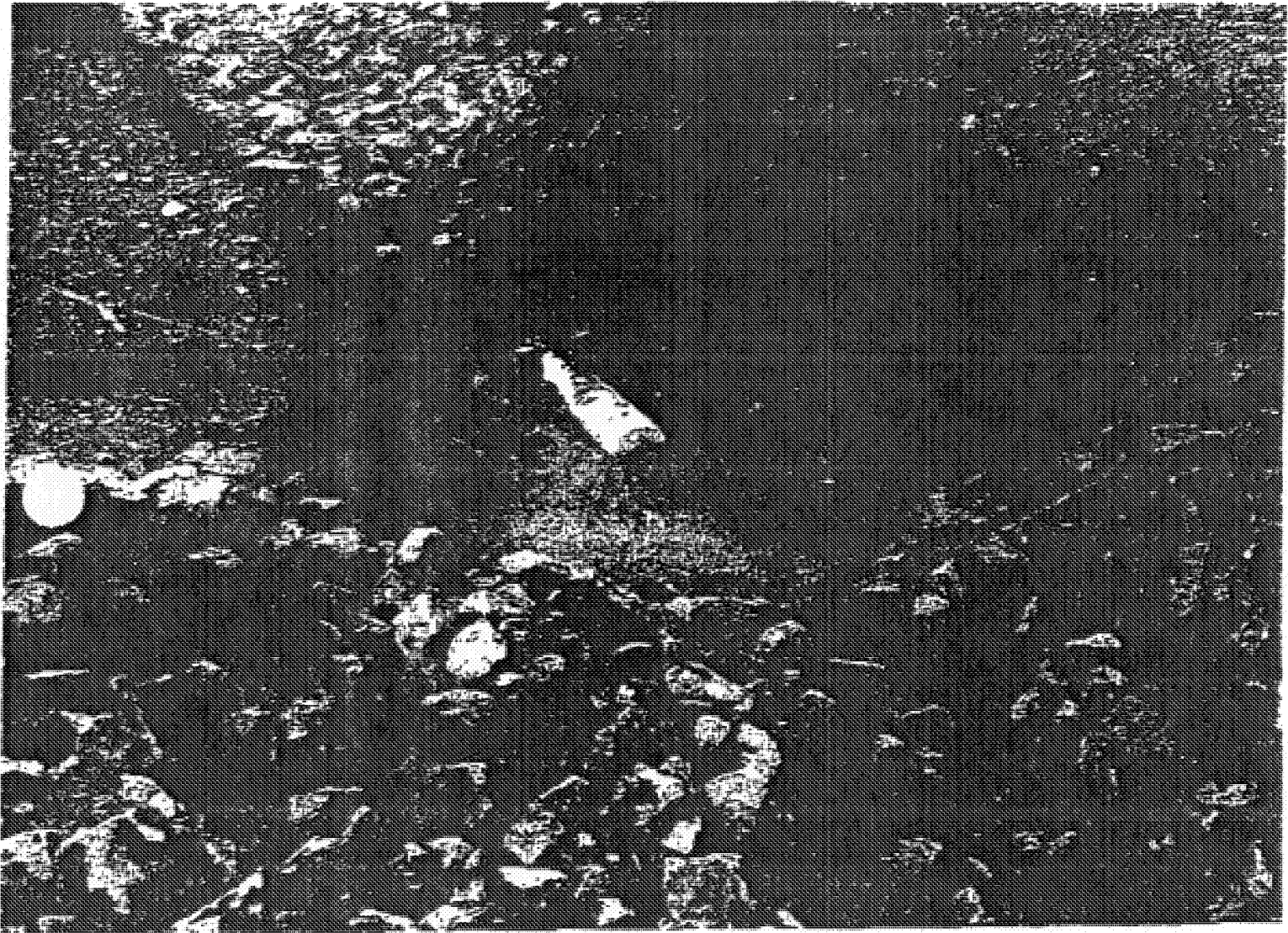
Prior to closure

P4240001

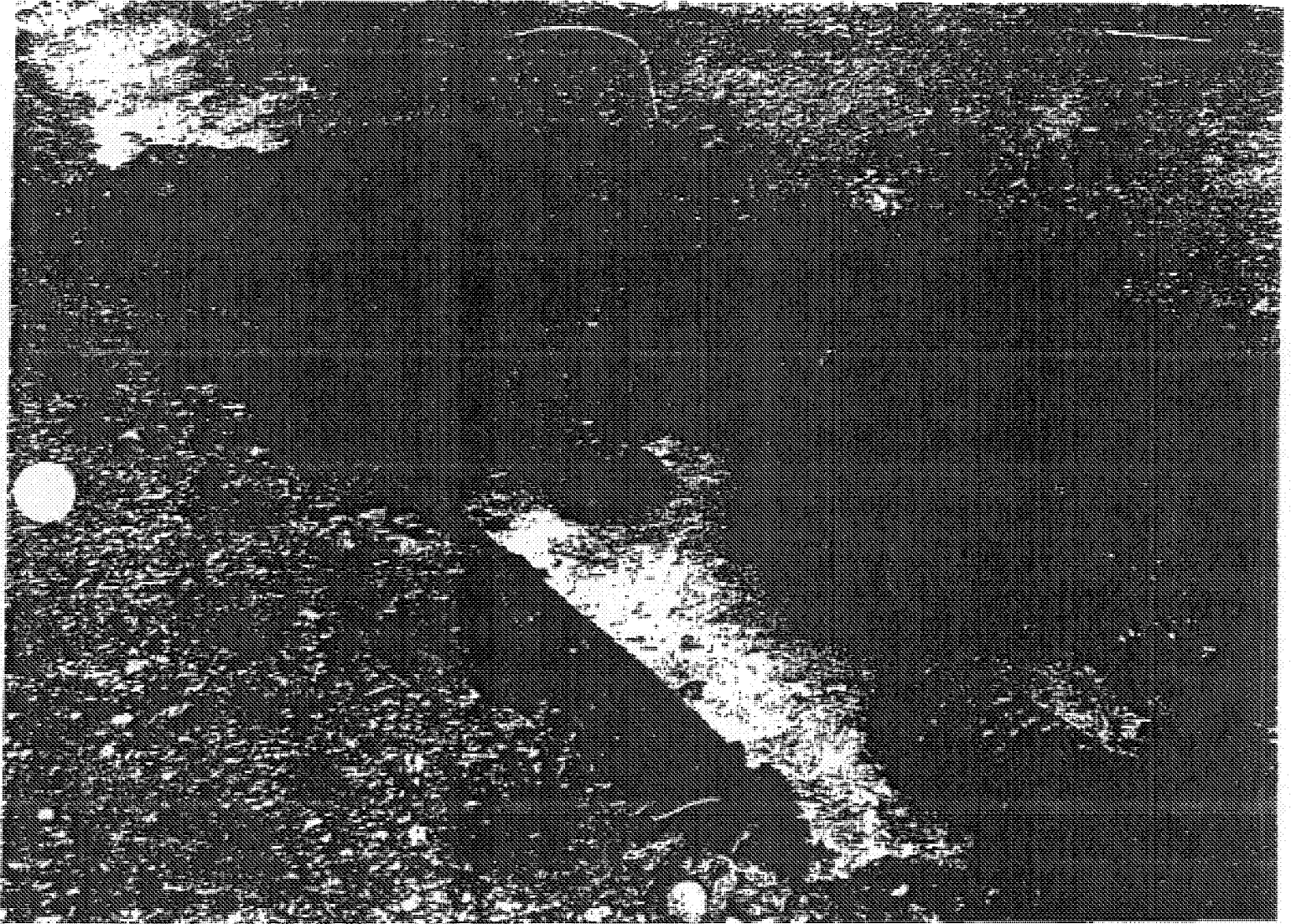


Removing Gate

4240003

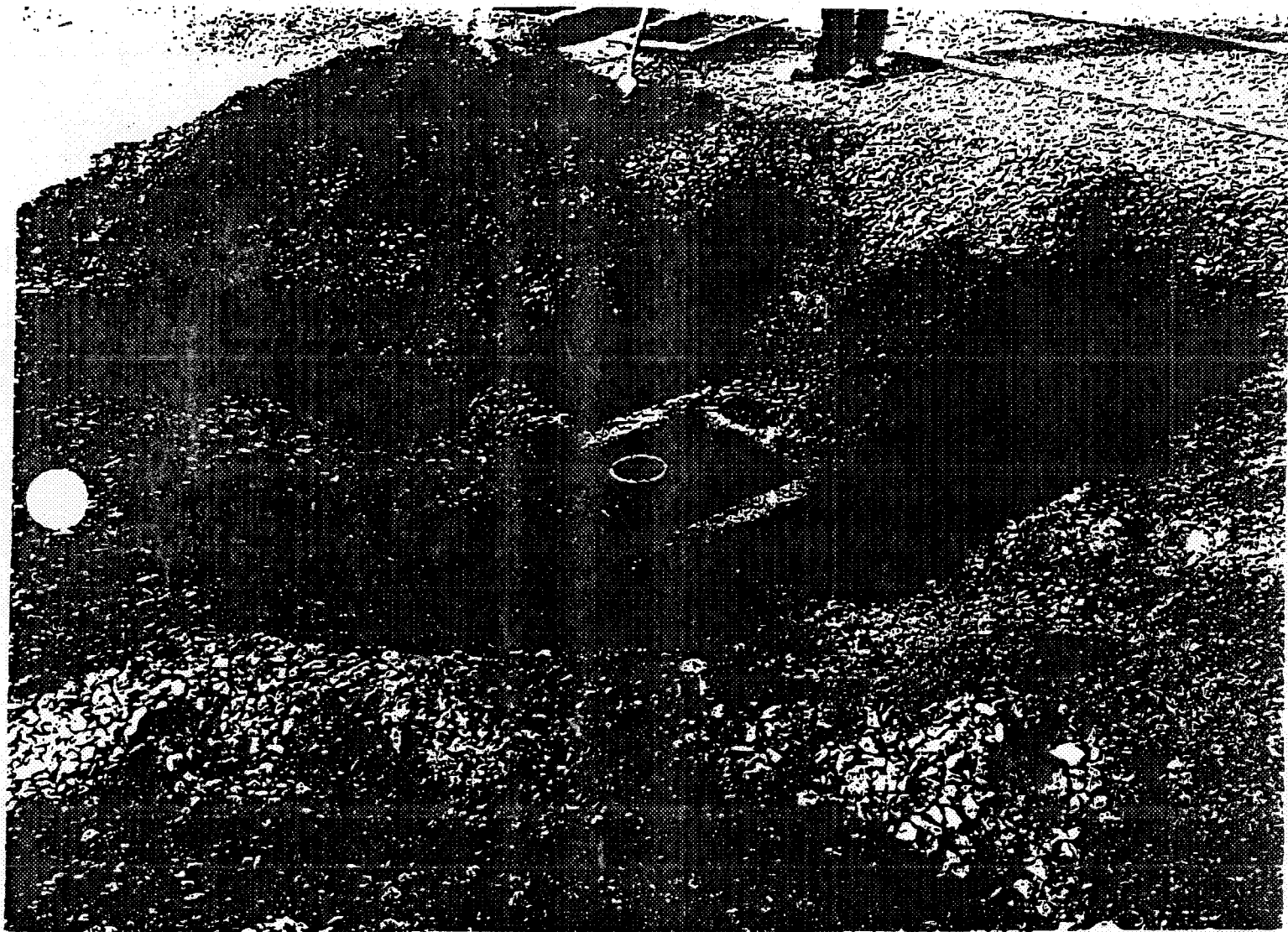


Box removed , Pipe capped

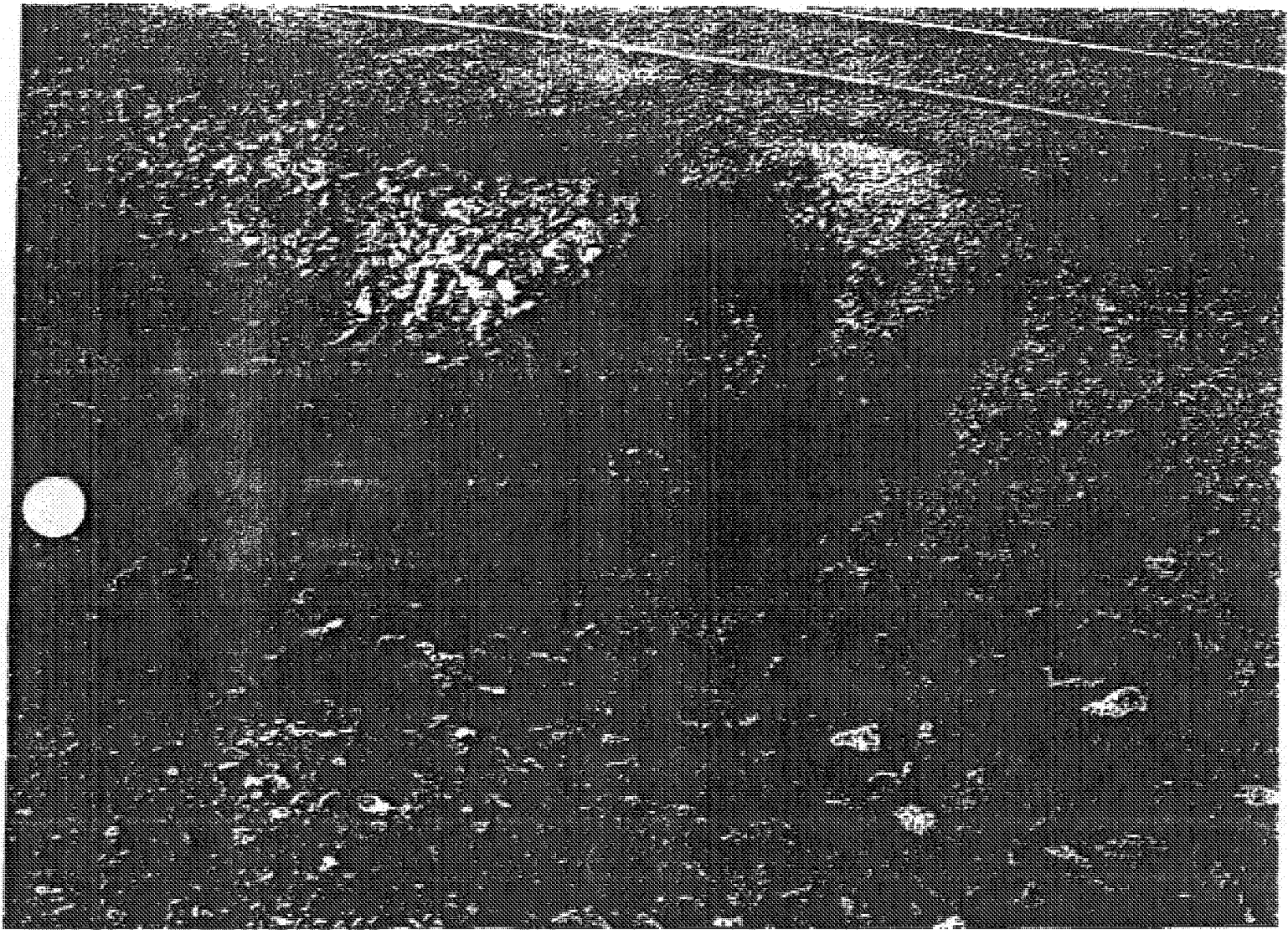


Box removed , Pipe capped

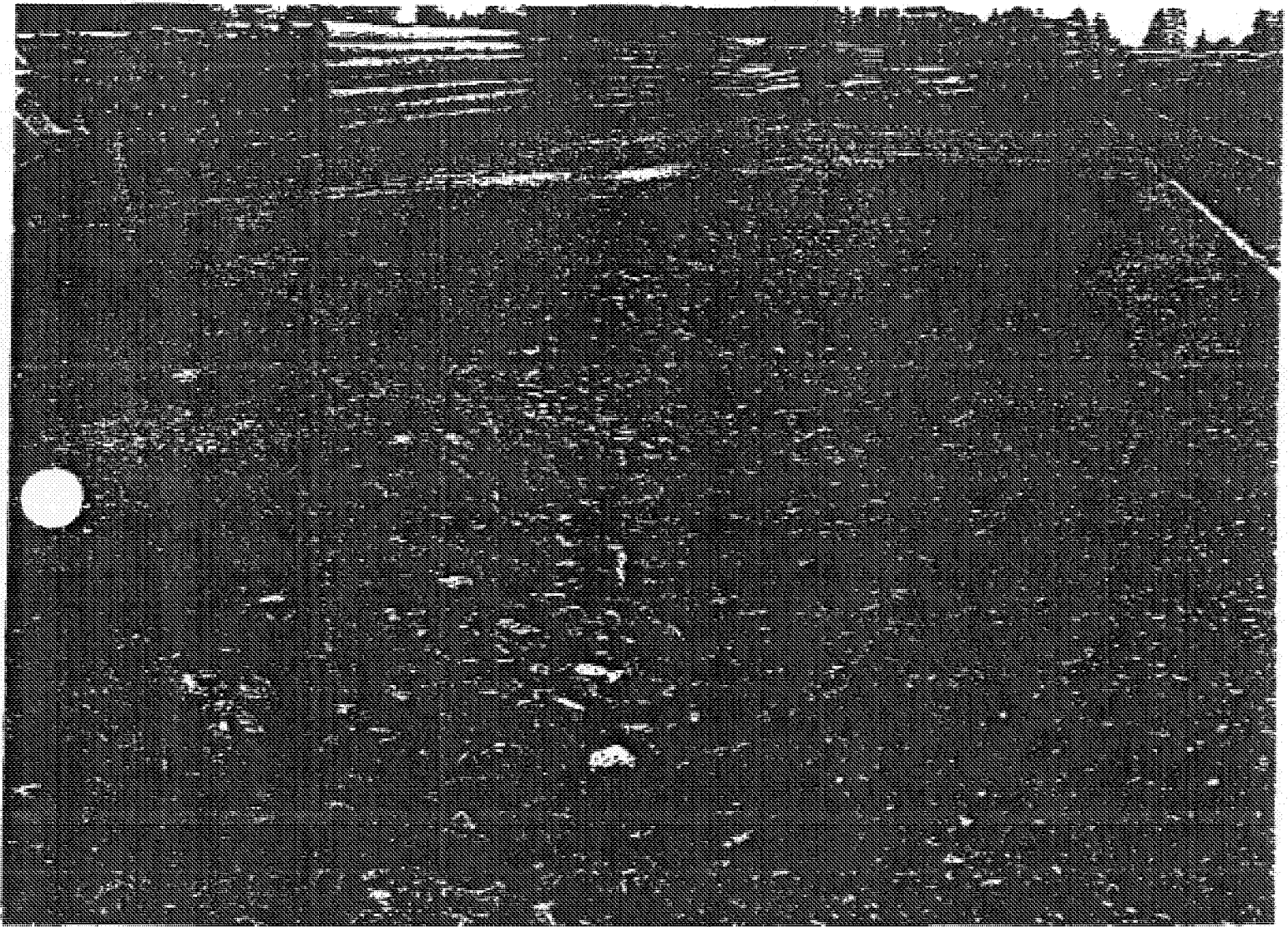
4250011



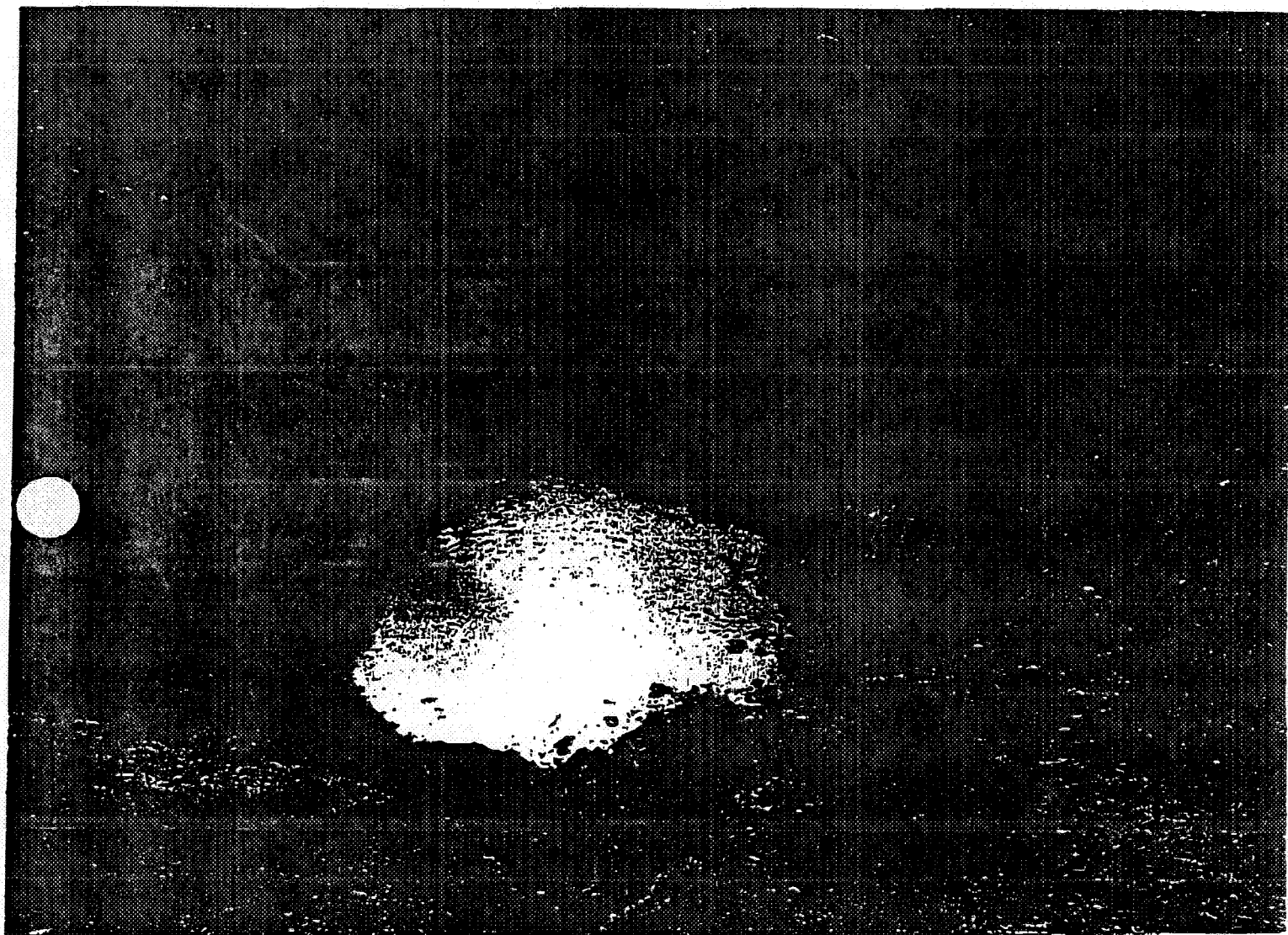
Excavating to remove box



Box removed , Pipe capped



Closed and filled with rock



Box removed , Pipe capped

4250012



Closed and filled with rock

4260015