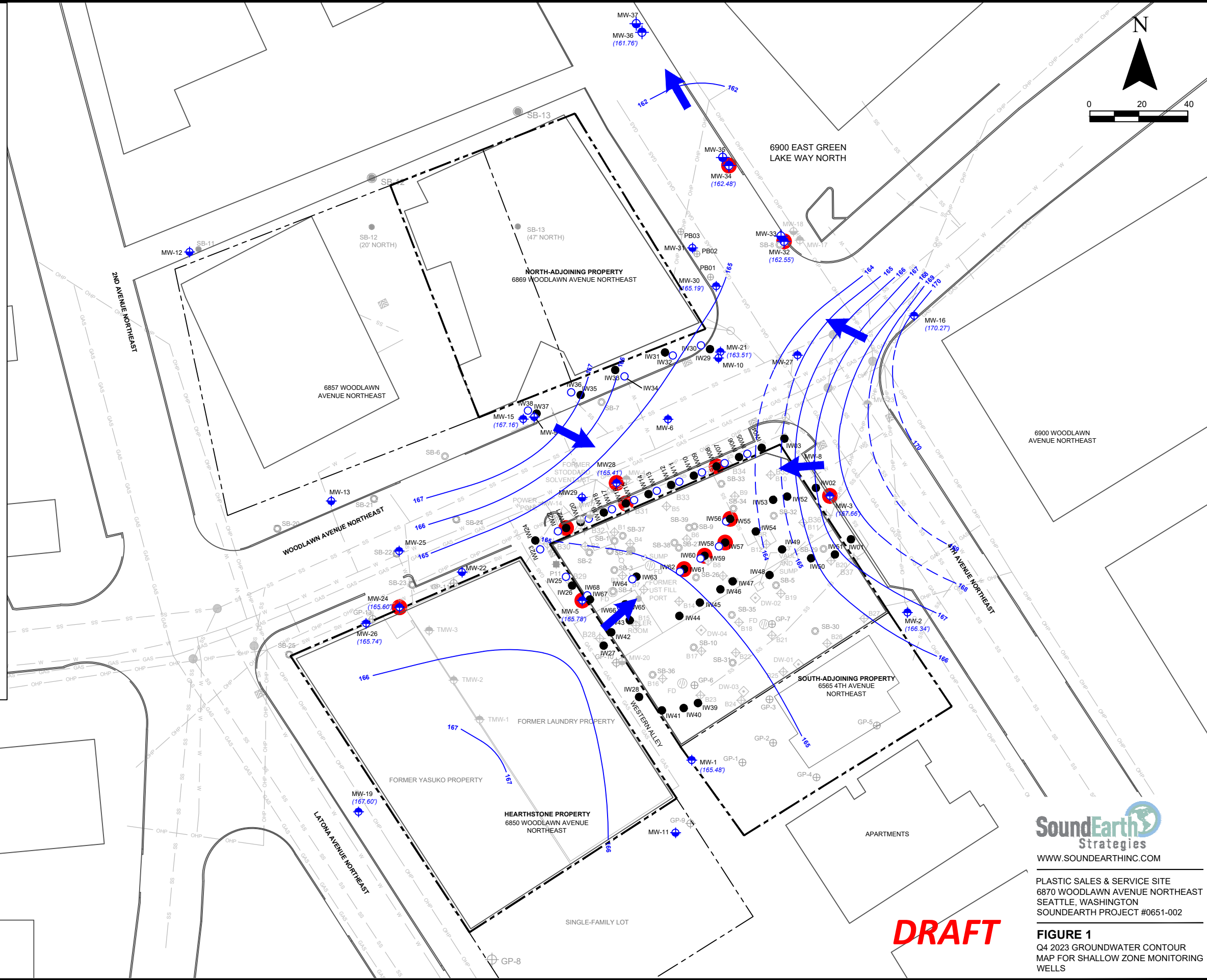


**LEGEND**

- CATCH BASIN
- MANHOLE
- SHALLOW-ZONE MONITORING WELL
- DEEP-ZONE MONITORING WELL
- DEEP DEWATERING WELL
- SHALLOW INJECTION WELL
- DEEP INJECTION WELL
- APPROXIMATE DIRECTION OF GROUNDWATER FLOW (SHALLOW ZONE)
- SHALLOW ZONE POTENTIOMETRIC SURFACE CONTOUR (OCTOBER 23, 2023)
- DASHED WHERE INFERRED
- GROUNDWATER ELEVATION (165.71')
- DECOMMISSIONED WELL
- DIRECT-PUSH BORING (GEOENGINEERS 2004)
- DIRECT-PUSH BORING (GEOENGINEERS 2002/2003)
- DIRECT-PUSH BORING (FARALLON 2004)
- DIRECT-PUSH BORING (FARALLON 2006/2007)
- DIRECT-PUSH BORING (FARALLON 2010)
- DIRECT-PUSH BORING (SOUNDEARTH 2008)
- HOLLOW-STEM AUGER (SOUNDEARTH 2009)
- POST-ELECTRICAL RESISTANCE HEATING BORING LOCATION
- STORMWATER LINE
- GAS LINE
- SANITARY SEWER LINE
- WATER LINE
- OVERHEAD POWER LINE
- PROPERTY BOUNDARY LINE
- PARCEL BOUNDARY
- DENOTES CVOC CONCENTRATION IN GROUNDWATER THAT EXCEEDS MTCA METHOD A OR B CLEANUP LEVEL
- FLOOR DRAIN
- UNDERGROUND STORAGE TANK

**NOTES:**

1. FIGURE DERIVED FROM BASEMAP BY FARALLON CONSULTING, 2010.



**SoundEarth**  
Strategies  
WWW.SOUNDEARTHINC.COM

PLASTIC SALES & SERVICE SITE  
6870 WOODLAWN AVENUE NORTHEAST  
SEATTLE, WASHINGTON  
SOUNDEARTH PROJECT #0651-002

**DRAFT**

**FIGURE 1**  
Q4 2023 GROUNDWATER CONTOUR  
MAP FOR SHALLOW ZONE MONITORING  
WELLS