

Maury Island Open Space Cleanup Update

Friends of Maury Parks Meeting

January 25, 2024



Meet Your Presenters



Ryan Gardiner
Site Manager

Ian Fawley
Senior Outreach Planner



Lindsey Miller
Capital Projects Facilities and
Asset Management Supervisor



Cleanup Update Presentation Outline

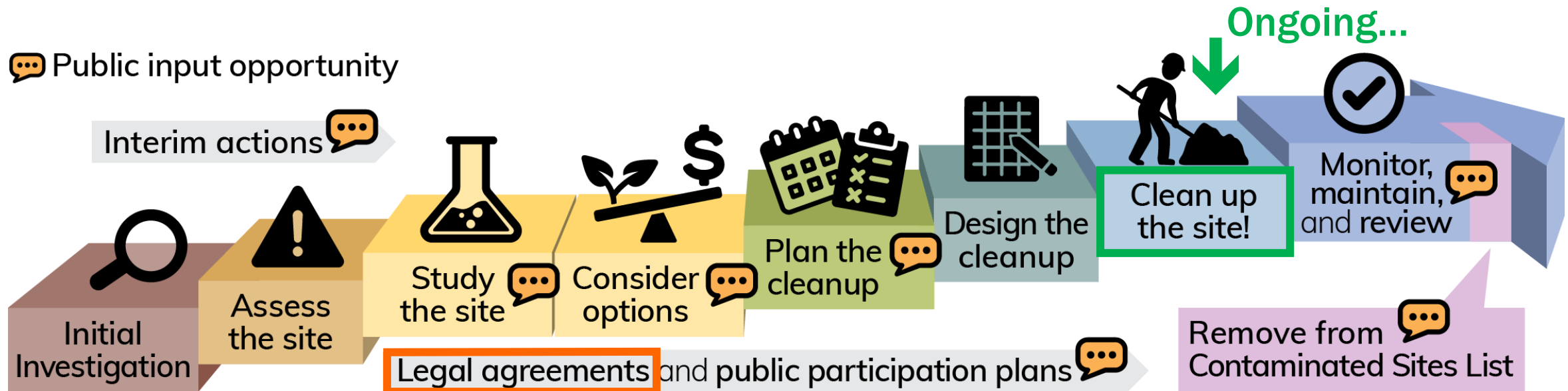


- Welcome and Introductions
- Cleanup Process & Current Status
- Legal Agreement Amendments
- Site Background
- Cleanup Action Plan & Phases
- Next steps
- How to Comment
- Questions/Answers

The Model Toxics Control Act (MTCA)

Washington's Formal Cleanup Process

and where we are now...
and where we will be in 2024...



↑ Available for review and comment: Feb 26 – Mar 26

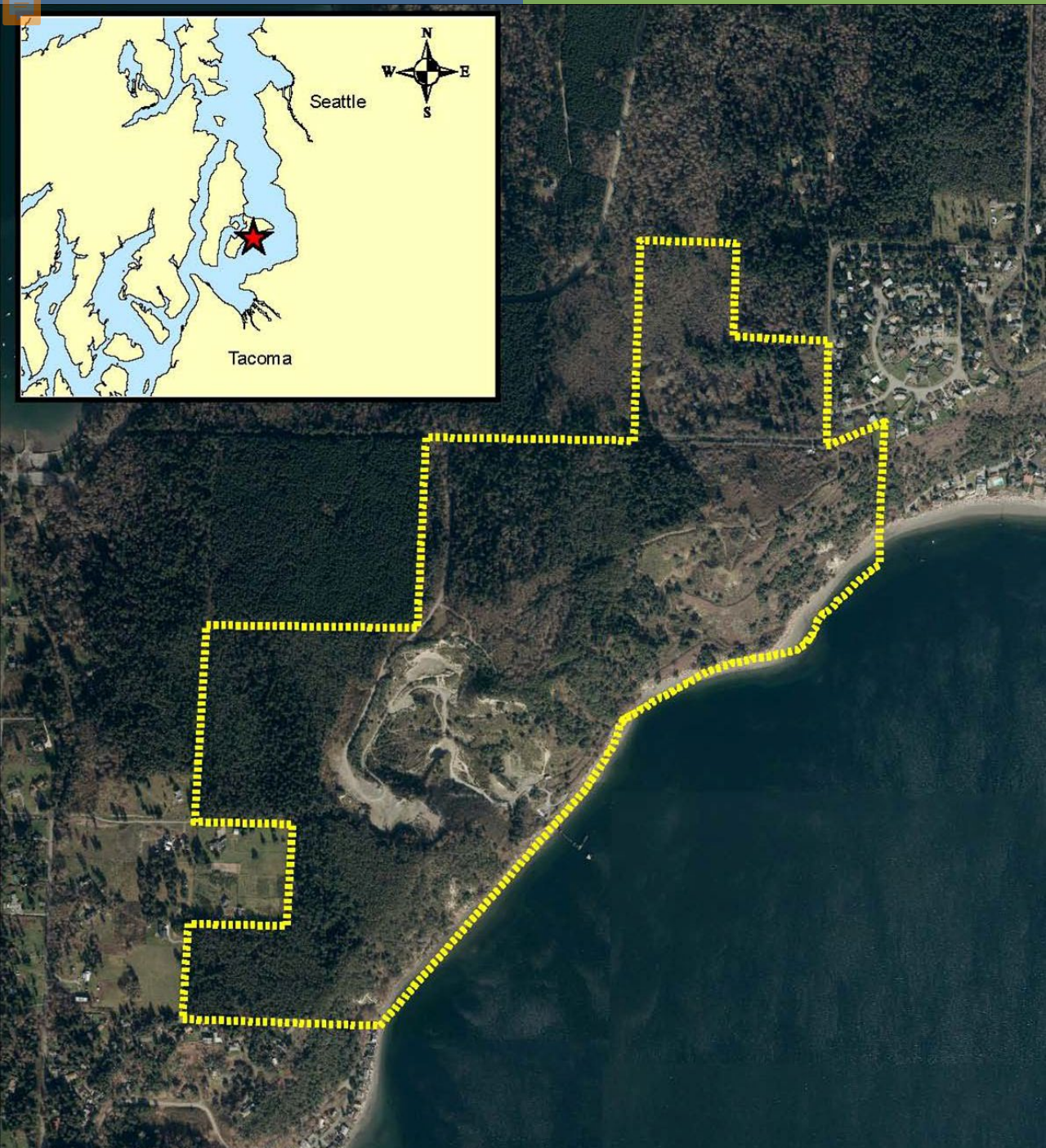
Public Participation

Public review and comment: Feb 26 – Mar 26, 2024.



The *procedural* amendments to the legal agreement include:

- The final 2019 Cleanup Action Plan and an updated schedule of deliverables to complete the remaining phases.
- An Environmental covenant to restrict land uses on the site such as maintaining the capped roads and trails and not disturbing contaminated soil without Ecology permission.
- Updated legal language to comply with updated applicable laws.



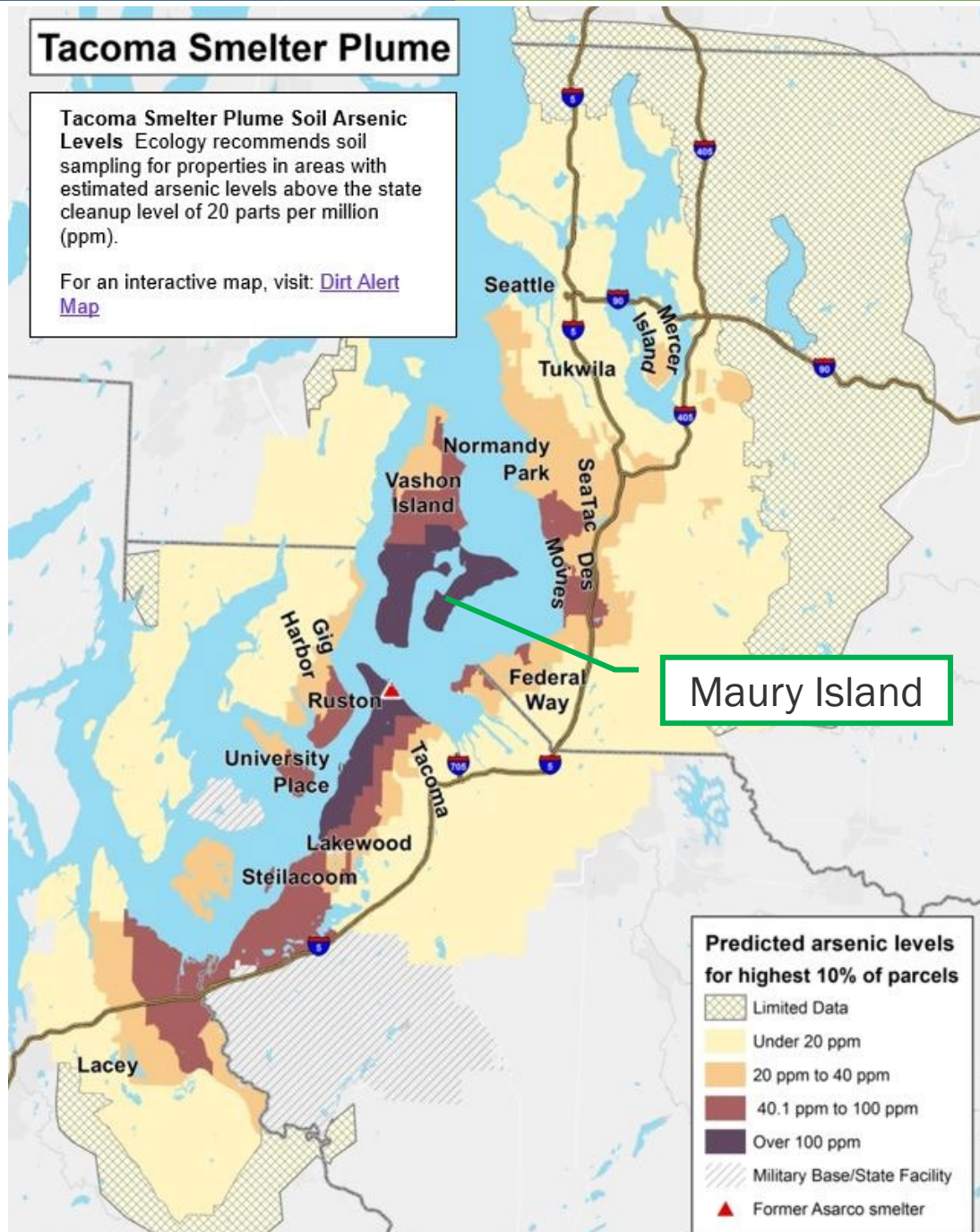
Site Background

- Approx. 266 acres
- Portion of site was formally operated as a sand and gravel mine
- Longest undeveloped Puget Sound shoreline in King County
- County acquired site in 2010
- Currently open to the public

Tacoma Smelter Plume

Tacoma Smelter Plume Soil Arsenic Levels Ecology recommends soil sampling for properties in areas with estimated arsenic levels above the state cleanup level of 20 parts per million (ppm).

For an interactive map, visit: [Dirt Alert Map](#)



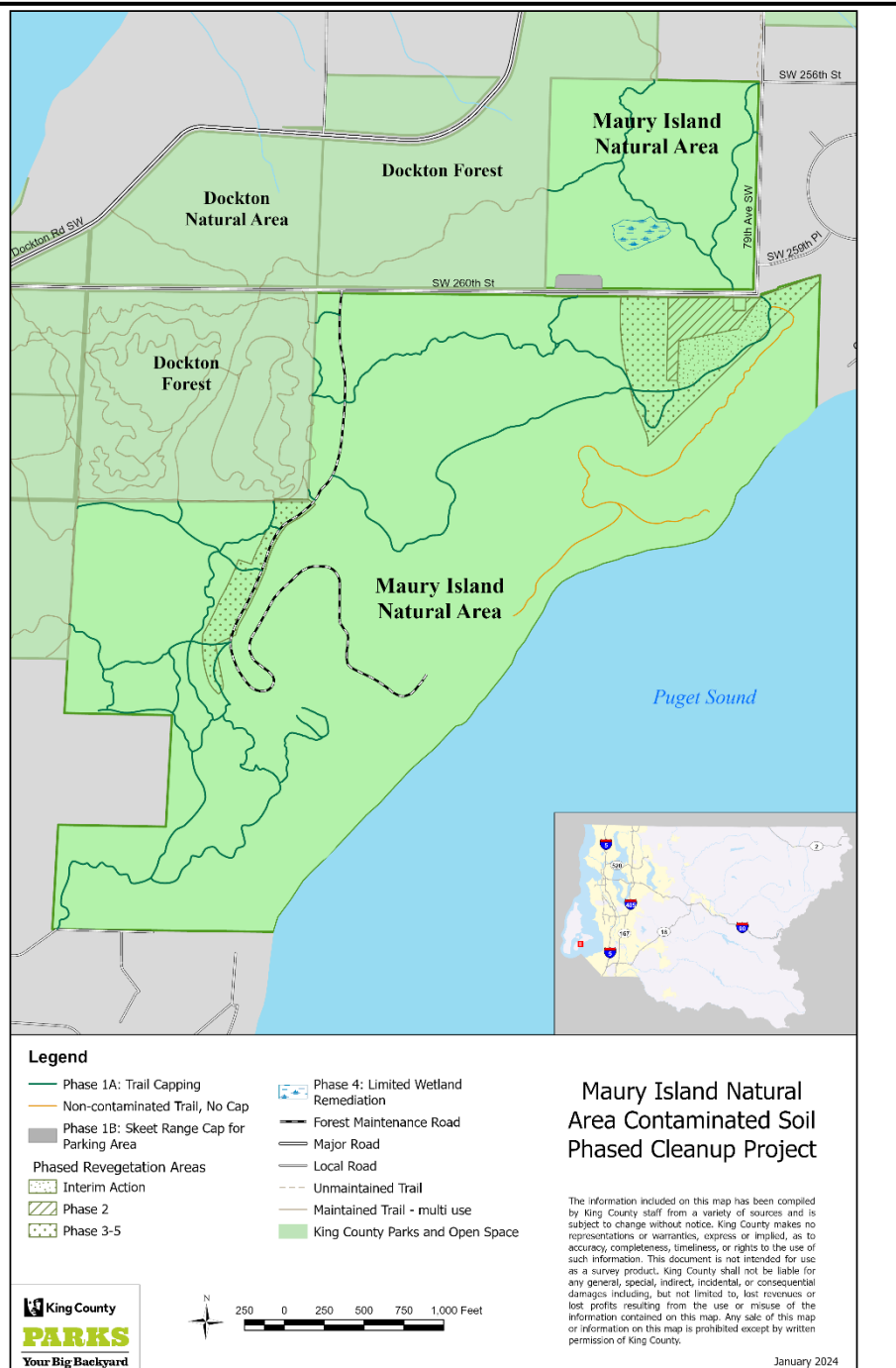
Site Background Continued...

Soil Contamination from former Tacoma Smelter Plume and shooting activities:

- Arsenic
- Lead
- Polycyclic aromatic hydrocarbons (PAHs)

Cleanup Action Plan

- Revegetate several areas
- Cap maintenance roads and majority of trails
- Decommission some trails and redundant trail spurs
- Complete limited wetland remediation near gravel parking lot.



Cleanup Phases

1

- **July 2019:** Capped all trails
- **October 2020:** Cleaned up skeet range and removed invasive vegetation in Acres 4-6

2

- **March 2022:** Planted Acres 4-6

3

- **December 2024:** Clear and plant Acres 7-10

4

- **December 2026:** Clear and plant Acres 11-13 and complete wetland remediation

5

- **December 2029:** Clear and plant Acres 14-16



Next Steps



- **Spring:** Address comments and finalize legal agreement
- **Fall → End of 2024:** Phase 3 clearing and planting

- King County finishes Phases 4 & 5 of Cleanup Action Plan

- Cleanup Complete!
- Ongoing monitoring begins...



How to Comment

Feb 26 –
Mar 26, 2024



Comment Online

<https://www.bit.ly/Ecology-MauryIsland-Comments-2024>



Contact Site Manager

Ryan Gardiner – Site Manager
PO Box 330316
Shoreline, WA 98133-9716
Ryan.Gardiner@ecy.wa.gov



Thank you

Ryan.Gardiner@ecy.wa.gov

425-681-5543

Ian.Fawley@ecy.wa.gov

425-324-5901



Reminder:

A digital PDF of this presentation will be available on Ecology's webpage:

<https://www.bit.ly/Ecology-MauryIsland>