



Public Participation Plan

**Maury Island Open Space Cleanup Site
8215 SW 260th St
Vashon, WA**

Toxics Cleanup Program

Washington State Department of Ecology

Northwest Region Office

Shoreline, Washington

Updated February 2024

Publication Information

This document is available on the Department of Ecology's website at:

<https://apps.ecology.wa.gov/cleanupsearch/site/1532>

Cover photo credit

- View from Maury Island Open Space looking southeast (2017)

Related Information

- Cleanup site ID: 1532
- Facility site ID: 2901216

Contact Information

Toxics Cleanup Program

Northwest Region Office

Ian Fawley

Outreach Planner

(425) 324-5901, Ian.Fawley@ecy.wa.gov

Ryan Gardiner

Site Manager

(425) 681-5543, Ryan.Gardiner@ecy.wa.gov

15700 Dayton Ave N.

Shoreline, WA 98133

Phone: (206) 594-0000

Website¹: [Washington State Department of Ecology](http://www.ecology.wa.gov)

ADA Accessibility

The Department of Ecology is committed to providing people with disabilities access to information and services by meeting or exceeding the requirements of the Americans with Disabilities Act (ADA), Section 504 and 508 of the Rehabilitation Act, and Washington State Policy #188. To request an ADA accommodation, contact Ecology by phone at 360-407-6831 or email at ecyadacoordinator@ecy.wa.gov. For Washington Relay Service or TTY call 711 or 877-833-6341. Visit Ecology's website for more information.

¹ www.ecology.wa.gov/contact

Department of Ecology's Region Offices

Map of Counties Served



Southwest Region 360-407-6300	Northwest Region 206-594-0000	Central Region 509-575-2490	Eastern Region 509-329-3400
---	---	---------------------------------------	---------------------------------------

Region	Counties served	Mailing Address	Phone
Southwest	Clallam, Clark, Cowlitz, Grays Harbor, Jefferson, Mason, Lewis, Pacific, Pierce, Skamania, Thurston, Wahkiakum	PO Box 47775 Olympia, WA 98504	360-407-6300
Northwest	Island, King, Kitsap, San Juan, Skagit, Snohomish, Whatcom	PO Box 330316 Shoreline, WA 98133	206-594-0000
Central	Benton, Chelan, Douglas, Kittitas, Klickitat, Okanogan, Yakima	1250 W Alder St Union Gap, WA 98903	509-575-2490
Eastern	Adams, Asotin, Columbia, Ferry, Franklin, Garfield, Grant, Lincoln, Pend Oreille, Spokane, Stevens, Walla Walla, Whitman	4601 N Monroe Spokane, WA 99205	509-329-3400
Headquarters	Across Washington	PO Box 46700 Olympia, WA 98504	360-407-6000

Public Participation Plan

**Maury Island Open Space Cleanup Site
8215 SW 260th St, Vashon, WA**

Toxics Cleanup Program
Washington State Department of Ecology
Northwest Region Office
Shoreline, WA

Updated February 2024



DEPARTMENT OF
ECOLOGY
State of Washington

Table of Contents

- List of Figures..... 5**
 - Figures..... 5
- Public Involvement in Contamination Cleanup 6**
 - Site contacts..... 6
 - Public Participation Grants 6
- Washington’s Cleanup Laws 7**
 - Model Toxics Control Act..... 7
 - State Environmental Policy Act..... 7
- Site Information..... 9**
 - Site background 9
 - Contamination 9
 - Cleanup plans..... 10
 - Cleanup phases 10
 - Area community 12
 - Environmental Justice..... 12
- Public Participation Activities 16**
 - How we share information with the community..... 16
 - How to share information with us 18
 - Americans with Disabilities Act..... 19
- Plan Amendments..... 19**
- Appendices 20**
 - Appendix A. EPA EJScreen Community Report 20

List of Figures

Figures

Figure 1: Steps in Washington's Cleanup Process	8
Figure 2: Aerial map of site	9
Figure 3: Map of Tacoma Smelter Plume	9
Figure 4: Maury Island Open Space Cleanup Action Plan	11
Figure 5: Map showing location of Maury Island	12
Figure 6: Washington Environmental Health Disparities Map for Maury Island Open Space site	14
Figure 7: EPA EJScreen generated map of the outreach impact area for the Maury Island Open Space site	15

Public Involvement in Contamination Cleanup

The Washington State Department of Ecology (Ecology) developed this public participation plan (plan) in cooperation with King County, the party responsible for the cleanup of the Maury Island Open Space Site (site). The site is now referred to as the Maury Island Natural Area by King County. The purpose of the plan is to promote meaningful community involvement during cleanup.

The plan describes ways Ecology will inform the public about contamination investigations and cleanup options throughout the cleanup process of the site. Ecology encourages the public to learn about and get involved in decision-making opportunities. This plan identifies how and when the public can get involved during different stages of the investigation and cleanup of contamination.

Site contacts

To be included in the site record, comments about the cleanup process must be submitted during comment periods. Questions and informal comments or information about the site's history are welcome anytime.

Toxics Cleanup Program

Northwest Region Office
15700 Dayton Ave N
Shoreline, WA 98133

Ryan Gardiner, Site Manager
Ryan.Gardiner@ecy.wa.gov
(425) 681-5543

Ian Fawley, Outreach Planner
Ian.Fawley@ecy.wa.gov
(425) 324-5901

Potentially Liable Persons

King County
Department of Natural Resources and Parks
King Street Center, Suite 5703
201 South Jackson St., Seattle WA 98104

Lindsey Miller, Capital Projects Facilities and
Asset Management Supervisor
Lindsey.Miller@kingcounty.gov
(206) 477-3549

Public Participation Grants

Grants may be available to neighborhood committees, non-profits, and other groups interested in the site. For contaminated sites, these funds can be used to:

- Hire an expert to help interpret technical information²
- Conduct activities that enhance the public's understanding of, and participation in, the cleanup process

For more information about public participation grants, please contact Laura Busby at 360-280-5088 or laura.busby@ecy.wa.gov and Jill Krumlauf at 360-790-5771 or jill.krumlauf@ecy.wa.gov. You may also visit the [Public Participation Grant website](#).³

² Ecology currently does not have a citizen technical advisor for providing technical assistance to citizens on issues related to the investigation and cleanup of the site.

³ ecology.wa.gov/About-us/How-we-operate/Grants-loans/Find-a-grant-or-loan/Public-participation-grants

Washington's Cleanup Laws

Ecology uses the Model Toxics Control Act (MTCA) and accompanying regulations for cleanup activities.

This plan is required under MTCA, a law that passed in 1989. MTCA provides guidelines for contaminated site cleanup in Washington State and sets standards to ensure the cleanup protects human health and the environment.

Model Toxics Control Act

MTCA began as a grassroots citizen's initiative in 1988 and started the process of systematically cleaning up contaminated sites in Washington. Under MTCA, a current or past property owner or operator may be held responsible for cleaning up contamination on, or coming from, their property to standards that are safe for human health and the environment.

Ecology enacts [MTCA](#)⁴ and oversees cleanups in the state and issues regulations and guidance governing those cleanups. The regulations are found in [Chapter 173-340 Washington Administrative Code \(WAC\)](#).⁵ Ecology investigates reports of property contamination, and if the contamination is seen as a significant threat to human health or the environment, the contaminated property is placed on the Confirmed and Suspected Contaminated Sites List, and the cleanup process begins.

Public participation is an important part of cleanup under the MTCA process. Participation needs are assessed at each cleanup site according to the level of public interest and the degree of risk posed by the contamination. Individuals who live near the site, community groups, businesses, government, other organizations, and interested parties have the opportunity to get involved by commenting on the cleanup process.

Under the MTCA, the cleanup process generally includes multiple steps (see Figure 1), with opportunities for the public to review and comment on cleanup documents. In addition, a partial cleanup (called an interim action) can occur at any time during the cleanup process. The public is provided an opportunity to review and comment on planned interim action work as well.

State Environmental Policy Act

MTCA cleanups also require evaluation under the State Environmental Policy Act (SEPA; [Chapter 197-11 WAC](#))⁶. Under SEPA, the potential for significant adverse environmental impacts from a project or action must be evaluated by state and local agencies when making decisions. This evaluation is subject to public review and comment in parallel with cleanup documents.

⁴ <https://www.ecology.wa.gov/mtca>

⁵ <https://apps.ecology.wa.gov/publications/publications/9406.pdf>

⁶ <https://apps.leg.wa.gov/wac/default.aspx?cite=197-11>

Washington's Cleanup Process

Public participation plans and comment periods are only required for cleanups under a legal agreement with Ecology. Otherwise, all cleanups follow the same steps. The steps are defined by Washington's cleanup law, the Model Toxics Control Act.



January 2024 | publication 19-09-166

Figure 1: Steps in Washington's Cleanup Process⁷

⁷ <https://apps.ecology.wa.gov/publications/SummaryPages/1909166.html>

Site Information

Site background

The site is approximately 266-acres and is located on the southeast side of Maury Island above Puget Sound. A portion of the site was formally operated as a sand and gravel mine by CalPortland (previously known as Glacier NW), and the 1-mile shoreline is the longest undeveloped stretch of Puget Sound shoreline in King County. The County acquired the site in 2010. It is currently open to the public for non-motorized recreation, including walking, hiking, mountain biking, and equestrian use.

Contamination

Environmental investigations have shown that contaminants exist throughout the site because of fallout from the former ASARCO Tacoma Smelter smokestack, and from former shooting sports activities in the area. These include arsenic, lead, and polycyclic aromatic hydrocarbons (PAHs) in the soil that exceed levels allowed under the state’s cleanup law, the Model Toxics Control Act ([MTCA](#))⁸

This site is within the Tacoma Smelter Plume. Ecology’s Southwest Regional Office manages the overall [Tacoma Smelter Plume cleanup](#)⁹. This site is being cleaned up on a separate track through the [formal cleanup process](#)¹⁰, under the management of the Ecology’s Northwest Regional Office. Ecology funds and manages the [Soil Safety Program](#)¹¹ as part of cleaning up the Tacoma Smelter Plume.

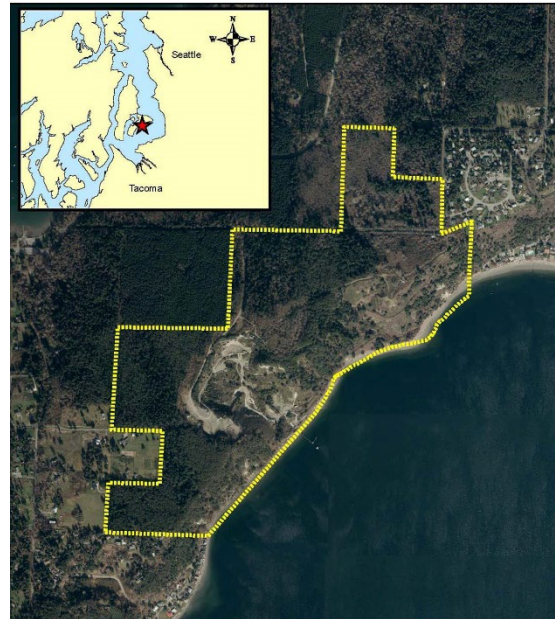


Figure 2: Aerial map of site

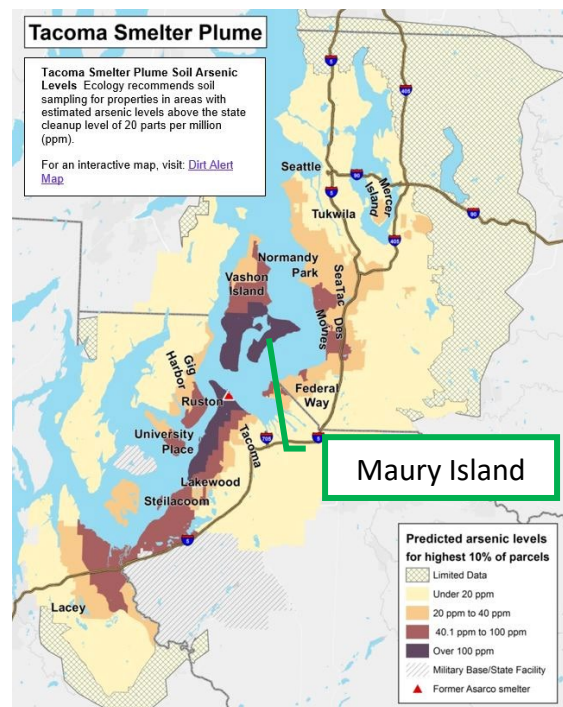


Figure 3: Map of Tacoma Smelter Plume

⁸ <https://ecology.wa.gov/mzca>

⁹ <https://ecology.wa.gov/spills-cleanup/contamination-cleanup/cleanup-sites/tacoma-smelter>

¹⁰ <https://ecology.wa.gov/Spills-Cleanup/Contamination-cleanup/Cleanup-process>

¹¹ <https://ecology.wa.gov/spills-cleanup/contamination-cleanup/cleanup-sites/tacoma-smelter/soil-safety-program>

Cleanup plans

As of December 2023, King County has already completed the first two cleanup phases of the Cleanup Action Plan. (See Figure 4)

In 2024, Ecology invites comment on an amendment to the legal agreement (Agreed Order) with King County that addresses contamination at the site.

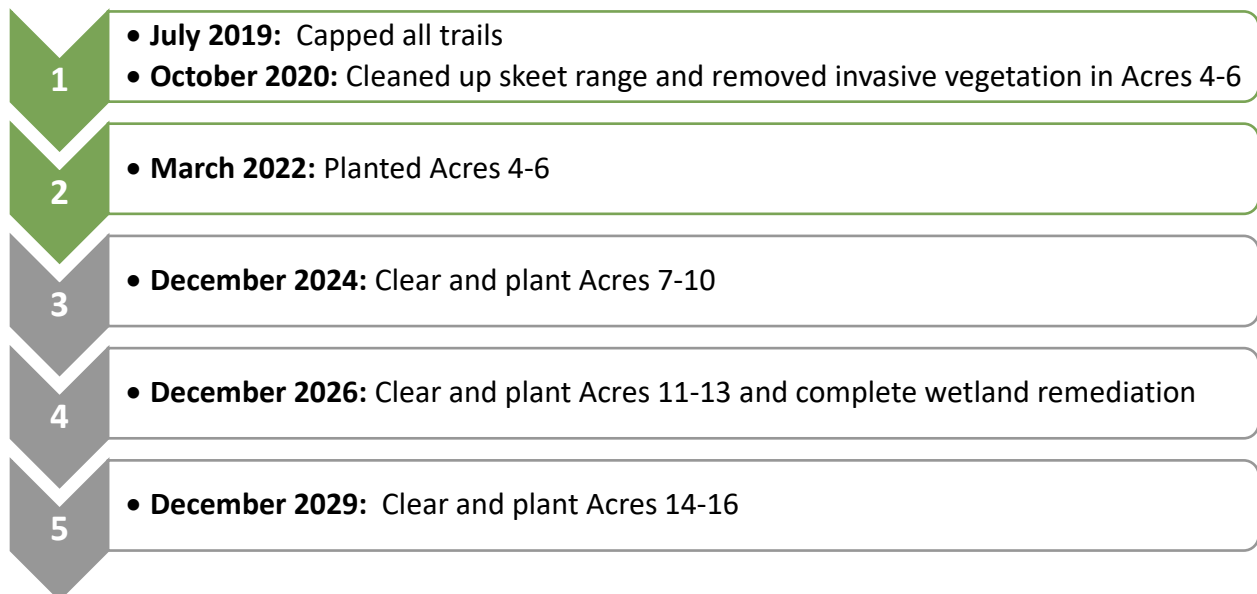
The procedural amendments to the legal agreement include:

- The final 2019 Cleanup Action Plan and an updated schedule of deliverables to complete the remaining phases.
- An Environmental Covenant to restrict land uses on the site such as maintaining the capped roads and trails and not disturbing contaminated soil without Ecology permission.
- Updated legal language to comply with updated applicable laws.

Ecology's Cleanup Action Plan requires King County to:

- Revegetate several areas within the site.
- Cap maintenance roads and majority of trails with a minimum of 3 to 4 inches of compacted gravel and a 3-inch-thick layer of mineral soil (or equivalent).
- Cap to create a parking area over the former skeet range.
- Decommission some trails and redundant trail spurs.
- Complete limited wetland remediation near gravel parking lot.

Cleanup phases



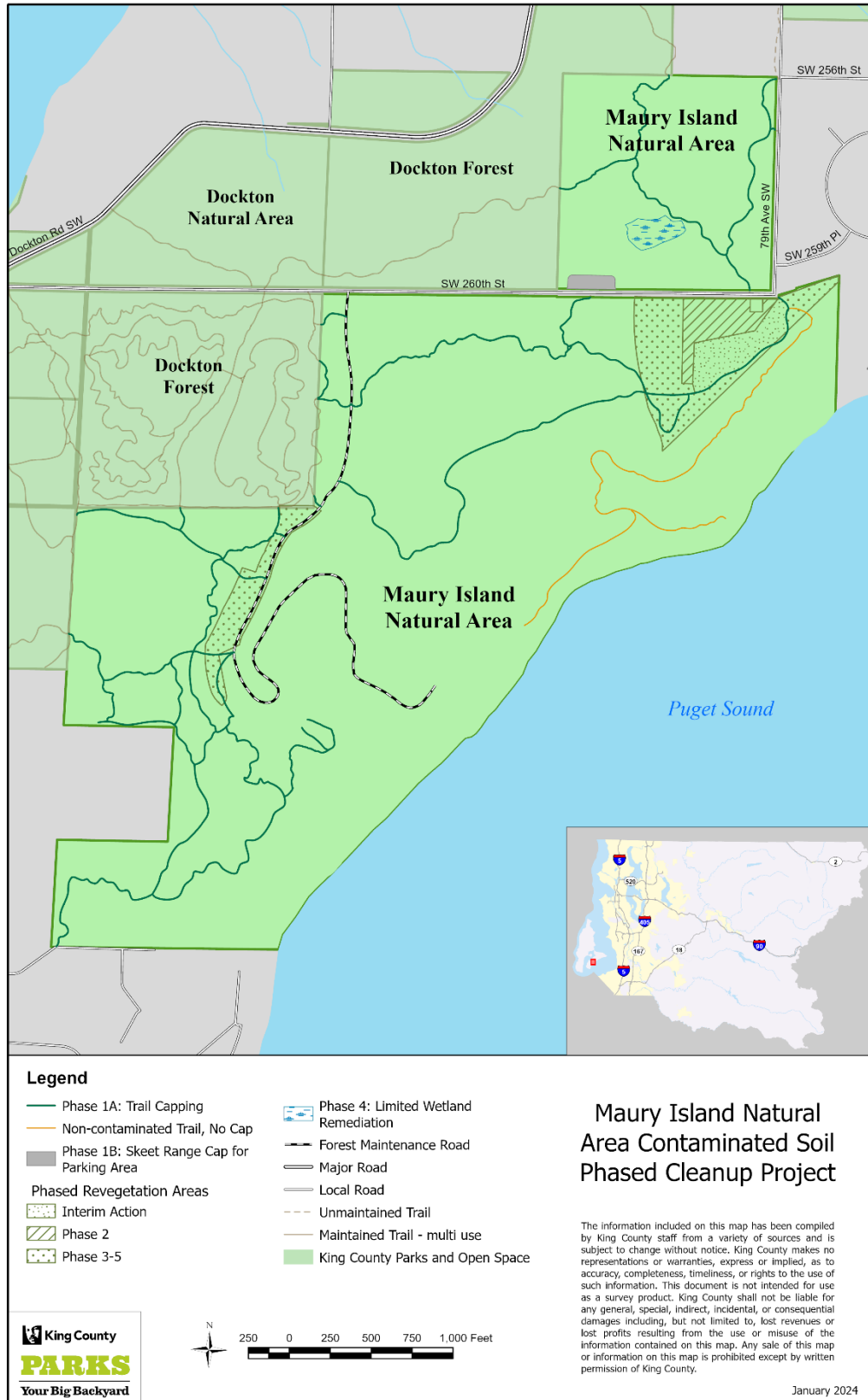


Figure 4: Maury Island Open Space Cleanup Action Plan

Area community

Vashon-Maury Island

Vashon-Maury Island is located in King County, Washington. According to [King County](#)¹², this “island encompasses about thirty-seven square mile area of which 29.7 square miles is Vashon Island and 7.0 square miles is Maury Island. The two islands are linked by a narrow isthmus and are not therefore, two truly independent islands. The island is bordered on the west by Colvos Passage (across from the Kitsap Peninsula), on the south by Dalco Passage (from Tacoma), on the east by Puget Sound and King County, and on the north by Puget Sound. Vashon Island is about 13 miles long (north to south) and 4 miles across (east to west) in the widest areas. Maury Island is about 5 miles long (northeast to southwest) and about 1 mile across (northwest to southeast).”

Tribal engagement

Ecology invites the Muckleshoot Tribe, Puyallup Tribe, Suquamish Tribe, Squaxin Island Tribe, and Snoqualmie Tribe to engage with any decision-making process for this site, and Ecology will ensure these Tribes have ample opportunity to be involved throughout the process on a government-to-government basis. We will also engage with the Duwamish Tribe.

Environmental Justice

Washington Environmental Health Disparity Map

The [Washington Environmental Health Disparity Map](#)¹³ evaluates environmental health risk factors in communities.

Ecology does not interpret rankings as absolute values, and we do not use them to diagnose a community health issue or to label a community. Environmental health disparity is ranked on a

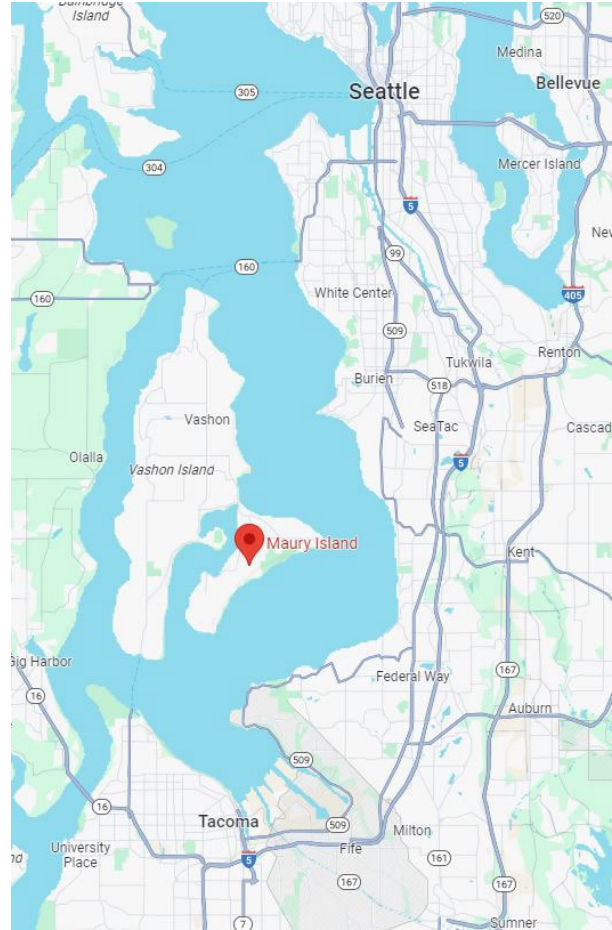


Figure 5: Map showing location of Maury Island

¹² <https://kingcounty.gov/en/legacy/services/environment/water-and-land/groundwater/management-areas/vashon-maury-island-gwma#:~:text=Vashon%2DMAury%20Island%20is%20an,square%20miles%20is%20Maury%20Island.>

¹³ <https://fortress.wa.gov/doh/wtnibl/WTNIBL/>

scale of 1-10 (low to high). The census tract for the **Site ranks 2** for environmental health risk. (See Figure 6).

The Washington State Department of Health mapping tool model was “specifically adapted from CalEnviroScreen – a cumulative environmental impacts assessment mapping tool developed by CalEPA and used in California. – It estimates a cumulative environmental health impact score for each census tract reflecting pollutant exposures and factors that affect people’s vulnerability to environmental pollution.

The model is based on a conceptual formula of Risk = Threat * Vulnerability, where threat and vulnerability are based on several indicators.

The threat is represented by indicators that account for pollution burden, which is a combination of environmental effects and environmental exposures in communities. Environmental effects include indicators that account for adverse environmental quality generally, even when population contact with an environmental hazard is unknown or uncertain. Environmental exposures include the levels of certain pollutants that populations come into contact with.

Vulnerability is represented by indicators of socioeconomic factors and sensitive populations for which there is clear evidence that they may affect susceptibility or vulnerability to an increased pollution burden. Indicators in socioeconomic factors measure population characteristics that modify the pollution burden itself. Sensitive populations refer to those who are at greater risk due to intrinsic biological vulnerability to environmental stressors.

In the model, threat is multiplied by vulnerability in order to reflect the scientific literature that indicates population characteristics often modify and amplify the impact of pollution exposures on certain vulnerable populations. The rankings help to compare health and social factors that may contribute to disparities in a community.”

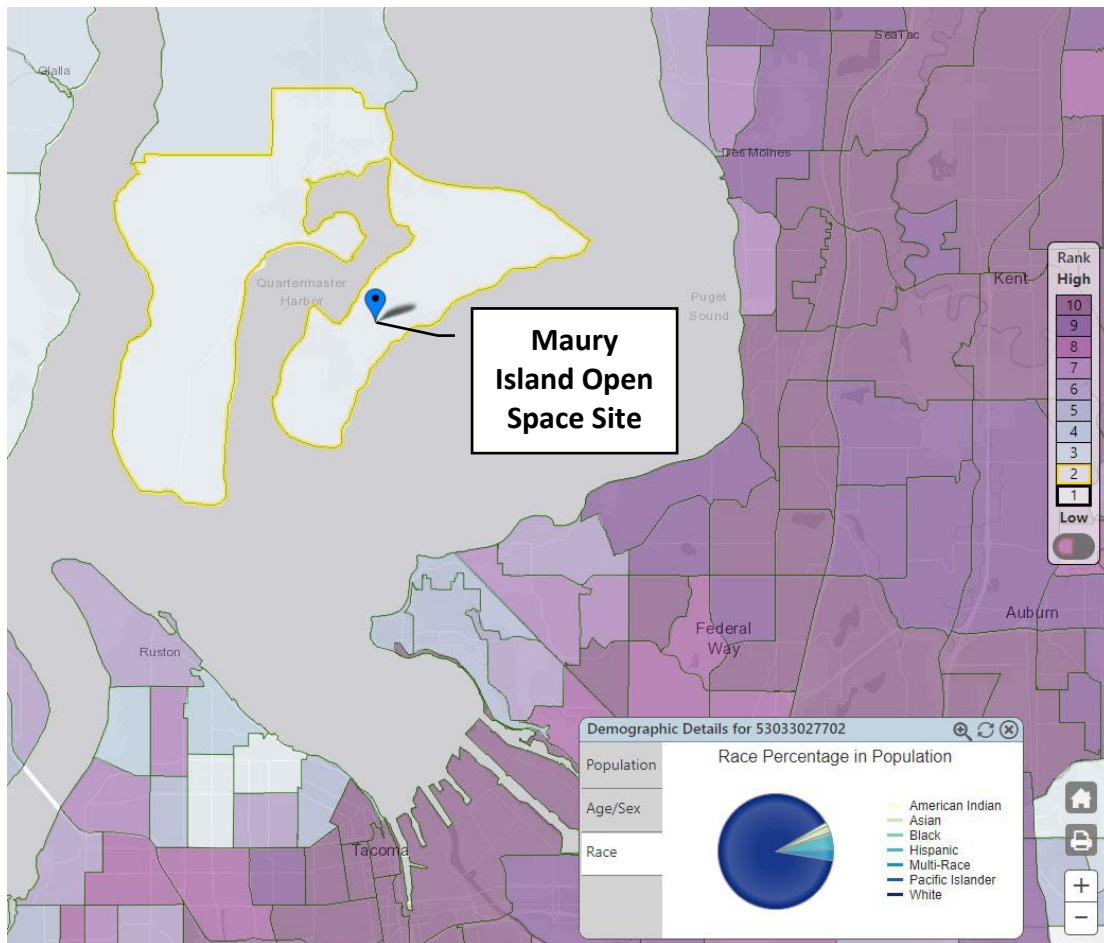


Figure 6: Washington Environmental Health Disparities Map for Maury Island Open Space site

Environmental Justice Screening and Mapping Tool

The data below was generated for a one-mile area around the site using the Environmental Protection Agency’s [Environmental Justice Screening and Mapping Tool](https://ejscreen.epa.gov/mapper/index.html) (EJScreen)¹⁴. See Appendix A for the “EPA EJScreen Community Report” and Figure 7 for the screened area.

For this site, there were no socio-economic indicators above the EPA 80th percentile for Washington State.

¹⁴ <https://ejscreen.epa.gov/mapper/index.html>

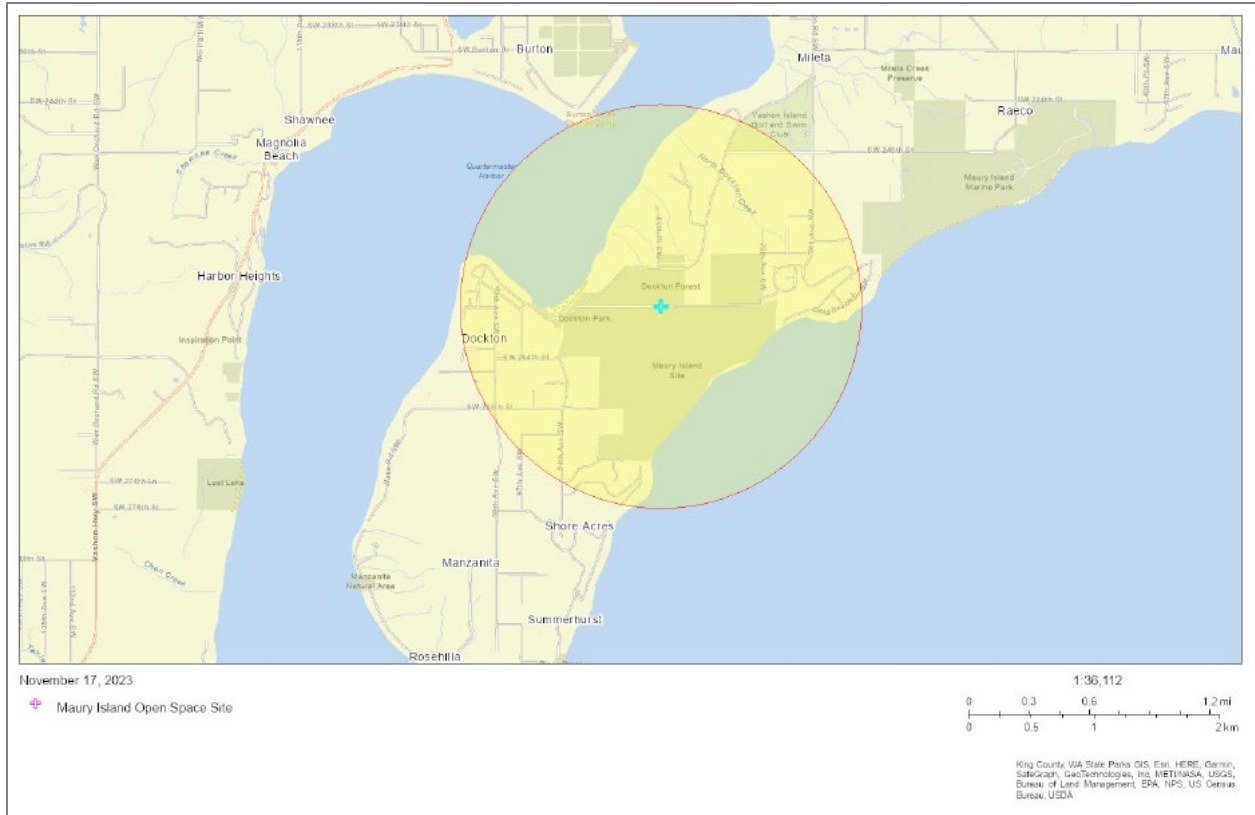


Figure 7: EPA EJSscreen generated map of the outreach impact area for the Maury Island Open Space site

Ecology will plan our public outreach to consider this community’s needs. Ecology will reach out to cultural and community organizations as part of our outreach and provide information in other languages as appropriate following federal guidance¹⁵.

The non-English language most widely spoken in the area is Spanish (0.6% of population speak English “less than very well”). When appropriate, Ecology will provide outreach in Spanish including information on how Spanish speakers can request language support services.

We strive to make our public participation efforts as inclusive as possible and welcome your input about how to best reach the nearby community.

¹⁵ Guidance to Environmental Protection Agency Financial Assistance Recipients Regarding Title VI Prohibition Against National Origin Discrimination Affecting Limited English Proficient Persons, 69 Fed. Reg. § 35602 (June 15, 2004).

Public Participation Activities

Members of the public may ask questions, submit informal comments, or share site information at any time. Interested parties do not need to wait for a formal public comment period to contact Ecology.

However, to be included in the formal site record, comments about the site investigation, cleanup alternatives, or cleanups must be submitted during formal comment periods. In addition, the public is invited to review site documents before they become final. This is the most direct and influential way to learn more about the site and be involved in the cleanup's decision-making.

How we share information with the community

During specific stages of the cleanup, Ecology will mail notices about public comment periods to addresses surrounding the site. The mailing list area will include addresses within at least a 1-mile radius of the site and other interested organizations and individuals. These notices will provide general information about the site, contact information for submitting comments, and times and locations of public meetings or hearings or how to request one if not yet scheduled.

Ecology may also develop documents outside of comment periods to keep the community updated on the site's status. These informational documents will be available online and at document repositories. Print copies may be mailed to the nearby community if we feel the message warrants the associated cost and resources.

Comment period notices and other site announcements may also be posted in various locations throughout the community (for example, local businesses, schools, libraries).

Postal mailing list

Ecology maintains a mailing list that includes addresses within at least a 1-mile radius of the site and relevant local, state, and federal government contacts.

These people receive public comment notices when draft documents are available.

We will add additional individuals, organizations, and other interested parties to the mailing list as requested. If you would like to be added to the mailing list for this site, please contact Ian Fawley at 425-324-5901 or Ian.Fawley@ecy.wa.gov.

Site Register

Public comment periods, events, and other cleanup notices are published in Ecology's [Site Register](#).¹⁶ To receive the *Site Register* by email, please [subscribe online](#),¹⁷ or contact Sarah Kellington at sarah.kellington@ecy.wa.gov or 360-280-3167.

Newspaper display ads or legal notices

We will announce public comment periods and events for this site in ads or notices published in [The Seattle Times](#)¹⁸ and [Vashon-Maury Island Beachcomber](#).¹⁹

Email lists

Ecology maintains an email list to update interested persons about this site. If you would like to be added to the email list for this site, please contact Ian Fawley at 425-324-5901 or ian.fawley@ecy.wa.gov.

Ecology's website and social media platforms

We maintain a website for the [Maury Island Open Space cleanup site](#).²⁰ The website provides site information, and you may download cleanup documents.

We will also publish notice on our [Public Input & Events Listing](#).²¹

We may also share information about cleanup sites through [news releases, our ECOconnect blog, and social media](#).²²

Places to see print documents

During public comment periods when review locations are accessible, you can find print documents at the following locations:

Vashon Library

17210 Vashon Highway SW
Vashon Island, WA 980740
Phone: (206) 463-2069

Washington Department of Ecology

Northwest Region Office
15700 Dayton Ave N
Shoreline, WA 98133

To schedule an appointment with Ecology, please contact the Northwest Region Office Central Records staff at (206) 594-0016 or nwro_public_request@ecy.wa.gov.

¹⁶ ecology.wa.gov/Regulations-Permits/Guidance-technical-assistance/Site-Register-lists-and-data

¹⁷ https://public.govdelivery.com/accounts/WAECY/subscriber/new?topic_id=WAECY_118

¹⁸ <https://www.seattletimes.com/>

¹⁹ <https://www.vashonbeachcomber.com/>

²⁰ <https://apps.ecology.wa.gov/cleanupsearch/site/1532>

²¹ ecology.wa.gov/Events/Search/Listing

²² ecology.wa.gov/About-us/Get-to-know-us/News

Signs around the cleanup site

We may also install signs displaying information about project status, traffic impacts, and health risks around the cleanup site.

How to share information with us

At minimum, MTCA requires 30-day public comment periods for draft cleanup documents and 14-day comment periods SEPA documents. SEPA documents are often made available for public review with other cleanup documents. In that case, we combine the comment periods, and they last at least 30 days. We may hold comment periods longer than 30 days.

We may also identify public concerns and cleanup goals by meeting with and soliciting information from interested community members and organizations. To collaborate with us about this site, please contact Ian Fawley at 425-324-5901 or Ian.Fawley@ecy.wa.gov.

Public comment periods

Formal 30-day comment periods allow interested members of the public to comment on draft documents, legal agreements, and proposed cleanup actions. If there is significant interest, Ecology may extend the public comment period. When Ecology oversees SEPA determinations, we hold comment periods for at least two weeks and may extend to 30 days or more when other cleanup documents are concurrently available for review.

Following the comment period, we publish all the input we received and respond to significant comments and questions, as appropriate. If the comments result in significant changes to the cleanup documents, then the documents will be revised and re-issued for public review. If the comments do not result in significant changes, then they become final.

Public events

We hold in-person and online public meetings, workshops, open houses, and public hearings based on community interest. If we have not scheduled a meeting, we will hold one if 10 people request it, and this may cause us to extend a public comment period so the meeting occurs during it.

Events are held at locations close to the site that meet Americans with Disabilities Act standards. Public meetings, workshops, open houses, and hearings are always announced in advance using a variety of methods.

Americans with Disabilities Act

To request ADA accommodation for disabilities, or printed materials in a format for the visually impaired, contact the Ecology ADA Coordinator at 360-407-6831 or ecyadacoordinator@ecy.wa.gov, or visit our [ADA website](#).²³ People with impaired hearing may call Washington Relay Service at 711. People with speech disability may call TTY at 877-833-6341.

Plan Amendments

Ecology developed this plan following MTCA regulations (WAC 173-340-600). We review it as the cleanup progresses and amend it as necessary. You may suggest amendments to Ian Fawley at 425-324-5901 or Ian.Fawley@ecy.wa.gov. This plan includes information for the public regarding opportunities for public involvement and comment. The outreach activities discussed in this section reflect Ecology's current plans for keeping the public informed and providing ways for those interested in the site to communicate their concerns and questions to us.

If you feel the planned outreach activities and mechanisms described in this plan are insufficient, or should otherwise be modified, we will work to find solutions. New outreach activities or outreach tools established as a result can be implemented right away, with or without amending this plan.

²³ <https://ecology.wa.gov/About-us/Accessibility-equity/Accessibility>

Appendices

Appendix A. EPA EJScreen Community Report

EPA's EJSCREEN report for a 1-mile radius of the Maury Island Open Space site.



EJScreen Community Report

This report provides environmental and socioeconomic information for user-defined areas, and combines that data into environmental justice and supplemental indexes.

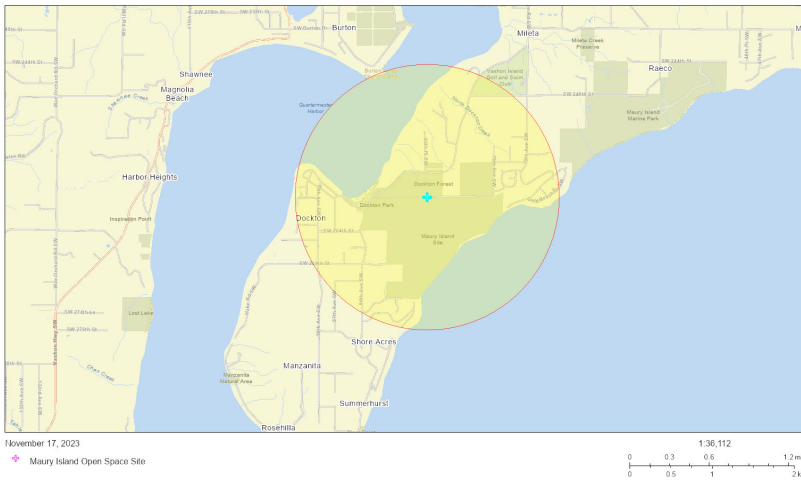
Vashon, WA

1 mile Ring Centered at 47.370861,-122.443657

Population: 530

Area in square miles: 3.14

A3 Landscape



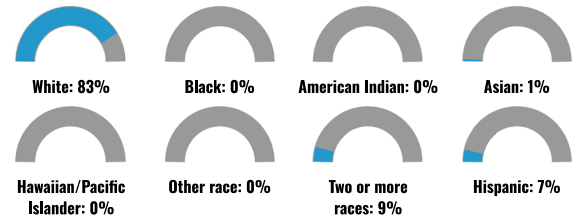
COMMUNITY INFORMATION



LANGUAGES SPOKEN AT HOME

LANGUAGE	PERCENT
English	94%
Spanish	4%
Russian, Polish, or Other Slavic	1%
Other Indo-European	1%
Total Non-English	6%

BREAKDOWN BY RACE



BREAKDOWN BY AGE



LIMITED ENGLISH SPEAKING BREAKDOWN



Notes: Numbers may not sum to totals due to rounding. Hispanic population can be of any race. Source: U.S. Census Bureau, American Community Survey (ACS) 2017-2021. Life expectancy data comes from the Centers for Disease Control.

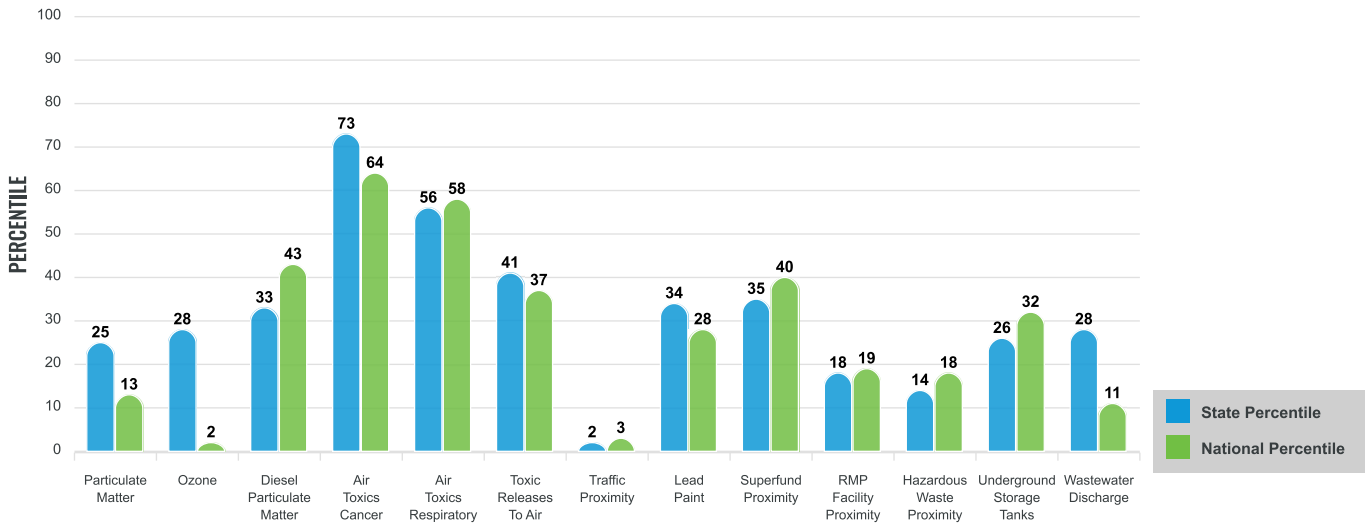
Environmental Justice & Supplemental Indexes

The environmental justice and supplemental indexes are a combination of environmental and socioeconomic information. There are thirteen EJ indexes and supplemental indexes in EJScreen reflecting the 13 environmental indicators. The indexes for a selected area are compared to those for all other locations in the state or nation. For more information and calculation details on the EJ and supplemental indexes, please visit the [EJScreen website](#).

EJ INDEXES

The EJ indexes help users screen for potential EJ concerns. To do this, the EJ index combines data on low income and people of color populations with a single environmental indicator.

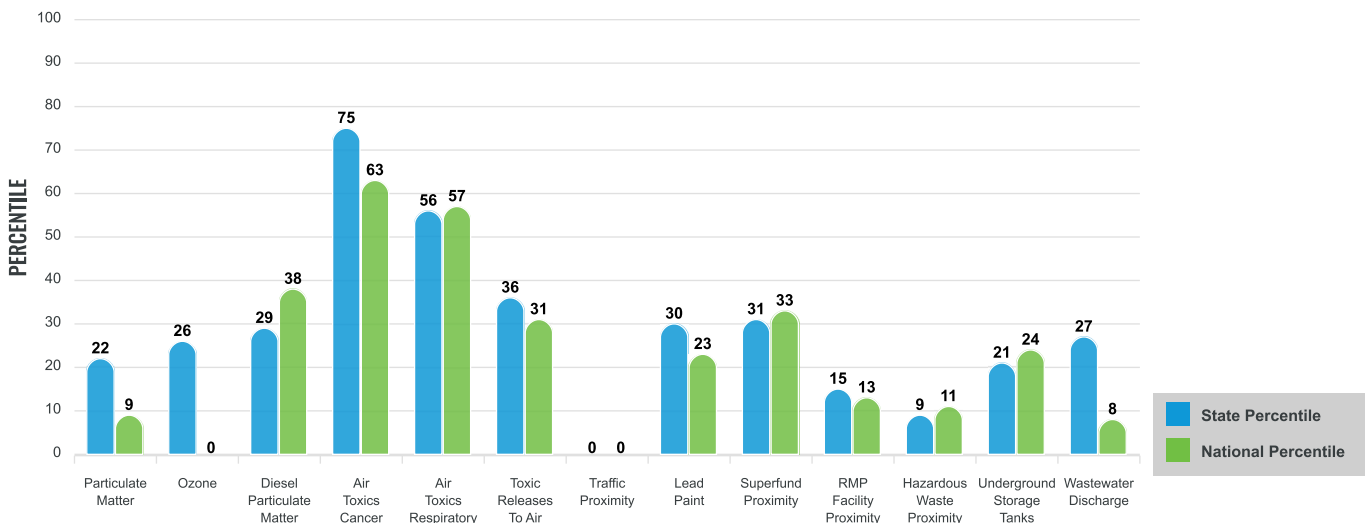
EJ INDEXES FOR THE SELECTED LOCATION



SUPPLEMENTAL INDEXES

The supplemental indexes offer a different perspective on community-level vulnerability. They combine data on percent low-income, percent linguistically isolated, percent less than high school education, percent unemployed, and low life expectancy with a single environmental indicator.

SUPPLEMENTAL INDEXES FOR THE SELECTED LOCATION



These percentiles provide perspective on how the selected block group or buffer area compares to the entire state or nation.

Report for 1 mile Ring Centered at 47.370861,-122.443657

EJScreen Environmental and Socioeconomic Indicators Data

SELECTED VARIABLES	VALUE	STATE AVERAGE	PERCENTILE IN STATE	USA AVERAGE	PERCENTILE IN USA
POLLUTION AND SOURCES					
Particulate Matter (µg/m ³)	6.81	7.02	39	8.08	17
Ozone (ppb)	48.8	49.8	46	61.6	1
Diesel Particulate Matter (µg/m ³)	0.33	0.355	52	0.261	74
Air Toxics Cancer Risk* (lifetime risk per million)	40	27	94	25	94
Air Toxics Respiratory HI*	0.5	0.39	74	0.31	92
Toxic Releases to Air	1,300	1,800	66	4,600	64
Traffic Proximity (daily traffic count/distance to road)	0.71	190	2	210	3
Lead Paint (% Pre-1960 Housing)	0.16	0.23	53	0.3	43
Superfund Proximity (site count/km distance)	0.1	0.18	53	0.13	67
RMP Facility Proximity (facility count/km distance)	0.091	0.4	25	0.43	26
Hazardous Waste Proximity (facility count/km distance)	0.12	1.6	17	1.9	23
Underground Storage Tanks (count/km ²)	0.42	6.3	32	3.9	38
Wastewater Discharge (toxicity-weighted concentration/m distance)	6.9E-06	0.024	44	22	15
SOCIOECONOMIC INDICATORS					
Demographic Index	12%	28%	13	35%	15
Supplemental Demographic Index	5%	12%	6	14%	6
People of Color	17%	32%	29	39%	34
Low Income	7%	24%	16	31%	13
Unemployment Rate	0%	5%	0	6%	0
Limited English Speaking Households	3%	4%	67	5%	69
Less Than High School Education	0%	8%	0	12%	0
Under Age 5	5%	6%	51	6%	51
Over Age 64	17%	16%	59	17%	56
Low Life Expectancy	14%	18%	11	20%	8

*Diesel particulate matter, air toxics cancer risk, and air toxics respiratory hazard index are from the EPA's Air Toxics Data Update, which is the Agency's ongoing, comprehensive evaluation of air toxics in the United States. This effort aims to prioritize air toxics, emission sources, and locations of interest for further study. It is important to remember that the air toxics data presented here provide broad estimates of health risks over geographic areas of the country, not definitive risks to specific individuals or locations. Cancer risks and hazard indices from the Air Toxics Data Update are reported to one significant figure and any additional significant figures here are due to rounding. More information on the Air Toxics Data Update can be found at: <https://www.epa.gov/haps/air-toxics-data-update>.

Sites reporting to EPA within defined area:

Superfund	0
Hazardous Waste, Treatment, Storage, and Disposal Facilities	0
Water Dischargers	3
Air Pollution	0
Brownfields	0
Toxic Release Inventory	0

Other community features within defined area:

Schools	0
Hospitals	0
Places of Worship	0

Other environmental data:

Air Non-attainment	No
Impaired Waters	Yes

Selected location contains American Indian Reservation Lands*	No
Selected location contains a "Justice40 (CEJST)" disadvantaged community	No
Selected location contains an EPA IRA disadvantaged community	No

Report for 1 mile Ring Centered at 47.370861,-122.443657

EJScreen Environmental and Socioeconomic Indicators Data

HEALTH INDICATORS					
INDICATOR	HEALTH VALUE	STATE AVERAGE	STATE PERCENTILE	US AVERAGE	US PERCENTILE
Low Life Expectancy	14%	18%	11	20%	8
Heart Disease	5.8	5.3	63	6.1	46
Asthma	9.2	10.5	14	10	30
Cancer	8.9	6.3	96	6.1	95
Persons with Disabilities	13.3%	13.1%	55	13.4%	55

CLIMATE INDICATORS					
INDICATOR	HEALTH VALUE	STATE AVERAGE	STATE PERCENTILE	US AVERAGE	US PERCENTILE
Flood Risk	14%	11%	77	12%	76
Wildfire Risk	0%	12%	0	14%	0

CRITICAL SERVICE GAPS					
INDICATOR	HEALTH VALUE	STATE AVERAGE	STATE PERCENTILE	US AVERAGE	US PERCENTILE
Broadband Internet	6%	9%	50	14%	33
Lack of Health Insurance	3%	6%	20	9%	18
Housing Burden	No	N/A	N/A	N/A	N/A
Transportation Access	Yes	N/A	N/A	N/A	N/A
Food Desert	No	N/A	N/A	N/A	N/A

Footnotes

Report for 1 mile Ring Centered at 47.370861,-122.443657