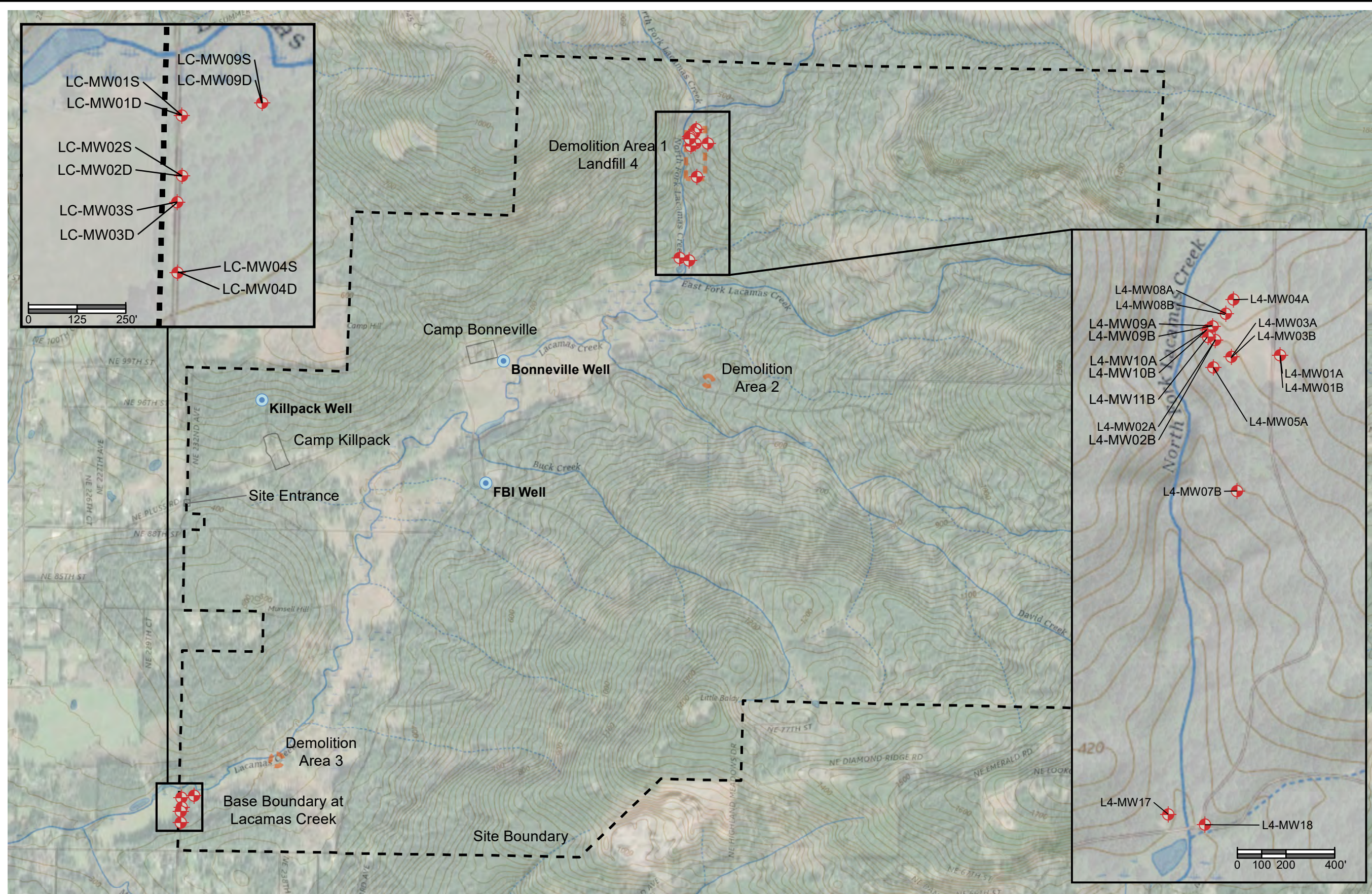


\\pbsenv\lan\Projects\76000\76100-76199\76151_Camp Bonneville_Vancouver\DWG\GIS\2020\mxd\Fig2_SiteMap_2020Jun.mxd



SOURCES: USGS, ESRI WORLD IMAGERY

LEGEND			
	Approximate Location of Water Supply Well		Site Boundary
	Monitoring Well Location		Demolition Area
			Camp Boundary

PBS Engineering and Environmental Inc.
4412 SW Corbett Ave.,
Portland, OR 97239
503.248.1939
pbsusa.com



INVESTIGATION AREAS WITHIN CAMP
BONNEVILLE BOUNDARY
CAMP BONNEVILLE
CLARK COUNTY, WASHINGTON

PROJECT	76151.009
DATE	DEC 2020
FIGURE	2

1 inch = 1,600 feet
0 400 800 1,600'
PREPARED FOR: CLARK COUNTY