



Electronic Copy

STATE OF WASHINGTON  
**DEPARTMENT OF ECOLOGY**

Northwest Region Office  
PO Box 330316, Shoreline, WA 98133-9716 • 206-594-0000

February 2, 2024

Jeff Johnson  
ExxonMobil Environmental and Property Solutions  
25915 S. Frontage Rd.  
Channahon, IL 60410-8723  
([jeff.a-sh-e.johnson@exxonmobil.com](mailto:jeff.a-sh-e.johnson@exxonmobil.com))

**Re: No Further Action opinion for the following contaminated Site**

Site name: BP Brooklyn  
Site address: 4557 Brooklyn Ave NE, Seattle WA 98105  
Facility/Site ID: 4819383  
Cleanup Site ID: 7601  
VCP Project No.: NW3253

Dear Jeff Johnson:

The Washington State Department of Ecology (Ecology) received your request for an opinion regarding the sufficiency of your independent cleanup of the BP Brooklyn facility (Site) under the Voluntary Cleanup Program (VCP).<sup>1</sup> This letter provides our opinion and analysis. We are providing this opinion under the authority of the Model Toxics Control Act (MTCA), [Chapter 70A.305 RCW](#).<sup>2</sup>

## Opinion

Ecology has determined that no further remedial action is necessary to clean up contamination at the Site.

Ecology bases this opinion on an analysis of whether the remedial action meets the substantive requirements of MTCA and its implementing regulations, which are specified in Chapter 70A.305 RCW and [Chapter 173-340 WAC](#)<sup>3</sup> (collectively called "MTCA").

## Site Description

This opinion applies only to the Site described below. The Site is defined by the nature and extent of contamination associated with the following release(s):

---

<sup>1</sup> <https://ecology.wa.gov/Spills-Cleanup/Contamination-cleanup/Voluntary-Cleanup-Program>

<sup>2</sup> <https://app.leg.wa.gov/RCW/default.aspx?cite=70A.305>

<sup>3</sup> <https://apps.leg.wa.gov/WAC/default.aspx?cite=173-340>

- Total petroleum hydrocarbons in the gasoline, diesel, and oil ranges (TPH-G, TPH-D, and TPH-O); and benzene, toluene, ethylbenzene, and xylenes (BTEX) in soil and groundwater.

Enclosure A includes a Site description, history, and diagrams.

Please note that releases from multiple sites can affect a parcel of real property. At this time, Ecology has no information that other sites affect the parcel(s) associated with this Site.

## **Basis for the Opinion**

Ecology bases this opinion on information in the documents listed in Enclosure B. You can request these documents by filing a [records request](#).<sup>4</sup> For help making a request, contact the Public Records Officer at [recordsofficer@ecy.wa.gov](mailto:recordsofficer@ecy.wa.gov) or call (360) 407-6040. Before making a request, check if the documents are available on the [Site webpage](#).<sup>5</sup>

This opinion is void if information in any of the listed documents is materially false or misleading.

## **Analysis of the Cleanup**

Ecology has concluded that no further remedial action is necessary to clean up contamination at the Site. Ecology bases its conclusion on the following analysis:

### **Characterizing the Site**

Ecology has determined your completed Site characterization is sufficient for setting cleanup standards and selecting a cleanup action. Enclosure A describes the Site.

The definition of the lateral and vertical extent of Site impacts to soil and groundwater was completed in accordance with the MTCA by completion of Site investigations conducted from 1991 through 2021.

### **Setting cleanup standards**

Ecology has determined the cleanup levels and points of compliance you set for the Site meet the substantive requirements of MTCA.

## **Soil**

### ***Cleanup levels***

Method A soil cleanup levels suitable for unrestricted land use and protection of groundwater are typically appropriate. However, an [empirical demonstration](#)<sup>6</sup> documented the applicability of Method B direct-contact soil cleanup levels at the Site, including the [generic TPH soil cleanup level of 1,500 milligrams per kilogram \(mg/kg\)](#).<sup>7</sup> Residual TPH soil concentrations above Method A cleanup levels were present below the water table and below the direct-contact compliance depth of 15 feet below ground surface (bgs).

---

<sup>4</sup> <https://ecology.wa.gov/About-us/Accountability-transparency/Public-records-requests>

<sup>5</sup> <https://apps.ecology.wa.gov/cleanupsearch/site/7601>

<sup>6</sup> <https://apps.ecology.wa.gov/publications/SummaryPages/1609047.html>

<sup>7</sup> <https://apps.ecology.wa.gov/publications/SummaryPages/1509043.html>

The Site is located in an area with limited terrestrial habitat and qualified for a Terrestrial Ecological Evaluation (TEE) exclusion, per [WAC 173-340-7491](#)<sup>8</sup>. There are less than 1.5 acres of contiguous undeveloped land on or within 500 feet of any area of the Site. Land use at the Site and surrounding area makes substantial wildlife exposure unlikely. Cleanup levels protective of terrestrial species are not needed at this Site.

### ***Point of compliance***

The soil point of compliance for protection of groundwater is soils throughout the Site. The point of compliance for direct contact with soil is the soil between ground surface and 15 feet bgs.

## **Groundwater**

### ***Cleanup levels***

The highest beneficial use for groundwater under MTCA is a drinking water source, unless it can be demonstrated that the groundwater is not potable. MTCA Method A groundwater cleanup levels are protective of potable use and are therefore the default.

### ***Point of compliance***

The standard point of compliance for groundwater is throughout the Site, from the uppermost level of the saturated zone extending vertically to the lowest depth that could potentially be affected.

### **Selecting the cleanup action**

Ecology has determined the cleanup action you selected for the Site meets the substantive requirements of MTCA.

Ecology has determined the cleanup action you selected for the Site meets the substantive requirements of MTCA. The cleanup action included the following remedial technologies:

- Removal of liquid petroleum product floating on the water table.
- Operation of air sparging / soil vapor extraction (AS/SVE) and groundwater pump / treat systems to remediate soil and groundwater contamination.
- Removal of fuel underground storage tanks (USTS) and contaminated soil.
- In-situ chemical oxidation (ISCO) to treat contaminated groundwater using injection wells; and
- Confirmation soil sampling and groundwater monitoring to assess the effectiveness of the cleanup action.

### **Implementing the cleanup action**

Ecology has determined your cleanup meets the standards set for the Site. The cleanup action consisted of the following activities:

- A product recovery well, floating skimmer, and product storage system were installed and operated at the Site from 1992 through 1996. Approximately 150 gallons of petroleum product had been recovered by March 1996.
- An AS/SVE system and groundwater pump / treat system operated from April 1997 through November 2000. These systems removed 9,800 pounds of TPH-G as vapor, treated 683,700 gallons of contaminated groundwater, and removed 465 gallons of light non-aqueous phase liquid (LNAPL).

---

<sup>8</sup> <https://app.leg.wa.gov/wac/default.aspx?cite=173-340-7491>

- These remediation systems also operated from February 2005 to August 2014, resulting in removal of an additional 33,000 pounds of TPH-G as vapor and 579,000 gallons of contaminated groundwater.
- ISCO injections were completed in November 2016 and August 2017.
- Three 2,000-gallon gasoline USTs (previously closed in place) and three 10,000-gallon gasoline USTs were removed in June 2018, along with 3,687 tons of petroleum-contaminated soil that were disposed off-Site at a permitted facility.
- Approximately 10,700 gallons of groundwater were removed during excavation dewatering, treated on-Site, and disposed in the sanitary sewer system.
- Oxygen-release compound pellets (approximately 1,000 pounds) were added to the UST excavation backfill.
- Confirmation soil sampling and groundwater monitoring were completed from September 2018 through September 2021 to assess the effectiveness of the cleanup action.

The Site cleanup meets the requirement for Groundwater Model Remedy 5, in accordance with [\*Model Remedies for Sites with Petroleum Impacts to Groundwater, Ecology Publication No. 16-09-057, Revised December 2017\*](#)<sup>9</sup>. Therefore, a Feasibility Study and Disproportionate Cost Analysis are not required to document the remedy selection. The requirements of Groundwater Model Remedy are:

- A release of petroleum has been confirmed and Ecology notification of the release has been completed.
- Petroleum hydrocarbons consisting of gasoline, middle distillates/oils, or heavy fuels/oils and their constituents are the only contaminants present in soil and groundwater.
- An adequate Site characterization has been completed to confirm that groundwater, surface water, or sediments have not been impacted by the petroleum release.
- Emergency or interim actions are not required due to the lower risk nature of the Site.
- The Site meets the criteria for a TEE exclusion.
- The primary remedy consists of source removal, including free product and contaminated soil, to the greatest extent practicable.
- The Site has not caused impacts above the practical quantitation limit (PQL) to any water supply well used for drinking water purposes.
- An empirical demonstration has been used to document the applicability of Method B direct-contact soil cleanup levels, including the 1,500 mg/kg generic TPH soil cleanup level.
- Groundwater meets Method A cleanup levels throughout the Site.
- Conditional points of compliance are not used at the Site.
- The vapor intrusion pathway is not present, and an environmental covenant is not needed on the Property.

---

<sup>9</sup> <https://apps.ecology.wa.gov/publications/SummaryPages/1609057.html>

## **Decommissioning of Site resource protection wells**

When Site resource protection wells (including monitoring wells, air sparge wells, and vapor extraction wells) are no longer needed to conduct post-cleanup monitoring or for any other purpose, these wells must be decommissioned in accordance with [WAC 173-160-460](#)<sup>10</sup>. Wells that are not decommissioned must be maintained and protected from damage.

## **Listing of the Site**

Based on this opinion, Ecology will initiate the process of removing the Site from the Contaminated Sites List and the Leaking Underground Storage Tanks List.

The Site will be added to the No Further Action sites list.

## **Limitations of the Opinion**

### **Opinion does not settle liability with the state**

Liable persons are strictly liable, jointly and severally, for all remedial action costs and for all natural resource damages resulting from the release or releases of hazardous substances at the Site. This opinion does not:

- Resolve or alter a person's liability to the state.
- Protect liable persons from contribution claims by third parties.

To settle liability with the state and obtain protection from contribution claims, a person must enter into a consent decree with Ecology under RCW [70A.305.040](#)(4).<sup>11</sup>

### **Opinion does not constitute a determination of substantial equivalence**

To recover remedial action costs from other liable persons under MTCA, one must demonstrate that the action is the substantial equivalent of an Ecology-conducted or Ecology-supervised action. This opinion does not determine if the action you performed is substantially equivalent. Courts make that determination. See RCW [70A.305.080](#)<sup>12</sup> and WAC [173-340-545](#).<sup>13</sup>

### **State is immune from liability**

The state, Ecology, and its officers and employees are immune from all liability, and no cause of action of any nature may arise from any act or omission in providing this opinion. See RCW [70A.305.170](#)(6).<sup>14</sup>

## **Termination of Agreement**

Thank you for cleaning up the Site under the VCP. This opinion terminates the VCP Agreement governing VCP Project No. NW3253.

---

<sup>10</sup> <https://app.leg.wa.gov/wac/default.aspx?cite=173-160-460>

<sup>11</sup> <https://app.leg.wa.gov/RCW/default.aspx?cite=70A.305.040>

<sup>12</sup> <https://app.leg.wa.gov/RCW/default.aspx?cite=70A.305.080>

<sup>13</sup> <https://apps.leg.wa.gov/WAC/default.aspx?cite=173-340-545>

<sup>14</sup> <https://app.leg.wa.gov/RCW/default.aspx?cite=70A.305.170>

## Questions

If you have any questions about this opinion or the termination of the Agreement, please contact me at 425-324-1892 or [michael.warfel@ecy.wa.gov](mailto:michael.warfel@ecy.wa.gov).

Sincerely,



Michael R. Warfel  
VCP Site Manager  
Toxics Cleanup Program, NWRO

Enclosures (2):

- A – Site Description, History, and Diagrams
- B – Basis for the Opinion: List of Documents

cc:

Bobby Thompson, ([robert.thompson@stantec.com](mailto:robert.thompson@stantec.com))  
Jeanette Erickson, ([ericksonufish@aol.com](mailto:ericksonufish@aol.com))  
Kim Johannessen, Johannessen & Associates, P.S. ([kmj@johanassocs.com](mailto:kmj@johanassocs.com))  
Charlie Huber, Lane Powell ([huberc@lanepowell.com](mailto:huberc@lanepowell.com))  
Chris Carter, SoundEarth Strategies ([chrisc@soundearthinc.com](mailto:chrisc@soundearthinc.com))  
VCP Fiscal ([ecyrevcp@ecy.wa.gov](mailto:ecyrevcp@ecy.wa.gov))  
Sonia Fernández, VCP Coordinator ([sonia.fernandez@ecy.wa.gov](mailto:sonia.fernandez@ecy.wa.gov))

## Enclosure A

---

### Site Description, History, and Diagrams

## Site Description

**Site Definition:** The Site consists of contamination associated with operation of a former Mobil gasoline service station located at 4557 Brooklyn Avenue NE in Seattle, Washington (the Property). Historical service station operations resulted in the release of the following contaminants to soil and groundwater: gasoline-, diesel-, and oil-range petroleum hydrocarbons (TPH-G, TPH-D, and TPH-O); and benzene, toluene, ethylbenzene, and xylenes (BTEX).

**Area Description:** The 0.19-acre Property is located in a residential and commercial district of Seattle, Washington, and is situated on the southwest corner of Brooklyn Avenue Northeast, and Northeast 47<sup>th</sup> Street (Figure 1). The commercial district consists of retail stores, office buildings, and hotels. The Property is recorded as King County parcel number 881740-0005.

**Property History and Current Use:** The Property was previously a Mobil-branded gasoline service station and later a 76-branded service station. The station building and associated structures were demolished in December 2017. The fuel underground storage tanks (USTs) were removed in June 2018 (see table below) and the entire surface of the Property was paved with asphalt. Currently the Property is a vacant paved lot enclosed with security fencing.

**Contaminant Sources and History of Releases:** The potential contaminant source for this Site was leakage from the USTs, related piping, and dispenser islands (Figure 2). The original release was reported to Ecology in August 1991. The history and status of the USTs are summarized in the following table:

UST Contents	UST Size, Gallons	Closure Date	Closure	Removal Date
Gasoline (leaded?)	2,000	6/7/1988	Closed in place	June 2018
Gasoline (leaded?)	2,000	6/7/1988	Closed in place	June 2018
Gasoline (leaded?)	2,000	6/7/1988	Closed in place	June 2018
Used Oil	500	5/12/1988	Removed	-----
Gasoline (Unleaded)	10,000	8/24/2017	Out of service	June 2018
Gasoline (Unleaded)	10,000	8/24/2017	Out of service	June 2018
Gasoline (Unleaded)	10,000	8/24/2017	Out of service	June 2018

**Physiographic Setting:** The Site is situated in the Puget Sound Lowland which lies between the Olympic Mountains on the west and the Cascade Mountains on the east. The Property is approximately 1 mile northwest of Lake Washington (Union Bay), approximately 1 mile north of Lake Union (Portage Bay), and a little more than 1 mile southeast of Green Lake. The ground surface elevation of the Site is approximately 215 feet above mean sea level. Regional topography slopes to the south towards Portage Bay.

**Ecological Setting:** Little undeveloped land exists immediately around the Site and within 500 feet of the Site. The entire surface of the Property is paved with asphalt. Retail stores, gas

stations, office buildings, and apartments surround the Property. As noted above in the text of this opinion letter, the Site qualifies for a Terrestrial Ecological Evaluation (TEE) exclusion, documenting that exposure of local wildlife to Site contaminants is unlikely.

**Geology:** The geologic materials on the Property are generally well-graded gravels or gravel sand mixtures, with little or no fines. The native material encountered during drilling generally consisted of damp to moist, light brown, very fine-to medium-grained sand with silt from ground surface to approximately 15 feet below ground surface (bgs). These strata are underlain by wet to saturated, gray, fine-to coarse-grained sand, with some fine-grained gravel to the maximum depth explored of approximately 35 feet bgs (Figure 3).

**Groundwater:** Depths to groundwater at the Site typically range from 14 to 21 feet bgs. The groundwater flow direction is to the southeast (Figure 4).

**Water Supply:** Potable water is supplied to the Site and vicinity by Seattle Public Utilities, from reservoirs located in the Cedar and Tolt River Valleys on the western flank of the Cascade Mountains. A review of well log data available from the Washington State Department of Ecology (Ecology) and the United States Geological Survey (USGS) reveals that there are no water wells on or within 2,000 feet of the Property.

### **Extent and Remediation of Contamination**

Site characterization investigations completed from 1991 through 2017 identified the extent of soil and groundwater contamination at the Site and supported multiple remediation activities, as described above in this opinion letter. Six USTs and associated contaminated soil were removed from the Site in June 2018. The extent of the excavation is shown on Figure 5.

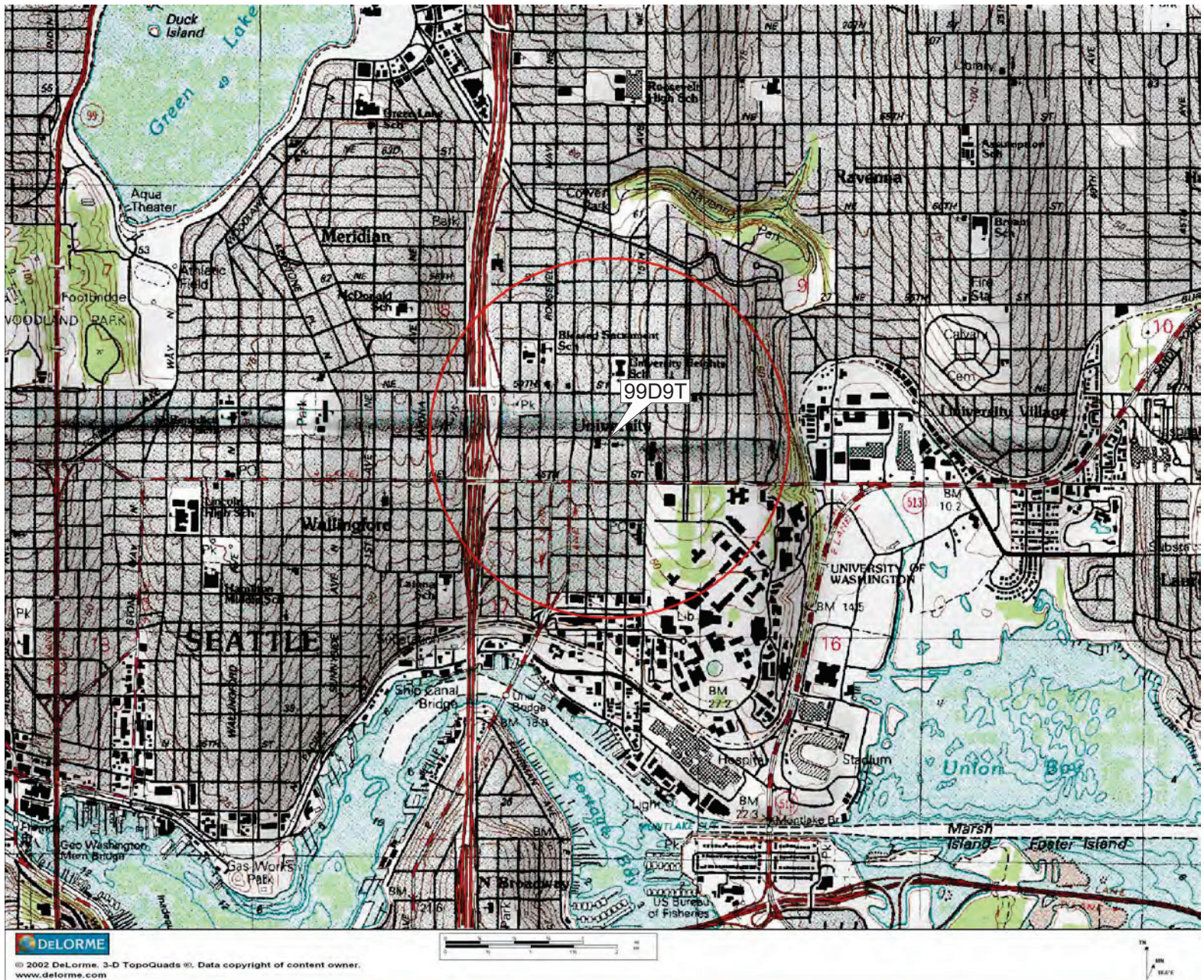
A confirmation soil investigation completed in 2021 documented post-excavation concentrations of contaminants in soil (see Figure 5). All soil concentrations were compliant with 1,500 milligrams per kilogram (mg/kg) direct-contact TPH cleanup levels described above in this opinion letter.

Compliance with groundwater cleanup levels was confirmed by sampling completed from December 2020 through September 2021 (Figures 6 and 7).

## Site Diagrams

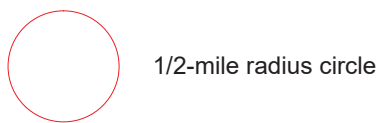
---

# Enclosure A Figure 1

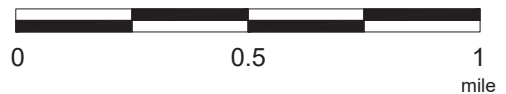


FN 0311620001

## EXPLANATION



## APPROXIMATE SCALE



SOURCE:  
Modified from a map  
provided by  
DeLorme 3-D TopoQuads



## SITE LOCATION MAP

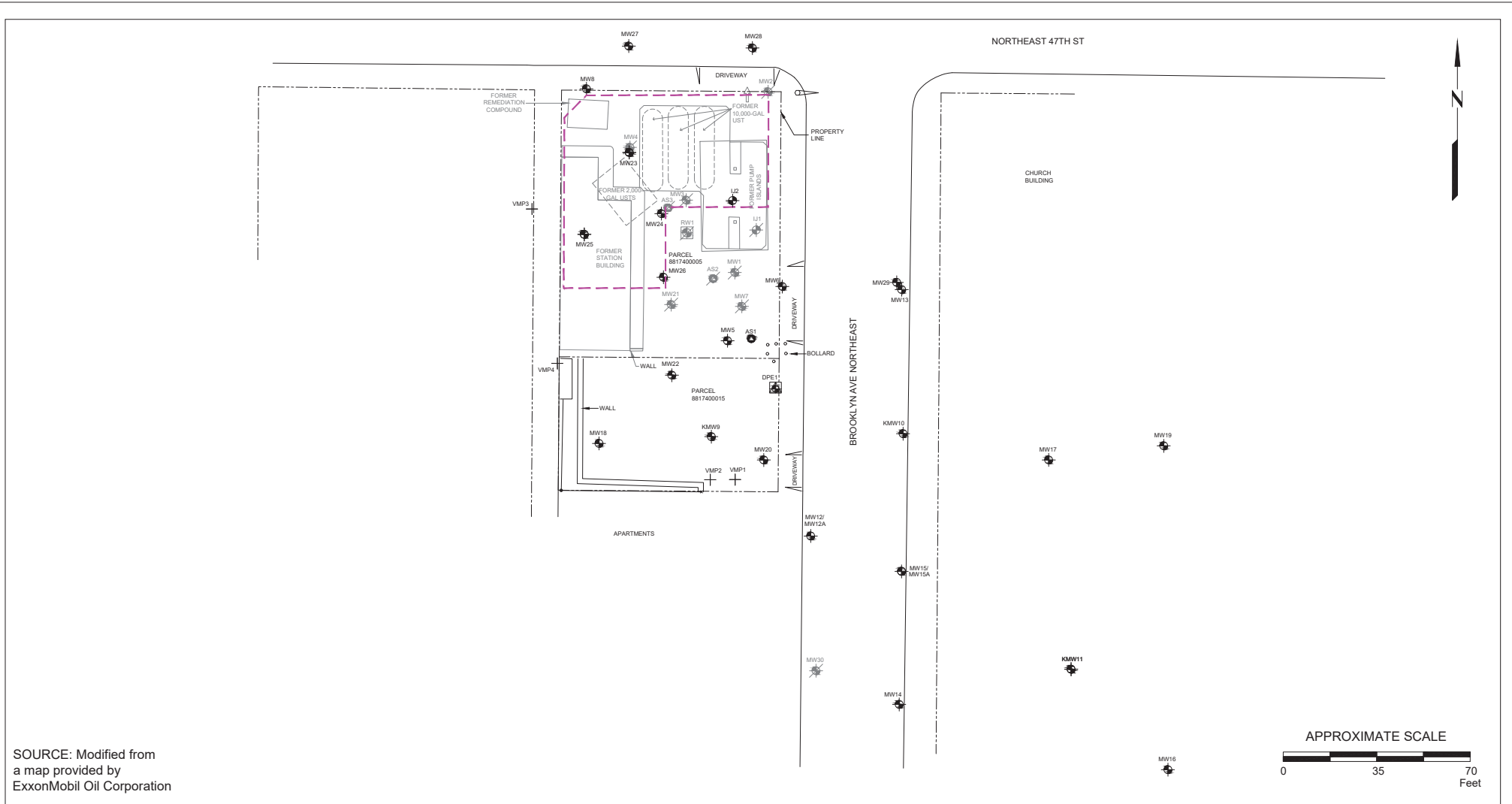
FORMER MOBIL STATION 99D9T  
4557 Brooklyn Avenue Northeast  
Seattle, Washington

PROJECT NO.  
031162

PLATE  
1

LEC: 08/09/18

# Enclosure A Figure 2



SOURCE: Modified from a map provided by ExxonMobil Oil Corporation

FN 031162002

## GENERALIZED SITE PLAN

FORMER MOBIL STATION 99D9T  
4557 Brooklyn Avenue Northeast  
Seattle, Washington

### EXPLANATION

- MW29 Groundwater Monitoring Well
- VMP4 Vapor Monitoring Point
- IJ2 Injection Well
- AS3 Destroyed Air Sparge Well
- AS1 Air Sparge Well
- DPE1 Dual Phase Extraction Well
- MW30 Destroyed Groundwater Monitoring Well
- RW1 Destroyed Recovery Groundwater Monitoring Well
- IJ1 Destroyed Injection Well

### PROJECT NO.

031162

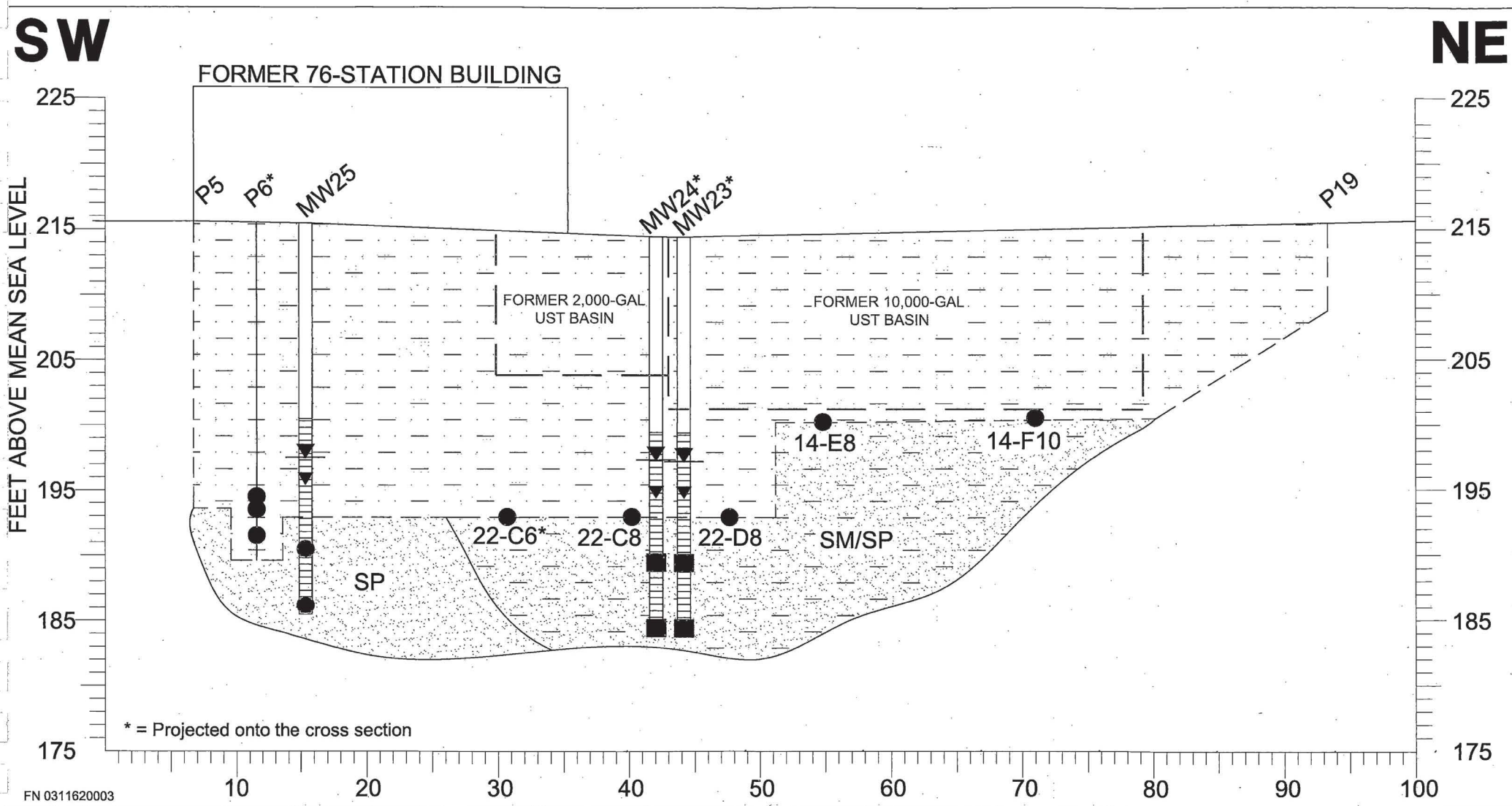
### PLATE

2

LEC: 10/05/21



Enclosure A Figure 3



\* = Projected onto the cross section

FN 0311620003



**POST-EXCAVATION  
CROSS SECTION SW-NE**  
FORMER MOBIL STATION 909D9T  
4557 7Brooklyn Avenue Northeast  
Seattle, Washington

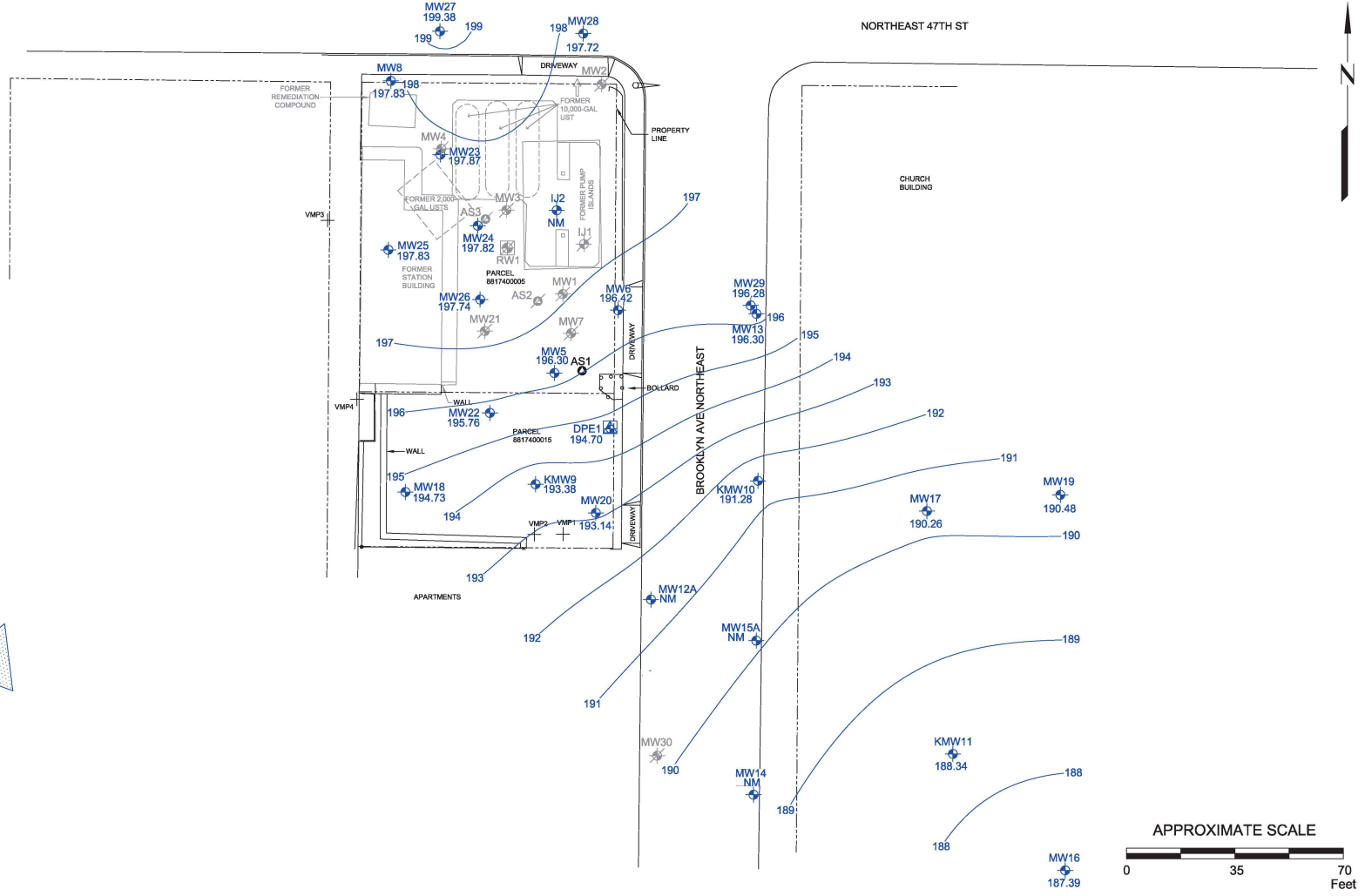
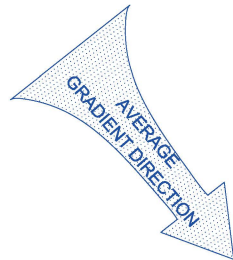
EXPLANATION	
	Poorly Graded Sand (SP)
	Silty Sand - Backfill Material (SM)
	Well Screening Interval
	Groundwater Elevation Encountered During Drilling
	Groundwater Elevation on 09/17/18
	Soil Sample Location
	Excavation Extents
	Concentrations in Soil Less Than the MTCA Method A Cleanup Levels
	Concentrations in soil exceeding the MTCA Method A Cleanup Levels and Removed During Excavation
	Concentrations in soil with field screening PID less than 1.0 ppmv

**PROJECT**  
031162  
**PLATE**  
5  
LEC: 11/21/18

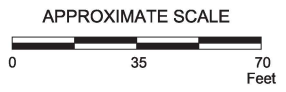
# Enclosure A Figure 4

- Laboratory or Well Symbols in Red Indicate Dissolved Concentrations Which Exceed MTCA Method A Cleanup Levels
- Laboratory Results or Well Symbols in Blue Indicate Dissolved Concentrations Less Than MTCA Method A Cleanup Levels
- Laboratory Results Not Available for Numbers and Well Symbols in Black

Wells MW12A, MW14, MW15A, and LJ2 were inaccessible during initial gauging activities and were gauged prior to sampling. Groundwater elevations were omitted from contouring.



SOURCE: Modified from a map provided by ExxonMobil Oil Corporation



FN 0311620002



## GROUNDWATER ELEVATION CONTOUR MAP - 08/30/21

FORMER MOBIL STATION 99D9T  
4557 Brooklyn Avenue Northeast  
Seattle, Washington

### EXPLANATION

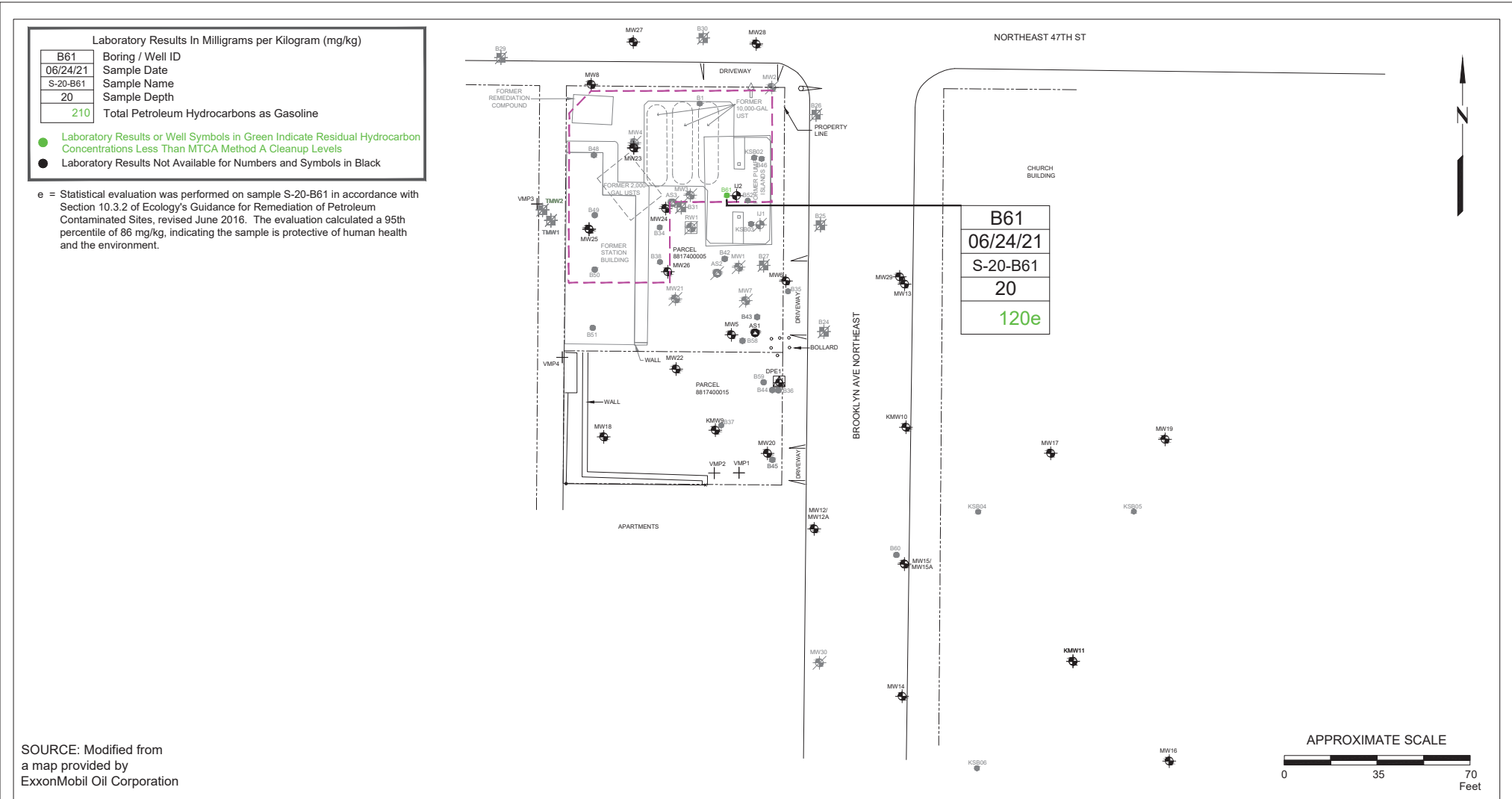
MW29 196.28	Groundwater Monitoring Well	AS1	Air Sparge Well	LJ1	Destroyed Injection Well
NM	Not Monitored	DPE1	Dual Phase Extraction Well	AS3	Destroyed Air Sparge Well
VMP4	Vapor Monitoring Point	MW30	Destroyed Groundwater Monitoring Well	RW1	Destroyed Recovery Groundwater Monitoring Well
LJ2	Injection Well				
					— Groundwater Elevation Contour Line

**PROJECT NO.**  
031162

**PLATE**  
5

**CPA:** 10/27/21

# Enclosure A Figure 5



SOURCE: Modified from a map provided by ExxonMobil Oil Corporation

FN 0311620002



## SOIL SAMPLE ANALYSES MAP - 06/24/21

FORMER MOBIL STATION 99D9T  
4557 Brooklyn Avenue Northeast  
Seattle, Washington

### EXPLANATION

- |  |  |   |
|--|--|---|
| <ul style="list-style-type: none"> <li>MW30  Groundwater Monitoring Well</li> <li>KMW11  Kane Environmental Groundwater Monitoring Well</li> <li>VMP4  Vapor Monitoring Point</li> <li>IJ2  Injection Well</li> <li> 2018 Remedial Excavation Extents</li> </ul> | <ul style="list-style-type: none"> <li>AS1  Air Sparge Well</li> <li>DPE1  Dual Phase Extraction Well</li> <li>B61  Soil Boring</li> <li>B52  Historical Soil Boring</li> <li>MW21  Destroyed Groundwater Monitoring Well</li> </ul> | <ul style="list-style-type: none"> <li>RW1  Destroyed Recovery Groundwater Monitoring Well</li> <li>AS3  Destroyed Air Sparge Well</li> <li>TMW2  Destroyed Temporary Groundwater Monitoring Well</li> <li>AS3  Destroyed Air Sparge Well</li> <li>IJ1  Destroyed Injection Well</li> </ul> |
|--|--|---|

### PROJECT NO.

031162

### PLATE

3

CPA: 09/08/21

# Enclosure A Figure 6

Laboratory Results in µg/L

MW#	Well ID	Sample Date	12/17/20	02/17/21	04/14/21	08/01/21
<100	Total Petroleum Hydrocarbons as Gasoline		<100	<100	<100	<100
320	Total Petroleum Hydrocarbons as Diesel		<91	<94	<98	<91
<93	Total Petroleum Hydrocarbons as Motor Oil		<95	<94	<94	<91
3.9	Benzene	-- = Not Analyzed or Sampled	<0.50	<0.50	<0.50	<0.50
<1.0	Toluene	<0.50 = Less than the Stated Laboratory Reporting Limit	<1.0	<1.0	<1.0	<1.0
<1.0	Ethylbenzene		<1.0	<1.0	<1.0	<1.0
<2.0	Total Xylenes	µg/L = Micrograms per Liter	<2.0	<2.0	<2.0	<2.0
<1.00	Dissolved Lead		<1.00	<1.00	<1.00	<1.00

- Laboratory Results or Well Symbols in Red Indicate Dissolved Concentrations Which Exceed MTCA Method A Cleanup Levels
- Laboratory Results or Well Symbols in Blue Indicate Dissolved Concentrations Less Than MTCA Method A Cleanup Levels
- Laboratory Results Not Available for Numbers and Well Symbols in Black

**MW25**

12/17/20	02/18/21	04/15/21	08/02/21
<100	<100	<100	<100
<95	<94	<94	<91
<95	<94	<94	<91
<0.50	<0.50	<0.50	<0.50
<1.0	<1.0	<1.0	<1.0
<1.0	<1.0	<1.0	<1.0
<2.0	<2.0	<2.0	<2.0
<1.00	<1.00	<1.00	<1.00

**MW26**

12/17/20	02/17/21	04/14/21	08/01/21
<100	<100	<100	<100
<93	<95	<98	<91
<93	<95	<98	<91
<0.50	<0.50	<0.50	<0.50
<1.0	<1.0	<1.0	<1.0
<1.0	<1.0	<1.0	<1.0
<2.0	<2.0	<2.0	<2.0
<1.00	<1.00	<1.00	<1.00

**MW5**

12/16/20	02/18/21	04/14/21	08/01/21
<100	<100	<100	<100
<100	120	<95	<91
<100	<98	97	180
<0.50	<0.50	<0.50	<0.50
<1.0	<1.0	<1.0	<1.0
<1.0	<1.0	<1.0	<1.0
<2.0	<2.0	<2.0	<2.0
<1.00	<1.00	<1.00	<1.00

**MW23**

12/17/20	02/17/21	04/14/21	08/01/21
<100	<100	<100	<100
<91	<94	<98	<91
<91	<94	<98	<91
<0.50	<0.50	<0.50	<0.50
<1.0	<1.0	<1.0	<1.0
<1.0	<1.0	<1.0	<1.0
<2.0	<2.0	<2.0	<2.0
<1.00	<1.00	<1.00	<1.00

**IJ2**

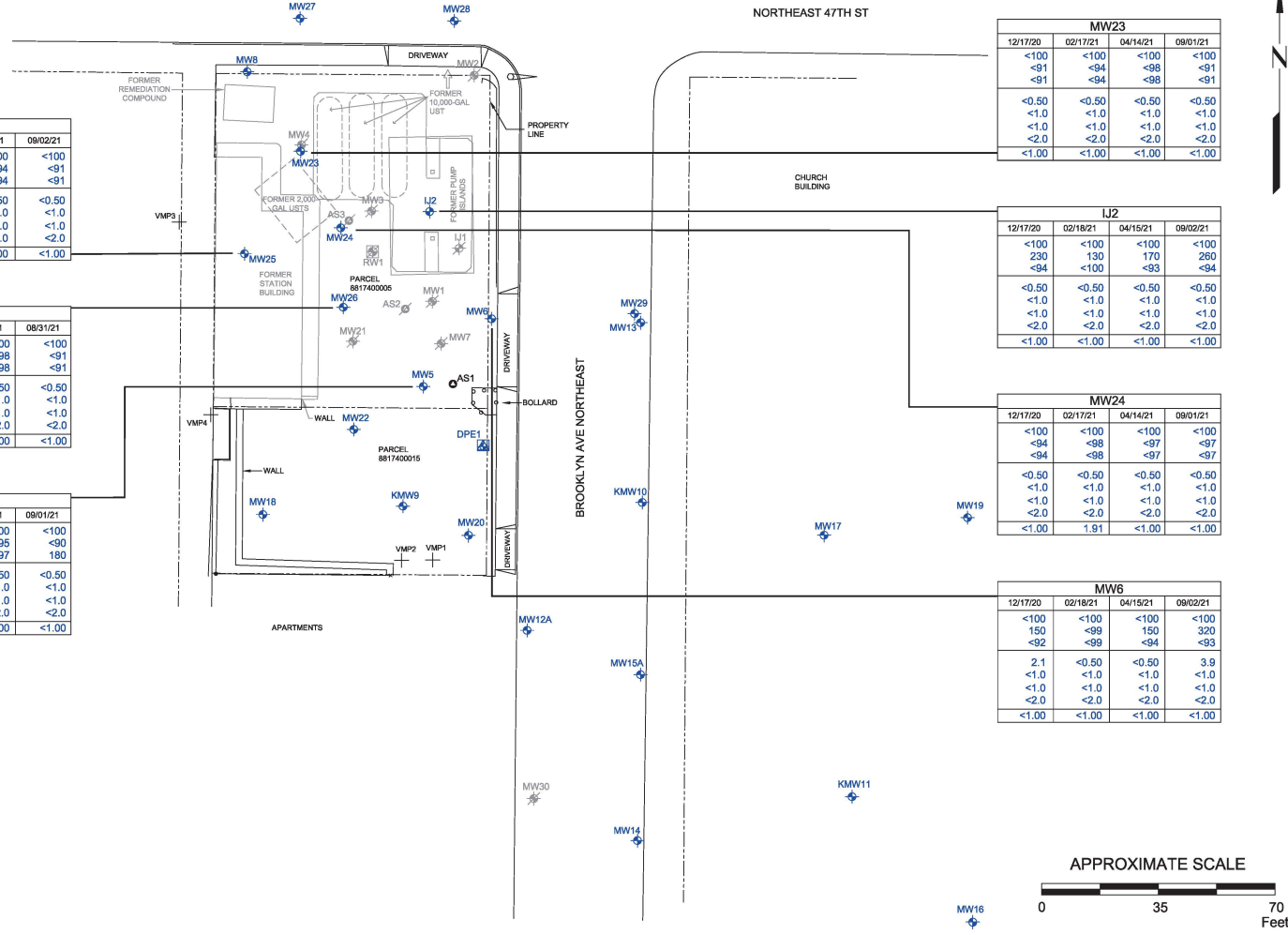
12/17/20	02/18/21	04/15/21	08/02/21
<100	<100	<100	<100
230	130	170	280
<94	<100	<93	<94
<0.50	<0.50	<0.50	<0.50
<1.0	<1.0	<1.0	<1.0
<1.0	<1.0	<1.0	<1.0
<2.0	<2.0	<2.0	<2.0
<1.00	<1.00	<1.00	<1.00

**MW24**

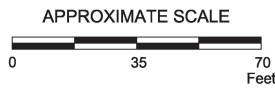
12/17/20	02/17/21	04/14/21	08/01/21
<100	<100	<100	<100
<94	<98	<97	<97
<94	<98	<97	<97
<0.50	<0.50	<0.50	<0.50
<1.0	<1.0	<1.0	<1.0
<1.0	<1.0	<1.0	<1.0
<2.0	<2.0	<2.0	<2.0
<1.00	1.91	<1.00	<1.00

**MW6**

12/17/20	02/18/21	04/15/21	08/02/21
<100	<100	<100	<100
150	<99	150	320
<92	<99	<94	<93
2.1	<0.50	<0.50	3.9
<1.0	<1.0	<1.0	<1.0
<1.0	<1.0	<1.0	<1.0
<2.0	<2.0	<2.0	<2.0
<1.00	<1.00	<1.00	<1.00



SOURCE: Modified from a map provided by ExxonMobil Oil Corporation



FN 0311620002



**STATION PROPERTY GROUNDWATER SAMPLE ANALYSIS MAP - 08/31 - 09/02/21**  
 FORMER MOBIL STATION 99D9T  
 4557 Brooklyn Avenue Northeast  
 Seattle, Washington

**EXPLANATION**

MW29	Groundwater Monitoring Well	AS1	Air Sparge Well	IJ1	Destroyed Injection Well
VMP4	Vapor Monitoring Point	DPE1	Dual Phase Extraction Well		
IJ2	Injection Well	MW21	Destroyed Groundwater Monitoring Well		
RW1	Destroyed Recovery Groundwater Monitoring Well	AS3	Destroyed Air Sparge Well		

**PROJECT NO.**  
031162  
**PLATE**  
3  
**CPA: 10/27/21**

# Enclosure A Figure 7

**Laboratory Results in µg/L**

DPE1	Well ID	Sample Date	Total Petroleum Hydrocarbons as Gasoline	Total Petroleum Hydrocarbons as Diesel	Total Petroleum Hydrocarbons as Motor Oil	Benzene	Toluene	Ethylbenzene	Total Xylenes	Dissolved Lead
<100			140	110						
<0.50			<2.0	<2.0	<4.0	<1.00				

- = Not Analyzed or Sampled  
 <0.50 = Less than the Stated Laboratory Reporting Limit  
 µg/L = Micrograms per Liter

- Laboratory Results or Well Symbols in Red Indicate Dissolved Concentrations Which Exceed MTCA Method A Cleanup Levels
- Laboratory Results or Well Symbols in Blue Indicate Dissolved Concentrations Less Than MTCA Method A Cleanup Levels
- Laboratory Results Not Available for Numbers and Well Symbols in Black

MW27					MW28					MW29					MW13				
12/14/20	02/16/21	04/12/21	08/31/21		12/14/20	02/16/21	04/12/21	08/31/21		12/14/20	02/16/21	04/13/21	08/30/21		12/14/20	02/16/21	04/13/21	08/30/21	
<100	<100	<100	<100		<100	<100	<100	<100		<100	<100	<100	<100		<100	<100	<100	<100	
<98	<95	<94	<97		<94	<94	<94	<95		<99	<99	<99	<92		<96	<93	<93	<91	
<0.50	<0.50	<0.50	<0.50		<0.50	<0.50	<0.50	<0.50		<0.50	<0.50	<0.50	<0.50		<0.50	<0.50	<0.50	<0.50	
<1.0	<1.0	<1.0	<1.0		<1.0	<1.0	<1.0	<1.0		<1.0	<1.0	<1.0	<1.0		<1.0	<1.0	<1.0	<1.0	
<2.0	<2.0	<2.0	<2.0		<2.0	<2.0	<2.0	<2.0		<2.0	<2.0	<2.0	<2.0		<2.0	<2.0	<2.0	<2.0	
<1.00	<1.00	<1.00	<1.00		<1.00	<1.00	<1.00	<1.00		<1.00	<1.00	<1.00	<1.00		<1.00	<1.00	<1.00	<1.00	

MW8				
12/16/20	02/17/21	04/15/21	08/01/21	
<100	<100	<100	<100	
<98	<100	<95	<91	
<98	<100	<95	<91	
<0.50	<0.50	<0.50	<0.50	
<1.0	<1.0	<1.0	<1.0	
<1.0	<1.0	<1.0	<1.0	
<2.0	<2.0	<2.0	<2.0	
<1.00	<1.00	<1.00	<1.00	

MW22				
12/16/20	02/18/21	04/14/21	08/31/21	
<100	<100	<100	<100	
<98	<100	180	150	
<98	<100	<98	<96	
<0.50	<0.50	<0.50	<0.50	
<1.0	<1.0	<1.0	<1.0	
<1.0	<1.0	<1.0	<1.0	
<2.0	<2.0	<2.0	<2.0	
<1.00	<1.00	<1.00	<1.00	

MW18				
12/16/20	02/17/21	04/14/21	08/30/21	
<100	<100	<100	<100	
<94	<96	<96	<91	
<94	<96	<96	<91	
<0.50	<0.50	<0.50	<0.50	
<1.0	<1.0	<1.0	<1.0	
<1.0	<1.0	<1.0	<1.0	
<2.0	<2.0	<2.0	<2.0	
<1.00	<1.00	<1.00	<1.00	

KMW9				
12/16/20	02/18/21	04/14/21	08/30/21	
<100	<100	<100	<100	
<100	<100	110	150	
<100	<100	<97	<94	
<0.50	<0.50	<0.50	<0.50	
<1.0	<1.0	<1.0	<1.0	
<1.0	<1.0	<1.0	<1.0	
<2.0	<2.0	<2.0	<2.0	
<1.00	<1.00	<1.00	<1.00	

MW12A				
12/14/20	02/16/21	04/13/21	08/30/21	
<100	<100	<100	--	
<92	<100	<96	--	
<92	<100	<96	--	
<0.50	<0.50	<0.50	--	
<1.0	<1.0	<1.0	--	
<1.0	<1.0	<1.0	--	
<2.0	<2.0	<2.0	--	
<1.00	<1.00	<1.00	--	

MW15A				
12/17/20	02/18/21	04/12/21	08/31/21	
<100	<100	<100	<100	
<93	<100	<93	<92	
<93	<100	<93	<92	
<0.50	<0.50	<0.50	<0.50	
<1.0	<1.0	<1.0	<1.0	
<1.0	<1.0	<1.0	<1.0	
<2.0	<2.0	<2.0	<2.0	
<1.00	<1.00	<1.00	<1.00	

MW30				
12/14/20	02/16/21	04/13/21	08/31/21	
<100	<100	<100	<100	
<98	<97	<97	<91	
<98	<97	<97	<91	
<0.50	<0.50	<0.50	<0.50	
<1.0	<1.0	<1.0	<1.0	
<1.0	<1.0	<1.0	<1.0	
<2.0	<2.0	<2.0	<2.0	
<1.00	<1.00	<1.00	<1.00	

MW14				
12/15/20	02/16/21	04/12/21	08/31/21	
<100	<100	<100	<100	
<91	<99	<97	<94	
<91	<99	<97	<94	
<0.50	<0.50	<0.50	<0.50	
<1.0	<1.0	<1.0	<1.0	
<1.0	<1.0	<1.0	<1.0	
<2.0	<2.0	<2.0	<2.0	
<1.00	<1.00	<1.00	<1.00	

MW17				
12/15/20	02/17/21	04/13/21	08/02/21	
<100	<100	<100	<100	
<93	<93	<96	<92	
<93	<93	<96	<92	
<0.50	<0.50	<0.50	<0.50	
<1.0	<1.0	<1.0	<1.0	
<1.0	<1.0	<1.0	<1.0	
<2.0	<2.0	<2.0	<2.0	
<1.00	<1.00	<1.00	<1.00	

MW16				
12/15/20	02/17/21	04/16/21	08/01/21	
<100	<100	<100	<100	
<95	<99	<94	<91	
<95	<99	<94	<91	
<0.50	<0.50	<0.50	<0.50	
<1.0	<1.0	<1.0	<1.0	
<1.0	<1.0	<1.0	<1.0	
<2.0	<2.0	<2.0	<2.0	
<1.00	<1.00	<1.00	<1.00	

DPE1				
12/16/20	02/17/21	04/14/21	08/01/21	
<100	<100	<100	<100	
<100	<100	<92	140	
<100	<100	<92	110	
<0.50	<0.50	<0.50	<1.0	
<1.0	<1.0	<1.0	<2.0	
<1.0	<1.0	<1.0	<2.0	
<2.0	<2.0	<2.0	<4.0	
<1.00	<1.00	<1.00	<1.00	

KMW10				
12/15/20	02/18/21	04/13/21	08/30/21	
<100	<100	<95	<100	
<93	<100	<95	<91	
<93	<100	<95	<91	
<0.50	<0.50	<0.50	<0.50	
<1.0	<1.0	<1.0	<1.0	
<1.0	<1.0	<1.0	<1.0	
<2.0	<2.0	<2.0	<2.0	
<1.00	<1.00	<1.00	<1.00	

MW20				
12/16/20	02/18/21	04/14/21	08/31/21	
<100	<100	<100	<100	
<92	<97	100	130	
<92	<97	<96	<95	
<0.50	<0.50	<0.50	<0.50	
<1.0	<1.0	<1.0	<1.0	
<1.0	<1.0	<1.0	<1.0	
<2.0	<2.0	<2.0	<2.0	
<1.00	<1.00	<1.00	<1.00	

MW19				
12/15/20	02/18/21	04/13/21	08/01/21	
<100	<100	<100	<100	
<93	<98	<94	<94	
<93	<98	<94	<94	
<0.50	<0.50	<0.50	<0.50	
<1.0	<1.0	<1.0	<1.0	
<1.0	<1.0	<1.0	<1.0	
<2.0	<2.0	<2.0	<2.0	
<1.00	<1.00	<1.00	<1.00	

KMW11				
12/16/20	02/18/21	04/15/20	08/02/20	
<100	--	<100	<100	
<98	--	<98	<91	
<98	--	<98	<91	
<0.50	--	<0.50	<0.50	
<1.0	--	<1.0	<1.0	
<1.0	--	<1.0	<1.0	
<2.0	--	<2.0	<2.0	
<1.00	--	<1.00	<1.00	

SOURCE: Modified from a map provided by ExxonMobil Oil Corporation

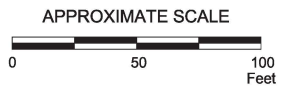
FN 0311620002

**OFF-STATION PROPERTY  
GROUNDWATER SAMPLE  
ANALYSIS MAP - 08/30 - 09/02/21**  
FORMER MOBIL STATION 99D9T  
4557 Brooklyn Avenue Northeast  
Seattle, Washington



- EXPLANATION**
- MW30 Groundwater Monitoring Well
  - VMP4 Vapor Monitoring Point
  - IJ2 Injection Well
  - RW1 Destroyed Recovery Groundwater Monitoring Well
  - AS1 Air Sparge Well
  - DPE1 Dual Phase Extraction Well
  - MW21 Destroyed Groundwater Monitoring Well
  - IJ1 Destroyed Injection Well
  - AS3 Destroyed Air Sparge Well

**PROJECT NO.**  
031162  
**PLATE**  
4  
**PEP: 10/28/21**



## Enclosure B

---

### Basis for the Opinion: List of Documents

1. Cardno, *Groundwater Monitoring Report, Third Quarter 2021, Former Mobil Station 99D9T, 4557 Brooklyn Avenue NE, Seattle, Washington, VCP No. NW2347*; October 28, 2021.
2. Cardno, *Confirmation Boring and Statistical Evaluation Report, Former Mobil Station 99D9T, 4557 Brooklyn Avenue NE, Seattle, Washington*; October 1, 2021.
3. Cardno, *Request for No Further Action-Likely Determination, Former Mobil Station 99D9T, 4557 Brooklyn Avenue NE, Seattle, Washington, VCP No. NW2347*; April 16, 2021.
4. Cardno, *Confirmation Assessment Report, Former Mobil Station 99D9T, 4557 Brooklyn Avenue NE, Seattle, Washington*; July 20, 2020.
5. Cardno, *Confirmation Assessment Work Plan, Former Mobil Station 99D9T, 4557 Brooklyn Avenue NE, Seattle, Washington*; November 11, 2019.
6. Cardno, *Quarterly Groundwater Monitoring Reports, Former Mobil Station 99D9T, 4557 Brooklyn Avenue NE, Seattle, Washington*; 2019 through 2021.
7. Cardno, *Corrective Action Report, Former Mobil Station 99D9T, 4557 Brooklyn Avenue NE, Seattle, Washington*; March 29, 2019.
8. Frank W. Pita Consulting, LLC, *Special Inspection Report, 4557 Brooklyn Avenue Northeast, Seattle, Washington*; September 14, 2018.
9. Cardno, *Well Decommissioning Report, Former Mobil Station 99D9T, 4557 Brooklyn Avenue NE, Seattle, Washington*; September 10, 2018.
10. Otto Rosenau & Associates, Inc., *Geotechnical Inspection Report, Porous Asphalt Infiltration Testing, 4557 Brooklyn Avenue Northeast, Seattle, Washington*; September 7, 2018.
11. SoundEarth Strategies, *Underground Storage Tanks Site Assessment Summary Report, Erickson Property, 4557 Brooklyn Avenue Northeast, Seattle, Washington*; July 30, 2018.
12. McMillen Jacobs Associates, *Vibration Monitoring at ExxonMobil Site in Seattle, WA*; July 9, 2018.
13. Cardno, *30-Day Tank Closure Notice, Former Mobil Station 99D9T, 4557 Brooklyn Avenue NE, Seattle, Washington*; March 26, 2018.
14. Cardno, *Well Decommissioning Report, Former Mobil Station 99D9T, 4557 Brooklyn Avenue NE, Seattle, Washington*; January 26, 2018.
15. Cardno, *In-Situ Chemical Oxidation Injection Memorandum, Former Mobil Station 99D9T, 4557 Brooklyn Avenue NE, Seattle, Washington*; October 31, 2017.
16. Cardno, *Confirmation Boring Report, Former Mobil Station 99D9T, 4557 Brooklyn Avenue NE, Seattle, Washington*; September 14, 2017.

17. Cardno, *Groundwater Monitoring Report, Third Quarter 2017, Former Mobil Station 99D9T, 4557 Brooklyn Avenue NE, Seattle, Washington*; September 12, 2017.
18. Cardno, *Remedial Action Plan, Former Station 99D9T, 4557 Brooklyn Avenue Northeast, Seattle, Washington*; June 13, 2017.
19. Cardno, *Well Redevelopment Memorandum, Former Mobil Station 99D9T, 4557 Brooklyn Avenue NE, Seattle, Washington*; March 15, 2017.
20. ATC, *Limited Asbestos and Lead-Containing Paint Survey, Demolition Project, 76 Gas Station, 4557 Brooklyn Avenue Northeast, Seattle, Washington*; March 10, 2017.
21. Cardno, *In-Situ Chemical Oxidation Injection Memorandum, Former Mobil Station 99D9T, 4557 Brooklyn Avenue NE, Seattle, Washington*; January 26, 2017.
22. Cardno, *RW1 Well Rehabilitation and Test Injection Memorandum, Former Mobil Station 99D9T, 4557 Brooklyn Avenue NE, Seattle, Washington*; November 18, 2016.
23. Cardno, *Revised MW5 Pumping Test Memorandum, Former Mobil Station 99D9T, 4557 Brooklyn Avenue NE, Seattle, Washington*; November 16, 2016.
24. Cardno, *Work Plan for In-Situ Chemical Oxidation, Former Mobil Station 99D9T, 4557 Brooklyn Avenue NE, Seattle, Washington*; November 11, 2016.
25. Cardno, *MW5 Pumping Test Memorandum, Former Mobil Station 99D9T, 4557 Brooklyn Avenue NE, Seattle, Washington*; May 27, 2016.
26. Cardno, *Underground Injection Control (UIC) Registration Form, Former Mobil Station 99D9T, 4557 Brooklyn Avenue NE, Seattle, Washington*; March 2, 2016.
27. Cardno, *Assessment of Current Soil Conditions, Former Mobil Station 99D9T, 4557 Brooklyn Avenue NE, Seattle, Washington*; August 25, 2015.
28. Cardno ERI, *Revised Work Plan to Assess Current Soil Conditions, Former Mobil Station 99D9T, 4557 Brooklyn Avenue NE, Seattle, Washington*; May 19, 2015.
29. Cardno ERI, *Work Plan to Assess Current Soil Conditions, Former Mobil Station 99D9T, 4557 Brooklyn Avenue NE, Seattle, Washington*; May 4, 2015.
30. Cardno ERI, *Groundwater Monitoring and Remedial Status Report, Former Mobil Station 99D9T, 4557 Brooklyn Avenue NE, Seattle, Washington*; September 17, 2014.
31. Cardno ERI, *Work Plan for Remedial System Expansion, Former Mobil Station 99D9T, 4557 Brooklyn Avenue NE, Seattle, Washington*; July 16, 2013.
32. Department of Ecology, *Opinion on Proposed Cleanup of a Property Associated with a Site, Erickson Property/BP Station Brooklyn, VCP NW2347*; May 29, 2013.
33. SoundEarth Strategies, Inc., *Request for Technical Opinion, Erickson Property, 4557 Brooklyn Avenue NE, Seattle, Washington, VCP Project No. NW 2347*; February 7, 2013.

34. Cardno ERI, *Groundwater Monitoring and Remedial Status Report, Former Mobil Station 99D9T, 4557 Brooklyn Avenue NE, Seattle, Washington*; January 8, 2013.
35. SoundEarth Strategies, Inc., *Response Report to Ecology Request for Information on Status of VCP Project, Erickson Property, 4557 Brooklyn Avenue NE, Seattle, Washington, VCP Project No. NW2347*; November 27, 2012.
36. Cardno ERI, *Subsurface Investigation Report, Former Mobil Station 99D9T, 4557 Brooklyn Avenue NE, Seattle, Washington*; October 29, 2012.
37. Cardno ERI, *Groundwater Monitoring and Remedial Status Report, Former Mobil Station 99D9T, 4557 Brooklyn Avenue NE, Seattle, Washington*; June 22, 2012.
38. Cardno ERI, *Groundwater Monitoring and Remedial Status Report, Former Mobil Station 99D9T, 4557 Brooklyn Avenue NE, Seattle, Washington*; April 9, 2012.
39. Cardno ERI, *Site Status and Remedial Progress, Former Mobil Station 99D9T, 4557 Brooklyn Avenue NE, Seattle, Washington*; March 7, 2012.
40. Cardno ERI, *Groundwater Monitoring and Remedial Status Report, Former Mobil Station 99D9T; 4557 Brooklyn Avenue NE, Seattle, Washington*; January 17, 2011.
41. Cardno ERI, *Groundwater Monitoring and Remedial Status Report, Former Mobil Station 99D9T; 4557 Brooklyn Avenue NE, Seattle, Washington*; November 14, 2011.
42. Department of Ecology, *Further Action Opinion Letter, Erickson Property/BP Station Brooklyn, VCP NW2347*; September 16, 2011.
43. Cardno ERI, *Groundwater Monitoring and Remedial Status Report, Former Mobil Station 99D9T; 4557 Brooklyn Avenue NE, Seattle, Washington*; August 15, 2011.
44. Cardno ERI, *Groundwater Monitoring and Remedial Status Report, Former Mobil Station 99D9T; 4557 Brooklyn Avenue NE, Seattle, Washington*; June 13, 2011.
45. Cardno ERI, *Groundwater Monitoring and Remedial Status Report, Former Mobil Station 99D9T; 4557 Brooklyn Avenue NE, Seattle, Washington*; February 4, 2011.
46. Cardno ERI, *Groundwater Monitoring and Remedial Status Report, Former Mobil Station 99D9T, 4557 Brooklyn Avenue NE, Seattle, Washington*; November 24, 2010.
47. Environmental Resolutions, Inc. (ERI), *Monitoring Well Overdrill and Reinstallation Report, Former Mobil Station 99D9T; 4557 Brooklyn Avenue NE, Seattle, Washington*; August 26, 2010.
48. ERI, *Groundwater Monitoring and Remedial Status Report, Former Mobil Station 99D9T, 4557 Brooklyn Avenue NE, Seattle, Washington*; August 26, 2010.
49. ERI, *Groundwater Monitoring and Remedial Status Report, Former Mobil Station 99D9T; 4557 Brooklyn Avenue NE, Seattle, Washington*; June 3, 2010.
50. ERI, *Groundwater Monitoring Report, Former Mobil Station 99D9T, 4557 Brooklyn Avenue NE, Seattle, Washington*; June 19, 2009.

51. ERI, *Groundwater Monitoring Report, Former Mobil Station 99D9T; 4557 Brooklyn Avenue NE, Seattle, Washington; April 8, 2009.*
52. ERI, *Groundwater Monitoring Report, Former Mobil Station 99D9T, 4557 Brooklyn Avenue NE, Seattle, Washington; January 2, 2009.*
53. ERI, *Groundwater Monitoring Report, Former Mobil Station 99D9T, 4557 Brooklyn Avenue NE, Seattle, Washington; July 8, 2008.*
54. ERI, *Groundwater Monitoring Report, Former Mobil Station 99D9T, 4557 Brooklyn Avenue NE, Seattle, Washington; January 23, 2008.*
55. ERI, *Notification of Trenching and Drilling Activities, Erickson Property, 4557 Brooklyn Avenue NE, Seattle, Washington; July 9, 2008.*
56. ERI, *Monitoring Well Installation Report, Former Mobil Station 99D9T, 4557 Brooklyn Avenue NE, Seattle, Washington; September 17, 2008.*
57. ERI, *Work Plan for Groundwater Extraction System Installation, Former Mobil Station 99-D9T, 4557 Brooklyn Avenue Northeast, Seattle, Washington; March 11, 2008.*
58. ERI, *Groundwater Monitoring Well Installation, Former Mobil Station 99D9T, 4557 Brooklyn Avenue NE, Seattle, Washington; May 23, 2007.*
59. ERI, *Groundwater Monitoring Report, Former Mobil Station 99D9T, 4557 Brooklyn Avenue NE, Seattle, Washington; December 6, 2006.*
60. ERI, *Groundwater Monitoring Well and Vapor Monitoring Point Installation, Former Mobil Station 99-D9T, 4557 Brooklyn Avenue NE, Seattle, Washington; October 4, 2006.*
61. ERI, *Groundwater Monitoring Well Installation Reports, Former Mobil Station 99-D9T, 4557 Brooklyn Avenue NE, Seattle, Washington; 2005 through 2006.*
62. ERI, *ExxonMobil Corporation Groundwater Monitoring Reports, 4557 Brooklyn Avenue NE, Seattle, Washington; 2001 through 2007.*
63. ERI, *Air Sparge and Dual Phase Extraction Well Installation, 4557 Brooklyn Avenue NE, Seattle, Washington; December 12, 2003.*
64. ERI, *Quarterly Groundwater Monitoring Reports, 4557 Brooklyn Avenue NE, Seattle, Washington; 2001 through 2003.*
65. ERI, *Access Agreement to Perform Quarterly Sampling of the Monitoring Wells, Erickson Property, 4557 Brooklyn Avenue NE, Seattle, Washington; May 22, 2001.*
66. Kleinfelder, Inc. (Kleinfelder), *First Quarter 2000 Remediation System Report, 4557 Brooklyn Avenue NE, Seattle, Washington; May 25, 2000.*
67. Kleinfelder, *Third Quarter 1999 Remediation System Report, 4557 Brooklyn Avenue NE, Seattle, Washington; October 9, 1999.*

68. Kleinfelder, *First Quarter 1999 Remediation System Report, 4557 Brooklyn Avenue NE, Seattle, Washington*; April 15, 1999.
69. Kleinfelder, *Fourth Quarter 1998 Remediation System Report, 4557 Brooklyn Avenue NE, Seattle, Washington*; February 3, 1999.
70. Kleinfelder, *Third Quarter 1998 Remediation System Report, 4557 Brooklyn Avenue NE, Seattle, Washington*; October 14, 1998.
71. Kleinfelder, *1997 Groundwater Quality Annual Evaluation of the Former Mobil Service Station #99-D9T, 4557 Brooklyn Avenue NE, Seattle, Washington*; March 9, 1998.
72. Kleinfelder, *Additional Subsurface Exploration, Former Mobil Service Station #99-D9T, 4557 Brooklyn Avenue NE, Seattle, Washington*; March 5, 1996.
73. Kleinfelder, *Vapor Extraction Testing Report, Former Mobil Service Station #99-D9T, 4557 Brooklyn Avenue NE, Seattle, Washington*; August 28, 1995.
74. Kleinfelder, *Subsurface Exploration Report, Former Mobil Service Station #99-D9T, 4557 Brooklyn Avenue NE, Seattle, Washington*; June 7, 1995.
75. Kleinfelder, *Aquifer Pump Test Report, Mobil Station #99-D9T, 4557 Brooklyn Avenue NE, Seattle, Washington*; February 27, 1995.
76. Kleinfelder, *Remedial Workplan, Mobil Station #99-D9T, 4557 Brooklyn Avenue NE, Seattle, Washington*; August 2, 1994.
77. AGI Technologies, *Remedial Activities Summary, 4557 Brooklyn Avenue NE, Seattle, Washington*; May 5, 1994.
78. SEACOR, *Supplemental Soil and Groundwater Investigation, 4557 Brooklyn Avenue NE, Seattle, Washington*; June 9, 1992.
79. SEACOR, *Results of Soil Vapor Survey, 4557 Brooklyn Avenue NE, Seattle, Washington*; March 2, 1992.
80. SEACOR, *Soil and Groundwater Investigation, 4557 Brooklyn Avenue NE, Seattle, Washington*; September 23, 1991.