



Public Participation Plan

**A Avenue Landfill Site
A Avenue and 37th Street
Anacortes, WA**

Toxics Cleanup Program

Washington State Department of Ecology

Northwest Region Office

Shoreline, Washington

June 2024



Publication Information

This document is available on the Department of Ecology's website at:

<https://apps.ecology.wa.gov/cleanupsearch/site/1771>

Cover photo credit

- A Avenue Landfill next to gravel road (2010)

Related Information

- Cleanup site ID: 1771
- Facility site ID: 3094179

Contact Information

Toxics Cleanup Program

Northwest Region Office

Ian Fawley

Outreach Planner

(425) 324-5901, Ian.Fawley@ecy.wa.gov

Ryan Gardiner

Site Manager

(425) 681-5543, Ryan.Gardiner@ecy.wa.gov

15700 Dayton Ave N.

Shoreline, WA 98133

Phone: (206) 594-0000

Website¹: [Washington State Department of Ecology](http://www.ecology.wa.gov)

ADA Accessibility

The Department of Ecology is committed to providing people with disabilities access to information and services by meeting or exceeding the requirements of the Americans with Disabilities Act (ADA), Section 504 and 508 of the Rehabilitation Act, and Washington State Policy #188. To request an ADA accommodation, contact Ecology by phone at 360-407-6831 or email at ecyadacoordinator@ecy.wa.gov. For Washington Relay Service or TTY call 711 or 877-833-6341. Visit Ecology's website for more information.

¹ www.ecology.wa.gov/contact

Department of Ecology's Region Offices

Map of Counties Served



Southwest Region 360-407-6300	Northwest Region 206-594-0000	Central Region 509-575-2490	Eastern Region 509-329-3400
---	---	---------------------------------------	---------------------------------------

Region	Counties served	Mailing Address	Phone
Southwest	Clallam, Clark, Cowlitz, Grays Harbor, Jefferson, Mason, Lewis, Pacific, Pierce, Skamania, Thurston, Wahkiakum	PO Box 47775 Olympia, WA 98504	360-407-6300
Northwest	Island, King, Kitsap, San Juan, Skagit, Snohomish, Whatcom	PO Box 330316 Shoreline, WA 98133	206-594-0000
Central	Benton, Chelan, Douglas, Kittitas, Klickitat, Okanogan, Yakima	1250 W Alder St Union Gap, WA 98903	509-575-2490
Eastern	Adams, Asotin, Columbia, Ferry, Franklin, Garfield, Grant, Lincoln, Pend Oreille, Spokane, Stevens, Walla Walla, Whitman	4601 N Monroe Spokane, WA 99205	509-329-3400
Headquarters	Across Washington	PO Box 46700 Olympia, WA 98504	360-407-6000

Public Participation Plan

**A Avenue Landfill Site
A Avenue and 37th Street, Anacortes, WA**

Toxics Cleanup Program
Washington State Department of Ecology
Northwest Region Office
Shoreline, WA

June 2024



DEPARTMENT OF
ECOLOGY
State of Washington

Table of Contents

List of Figures	5
Figures.....	5
Public Involvement in Contamination Cleanup	6
Site contacts.....	6
Public Participation Grants	6
Washington’s Cleanup Laws	7
Model Toxics Control Act.....	7
State Environmental Policy Act.....	7
Site Information	9
Site background	9
Cleanup plans.....	9
Contamination	9
Site overview	10
Landfill operations and use.....	11
Landfill closure, monitoring, and maintenance	11
Renewed site concern.....	11
Area community	12
Environmental Justice.....	13
Public Participation Activities	16
How we share information with the community.....	16
How to share information with us	18
Americans with Disabilities Act.....	19
Plan Amendments	19
Appendices	20
Appendix A. MTCA Cleanup Process	20
Appendix B. EPA EJScreen Community Report	20

List of Figures

Figures

Figure 1: Steps in Washington's Cleanup Process (See also Appendix A)	8
Figure 2: Aerial view of A Avenue Landfill site.....	9
Figure 3: A Avenue Landfill overview map	10
Figure 4: Closed landfill behind fencing.....	11
Figure 5: Uncovered landfill debris.....	11
Figure 6: Aerial photos of landfill from 2006 vs. 2019.....	12
Figure 7: Washington Environmental Health Disparities Map for A Avenue Landfill site	14
Figure 8: EPA EJScreen generated map of the outreach impact area for the A Avenue Landfill site	15

Public Involvement in Contamination Cleanup

The Washington State Department of Ecology (Ecology) developed this public participation plan (plan) in cooperation with the City of Anacortes, the party responsible for the cleanup of the A Avenue Landfill Site (Site). The purpose of the plan is to promote meaningful community involvement during cleanup.

The plan describes ways Ecology will inform the public about contamination investigations and cleanup options throughout the cleanup process of the Site. Ecology encourages the public to learn about and get involved in decision-making opportunities. This plan identifies how and when the public can get involved during different stages of the investigation and cleanup of contamination.

Site contacts

To be included in the site record, comments about the cleanup process must be submitted during comment periods. Questions and informal comments or information about the Site's history are welcome anytime.

Toxics Cleanup Program

Northwest Region Office
15700 Dayton Ave N
Shoreline, WA 98133

Ryan Gardiner, Site Manager
Ryan.Gardiner@ecy.wa.gov
(425) 681-5543

Ian Fawley, Outreach Planner
ian.fawley@ecy.wa.gov
(425) 324-5901

Potentially Liable Persons

City of Anacortes
904 6th Street
Anacortes, WA 98221

Andrew Rheume, Public Works Director
andrewr@cityofanacortes.org
(360) 299-1954

Public Participation Grants

Grants may be available to neighborhood committees, non-profits, and other groups interested in the site. For contaminated sites, these funds can be used to:

- Hire an expert to help interpret technical information²
- Conduct activities that enhance the public's understanding of, and participation in, the cleanup process

For more information about public participation grants, please contact Laura Busby at 360-280-5088 or laura.busby@ecy.wa.gov and Jill Krumlauf at 360-790-5771 or jill.krumlauf@ecy.wa.gov. You may also visit the [Public Participation Grant website](#).³

² Ecology currently does not have a citizen technical advisor for providing technical assistance to citizens on issues related to the investigation and cleanup of the site.

³ ecology.wa.gov/About-us/How-we-operate/Grants-loans/Find-a-grant-or-loan/Public-participation-grants

Washington's Cleanup Laws

Ecology uses the Model Toxics Control Act (MTCA) and accompanying regulations for cleanup activities.

This plan is required under MTCA, a law that passed in 1989. MTCA provides guidelines for contaminated site cleanup in Washington State and sets standards to ensure the cleanup protects human health and the environment.

Model Toxics Control Act

MTCA began as a grassroots citizen's initiative in 1988 and started the process of systematically cleaning up contaminated sites in Washington. Under MTCA, a current or past property owner or operator may be held responsible for cleaning up contamination on, or coming from, their property to standards that are safe for human health and the environment.

Ecology enacts [MTCA](#)⁴ and oversees cleanups in the state and issues regulations and guidance governing those cleanups. The regulations are found in [Chapter 173-340 Washington Administrative Code \(WAC\)](#).⁵ Ecology investigates reports of property contamination, and if the contamination is seen as a significant threat to human health or the environment, the contaminated property is placed on the [Contaminated Sites List](#)⁶, and the cleanup process begins.

Public participation is an important part of cleanup under the MTCA process. Participation needs are assessed at each cleanup site according to the level of public interest and the degree of risk posed by the contamination. Individuals who live near the site, community groups, businesses, government, other organizations, and interested parties have the opportunity to get involved by commenting on the cleanup process.

Under the MTCA, the cleanup process generally includes multiple steps (see Figure 1 and Appendix A), with opportunities for the public to review and comment on cleanup documents. In addition, a partial cleanup (called an interim action) can occur at any time during the cleanup process. The public is provided an opportunity to review and comment on planned interim action work as well.

State Environmental Policy Act

MTCA cleanups also require evaluation under the State Environmental Policy Act (SEPA; [Chapter 197-11 WAC](#)⁷). Under SEPA, the potential for significant adverse environmental impacts from a project or action must be evaluated by state and local agencies when making decisions. This evaluation is subject to public review and comment in parallel with cleanup documents.

⁴ <https://www.ecology.wa.gov/mtca>

⁵ <https://apps.ecology.wa.gov/publications/publications/9406.pdf>

⁶ <https://apps.ecology.wa.gov/cleanupsearch/reports/cleanup/contaminated>

⁷ <https://apps.leg.wa.gov/wac/default.aspx?cite=197-11>

Washington's Cleanup Process

Public participation plans and comment periods are only required for cleanups under a legal agreement with Ecology. Otherwise, all cleanups follow the same steps. The steps are defined by Washington's cleanup law, the Model Toxics Control Act.



January 2024 | publication 19-09-166

Figure 1: Steps in Washington's Cleanup Process⁸ (See also Appendix A)

⁸ <https://apps.ecology.wa.gov/publications/SummaryPages/1909166.html>

Site Information

Site background

The A Avenue Landfill Site is generally located in the vicinity of A Avenue and 37th Street in Anacortes, WA. The City of Anacortes owns the approximately 6-acre property (Property) within the Anacortes Community Forest Lands (ACFL). The former landfill is managed by the Anacortes City Parks and Recreation Department in coordination with the Skagit County Public Health Department (SCPH). Access to the main portion of the Property is currently restricted.



Figure 2: Aerial view of A Avenue Landfill site

The City has worked with SCPH and Ecology since 2003 to properly close the former landfill and perform routine post-closure monitoring and maintenance.

Cleanup plans

In 2024, Ecology negotiated a legal agreement (Agreed Order) for public review that requires the City to investigate environmental conditions, complete a Remedial Investigation, and if necessary after completion of the investigation, complete a Feasibility Study and a draft Cleanup Action Plan. Each of these steps will require a public comment period.

Contamination

Soil and groundwater seep sampling has been performed at the Site. Petroleum contamination was identified in a shallow soil sample during the SCPH's 2003 Initial Investigation. Additional contaminants, including polycyclic aromatic hydrocarbons, may be present in soil and groundwater based on the available Site history.

Site overview

The former landfill extends approximately 6 acres northwest from a gravel road. A fence runs parallel to the gravel road. Surface debris extends west of the former landfill footprint in a vegetated area. Concrete drying beds formerly used to dry out sewage sludge are located east of the former landfill. SCPH's two groundwater seep sampling locations are located downgradient of the former landfill (see figure below). Forested wetlands are present along the western perimeter of the former landfill.

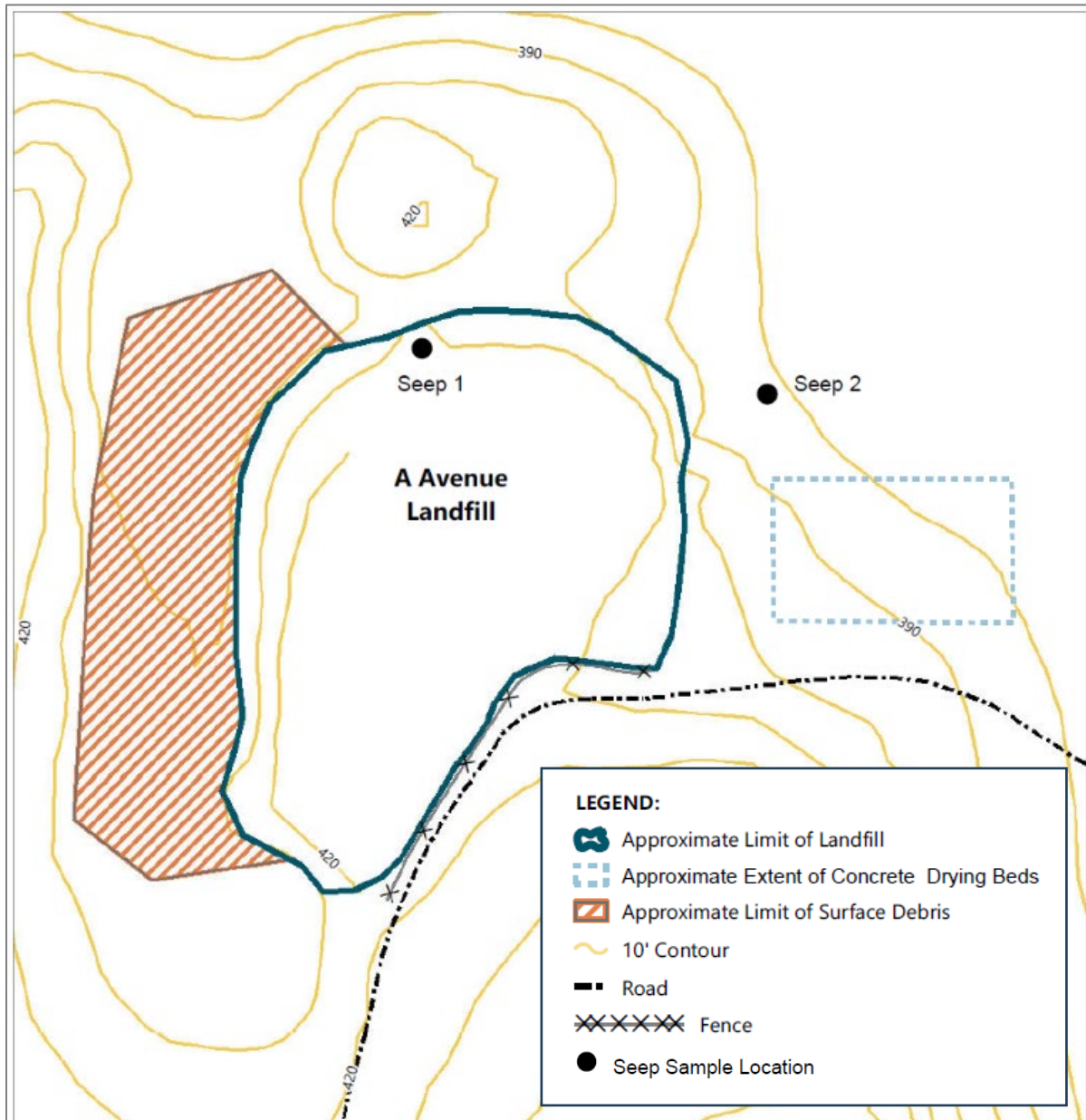


Figure 3: A Avenue Landfill overview map

Landfill operations and use

The A Avenue Landfill was constructed in the 1940s and operated as an unpermitted solid waste landfill through the 1960s. From the 1960s to approximately 1970, the landfill accepted municipal solid waste that was burned on-site. From the 1970s to 2006, the City of Anacortes used the landfill for storage and disposal of public works materials (concrete, yard waste, scrap metal, street sweepings, etc.).

Landfill closure, monitoring, and maintenance

From 2003-2006, prior to closure, SCPH conducted an Initial Investigation of the Site, and Ecology placed it on the “Confirmed and Suspected Contaminated Sites List.” In 2008, SPCH’s landfill closure actions were completed including placing a clean soil cap, creating stormwater controls, and installing fencing, vegetation and signage.



Figure 4: Closed landfill behind fencing

In 2009, SCPH conducted a Site Hazard Assessment, and Ecology issued a No Further Action determination. From 2010-2020, SCPH performed routine monitoring and maintenance under a 10-year post-closure plan including maintaining a soil cap and grass cover over the landfill, maintaining public safety measures including fencing and signage, and testing of groundwater seeps from the former landfill perimeter.

Renewed site concern

In August 2019, community members sent a letter to SCPH with questions about a proposed addition of a bike skills park to the capped area of the former landfill. Ecology received a copy of this letter and re-evaluated the available Site information in November 2019. Ecology concluded that additional sampling was needed to fully characterize the Site. In January 2020, Ecology withdrew the previous No Further Action determination and placed the Site on what is referred to now as Ecology’s [Contaminated Sites List](#)⁹ for further evaluation under the state cleanup regulations, the Model Toxics Control Act ([MTCA](#))¹⁰.



Figure 5: Uncovered landfill debris

⁹ <https://apps.ecology.wa.gov/cleanupsearch/reports/cleanup/contaminated>

¹⁰ <https://www.ecology.wa.gov/mtca>



Figure 6: Aerial photos of landfill from 2006 vs. 2019

Area community

Anacortes

Anacortes “is a city in Skagit County, Washington. Anacortes' population was 17,637 at the time of the 2020 census. It is one of two principal cities of and included in the Mount Vernon-Anacortes Metropolitan Statistical Area.

Anacortes is on Fidalgo Island. Rosario Strait and the San Juan Islands are to the West while to the South, Deception Pass separates Fidalgo and Whidbey Islands. To the East, the Swinomish Channel separates Fidalgo Island from the mainland.

Anacortes is a popular destination for boaters and those traveling on to the San Juan Islands. Anacortes Community Forest Lands, 2,800 acres with 50 miles of mountain biking and hiking trails, are a valuable amenity in a city the size of Anacortes.

Two of the five refineries operating in Washington are located near the town. Refining remains the area's largest industry, but the economic base now includes yacht construction/shipbuilding, tourism.”¹¹

Tribal engagement

Ecology invites the Swinomish Indian Tribal Community, Samish Indian Nation, Lummi Nation, Upper Skagit Indian Tribe, Sauk-Suiattle Indian Tribe, and Tulalip Tribes to engage with the cleanup process for this site. Ecology will ensure these Tribes have ample opportunity to be involved throughout the process on a government-to-government basis.

¹¹ https://en.wikipedia.org/wiki/Anacortes,_Washington

Environmental Justice

Washington Environmental Health Disparity Map

The [Washington Environmental Health Disparity Map](#)¹² evaluates environmental health risk factors in communities.

Ecology does not interpret rankings as absolute values, and we do not use them to diagnose a community health issue or to label a community. Environmental health disparity is ranked on a scale of 1-10 (low to high). The census tract for the **Site ranks 1** for environmental health risk. (See Figure 7).

The Washington State Department of Health mapping tool model was “specifically adapted from CalEnviroScreen – a cumulative environmental impacts assessment mapping tool developed by CalEPA and used in California. – It estimates a cumulative environmental health impact score for each census tract reflecting pollutant exposures and factors that affect people’s vulnerability to environmental pollution.

The model is based on a conceptual formula of Risk = Threat * Vulnerability, where threat and vulnerability are based on several indicators.

The threat is represented by indicators that account for pollution burden, which is a combination of environmental effects and environmental exposures in communities. Environmental effects include indicators that account for adverse environmental quality generally, even when population contact with an environmental hazard is unknown or uncertain. Environmental exposures include the levels of certain pollutants that populations come into contact with.

Vulnerability is represented by indicators of socioeconomic factors and sensitive populations for which there is clear evidence that they may affect susceptibility or vulnerability to an increased pollution burden. Indicators in socioeconomic factors measure population characteristics that modify the pollution burden itself. Sensitive populations refer to those who are at greater risk due to intrinsic biological vulnerability to environmental stressors.

In the model, threat is multiplied by vulnerability in order to reflect the scientific literature that indicates population characteristics often modify and amplify the impact of pollution exposures on certain vulnerable populations. The rankings help to compare health and social factors that may contribute to disparities in a community.”

¹² <https://fortress.wa.gov/doh/wtnibl/WTNIBL/>

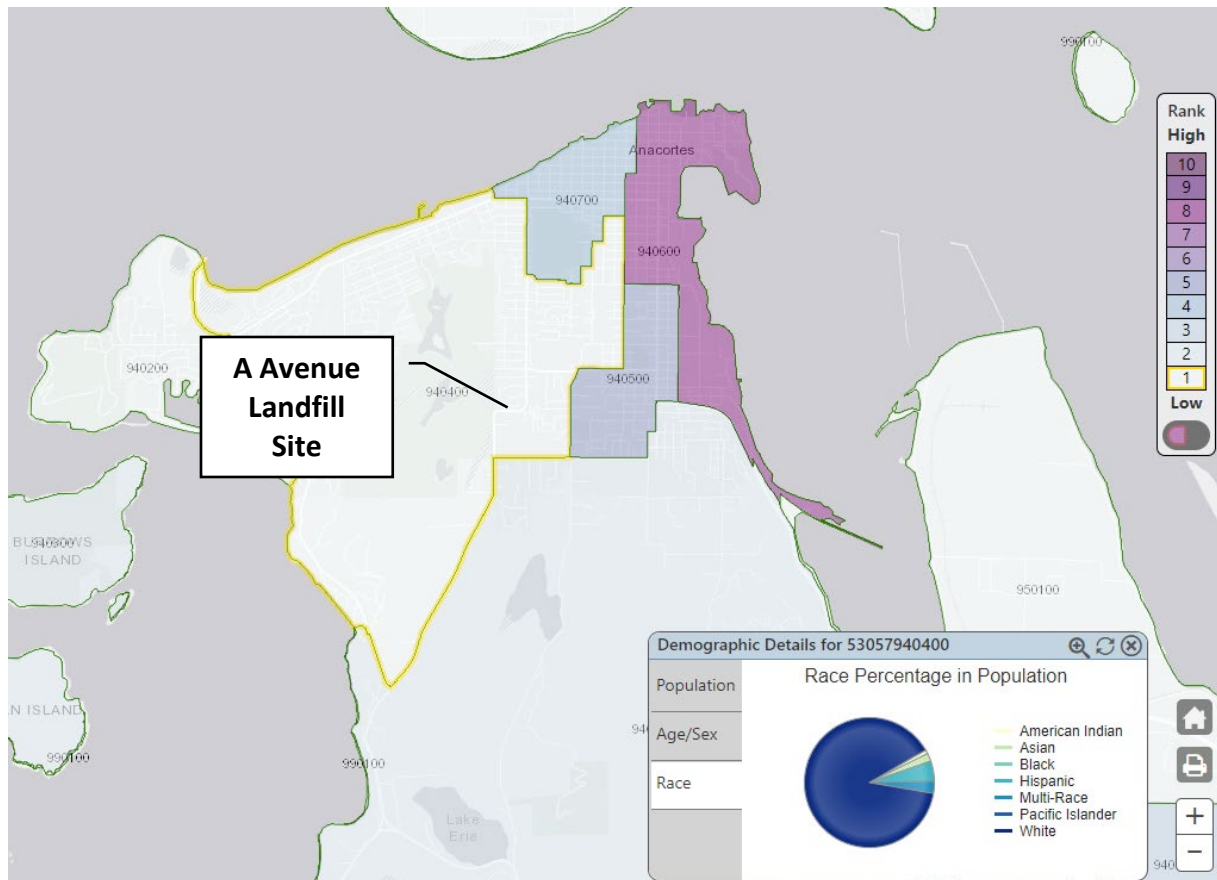


Figure 7: Washington Environmental Health Disparities Map for A Avenue Landfill site

Environmental Justice Screening and Mapping Tool

The data below was generated for a half-mile area around the site using the Environmental Protection Agency’s [Environmental Justice Screening and Mapping Tool](https://ejscreen.epa.gov/mapper/index.html) (EJScreen)¹³. See Appendix B for the “EPA EJScreen Community Report” and Figure 8 for the screened area.

For this site, there was one socio-economic indicators above the EPA 80th percentile for Washington State: population over age 64 (82nd percentile)

Ecology will plan our public outreach to consider this community’s needs. Ecology will reach out to cultural and community organizations as part of our outreach and provide information in other languages as appropriate following federal guidance¹⁴.

¹³ <https://ejscreen.epa.gov/mapper/index.html>

¹⁴ Guidance to Environmental Protection Agency Financial Assistance Recipients Regarding Title VI Prohibition Against National Origin Discrimination Affecting Limited English Proficient Persons, 69 Fed. Reg. § 35602 (June 15, 2004).

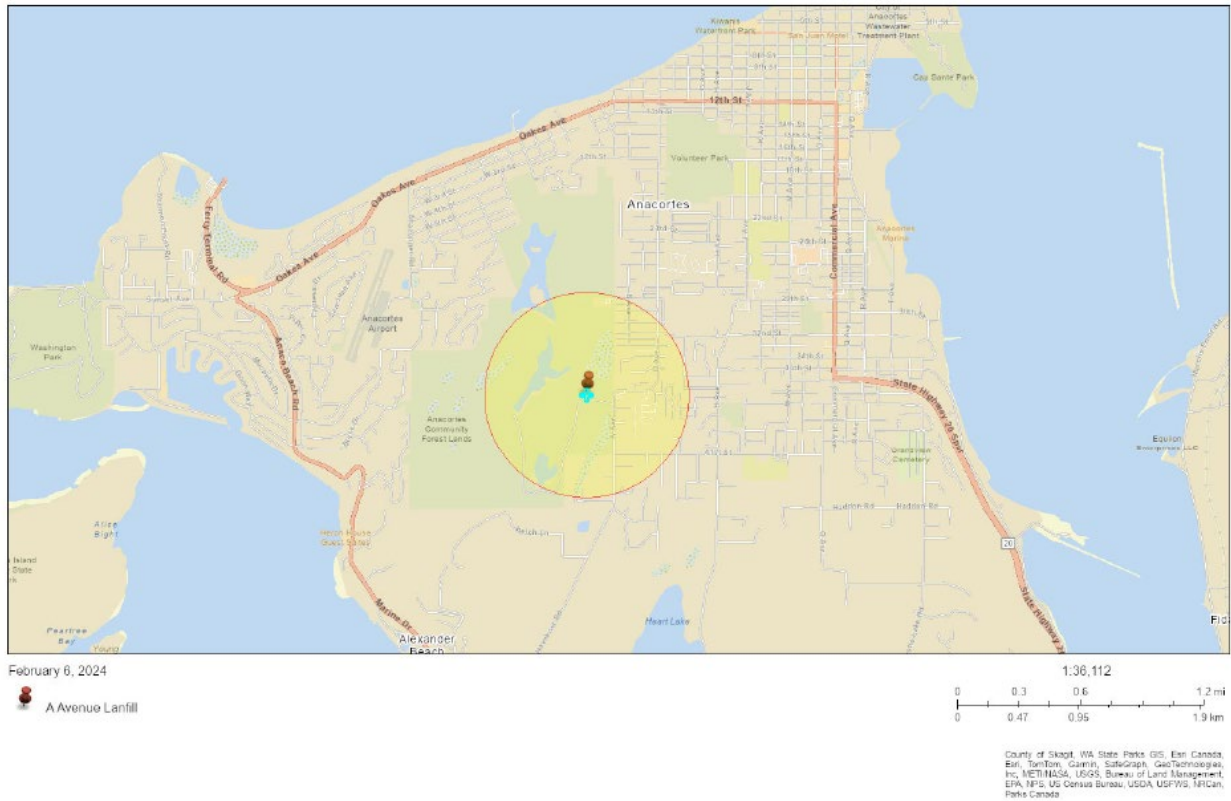


Figure 8: EPA EJScreen generated map of the outreach impact area for the A Avenue Landfill site

The non-English language most widely spoken in the area is Spanish (3.22% of population speak English “less than very well”). When appropriate, Ecology will provide outreach in Spanish including information on how Spanish speakers can request language support services.

We strive to make our public participation efforts as inclusive as possible and welcome your input about how to best reach the nearby community.

Public Participation Activities

Members of the public may ask questions, submit informal comments, or share site information at any time. Interested parties do not need to wait for a formal public comment period to contact Ecology.

However, to be included in the formal site record, comments about the site investigation, cleanup alternatives, or cleanups must be submitted during formal comment periods. In addition, the public is invited to review site documents before they become final. This is the most direct and influential way to learn more about the site and be involved in the cleanup's decision-making.

How we share information with the community

During specific stages of the cleanup, Ecology will mail notices about public comment periods to addresses surrounding the site. The mailing list area will include addresses within at least a half-mile radius of the site and other interested organizations and individuals. These notices will provide general information about the site, contact information for submitting comments, and times and locations of public meetings or hearings or how to request one if not yet scheduled.

Ecology may also develop documents outside of comment periods to keep the community updated on the site's status. These informational documents will be available online and at document repositories. Print copies may be mailed to the nearby community if we feel the message warrants the associated cost and resources.

Comment period notices and other site announcements may also be posted in various locations throughout the community (for example, local businesses, schools, libraries).

Postal mailing list

Ecology maintains a mailing list that includes addresses within at least a half-mile radius of the site and relevant local, state, and federal government contacts.

These people receive public comment notices when draft documents are available.

We will add additional individuals, organizations, and other interested parties to the mailing list as requested. If you would like to be added to the mailing list for this site, please contact Ian Fawley at 425-324-5901 or Ian.Fawley@ecy.wa.gov.

Site Register

Public comment periods, events, and other cleanup notices are published in Ecology's [Site Register](#).¹⁵ To receive the *Site Register* by email, please [subscribe online](#),¹⁶ or contact Sarah Kellington at sarah.kellington@ecy.wa.gov or 360-280-3167.

Newspaper display ads or legal notices

We will announce public comment periods and events for this site in ads or notices published in the [Anacortes American](#)¹⁷ and the [Skagit Valley Herald](#)¹⁸.

Email lists

Ecology maintains an email list to update interested persons about this Site. If you would like to be added to the email list for this site, please contact Ian Fawley at 425-324-5901 or ian.fawley@ecy.wa.gov.

Ecology's website and social media platforms

We maintain a website for the [A Avenue Landfill cleanup site](#)¹⁹. The website provides site information, and you may download cleanup documents.

We will also publish notice on our [Public Input & Events Listing](#).²⁰

We may also share information about cleanup sites through [news releases, our ECOconnect blog, and social media](#).²¹

Places to see print documents

During public comment periods when review locations are accessible, you can find print documents at the following locations:

Anacortes City Hall
904 6th Street
Anacortes, WA 98221
Phone: (360) 293-1900

Washington Department of Ecology
Northwest Region Office
15700 Dayton Ave N
Shoreline, WA 98133

To schedule an appointment with Ecology, please contact the Northwest Region Office Central Records staff at (206) 594-0016 or nwro_public_request@ecy.wa.gov.

¹⁵ ecology.wa.gov/Regulations-Permits/Guidance-technical-assistance/Site-Register-lists-and-data

¹⁶ https://public.govdelivery.com/accounts/WAECY/subscriber/new?topic_id=WAECY_118

¹⁷ <https://www.goskagit.com/anacortes/>

¹⁸ <https://www.goskagit.com/>

¹⁹ <https://apps.ecology.wa.gov/cleanupsearch/site/1771>

²⁰ ecology.wa.gov/Events/Search/Listing

²¹ ecology.wa.gov/About-us/Get-to-know-us/News

Signs around the cleanup site

We may also install signs displaying information about project status, traffic impacts, and health risks around the cleanup site.

How to share information with us

At minimum, MTCA requires 30-day public comment periods for draft cleanup documents and 14-day comment periods for SEPA documents. SEPA documents are often made available for public review with other cleanup documents. In that case, we combine the comment periods, and they last at least 30 days. We may hold comment periods longer than 30 days.

We may also identify public concerns and cleanup goals by meeting with and soliciting information from interested community members and organizations. To collaborate with us about this site, please contact Ian Fawley at 425-324-5901 or Ian.Fawley@ecy.wa.gov.

Public comment periods

Formal 30-day comment periods allow interested members of the public to comment on draft documents, legal agreements, and proposed cleanup actions. If there is significant interest, Ecology may extend the public comment period. When Ecology oversees SEPA determinations, we hold comment periods for at least two weeks and may extend to 30 days or more when other cleanup documents are concurrently available for review.

Following the comment period, we publish all the input we received and respond to significant comments and questions, as appropriate. If the comments result in significant changes to the cleanup documents, then the documents will be revised and re-issued for public review. If the comments do not result in significant changes, then they become final.

Public events

We hold in-person and online public meetings, workshops, open houses, and public hearings based on community interest. If we have not scheduled a meeting, we will hold one if 10 people request it, and this may cause us to extend a public comment period so the meeting occurs during it.

Events are held at locations close to the site that meet Americans with Disabilities Act standards. Public meetings, workshops, open houses, and hearings are always announced in advance using a variety of methods.

Americans with Disabilities Act

To request ADA accommodation for disabilities, or printed materials in a format for the visually impaired, contact the Ecology ADA Coordinator at 360-407-6831 or ecyadacoordinator@ecy.wa.gov, or visit our [ADA website](#).²² People with impaired hearing may call Washington Relay Service at 711. People with speech disability may call TTY at 877-833-6341.

Plan Amendments

Ecology developed this plan following MTCA regulations (WAC 173-340-600). We review it as the cleanup progresses and amend it as necessary. You may suggest amendments to Ian Fawley at 425-324-5901 or Ian.Fawley@ecy.wa.gov. This plan includes information for the public regarding opportunities for public involvement and comment. The outreach activities discussed in this section reflect Ecology's current plans for keeping the public informed and providing ways for those interested in the site to communicate their concerns and questions to us.

If you feel the planned outreach activities and mechanisms described in this plan are insufficient, or should otherwise be modified, we will work to find solutions. New outreach activities or outreach tools established as a result can be implemented right away, with or without amending this plan.

²² <https://ecology.wa.gov/About-us/Accessibility-equity/Accessibility>

Appendices

Appendix A. MTCA Cleanup Process

The cleanup process is defined in the Model Toxics Control Act (MTCA), Washington’s cleanup law. See the attached, accessible PDF for details.

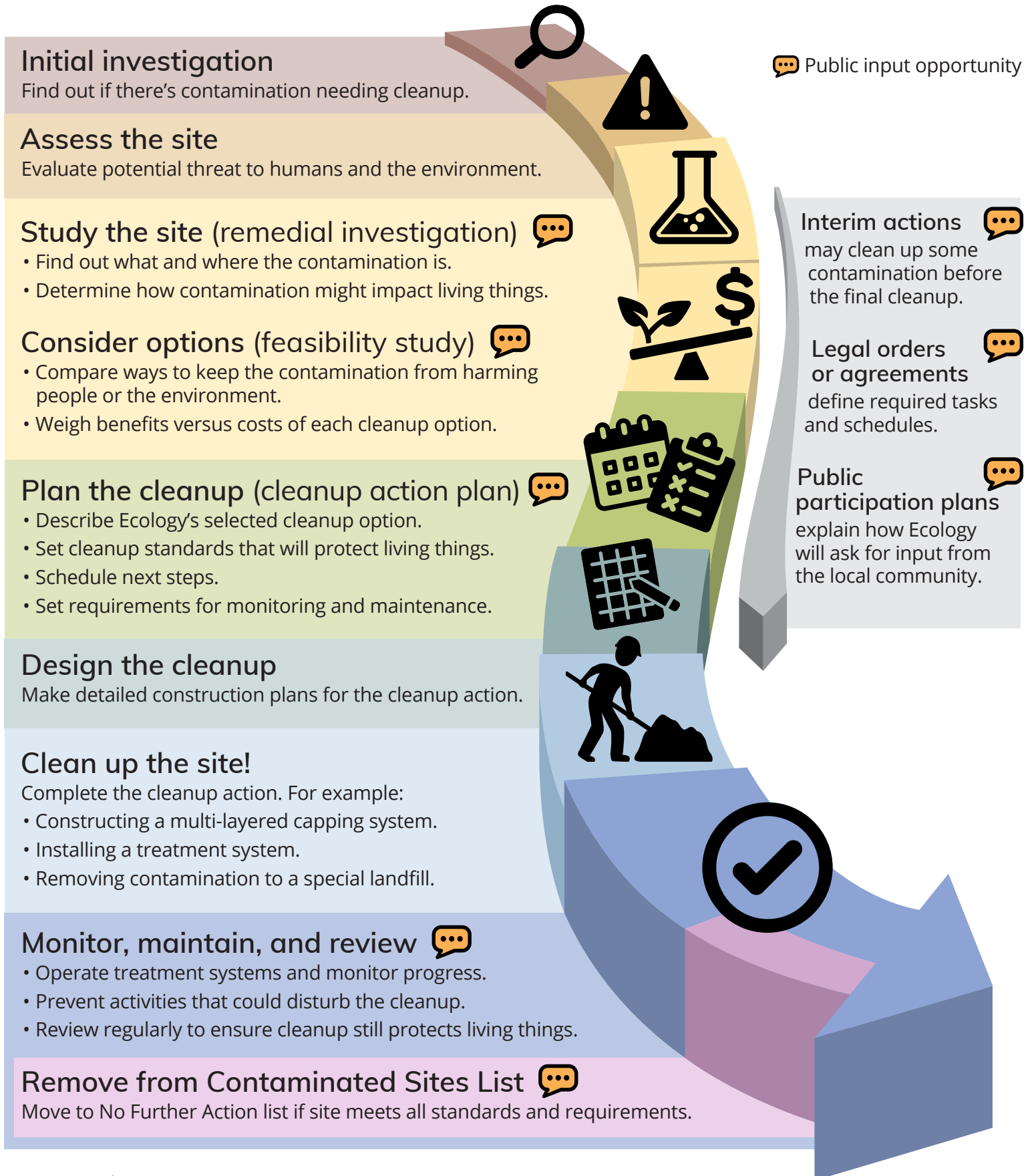
Appendix B. EPA EJScreen Community Report

EPA’s EJSCREEN report for a half-mile radius of the A Avenue Landfill site.

Washington's Cleanup Process



Public participation plans and comment periods are only required for cleanups under a legal agreement with Ecology. Otherwise, all cleanups follow the same steps. The steps are defined by Washington's cleanup law, the Model Toxics Control Act.





EJScreen Community Report

This report provides environmental and socioeconomic information for user-defined areas, and combines that data into environmental justice and supplemental indexes.

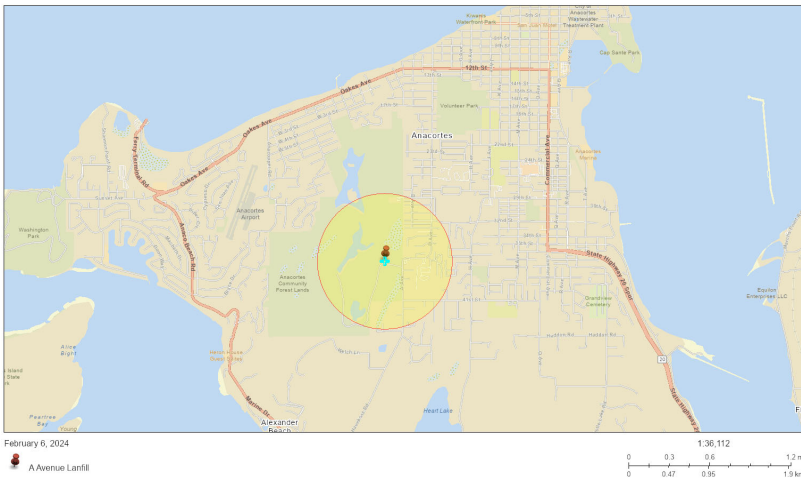
Anacortes, WA

0.5 miles Ring Centered at 48.492139,-122.639112

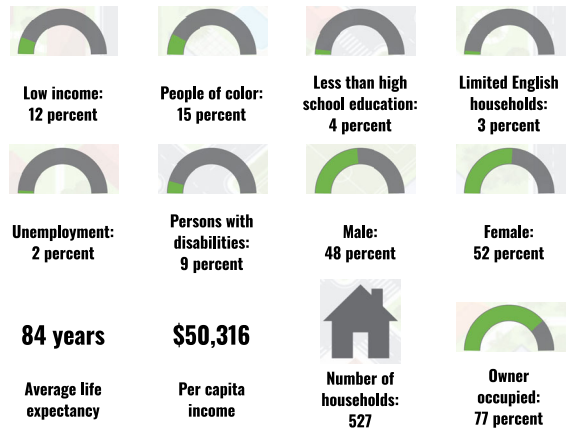
Population: 1,216

Area in square miles: 0.79

A3 Landscape



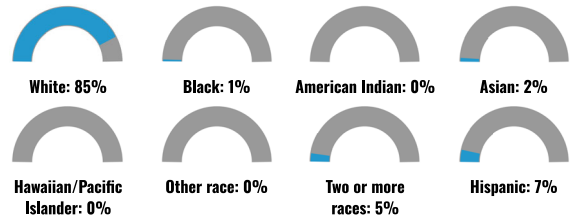
COMMUNITY INFORMATION



LANGUAGES SPOKEN AT HOME

LANGUAGE	PERCENT
English	94%
Spanish	3%
German or other West Germanic	1%
Korean	1%
Tagalog (including Filipino)	1%
Total Non-English	6%

BREAKDOWN BY RACE



BREAKDOWN BY AGE



LIMITED ENGLISH SPEAKING BREAKDOWN



Notes: Numbers may not sum to totals due to rounding. Hispanic population can be of any race. Source: U.S. Census Bureau, American Community Survey (ACS) 2017-2021. Life expectancy data comes from the Centers for Disease Control.

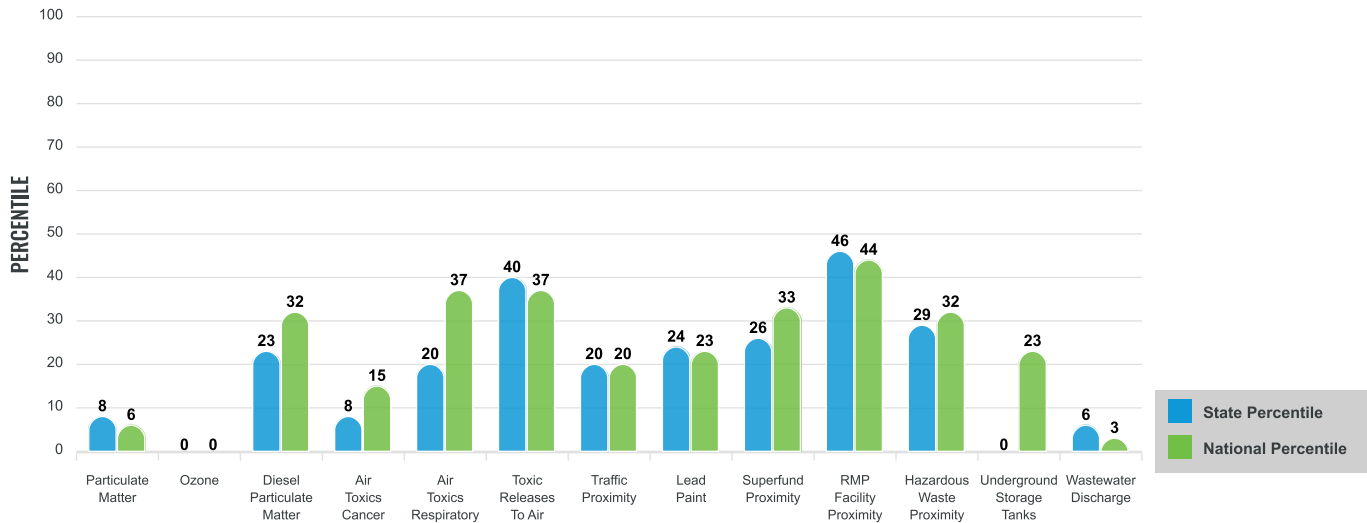
Environmental Justice & Supplemental Indexes

The environmental justice and supplemental indexes are a combination of environmental and socioeconomic information. There are thirteen EJ indexes and supplemental indexes in EJScreen reflecting the 13 environmental indicators. The indexes for a selected area are compared to those for all other locations in the state or nation. For more information and calculation details on the EJ and supplemental indexes, please visit the [EJScreen website](#).

EJ INDEXES

The EJ indexes help users screen for potential EJ concerns. To do this, the EJ index combines data on low income and people of color populations with a single environmental indicator.

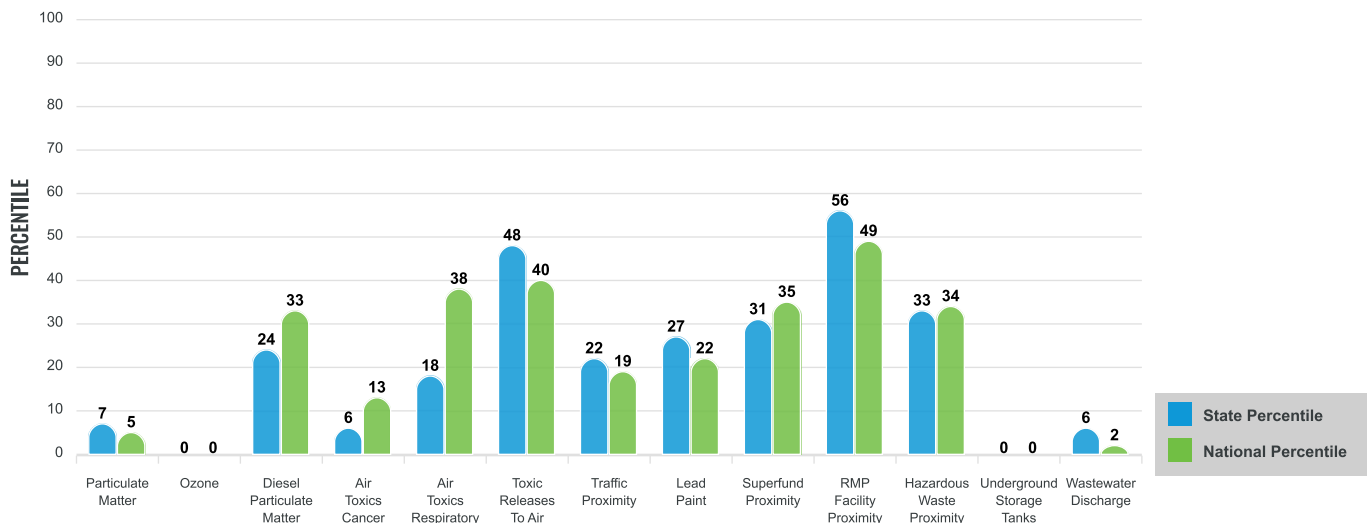
EJ INDEXES FOR THE SELECTED LOCATION



SUPPLEMENTAL INDEXES

The supplemental indexes offer a different perspective on community-level vulnerability. They combine data on percent low-income, percent linguistically isolated, percent less than high school education, percent unemployed, and low life expectancy with a single environmental indicator.

SUPPLEMENTAL INDEXES FOR THE SELECTED LOCATION



These percentiles provide perspective on how the selected block group or buffer area compares to the entire state or nation.

Report for 0.5 miles Ring Centered at 48.492139,-122.639112

EJScreen Environmental and Socioeconomic Indicators Data

SELECTED VARIABLES	VALUE	STATE AVERAGE	PERCENTILE IN STATE	USA AVERAGE	PERCENTILE IN USA
POLLUTION AND SOURCES					
Particulate Matter (µg/m ³)	5.69	7.02	10	8.08	6
Ozone (ppb)	44.1	49.8	0	61.6	0
Diesel Particulate Matter (µg/m ³)	0.202	0.355	31	0.261	46
Air Toxics Cancer Risk* (lifetime risk per million)	20	27	2	25	5
Air Toxics Respiratory HI*	0.3	0.39	14	0.31	31
Toxic Releases to Air	1,000	1,800	59	4,600	59
Traffic Proximity (daily traffic count/distance to road)	22	190	24	210	25
Lead Paint (% Pre-1960 Housing)	0.059	0.23	33	0.3	28
Superfund Proximity (site count/km distance)	0.06	0.18	36	0.13	49
RMP Facility Proximity (facility count/km distance)	0.44	0.4	74	0.43	74
Hazardous Waste Proximity (facility count/km distance)	0.4	1.6	42	1.9	46
Underground Storage Tanks (count/km ²)	0.063	6.3	23	3.9	26
Wastewater Discharge (toxicity-weighted concentration/m distance)	7.1E-08	0.024	8	22	3
SOCIOECONOMIC INDICATORS					
Demographic Index	13%	28%	15	35%	17
Supplemental Demographic Index	7%	12%	22	14%	17
People of Color	15%	32%	22	39%	30
Low Income	12%	24%	29	31%	21
Unemployment Rate	3%	5%	39	6%	39
Limited English Speaking Households	3%	4%	67	5%	69
Less Than High School Education	4%	8%	41	12%	31
Under Age 5	5%	6%	55	6%	56
Over Age 64	25%	16%	82	17%	80
Low Life Expectancy	14%	18%	9	20%	6

*Diesel particulate matter, air toxics cancer risk, and air toxics respiratory hazard index are from the EPA's Air Toxics Data Update, which is the Agency's ongoing, comprehensive evaluation of air toxics in the United States. This effort aims to prioritize air toxics, emission sources, and locations of interest for further study. It is important to remember that the air toxics data presented here provide broad estimates of health risks over geographic areas of the country, not definitive risks to specific individuals or locations. Cancer risks and hazard indices from the Air Toxics Data Update are reported to one significant figure and any additional significant figures here are due to rounding. More information on the Air Toxics Data Update can be found at: <https://www.epa.gov/haps/air-toxics-data-update>.

Sites reporting to EPA within defined area:

Superfund	0
Hazardous Waste, Treatment, Storage, and Disposal Facilities	0
Water Dischargers	2
Air Pollution	0
Brownfields	0
Toxic Release Inventory	0

Other community features within defined area:

Schools	0
Hospitals	0
Places of Worship	2

Other environmental data:

Air Non-attainment	No
Impaired Waters	No

Selected location contains American Indian Reservation Lands*	No
Selected location contains a "Justice40 (CEJST)" disadvantaged community	No
Selected location contains an EPA IRA disadvantaged community	No

Report for 0.5 miles Ring Centered at 48.492139,-122.639112

EJScreen Environmental and Socioeconomic Indicators Data

HEALTH INDICATORS					
INDICATOR	VALUE	STATE AVERAGE	STATE PERCENTILE	US AVERAGE	US PERCENTILE
Low Life Expectancy	14%	18%	9	20%	6
Heart Disease	6.4	5.3	77	6.1	58
Asthma	9.7	10.5	22	10	46
Cancer	8.9	6.3	96	6.1	95
Persons with Disabilities	9.1%	13.1%	27	13.4%	25

CLIMATE INDICATORS					
INDICATOR	VALUE	STATE AVERAGE	STATE PERCENTILE	US AVERAGE	US PERCENTILE
Flood Risk	3%	11%	37	12%	30
Wildfire Risk	0%	12%	0	14%	0

CRITICAL SERVICE GAPS					
INDICATOR	VALUE	STATE AVERAGE	STATE PERCENTILE	US AVERAGE	US PERCENTILE
Broadband Internet	5%	9%	40	14%	26
Lack of Health Insurance	3%	6%	21	9%	18
Housing Burden	No	N/A	N/A	N/A	N/A
Transportation Access	No	N/A	N/A	N/A	N/A
Food Desert	No	N/A	N/A	N/A	N/A

Report for 0.5 miles Ring Centered at 48.492139,-122.639112