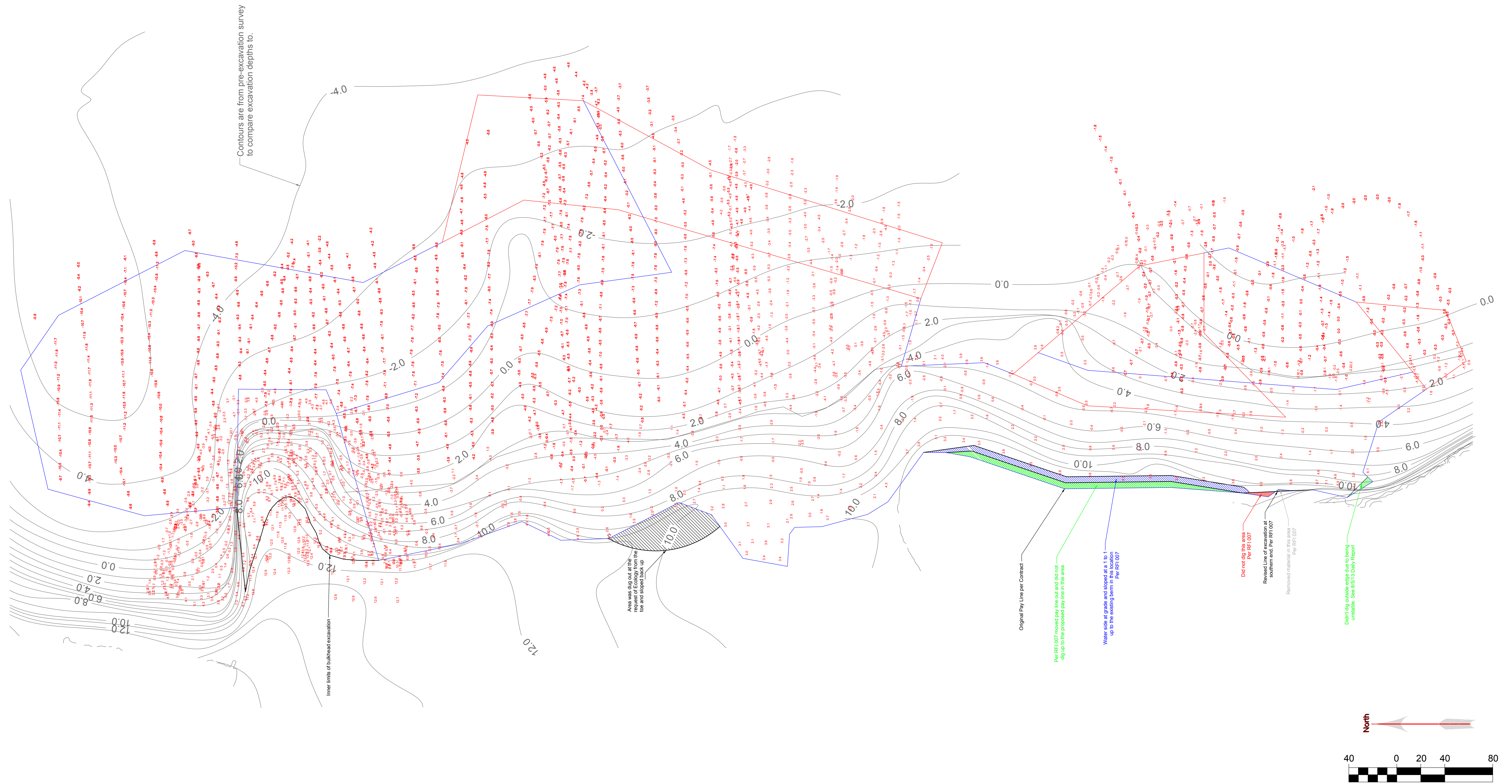


APPENDIX A

Survey and As-Built Drawings

Notes:

1. Horizontal Datum: NAD 83 WA North
2. Vertical Datum: Mean Lower Low Water (MLLW)
3. Hydrographic data collected by Orion Marine Group
4. Topographic data collected by Pacific Surveying



Client Name:	Department of Ecology	Date:	2/17/14
Project Name:	Custon Plywood Phase II	Drawn By:	JAS
Project No.:	C13000198	Check By:	
Drawing:	Excavation Extents	Rev #:	R-0



Drawing S-00

Custom Plywood Site Phase B Interim Remedial Action

SHEET INDEX:

- SHEET 1 - COVER & VICINITY MAP
- SHEET 2 - BATHYMETRIC SURVEY - SOUNDINGS
- SHEET 3 - BATHYMETRIC SURVEY - CONTOURS

GENERAL NOTES:

1. HORIZONTAL DATUM/PROJECTION: NAD 83 WA SPC NORTH (U.S. SURVEY FEET).
2. VERTICAL DATUM: MEAN LOWER LOW WATER (MLLW).
3. HORIZONTAL AND VERTICAL CONTROL: SEE TABLE ON S1.
4. CONTOURS GENERATED USING HYPACK V. 2011
5. NOT TO BE USED FOR NAVIGATION.

HYDROGRAPHIC SURVEY NOTES:

6. BATHYMETRIC DATA COLLECTED BY ETRAC ENGINEERING, INC ON JUNE 24, 2013.
7. BATHYMETRIC INFORMATION IS ONLY VALID FOR THE TIME IN WHICH THE SURVEY WAS CONDUCTED.
8. POSITION AND MOTION DATA WERE COLELCTED USING AN APPLANIX POSMV WAVEMASTER V5.
9. SOUNDINGS WERE COLLECTED USING AN R2SONIC 2022 MULTIBEAM ECHOSOUNDER.

TOPOGRAPHIC LIDAR SURVEY NOTES:

10. TOPOGRAPHIC LIDAR DATA COLLECTED BY ETRAC ENGINEERING, INC. ON JUNE 24, 2013.
11. TOPOGRAPHIC LIDAR DATA COLLECTED USING A RIEGL VZ-400 LASER SCANNER.

TOPOGRAPHIC SURVEY NOTES:

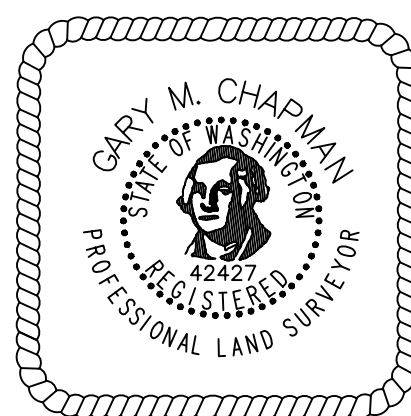
12. TOPOGRAPHIC DATA COLLECTED BY AES CONSULTANTS, INC. ON JUNE 24, 2013.
13. TOPOGRAPHIC DATA COLLECTED USING A LEICA 1200 GPS RECEIVING RTK CORRECTIONS.
14. ADDITIONAL TOPOGRAPHIC DATA COLLECTED USING A TOPCON 3 SECOND TOTAL STATION.



VICINITY MAP

(Not to Scale)

Anacortes Custom Plywood Project Control Table				
Point ID	Northing	Easting	Elevation	Code
10	551,381.187	1,210,502.493	29.602	CFMON
20	550,790.353	1,210,483.110	38.964	CFMON
30	550,198.879	1,210,463.668	54.792	CFMON
31	550,143.311	1,211,846.784	11.170	CSRPC
32	550,410.255	1,211,917.891	9.610	CSRPC
33	549,783.228	1,211,931.309	10.250	CSRPC
34	549,664.147	1,211,757.483	15.220	CSPK
35	549,888.694	1,211,583.709	15.720	CSPK
36	550,248.145	1,211,603.542	15.500	CSPK
37	549,418.310	1,211,919.880	13.910	CSPK
100	550,185.135	1,211,886.107	21.534	CUT X



NAD 83/91 WA SPC North, U.S. Survey Feet
MLLW (feet)



NO.	DATE	BY	REVISION

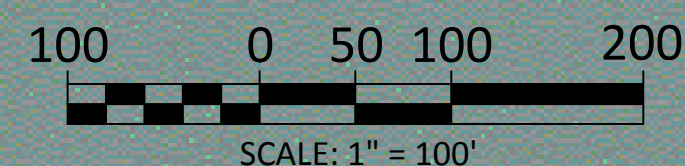
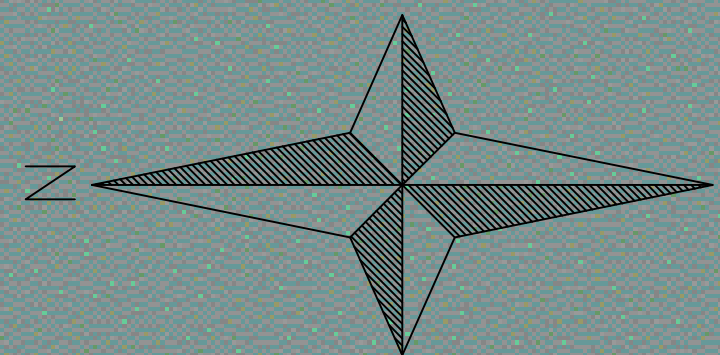


**CUSTOM PLYWOOD SITE PHASE II
INTERIM REMEDIAL ACTION
ANACORTES, WASHINGTON**

PRE-CONSTRUCTION SURVEY

DRAWN:	PROJECT NO.:
DESIGN:	SCALE:
CHECKED:	DATE: JUN 28, 2013
CONTRACT NO. C1300198	
SHEET NO. 1	OF 3

□□□ BATHYMETRIC AND TOPOGRAPHIC LIDAR DATA
□□□ TOPOGRAPHIC DATA



PROJECT LIMITS

GENERAL NOTES:

1. HORIZONTAL DATUM/PROJECTION: NAD 83 WA SPC NORTH (U.S. SURVEY FEET).
2. VERTICAL DATUM: MEAN LOWER LOW WATER (MLLW).
3. HORIZONTAL AND VERTICAL CONTROL: SEE TABLE ON S1.
4. CONTOURS GENERATED USING HYPACK V. 2011
5. NOT TO BE USED FOR NAVIGATION.

HYDROGRAPHIC SURVEY NOTES:

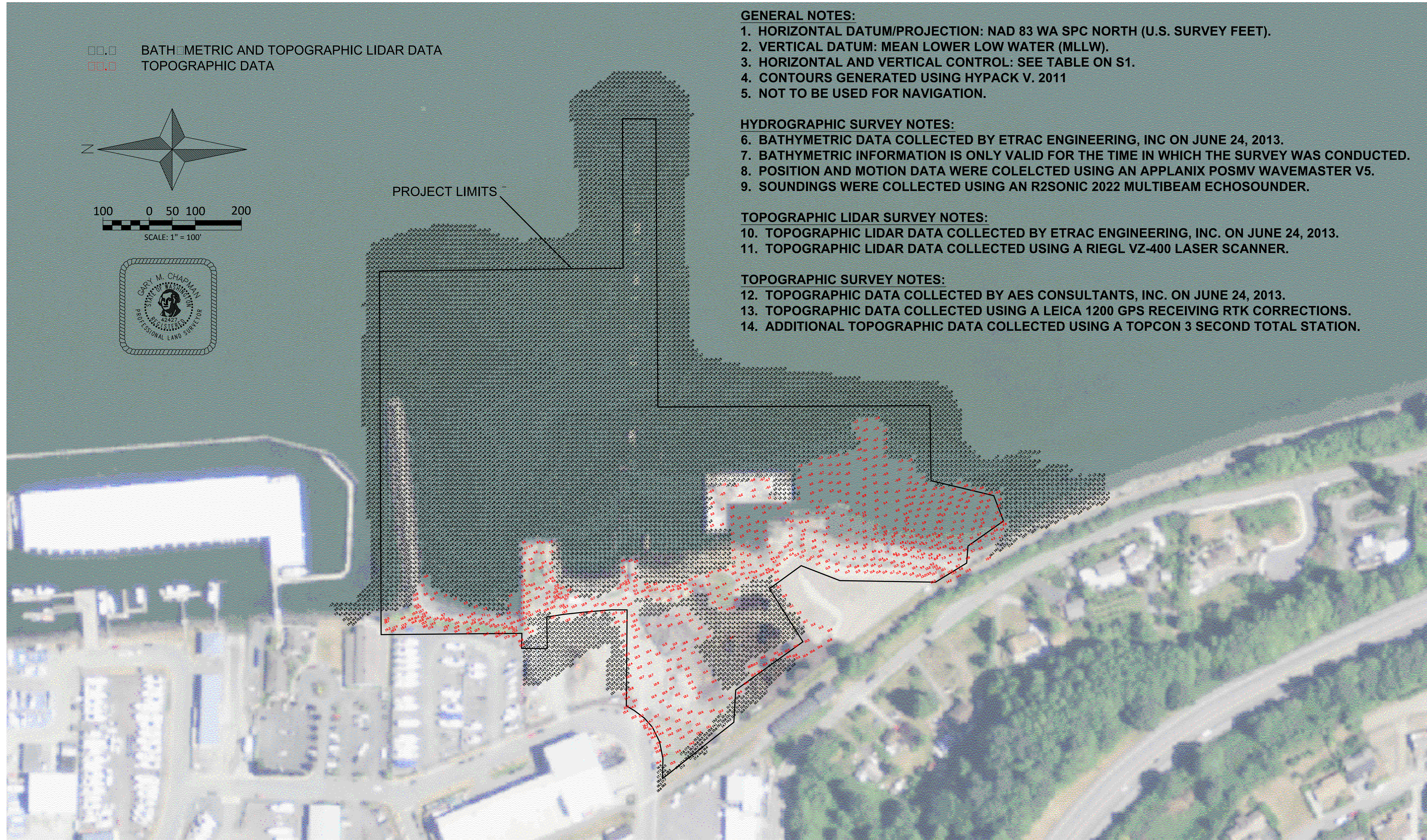
6. BATHYMETRIC DATA COLLECTED BY ETRAC ENGINEERING, INC ON JUNE 24, 2013.
7. BATHYMETRIC INFORMATION IS ONLY VALID FOR THE TIME IN WHICH THE SURVEY WAS CONDUCTED.
8. POSITION AND MOTION DATA WERE COLELCTED USING AN APPLANIX POSMV WAVEMASTER V5.
9. SOUNDINGS WERE COLLECTED USING AN R2SONIC 2022 MULTIBEAM ECHOSOUNDER.

TOPOGRAPHIC LIDAR SURVEY NOTES:

10. TOPOGRAPHIC LIDAR DATA COLLECTED BY ETRAC ENGINEERING, INC. ON JUNE 24, 2013.
11. TOPOGRAPHIC LIDAR DATA COLLECTED USING A RIEGL VZ-400 LASER SCANNER.

TOPOGRAPHIC SURVEY NOTES:

12. TOPOGRAPHIC DATA COLLECTED BY AES CONSULTANTS, INC. ON JUNE 24, 2013.
13. TOPOGRAPHIC DATA COLLECTED USING A LEICA 1200 GPS RECEIVING RTK CORRECTIONS.
14. ADDITIONAL TOPOGRAPHIC DATA COLLECTED USING A TOPCON 3 SECOND TOTAL STATION.



NO.	DATE	BY	REVISION

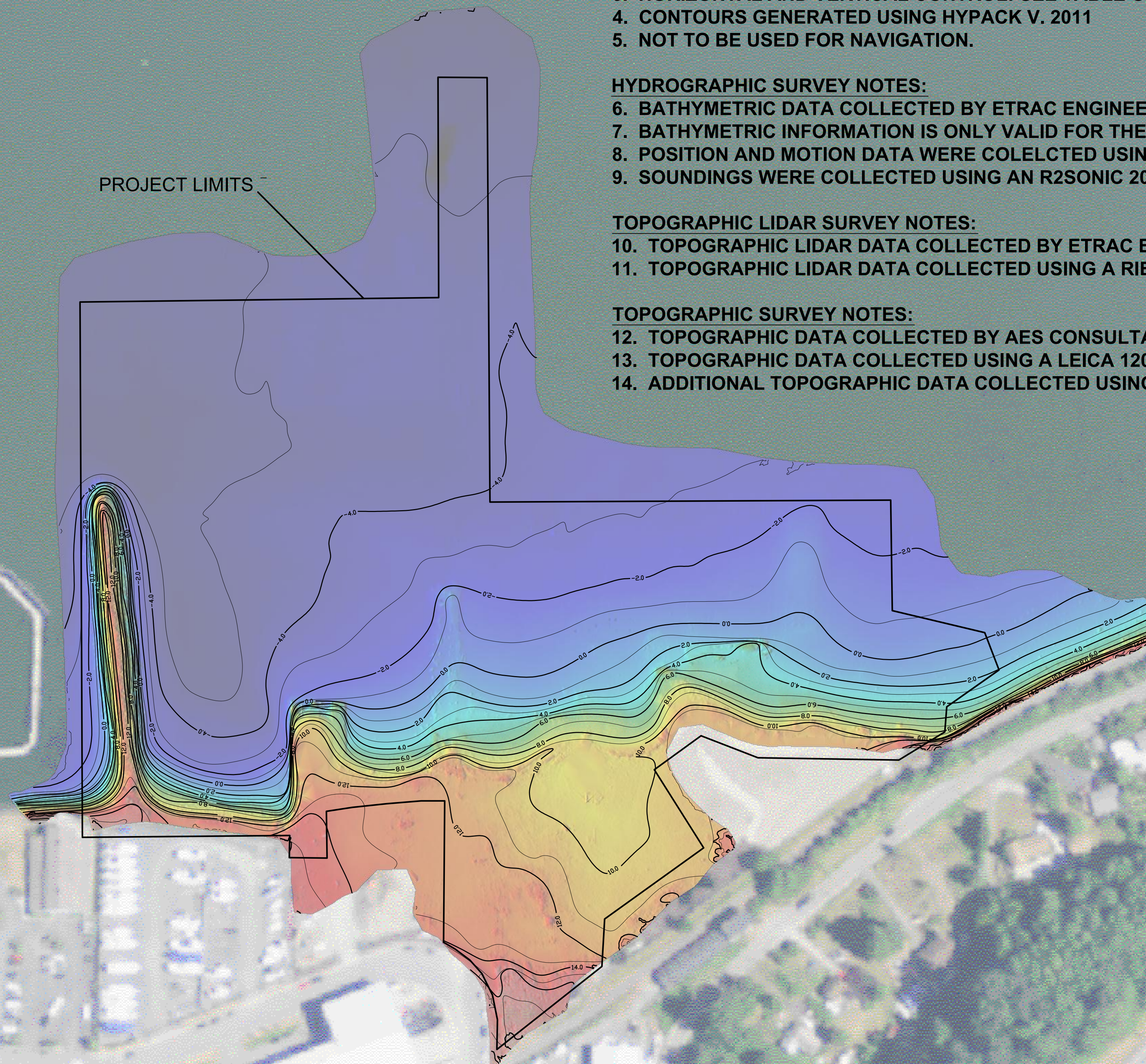
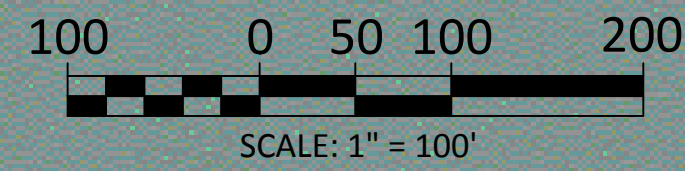
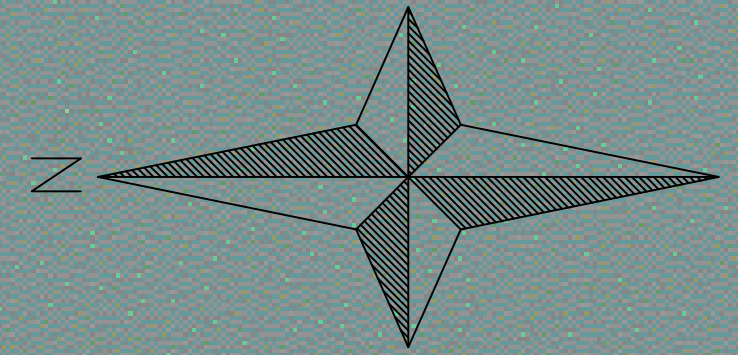


In Coordination with GBH Investments

**CUSTOM PLYWOOD SITE PHASE II
INTERIM REMEDIAL ACTION
ANACORTES, WASHINGTON**

PRE-CONSTRUCTION SURVEY

DRAWN:	PROJECT NO.:
DESIGN:	SCALE:
CHECKED:	DATE: JUN 28, 2013
CONTRACT NO.	
C1300198	
SHEET NO. 2	OF 3



GENERAL NOTES:

1. HORIZONTAL DATUM/PROJECTION: NAD 83 WA SPC NORTH (U.S. SURVEY FEET).
2. VERTICAL DATUM: MEAN LOWER LOW WATER (MLLW).
3. HORIZONTAL AND VERTICAL CONTROL: SEE TABLE ON S1.
4. CONTOURS GENERATED USING HYPACK V. 2011
5. NOT TO BE USED FOR NAVIGATION.

HYDROGRAPHIC SURVEY NOTES:

6. BATHYMETRIC DATA COLLECTED BY ETRAC ENGINEERING, INC ON JUNE 24, 2013.
7. BATHYMETRIC INFORMATION IS ONLY VALID FOR THE TIME IN WHICH THE SURVEY WAS CONDUCTED.
8. POSITION AND MOTION DATA WERE COLELCTED USING AN APPLANIX POSMV WAVEMASTER V5.
9. SOUNDINGS WERE COLLECTED USING AN R2SONIC 2022 MULTIBEAM ECHOSOUNDER.

TOPOGRAPHIC LIDAR SURVEY NOTES:

10. TOPOGRAPHIC LIDAR DATA COLLECTED BY ETRAC ENGINEERING, INC. ON JUNE 24, 2013.
11. TOPOGRAPHIC LIDAR DATA COLLECTED USING A RIEGL VZ-400 LASER SCANNER.

TOPOGRAPHIC SURVEY NOTES:

12. TOPOGRAPHIC DATA COLLECTED BY AES CONSULTANTS, INC. ON JUNE 24, 2013.
13. TOPOGRAPHIC DATA COLLECTED USING A LEICA 1200 GPS RECEIVING RTK CORRECTIONS.
14. ADDITIONAL TOPOGRAPHIC DATA COLLECTED USING A TOPCON 3 SECOND TOTAL STATION.



NO.	DATE	BY	REVISION



In Coordination with GBH Investments

**CUSTOM PLYWOOD SITE PHASE II
INTERIM REMEDIAL ACTION
ANACORTES, WASHINGTON**

PRE-CONSTRUCTION SURVEY

DRAWN:	PROJECT NO.:
DESIGN:	SCALE:
CHECKED:	DATE: JUN 28, 2013
CONTRACT NO.	C1300198
SHEET NO. 3	OF 3

Custom Plywood Site Phase II Interim Remedial Action

SHEET INDEX:

- SHEET 1 - COVER & VICINITY MAP
- SHEET 2 - BATHYMETRIC SURVEY - SOUNDINGS
- SHEET 3 - BATHYMETRIC SURVEY - CONTOURS

GENERAL NOTES:

1. HORIZONTAL DATUM/PROJECTION: NAD 83 WA SPC NORTH (U.S. SURVEY FEET).
2. VERTICAL DATUM: MEAN LOWER LOW WATER (MLLW).
3. HORIZONTAL AND VERTICAL CONTROL: SEE TABLE ON S1.
4. CONTOURS GENERATED USING HYPACK V. 2011
5. NOT TO BE USED FOR NAVIGATION.

HYDROGRAPHIC SURVEY NOTES:

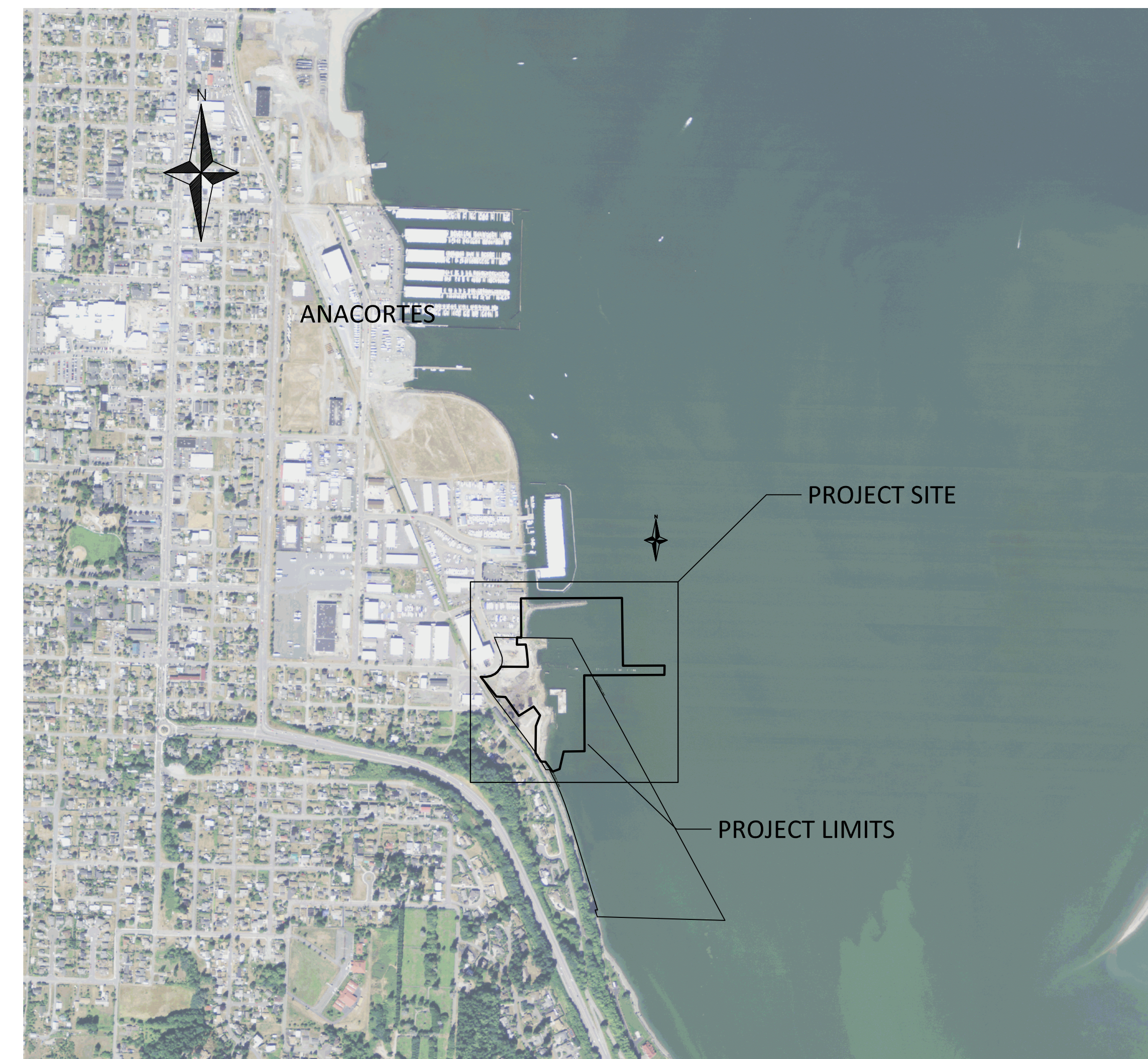
6. BATHYMETRIC DATA COLLECTED BY ETRAC ENGINEERING, INC ON DECEMBER 19, 2013.
7. BATHYMETRIC INFORMATION IS ONLY VALID FOR THE TIME IN WHICH THE SURVEY WAS CONDUCTED.
8. POSITION AND MOTION DATA WERE COLELCTED USING AN APPLANIX POSMV WAVEMASTER V5.
9. SOUNDINGS WERE COLLECTED USING AN R2SONIC 2024 MULTIBEAM ECHOSOUNDER.

TOPOGRAPHIC LIDAR SURVEY NOTES:

10. TOPOGRAPHIC LIDAR DATA COLLECTED BY ETRAC ENGINEERING, INC. ON DECEMBER 19, 2013.
11. TOPOGRAPHIC LIDAR DATA COLLECTED USING A RIEGL VZ-400 LASER SCANNER.

TOPOGRAPHIC SURVEY NOTES:

12. TOPOGRAPHIC DATA COLLECTED BY AES CONSULTANTS, INC. ON DECEMBER 20, 2013.
13. TOPOGRAPHIC DATA COLLECTED USING A LEICA 1200 GPS RECEIVING RTK CORRECTIONS.
14. ADDITIONAL TOPOGRAPHIC DATA COLLECTED USING A TOPCON 3 SECOND TOTAL STATION.



VICINITY MAP

(Not to Scale)

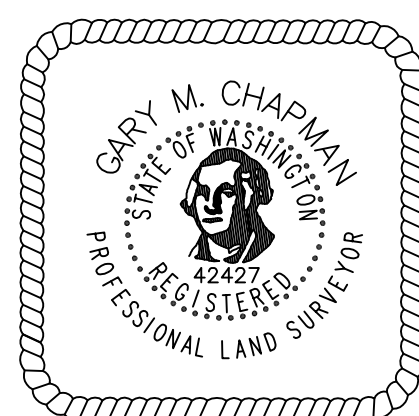
TIDAL INFORMATION

TIDAL DATUM PLANE - ANACORTES, GUEMES CHANNEL, SKAGIT COUNTY (FROM WASHINGTON DEPARTMENT OF ECOLOGY)

	MLLW DATUM	NAVD88 DATUM
HIGHEST RECORDED TIDE: ESTIMATED (EHW)	11.00 FT.	
MEAN HIGHER HIGH WATER: (MHHW)	8.20 FT.	MHHW = 7.55 FT.
MEAN HIGH WATER: (MHW)	7.40 FT.	
MEAN (HALF) TIDE LEVEL: (MTL)	5.00 FT.	
MEAN SEA LEVEL: (MSL)	4.42 FT.	
MEAN LOW WATER: (MLW)	2.60 FT.	
MEAN LOWER LOW WATER: (MLLW)	0.00 FT.	MLLW = -0.65 FT.
LOWEST RECORDED TIDE: (ELW)	-4.50 FT.	

Point ID	Northing	Easting	Elevation	Code
10	551,381.187	1,210,502.493	29.602	CFMON
20	550,790.353	1,210,483.110	38.964	CFMON
30	550,198.879	1,210,463.668	54.792	CFMON
31	550,143.311	1,211,846.784	11.170	CSRPC
32	550,410.255	1,211,917.891	9.610	CSRPC
33	549,783.228	1,211,931.309	10.250	CSRPC
34	549,664.147	1,211,757.483	15.220	CSPK
35	549,888.694	1,211,583.709	15.720	CSPK
36	550,248.145	1,211,603.542	15.500	CSPK
37	549,418.310	1,211,919.880	13.910	CSPK
100	550,185.135	1,211,886.107	21.534	CUT X

NAD 83/91 WA SPC North, U.S. Survey Feet
MLLW (feet)



NO.	DATE	BY	REVISION

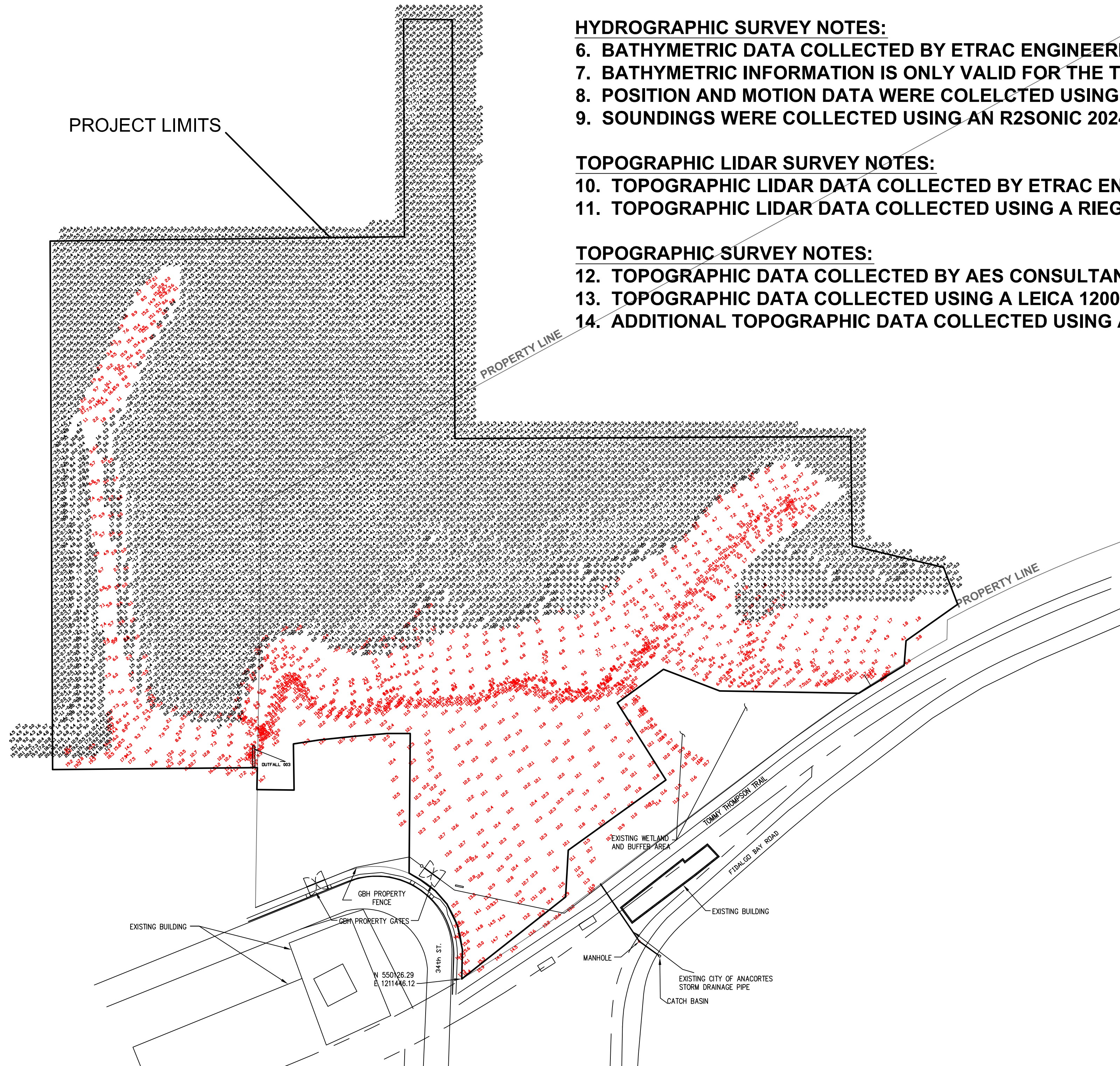
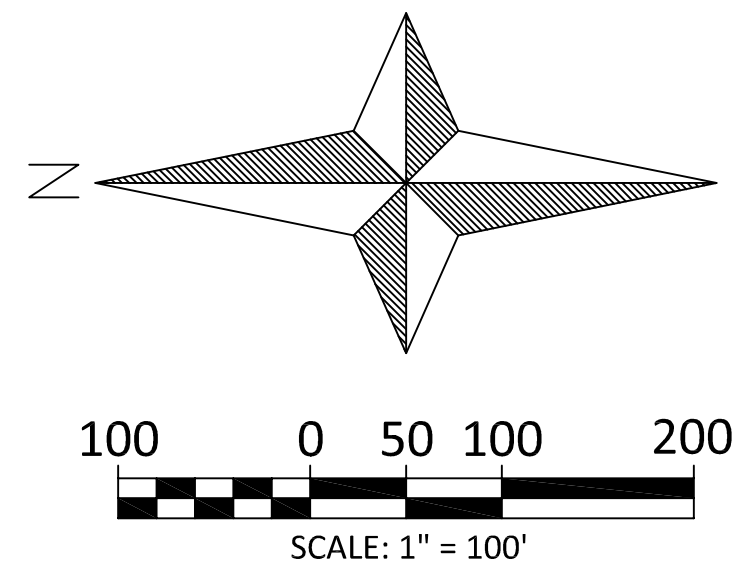


**CUSTOM PLYWOOD SITE PHASE II
INTERIM REMEDIAL ACTION
ANACORTES, WASHINGTON**

POST-CONSTRUCTION SURVEY

DRAWN: GWG	PROJECT NO.:
DESIGN:	SCALE: 1"=100' (11x17)
CHECKED: JAA	DATE: FEB 24, 2014
CONTRACT NO.	
C1300198	
SHEET NO. 1	OF 3

XX.X BATHYMETRIC AND TOPOGRAPHIC LIDAR DATA
 XX.X TOPOGRAPHIC DATA



GENERAL NOTES:

1. HORIZONTAL DATUM/PROJECTION: NAD 83 WA SPC NORTH (U.S. SURVEY FEET).
2. VERTICAL DATUM: MEAN LOWER LOW WATER (MLLW).
3. HORIZONTAL AND VERTICAL CONTROL: SEE TABLE ON S1.
4. CONTOURS GENERATED USING HYPACK V. 2011
5. NOT TO BE USED FOR NAVIGATION.

HYDROGRAPHIC SURVEY NOTES:

6. BATHYMETRIC DATA COLLECTED BY ETRAC ENGINEERING, INC ON DECEMBER 19, 2013.
7. BATHYMETRIC INFORMATION IS ONLY VALID FOR THE TIME IN WHICH THE SURVEY WAS CONDUCTED.
8. POSITION AND MOTION DATA WERE COLELCTED USING AN APPLANIX POSMV WAVEMASTER V5.
9. SOUNDINGS WERE COLLECTED USING AN R2SONIC 2024 MULTIBEAM ECHOSOUNDER.

TOPOGRAPHIC LIDAR SURVEY NOTES:

10. TOPOGRAPHIC LIDAR DATA COLLECTED BY ETRAC ENGINEERING, INC. ON DECEMBER 19, 2013.
11. TOPOGRAPHIC LIDAR DATA COLLECTED USING A RIEGL VZ-400 LASER SCANNER.

TOPOGRAPHIC SURVEY NOTES:

12. TOPOGRAPHIC DATA COLLECTED BY AES CONSULTANTS, INC. ON DECEMBER 20, 2013.
13. TOPOGRAPHIC DATA COLLECTED USING A LEICA 1200 GPS RECEIVING RTK CORRECTIONS.
14. ADDITIONAL TOPOGRAPHIC DATA COLLECTED USING A TOPCON 3 SECOND TOTAL STATION.



NO.	DATE	BY	REVISION

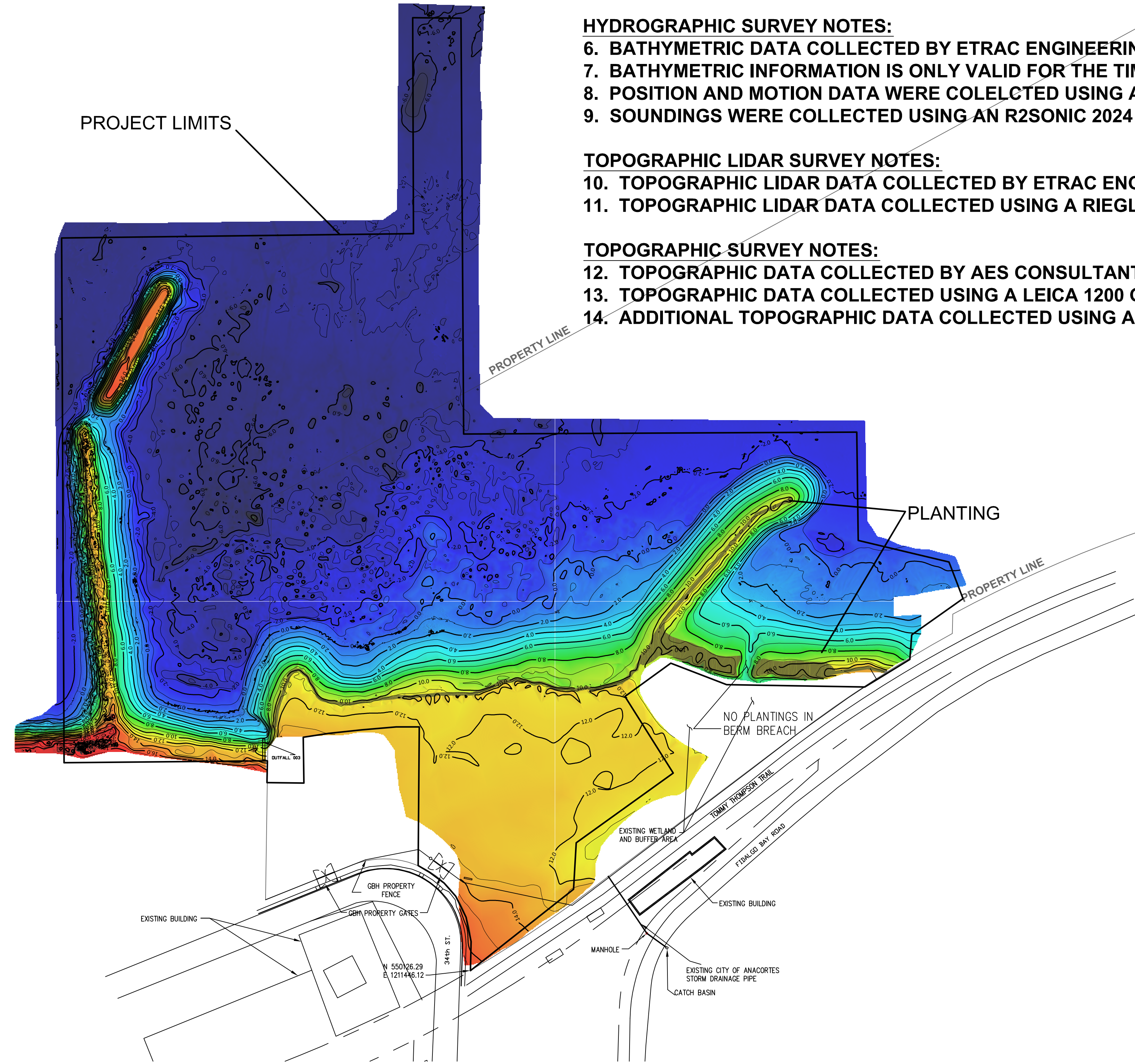
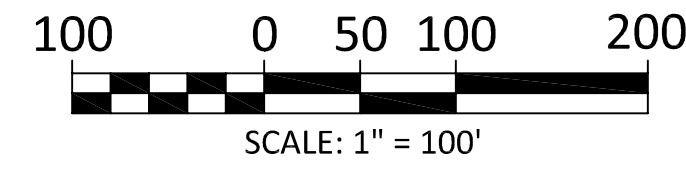
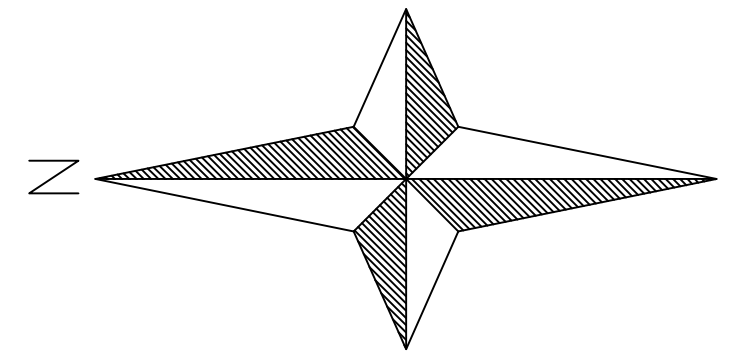


**CUSTOM PLYWOOD SITE PHASE II
 INTERIM REMEDIAL ACTION
 ANACORTES, WASHINGTON**

POST-CONSTRUCTION SURVEY

DRAWN: GWG	PROJECT NO.:
DESIGN:	SCALE: 1"=100' (11x17)
CHECKED: JAA	DATE: FEB 24, 2014
CONTRACT NO.	
C1300198	
SHEET NO. 2	OF 3

DUNEGRASS PLANTING



GENERAL NOTES:

1. HORIZONTAL DATUM/PROJECTION: NAD 83 WA SPC NORTH (U.S. SURVEY FEET).
2. VERTICAL DATUM: MEAN LOWER LOW WATER (MLLW).
3. HORIZONTAL AND VERTICAL CONTROL: SEE TABLE ON S1.
4. CONTOURS GENERATED USING HYPACK V. 2011
5. NOT TO BE USED FOR NAVIGATION.

HYDROGRAPHIC SURVEY NOTES:

6. BATHYMETRIC DATA COLLECTED BY ETRAC ENGINEERING, INC ON DECEMBER 19, 2013.
7. BATHYMETRIC INFORMATION IS ONLY VALID FOR THE TIME IN WHICH THE SURVEY WAS CONDUCTED.
8. POSITION AND MOTION DATA WERE COLELCTED USING AN APPLANIX POSMV WAVEMASTER V5.
9. SOUNDINGS WERE COLLECTED USING AN R2SONIC 2024 MULTIBEAM ECHOSOUNDER.

TOPOGRAPHIC LIDAR SURVEY NOTES:

10. TOPOGRAPHIC LIDAR DATA COLLECTED BY ETRAC ENGINEERING, INC. ON DECEMBER 19, 2013.
11. TOPOGRAPHIC LIDAR DATA COLLECTED USING A RIEGL VZ-400 LASER SCANNER.

TOPOGRAPHIC SURVEY NOTES:

12. TOPOGRAPHIC DATA COLLECTED BY AES CONSULTANTS, INC. ON DECEMBER 20, 2013.
13. TOPOGRAPHIC DATA COLLECTED USING A LEICA 1200 GPS RECEIVING RTK CORRECTIONS.
14. ADDITIONAL TOPOGRAPHIC DATA COLLECTED USING A TOPCON 3 SECOND TOTAL STATION.



NO.	DATE	BY	REVISION



**CUSTOM PLYWOOD SITE PHASE II
INTERIM REMEDIAL ACTION
ANACORTES, WASHINGTON**

POST-CONSTRUCTION SURVEY

DRAWN: GWG	PROJECT NO.:
DESIGN:	SCALE: 1"=100' (11x17)
CHECKED: JAA	DATE: FEB 24, 2014
CONTRACT NO.	
C1300198	
SHEET NO. 3	OF 3