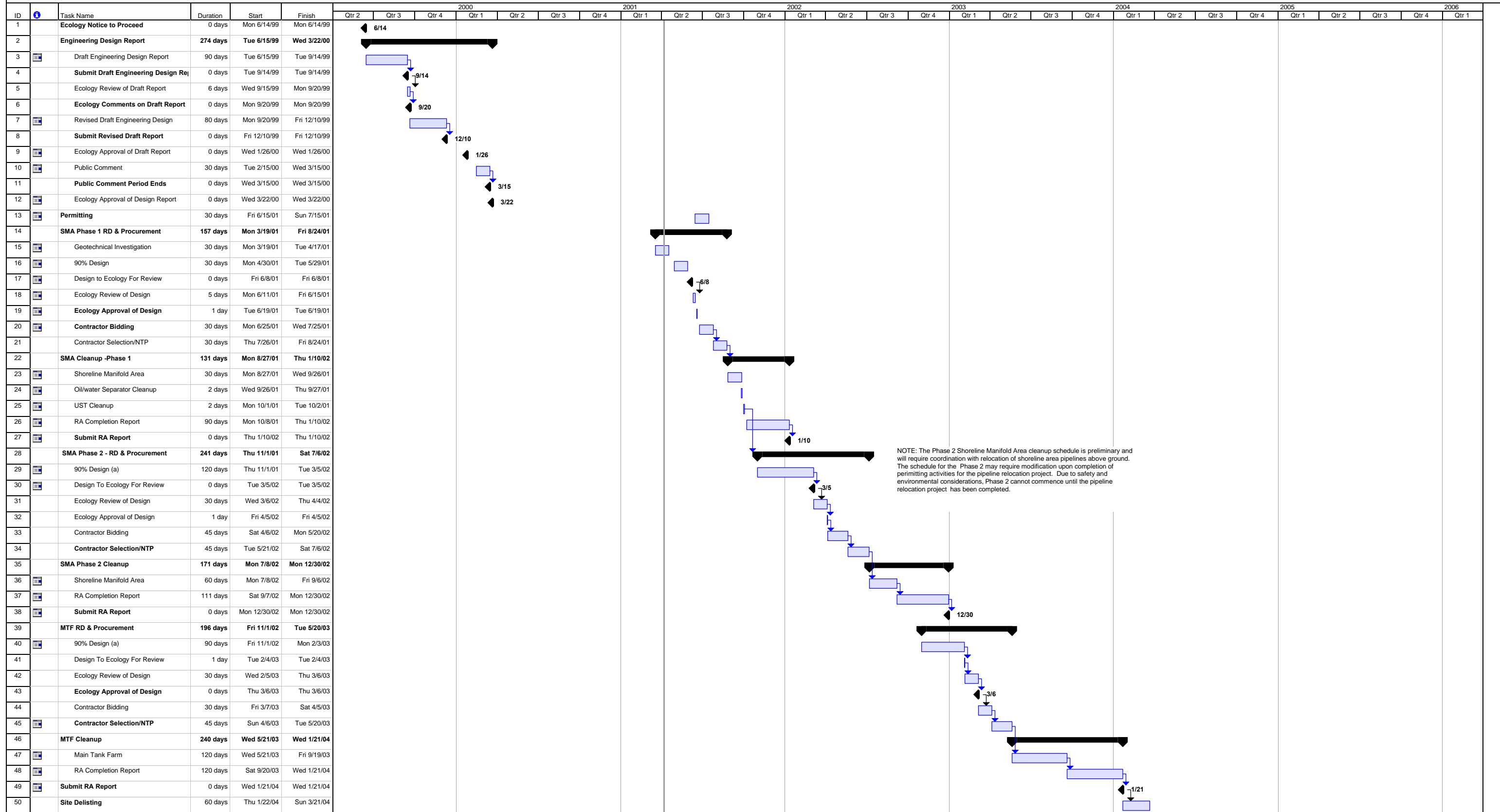


SEATTLE TERMINAL CLEANUP SCHEDULE



NOTE: The Phase 2 Shoreline Manifold Area cleanup schedule is preliminary and will require coordination with relocation of shoreline area pipelines above ground. The schedule for the Phase 2 may require modification upon completion of permitting activities for the pipeline relocation project. Due to safety and environmental considerations, Phase 2 cannot commence until the pipeline relocation project has been completed.

Project: Equilon Seattle Terminal MTCA RD/RA Schedule Date: 3/2001	Task		Progress		Summary		Rolled Up Split		Rolled Up Progress		Project Summary			External Tasks
	Split		Milestone		Rolled Up Task		Rolled Up Milestone							