



**Maury Island Open Space Remediation
Annual Monitoring Report
May 2023 - May 2024**

Prepared by:

David Sizemore, Parks Operations Engineer

Reviewed by:

Lindsey Miller, Capital Project Manager Supervisor

Table of Contents

1. Introduction	3
2. Cleanup Action and Objectives	3
2.1 Capping	4
2.2 Vegetation Restoration (includes Interim Action)	4
2.3. Institutional Controls	4
2.3.1 Physical Measures.....	4
2.3.2 Educational Measures.....	4
3. Compliance Monitoring and Maintenance	4
3.1 Inspection Results	6
4. References	10
Figure 1: Vicinity and Location Map	12
Figure 2: Cleanup Action	13
Figure 3: Permanent Photo Points.....	14
Appendix A – Monitoring and Inspection Forms	16

1. Introduction

The Annual Monitoring Report describes the monitoring and maintenance of the Cleanup Action at the Maury Island Open Space, Washington State Department of Ecology (Ecology) Facility Site #2901216. The required monitoring and maintenance is described in the site’s Compliance Monitoring and Institutional Control Plan (King County, 2019).

The Cleanup Unit is 266 acres located on the southeast side of Maury Island in unincorporated King County (County), Washington (Figure 1), and lies within the larger Tacoma Smelter Plume. Sites within the Tacoma Smelter Plume often have surface soils with levels of arsenic, lead, and Polycyclic Aromatic Hydrocarbons (PAHs) that exceed safe levels for human exposure. A Remedial Investigation (RI) completed in 2014 (CDM Smith, 2014a). The Cleanup Action Plan was based on the RI, Feasibility Study (FS) (Parametrix, 2017), and Final Cleanup Action Plan (DCAP) (Ecology, 2019) prepared per the requirements of Agreed Order No. DE 8439 (dated January 31, 2013), between Ecology and King County.

2. Cleanup Action and Objectives

The proposed cleanup action involves vegetation restoration in contaminated areas, capping of contamination, and institutional controls including land use restrictions. The objective of the cleanup is to limit human exposure to the soil contaminants in a way that allows for continued use of the property as a park and avoids damage the valuable habitat within the park. The institutional controls and land use restrictions for the site are set in place to prohibit activities that may interfere with the cleanup action, operation and maintenance, or monitoring; or may result in the release of a hazardous substance that was contained as a part of the cleanup action.

Figure 2 shows the Cleanup Unit boundary, and general locations of the capping, vegetation restoration, and fencing. The cleanup is occurring in Phases. Table 1 summarizes the status of the cleanup phases.

Table 1: Status of the Cleanup Action Phases

Cleanup Action	Brief Summary	Completion Status	Date Completed (or Estimated Completion)
Vegetation Restoration (Acres 1 -3)	Interim Action including three acres of vegetation restoration.	Completed	December 2016
Trail Capping & Institutional Controls	Cap trails with 6-inches of gravel or with gravel/soil combination. Installed warning signage.	Completed	May 2020
Skeet Range Capping & Institutional Controls	Cap former skeet range with gravel to create a small parking area. Install warning signage and fencing.	Completed	October 2021
Vegetation Restoration (Acres 4-6)	Three acres of vegetation restoration.	Completed	March 2022
Vegetation Restoration (Acres 7-10) & Wetland Remediation	Four acres of vegetation restoration.	Final Design in Process	December 2024
Vegetation Restoration (Acres 11-13)	Three acres of vegetation restoration and limited wetland remediation to remove contaminated duff.	Starting October 2027	March 2028

Vegetation Restoration (Acres 14-16)	Three acres of vegetation restoration.	Starting October 2030	March 2031
---	--	--------------------------	------------

The Cleanup Actions that should be monitored and maintained are described in more detail below.

2.1 Capping

Many of the existing trails throughout the Cleanup Unit, that had levels of contaminants above the cleanup, were with three to four inches of compacted gravel, topped by three inches of a mineral soil combined with an additive that is used on baseball infields to bind the soil. Existing maintenance access roads and other trails roads will be capped with compacted gravel only.

In addition, Unit 5 a contaminated area large enough for a small parking area will be cleared and grubbed and capped with a minimum of six inches of compacted gravel.

2.2 Vegetation Restoration (includes Interim Action)

Limited soil removal will occur in Units 3c and 3e, along with clearing of invasive plants. The area will then be covered with three inches of a compost cap, and revegetated with native plants. The density of the mature native plantings will provide a physical barrier that will discourage foot traffic, and also provide especially valuable habitat through these units. Until the plantings mature, providing a physical barrier, the compost layer will provide a physical barrier that will reduce the potential for direct contact with underlying soils.

Limited removal of surface duff and some surface soil will also occur in the wetland in Unit 5. Only the minimum material necessary will be removed to bring lead levels below the Cleanup Level while protecting valuable habitat.

2.3. Institutional Controls

2.3.1 Physical Measures

A barrier fence will be installed around the gravel parking area to discourage access to the uncapped and contaminated portion of Unit 5. The barrier fence will be backed by dense thorny vegetation to further discourage access.

In addition, the vegetation in Units 3c and 3e will be planted especially dense to discourage access to the off-trail areas.

2.3.2 Educational Measures

Warning signs are being posted and maintained along trails throughout the Cleanup Unit to educate users to potential contaminants exposure risk if they leave the capped trail.

3. Compliance Monitoring and Maintenance

At regular intervals, the site is being evaluated and inspected to ensure the cleanup measures are functioning as intended. Evaluations and inspections are performed by King County staff at the intervals shown in Table 2 as part of the regular maintenance and operations activities in the park. Maintenance and repair activities are triggered based on observations made during these evaluations.

The Compliance Monitoring and Institutional Control Plan (King County, 2019) refers to “significant” repairs. If damage occurs to the cap, fencing, or other protective measure, to the point where park users are exposed to the contamination, the associated repair would be considered significant. For example, if

a large tree branch pierced a capped trail, exposing the contaminated soil underneath, that repair would be considered significant and should be described in the annual report. Routine maintenance such as leaf blowing or even minor repairs when the contaminated soil was never exposed are not considered significant.

As described in the Compliance Monitoring and Institutional Control Plan (King County, 2019) significant repairs should be performed by experienced contractors that are licensed and bonded. King County Parks reached out to Ecology in 2021 to future clarify this requirement, and confirmed that King County crews are also allowed to make significant repairs if the total repair cost is below \$90,000, which is the state threshold for when a government agency must use a contractor for capital construction work. The King County Job Order Contractor is also qualified to make significant repairs. Repairs should be conducted following the same procedures used during the cleanup action construction.

Table 2: Site Evaluation and Maintenance Schedule

Maintenance Item	Evaluation Frequency
Cap Inspection	Quarterly
Cap Repair or Maintenance	As-needed
Vegetation Restoration Inspections	Bi-Annually (spring and fall)
Vegetation Restoration Repairs or Maintenance	As-needed
Institutional Controls	
Physical Measures (Fences/Vegetative Barriers) Inspection	Quarterly
Physical Measures (Fences/Vegetative Barriers) Repair or Maintenance	As-needed
Educational Measures (Signs) Inspection	Quarterly
Education Measures (Signs) Repair or Maintenance	As-needed

3.1 Inspection Results

Permanent photo points (Figure 3) have been established so the site can be consistently observed over time; however, regular inspections are done for the entire the cleanup unit and are not limited to the permanent photo points only. The following photos show the current status of the site at the established permanent points.

Photo Point 1 on 4/19/2024

Trail Cap N of SW 260th St Looking North, -122.43373 47.3713



Photo Point 2 on 4/19/2024

Interim Action Revegetation Looking North, -122.4338 47.3696



Photo Point 3 on 4/19/2024

Trail Cap S of SW 260th St Near Lookout Looking West, -122.4336 47.3711

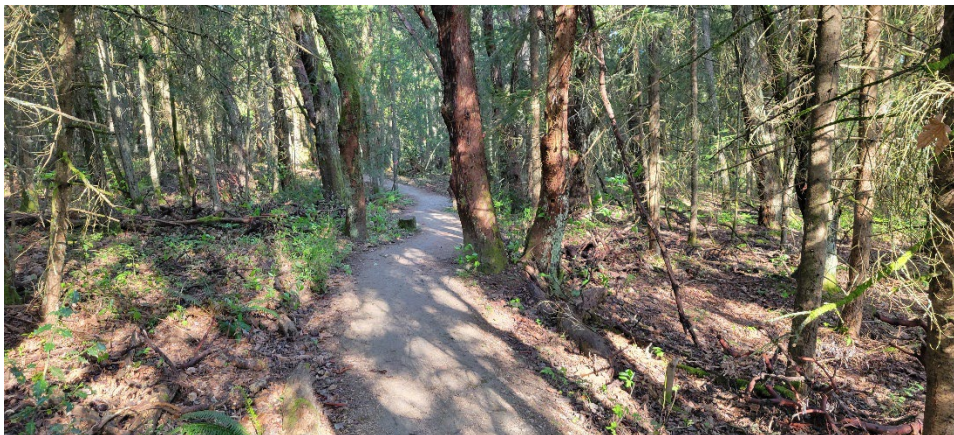


Photo Point 4 on 4/19/2024

Trail Cap W of Gravel Pit Staging Area Looking West, -122.4471 47.3648



Photo Point 5 on 4/19/2024

Stay Out of Forest Sign on Maintenance Road, -122.4441 47.3705



Photo Point 6 on 4/19/2024

Parking Area Cap

-122.4374 47.3712



Photo Point 7 on 4/24/2023

Parking Area Institutional Controls (Fencing and Signage) -122.4374 47.37095



Photo Point 8 on 4/13/2023

Revegetation Area from Phase 2

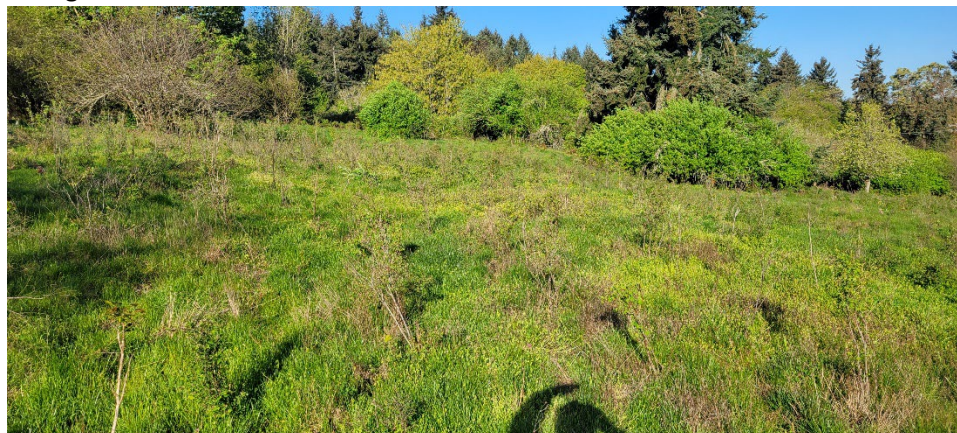
Side Road South of SW 260th St -122.4372 47.3713



Photo Point 9 on 4/24/2023

Revegetation Area from Phase 2

-122.4340 47.3708



Inspection forms have been completed and are in Appendix A. In summary, except for the ongoing weed maintenance at the interim action site, no other additional maintenance or repairs has been needed.

4. References

CDM Smith. 2014a. Final, Remedial Investigation, Maury Island Open Space Property, Maury Island, Washington. Project No. 19897-99064. June 2.

Ecology. 2013. Effective Date of Agreed order No. 8439 for Remedial Investigation/Feasibility Study and Draft Cleanup Action Plan, Maury Island Open Space Site, Maury Island, King County, WA. January 2013.

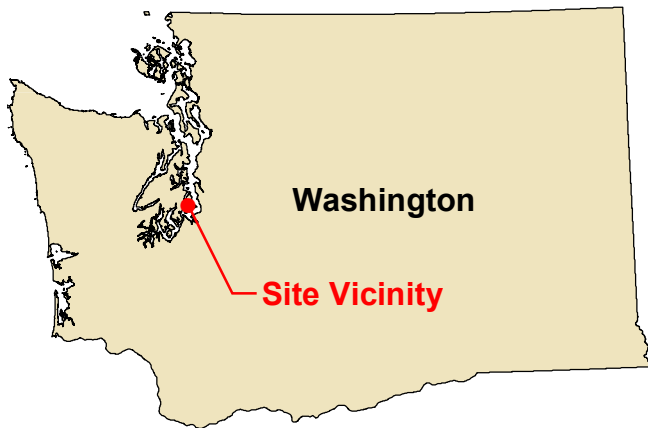
Parametrix. 2017. Draft Final Feasibility Study, Maury Island Open Space Property, Maury Island, Washington. Project No. 233-1521-175. April 17.

King County. 2019. Maury Island Open Space Remediation Compliance Monitoring and Institutional Control Plan. June 2019. Available to download at:

<https://apps.ecology.wa.gov/gsp/CleanupSiteDocuments.aspx?csid=1532>

Ecology. 2019. Final Cleanup Action Plan for Maury Island Open Space Property. November 28, 2019.

Available to download at: <https://apps.ecology.wa.gov/gsp/CleanupSiteDocuments.aspx?csid=1532>



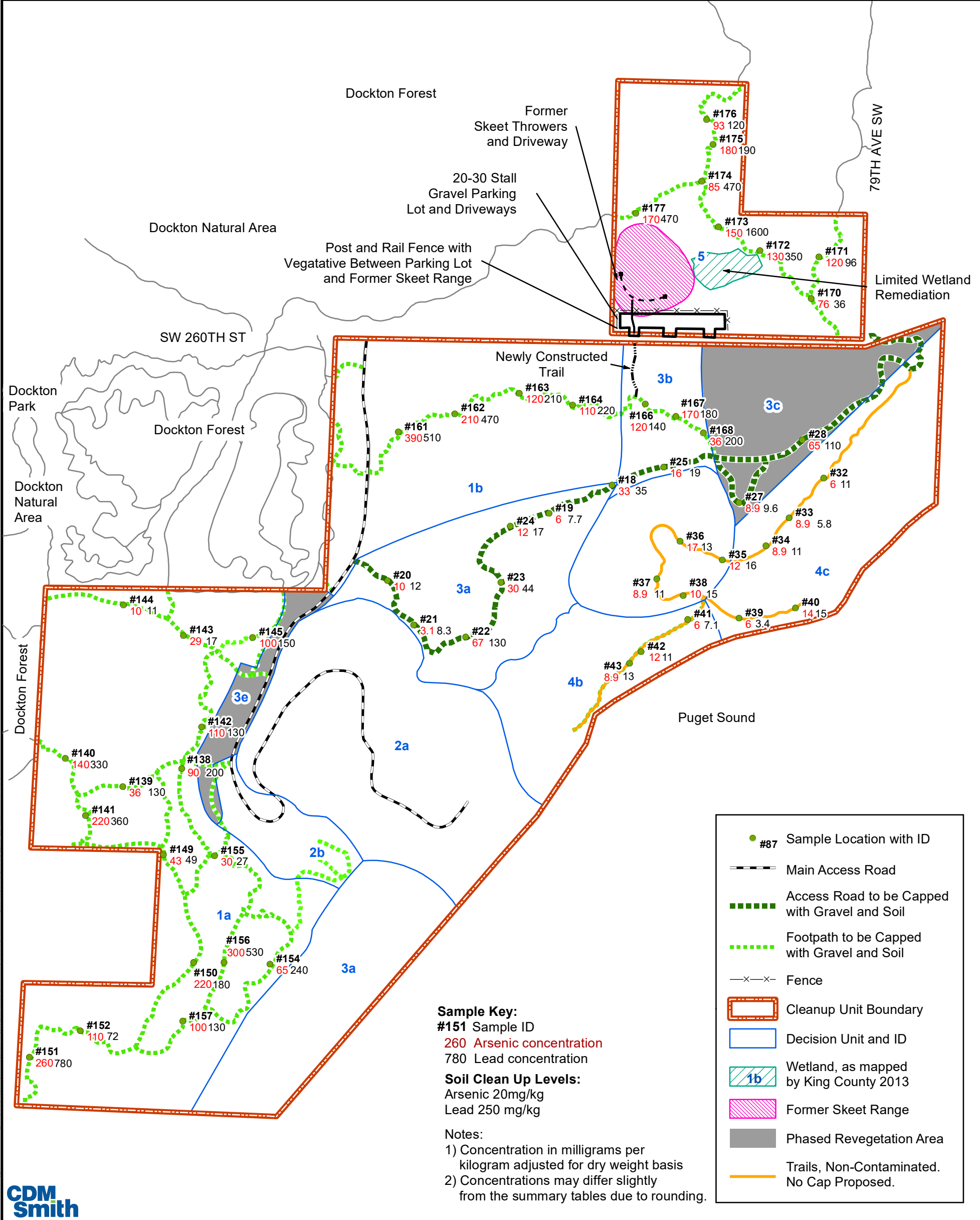
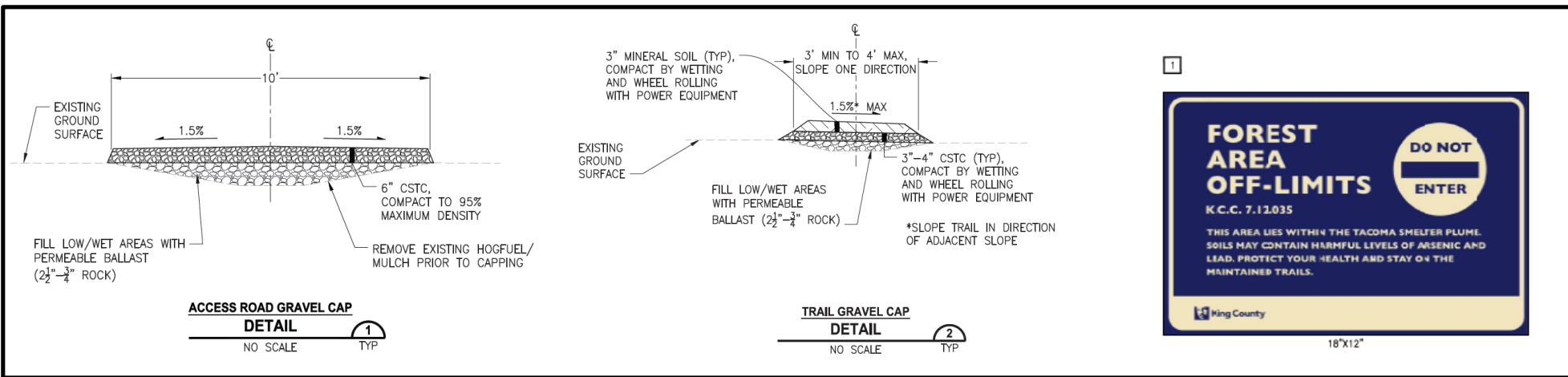
Service Layer Credits: Sources: Esri, HERE, DeLorme, Intermap, increment P Corp., GEBCO, USGS, FAO, NPS, NRCAN, GeoBase, IGN, Kadaster NL, Ordnance Survey, Esri Japan, METI, Esri China (Hong Kong), swisstopo, MapmyIndia, © OpenStreetMap contributors, and the GIS User Community



Parametrix

FIGURE 1
VICINITY AND LOCATION MAP
 Maury Island Open Space Property
 Compliance Monitoring Plan

Document Path: \\US\PCO\Projects\Clients\1521_KlarCo\1521_KlarCo\1521_Maury_Cleanup_Action_Plan\DCAP_Elmsura\Figure_01_VicinityAndLocation_6-29-17.mxd



Parametrix

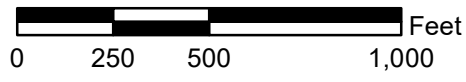


FIGURE 2
CLEANUP ACTION
Maury Island Open Space Property
Compliance Monitoring Plan

Figure 3: Permanent Photo Points





Appendix A – Monitoring and Inspection Forms

Quarterly Public Safety and General Maintenance Inspection Form

Site Name: Maury Island Open Space (a.k.a. Maury Island Natural Area)

Location: Maury Island, WA

Date of Remediation: 2016 / 2020

Date of Inspection: 09/11//2023

Evaluator(s): David Sizemore

2Permanent Photo Points:

<u>Point</u>	<u>Subject</u>	<u>Location</u>	<u>GPS coordinates</u>
1.	Trail Cap N of SW 260 th St	Looking North	-122.4336 47.3712
2.	Interim Action Revegetation	Looking North	-122.4341 47.3696
3.	Trail Cap S of SW 260 th St Near Lookout	Looking West	-122.4337 47.3698
4.	Trail Cap W of Gravel Pit Staging Area	Looking West	-122.4466 47.3648
5.	<i>Stay Out of Forest</i> Sign on Maintenance Road		-122.4438 47.37051
6.	Parking Area Cap	Looking Southeast	-122.4375 47.37121
7.	Parking Area Fencing and Signage	Looking East	-122.43712 47.37095
8.	Revegetation by Side Road S of SW 260 th St	Looking S	-122.4339 47.37080
9.	Revegetation S of SW 260 th St by fenceline	looking SW	-122.43366 47.3704

A. Institutional Controls (Fences, Signs, Vegetative Barriers)

- A1. Are fences/signs/vegetative barriers intact? Yes No
- A2. If fences/signs/vegetative barriers are damaged, are there risks to public safety? Yes No
- A3. Is damage affecting effectiveness of remediation work? Yes No
- A4. Is the condition of the fences/signs/vegetative barriers leading to undesirable site access by park users? Yes No

Provide a brief description of fences/signs/vegetative barriers damage, if applicable:
The "Stay Out of Forest": signs are intact, There is some graffiti on the signs but the signs are easily readable.

Describe proposed maintenance to correct damage to fences/signs/vegetative barriers, if applicable:

Continue to clean off the graffiti. The signs are metal and are easily cleanable.

Attach digital photo(s) of fences/signs/vegetative barriers before condition and after correction and record GPS coordinates:

N/A

B. Capping

- B1. Are trails, maintenance roads, and parking area caps in good condition? Yes No
- B2. If caps are damaged are there risks to public safety? Yes No
 Yes No
- B3. Is damage or poor condition affecting reclamation work? Yes No

Provide a brief description of trails, maintenance roads, and parking area caps if applicable:

Trail caps are in very good condition. The trail caps provide a firm pathway. No debris or leaves on trails.

Describe proposed maintenance to correct damage to trails, maintenance roads, and parking area caps, if applicable:

Continue to perform inspections of trails and maintenance roads. Keep the trails clear of debris.

Attach digital photo(s) of fences/signs/vegetative barriers current condition and after correction condition, if applicable, and record GPS coordinates:

N/A No corrections needed

C. Vegetation Restoration Areas

- C1. Are weedy, undesirable species or noxious species present? Yes No
- C2. Are these species dominating the native revegetation plant community(ies)? Yes No
- C3. Is maintenance recommended for weed control? Yes No
- C4. Are the planted native species thriving and healthy? Yes No
- C5. Is maintenance recommended to maintain health of native revegetation plant species? Yes No

Provide identification of weedy species and noxious weeds, if possible.
Himalayan blackberry, scotch broom, thistle, holly, poison oak

Describe proposed maintenance to remove weeds and/or maintain the health of the native revegetation plant species, if applicable:

Monthly removal of blackberry, scotch broom, and other weeds should continue during the growing season until native plants are of sufficient size to shade of invasives.

Attach digital photo(s) of revegetation areas current condition and after correction condition, if applicable, and record GPS coordinates: Weeding will start in May for the growing season. Photos are provided.

Quarterly Summary of Public Safety and General Maintenance

Site Name: Maury Island Open Space (a.k.a. Maury Island Natural Area)
Location: Maury Island, WA
Date of Inspection: 04/13/2023
Evaluator(s): David Sizemore

Evaluation Area	Public Safety Concerns [Y/N]	Describe and Categorize Remediation Concerns and Maintenance Performed/Scheduled		
		None [√]	Routine [√]	Critical [√]
A. Fences, Signs, Vegetative Barriers	None	None		
B. Caps	None	None		
C. Vegetation Restoration	None		Routine weeding	

Quarterly Public Safety and General Maintenance Inspection Form

Site Name: Maury Island Open Space (a.k.a. Maury Island Natural Area)

Location: Maury Island, WA

Date of Remediation: 2016 / 2020

Date of Inspection: 10/30/2023

Evaluator(s): David Sizemore

2Permanent Photo Points:

<u>Point</u>	<u>Subject</u>	<u>Location</u>	<u>GPS coordinates</u>
1.	Trail Cap N of SW 260 th St	Looking North	-122.4339 47.3714
2.	Interim Action Revegetation	Looking North	-122.4338 47.3696
3.	Trail Cap S of SW 260 th St Near Lookout	Looking West	-122.4338 47.3698
4.	Trail Cap W of Gravel Pit Staging Area	Looking West	-122.4469 47.3648
5.	<i>Stay Out of Forest</i> Sign on Maintenance Road		-122.4434 47.3704
6.	Parking Area Cap	Looking Southeast	-122.4375 47.3712
7.	Parking Area Fencing and Signage	Looking East	-122.4374 47.37099
8.	Revegetation by Side Road S of SW 260 th St	Looking S	-122.4339 47.37080
9.	Revegetation S of SW 260 th St by fenceline	looking SW	-122.43366 47.3708

A. Institutional Controls (Fences, Signs, Vegetative Barriers)

- A1. Are fences/signs/vegetative barriers intact? Yes No
- A2. If fences/signs/vegetative barriers are damaged, are there risks to public safety? Yes No
- A3. Is damage affecting effectiveness of remediation work? Yes No
- A4. Is the condition of the fences/signs/vegetative barriers leading to undesirable site access by park users? Yes No

Provide a brief description of fences/signs/vegetative barriers damage, if applicable:
The "Stay Out of Forest": signs are intact, There is some graffiti on the signs but the signs are easily readable.

Describe proposed maintenance to correct damage to fences/signs/vegetative barriers, if applicable:

Continue to clean off the graffiti. The signs are metal and are easily cleanable.

Attach digital photo(s) of fences/signs/vegetative barriers before condition and after correction and record GPS coordinates:

N/A

B. Capping

- B1. Are trails, maintenance roads, and parking area caps in good condition? Yes No
- B2. If caps are damaged are there risks to public safety? Yes No
 Yes No
- B3. Is damage or poor condition affecting reclamation work? Yes No

Provide a brief description of trails, maintenance roads, and parking area caps if applicable:

Trail caps are in very good condition. The trail caps provide a firm pathway. No debris or leaves on trails. The new parking area off of SW 260th St. (not part of protective cap) is closed due to vandalism.

Describe proposed maintenance to correct damage to trails, maintenance roads, and parking area caps, if applicable:

Continue to perform inspections of trails and maintenance roads. Keep the trails clear of debris.

Attach digital photo(s) of fences/signs/vegetative barriers current condition and after correction condition, if applicable, and record GPS coordinates:

N/A No corrections needed

C. Vegetation Restoration Areas

- C1. Are weedy, undesirable species or noxious species present? Yes No
- C2. Are these species dominating the native revegetation plant community(ies)? Yes No
- C3. Is maintenance recommended for weed control? Yes No
- C4. Are the planted native species thriving and healthy? Yes No
- C5. Is maintenance recommended to maintain health of native revegetation plant species? Yes No

Provide identification of weedy species and noxious weeds, if possible.
Himalayan blackberry, scotch broom, thistle, holly, poison oak

Describe proposed maintenance to remove weeds and/or maintain the health of the native revegetation plant species, if applicable:

Monthly removal of blackberry, scotch broom, and other weeds should continue during the growing season until native plants are of sufficient size to shade of invasives. Plants are entering the dormant phase and many had changed color.

Attach digital photo(s) of revegetation areas current condition and after correction condition, if applicable, and record GPS coordinates: Weeding will start in May for the growing season. Photos are provided.

Quarterly Summary of Public Safety and General Maintenance

Site Name: Maury Island Open Space (a.k.a. Maury Island Natural Area)

Location: Maury Island, WA

Date of Inspection: 04/13/2023

Evaluator(s): David Sizemore

Evaluation Area	Public Safety Concerns [Y/N]	Describe and Categorize Remediation Concerns and Maintenance Performed/Scheduled		
		None [√]	Routine [√]	Critical [√]
A. Fences, Signs, Vegetative Barriers	None	None		
B. Caps	None	None		
C. Vegetation Restoration	None		Routine weeding	

Quarterly Public Safety and General Maintenance Inspection Form

Site Name: Maury Island Open Space (a.k.a. Maury Island Natural Area)

Location: Maury Island, WA

Date of Remediation: 2016 / 2020

Date of Inspection: 02/08//2024

Evaluator(s): David Sizemore

Permanent Photo Points:

<u>Point</u>	<u>Subject</u>	<u>Location</u>	<u>GPS coordinates</u>
1.	Trail Cap N of SW 260 th St	Looking North	-122.4336 47.3710
2.	Interim Action Revegetation	Looking North	-122.4338 47.3698
3.	Trail Cap S of SW 260 th St Near Lookout	Looking North	-122.4362 47.3695
4.	Trail Cap W of Gravel Pit Staging Area	Looking East	-122.4467 47.3648
5.	<i>Stay Out of Forest</i> Sign on Maintenance Road		-122.4434 47.3704
6.	Parking Area Cap	Looking East	-122.4373 47.3711
7.	Parking Area Fencing and Signage	Looking NE	-122.4372 47.37109
8.	Revegetation by Side Road S of SW 260 th St	Looking E	-122.4340 47.3708
9.	Revegetation S of SW 260 th St by fenceline	Looking E	-122.4343 47.3703

A. Institutional Controls (Fences, Signs, Vegetative Barriers)

- A1. Are fences/signs/vegetative barriers intact? Yes No
- A2. If fences/signs/vegetative barriers are damaged, are there risks to public safety? Yes No
- A3. Is damage affecting effectiveness of remediation work? Yes No
- A4. Is the condition of the fences/signs/vegetative barriers leading to undesirable site access by park users? Yes No

Provide a brief description of fences/signs/vegetative barriers damage, if applicable:
The "Stay Out of Forest": signs are intact, There is some graffiti on the signs but the signs are easily readable.

Describe proposed maintenance to correct damage to fences/signs/vegetative barriers, if applicable:

Continue to clean off the graffiti. The signs are metal and are easily cleanable.

Attach digital photo(s) of fences/signs/vegetative barriers before condition and after correction and record GPS coordinates:

N/A

B. Capping

- B1. Are trails, maintenance roads, and parking area caps in good condition? Yes No
- B2. If caps are damaged are there risks to public safety? Yes No
 Yes No
- B3. Is damage or poor condition affecting reclamation work? Yes No

Provide a brief description of trails, maintenance roads, and parking area caps if applicable:

Trail caps are in very good condition. The trail caps provide a firm pathway. No debris or leaves on trails. Parking lot was in great condition.

Describe proposed maintenance to correct damage to trails, maintenance roads, and parking area caps, if applicable:

Continue to perform inspections of trails and maintenance roads. Keep the trails clear of debris.

Attach digital photo(s) of fences/signs/vegetative barriers current condition and after correction condition, if applicable, and record GPS coordinates:

N/A No corrections needed

C. Vegetation Restoration Areas

- C1. Are weedy, undesirable species or noxious species present? Yes No
- C2. Are these species dominating the native revegetation plant community(ies)? Yes No
- C3. Is maintenance recommended for weed control? Yes No
- C4. Are the planted native species thriving and healthy? Yes No
- C5. Is maintenance recommended to maintain health of native revegetation plant species? Yes No

Provide identification of weedy species and noxious weeds, if possible.
Himalayan blackberry, scotch broom, thistle, holly, poison oak

Describe proposed maintenance to remove weeds and/or maintain the health of the native revegetation plant species, if applicable:

Monthly removal of blackberry, scotch broom, and other weeds should continue during the growing season until native plants are of sufficient size to shade of invasives. Plants are currently in the dormant phase and many had changed color.

Attach digital photo(s) of revegetation areas current condition and after correction condition, if applicable, and record GPS coordinates: Weeding will start in May for the growing season. Photos are provided.

Quarterly Summary of Public Safety and General Maintenance

Site Name: Maury Island Open Space (a.k.a. Maury Island Natural Area)

Location: Maury Island, WA

Date of Inspection: 02/08/2024

Evaluator(s): David Sizemore

Evaluation Area	Public Safety Concerns [Y/N]	Describe and Categorize Remediation Concerns and Maintenance Performed/Scheduled		
		None [√]	Routine [√]	Critical [√]
A. Fences, Signs, Vegetative Barriers	None	None		
B. Caps	None	None		
C. Vegetation Restoration	None		Routine weeding	

Quarterly Public Safety and General Maintenance Inspection Form

Site Name: Maury Island Open Space (a.k.a. Maury Island Natural Area)

Location: Maury Island, WA

Date of Remediation: 2016 / 2020

Date of Inspection: 04/19/2024

Evaluator(s): David Sizemore

Permanent Photo Points:

<u>Point</u>	<u>Subject</u>	<u>Location</u>	<u>GPS coordinates</u>
1.	Trail Cap N of SW 260 th St	Looking North	-122.4337 47.3713
2.	Interim Action Revegetation	Looking North	-122.4338 47.3696
3.	Trail Cap S of SW 260 th St Near Lookout	Looking West	-122.4336 47.3711
4.	Trail Cap W of Gravel Pit Staging Area	Looking West	-122.4471 47.3648
5.	<i>Stay Out of Forest</i> Sign on Maintenance Road		-122.4441 47.3705
6.	Parking Area Cap	Looking Southeast	-122.4374 47.3712
7.	Parking Area Fencing and Signage	Looking East	-122.4374 47.37095
8.	Revegetation by Side Road S of SW 260 th St	Looking S	-122.4372 47.3713
9.	Revegetation S of SW 260 th St by fenceline	looking SW	-122.4340 47.3708

A. Institutional Controls (Fences, Signs, Vegetative Barriers)

- A1. Are fences/signs/vegetative barriers intact? Yes No
- A2. If fences/signs/vegetative barriers are damaged, are there risks to public safety? Yes No
- A3. Is damage affecting effectiveness of remediation work? Yes No
- A4. Is the condition of the fences/signs/vegetative barriers leading to undesirable site access by park users? Yes No

Provide a brief description of fences/signs/vegetative barriers damage, if applicable:
The "Stay Out of Forest": signs are intact, There is some graffiti on the signs but the signs are easily readable.

Describe proposed maintenance to correct damage to fences/signs/vegetative barriers, if applicable:

Continue to clean off the graffiti. The signs are metal and are easily cleanable.

Attach digital photo(s) of fences/signs/vegetative barriers before condition and after correction and record GPS coordinates:

N/A

B. Capping

- B1. Are trails, maintenance roads, and parking area caps in good condition? Yes No
- B2. If caps are damaged are there risks to public safety? Yes No
 Yes No
- B3. Is damage or poor condition affecting reclamation work? Yes No

Provide a brief description of trails, maintenance roads, and parking area caps if applicable:

Trail caps are in very good condition. The trail caps provide a firm pathway. No debris or leaves on trails.

Describe proposed maintenance to correct damage to trails, maintenance roads, and parking area caps, if applicable:

Continue to perform inspections of trails and maintenance roads. Keep the trails clear of debris.

Attach digital photo(s) of fences/signs/vegetative barriers current condition and after correction condition, if applicable, and record GPS coordinates:

N/A No corrections needed

C. Vegetation Restoration Areas

- C1. Are weedy, undesirable species or noxious species present? Yes No
- C2. Are these species dominating the native revegetation plant community(ies)? Yes No
- C3. Is maintenance recommended for weed control? Yes No
- C4. Are the planted native species thriving and healthy? Yes No
- C5. Is maintenance recommended to maintain health of native revegetation plant species? Yes No

Provide identification of weedy species and noxious weeds, if possible.

Himalayan blackberry, scotch broom, thistle, holly, poison oak

Describe proposed maintenance to remove weeds and/or maintain the health of the native revegetation plant species, if applicable:

Monthly removal of blackberry, scotch broom, and other weeds should continue during the growing season until native plants are of sufficient size to shade of invasives. Plants are entering the dormant phase and many had changed color.

Attach digital photo(s) of revegetation areas current condition and after correction condition, if applicable, and record GPS coordinates: Weeding will start in May for the growing season. Photos are provided.

Quarterly Summary of Public Safety and General Maintenance

Site Name: Maury Island Open Space (a.k.a. Maury Island Natural Area)
Location: Maury Island, WA
Date of Inspection: 04/19/2024
Evaluator(s): David Sizemore

Evaluation Area	Public Safety Concerns [Y/N]	Describe and Categorize Remediation Concerns and Maintenance Performed/Scheduled		
		None [√]	Routine [√]	Critical [√]
A. Fences, Signs, Vegetative Barriers	None	None		
B. Caps	None	None		
C. Vegetation Restoration	None		Routine weeding	