

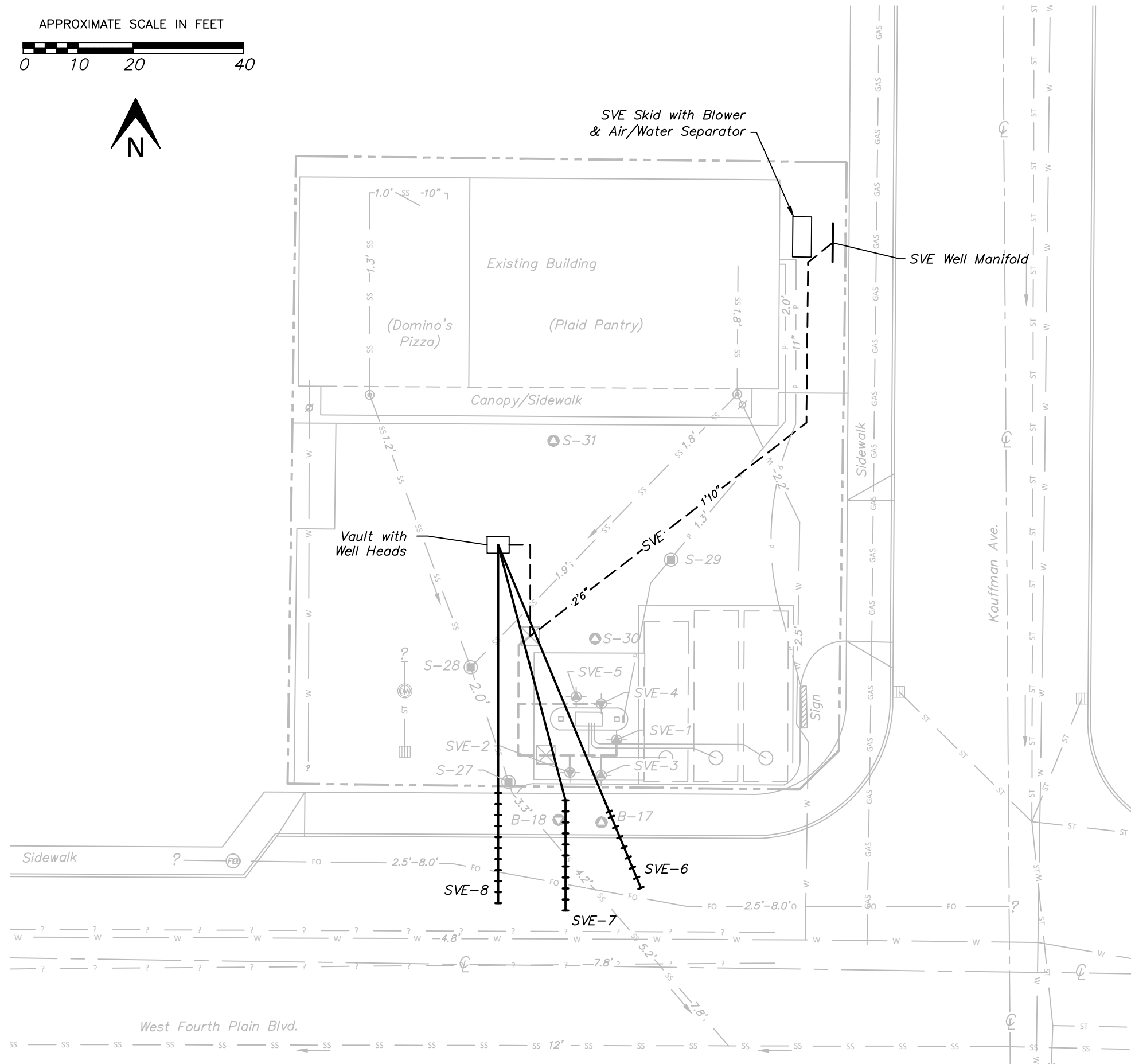
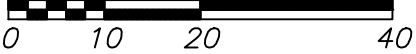
C:\Users\Josh\Desktop\Autocad Files\EES-Autocad\1179-04\2021\Jan 2021\1179-04\_BM-Data-010521.dwg

## LEGEND

	Property Boundary
	Roadway Centerline
	Catch Basin
	Dry Well
	Vault
	Inactive Shallow SVE Well (Screened 5–10' bgs)
	Inactive Deep SVE Well (Screened 15–20' bgs)
	Utility Vapor Monitoring Well (Screened at Various Shallow Depths in Trench Backfill)
	Shallow Vapor Monitoring Well (Screened 5–10' bgs)
	Deep Vapor Monitoring Well (Screened 15–20' bgs)
	SVE-1 through SVE-5 Conveyance Piping
	SVE Conveyance Piping
	Water Line
	Sanitary Sewer & Flow Direction
	Storm Sewer & Flow Direction
	Power
	Natural Gas
	Unknown Utility
	Fiber Optic
	Arrows Indicate Flow Direction Where Known
	Approximate Utility Depths Indicated Where Known (Feet)
	SVE Well Casing
	SVE Screens

SITE FEATURES ARE APPROXIMATE.

APPROXIMATE SCALE IN FEET



DATE:	9-21-22	PROJECT NO.	1179-04
FILE:	1179-04	FIGURE NO.	1
DRAWN:	JJT		
APPROVED:	DBP		

SVE SYSTEM LAYOUT

PLAID PANTRY #112  
1002 W. FOURTH PLAIN BLVD.  
VANCOUVER, WA.

**EES** Environmental  
Consulting, Inc.  
514 NW 11th Ave, Suite 209 Portland, Oregon 97209  
(503) 847-2740 ees-environmental.com