



Public Participation Plan: Hexcel Corporation

**19819 84th Ave S.
Kent, WA 98032**

Hazardous Waste & Toxics Reduction Program

Washington State Department of Ecology
Northwest Region Office
Shoreline, Washington

August 2024 | Publication 24-04-038

Publication Information

This document is available on the Department of Ecology's website at:

<https://apps.ecology.wa.gov/publications/SummaryPages/2404038.html>.

Cover photo

This photo was taken by the Washington State Department of Ecology.

Related information

- Facility site ID: 53292855
- Cleanup site ID: 2624
- ecology.wa.gov/hexcel

Contact Information

Hazardous Waste & Toxics Reduction Program

Washington State Department of Ecology
Northwest Region Office
P.O. Box 330316
Shoreline, WA 98133-9716

Website: [Washington State Department of Ecology](https://www.ecy.wa.gov)¹

Christa Colouzis, Corrective Action Supervisor

Telephone: 425-324-1850

Email: christa.colouzis@ecy.wa.gov

Val Cramer, Site Manager

Telephone: 425-698-5539

Email: valerie.cramer@ecy.wa.gov

ADA Accessibility

The Department of Ecology is committed to providing people with disabilities access to information and services by meeting or exceeding the requirements of the Americans with Disabilities Act (ADA), Sections 504 and 508 of the Rehabilitation Act, and Washington State Policy #188.

To request an ADA accommodation, contact Ecology by phone at 360-407-6700 or email at hwtrpubs@ecy.wa.gov. For Washington Relay Service or TTY call 711 or 877-833-6341. Visit [Ecology's website](https://www.ecy.wa.gov)² for more information.

¹ www.ecology.wa.gov/contact

² www.ecology.wa.gov/accessibility

ਪੰਜਾਬੀ (Punjabi)

ਵਾਸ਼ਿੰਗਟਨ ਦੇ ਕੈਂਟ ਸ਼ਹਿਰ ਵਿੱਚ Hexcel Corporation ਦੀ ਸਾਈਟ ਦੀ ਵਾਤਾਵਰਣਕ ਸਫਾਈ ਦੇ ਬਾਰੇ Department of Ecology (ਡਿਪਾਰਟਮੈਂਟ ਆਫ ਈਕੋਲੋਜੀ) ਵੱਲੋਂ ਇੱਕ ਜਨਤਕ ਵਿਚਾਰ ਸੈਸ਼ਨ ਦਾ ਆਯੋਜਨ ਕੀਤਾ ਜਾ ਰਿਹਾ ਹੈ। ਇਸ ਦਸਤਾਵੇਜ਼ ਨੂੰ ਪੰਜਾਬੀ ਭਾਸ਼ਾ ਵਿੱਚ ਪ੍ਰਾਪਤ ਕਰਨ ਲਈ ਜਾਂ ਆਪਣੀ ਭਾਸ਼ਾ ਵਿੱਚ ਹੋਰ ਜਾਣਕਾਰੀ ਲੈਣ ਦੇ ਲਈ, ਕਿਰਪਾ ਕਰਕੇ christa.colouzis@ecy.wa.gov ਨੂੰ ਈਮੇਲ ਕਰੋ ਜਾਂ 425-324-1850 'ਤੇ ਕਾਲ ਕਰੋ।

ਪੰਜਾਬੀ ਵਿੱਚ Hexcel Corporation 'ਤੇ ਸਾਡਾ ਜਨਤਕ ਨੋਟਿਸ ਪੜ੍ਹੋ:



Русский (Russian)

Департамент экологии принимает комментарии общественности относительно действий по улучшению окружающей среды в Hexcel Corporation в г. Kent, штат Вашингтон. Чтобы получить русскоязычную копию данного документа или дополнительную информацию, обращайтесь по адресу электронной почты Christa.Colouzis@ecy.wa.gov или по телефону 425-324-1850.

Прочтите наше публичное уведомление о Hexcel Corporation на русском языке:



Español (Spanish)

El Departamento de Ecología está anunciando el período de comentarios públicos relacionado a la limpieza ambiental del sitio Hexcel Corporation. Para obtener este documento o más información sobre este sitio en español, favor de comunicarse con Christa Colouzis al 360-324-1850 o Christa.Colouzis@ecy.wa.gov.

Lea nuestro aviso público sobre Hexcel Corporation en Español:



Tiếng Việt (Vietnamese)

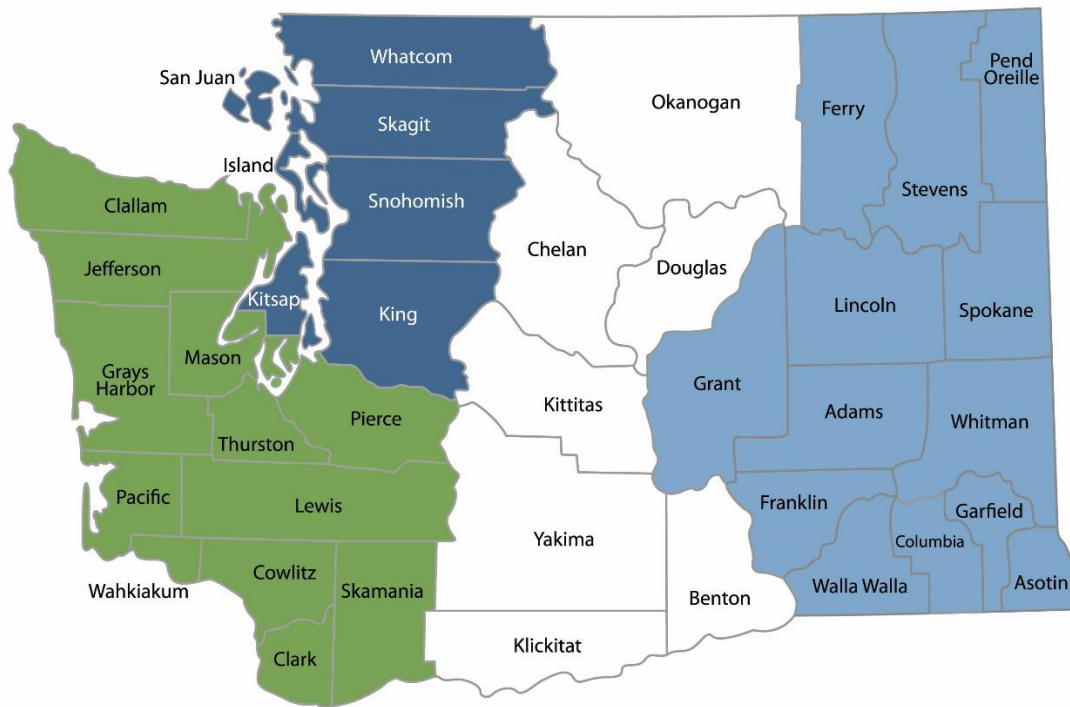
Bộ Môi Sinh đang tổ chức một giai đoạn trưng cầu dân ý về việc làm sạch môi trường tại địa điểm Hexcel Corporation ở Kent, Washington. Để yêu cầu tài liệu này bằng tiếng Việt hoặc để biết thêm thông tin bằng ngôn ngữ của quý vị, xin vui lòng gửi email tới Christa.Colouzis@ecy.wa.gov hoặc gọi tới số 425-324-1850.

Đọc thông báo công chúng của chúng tôi về Công ty Hexcel bằng tiếng Việt:



Department of Ecology's Region Offices

Map of Counties Served



Southwest Region 360-407-6300	Northwest Region 206-594-0000	Central Region 509-575-2490	Eastern Region 509-329-3400
---	---	---------------------------------------	---------------------------------------

Region	Counties served	Mailing Address	Phone
Southwest	Clallam, Clark, Cowlitz, Grays Harbor, Jefferson, Mason, Lewis, Pacific, Pierce, Skamania, Thurston, Wahkiakum	PO Box 47775 Olympia, WA 98504	360-407-6300
Northwest	Island, King, Kitsap, San Juan, Skagit, Snohomish, Whatcom	PO Box 330316 Shoreline, WA 98133	206-594-0000
Central	Benton, Chelan, Douglas, Kittitas, Klickitat, Okanogan, Yakima	1250 W Alder St Union Gap, WA 98903	509-575-2490
Eastern	Adams, Asotin, Columbia, Ferry, Franklin, Garfield, Grant, Lincoln, Pend Oreille, Spokane, Stevens, Walla Walla, Whitman	4601 N Monroe Spokane, WA 99205	509-329-3400
Headquarters	Across Washington	PO Box 46700 Olympia, WA 98504	360-407-6000

Public Participation Plan

**Hexcel Corporation
19819 84th Ave S.
Kent, WA 98032**

Hazardous Waste & Toxics Reduction Program
Washington State Department of Ecology
Northwest Region Office
Shoreline, Washington

August 2024 | Publication 24-04-038



Table of Contents

List of Figures	7
Public Involvement in Contamination Cleanup	8
Site contacts.....	8
Public Participation Grants.....	9
State and Federal Cleanup Laws	10
Model Toxics Control Act	10
Resource Conservation and Recovery Act.....	12
State Environmental Policy Act	12
Site Information	13
Basic information	13
Site history	14
Contamination	15
Cleanup process	15
Demographics	17
People of color and minority population	18
English language proficiency	19
Outreach activities and language access.....	19
Public Participation Activities	20
How we share information with the community	20
How to share information with us	22
Americans with Disabilities Act	22
Plan Amendments	23
List of Abbreviations and Acronyms	24

List of Figures

Figure 1: Washington's Formal Cleanup Process Infographic.....	11
Figure 2. Location of Kent, Washington	13
Figure 3: Google Map showing the Hexcel facility in Kent, Washington	13
Figure 4: Location of Hexcel Corporation and BSB Diversified in Kent, Washington	14
Figure 5: Formal Cleanup Process (English).....	16
Figure 6: Formal Cleanup Process (Russian).....	16
Figure 7: Formal Cleanup Process (Spanish).....	17
Figure 8: Formal Cleanup Process (Vietnamese)	17
Figure 9: Map showing one-mile radius for environmental justice indicators	18

Public Involvement in Contamination Cleanup

Ecology (we) developed this public participation plan (plan) in cooperation with the Hexcel Corporation (Hexcel). This plan is for Hexcel’s facility located at 19819 84th Ave S., Kent, Washington, 98032.

This plan describes how we involve the public in investigating contamination and selecting cleanup activities during the corrective action process.

We encourage the public to:

- Learn about and get involved in decision-making opportunities.
- Provide input during the investigation and cleanup of contamination.

This plan is for corrective action (cleanup). Public participation activities are coordinated between Hexcel and Ecology. We must make sure the cleanup and the outreach comply with Washington State’s dangerous waste regulations and Model Toxics Control Act (MTCA) requirements. We will hold public comment periods and other public outreach during the cleanup process.

Site contacts

To be included in the site record, comments about the cleanup process must be submitted during comment periods. Questions and informal comments or information about the site’s history are welcome anytime.

Ecology

Washington State Department of Ecology

Northwest Region Office

P.O. Box 330316

Shoreline, WA 98133 -9716

Val Cramer, Site Manager

Telephone: 425-698-5539

Email: valerie.cramer@ecy.wa.gov

Christa Colouzis, Corrective Action Supervisor

Telephone: 425-324-1850

Email: christa.colouzis@ecy.wa.gov

Potentially Liable Party (PLP)

Hexcel Corporation

Attn: Corporate Communications

281 Tresser Blvd.

Stamford, CT 06901

Email: communications@hexcel.com

Public Participation Grants

Grants may be available to neighborhood committees, non-profits, and other groups. For contaminated sites, these funds can be used to:

- Hire an expert to help interpret technical information.³
- Conduct activities to increase understanding and participation in the cleanup process.

For more information about public participation grants, please contact:

Laura Busby, Grant Manager
Email: laura.busby@ecy.wa.gov
Telephone: 360-280-5088

Jill Krumlauf, Grant Manager
Email: jill.krumlauf@ecy.wa.gov
Telephone: 360-790-577

You may also visit the [Public Participation Grant webpage](#).⁴

³ Ecology currently does not have a citizen technical advisor for providing technical assistance to citizens on issues related to the investigation and cleanup of the site.

⁴ www.ecology.wa.gov/ppgrants

State and Federal Cleanup Laws

In Washington State, we use MTCA and other regulations for cleanup activities on properties that treated, stored, or disposed of hazardous chemicals. These cleanups, called **corrective actions**, are required under the federal Resource Conservation and Recovery Act (RCRA). The U.S. Environmental Protection Agency (EPA) maintains and enforces environmental standards across the United States. EPA allows Ecology to use MTCA, not RCRA, for cleanup activities in Washington State.

This public participation plan is required under MTCA. MTCA sets standards to ensure that cleanups in our state protect human health and the environment.

Model Toxics Control Act

MTCA began as a grassroots citizen's initiative in 1988. We started using it in our state to clean up contaminated sites in 1989. Under MTCA, a current or past property owner or operator may need to pay to clean up contamination on or coming from their property, until levels are safe for human health and the environment.

Under MTCA, we oversee cleanups and issue [regulations and guidance](#)⁵ for them. We investigate reports of property contamination. If the contamination is a threat to human health or the environment, we put the property on the Hazardous Sites List and the cleanup process begins.

Public participation is an important part of the MTCA process. Participation needs are determined for each cleanup site by the level of public interest and the risk posed by the contamination. People who live near the site, community groups, businesses, government entities, and other interested parties can comment on the cleanup process.

Under MTCA, the cleanup process happens in phases. Many of the phases have time for the public to review and comment on cleanup documents. See [Washington's Formal Cleanup Process](#)⁶ for more information (Figure 1, next page).

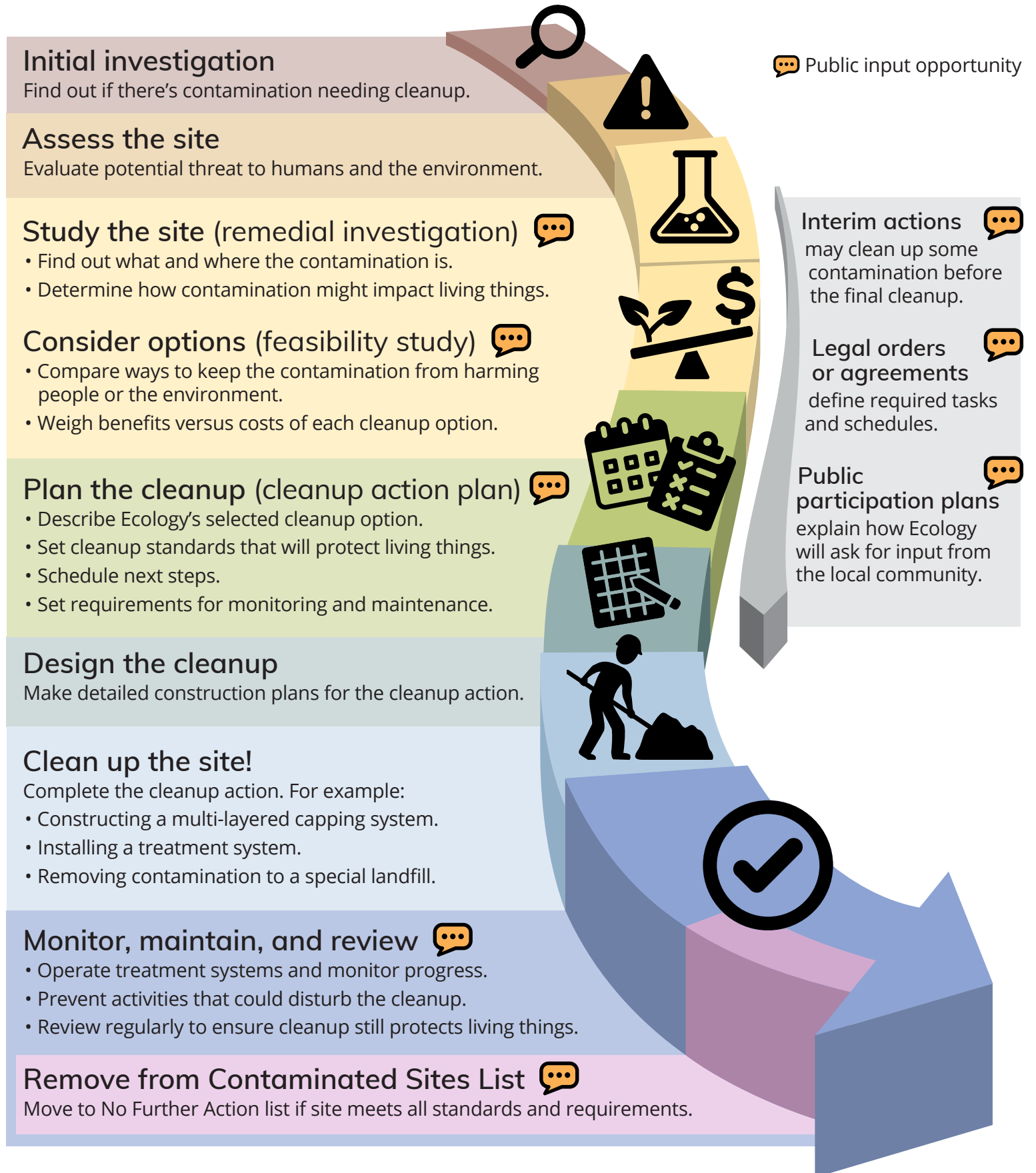
⁵ <https://apps.ecology.wa.gov/publications/SummaryPages/9406.html>

⁶ <https://apps.ecology.wa.gov/publications/SummaryPages/1909166.html>

Washington's Cleanup Process



Public participation plans and comment periods are only required for cleanups under a legal agreement with Ecology. Otherwise, all cleanups follow the same steps. The steps are defined by Washington's cleanup law, the Model Toxics Control Act.



Resource Conservation and Recovery Act

There are federal and state rules about hazardous wastes. Congress passed RCRA in 1976 to ensure safe management and disposal of hazardous waste. RCRA was updated several times to expand the scope and requirements.

RCRA's goals are to:

- Protect human health and the environment.
- Reduce waste and conserve energy and natural resources.
- Reduce or stop hazardous waste generation.

Treatment, storage, and disposal (TSD) facilities must have a permit to design, operate, maintain, or close their site. RCRA also requires facilities to clean up contamination from past and present practices. These cleanup activities are called **corrective actions**.

Federal RCRA and state dangerous waste regulations require opportunities for public participation during the stages of facility permitting and cleanup.

State Environmental Policy Act

The State Environmental Policy Act (SEPA) is followed during review and development of cleanup plans. Ecology uses SEPA during site cleanups to find and evaluate negative environmental impacts that could result from a proposed action. Hexcel's draft SEPA resulted in a determination of non-significance, meaning that this work will not have large, negative environmental impacts.

Site Information

Basic information

Kent is located in King County, Washington, United States. It has a total area of 33.7 square miles and is the sixth largest city in the state. Kent is the second-oldest incorporated city after Seattle. It is in the heart of the Seattle-Tacoma metropolitan area, located 19 miles south of Seattle and 19 miles northeast of Tacoma.

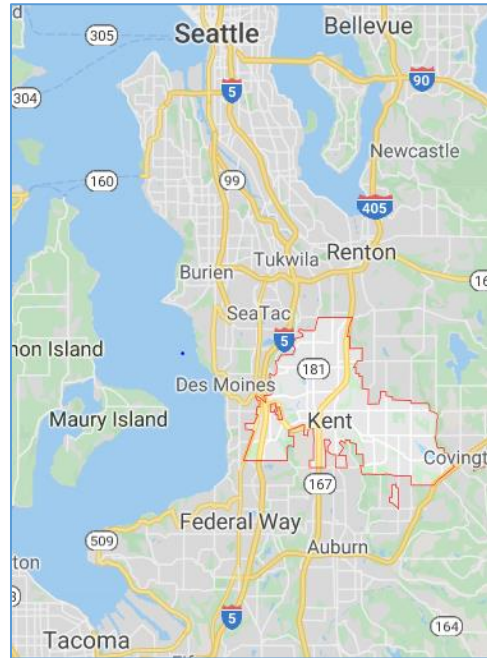


Figure 2. Location of Kent, Washington.

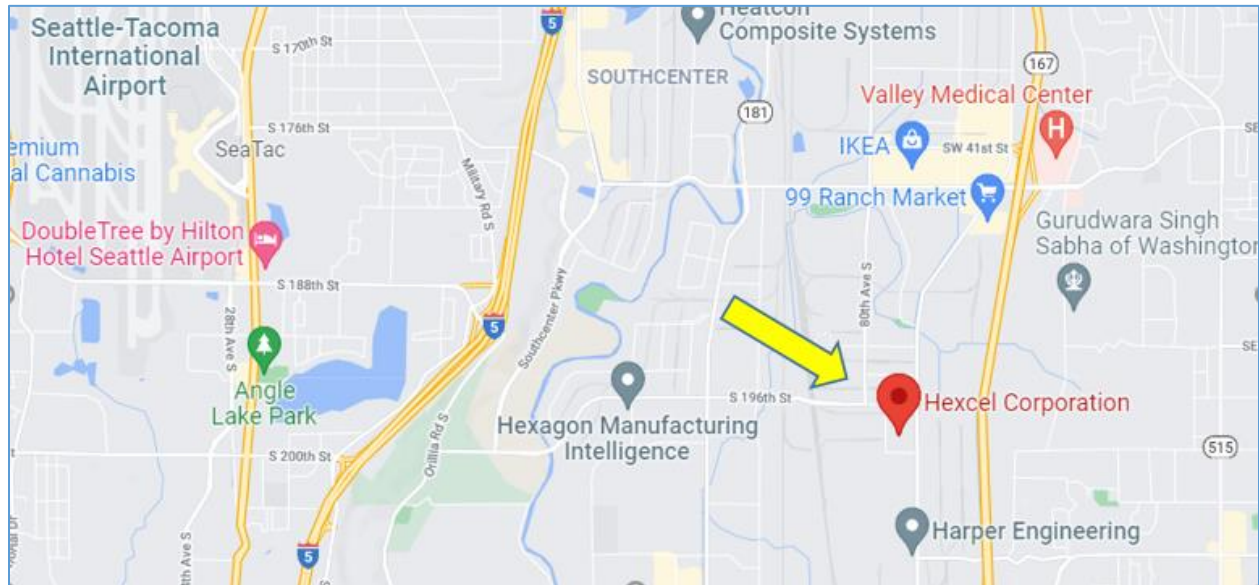


Figure 3: Google Map showing the Hexcel facility in Kent, Washington.

Site history

This cleanup site in Kent has two main properties: Hexcel Corporation’s Kent Plant 1 facility and BSB Diversified (BSB) (see Figure 3). Hexcel is currently an aerospace manufacturing facility, but in the past, a metal finishing and electroplating plant operated on the site.

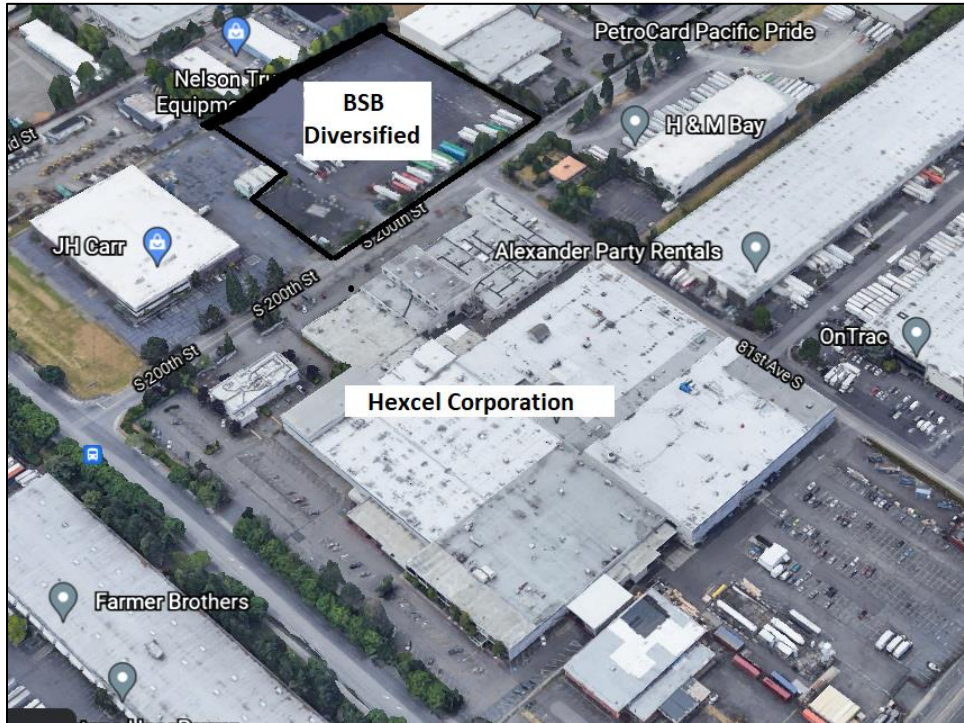


Figure 4: Location of Hexcel Corporation and BSB Diversified in Kent, Washington.

At this site, BSB is the main source of the contamination. Hexcel is a neighboring property. Contamination from BSB polluted the groundwater that flows beneath Hexcel.

This comment period is for cleanup documents related to Hexcel only.

Hexcel’s draft Cleanup Action Plan (dCAP) explains how the contamination in the groundwater under Hexcel will be monitored and cleaned up. The cleanup at BSB, where the contamination came from, is complete. However, there are breakdown products from that contamination left in the groundwater under the Hexcel property.

The remaining groundwater contamination beneath the Hexcel Kent Plant 1 facility will be treated with monitored natural attenuation, a bacterial process that occurs in the groundwater. If the Ecology site manager decides natural attenuation isn’t working fast enough, we will require Hexcel to use enhanced in-situ (in place) bioremediation. Enhanced bioremediation involves injecting food for the bacteria that naturally live in groundwater, so they multiply and break down contamination faster.

We developed the dCAP with Hexcel in accordance with MTCA under [Chapter 70.105D RCW](#)⁷ (Revised Code of Washington) and [Chapter 173-340 WAC](#)⁸ (Washington Administrative Code).

Contamination

Prior to 1988, both the Hexcel and BSB sites were owned by BSB. Historical operations included metal finishing and electroplating. The historical operations used the chlorinated solvent trichloroethylene (TCE) to clean metal parts. Spills and leaks of TCE have contaminated soils and groundwater. Over time, TCE breaks down into cis 1-2 dichloroethylene and vinyl chloride. Vinyl chloride has a very strict cleanup level because it is suspected to cause cancer.

Cleanup process

Most of the Hexcel Corporation contamination came from the BSB property. However, BSB installed an underground wall to stop contaminating the Hexcel property.

The 2024 public comment period is for Hexcel's dCAP, which explains how the remaining vinyl chloride in their groundwater will be addressed. Hexcel's cleanup activities included groundwater extraction and treatment, and an in-situ (in place) bioremediation system.

The remaining groundwater contamination at the Hexcel Kent Plant 1 facility will be treated with monitored natural attenuation. If the Ecology site manager decides natural attenuation isn't working fast enough, we will require Hexcel to add enhanced in situ (in place) bioremediation. Enhanced bioremediation involves injecting food for the bacteria that naturally live in groundwater, so they multiply and break down contamination faster.

You can view or download the following documents related to this comment period at ecology.wa.gov/hexcel:

- **Draft Focused Remedial Investigation (FRI)/Focused Feasibility Study (FFS):** The FRI is a study of the site conditions and contamination. The FFS compares cleanup actions.
- **Draft Cleanup Action Plan (dCAP):** The dCAP describes the proposed cleanup actions and sets the cleanup standards that the cleanup must meet.
- **Draft Consent Decree:** This is the legal agreement Ecology has with Hexcel to complete this cleanup according to state law.

⁷ <https://app.leg.wa.gov/rcw/dispo.aspx?cite=70.105D#:~:text=Chapter%2070.105D%20RCW%20Dispositions,CLEANUP%2DMODEL%20TOXICS%20CONTROL%20ACT&text=These%20documents%20are%20currently%20being,during%20the%202024%20Legislative%20Session>.

⁸ <https://apps.leg.wa.gov/wac/default.aspx?cite=173-340>

- **Draft State Environmental Policy Act (SEPA) and Determination of Non-Significance (DNS):** Ecology uses SEPA during site cleanups to find and evaluate negative environmental impacts that could result from a proposed action. Hexcel’s draft SEPA resulted in a DNS, meaning that this action will not have large, negative environmental impacts.
- **Public Participation Plan (PPP):** The PPP encourages comment and involvement in cleanup decisions from the community.

Ecology uses the focused remedial investigation and focused feasibility study to select cleanup actions for the site. We oversee site cleanup activities—they must meet all federal and state standards. We’re asking the public to comment on the draft cleanup action plan, FRI/FFS, draft consent decree, SEPA, DNS, and public participation plan.

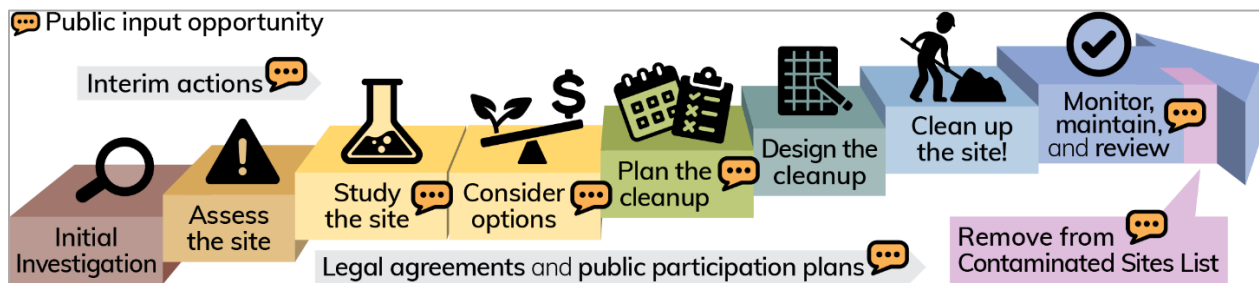


Figure 5: [Formal Cleanup Process \(English\)](#).⁹



Figure 6: [Formal Cleanup Process \(Russian\)](#).¹⁰

⁹ <https://apps.ecology.wa.gov/publications/SummaryPages/1909166.html>

¹⁰ <https://apps.ecology.wa.gov/publications/SummaryPages/1909166RU.html>



Figure 7: [Formal Cleanup Process \(Spanish\)](#).¹¹



Figure 8: [Formal Cleanup Process \(Vietnamese\)](#).¹²

Demographics

Below are the demographic indicators for the area around Hexcel, including the people of color, low income, and linguistically isolated populations.

Table 1: Kent, WA: One-mile ring (radius) around the site (population 1,638).

Demographic Indicators	Value	State Average	Percentile in State
Demographic Index	43%	29%	81
People of Color Population	67%	31%	92
Low-Income Population	17%	27%	34
Linguistically Isolated Population	7%	4%	79
Population with Less Than High School Education	4%	9%	34
Population Under 5 Years of Age	6%	6%	52
Population Over 64 Years of Age	11%	15%	37

¹¹ <https://apps.ecology.wa.gov/publications/SummaryPages/1909166ES.html>

¹² <https://apps.ecology.wa.gov/publications/SummaryPages/1909166VI.html>

People of color and minority population

Ecology ran a demographic analysis using [EPA's Environmental Justice Screen](#)¹³ (EJSCREEN) tool for a one-mile radius around the site. The standard report suggests these indicators for environmental justice considerations:

- Demographic index.
- People of color population.
- Linguistically isolated population.
- Population under 5 years of age.

Census data from the 2014–2018 American Community Survey indicates the largest racial population reporting one race around the site is Asian with 484 residents.

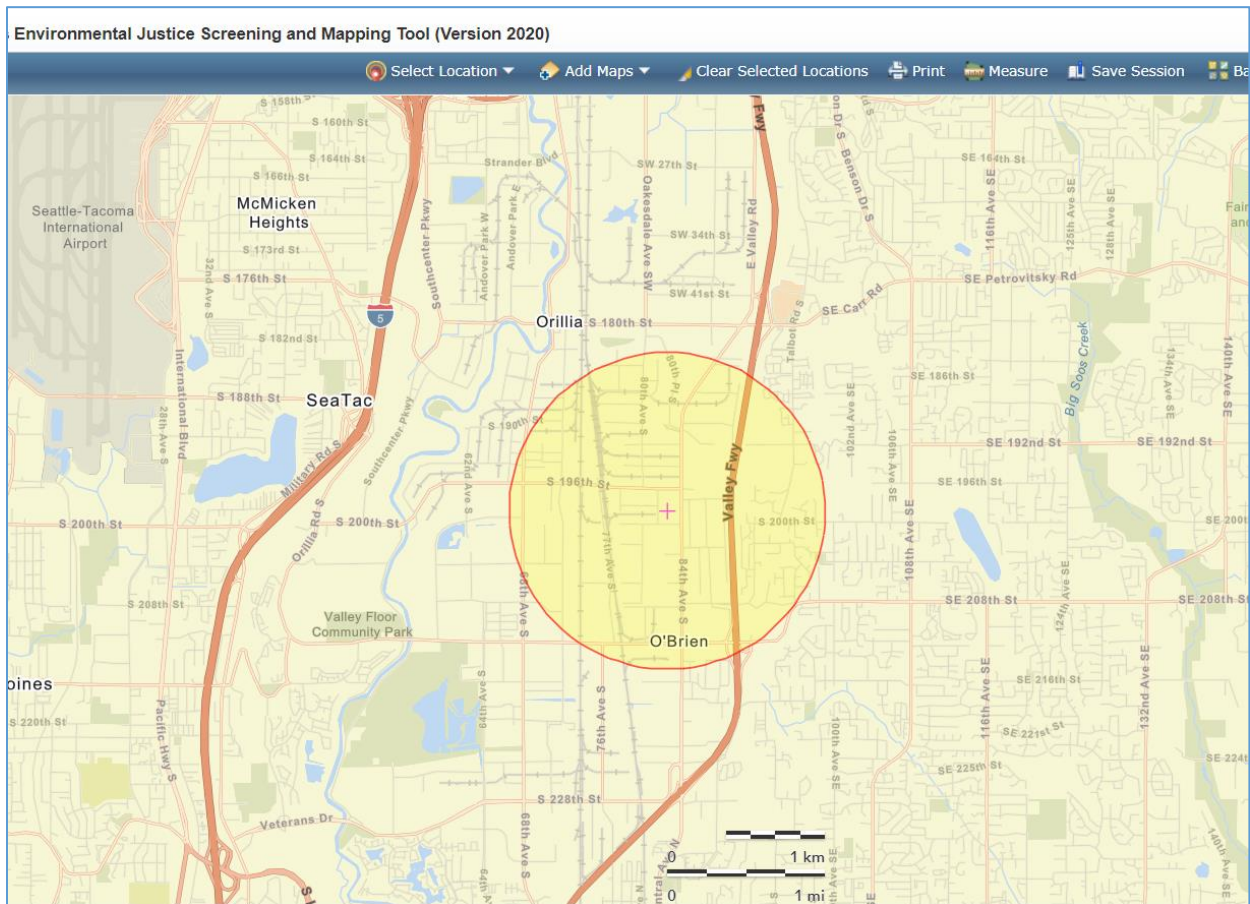


Figure 9: Map showing one-mile radius for environmental justice indicators (taken from EPA's EJSCREEN mapping tool).

¹³ <https://www.epa.gov/ejscreen>

English language proficiency

According to the 2015 U.S. Census language data for this ZIP code (98032), the Spanish or Spanish Creole populations that speak English “less than very well” are 9.87 percent of the area population.

Census data from the 2014–2018 American Community Survey shows that 360 residents within a one-mile radius speak English “less than very well.” There are 34 linguistically isolated households. Other Indo-European languages are spoken in 29 homes; Spanish is spoken in 4.

Outreach activities and language access

Based on this analysis, we will conduct the following outreach activities for this site:

- Contact cultural organizations and leaders in these communities.
- Provide information about requesting language services in all public materials.
- Provide basic information for this site in Spanish, Russian, Vietnamese, and Punjabi in all outreach materials.
- Translate all documents that are vital or critical to well-being for language groups that are either 5% of the population or more than 1,000 people.

To request translation services, please contact:

Christa Colouzis, Corrective Action Supervisor
Washington State Department of Ecology
Northwest Region Office
P.O. Box 330316
Shoreline, WA 98133
Telephone: 425-324-1850
Email: Christa.Colouzis@ecy.wa.gov

Ecology will reach out to cultural community organizations as part of our outreach and provide information in other languages following federal guidance.¹⁴ The non-English languages most widely spoken in this area are Other Indic and African languages and Spanish. When appropriate, we will provide outreach materials in these languages. We strive to make our public participation efforts as inclusive as possible and welcome your input about how to reach the nearby community.

¹⁴ Guidance to Environmental Protection Agency Financial Assistance Recipients Regarding Title VI Prohibition Against National Origin Discrimination Affecting Limited English Proficient Persons, 69 Fed. Reg. § 35602 (June 15, 2004).

Tribal involvement

Ecology will invite the federally recognized Muckleshoot Tribe, Puyallup Tribe, and Nisqually Tribe that reside in King County to engage in decision-making during the process on a government-to-government basis.

Public Participation Activities

Members of the public may ask questions, submit informal comments, or share site information at any time. Interested parties don't need to wait for a formal public comment period to contact Ecology.

However, to be included in the formal site record, comments about the site investigation, cleanup alternatives, or cleanups must be submitted during formal comment periods. In addition, the public is invited to review site documents before they become final. This is the most direct way to learn more about the site and be involved in the cleanup's decision-making.

How we share information with the community

During specific stages of the cleanup, Ecology will mail notices about public comment periods to addresses around the site. The mailing list area varies depending on the type of contamination and its location. At minimum, the mailing list will include addresses within a quarter-mile radius of the site and other interested organizations and individuals.

The notices will provide general information about the site, contact information for submitting comments, and times and locations of scheduled public meetings or hearings. They will also include information about how to request a public meeting if one is not scheduled.

Ecology may also develop documents outside of comment periods to keep the community updated on the site's status. These informational documents will be available online and at document repositories. Print copies may be mailed to the nearby community if we feel the message warrants the extra costs.

Comment period notices and other site announcements may also be posted in the community (for example, in local businesses, schools, and libraries).

Postal mailing list

Ecology maintains a mailing list that includes addresses near the site. This mailing list also includes local, state, and federal government contacts.

Everyone on the list will receive public comment notices when draft documents are available.

We'll add additional individuals, organizations, and other interested parties to the mailing list as requested. If you would like to be added to the mailing list for this site, please contact Christa Colouzis at 425-324-1850 or christa.colouzis@ecy.wa.gov.

Site Register

Public comment periods, events, and other cleanup notices are published in Ecology's [Site Register](#).¹⁵ To receive the Site Register by email, please [subscribe online](#),¹⁶ or contact Sarah Kellington at sarah.kellington@ecy.wa.gov or call 360-280-3167.

Newspaper display ads or legal notices

For this site, we will announce public comment periods and events in ads or notices published in the [Kent Reporter](#).¹⁷ We'll also publish notices on our [Public Input & Events Listing](#).¹⁸

Ecology's website and social media platforms

Ecology maintains a webpage for the [Hexcel Corporation](#)¹⁹ that provides site information and cleanup documents. Information may also be shared about cleanup sites through [news releases](#)²⁰ and [Ecology's blog](#).²¹

Document review locations

You may view documents in person at the following locations:

Kent Public Library

212 2nd Avenue North
Kent, WA 98032
Telephone: 253-859-3330

By appointment only:

Washington State Department of Ecology

Northwest Region Office
15700 Dayton Ave N.
Shoreline, WA 98133
Reception (24-hour): 206-594-0000

To schedule an appointment, please contact:
Michael Hart, Public Disclosure Coordinator
michael.hart@ecy.wa.gov

You can also review documents on our website: ecology.wa.gov/hexcel.

Signs around the cleanup site

We may also put up signs with information about project status, traffic impacts, and health risks around the cleanup site.

¹⁵ ecology.wa.gov/Regulations-Permits/Guidance-technical-assistance/Site-Register-lists-and-data

¹⁶ https://public.govdelivery.com/accounts/WAECY/subscriber/new?topic_id=WAECY_118

¹⁷ <https://www.kentreporter.com/news/>

¹⁸ ecology.wa.gov/Events/Search/Listing

¹⁹ ecology.wa.gov/hexcel

²⁰ <https://ecology.wa.gov/About-us/Get-to-know-us/News>

²¹ <https://ecology.wa.gov/blog>

How to share information with us

At minimum, MTCA requires 30-day public comment periods for draft cleanup documents and 14-day comment periods for SEPA documents. SEPA documents are often made available for public review with other cleanup documents. In that case, we combine the comment periods and they last at least 30 days. We may hold comment periods longer than 30 days.

We may also identify public concerns and cleanup goals by meeting with and soliciting information from interested community members and organizations. To collaborate with us about this site, please contact Christa Colouzis at 425-324-1850 or Christa.Colouzis@ecy.wa.gov.

Public comment periods

Formal 30-day comment periods allow members of the public to comment on draft documents, legal agreements, and proposed cleanup actions. If there is enough interest, Ecology may extend the public comment period. When Ecology oversees SEPA determinations, we hold comment periods for at least two weeks and comment periods may last 30 days or more when other cleanup documents are available for review at the same time.

Following a comment period, we publish all the input we received and respond to comments and questions. If the comments result in significant changes to the cleanup documents, then the documents will be revised and re-issued for public review. If the comments don't result in significant changes, they become final.

Public events

We hold public meetings, workshops, open houses, and public hearings based on community interest. If we haven't scheduled a meeting, we will hold one if 10 people request it—we may extend the public comment period so the meeting occurs during it.

Events are held at locations close to the site that meet Americans with Disabilities Act standards. Public meetings, workshops, open houses, and hearings are always announced in advance using a variety of methods.

Americans with Disabilities Act

To request an ADA accommodation for disabilities, or printed materials in a format for the visually impaired, contact Ecology at 360-407-6700 or hwtrpubs@ecy.wa.gov, or visit ecology.wa.gov/accessibility. People with impaired hearing may call Washington Relay Service at 711. People with speech disability may call TTY at 877-833-6341.

Plan Amendments

Ecology developed this plan following MTCA regulations ([WAC 173-340-600](https://apps.leg.wa.gov/wac/default.aspx?cite=173-340-600)²²). We review it as the cleanup progresses and amend it as necessary. You may suggest amendments to Val Cramer, Site Manager, by phone at 425-698-5539 or email valerie.cramer@ecy.wa.gov.

This plan includes information for the public regarding opportunities for public involvement and comment. The outreach activities discussed in this section reflect Ecology's current plans for keeping the public informed and providing ways for people to communicate their concerns and questions to us.

If you feel the planned outreach activities described in this plan are insufficient or need changes, we will work to find solutions. New outreach activities or outreach tools that result can be used right away, with or without updating this plan.

²² <https://apps.leg.wa.gov/wac/default.aspx?cite=173-340-600>

List of Abbreviations and Acronyms

Table 2: List of abbreviations and acronyms.

Abbreviation or Acronym	Definition
ADA	Americans with Disabilities Act
BSB	BSB Diversified
Cleanup	Corrective action, or the process of cleaning up a contaminated site.
dCAP	Draft Cleanup Action Plan
DNS	Determination of Non-Significance
Ecology (we)	Washington State Department of Ecology
EJSCREEN	EPA's Environmental Justice Screen
EPA	U.S. Environmental Protection Agency
Facility	Hexcel Corporation in Kent, Washington
FFS	Focused feasibility study
FRI	Focused remedial investigation
Hexcel	Hexcel Corporation
MTCA	Model Toxics Control Act
Plan	Public participation plan
PLP	Potentially liable party
PPP	Public Participation Plan
RCRA	Resource Conservation and Recovery Act
RCW	Revised Code of Washington
SEPA	State Environmental Policy Act
Site	Area where hazardous substances at the facility are currently located.
TCE	Trichloroethylene
TSD	Treatment, storage, and disposal facility
VC	Vinyl chloride
WAC	Washington Administrative Code