



Public Participation Plan

C L Auto Repair Cleanup Site Seattle, WA

Toxics Cleanup Program

Washington State Department of Ecology

Northwest Region Office

Seattle, Washington

October 2024

Publication Information

This document is available on the Department of Ecology's [C L Auto Repair cleanup site page](#).¹

Cover photo credit

- Google Maps, February 2023

Related Information

- Cleanup site ID: 10376
- Facility site ID: 74542995

Contact Information

Toxics Cleanup Program

Augie Nuszer, Public Involvement Coordinator
425-533-5537, Augie.Nuszer@ecy.wa.gov

Shreejita Basu, Site Manager
206-684-4711, Shreejita.Basu@ecy.wa.gov

Northwest Regional Office

15700 Dayton Ave N.
PO Box 330316
Phone: 206-594-0000

Website: [Washington State Department of Ecology](#)²

ADA Accessibility

The Department of Ecology is committed to providing people with disabilities access to information and services by meeting or exceeding the requirements of the Americans with Disabilities Act (ADA), Section 504 and 508 of the Rehabilitation Act, and Washington State Policy #188.

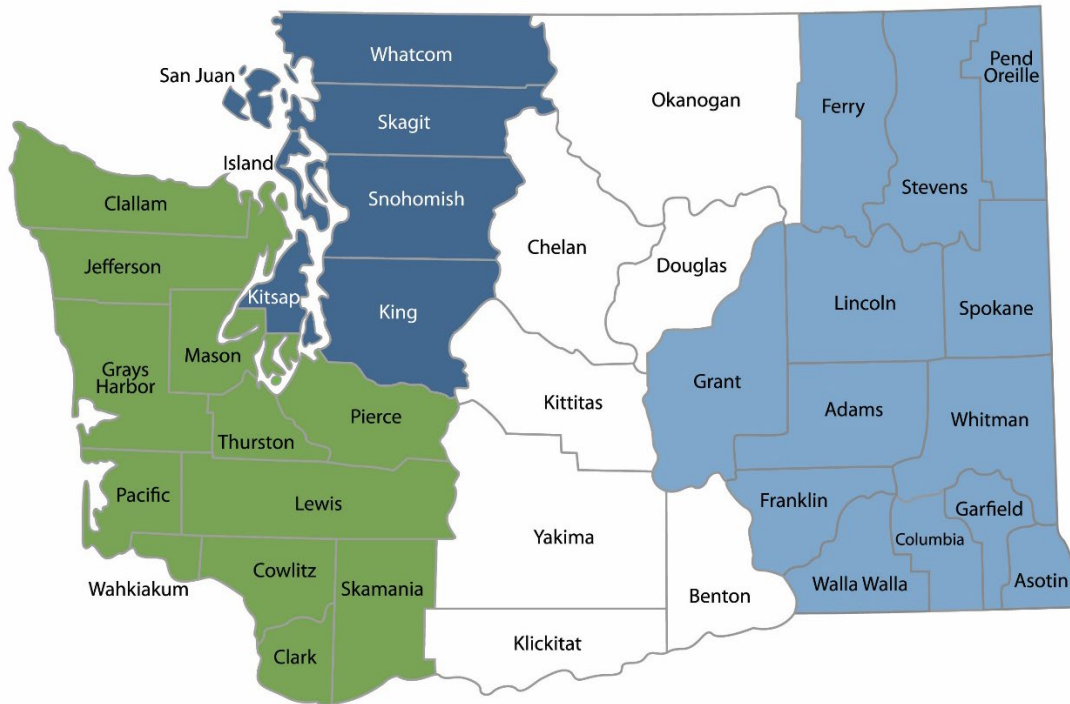
To request an ADA accommodation, contact Ecology by phone at 360-407-6831 or email at ecyadacoordinator@ecy.wa.gov. For Washington Relay Service or TTY call 711 or 877-833-6341. Visit Ecology's website for more information.

¹ <https://apps.ecology.wa.gov/cleanupsearch/site/10376>

² <https://ecology.wa.gov/contact>

Department of Ecology's Regional Offices

Map of Counties Served



Southwest Region 360-407-6300	Northwest Region 206-594-0000	Central Region 509-575-2490	Eastern Region 509-329-3400
---	---	---------------------------------------	---------------------------------------

Region	Counties served	Mailing Address	Phone
Southwest	Clallam, Clark, Cowlitz, Grays Harbor, Jefferson, Mason, Lewis, Pacific, Pierce, Skamania, Thurston, Wahkiakum	PO Box 47775 Olympia, WA 98504	360-407-6300
Northwest	Island, King, Kitsap, San Juan, Skagit, Snohomish, Whatcom	PO Box 330316 Shoreline, WA 98133	206-594-0000
Central	Benton, Chelan, Douglas, Kittitas, Klickitat, Okanogan, Yakima	1250 W Alder St Union Gap, WA 98903	509-575-2490
Eastern	Adams, Asotin, Columbia, Ferry, Franklin, Garfield, Grant, Lincoln, Pend Oreille, Spokane, Stevens, Walla Walla, Whitman	4601 N Monroe Spokane, WA 99205	509-329-3400
Headquarters	Across Washington	PO Box 46700 Olympia, WA 98504	360-407-6000

Public Participation Plan

**C L Auto Repair Cleanup Site
Seattle, WA**

Toxics Cleanup Program
Washington State Department of Ecology
Northwest Regional Office
Shoreline, WA

October 2024



DEPARTMENT OF
ECOLOGY
State of Washington

Table of Contents

List of Figures	5
Figures.....	5
Public Involvement in Contamination Cleanup	6
Site contacts.....	6
Washington’s Cleanup Laws	7
Model Toxics Control Act.....	7
State Environmental Policy Act.....	7
Site Information	9
Site background	9
Contamination and site cleanup progress	9
Why this site matters.....	10
Cleanup plans.....	11
Area community	11
Environmental Justice.....	12
Public Participation Activities	14
How we share information with the community.....	15
How to share information with us	16
Public Participation Grants	17
Americans with Disabilities Act.....	17
Plan Amendments	18
Appendix	19
Appendix A. EPA EJScreen Community Report	19

List of Figures

Figures

Figure 1: Steps in Washington's Cleanup Process 8

Figure 2: Overhead map of the cleanup site 9

Figure 3: C L Auto Repair cleanup site 10

Figure 4: Map of C L Auto Repair site 11

Figure 5: Washington Environmental Health Disparities Map for the C L Auto Repair Cleanup site..... 13

Figure 6: EPA EJScreen generated maps of the outreach impact area for this project 14

Public Involvement in Contamination Cleanup

The Washington State Department of Ecology (Ecology) developed this public participation plan (plan) in cooperation with Estelita's Library, the party responsible for cleanup costs. The purpose of the plan is to promote meaningful community involvement during cleanup.

The plan describes ways Ecology will inform the public about contamination investigations and cleanup options throughout the cleanup process. Ecology encourages the public to learn about and get involved in decision-making opportunities. This plan identifies how and when the public can get involved during different stages of the investigation and cleanup of contamination.

Site contacts

To be included in the site record, comments about the cleanup process must be submitted during comment periods. Questions and informal comments or information about the site's history are welcome anytime.

Ecology

Northwest Regional Office
15700 Dayton Ave N.
Shoreline, WA 98113

Shreejita Basu, Site Manager
Shreejita.Basu@ecy.wa.gov
206-684-4711

Augie Nuszer, Public Involvement
Coordinator
Augie.Nuszer@ecy.wa.gov
425-533-5537

Estelita's Library

Estelita's Library
241 MLK Jr Way South
Seattle, WA 98144

Edwin Lindo, Founder
edwin@estelitas.org
415-342-9009

Washington's Cleanup Laws

Ecology uses the Model Toxics Control Act (MTCA) and accompanying regulations for cleanup activities. This plan is required under MTCA, a law that passed in 1989. MTCA provides guidelines for contaminated site cleanup in Washington State and sets standards to ensure the cleanup protects human health and the environment.

Model Toxics Control Act

MTCA began as a grassroots citizen's initiative in 1988, and started the process of systematically cleaning up contaminated sites in Washington. Under MTCA, a current or past property owner or operator may be held responsible for cleaning up contamination on, or coming from, their property to standards that are safe for human health and the environment.

Ecology enacts MTCA and oversees cleanups in the state and issues regulations and guidance governing those cleanups. The regulations are found in [Chapter 173-340 Washington Administrative Code \(WAC\)](#).³ Ecology investigates reports of property contamination, and if the contamination is seen as a significant threat to human health or the environment, the contaminated property is placed on the Hazardous Sites List, and the cleanup process begins.

Public participation is an important part of cleanup under the MTCA process. Participation needs are assessed at each cleanup site according to the level of public interest and the degree of risk posed by the contamination. Individuals who live near the site, community groups, businesses, government, other organizations, and interested parties have the opportunity to get involved by commenting on the cleanup process.

Under MTCA, the cleanup process generally includes five phases. Each phase includes an opportunity for the public to review and comment on cleanup documents.

State Environmental Policy Act

The MTCA cleanups also require evaluation under the State Environmental Policy Act ([SEPA; Chapter 197-11 WAC](#)⁴). Under SEPA, the potential for significant adverse environmental impacts from a project or action must be evaluated by state and local agencies when making decisions. This evaluation is subject to public review and comment in tandem with cleanup documents.

³ <https://apps.ecology.wa.gov/publications/publications/9406.pdf>

⁴ <https://apps.leg.wa.gov/wac/default.aspx?cite=197-11>

Washington's Cleanup Process

Public participation plans and comment periods are only required for cleanups under a legal agreement with Ecology. Otherwise, all cleanups follow the same steps. The steps are defined by Washington's cleanup law, the Model Toxics Control Act.



January 2024 | publication 19-09-166

Figure 1: Steps in Washington's Cleanup Process⁵

⁵ <https://apps.ecology.wa.gov/publications/SummaryPages/1909166.html>

Site Information

Site background

[Estelita's Library](https://estelitaslibrary.org/)⁶ is a non-profit community social-justice library and bookstore serving the south end of Seattle. Estelita's Library is entering into a legal agreement called a Prospective Purchaser Consent Decree (PPCD) to purchase this property in Seattle's Beacon Hill neighborhood. This site would be re-developed as a cultural hub called the 'Solidarity House'. It was formerly a Gilmore branded gas station from 1939 to 1956, and then a Mobil gas station from 1956 to 1990. An auto body service and repair shop occupied the property from 1990 to 2022. Those businesses are now closed, and the property is vacant.

The project aims to do the following:

- Convert an underutilized commercial property with legacy contamination into an affordable housing complex and community hub
- Uplift community health and resilience
- Support the de-gentrification of Beacon Hill



Figure 2: Overhead map of the cleanup site

Contamination and site cleanup progress

Petroleum-contaminated soil and groundwater have been discovered by prior investigations. The contaminated soil extends to at least 36 feet below ground surface and horizontally to unknown extent beyond the property boundaries to the north, east, and west. The contaminated groundwater beneath the site is approximately 15 to 20 feet below ground level and extends beyond the property boundaries. Results show a substantial amount of free product and dissolved-phase contamination found in multiple off-property locations.

Investigations found the following contaminants in soil and groundwater:

- Gasoline, diesel, and oil range petroleum hydrocarbons

⁶ <https://estelitaslibrary.org/>

- Benzene, toluene, ethylbenzene, and xylenes (BTEX)
- Naphthalene
- Lead
- Volatile Organic Compounds (VOCs)

These contaminants were found at levels above the levels that are protective of the health of people, plants, and animals using the criteria established in the state’s cleanup law, the Model Toxics Control Act ([MTCA](https://ecology.wa.gov/mtca)⁷). MTCA requires these contaminants to be cleaned up. The site was reported to Ecology in 2001 and received a No Further Action (NFA) letter from Ecology in 2011. Additional contamination was discovered and that NFA determination was rescinded. Several environmental assessments have been completed to further understand the extent of previous contaminant releases at the site. The full extent of contamination and additional data gaps that require additional investigation will be determined in a remedial investigation study.

Why this site matters

This site cleanup is made possible in part by funding from an [Affordable Housing Planning Grant](#)⁸, awarded in June 2023. Washington is in dire need of affordable housing across the state. Contamination, or even the suspicion of contamination, drives up the costs of housing development. The high cost leaves little incentive for developers to build affordable housing.

In addition to the usual risks of redevelopment, cleaning up contaminated sites can be a complex process with considerable risk. The cost and time associated with cleaning up a site is often poorly understood; as a result, many sites are left vacant or underused for years, even decades. Supporting cleanups for affordable housing helps ensure the cleanup gets done, while protecting the community’s health and the environment. Ecology developed the [Affordable Housing Cleanup Grant Program](#) (AHCGP) to help advance environmental cleanups for affordable housing developments. These grants can cover remedial action costs, including the planning, investigative, and technical work needed to clean up contaminated sites. The purpose



Figure 3: C L Auto Repair cleanup site

⁷ <https://ecology.wa.gov/mtca>

⁸ <https://ecology.wa.gov/About-us/Payments-contracts-grants/Grants-loans/Find-a-grant-or-loan/Affordable-housing-planning>

of the AHCGP is to expedite the cleanup and redevelopment of contaminated sites into affordable housing use and lessen the impact of cleanup costs.

Cleanup plans

In 2024, Ecology is finalizing a legal agreement called a Prospective Purchaser Consent Decree (PPCD) with Estelita’s Library, the party who will conduct the cleanup, in addition to this Public Participation Plan. This legal agreement requires Estelita’s Library to:

- Investigate and characterize the site in a Remedial Investigation
- Perform a Feasibility Study to evaluate cleanup options
- Provide a detailed description of the selected cleanup action in a Cleanup Action Plan (CAP)
- Implement the selected cleanup action during site redevelopment

Each of these steps and all legal agreements will be issued for public review and comment. We welcome informal comments, questions, or information about the site’s history anytime. To be included in the formal site record, comments about these documents or the cleanup process must be submitted online or in writing during the formal comment periods.

Area community

Neighborhood

The site lies within the North Beacon Hill neighborhood in the City of Seattle (see Figure 4). The Beacon Hill Branch of the Seattle Public Library is on the next street, and the site is next to Stevens Place, a small park. There are many restaurants and businesses close to the site. The surrounding neighborhoods are a mixture of residential and commercial zoning.

The site is within Washington’s 9th Congressional District, 37th Legislative District, King County Council’s 2nd District, and Seattle’s City Council District 2.

This neighborhood’s median household income is above the citywide average and the percentage of the population living below the poverty line is below the city average.

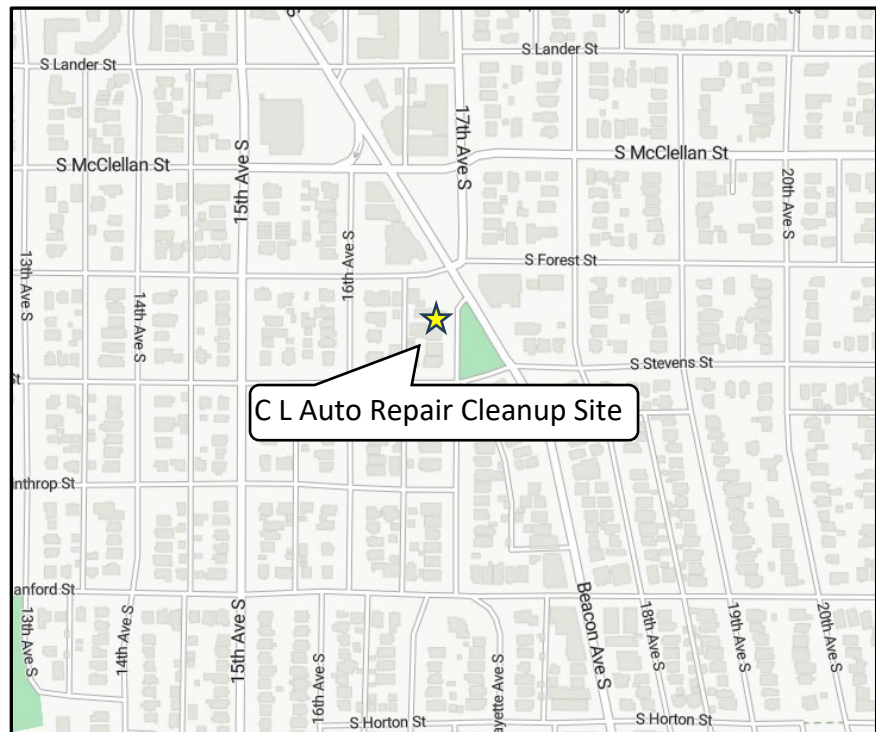


Figure 4: Map of C L Auto Repair site

Tribal Engagement

Ecology invites the federally recognized Muckleshoot Tribe, Snoqualmie Tribe, Tulalip Tribe, Stillaguamish Tribe, and Suquamish Tribe to engage with the cleanup process for this site, and Ecology will ensure these Tribes have ample opportunity to be involved throughout the process on a government-to-government basis. We will also engage with the Duwamish Tribe.

Environmental Justice

Washington Environmental Health Disparity Map

The [Washington Environmental Health Disparity Map](#)⁹ evaluates environmental health risk factors in communities.

Ecology does not interpret rankings as absolute values, and we do not use them to diagnose a community health issue or to label a community. Environmental health disparity is ranked on a scale of 1-10 (low to high) and is relative to other locations in the state. The census tract for the Site ranks 8 for environmental health risk. (See Figure 3).

The Washington State Department of Health mapping tool model was “specifically adapted from CalEnviroScreen – a cumulative environmental impacts assessment mapping tool developed by CalEPA and used in California. – It estimates a cumulative environmental health impact score for each census tract reflecting pollutant exposures and factors that affect people’s vulnerability to environmental pollution.

The model is based on a conceptual formula of Risk = Threat * Vulnerability, where threat and vulnerability are based on several indicators.

The threat is represented by indicators that account for pollution burden, which is a combination of environmental effects and environmental exposures in communities. Environmental effects include indicators that account for adverse environmental quality generally, even when population contact with an environmental hazard is unknown or uncertain. Environmental exposures include the levels of certain pollutants that populations encounter.

Vulnerability is represented by indicators of socioeconomic factors and sensitive populations for which there is clear evidence that they may affect susceptibility or vulnerability to an increased pollution burden. Indicators in socioeconomic factors measure population characteristics that modify the pollution burden itself. Sensitive populations refer to those who are at greater risk due to intrinsic biological vulnerability to environmental stressors. In the model, threat is multiplied by vulnerability in order to reflect the scientific literature that indicates population characteristics often modify and amplify the impact of pollution exposures

⁹ <https://fortress.wa.gov/doh/wtnibl/WTNIBL/>

on certain vulnerable populations. The rankings help to compare health and social factors that may contribute to disparities in a community.”

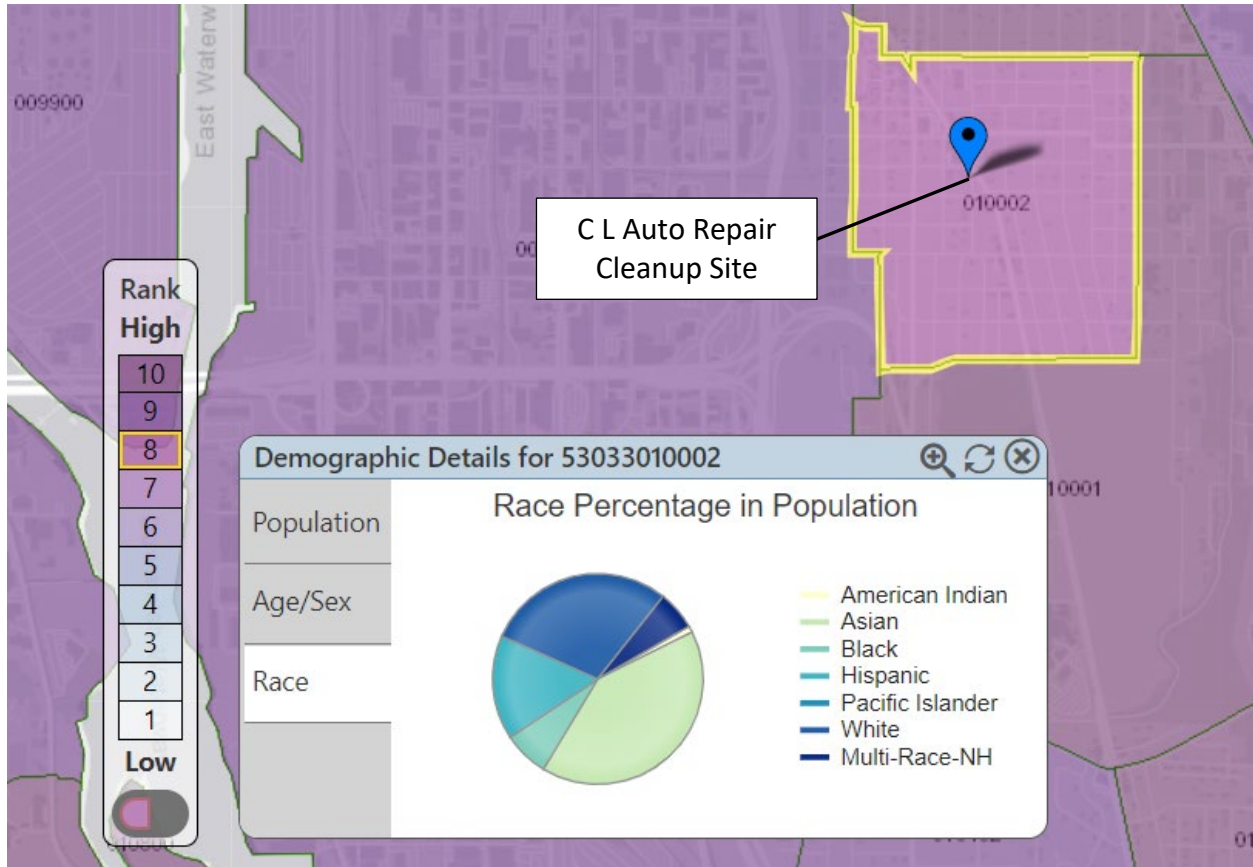


Figure 5: Washington Environmental Health Disparities Map for the C L Auto Repair Cleanup site

Environmental Justice

The data below (see Figure 6) was generated for a 0.25-mile area around the site using the Environmental Protection Agency's [Environmental Justice Screening and Mapping Tool](#) (EJScreen).¹⁰ The data reveals a diverse, economically challenged, and linguistically isolated population. Reaching underserved populations within the project area is a priority.

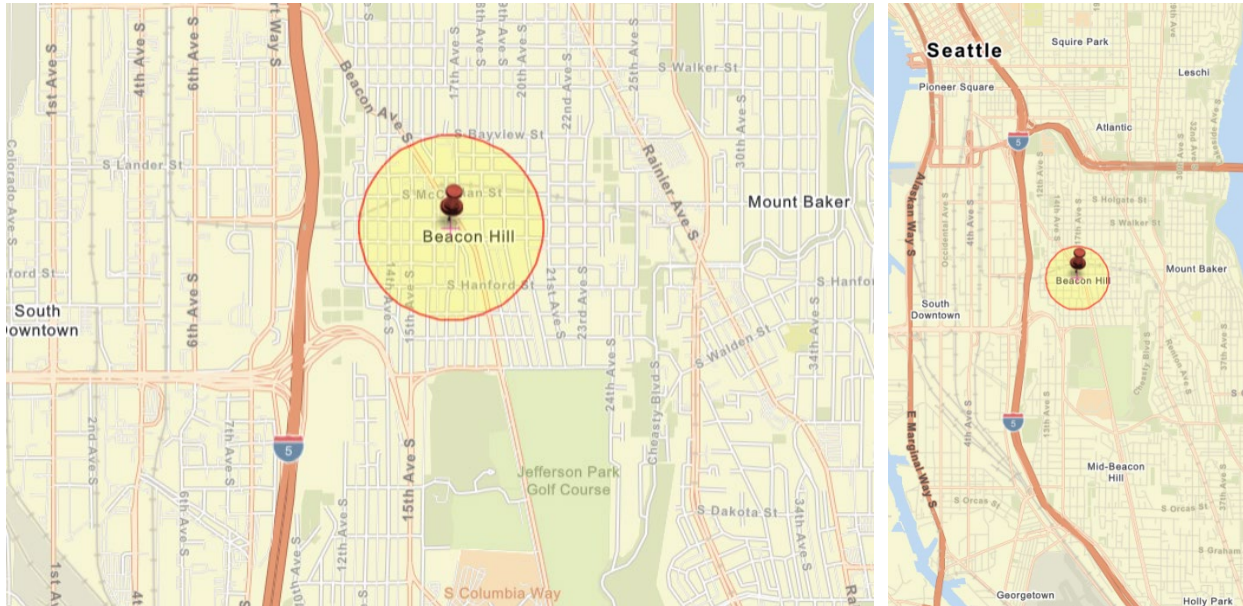


Figure 6: EPA EJScreen generated maps of the outreach impact area for this project

Ecology will reach out to cultural and community organizations as part of our outreach and provide information in other languages as appropriate following federal guidance.¹¹ The non-English language(s) most widely spoken in the area are Spanish (11%) and Chinese (9%). When appropriate, Ecology will provide outreach in these languages. We strive to make our public participation efforts as inclusive as possible and welcome your input about how to best reach the nearby community.

Public Participation Activities

Members of the public may ask questions, submit informal comments, or share site information at any time. Interested parties do not need to wait for a formal public comment period to contact Ecology.

However, to be included in the formal site record, comments about the site investigation, cleanup alternatives, or cleanups must be submitted during formal comment periods. In addition, the public is invited to review site documents before they become final. This is the

¹⁰ <https://ejscreen.epa.gov/mapper/index.html>

¹¹ Guidance to Environmental Protection Agency Financial Assistance Recipients Regarding Title VI Prohibition Against National Origin Discrimination Affecting Limited English Proficient Persons, 69 Fed. Reg. § 35602 (June 15, 2004).

most direct and influential way to learn more about the site and be involved in the cleanup's decision-making.

How we share information with the community

During specific stages of the cleanup, Ecology will mail notices about public comment periods to addresses surrounding the site. The mailing list area will vary depending on the type of contamination and where it's located, but the list will at least include addresses within a 0.25-mile radius of the site and other interested organizations and individuals. These notices will provide general information about the site, contact information for submitting comments, and times and locations of public meetings or hearings or how to request one if not yet scheduled.

Ecology may also develop documents outside of comment periods to keep the community updated on the site's status. These informational documents will be available online and at document repositories. Print copies may be mailed to the nearby community if we feel the message warrants the associated cost and resources.

Comment period notices and other site announcements may also be posted in various locations throughout the community (for example, local businesses, schools, libraries).

Postal mailing list

Ecology maintains a mailing list that includes addresses within a 0.25-mile radius of the site and relevant local, state, and federal government contacts.

These people receive public comment notices when draft documents are available.

We will add additional individuals, organizations, and other interested parties to the mailing list as requested. If you would like to be added to the mailing list for this site, please contact Augie Nuszer at 425-533-5537 or Augie.Nuszer@ecy.wa.gov.

Site Register

Public comment periods, events, and other cleanup notices are published in Ecology's [Site Register](#).¹² To receive the *Site Register* by email, please [subscribe online](#),¹³ or contact Sarah Kellington at sarah.kellington@ecy.wa.gov or 360-280-3167.

Newspaper display ads or legal notices

We announce public comment periods and events in ads or notices published in *The Seattle Times*. For this site we may publish in these additional publications: *The Seattle Medium*, *The*

¹² <https://ecology.wa.gov/Regulations-Permits/Guidance-technical-assistance/Site-Register-lists-and-data>

¹³ https://public.govdelivery.com/accounts/WAECY/subscriber/new?topic_id=WAECY_118

South Seattle Emerald, and *The Facts*. We will also publish notice on our [Public Input & Events Listing](#).¹⁴

Ecology’s website and social media platforms

We maintain a website for the [C L Auto Repair](#)¹⁵ site. The website provides site information, and you may download cleanup documents.

We may also share information about cleanup sites through [news releases, our ECOconnect blog, and social media](#).¹⁶

Places to see print documents

During public comment periods, you can find print documents at the following locations:

Beacon Hill Branch – Seattle Public Library
2821 Beacon Ave South
Seattle, WA 98144
206-684-4711

Washington Department of Ecology
Northwest Regional Office
15700 Dayton Ave N.
Shoreline, WA 98133

To schedule an appointment, please contact the Northwest Region Office Central Records staff at 206-594-0016 or nwro_public_request@ecy.wa.gov.

Signs around the cleanup site

We may also install signs displaying information about project status, traffic impacts, and health risks around the cleanup site.

How to share information with us

At minimum, MTCA requires 30-day public comment periods for draft cleanup documents and 14-day comment periods SEPA documents. SEPA documents are often made available for public review with other cleanup documents. In that case, we combine the comment periods, and they last at least 30 days. We may hold comment periods longer than 30 days.

We may also identify public concerns and cleanup goals by meeting with and soliciting information from interested community members and organizations. To collaborate with us

¹⁴ <https://ecology.wa.gov/Events/Search/Listing>

¹⁵ <https://apps.ecology.wa.gov/cleanupsearch/site/10376>

¹⁶ <https://ecology.wa.gov/About-us/Get-to-know-us/News>

about this site, please contact Augie Nuszer, Public Outreach Specialist at 425-533-5537 or email Augie.Nuszer@ecy.wa.gov.

Public comment periods

Formal 30-day comment periods allow interested members of the public to comment on draft documents, legal agreements, and proposed cleanup actions. If there is significant interest, Ecology may extend the public comment period. When Ecology oversees SEPA determinations, we hold comment periods for at least two weeks and may extend to 30 days or more when other cleanup documents are concurrently available for review.

Following a comment period, we publish all the input we received and respond to significant comments and questions. If the comments result in significant changes to the cleanup documents, then the documents will be revised and re-issued for public review. If the comments do not result in significant changes, then they become final.

Public events

We hold public meetings, workshops, open houses, and public hearings based on community interest. If we have not scheduled a meeting, we will hold one if 10 people request it, and this may cause us to extend a public comment period so the meeting occurs during it.

Events are held at locations close to the site that meet Americans with Disabilities Act standards. Public meetings, workshops, open houses, and hearings are always announced in advance using a variety of methods.

Public Participation Grants

Grants may be available to neighborhood committees, non-profits, and other groups interested in the site. For contaminated sites, these funds can be used to:

- Hire an expert to help interpret technical information¹⁷
- Conduct activities that enhance the public's understanding of the cleanup process

For information about public participation grants, contact Jill Krumlauf at (360) 790-5771 and jill.krumlauf@ecy.wa.gov or Laura Busby at (360) 280-5088 and laura.busby@ecy.wa.gov. You may also visit the [Public Participation Grant website](#).¹⁸

Americans with Disabilities Act

To request ADA accommodation for disabilities, or printed materials in a format for the visually impaired, contact the Ecology ADA Coordinator at 360-407-6831 or ecyadacoordinator@ecy.wa.gov, or visit our [ADA website](#).¹⁹ People with impaired hearing may

¹⁷ Ecology currently does not have a citizen technical advisor for providing technical assistance to citizens on issues related to the investigation and cleanup of the site.

¹⁸ ecology.wa.gov/About-us/How-we-operate/Grants-loans/Find-a-grant-or-loan/Public-participation-grants

¹⁹ <https://ecology.wa.gov/About-us/Accessibility-equity/Accessibility>

call Washington Relay Service at 711. People with speech disability may call TTY at 877-833-6341.

Plan Amendments

Ecology developed this plan following MTCA regulations (WAC 173-340-600). We review it as the cleanup progresses and amend it as necessary. You may suggest amendments to Augie Nuszer at 425-533-5537 or Augie.Nuszer@ecy.wa.gov.

This plan includes information for the public regarding opportunities for public involvement and comment. The outreach activities discussed in this section reflect Ecology's current plans for keeping the public informed and providing ways for those interested in the site to communicate their concerns and questions to us.

If you feel the planned outreach activities and mechanisms described in this plan are insufficient, or should otherwise be modified, we will work to find solutions. New outreach activities or outreach tools established as a result can be implemented right away, with or without amending this plan.

Appendix

Appendix A. EPA EJScreen Community Report

EPA's EJScreen report for a quarter-mile radius of the C L Auto Repair site.

EJScreen Community Report

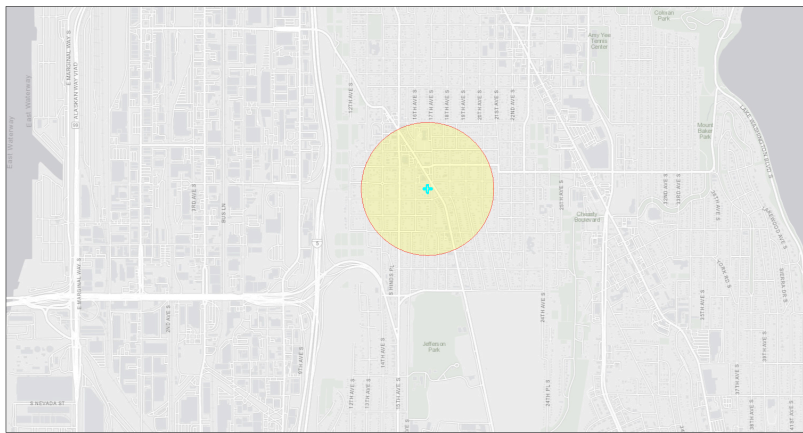
This report provides environmental and socioeconomic information for user-defined areas, and combines that data into environmental justice and supplemental indexes.

C L Auto Repair

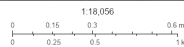
0.25 miles Ring Centered at 47.577423,-122.311091

Population: 2,495

Area in square miles: 0.20

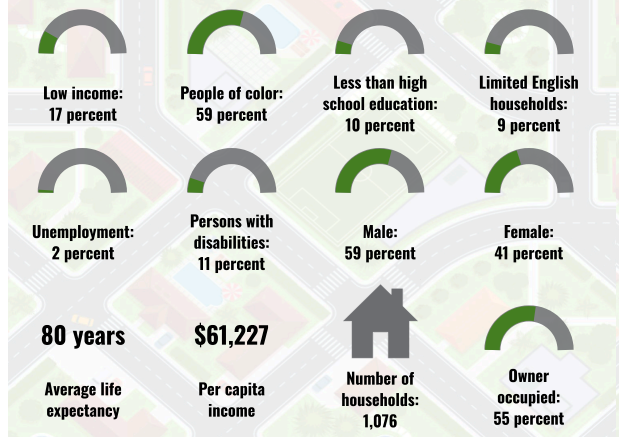


August 21, 2024
C L Auto Repair

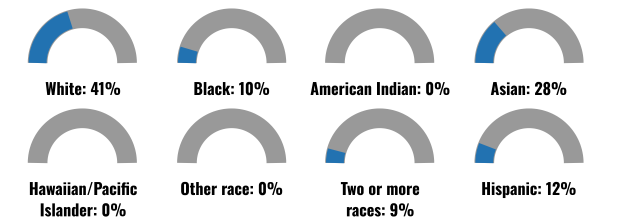


City of Seattle, Bureau of Land Management, Esri, HERE, Garmin, GeoTechnology, Inc., USGS, EPA, City of Seattle, County of King, Esri, HERE

COMMUNITY INFORMATION



BREAKDOWN BY RACE



BREAKDOWN BY AGE



LIMITED ENGLISH SPEAKING BREAKDOWN



LANGUAGES SPOKEN AT HOME

LANGUAGE	PERCENT
English	73%
Spanish	7%
French, Haitian, or Cajun	1%
Korean	2%
Chinese (including Mandarin, Cantonese)	9%
Vietnamese	1%
Tagalog (including Filipino)	1%
Other Asian and Pacific Island	5%
Total Non-English	27%

Notes: Numbers may not sum to totals due to rounding. Hispanic population can be of any race. Source: U.S. Census Bureau American Community Survey (ACS) 2018-2022. Life expectancy data comes from the Centers for Disease Control.

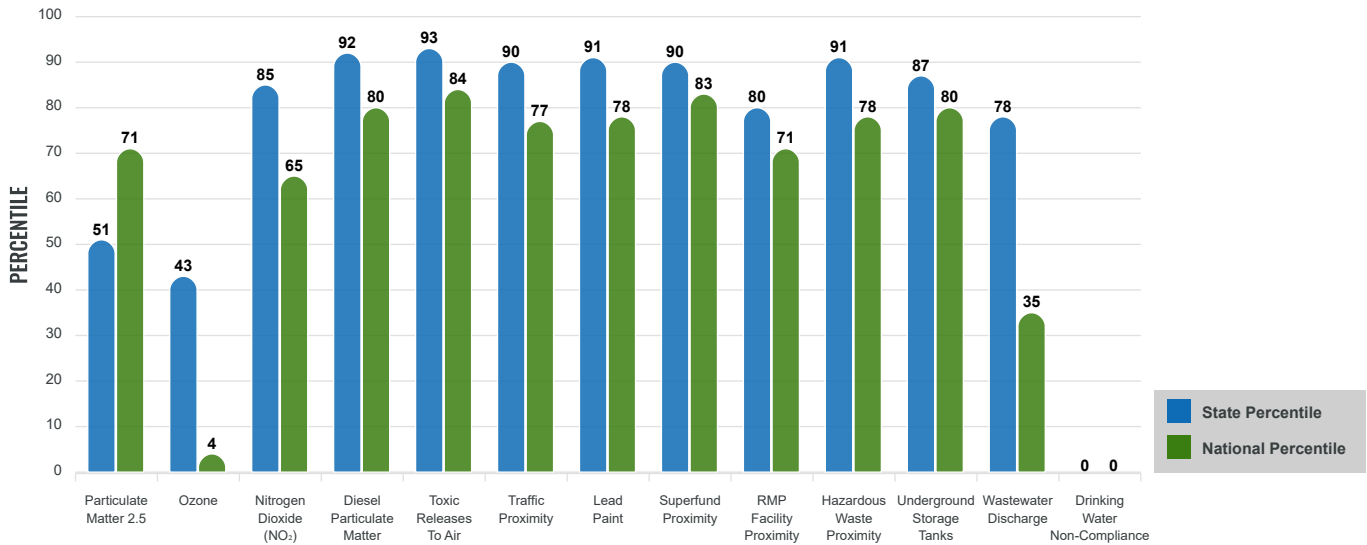
Environmental Justice & Supplemental Indexes

The environmental justice and supplemental indexes are a combination of environmental and socioeconomic information. There are thirteen EJ indexes and supplemental indexes in EJScreen reflecting the 13 environmental indicators. The indexes for a selected area are compared to those for all other locations in the state or nation. For more information and calculation details on the EJ and supplemental indexes, please visit the [EJScreen website](#).

EJ INDEXES

The EJ indexes help users screen for potential EJ concerns. To do this, the EJ index combines data on low income and people of color populations with a single environmental indicator.

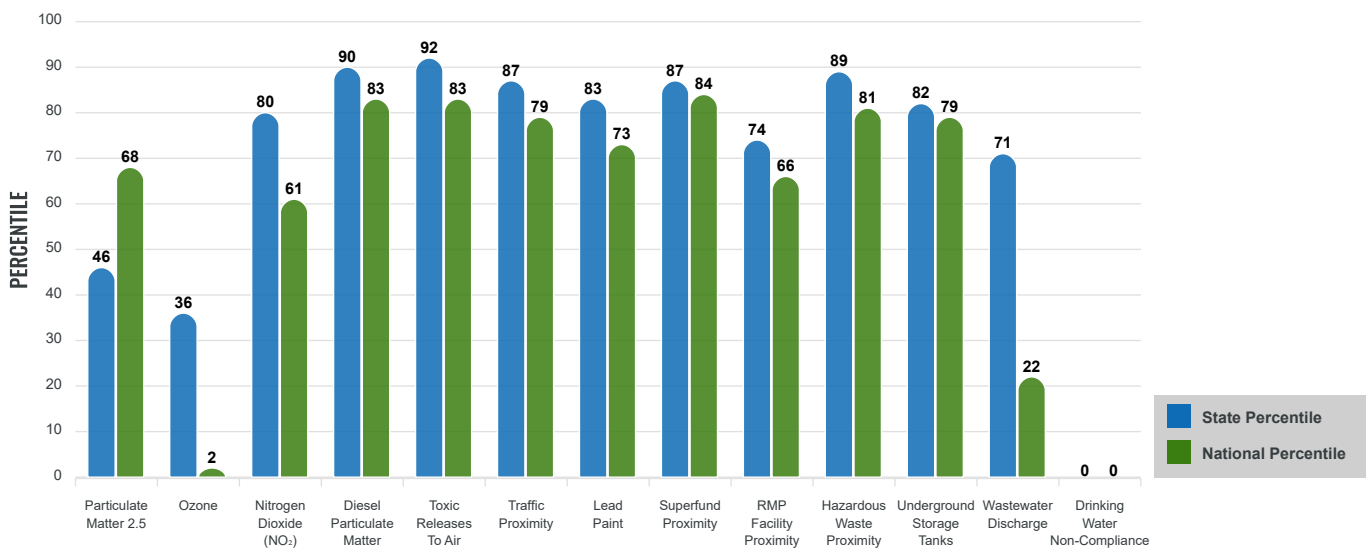
EJ INDEXES FOR THE SELECTED LOCATION



SUPPLEMENTAL INDEXES

The supplemental indexes offer a different perspective on community-level vulnerability. They combine data on percent low income, percent persons with disabilities, percent less than high school education, percent limited English speaking, and percent low life expectancy with a single environmental indicator.

SUPPLEMENTAL INDEXES FOR THE SELECTED LOCATION



Report for 0.25 miles Ring Centered at 47.577423,-122.311091

Report produced August 21, 2024 using EJScreen Version 2.3

EJScreen Environmental and Socioeconomic Indicators Data

SELECTED VARIABLES	VALUE	STATE AVERAGE	PERCENTILE IN STATE	USA AVERAGE	PERCENTILE IN USA
ENVIRONMENTAL BURDEN INDICATORS					
Particulate Matter 2.5 ($\mu\text{g}/\text{m}^3$)	8.87	9.51	34	8.45	71
Ozone (ppb)	50.5	51.8	26	61.8	2
Nitrogen Dioxide (NO_2) (ppbv)	8.7	6.3	84	7.8	61
Diesel Particulate Matter ($\mu\text{g}/\text{m}^3$)	0.822	0.256	98	0.191	99
Toxic Releases to Air (toxicity-weighted concentration)	51,000	1,800	99	4,600	98
Traffic Proximity (daily traffic count/distance to road)	4,300,000	1,200,000	97	1,700,000	89
Lead Paint (% Pre-1960 Housing)	0.67	0.23	92	0.3	84
Superfund Proximity (site count/km distance)	2.5	0.53	96	0.39	97
RMP Facility Proximity (facility count/km distance)	0.64	0.51	71	0.57	70
Hazardous Waste Proximity (facility count/km distance)	13	2.9	97	3.5	93
Underground Storage Tanks (count/ km^2)	19	6.1	91	3.6	95
Wastewater Discharge (toxicity-weighted concentration/m distance)	0.99	300	62	700000	22
Drinking Water Non-Compliance (points)	0	1	0	2.2	0
SOCIOECONOMIC INDICATORS					
Demographic Index USA	1.33	N/A	N/A	1.34	57
Supplemental Demographic Index USA	1.42	N/A	N/A	1.64	42
Demographic Index State	1.9	1.47	74	N/A	N/A
Supplemental Demographic Index State	1.43	1.37	59	N/A	N/A
People of Color	59%	33%	86	40%	71
Low Income	17%	23%	43	30%	31
Unemployment Rate	2%	5%	29	6%	31
Limited English Speaking Households	9%	4%	86	5%	84
Less Than High School Education	10%	8%	72	11%	59
Under Age 5	4%	5%	37	5%	38
Over Age 64	16%	17%	51	18%	48

*Diesel particulate matter index is from the EPA's Air Toxics Data Update, which is the Agency's ongoing, comprehensive evaluation of air toxics in the United States. This effort aims to prioritize air toxics, emission sources, and locations of interest for further study. It is important to remember that the air toxics data presented here provide broad estimates of health risks over geographic areas of the country, not definitive risks to specific individuals or locations. More information on the Air Toxics Data Update can be found at: <https://www.epa.gov/haps/air-toxics-data-update>.

Sites reporting to EPA within defined area:

Superfund	0
Hazardous Waste, Treatment, Storage, and Disposal Facilities	0
Water Dischargers	1
Air Pollution	0
Brownfields	1
Toxic Release Inventory	0

Other community features within defined area:

Schools	0
Hospitals	0
Places of Worship	4

Other environmental data:

Air Non-attainment	No
Impaired Waters	No

Selected location contains American Indian Reservation Lands*	No
Selected location contains a "Justice40 (CEJST)" disadvantaged community	Yes
Selected location contains an EPA IRA disadvantaged community	Yes

Report for 0.25 miles Ring Centered at 47.577423,-122.311091

Report produced August 21, 2024 using EJScreen Version 2.3

EJScreen Environmental and Socioeconomic Indicators Data

HEALTH INDICATORS

INDICATOR	VALUE	STATE AVERAGE	STATE PERCENTILE	US AVERAGE	US PERCENTILE
Low Life Expectancy	18%	18%	50	20%	38
Heart Disease	3.6	4.8	20	5.8	9
Asthma	9.2	10.9	4	10.3	20
Cancer	4.7	6.5	11	6.4	17
Persons with Disabilities	11%	13.4%	37	13.7%	37

CLIMATE INDICATORS

INDICATOR	VALUE	STATE AVERAGE	STATE PERCENTILE	US AVERAGE	US PERCENTILE
Flood Risk	1%	11%	18	12%	14
Wildfire Risk	0%	12%	0	14%	0

CRITICAL SERVICE GAPS

INDICATOR	VALUE	STATE AVERAGE	STATE PERCENTILE	US AVERAGE	US PERCENTILE
Broadband Internet	4%	8%	40	13%	27
Lack of Health Insurance	5%	6%	44	9%	36
Housing Burden	No	N/A	N/A	N/A	N/A
Transportation Access Burden	No	N/A	N/A	N/A	N/A
Food Desert	No	N/A	N/A	N/A	N/A

Report for 0.25 miles Ring Centered at 47.577423,-122.311091

Report produced August 21, 2024 using EJScreen Version 2.3