



Public Participation Plan

**Maralco Cleanup Site
7730 South 202nd Street
Kent, WA**

Toxics Cleanup Program

Washington State Department of Ecology

Northwest Region Office

Shoreline, Washington

November 2023

Publication Information

This document is available on the Department of Ecology's website at:

<https://apps.ecology.wa.gov/cleanupsearch/site/5055>

Cover photo credit

- Maralco site aerial photo; Bridge, 2023

Related Information

- Cleanup site ID: 5055
- Facility site ID: 2067

Contact Information

Toxics Cleanup Program

Northwest Region Office

Tena Seeds

Site Manager

(425) 457-3143, Tena.Seeds@ecy.wa.gov

Ian Fawley

Outreach Planner

(425) 324-5901, Ian.Fawley@ecy.wa.gov

15700 Dayton Ave N.

Shoreline, WA 98133

Phone: (206) 594-0000

Website¹: [Washington State Department of Ecology](http://www.ecology.wa.gov)

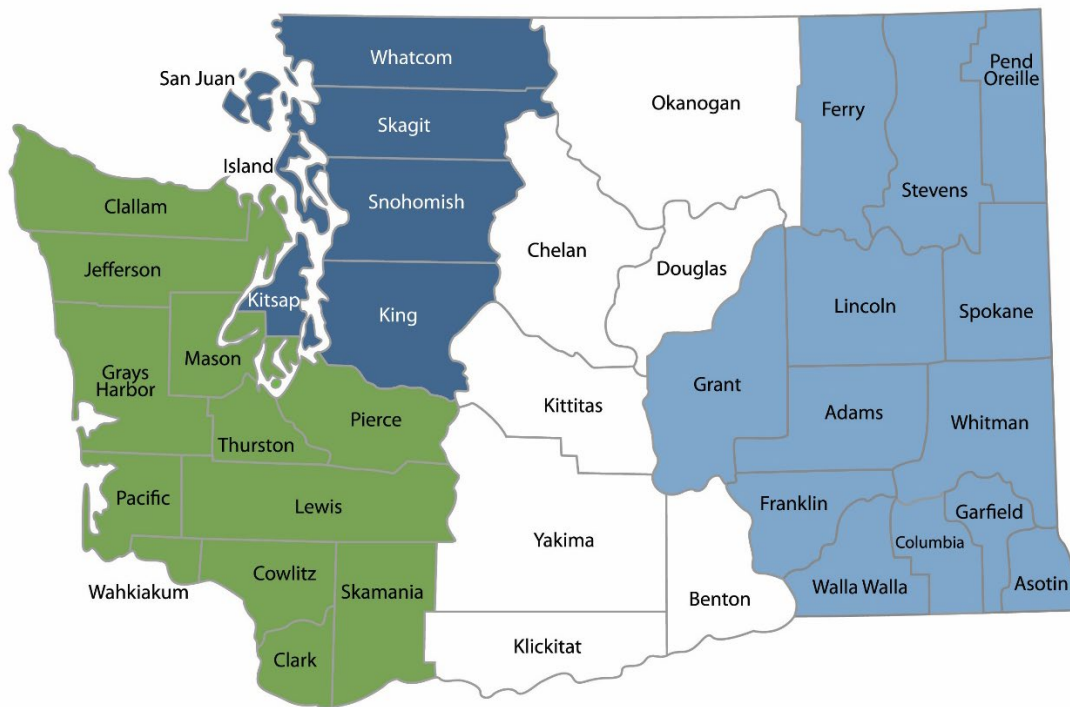
ADA Accessibility

The Department of Ecology is committed to providing people with disabilities access to information and services by meeting or exceeding the requirements of the Americans with Disabilities Act (ADA), Section 504 and 508 of the Rehabilitation Act, and Washington State Policy #188. To request an ADA accommodation, contact Ecology by phone at 360-407-6831 or email at ecyadacoordinator@ecy.wa.gov. For Washington Relay Service or TTY call 711 or 877-833-6341. Visit Ecology's website for more information.

¹ www.ecology.wa.gov/contact

Department of Ecology's Region Offices

Map of Counties Served



| | | | |
|---|---|---------------------------------------|---------------------------------------|
| Southwest Region 360-407-6300 | Northwest Region 206-594-0000 | Central Region 509-575-2490 | Eastern Region 509-329-3400 |
|---|---|---------------------------------------|---------------------------------------|

| Region | Counties served | Mailing Address | Phone |
|---------------------|--|--|--------------|
| Southwest | Clallam, Clark, Cowlitz, Grays Harbor, Jefferson, Mason, Lewis, Pacific, Pierce, Skamania, Thurston, Wahkiakum | PO Box 47775 Olympia, WA 98504 | 360-407-6300 |
| Northwest | Island, King, Kitsap, San Juan, Skagit, Snohomish, Whatcom | PO Box 330316 Shoreline, WA 98133 | 206-594-0000 |
| Central | Benton, Chelan, Douglas, Kittitas, Klickitat, Okanogan, Yakima | 1250 W Alder St Union Gap, WA 98903 | 509-575-2490 |
| Eastern | Adams, Asotin, Columbia, Ferry, Franklin, Garfield, Grant, Lincoln, Pend Oreille, Spokane, Stevens, Walla Walla, Whitman | 4601 N Monroe Spokane, WA 99205 | 509-329-3400 |
| Headquarters | Across Washington | PO Box 46700 Olympia, WA 98504 | 360-407-6000 |

Public Participation Plan

**Maralco Cleanup Site
7730 S 202nd Street, Kent, WA**

Toxics Cleanup Program
Washington State Department of Ecology
Northwest Region Office
Shoreline, WA

November 2023



DEPARTMENT OF
ECOLOGY
State of Washington

Table of Contents

- List of Figures..... 5**
 - Figures..... 5
- Public Involvement in Contamination Cleanup 6**
 - Site contacts..... 6
 - Public Participation Grants 6
- Washington’s Cleanup Laws 7**
 - Model Toxics Control Act..... 7
 - State Environmental Policy Act..... 7
- Site Information 9**
 - Site background 9
 - How the site became contaminated..... 9
 - Contamination 10
 - Cleanup plans..... 10
 - Independent cleanup..... 10
 - Area community 11
 - Environmental Justice..... 13
- Public Participation Activities 15**
 - How we share information with the community..... 16
 - How to share information with us..... 17
 - Americans with Disabilities Act..... 18
- Plan Amendments..... 18**
- Appendices 19**
 - Appendix A. EPA EJScreen Community Report 19

List of Figures

Figures

| | |
|---|----|
| Figure 1: Steps in Washington's Cleanup Process | 8 |
| Figure 3: Abandoned smelter building (2023) | 9 |
| Figure 2: Aerial view of Maralco property parcel | 9 |
| Figure 4: View of Maralco property and wetlands (2023) | 9 |
| Figure 5: Dross pile removal progress (2023) | 10 |
| Figure 6: Google map showing location of Kent, WA | 11 |
| Figure 7: Maralco vicinity map and location in Kent, WA..... | 12 |
| Figure 8: Washington Environmental Health Disparities Map for Maralco site in Kent, WA..... | 14 |
| Figure 9: EPA EJScreen generated map of the outreach impact area for the Maralco site | 15 |

Public Involvement in Contamination Cleanup

The Washington State Department of Ecology (Ecology) developed this public participation plan (plan) in cooperation with 7730 202nd Street, LLC (Owner), the current owner of and party responsible for the cleanup of the Maralco Site. The purpose of the plan is to promote meaningful community involvement during cleanup.

The plan describes ways Ecology will inform the public about contamination investigations and cleanup options throughout the cleanup process of the Maralco Site. Ecology encourages the public to learn about and get involved in decision-making opportunities. This plan identifies how and when the public can get involved during different stages of the investigation and cleanup of contamination.

Site contacts

To be included in the site record, comments about the cleanup process must be submitted during comment periods. Questions and informal comments or information about the site's history are welcome anytime.

Toxics Cleanup Program

Northwest Region Office
15700 Dayton Ave N
Shoreline, WA 98133

Tena Seeds, Site Manager
Tena.Seeds@ecy.wa.gov
(425) 457-3143

Ian Fawley, Outreach Planner
ian.fawley@ecy.wa.gov
(425) 324-5901

Potentially Liable Persons

7730 202nd Street, LLC
c/o Kyle Siekawitch
Senior Director, Development
Bridge Industrial
10655 NE 4th Street
Suite 212
Bellevue, WA 98004

KSiekawitch@bridgeindustrial.com
(425) 749-4325

Public Participation Grants

Grants may be available to neighborhood committees, non-profits, and other groups interested in the site. For contaminated sites, these funds can be used to:

- Hire an expert to help interpret technical information²
- Conduct activities that enhance the public's understanding of, and participation in, the cleanup process

For more information about public participation grants, please contact Faith Wimberley at 425-275-7285 or faith.wimberley@ecy.wa.gov. You may also visit the [Public Participation Grant website](#).³

² Ecology currently does not have a citizen technical advisor for providing technical assistance to citizens on issues related to the investigation and cleanup of the site.

³ ecology.wa.gov/About-us/How-we-operate/Grants-loans/Find-a-grant-or-loan/Public-participation-grants

Washington's Cleanup Laws

Ecology uses the Model Toxics Control Act (MTCA) and accompanying regulations for cleanup activities.

This plan is required under MTCA, a law that passed in 1989. MTCA provides guidelines for contaminated site cleanup in Washington State and sets standards to ensure the cleanup protects human health and the environment.

Model Toxics Control Act

MTCA began as a grassroots citizen's initiative in 1988 and started the process of systematically cleaning up contaminated sites in Washington. Under MTCA, a current or past property owner or operator may be held responsible for cleaning up contamination on, or coming from, their property to standards that are safe for human health and the environment.

Ecology enacts [MTCA](#)⁴ and oversees cleanups in the state and issues regulations and guidance governing those cleanups. The regulations are found in [Chapter 173-340 Washington Administrative Code \(WAC\)](#).⁵ Ecology investigates reports of property contamination, and if the contamination is seen as a significant threat to human health or the environment, the contaminated property is placed on the Confirmed and Suspected Contaminated Sites List, and the cleanup process begins.

Public participation is an important part of cleanup under the MTCA process. Participation needs are assessed at each cleanup site according to the level of public interest and the degree of risk posed by the contamination. Individuals who live near the site, community groups, businesses, government, other organizations, and interested parties have the opportunity to get involved by commenting on the cleanup process.

Under the MTCA, the cleanup process generally includes multiple steps (see Figure 1 on page 8), with opportunities for the public to review and comment on cleanup documents. In addition, a partial cleanup (called an interim action) can occur at any time during the cleanup process. The public is provided an opportunity to review and comment on planned interim action work as well.

State Environmental Policy Act

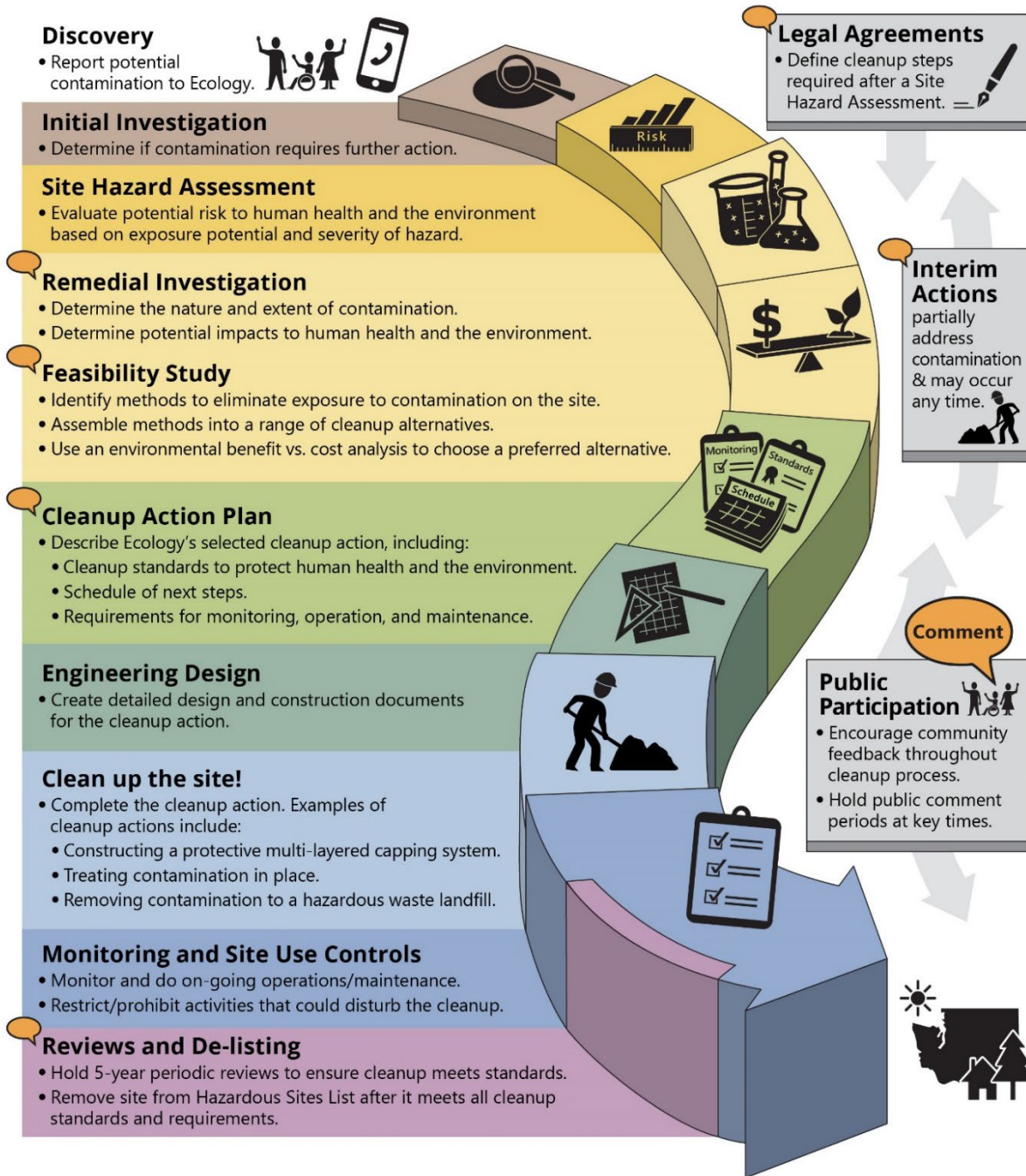
MTCA cleanups also require evaluation under the State Environmental Policy Act (SEPA; [Chapter 197-11 WAC](#))⁶. Under SEPA, the potential for significant adverse environmental impacts from a project or action must be evaluated by state and local agencies when making decisions. This evaluation is subject to public review and comment in parallel with cleanup documents.

⁴ <https://www.ecology.wa.gov/mtca>

⁵ <https://apps.ecology.wa.gov/publications/publications/9406.pdf>

⁶ <https://apps.leg.wa.gov/wac/default.aspx?cite=197-11>

Washington's Formal Cleanup Process



 **Washington's Cleanup Law**
Model Toxics Control Act (MTCA)

MTCA defines the cleanup process. This public-initiated environmental law directs upland cleanups (on land or in groundwater) and sediment cleanups (in freshwater or marine environments). Ecology enacts MTCA and regulates the cleanup process.

September 2019
Ecology Publication 19-09-166

Figure 1: Steps in Washington's Cleanup Process⁷

⁷ <https://apps.ecology.wa.gov/publications/SummaryPages/1909166.html>

Site Information

Site background

The Maralco Site is located at 7730 South 202nd Street in Kent, WA. The Owner recently purchased the approximately 12-acre property in the Kent industrial area. The property also includes a 45,000 square foot building near the western boundary that has been largely abandoned since 1986. The eastern portion of the property is covered by wetlands.

How the site became contaminated

Maralco Aluminum Company, Inc. operated a secondary aluminum smelter from 1980 to 1986. The smelter produced aluminum ingots from recycled aluminum cans, Kawecki-Berylco, Inc. (KBI) dross, and scrap metal using the molten salt process. The wastes created from this process included black dross which is typically a mixture of aluminum and metals (primarily arsenic, barium, copper, and mercury) or “salt cake” (fluorides and chlorides). Washed oxides (aluminum oxide) were produced when water soluble components of the dross (typically salts) were removed from the dross as part of re-processing.

Past smelting processes generated approximately 50,000 tons of black dross. Several waste piles remain on the property from the smelting operation (see photos to right and next page). Other by-products such as the aluminum oxide were also stockpiled on the property and inside the smelter building.

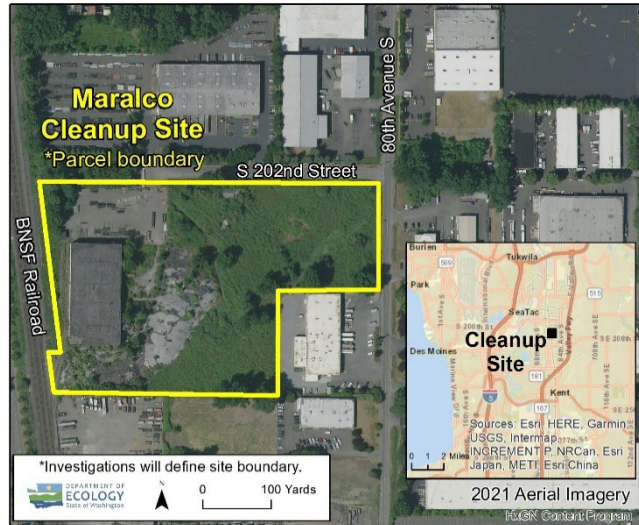


Figure 2: Aerial view of Maralco property parcel



Figure 3: Abandoned smelter building (2023)



Figure 4: View of Maralco property and wetlands (2023)

Contamination

Investigations through 2023 found the following contaminants of concern on the property:

- **Soil:** Metals, total petroleum hydrocarbons (TPH) from diesel fuel
- **Groundwater:** Metals, TPH, chloride, fluoride, and ammonia
- **Sediment:** Metals

Cleanup plans

In 2023, Ecology negotiated a legal agreement (Agreed Order) for public review that requires the Owner to investigate environmental conditions, complete a Remedial Investigation (RI), Feasibility Study (FS), and a draft Cleanup Action Plan (dCAP). Each of these steps will require a public comment period.

Independent cleanup

Before the 2023 Agreed Order, cleanup work at the Maralco site was completed through Ecology's Voluntary Cleanup Program ([VCP](#)⁸), which provides technical help to owners of contaminated sites to fulfill the Model Toxics Control Act (MTCA) cleanup standards.

The Owner currently expects to have the stockpiles in the abandoned building and the outdoor dross pile removed by the end of 2023.



Figure 5: Dross pile removal progress (2023)

Other VCP investigation and cleanup work completed through August 2023 included:

- Soil and groundwater sampling, including an assessment of soil conditions below the outdoor dross pile.
- Sediment sampling of the stormwater pond and the drainage ditch both on- and off-property.
- Reassessment of the outdoor dross pile volume.
- Assessment of former diesel source area and extent of metals contamination.
- Indoor stockpile measurement and sampling.

Future cleanup work (after the final 2023 legal agreement) will occur under the [formal cleanup process](#)⁹.

⁸ <https://ecology.wa.gov/Spills-Cleanup/Contamination-cleanup/Voluntary-Cleanup-Program>

⁹ <https://ecology.wa.gov/Spills-Cleanup/Contamination-cleanup/Cleanup-process>

Area community

Neighborhood

Kent is located in King County, Washington. It has a total area of 33.7 square miles and is the sixth largest city in the state. Kent is the second oldest incorporated city in Washington, after Seattle. It is in the heart of the Seattle–Tacoma metropolitan area, located 19 miles south of Seattle and 19 miles northeast of Tacoma. The 12-acre Maralco site is located approximately two miles east of Interstate 5, and three miles north of downtown Kent.

Kent is generally divided into 3 sections:

- **West Hill:** Located along Interstate 5. This area is zoned for residential and commercial use.
- **The Valley:** Commercial and industrial area with some medium-density residential areas. Residents use a significant amount of [Green River](https://en.wikipedia.org/wiki/Green_River_(Duwamish_River_tributary))¹⁰ park land for outdoor recreational activities such as walking, hiking, and fishing.
- **East Hill:** Mostly residential with some retail businesses.

Maralco is located in the industrial and commercial part of Kent, known locally as The Valley. (See vicinity map on page 13.)

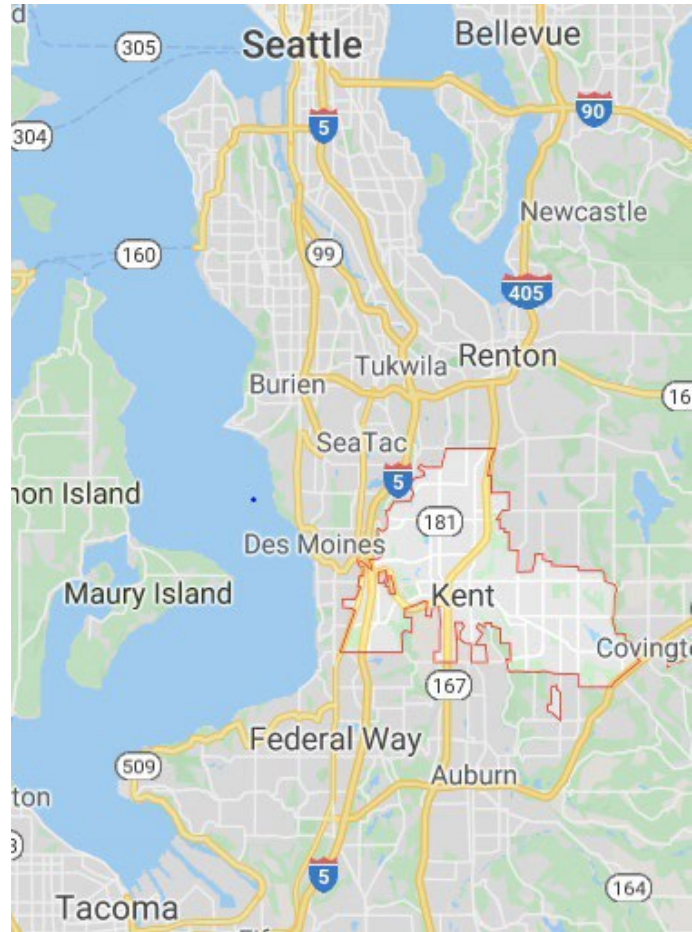


Figure 6: Google map showing location of Kent, WA

¹⁰ [https://en.wikipedia.org/wiki/Green_River_\(Duwamish_River_tributary\)](https://en.wikipedia.org/wiki/Green_River_(Duwamish_River_tributary))

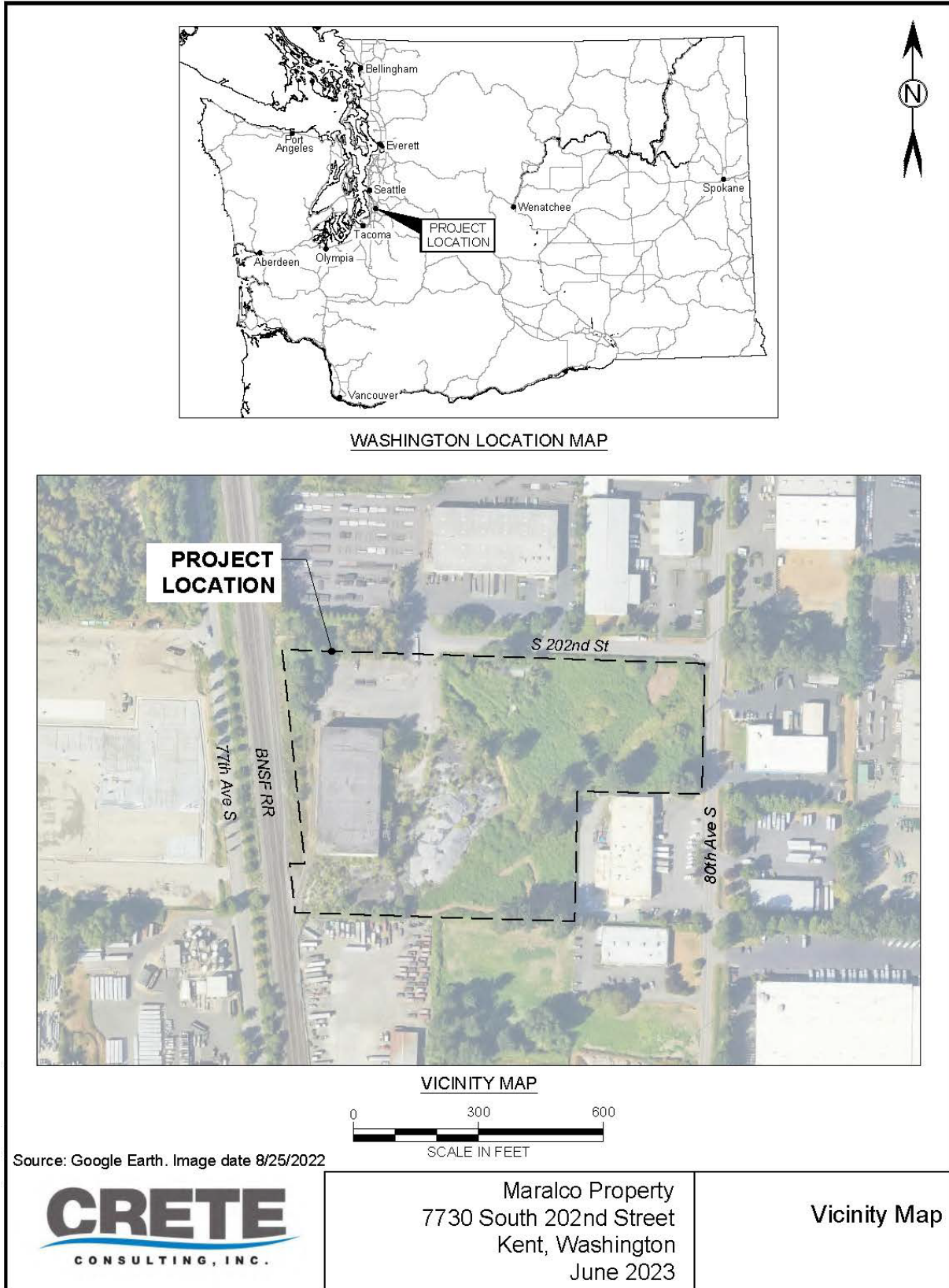


Figure 7: Maralco vicinity map and location in Kent, WA

Tribal involvement

Ecology invites the federally recognized Muckleshoot Tribe, Puyallup Tribe, and Snoqualmie Tribe to engage with any decision-making process for this site, and Ecology will ensure these Tribes have ample opportunity to be involved throughout the process on a government-to-government basis. We will also engage with the Duwamish Tribe.

Environmental Justice

Washington Environmental Health Disparity Map

The [Washington Environmental Health Disparity Map](#)¹¹ evaluates environmental health risk factors in communities.

Ecology does not interpret rankings as absolute values, and we do not use them to diagnose a community health issue or to label a community. Environmental health disparity is ranked on a scale of 1-10 (low to high). The census tract for the Site ranks 10 for environmental health risk. (See Figure 8).

The Washington State Department of Health mapping tool model was “specifically adapted from CalEnviroScreen – a cumulative environmental impacts assessment mapping tool developed by CalEPA and used in California. – It estimates a cumulative environmental health impact score for each census tract reflecting pollutant exposures and factors that affect people’s vulnerability to environmental pollution.

The model is based on a conceptual formula of Risk = Threat * Vulnerability, where threat and vulnerability are based on several indicators.

The threat is represented by indicators that account for pollution burden, which is a combination of environmental effects and environmental exposures in communities. Environmental effects include indicators that account for adverse environmental quality generally, even when population contact with an environmental hazard is unknown or uncertain. Environmental exposures include the levels of certain pollutants that populations come into contact with.

Vulnerability is represented by indicators of socioeconomic factors and sensitive populations for which there is clear evidence that they may affect susceptibility or vulnerability to an increased pollution burden. Indicators in socioeconomic factors measure population characteristics that modify the pollution burden itself. Sensitive populations refer to those who are at greater risk due to intrinsic biological vulnerability to environmental stressors.

¹¹ <https://fortress.wa.gov/doh/wtnibl/WTNIBL/>

In the model, threat is multiplied by vulnerability in order to reflect the scientific literature that indicates population characteristics often modify and amplify the impact of pollution exposures on certain vulnerable populations. The rankings help to compare health and social factors that may contribute to disparities in a community.”

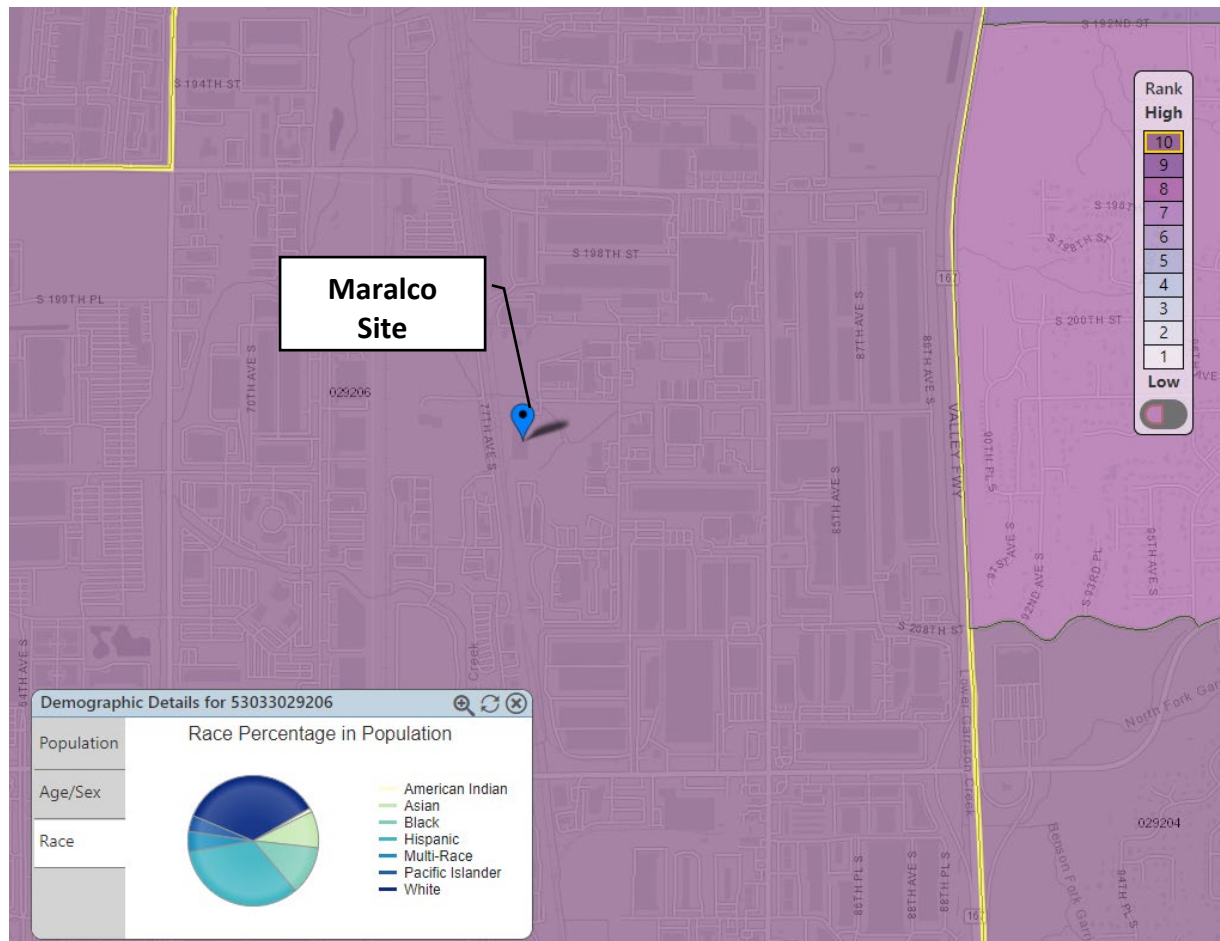


Figure 8: Washington Environmental Health Disparities Map for Maralco site in Kent, WA

Environmental Justice Screening and Mapping Tool

The data below was generated for a one-mile area around the site using the Environmental Protection Agency’s [Environmental Justice Screening and Mapping Tool](https://ejscreen.epa.gov/mapper/index.html) (EJScreen)¹². The data reveals a diverse and linguistically isolated population. Reaching underserved populations within the project area is a priority. See Appendix A for the “EPA EJScreen Community Report.”

Demographic Indicators nearing the EPA 80th percentile threshold:

- People of Color – 92nd percentile
- Limited English Speaking Households – 87th percentile

¹² <https://ejscreen.epa.gov/mapper/index.html>

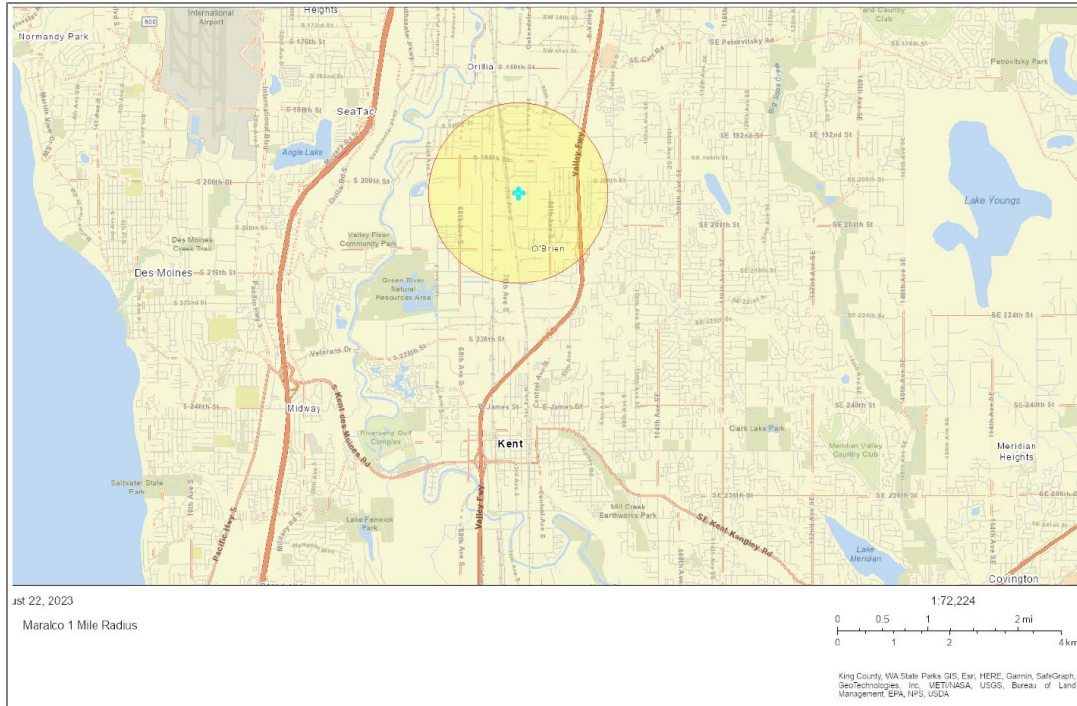


Figure 9: EPA EJScreen generated map of the outreach impact area for the Maralco site

Ecology will plan our public outreach to consider this population’s needs. Ecology will reach out to cultural and community organizations as part of our outreach and provide information in other languages as appropriate following federal guidance¹³. The non-English language most widely spoken in the area is Spanish (23%), with Tagalog, Vietnamese, and Korean also spoken (less than 5% for each language). When appropriate, Ecology will provide outreach in these languages. We strive to make our public participation efforts as inclusive as possible and welcome your input about how to best reach the nearby community.

Public Participation Activities

Members of the public may ask questions, submit informal comments, or share site information at any time. Interested parties do not need to wait for a formal public comment period to contact Ecology.

However, to be included in the formal site record, comments about the site investigation, cleanup alternatives, or cleanups must be submitted during formal comment periods. In addition, the public is invited to review site documents before they become final. This is the most direct and influential way to learn more about the site and be involved in the cleanup’s decision-making.

¹³ Guidance to Environmental Protection Agency Financial Assistance Recipients Regarding Title VI Prohibition Against National Origin Discrimination Affecting Limited English Proficient Persons, 69 Fed. Reg. § 35602 (June 15, 2004).

How we share information with the community

During specific stages of the cleanup, Ecology will mail notices about public comment periods to addresses surrounding the site. The mailing list area will include addresses within a 0.5-mile radius of the site and other interested organizations and individuals. These notices will provide general information about the site, contact information for submitting comments, and times and locations of public meetings or hearings or how to request one if not yet scheduled.

Ecology may also develop documents outside of comment periods to keep the community updated on the site's status. These informational documents will be available online and at document repositories. Print copies may be mailed to the nearby community if we feel the message warrants the associated cost and resources.

Comment period notices and other site announcements may also be posted in various locations throughout the community (for example, local businesses, schools, libraries).

Postal mailing list

Ecology maintains a mailing list that includes addresses within a 0.5-mile radius of the site and relevant local, state, and federal government contacts.

These people receive public comment notices when draft documents are available.

We will add additional individuals, organizations, and other interested parties to the mailing list as requested. If you would like to be added to the mailing list for this site, please contact Ian Fawley at 425-324-5901 or Ian.Fawley@ecy.wa.gov.

Site Register

Public comment periods, events, and other cleanup notices are published in Ecology's [Site Register](#).¹⁴ To receive the *Site Register* by email, please [subscribe online](#),¹⁵ or contact Sarah Kellington at sarah.kellington@ecy.wa.gov or 360-280-3167.

Newspaper display ads or legal notices

We will announce public comment periods and events for this site in ads or notices published in the [Kent Reporter](#)¹⁶, [elSieteDias](#)¹⁷, and [Northwest Asian Weekly](#)¹⁸.

Email lists

Ecology maintains an email list to update interested persons about this site. If you would like to be added to the email list for this site, please contact Ian Fawley at 425-324-5901 or Ian.Fawley@ecy.wa.gov.

¹⁴ ecology.wa.gov/Regulations-Permits/Guidance-technical-assistance/Site-Register-lists-and-data

¹⁵ https://public.govdelivery.com/accounts/WAECY/subscriber/new?topic_id=WAECY_118

¹⁶ <https://www.kentreporter.com/>

¹⁷ <https://elsietedias.com/>

¹⁸ <https://nwasianweekly.com/>

Ecology's website and social media platforms

We maintain a website for the [Maralco cleanup site](#)¹⁹. The website provides site information, and you may download cleanup documents.

We will also publish notice on our [Public Input & Events Listing](#).²⁰

We may also share information about cleanup sites through [news releases, our ECOconnect blog, and social media](#).²¹

Places to see print documents

During public comment periods when review locations are accessible, you can find print documents at the following locations:

King County Library - Kent Library
212 2nd Avenue N
Kent, WA 98032
Phone: (253) 859-3330

Washington Department of Ecology
Northwest Region Office
15700 Dayton Ave N
Shoreline, WA 98133

To schedule an appointment, please contact the Northwest Region Office Central Records staff at (206) 594-0016 or nwro_public_request@ecy.wa.gov.

Signs around the cleanup site

We may also install signs displaying information about project status, traffic impacts, and health risks around the cleanup site.

How to share information with us

At minimum, MTCA requires 30-day public comment periods for draft cleanup documents and 14-day comment periods SEPA documents. SEPA documents are often made available for public review with other cleanup documents. In that case, we combine the comment periods, and they last at least 30 days. We may hold comment periods longer than 30 days.

We may also identify public concerns and cleanup goals by meeting with and soliciting information from interested community members and organizations. To collaborate with us about this site, please contact Ian Fawley at 425-324-5901 or ian.fawley@ecy.wa.gov.

¹⁹ <https://apps.ecology.wa.gov/cleanupsearch/site/5055>

²⁰ ecology.wa.gov/Events/Search/Listing

²¹ ecology.wa.gov/About-us/Get-to-know-us/News

Public comment periods

Formal 30-day comment periods allow interested members of the public to comment on draft documents, legal agreements, and proposed cleanup actions. If there is significant interest, Ecology may extend the public comment period. When Ecology oversees SEPA determinations, we hold comment periods for at least two weeks and may extend to 30 days or more when other cleanup documents are concurrently available for review.

Following the comment period, we publish all the input we received and respond to significant comments and questions, as appropriate. If the comments result in significant changes to the cleanup documents, then the documents will be revised and re-issued for public review. If the comments do not result in significant changes, then they become final.

Public events

We hold in-person and online public meetings, workshops, open houses, and public hearings based on community interest. If we have not scheduled a meeting, we will hold one if 10 people request it, and this may cause us to extend a public comment period so the meeting occurs during it.

Events are held at locations close to the site that meet Americans with Disabilities Act standards. Public meetings, workshops, open houses, and hearings are always announced in advance using a variety of methods.

Americans with Disabilities Act

To request ADA accommodation for disabilities, or printed materials in a format for the visually impaired, contact the Ecology ADA Coordinator at 360-407-6831 or ecyadacoordinator@ecy.wa.gov, or visit our [ADA website](#).²² People with impaired hearing may call Washington Relay Service at 711. People with speech disability may call TTY at 877-833-6341.

Plan Amendments

Ecology developed this plan following MTCA regulations (WAC 173-340-600). We review it as the cleanup progresses and amend it as necessary. You may suggest amendments to Ian Fawley at 425-324-5901 or Ian.Fawley@ecy.wa.gov. This plan includes information for the public regarding opportunities for public involvement and comment. The outreach activities discussed in this section reflect Ecology's current plans for keeping the public informed and providing ways for those interested in the site to communicate their concerns and questions to us.

If you feel the planned outreach activities and mechanisms described in this plan are insufficient, or should otherwise be modified, we will work to find solutions. New outreach activities or outreach tools established as a result can be implemented right away, with or without amending this plan.

²² <https://ecology.wa.gov/About-us/Accessibility-equity/Accessibility>

Appendices

Appendix A. EPA EJScreen Community Report

EPA's EJSCREEN report for a 1-mile radius of the Maralco site.

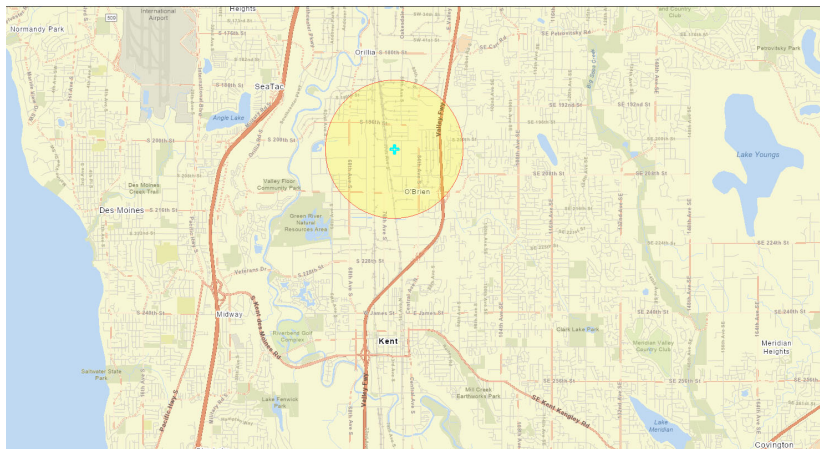


EJScreen Community Report

This report provides environmental and socioeconomic information for user-defined areas, and combines that data into environmental justice and supplemental indexes.

Kent, WA

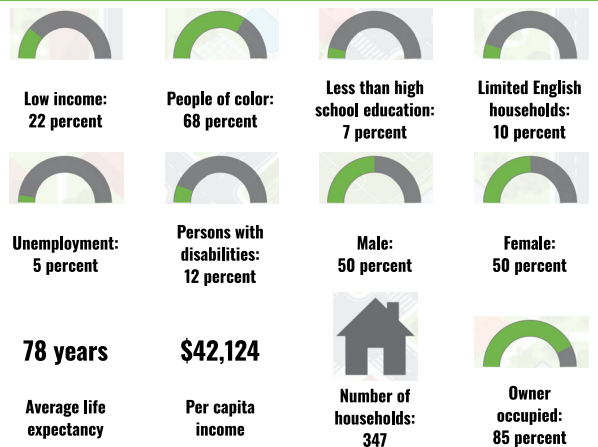
1 mile Ring Centered at 47.421119,-122.235432
 Population: 1,037
 Area in square miles: 3.14



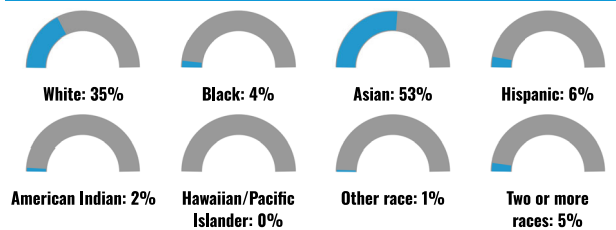
8/22/2023
 Marako 1 Mile Radius

King County, WA State Parks, US, Env. HEPR, Camm, SafeGraph, GeoNames.org, US: 188718424, USGS, Bureau of Land Management, EPA, NPS, USGS

COMMUNITY INFORMATION



BREAKDOWN BY RACE



BREAKDOWN BY AGE



LIMITED ENGLISH SPEAKING BREAKDOWN



LANGUAGES SPOKEN AT HOME

| LANGUAGE | PERCENT |
|--------------------------------|---------|
| English | 53% |
| Spanish | 23% |
| French, Haitian, or Cajun | 4% |
| Other Indo-European | 1% |
| Korean | 1% |
| Tagalog (including Filipino) | 2% |
| Other Asian and Pacific Island | 10% |
| Arabic | 3% |
| Other and Unspecified | 3% |
| Total Non-English | 47% |

Notes: Numbers may not sum to totals due to rounding. Hispanic population can be of any race. Source: U.S. Census Bureau, American Community Survey (ACS) 2017-2021. Life expectancy data comes from the Centers for Disease Control.

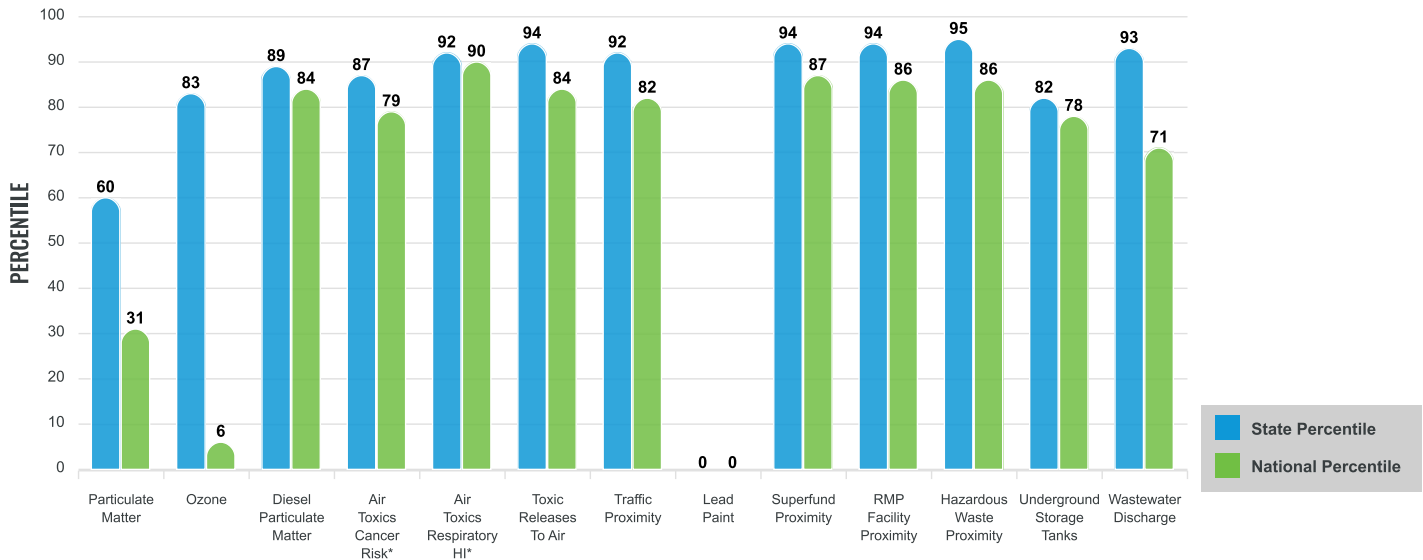
Environmental Justice & Supplemental Indexes

The environmental justice and supplemental indexes are a combination of environmental and socioeconomic information. There are thirteen EJ indexes and supplemental indexes in EJScreen reflecting the 13 environmental indicators. The indexes for a selected area are compared to those for all other locations in the state or nation. For more information and calculation details on the EJ and supplemental indexes, please visit the [EJScreen website](#).

EJ INDEXES

The EJ indexes help users screen for potential EJ concerns. To do this, the EJ index combines data on low income and people of color populations with a single environmental indicator.

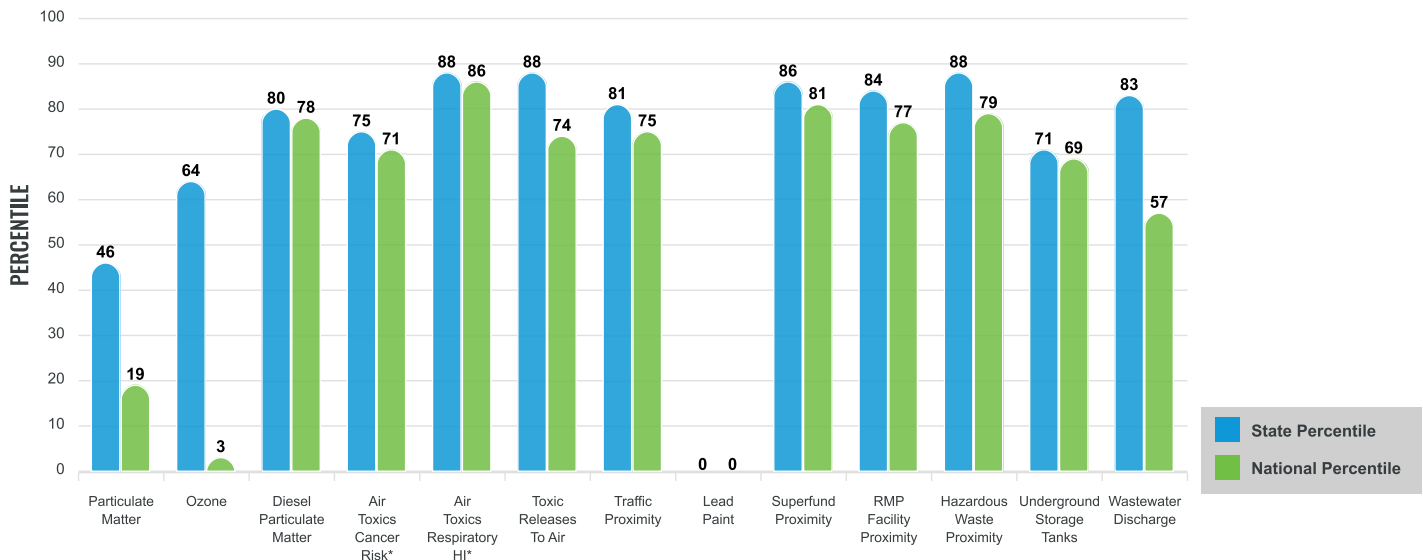
EJ INDEXES FOR THE SELECTED LOCATION



SUPPLEMENTAL INDEXES

The supplemental indexes offer a different perspective on community-level vulnerability. They combine data on percent low-income, percent linguistically isolated, percent less than high school education, percent unemployed, and low life expectancy with a single environmental indicator.

SUPPLEMENTAL INDEXES FOR THE SELECTED LOCATION



These percentiles provide perspective on how the selected block group or buffer area compares to the entire state or nation.

Report for 1 mile Ring Centered at 47.421119,-122.235432

EJScreen Environmental and Socioeconomic Indicators Data

| SELECTED VARIABLES | VALUE | STATE AVERAGE | PERCENTILE IN STATE | USA AVERAGE | PERCENTILE IN USA |
|---|--------|---------------|---------------------|-------------|-------------------|
| POLLUTION AND SOURCES | | | | | |
| Particulate Matter (µg/m ³) | 6.64 | 7.02 | 33 | 8.08 | 14 |
| Ozone (ppb) | 50 | 49.8 | 54 | 61.6 | 2 |
| Diesel Particulate Matter (µg/m ³) | 0.445 | 0.355 | 72 | 0.261 | 87 |
| Air Toxics Cancer Risk* (lifetime risk per million) | 30 | 27 | 37 | 25 | 52 |
| Air Toxics Respiratory HI* | 0.5 | 0.39 | 74 | 0.31 | 92 |
| Toxic Releases to Air | 2,800 | 1,800 | 85 | 4,600 | 78 |
| Traffic Proximity (daily traffic count/distance to road) | 330 | 190 | 86 | 210 | 84 |
| Lead Paint (% Pre-1960 Housing) | 0.0036 | 0.23 | 15 | 0.3 | 0 |
| Superfund Proximity (site count/km distance) | 0.49 | 0.18 | 91 | 0.13 | 94 |
| RMP Facility Proximity (facility count/km distance) | 1.3 | 0.4 | 93 | 0.43 | 92 |
| Hazardous Waste Proximity (facility count/km distance) | 8.6 | 1.6 | 96 | 1.9 | 95 |
| Underground Storage Tanks (count/km ²) | 3.9 | 6.3 | 63 | 3.9 | 72 |
| Wastewater Discharge (toxicity-weighted concentration/m distance) | 0.0016 | 0.024 | 89 | 22 | 52 |
| SOCIOECONOMIC INDICATORS | | | | | |
| Demographic Index | 45% | 28% | 85 | 35% | 70 |
| Supplemental Demographic Index | 13% | 12% | 63 | 14% | 50 |
| People of Color | 68% | 32% | 92 | 39% | 77 |
| Low Income | 22% | 24% | 54 | 31% | 41 |
| Unemployment Rate | 5% | 5% | 57 | 6% | 56 |
| Limited English Speaking Households | 10% | 4% | 87 | 5% | 84 |
| Less Than High School Education | 7% | 8% | 60 | 12% | 47 |
| Under Age 5 | 4% | 6% | 38 | 6% | 40 |
| Over Age 64 | 16% | 16% | 54 | 17% | 51 |
| Low Life Expectancy | 19% | 18% | 66 | 20% | 50 |

*Diesel particulate matter, air toxics cancer risk, and air toxics respiratory hazard index are from the EPA's Air Toxics Data Update, which is the Agency's ongoing, comprehensive evaluation of air toxics in the United States. This effort aims to prioritize air toxics, emission sources, and locations of interest for further study. It is important to remember that the air toxics data presented here provide broad estimates of health risks over geographic areas of the country, not definitive risks to specific individuals or locations. Cancer risks and hazard indices from the Air Toxics Data Update are reported to one significant figure and any additional significant figures here are due to rounding. More information on the Air Toxics Data Update can be found at: <https://www.epa.gov/naps/air-toxics-data-update>.

Sites reporting to EPA within defined area:

| | |
|--|----|
| Superfund | 1 |
| Hazardous Waste, Treatment, Storage, and Disposal Facilities | 10 |
| Water Dischargers | 63 |
| Air Pollution | 10 |
| Brownfields | 7 |
| Toxic Release Inventory | 22 |

Other community features within defined area:

| | |
|-------------------------|---|
| Schools | 0 |
| Hospitals | 0 |
| Places of Worship | 0 |

Other environmental data:

| | |
|--------------------------|-----|
| Air Non-attainment | Yes |
| Impaired Waters | Yes |

| | |
|--|-----|
| Selected location contains American Indian Reservation Lands* | No |
| Selected location contains a "Justice40 (CEJST)" disadvantaged community | Yes |
| Selected location contains an EPA IRA disadvantaged community | Yes |

Report for 1 mile Ring Centered at 47.421119,-122.235432

EJScreen Environmental and Socioeconomic Indicators Data

HEALTH INDICATORS

| INDICATOR | HEALTH VALUE | STATE AVERAGE | STATE PERCENTILE | US AVERAGE | US PERCENTILE |
|---------------------------|--------------|---------------|------------------|------------|---------------|
| Low Life Expectancy | 19% | 18% | 66 | 20% | 50 |
| Heart Disease | 4.6 | 5.3 | 32 | 6.1 | 21 |
| Asthma | 9.1 | 10.5 | 10 | 10 | 25 |
| Cancer | 6 | 6.3 | 41 | 6.1 | 43 |
| Persons with Disabilities | 13.4% | 13.1% | 56 | 13.4% | 56 |

CLIMATE INDICATORS

| INDICATOR | HEALTH VALUE | STATE AVERAGE | STATE PERCENTILE | US AVERAGE | US PERCENTILE |
|---------------|--------------|---------------|------------------|------------|---------------|
| Flood Risk | 6% | 11% | 52 | 12% | 45 |
| Wildfire Risk | 0% | 12% | 0 | 14% | 0 |

CRITICAL SERVICE GAPS

| INDICATOR | HEALTH VALUE | STATE AVERAGE | STATE PERCENTILE | US AVERAGE | US PERCENTILE |
|--------------------------|--------------|---------------|------------------|------------|---------------|
| Broadband Internet | 3% | 9% | 32 | 14% | 21 |
| Lack of Health Insurance | 6% | 6% | 54 | 9% | 42 |
| Housing Burden | Yes | N/A | N/A | N/A | N/A |
| Transportation Access | Yes | N/A | N/A | N/A | N/A |
| Food Desert | No | N/A | N/A | N/A | N/A |

Footnotes

Report for 1 mile Ring Centered at 47.421119,-122.235432