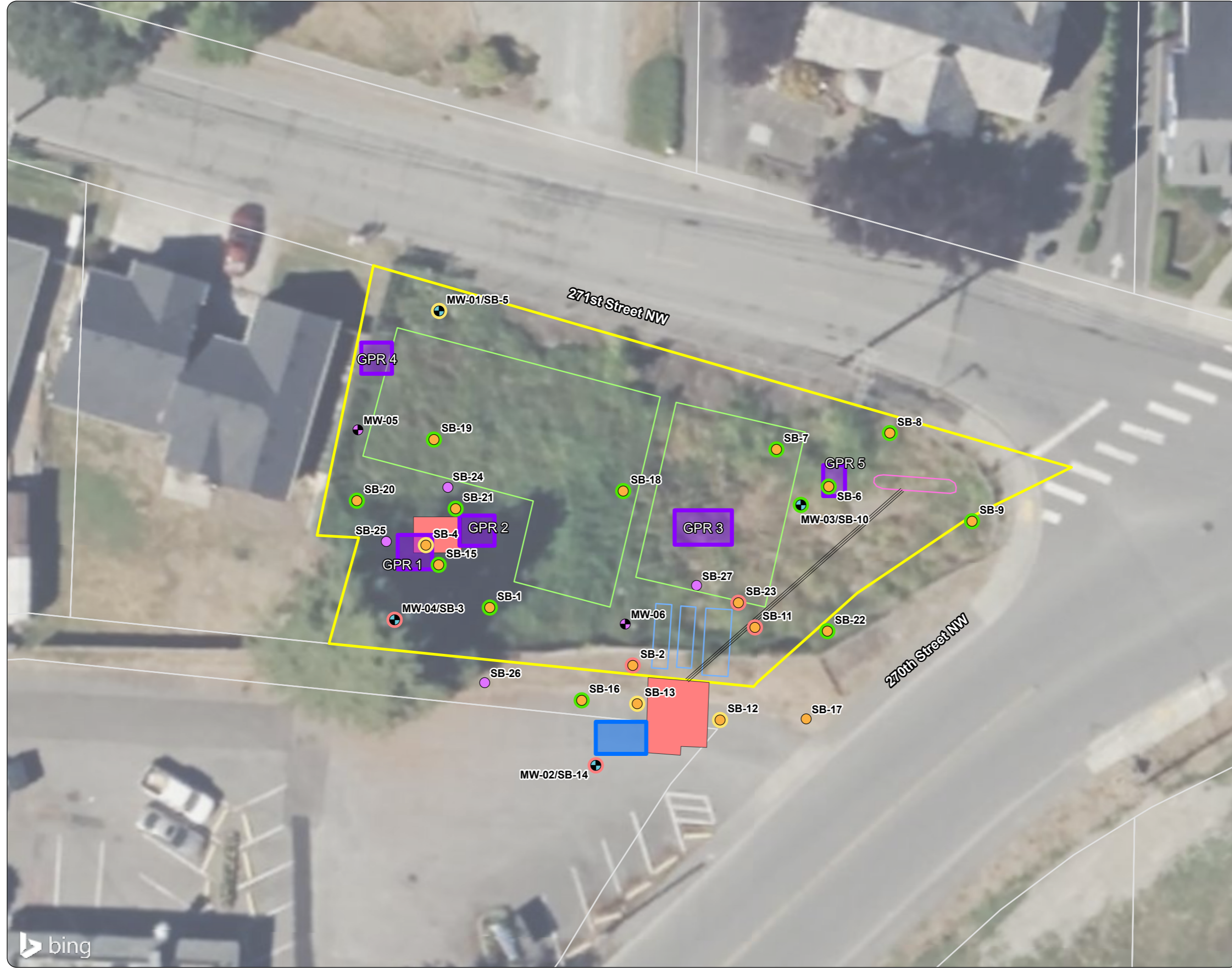


Project: 1030.08 Produced By: gjaravata Approved By: Print Date: 7/31/2024 Path: X:\0_MFA_Projects\1030\08\031Prom\1030_08_003_001.aprx

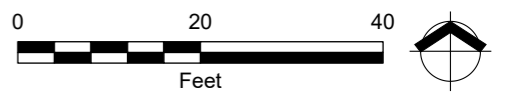
**Figure 1-1
Previous Sample Results
and Proposed Sample
Locations**
Raplee Property
Stanwood, Washington



Legend

- Historical Soil Borings
- Monitoring Well
- Former Product Lines
- Tax Lot
- Existing UST
- Former Building
- Former Service Island
- Former UST
- July 2024 GPR Anomaly
- September 2024 GPR Anomaly
- Property Parcel
- Proposed Boring
- Proposed Monitoring Well

Notes:
 All property feature locations are approximate and were obtained from previous reports (Pinnacle 2005; SAIC 2006).
Green halo = Petroleum, BTEX, or lead non-detect or detected below 0.1 × the CUL.
Yellow halo = Petroleum, BTEX, or lead detected between the CUL and 0.1 × the CUL.
Red halo = Petroleum, BTEX, or lead detected above the CUL.
 BTEX = benzene, toluene, ethylbenzene, and xylenes.
 CUL = MTCA Method A or Method B vapor intrusion cleanup level
 Petroleum = gasoline-range hydrocarbons, diesel-range hydrocarbons, and/or motor oil range hydrocarbons.
 UST = underground storage tank.
 No samples were collected at SB-17.



Source: Aerial imagery obtained from Bing. Property boundary obtained from Snohomish County GIS.



This product is for informational purposes and may not have been prepared for, or be suitable for, legal, engineering, or surveying purposes. Users of this information should review or consult the primary data and information sources to ascertain the usability of the information.

