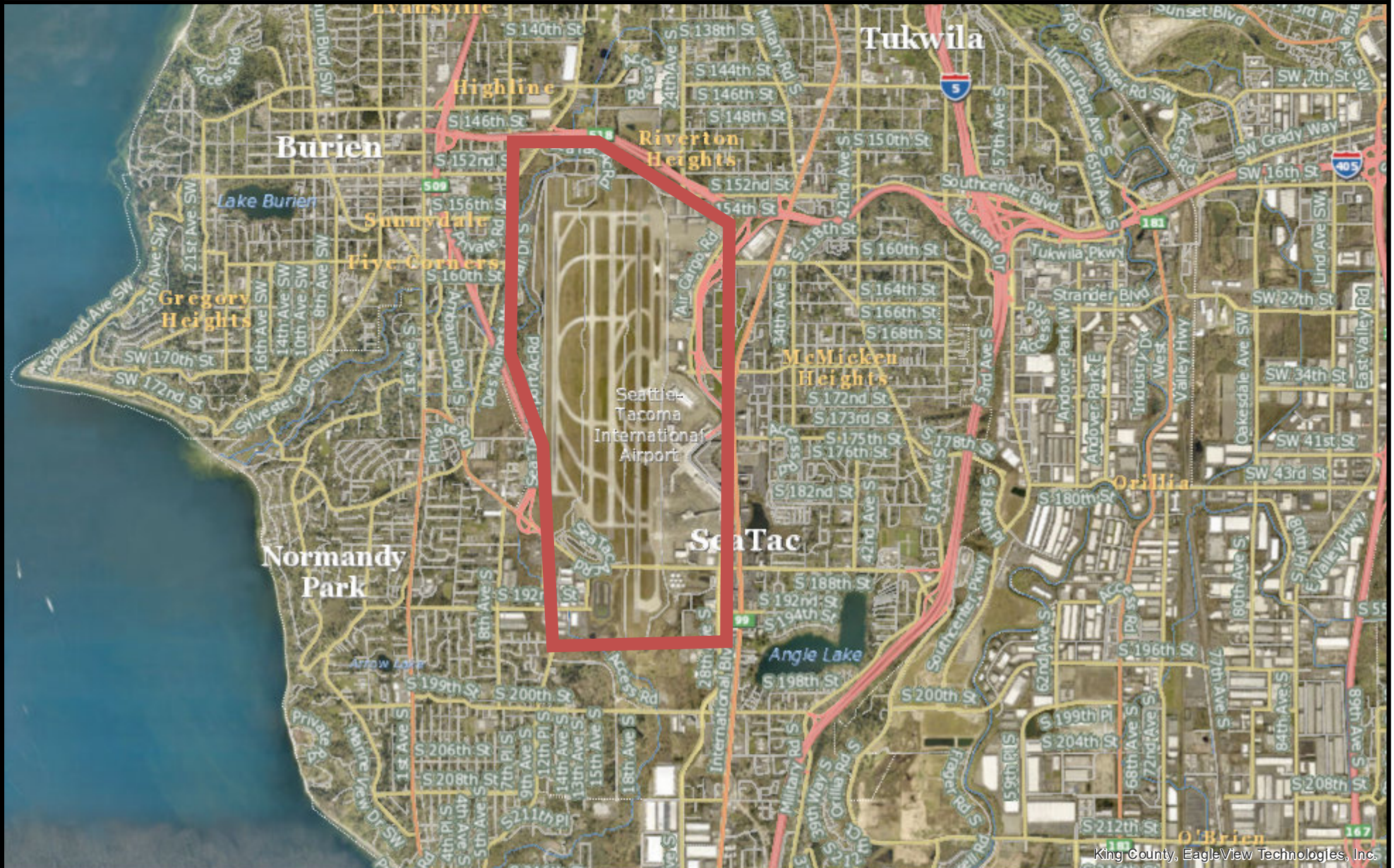


# SeaTac Airport Location



The information included on this map has been compiled by King County staff from a variety of sources and is subject to change without notice. King County makes no representations or warranties, express or implied, as to accuracy, completeness, timeliness, or rights to the use of such information. This document is not intended for use as a survey product. King County shall not be liable for any general, special, indirect, incidental, or consequential damages including, but not limited to, lost revenues or lost profits resulting from the use or misuse of the information contained on this map. Any sale of this map or information on this map is prohibited except by written permission of King County.

Date: 6/11/2024

Notes:



King County





Legend  
 — Stream  
 Potential PFAS Source



FIGURE 2  
 Areas of Known or Suspected Aqueous Film-Forming Foam (AFFF) Use and Release

SEPTEMBER 2023

HALEY  
 ALDRICH

**Table 1. Maximum PFAS Soil Concentrations at SeaTac Airport**

	Vadose Soil Leaching CUL (ug/kg)	Fire Station Area			Fire Training Area			Industrial Wastewater System Area			Fuel Farm Area		
		Conc. (ug/kg)	Location	Depth (ft bgs)	Conc. (ug/kg)	Location	Depth (ft bgs)	Conc. (ug/kg)	Location	Depth (ft bgs)	Conc. (ug/kg)	Location	Depth (ft bgs)
PFHxS	0.41	17	MW-02	10-11	0.87	FTP-11	1.5	0.09 J	IWS-01	1	nd		
PFNA	0.080	320	MW-02	2-3	8.2	FTP-11	1.5	2.6	IWS-07	1.5	0.17 J	FF-02	2
PFOS	0.17	210	DU1	0.5-1	3.8	FTP-09	1.5	0.64	IWS-01	1	nd		
PFOA	0.063	53	MW-02	10-11	0.43	FTP-11	1.5	2.3	IWS-06	1.2	0.36	FF-02	2

bgs - below ground surface

CUL - cleanup level

J - estimated concentration

nd - not detected

PFHxS - perfluorohexane sulfonate

PFNA - perfluorononoate

PFOA - perfluorooctanoate

PFOS - perfluorooctane sulfonate

S - saturated zone

V - vadose zone

Concentration exceeds CUL

**Table 2. Maximum PFAS Groundwater Concentrations at SeaTac Airport**

	Groundwater CUL (ng/L)	Fire Station Area			Fuel Farm Area		
		Conc. (ng/L)	Location	Date	Conc. (ng/L)	Location	Date
PFHxS	65	150 a	MW-02	12/14/22	29	TF-MW-02	4/20/23
PFNA	9	7,800 D,a	MW-02	4/27/21	56	TF-MW-06-D	4/20/23
PFOS	15	135 a	MW-02	5/4/22	130	TF-MW-02	11/19/21, 12/13/22, 4/20/23
PFOA	10	225 a	MW-02	5/4/22	2,800	LAI-4	10/11/21

a - reported concentration is an average of duplicate samples

CUL - cleanup level

D - sample was diluted before analysis

J - estimated concentration

PFHxS - perfluorohexane sulfonate

PFNA - perfluorononoate

PFOA - perfluorooctanoate

PFOS - perfluorooctane sulfonate

Concentration exceeds CUL