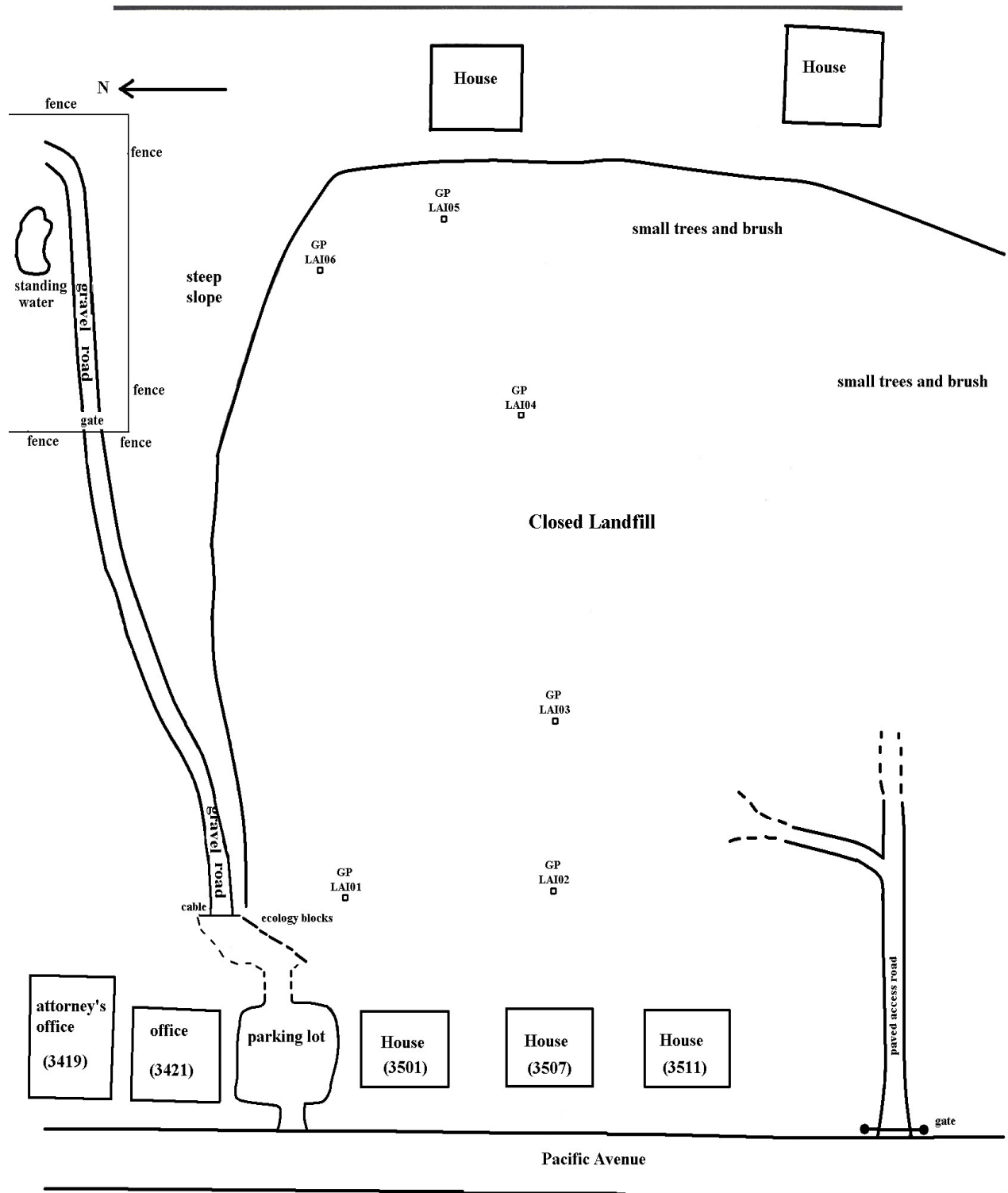


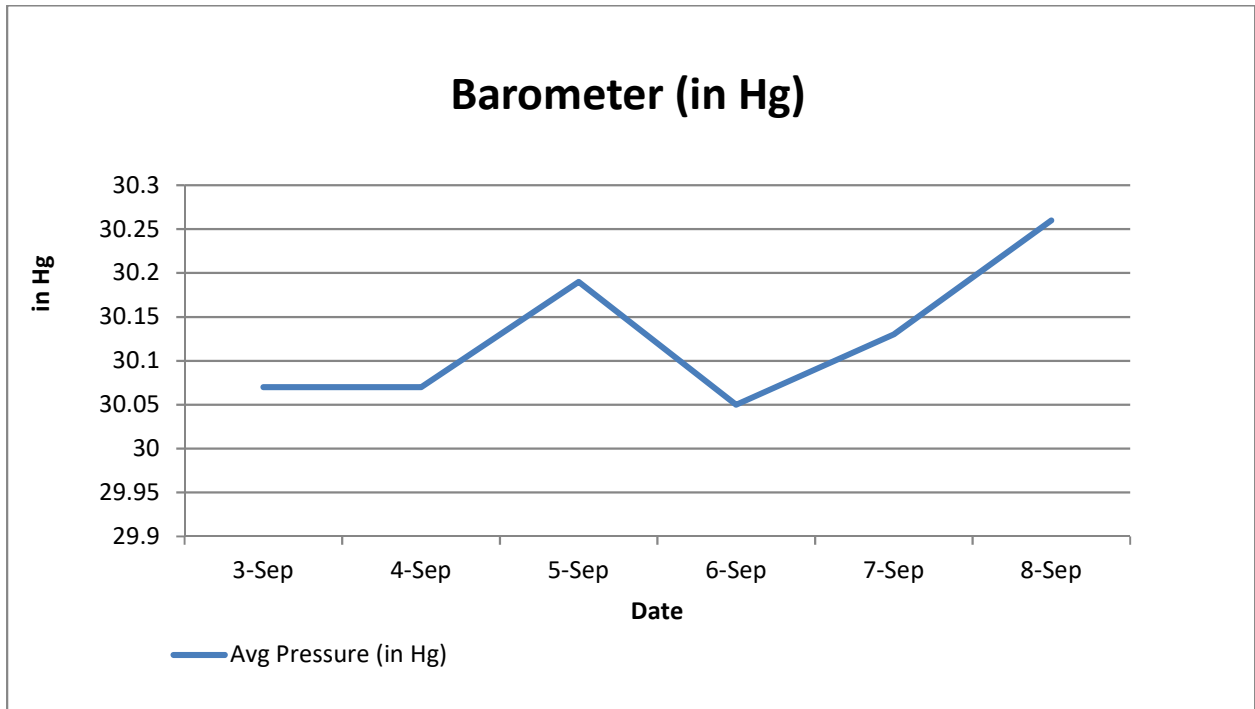
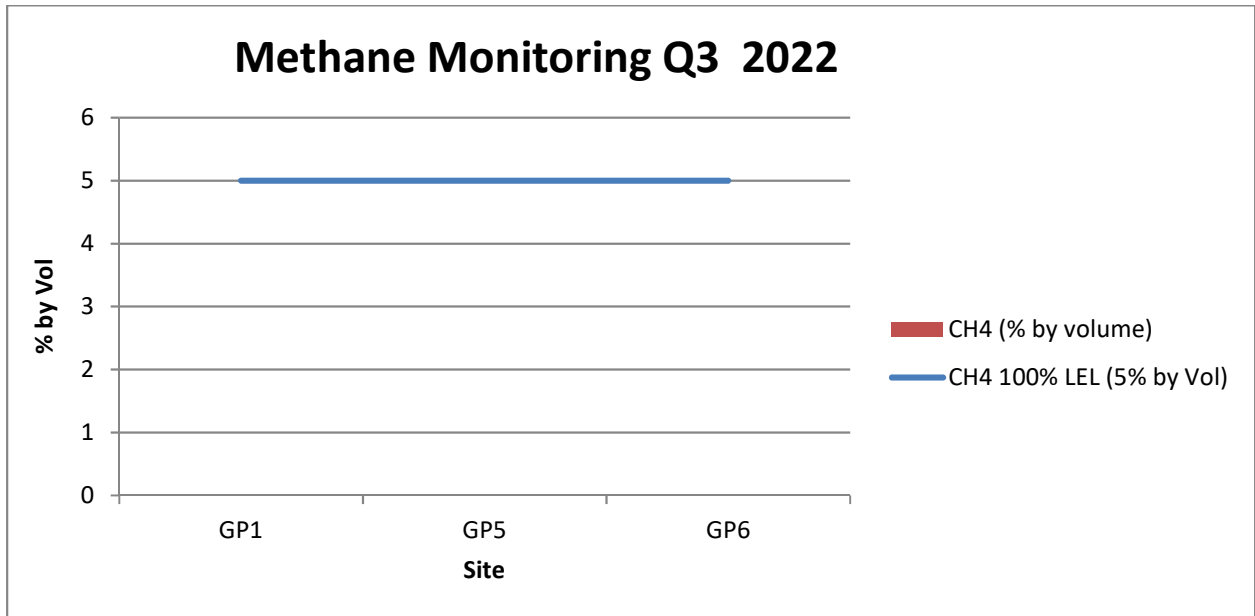
# Inspection Report

<b>Facility Name:</b> City Fill Closed Landfill	<b>Inspector:</b> Quyên Keeton & Else Mosier	<b>Inspection Date:</b> September 08, 2022 Thursday a.m.
<b>Address:</b> 35 <sup>th</sup> and Pacific Ave	<b>City:</b> Tacoma	<b>ZIP Code:</b> 98418
<b>Facility Contact:</b> Hines, Jennifer - JHines@cityoftacoma.org Griffith, Lewis - LGriffit@cityoftacoma.org Sinthavong, Phet - psinthavong@cityoftacoma.org	<b>Phone:</b>	<b>Permit Number:</b> Closed
<p>We conducted an inspection and performed methane monitoring at City Fill closed landfill. Weather conditions were sunny, light wind from the northeast, and a temperature of 61°F.</p> <p>We performed landfill gas monitoring using a Landtec GEM 5000 gas analyzer. We took readings from 3 of the 6 gas probes at the site. We were unable to access the gas probe 2, 3, and 4 due to an aggressive loose dog from the homeless camp barking at us. We had to leave the field. We did not detect methane gas in any of the 3 locations. Some locations have shown elevated levels over the past several monitoring events. Oxygen concentrations were below 20.9% for all 3 locations. Hydrogen sulfide gas was detected in 2 of the 3 locations but at low levels.</p> <p>People are living homeless on the closed landfill. There were couple tents in the middle of the closed landfill around probe 2 and 3. Majority of the tents were on the south side of the property.</p> <p>We were unable to observe any differential settlement because the site was overgrown with vegetation. We did not inspect the face of the landfill for seepage.</p> <p>City of Tacoma has transferred the ownership of this closed landfill to Tacoma Community Redevelopment Authority (TCRA). TCRA is going to redevelop the property for residential housing. TCRA has awarded the redevelopment project to Mercy Housing North West. City of Tacoma and TCRA will update Health Department on this process.</p> <p>Residential and commercial structures are in the vicinity of the landfill. The Health Department recommends monitoring methane concentrations at the property boundary by making boreholes to a depth of 36".</p> <p>See the attached map, graphs and methane field data sheet for details of the methane monitoring survey.</p>		



**City Fill Closed Landfill**

# Inspection Report



SOLID WASTE INSPECTION PROGRAM							
Facility Name: City Fill CLF			Permit #: Closed		Address: 35 <sup>th</sup> and Pacific Ave		
Date: <u>09/08/2022</u> Technician: <u>Q. Keeton &amp; E. Mosier</u>			Barometric Pressure Start: <u>30.24 inHg</u> Instrument I.D. Number: <u>Landtec GEM 5000</u>				
			Barometric Pressure End: <u>30.24 inHg</u>				
UNIT NAME/PROBE#	TIME	%CH <sub>4</sub>	%LEL	CH <sub>4</sub> PPM	%O <sub>2</sub>	H <sub>2</sub> S PPM	LOCATION DESCRIPTION/COMMENTS
CFCLF001	9/8/2022 9:19	0	0	0	4.4	0	
CFCLF002	n/a	n/a	n/a	n/a	n/a	n/a	Unable to access due to an aggressive loose dog
CFCLF003	n/a	n/a	n/a	n/a	n/a	n/a	Unable to access due to an aggressive loose dog
CFCLF004	n/a	n/a	n/a	n/a	n/a	n/a	Unable to access due to an aggressive loose dog
CFCLF005	9/8/2022 9:35	0	0	0	15.2	1	Valve was opened
CFCLF006	9/8/2022 9:42	0	0	0	17.2	1	Valve was opened