



Geotechnical Engineering
Environmental Engineering
Construction Material Testing
Subsurface Exploration
Special Inspection

Proudly serving the Inland Northwest for since 1976

Phil Nollmeyer
Lincoln County
27234 SR 25N
Davenport, WA 99122

April 24, 2018

Project Number X09032

PROJECT: South Wilbur Petroleum Site
Wilbur, WA

SUBJECT: Results of Groundwater Monitoring for 2018

Dear Mr. Nollmeyer,

This report presents the results of annual groundwater sampling and chemical analysis. A site plan, laboratory summaries and laboratory reports with QA/QC data & Chain of Custody are attached to this report.

We collected water samples from the monitoring wells on March 14, 2018. The groundwater levels were slightly lower (approximately 0.5 feet on average) than the previous year's round of sampling. Groundwater contours are presented in Figure 1. Per 2016 direction from the Washington State Department of Ecology, MW-7, MW-8, MW-11 and MW-12 are no longer being monitored.

Field parameters were monitored while purging the wells and recorded upon stabilization. The water samples were placed in appropriate containers provided by the laboratory and transported on ice under Chain of Custody to Anatek Labs in Spokane, Washington.

We requested that Anatek Labs analyze the samples for gasoline, diesel and oil range petroleum hydrocarbons, MTBE and BTEX (Benzene, Toluene, Ethyl-benzene and Xylene) as agreed upon by the WSDOE for a more limited monitoring scope. MTBE was not detected in the monitoring wells. A summary of the analysis is provided below:

- MW-1: Gasoline range petroleum hydrocarbons were not detected at levels greater than 10 ppm. Diesel and heavy oil range petroleum hydrocarbons were not detected. The BTEX levels remain below clean-up levels.
- MW-2: Gasoline range petroleum hydrocarbons and BTEX levels remain low. Diesel range and heavy oil range petroleum hydrocarbons were not detected.
- MW-3: Gasoline range petroleum hydrocarbons concentrations were higher than the previous year. BTEX concentrations were detected at very low levels. Diesel range/heavy oil range petroleum hydrocarbons were not detected.

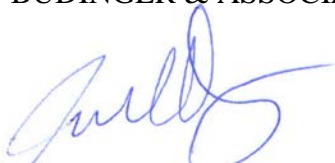
1101 North Fancher Rd.
Spokane Valley, WA 99212
Tel: 509.535.8841
Fax: 509.535.9589

www.budingerinc.com

- MW-4: Gasoline range petroleum hydrocarbons, Benzene, and Ethyl-benzene showed an increase from the previous year. Benzene increased 5-fold. Xylenes, diesel range and heavy oil range petroleum hydrocarbons were not detected.
- MW-6: Gasoline-range petroleum hydrocarbons were present at high concentrations which is similar to previous sampling events. Benzene and Ethyl-benzene concentrations were also elevated; doubled and tripled, respectively. Diesel range and heavy oil range petroleum hydrocarbons were not detected.
- MW-9: Petroleum constituents were not detected. MW-9 has historically been free of contamination and is used mainly as a background monitoring well.
- MW-10: This monitoring well did not have significant changes since this time last year although, gasoline range petroleum hydrocarbons increased from 7.2 to 10.2 ppm. Diesel range and heavy oil range petroleum hydrocarbons were not detected.

The results of sampling from March 2018 have been submitted into the Washington Department of Ecology's EIM system. If you have any questions regarding this report, please feel free to call.

Respectfully Submitted:
BUDINGER & ASSOCIATES

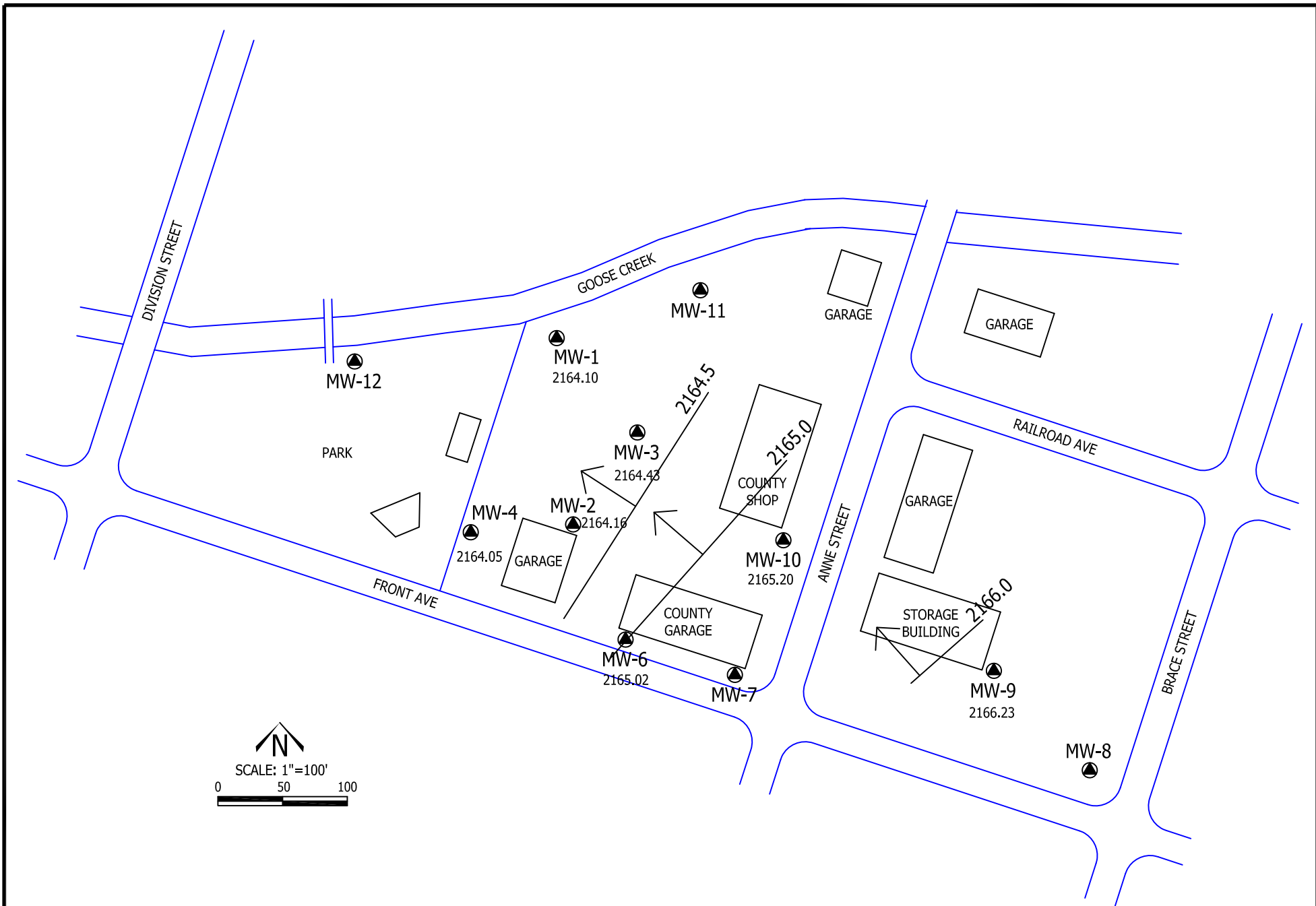


Jason D. Pritzl
Environmental Geologist



Stephen D. Burchett, PE
Environmental Engineer

Attachments:
Site Plan with Groundwater Elevations
Summary of Physical Water Quality Results
Summary of Petroleum Results
Laboratory Summaries & Excel database
Laboratory Reports with QA/QC data & Chain of Custody



2018 Water Levels and Generalized Contours



Budinger & Associates

GROUNDWATER ELEVATION MAP

SOUTH WILBUR PETROLEUM SITE
WILBUR, WASHINGTON

Figure 1

PROJECT NUMBER X09032

DATE: 3/2018

Table 4
Summary of Petroleum Results

Well Number	Date Sampled	GRPH (µg/L)	Benzene (µg/L)	Toluene (µg/L)	Ethyl-benzene (µg/L)	Total Xylenes (µg/L)	DRPH (µg/L)	ORPH (µg/L)
Cleanup Level		800	5.00	1000	700	1000	500	500
MW-1	12/1/04	314	<0.5	<2.0	2.52	<1.5	<250	<500
	4/29/05	302	<0.5	<2.0	<1.0	<1.5	<250	<500
NT-Dry	8/10/05	NT	NT	NT	NT	NT	NT	NT
	12/19/05	<100	<0.5	<2.0	<1.0	<1.5	<250	<500
	4/27/06	6000	120	29.5	141	211	901	<500
	9/29/06	963	16.2	<2.0	29.2	6.56	349	<500
	12/19/06	478	2.81	<2.0	8.02	3.29	<250	<500
	3/19/07	150000	2170	615	3860	4720	1000	<500
	6/26/07	819	27.6	<2.0	31.2	13.0	<250	<500
	11/2/07	333	<0.5	<2.0	2.44	3.46	<250	<500
	3/27/08	1140	12.9	2.30	31.8	11.3	650	<500
	Duplicate	1430	14.8	2.73	34.2	30.9	680	<500
	6/4/08	1240	19.7	3.77	25.0	8.63	921	<472
NT-Dry	9/12/08	NT	NT	NT	NT	NT	NT	NT
	12/3/08	132	<0.5	<2.0	<1.0	<1.5	<236	<472
	3/25/09	<500	<1.0	<1.0	1.3	<2.0	<100	<500
	6/26/09	<500	<1.0	<1.0	<1.0	<2.0	<100	<500
	9/29/09	535	<1.0	<1.0	<1.0	<2.0	164	<500
	12/10/09	<500	<1.0	<1.0	<1.0	<2.0	<100	<500
	3/24/10	301	<1.0	<1.0	<1.0	1.25	119	<500
	6/17/10	<100	<1.0	<1.0	<1.0	<2.0	<100	<500
	9/14/10	314	<1.0	<1.0	2.14	1.89	<100	<500
	12/7/10	<100	<1.0	<1.0	<1.0	<2.0	<100	<500
	3/24/11	483	<1.0	1.16	6.20	4.89	161	<500
	6/21/11	1320	8.23	2.42	24.8	16.5	182	<500
	11/22/11	176	<1.0	<1.0	<1.0	<2.0	<100	<500
	12/28/11	185	<1.0	<1.0	<1.0	<2.0	<100	<500
	3/16/12	167	<1.0	<1.0	<1.0	<3.0	<1.0	<500
	6/28/12	268	<1.0	<1.0	<1.0	<3.0	<0.1	<500
NT-Dry	9/28/12	NT	NT	NT	NT	NT	NT	NT
	1/10/13	<100	<1.0	<1.0	<1.0	<3.0	<100	<500
	4/1/13	128	<1.0	1.11	<1.0	<3.0	<100	<500
	6/12/13	<100	<1.0	<1.0	<1.0	<2.0	<100	<500
	10/16/13	NT	<1.0	<1.0	<1.0	<1.0	<100	<500
	12/17/13	<100	<0.5	<0.5	<0.5	<1.5	<100	<500
	Duplicate	<100	<0.5	<0.5	<0.5	<1.5	<100	<500
	3/18/14	1930	<0.5	<0.5	<0.5	<1.5	<100	<500
	6/4/14	195	<0.5	<0.5	<0.5	<1.0	<100	<500
NT-Dry	9/22/14	NT	NT	NT	NT	NT	NT	NT
	12/3/14	126	<0.5	<0.5	<0.5	<1.0	<100	<500
	3/18/15	2230	0.95	1.38	26.2	29.04	<100	<500
	6/9/15	1030	2.4	<0.5	12.6	4.9	<100	<500
	4/16/16	8220	15.0	4.5	101.0	94.5	<100	<500
	4/19/17	7580	5.4	2.9	77.0	55.0	<100	<500
	3/14/18	6890	< 100	<100	<100	<200	<100	<500

Table 4
Summary of Petroleum Results

Well Number	Date Sampled	GRPH (µg/L)	Benzene (µg/L)	Toluene (µg/L)	Ethyl-benzene (µg/L)	Total Xylenes (µg/L)	DRPH (µg/L)	ORPH (µg/L)
Cleanup Level		800	5.00	1000	700	1000	500	500
MW-2	12/1/04	14700	1700	490	1220	1920	1630	<500
	4/29/05	18200	1190	<100	1170	1300	3400	<500
NT-Dry	8/10/05	NT	NT	NT	NT	NT	NT	NT
	12/19/05	11700	1790	421	262	1740	5330	<500
	4/29/06	20400	1380	313	1330	1930	1900	<500
	12/19/06	15000	645	213	1020	1420	5290	539
	3/19/07	15800	861	153	969	1250	4730	1000
	6/26/07	21800	2320	709	1690	2710	4020	<500
	3/28/08	10900	672	128	690	938	4630	<500
NT-Dry	12/3/08	NT	NT	NT	NT	NT	NT	NT
	3/28/09	14200	570	101	717	913	2500	<500
NT-Dry	6/26/09	NT	NT	NT	NT	NT	NT	NT
NT-Dry	9/29/09	NT	NT	NT	NT	NT	NT	NT
	12/10/09	16700	1210	287	1050	1260	<100	<500
	3/24/10	14500	649	102	828	709	3540	<500
	6/16/10	16100	1050	241	1090	1435	823	<500
NT-Dry	9/14/10	NT	NT	NT	NT	NT	NT	NT
	12/8/10	21600	1150	167	1680	2154	<100	1340
	3/23/11	5510	353	68.6	570	488	881	706
	Duplicate	5750	379	74.0	568	530	1690	702
	6/22/11	8130	382	72.6	729	626	616	<500
	11/22/11	1730	73.0	17.0	111	140	<100	<500
	12/28/11	10400	335	52.0	579	514	<100	<500
	3/16/12	13600	587	118	988	1192	408	<500
	6/28/12	13000	413	85.2	712	859	<100	<500
NT-Dry	9/28/12	NT	NT	NT	NT	NT	NT	NT
	1/10/13	19000	572	185	1130	1452	<100	200
	4/2/13	7580	299	50.6	576	526	<100	<500
	6/12/13	15300	560	118	959	1193	428	<500
NT-Dry	10/16/13	NT	NT	NT	NT	NT	NT	NT
	12/17/13	7040	412	94.6	754	1000	4230	676
	3/18/14	8610	272	<25	390	664	634	<500
	6/4/14	3000	176	25.8	59.7	272	<100	<500
NT-Dry	9/22/14	NT	NT	NT	NT	NT	NT	NT
NT-Dry	12/3/14	NT	NT	NT	NT	NT	NT	NT
	12/22/14	9850	189	34.4	316	573	<100	<500
	3/18/15	612	24	2.52	10.6	46.74	857	<500
	6/9/15	1380	100	<10.0	22	104	<100	<500
	4/13/16	500	26	1.5	11	24	<100	<500
	4/19/17	102	6	<1.0	4	5	<100	<500
	3/14/18	340	22.8	2.31	12.5	16.5	<100	<500

Table 4
Summary of Petroleum Results

Well Number	Date Sampled	GRPH (µg/L)	Benzene (µg/L)	Toluene (µg/L)	Ethyl-benzene (µg/L)	Total Xylenes (µg/L)	DRPH (µg/L)	ORPH (µg/L)
Cleanup Level		800	5.00	1000	700	1000	500	500
MW-3	12/1/04	1540	6.1	<2.0	7.90	10.5	1240	<500
	4/29/05	4160	88.3	17.7	94.6	141	1760	1010
NT-Dry	8/10/05	NT	NT	NT	NT	NT	NT	NT
	12/19/05	7780	142	23.9	127	368	2360	546
	4/27/06	1290	14.8	3.6	13.7	27.6	329	<500
	12/19/06	5350	109	40.8	201	273	2130	<500
	3/19/07	6670	116	43.1	292	410	2420	502
	3/28/08	2840	47.9	<10.0	140	196	1810	<500
	6/4/08	2970	33.0	<20	152	212	3180	<472
NT-Dry	9/12/08	NT	NT	NT	NT	NT	NT	NT
NT-Dry	12/3/08	NT	NT	NT	NT	NT	NT	NT
	3/25/09	2630	79.2	20.9	164	230	471	<500
NT-Dry	6/26/09	NT	NT	NT	NT	NT	NT	NT
NT-Dry	9/29/09	NT	NT	NT	NT	NT	NT	NT
	12/11/09	7550	87.0	42.5	298	429	3370	<500
	3/25/10	4600	86.6	31.8	278	376	1270	<500
	Duplicate	4880	86.3	32.3	286	393	1330	<500
	6/16/10	3090	29.0	14.9	133	184	454	<500
	Duplicate	3510	25.4	11.1	136	188	460	<500
NT-Dry	9/14/10	NT	NT	NT	NT	NT	NT	NT
	12/8/10	5490	109	23.3	278	391	<100	<500
	Duplicate	8820	168	39.0	447	634	<100	<500
	3/24/11	3600	67.3	14.8	184	270	1210	658
	6/21/11	3980	18.6	7.92	185	266	581	<500
	11/22/11	6030	70.0	18.0	291	379	<100	2940
	12/28/11	8380	142	37.1	468	583	<100	<500
	3/16/12	3500	29.9	8.86	153	176	855	<500
	6/28/12	4000	41.2	9.17	163	152	339	<500
NT-Dry	9/28/12	NT	NT	NT	NT	NT	NT	NT
	1/10/13	7000	116	30.4	369	323	<100	1000
	4/2/13	4250	41.7	10.9	174	107	<100	<500
	6/12/13	5280	37.2	<10	234	96.4	221	<500
NT-Dry	10/16/13	NT	NT	NT	NT	NT	NT	NT
NT-Dry	12/17/13	NT	NT	NT	NT	NT	NT	NT
	3/17/14	3470	28.1	5.38	134	55.0	646	<500
	6/4/14	6740	29.7	<12.5	263	44.4	<100	<500
NT-Dry	9/22/14	NT	NT	NT	NT	NT	NT	NT
NT-Dry	12/3/14	NT	NT	NT	NT	NT	NT	NT
	12/22/14	2960	18.2	<5.0	44.5	33.6	<100	<500
	3/18/15	2540	17.3	4.23	85.0	33.1	504	<500
NT-Dry	6/9/15	NT	NT	NT	NT	NT	NT	NT
	4/13/16	2030	<2.5	<2.5	16.1	9.3	<100	<500
	4/19/17	518	<1.0	<1.0	1.1	<3.0	<100	<500
	3/14/18	926	1.27	1.16	3.27	1.18	<100	<500

Table 4
Summary of Petroleum Results

Well Number	Date Sampled	GRPH (µg/L)	Benzene (µg/L)	Toluene (µg/L)	Ethyl-benzene (µg/L)	Total Xylenes (µg/L)	DRPH (µg/L)	ORPH (µg/L)
Cleanup Level		800	5.00	1000	700	1000	500	500
MW-4	12/1/04	1350	17.8	2.28	50.0	98.2	2150	<500
	4/29/05	10200	72.1	<10	219	414	1980	<500
NT-Dry	8/10/05	NT	NT	NT	NT	NT	NT	NT
	12/19/05	11000	98.6	<10.0	179	887	9150	<500
	4/27/06	633	4.71	<2.0	18.2	38.7	260	<500
	9/29/06	14000	70.5	11.6	453	917	411	<500
	12/19/06	9770	38.5	20.1	205	411	3840	<500
	3/19/07	7140	39.5	5.00	182	427	2690	821
	6/26/07	17200	143	46.2	602	1210	4570	<500
NT-Dry	11/2/07	NT	NT	NT	NT	NT	NT	NT
	3/27/08	6850	69.0	<10	251	548	2540	<500
	6/4/08	13200	59.5	18.1	262	540	3070	<472
NT-Dry	9/12/08	NT	NT	NT	NT	NT	NT	NT
	12/3/08	19100	94.6	11.5	423	857	5300	<472
	Duplicate	17700	90.0	11.8	380	770	5320	<472
	3/25/09	981	3.48	1.41	28.2	57.5	280	<500
	6/26/09	19800	132	31.0	545	1050	5890	<500
NT-Dry	9/29/09	NT	NT	NT	NT	NT	NT	NT
	12/10/09	22100	40.3	19.8	390	730	<100	<500
	3/24/10	7560	14.0	6.05	172	341	1990	<500
	6/16/10	11000	23.5	9.11	210	419	1090	<500
NT-Dry	9/14/10	NT	NT	NT	NT	NT	NT	NT
	12/7/10	4470	<5.0	6.15	24.8	81.5	2620	<500
	3/24/11	3250	9.48	3.04	83.7	158	158	597
	6/22/11	4700	35.4	4.87	114	220	552	<500
	11/22/11	1430	55.3	23.0	286	578	<100	<500
	12/28/11	17300	62.4	11.5	318	638	<100	<500
	3/16/12	<100	<10	<10	<10	<30	<100	<500
	3/16/12	<100	<10	<10	<10	<30	<100	<500
	4/19/12	<100	<1.0	<1.0	<1.0	<2.0	<100	<100
	6/28/12	4000	12.8	3.02	91.0	144	<100	<500
NT-Dry	9/28/12	NT	NT	NT	NT	NT	NT	NT
	1/10/13	202	<1.0	<1.0	1.19	2.31	<100	<500
	4/2/13	2050	6.16	2.58	55.4	56.2	<100	<500
	6/12/13	5360	19.3	2.66	136	130	371	<500
NT-Dry	10/16/13	NT	NT	NT	NT	NT	NT	NT
	12/17/13	7670	24.4	5.37	259	148	4270	583
	3/18/14	1400	5.20	0.97	48.9	8.80	<100	<500
	6/4/14	9840	23.1	5.37	271	32.5	<100	<500
NT-Dry	9/22/14	NT	NT	NT	NT	NT	NT	NT
NT-Dry	12/3/14	NT	NT	NT	NT	NT	NT	NT
	12/22/14	3350	5.21	<5.0	61.6	<10	<100	<500
	3/18/15	4430	8.0	3.32	72.7	11.38	664	<500
	6/9/15	16400	22.9	<10.0	252.0	<31.0	<100	<500
	4/13/16	2250	4.2	<2.5	63.9	<7.5	<100	<500
	4/19/17	10400	26.3	5	181.0	14	<100	<500
	3/14/18	17300	137	<100	506.0	<200	<100	<500

Table 4
Summary of Petroleum Results

Well Number	Date Sampled	GRPH (µg/L)	Benzene (µg/L)	Toluene (µg/L)	Ethyl-benzene (µg/L)	Total Xylenes (µg/L)	DRPH (µg/L)	ORPH (µg/L)
Cleanup Level		800	5.00	1000	700	1000	500	500
MW-6	12/1/04	17700	389	304	538	911	2130	949
	4/29/05	25300	2100	1260	763	1210	14400	2430
NT-Dry	8/10/05	NT	NT	NT	NT	NT	NT	NT
	12/19/05	<100	<0.5	<2.0	<1.0	<1.5	7230	514
	4/27/06	15200	759	384	852	1320	2090	<500
NT-Dry	9/29/06	NT	NT	NT	NT	NT	NT	NT
	12/19/06	19300	967	462	1260	1860	4540	566
	3/19/07	15000	954	278	791	1160	15200	563
	6/26/07	13400	659	296	781	1180	3800	<500
	12/13/07	22000	730	290	940	1310	4700	<500
	3/27/08	12600	538	251	682	1130	4190	<500
	6/4/08	16900	459	232	689	1050	3910	<472
	3/28/09	18500	816	120	1040	1440	2500	<500
	Duplicate	19000	836	329	1060	1472	3400	<500
	6/26/09	21000	995	418	1240	1540	5730	<500
NT-Dry	9/29/09	NT	NT	NT	NT	NT	NT	NT
	12/10/09	23900	1080	451	1300	1610	<100	<500
	3/24/10	21100	961	440	1370	1837	4610	<500
	6/16/10	21400	937	406	1230	1704	1030	<500
NT-Dry	9/14/10	NT	NT	NT	NT	NT	NT	NT
	12/7/10	23300	803	260	1490	1963	<100	<500
	3/25/11	22700	848	405	1510	1984	1710	629
	6/22/11	22200	701	306	1350	1785	541	<500
	Duplicate	21800	706	306	1330	1764	755	<500
	11/22/11	24000	538	290	1320	1786	<100	<500
	12/28/11	22500	832	322	1240	1671	<100	<500
	3/16/12	19900	549	224	1160	1493	100	<500
	6/28/12	24600	711	313	1400	1816	<100	<500
NT-Dry	9/28/12	NT	NT	NT	NT	NT	NT	NT
	1/10/13	24000	408	209	1220	1570	<100	<500
	4/2/13	23900	614	223	1210	1587	831	<500
	6/12/13	21900	515	210	1120	1467	736	<500
	Duplicate	19800	333	148	949	1271	703	<500
NT-Dry	10/16/13	NT	NT	NT	NT	NT	NT	NT
	12/17/13	21700	253	106	1000	1218	3630	<500
	3/18/14	23600	541	145	402	1845	<100	<500
	6/4/14	21800	298	91	541	1350	<100	<500
NT-Dry	9/22/14	NT	NT	NT	NT	NT	NT	NT
	12/3/14	17300	121	62.8	255	960	<100	<500
	3/18/15	20500	330	160	292	1093	<100	<500
	6/9/15	14100	278	64.9	84	532	<100	<500
	2/16/16	14300	180	19.9	70	663	NT	NT
	4/13/16	9150	136	14.5	18	723	<100	<500
Duplicate (MW673)	4/13/16	13400	133	<25	<25	591	<100	<500
	4/19/17	5480	93	14.7	81	387	<100	<500
	3/14/18	16100	229	<100	257	229	<100	<500

Table 4
Summary of Petroleum Results

Well Number	Date Sampled	GRPH (µg/L)	Benzene (µg/L)	Toluene (µg/L)	Ethyl-benzene (µg/L)	Total Xylenes (µg/L)	DRPH (µg/L)	ORPH (µg/L)
Cleanup Level		800	5.00	1000	700	1000	500	500
MW-7	12/1/04	133	8.79	9.50	3.65	9.47	<250	<500
	4/29/05	<100	3.99	2.27	<1.0	0.75	<250	<500
NT-Dry	8/10/05	NT	NT	NT	NT	NT	NT	NT
	12/19/05	<100	<0.5	<2.0	<1.0	0.75	<250	<500
	4/27/06	<100	<0.5	<2.0	<1.0	0.75	<250	<500
NT-Dry	9/29/06	NT	NT	NT	NT	NT	NT	NT
	12/14/06	<100	<0.5	<2.0	<1.0	0.75	2420	8380
	3/19/07	ND	ND	ND	ND	ND	<250	<500
	6/26/07	<100	<0.5	<2.0	<1.0	0.75	<250	<500
NT-Dry	9/27/07	NT	NT	NT	NT	NT	NT	NT
NT-Dry	11/2/07	NT	NT	NT	NT	NT	NT	NT
	4/29/05	NT	NT	NT	NT	NT	NT	NT
	8/10/05	NT	NT	NT	NT	NT	NT	NT
	12/19/05	NT	NT	NT	NT	NT	NT	NT
	4/27/06	<100	<0.5	<2.0	<1.0	<1.5	<250	<500
	9/29/06	NT	NT	NT	NT	NT	NT	NT
	12/14/06	NT	NT	NT	NT	NT	NT	NT
	3/19/07	NT	NT	NT	NT	NT	NT	NT
	6/26/07	NT	NT	NT	NT	NT	NT	NT
	9/27/07	NT	NT	NT	NT	NT	NT	NT
	11/2/07	NT	NT	NT	NT	NT	NT	NT
	12/13/07	NT	NT	NT	NT	NT	NT	NT
	3/27/08	50.0	0.25	1.00	0.50	0.75	125	250
	3/27/08	<100	<0.5	<2.0	<1.0	<1.5	<250	<500
	6/4/08	<100	<0.5	<2.0	<1.0	0.75	274	<472
	Duplicate	<100	<0.5	<2.0	<1.0	<1.5	<236	<472
NT-Dry	9/12/08	NT	NT	NT	NT	NT	NT	NT
	12/3/08	<100	<0.5	<2.0	<1.0	0.75	<236	<472
	3/28/09	<500	2.39	1.86	9.26	14.3	<100	<500
	6/26/09	951	8.43	7.34	36.0	54.6	<100	<500
NT-Dry	9/29/09	NT	NT	NT	NT	NT	NT	NT
	12/11/09	<500	<1.0	<1.0	<1.0	<2.0	<100	<500
	Duplicate	<500	<1.0	<1.0	<1.0	<2.0	<100	<500
	3/24/10	<250	<1.0	<1.0	2.14	2.53	<100	<500
	6/16/10	<100	<1.0	<1.0	<1.0	<2.0	<100	<500
NT-Dry	9/14/10	NT	NT	NT	NT	NT	NT	NT
	12/8/10	<100	<1.0	<1.0	<1.0	<2.0	<100	648
	3/25/11	<100	<1.0	<1.0	<1.0	<2.0	160	671
	6/22/11	<100	<1.0	<1.0	<1.0	<2.0	<100	<500
	11/22/11	<100	<1.0	<1.0	<1.0	<2.0	<100	<500

Table 4
Summary of Petroleum Results

Well Number	Date Sampled	GRPH (µg/L)	Benzene (µg/L)	Toluene (µg/L)	Ethyl-benzene (µg/L)	Total Xylenes (µg/L)	DRPH (µg/L)	ORPH (µg/L)
Cleanup Level		800	5	1000	700	1000	500	500
Well Number	Date Sampled	GRPH (µg/L)	Benzene (µg/L)	Toluene (µg/L)	Ethyl-benzene (µg/L)	Total Xylenes (µg/L)	DRPH (µg/L)	ORPH (µg/L)
Cleanup Level		800	5.00	1000	700	1000	500	500
MW-7 Continued	12/28/11	<100	<1.0	<1.0	<1.0	<2.0	<100	<500
	3/15/12	<100	<10	<10	<10	<30	<100	<500
	4/6/14		<0.5	<0.5	<0.5	<1.0	<100	<500
	6/28/12	<100	<1.0	<1.0	<1.0	<3.0	<100	<500
NT-Dry	9/28/12	NT	NT	NT	NT	NT	NT	NT
	1/10/13	<100	<1.0	<1.0	<1.0	<3.0	<100	<500
	4/1/13	<100	<1.0	<1.0	<1.0	<3.0	<100	<500
	6/12/13	<100	<1.0	<1.0	<1.0	<3.0	<100	<500
NT-Dry	10/16/13	NT	NT	NT	NT	NT	NT	NT
	12/17/13	<100	<0.5	<0.5	<0.5	<1.0	<100	<500
	3/18/14	<100	<0.5	<0.5	<0.5	<1.5	<100	<500
	6/4/14	<100	<0.5	<0.5	<0.5	<1.5	<100	<500
NT-Dry	9/22/14	NT	NT	NT	NT	NT	NT	NT
No DRPH	12/3/14	<100	<0.5	<0.5	<0.5	<1.0	NT	NT
	12/22/14	NT	NT	NT	NT	NT	<100	<500
Duplicate	12/22/14	<100	<0.5	<0.5	<0.5	<1.0	<100	<500
	3/18/15	<100	<0.5	<0.5	<0.5	<1.5	<100	<500
Duplicate	3/18/15	<100	<0.5	<0.5	<0.5	<1.5	<100	<500
	6/9/15	<100	<0.5	<0.5	<0.5	<1.5	<100	<500
	5/9/16	<100	<1.0	<1.0	<1.0	<3.0	<100	<500
	4/19/17	NT	NT	NT	NT	NT	NT	NT

Table 4
Summary of Petroleum Results

Well Number	Date Sampled	GRPH (µg/L)	Benzene (µg/L)	Toluene (µg/L)	Ethyl-benzene (µg/L)	Total Xylenes (µg/L)	DRPH (µg/L)	ORPH (µg/L)
Cleanup Level		800	5.00	1000	700	1000	500	500
MW-8	12/1/04	NT	NT	NT	NT	NT	NT	NT
NT-Dry	4/29/05	NT	NT	NT	NT	NT	NT	NT
NT-Dry	8/10/05	NT	NT	NT	NT	NT	NT	NT
NT-Dry	12/19/05	NT	NT	NT	NT	NT	NT	NT
NT-Dry	4/27/06	NT	NT	NT	NT	NT	NT	NT
NT-Dry	9/29/06	NT	NT	NT	NT	NT	NT	NT
	12/14/06	105	<0.5	<2.0	<1.0	<1.5	<250	<500
NT-Dry	3/19/07	NT	NT	NT	NT	NT	NT	NT
NT-Dry	6/26/07	NT	NT	NT	NT	NT	NT	NT
NT-Dry	9/27/07	NT	NT	NT	NT	NT	NT	NT
NT-Dry	11/2/07	NT	NT	NT	NT	NT	NT	NT
	3/27/08	<100	<0.5	<2.0	<1.0	<1.5	<250	<500
NT-Dry	6/4/08	NT	NT	NT	NT	NT	NT	NT
NT-Dry	9/12/08	NT	NT	NT	NT	NT	NT	NT
NT-Dry	12/3/08	NT	NT	NT	NT	NT	NT	NT
NT-Dry	3/28/09	NT	NT	NT	NT	NT	NT	NT
	3/24/11	<100	<1.0	<1.0	<1.0	<2.0	144	702
	6/21/11	<100	<1.0	<1.0	<1.0	<2.0	<100	<500
NT-Dry	11/22/11	NT	NT	NT	NT	NT	NT	NT
NT-Dry	12/28/11	NT	NT	NT	NT	NT	NT	NT
NT-Dry	3/15/12	NT	NT	NT	NT	NT	NT	NT
NT-Dry	6/28/12	NT	NT	NT	NT	NT	NT	NT
NT-Dry	9/28/12	NT	NT	NT	NT	NT	NT	NT
NT-Dry	1/10/13	NT	NT	NT	NT	NT	NT	NT
NT-Dry	4/1/13	NT	NT	NT	NT	NT	NT	NT
NT-Dry	6/12/13	NT	NT	NT	NT	NT	NT	NT
NT-Dry	10/16/13	NT	NT	NT	NT	NT	NT	NT
NT-Dry	12/17/13	NT	NT	NT	NT	NT	NT	NT
NT-Dry	3/17/14	NT	NT	NT	NT	NT	NT	NT
NT-Dry	6/4/14	NT	NT	NT	NT	NT	NT	NT
NT-Dry	9/22/14	NT	NT	NT	NT	NT	NT	NT
NT-Dry	12/3/14	NT	NT	NT	NT	NT	NT	NT
NT-Dry	3/18/15	NT	NT	NT	NT	NT	NT	NT
NT-Dry	6/9/15	NT	NT	NT	NT	NT	NT	NT
	4/13/16	<100	<0.5	<0.5	<0.5	<1.5	<100	<500
	4/19/17	NT	NT	NT	NT	NT	NT	NT

Table 4
Summary of Petroleum Results

Well Number	Date Sampled	GRPH (µg/L)	Benzene (µg/L)	Toluene (µg/L)	Ethyl-benzene (µg/L)	Total Xylenes (µg/L)	DRPH (µg/L)	ORPH (µg/L)
Cleanup Level		800	5.00	1000	700	1000	500	500
MW-9	12/1/04	NT	NT	NT	NT	NT	NT	NT
	4/29/05	<100	1.06	<2.0	<1.0	<1.5	<250	<500
NT-Dry	8/10/05	NT	NT	NT	NT	NT	NT	NT
NT-Dry	12/19/05	NT	NT	NT	NT	NT	NT	NT
	4/27/06	<100	<0.5	<2.0	<1.0	<1.5	<250	<500
NT-Dry	9/29/06	NT	NT	NT	NT	NT	NT	NT
	12/14/06	<100	<0.5	<2.0	<1.0	<1.5	<250	603
	3/19/07	<100	<0.5	<2.0	<1.0	<1.5	<250	<500
	6/26/07	<100	<0.5	<2.0	<1.0	<1.5	<250	<500
NT-Dry	9/27/07	NT	NT	NT	NT	NT	NT	NT
NT-Dry	11/2/07	NT	NT	NT	NT	NT	NT	NT
	12/13/07	NT	NT	NT	NT	NT	NT	NT
	3/27/08	<100	<0.5	<2.0	<1.0	<1.5	<250	<500
	6/2/08	<100	<0.5	<2.0	<1.0	<1.5	<236	<472
NT-Dry	9/12/08	NT	NT	NT	NT	NT	NT	NT
NT-Dry	12/3/08	NT	NT	NT	NT	NT	NT	NT
	3/25/09	<500	<1.0	<1.0	<1.0	<2.0	<100	<500
	6/26/09	<500	<1.0	<1.0	<1.0	2.27	<100	<500
	Duplicate	<500	<1.0	<1.0	1.6	2.79	<100	<500
NT-Dry	9/29/09	NT	NT	NT	NT	NT	NT	NT
	12/11/09	<500	<1.0	<1.0	<1.0	<2.0	<100	<500
	3/25/10	<250	<1.0	<1.0	<1.0	<2.0	<100	<500
	6/16/10	<100	<1.0	<1.0	<1.0	<2.0	<100	<500
NT-Dry	9/14/10	NT	NT	NT	NT	NT	NT	NT
	12/7/10	<100	<1.0	<1.0	<1.0	<2.0	<100	<500
	3/24/11	<100	<1.0	<1.0	<1.0	<2.0	<100	<500
	6/21/11	<100	<1.0	<1.0	<1.0	<2.0	145	<500
NT-Dry	11/22/11	NT	NT	NT	NT	NT	NT	NT
NT-Dry	12/28/11	NT	NT	NT	NT	NT	NT	NT
	3/15/12	132	<10	<10	<10	-	<100	<500
	6/28/12	<100	<1.0	<1.0	<1.0	<3.0	<100	<500
NT-Dry	9/28/12	NT	NT	NT	NT	NT	NT	NT
NT-Dry	1/10/13	NT	NT	NT	NT	NT	NT	NT
	4/1/13	<100	<1.0	<1.0	<1.0	<3.0	<100	<500
	6/12/13	<100	<1.0	<1.0	<1.0	<3.0	<100	<500
NT-Dry	10/16/13	NT	NT	NT	NT	NT	NT	NT
NT-Dry	12/17/13	NT	NT	NT	NT	NT	NT	NT
	3/18/14	<100	<0.5	<0.5	<0.5	<2.0	<100	<500
	6/4/14	<100	<0.5	<0.5	<0.5	<1.0	<100	<500
NT-Dry	9/22/14	NT	NT	NT	NT	NT	NT	NT
NT-Dry	12/3/14	NT	NT	NT	NT	NT	NT	NT
	12/22/14	<100	<0.5	<0.5	<0.5	<1.0	<100	<500
	3/18/15	<100	<0.5	<0.5	<0.5	<1.5	<100	<500
	6/9/15	<100	<0.5	<0.5	<0.5	<1.5	<100	<500
	4/13/16	<100	<0.5	<0.5	<0.5	<1.5	<100	<500
	4/19/17	<100	<1.0	<1.0	<1.0	<3.0	<100	<500
	3/14/18	<100	<1.0	<1.0	<1.0	<2.0	<100	<500
(Duplicate)	3/14/18	<100	<1.0	<1.0	<1.0	<2.0	<100	<500

Table 4
Summary of Petroleum Results

Well Number	Date Sampled	GRPH (µg/L)	Benzene (µg/L)	Toluene (µg/L)	Ethyl-benzene (µg/L)	Total Xylenes (µg/L)	DRPH (µg/L)	ORPH (µg/L)
Cleanup Level		800	5.00	1000	700	1000	500	500
MW-10	12/1/04	NT	NT	NT	NT	NT	NT	NT
	4/29/05	5790	20.3	<2.0	16.5	42.3	1690	<500
NT-Dry	8/10/05	NT	NT	NT	NT	NT	NT	NT
	12/19/05	5880	38.6	16.9	35.3	86.3	4150	<500
	4/27/06	6000	43.1	14.5	38.2	114	1080	<500
NT-Dry	9/29/06	NT	NT	NT	NT	NT	NT	NT
	12/19/06	7010	34.2	25.8	30.3	86.2	2920	<500
	3/19/07	6900	37.8	16.8	42.0	139	3500	<500
	6/26/07	3220	14.9	6.39	20.2	57.5	2490	<500
NT-Dry	9/27/07	NT	NT	NT	NT	NT	NT	NT
NT-Dry	11/2/07	NT	NT	NT	NT	NT	NT	NT
	3/28/08	2450	5.57	2.48	4.29	12.0	1550	<500
	6/4/08	2410	8.07	3.90	9.58	23.6	1560	<472
NT-Dry	9/12/08	NT	NT	NT	NT	NT	NT	NT
	12/3/08	6240	19.6	12.6	24.5	61.2	2510	<472
	3/25/09	3370	3.61	17.1	18.6	59.1	533	<500
NT-Dry	6/26/09	NT	NT	NT	NT	NT	NT	NT
NT-Dry	9/29/09	NT	NT	NT	NT	NT	NT	NT
	12/11/09	4540	<1.0	<1.0	23.8	71.2	4100	<500
	3/25/10	5100	2.87	<1.0	30.4	114	1210	<500
	6/16/10	3020	<1.0	<1.0	13.1	35.8	897	<500
NT-Dry	9/14/10	NT	NT	NT	NT	NT	NT	NT
	12/7/10	9090	25.4	7.7	231	486	1720	<500
	3/24/11	3260	<1.0	4.0	21.3	72.8	1540	<500
	6/22/11	2380	<1.0	3.3	10.8	55.0	829	<500
	11/22/11	4000	4.35	5.6	17.8	78.4	1450	<500
	12/28/11	5120	<1.0	6.4	26.6	115	1020	<500
	Duplicate	5300	<1.0	6.3	27.3	116	1070	<500
	3/16/12	3230	<10	3780	10300	51600	394	<500
	6/28/12	2420	<1.0	2.40	12.1	40.8	357	<500
	9/28/12	2170	<1.0	4.04	8.22	30.6	NT	NT
	4/2/13	5520	<1.0	5.55	22.8	104.5	130	<500
	6/12/13	1900	2.78	<1.0	10.6	26.9	<100	<500
NT-Dry	10/16/13	NT	NT	NT	NT	NT	NT	NT
	12/17/13	3650	<1.0	1.36	16.1	60.0	2200	<500
	3/17/14	3490	<1.0	<0.5	5.17	21.8	311	<500
	6/4/14	3800	<2.5	<2.5	11.8	34.6	<100	<500
NT-Dry	9/22/14	NT	NT	NT	NT	NT	NT	NT
NT-Dry	12/3/14	NT	NT	NT	NT	NT	NT	NT
	12/22/14	4210	<2.5	<2.5	9.16	37.6	<100	<500
	3/18/15	6810	2.86	3.14	20.9	120.4	1890	<500
	6/9/15	1150	<0.5	<0.5	2.20	10.5	<100	<500
Duplicate	6/9/15	2020	<0.5	<0.5	4.56	18.9	<100	<500
	4/13/16	8570	0.74	1.12	26.70	89.9	<100	<500
	4/19/17	7220	<1.0	2.59	12.00	65.6	<100	<500
	3/14/18	10200	1.41	5.67	27.70	71.2	<100	<500

Table 4
Summary of Petroleum Results

Well Number	Date Sampled	GRPH (µg/L)	Benzene (µg/L)	Toluene (µg/L)	Ethyl-benzene (µg/L)	Total Xylenes (µg/L)	DRPH (µg/L)	ORPH (µg/L)
Cleanup Level		800	5.00	1000	700	1000	500	500
MW-11	12/1/04	149	4.98	5.48	1.20	3.98	280	<500
	4/29/05	<100	<0.5	<2.0	<1.0	<1.5	<250	<500
	8/10/05	<100	<0.5	<2.0	<1.0	<1.5	<250	<500
	12/19/05	<100	<0.5	<2.0	<1.0	<1.5	<250	<500
	4/27/06	225	<0.5	<2.0	<1.0	<1.5	<250	<500
	9/29/06	347	<0.5	<2.0	<1.0	2.7	312	<500
	12/19/06	117	<0.5	<2.0	3.9	17.5	<250	<500
	3/19/07	155	<0.5	<2.0	2.0	9.8	253	<500
	6/26/07	223	<0.5	<2.0	1.3	11.5	362	<500
NT-Dry	9/27/07	NT	NT	NT	NT	NT	NT	NT
	11/2/07	<100	<0.5	<2.0	<1.0	1.7	<250	<500
	3/28/08	<100	<0.5	<2.0	<1.0	<1.5	328	<500
	6/4/08	<100	<0.5	<2.0	<1.0	<1.5	383	<472
	9/12/08	<100	<0.5	<2.0	<1.0	<1.5	378	<472
	Duplicate	<100	<0.5	<2.0	<1.0	<1.5	385	<472
	12/3/08	<100	<0.5	<2.0	<1.0	<1.5	<236	<472
	3/25/09	<500	<1.0	<1.0	<1.0	<2.0	<100	<500
NT-Dry	6/26/09	NT	NT	NT	NT	NT	NT	NT
NT-Dry	9/29/09	NT	NT	NT	NT	NT	NT	NT
	12/10/09	<500	<1.0	<1.0	<1.0	<2.0	<100	<500
	3/24/10	<250	<1.0	<1.0	<1.0	<2.0	190	<500
	6/17/10	<100	<1.0	<1.0	<1.0	<2.0	135	<500
	9/14/10	<100	<1.0	<1.0	<1.0	<2.0	268	<500
	Duplicate	<100	<1.0	<1.0	<1.0	<2.0	379	<500
	12/7/10	<100	<1.0	<1.0	<1.0	<2.0	<100	<500
	3/24/11	<100	<1.0	<1.0	<1.0	<2.0	150	668
	6/21/11	139	<1.0	<1.0	1.42	<2.0	745	<500
	11/22/11	<100	<1.0	<1.0	<1.0	<2.0	<100	<500
	Duplicate	<100	<1.0	<1.0	<1.0	<2.0	<100	<500
	12/28/11	<100	<1.0	<1.0	<1.0	<2.0	<100	<500
	3/16/12	<100	<1.0	<1.0	<1.0	<3.0	<100	<500
	9/28/12	<100	<1.0	<1.0	<1.0	<1.0	876	<500
	6/28/12	<100	<1.0	<1.0	<1.0	<3.0	300	<500
	1/10/13	<100	<1.0	<1.0	<1.0	<3.0	<100	<500
	4/1/13	<100	<1.0	<1.0	<1.0	<3.0	155	<500
	6/12/13	<100	<1.0	<1.0	<1.0	<3.0	170	<500
	10/16/13	NT	<1.0	<1.0	<1.0	<1.5	<100	<500
	12/17/13	<100	<0.5	<0.5	<0.5	<1.0	<100	<500
	3/17/14	<100	<0.5	<0.5	<0.5	<1.5	<100	<500
	6/4/14	<100	<0.5	<0.5	<0.5	<1.0	<100	<500
NT-Dry	9/22/14	NT	NT	NT	NT	NT	NT	NT
	12/3/14	<100	<0.5	<0.5	<0.5	<1.0	<100	<500
	3/18/15	<100	<0.5	<0.5	<0.5	<1.5	<100	<500
	6/9/15	<100	<0.5	<0.5	<0.5	<1.5	<100	<500
	4/16/16	<100	<0.5	<0.5	<0.5	<1.5	<100	<500
	4/19/17	NT	NT	NT	NT	NT	NT	NT

Table 4
Summary of Petroleum Results

Well Number	Date Sampled	GRPH (µg/L)	Benzene (µg/L)	Toluene (µg/L)	Ethyl-benzene (µg/L)	Total Xylenes (µg/L)	DRPH (µg/L)	ORPH (µg/L)
Cleanup Level		800	5	1000	700	1000	500	500
MW-12	12/1/04	<100	2.24	2.70	<1.0	<1.5	<250	<500
	4/29/05	<100	<0.5	<2.0	<1.0	<1.5	<250	<500
NT-Dry	8/10/05	NT	NT	NT	NT	NT	NT	NT
	12/19/05	<100	<0.5	<2.0	<1.0	<1.5	<250	<500
	4/27/06	195	7.55	<2.0	<1.0	<1.5	<250	<500
NT-Dry	9/29/06	NT	NT	NT	NT	NT	NT	NT
	12/19/06	<100	<0.5	<2.0	<1.0	<1.5	<250	<500
	3/19/07	<100	<0.5	<2.0	<1.0	<1.5	<250	<500
	6/26/07	<100	<0.5	<2.0	<1.0	<1.5	<250	<500
NT-Dry	9/27/07	NT	NT	NT	NT	NT	NT	NT
	11/2/07	<100	<0.5	<2.0	<1.0	<1.5	<250	<500
	3/28/08	<100	3.8	<2.0	<1.0	<1.5	<250	<500
	6/4/08	<100	<0.5	<2.0	<1.0	<1.5	<236	<472
NT-Dry	9/12/08	NT	NT	NT	NT	NT	NT	NT
	12/3/08	<100	<0.5	<2.0	<1.0	<1.5	<236	<472
	3/25/09	<500	<1.0	<1.0	<1.0	<2.0	<100	<500
	7/16/09	<500	<1.0	<1.0	<1.0	<2.0	104	<500
NT-Dry	9/29/09	NT	NT	NT	NT	NT	NT	NT
	12/11/09	<500	<1.0	<1.0	<1.0	<2.0	<100	<500
	3/24/10	<250	<1.0	<1.0	<1.0	<2.0	<100	<500
	6/17/10	<100	<1.0	<1.0	<1.0	<2.0	<100	<500
NT-Dry	9/14/10	NT	NT	NT	NT	NT	NT	NT
obstructed	12/7/10	NT	NT	NT	NT	NT	NT	NT
	3/25/11	<100	2.51	<1.0	1.10	<2.0	<100	<500
	6/21/11	<100	<1.0	<1.0	<1.0	<2.0	<100	<500
	11/22/11	<100	<1.0	<1.0	<1.0	<2.0	<100	<500
	12/28/11	<100	<1.0	<1.0	<1.0	<2.0	<100	<500
	3/15/12	<100	<1.0	<1.0	<1.0	<3.0	<100	<500
	6/28/12	<100	<1.0	<1.0	<1.0	<3.0	<100	<500
	9/28/12	<100	<1.0	<1.0	<1.0	<1.0	NT	NT
	1/10/13	<100	<1.0	<1.0	<1.0	<3.0	<100	<500
	4/1/13	<100	<1.0	<1.0	<1.0	<3.0	<100	<500
	6/12/13	<100	<1.0	<1.0	<1.0	<3.0	<100	<500
NT-Dry	10/16/13	NT	NT	NT	NT	NT	NT	NT
	12/17/13	<100	<0.5	<0.5	<0.5	<1.0	<100	<500
	3/18/14	<100	<0.5	<0.5	<0.5	<1.5	<100	<500
	6/4/14	<100	<0.5	<0.5	<0.5	<1.5	<100	<500
NT-Dry	9/22/14	NT	NT	NT	NT	NT	NT	NT
NT-Dry	12/3/14	NT	NT	NT	NT	NT	NT	NT
	12/22/14	<100	<0.5	<0.5	<0.5	<1.0	<100	<500
	3/18/15	105.0	5.92	<0.5	<0.5	<1.5	<100	<500
	6/9/15	<100	<0.5	<0.5	<0.5	<1.5	<100	<500
	4/13/16	<100	1.3	<0.5	<0.5	<1.5	<100	<500
	4/19/17	NT	NT	NT	NT	NT	NT	NT

Anatek Labs, Inc.

1282 Alturas Drive • Moscow, ID 83843 • (208) 883-2839 • Fax (208) 882-9246 • email moscow@anateklabs.com
504 E Sprague Ste. D • Spokane WA 99202 • (509) 838-3999 • Fax (509) 838-4433 • email spokane@anateklabs.com

Client: BUDINGER AND ASSOCIATES
Address: 1101 N FANCHER RD
SPOKANE VALLEY, WA 99212
Attn: STEVE BURCHETT

Batch #: 180315041
Project Name: X09032

Analytical Results Report

Sample Number	180315041-006	Sampling Date	3/14/2018	Date/Time Received	3/15/2018 1:05 PM		
Client Sample ID	MW-1	Sampling Time	1:20 PM	Extraction Date			
Matrix	Water	Sample Location					
Comments							
Parameter	Result	Units	PQL	Analysis Date	Analyst	Method	Qualifier
Benzene	<100	µg/L	100	3/28/2018 2:00:00 PM	ARY	EPA 8021	
Ethylbenzene	<100	µg/L	100	3/28/2018 2:00:00 PM	ARY	EPA 8021	
m+p-Xylene	<200	µg/L	200	3/28/2018 2:00:00 PM	ARY	EPA 8021	
methyl-t-butyl ether (MTBE)	<100	µg/L	100	3/28/2018 2:00:00 PM	ARY	EPA 8021	
o-Xylene	<100	µg/L	100	3/28/2018 2:00:00 PM	ARY	EPA 8021	
Toluene	<100	µg/L	100	3/28/2018 2:00:00 PM	ARY	EPA 8021	
Total BTEX	<100	µg/L	100	3/28/2018 2:00:00 PM	ARY	EPA 8021	
Diesel	ND	mg/L	0.1	3/23/2018 11:23:00 PM	LMD	NWTPHDX	
Lube Oil	ND	mg/L	0.5	3/23/2018 11:23:00 PM	LMD	NWTPHDX	
Gasoline	6.89	mg/L	2	3/28/2018 2:00:00 PM	ARY	NWTPHG	H2, C9

Surrogate Data

Sample Number	180315041-006		
Surrogate Standard	Method	Percent Recovery	Control Limits
4-Bromofluorobenzene	EPA 8021	98.1	70-130
hexacosane	NWTPHDX	70.2	50-150
4-Bromofluorobenzene	NWTPHG	101.0	50-150

Anatek Labs, Inc.

1282 Alturas Drive • Moscow, ID 83843 • (208) 883-2839 • Fax (208) 882-9246 • email moscow@anateklabs.com
504 E Sprague Ste. D • Spokane WA 99202 • (509) 838-3999 • Fax (509) 838-4433 • email spokane@anateklabs.com

Client: BUDINGER AND ASSOCIATES
Address: 1101 N FANCHER RD
SPOKANE VALLEY, WA 99212
Attn: STEVE BURCHETT

Batch #: 180315041
Project Name: X09032

Analytical Results Report

Sample Number	180315041-004	Sampling Date	3/14/2018	Date/Time Received	3/15/2018 1:05 PM		
Client Sample ID	MW-2	Sampling Time	11:50 AM	Extraction Date			
Matrix	Water	Sample Location					
Comments							
Parameter	Result	Units	PQL	Analysis Date	Analyst	Method	Qualifier
Benzene	22.8	µg/L	1	3/16/2018 5:27:00 PM	ARY	EPA 8021	
Ethylbenzene	12.5	µg/L	1	3/16/2018 5:27:00 PM	ARY	EPA 8021	
m+p-Xylene	16.5	µg/L	2	3/16/2018 5:27:00 PM	ARY	EPA 8021	
methyl-t-butyl ether (MTBE)	<1.0	µg/L	1	3/16/2018 5:27:00 PM	ARY	EPA 8021	
o-Xylene	2.02	µg/L	1	3/16/2018 5:27:00 PM	ARY	EPA 8021	
Toluene	2.31	µg/L	1	3/16/2018 5:27:00 PM	ARY	EPA 8021	
Total BTEX	56.2	µg/L	1	3/16/2018 5:27:00 PM	ARY	EPA 8021	
Diesel	ND	mg/L	0.1	3/23/2018 9:32:00 PM	LMD	NWTPHDX	
Lube Oil	ND	mg/L	0.5	3/23/2018 9:32:00 PM	LMD	NWTPHDX	
Gasoline	0.340	mg/L	0.1	3/28/2018 12:18:00 AM	ARY	NWTPHG	

Surrogate Data

Sample Number	180315041-004		
Surrogate Standard	Method	Percent Recovery	Control Limits
4-Bromofluorobenzene	EPA 8021	100.0	70-130
hexacosane	NWTPHDX	59.8	50-150
4-Bromofluorobenzene	NWTPHG	104.0	50-150

Anatek Labs, Inc.

1282 Alturas Drive • Moscow, ID 83843 • (208) 883-2839 • Fax (208) 882-9246 • email moscow@anateklabs.com
504 E Sprague Ste. D • Spokane WA 99202 • (509) 838-3999 • Fax (509) 838-4433 • email spokane@anateklabs.com

Client: BUDINGER AND ASSOCIATES
Address: 1101 N FANCHER RD
SPOKANE VALLEY, WA 99212
Attn: STEVE BURCHETT

Batch #: 180315041
Project Name: X09032

Analytical Results Report

Sample Number	180315041-007	Sampling Date	3/14/2018	Date/Time Received	3/15/2018 1:05 PM		
Client Sample ID	MW-3	Sampling Time	2:00 PM	Extraction Date			
Matrix	Water	Sample Location					
Comments							
Parameter	Result	Units	PQL	Analysis Date	Analyst	Method	Qualifier
Benzene	1.27	µg/L	1	3/16/2018 7:21:00 PM	ARY	EPA 8021	
Ethylbenzene	3.27	µg/L	1	3/16/2018 7:21:00 PM	ARY	EPA 8021	
m+p-Xylene	1.18	µg/L	2	3/16/2018 7:21:00 PM	ARY	EPA 8021	
methyl-t-butyl ether (MTBE)	<1.0	µg/L	1	3/16/2018 7:21:00 PM	ARY	EPA 8021	
o-Xylene	2.07	µg/L	1	3/16/2018 7:21:00 PM	ARY	EPA 8021	
Toluene	1.16	µg/L	1	3/16/2018 7:21:00 PM	ARY	EPA 8021	
Total BTEX	8.95	µg/L	1	3/16/2018 7:21:00 PM	ARY	EPA 8021	
Diesel	ND	mg/L	0.1	3/24/2018 12:18:00 PM	LMD	NWTPHDX	
Lube Oil	ND	mg/L	0.5	3/24/2018 12:18:00 PM	LMD	NWTPHDX	
Gasoline	0.926	mg/L	0.1	3/28/2018 2:39:00 PM	ARY	NWTPHG	

Surrogate Data

Sample Number	180315041-007		
Surrogate Standard	Method	Percent Recovery	Control Limits
4-Bromofluorobenzene	EPA 8021	101.0	70-130
hexacosane	NWTPHDX	67.2	50-150
4-Bromofluorobenzene	NWTPHG	111.0	50-150

Anatek Labs, Inc.

1282 Alturas Drive • Moscow, ID 83843 • (208) 883-2839 • Fax (208) 882-9246 • email moscow@anateklabs.com
504 E Sprague Ste. D • Spokane WA 99202 • (509) 838-3999 • Fax (509) 838-4433 • email spokane@anateklabs.com

Client: BUDINGER AND ASSOCIATES
Address: 1101 N FANCHER RD
SPOKANE VALLEY, WA 99212
Attn: STEVE BURCHETT

Batch #: 180315041
Project Name: X09032

Analytical Results Report

Sample Number	180315041-005	Sampling Date	3/14/2018	Date/Time Received	3/15/2018 1:05 PM		
Client Sample ID	MW-4	Sampling Time	12:25 PM	Extraction Date			
Matrix	Water	Sample Location					
Comments							
Parameter	Result	Units	PQL	Analysis Date	Analyst	Method	Qualifier
Benzene	137	µg/L	100	3/16/2018 6:05:00 PM	ARY	EPA 8021	
Ethylbenzene	506	µg/L	100	3/16/2018 6:05:00 PM	ARY	EPA 8021	
m+p-Xylene	<200	µg/L	200	3/16/2018 6:05:00 PM	ARY	EPA 8021	
methyl-t-butyl ether (MTBE)	<100	µg/L	100	3/16/2018 6:05:00 PM	ARY	EPA 8021	
o-Xylene	<100	µg/L	100	3/16/2018 6:05:00 PM	ARY	EPA 8021	
Toluene	<100	µg/L	100	3/16/2018 6:05:00 PM	ARY	EPA 8021	
Total BTEX	643	µg/L	100	3/16/2018 6:05:00 PM	ARY	EPA 8021	
Diesel	ND	mg/L	0.1	3/23/2018 10:28:00 PM	LMD	NWTPHDX	
Lube Oil	ND	mg/L	0.5	3/23/2018 10:28:00 PM	LMD	NWTPHDX	
Gasoline	17.3	mg/L	3.33	3/28/2018 1:22:00 PM	ARY	NWTPHG	

Surrogate Data

Sample Number	180315041-005		
Surrogate Standard	Method	Percent Recovery	Control Limits
4-Bromofluorobenzene	EPA 8021	99.6	70-130
hexacosane	NWTPHDX	61.8	50-150
4-Bromofluorobenzene	NWTPHG	103.0	50-150

Anatek Labs, Inc.

1282 Alturas Drive • Moscow, ID 83843 • (208) 883-2839 • Fax (208) 882-9246 • email moscow@anateklabs.com
504 E Sprague Ste. D • Spokane WA 99202 • (509) 838-3999 • Fax (509) 838-4433 • email spokane@anateklabs.com

Client: BUDINGER AND ASSOCIATES
Address: 1101 N FANCHER RD
SPOKANE VALLEY, WA 99212
Attn: STEVE BURCHETT

Batch #: 180315041
Project Name: X09032

Analytical Results Report

Sample Number	180315041-003	Sampling Date	3/14/2018	Date/Time Received	3/15/2018 1:05 PM		
Client Sample ID	MW-6	Sampling Time	11:15 AM	Extraction Date			
Matrix	Water	Sample Location					
Comments							
Parameter	Result	Units	PQL	Analysis Date	Analyst	Method	Qualifier
Benzene	229	µg/L	100	3/16/2018 4:49:00 PM	ARY	EPA 8021	
Ethylbenzene	257	µg/L	100	3/16/2018 4:49:00 PM	ARY	EPA 8021	
m+p-Xylene	229	µg/L	200	3/16/2018 4:49:00 PM	ARY	EPA 8021	
methyl-t-butyl ether (MTBE)	<100	µg/L	100	3/16/2018 4:49:00 PM	ARY	EPA 8021	
o-Xylene	<100	µg/L	100	3/16/2018 4:49:00 PM	ARY	EPA 8021	
Toluene	<100	µg/L	100	3/16/2018 4:49:00 PM	ARY	EPA 8021	
Total BTEX	715	µg/L	100	3/16/2018 4:49:00 PM	ARY	EPA 8021	
Diesel	ND	mg/L	0.1	3/23/2018 8:37:00 PM	LMD	NWTPHDX	
Lube Oil	ND	mg/L	0.5	3/23/2018 8:37:00 PM	LMD	NWTPHDX	
Gasoline	16.1	mg/L	3.33	3/27/2018 11:40:00 PM	ARY	NWTPHG	

Surrogate Data

Sample Number	180315041-003		
Surrogate Standard	Method	Percent Recovery	Control Limits
4-Bromofluorobenzene	EPA 8021	101.0	70-130
hexacosane	NWTPHDX	66.0	50-150
4-Bromofluorobenzene	NWTPHG	104.0	50-150

Anatek Labs, Inc.

1282 Alturas Drive • Moscow, ID 83843 • (208) 883-2839 • Fax (208) 882-9246 • email moscow@anateklabs.com
504 E Sprague Ste. D • Spokane WA 99202 • (509) 838-3999 • Fax (509) 838-4433 • email spokane@anateklabs.com

Client: BUDINGER AND ASSOCIATES
Address: 1101 N FANCHER RD
SPOKANE VALLEY, WA 99212
Attn: STEVE BURCHETT

Batch #: 180315041
Project Name: X09032

Analytical Results Report

Sample Number	180315041-001	Sampling Date	3/14/2018	Date/Time Received	3/15/2018 1:05 PM
Client Sample ID	MW-9	Sampling Time	10:10 AM	Extraction Date	
Matrix	Water	Sample Location			
Comments					

Parameter	Result	Units	PQL	Analysis Date	Analyst	Method	Qualifier
Benzene	<1.0	µg/L	1	3/16/2018 3:33:00 PM	ARY	EPA 8021	
Ethylbenzene	<1.0	µg/L	1	3/16/2018 3:33:00 PM	ARY	EPA 8021	
m+p-Xylene	<2.0	µg/L	2	3/16/2018 3:33:00 PM	ARY	EPA 8021	
methyl-t-butyl ether (MTBE)	<1.0	µg/L	1	3/16/2018 3:33:00 PM	ARY	EPA 8021	
o-Xylene	<1.0	µg/L	1	3/16/2018 3:33:00 PM	ARY	EPA 8021	
Toluene	<1.0	µg/L	1	3/16/2018 3:33:00 PM	ARY	EPA 8021	
Total BTEX	<1.0	µg/L	1	3/16/2018 3:33:00 PM	ARY	EPA 8021	
Diesel	ND	mg/L	0.1	3/23/2018 4:57:00 PM	LMD	NWTPHDX	
Lube Oil	ND	mg/L	0.5	3/23/2018 4:57:00 PM	LMD	NWTPHDX	
Gasoline	<0.1	mg/L	0.1	3/27/2018 10:24:00 PM	ARY	NWTPHG	

Surrogate Data

Sample Number	180315041-001		
Surrogate Standard	Method	Percent Recovery	Control Limits
4-Bromofluorobenzene	EPA 8021	100.0	70-130
hexacosane	NWTPHDX	76.8	50-150
4-Bromofluorobenzene	NWTPHG	103.0	50-150

Anatek Labs, Inc.

1282 Alturas Drive • Moscow, ID 83843 • (208) 883-2839 • Fax (208) 882-9246 • email moscow@anateklabs.com
504 E Sprague Ste. D • Spokane WA 99202 • (509) 838-3999 • Fax (509) 838-4433 • email spokane@anateklabs.com

Client: BUDINGER AND ASSOCIATES
Address: 1101 N FANCHER RD
SPOKANE VALLEY, WA 99212
Attn: STEVE BURCHETT

Batch #: 180315041
Project Name: X09032

Analytical Results Report

Sample Number	180315041-002	Sampling Date	3/14/2018	Date/Time Received	3/15/2018 1:05 PM		
Client Sample ID	MW-10	Sampling Time	10:45 AM	Extraction Date			
Matrix	Water	Sample Location					
Comments							
Parameter	Result	Units	PQL	Analysis Date	Analyst	Method	Qualifier
Benzene	1.41	µg/L	1	3/27/2018 11:02:00 PM	ARY	EPA 8021	C9
Ethylbenzene	27.7	µg/L	1	3/27/2018 11:02:00 PM	ARY	EPA 8021	C9
m+p-Xylene	71.2	µg/L	66.6	3/27/2018 11:02:00 PM	ARY	EPA 8021	
methyl-t-butyl ether (MTBE)	<1.0	µg/L	1	3/27/2018 11:02:00 PM	ARY	EPA 8021	C9
o-Xylene	13.1	µg/L	1	3/27/2018 11:02:00 PM	ARY	EPA 8021	C9
Toluene	5.67	µg/L	1	3/27/2018 11:02:00 PM	ARY	EPA 8021	C9
Total BTEX	119	µg/L	1	3/27/2018 11:02:00 PM	ARY	EPA 8021	C9
Diesel	ND	mg/L	0.1	3/23/2018 7:42:00 PM	LMD	NWTPHDX	
Lube Oil	ND	mg/L	0.5	3/23/2018 7:42:00 PM	LMD	NWTPHDX	
Gasoline	10.2	mg/L	3.33	3/27/2018 11:02:00 PM	ARY	NWTPHG	

Surrogate Data

Sample Number	180315041-002		
Surrogate Standard	Method	Percent Recovery	Control Limits
4-Bromofluorobenzene	EPA 8021	99.0	70-130
hexacosane	NWTPHDX	80.6	50-150
4-Bromofluorobenzene	NWTPHG	102.0	50-150

Anatek Labs, Inc.

1282 Alturas Drive • Moscow, ID 83843 • (208) 883-2839 • Fax (208) 882-9246 • email moscow@anateklabs.com
504 E Sprague Ste. D • Spokane WA 99202 • (509) 838-3999 • Fax (509) 838-4433 • email spokane@anateklabs.com

Client: BUDINGER AND ASSOCIATES
Address: 1101 N FANCHER RD
SPOKANE VALLEY, WA 99212
Attn: STEVE BURCHETT

Batch #: 180315041
Project Name: X09032

Analytical Results Report

Sample Number	180315041-008	Sampling Date	3/14/2018	Date/Time Received	3/15/2018 1:05 PM		
Client Sample ID	DUPLICATE	Sampling Time		Extraction Date			
Matrix	Water	Sample Location					
Comments							
Parameter	Result	Units	PQL	Analysis Date	Analyst	Method	Qualifier
Benzene	<1.0	µg/L	1	3/16/2018 7:59:00 PM	ARY	EPA 8021	
Ethylbenzene	<1.0	µg/L	1	3/16/2018 7:59:00 PM	ARY	EPA 8021	
m+p-Xylene	<2.0	µg/L	2	3/16/2018 7:59:00 PM	ARY	EPA 8021	
methyl-t-butyl ether (MTBE)	<1.0	µg/L	1	3/16/2018 7:59:00 PM	ARY	EPA 8021	
o-Xylene	<1.0	µg/L	1	3/16/2018 7:59:00 PM	ARY	EPA 8021	
Toluene	<1.0	µg/L	1	3/16/2018 7:59:00 PM	ARY	EPA 8021	
Total BTEX	<1.0	µg/L	1	3/16/2018 7:59:00 PM	ARY	EPA 8021	
Diesel	ND	mg/L	0.1	3/24/2018 1:13:00 AM	LMD	NWTPHDX	
Lube Oil	ND	mg/L	0.5	3/24/2018 1:13:00 AM	LMD	NWTPHDX	
Gasoline	<0.1	mg/L	0.1	3/28/2018 3:17:00 PM	ARY	NWTPHG	

Surrogate Data

Sample Number	180315041-008		
Surrogate Standard	Method	Percent Recovery	Control Limits
4-Bromofluorobenzene	EPA 8021	102.0	70-130
hexacosane	NWTPHDX	66.4	50-150
4-Bromofluorobenzene	NWTPHG	102.0	50-150

Anatek Labs, Inc.

1282 Alturas Drive • Moscow, ID 83843 • (208) 883-2839 • Fax (208) 882-9246 • email moscow@anateklabs.com
504 E Sprague Ste. D • Spokane WA 99202 • (509) 838-3999 • Fax (509) 838-4433 • email spokane@anateklabs.com

Client: BUDINGER AND ASSOCIATES
Address: 1101 N FANCHER RD
SPOKANE VALLEY, WA 99212
Attn: STEVE BURCHETT

Batch #: 180315041
Project Name: X09032

Analytical Results Report

Sample Number	180315041-009	Sampling Date	3/14/2018	Date/Time Received	3/15/2018 1:05 PM		
Client Sample ID	TRIP BLANK	Sampling Time		Extraction Date			
Matrix	Water	Sample Location					
Comments							
Parameter	Result	Units	PQL	Analysis Date	Analyst	Method	Qualifier
Benzene	<1.0	µg/L	1	3/16/2018 8:37:00 PM	ARY	EPA 8021	
Ethylbenzene	<1.0	µg/L	1	3/16/2018 8:37:00 PM	ARY	EPA 8021	
m+p-Xylene	<2.0	µg/L	2	3/16/2018 8:37:00 PM	ARY	EPA 8021	
methyl-t-butyl ether (MTBE)	<1.0	µg/L	1	3/16/2018 8:37:00 PM	ARY	EPA 8021	
o-Xylene	<1.0	µg/L	1	3/16/2018 8:37:00 PM	ARY	EPA 8021	
Toluene	<1.0	µg/L	1	3/16/2018 8:37:00 PM	ARY	EPA 8021	
Total BTEX	<1.0	µg/L	1	3/16/2018 8:37:00 PM	ARY	EPA 8021	
Gasoline	<0.1	mg/L	0.1	3/28/2018 3:56:00 PM	ARY	NWTPHG	

Surrogate Data

Sample Number	180315041-009			
Surrogate Standard	Method	Percent Recovery	Control Limits	
4-Bromofluorobenzene	EPA 8021	98.7	70-130	
4-Bromofluorobenzene	NWTPHG	102.0	50-150	

Anatek Labs, Inc.

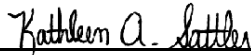
1282 Alturas Drive • Moscow, ID 83843 • (208) 883-2839 • Fax (208) 882-9246 • email moscow@anateklabs.com
504 E Sprague Ste. D • Spokane WA 99202 • (509) 838-3999 • Fax (509) 838-4433 • email spokane@anateklabs.com

Client: BUDINGER AND ASSOCIATES
Address: 1101 N FANCHER RD
SPOKANE VALLEY, WA 99212
Attn: STEVE BURCHETT

Batch #: 180315041
Project Name: X09032

Analytical Results Report

Authorized Signature



Kathleen A. Sattler, Lab Manager

C9 Confirmatory analysis was past holding time. Original result confirmed
H2 Initial analysis within holding time, Reanalysis for the required dilution was past holding time.
MCL EPA's Maximum Contaminant Level
ND Not Detected
PQL Practical Quantitation Limit

This report shall not be reproduced except in full, without the written approval of the laboratory.
The results reported relate only to the samples indicated.
Soil/solid results are reported on a dry-weight basis unless otherwise noted.

Anatek Labs, Inc.

1282 Alturas Drive • Moscow, ID 83843 • (208) 883-2839 • Fax (208) 882-9246 • email moscow@anateklabs.com
504 E Sprague Ste. D • Spokane WA 99202 • (509) 838-3999 • Fax (509) 838-4433 • email spokane@anateklabs.com

Login Report

Customer Name: BUDINGER AND ASSOCIATES

Order ID: 180315041

1101 N FANCHER RD

Order Date: 3/15/2018

SPOKANE VALLEY WA 99212

Contact Name: STEVE BURCHETT

Project Name: X09032

Comment:

Sample #: 180315041-001 **Customer Sample #:** MW-9

Recv'd: **Matrix:** Water **Collector:** JASON PRITZL **Date Collected:** 3/14/2018

Quantity: 3 **Date Received:** 3/15/2018 1:05:00 PM **Time Collected:** 10:10 AM

Comment:

Test	Lab	Method	Due Date	Priority
BTEX 8021	S	EPA 8021	3/27/2018	<u>Normal (~10 Days)</u>
TPHDX-NW	S	NWTPHDX	3/27/2018	<u>Normal (~10 Days)</u>
TPHG-NW-SPO	S	NWTPHG	3/27/2018	<u>Normal (~10 Days)</u>

Sample #: 180315041-002 **Customer Sample #:** MW-10

Recv'd: **Matrix:** Water **Collector:** JASON PRITZL **Date Collected:** 3/14/2018

Quantity: 3 **Date Received:** 3/15/2018 1:05:00 PM **Time Collected:** 10:45 AM

Comment:

Test	Lab	Method	Due Date	Priority
BTEX 8021	S	EPA 8021	3/27/2018	<u>Normal (~10 Days)</u>
TPHDX-NW	S	NWTPHDX	3/27/2018	<u>Normal (~10 Days)</u>
TPHG-NW-SPO	S	NWTPHG	3/27/2018	<u>Normal (~10 Days)</u>

Sample #: 180315041-003 **Customer Sample #:** MW-6

Recv'd: **Matrix:** Water **Collector:** JASON PRITZL **Date Collected:** 3/14/2018

Quantity: 3 **Date Received:** 3/15/2018 1:05:00 PM **Time Collected:** 11:15 AM

Comment:

Test	Lab	Method	Due Date	Priority
BTEX 8021	S	EPA 8021	3/27/2018	<u>Normal (~10 Days)</u>
TPHDX-NW	S	NWTPHDX	3/27/2018	<u>Normal (~10 Days)</u>
TPHG-NW-SPO	S	NWTPHG	3/27/2018	<u>Normal (~10 Days)</u>

Customer Name: BUDINGER AND ASSOCIATES
1101 N FANCHER RD
SPOKANE VALLEY WA 99212

Order ID: 180315041
Order Date: 3/15/2018

Contact Name: STEVE BURCHETT

Project Name: X09032

Comment:

Sample #: 180315041-004 **Customer Sample #:** MW-2

Recv'd: **Matrix:** Water **Collector:** JASON PRITZL **Date Collected:** 3/14/2018

Quantity: 3 **Date Received:** 3/15/2018 1:05:00 PM **Time Collected:** 11:50 AM

Comment:

Test	Lab	Method	Due Date	Priority
BTEX 8021	S	EPA 8021	3/27/2018	<u>Normal (~10 Days)</u>
TPHDX-NW	S	NWTPHDX	3/27/2018	<u>Normal (~10 Days)</u>
TPHG-NW-SPO	S	NWTPHG	3/27/2018	<u>Normal (~10 Days)</u>

Sample #: 180315041-005 **Customer Sample #:** MW-4

Recv'd: **Matrix:** Water **Collector:** JASON PRITZL **Date Collected:** 3/14/2018

Quantity: 3 **Date Received:** 3/15/2018 1:05:00 PM **Time Collected:** 12:25 PM

Comment:

Test	Lab	Method	Due Date	Priority
BTEX 8021	S	EPA 8021	3/27/2018	<u>Normal (~10 Days)</u>
TPHDX-NW	S	NWTPHDX	3/27/2018	<u>Normal (~10 Days)</u>
TPHG-NW-SPO	S	NWTPHG	3/27/2018	<u>Normal (~10 Days)</u>

Sample #: 180315041-006 **Customer Sample #:** MW-1

Recv'd: **Matrix:** Water **Collector:** JASON PRITZL **Date Collected:** 3/14/2018

Quantity: 3 **Date Received:** 3/15/2018 1:05:00 PM **Time Collected:** 1:20 PM

Comment:

Test	Lab	Method	Due Date	Priority
BTEX 8021	S	EPA 8021	3/27/2018	<u>Normal (~10 Days)</u>
TPHDX-NW	S	NWTPHDX	3/27/2018	<u>Normal (~10 Days)</u>
TPHG-NW-SPO	S	NWTPHG	3/27/2018	<u>Normal (~10 Days)</u>

Sample #: 180315041-007 **Customer Sample #:** MW-3

Recv'd: **Matrix:** Water **Collector:** JASON PRITZL **Date Collected:** 3/14/2018

Quantity: 3 **Date Received:** 3/15/2018 1:05:00 PM **Time Collected:** 2:00 PM

Comment:

Test	Lab	Method	Due Date	Priority
BTEX 8021	S	EPA 8021	3/27/2018	<u>Normal (~10 Days)</u>

Customer Name: BUDINGER AND ASSOCIATES
1101 N FANCHER RD
SPOKANE VALLEY WA 99212

Order ID: 180315041
Order Date: 3/15/2018

Contact Name: STEVE BURCHETT

Project Name: X09032

Comment:

TPHDX-NW S NWTPHDX 3/27/2018 Normal (~10 Days)
TPHG-NW-SPO S NWTPHG 3/27/2018 Normal (~10 Days)

Sample #: 180315041-008 **Customer Sample #:** DUPLICATE

Recv'd: **Matrix:** Water **Collector:** JASON PRITZL **Date Collected:** 3/14/2018
Quantity: 3 **Date Received:** 3/15/2018 1:05:00 PM **Time Collected:**

Comment:

Test	Lab	Method	Due Date	Priority
BTEX 8021	S	EPA 8021	3/27/2018	<u>Normal (~10 Days)</u>
TPHDX-NW	S	NWTPHDX	3/27/2018	<u>Normal (~10 Days)</u>
TPHG-NW-SPO	S	NWTPHG	3/27/2018	<u>Normal (~10 Days)</u>

Sample #: 180315041-009 **Customer Sample #:** TRIP BLANK

Recv'd: **Matrix:** Water **Collector:** JASON PRITZL **Date Collected:** 3/14/2018
Quantity: 2 **Date Received:** 3/15/2018 1:05:00 PM **Time Collected:**

Comment:

Test	Lab	Method	Due Date	Priority
BTEX 8021	S	EPA 8021	3/27/2018	<u>Normal (~10 Days)</u>
TPHG-NW-SPO	S	NWTPHG	3/27/2018	<u>Normal (~10 Days)</u>

SAMPLE CONDITION RECORD

Samples received in a cooler? Yes
Samples received intact? Yes
What is the temperature of the sample(s)? (°C) 3.3/3.4
Samples received with a COC? Yes
Samples received within holding time? Yes
Are all sample bottles properly preserved? Yes
Are VOC samples free of headspace? Yes
Is there a trip blank to accompany VOC samples? Yes
Labels and chain agree? Yes
Total number of containers? 26



Chain of Custody Record

1282 Alturas Drive, Moscow ID 83843 (208) 883-2839 FAX 882-9246
504 E Sprague Ste D, Spokane WA 99202 (509) 838-3999 FAX 838-4433

30315 041 BUDI Last Due **3/27/2018**
1st SAMP 3/14/2018 1st RCVD 3/15/2018
X 09032

Company Name: Budinger & Associates, Inc.	Project Manager: Steve Burchett
Address: 1101 N. Fancher	Project Name & #: X09032
City: Spokane Valley State: WA Zip: 99212	Email Address: sburchett@budingerinc.com
Phone: 509-535-4441	Purchase Order #:
Fax:	Sampler Name & phone: Jason Pitzel 509-951-2401

Turn Around Time & Reporting

Please refer to our normal turn around times at:
<http://www.anateklabs.com/services/guidelines/reporting.asp>

- | | | |
|--|--|--------------------------------|
| <input checked="" type="checkbox"/> Normal | *All rush order requests must be prior approved. | <input type="checkbox"/> Phone |
| <input type="checkbox"/> Next Day* | | <input type="checkbox"/> Mail |
| <input type="checkbox"/> 2nd Day* | | <input type="checkbox"/> Fax |
| <input type="checkbox"/> Other* | | <input type="checkbox"/> Email |

Provide Sample Description **List Analyses Requested**

Lab ID	Sample Identification	Sampling Date/Time	Matrix	Preservative:									
				# of Containers	Sample Volume	TPH SA							
	MW-9	3-14-18 1010	SW	3									
	MW-10	1045											
	MW-6	1115											
	MW-2	1150											
	MW-4	1225											
	MW-1	1320											
	MW-3	1400											
	Duplicate Trip Blank					X	X	X					

Note Special Instructions/Comments

SWBS

trip
run dup per Jason

Inspection Checklist

Received Intact?	<input checked="" type="checkbox"/> Y	<input type="checkbox"/> N
Labels & Chains Agree?	<input checked="" type="checkbox"/> Y	<input type="checkbox"/> N
Containers Sealed?	<input checked="" type="checkbox"/> Y	<input type="checkbox"/> N
VOC Head Space?	<input type="checkbox"/> Y	<input checked="" type="checkbox"/> N
Cooler Ice/Hand		
Temperature (°C)	3.3/3.4 IR#1	
Preservative:	HCl	
PH	P16230-N	
Date & Time:	3-15-18	
Inspected By:	W/ly	

	Printed Name	Signature	Company	Date	Time
Relinquished by	Jason Pitzel	<i>[Signature]</i>	Budinger	3-15-18	1305
Received by	Kathy Sattler	<i>[Signature]</i>	Anatek Labs	3-15-18	1305
Relinquished by					
Received by					
Relinquished by					
Received by					