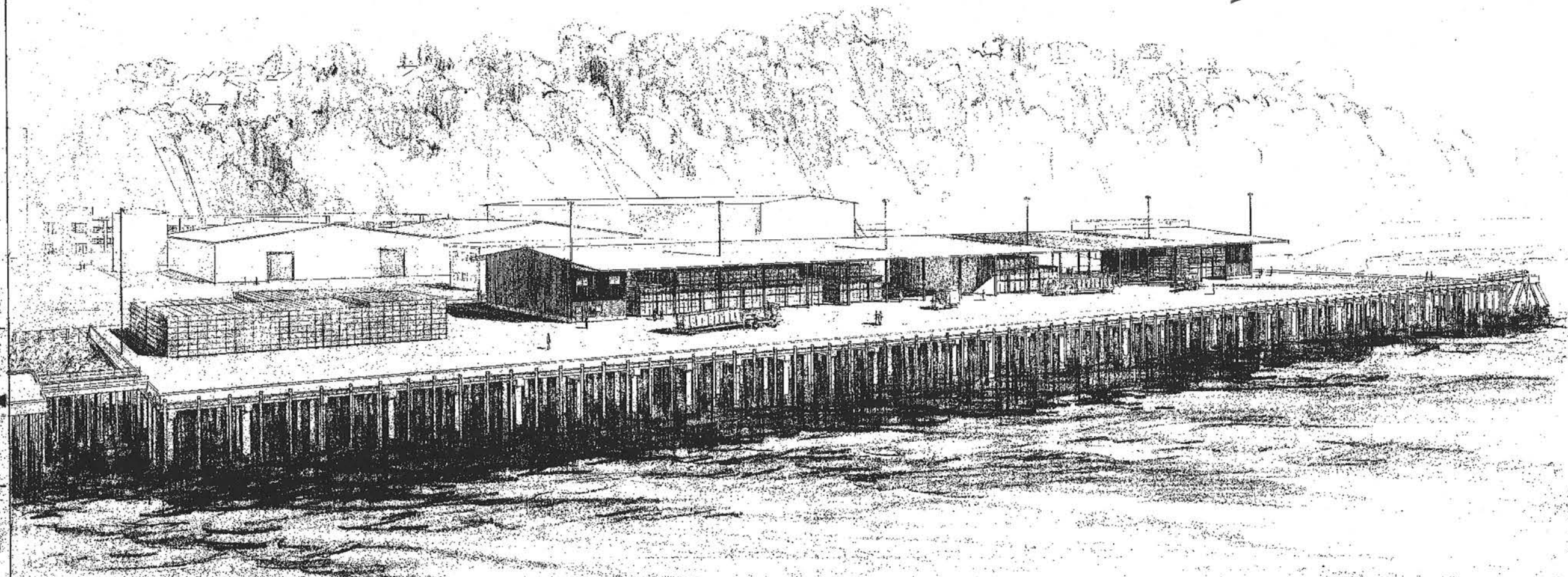


APPENDIX C
Berth 1 As-Built Drawings

92.68



1978

WEYERHAEUSER COMPANY Cargo Dock & Warehouse Addition Everett, Wash.

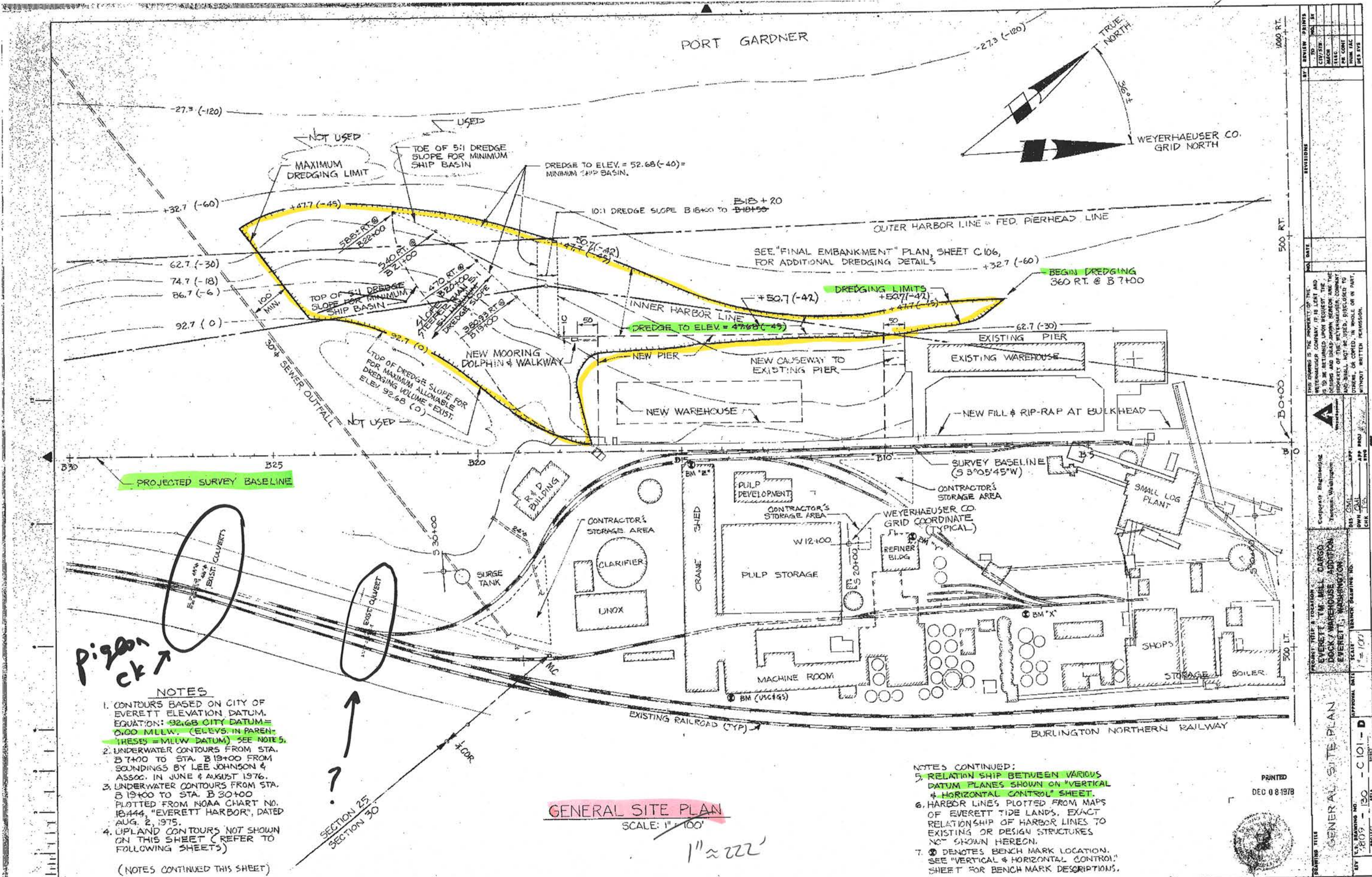
Reduced in size; check all scales

PRINTED
DEC 08 1978

AS BUILT DRAWINGS

• ORIG. TRACINGS TO C.E. FILES, Tacoma

PROJECT TITLE & LOCATION EVERETT MILL CARGO DOCK WAREHOUSE ADDITION EVERETT, WASHINGTON	SEARCH DRAWING NO. SCALE	APPROVAL DATE D	DRAWING NO. 061734	SHEET 1
	DESIGNED BY DES	CHECKED BY CAF	APP. PROJ. INC	INC
COPYRIGHT ENGINEERING Tacoma, Washington				
THIS DRAWING IS THE PROPERTY OF THE WYERHAEUSER COMPANY. IT IS LOANED TO YOU FOR YOUR INFORMATION AND IS TO BE RETURNED UPON REQUEST. THE DECISIONS AND IDEAS SHOWN HEREON ARE THE PROPERTY OF THE WYERHAEUSER COMPANY AND SHALL NOT BE USED, DISCLOSED TO OTHERS, OR COPIED, IN WHOLE OR IN PART, WITHOUT WRITTEN PERMISSION.				
REVISIONS	NO. DATE	BY	REVIEW	PRINT
1	12/8/78	[Signature]	CIVIL/STR	NO. 57
2	12/8/78	[Signature]	MECH	NO. 58
3	12/8/78	[Signature]	ELEC	NO. 59
4	12/8/78	[Signature]	PA CONT	NO. 60
5	12/8/78	[Signature]	MUM FAC	NO. 61
6	12/8/78	[Signature]	DES SYS	NO. 62



REVISIONS		DATE	BY	REVIEW	PRINTS
NO.	TO	DATE	BY	REVIEW	PRINTS

PROJECT TITLE & LOCATION		SCALE	APPROVAL DATE
EVERETT MILL CARGO DOCK / WAREHOUSE ADDITION EVERETT, WASHINGTON		1" = 100'	

DATE	BY	SCALE	APPROVAL DATE
8/8/89		1" = 100'	

POE_MILL_A-061737

NOTE:
 UNDERWATER CONTOURS FROM STATION
 B-19-00 TO B-23-00 FROM NO/A CHART,
 SEE NOTE 3, SHEET C101.

LAND CONTOURS FROM AERIAL TOPO BY
 AERO DATA CORP. ON JUNE 1, 1976

PORT GARDNER



1" = 111'

1" = 111'

SCALE: 1" = 50'

EXISTING SITE PLAN

PRINTED
 DEC 08 1978

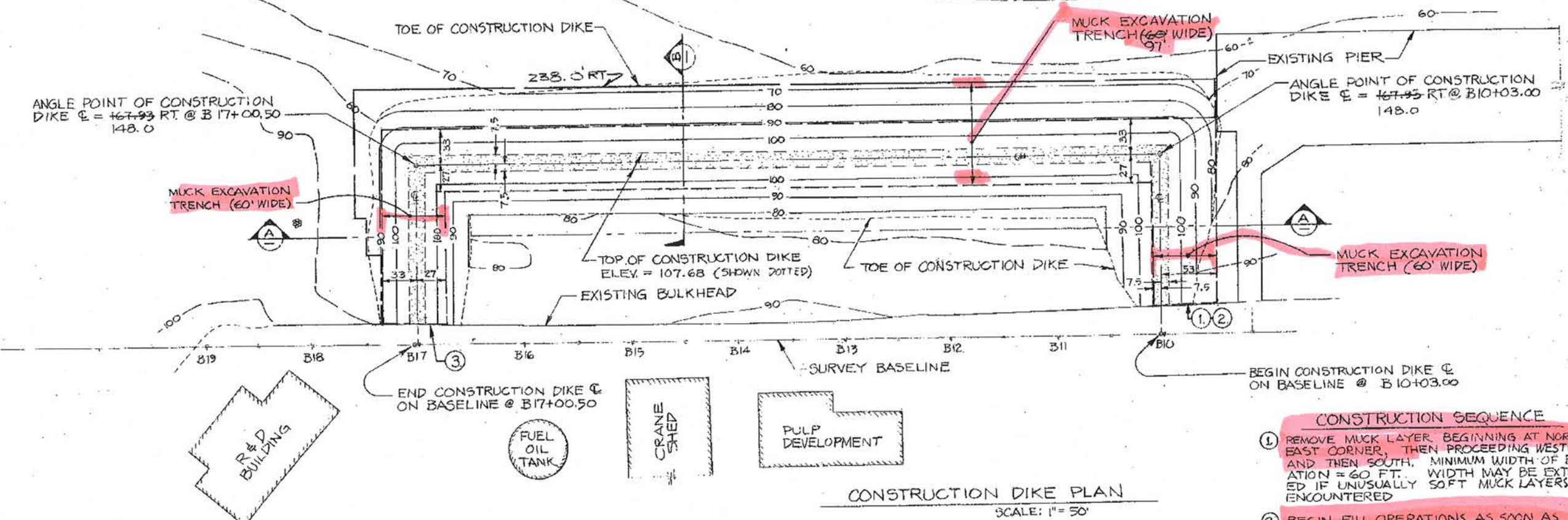


NO.	DATE	REVISIONS

PROJECT TITLE: LOCATION
 EVERETT T.M. MILL CARGO
 DOCK/WAREHOUSE ADDITION
 EVERETT, WASHINGTON
 DRAWING NO. 6809-000-C103-D
 SHEET 1 OF 1

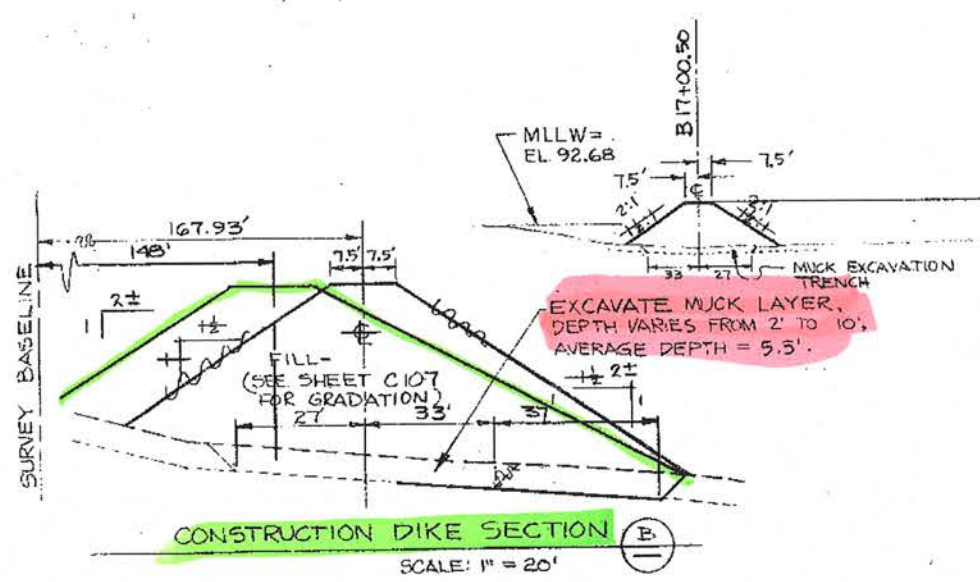
Top and outboard top of berm

PORT GARDNER

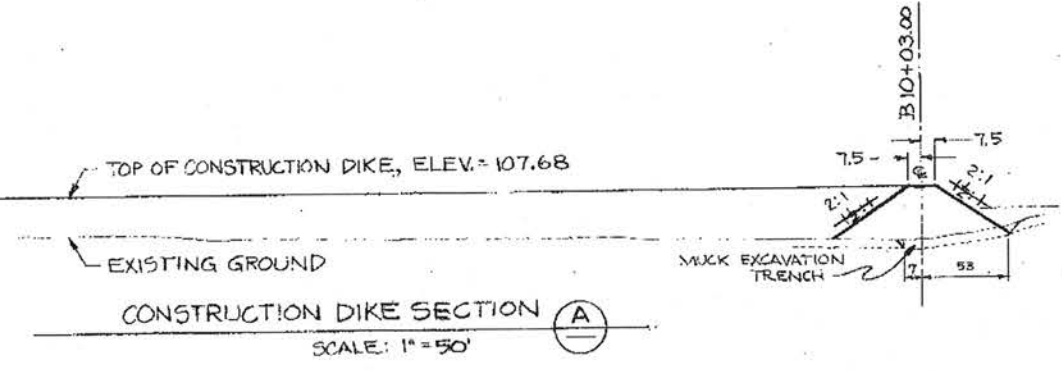


CONSTRUCTION DIKE PLAN
SCALE: 1" = 50'

- CONSTRUCTION SEQUENCE**
- REMOVE MUCK LAYER BEGINNING AT NORTH-EAST CORNER, THEN PROCEEDING WESTWARD AND THEN SOUTH. MINIMUM WIDTH OF EXCAVATION = 60 FT. WIDTH MAY BE EXTENDED IF UNUSUALLY SOFT MUCK LAYERS ARE ENCOUNTERED.
 - BEGIN FILL OPERATIONS AS SOON AS POSSIBLE AFTER MUCK LAYER HAS BEEN REMOVED. (NOTE: MUCK MAY FLOW BACK INTO THE EXCAVATED TRENCH). CONTRACTOR TO SCHEDULE MUCK EXCAVATION AND FILL OPERATIONS TO AVOID PLACING FILL ON TOP OF MUCK IN MUCK REMOVAL AREA. FILL TO BE PLACED IN CENTER OF TRENCH INITIALLY AND EXPANDED LATERALLY AND OUTWARD TO AVOID RETAINING ANY MUCK IN TRENCH AREA. PRIOR TO FILL PLACEMENT, BOTTOM OF TRENCH TO BE INSPECTED AND APPROVED BY THE ENGINEER. SEE SHEET C-107 FOR GRADATION LIMITS FOR FILL.
 - FILL OPERATIONS MAY BE CARRIED ON SIMULTANEOUSLY AT SOUTH END AT CONTRACTOR'S OPTION.
 - CONSTRUCT WEIR DISCHARGE SYSTEM FOR DREDGING OPERATIONS.
 - FOR ADDITIONAL INFORMATION CONCERNING FILL PLACEMENT, MUCK REMOVAL AND INSPECTION, SEE SPECIFICATIONS. ALSO SEE SHEET C107 FOR GRADATION OF DIKE MATERIAL.



CONSTRUCTION DIKE SECTION B
SCALE: 1" = 20'

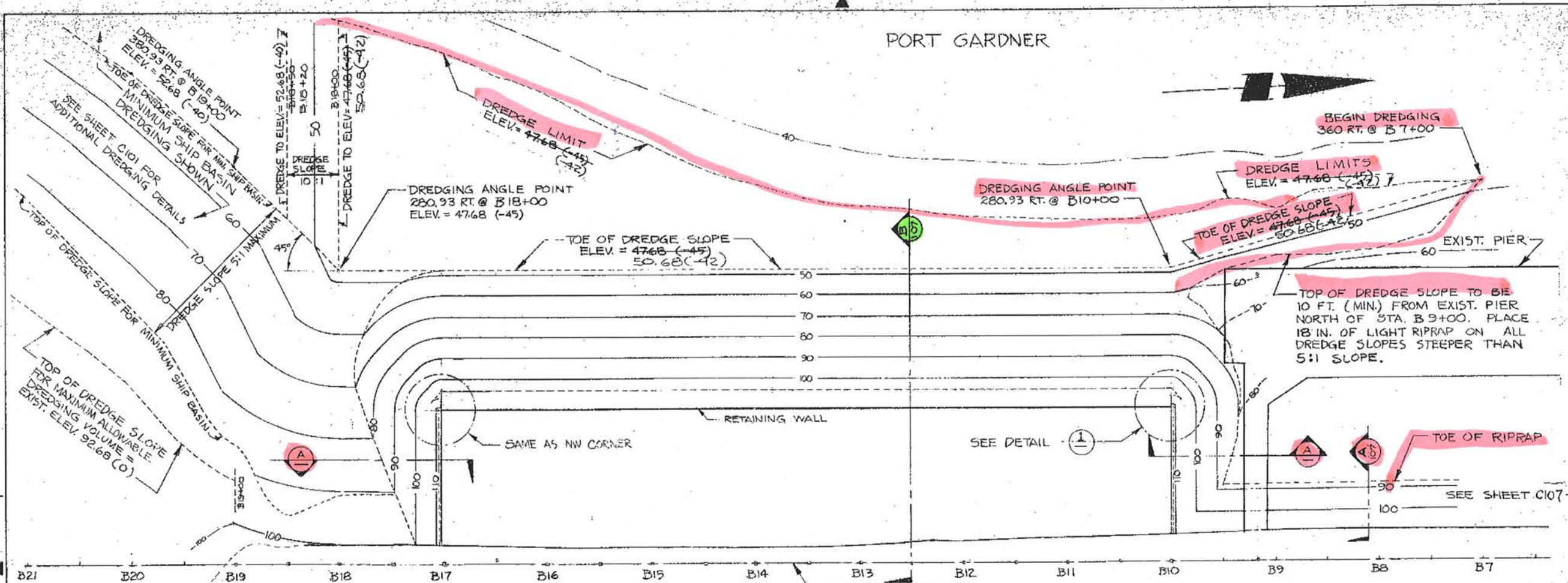


CONSTRUCTION DIKE SECTION A
SCALE: 1" = 50'

CONSTRUCTION DIKE

NO.	DATE	REVISIONS	BY	CHKD BY	APP'D BY
1					
2					
3					
4					
5					

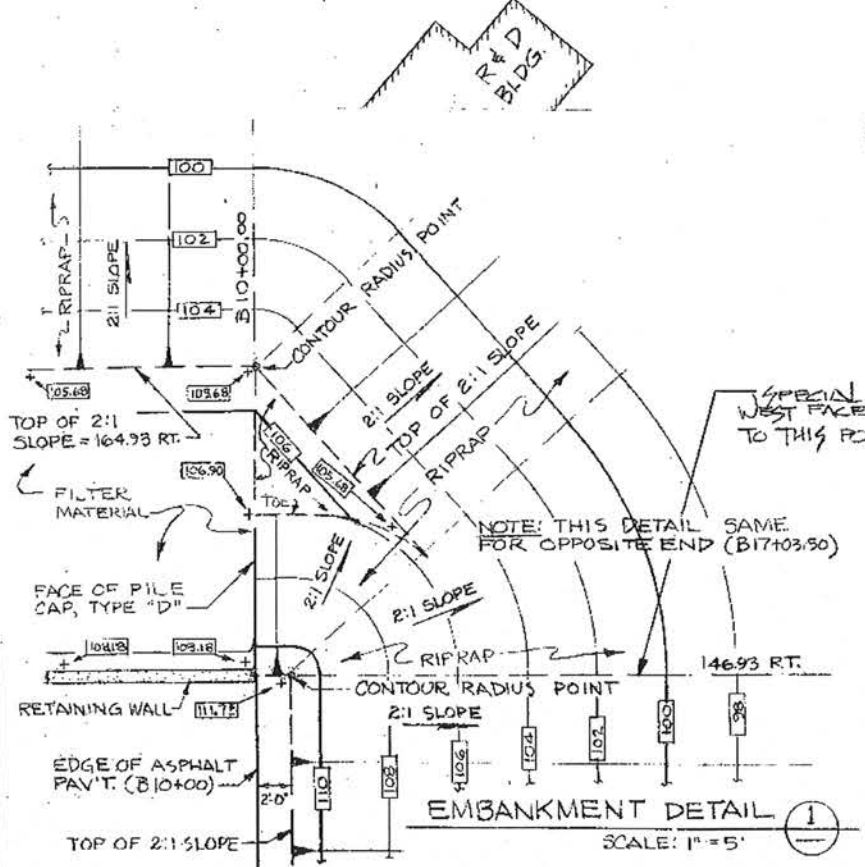
PROJECT TITLE & LOCATION POE MILL CARGO DOCK WAREHOUSE ADDITION EVERETT WASHINGTON	SCALE 1" = 50'	APPROVAL DATE DEC 08 1978
DESIGNER CORPORATE ENGINEERING TACOMA, WASHINGTON	APP. PROJ. ENG. MWH-CAL CHC-335	PROJECT NO. C-105-D



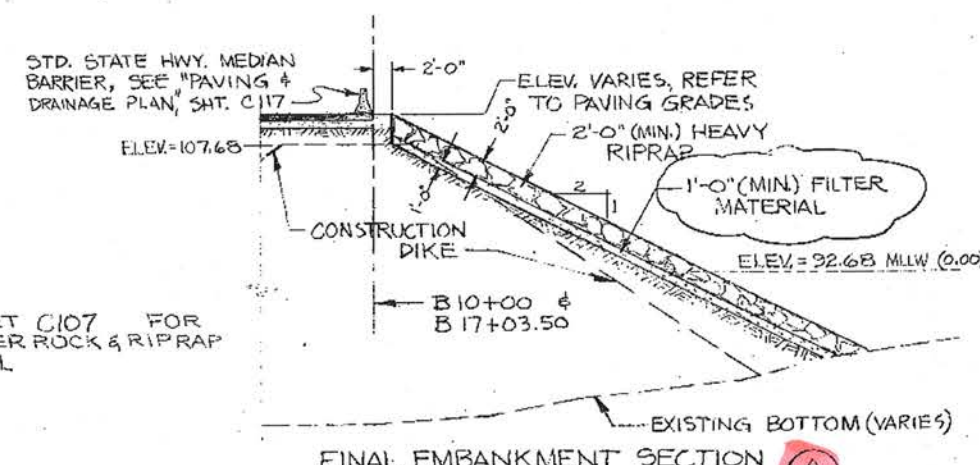
PORT GARDNER



FINAL EMBANKMENT PLAN
SCALE: 1"=50'



EMBANKMENT DETAIL
SCALE: 1"=5'



FINAL EMBANKMENT
SCALE: 1"=10'

CONSTRUCTION SEQUENCE

- 1 AFTER THE CONSTRUCTION DIKE IS FINISHED, AS SHOWN ON SHEET C105, BEGIN HYDRAULIC FILL OPERATIONS (SEE SPECIFICATIONS FOR ADDITIONAL REQUIREMENTS).
- 2 SHAPING OF DIKE TO 2:1 SLOPE MAY BE CARRIED ON SIMULTANEOUSLY WITH FILL OPERATIONS. SLUFFING OF SOIL AT TOE IS EXPECTED & CONTRACTOR TO RESLOPE UNTIL EMBANKMENT IS IN PLACE.
- 3 AFTER EMBANKMENT FILL OPERATIONS ARE COMPLETED, DRIVE TEST PILES IN ACCORDANCE WITH ENGINEER'S INSTRUCTIONS.
- 4 COMPLETE PILE DRIVING OPERATIONS.
- 5 PLACE FILTER MATERIAL, LIGHT AND HEAVY RIPRAP.

NOTE: SEE SPECIFICATIONS FOR ADDITIONAL REQUIREMENTS & INSTRUCTIONS.

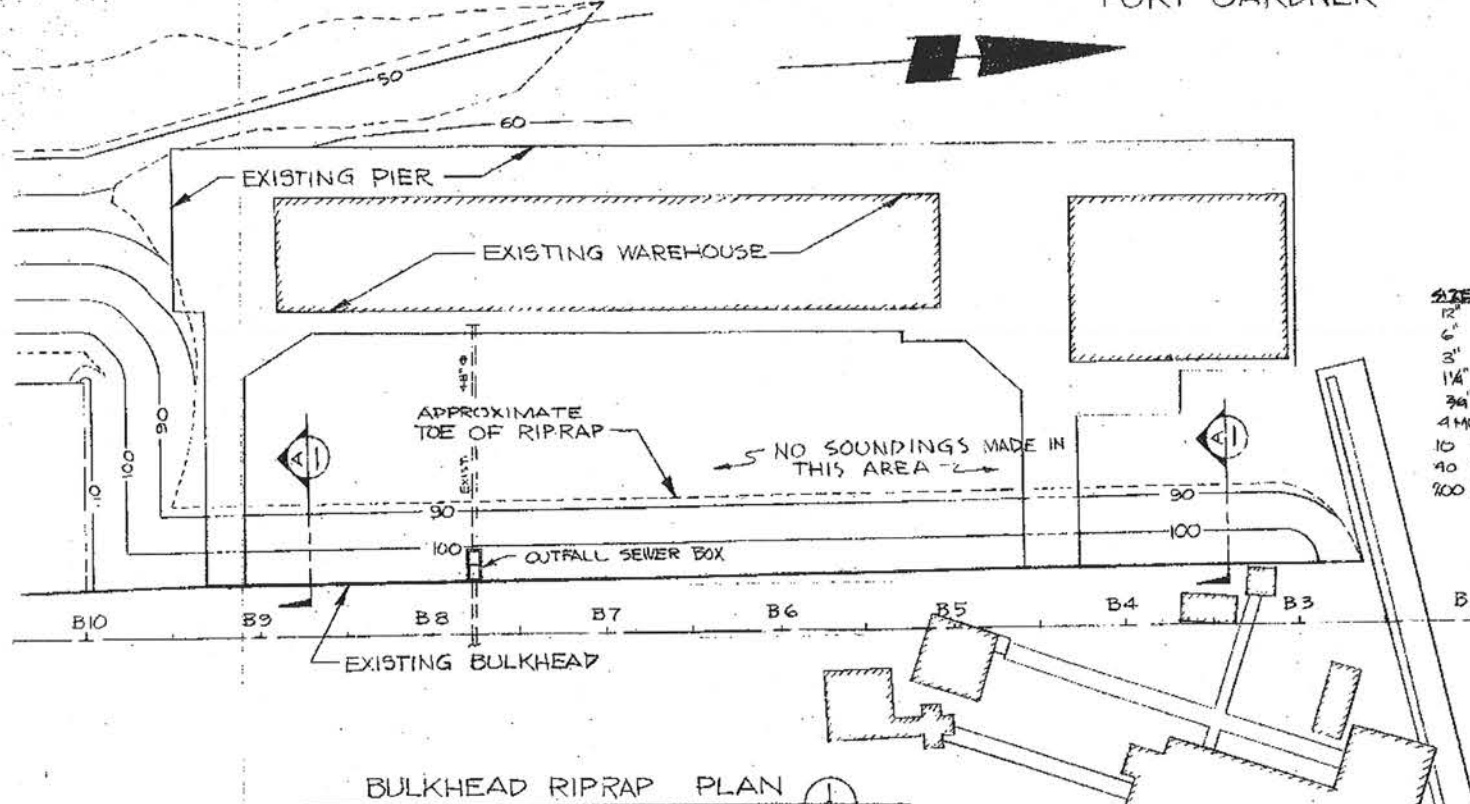
NO.	DATE	BY	CHKD.	APP.	REVISED
1					
2					
3					
4					
5					
6					
7					
8					
9					
10					
11					
12					
13					
14					
15					
16					
17					
18					
19					
20					
21					
22					
23					
24					
25					
26					
27					
28					
29					
30					
31					
32					
33					
34					
35					
36					
37					
38					
39					
40					
41					
42					
43					
44					
45					
46					
47					
48					
49					
50					
51					
52					
53					
54					
55					
56					
57					
58					
59					
60					
61					
62					
63					
64					
65					
66					
67					
68					
69					
70					
71					
72					
73					
74					
75					
76					
77					
78					
79					
80					
81					
82					
83					
84					
85					
86					
87					
88					
89					
90					
91					
92					
93					
94					
95					
96					
97					
98					
99					
100					

PRINTED
DEC 08 1978



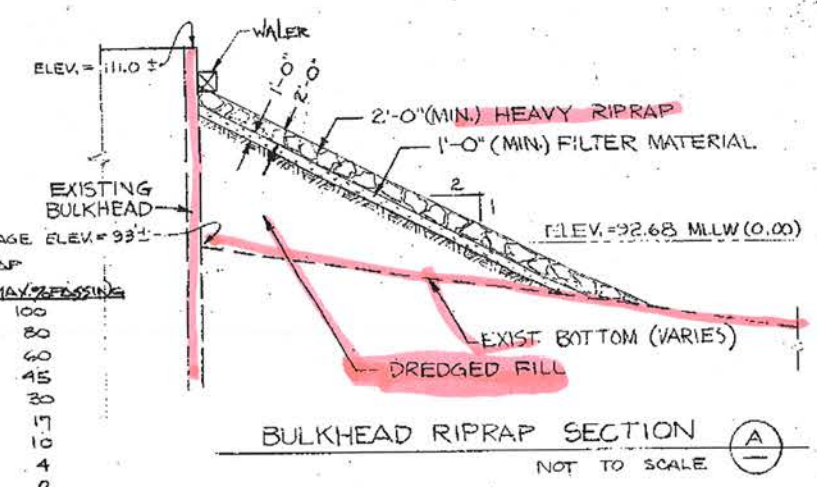
POE MILL A-061742

PORT GARDNER



SPECIAL RIP RAP

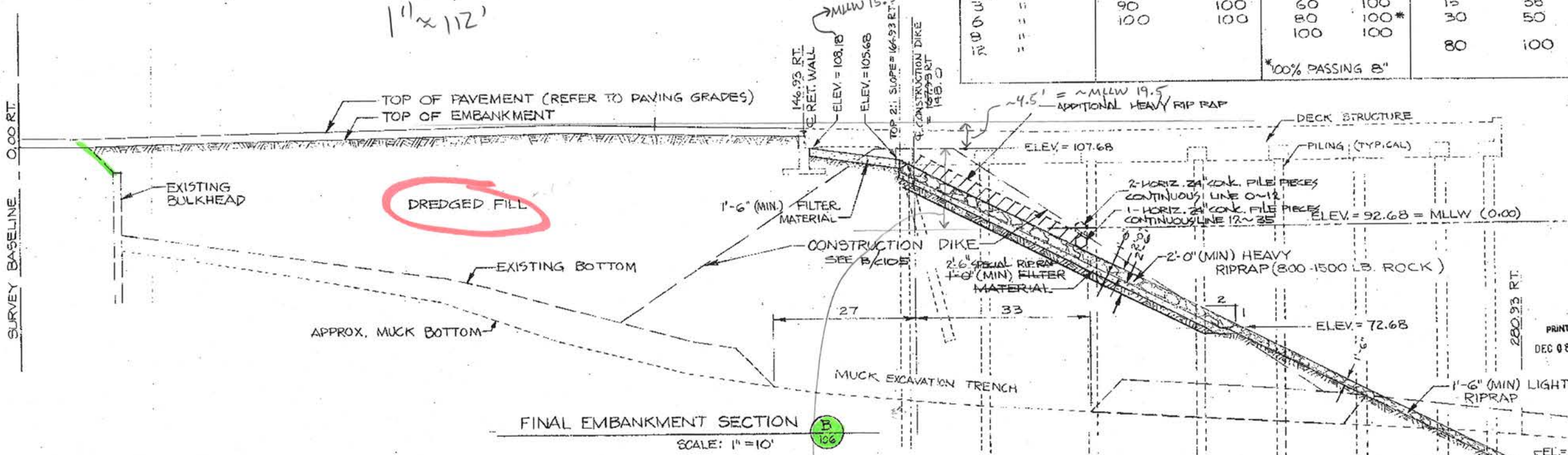
SIZE	MIN. % PASSING	MAX. % PASSING
2 1/2"	65	100
2"	55	80
1 1/2"	35	60
1"	25	45
3/4"	15	30
4 MESH SCREEN	7	17
10"	4	10
30"	0	4
800"	0	2



DIKE, FILTER ROCK & RIPRAP MATERIAL GRADATIONS

SIZE	DIKE MATERIAL		FILTER ROCK		LIGHT RIPRAP	
	MIN. %	MAX. %	MIN. %	MAX. %	MIN. %	MAX. %
#200 U.S. STAND.	0	5	0	2		
#40	0	10	0	5		
#40	0	15	0	10		
#10	7	40	10	30		
#4	20	55	20	40		
3/4 INCH	45	100	35	60	100	50
1/2 "	65	100	50	75	100	50
3/8 "	90	100	60	100	100	50
1/4 "	100	100	80	100*	30	50
1/8 "			100	100	80	100

*100% PASSING 8"



FINAL EMBANKMENT & RIPRAP DETAILS

0.7" = 15'
1" = 21.4'

SEE TOE RIPRAP DETAIL, SHEET S101
NO TOE RIPRAP

REVISIONS

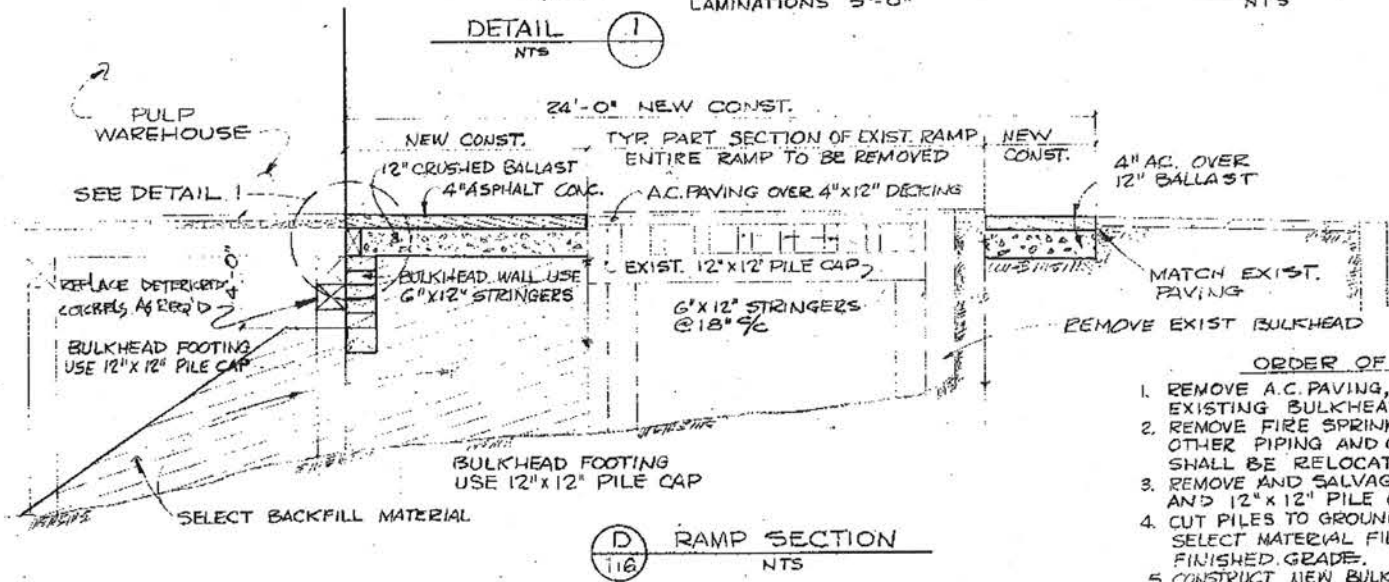
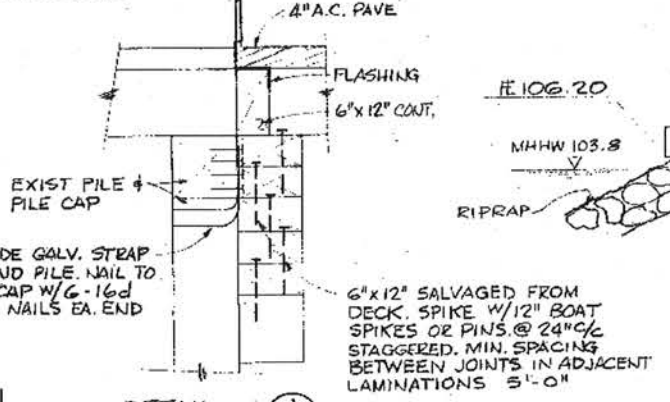
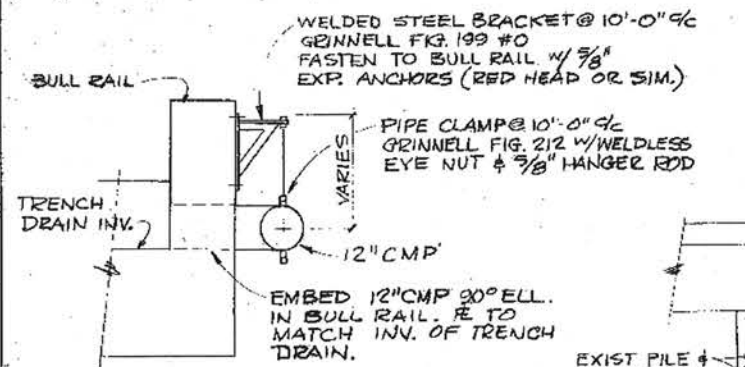
NO.	DATE	BY	REVISION

THIS DRAWING IS THE PROPERTY OF THE EVERETT TRUCK MILL, CARGO DOCK/WAREHOUSE ADDITION PROJECT, EVERETT, WASHINGTON. IT IS TO BE RETURNED UPON REQUEST. THE DESIGN AND REVISIONS ARE THE PROPERTY OF THE TRUCK MILL, CARGO DOCK/WAREHOUSE ADDITION PROJECT, EVERETT, WASHINGTON. NO PART OF THIS DRAWING IS TO BE REPRODUCED OR TRANSMITTED IN ANY FORM OR BY ANY MEANS, WITHOUT WRITTEN PERMISSION.

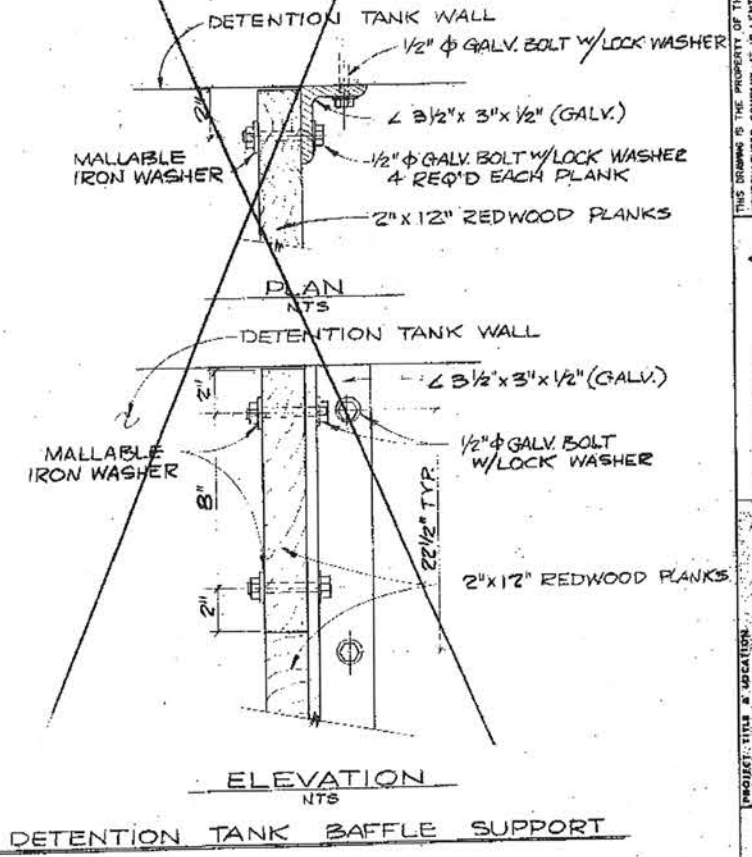
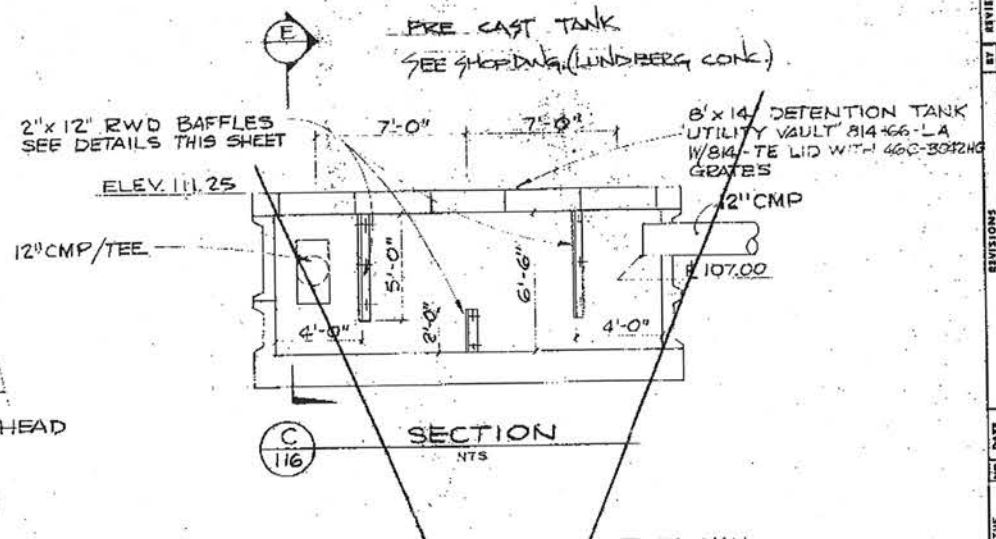
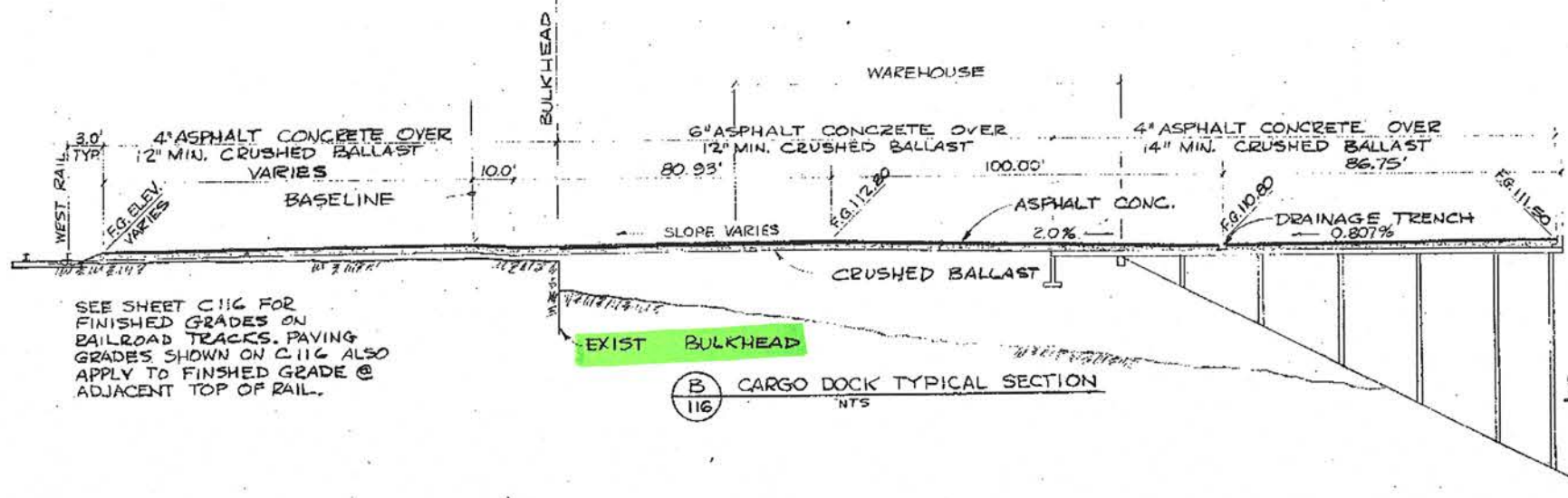
PROJECT: TRUCK MILL, CARGO DOCK/WAREHOUSE ADDITION PROJECT, EVERETT, WASHINGTON
DRAWING NO.: S101
SCALE: 1/4" = 10'

DATE: DEC 8 1978

PROJECT NO.: 150 - C107 - D



- ORDER OF WORK
1. REMOVE A.C. PAVING, 4" x 12" DECKING AND EXISTING BULKHEADS.
 2. REMOVE FIRE SPRINKLER SYSTEM. ALL OTHER PIPING AND OR ELECTRICAL SYSTEMS SHALL BE RELOCATED IF REQUIRED.
 3. REMOVE AND SALVAGE 6" x 12" STRINGERS AND 12" x 12" PILE CAPS.
 4. CUT PILES TO GROUND LINE AND CONSTRUCT SELECT MATERIAL FILL TO 4'-0" BELOW FINISHED GRADE.
 5. CONSTRUCT NEW BULKHEAD WITH SALVAGED MATERIAL, COMPLETE BACKFILL TO GRADE AND PAVE WITH 4" ASPHALT CONC. OVER 12" CRUSHED BALLAST.



PAVING AND UTILITY DETAILS
SCALE: AS SHOWN

PRINTED
DEC 0 8 1978



REVISION	NO.	DATE	BY	CHK'D BY
	1			
	2			
	3			
	4			
	5			

THIS DRAWING IS THE PROPERTY OF THE CONTRACTOR. IT IS LOANED TO THE CONTRACTOR FOR HIS USE ONLY. IT IS TO BE RETURNED UPON REQUEST. THE CONTRACTOR SHALL BE RESPONSIBLE FOR THE PROTECTION AND PRESERVATION OF THIS DRAWING. ANY REPRODUCTION OR USE OF THIS DRAWING WITHOUT WRITTEN PERMISSION IS PROHIBITED.

PROJECT: TITLE & LOCATION
EVERETT, WASH. MILL CARGO DOCK/ WAREHOUSE ADDITION
EVERETT, WASHINGTON

SCALE: AS SHOWN

APPROVAL DATE: 11-15-78

DRAWING NO.: 8809-521

PROJECT: POE MILL A-061752

BRANCH DRAWING NO.: 116

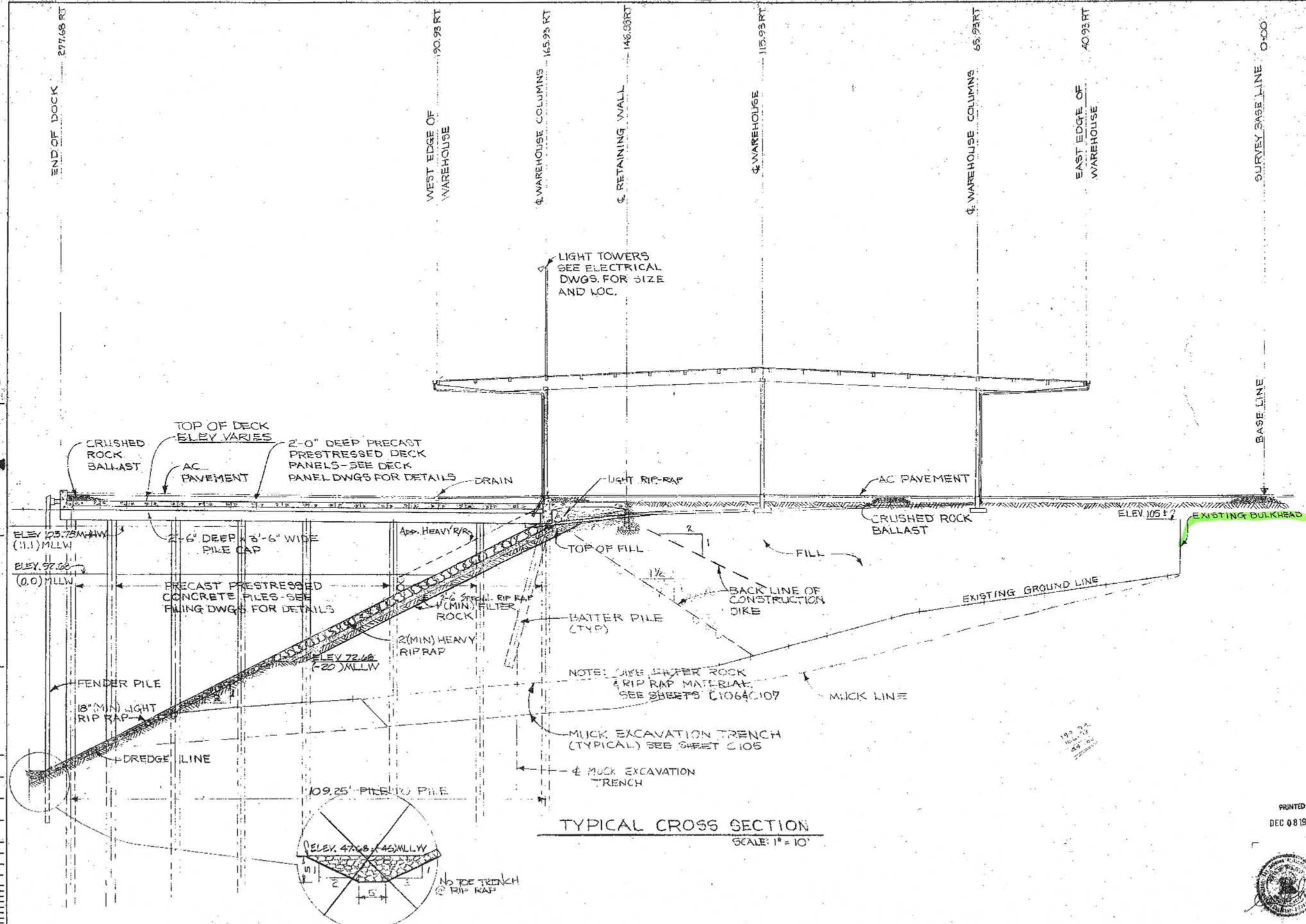
APP. NO.: 116

APP. NAME: T. WASHINGTON

DATE: 11-15-78

SCALE: AS SHOWN

PROJECT: POE MILL A-061752



TYPICAL CROSS SECTION
SCALE: 1" = 10'

PRINTED
DEC 08 1978



PROJECT TITLE EVERETT MILL CARDO DOCK / WAREHOUSE ADDITION EVERETT, WASHINGTON	SCALE 1" = 10'	DATE 12/8/78	PROJECT NO. 10000
DESIGNED BY 8809 - 120 - S101 - D	CHECKED BY	APPROVED BY	DATE
THIS DRAWING IS THE PROPERTY OF THE ENGINEERING COMPANY. IT IS LOANED TO BE RETURNED UPON REQUEST. THE CONTENTS AND IDEAS SHOWN HEREON ARE THE PROPERTY OF THE ENGINEERING COMPANY AND SHALL NOT BE USED, DISCLOSED TO OTHERS, OR COPIED, IN WHOLE OR IN PART, WITHOUT WRITTEN PERMISSION.			
REVISIONS	DATE	BY	REASON