



Geotechnical Engineering
Environmental Engineering
Construction Material Testing
Subsurface Exploration
Special Inspection

Proudly serving the Inland Northwest for since 1976

David E. Orvis
Lincoln County
27234 SR 25N
Davenport, WA 99122

April 19, 2023

Project Number X09032

PROJECT: South Wilbur Petroleum Site
Wilbur, WA

SUBJECT: Results of Groundwater Monitoring for 2023

Dear Mr. Orvis,

This report presents the results of annual groundwater sampling and chemical analysis. A site plan, field parameters, laboratory summary and laboratory report with QA/QC data & Chain of Custody are attached to this report.

We collected water samples from the monitoring wells on March 31, 2023. The groundwater levels were elevated. Measurements obtained ranged from 1.01 ft to 2.4 ft higher than the previous year's round of sampling.

Prior to the sampling event, the field equipment was calibrated using standard calibration solutions. The equipment used for measuring field parameters was a Aqua Troll 600 multi-meter. Field parameters were monitored while purging the wells until stable and sampled upon stabilization under low flow conditions using a peristaltic pump.

The water samples were placed in appropriate containers provided by the laboratory and transported on ice under Chain of Custody to Anatek Labs in Spokane, Washington. We requested that Anatek Labs analyze the samples for gasoline, diesel and oil range petroleum hydrocarbons, and BTEX (Benzene, Toluene, Ethylbenzene and total Xylenes) as agreed upon by the WSDOE for a more limited monitoring scope. A summary of the analysis is provided below:

- MW-1: Gasoline range petroleum concentrations are elevated above the cleanup level. Diesel and heavy oil range petroleum hydrocarbons were not detected. Other variables remain below clean-up levels.
- MW-2: Gasoline range petroleum levels were higher than the previous year and Benzene concentrations remain above clean-up requirements. Diesel range and heavy oil range petroleum hydrocarbons were not detected. Other variables analyzed remain below cleanup standards.

1101 North Fancher Rd.
Spokane Valley, WA 99212
Tel: 509.535.8841
Fax: 509.535.9589

www.budingerinc.com

- MW-3: Gasoline range petroleum concentrations were found to be below clean-up concentrations. BTEX concentrations were at low levels. Diesel range and heavy oil range petroleum hydrocarbons were not detected.
- MW-4: Gasoline range petroleum concentrations remain above clean-up levels. Benzene is above clean-up levels, while diesel range and heavy oil range petroleum hydrocarbons were not detected. Other variables analyzed remain below cleanup standards.
- MW-6: Gasoline range petroleum concentrations increased from the previous sample date. Benzene remains above clean-up levels. Diesel range and heavy oil range petroleum hydrocarbons were not detected. Other variables analyzed remain below cleanup standards.
- MW-9: Petroleum constituents were not detected. MW-9 has historically been free of contamination and is used mainly as a background monitoring well.
- MW-10: This monitoring well did not have significant changes since the last sampling event. BTEX concentrations remain below clean-up levels; diesel range and heavy oil range petroleum hydrocarbons were not detected.

If you have any questions regarding this report, please feel free to contact us.

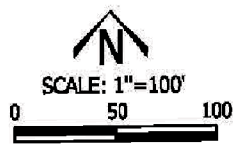
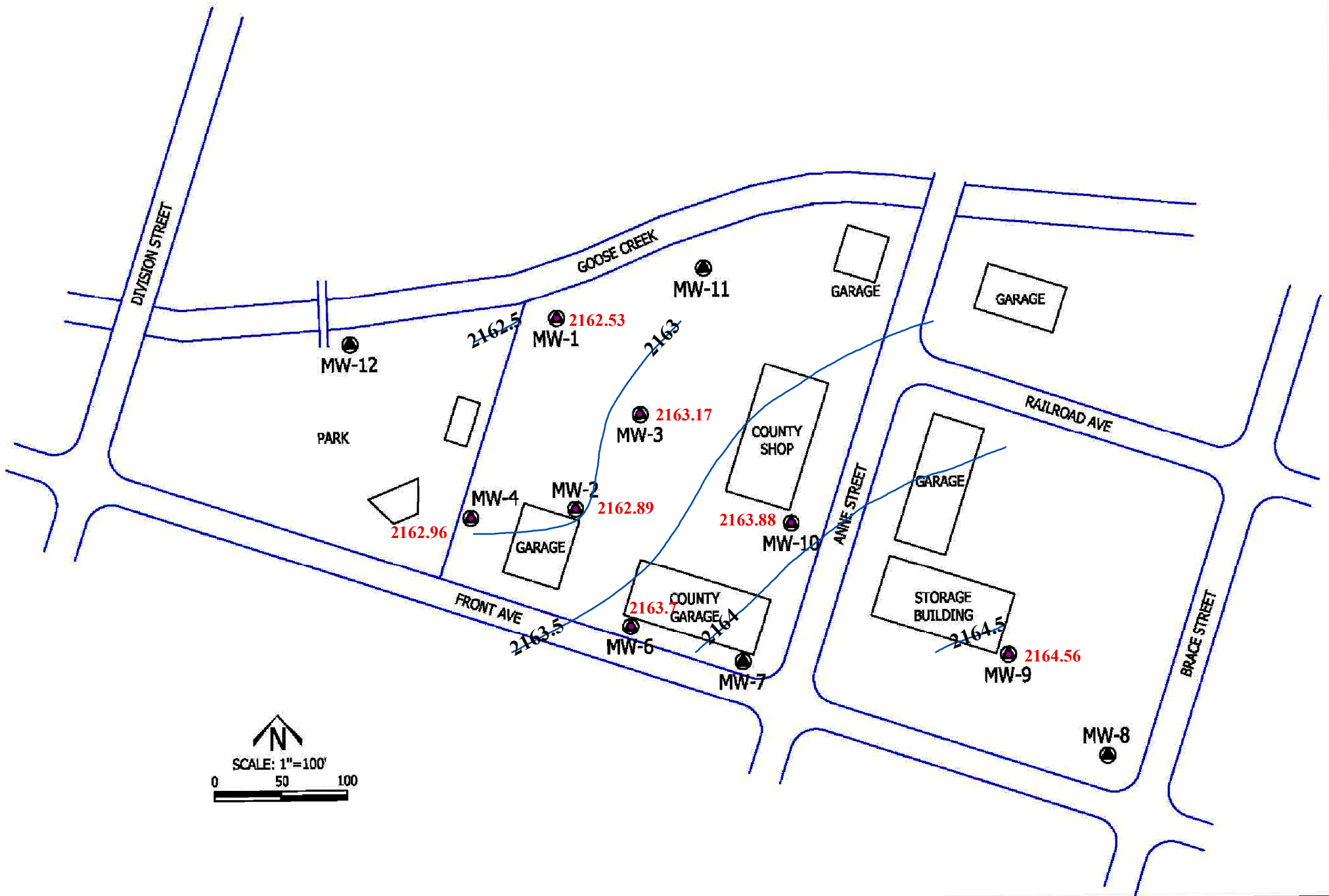
Respectfully Submitted:
BUDINGER & ASSOCIATES



Travis S. Stephens
Environmental Geologist



Stephen D. Burchett, PE
Environmental Engineer




 Budinger & Associates	SITE PLAN	FIGURE 1
	S WILBUR PETROLEUM SITE WILBUR, WASHINGTON	
	PROJECT NUMBER X09032 DATE: 4/2010	

Table 4
Summary of Petroleum Results

Well Number	Date Sampled	GRPH (µg/L)	Benzene (µg/L)	Toluene (µg/L)	Ethyl-benzene (µg/L)	Total Xylenes (µg/L)	DRPH (µg/L)	ORPH (µg/L)
Cleanup Level		800	5.00	1000	700	1000	500	500
MW-1	4/29/05	302	<0.5	<2.0	<1.0	<1.5	<250	<500
NT-Dry	8/10/05	NT	NT	NT	NT	NT	NT	NT
	12/19/05	<100	<0.5	<2.0	<1.0	<1.5	<250	<500
	4/27/06	6000	120	29.5	141	211	901	<500
	9/29/06	963	16.2	<2.0	29.2	6.56	349	<500
	12/19/06	478	2.81	<2.0	8.02	3.29	<250	<500
	3/19/07	150000	2170	615	3860	4720	1000	<500
	6/26/07	819	27.6	<2.0	31.2	13.0	<250	<500
	11/2/07	333	<0.5	<2.0	2.44	3.46	<250	<500
	3/27/08	1140	12.9	2.30	31.8	11.3	650	<500
	Duplicate	1430	14.8	2.73	34.2	30.9	680	<500
	6/4/08	1240	19.7	3.77	25.0	8.63	921	<472
NT-Dry	9/12/08	NT	NT	NT	NT	NT	NT	NT
	12/3/08	132	<0.5	<2.0	<1.0	<1.5	<236	<472
	3/25/09	<500	<1.0	<1.0	1.3	<2.0	<100	<500
	6/26/09	<500	<1.0	<1.0	<1.0	<2.0	<100	<500
	9/29/09	535	<1.0	<1.0	<1.0	<2.0	164	<500
	12/10/09	<500	<1.0	<1.0	<1.0	<2.0	<100	<500
	3/24/10	301	<1.0	<1.0	<1.0	1.25	119	<500
	6/17/10	<100	<1.0	<1.0	<1.0	<2.0	<100	<500
	9/14/10	314	<1.0	<1.0	2.14	1.89	<100	<500
	12/7/10	<100	<1.0	<1.0	<1.0	<2.0	<100	<500
	3/24/11	483	<1.0	1.16	6.20	4.89	161	<500
	6/21/11	1320	8.23	2.42	24.8	16.5	182	<500
	11/22/11	176	<1.0	<1.0	<1.0	<2.0	<100	<500
	12/28/11	185	<1.0	<1.0	<1.0	<2.0	<100	<500
	3/16/12	167	<1.0	<1.0	<1.0	<3.0	<1.0	<500
	6/28/12	268	<1.0	<1.0	<1.0	<3.0	<0.1	<500
NT-Dry	9/28/12	NT	NT	NT	NT	NT	NT	NT
	1/10/13	<100	<1.0	<1.0	<1.0	<3.0	<100	<500
	4/1/13	128	<1.0	1.11	<1.0	<3.0	<100	<500
	6/12/13	<100	<1.0	<1.0	<1.0	<2.0	<100	<500
	10/16/13	NT	<1.0	<1.0	<1.0	<1.0	<100	<500
	12/17/13	<100	<0.5	<0.5	<0.5	<1.5	<100	<500
	Duplicate	<100	<0.5	<0.5	<0.5	<1.5	<100	<500
	3/18/14	1930	<0.5	<0.5	<0.5	<1.5	<100	<500
	6/4/14	195	<0.5	<0.5	<0.5	<1.0	<100	<500
NT-Dry	9/22/14	NT	NT	NT	NT	NT	NT	NT
	12/3/14	126	<0.5	<0.5	<0.5	<1.0	<100	<500
	3/18/15	2230	0.95	1.38	26.2	29.04	<100	<500
	6/9/15	1030	2.4	<0.5	12.6	4.9	<100	<500
	4/16/16	8220	15.0	4.5	101.0	94.5	<100	<500
	4/19/17	7580	5.4	2.9	77.0	55.0	<100	<500
	3/14/18	6890	<1.0	<1.0	<1.0	<2.0	<100	<500
	4/12/19	3970	2.70	1.94	<1.0	45.8	<100	<500
	3/13/20	2580	2.15	1.22	4.40	5.33	<100	<500
	3/4/21	668	<1.0	1.08	6.12	2.67	<160	<400
	5/5/22	247	<1.0	<1.0	1.83	<3	<160	<400
Duplicate	5/5/22	266	<1.0	<1.0	1.77	<3	<160	<400
	3/31/23	1180	0.750	<0.500	1.69	2.67	<160	<400

Table 4
Summary of Petroleum Results

Well Number	Date Sampled	GRPH (µg/L)	Benzene (µg/L)	Toluene (µg/L)	Ethyl-benzene (µg/L)	Total Xylenes (µg/L)	DRPH (µg/L)	ORPH (µg/L)
Cleanup Level		800	5.00	1000	700	1000	500	500
MW-2	4/29/05	18200	1190	<100	1170	1300	3400	<500
NT-Dry	8/10/05	NT	NT	NT	NT	NT	NT	NT
	12/19/05	11700	1790	421	262	1740	5330	<500
	4/29/06	20400	1380	313	1330	1930	1900	<500
	12/19/06	15000	645	213	1020	1420	5290	539
	3/19/07	15800	861	153	969	1250	4730	1000
	6/26/07	21800	2320	709	1690	2710	4020	<500
	3/28/08	10900	672	128	690	938	4630	<500
NT-Dry	12/3/08	NT	NT	NT	NT	NT	NT	NT
	3/28/09	14200	570	101	717	913	2500	<500
NT-Dry	6/26/09	NT	NT	NT	NT	NT	NT	NT
NT-Dry	9/29/09	NT	NT	NT	NT	NT	NT	NT
	12/10/09	16700	1210	287	1050	1260	<100	<500
	3/24/10	14500	649	102	828	709	3540	<500
	6/16/10	16100	1050	241	1090	1435	823	<500
NT-Dry	9/14/10	NT	NT	NT	NT	NT	NT	NT
	12/8/10	21600	1150	167	1680	2154	<100	1340
	3/23/11	5510	353	68.6	570	488	881	706
	Duplicate	5750	379	74.0	568	530	1690	702
	6/22/11	8130	382	72.6	729	626	616	<500
	11/22/11	1730	73.0	17.0	111	140	<100	<500
	12/28/11	10400	335	52.0	579	514	<100	<500
	3/16/12	13600	587	118	988	1192	408	<500
	6/28/12	13000	413	85.2	712	859	<100	<500
NT-Dry	9/28/12	NT	NT	NT	NT	NT	NT	NT
	1/10/13	19000	572	185	1130	1452	<100	200
	4/2/13	7580	299	50.6	576	526	<100	<500
	6/12/13	15300	560	118	959	1193	428	<500
NT-Dry	10/16/13	NT	NT	NT	NT	NT	NT	NT
	12/17/13	7040	412	94.6	754	1000	4230	676
	3/18/14	8610	272	<25	390	664	634	<500
	6/4/14	3000	176	25.8	59.7	272	<100	<500
NT-Dry	9/22/14	NT	NT	NT	NT	NT	NT	NT
NT-Dry	12/3/14	NT	NT	NT	NT	NT	NT	NT
	12/22/14	9850	189	34.4	316	573	<100	<500
	3/18/15	612	24	2.52	10.6	46.74	857	<500
	6/9/15	1380	100	<10.0	22	104	<100	<500
	4/13/16	500	26	1.5	11	24	<100	<500
	4/19/17	102	6	<1.0	4	5	<100	<500
	3/14/18	340	22.8	2.31	12.5	16.5	<100	<500
	4/12/19	7710	293	37.8	349	678.6	<100	<500
	3/13/20	9130	235	36.5	339	640.5	<100	<500
	3/4/21	1990	128	14.3	158	206.0	<160	<400
	5/5/22	4250	170	25.1	285	296.1	<160	<400
	3/31/23	8500	216	32.5	380	577.5	<160	<400
Duplicate	3/31/23	10100	209	29.6	403	596.9	<160	<400

Table 4
Summary of Petroleum Results

Well Number	Date Sampled	GRPH (µg/L)	Benzene (µg/L)	Toluene (µg/L)	Ethyl-benzene (µg/L)	Total Xylenes (µg/L)	DRPH (µg/L)	ORPH (µg/L)
Cleanup Level		800	5.00	1000	700	1000	500	500
MW-3	4/29/05	4160	88.3	17.7	94.6	141	1760	1010
NT-Dry	8/10/05	NT	NT	NT	NT	NT	NT	NT
	12/19/05	7780	142	23.9	127	368	2360	546
	4/27/06	1290	14.8	3.6	13.7	27.6	329	<500
	12/19/06	5350	109	40.8	201	273	2130	<500
	3/19/07	6670	116	43.1	292	410	2420	502
	3/28/08	2840	47.9	<10.0	140	196	1810	<500
	6/4/08	2970	33.0	<20	152	212	3180	<472
NT-Dry	9/12/08	NT	NT	NT	NT	NT	NT	NT
NT-Dry	12/3/08	NT	NT	NT	NT	NT	NT	NT
	3/25/09	2630	79.2	20.9	164	230	471	<500
NT-Dry	6/26/09	NT	NT	NT	NT	NT	NT	NT
NT-Dry	9/29/09	NT	NT	NT	NT	NT	NT	NT
	12/11/09	7550	87.0	42.5	298	429	3370	<500
	3/25/10	4600	86.6	31.8	278	376	1270	<500
	Duplicate	4880	86.3	32.3	286	393	1330	<500
	6/16/10	3090	29.0	14.9	133	184	454	<500
	Duplicate	3510	25.4	11.1	136	188	460	<500
NT-Dry	9/14/10	NT	NT	NT	NT	NT	NT	NT
	12/8/10	5490	109	23.3	278	391	<100	<500
	Duplicate	8820	168	39.0	447	634	<100	<500
	3/24/11	3600	67.3	14.8	184	270	1210	658
	6/21/11	3980	18.6	7.92	185	266	581	<500
	11/22/11	6030	70.0	18.0	291	379	<100	2940
	12/28/11	8380	142	37.1	468	583	<100	<500
	3/16/12	3500	29.9	8.86	153	176	855	<500
	6/28/12	4000	41.2	9.17	163	152	339	<500
NT-Dry	9/28/12	NT	NT	NT	NT	NT	NT	NT
	1/10/13	7000	116	30.4	369	323	<100	1000
	4/2/13	4250	41.7	10.9	174	107	<100	<500
	6/12/13	5280	37.2	<10	234	96.4	221	<500
NT-Dry	10/16/13	NT	NT	NT	NT	NT	NT	NT
NT-Dry	12/17/13	NT	NT	NT	NT	NT	NT	NT
	3/17/14	3470	28.1	5.38	134	55.0	646	<500
	6/4/14	6740	29.7	<12.5	263	44.4	<100	<500
NT-Dry	9/22/14	NT	NT	NT	NT	NT	NT	NT
NT-Dry	12/3/14	NT	NT	NT	NT	NT	NT	NT
	12/22/14	2960	18.2	<5.0	44.5	33.6	<100	<500
	3/18/15	2540	17.3	4.23	85.0	33.1	504	<500
NT-Dry	6/9/15	NT	NT	NT	NT	NT	NT	NT
	4/13/16	2030	<2.5	<2.5	16.1	9.3	<100	<500
	4/19/17	518	<1.0	<1.0	1.1	<3.0	<100	<500
	3/14/18	926	1.27	1.16	3.27	1.18	<100	<500
	4/12/19	2040	<1.0	2.06	3.70	6.42	<100	<500
	3/13/20	2920	5.09	2.50	11.8	4.06	<100	<500
	3/4/21	2270	<1.0	2.27	15.8	8.52	<160	<400
Duplicate	3/4/21	2400	<1.0	2.44	15.4	9.34	<160	<400
	5/5/22	266	<1.0	<1.0	1.8	<3	<160	<400
	3/31/23	<200	<0.500	<0.500	<0.500	<0.500	<160	<400

Table 4
Summary of Petroleum Results

Well Number	Date Sampled	GRPH (µg/L)	Benzene (µg/L)	Toluene (µg/L)	Ethyl-benzene (µg/L)	Total Xylenes (µg/L)	DRPH (µg/L)	ORPH (µg/L)
Cleanup Level		800	5.00	1000	700	1000	500	500
MW-4	4/29/05	10200	72.1	<10	219	414	1980	<500
	12/19/05	11000	98.6	<10.0	179	887	9150	<500
	4/27/06	633	4.71	<2.0	18.2	38.7	260	<500
	9/29/06	14000	70.5	11.6	453	917	411	<500
	12/19/06	9770	38.5	20.1	205	411	3840	<500
	3/19/07	7140	39.5	5.00	182	427	2690	821
	6/26/07	17200	143	46.2	602	1210	4570	<500
NT-Dry	11/2/07	NT	NT	NT	NT	NT	NT	NT
	3/27/08	6850	69.0	<10	251	548	2540	<500
	6/4/08	13200	59.5	18.1	262	540	3070	<472
NT-Dry	9/12/08	NT	NT	NT	NT	NT	NT	NT
	12/3/08	19100	94.6	11.5	423	857	5300	<472
	Duplicate	17700	90.0	11.8	380	770	5320	<472
	3/25/09	981	3.48	1.41	28.2	57.5	280	<500
	6/26/09	19800	132	31.0	545	1050	5890	<500
NT-Dry	9/29/09	NT	NT	NT	NT	NT	NT	NT
	12/10/09	22100	40.3	19.8	390	730	<100	<500
	3/24/10	7560	14.0	6.05	172	341	1990	<500
	6/16/10	11000	23.5	9.11	210	419	1090	<500
NT-Dry	9/14/10	NT	NT	NT	NT	NT	NT	NT
	12/7/10	4470	<5.0	6.15	24.8	81.5	2620	<500
	3/24/11	3250	9.48	3.04	83.7	158	158	597
	6/22/11	4700	35.4	4.87	114	220	552	<500
	11/22/11	1430	55.3	23.0	286	578	<100	<500
	12/28/11	17300	62.4	11.5	318	638	<100	<500
	3/16/12	<100	<10	<10	<10	<30	<100	<500
	3/16/12	<100	<10	<10	<10	<30	<100	<500
	4/19/12	<100	<1.0	<1.0	<1.0	<2.0	<100	<100
	6/28/12	4000	12.8	3.02	91.0	144	<100	<500
NT-Dry	9/28/12	NT	NT	NT	NT	NT	NT	NT
	1/10/13	202	<1.0	<1.0	1.19	2.31	<100	<500
	4/2/13	2050	6.16	2.58	55.4	56.2	<100	<500
	6/12/13	5360	19.3	2.66	136	130	371	<500
NT-Dry	10/16/13	NT	NT	NT	NT	NT	NT	NT
	12/17/13	7670	24.4	5.37	259	148	4270	583
	3/18/14	1400	5.20	0.97	48.9	8.80	<100	<500
	6/4/14	9840	23.1	5.37	271	32.5	<100	<500
NT-Dry	9/22/14	NT	NT	NT	NT	NT	NT	NT
NT-Dry	12/3/14	NT	NT	NT	NT	NT	NT	NT
	12/22/14	3350	5.21	<5.0	61.6	<10	<100	<500
	3/18/15	4430	8.0	3.32	72.7	11.38	664	<500
	6/9/15	16400	22.9	<10.0	252.0	<31.0	<100	<500
	4/13/16	2250	4.2	<2.5	63.9	<7.5	<100	<500
	4/19/17	10400	26.3	5	181.0	14	<100	<500
	3/14/18	17300	137	<100	506.0	<200	<100	<500
	4/12/19	8870	91.3	11.9	337	46.0	<100	<500
	3/13/20	12800	85.9	11.3	297	42.1	<100	<500
Duplicate	3/13/20	11300	86.2	11.6	306	45.4	<100	<500
	3/4/21	6090	47.1	5.2	260	31.7	<160	<400
	5/5/22	912	3.3	<1.0	6	<3	<160	<400
	3/31/23	3900	12.1	Budget 2.80	Assoc. 2.80	7.10	<160	<400

Table 4
Summary of Petroleum Results

Well Number	Date Sampled	GRPH (µg/L)	Benzene (µg/L)	Toluene (µg/L)	Ethyl-benzene (µg/L)	Total Xylenes (µg/L)	DRPH (µg/L)	ORPH (µg/L)
Cleanup Level		800	5.00	1000	700	1000	500	500
MW-6	4/29/05	25300	2100	1260	763	1210	14400	2430
NT-Dry	8/10/05	NT	NT	NT	NT	NT	NT	NT
	12/19/05	<100	<0.5	<2.0	<1.0	<1.5	7230	514
	4/27/06	15200	759	384	852	1320	2090	<500
NT-Dry	9/29/06	NT	NT	NT	NT	NT	NT	NT
	12/19/06	19300	967	462	1260	1860	4540	566
	3/19/07	15000	954	278	791	1160	15200	563
	6/26/07	13400	659	296	781	1180	3800	<500
	12/13/07	22000	730	290	940	1310	4700	<500
	3/27/08	12600	538	251	682	1130	4190	<500
	6/4/08	16900	459	232	689	1050	3910	<472
	3/28/09	18500	816	120	1040	1440	2500	<500
	Duplicate	19000	836	329	1060	1472	3400	<500
	6/26/09	21000	995	418	1240	1540	5730	<500
NT-Dry	9/29/09	NT	NT	NT	NT	NT	NT	NT
	12/10/09	23900	1080	451	1300	1610	<100	<500
	3/24/10	21100	961	440	1370	1837	4610	<500
	6/16/10	21400	937	406	1230	1704	1030	<500
NT-Dry	9/14/10	NT	NT	NT	NT	NT	NT	NT
	12/7/10	23300	803	260	1490	1963	<100	<500
	3/25/11	22700	848	405	1510	1984	1710	629
	6/22/11	22200	701	306	1350	1785	541	<500
	Duplicate	21800	706	306	1330	1764	755	<500
	11/22/11	24000	538	290	1320	1786	<100	<500
	12/28/11	22500	832	322	1240	1671	<100	<500
	3/16/12	19900	549	224	1160	1493	100	<500
	6/28/12	24600	711	313	1400	1816	<100	<500
NT-Dry	9/28/12	NT	NT	NT	NT	NT	NT	NT
	1/10/13	24000	408	209	1220	1570	<100	<500
	4/2/13	23900	614	223	1210	1587	831	<500
	6/12/13	21900	515	210	1120	1467	736	<500
	Duplicate	19800	333	148	949	1271	703	<500
NT-Dry	10/16/13	NT	NT	NT	NT	NT	NT	NT
	12/17/13	21700	253	106	1000	1218	3630	<500
	3/18/14	23600	541	145	402	1845	<100	<500
	6/4/14	21800	298	91	541	1350	<100	<500
NT-Dry	9/22/14	NT	NT	NT	NT	NT	NT	NT
	12/3/14	17300	121	62.8	255	960	<100	<500
	3/18/15	20500	330	160	292	1093	<100	<500
	6/9/15	14100	278	64.9	84	532	<100	<500
	2/16/16	14300	180	19.9	70	663	NT	NT
	4/13/16	9150	136	14.5	18	723	<100	<500
Duplicate (MW673)	4/13/16	13400	133	<25	<25	591	<100	<500
	4/19/17	5480	93	14.7	81	387	<100	<500
	3/14/18	16100	229	<100	257	229	<100	<500
	4/12/19	10100	129	21.8	266	231.8	<100	<500
Duplicate	4/12/19	11400	141	25.3	274	208.6	<100	<500
	3/13/20	7570	79.3	19.3	131	207.2	<100	<500
	3/4/21	7140	116	27.8	172	378.4	<160	<400
	5/5/22	4640	101	11.1	132	281.3	<160	<400
	3/31/23	8200	141	26.8	220	318.3	<160	<400

Dudinger & Associates, Inc.

Geotechnical & Environmental Engineers
Construction Materials Testing & Special Inspection

Table 4
Summary of Petroleum Results

Well Number	Date Sampled	GRPH (µg/L)	Benzene (µg/L)	Toluene (µg/L)	Ethyl-benzene (µg/L)	Total Xylenes (µg/L)	DRPH (µg/L)	ORPH (µg/L)
Cleanup Level		800	5.00	1000	700	1000	500	500
MW-7	12/1/04	133	8.79	9.50	3.65	9.47	<250	<500
	4/29/05	<100	3.99	2.27	<1.0	0.75	<250	<500
NT-Dry	8/10/05	NT	NT	NT	NT	NT	NT	NT
	12/19/05	<100	<0.5	<2.0	<1.0	0.75	<250	<500
	4/27/06	<100	<0.5	<2.0	<1.0	0.75	<250	<500
NT-Dry	9/29/06	NT	NT	NT	NT	NT	NT	NT
	12/14/06	<100	<0.5	<2.0	<1.0	0.75	2420	8380
	3/19/07	ND	ND	ND	ND	ND	<250	<500
	6/26/07	<100	<0.5	<2.0	<1.0	0.75	<250	<500
NT-Dry	9/27/07	NT	NT	NT	NT	NT	NT	NT
NT-Dry	11/2/07	NT	NT	NT	NT	NT	NT	NT
	4/29/05	NT	NT	NT	NT	NT	NT	NT
	8/10/05	NT	NT	NT	NT	NT	NT	NT
	12/19/05	NT	NT	NT	NT	NT	NT	NT
	4/27/06	<100	<0.5	<2.0	<1.0	<1.5	<250	<500
	9/29/06	NT	NT	NT	NT	NT	NT	NT
	12/14/06	NT	NT	NT	NT	NT	NT	NT
	3/19/07	NT	NT	NT	NT	NT	NT	NT
	6/26/07	NT	NT	NT	NT	NT	NT	NT
	9/27/07	NT	NT	NT	NT	NT	NT	NT
	11/2/07	NT	NT	NT	NT	NT	NT	NT
	12/13/07	NT	NT	NT	NT	NT	NT	NT
	3/27/08	50.0	0.25	1.00	0.50	0.75	125	250
	3/27/08	<100	<0.5	<2.0	<1.0	<1.5	<250	<500
	6/4/08	<100	<0.5	<2.0	<1.0	0.75	274	<472
	Duplicate	<100	<0.5	<2.0	<1.0	<1.5	<236	<472
NT-Dry	9/12/08	NT	NT	NT	NT	NT	NT	NT
	12/3/08	<100	<0.5	<2.0	<1.0	0.75	<236	<472
	3/28/09	<500	2.39	1.86	9.26	14.3	<100	<500
	6/26/09	951	8.43	7.34	36.0	54.6	<100	<500
NT-Dry	9/29/09	NT	NT	NT	NT	NT	NT	NT
	12/11/09	<500	<1.0	<1.0	<1.0	<2.0	<100	<500
	Duplicate	<500	<1.0	<1.0	<1.0	<2.0	<100	<500
	3/24/10	<250	<1.0	<1.0	2.14	2.53	<100	<500
	6/16/10	<100	<1.0	<1.0	<1.0	<2.0	<100	<500
NT-Dry	9/14/10	NT	NT	NT	NT	NT	NT	NT
	12/8/10	<100	<1.0	<1.0	<1.0	<2.0	<100	648
	3/25/11	<100	<1.0	<1.0	<1.0	<2.0	160	671
	6/22/11	<100	<1.0	<1.0	<1.0	<2.0	<100	<500
	11/22/11	<100	<1.0	<1.0	<1.0	<2.0	<100	<500

Table 4
Summary of Petroleum Results

Well Number	Date Sampled	GRPH (µg/L)	Benzene (µg/L)	Toluene (µg/L)	Ethyl-benzene (µg/L)	Total Xylenes (µg/L)	DRPH (µg/L)	ORPH (µg/L)
Cleanup Level		800	5	1000	700	1000	500	500
MW-7 Continued	12/28/11	<100	<1.0	<1.0	<1.0	<2.0	<100	<500
	3/15/12	<100	<10	<10	<10	<30	<100	<500
	4/6/14		<0.5	<0.5	<0.5	<1.0	<100	<500
	6/28/12	<100	<1.0	<1.0	<1.0	<3.0	<100	<500
NT-Dry	9/28/12	NT	NT	NT	NT	NT	NT	NT
	1/10/13	<100	<1.0	<1.0	<1.0	<3.0	<100	<500
	4/1/13	<100	<1.0	<1.0	<1.0	<3.0	<100	<500
	6/12/13	<100	<1.0	<1.0	<1.0	<3.0	<100	<500
NT-Dry	10/16/13	NT	NT	NT	NT	NT	NT	NT
	12/17/13	<100	<0.5	<0.5	<0.5	<1.0	<100	<500
	3/18/14	<100	<0.5	<0.5	<0.5	<1.5	<100	<500
	6/4/14	<100	<0.5	<0.5	<0.5	<1.5	<100	<500
NT-Dry	9/22/14	NT	NT	NT	NT	NT	NT	NT
No DRPH	12/3/14	<100	<0.5	<0.5	<0.5	<1.0	NT	NT
	12/22/14	NT	NT	NT	NT	NT	<100	<500
Duplicate	12/22/14	<100	<0.5	<0.5	<0.5	<1.0	<100	<500
	3/18/15	<100	<0.5	<0.5	<0.5	<1.5	<100	<500
Duplicate	3/18/15	<100	<0.5	<0.5	<0.5	<1.5	<100	<500
	6/9/15	<100	<0.5	<0.5	<0.5	<1.5	<100	<500
	5/9/16	<100	<1.0	<1.0	<1.0	<3.0	<100	<500
	4/19/17	NT	NT	NT	NT	NT	NT	NT
	3/14/18	NT	NT	NT	NT	NT	NT	NT
	4/12/19	NT	NT	NT	NT	NT	NT	NT
	3/13/20	NT	NT	NT	NT	NT	NT	NT
	3/4/21	NT	NT	NT	NT	NT	NT	NT
	5/5/22	NT	NT	NT	NT	NT	NT	NT
	3/31/23	NT	NT	NT	NT	NT	NT	NT

Table 4
Summary of Petroleum Results

Well Number	Date Sampled	GRPH (µg/L)	Benzene (µg/L)	Toluene (µg/L)	Ethyl-benzene (µg/L)	Total Xylenes (µg/L)	DRPH (µg/L)	ORPH (µg/L)
Cleanup Level		800	5.00	1000	700	1000	500	500
MW-8	4/29/05	NT	NT	NT	NT	NT	NT	NT
NT-Dry	8/10/05	NT	NT	NT	NT	NT	NT	NT
NT-Dry	12/19/05	NT	NT	NT	NT	NT	NT	NT
NT-Dry	4/27/06	NT	NT	NT	NT	NT	NT	NT
NT-Dry	9/29/06	NT	NT	NT	NT	NT	NT	NT
	12/14/06	105	<0.5	<2.0	<1.0	<1.5	<250	<500
NT-Dry	3/19/07	NT	NT	NT	NT	NT	NT	NT
NT-Dry	6/26/07	NT	NT	NT	NT	NT	NT	NT
NT-Dry	9/27/07	NT	NT	NT	NT	NT	NT	NT
NT-Dry	11/2/07	NT	NT	NT	NT	NT	NT	NT
	3/27/08	<100	<0.5	<2.0	<1.0	<1.5	<250	<500
NT-Dry	6/4/08	NT	NT	NT	NT	NT	NT	NT
NT-Dry	9/12/08	NT	NT	NT	NT	NT	NT	NT
NT-Dry	12/3/08	NT	NT	NT	NT	NT	NT	NT
NT-Dry	3/28/09	NT	NT	NT	NT	NT	NT	NT
	3/24/11	<100	<1.0	<1.0	<1.0	<2.0	144	702
	6/21/11	<100	<1.0	<1.0	<1.0	<2.0	<100	<500
NT-Dry	11/22/11	NT	NT	NT	NT	NT	NT	NT
NT-Dry	12/28/11	NT	NT	NT	NT	NT	NT	NT
NT-Dry	3/15/12	NT	NT	NT	NT	NT	NT	NT
NT-Dry	6/28/12	NT	NT	NT	NT	NT	NT	NT
NT-Dry	9/28/12	NT	NT	NT	NT	NT	NT	NT
NT-Dry	1/10/13	NT	NT	NT	NT	NT	NT	NT
NT-Dry	4/1/13	NT	NT	NT	NT	NT	NT	NT
NT-Dry	6/12/13	NT	NT	NT	NT	NT	NT	NT
NT-Dry	10/16/13	NT	NT	NT	NT	NT	NT	NT
NT-Dry	12/17/13	NT	NT	NT	NT	NT	NT	NT
NT-Dry	3/17/14	NT	NT	NT	NT	NT	NT	NT
NT-Dry	6/4/14	NT	NT	NT	NT	NT	NT	NT
NT-Dry	9/22/14	NT	NT	NT	NT	NT	NT	NT
NT-Dry	12/3/14	NT	NT	NT	NT	NT	NT	NT
NT-Dry	3/18/15	NT	NT	NT	NT	NT	NT	NT
NT-Dry	6/9/15	NT	NT	NT	NT	NT	NT	NT
	4/13/16	<100	<0.5	<0.5	<0.5	<1.5	<100	<500
	4/19/17	NT	NT	NT	NT	NT	NT	NT
	3/14/18	NT	NT	NT	NT	NT	NT	NT
	4/12/19	NT	NT	NT	NT	NT	NT	NT
	3/13/20	NT	NT	NT	NT	NT	NT	NT
	3/4/21	NT	NT	NT	NT	NT	NT	NT
	5/5/22	NT	NT	NT	NT	NT	NT	NT
	3/31/23	NT	NT	NT	NT	NT	NT	NT

Table 4
Summary of Petroleum Results

Well Number	Date Sampled	GRPH (µg/L)	Benzene (µg/L)	Toluene (µg/L)	Ethyl-benzene (µg/L)	Total Xylenes (µg/L)	DRPH (µg/L)	ORPH (µg/L)
Cleanup Level		800	5.00	1000	700	1000	500	500
MW-9	4/29/05	<100	1.06	<2.0	<1.0	<1.5	<250	<500
NT-Dry	12/19/05	NT	NT	NT	NT	NT	NT	NT
	4/27/06	<100	<0.5	<2.0	<1.0	<1.5	<250	<500
NT-Dry	9/29/06	NT	NT	NT	NT	NT	NT	NT
	12/14/06	<100	<0.5	<2.0	<1.0	<1.5	<250	603
	3/19/07	<100	<0.5	<2.0	<1.0	<1.5	<250	<500
	6/26/07	<100	<0.5	<2.0	<1.0	<1.5	<250	<500
NT-Dry	9/27/07	NT	NT	NT	NT	NT	NT	NT
NT-Dry	11/2/07	NT	NT	NT	NT	NT	NT	NT
	12/13/07	NT	NT	NT	NT	NT	NT	NT
	3/27/08	<100	<0.5	<2.0	<1.0	<1.5	<250	<500
	6/2/08	<100	<0.5	<2.0	<1.0	<1.5	<236	<472
NT-Dry	9/12/08	NT	NT	NT	NT	NT	NT	NT
NT-Dry	12/3/08	NT	NT	NT	NT	NT	NT	NT
	3/25/09	<500	<1.0	<1.0	<1.0	<2.0	<100	<500
	6/26/09	<500	<1.0	<1.0	<1.0	2.27	<100	<500
	Duplicate	<500	<1.0	<1.0	1.6	2.79	<100	<500
NT-Dry	9/29/09	NT	NT	NT	NT	NT	NT	NT
	12/11/09	<500	<1.0	<1.0	<1.0	<2.0	<100	<500
	3/25/10	<250	<1.0	<1.0	<1.0	<2.0	<100	<500
	6/16/10	<100	<1.0	<1.0	<1.0	<2.0	<100	<500
NT-Dry	9/14/10	NT	NT	NT	NT	NT	NT	NT
	12/7/10	<100	<1.0	<1.0	<1.0	<2.0	<100	<500
	3/24/11	<100	<1.0	<1.0	<1.0	<2.0	<100	<500
	6/21/11	<100	<1.0	<1.0	<1.0	<2.0	145	<500
NT-Dry	11/22/11	NT	NT	NT	NT	NT	NT	NT
NT-Dry	12/28/11	NT	NT	NT	NT	NT	NT	NT
	3/15/12	132	<10	<10	<10	-	<100	<500
	6/28/12	<100	<1.0	<1.0	<1.0	<3.0	<100	<500
NT-Dry	9/28/12	NT	NT	NT	NT	NT	NT	NT
NT-Dry	1/10/13	NT	NT	NT	NT	NT	NT	NT
	4/1/13	<100	<1.0	<1.0	<1.0	<3.0	<100	<500
	6/12/13	<100	<1.0	<1.0	<1.0	<3.0	<100	<500
NT-Dry	10/16/13	NT	NT	NT	NT	NT	NT	NT
NT-Dry	12/17/13	NT	NT	NT	NT	NT	NT	NT
	3/18/14	<100	<0.5	<0.5	<0.5	<2.0	<100	<500
	6/4/14	<100	<0.5	<0.5	<0.5	<1.0	<100	<500
NT-Dry	9/22/14	NT	NT	NT	NT	NT	NT	NT
NT-Dry	12/3/14	NT	NT	NT	NT	NT	NT	NT
	12/22/14	<100	<0.5	<0.5	<0.5	<1.0	<100	<500
	3/18/15	<100	<0.5	<0.5	<0.5	<1.5	<100	<500
	6/9/15	<100	<0.5	<0.5	<0.5	<1.5	<100	<500
	4/13/16	<100	<0.5	<0.5	<0.5	<1.5	<100	<500
	4/19/17	<100	<1.0	<1.0	<1.0	<3.0	<100	<500
	3/14/18	<100	<1.0	<1.0	<1.0	<2.0	<100	<500
Duplicate	3/14/18	<100	<1.0	<1.0	<1.0	<2.0	<100	<500
	4/12/19	<100	<1.0	<1.0	<1.0	<3.0	<100	<500
	3/13/20	<100	<1.0	<1.0	<1.0	<3.0	<100	<500
	3/4/21	<100	<1.0	<1.0	<1.0	<3.0	<160	<400
	5/5/22	<100	<1.0	<1.0	<1.0	<3.0	<160	<400
	3/31/23	<200	<0.500	<0.500	<0.500	<1.0	<160	<400

Table 4
Summary of Petroleum Results

Well Number	Date Sampled	GRPH (µg/L)	Benzene (µg/L)	Toluene (µg/L)	Ethyl-benzene (µg/L)	Total Xylenes (µg/L)	DRPH (µg/L)	ORPH (µg/L)
Cleanup Level		800	5.00	1000	700	1000	500	500
MW-10	4/29/05	5790	20.3	<2.0	16.5	42.3	1690	<500
NT-Dry	8/10/05	NT	NT	NT	NT	NT	NT	NT
	12/19/05	5880	38.6	16.9	35.3	86.3	4150	<500
	4/27/06	6000	43.1	14.5	38.2	114	1080	<500
NT-Dry	9/29/06	NT	NT	NT	NT	NT	NT	NT
	12/19/06	7010	34.2	25.8	30.3	86.2	2920	<500
	3/19/07	6900	37.8	16.8	42.0	139	3500	<500
	6/26/07	3220	14.9	6.39	20.2	57.5	2490	<500
NT-Dry	9/27/07	NT	NT	NT	NT	NT	NT	NT
NT-Dry	11/2/07	NT	NT	NT	NT	NT	NT	NT
	3/28/08	2450	5.57	2.48	4.29	12.0	1550	<500
	6/4/08	2410	8.07	3.90	9.58	23.6	1560	<472
NT-Dry	9/12/08	NT	NT	NT	NT	NT	NT	NT
	12/3/08	6240	19.6	12.6	24.5	61.2	2510	<472
	3/25/09	3370	3.61	17.1	18.6	59.1	533	<500
NT-Dry	6/26/09	NT	NT	NT	NT	NT	NT	NT
NT-Dry	9/29/09	NT	NT	NT	NT	NT	NT	NT
	12/11/09	4540	<1.0	<1.0	23.8	71.2	4100	<500
	3/25/10	5100	2.87	<1.0	30.4	114	1210	<500
	6/16/10	3020	<1.0	<1.0	13.1	35.8	897	<500
NT-Dry	9/14/10	NT	NT	NT	NT	NT	NT	NT
	12/7/10	9090	25.4	7.7	231	486	1720	<500
	3/24/11	3260	<1.0	4.0	21.3	72.8	1540	<500
	6/22/11	2380	<1.0	3.3	10.8	55.0	829	<500
	11/22/11	4000	4.35	5.6	17.8	78.4	1450	<500
	12/28/11	5120	<1.0	6.4	26.6	115	1020	<500
	Duplicate	5300	<1.0	6.3	27.3	116	1070	<500
	3/16/12	3230	<1.0	3780	10300	51600	394	<500
	6/28/12	2420	<1.0	2.40	12.1	40.8	357	<500
	9/28/12	2170	<1.0	4.04	8.22	30.6	NT	NT
	4/2/13	5520	<1.0	5.55	22.8	104.5	130	<500
	6/12/13	1900	2.78	<1.0	10.6	26.9	<100	<500
NT-Dry	10/16/13	NT	NT	NT	NT	NT	NT	NT
	12/17/13	3650	<1.0	1.36	16.1	60.0	2200	<500
	3/17/14	3490	<1.0	<0.5	5.17	21.8	311	<500
	6/4/14	3800	<2.5	<2.5	11.8	34.6	<100	<500
NT-Dry	9/22/14	NT	NT	NT	NT	NT	NT	NT
NT-Dry	12/3/14	NT	NT	NT	NT	NT	NT	NT
	12/22/14	4210	<2.5	<2.5	9.16	37.6	<100	<500
	3/18/15	6810	2.86	3.14	20.9	120.4	1890	<500
	6/9/15	1150	<0.5	<0.5	2.20	10.5	<100	<500
Duplicate	6/9/15	2020	<0.5	<0.5	4.56	18.9	<100	<500
	4/13/16	8570	0.74	1.12	26.7	89.9	<100	<500
	4/19/17	7220	<1.0	2.59	12.0	65.6	<100	<500
	3/14/18	10200	1.41	5.67	27.7	71.2	<100	<500
	4/12/19	4410	<1.0	2.64	11.9	34.9	<100	<500
	3/13/20	2640	3.51	2.18	8.96	9.71	<100	<500
	3/4/21	4480	<1.0	2.82	26.3	15.72	<160	<400
	5/5/22	4750	<1.0	11.5	11.8	22.0	<160	<400
	3/31/23	3770	<0.500	<0.500	16.0	6.22	<160	<400

Table 4
Summary of Petroleum Results

Well Number	Date Sampled	GRPH (µg/L)	Benzene (µg/L)	Toluene (µg/L)	Ethyl-benzene (µg/L)	Total Xylenes (µg/L)	DRPH (µg/L)	ORPH (µg/L)
Cleanup Level		800	5.00	1000	700	1000	500	500
MW-11	4/29/05	<100	<0.5	<2.0	<1.0	<1.5	<250	<500
	8/10/05	<100	<0.5	<2.0	<1.0	<1.5	<250	<500
	12/19/05	<100	<0.5	<2.0	<1.0	<1.5	<250	<500
	4/27/06	225	<0.5	<2.0	<1.0	<1.5	<250	<500
	9/29/06	347	<0.5	<2.0	<1.0	2.7	312	<500
	12/19/06	117	<0.5	<2.0	3.9	17.5	<250	<500
	3/19/07	155	<0.5	<2.0	2.0	9.8	253	<500
	6/26/07	223	<0.5	<2.0	1.3	11.5	362	<500
NT-Dry	9/27/07	NT	NT	NT	NT	NT	NT	NT
	11/2/07	<100	<0.5	<2.0	<1.0	1.7	<250	<500
	3/28/08	<100	<0.5	<2.0	<1.0	<1.5	328	<500
	6/4/08	<100	<0.5	<2.0	<1.0	<1.5	383	<472
	9/12/08	<100	<0.5	<2.0	<1.0	<1.5	378	<472
	Duplicate	<100	<0.5	<2.0	<1.0	<1.5	385	<472
	12/3/08	<100	<0.5	<2.0	<1.0	<1.5	<236	<472
	3/25/09	<500	<1.0	<1.0	<1.0	<2.0	<100	<500
NT-Dry	6/26/09	NT	NT	NT	NT	NT	NT	NT
NT-Dry	9/29/09	NT	NT	NT	NT	NT	NT	NT
	12/10/09	<500	<1.0	<1.0	<1.0	<2.0	<100	<500
	3/24/10	<250	<1.0	<1.0	<1.0	<2.0	190	<500
	6/17/10	<100	<1.0	<1.0	<1.0	<2.0	135	<500
	9/14/10	<100	<1.0	<1.0	<1.0	<2.0	268	<500
	Duplicate	<100	<1.0	<1.0	<1.0	<2.0	379	<500
	12/7/10	<100	<1.0	<1.0	<1.0	<2.0	<100	<500
	3/24/11	<100	<1.0	<1.0	<1.0	<2.0	150	668
	6/21/11	139	<1.0	<1.0	1.42	<2.0	745	<500
	11/22/11	<100	<1.0	<1.0	<1.0	<2.0	<100	<500
	Duplicate	<100	<1.0	<1.0	<1.0	<2.0	<100	<500
	12/28/11	<100	<1.0	<1.0	<1.0	<2.0	<100	<500
	3/16/12	<100	<1.0	<1.0	<1.0	<3.0	<100	<500
	9/28/12	<100	<1.0	<1.0	<1.0	<1.0	876	<500
	6/28/12	<100	<1.0	<1.0	<1.0	<3.0	300	<500
	1/10/13	<100	<1.0	<1.0	<1.0	<3.0	<100	<500
	4/1/13	<100	<1.0	<1.0	<1.0	<3.0	155	<500
	6/12/13	<100	<1.0	<1.0	<1.0	<3.0	170	<500
	10/16/13	NT	<1.0	<1.0	<1.0	<1.5	<100	<500
	12/17/13	<100	<0.5	<0.5	<0.5	<1.0	<100	<500
	3/17/14	<100	<0.5	<0.5	<0.5	<1.5	<100	<500
	6/4/14	<100	<0.5	<0.5	<0.5	<1.0	<100	<500
NT-Dry	9/22/14	NT	NT	NT	NT	NT	NT	NT
	12/3/14	<100	<0.5	<0.5	<0.5	<1.0	<100	<500
	3/18/15	<100	<0.5	<0.5	<0.5	<1.5	<100	<500
	6/9/15	<100	<0.5	<0.5	<0.5	<1.5	<100	<500
	4/16/16	<100	<0.5	<0.5	<0.5	<1.5	<100	<500
	4/19/17	NT	NT	NT	NT	NT	NT	NT
	3/14/18	NT	NT	NT	NT	NT	NT	NT
	4/12/19	NT	NT	NT	NT	NT	NT	NT
	3/13/20	NT	NT	NT	NT	NT	NT	NT
	3/4/21	NT	NT	NT	NT	NT	NT	NT
	5/5/22	NT	NT	NT	NT	NT	NT	NT
	3/31/23	NT	NT	NT	NT	NT	NT	NT

Dudinger & Associates, Inc.

Table 4
Summary of Petroleum Results

Well Number	Date Sampled	GRPH (µg/L)	Benzene (µg/L)	Toluene (µg/L)	Ethyl-benzene (µg/L)	Total Xylenes (µg/L)	DRPH (µg/L)	ORPH (µg/L)
Cleanup Level		800	5	1000	700	1000	500	500
MW-12	4/29/05	<100	<0.5	<2.0	<1.0	<1.5	<250	<500
NT-Dry	8/10/05	NT	NT	NT	NT	NT	NT	NT
	12/19/05	<100	<0.5	<2.0	<1.0	<1.5	<250	<500
	4/27/06	195	7.55	<2.0	<1.0	<1.5	<250	<500
NT-Dry	9/29/06	NT	NT	NT	NT	NT	NT	NT
	12/19/06	<100	<0.5	<2.0	<1.0	<1.5	<250	<500
	3/19/07	<100	<0.5	<2.0	<1.0	<1.5	<250	<500
	6/26/07	<100	<0.5	<2.0	<1.0	<1.5	<250	<500
NT-Dry	9/27/07	NT	NT	NT	NT	NT	NT	NT
	11/2/07	<100	<0.5	<2.0	<1.0	<1.5	<250	<500
	3/28/08	<100	3.8	<2.0	<1.0	<1.5	<250	<500
	6/4/08	<100	<0.5	<2.0	<1.0	<1.5	<236	<472
NT-Dry	9/12/08	NT	NT	NT	NT	NT	NT	NT
	12/3/08	<100	<0.5	<2.0	<1.0	<1.5	<236	<472
	3/25/09	<500	<1.0	<1.0	<1.0	<2.0	<100	<500
	7/16/09	<500	<1.0	<1.0	<1.0	<2.0	104	<500
NT-Dry	9/29/09	NT	NT	NT	NT	NT	NT	NT
	12/11/09	<500	<1.0	<1.0	<1.0	<2.0	<100	<500
	3/24/10	<250	<1.0	<1.0	<1.0	<2.0	<100	<500
	6/17/10	<100	<1.0	<1.0	<1.0	<2.0	<100	<500
NT-Dry	9/14/10	NT	NT	NT	NT	NT	NT	NT
obstructed	12/7/10	NT	NT	NT	NT	NT	NT	NT
	3/25/11	<100	2.51	<1.0	1.10	<2.0	<100	<500
	6/21/11	<100	<1.0	<1.0	<1.0	<2.0	<100	<500
	11/22/11	<100	<1.0	<1.0	<1.0	<2.0	<100	<500
	12/28/11	<100	<1.0	<1.0	<1.0	<2.0	<100	<500
	3/15/12	<100	<1.0	<1.0	<1.0	<3.0	<100	<500
	6/28/12	<100	<1.0	<1.0	<1.0	<3.0	<100	<500
	9/28/12	<100	<1.0	<1.0	<1.0	<1.0	NT	NT
	1/10/13	<100	<1.0	<1.0	<1.0	<3.0	<100	<500
	4/1/13	<100	<1.0	<1.0	<1.0	<3.0	<100	<500
	6/12/13	<100	<1.0	<1.0	<1.0	<3.0	<100	<500
NT-Dry	10/16/13	NT	NT	NT	NT	NT	NT	NT
	12/17/13	<100	<0.5	<0.5	<0.5	<1.0	<100	<500
	3/18/14	<100	<0.5	<0.5	<0.5	<1.5	<100	<500
	6/4/14	<100	<0.5	<0.5	<0.5	<1.5	<100	<500
NT-Dry	9/22/14	NT	NT	NT	NT	NT	NT	NT
NT-Dry	12/3/14	NT	NT	NT	NT	NT	NT	NT
	12/22/14	<100	<0.5	<0.5	<0.5	<1.0	<100	<500
	3/18/15	105.0	5.92	<0.5	<0.5	<1.5	<100	<500
	6/9/15	<100	<0.5	<0.5	<0.5	<1.5	<100	<500
	4/13/16	<100	1.3	<0.5	<0.5	<1.5	<100	<500
	4/19/17	NT	NT	NT	NT	NT	NT	NT
	3/14/18	NT	NT	NT	NT	NT	NT	NT
	4/12/19	NT	NT	NT	NT	NT	NT	NT
	3/13/20	NT	NT	NT	NT	NT	NT	NT
	3/4/21	NT	NT	NT	NT	NT	NT	NT
	5/5/22	NT	NT	NT	NT	NT	NT	NT
	3/31/23	NT	NT	NT	NT	NT	NT	NT

Anatek Labs, Inc.

1282 Alturas Drive - Moscow, ID 83843 - (208) 883-2839 - email moscow@anateklabs.com
504 E Sprague Ste. D - Spokane, WA 99202 - (509) 838-3999 - email spokane@anateklabs.com

Client: Budinger & Associates, Inc.
Address: 1101 N. Fancher Road
Spokane Valley, WA 99212
Attn: Steve Burchett

Work Order: WDC1497
Project: X09032
Reported: 4/18/2023 14:48

Analytical Results Report

Sample Location: MW-9
Lab/Sample Number: WDC1497-01 **Collect Date:** 03/31/23 09:00
Date Received: 03/31/23 14:34 **Collected By:** Travis Stephens
Matrix: Groundwater

Analyte	Result	Units	PQL	Analyzed	Analyst	Method	Qualifier
Hydrocarbons							
Diesel	ND	mg/L	0.160	4/7/23 20:48	BAN	NWTPH-Dx	* M2
Lube Oil	ND	mg/L	0.400	4/7/23 20:48	BAN	NWTPH-Dx	*
Mineral Oil	ND	mg/L	0.160	4/7/23 20:48	BAN	NWTPH-Dx	*

<i>Surrogate: n-Hexacosane</i>	<i>58.7%</i>		<i>50-150</i>	<i>4/7/23 20:48</i>	<i>BAN</i>	<i>NWTPH-Dx</i>	
Volatiles							
Benzene	ND	ug/L	0.500	4/11/23 16:36	BKP	EPA 8260D	
Ethylbenzene	ND	ug/L	0.500	4/11/23 16:36	BKP	EPA 8260D	
m+p-Xylene	ND	ug/L	0.500	4/11/23 16:36	BKP	EPA 8260D	
o-Xylene	ND	ug/L	0.500	4/11/23 16:36	BKP	EPA 8260D	
Toluene	ND	ug/L	0.500	4/11/23 16:36	BKP	EPA 8260D	

<i>Surrogate: 1,2-Dichlorobenzene-d4</i>	<i>100%</i>		<i>70-130</i>	<i>4/11/23 16:36</i>	<i>BKP</i>	<i>EPA 8260D</i>	

<i>Surrogate: 4-Bromofluorobenzene</i>	<i>104%</i>		<i>70-130</i>	<i>4/11/23 16:36</i>	<i>BKP</i>	<i>EPA 8260D</i>	

<i>Surrogate: Toluene-d8</i>	<i>104%</i>		<i>70-130</i>	<i>4/11/23 16:36</i>	<i>BKP</i>	<i>EPA 8260D</i>	
Gasoline	ND	mg/L	0.200	4/11/23 16:36	BKP	EPA 8015D	*

<i>Surrogate: 4-Bromofluorobenzene</i>	<i>114%</i>		<i>70-130</i>	<i>4/11/23 16:36</i>	<i>BKP</i>	<i>EPA 8015D</i>	

Anatek Labs, Inc.

1282 Alturas Drive - Moscow, ID 83843 - (208) 883-2839 - email moscow@anateklabs.com
504 E Sprague Ste. D - Spokane, WA 99202 - (509) 838-3999 - email spokane@anateklabs.com

Analytical Results Report

(Continued)

Sample Location: MW-6
Lab/Sample Number: WDC1497-02 Collect Date: 03/31/23 09:41
Date Received: 03/31/23 14:34 Collected By: Travis Stephens
Matrix: Groundwater

Analyte	Result	Units	PQL	Analyzed	Analyst	Method	Qualifier
Hydrocarbons							
Diesel	ND	mg/L	0.160	4/7/23 21:43	BAN	NWTPH-Dx	* M2
Lube Oil	ND	mg/L	0.400	4/7/23 21:43	BAN	NWTPH-Dx	*
Mineral Oil	ND	mg/L	0.160	4/7/23 21:43	BAN	NWTPH-Dx	*

<i>Surrogate: n-Hexacosane</i>	<i>76.7%</i>		<i>50-150</i>	<i>4/7/23 21:43</i>	<i>BAN</i>	<i>NWTPH-Dx</i>	
Volatiles							
Benzene	141	ug/L	5.00	4/11/23 17:06	BKP	EPA 8260D	
Ethylbenzene	220	ug/L	5.00	4/11/23 17:06	BKP	EPA 8260D	
m+p-Xylene	305	ug/L	5.00	4/11/23 17:06	BKP	EPA 8260D	
o-Xylene	13.3	ug/L	5.00	4/11/23 17:06	BKP	EPA 8260D	
Toluene	26.8	ug/L	5.00	4/11/23 17:06	BKP	EPA 8260D	

<i>Surrogate: 1,2-Dichlorobenzene-d4</i>	<i>100%</i>		<i>70-130</i>	<i>4/11/23 17:06</i>	<i>BKP</i>	<i>EPA 8260D</i>	

<i>Surrogate: 4-Bromofluorobenzene</i>	<i>104%</i>		<i>70-130</i>	<i>4/11/23 17:06</i>	<i>BKP</i>	<i>EPA 8260D</i>	

<i>Surrogate: Toluene-d8</i>	<i>103%</i>		<i>70-130</i>	<i>4/11/23 17:06</i>	<i>BKP</i>	<i>EPA 8260D</i>	
Gasoline	8.20	mg/L	2.00	4/11/23 17:06	BKP	EPA 8015D	*

<i>Surrogate: 4-Bromofluorobenzene</i>	<i>112%</i>		<i>70-130</i>	<i>4/11/23 17:06</i>	<i>BKP</i>	<i>EPA 8015D</i>	

Anatek Labs, Inc.

1282 Alturas Drive - Moscow, ID 83843 - (208) 883-2839 - email moscow@anateklabs.com
 504 E Sprague Ste. D - Spokane, WA 99202 - (509) 838-3999 - email spokane@anateklabs.com

Analytical Results Report

(Continued)

Sample Location: MW-4
 Lab/Sample Number: WDC1497-03 Collect Date: 03/31/23 10:18
 Date Received: 03/31/23 14:34 Collected By: Travis Stephens
 Matrix: Groundwater

Analyte	Result	Units	PQL	Analyzed	Analyst	Method	Qualifier
Hydrocarbons							
Diesel	ND	mg/L	0.160	4/7/23 22:39	BAN	NWTPH-Dx	* M2
Lube Oil	ND	mg/L	0.400	4/7/23 22:39	BAN	NWTPH-Dx	*
Mineral Oil	ND	mg/L	0.160	4/7/23 22:39	BAN	NWTPH-Dx	*
<i>Surrogate: n-Hexacosane</i>	<i>71.1%</i>		<i>50-150</i>	<i>4/7/23 22:39</i>	<i>BAN</i>	<i>NWTPH-Dx</i>	
Volatiles							
Benzene	12.1	ug/L	2.50	4/12/23 16:54	BKP	EPA 8260D	
Ethylbenzene	87.5	ug/L	2.50	4/12/23 16:54	BKP	EPA 8260D	
m+p-Xylene	7.10	ug/L	2.50	4/12/23 16:54	BKP	EPA 8260D	
o-Xylene	ND	ug/L	2.50	4/12/23 16:54	BKP	EPA 8260D	
Toluene	ND	ug/L	2.50	4/12/23 16:54	BKP	EPA 8260D	
<i>Surrogate: 1,2-Dichlorobenzene-d4</i>	<i>103%</i>		<i>70-130</i>	<i>4/12/23 16:54</i>	<i>BKP</i>	<i>EPA 8260D</i>	
<i>Surrogate: 4-Bromofluorobenzene</i>	<i>100%</i>		<i>70-130</i>	<i>4/12/23 16:54</i>	<i>BKP</i>	<i>EPA 8260D</i>	
<i>Surrogate: Toluene-d8</i>	<i>101%</i>		<i>70-130</i>	<i>4/12/23 16:54</i>	<i>BKP</i>	<i>EPA 8260D</i>	
Gasoline	3.90	mg/L	1.00	4/12/23 16:54	BKP	EPA 8015D	*
<i>Surrogate: 4-Bromofluorobenzene</i>	<i>94.6%</i>		<i>70-130</i>	<i>4/12/23 16:54</i>	<i>BKP</i>	<i>EPA 8015D</i>	

Anatek Labs, Inc.

1282 Alturas Drive - Moscow, ID 83843 - (208) 883-2839 - email moscow@anateklabs.com
504 E Sprague Ste. D - Spokane, WA 99202 - (509) 838-3999 - email spokane@anateklabs.com

Analytical Results Report

(Continued)

Sample Location: MW-2
Lab/Sample Number: WDC1497-04 Collect Date: 03/31/23 11:00
Date Received: 03/31/23 14:34 Collected By: Travis Stephens
Matrix: Groundwater

Analyte	Result	Units	PQL	Analyzed	Analyst	Method	Qualifier
Hydrocarbons							
Diesel	ND	mg/L	0.160	4/7/23 23:34	BAN	NWTPH-Dx	* M2
Lube Oil	ND	mg/L	0.400	4/7/23 23:34	BAN	NWTPH-Dx	*
Mineral Oil	ND	mg/L	0.160	4/7/23 23:34	BAN	NWTPH-Dx	*
<i>Surrogate: n-Hexacosane</i>	<i>69.7%</i>		<i>50-150</i>	<i>4/7/23 23:34</i>	<i>BAN</i>	<i>NWTPH-Dx</i>	
Volatiles							
Benzene	216	ug/L	25.0	4/12/23 17:23	BKP	EPA 8260D	
Ethylbenzene	380	ug/L	25.0	4/12/23 17:23	BKP	EPA 8260D	
m+p-Xylene	539	ug/L	25.0	4/12/23 17:23	BKP	EPA 8260D	
o-Xylene	38.5	ug/L	25.0	4/12/23 17:23	BKP	EPA 8260D	
Toluene	32.5	ug/L	25.0	4/12/23 17:23	BKP	EPA 8260D	
<i>Surrogate: 1,2-Dichlorobenzene-d4</i>	<i>102%</i>		<i>70-130</i>	<i>4/12/23 17:23</i>	<i>BKP</i>	<i>EPA 8260D</i>	
<i>Surrogate: 4-Bromofluorobenzene</i>	<i>101%</i>		<i>70-130</i>	<i>4/12/23 17:23</i>	<i>BKP</i>	<i>EPA 8260D</i>	
<i>Surrogate: Toluene-d8</i>	<i>100%</i>		<i>70-130</i>	<i>4/12/23 17:23</i>	<i>BKP</i>	<i>EPA 8260D</i>	
Gasoline	8.50	mg/L	5.00	4/12/23 17:23	BKP	EPA 8015D	*
<i>Surrogate: 4-Bromofluorobenzene</i>	<i>94.9%</i>		<i>70-130</i>	<i>4/12/23 17:23</i>	<i>BKP</i>	<i>EPA 8015D</i>	

Anatek Labs, Inc.

1282 Alturas Drive - Moscow, ID 83843 - (208) 883-2839 - email moscow@anateklabs.com
504 E Sprague Ste. D - Spokane, WA 99202 - (509) 838-3999 - email spokane@anateklabs.com

Analytical Results Report

(Continued)

Sample Location: MW-1
Lab/Sample Number: WDC1497-05 Collect Date: 03/31/23 11:52
Date Received: 03/31/23 14:34 Collected By: Travis Stephens
Matrix: Groundwater

Analyte	Result	Units	PQL	Analyzed	Analyst	Method	Qualifier
Hydrocarbons							
Diesel	ND	mg/L	0.160	4/8/23 0:30	BAN	NWTPH-Dx	* M2
Lube Oil	ND	mg/L	0.400	4/8/23 0:30	BAN	NWTPH-Dx	*
Mineral Oil	ND	mg/L	0.160	4/8/23 0:30	BAN	NWTPH-Dx	*
<i>Surrogate: n-Hexacosane</i>	<i>65.1%</i>		<i>50-150</i>	<i>4/8/23 0:30</i>	<i>BAN</i>	<i>NWTPH-Dx</i>	
Volatiles							
Benzene	0.750	ug/L	0.500	4/12/23 17:52	BKP	EPA 8260D	
Ethylbenzene	1.69	ug/L	0.500	4/12/23 17:52	BKP	EPA 8260D	
m+p-Xylene	1.15	ug/L	0.500	4/12/23 17:52	BKP	EPA 8260D	
o-Xylene	1.52	ug/L	0.500	4/12/23 17:52	BKP	EPA 8260D	
Toluene	ND	ug/L	0.500	4/12/23 17:52	BKP	EPA 8260D	
<i>Surrogate: 1,2-Dichlorobenzene-d4</i>	<i>102%</i>		<i>70-130</i>	<i>4/12/23 17:52</i>	<i>BKP</i>	<i>EPA 8260D</i>	
<i>Surrogate: 4-Bromofluorobenzene</i>	<i>100%</i>		<i>70-130</i>	<i>4/12/23 17:52</i>	<i>BKP</i>	<i>EPA 8260D</i>	
<i>Surrogate: Toluene-d8</i>	<i>99.6%</i>		<i>70-130</i>	<i>4/12/23 17:52</i>	<i>BKP</i>	<i>EPA 8260D</i>	
Gasoline	1.18	mg/L	0.200	4/12/23 17:52	BKP	EPA 8015D	*
<i>Surrogate: 4-Bromofluorobenzene</i>	<i>90.9%</i>		<i>70-130</i>	<i>4/12/23 17:52</i>	<i>BKP</i>	<i>EPA 8015D</i>	

Anatek Labs, Inc.

1282 Alturas Drive - Moscow, ID 83843 - (208) 883-2839 - email moscow@anateklabs.com
 504 E Sprague Ste. D - Spokane, WA 99202 - (509) 838-3999 - email spokane@anateklabs.com

Analytical Results Report

(Continued)

Sample Location: MW-3
 Lab/Sample Number: WDC1497-06 Collect Date: 03/31/23 12:32
 Date Received: 03/31/23 14:34 Collected By: Travis Stephens
 Matrix: Groundwater

Analyte	Result	Units	PQL	Analyzed	Analyst	Method	Qualifier
Hydrocarbons							
Diesel	ND	mg/L	0.160	4/8/23 1:25	BAN	NWTPH-Dx	* M2
Lube Oil	ND	mg/L	0.400	4/8/23 1:25	BAN	NWTPH-Dx	*
Mineral Oil	ND	mg/L	0.160	4/8/23 1:25	BAN	NWTPH-Dx	*
<i>Surrogate: n-Hexacosane</i>	<i>82.1%</i>		<i>50-150</i>	<i>4/8/23 1:25</i>	<i>BAN</i>	<i>NWTPH-Dx</i>	
Volatiles							
Benzene	ND	ug/L	0.500	4/12/23 18:22	BKP	EPA 8260D	
Ethylbenzene	ND	ug/L	0.500	4/12/23 18:22	BKP	EPA 8260D	
m+p-Xylene	ND	ug/L	0.500	4/12/23 18:22	BKP	EPA 8260D	
o-Xylene	ND	ug/L	0.500	4/12/23 18:22	BKP	EPA 8260D	
Toluene	ND	ug/L	0.500	4/12/23 18:22	BKP	EPA 8260D	
<i>Surrogate: 1,2-Dichlorobenzene-d4</i>	<i>101%</i>		<i>70-130</i>	<i>4/12/23 18:22</i>	<i>BKP</i>	<i>EPA 8260D</i>	
<i>Surrogate: 4-Bromofluorobenzene</i>	<i>100%</i>		<i>70-130</i>	<i>4/12/23 18:22</i>	<i>BKP</i>	<i>EPA 8260D</i>	
<i>Surrogate: Toluene-d8</i>	<i>101%</i>		<i>70-130</i>	<i>4/12/23 18:22</i>	<i>BKP</i>	<i>EPA 8260D</i>	
Gasoline	ND	mg/L	0.200	4/12/23 18:22	BKP	EPA 8015D	*
<i>Surrogate: 4-Bromofluorobenzene</i>	<i>94.7%</i>		<i>70-130</i>	<i>4/12/23 18:22</i>	<i>BKP</i>	<i>EPA 8015D</i>	

Anatek Labs, Inc.

1282 Alturas Drive - Moscow, ID 83843 - (208) 883-2839 - email moscow@anateklabs.com
 504 E Sprague Ste. D - Spokane, WA 99202 - (509) 838-3999 - email spokane@anateklabs.com

Analytical Results Report

(Continued)

Sample Location: MW-10
 Lab/Sample Number: WDC1497-07 Collect Date: 03/31/23 13:10
 Date Received: 03/31/23 14:34 Collected By: Travis Stephens
 Matrix: Groundwater

Analyte	Result	Units	PQL	Analyzed	Analyst	Method	Qualifier
Hydrocarbons							
Diesel	ND	mg/L	0.160	4/8/23 2:21	BAN	NWTPH-Dx	* M2
Lube Oil	ND	mg/L	0.400	4/8/23 2:21	BAN	NWTPH-Dx	*
Mineral Oil	ND	mg/L	0.160	4/8/23 2:21	BAN	NWTPH-Dx	*
<i>Surrogate: n-Hexacosane</i>	<i>82.5%</i>		<i>50-150</i>	<i>4/8/23 2:21</i>	<i>BAN</i>	<i>NWTPH-Dx</i>	
Volatiles							
Benzene	ND	ug/L	0.500	4/12/23 18:51	BKP	EPA 8260D	
Ethylbenzene	16.0	ug/L	0.500	4/12/23 18:51	BKP	EPA 8260D	
m+p-Xylene	0.810	ug/L	0.500	4/12/23 18:51	BKP	EPA 8260D	
o-Xylene	5.41	ug/L	0.500	4/12/23 18:51	BKP	EPA 8260D	
Toluene	ND	ug/L	0.500	4/12/23 18:51	BKP	EPA 8260D	
<i>Surrogate: 1,2-Dichlorobenzene-d4</i>	<i>104%</i>		<i>70-130</i>	<i>4/12/23 18:51</i>	<i>BKP</i>	<i>EPA 8260D</i>	
<i>Surrogate: 4-Bromofluorobenzene</i>	<i>99.3%</i>		<i>70-130</i>	<i>4/12/23 18:51</i>	<i>BKP</i>	<i>EPA 8260D</i>	
<i>Surrogate: Toluene-d8</i>	<i>99.8%</i>		<i>70-130</i>	<i>4/12/23 18:51</i>	<i>BKP</i>	<i>EPA 8260D</i>	
Gasoline	3.77	mg/L	0.200	4/12/23 18:51	BKP	EPA 8015D	*
<i>Surrogate: 4-Bromofluorobenzene</i>	<i>82.7%</i>		<i>70-130</i>	<i>4/12/23 18:51</i>	<i>BKP</i>	<i>EPA 8015D</i>	

Anatek Labs, Inc.

1282 Alturas Drive - Moscow, ID 83843 - (208) 883-2839 - email moscow@anateklabs.com
 504 E Sprague Ste. D - Spokane, WA 99202 - (509) 838-3999 - email spokane@anateklabs.com

Analytical Results Report (Continued)

Sample Location: Duplicate
 Lab/Sample Number: WDC1497-08 Collect Date: 03/31/23 00:00
 Date Received: 03/31/23 14:34 Collected By: Travis Stephens
 Matrix: Groundwater

Analyte	Result	Units	PQL	Analyzed	Analyst	Method	Qualifier
Hydrocarbons							
Diesel	ND	mg/L	0.160	4/8/23 3:16	BAN	NWTPH-Dx	* M2
Lube Oil	ND	mg/L	0.400	4/8/23 3:16	BAN	NWTPH-Dx	*
Mineral Oil	ND	mg/L	0.160	4/8/23 3:16	BAN	NWTPH-Dx	*
<i>Surrogate: n-Hexacosane</i>	<i>60.5%</i>		<i>50-150</i>	<i>4/8/23 3:16</i>	<i>BAN</i>	<i>NWTPH-Dx</i>	
Volatiles							
Benzene	209	ug/L	50.0	4/13/23 22:19	BKP	EPA 8260D	
Ethylbenzene	403	ug/L	50.0	4/13/23 22:19	BKP	EPA 8260D	
m+p-Xylene	559	ug/L	50.0	4/13/23 22:19	BKP	EPA 8260D	
o-Xylene	37.9	ug/L	0.500	4/13/23 22:19	BKP	EPA 8260D	
Toluene	29.6	ug/L	0.500	4/13/23 22:19	BKP	EPA 8260D	
<i>Surrogate: 1,2-Dichlorobenzene-d4</i>	<i>106%</i>		<i>70-130</i>	<i>4/13/23 22:19</i>	<i>BKP</i>	<i>EPA 8260D</i>	
<i>Surrogate: 4-Bromofluorobenzene</i>	<i>75.5%</i>		<i>70-130</i>	<i>4/13/23 22:19</i>	<i>BKP</i>	<i>EPA 8260D</i>	
<i>Surrogate: Toluene-d8</i>	<i>90.6%</i>		<i>70-130</i>	<i>4/13/23 22:19</i>	<i>BKP</i>	<i>EPA 8260D</i>	
Gasoline	10.1	mg/L	2.00	4/13/23 22:19	BKP	EPA 8015D	*
<i>Surrogate: 4-Bromofluorobenzene</i>	<i>92.0%</i>		<i>70-130</i>	<i>4/13/23 22:19</i>	<i>BKP</i>	<i>EPA 8015D</i>	

Anatek Labs, Inc.

1282 Alturas Drive - Moscow, ID 83843 - (208) 863-2839 - email moscow@anateklabs.com
504 E Sprague Ste. D - Spokane, WA 99202 - (509) 838-3999 - email spokane@anateklabs.com

Analytical Results Report

(Continued)

Sample Location: Trip Blanks
Lab/Sample Number: WDC1497-09 Collect Date: 03/28/23 08:38
Date Received: 03/31/23 14:34 Collected By: JDP
Matrix: Groundwater

Analyte	Result	Units	PQL	Analyzed	Analyst	Method	Qualifier
Volatiles							
Benzene	ND	ug/L	0.500	4/11/23 12:10	BKP	EPA 8260D	
Ethylbenzene	ND	ug/L	0.500	4/11/23 12:10	BKP	EPA 8260D	
m+p-Xylene	ND	ug/L	0.500	4/11/23 12:10	BKP	EPA 8260D	
o-Xylene	ND	ug/L	0.500	4/11/23 12:10	BKP	EPA 8260D	
Toluene	ND	ug/L	0.500	4/11/23 12:10	BKP	EPA 8260D	

Surrogate: 1,2-Dichlorobenzene-d4	101%		70-130	4/11/23 12:10	BKP	EPA 8260D	

Surrogate: 4-Bromofluorobenzene	103%		70-130	4/11/23 12:10	BKP	EPA 8260D	

Surrogate: Toluene-d8	103%		70-130	4/11/23 12:10	BKP	EPA 8260D	

Gasoline	ND	mg/L	0.200	4/11/23 12:10	BKP	EPA 8015D	*
Surrogate: 4-Bromofluorobenzene	113%		70-130	4/11/23 12:10	BKP	EPA 8015D	

Authorized Signature,

Brock Gerger For Kathleen Sattler, Laboratory Manager

M2 Matrix spike recovery was low; the associated blank spike recovery was acceptable. Potential matrix effect.
PQL Practical Quantitation Limit
ND Not Detected
MCL EPA's Maximum Contaminant Level
Dry Sample results reported on a dry weight basis
* Not a state-certified analyte

RPD Relative Percent Difference
%REC Percent Recovery
Source Sample that was spiked or duplicated.

This report shall not be reproduced except in full, without the written approval of the laboratory
The results reported related only to the samples indicated.

Anatek Labs, Inc.

1282 Alturas Drive - Moscow, ID 83843 - (208) 883-2839 - email moscow@anateklabs.com
504 E Sprague Ste. D - Spokane, WA 99202 - (509) 838-3999 - email spokane@anateklabs.com

Certifications

Code	Description	Facility	Number
AZ DHS	Arizona Department of Health Services	Anatek-Moscow, ID	AZ0701

Anatek Labs, Inc.

1282 Alturas Drive - Moscow, ID 83843 - (208) 883-2839 - email moscow@anateklabs.com
 504 E Sprague Ste. D - Spokane, WA 99202 - (509) 838-3999 - email spokane@anateklabs.com

Quality Control Data

Hydrocarbons

Analyte	Result	Qual	Reporting Limit	Units	Spike Level	Source Result	%REC	%REC Limits	RPD	RPD Limit
Batch: BDD0223 - W TPH-Dx										
Blank (BDD0223-BLK1)										
					Prepared & Analyzed: 4/7/2023					
Diesel	ND		0.160	mg/L						
Lube Oil	ND		0.400	mg/L						
Mineral Oil	ND		0.160	mg/L						
<i>Surrogate: n-Hexacosane</i>			<i>0.123</i>	<i>mg/L</i>	<i>0.200</i>		<i>61.6</i>	<i>50-150</i>		
LCS (BDD0223-BS1)										
					Prepared & Analyzed: 4/7/2023					
Diesel	1.52		0.160	mg/L	2.00		76.0	70-130		
Lube Oil	ND		0.400	mg/L				70-130		
<i>Surrogate: n-Hexacosane</i>			<i>0.144</i>	<i>mg/L</i>	<i>0.200</i>		<i>72.0</i>	<i>50-150</i>		
Matrix Spike (BDD0223-MS1)										
			Source: WDC1497-01			Prepared & Analyzed: 4/7/2023				
Diesel	1.20	M2	0.160	mg/L	2.00	ND	60.2	70-130		
<i>Surrogate: n-Hexacosane</i>			<i>0.135</i>	<i>mg/L</i>	<i>0.200</i>		<i>67.6</i>	<i>50-150</i>		
Matrix Spike Dup (BDD0223-MSD1)										
			Source: WDC1497-01			Prepared & Analyzed: 4/7/2023				
Diesel	1.11	M2	0.160	mg/L	2.00	ND	55.3	70-130	8.54	20
<i>Surrogate: n-Hexacosane</i>			<i>0.127</i>	<i>mg/L</i>	<i>0.200</i>		<i>63.5</i>	<i>50-150</i>		

Quality Control Data

Volatiles

Analyte	Result	Qual	Reporting Limit	Units	Spike Level	Source Result	%REC	%REC Limits	RPD	RPD Limit
Batch: BDD0367 - VOC										
Blank (BDD0367-BLK1)										
					Prepared & Analyzed: 4/11/2023					
o-Xylene (MCL for total)	ND		0.500	ug/L						
Toluene	ND		0.500	ug/L						
m/p Xylenes (MCL for total)	ND		0.500	ug/L						
Benzene	ND		0.500	ug/L						
Ethylbenzene	ND		0.500	ug/L						
<i>Surrogate: 4-Bromofluorobenzene</i>			<i>20.7</i>	<i>ug/L</i>	<i>20.0</i>		<i>103</i>	<i>70-130</i>		
<i>Surrogate: Toluene-d8</i>			<i>20.7</i>	<i>ug/L</i>	<i>20.0</i>		<i>104</i>	<i>70-130</i>		
<i>Surrogate: 1,2-Dichlorobenzene-d4</i>			<i>20.4</i>	<i>ug/L</i>	<i>20.0</i>		<i>102</i>	<i>70-130</i>		
LCS (BDD0367-BS1)										
					Prepared & Analyzed: 4/11/2023					
m/p Xylenes (MCL for total)	21.4		0.500	ug/L	20.0		107	80-120		
o-Xylene (MCL for total)	10.6		0.500	ug/L	10.0		106	80-120		
Ethylbenzene	10.7		0.500	ug/L	10.0		107	80-120		
Benzene	11.2		0.500	ug/L	10.0		112	80-120		
Toluene	10.9		0.500	ug/L	10.0		109	80-120		
<i>Surrogate: Toluene-d8</i>			<i>20.5</i>	<i>ug/L</i>	<i>20.0</i>		<i>103</i>	<i>70-130</i>		
<i>Surrogate: 4-Bromofluorobenzene</i>			<i>20.4</i>	<i>ug/L</i>	<i>20.0</i>		<i>102</i>	<i>70-130</i>		
<i>Surrogate: 1,2-Dichlorobenzene-d4</i>			<i>20.2</i>	<i>ug/L</i>	<i>20.0</i>		<i>101</i>	<i>70-130</i>		
Batch: BDD0368 - VOC										
Blank (BDD0368-BLK1)										
					Prepared & Analyzed: 4/11/2023					
Gasoline	ND		0.200	mg/L						
<i>Surrogate: 4-Bromofluorobenzene</i>			<i>0.0207</i>	<i>mg/L</i>	<i>0.0200</i>		<i>103</i>	<i>70-130</i>		

Anatek Labs, Inc.

1282 Alturas Drive - Moscow, ID 83843 - (208) 883-2839 - email moscow@anateklabs.com
 504 E Sprague Ste. D - Spokane, WA 99202 - (509) 838-3999 - email spokane@anateklabs.com

Quality Control Data (Continued)

Volatiles (Continued)

Analyte	Result	Qual	Reporting Limit	Units	Spike Level	Source Result	%REC	%REC Limits	RPD	RPD Limit
---------	--------	------	-----------------	-------	-------------	---------------	------	-------------	-----	-----------

Batch: BDD0368 - VOC (Continued)

LCS (BDD0368-BS1)

Prepared & Analyzed: 4/11/2023

Gasoline	0.930		0.200	mg/L	1.00		93.0	80-120		
<i>Surrogate: 4-Bromofluorobenzene</i>			<i>0.0247</i>	<i>mg/L</i>	<i>0.0200</i>		<i>123</i>	<i>70-130</i>		

Batch: BDD0422 - VOC

Blank (BDD0422-BLK1)

Prepared & Analyzed: 4/12/2023

o-Xylene (MCL for total)	ND		0.500	ug/L						
Benzene	ND		0.500	ug/L						
m/p Xylenes (MCL for total)	ND		0.500	ug/L						
Toluene	ND		0.500	ug/L						
Ethylbenzene	ND		0.500	ug/L						
<i>Surrogate: 4-Bromofluorobenzene</i>			<i>21.3</i>	<i>ug/L</i>	<i>20.0</i>		<i>107</i>	<i>70-130</i>		
<i>Surrogate: Toluene-d8</i>			<i>21.6</i>	<i>ug/L</i>	<i>20.0</i>		<i>108</i>	<i>70-130</i>		
<i>Surrogate: 1,2-Dichlorobenzene-d4</i>			<i>19.8</i>	<i>ug/L</i>	<i>20.0</i>		<i>99.2</i>	<i>70-130</i>		

LCS (BDD0422-BS1)

Prepared & Analyzed: 4/12/2023

o-Xylene (MCL for total)	10.2		0.500	ug/L	10.0		102	80-120		
Toluene	10.1		0.500	ug/L	10.0		101	80-120		
m/p Xylenes (MCL for total)	20.4		0.500	ug/L	20.0		102	80-120		
Ethylbenzene	10.2		0.500	ug/L	10.0		102	80-120		
Benzene	10.1		0.500	ug/L	10.0		101	80-120		
<i>Surrogate: 4-Bromofluorobenzene</i>			<i>20.1</i>	<i>ug/L</i>	<i>20.0</i>		<i>101</i>	<i>70-130</i>		
<i>Surrogate: Toluene-d8</i>			<i>20.0</i>	<i>ug/L</i>	<i>20.0</i>		<i>100</i>	<i>70-130</i>		
<i>Surrogate: 1,2-Dichlorobenzene-d4</i>			<i>19.8</i>	<i>ug/L</i>	<i>20.0</i>		<i>99.1</i>	<i>70-130</i>		

Anatek Labs, Inc.

1282 Alturas Drive - Moscow, ID 83843 - (208) 883-2839 - email moscow@anateklabs.com
 504 E Sprague Ste. D - Spokane, WA 99202 - (509) 838-3999 - email spokane@anateklabs.com

Quality Control Data (Continued)

Volatiles (Continued)

Analyte	Result	Qual	Reporting Limit	Units	Spike Level	Source Result	%REC	%REC Limits	RPD	RPD Limit
Batch: BDD0423 - VOC										
Blank (BDD0423-BLK1)										
Prepared & Analyzed: 4/12/2023										
Gasoline	ND		0.200	mg/L						

Surrogate: 4-Bromofluorobenzene			0.0213	mg/L	0.0200		107	70-130		
LCS (BDD0423-BS1)										
Prepared & Analyzed: 4/12/2023										
Gasoline	0.850		0.200	mg/L	1.00		85.0	80-120		

Surrogate: 4-Bromofluorobenzene			0.0214	mg/L	0.0200		107	70-130		
Batch: BDD0528 - VOC										
Blank (BDD0528-BLK1)										
Prepared & Analyzed: 4/13/2023										
Toluene	ND		0.500	ug/L						
o-Xylene (MCL for total)	ND		0.500	ug/L						
Benzene	ND		0.500	ug/L						
Ethylbenzene	ND		0.500	ug/L						
m/p Xylenes (MCL for total)	ND		0.500	ug/L						

Surrogate: 4-Bromofluorobenzene			19.7	ug/L	20.0		98.5	70-130		
Surrogate: Toluene-d8			18.4	ug/L	20.0		92.2	70-130		
Surrogate: 1,2-Dichlorobenzene-d4			20.1	ug/L	20.0		101	70-130		
LCS (BDD0528-BS1)										
Prepared & Analyzed: 4/13/2023										
Ethylbenzene	9.71		0.500	ug/L	10.0		97.1	80-120		
Toluene	8.16		0.500	ug/L	10.0		81.6	80-120		
m/p Xylenes (MCL for total)	19.4		0.500	ug/L	20.0		97.0	80-120		
Benzene	8.15		0.500	ug/L	10.0		81.5	80-120		
o-Xylene (MCL for total)	9.58		0.500	ug/L	10.0		95.8	80-120		

Surrogate: Toluene-d8			18.2	ug/L	20.0		91.1	70-130		
Surrogate: 4-Bromofluorobenzene			19.7	ug/L	20.0		98.7	70-130		
Surrogate: 1,2-Dichlorobenzene-d4			20.0	ug/L	20.0		99.9	70-130		

Anatek Labs, Inc.

1282 Alturas Drive - Moscow, ID 83843 - (208) 883-2839 - email moscow@anateklabs.com
 504 E Sprague Ste. D - Spokane, WA 99202 - (509) 838-3999 - email spokane@anateklabs.com

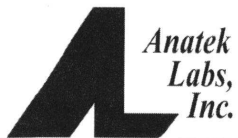
Quality Control Data (Continued)

Volatiles (Continued)

Analyte	Result	Qual	Reporting Limit	Units	Spike Level	Source Result	%REC	%REC Limits	RPD	RPD Limit
Batch: BDD0546 - VOC										
Blank (BDD0546-BLK1)										
Gasoline	ND		0.200	mg/L						
Prepared & Analyzed: 4/13/2023										

Surrogate: 4-Bromofluorobenzene			0.0197	mg/L	0.0200		98.5	70-130		
LCS (BDD0546-BS1)										
Gasoline	0.800		0.200	mg/L	1.00		80.0	80-120		
Prepared & Analyzed: 4/13/2023										

Surrogate: 4-Bromofluorobenzene			0.0208	mg/L	0.0200		104	70-130		



Chain of Custody Record

1282 Alturas Drive, Moscow ID 83843 (208) 883-2839 FAX 882-9246
504 E Sprague Ste D, Spokane WA 99202 (509) 838-3999 FAX 838-4433

Anatek Log-In #

WDC1497

 Due: 04/17/23

Company Name: Budinger + Associates, inc.			Project Manager: Steve Burchett		
Address: 1101 N. Fancher Rd.			Project Name & #: X09032		
City: Spokane Valley	State: WA	Zip: 99212	Email Address: sburchett@budingerinc.com AND tstephens@budingerinc.com		
Phone: 509-535-8941			Purchase Order #: X09032		
Fax:			Sampler Name & phone: Travis Stephens 509-954-9210		

Turn _____

Please refer to our normal turn around times at:
<http://www.anateklabs.com/services/guidelines/reporting.asp>

Normal
 Next Day*
 2nd Day*
 Other*

*All rush order requests must be prior approved.

Phone
 Mail
 Fax
 Email

Provide Sample Description				List Analyses Requested						Note Special Instructions/Comments			
Lab ID	Sample Identification	Sampling Date/Time	Matrix	# of Containers	Sample Volume	TPH Gas	TPH Dicsci	BTX					
	MW-9	3:31:23/0900	GW	3		X	X	X					
	MW-6	0941											
	MW-4	1018											
	MW-2	1100											
	MW-3	1152											
	MW-3	1232											
	MW-10	1310											
	DUP	DUP											
	Trip Blank			2									

Inspection Checklist

Received Intact?	Y	N
Labels & Chains Agree?	Y	N
Containers Sealed?	Y	N
VOC Head Space?	Y	N

Temperature (°C): 7.0 IRZ

Preservative: HCL 230043952

pH: 2102559

Date & Time: _____

Inspected By: _____

	Printed Name	Signature	Company	Date	Time
Relinquished by	Travis Stephens		Budinger + Associates inc.	3/31/23	1434
Received by	Joseph Pappas		Anatek	3/31/23	1434
Relinquished by					
Received by					
Relinquished by					
Received by					

