



Public Participation Plan Block 38 West Site

**520 Westlake Ave N, Seattle, King County
Facility Site ID: 62773, Cleanup Site ID: 15008**

Toxics Cleanup Program

Washington State Department of Ecology
Shoreline, Washington

November 2024

Publication Information

This document is available on the Department of Ecology's [Block 38 West cleanup site page](#).¹

Related Information

- Cleanup Site ID: 15008
- Facility Site ID: 62773

Contact Information

Toxics Cleanup Program

Kristen Forkeutis, Outreach Specialist
Kristen.Forkeutis@ecy.wa.gov
425-240-4353

Tena Seeds, Site Manager
Tena.Seeds@ecy.wa.gov
425-457-3143

Northwest Region Office

PO Box 330316
Shoreline, WA 98133-9716
Phone: 206-594-0000

Website: [Washington State Department of Ecology](#)²

ADA Accessibility

The Department of Ecology is committed to providing people with disabilities access to information and services by meeting or exceeding the requirements of the Americans with Disabilities Act (ADA), Section 504 and 508 of the Rehabilitation Act, and Washington State Policy #188.

To request an ADA accommodation, contact the Ecology ADA Coordinator by phone at 360-407-6831 or email at ecyadacoordinator@ecy.wa.gov. For Washington Relay Service or TTY call 711 or 877-833-6341. Visit [Ecology's website](#)³ for more information

Language Accessibility

To request information in another language, call Kristen Forkeutis at 425-240-4353, and wait on the line while we get an interpreter connected.

¹ <https://apps.ecology.wa.gov/cleanupsearch/site/15008>

² <https://ecology.wa.gov/About-us/Contact-us>

³ <https://ecology.wa.gov/ADA>

Department of Ecology's Region Offices

Map of Counties Served



Southwest Region 360-407-6300	Northwest Region 206-594-0000	Central Region 509-575-2490	Eastern Region 509-329-3400
---	---	---------------------------------------	---------------------------------------

Region	Counties served	Mailing Address	Phone
Southwest	Clallam, Clark, Cowlitz, Grays Harbor, Jefferson, Mason, Lewis, Pacific, Pierce, Skamania, Thurston, Wahkiakum	PO Box 47775 Olympia, WA 98504	360-407-6300
Northwest	Island, King, Kitsap, San Juan, Skagit, Snohomish, Whatcom	PO Box 330316 Shoreline, WA 98133	206-594-0000
Central	Benton, Chelan, Douglas, Kittitas, Klickitat, Okanogan, Yakima	1250 W Alder St Union Gap, WA 98903	509-575-2490
Eastern	Adams, Asotin, Columbia, Ferry, Franklin, Garfield, Grant, Lincoln, Pend Oreille, Spokane, Stevens, Walla Walla, Whitman	4601 N Monroe Spokane, WA 99205	509-329-3400
Headquarters	Across Washington	PO Box 46700 Olympia, WA 98504	360-407-6000

Public Participation Plan

**Block 38 West Cleanup Site
520 Westlake Ave N, Seattle, WA**

Toxics Cleanup Program
Washington State Department of Ecology
Northwest Region Office
Shoreline, WA

November 2024



DEPARTMENT OF
ECOLOGY
State of Washington

Table of Contents

List of Figures.....	5
Figures.....	5
Public Involvement in Contamination Cleanup	6
Site contacts.....	6
Public Participation Grants	6
Washington’s Cleanup Laws	7
Model Toxics Control Act.....	7
State Environmental Policy Act.....	7
Site Information.....	9
Land use.....	9
How the site became contaminated.....	11
Contamination and completed cleanup actions.....	11
Why this site matters.....	11
Area community	12
Tribal engagement	13
Environmental Justice.....	13
Public Participation Activities	16
How we share information with the community.....	16
How to share information with us	18
Plan Amendments	20
Appendices	21
Appendix A. Steps in the MTCA cleanup process.....	21
Appendix B. EPA EJScreen Community Report & ACS Summary Report	21

List of Figures

Figures

Figure 1: Steps in Washington's Cleanup Process 8

Figure 2. Block 38 West Site location. 9

Figure 3. North parcel **Figure 4.** Center parcel **Figure 5.** South parcel 9

Figure 6. Block 38 West Site property map with historic features. Farallon 2019..... 10

Figure 7: Washington Environmental Health Disparities Map for the Block 38 West Census Tract 007300 14

Figure 8: EPA EJScreen generated map of the outreach impact for the Block 38 West Site 15

Public Involvement in Contamination Cleanup

The Washington State Department of Ecology (Ecology) developed this public participation plan (plan) in cooperation with City Investors IX L.L.C., the party responsible for the cleanup of the Block 38 West (Site). The purpose of the plan is to promote meaningful community involvement during cleanup.

The plan describes ways Ecology will inform the public about contamination investigations and cleanup options throughout the cleanup process. Ecology encourages the public to learn about and get involved in decision-making opportunities. This plan identifies how and when the public can get involved during different stages of the investigation and cleanup of contamination.

Site contacts

To be included in the site record, comments about the cleanup process must be submitted during comment periods. Questions and informal comments or information about the site's history are welcome anytime.

Toxics Cleanup Program

Northwest Region Office
15700 Dayton Ave N
Shoreline, WA 98133

Tena Seeds, PE, Site Manager
Tena.Seeds@ecy.wa.gov
425-457-3143

Kristen Forkeutis, Outreach Specialist
Kristen.Forkeutis@ecy.wa.gov
425-240-4353

Potentially Liable Person (PLP)

City Investors IX L.L.C.
505 5th Ave South, Suite 900
Seattle, WA 98104

Corey Wilson, Sr. Real Estate Enviro. Manager
CoreyW@vulcan.com
206-342-2645

Public Participation Grants

Grants may be available to neighborhood committees, non-profits, and other groups interested in the site. For contaminated sites, these funds can be used to:

- Hire an expert to help interpret technical information
- Conduct activities that enhance the public's understanding of, and participation in, the cleanup process

For more information about public participation grants, please contact Laura Busby at 360-280-5088 or laura.busby@ecy.wa.gov and Jill Krumlauf at 360-790-5771 or jill.krumlauf@ecy.wa.gov. You may also visit the [Public Participation Grant website](#).⁴

⁴ <https://ecology.wa.gov/PPG>

Washington's Cleanup Laws

Ecology uses the Model Toxics Control Act (MTCA) and accompanying regulations for cleanup activities. This plan is required under MTCA, a law that passed in 1989. MTCA provides guidelines for contaminated site cleanup in Washington State and sets standards to ensure the cleanup protects human health and the environment.

Model Toxics Control Act

MTCA began as a grassroots citizen's initiative in 1988 and started the process of systematically cleaning up contaminated sites in Washington. Under MTCA, a current or past property owner or operator may be held responsible for cleaning up contamination on, or coming from, their property to standards that are safe for human health and the environment.

Ecology enacts [MTCA](#)⁵ and oversees cleanups in the state and issues regulations and guidance governing those cleanups. The regulations are found in [Chapter 173-340 Washington Administrative Code \(WAC\)](#).⁶ Ecology investigates reports of property contamination, and if the contamination is seen as a significant threat to human health or the environment, the contaminated property is placed on the [Contaminated Sites List](#)⁷, and the cleanup process begins.

Public participation is an important part of cleanup under the MTCA process. Participation needs are assessed at each cleanup site according to the level of public interest and the degree of risk posed by the contamination. Individuals who live near the site, community groups, businesses, government, other organizations, and interested parties have the opportunity to get involved by commenting on the cleanup process.

Under MTCA, [Washington's cleanup process](#)⁸ includes multiple steps (see Figure 1 and Appendix A), with opportunities for the public to review and comment on cleanup documents. A partial cleanup (called an interim action) can occur at any time during the cleanup process. The public is provided an opportunity to review and comment on planned interim action work as well.

State Environmental Policy Act

MTCA cleanups also require evaluation under the State Environmental Policy Act (SEPA; [Chapter 197-11 WAC](#)⁹). Under SEPA, the potential for significant adverse environmental impacts from a project or action must be evaluated by state and local agencies when making decisions. This evaluation is subject to public review and comment in parallel with cleanup documents.

⁵ <https://www.ecology.wa.gov/mtca>

⁶ <https://apps.ecology.wa.gov/publications/publications/9406.pdf>

⁷ <https://apps.ecology.wa.gov/cleanupsearch/reports/cleanup/contaminated>

⁸ <https://ecology.wa.gov/MTCA-process>

⁹ <https://apps.leg.wa.gov/wac/default.aspx?cite=197-11>

Washington's Cleanup Process

Public participation plans and comment periods are only required for cleanups under a legal agreement with Ecology. Otherwise, all cleanups follow the same steps. The steps are defined by Washington's cleanup law, the Model Toxics Control Act.



January 2024 | publication 19-09-166

Figure 1: Steps in Washington's Cleanup Process

Site Information

Land use

The Block 38 West Site (Site) is located in the South Lake Union neighborhood of Seattle. The property known as Block 38 West is generally located at 500-536 Westlake Avenue North, is approximately 1.06 acres in size, and consists of three parcels (Property). The Property is currently zoned for mixed residential and commercial uses.

Structures on the Property previously included a 3-story reinforced concrete building on the northernmost parcel that was constructed in 1920 (Figure 3); a 2-story reinforced concrete building on the central parcel that was constructed in 1964 (Figure 4); and a 3-story masonry building on the southernmost parcel that was constructed in 1919 (Figure 5).



Figure 2. Block 38 West Site location.



Figure 3. North parcel



Figure 4. Center parcel



Figure 5. South parcel

Historical operations on the northern portion of the Block 38 West Property included lumber storage, a transfer warehouse, and a commercial printer. Historical operations on the central portion of the Block 38 West Property included lumber storage, a horse stable and wagon house, a blacksmith, a wagon shop, an auto repair facility, a veterinary hospital, parking, and retail operations. Historical operations on the southern portion of the Block 38 West Property from the 1890s through 2019 included lumber storage, a blacksmith shop, warehouse storage, and retail and commercial operations. A railroad trestle ran through what is now an alley just east of the Property.

City Investors IX L.L.C. bought the three parcels in the late 1990s. In 2019, the company demolished the Property’s structures in preparation for redevelopment. Property redevelopment was completed in 2022 and included construction of a multistory mixed-use

building with 12 stories of commercial office space above street level and four levels of parking below street level.

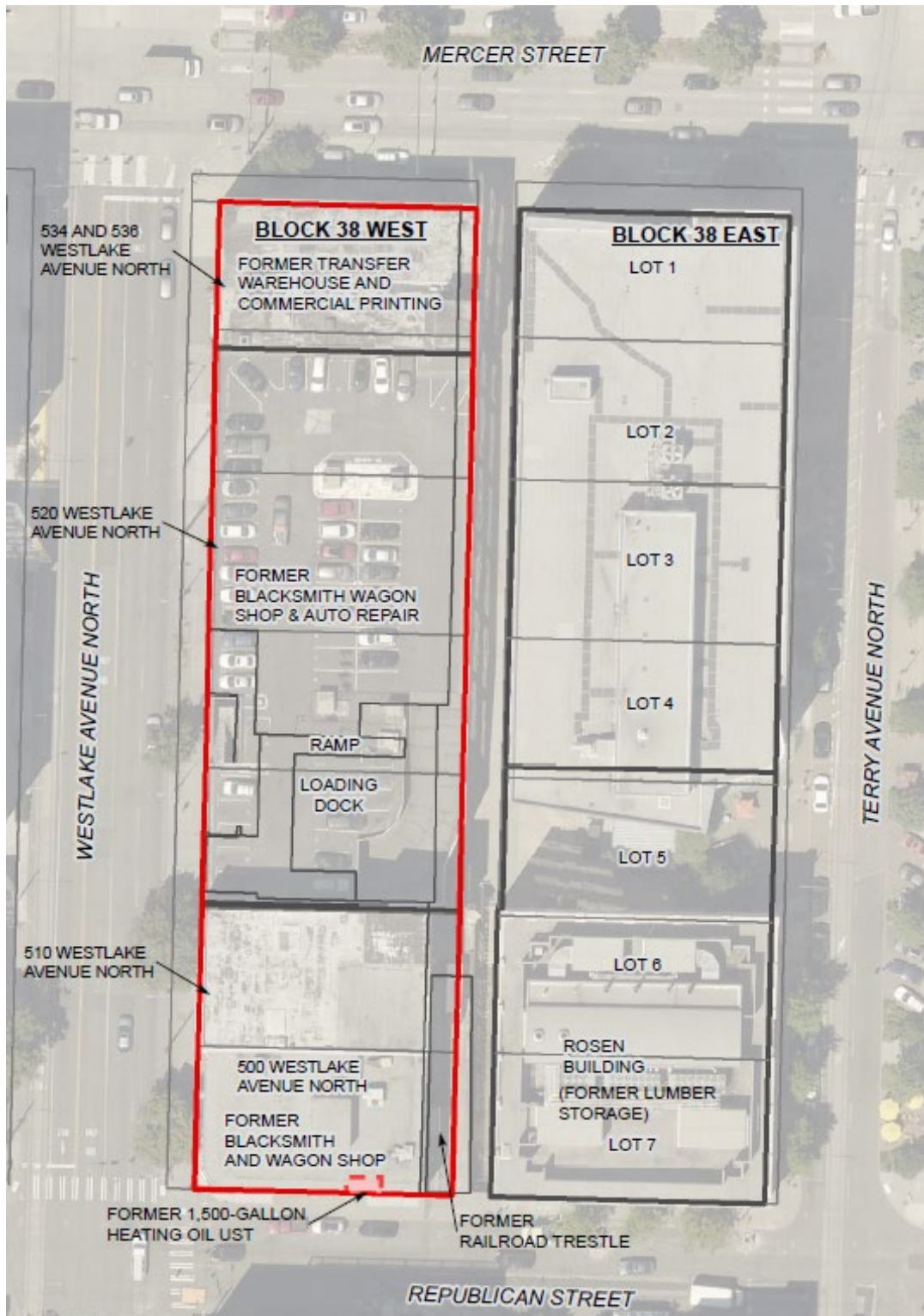


Figure 6. Block 38 West Site property map with historic features. Farallon 2019.

How the site became contaminated

Based on environmental investigations and interim actions, historical operations and site features including the following have been confirmed as sources of soil and groundwater contamination at the Block 38 West Site:

- Historical placement of impacted fill soil;
- Impacted fill soil located within wood debris associated with the former lumber mill operations on Block 38;
- Former timber pilings associated with historical buildings;
- Oil encountered in a sanitary sewer line at the southeastern portion of the Block 38 West Property (efforts to evaluate the sanitary sewer line indicated no specific point of release or former feature to which the sanitary sewer line was connected);
- A coal fill layer ranging in thickness from 4 to 6 inches encountered across the east-central and northern portions of the Block 38 West Property and in the southern and central portions of the alley;
- Localized releases of petroleum from former bunker fuel oil tanks in the northwestern portion of the Block 38 West Property; and
- Localized impacts associated with a former railroad trestle and former timber pilings within the alley.

Contamination and completed cleanup actions

Investigations at the Site found the following in soil and/or groundwater:

- petroleum hydrocarbons as diesel-range and oil-range organics (DRO+ORO), and as gasoline-range organics
- polycyclic aromatic hydrocarbons (PAHs), including naphthalenes and carcinogenic PAHs (cPAHs)
- benzene
- metals (barium and mercury)

These contaminants were found at levels that exceed allowable standards under the state's cleanup law, the Model Toxics Control Act (MTCA Chapter 70A.305 RCW). All of these contaminants were cleaned up through interim actions conducted between 2019 and 2021, with the exception of DRO+ORO and cash which remain within shallow soil in localized areas of the Site and will be addressed by the final cleanup action.

Why this site matters

The Block 38 West Site is part of the South Lake Union neighborhood, which is located next to downtown Seattle and bordered on the north by Lake Union. This area has a long history of industrial and commercial activities which caused contamination of the soil and groundwater. This area of Seattle has undergone extensive redevelopment since the early 2000s as new buildings have been constructed for commercial and residential use. Construction activities in the South Lake Union area could impact an existing groundwater contaminant plume that has

migrated onto multiple surrounding properties near the lake. Ecology is working with Property owners to clean up contamination present at the Site and other nearby sites to reduce impacts to human health and the environment.

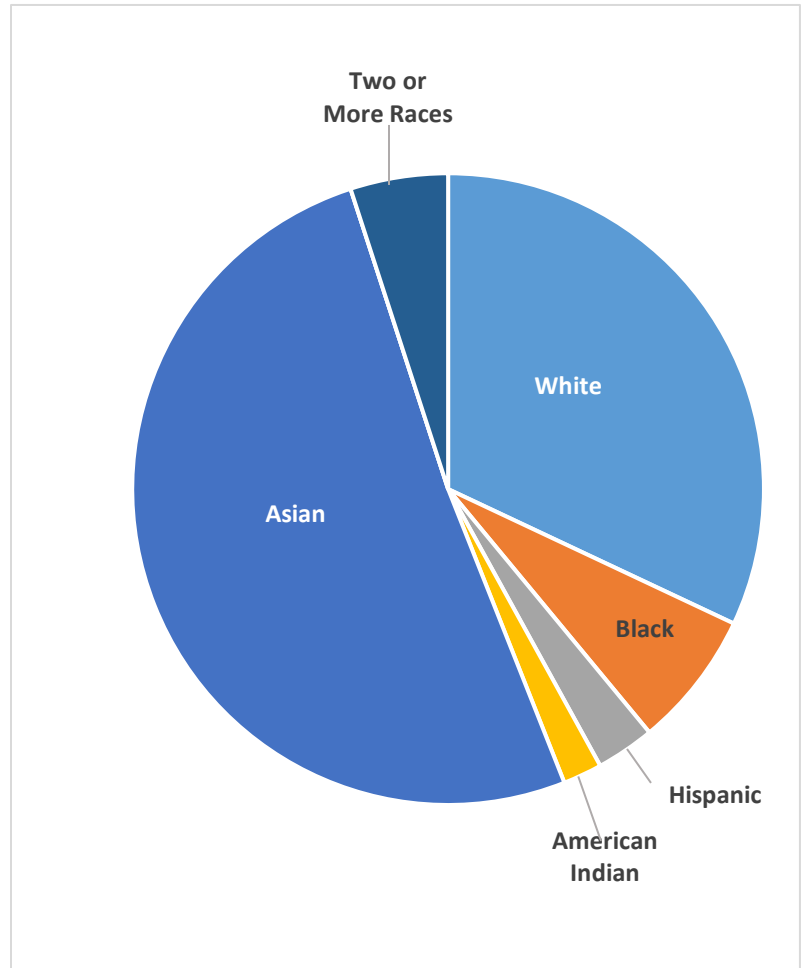
Area community

Land use in the Site vicinity consists primarily of commercial activities and residential areas. Most of the nearby residences are multi-unit residential developments with some detached single-family dwellings.

According to the most recent U.S. Census Bureau data, the median annual household income in the city of Seattle is \$116,068.¹⁰ 77% of the households within a quarter mile of the Block 38 West Site have a household income base of \$75,000+ (see Appendix B for the “EPA EJScreen American Community Survey”).

The percent of the population by race within a quarter mile of the Site follows (see Appendix B for the “EPA EJScreen American Community Survey”):

- White: 32%
- Black: 7%
- Hispanic: 3%
- American Indian: 2%
- Asian: 51%
- Pacific Islander: 0%
- Two or More Races: 5%



¹⁰ <https://www.census.gov/quickfacts/fact/table/kingcountywashington,seattlecitywashington/INC110222>

Tribal engagement

Ecology invites the Duwamish Tribe, Muckleshoot Tribe, Stillaguamish Tribe, Nisqually Tribe, Suquamish Tribe, Squaxin Island Tribe, Swinomish Tribe, Puyallup Tribe, Snoqualmie Tribe, and Tulalip Tribe to engage with the cleanup process for this Site. Ecology will ensure these Tribes will be engaged with any decision-making process for this Site and have ample opportunity to be involved throughout the process on a government-to-government basis.

Environmental Justice

Ecology utilizes multiple resources to better understand the environmental and demographic information of the communities impacted by cleanup sites. The following environmental justice tools provide information that help our team plan for public outreach.

Washington Environmental Health Disparity Map

The [Washington Environmental Health Disparity Map](#)¹¹ evaluates environmental health risk factors in communities.

Ecology does not interpret rankings as absolute values, and we do not use them to diagnose a community health issue or to label a community. Environmental health disparity is ranked on a scale of 1-10 (low to high) and is relative to other locations in the state. The census tract for the Block 38 West Site ranks 10 for environmental health risk (see Figure 7).

The Washington State Department of Health mapping tool model was “specifically adapted from CalEnviroScreen – a cumulative environmental impacts assessment mapping tool developed by CalEPA and used in California. – It estimates a cumulative environmental health impact score for each census tract reflecting pollutant exposures and factors that affect people’s vulnerability to environmental pollution.

The model is based on a conceptual formula of Risk = Threat * Vulnerability, where threat and vulnerability are based on several indicators.

The threat is represented by indicators that account for pollution burden, which is a combination of environmental effects and environmental exposures in communities. Environmental effects include indicators that account for adverse environmental quality generally, even when population contact with an environmental hazard is unknown or uncertain. Environmental exposures include the levels of certain pollutants that populations come into contact with.

Vulnerability is represented by indicators of socioeconomic factors and sensitive populations for which there is clear evidence that they may affect susceptibility or vulnerability to an increased pollution burden. Indicators in socioeconomic factors measure population

¹¹ <https://fortress.wa.gov/doh/wtnibl/WTNIBL/>

characteristics that modify the pollution burden itself. Sensitive populations refer to those who are at greater risk due to intrinsic biological vulnerability to environmental stressors.

In the model, threat is multiplied by vulnerability in order to reflect the scientific literature that indicates population characteristics often modify and amplify the impact of pollution exposures on certain vulnerable populations. The rankings help to compare health and social factors that may contribute to disparities in a community.”

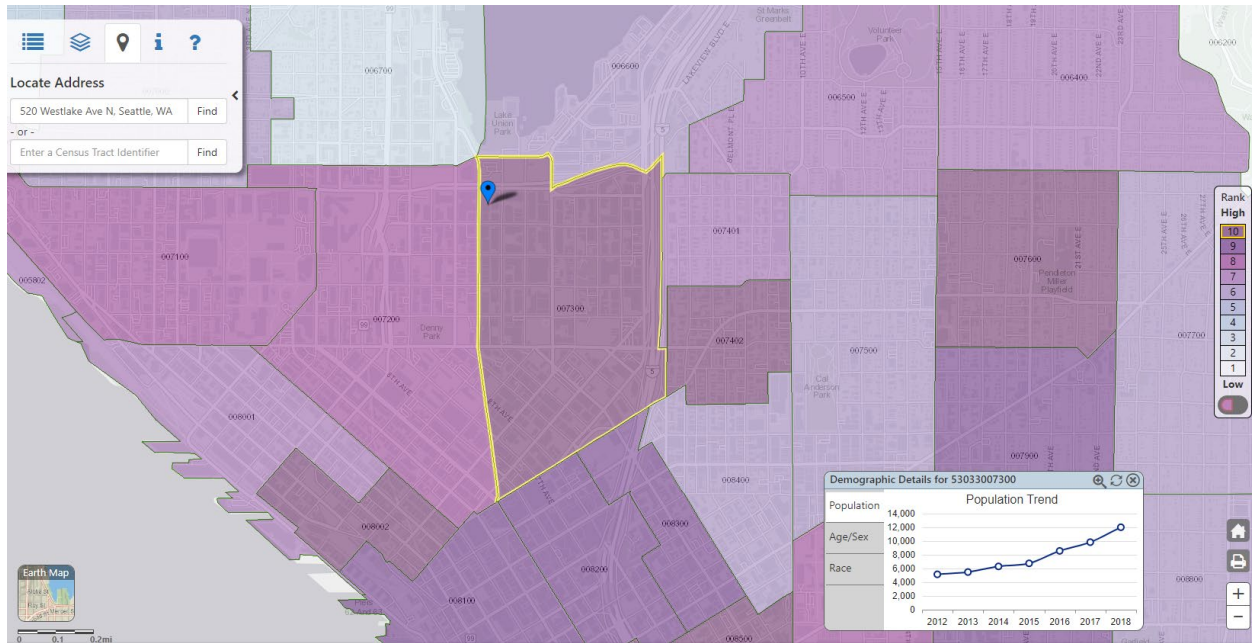


Figure 7: Washington Environmental Health Disparities Map for the Block 38 West census tract 007300

EJScreen

The [Environmental Justice Screening and Mapping Tool \(EJScreen\)](https://ejscreen.epa.gov/mapper/index.html)¹² has been developed by the Environmental Protection Agency (EPA). It is based on nationally consistent data and an approach that combines environmental and demographic indicators in maps and reports. Ecology uses this information to tailor its communications to the needs of communities through various means. These include developing language translations and identifying the need for interpreters. Ecology translates materials like fact sheets into languages that are spoken by 5% or more of the local community and considers accommodations when socio-economic indicators are above the EPA 80th percentile in-state threshold.

¹² <https://ejscreen.epa.gov/mapper/index.html>

The data below was generated for a quarter-mile radius around the Site using the EJScreen. See Appendix B for the “EPA EJScreen Community Report” and Figure 8 for the screened area.

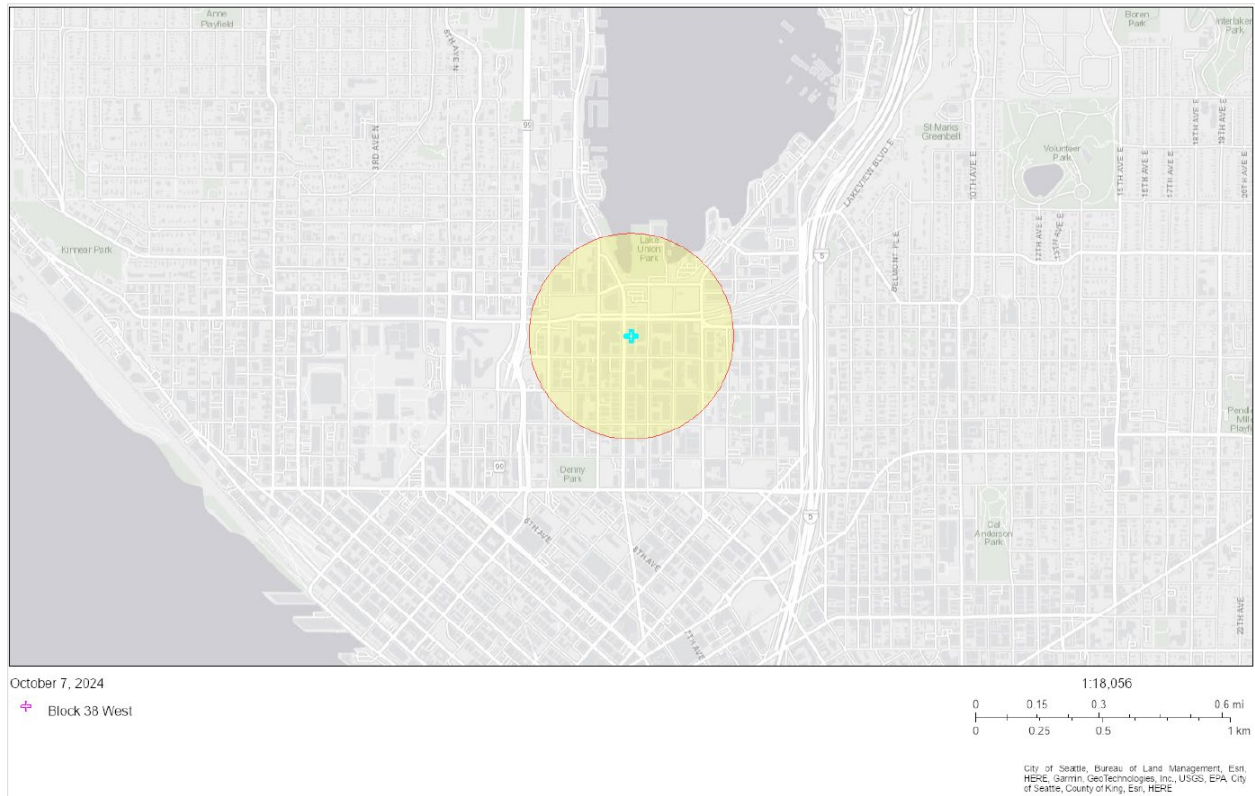


Figure 8: EPA EJScreen generated map of the outreach impact for the Block 38 West Site

The data from the Block 38 West outreach area reveals a diverse population. The EPA “Limited English-Speaking Households” socio-economic indicator falls at the 70th percentile in the state. 9% of the population in this area speaks English less than very well and 12% of the population speaks Chinese at home, which meets the EPA’s 5% threshold for translations or interpretation. This information validates the need to support community language needs and connect with community groups.

Ecology will reach out to cultural community organizations as part of our outreach and provide information in other languages as appropriate following federal guidance.¹³ The non-English language most widely spoken in this area is Chinese. When appropriate, Ecology will provide outreach in Chinese. To request information in another language, call Kristen Forkeutis at 425-240-4353, and wait on the line while we get an interpreter connected.

¹³ Guidance to Environmental Protection Agency Financial Assistance Recipients Regarding Title VI Prohibition Against National Origin Discrimination Affecting Limited English Proficient Persons, 69 Fed. Reg. § 35602 (June 15, 2004).

Public Participation Activities

Members of the public may ask questions, submit informal comments, or share site information at any time. Interested parties do not need to wait for a formal public comment period to contact Ecology.

However, to be included in the formal site record, comments about the site investigation, cleanup alternatives, or cleanups must be submitted during formal comment periods. In addition, the public is invited to review site documents before they become final. This is the most direct and influential way to learn more about the site and be involved in the cleanup's decision-making.

How we share information with the community

During specific stages of the cleanup, Ecology will mail notices about public comment periods to addresses surrounding the site. The mailing list area will include addresses within at least a half-mile radius of the site and other interested organizations and individuals. These notices will provide general information about the site, contact information for submitting comments, and times and locations of public meetings or hearings or how to request one if not yet scheduled.

Ecology may also develop documents outside of comment periods to keep the community updated on the site's status. These informational documents will be available online and at document repositories. Print copies may be mailed to the nearby community if we feel the message warrants the associated cost and resources.

Comment period notices and other site announcements may also be posted in various locations throughout the community (for example, local businesses, schools, libraries).

Postal mailing list

Ecology maintains a mailing list that includes addresses within at least a quarter-mile radius of the site and relevant local, state, and federal government contacts. This list receives public comment notices when draft documents are available.

We will add additional individuals, organizations, and other interested parties to the mailing list as requested. If you would like to be added to the mailing list for this site, please contact Kristen Forkeutis at 425-240-4353 or Kristen.Forkeutis@ecy.wa.gov.

Contaminated Site Register

Public comment periods, events, and other cleanup notices are published in Ecology's [Contaminated Site Register](#).¹⁴ To receive the *Contaminated Site Register* by email, please

¹⁴ <https://ecology.wa.gov/Regulations-Permits/Guidance-technical-assistance/Site-Register-lists-and-data>

[subscribe online](#),¹⁵ or contact Sarah Kellington at sarah.kellington@ecy.wa.gov or 360-280-3167.

Newspaper display ads or legal notices

When MTCA requires, we will announce public comment periods and events for this site in ads or notices published in [The Seattle Times](#).¹⁶

Email lists

Ecology maintains an email list to update interested persons about this site. If you would like to be added to the email list for this site, please [subscribe online](#),¹⁷ or contact Kristen Forkeutis, Outreach Specialist, by phone at 425-240-4353 or email at Kristen.Forkeutis@ecy.wa.gov.

Ecology's website and social media platforms

We maintain a website for the [Block 38 West site](#).¹⁸ The website provides site information, and you may download cleanup documents.

We will also publish notice on our [Public Input & Events Listing](#).¹⁹

We may also share information about cleanup sites through [news releases, our ECOconnect blog, and social media](#).²⁰

Places to see print documents

During public comment periods when review locations are accessible, you can find print documents at the following locations:

Seattle Public Library, Central Branch

1000 4th Ave
Seattle, WA 98104
Phone: 206-386-4636

Washington Department of Ecology

Northwest Region Office
15700 Dayton Ave N
Shoreline, WA 98133

To schedule an appointment, please contact the Northwest Region Office Central Records staff at (206) 594-0016 or nwro_public_request@ecy.wa.gov.

¹⁵ <https://ecology.wa.gov/site-register>

¹⁶ <https://www.seattletimes.com/>

¹⁷ https://public.govdelivery.com/accounts/WAECY/subscriber/new?topic_id=WAECY_229&pop=t

¹⁸ <https://apps.ecology.wa.gov/cleanupsearch/site/15008>

¹⁹ <https://ecology.wa.gov/Events/Search/Listing>

²⁰ <https://ecology.wa.gov/about-us/who-we-are/news>

If you would like to be mailed print documents, please contact Kristen Forkeutis at 425-240-4353 or Kristen.Forkeutis@ecy.wa.gov.

Signs around the cleanup site

We may also install signs displaying information about project status, traffic impacts, and health risks around the cleanup site.

How to share information with us

At minimum, MTCA requires 30-day public comment periods for draft cleanup documents and 14-day comment periods SEPA documents. SEPA documents are often made available for public review with other cleanup documents. In that case, we combine the comment periods, and they last at least 30 days. We may hold comment periods longer than 30 days.

We may also identify public concerns and cleanup goals by meeting with and soliciting information from interested community members and organizations. To collaborate with us about this site, please contact Kristen Forkeutis, Outreach Specialist, at 425-240-4353 or Kristen.Forkeutis@ecy.wa.gov.

Public comment periods

Formal 30-day comment periods allow interested members of the public to comment on draft documents, legal agreements, and proposed cleanup actions. If there is significant interest, Ecology may extend the public comment period. When Ecology oversees SEPA determinations, we hold comment periods for at least two weeks and may extend to 30 days or more when other cleanup documents are concurrently available for review.

Following the comment period, we publish all the input we received and respond to significant comments and questions, as appropriate. If the comments result in significant changes to the cleanup documents, then the documents will be revised and re-issued for public review. If the comments do not result in significant changes, then they become final.

Public events

We hold in-person and online public meetings, workshops, open houses, and public hearings based on community interest. If we have not scheduled a meeting, we will hold one if ten people request it. This may cause us to extend a public comment period, so the meeting occurs during it.

Events are held at locations close to the site that meet Americans with Disabilities Act standards. Public meetings, workshops, open houses, and hearings are always announced in advance using a variety of methods.

Plan Amendments

Ecology developed this plan following MTCA regulations (WAC 173-340-600). We review it as the cleanup progresses and amend it as necessary. You may suggest amendments to Kristen Forkeutis, Outreach Specialist, at 425-240-4353 or Kristen.Forkeutis@ecy.wa.gov.

This plan includes information for the public regarding opportunities for public involvement and comment. The outreach activities discussed in this section reflect Ecology's current plans for keeping the public informed and providing ways for those interested in the site to communicate their concerns and questions to us.

If you feel the planned outreach activities and mechanisms described in this plan are insufficient, or should otherwise be modified, we will work to find solutions. New outreach activities or outreach tools established as a result can be implemented right away, with or without amending this plan.

Appendices

Appendix A. Steps in the MTCA cleanup process

The cleanup process is defined in the Model Toxics Control Act (MTCA), Washington's cleanup law. See the attached, accessible PDF for details.

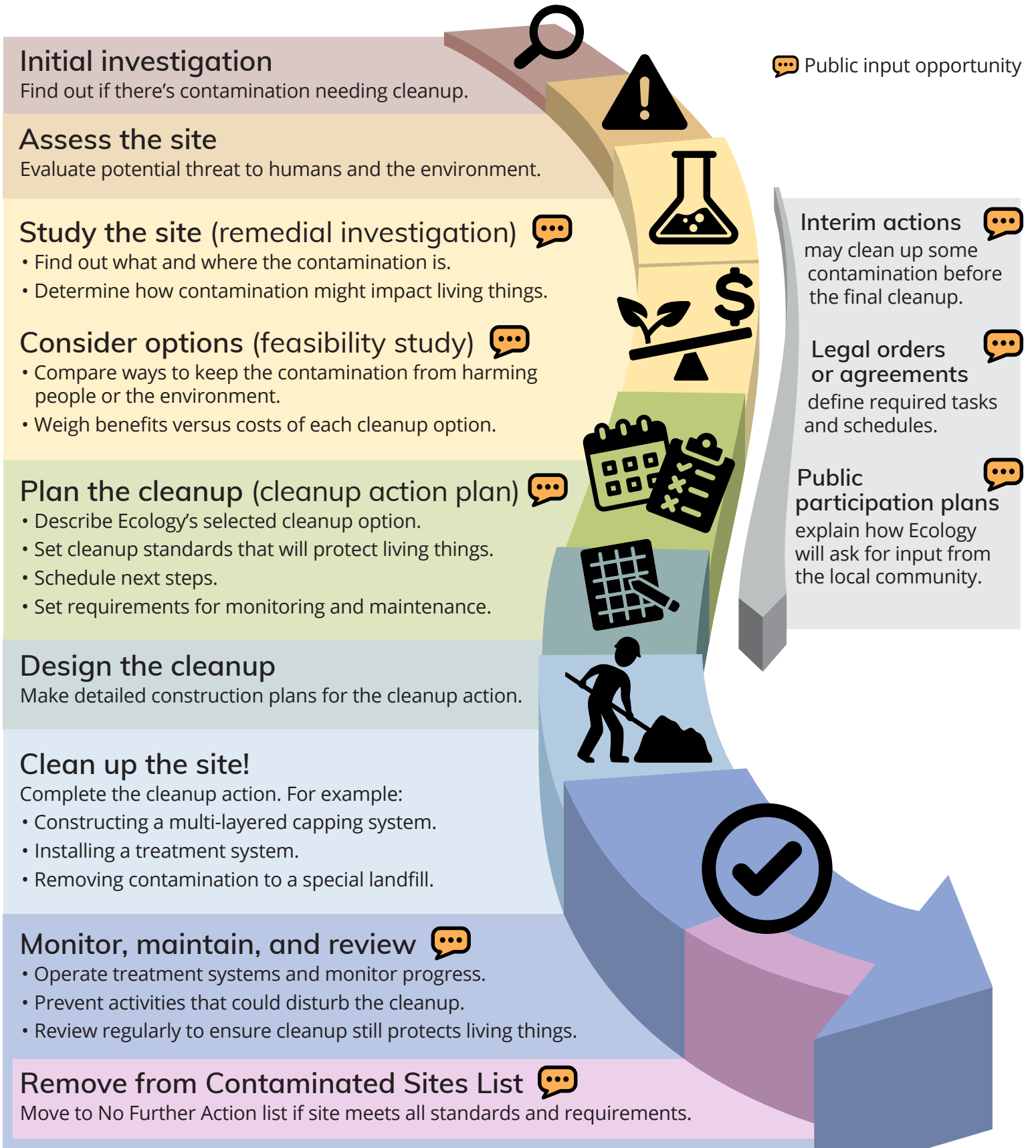
Appendix B. EPA EJScreen Community Report & ACS Summary Report

EPA's EJScreen report for a quarter-mile radius around the Block 38 West Site.

Washington's Cleanup Process



Public participation plans and comment periods are only required for cleanups under a legal agreement with Ecology. Otherwise, all cleanups follow the same steps. The steps are defined by Washington's cleanup law, the Model Toxics Control Act.





EJScreen Community Report

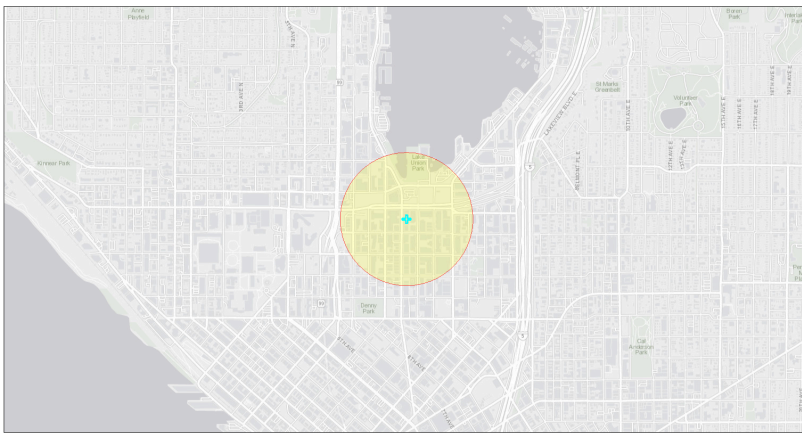
This report provides environmental and socioeconomic information for user-defined areas, and combines that data into environmental justice and supplemental indexes.

Block 38 West

.25 miles Ring Centered at 47.623955,-122.338042

Population: 2,164

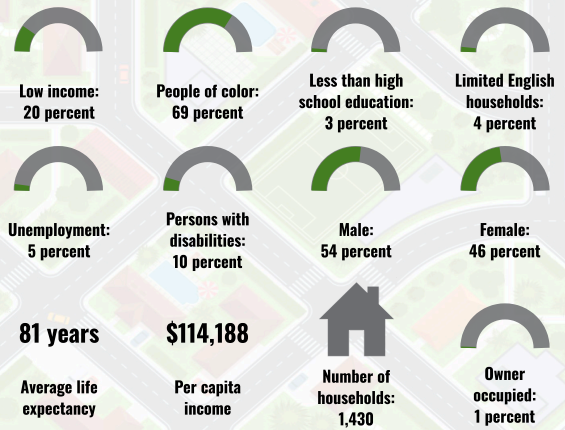
Area in square miles: 0.20



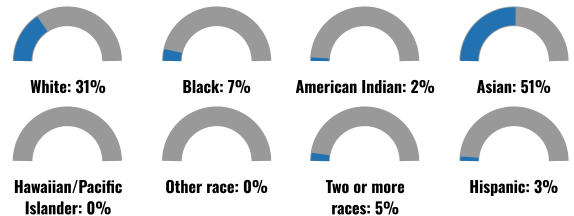
October 7, 2024
Block 38 West

1:18,056
0 0.15 0.3 0.6 mi
0 0.25 0.5 1 km
City of Seattle, Bureau of Land Management, Esri, HERE, Garmin, GeoTechnology, Inc., USGS, EPA, City of Seattle, County of King, Esri, HERE

COMMUNITY INFORMATION



BREAKDOWN BY RACE



BREAKDOWN BY AGE



LIMITED ENGLISH SPEAKING BREAKDOWN



LANGUAGES SPOKEN AT HOME

LANGUAGE	PERCENT
English	63%
Spanish	2%
Russian, Polish, or Other Slavic	5%
Other Indo-European	9%
Chinese (including Mandarin, Cantonese)	12%
Vietnamese	1%
Tagalog (including Filipino)	1%
Other Asian and Pacific Island	6%
Other and Unspecified	1%
Total Non-English	37%

Notes: Numbers may not sum to totals due to rounding. Hispanic population can be of any race. Source: U.S. Census Bureau American Community Survey (ACS) 2018-2022. Life expectancy data comes from the Centers for Disease Control.

Report for .25 miles Ring Centered at 47.623955,-122.338042

Report produced October 7, 2024 using EJScreen Version 2.3

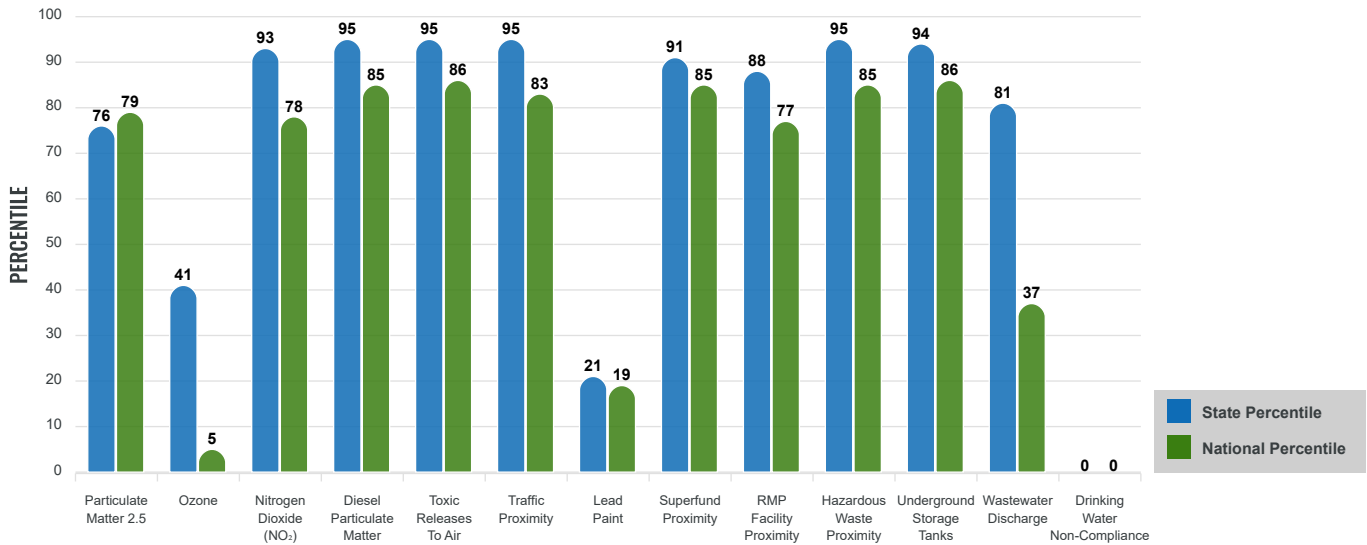
Environmental Justice & Supplemental Indexes

The environmental justice and supplemental indexes are a combination of environmental and socioeconomic information. There are thirteen EJ indexes and supplemental indexes in EJScreen reflecting the 13 environmental indicators. The indexes for a selected area are compared to those for all other locations in the state or nation. For more information and calculation details on the EJ and supplemental indexes, please visit the [EJScreen website](#).

EJ INDEXES

The EJ indexes help users screen for potential EJ concerns. To do this, the EJ index combines data on low income and people of color populations with a single environmental indicator.

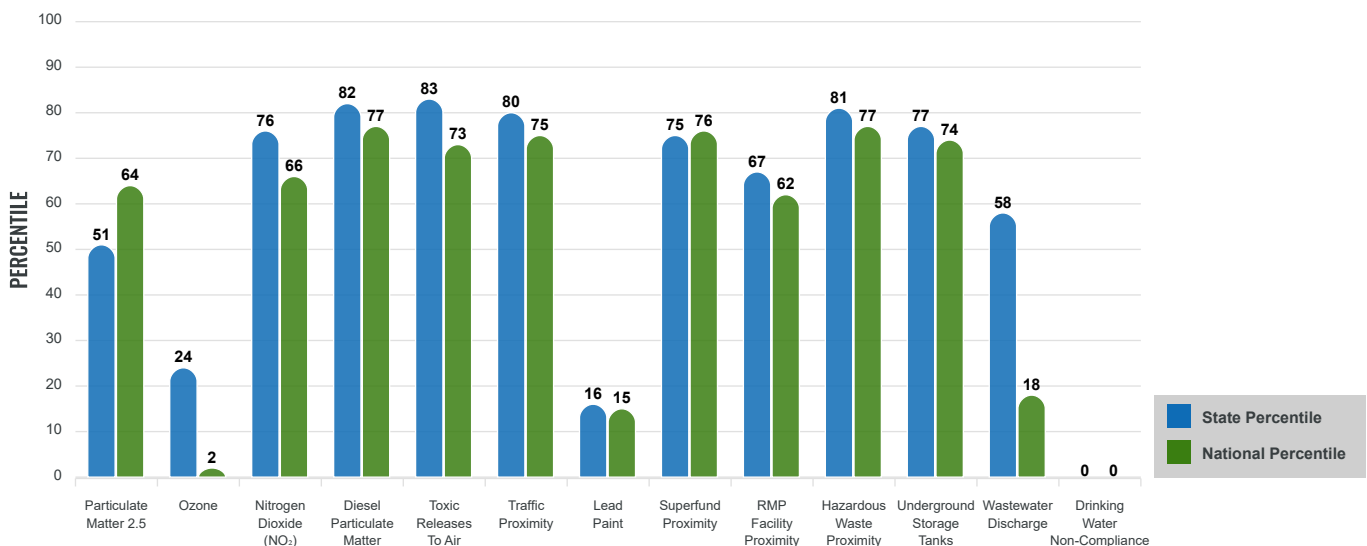
EJ INDEXES FOR THE SELECTED LOCATION



SUPPLEMENTAL INDEXES

The supplemental indexes offer a different perspective on community-level vulnerability. They combine data on percent low income, percent persons with disabilities, percent less than high school education, percent limited English speaking, and percent low life expectancy with a single environmental indicator.

SUPPLEMENTAL INDEXES FOR THE SELECTED LOCATION



Report for .25 miles Ring Centered at 47.623955,-122.338042

Report produced October 7, 2024 using EJScreen Version 2.3

EJScreen Environmental and Socioeconomic Indicators Data

SELECTED VARIABLES	VALUE	STATE AVERAGE	PERCENTILE IN STATE	USA AVERAGE	PERCENTILE IN USA
ENVIRONMENTAL BURDEN INDICATORS					
Particulate Matter 2.5 (µg/m ³)	9.11	9.51	49	8.45	77
Ozone (ppb)	50.2	51.8	21	61.8	2
Nitrogen Dioxide (NO ₂) (ppbv)	11	6.3	96	7.8	79
Diesel Particulate Matter (µg/m ³)	0.936	0.256	99	0.191	99
Toxic Releases to Air (toxicity-weighted concentration)	8,300	1,800	96	4,600	91
Traffic Proximity (daily traffic count/distance to road)	6,200,000	1,200,000	99	1,700,000	94
Lead Paint (% Pre-1960 Housing)	0.012	0.23	17	0.3	16
Superfund Proximity (site count/km distance)	0.96	0.53	87	0.39	91
RMP Facility Proximity (facility count/km distance)	0.75	0.51	76	0.57	74
Hazardous Waste Proximity (facility count/km distance)	27	2.9	99	3.5	98
Underground Storage Tanks (count/km ²)	100	6.1	99	3.6	99
Wastewater Discharge (toxicity-weighted concentration/m distance)	0.67	300	58	700000	20
Drinking Water Non-Compliance (points)	0	1	0	2.2	0
SOCIOECONOMIC INDICATORS					
Demographic Index USA	1.56	N/A	N/A	1.34	65
Supplemental Demographic Index USA	1.21	N/A	N/A	1.64	29
Demographic Index State	2.22	1.47	83	N/A	N/A
Supplemental Demographic Index State	1.13	1.37	40	N/A	N/A
People of Color	69%	33%	92	40%	77
Low Income	20%	23%	50	30%	38
Unemployment Rate	5%	5%	63	6%	62
Limited English Speaking Households	4%	4%	70	5%	72
Less Than High School Education	3%	8%	32	11%	25
Under Age 5	2%	5%	16	5%	19
Over Age 64	5%	17%	10	18%	10

*Diesel particulate matter index is from the EPA's Air Toxics Data Update, which is the Agency's ongoing, comprehensive evaluation of air toxics in the United States. This effort aims to prioritize air toxics, emission sources, and locations of interest for further study. It is important to remember that the air toxics data presented here provide broad estimates of health risks over geographic areas of the country, not definitive risks to specific individuals or locations. More information on the Air Toxics Data Update can be found at: <https://www.epa.gov/haps/air-toxics-data-update>.

Sites reporting to EPA within defined area:

Superfund	0
Hazardous Waste, Treatment, Storage, and Disposal Facilities	5
Water Dischargers	6
Air Pollution	1
Brownfields	0
Toxic Release Inventory	1

Other community features within defined area:

Schools	0
Hospitals	0
Places of Worship	0

Other environmental data:

Air Non-attainment	No
Impaired Waters	Yes

Selected location contains American Indian Reservation Lands*	No
Selected location contains a "Justice40 (CEJST)" disadvantaged community	No
Selected location contains an EPA IRA disadvantaged community	Yes

Report for .25 miles Ring Centered at 47.623955,-122.338042
 Report produced October 7, 2024 using EJScreen Version 2.3

EJScreen Environmental and Socioeconomic Indicators Data

HEALTH INDICATORS

INDICATOR	VALUE	STATE AVERAGE	STATE PERCENTILE	US AVERAGE	US PERCENTILE
Low Life Expectancy	18%	18%	45	20%	34
Heart Disease	2.6	4.8	6	5.8	2
Asthma	9.6	10.9	8	10.3	33
Cancer	4.4	6.5	6	6.4	12
Persons with Disabilities	10.3%	13.4%	32	13.7%	32

CLIMATE INDICATORS

INDICATOR	VALUE	STATE AVERAGE	STATE PERCENTILE	US AVERAGE	US PERCENTILE
Flood Risk	8%	11%	60	12%	57
Wildfire Risk	0%	12%	0	14%	0

CRITICAL SERVICE GAPS

INDICATOR	VALUE	STATE AVERAGE	STATE PERCENTILE	US AVERAGE	US PERCENTILE
Broadband Internet	1%	8%	21	13%	15
Lack of Health Insurance	6%	6%	54	9%	43
Housing Burden	No	N/A	N/A	N/A	N/A
Transportation Access Burden	No	N/A	N/A	N/A	N/A
Food Desert	No	N/A	N/A	N/A	N/A

Report for .25 miles Ring Centered at 47.623955,-122.338042
 Report produced October 7, 2024 using EJScreen Version 2.3

Location: User-specified point center at 47.623955, -122.338042
 Ring (buffer): .25-miles radius
 Description: Block 38 West

Summary of ACS Estimates		2018 - 2022
Population		2,164
Population Density (per sq. mile)		11,526
People of Color Population		1,489
% People of Color Population		69%
Households		1,430
Housing Units		1,432
Housing Units Built Before 1950		0
Per Capita Income		114,188
Land Area (sq. miles) (Source: SF1)		0.19
% Land Area		85%
Water Area (sq. miles) (Source: SF1)		0.03
% Water Area		15%

	2018 - 2022 ACS Estimates	Percent	MOE (±)
Population by Race			
Total	2,164	100%	431
Population Reporting One Race	2,050	95%	1,127
White	693	32%	406
Black	162	7%	160
American Indian	33	2%	92
Asian	1,110	51%	380
Pacific Islander	0	0%	13
Some Other Race	52	2%	76
Population Reporting Two or More Races	114	5%	89
Total Hispanic Population	71	3%	78
Total Non-Hispanic Population	2,093		
White Alone	675	31%	405
Black Alone	162	7%	160
American Indian Alone	33	2%	92
Non-Hispanic Asian Alone	1,110	51%	380
Pacific Islander Alone	0	0%	13
Other Race Alone	0	0%	13
Two or More Races Alone	113	5%	89
Population by Sex			
Male	1,163	54%	359
Female	1,001	46%	328
Population by Age			
Age 0-4	33	2%	83
Age 0-17	67	3%	88
Age 18+	2,097	97%	384
Age 65+	119	5%	157

Data Note: Detail may not sum to totals due to rounding. Hispanic population can be of any race.

N/A means not available. **Source:** U.S. Census Bureau, American Community Survey (ACS) 2018 - 2022

Location: User-specified point center at 47.623955, -122.338042

Ring (buffer): .25-miles radius

Description: Block 38 West

	2018 - 2022 ACS Estimates	Percent	MOE (±)
Population 25+ by Educational Attainment			
Total	1,706	100%	376
Less than 9th Grade	51	3%	155
9th - 12th Grade, No Diploma	0	0%	46
High School Graduate	150	9%	87
Some College, No Degree	132	8%	108
Associate Degree	23	1%	69
Bachelor's Degree or more	1,350	79%	336
Population Age 5+ Years by Ability to Speak English			
Total	2,130	100%	408
Speak only English	1,029	48%	361
Non-English at Home ¹⁺²⁺³⁺⁴	1,102	52%	422
¹ Speak English "very well"	915	43%	378
² Speak English "well"	152	7%	185
³ Speak English "not well"	35	2%	92
⁴ Speak English "not at all"	0	0%	45
³⁺⁴ Speak English "less than well"	35	2%	102
²⁺³⁺⁴ Speak English "less than very well"	187	9%	196
Limited English Speaking Households*			
Total	55	100%	179
Speak Spanish	0	0%	13
Speak Other Indo-European Languages	1	1%	56
Speak Asian-Pacific Island Languages	32	58%	178
Speak Other Languages	23	41%	71
Households by Household Income			
Household Income Base	1,430	100%	241
< \$15,000	62	4%	85
\$15,000 - \$25,000	58	4%	49
\$25,000 - \$50,000	101	7%	87
\$50,000 - \$75,000	103	7%	83
\$75,000 +	1,105	77%	314
Occupied Housing Units by Tenure			
Total	1,430	100%	241
Owner Occupied	10	1%	73
Renter Occupied	1,420	99%	242
Employed Population Age 16+ Years			
Total	2,097	100%	408
In Labor Force	1,759	84%	358
Civilian Unemployed in Labor Force	93	5%	83
Not In Labor Force	338	16%	202

Data Note: Detail may not sum to totals due to rounding. Hispanic population can be of anyrace.

N/A means not available. **Source:** U.S. Census Bureau, American Community Survey (ACS)

*Households in which no one 14 and over speaks English "very well" or speaks English only.

Location: User-specified point center at 47.623955, -122.338042

Ring (buffer): .25-miles radius

Description: Block 38 West

	2018 - 2022 ACS Estimates	Percent	MOE (±)
Population by Language Spoken at Home*			
Total (persons age 5 and above)	3,866	100%	540
English	2,430	63%	562
Spanish	76	2%	84
French, Haitian, or Cajun	15	0%	52
German or other West Germanic	0	0%	13
Russian, Polish, or Other Slavic	192	5%	412
Other Indo-European	339	9%	209
Korean	10	0%	54
Chinese (including Mandarin, Cantonese)	457	12%	253
Vietnamese	22	1%	52
Tagalog (including Filipino)	33	1%	79
Other Asian and Pacific Island	247	6%	261
Arabic	0	0%	13
Other and Unspecified	45	1%	71
Total Non-English	1,436	37%	779

Data Note: Detail may not sum to totals due to rounding. Hispanic population can be of any race.
N/A means not available. **Source:** U.S. Census Bureau, American Community Survey (ACS) 2018 - 2022.
*Population by Language Spoken at Home is available at the census tract summary level and up.