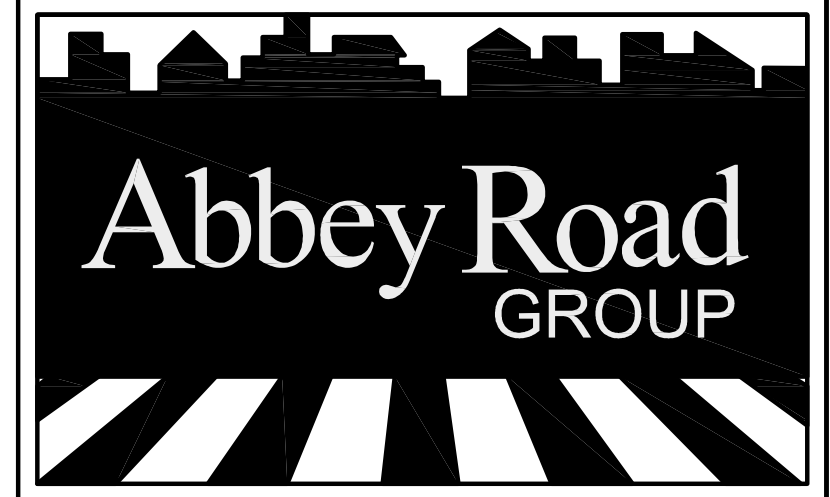


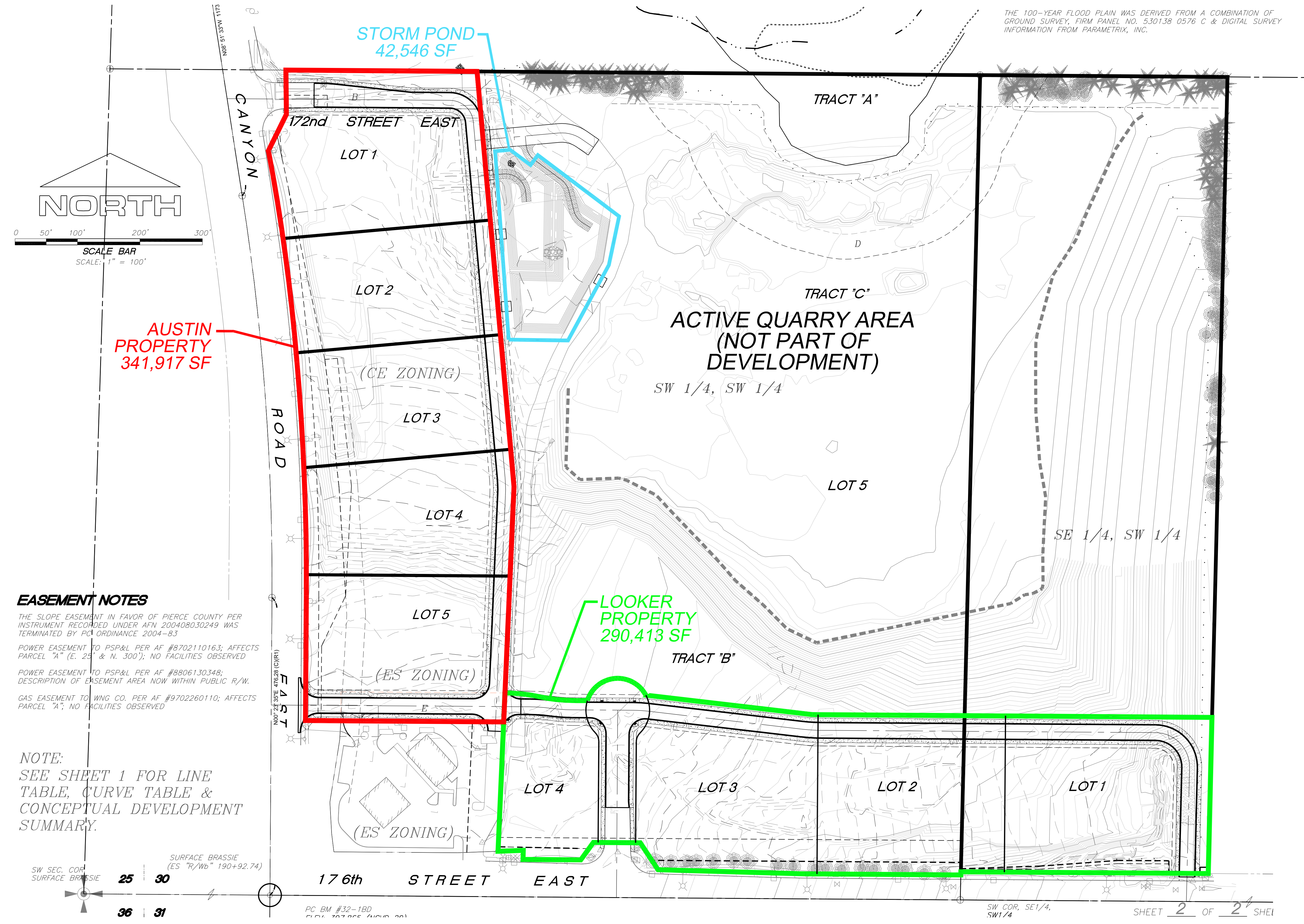
# LOOKER / AUSTIN AGREEMENT

SEC 26 / TWN 20N / RGE 04E

SITE PLAN PROPERTY EXHIBIT - PROPOSED



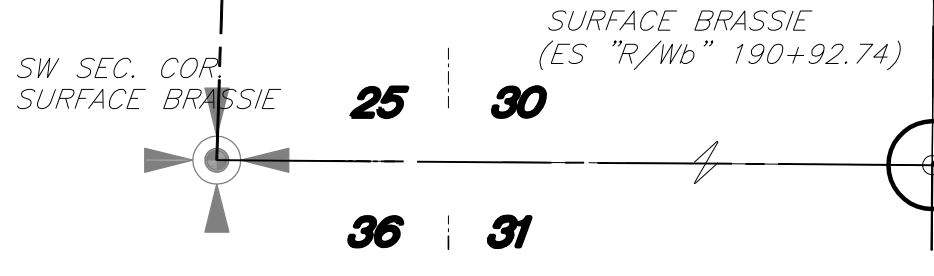
THE 100-YEAR FLOOD PLAIN WAS DERIVED FROM A COMBINATION OF GROUND SURVEY, FIRM PANEL NO. 530138 0576 C & DIGITAL SURVEY INFORMATION FROM PARAMETRIX, INC.



### EASEMENT NOTES

THE SLOPE EASEMENT IN FAVOR OF PIERCE COUNTY PER INSTRUMENT RECORDED UNDER AFN 200408030249 WAS TERMINATED BY PC ORDINANCE 2004-83  
POWER EASEMENT TO PSP&L PER AF #8702110163; AFFECTS PARCEL "A" (E. 25' & N. 300'); NO FACILITIES OBSERVED  
POWER EASEMENT TO PSP&L PER AF #8806130348; DESCRIPTION OF EASEMENT AREA NOW WITHIN PUBLIC R/W.  
GAS EASEMENT TO WING CO. PER AF #9702260110; AFFECTS PARCEL "A"; NO FACILITIES OBSERVED

NOTE:  
SEE SHEET 1 FOR LINE TABLE, CURVE TABLE & CONCEPTUAL DEVELOPMENT SUMMARY.



PC BM #32-1BD  
ELEV. 107.85' (GICD 00)

SW COR. SE1/4, SW1/4

SHEET 2 OF 2 SHEETS

