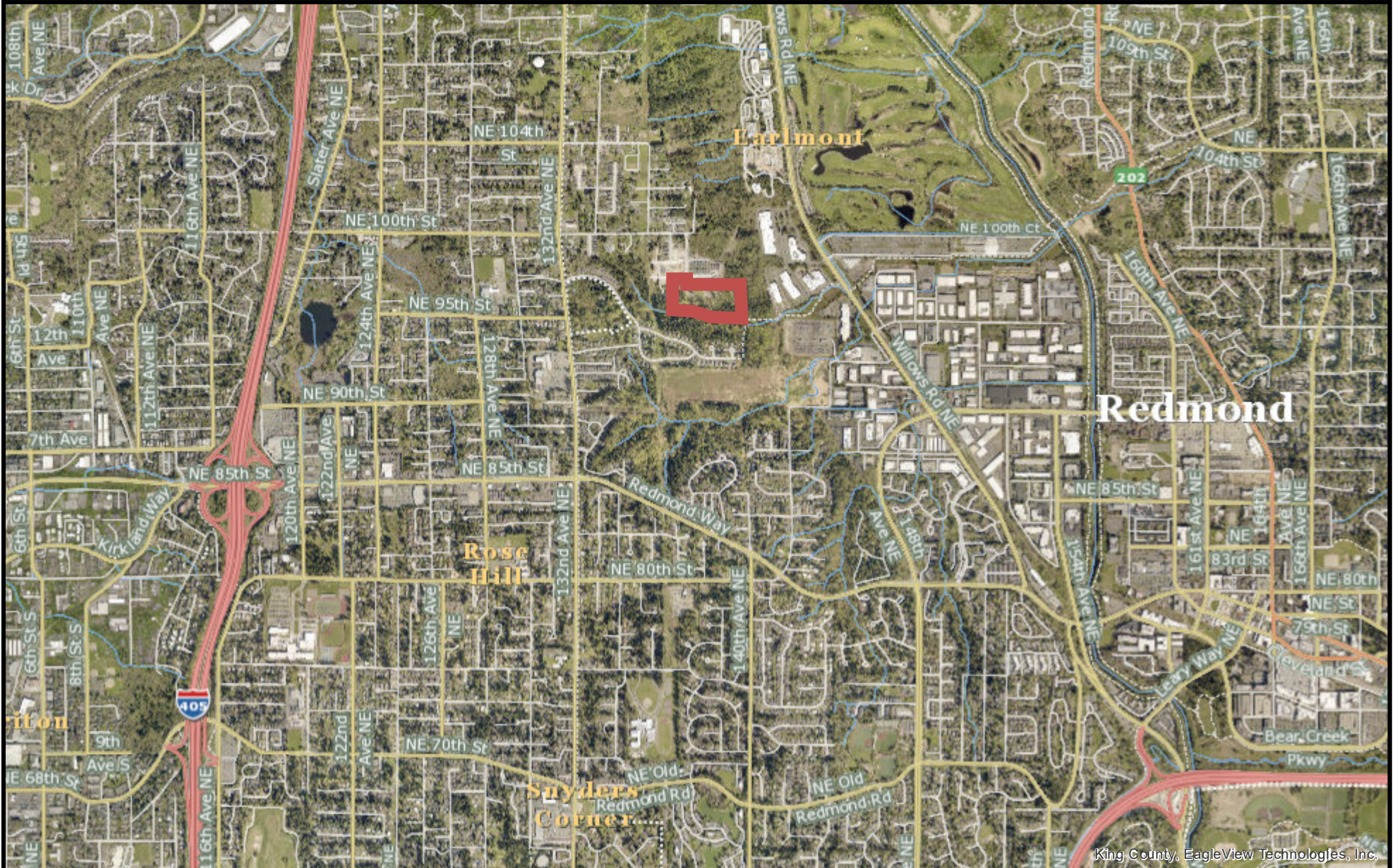


Interlake Sporting Assn Location



The information included on this map has been compiled by King County staff from a variety of sources and is subject to change without notice. King County makes no representations or warranties, express or implied, as to accuracy, completeness, timeliness, or rights to the use of such information. This document is not intended for use as a survey product. King County shall not be liable for any general, special, indirect, incidental, or consequential damages including, but not limited to, lost revenues or lost profits resulting from the use or misuse of the information contained on this map. Any sale of this map or information on this map is prohibited except by written permission of King County.

Date: 6/6/2024

Notes:



King County

Interlake Sporting Association



Interlake Sporting Association

- Approximate photo location
- ↑ Approximate direction of photo

The information included on this map has been compiled by King County staff from a variety of sources and is subject to change without notice. King County makes no representations or warranties, express or implied, as to accuracy, completeness, timeliness, or rights to the use of such information. This document is not intended for use as a survey product. King County shall not be liable for any general, special, indirect, incidental, or consequential damages including, but not limited to, lost revenues or lost profits resulting from the use or misuse of the information contained on this map. Any sale of this map or information on this map is prohibited except by written permission of King County.

Date: 3/7/2024 Notes:





Interlake Sporting Association

● Approximate sample location

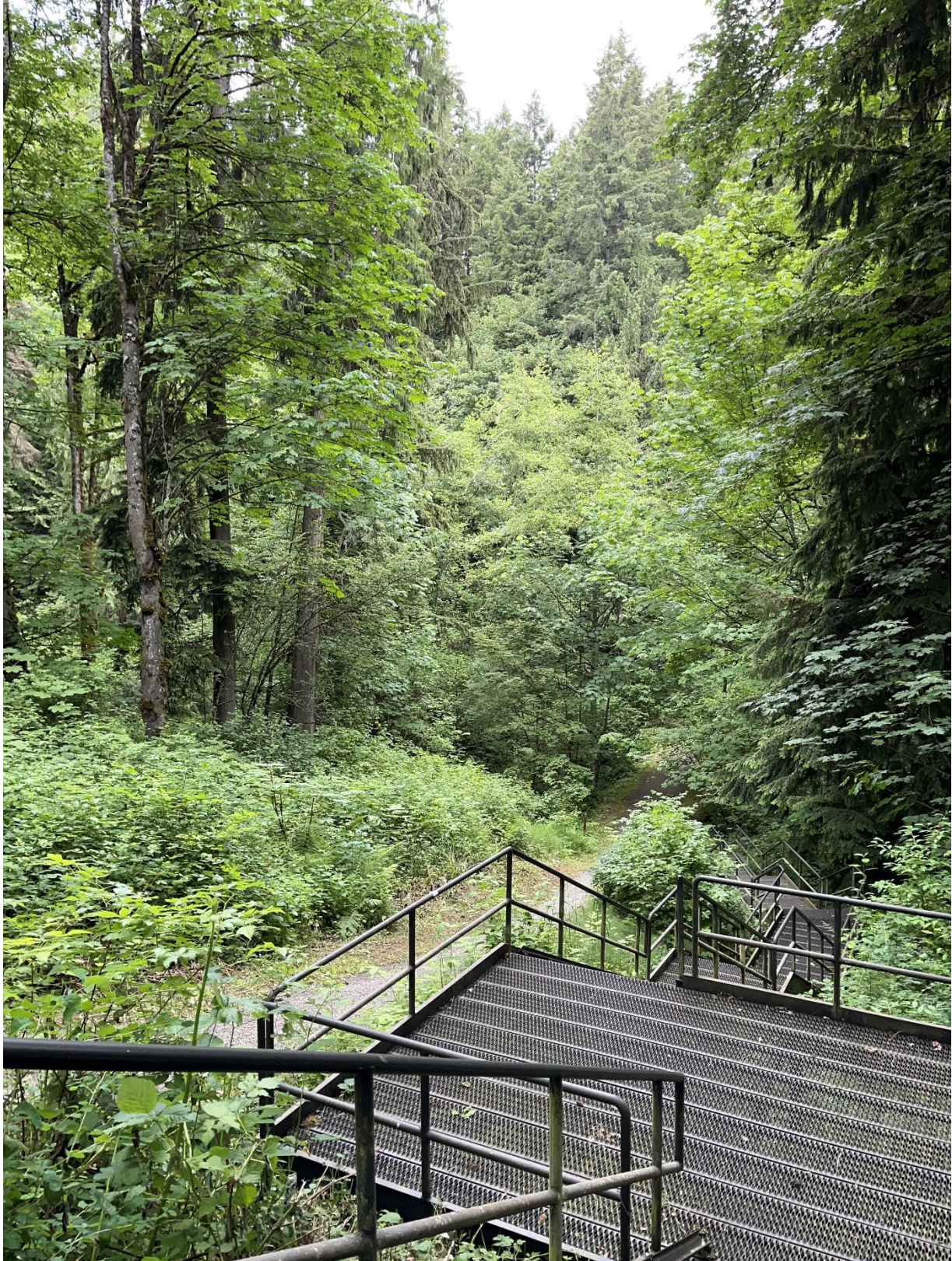


Photo 1. Ravine south of Interlake Sporting Association, looking north-northwest from footpath. June 10, 2024.



Photo 2. Gun Club Tributary, looking west from footpath. View of the water is obscured by bushes. June 10, 2024.

Soil/Sediment and Water Data
Interlake Sporting Association

Sample No.	Date	Result	Units
Bog 1	4/22/24	1,800	mg/kg
Bog 2	4/22/24	1,900	
Bog 3 (Pole 41)	5/9/24	990	
Bog 4 (Pole 1)	5/9/24	31	
Culvert	4/22/24	53	
Creek bank	11/12/23	330	
Creek bed	11/12/23	76	
Method A soil		250	
Benthic sediment cleanup screening level		1,300	
Water	11/12/23	1	ug/L
Aquatic life criterion		2.5	
Method A groundwater		15	