

**PHASE I
ENVIRONMENTAL SITE ASSESSMENT
REPORT**

for

**Cora Avenue Well Site
Spokane, WA**

Prepared For

City of Spokane

February 16, 2015

TECHCON, INC.

915 West 2nd Avenue

Spokane, WA 99201

Tel: (509) 536-0406 • Fax (509) 536-0565

Consultants • Environmental Specialists • Project Managers



CONTENTS

1.	SUMMARY	1-1
2.	INTRODUCTION	2-1
	2.1 Purpose	
	2.2 Special Terms and Conditions	
	2.3 Limitations and Exceptions of Assessment	
	2.4 Limiting Conditions and Methodology Used	
3.	SITE DESCRIPTION	3-1
	3.1 Location and Legal Description	
	3.2 Site and Vicinity Characteristics	
	3.3 Description of Improvements	
	3.4 Environmental Liens	
	3.5 Current Property Uses	
	3.6 Past Uses of the Property	
	3.7 Adjoining Properties	
4.	RECORDS REVIEW	4-1
	4.1 Standard Environmental Sources	
	4.2 Physical Setting Sources	
	4.3 Historical Use Information	
5.	SITE RECONNAISSANCE	5-1
6.	FINDINGS AND CONCLUSIONS	6-1
7.	CERTIFICATION STATEMENT	7-1

APPENDICES

- ▲ Appendix A - Maps and Other Documents
- ▲ Appendix B - Site Photographs
- ▲ Appendix C - Scope of Work
- ▲ Appendix D - Environmental Certifications



Section 1.0

SUMMARY

TechCon, Inc. (TechCon) has completed a Phase I Environmental Site Assessment (Phase I) for the subject site, a vacant parcel located in the west 700 block of Cora Avenue, Spokane, WA. The subject site is excess land on the west end of the Faith Bible Church campus. This report presents the results of that review as outlined in the Scope of Work in *Appendix C*. Below is a summary of the items reviewed for this Phase I.

1.1 Certified Environmental Professionals: The individual who conducted this investigation is Daniel Autrey, a Certified Environmental Inspector and Registered Environmental Assessor. Mr. Autrey and the technical professionals who assisted him, have years of experience in the environmental and engineering fields. In addition, they have been actively performing or managing Phase I, II and III Environmental Site Assessments, hazardous waste projects, and soil remediation projects since 1992. We declare that to the best of our professional knowledge and belief, we meet the definition of *Environmental Professionals* as defined in §312.19 of 40 CFR 312. We have the specific qualifications based on education, training, and experience to assess a property of the nature, history, and setting of the subject property. We have developed and performed all the appropriate inquiries in conformance with the standards and practices set forth in 40 CFR Part 312.

1.2 Scope of Work: A summary of the project Scope of Work is included in the Appendix Section. The Scope of Work provided below briefly explains some of the activities that may be performed in the evaluation of the environmental conditions at the property.

1.2.1 Historical Review - This review identifies (1) property use from the present back to 1940, using standard historical sources and (2) uses prior to 1940, until a time when the property was not yet developed (development including the placement of fill upon



the property). The review uses at least one of the following standard historical sources: aerial photographs, fire insurance maps, property tax files, recorded land title records, USGS 7.5 minute topographic maps, local street directories, building department records, zoning/land use records or other credible historical sources.

- 1.2.2 Regulatory Agency Review - The agency review includes a survey of federal, state, and county regulatory files for evidence of enforcement actions, permits, registrations, or notification of site contamination. The review includes a search of the following federal and state governmental sources and the minimum search distance, as required by American Society of Testing and Material (ASTM) standards:

Regulatory Review List

Abbreviation	Name	Radius(Mi)
NPL	National Priorities List	1
CERCLIS	Comprehensive Environmental Response, Compensation and Liability Information System	.5
CERCLIS NFRAP	No Further Remedial Action Planned	.5
MTCA	Model Toxics Control Act Sites	1
UECA	Uniform Environmental Covenants Act Registry	Property
ERNS	Emergency Response Notification System	Property
UST	Underground Storage Tanks	Property/Adjoining
LUST	Leaking Underground Storage Tanks	.5
MWF	Municipal Waste Facilities	.5
RCRA	Resource Conservation & Recovery Act	Property/Adjoining
RCRA-TSD	RCRA TSD Facilities not subject to corrective action	1
CORRACT	RCRA Facilities subject to corrective action	1

- 1.2.3 Site Investigation - The site will be reviewed by a certified Environmental Professional. The Environmental Professional will observe and assess characteristics



of the property which pose or have potential to pose environmental problems. The review may, depending on the Scope of Work, include a survey of the following:

- ▲ *Underground Storage Tanks (USTs)* - USTs are acknowledged as a potentially significant source of environmental contamination. Contamination of soils can occur as a result of spills, overfills, or releases from these tanks. Groundwater contamination is typically caused by more aggressive release conditions such as leaking tanks, pipes, and delivery systems.

USTs can contain a variety of regulated or unregulated substances. A UST system includes the tank, underground piping, and underground ancillary equipment such as pumps, secondary containment systems, or monitoring equipment, if present.

- ▲ *Aboveground Storage Systems* - The hazards posed by aboveground storage systems are similar to those of USTs. These aboveground storage systems include aboveground storage tanks (ASTs), 55-gallon drums, and metal cans or plastic containers that serve as storage devices. ASTs can hold a variety of suspect products, and are found on construction sites, commercial property, industrial plants, oil refineries, and in and around residential houses. Any leaking aboveground storage system used to store petroleum products or other hazardous substances presents a risk of contaminating surface soils and groundwater. An aboveground storage system may also pose a fire/explosion hazard if it contains flammable, combustible, or reactive materials. An aboveground storage system can contain many different products including, but not limited to: cleaning solvents, waste oils, kerosene, engine oil, heating fuel, gasoline and diesel fuel, acids, pesticides, and liquid fertilizers.



Included in the investigation of an aboveground storage system are the devices that support such a system. For example, AST support systems may include the fill tubes, air vents, above or below delivery lines, transfer pumps, alarms, and leak detection or monitoring systems.

- ▲ *Sensitive Receptors* - A sensitive receptor is identified as a potential pathway for contamination to migrate down from the soil surface and impact the subsurface and groundwater environments. A few of the easily identifiable sensitive receptors include:
 - ▲ Drinking and groundwater monitoring wells
 - ▲ Drywells, catch basins, and sumps
 - ▲ Septic systems
 - ▲ Electrical utility conduits
 - ▲ City water and sewer lines
 - ▲ Trenches, culverts, and septic system lines

- ▲ *Surface Contamination* - Potential sources for surface contamination are significant because they can represent a continuing or sporadic source of contaminants. Drainage ditches, alleyways, storage areas, out-falls, air emission sources, and railroad tracks are among the things that serve as potential sources and/or conduits for contamination. Existing practices regarding waste products are reviewed, including storage and disposal. Stained soil or pavement is noted, as well as signs of distressed vegetation, odors, pools of liquids, and petroleum products.

- ▲ *Polychlorinated Biphenyl (PCB) Equipment* - PCBs are toxic molecules that, when ingested, attach themselves to human fat tissues and act as possible



carcinogens. In the past, PCBs were used in equipment such as transformers, capacitors, fluorescent ballasts, circuit breakers, and switch-gear systems. PCBs are found in equipment hydraulic fluids. Problems develop when these oils and/or fluids leak out of the equipment and contaminate the soil and groundwater. The Environmental Protection Agency (EPA) regulates PCB levels over 50 parts per million (ppm) in a transformer.

- ▲ *Pesticides and Herbicides* - Pesticides are chemical products developed to eradicate a target species. Pesticides include insecticides, herbicides, rodenticide, fungicides, and disinfectants. While these products significantly reduce agricultural crop losses and public health concerns (diseases), they pose a toxic health hazard if misused, not properly stored, or improperly disposed.

- ▲ *Lead-Based Paint* - In 1978, the United States banned the use of lead pigments in paints used on interior and exterior residential surfaces. However, lead-containing products are still available and legal for use on commercial and industrial projects. Field screening tests can determine the presence of lead products, but validation of the amount of lead content requires laboratory analysis of the paint chips or testing the surfaces by X-ray fluorescence. Screening for lead-based paint is not part of this Phase I Environmental Site Assessment.

Lead paint is currently regulated by the Occupational Safety and Health Administration (OSHA) and Washington Industrial Safety and Health Administration (WISHA). Current regulations in Washington require contractors to adhere to Washington Administrative Code (WAC) Chapter 296-155-176, Lead, prior to demolition.



- ▲ *Hazardous Waste* - The term "hazardous waste" refers to a large variety of chemical, biological, and radioactive substances. These substances pose health and safety risks to humans, vegetation, wildlife, and to the environment. Hazardous materials have the potential to cause contamination to a property or its surroundings should they be released to the environment through spills, fire, or intentional disposal. Improper disposal of hazardous substances can also result in contamination of soil, groundwater, or surface water.

Hazardous substances include chemicals used in industrial processes or liquids found in equipment such as X-ray machines, batteries, and electrical transformers. Some household products, such as soaps, detergents, and cleaners are classified as hazardous substances. Other products include solvents, paints, petroleum products, agricultural chemicals, and biological products.

The Hazard Communication Standard (HCS) is the name for the WAC Chapter 296-62-part C, which implements the Worker and Community Right to Know Act related to the workplace. The code sets requirements for information and training on hazardous chemicals used in the workplace when businesses have more than one worker. Federal law requires compliance with hazard communication regulations by requiring manufacturers, distributors, and users to label containers, provide Material Safety Data Sheets (MSDSs) and provide information and training to their employees regarding hazardous materials. The Environmental Professional will review the chemicals and MSDSs used at the project site for compliance with HCS.



- ▲ *Asbestos-Containing Material (ACM)* - Asbestos is a naturally occurring mineral fiber found in rocks. These fibers are fire resistant and have good bonding capabilities. These two properties made asbestos an ideal substance for building and machinery parts, and it has been incorporated into many products since the early 1900's. Many of these products are still functional and present in existing buildings. However, in the 1970's, asbestos use in the United States became restricted and was gradually phased out. It has been estimated that between 1900 and 1980, more than 30 million tons of asbestos were used in the United States. Some of the easily recognizable products that have been found to contain asbestos fibers include:
 - ▲ Hot water pipe covering, duct and boiler insulation
 - ▲ Sprayed-on wall and ceiling acoustical finishes
 - ▲ Acoustical ceiling tiles
 - ▲ Heat reflectors on wood stoves
 - ▲ Roofing shingles and felts
 - ▲ Siding on commercial and residential buildings
 - ▲ Window putty, spackling compounds, and vinyl adhesives
 - ▲ Floor tile

- ▲ *Urea Formaldehyde Foam Insulation (UFFI)* - UFFI is a thermal insulation material pumped into the spaces between the walls of a building, where it hardens to form a solid layer of insulation. The ability to inject this foam-based material has enabled UFFI to be used freely in hard-to-reach places, and it is estimated to have been installed in half a million buildings in the United States. As the foam matures, it gives off formaldehyde vapors which can cause discomfort to building occupants. It is also known that a small percentage of the population can have a strong reaction to very low



concentrations of formaldehyde. Therefore, it has been banned from further use.

- ▲ *Radon* - Today the EPA considers exposure to indoor radon gas to be a serious environmental health concern. Radon is a naturally occurring gas that is radioactive, colorless, and odorless. It moves through soil, rock, and water, around pipes, through floor traps, vents, and cracks in the concrete floors, then collects in the lower areas of a building.

Radon gas is produced when natural radioactive minerals break down and decay. These natural minerals are always present in the environment in slight amounts and are found in increased quantities in granitic or basaltic deposits. Radon gas further decays into smaller particles known as radon daughters or progeny, which attach to soil or dust particles in the air. As these particles are inhaled, the daughter products can be deposited on the lining of the lung and subsequently decay or emit radioactive particles. This radioactive decay damages lung tissue and causes cellular changes which can transform normal cells into cancer cells.

The EPA has established an action level of 4 pCi/L. for residential applications. That action level is an annual average for residential settings based on an exposure to that average level for 75% of the hours in a 70-year lifespan.

- 1.2.4 Review of Adjacent Properties - The Environmental Professional will survey adjacent properties for recognized environmental conditions that may have an impact on the subject site. The survey will include, but is not limited to a review of nearby



service stations, print shops, industrial facilities, listed federal and state hazardous waste sites, waste generators, and municipal waste sites.



INTRODUCTION

- 2.1 Purpose:** The purpose of this Phase I is to conduct an *environmental site assessment* of a parcel of commercial real estate with respect to the range of contaminants within the scope of Comprehensive Environmental Response, Compensation and Liability Act (CERCLA) and petroleum products; and to perform a visual, non-invasive review of the property and to identify recognized environmental conditions. The term *recognized environmental conditions* means the presence or likely presence of hazardous substances or petroleum products on a property under conditions that indicate an existing release, a past release, or a material threat of a release of hazardous substances or petroleum products into structures on the property or into the ground, groundwater, or surface water of the property. A *controlled recognized environmental condition* is a recognized environmental condition resulting from a past release of hazardous substances or petroleum products that has been addressed to the satisfaction of the applicable regulatory authority (for example, as evidenced by the issuance of a no further action letter or equivalent, or meeting risk-based criteria established by regulatory authority), with hazardous substances or petroleum products allowed to remain in place subject to the implementation of required controls (for example, property use restrictions, activity and use limitations, institutional controls, or engineering controls). A *historical recognized environmental condition* is a past release of any hazardous substances or petroleum products that has occurred in connection with the property and has been addressed to the satisfaction of the applicable regulatory authority or meeting unrestricted use criteria established by a regulatory authority, without subjecting the property to any required controls (for example, property use restrictions, activity and use limitations, institutional controls, or engineering controls). This Phase I assessment includes but is not limited to: determination of the presence of underground storage tanks (USTs), aboveground storage tanks (ASTs), polychlorinated biphenyl (PCB) equipment, urea formaldehyde insulation (UFFI), and hazardous wastes stored on-site, generated, or disposed of on the



property. This review also focuses on site conditions, and/or building construction that could impact the site. Also addressed are activities at adjoining properties and area businesses which could have potential to create recognized environmental conditions on the subject site.

The site review assesses past use of the property through a historical review of publicly available information. This review evaluates the likelihood that the site could contain recognized environmental conditions resulting from past operational activities. In addition, a regulatory review is conducted of operating permits, documentation of violations or judgement orders, and identification of past and/or present environmental conditions at the site.

- 2.2 Special Terms and Conditions:** There are no special terms or conditions associated with the scope of work for this investigation. The scope did not include any requirements for sampling of media for laboratory analyses or field screening to determine the possible presence of specific contaminants
- 2.3 Limitations and Exceptions of Assessment:** There were no observed limitations that required limitations or exceptions to be identified. All areas of the subject site were accessible and the weather conditions were favorable at the time of the site reconnaissance.
- 2.4 Limiting Conditions and Methodology Used:** TechCon has completed this Phase I in substantial compliance with the scope and limitations of ASTM Practice E 1527-13, as well as 40 CFR 312, and industry standards. However, it is acknowledged that hazardous materials and/or substances may be concealed in construction, masked by other materials or coverings, buried in the ground, submerged, or for some reason undetectable to the Environmental Professional, even through the exercise of due diligence. In addition, although this report may address structural aspects of the property/facility, the Environmental Professional specifically did not review designs, make calculations, perform tests, or in any



way assume responsibility for the actual structural condition of the property/facility. This completed Phase I also refers to information regarding soil, geology and groundwater. The information provided is obtained from sources thought to be reliable. However, the recitation of such information does not in any manner whatsoever infer that the Environmental Professional is performing any geologic investigation, analysis or interpretation that should be performed by a certified geologist or hydrogeologist.

- 2.5 Assumptions:** TechCon assumes that all information obtained from Client pertaining to the subject property is correct and complete. TechCon also assumes that Client has provided TechCon with all reasonably ascertainable prior environmental reports concerning the subject property. TechCon also assumes that this report will be used as a complete document and that no individual portions of the report will be evaluated without the totality of the information contained in the report being used for background and reference. Current observations, conditions, or regulatory positions may not represent conditions at some future time. This report represents TechCon's judgement and opinion based on information obtained.



Section 3.0

SITE DESCRIPTION

- 3.1 Location:** The subject site is located in Spokane, WA, on the west end of the Faith Bible Church campus, between Wall and Howard Streets. It is located on the north side of Cora Avenue, and does not currently have a designated street address. The site is located approximately 2.5 north of the Central Business District of Spokane, Washington. According to the City of Spokane, this property is in an area zoned RSF - Residential Single Family. "The RSF zone is a low-density single-family residential zone. It allows a minimum of four and a maximum of ten dwelling units per acre. One and two-story buildings characterize the allowed housing. The major type of new development will be attached and detached single-family residences. The RSF zone is applied to areas that are designated residential 4-10 on the land use plan map of the comprehensive plan." (City of Spokane Municipal Code)

An area map in *Appendix A* at the end of this report shows the subject site location.

Legal Description: An exact legal description was not provided to the Site Assessor. The generalized description provided identified the site as the west 300 feet of the Faith Bible Church campus (Tax Parcel 35064.3611). The site is located in the City and County of Spokane, in the State of Washington.

A Tax Parcel Map and an Area Map, showing the outline and location of the site are included in *Appendix A*.

- 3.2 Site and Vicinity Characteristics:** The subject site is located a few blocks south of an established area known as the Garland District, approximately 2.5 miles north of the central



business district of Spokane, Washington. The Garland District is a neighborhood shopping area that was established in the early 1900s. A survey of the adjacent properties shows the surrounding area is primarily populated with mature single and multifamily residential units. Commercial service/retail businesses and professional offices in the area are along the Post Street, Monroe Street, Garland Avenue and Division Street arterial frontages. Visual observation did not uncover indications the current properties or businesses in the vicinity have environmental problems that would impact the subject site.

- 3.3 Site Description:** The subject site is excess vacant land at the west end of the Faith Bible Church campus. It is the west 300 linear feet of that campus, with 300 feet of frontage along Cora Avenue and a shape that approximates a trapezoid. The site is primarily covered with indigenous weeds and grasses, over a base of dirt and gravel, with some crushed asphalt and concrete chunks (see photographs 4, 5 and 6). Improvements on the site include a chain link fence at the west (see photograph 3) and south (see photographs 1 and 2) boundaries, and remnants of a retaining wall constructed with railroad ties (see photographs 7 and 8) at the toe of the hill that is located on the north portion of the property. Other than the significant hillside along the north boundary, there are no prominent features on the site.

3.3.1 Water, Wastewater, and Sewer Service: City of Spokane municipal water and sewer services are available for connection to the site.

A Tax Parcel Map, an Area Map, and a 2014 aerial photograph showing the location and configuration of the subject site are provided in *Appendix A*. Photographs of the site and property conditions are shown in *Appendix B*.

- 3.4 Prior Knowledge:** The Assessor was given no information by the user of this report, the City of Spokane, Washington, concerning any environmental issues affecting the subject site. Due to the confidential nature of the pending real estate transaction, a Pre-Assessment



Questionnaire was not completed by the owner of the site for review by the Site Assessor.

3.5 Current Uses: The subject site is vacant land.

3.6 Past Uses: According to historical aerial photographs and other documents, the subject site was vacant land prior to being part of a much larger area that was mined as a sand and gravel pit in the early 1900s. The pit was operated into the 1960s, then when operations ceased, the pit was abandoned for several years. In the early 1970s, the larger pit site was backfilled, leveled and developed into an RV park (*Expo Village*) to support the World's Fair which was held in Spokane in 1974. In approximately 1978, the larger area was converted to a mobile home park (*Garland Hills Mobile Park*). The park operated until approximately the mid-1990s. The mobile home park was cleared from the area and *Faith Bible Church* was constructed near the center of the site.

3.7 Current and Past Uses of Adjoining Properties: The adjoining properties are described below:

3.7.1 West Adjoining Property - The west boundary of the subject (see photograph 3) is adjacent to an apartment complex that was constructed in approximately 1979. The west boundary of the apartment site is paralleled by Post Street, an asphalt-paved City of Spokane roadway. South of the intersection of Post Street and Cora Avenue is an area of mature single family residences. North of the intersection is an apartment complex. A current visual survey of these areas did not reveal conditions of environmental concern to the subject site.

3.7.2 North Adjoining Property - The north portion of the subject site is a steep hillside (see photographs 4 and 5) that extends to the north boundary at the top of the hill,



where it is adjacent to single-family residences that front on Glass Avenue, an asphalt-paved City of Spokane neighborhood street. Further north is an area of mature residential development, and the Garland Business District. A current visual survey of this area did not reveal conditions of environmental concern to the subject site.

3.7.3 East Adjoining Property - The east boundary of the subject site (see photograph 7) is adjacent to vacant land that is also part of the Faith Bible Church Campus, and is similar in characteristics to the subject site. Beyond the vacant area is the developed portion of the church campus. These areas did not reveal conditions of current environmental concern to the subject site.

3.7.4 South Adjoining Property - The south boundary of the subject site is paralleled by asphalt-paved Cora Avenue, a City of Spokane neighborhood street (see photographs 1 and 2). Across Cora Avenue to the south is an area of mature residential development. A visual survey of these areas did not reveal conditions of immediate environmental concern to the subject site.



Section 4.0

RECORDS REVIEW

4.1 Regulatory Agency Review: TechCon reviewed federal and state environmental data bases. The data collected are those sites which are registered with governmental agencies and which fall within the ASTM radius search guideline of the project site. Table 4.1 summarizes the information found. A copy of the Regulatory Map, which shows the locations with reference to the property, is included in *Appendix A*.

TABLE 4.1. STATISTICAL SITE INFORMATION

Database	Radius(Mi)	Property	Property-1/4	1/4-1/2	1/2-1	Total
NPL	1	No	0	0	0	0
CERCLIS	.5	No	0	0	0	0
CERCLIS NFRAP	.5	No	0	0	0	0
MTCA	1	No	0	0	0	0
UECA	Property	No	0	0	1	1
ERNS	Property	No	0			0
LUST	.5	No	0	0	1	1
UST	P/A	No	0			0
MWF	.5	No	0	0	0	0
RCRA	P/A	No	0	1	0	1
RCRA Non-CORRACTS TSD	.5	No	0	0	0	0
RCRA CORRACTS	1	No	0	0	0	0
BROWNFIELDS	1	No	0	0	0	0
TOTAL			0	1	2	3
▲ NPL (National Priorities List)			▲ MWF (Municipal Waste Facility)			
▲ CERCLIS (Comprehensive Environmental Response, Compensation and Liability Information System)			▲ RCRA (Resource Conservation and Recovery Act)			
			▲ P/A (Property and Adjoining Property)			
▲ ERNS (Emergency Response Notification System)			▲ LUST (Leaking Underground Storage Tank)			
▲ UST (Underground Storage Tank)			▲ CORRACT-(RCRA sites subject to corrective action)			
▲ MTCA (Model Toxics Control Act Site)			▲ NFRAP (No Further Remedial Action Planned)			
▲ UECA - (Uniformed Environmental Covenant Act)						



Within the ASTM search parameters, the following sites were found during the database search:

4.1.1 MTCA Sites - 0. *Definition:* MTCA is an acronym for Model Toxics Control Act. Sites on the MTCA list are undergoing, have undergone, or are scheduled for investigation by the Washington State Department of Ecology for possible hazardous substance contamination. Once remedial action has been completed, the Toxic's Cleanup Program's management determines the removal of the site from the MTCA list. The Hazardous Sites List is a subset of the Confirmed and Contaminated Sites List. It contains those contaminated sites that have been ranked using the Washington Ranking Method.

Findings: Within a one mile radius of the property, no MTCA sites are registered with the State of Washington Department of Ecology (Ecology), and published on a list reviewed February 12, 2014.

No Further Action Sites: The following sites in the immediate vicinity of the subject site were formerly on the MTCA list, but have received "No Further Action" determinations from the Department of Ecology. These sites are not noted on the map in *Appendix A*, and are mentioned here only as a matter of record. Department of Ecology information concerning these sites is included in *Appendix A*.

- ▲ *Wendle Ford* - 4727 N. Division Street, Spokane, WA - Ecology reports remediated petroleum-contaminated soil. A Remedial Action under the Voluntary Cleanup Program (VCP) was completed and a No Further Action determination was issued by the Department of Ecology on March 4, 2009. *Wendle Ford* is no longer located at this location.



- ▲ *WA DOT Eastern Region Mayfair* - 2714 N. Mayfair Street, Spokane, WA - Ecology reports remediated soil and groundwater contamination with halogenated organics and non-halogenated solvents. A Remedial Action was completed and a No Further Action determination was issued by the Department of Ecology on September 25, 1993.
- ▲ *Drapery Mart* - 225 W. Indiana Avenue, Spokane, WA - Ecology reports remediated soil contaminated with polynuclear aromatic hydrocarbons. A Remedial Action under the Voluntary Cleanup Program (VCP) was completed and a No Further Action determination was issued by the Department of Ecology on January 26, 2011.

4.1.2 Uniform Environmental Covenant Act Registry (UECA) - 1. *Definition:* The Uniform Environmental Covenants Act (UECA) Registry is a list of sites that have residual contamination remaining on them after the cleanup has been completed. These sites have environmental covenants or deed restrictions limiting certain uses of the property.

Findings: The following site in the vicinity of the subject site is listed on the Uniform Environmental Covenants Act (UECA) Registry as having restrictive covenants or institutional controls in place.

- ▲ *Drapery Mart* - 225 W. Indiana Avenue, Spokane, WA - This site was removed from the Hazardous Sites List and given a “No Further Action” determination on January 26, 2011, with Institutional Controls and Restrictive Covenants in place. According to Department of Ecology UECA Registry, property use restrictions and a requirement for an impermeable surface are included as a part of the No Further Action agreement.



Department of Ecology information concerning this site is included in *Appendix A*.

4.1.3 LUST Sites - 1. Definition: LUST is an acronym for leaking underground storage tank. A list of LUST sites is maintained by the Washington State Department of Ecology.

Findings: Agency records reviewed February 12, 2014, showed the following reported leaking underground storage tank site within the vicinity of the subject property:

- ▲ *Dee's Auto Service* - 206 West Indiana Avenue, Spokane, WA. The affected medium is petroleum-contaminated soil. According to the Department of Ecology, Remedial Action is in process on this site. Please note that this site is outside the one-half mile reporting radius and is mentioned here only as a matter of record.

No Further Action Sites: The following sites in the immediate vicinity of the subject site were formerly on the LUST list, but have received "No Further Action" determinations from the Department of Ecology. These sites are not noted on the map in *Appendix A*, and are mentioned here only as a matter of record. Department of Ecology information concerning these sites is included in *Appendix A*.

- ▲ *Northtown Chevron* - 4615 North Division Street, Spokane, WA. The affected medium is soil. A final independent cleanup action report concerning this site was received by the Department of Ecology and a No Further Action determination was issued on January 30, 2012.
- ▲ *Ray Brown's Tire Center* - 4218 N. Division Street, Spokane, WA. The affected medium is soil. A final independent cleanup action report



concerning this site was received by the Department of Ecology and a No Further Action determination was issued on March 11, 2013.

- ▲ *SFD Station 10 (Fire Department)* - 3608 North Division Street, Spokane, WA. The affected medium is soil. A final independent cleanup action report concerning this site was received by the Department of Ecology and a No Further Action determination was issued on February 1, 2012.
- ▲ *New Concepts Auto Service (Goodyear Auto Service)* - 4423 N. Division Street, Spokane, WA - Ecology reports remediated soil contaminated with petroleum products. A Remedial Action under the Voluntary Cleanup Program (VCP) was completed and a No Further Action determination was issued by the Department of Ecology on March 26, 1998.
- ▲ *Sure Save Grocery* - 3039 N. Monroe Street, Spokane, WA - Ecology reports remediated soil contaminated with petroleum products. A Remedial Action under the Voluntary Cleanup Program (VCP) was completed and a No Further Action determination was issued by the Department of Ecology on October 27, 2009.
- ▲ *Jr.'s Town Pump* - 2725 North Division Street, Spokane, WA. The affected medium is soil. A final independent cleanup action report concerning this site was received and a No Further Action designation was issued by the Department of Ecology on February 1, 2012.
- ▲ *National Music Service Corp.* - 122 East Montgomery Avenue, Spokane, WA. The affected medium is soil. A final independent cleanup action report concerning this site has been received and a No Further Action designation was issued by the Department of Ecology on March 22, 2013.



- ▲ *Educational Service District 101* - 1025 West Indiana Avenue, Spokane, WA. The affected medium is soil. A final independent cleanup action report concerning this site was received and a No Further Action designation was issued by the Department of Ecology on August 30, 2011.

- ▲ *Monroe Quik Stop (Gull Quik Stop 1640)* - 2202 N. Monroe Street, Spokane, WA. The affected medium is soil. A final independent cleanup action report concerning this site was received and a No Further Action designation was issued by the Department of Ecology on October 31, 2007.

- ▲ *North Central Care Center* - 618 W. Nora Avenue, Spokane, WA. The affected medium is soil. A final independent cleanup action report concerning this site was received and a No Further Action designation was issued by the Department of Ecology on August 30, 2011.

- ▲ *Southland Facility 18395 (7 Eleven 18395)* - 323 W. Indiana Avenue, Spokane, WA - Ecology reports remediated soil contamination with petroleum products. A Remedial Action under the Voluntary Cleanup Program (VCP) was completed and a No Further Action determination was issued by the Department of Ecology on April 19, 1999.

Department of Ecology information concerning these sites is included in *Appendix A*.

Note: There are no active or closed LUST sites on **Indian Lands** in Spokane, Washington. Data concerning these sites in Washington is included in *Appendix A*.

4.1.4 CERCLIS Sites - 0. *Definition:* CERCLIS is an acronym for Comprehensive Environmental Response, Compensation, and Liability Information System. Sites



in the CERCLIS area are expected to be investigated by the Federal EPA for hazardous substance contamination and for possible inclusion on the NPL.

Findings: Federal databases reviewed February 12, 2014, revealed no CERCLIS sites within one-half mile of the subject site.

- 4.1.5** CERCLIS NPL Sites - 0. *Definition:* NPL is an acronym for National Priorities List. It is compiled by the EPA and includes the highest priority sites undergoing or scheduled for cleanup under the federal Superfund program.

Findings: According to federal records reviewed February 12, 2014, there are no NPL sites in the vicinity of the subject property

- 4.1.6** CERCLIS NFRAP Sites - 0. *Definition:* NFRAP is an acronym for No Further Remedial Action Planned. NFRAP sites may be sites where, following an initial investigation, no contamination was found, contamination was removed quickly without the need for the site to be placed on the National Priorities List, or the contamination was not serious enough to require Federal Superfund action. The Archive (NFRAP) designation indicates the site has no further interest under the Federal Superfund Program based on available information. EPA may perform a minimal level of assessment work at a site while it is archived if site conditions change and/or new information becomes available. The Archive designation is removed and the site is returned to the CERCLIS inventory if more substantiative assessment and/or any cleanup work is necessary under the Federal Superfund program.

Findings: According to federal records reviewed February 12, 2014, no NFRAP (No Further Remedial Action Planned) sites are within one-half mile of the subject site.



4.1.7 RCRA Sites - *Definition:* RCRA is an acronym for Resource Conservation and Recovery Act. The RCRA list tracks the status of registrations, permits, reports, inspections, enforcement activities, and financial data of those sites which use, store, generate or transport hazardous materials.

4.1.7.1 CORRACT Sites - 0. *Definition:* CORRACT sites are those RCRA sites that have required corrective action.

Findings: EPA records reviewed February 12, 2014, showed no RCRA CORRACT sites within one mile of the subject property.

4.1.7.2 RCRA TSD Sites - 0. *Definition:* RCRA TSD is an acronym for those RCRA sites which treat, store or dispose hazardous waste as defined in the Resource Conservation and Recovery Act. Such facilities are listed with the EPA.

Findings: EPA records reviewed February 12, 2014, showed no RCRA TSD sites within one-half mile of the subject property.

4.1.7.3 RCRA Generators - 1. *Definition:* RCRA generators are those sites which generate hazardous waste as defined in the Resource Conservation and Recovery Act. Such sites are listed with the EPA.

Findings: Neither the subject site nor any contiguous sites are currently on the RCRA generator list. The following site in the general vicinity of the subject site is currently on the RCRA generator list reviewed February 12, 2014:



- ▲ *Custom Body Co.* - 3104 North Monroe Street, Spokane, WA - This site is listed by the EPA as a “conditionally exempt small quantity generator” of hazardous waste.

“A generator is a conditionally exempt small quantity generator in a calendar month if he generates no more than 100 kilograms of hazardous waste in that month. A conditionally exempt small quantity generator may either treat or dispose of his acute hazardous waste in an on-site facility or ensure delivery to an off-site treatment, storage or disposal facility.” (US Environmental Protection Agency)

EPA information concerning RCRA sites in the Spokane area is included in *Appendix A*.

- 4.1.8 MWF - 0. *Definition:* MWF is an acronym for municipal waste facility. The Washington State Department of Ecology maintains a list of solid waste landfills in the state.

Findings: Database review showed no municipal waste facilities within the vicinity of the subject site.

- 4.1.9 ERNS Sites - 0. *Definition:* ERNS is an acronym for Emergency Response Notification System. The ERNS list provides the locations of hazardous spills reported to the federal emergency response system.

Findings: No sites on the subject property were on the ERNS list.



4.1.10 UST Sites - 0. *Definition:* UST Sites are those sites registered with the State of Washington as currently or formerly having underground storage tanks on-site.

Findings: Neither the subject property, nor any immediately adjacent property is currently listed in the State of Washington UST database reviewed February 12, 2014.

4.1.11 Brownfields Sites - 0. *Definition:* Brownfields are properties that are abandoned or underused because of environmental contamination, or perceived contamination from past industrial or commercial practices. Often the potential liability associated with contamination complicates business development, property transactions or expansion on the property. Cleanup and redevelopment can turn a perceived problem into a community asset. A restored brownfield can stimulate a community's economy, save green space from development, and provide an opportunity for habitat restoration or park creation. A city or town can restore properties to active use.

Findings: According to Department of Ecology and US EPA records reviewed February 12, 2014, no sites within one mile of the subject property are currently listed in the Department of Ecology Brownfields inventory.

4.2 Region Physiographic Conditions: The surface features of the Spokane area are the result of several geological events which include basalt flows, glaciation and regional flooding.

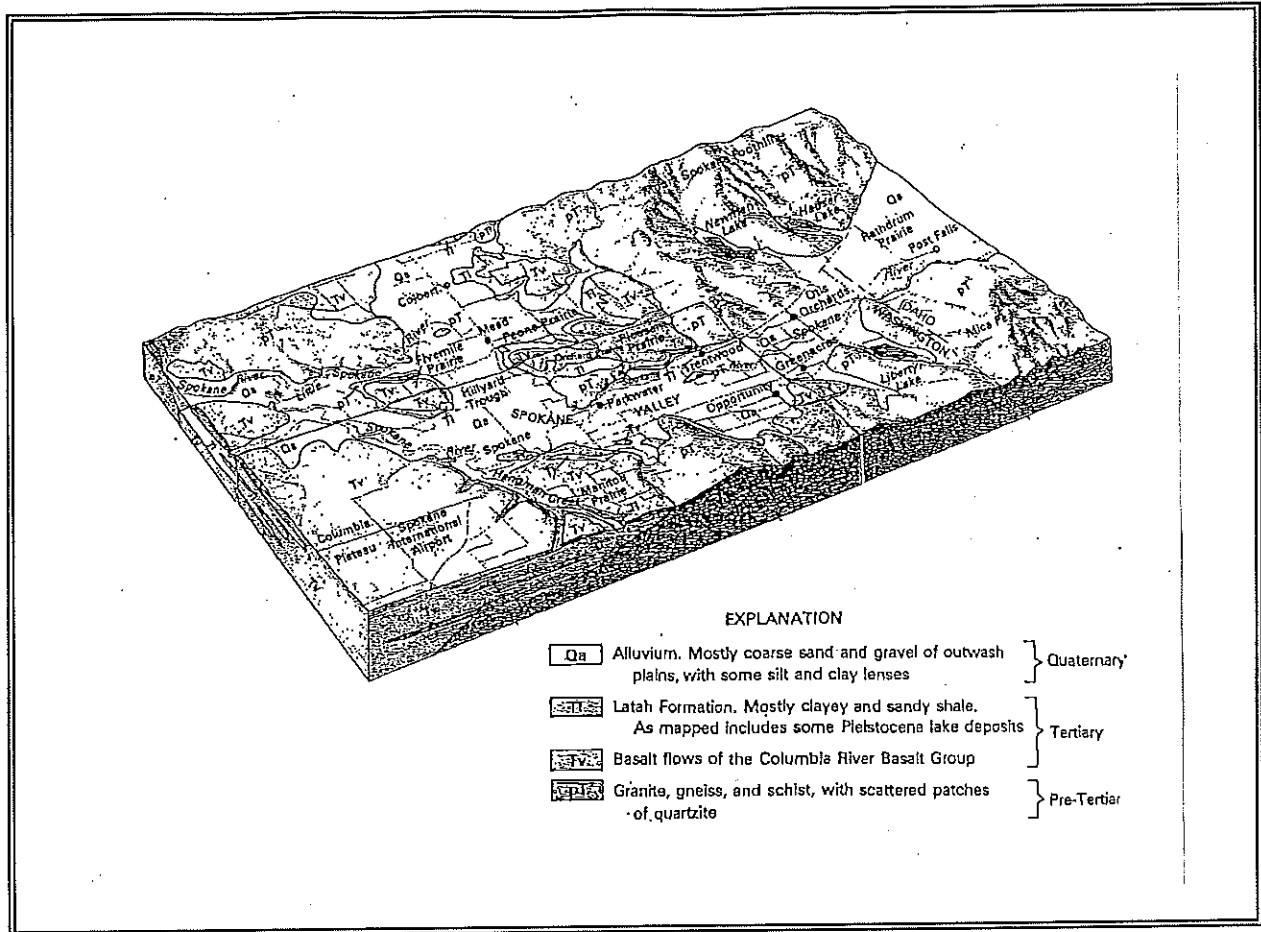
4.2.1 Basalt Flows - Bedrock in this area consists of late Miocene age (from 5 to 24 million years ago) basalt flows of the Columbia River Group. The Spokane area is near the eastern fringe of these flows. In general, the local basalt is several hundred feet thick and interbedded with light-colored sandy, clayey sediments of the Latach formation. Basalt outcrops can be seen in numerous locations in the Spokane area.



Following the deposit of the basalt, the ancestral Spokane River cut its course in what is essentially its present valley between the Idaho border and the City of Spokane. The deep valley thus formed was the trough into which were subsequently deposited glacial outwash sand and gravel, then the coarser sand and gravel of the Spokane Floods that today form the Spokane aquifer.

4.2.2 Glaciation - Between 10,000 and 2 million years ago during the Pleistocene Epoch (Ice Age), the Earth's climate underwent periods of alternate cooling and warming. This resulted in at least four to six major glaciations which affected this area. The Spokane area was covered partially by ice lobes. Melt-water streams draining these lobes carried large quantities of sand, gravel, silt, and clay and deposited these in and along the Spokane Valley. Eventually, the last ice lobe retreated into the valley of the north-flowing Clark Fork River, northeast of the Spokane Valley and formed a massive ice dam across the valley. As melt waters from other ice lobes far up the Clark Fork River drainage became ponded behind the ice dam, Glacial Lake Missoula was formed.

4.2.3 Flooding - Eventually the ice dam was breached and the dam gave way completely. The resulting rapid draining of 500-cubic-mile Glacial Lake Missoula resulted in a maximum discharge across the Columbia Plateau of 750 million cubic feet per second (cf/s) -- 20 times the combined flow of all the rivers of the world today. When the flood waters passed through the Rathdrum Prairie-Spokane Valley area, the flood waters carried large volumes of rock debris and sediment of all sizes from clay particles to large cobbles and boulders. These flood deposits form the present highly permeable aquifer beneath the Spokane Valley.



4.2.4 Topographical Conditions: The US Geological Survey (USGS) Topographic Map, Spokane NW, WA Quadrangle shows the elevation on the property as approximately 1940 feet above sea level. The site is mostly flat with a major rise in elevation at the north boundary, where a hillside rises to an elevation of approximately 2000 feet above sea level (see photographs 4 and 5). At the boundaries, it is basically at the same elevation as adjacent sites. The generalized surface gradient in the area of the subject site is down toward the south.

4.2.5 Soil Conditions: Soils are classified by the U.S. Department of Agriculture (USDA) and the American Society for Testing and Materials (ASTM).



The subject site is in an area where the USDA classifies the soil as Spens very gravelly loamy coarse sand, 30 to 65 percent slopes. To the south and east, the soils transition to Urban land - Opportunity, disturbed complex, 3 to 8 percent slopes. Observation of visible soils in the area tends to verify this classification. A copy of the 2014 USDA Natural Resources and Conservation Service Web Soil Survey is included in *Appendix A*.

4.2.6 Groundwater Conditions: The depth to groundwater at the property is estimated to be greater than 200 feet. Generally, in this area groundwater could be expected to flow northwest. The nature of fractured basalt rock found in the subsurface can cause wide variation in groundwater depth and direction in the vicinity of the subject site. The subject site lies within the boundaries of the Spokane Valley/Rathdrum Prairie Aquifer, which stretches from northern Idaho to Spokane and is a prominent physiographic feature of the State of Washington.

4.2.7 Flood Plain Conditions: Based on publicly available information, the property is not shown to be in a flood plain area.

4.3 Historical Review: The following local agency files or historical records were reviewed in the preparation of this report:

4.3.1 Original Construction/Development - Metsker Maps, Sanborn Maps, historical atlases, aerial photos, Polk Directories, Title Company files, Fire Department records, and Spokane City and County records were among those documents reviewed to obtain historical information about the property.

- ▲ *Polk City Directories and historic phone records* - City Directories checked at five year intervals, beginning with the first available in 1929, show the area surrounding the site was residential in use. There were no entries for the



subject site until 1980, when *Expo Village Mobile Home Park* appears at an address of 600 W. Cora Avenue. In approximately 1985, the use is identified as *Garland Hills Mobile Home Park*. In 1992, there was no entry. In 2000, the use was identified as *Faith Bible Church*. Subsequent entries showed that use continuing. There were no uses discovered that identified a recognized environmental condition at the subject site.

- ▲ *Sanborn Maps* - Available 1910 and 1950 Sanborn Maps show the hillside in place on the north area of the subject site. The 1910 map shows the site as vacant ground. The 1950 map shows a very large sand and gravel extraction pit operation in place all along the base of the hillside. A copy of the 1950 Sanborn Map is included in *Appendix A*.
- ▲ *Fire Department Records* - Records concerning underground storage tanks and environmental responses to the subject site were requested from the Spokane Fire Department. The Fire Department did not find any evidence in the records indicating underground storage tanks or environmental responses at the site.
- ▲ *Metsker Maps* - The historical maps show the property in an area known as the Resurvey of Whittings Second Addition and they do not indicate specific development on the site. Locations of railroad lines, major roadways, pipelines and the Spokane River were identified with relationship to the subject site. However, nothing identified on these maps indicated an environmental concern for the subject site.
- ▲ *Aerial Photographs* - 1935, 1950, 1962, 1974, 1986, 1992, and 2014 aerial photographs that included the subject site were available for review. All reviewed photographs show development consistent with other historical



records. The 1935, 1950 and 1962 photographs show the site as part of the large sand and gravel pit mining operation. The 1974 photograph shows the RV Park in place. The 1986 photograph shows the mobile home park, and the west adjacent apartment complex in place. The 1992 photograph shows the outline of the mobile home park, but the park has been dismantled. The 2014 photograph shows the subject site in the current configuration. Copies of the 1935, 1950, 1974, 1986 and 2014 photographs are included in *Appendix A*.

- ▲ *Spokane City Records* - Building Department records, beginning in 1973, when the original infrastructure was constructed, were available for review. The permit record verified that the site has been connected to the public water and sewer systems since then. Available permits were all for the Expo Village RV Park and the Garland Hills Mobile Home Park. No recognized environmental conditions were identified in the available permits.
- ▲ *Spokane County Assessor's Records* - Field book records at the County Assessor's offices contained field sketches of the church building to the east and the site configuration identified the subject site as vacant land. No recognized environmental conditions were identified in the review of County Assessor records.
- ▲ *Title Company* - A property file review was conducted back to 1940, at the offices of First American Title Insurance Company. The review identified private ownership of the subject site since 1940. The current owners of the site, Faith Bible Church, purchased the old mobile home site from Great Western Savings Bank. There were no environmental liens or restrictions, leases or ownerships of record discovered that indicated an environmental concern for the subject site.



- 4.5 Previous Environmental Investigations:** There were no public records found regarding previous environmental investigations of the subject site. It is known that during the years when the previous sand and gravel pit was abandoned, there was incidental dumping of yard debris and household junk in the pit. Most of the known dumping occurred in the area to the east of the subject site. Nothing of significance was discovered when Faith Bible Church completed geotechnical studies of the site.



Section 5.0

INVESTIGATION RESULTS

5.0 Site Observations: Site reconnaissance was performed to determine if *recognized environmental conditions* were present at the property or adjoining properties. At the time of site reconnaissance on January 28, 2015, the existing site conditions were favorable. The sky was overcast, the ambient air temperature was approximately 30 degrees F., and the wind was light and variable. The findings are discussed below.

5.1 Hazardous Substances: During the site reconnaissance, no hazardous substances were observed.

5.2 Hazardous Substance Containers and Unidentified Substance Containers: There was no visible evidence observed that suggested unidentified containers or hazardous substance containers have been improperly used or stored on the subject site. No containers were observed.

5.3 Storage Tanks:

5.3.1 Underground Storage Tanks (USTs) - Nothing was observed indicating present or past use of USTs at the subject site.

5.3.2 Above-Ground Storage Systems (ASTs) - Nothing was observed that indicated present or past use of ASTs at the subject site. It is possible that the previous mobile homes on the site may have utilized small heating oil ASTs. However that use is not a significant issue. No ASTs were observed.



- 5.4 Polychlorinated Biphenyl (PCB) Equipment:** There was no visual evidence of PCB equipment on the property. The transformers observed in the area of the site appeared to be in good condition without any indications of heat stress, and they appeared to be labeled NON PCB.
- 5.5 Solid Waste Disposal:** Regularly scheduled refuse pickups by the City of Spokane dispose of non-hazardous waste in the vicinity of the subject site. There was no discovered evidence that solid wastes have ever been improperly buried on the subject site. Minor amounts of crushed asphalt and concrete residuals from the previous use as a mobile home park were observed in some locations. It is known that incidental disposal of yard waste and household junk from nearby residences took place during the time the site was part of the abandoned sand and gravel pit. However, there were no discoveries of problematic items at the Faith Bible Church building site to the east when it was developed. That area was reported to have been the most heavily affected.
- 5.6 Physical Setting Analysis:** No physical setting issues were identified. All potentially problematic commercial uses in the vicinity are either sufficiently separated for both surface and groundwater migration considerations or current practices do not pose probable issues.
- 5.7 Sensitive Receptors:** No evidence was observed of the following sensitive receptors:
- Major underground conduits, etc.
 - Monitoring or water wells
 - Pits, lagoons, ponds
- One stormwater catch basin was observed in the southwest area of the site. There was no observed evidence that indicated this basin has ever had contaminated



material introduced to the chamber. There was no observed staining and no detectable odor.

5.8 Drums: There was no visible evidence of present or past improper use of drums on the subject site. No drums were observed.

5.9 Surface Soil Conditions: During reconnaissance, no indications of the following conditions were observed on the surfaces of the subject site:

- ▲ Pits, ponds, or lagoons
- ▲ Unidentified substance containers
- ▲ Waste water with identified uses

There were small amounts of yard waste and benign trash observed in the northwest area of the site (see photograph 8). Nothing observed in this debris was of significance.

5.10 Pesticides and Herbicides: There was no evidence of pesticide or herbicide usage (stressed vegetation, odors) encountered during the site reconnaissance.

5.11 Lead-Based Paint: Since there are no structures on the site, lead-based paint should not be present. Testing for lead content in paint was outside of the scope of work for this assessment.

5.12 Asbestos-Containing Material (ACM): Since there are no structures on the site, ACM should not be present. Testing for asbestos content in building materials was outside the scope of work for this assessment.



- 5.13 Urea Formaldehyde Foam Insulation (UFFI):** No visible or historical evidence was found that UFFI was used on the property.
- 5.14 Radon:** Spokane County is reported by the State of Washington to pose a moderate-to-high risk for radon impact. Since there are no structures on the site to promote accumulation, radon is not considered a problem for the site in the current configuration. Testing for radon gas was outside the scope of work for this assessment.
- 5.15 Odors:** Strong, pungent or noxious odors were not encountered during the site reconnaissance.



Section 6.0

FINDINGS AND CONCLUSIONS

- 6.1 Findings and Conclusions:** TechCon has performed a Phase I Environmental Site Assessment in substantial conformance with the scope and limitations of ASTM Practice E 1527-13 and 40 CFR Part 312 of the property as described in the legal description of Section 3.0 of this document. Any exceptions to, or deletions from this practice are described in Section 2.3 of this report. **This assessment did not discover any *current, controlled or historical recognized environmental conditions* on the subject site. We noted no *suspect or de minimis recognized environmental conditions*. The risk of contamination is so minimal that no further investigation is recommended.**

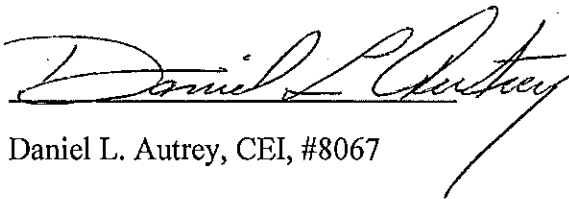


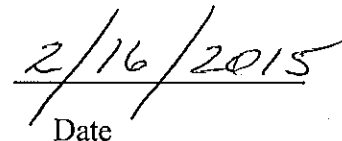
Section 7.0

CERTIFICATIONS

- 7.0 Certification Statement:** I certify that to the best of my knowledge and belief the facts and data used in this survey are true and accurate, based on currently accepted and available information as of the survey date; that I personally surveyed the subject property; and I have no undisclosed interest, present or future in this property.

I declare that, to the best of my professional knowledge and belief, I meet the definition of *Environmental Professional* as defined in §312.10 of 40 CFR 312; and I have the specific qualifications based on education, training, and experience to assess a property of the nature, history, and setting of the subject property. I have developed and performed the "all appropriate inquiries" in conformance with the standards and practices set forth in 40 CFR Part 312.

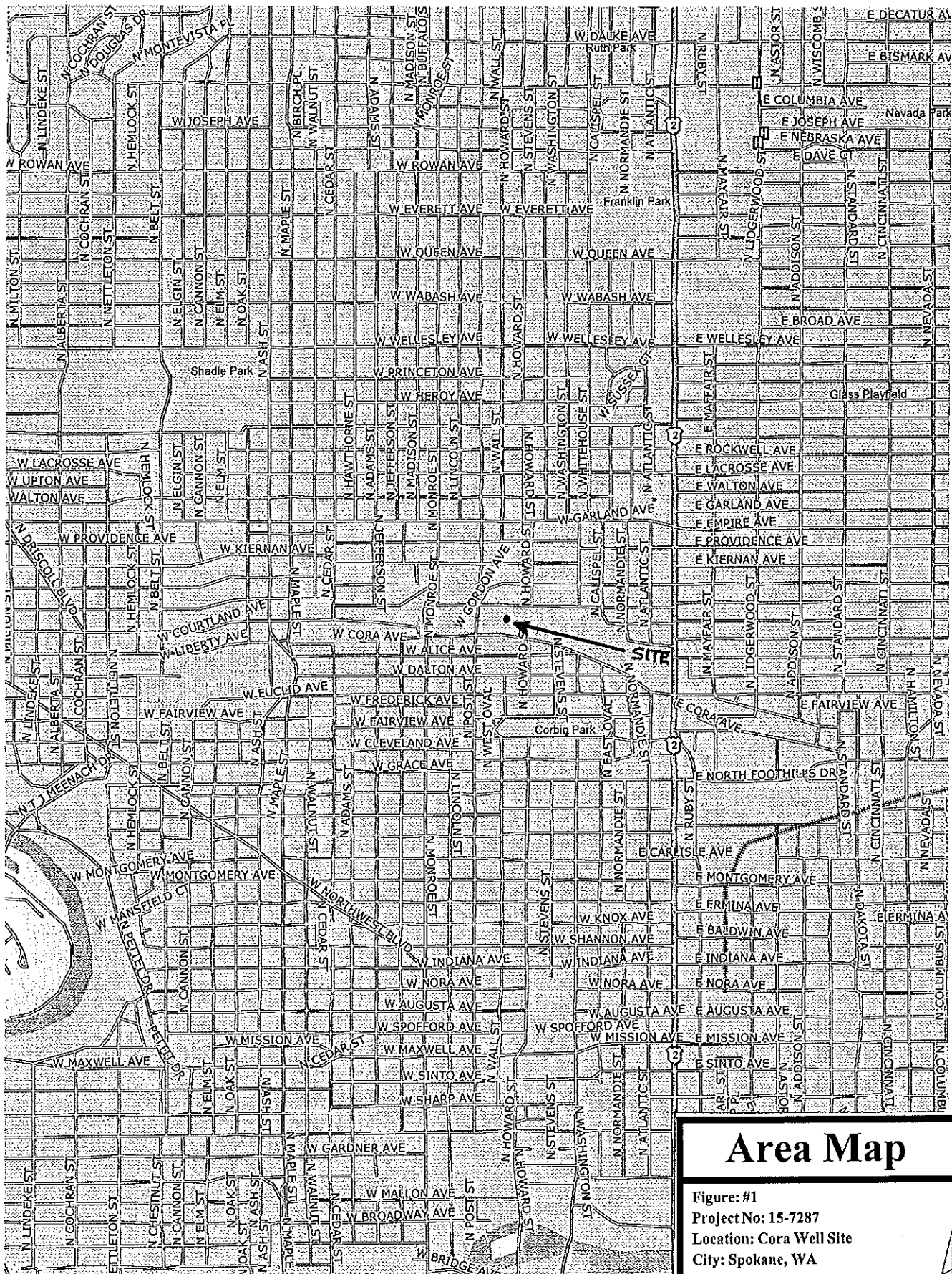

Daniel L. Autrey, CEI, #8067


Date



APPENDIX A

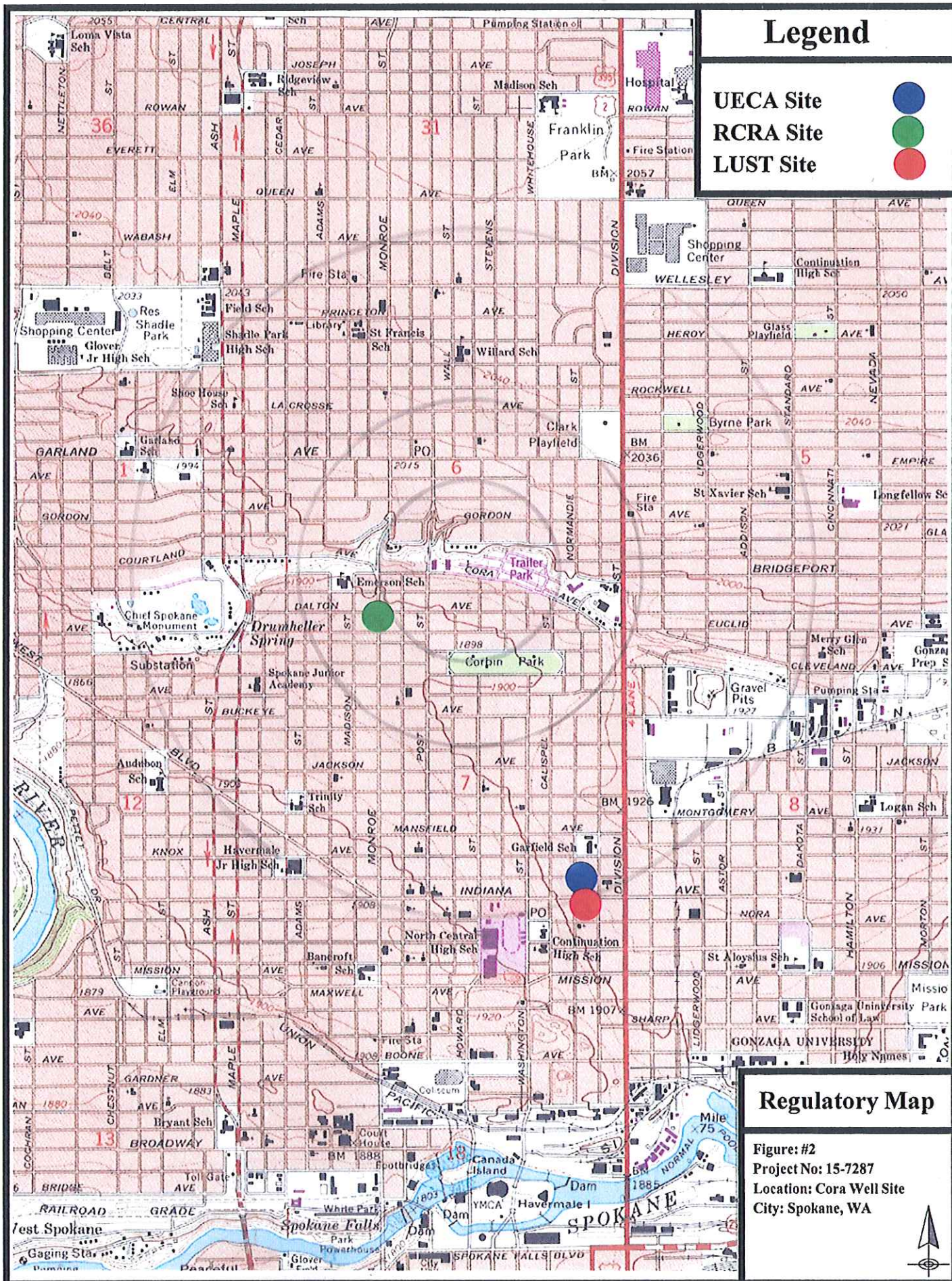
MAPS AND DOCUMENTS

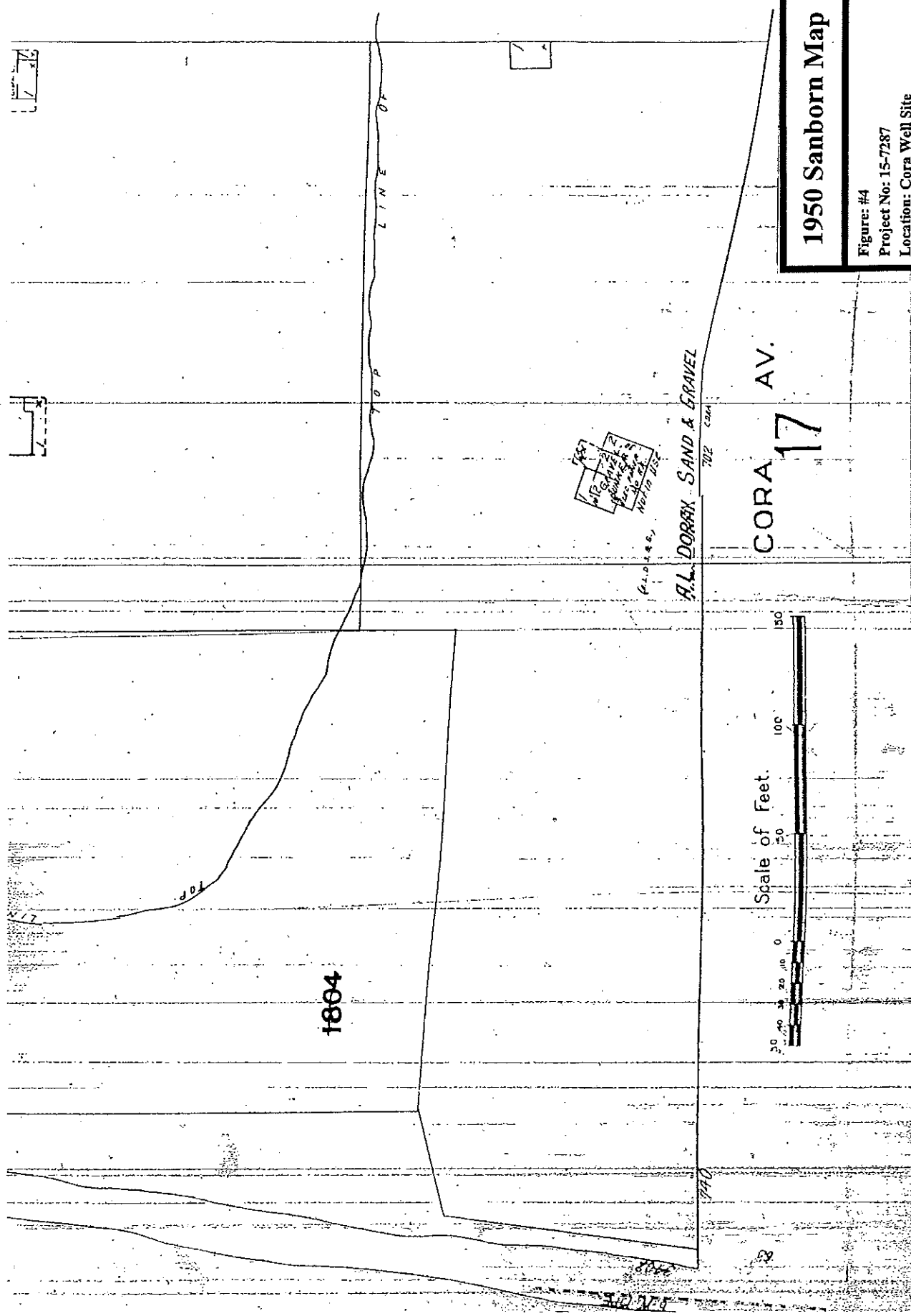


Area Map

Figure: #1
 Project No: 15-7287
 Location: Cora Well Site
 City: Spokane, WA



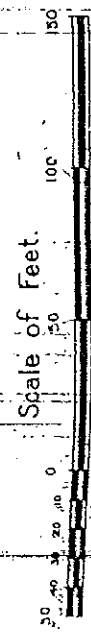




1950 Sanborn Map

Figure: #4
Project No: 15-7287
Location: Cora Well Site
City: Spokane, WA

CORA 17 AV.



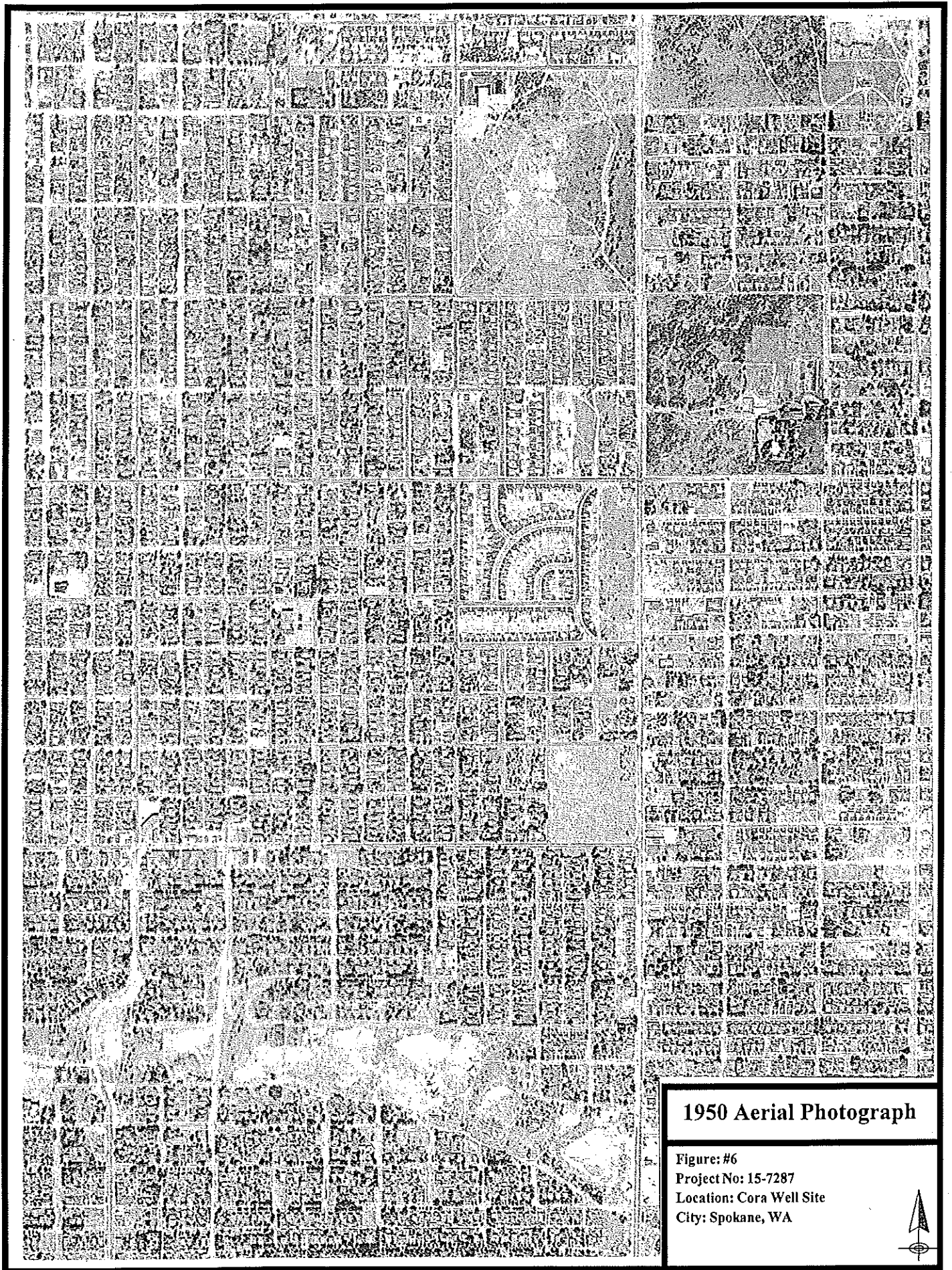
Scale of Feet.



1935 Aerial Photograph

Figure 10
Project No. 15-757
Landon, Glen Wall, Inc.
City, Spokane, WA





1950 Aerial Photograph

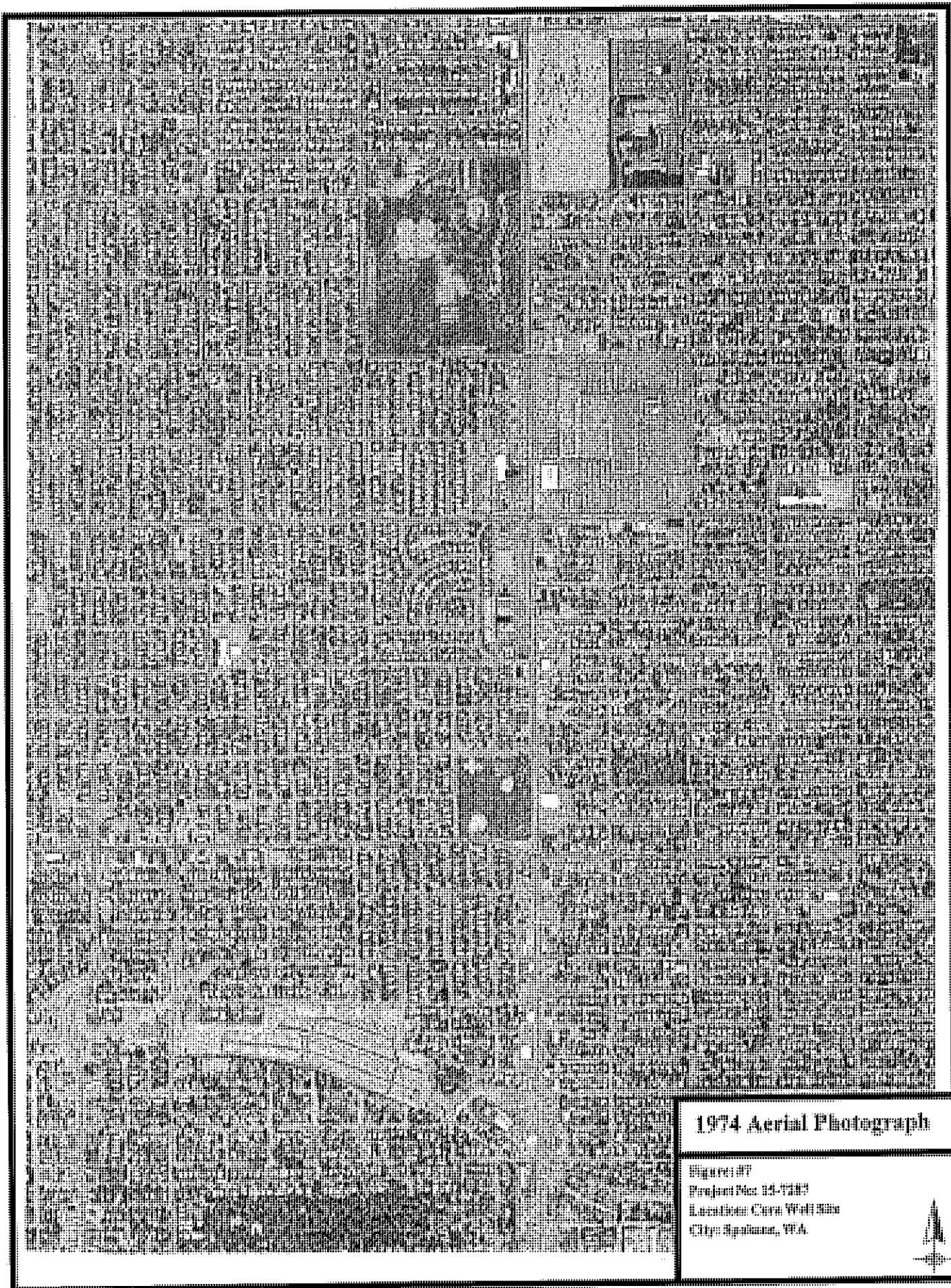
Figure: #6

Project No: 15-7287

Location: Cora Well Site

City: Spokane, WA

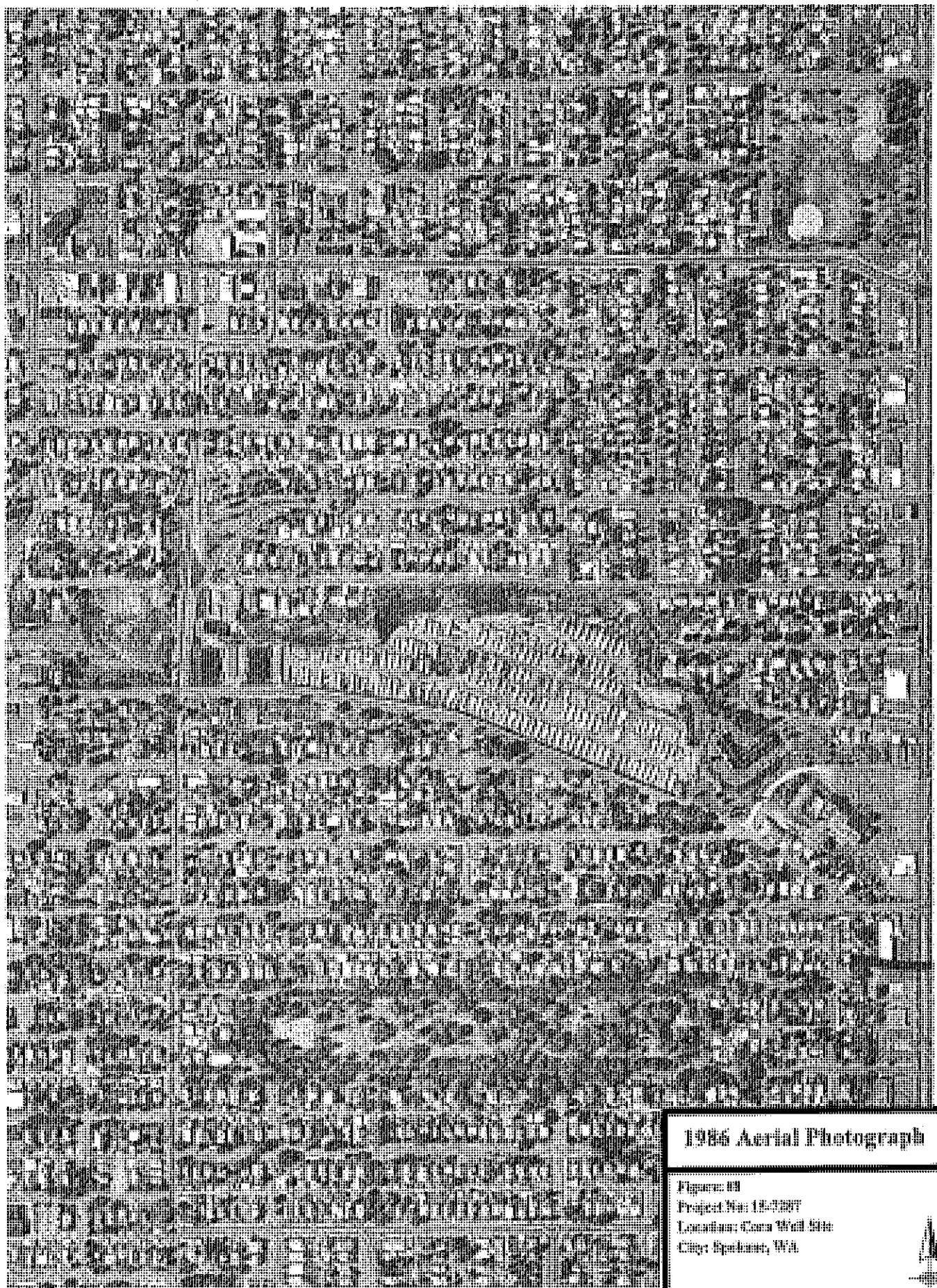




1974 Aerial Photograph

Figure #7
Project No. 14-7103
Location Core Well Site
City of Spokane, WA





1986 Aerial Photograph

Figure 11
Project No. 11-0007
Location: Cane Well Site
City: Spokane, WA





2014 Aerial Photograph

Figure 10
Project No. 15-2007
Tomball Area WPD Site
City: Houston, TX



Soil Map—Spokane County, Washington



Map Scale: 1:1,390 if printed on A landscape (11" x 8.5") sheet.

Map projection: Web Mercator Corner coordinates: WGS84 Edge tics: UTM Zone 11N WGS84

0 50 100 200 300 Feet

0 20 40 80 120 Meters

MAP LEGEND

Area of Interest (AOI)	Soil Area
Area of Interest (AOI)	Stony Spot
Soils	Very Stony Spot
Soil Map Unit Polygons	Wet Spot
Soil Map Unit Lines	Other
Soil Map Unit Points	Special Line Features
Special Point Features	Water Features
Blowout	Streams and Canals
Borrow Pit	Transportation
Clay Spot	Rails
Closed Depression	Interstate Highways
Gravel Pit	US Routes
Gravelly Spot	Major Roads
Landfill	Local Roads
Lava Flow	Background
Marsh or swamp	Aerial Photography
Mine or Quarry	
Miscellaneous Water	
Perennial Water	
Rock Outcrop	
Saline Spot	
Sandy Spot	
Severely Eroded Spot	
Sinkhole	
Slide or Slip	
Sodic Spot	

MAP INFORMATION

The soil surveys that comprise your AOI were mapped at 1:24,000.

Warning: Soil Map may not be valid at this scale.

Enlargement of maps beyond the scale of mapping can cause misunderstanding of the detail of mapping and accuracy of soil line placement. The maps do not show the small areas of contrasting soils that could have been shown at a more detailed scale.

Please rely on the bar scale on each map sheet for map measurements.

Source of Map: Natural Resources Conservation Service
Web Soil Survey URL: <http://websoilsurvey.nrcs.usda.gov>
Coordinate System: Web Mercator (EPSG:3857)

Maps from the Web Soil Survey are based on the Web Mercator projection, which preserves direction and shape but distorts distance and area. A projection that preserves area, such as the Albers equal-area conic projection, should be used if more accurate calculations of distance or area are required.

This product is generated from the USDA-NRCS certified data as of the version date(s) listed below.

Soil Survey Area: Spokane County, Washington
Survey Area Data: Version 5, Sep 4, 2014

Soil map units are labeled (as space allows) for map scales 1:50,000 or larger.

Date(s) aerial images were photographed: Jun 4, 2011—Jul 5, 2011

The orthophoto or other base map on which the soil lines were compiled and digitized probably differs from the background imagery displayed on these maps. As a result, some minor shifting of map unit boundaries may be evident.

Map Unit Legend

Spokane County, Washington (WA063)			
Map Unit Symbol	Map Unit Name	Acres In AOI	Percent of AOI
3143	Spens very gravelly loamy coarse sand 30 to 65 percent slopes	5.0	51.5%
7110	Urban land-Opportunity, disturbed complex, 0 to 3 percent slopes	1.8	18.3%
7111	Urban land-Opportunity, disturbed complex, 3 to 8 percent slopes	2.9	30.2%
Totals for Area of Interest		9.6	100.0%



Cleanup Site Details

2/11/2015

SITE ID:	Wendle Motors Inc	Cleanup Site ID:	2402	FS ID:	35172165
Alternate Name(s):	WENDLE FORD, WENDLE FORD NISSAN ISUZU INC, Wendle Motors Inc				
LOCATION:	WRIA: 54	Lat/Long:	47.701	-117.412	View Vicinity Map
Address:	4727 N DIVISION ST SPOKANE 99205	Township	Range	Section	Legislative District: 3 Congressional District: 5
		26N	43E	31	
STATUS:	No Further Action Required	Rank:	View Site Web Page		View Site Documents
Responsible Unit:	Eastern	Site Manager:	Carter, Patti		Statute: MTCA
Is Brownfield?		Has Environmental Covenant?			Is PSI Site?
NFA Received?	Yes	NFA Date:	3/4/2009		NFA Reason: NFA-Voluntary Cleanup Program Review

ASSOCIATED CLEANUP UNIT(s)

culID	Cleanup Unit Name	Unit Type	Process Type	Unit Status	Size (Acres)	ERTS ID
3703	WENDLE FORD NISSAN ISUZU INC	Upland	Voluntary Cleanup Program	Cleanup Complete - Active O&M/Monitoring ongoing		

SITE ACTIVITIES:

Applies to:	Related ID (Unit-LUST-VCP)	Activity Display Name	Status	Start Date	End Date	Legal Mechanism	Performed By	Project Manager
CleanupSite		Site Discovery/Release Report Received			11/16/2007			Leinart, Phil
CleanupSite		Site Status Changed to NFA			3/4/2009			
VcpProject	EA0170	VCP Application	Completed	2/28/2008				
VcpProject	EA0170	VCP Termination	Completed		3/4/2008			
VcpProject	EA0170	VCP Opinion on Cleanup Action Plan	Completed		4/30/2008			Carter, Patti
VcpProject	EA0170	VCP Opinion on Cleanup Action	Completed		1/12/2009			Carter, Patti

AFFECTED MEDIA & CONTAMINANTS:

Media:

Contaminant:	Ground Water	Surface Water	Soil	Sediment	Air	Bedrock
Petroleum Products-Unspecified			R			

Key:

B - Below Cleanup Level
C - Confirmed Above Cleanup Level
S - Suspected

R - Remediated
RA - Remediated-Above
RB - Remediated-Below



Cleanup Site Details

2/11/2015

SPOKANE COUNTY

SITE ID: **WA DOT Eastern Region Mayfair** Cleanup Site ID: 1084 FS ID: 655

Alternate Name(s): SPOKANE DISTRICT 6 SITE, WA DOT Eastern Region, WA DOT Eastern Region Mayfair, WA DOT Mayfair Ust, WA DOT SPOKANE MAYFAIR

LOCATION: WRIA: 54 Lat/Long: 47.683 -117.410 [View Vicinity Map](#)

Address: 2714 N MAYFAIR ST SPOKANE 99207 Township: 25N Range: 43E Section: 8 Legislative District: 3 Congressional District: 5

STATUS: **No Further Action Required** Rank: 5 [View Site Web Page](#) [View Site Documents](#)

Responsible Unit: Eastern Site Manager: Carter, Patti Statute: MTCA
Is Brownfield? Has Environmental Covenant? Is PSI Site?
NFA Received? Yes NFA Date: 9/25/1993 NFA Reason: NFA-Ecology Supervised/Conducted Cleanup

ASSOCIATED CLEANUP UNIT(S)

culID	Cleanup Unit Name	Unit Type	Process Type	Unit Status	Size (Acres)	ERTS ID
431	SPOKANE DISTRICT 6 SITE	Upland	No Process	Cleanup Complete - Active O&M/Monitoring ongoing		

SITE ACTIVITIES:

Applies to:	Related ID (Unit-LUST-VCP)	Activity Display Name	Status	Start Date	End Date	Legal Mechanism	Performed By	Project Manager
CleanupSite		Initial Investigation / Federal Preliminary Assessment	Completed	8/7/1984	9/7/1984		Ecology	O'Flaherty, Patricia
CleanupSite		Site Hazard Assessment/Federal Site Inspection	Completed	8/19/1986	12/19/1986		Ecology	Spencer, Michael J.
CleanupSite		Site Hazard Assessment/Federal Site Inspection	Completed	12/18/1990	1/25/1991		Ecology	Carter, Patti
CleanupSite		Hazardous Sites Listing/NPL			8/27/1991			Carter, Patti
CleanupSite		Remove site from Hazardous Sites List			10/12/1993			Carter, Patti
CleanupSite		Site Status Changed to NFA			9/25/1993			

AFFECTED MEDIA & CONTAMINANTS:

Media:

Contaminant:	Ground Water	Surface Water	Soil	Sediment	Air	Bedrock
Halogenated Organics	R		R			
Non-Halogenated Solvents	R		R			

Key:

B - Below Cleanup Level
C - Confirmed Above Cleanup Level
S - Suspected

R - Remediated
RA - Remediated-Above
RB - Remediated-Below



Cleanup Site Details

2/11/2015

SITE ID:	DRAPERY MART		Cleanup Site ID: 11389		FS ID: 5190
	Alternate Name(s): DRAPERY MART				
LOCATION:	WRIA: 54		Lat/Long: 47.675 -117.416		View Vicinity Map
Address:	225 W INDIANA AVE SPOKANE 99205	Township 25N Range 43E Section 7	Legislative District: 3 Congressional District: 5		
STATUS:	No Further Action Required		Rank:	View Site Web Page	View Site Documents
	Responsible Unit: Eastern	Site Manager: Carter, Patti	Statute: MTCA		
	Is Brownfield?	Has Environmental Covenant?	Is PSI Site?		
	NFA Received? Yes	NFA Date: 1/26/2011	NFA Reason: NFA-Voluntary Cleanup Program Review		

ASSOCIATED CLEANUP UNIT(s)

culD	Cleanup Unit Name	Unit Type	Process Type	Unit Status	Size (Acres)	ERTS ID
11987	Drapery Mart	Upland	Voluntary Cleanup Program	No Further Action Required		

SITE ACTIVITIES:

Applies to:	Related ID (Unit-LUST-VCP)	Activity Display Name	Status	Start Date	End Date	Legal Mechanism	Performed By	Project Manager
CleanupSite		Site Status Changed to NFA			1/26/2011			Carter, Patti
VcpProject	EA0214	VCP Application	Completed	7/14/2010				Carter, Patti
VcpProject	EA0214	VCP Receipt of Plan or Report	Completed	7/19/2010				Carter, Patti
VcpProject	EA0214	VCP Opinion on Site Cleanup	Completed	12/28/2010	1/26/2011			Carter, Patti
VcpProject	EA0214	VCP Termination	Completed		1/26/2011			Carter, Patti

AFFECTED MEDIA & CONTAMINANTS:

Media:

Contaminant:	Ground Water	Surface Water	Soil	Sediment	Air	Bedrock
Polynuclear Aromatic Hydrocarbons			RA			

Key:

B - Below Cleanup Level
C - Confirmed Above Cleanup Level
S - Suspected

R - Remediated
RA - Remediated-Above
RB - Remediated-Below

Spokane County

SITE ID and LOCATION		View Site Web Page		View Site Documents	
FS ID	CS ID	Cleanup Site Name & Address	Site Manager	NFA Date	Site Status & Rank
5190	11389	DRAPERY MART 225 W INDIANA AVE SPOKANE 99205	Carter, Patti	1/26/2011 12:00:00 NFA ...	NFA
ENVIRONMENTAL COVENANTS & other INSTITUTIONAL CONTROLS					
Instrument Type	Notes	County Recording #	County Recording Date	Control Type Details	
Environmental Covenant	Environmental Covenant	5968986	1/11/2011	Engineering Control Use Restriction	Impermeable Surface Restrict Land Use

Report Legend

The **Environmental Covenants* Registry** is a list of sites that have residual contamination remaining on them after the cleanup has been completed. These sites have environmental covenants or deed restrictions limiting certain uses of the property. Example covenants would be those prohibiting the drilling of a water supply well on the property or use of the property for residential uses.

* The terms 'Environmental Covenant', 'Institutional Control' and 'Restrictive Covenant' have been used synonymously over time.

Acronyms

FS ID = Facility-Site Identification Number (Ecology use)

CS ID = Cleanup Site Identification Number (Toxics Cleanup Program use)

NFA = 'No Further Action' determination

Rank = Washington Ranking Method or WARM Score (0-Federal Superfund, 1-Highest Assessed Risk, through 5-Lowest Assessed Risk).



DEPARTMENT OF
ECOLOGY
State of Washington

Cleanup Site Details

2/11/2016

SPOKANE COUNTY

SITE ID: DEE'S AUTO SERVICE Cleanup Site ID: 9316 FS ID: 46315262

Alternate Name(s): DEE'S AUTO SERVICE, DEES AUTO SERVICE

LOCATION: Address: 206 W INDIANA SPOKANE 99205 WRIA: 54 Lat/Long: 47.675 -117.415 View Vicinity Map

Range 43E Section 7 Legislative District: 3 Congressional District: 5

STATUS: Cleanup Started Rank: View Site Web Page View Site Documents

Responsible Unit: Eastern Site Manager: Boatsman, Michael Statute: MTCA

Is Brownfield? Has Environmental Covenant? Is PSI Site?

NFA Received? NFA Date: NFA Reason:

ASSOCIATED CLEANUP UNIT(S)

CUID	Cleanup Unit Name	Unit Type	Process Type	Unit Status	Size (Acres)	ERTS ID
9008	DEE'S AUTO SERVICE	Upland	Independent Action	Cleanup Started		

SITE ACTIVITIES:

Applies to:	Related ID (Unit-LUST-VCP)	Activity Display Name	Status	Start Date	End Date	Legal Mechanism	Performed By	Project Manager
LUST	2617	LUST - Notification		3/17/1993	3/17/1993			
LUST	2617	LUST - Report Received		5/17/1993	5/17/1993			


AFFECTED MEDIA & CONTAMINANTS:

Media:

Contaminant:	Ground Water	Surface Water	Soil	Sediment	Air	Bedrock
Petroleum-Other			C			

Key:

B - Below Cleanup Level
C - Confirmed Above Cleanup Level
R - Remediated
RA - Remediated-Above
RB - Remediated-Below
S - Suspected



DEPARTMENT OF

ECOLOGY

State of Washington

Cleanup Site Details

2/1/2015

SITE ID:

NORTHTOWN CHEVRON

Alternate Name(s):

NORTHTOWN CHEVRON, NORTHTOWN GAS & DELI, NORTHTOWN GAS & DELI MART, UNOCAL 2542

Cleanup Site ID: 9921

FS ID: 62275415

LOCATION:

Address:

4615 N DIVISION SPOKANE

WRJA: 54

Lat/Long: -117.412

Range

43E

Section

6

Legislative District: 3

Congressional District: 5

STATUS:

No Further Action Required

View Site Web Page

View Site Documents

Responsible Unit: Eastern

Site Manager: Eastern Region

Statute: MTCA

Is Brownfield?

Is PSI Site?

NFA Received? Yes

NFA Date: 1/30/2012

NFA Reason: NFA-Initial Investigation

ASSOCIATED CLEANUP UNIT(S)

cuid	Cleanup Unit Name	Unit Type	Process Type	Unit Status	Size (Acres)	ERTS ID
9613	NORTHTOWN CHEVRON	Upland	Independent Action	No Further Action Required		

SITE ACTIVITIES:

Applies to:	Related ID (Unit-LUST-VCP)	Activity Display Name	Status	Start Date	End Date	Legal Mechanism	Performed By	Project Manager
CleanupSite		Site Status Changed to NFA			1/30/2012			Ladwig, Doug
LUST	2226	LUST - Notification		12/18/1989	12/18/1989			Leinart, Phil
LUST	2226	LUST - Report Received		12/13/1989	12/18/1989			

AFFECTED MEDIA & CONTAMINANTS:

Media:

Contaminant:	Ground Water	Surface Water	Soil	Sediment	Air	Bedrock
Petroleum-Other			C			

Key:

B - Below Cleanup Level

R - Remediated

C - Confirmed Above Cleanup Level

RA - Remediated-Above

S - Suspected

RB - Remediated-Below

Toxics Cleanup Program

Integrated Site Information System

Page 8 of 16



DEPARTMENT OF
ECOLOGY
State of Washington

Cleanup Site Details

2/10/2015

SPOKANE COUNTY

SITE ID:		RAY BROWNS TIRE CENTER		Cleanup Site ID: 10183		FS ID: 68891858	
Alternate Name(s):		RAY BROWNS TIRE CENTER					
LOCATION:		WRJA: 54		Lat/Long: 47.697 -117.411		View Vicinity Map	
Address:		4218 N DIVISION SPOKANE 99207		Township 25N Range 43E Section 5		Legislative District: 3 Congressional District: 5	
STATUS:		No Further Action Required		View Site Web Page		View Site Documents	
Responsible Unit: Eastern		Site Manager: Eastern Region		Statute: MTCA			
Is Brownfield?		Has Environmental Covenant?		Is PSI Site?			
NFA Received? Yes		NFA Date: 3/11/2013		NFA Reason: NFA-Initial Investigation			

ASSOCIATED CLEANUP UNIT(S)

cuid	Cleanup Unit Name	Unit Type	Process Type	Unit Status	Size (Acres)	ERTS ID
9875	RAY BROWNS TIRE CENTER	Upland	Independent Action	No Further Action Required		

SITE ACTIVITIES:

Applies to:	Related ID (Unit-LUST-VCP)	Activity Display Name	Status	Start Date	End Date	Legal Mechanism	Performed By	Project Manager
CleanupSite		Site Status Changed to NFA			3/11/2013			Ladwig, Doug
LUST	1986	LUST - Notification		1/9/1990	1/9/1990			
LUST	1986	LUST - NFA Determination II or SHA			3/11/2013			Ladwig, Doug

AFFECTED MEDIA & CONTAMINANTS:

Media:

Contaminant:	Ground Water	Surface Water	Soil	Sediment	Air	Bedrock
Petroleum-Other						

Key:

B - Below Cleanup Level
C - Confirmed Above Cleanup Level
S - Suspected
R - Remediated
RA - Remediated-Above
RB - Remediated-Below

CleanupSiteDetails2014



DEPARTMENT OF
ECOLOGY
State of Washington

Cleanup Site Details

2/10/2015

SPOKANE COUNTY

SITE ID:	SPOKANE FIRE DEPARTMENT STATION 10			Cleanup Site ID: 7762	FS ID: 7772647
Alternate Name(s):	SPOKANE FIRE DEPARTMENT STATION 10, SPOKANE FIRE DISTRICT STATION 10				
LOCATION:	View Vicinity Map				
Address:	3608 N DIVISION SPOKANE	99207	WRIA: 54	Lat/Long: 47.691 -117.411	Legislative District: 3 Congressional District: 5
Township:	25N	Range:	43E	Section:	5
STATUS:	No Further Action Required		Rank:	View Site Web Page	
Responsible Unit:	Eastern	Site Manager:	Eastern Region	Statute:	MTCA
Is Brownfield?		Has Environmental Covenant?		Is PSI Site?	
NFA Received?	Yes	NFA Date:	2/1/2012	NFA Reason:	NFA-Initial Investigation

ASSOCIATED CLEANUP UNIT(S)

cuid	Cleanup Unit Name	Unit Type	Process Type	Unit Status	Size (Acres)	ERTS ID
7454	SPOKANE FIRE DEPARTMENT STATION 10	Upland	Independent Action	No Further Action Required		

SITE ACTIVITIES:

Applies to:	Related ID (Unit-LUST-VCP)	Activity Display Name	Status	Start Date	End Date	Legal Mechanism	Performed By	Project Manager
CleanupSite		Site Status Changed to NFA			2/1/2012			Ladwig, Doug
LUST	2671	LUST - Notification		2/10/1993	2/10/1993			
LUST	2671	LUST - Report Received		2/19/1993	2/19/1993			

AFFECTED MEDIA & CONTAMINANTS:

Media:

Contaminant:	Ground Water	Surface Water	Soil	Sediment	Air	Bedrock
Petroleum-Diesel						
			C			

Key:

B - Below Cleanup Level
C - Confirmed Above Cleanup Level
S - Suspected
R - Remediated
RA - Remediated-Above
RB - Remediated-Below



2/11/2015

SITE ID:	New Concepts Auto Service		GOODYEAR AUTO SERVICE 8949, GOODYEAR AUTO SERVICE CENTER 8949, GOODYEAR NEW CONCEPTS, NEW CONCEPTS, New Concepts Auto Service		Cleanup Site ID: 6121	FS ID: 45929915
Alternate Name(s):						
LOCATION:						
Address:	4423 N DIVISION ST SPOKANE	99207	WRIA: 54	Lat/Long:	47.698	-117.412
				Township	Range	Section
				25N	43E	6
STATUS:			No Further Action Required	Rank:	View Site Web Page	
Responsible Unit:	Eastern		Site Manager:	Carter, Patti	Statute: MTCA	
Is Brownfield?			Has Environmental Covenant?		Is PSI Site?	
NFA Received?	Yes		NFA Date:	3/26/1998	NFA Reason: NFA-Voluntary Cleanup Program Review	
			View Site Documents			
			Legislative District: 3			
			Congressional District: 5			

ASSOCIATED CLEANUP UNIT(S)

cuid	Cleanup Unit Name	Unit Type	Process Type	Unit Status	Size (Acres)	ERTS ID
6154	GOODYEAR AUTO SERVICE CENTER 8949	Upland	Voluntary Cleanup Program	No Further Action Required		

SITE ACTIVITIES:

Applies to:	Related ID (Unit-LUST-VCP)	Activity Display Name	Status	Start Date	End Date	Legal Mechanism	Performed By	Project Manager
CleanupSite		Site Status Changed to NFA			3/26/1998			
LUST	4445	LUST - Notification		10/30/1997	10/30/1997			Boatsman, Michael
LUST	4445	LUST - Report Received		12/10/1996	12/11/1996			
VcpProject	EA0021	VCP Application	Completed	1/22/1998				
VcpProject	EA0021	VCP Termination	Completed		3/26/1998			
VcpProject	EA0021	VCP Opinion on Cleanup Action	Canceled					Carter, Patti

AFFECTED MEDIA & CONTAMINANTS:

Contaminant:	Ground Water	Surface Water	Soil	Sediment	Air	Bedrock
Petroleum-Other						

Media:

Key:

B - Below Cleanup Level

C - Confirmed Above Cleanup Level

S - Suspected

R - Remediated

RA - Remediated-Above

RB - Remediated-Below



DEPARTMENT OF
ECOLOGY
State of Washington

Cleanup Site Details

2/11/2015

SITE ID:	SURE SAVE GROCERY		Cleanup Site ID: 6969		FS ID: 97671837	
Alternate Name(s): MONROE SURE SAVE GROCERY, SURE SAVE GROCERY						
LOCATION:	3039 N MONROE ST SPOKANE		Address: 99205-0000	WRJA: 54	Lat/Long: 47.686 -117.427	View Vicinity Map
				Range: 43E	Section: 7	Legislative District: 3 Congressional District: 5
STATUS:	No Further Action Required		Rank:	View Site Web Page		
	Responsible Unit: Eastern	Site Manager: Carter, Patti	Statute: MTCA			
	Is Brownfield?	Has Environmental Covenant?	Is PSI Site?			
	NFA Received? Yes	NFA Date: 10/27/2009	NFA Reason: NFA-Voluntary Cleanup Program Review			

ASSOCIATED CLEANUP UNIT(S)

culd	Cleanup Unit Name	Unit Type	Process Type	Unit Status	Size (Acres)	ERTS ID
6982	MONROE SURE SAVE GROCERY	Upland	Voluntary Cleanup Program	No Further Action Required		

SITE ACTIVITIES:

Applies to:	Related ID (Unit-LUST-VCP)	Activity Display Name	Status	Start Date	End Date	Legal Mechanism	Performed By	Project Manager
CleanupSite		Site Status Changed to NFA			10/27/2009			
LUST	6366	LUST - Notification		4/18/2008	4/18/2008			Cocke, Jason
LUST	6366	LUST - Report Received		7/10/2008	7/29/2009			
VcpProject	EA0198	VCP Application	Completed	8/10/2009				
VcpProject	EA0198	VCP Termination	Completed		10/27/2009			
VcpProject	EA0198	VCP Opinion on Cleanup Action	Completed		10/27/2009			Carter, Patti

AFFECTED MEDIA & CONTAMINANTS:

Media:

Contaminant:	Ground Water	Surface Water	Soil	Sediment	Air	Bedrock
Petroleum-Gasoline						
			R			

Key:
B - Below Cleanup Level
C - Confirmed Above Cleanup Level
S - Suspected
R - Remediated
RA - Remediated-Above
RB - Remediated-Below



Cleanup Site Details

2/10/2015

SPOKANE COUNTY

SITE ID: JRS TOWN PUMP CARWASH Cleanup Site ID: 10435 FS ID: 76139192

Alternate Name(s): JRS TOWN PUMP CARWASH

LOCATION: Address: 2725 N DIVISION SPOKANE 99207 WRIA: 54 Lat/Long: 47.683 -117.411 View Vicinity Map

Range 43E Section 7 Legislative District: 3 Congressional District: 5

STATUS: No Further Action Required View Site Web Page View Site Documents
Responsible Unit: Eastern Site Manager: Eastern Region Statute: MTCA
Is Brownfield? Has Environmental Covenant? Is PSI Site?
NFA Received? Yes NFA Date: 2/1/2012 NFA Reason: NFA-Initial Investigation

ASSOCIATED CLEANUP UNIT(S)

cuid	Cleanup Unit Name	Unit Type	Process Type	Unit Status	Size (Acres)	ERTS ID
10127	JRS TOWN PUMP CARWASH	Upland	Independent Action	No Further Action Required		

SITE ACTIVITIES:

Applies to:	Related ID (Unit-LUST-VCP)	Activity Display Name	Status	Start Date	End Date	Legal Mechanism	Performed By	Project Manager
CleanupSite		Site Status Changed to NFA			2/1/2012			Ladwig, Doug
LUST	2443	LUST - Notification		11/24/1992	11/24/1992			
LUST	2443	LUST - Report Received		3/16/1993	3/16/1993			

AFFECTED MEDIA & CONTAMINANTS:

Media:

Contaminant:	Ground Water	Surface Water	Soil	Sediment	Air	Bedrock
Petroleum-Other						

Key:
B - Below Cleanup Level
C - Confirmed Above Cleanup Level
S - Suspected
R - Remediated
RA - Remediated-Above
RB - Remediated-Below

CleanupSiteDetails2014

Toxics Cleanup Program

Integrated Site Information System

Page 1 of 1



DEPARTMENT OF
ECOLOGY
State of Washington

Cleanup Site Details

2/1/2015

SPOKANE COUNTY

SITE ID:	NATIONAL MUSIC SERVICE CORP		Cleanup Site ID: 11033	FS ID: 91568352
Alternate Name(s):	NATIONAL MUSIC SERVICE CORP, NATIONAL MUSIC SERVICE CORPORATION, National Music Service Inc			
LOCATION:				
Address:	122 E MONTGOMERY AVE SPOKANE	99207	Lat/Long: 47.678 Township 25N Range 43E Section 8	View Vicinity Map Legislative District: 3 Congressional District: 5
STATUS:				
No Further Action Required	View Site Web Page			
Responsible Unit: Eastern Is Brownfield?	Statute: MTCA Is PSI Site?			
NFA Received? Yes	NFA Reason: NFA-Initial Investigation			

ASSOCIATED CLEANUP UNIT(S)

cuid	Cleanup Unit Name	Unit Type	Process Type	Unit Status	Size (Acres)	ERTS ID
10725	NATIONAL MUSIC SERVICE CORP	Upland	Independent Action	No Further Action Required		

SITE ACTIVITIES:

Applies to:	Related ID (Unit-LUST-VCP)	Activity Display Name	Status	Start Date	End Date	Legal Mechanism	Performed By	Project Manager
CleanupSite		Site Status Changed to NFA			3/22/2013			Boatsman, Michael
LUST	2201	LUST - Notification		11/20/1989	11/20/1989			
LUST	2201	LUST - NFA Determination II or SHA		3/9/1990	3/22/2013			Boatsman, Michael
LUST	2201	LUST - Report Received		3/9/1990	3/9/1990			
LUST	2201	LUST - Report Received		2/1/1998	2/27/2013			
LUST	2201	LUST - Report Received		7/12/1990	7/12/1990			

AFFECTED MEDIA & CONTAMINANTS:

Media:

Contaminant:	Ground Water	Surface Water	Soil	Sediment	Air	Bedrock
Petroleum-Other						

Key:

B - Below Cleanup Level
C - Confirmed Above Cleanup Level
R - Remediated
RA - Remediated-Above
RB - Remediated-Below
S - Suspected



Cleanup Site Details

2/11/2015

SITE ID: EDUCATIONAL SERVICE DISTRICT 101 Cleanup Site ID: 10620 FS ID: 81868643

Alternate Name(s): EDUCATIONAL SERVICE 101, EDUCATIONAL SERVICE DISTRICT 101

LOCATION: Address: 1025 W INDIANA SPOKANE 99205-4400 WRIA: 54 Range: 47.675 Section: -117.428 Township: 25N Congressional District: 5 Legislative District: 3 View Vicinity Map

STATUS: No Further Action Required Responsible Unit: Eastern Is Brownfield? Yes NFA Received? Yes NFA Date: 8/30/2011 NFA Reason: NFA-Initial Investigation View Site Documents

Site Manager: Eastern Region Rank: MTCA Is PSI Site? View Site Web Page

Has Environmental Covenant?

ASSOCIATED CLEANUP UNIT(S)

culd	Cleanup Unit Name	Unit Type	Process Type	Unit Status	Size (Acres)	ERTS ID
10312	EDUCATIONAL SERVICE DISTRICT 101	Upland	Independent Action	No Further Action Required		

SITE ACTIVITIES:

Applies to:	Related ID (Unit-LUST-VCP)	Activity Display Name	Status	Start Date	End Date	Legal Mechanism	Performed By	Project Manager
CleanupSite		Site Status Changed to NFA			8/30/2011			Ladwig, Doug
LUST	2141	LUST - Notification		9/25/1989	9/25/1989			
LUST	2141	LUST - Report Received		9/25/1989	9/25/1989			

AFFECTED MEDIA & CONTAMINANTS:

Media:

Contaminant:	Ground Water	Surface Water	Soil	Sediment	Air	Bedrock
Petroleum-Other						

Key:

B - Below Cleanup Level
C - Confirmed Above Cleanup Level
S - Suspected

R - Remediated
RA - Remediated-Above
RB - Remediated-Below



Cleanup Site Details

2/11/2015

SITE ID:	MONROE QUIK STOP		Cleanup Site ID: 10473		FS ID: 77257143	
Alternate Name(s): GULL QWIK STOP 1640, MONROE QUIK STOP, MONROE QWIK STOP, N MONROE GAS, QWIK STOP 1640						
LOCATION:			WRIA: 54	Lat/Long: 47.678	-117.428	View Vicinity Map
Address:	2202 N MONROE ST SPOKANE	99205	Township 25N	Range 43E	Section 7	Legislative District: 3 Congressional District: 5
STATUS:	No Further Action Required		Rank:	View Site Web Page View Site Documents		
	Responsible Unit: Eastern	Site Manager: Eastern Region	Statute: MTCA			
	Is Brownfield?	Has Environmental Covenant?	Is PSI Site?			
	NFA Received? Yes	NFA Date: 10/31/2007	NFA Reason:	Historic LUST NFA		

ASSOCIATED CLEANUP UNIT(S)

CULID	Cleanup Unit Name	Unit Type	Process Type	Unit Status	Size (Acres)	ERTS ID
10165	MONROE QUIK STOP	Upland	Independent Action	No Further Action Required		

SITE ACTIVITIES:

Applies to:	Related ID (Unit-LUST-VCP)	Activity Display Name	Status	Start Date	End Date	Legal Mechanism	Performed By	Project Manager
CleanupSite		Site Status Changed to NFA			10/31/2007			
LUST	6263	LUST - Notification		1/4/2007	1/4/2007			Boatsman, Michael
LUST	6263	LUST - Report Received		2/23/2007	2/26/2007			

AFFECTED MEDIA & CONTAMINANTS:

Media:

Contaminant:	Ground Water	Surface Water	Soil	Sediment	Air	Bedrock
Petroleum-Gasoline			C			

Key:

B - Below Cleanup Level

C - Confirmed Above Cleanup Level

S - Suspected

R - Remediated

RA - Remediated-Above

RA = Remediated-Above
RB = Remediated-Below



DEPARTMENT OF
ECOLOGY
State of Washington

Cleanup Site Details

2/1/2016

SPOKANE COUNTY

SITE ID: NORTH CENTRAL CARE CENTER Cleanup Site ID: 10433 FS ID: 76137221

Alternate Name(s): NORTH CENTRAL CARE CENTER

LOCATION: Address: 618 W NORA SPOKANE 99207-2449 WRIA: 54 Lat/Long: 47.674 -117.421 View Vicinity Map

Range 43E Section 7 Legislative District: 3 Congressional District: 5

STATUS: No Further Action Required View Site Web Page View Site Documents

Responsible Unit: Eastern Site Manager: Boatsman, Michael Statute: MTCA

Is Brownfield? Has Environmental Covenant? Is PSI Site?

NFA Received? Yes NFA Date: 8/30/2011 NFA Reason: NFA-Initial Investigation

ASSOCIATED CLEANUP UNIT(S)

cuid	Cleanup Unit Name	Unit Type	Process Type	Unit Status	Size (Acres)	ERTS ID
10125	NORTH CENTRAL CARE CENTER	Upland	Independent Action	Reported Cleaned Up		

SITE ACTIVITIES:

Applies to:	Related ID (Unit-LUST-VCP)	Activity Display Name	Status	Start Date	End Date	Legal Mechanism	Performed By	Project Manager
CleanupSite		Site Status Changed to NFA			8/30/2011			Boatsman, Michael
LUST	3378	LUST - Notification		4/12/1994	4/12/1994			
LUST	3378	LUST - NFA Determination II or SHA			8/23/2011			Boatsman, Michael
LUST	3378	LUST - Report Received		5/26/1994	5/26/1994			

AFFECTED MEDIA & CONTAMINANTS:

Media:

Contaminant:	Ground Water	Surface Water	Soil	Sediment	Air	Bedrock
Petroleum-Other			C			

Key:

B - Below Cleanup Level
C - Confirmed Above Cleanup Level
S - Suspected
R - Remediated
RA - Remediated-Above
RB - Remediated-Below

SITE ID:

SOUTHLAND FACILITY 18395

Cleanup Site ID:

6923

FS ID:

34918382

Alternate Name(s):

7 ELEVEN, 7 ELEVEN STORE 18395, 7 ELEVEN STORE 2301 18395D, 7-ELEVEN 2301-18395D, SOUTHLAND FACILITY 18395

LOCATION:

Address:

323 W INDIANA AVE

99205

25N

43E

7

WRJA: 54

Lat/Long: 47.675 -117.417

View Site Web Page

View Site Documents

STATUS:

No Further Action Required

Responsible Unit: Eastern

Site Manager: Carter, Patti

Is Brownfield?

Has Environmental Covenant?

NFA Received? Yes

NFA Date: 4/19/1999

NFA Reason: NFA-Voluntary Cleanup Program Review

View Site Web Page

View Site Documents

ASSOCIATED CLEANUP UNIT(S)					
cuid	Cleanup Unit Name	Unit Type	Process Type	Unit Status	ERTS ID
6421	7-ELEVEN 2301-18395D	Upland	Voluntary Cleanup Program	No Further Action Required	500816, E500816

SITE ACTIVITIES:									
Applies to:	Related ID (Unit-LUST-VCP)	Activity Display Name	Status	Start Date	End Date	Legal Mechanism	Performed By	Project Manager	
CleanupSite		Initial Investigation / Federal Preliminary Assessment	Completed	2/9/1999	2/9/1999		Ecology	Charloe, Debbie	
CleanupSite		Early Notice Letter(s)			2/9/1999			Charloe, Debbie	
CleanupSite		Site Status Changed to NFA			4/19/1999				
LUST	5116	LUST - Notification		10/30/1998	10/30/1998				
LUST	5116	LUST - Report Received		11/30/1998	1/22/1999				
VcpProject	EA0028	VCP Application	Completed	1/22/1999					
VcpProject	EA0028	VCP Termination	Completed		4/19/1999				
VcpProject	EA0028	VCP Opinion on Cleanup Action	Canceled					Carter, Patti	

AFFECTED MEDIA & CONTAMINANTS:

Media:

Contaminant:

Petroleum-Other

Ground Water

Surface Water

Soil

Sediment

Air

Bedrock

C

Key:

B - Below Cleanup Level

C - Confirmed Above Cleanup Level

S - Suspected

R - Remediated

RA - Remediated-Above

RB - Remediated-Below

Toxics Cleanup Program

Integrated Site Information System

Page 4 of 5

EPA REGION 10 ACTIVE LUST SITES ON INDIAN LANDS (as of 1/29/09)

	Facility ID	Facility Name	Address	City	State	Tribes	Confirmed Release	Cleanup Initiated
1	2100026	Plummer Quick Stop	Hwy. 195 & 5	Plummer	ID	Coeur D'Alene	2/5/95	
2	2400007	Clearwater Forest Industries	Hwy. 13 S., P.O. Box 340	Kooskia	ID	Nez Perce	7/29/96	
3	2400011	McCoy's Cash Grocery	301 Main St.	Kooskia	ID	Nez Perce	8/21/02	12/8/02
4	2400012	Ferdinand Service Station	Main St.	Ferdinand	ID	Nez Perce	3/26/08	3/26/08
5	2400039	Bovey Oil Cragmont Fuel Station	Division & Main Sts.	Craigmont	ID	Nez Perce	3/22/00	7/19/06
6	4020011	Inchelium Tribal Wood Treatment Plant	P.O. Box 286	Inchelium	WA	Colville	10/1/92	10/12/92
7	4080005	Former Makah AFS	Makah ARSR	Neah Bay	WA	Makah	1/30/04	
8	4080014	USCG Cape Flattery Lighthouse	Tatoosh Island	Neah Bay	WA	Makah	9/16/98	9/16/98
9	4090003	Circle K #1477 (now Muckleshoot Market & Deli)	2802 Auburn Way S.	Auburn	WA	Muckleshoot	6/5/03	9/18/03
10	4090004	FAA Seattle Air Route Traffic Control Center	3101 Auburn Way S.	Auburn	WA	Muckleshoot	4/13/07	4/13/07
11	4140001	USCG Station Quillayute River	End of LaPush Rd., P.O. Box 9	La Push	WA	Quillayute	7/8/99	7/8/99
12	4260010	Lindsey Lockers	5001 Evans Rd.	Wapato	WA	Yakama	11/13/95	9/1/96
13	4260038	Wapato Food Mart (Time Oil)	97831 Hwy. 97	Wapato	WA	Yakama	11/28/07	2/29/08
14	4260087	Smitty's Conoco	102 E. Toppenish Ave.	Toppenish	WA	Yakama	6/1/04	6/21/05
15	4260088	Toppenish Chevron #91785 (now Topp Stop Texaco)	321 S. Elm St.	Toppenish	WA	Yakama	9/10/91	9/10/91
16	4260105	Brand X (now Toppenish Shell)	401 W. Elm St.	Toppenish	WA	Yakama	5/31/91	3/1/95
17	4260108	Yesterday's Treasures	Wapato & Cambell Rd.	Wapato	WA	Yakama	4/21/91	3/31/92
18	4260117	BIA Branch of Roads	Allotment 3635, Island Rd.	Toppenish	WA	Yakama	3/10/95	3/10/95
19	4260118	Yakama Nation Landfill / Transfer Station	4500 Pumphouse Rd.	Toppenish	WA	Yakama	2/28/96	2/28/96
20	4260120	Inland Fruit and Produce	300 N. Frontage Rd.	Wapato	WA	Yakama	12/8/98	12/8/98
21	4260125	Yakima Hops - Boyville	W. Monroe & Sunnyside-Mabton Rd.	Mabton	WA	Yakama	2/5/04	11/2/04
22	4260126	Toppenish Auto Corral	408 W. 1st Ave.	Toppenish	WA	Yakama	12/12/06	
23	4260128	Signal Peak Ranger Station	BIA Road 140	White Swan	WA	Yakama	10/17/06	9/29/08

EPA Region 10 Indian Lands Closed LUST Sites (as of 1/28/09)

Facility ID	Facility Name	Address	City	State	Tribes	Confirmed Release	Cleanup Initiated	Cleanup Completed
1	1100002 Metlakatla Police Station	8th Ave.	Annette Island	AK	Metlakatla	8/27/03	8/27/03	3/31/05
2	1100003 Varsity Service Station	Atkinson St.	Annette Island	AK	Metlakatla	8/27/03	8/27/03	3/31/05
3		S. side of Hatchery Rd. at Airport Rd.	Annette Island	AK	Metlakatla	6/15/99	6/15/99	8/2/05
4	2100005 BIA Road Shop							
4	2100019 Idaho Dept. of Lands	1806 Main Ave.	Saint Maries	ID	Coeur D'Alene	5/1/93	5/1/93	11/12/97
5	2100028 St. Maries Oil	2242 Idaho Ave.	St. Maries	ID	Coeur D'Alene	2/7/94	2/13/95	7/12/07
6	2100029 Mullan Trail Service	1500 Main Ave.	St. Maries	ID	Coeur D'Alene	12/1/93	3/20/94	11/25/96
7	2100031 Tensed Service Station	231 Hwy. 95	Plummer	ID	Coeur D'Alene	12/21/94	5/3/95	6/15/05
8	2100033 Rockford Bay Marina	8700 W. Rockford Bay Rd.	Coeur D'Alene	ID	Coeur D'Alene	4/1/01	4/1/01	3/29/05
9	2100034 Fighting Creek Trading Post	16555 U.S. Hwy. 95 S	Coeur D'Alene	ID	Coeur D'Alene	3/1/93	3/1/93	10/29/08
10	2100036 Worley Highway District	W. 9720 B St.	Worley	ID	Coeur D'Alene	5/11/94	5/11/94	10/20/97
11	2100040 BIA - Coeur d'Alene	Rt. 1	Plummer	ID	Coeur D'Alene	4/1/97	4/1/97	9/7/97
12	2100041 BIA Roads Dept. - Road Shop	850 A St.	Plummer	ID	Coeur D'Alene	9/8/98	9/8/98	9/28/06
13	2100042 Old Cenex (Co-op Supply)	9825 F St.	Worley	ID	Coeur D'Alene	5/17/00	5/17/00	12/24/02
14	2100045 City Service Valcon	Hwy 95, MP 382	Tensed	ID	Coeur D'Alene	5/24/05	5/24/05	11/15/06
15	2200004 Stop 'n Shop	91 Old Hwy.	Pocatello	ID	Shoshone-Bannock	3/9/92	5/19/99	9/9/02
16	2200005 BIA Fort Hall Agency, Fort Hall Irrigation		Fort Hall	ID	Shoshone-Bannock	5/23/91	10/25/00	6/24/04
17	2200010 Trading Post Gas (formerly Tee Pee)	I-15, Exit 80	Fort Hall	ID	Shoshone-Bannock	11/9/02	11/9/02	1/6/03
18	2200013 FMC, Inc. - Pocatello	Rt. 30 W of Pocatello, P.O. Box 4111	Pocatello	ID	Shoshone-Bannock	7/25/07	8/13/06	10/27/08
19	2200015 National Car Rental	20369 Terminal Way #10, Pocatello Municipal Airport	Pocatello	ID	Shoshone-Bannock	2/18/92	3/4/93	11/5/96
20	2200017 Union Pacific Railroad - Fort Hall	Milepost 146.0	Fort Hall	ID	Shoshone-Bannock	8/17/89	9/29/90	3/16/93
21	2200021 Cedar Farms Rio Vista Road	Rio Vista Rd. & Calico Rd.	Fort Hall	ID	Shoshone-Bannock	5/14/98	9/30/98	3/14/00
22	2200023 Avcenter, Inc.	1483 Flightline	Pocatello	ID	Shoshone-Bannock	11/5/05	11/7/05	5/31/07
23	2200038 BIA Fort Hall Agency, Branch of Roads	P.O. Box 220, Fort Hall Agency Campus	Fort Hall	ID	Shoshone-Bannock	2/8/94	2/8/94	3/14/00
24	2200043 Cedar Farms Broncho Road Shop (Murdock Shop)	Hwy. 91 & Broncho Rd.	Fort Hall	ID	Shoshone-Bannock	11/19/98	12/8/99	3/16/00
25	2200045 Harmon Farms	Rt. 2 North Box 66D at Philbin and Cedar Rds.	Pocatello	ID	Shoshone-Bannock	3/25/03	3/26/03	11/27/07
26	2400005 Nezperce Rochdale	S. Pine Industrial Area	Nezperce	ID	Nez Perce	7/22/98	11/18/03	4/25/06
27	2400006 Clearwater County Road Dept.	CPRR Grounds, P.O. Box 812	Orofino	ID	Nez Perce	7/8/94	7/8/94	10/20/97
28	2400009 Tom Cat & Frank's Sporting Goods Store	618 East Business Alt. Hwy. 12 (Broadway Ave.)	Kooskia	ID	Nez Perce	6/21/99	6/21/99	10/3/02
29	2400010 Sunset Mart #9	101 S. Main St.	Kooskia	ID	Nez Perce	5/6/93	8/1/93	11/28/97
30	2400017 Jack's Pit Stop	519 Oak St.	Nezperce	ID	Nez Perce	5/6/93	5/6/93	5/6/93
31	2400018 8th Over Truck Stop	114 N. Main St.	Kooskia	ID	Nez Perce	12/1/92	1/1/01	4/25/06
32	2400023 Central Highway District	501 Boulevard	Craigmont	ID	Nez Perce	12/1/93	12/1/93	1/6/98
33	2400033 Dworshak National Fish Hatchery	P.O. Box 48	Ahsahka	ID	Nez Perce	10/1/98	10/1/98	9/10/02
34	2400047 Henderson Fuel Stop, Inc.	7450 N & S Hwy.	Lewiston	ID	Nez Perce	5/6/93	5/6/93	5/6/93
35	2400051 Pit Stop	Hwy. 12 & 3rd St.	Kamiah	ID	Nez Perce	12/20/99	12/20/99	5/28/04
36	2400058 #21600 Orofino MTCE Yard	Hwy. 12, 1 Mi. W Orofino, Box 187	Orofino	ID	Nez Perce	10/23/97	10/23/97	10/23/97
37	2400060 Orofino Chevron	180 Michigan Ave.	Orofino	ID	Nez Perce	9/14/93	9/14/93	3/12/96
38	2400070 Tom's Sinclair	321 Main St.	Stites	ID	Nez Perce	4/18/94	3/31/00	5/25/06
39	2400072 Sunset Mart #8	11530 Hwy. 12	Orofino	ID	Nez Perce	11/6/89	2/18/00	4/3/00

EPA Region 10 Indian Lands Closed LUST Sites (as of 1/28/09)

Facility ID	Facility Name	Address	City	State	Tribes	Confirmed Release	Cleanup Initiated	Cleanup Completed
40	2400073	Sunset Mart #3	Orofino	ID	Nez Perce	8/23/90	9/14/90	12/4/02
41	2400077	Nez Perce County Road Dept.	Lapwai	ID	Nez Perce	11/7/91	11/7/91	12/20/07
42	2400078	Idaho Department of Lands	Orofino	ID	Nez Perce	8/8/93	8/8/93	11/26/97
43	2400088	Three Rivers Timber, Inc.	Woodland Rd.	ID	Nez Perce	5/1/94	7/13/94	15/00
44	2400090	Idaho Department of Lands	14 E. Lorahama	ID	Nez Perce	5/17/93	5/27/93	12/1/93
45	2400091	Idaho Dept. of Lands	U.S. Hwy. 12	ID	Nez Perce	8/7/90	8/7/90	4/25/06
46	2400098	Barney's Super Market	13030 Hwy. 12	ID	Nez Perce	7/1/99	7/1/99	9/13/02
47	2400100	Idaho Transport. Dept. - Craigmont	State Hwy. 62, MP 0	ID	Nez Perce	8/25/93	8/25/93	9/10/96
48	2400101	Dean Jurgens	Thom Spring Rd.	ID	Nez Perce	2/1/93	2/1/93	3/12/96
49	2400108	Valley View Station	Rt. 1, Hwy. 12	ID	Nez Perce	2/9/99	2/9/99	9/13/02
50	2400111	Orofino Central Office	217 Michigan St.	ID	Nez Perce	7/28/98	7/28/98	9/21/01
51	2400112	Jerry Martin	Rt. 1, Box 551	ID	Nez Perce	7/1/01	7/1/01	10/3/02
52	2400117	Al Ralstin Farm	2059 Younger Road	ID	Nez Perce	10/11/03	10/16/03	9/28/06
53	2400119	Valley Aviation	320 130th St.	ID	Nez Perce	5/5/05	5/5/05	7/9/07
54	3300001	Seven Feathers Truck & Travel Center	130 Creekside Dr.	OR	Cow Creek	2/12/02	2/13/02	3/10/03
55	3600001	Arrowhead Truck Plaza	72485 Hwy. 331	OR	Umatilla	6/10/99	3/1/01	1/8/03
56	3600010	Mission Market	Mission Rd. & Hwy. 331	OR	Umatilla	4/9/99	7/15/99	8/9/99
57	3600013	Fowler Ranch	727 Fowler Lane	OR	Umatilla	12/30/05	1/3/06	2/14/06
58	3600014	Bonbright Truck Shop	72567 Hwy. 331	OR	Umatilla	11/17/07	11/19/07	2/21/08
59	3700002	DMJ Automotive	2204 Hollywood Blvd.	OR	Warm Springs	4/26/88	5/27/88	2/13/97
60	3700003	Warm Springs Forest Products, Inc.	Hwy. 26	OR	Warm Springs	7/11/90	8/18/90	10/17/90
61	3700004	Warm Springs Elementary	1114 Wasco St.	OR	Warm Springs	6/26/91	6/26/91	7/22/94
62	3700008	Former BIA Roads Dept.	N Hollywood St.	OR	Warm Springs	10/18/89	10/19/89	10/19/89
63	3700013	Macy's Market	P.O. Box 490	OR	Warm Springs	5/25/93	7/14/93	7/22/93
64	4020002	Colville Tribal Logging	School Loop Rd.	WA	Colville	11/16/93	4/24/94	10/27/97
65	4020005	BIA Branch of Forestry (Mitchell Point)	Silver Creek Rd.	WA	Colville	10/28/97	10/28/97	10/28/97
66	4020006	BIA Branch of Forestry (Inchelium)	Hall Creek Rd., 3 Mi. N. of Inchelium	WA	Colville	5/12/93	5/24/93	10/28/97
67	4020008	BIA Branch of Roads (Agency Campus)	Agency Campus	WA	Colville	11/16/93	11/16/93	7/20/98
68	4020009	BIA Branch of Roads (Keller)	State Hwy. 21	WA	Colville	2/10/94	11/1/94	10/28/97
69	4020014	Whitelaw Logging	11th & E St.	WA	Colville	6/9/94	6/9/94	10/19/94
70	4020026	Reservation Orchard Shop	590 Jack Wells Rd.	WA	Colville	6/24/91	3/21/95	1/26/00
71	4020030	Jackpot Station #084 (Exxon Food Mart)	414 Hanford St., P.O. Box 3809	WA	Colville	10/2/96	10/2/96	1/26/00
72	4020032	Grand Coulee Dam School District	901 River Dr.	WA	Colville	3/18/93	6/22/94	1/20/97
73	4020033	Coulee Express	200 Roosevelt Way	WA	Colville	9/17/92	9/28/92	5/1/94
74	4020034	Rainbow Beach Resort	HC1 Box 146 N Twin Lake	WA	Colville	11/16/93	1/18/94	10/28/97
75	4020044	Apple Processing & Cold Storage	Columbia St. btwn. 2nd & 3rd	WA	Colville	4/1/90	1/24/92	1/24/92
76	4020058	Okanogan County Dept. of Public Works	269 Railroad Ave.	WA	Colville	5/16/94	5/16/94	7/26/01
77	4070002	Lummi Indian Business Council	2616 Kwina Rd.	WA	Lummi	12/12/96	12/12/96	12/3/02
78	4070003	Fishermans Cove, Inc.	2557 Lummi View Dr.	WA	Lummi	7/24/95	7/24/95	9/25/01
79	4070006	Fisherman's Cove Mini Mart	2557 Lummi View Dr.	WA	Lummi	6/5/08	6/6/08	10/23/08
80	4080009	USCG - Neah Bay	USCG Station Neah Bay	WA	Makah	4/20/93	4/20/93	9/21/98
81	4080011	Thunderbird Resort	13321 Bayview Ave.	WA	Makah	1/24/01	2/13/01	8/10/01
82	4080012	Makah National Fish Hatchery	Fish Hatchery Rd.	WA	Makah	9/2/93	9/3/93	8/6/96
83	4090002	ARCO Facility #6093	2790 Auburn Way S.	WA	Muckleshoot	1/29/90	1/29/90	11/30/94
84	4090003	Circle K #1477 (Muckleshoot Market & Deli)	2802 Auburn Way S.	WA	Muckleshoot	3/13/90	3/15/90	5/12/94
85	4090003	Circle K #1477 (Muckleshoot Market & Deli)	2802 Auburn Way S.	WA	Muckleshoot	1/23/95	1/23/95	7/7/95

EPA Region 10 Indian Lands Closed LUST Sites (as of 1/28/09)

Facility ID	Facility Name	Address	City	State	Tribes	Confirmed Release	Cleanup Initiated	Cleanup Completed
86	4090004 FAA - Seattle Air Route Traffic Control Center	3101 Auburn Way S.	Auburn	WA	Muckleshoot	10/29/92	10/29/92	3/24/93
87	4090006 Coal Creek Pump Station	2108 Howard Rd.	Auburn	WA	Muckleshoot	10/13/98	10/13/98	7/29/02
88	4110001 Nooksack River Chevron (Nooksack Market Centre)	5047 Mt. Baker Hwy.	Deming	WA	Nooksack	9/8/92	1/15/93	6/26/01
89	4120001 Klallam Smoke Shop	7950 Little Boston Rd. NE	Kingston	WA	Port Gamble S'Klallam	12/1/98	12/1/98	12/1/98
90	4120001 Gliding Eagle Market Place	7950 Little Boston Rd. NE	Kingston	WA	Port Gamble S'Klallam	7/15/03	7/15/03	10/21/03
91	4150004 BIA Cook Creek Roads Shop	1 Mile 4 MOCUPS - Olympic Hwy.	Neilton	WA	Quinalt	10/6/93	10/6/93	12/22/99
92	4150009 U.S. Fish & Wildlife Service	Quinalt National Fish Hatchery	Humptulips	WA	Quinalt	11/1/91	5/19/92	10/30/97
93	4150018 WDOT - Amanda Park Maintenance Site	Hwy. 101, MP 128.2, West Side	Amanda Park	WA	Quinalt	5/9/95	5/9/95	10/20/97
94	4180001 Hood Canal School District #404	N. 111 Hwy. 106	Shelton	WA	Skokomish	8/24/90	8/24/90	9/21/98
95	4180001 Hood Canal School District #404	N. 111 Hwy. 106	Shelton	WA	Skokomish	4/4/06	4/4/06	10/30/06
96	4180004 Pottlatch Jackpot	N. 19300 Hwy. 101	Shelton	WA	Skokomish	3/31/92	8/10/92	2/7/00
97	4190003 Western Nuclear, Inc.	Sherwood Project	Wellpinit	WA	Spokane	9/17/91	9/20/93	1/20/99
98	4190004 BIA Fire Management Control Center	Fire Management Complex	Wellpinit	WA	Spokane	7/1/91	4/12/94	3/20/98
99	4190005 BIA Spokane Agency Roads Dept.	Bldg. 1014	Wellpinit	WA	Spokane	5/1/90	10/15/93	3/20/98
100	4190006 Speelya Fast Stop	6144 Ford Wellpinit Rd.	Wellpinit	WA	Spokane	5/21/93	5/21/93	4/29/98
101	4200001 Squaxin Tribe - Motor Pool	W 81 Hwy. 108	Shelton	WA	Squaxin Island	4/10/95	4/10/95	2/3/99
102	4220004 Masi Shop	16281 Hwy. 305	Suquamish	WA	Suquamish	3/29/91	3/29/91	6/8/00
103	4240003 Boeing Test Site (first release)	11224 344th NE	Marysville	WA	Tulalip	11/2/90	11/2/90	1/15/92
104	4240003 Boeing Test Site (second release)	11224 344th St. NE	Marysville	WA	Tulalip	10/21/98	10/21/98	9/23/04
105	4240008 Easterbrooks Unocal (Marine Drive 76)	3323 Marine Dr. NE	Marysville	WA	Tulalip	2/16/96	2/16/96	10/20/97
106	4240008 Marine Drive 76	3323 Marine Dr. NE	Marysville	WA	Tulalip	9/19/05	11/1/05	10/23/08
107	4240009 Tulalip Marina	7411 Tulalip Bay Dr.	Marysville	WA	Tulalip	1/11/00	1/11/00	1/18/00
108	4240013 Texaco Refining & Marketing, Inc.	3320 62nd St. NE	Marysville	WA	Tulalip	6/25/92	6/25/92	6/25/92
109	4260001 Kiles Corner	2421 W. Wapato Rd.	Wapato	WA	Yakama	5/6/93	5/6/93	7/21/03
110	4260003 Sanofi Bio-Industries (Pace International LP)	5661 Branch Rd.	Wapato	WA	Yakama	6/1/91	1/1/95	1/17/03
111	4260004 Latum Creek Ranches, Inc.	320 Stephenson Rd.	Wapato	WA	Yakama	4/13/95	4/13/95	10/20/97
112	4260008 Fort Simcoe Job Center	40 Abella Ln.	White Swan	WA	Yakama	9/17/91	9/17/91	9/15/97
113	4260009 Serv Um Self	610 W. First Ave.	Toppenish	WA	Yakama	12/20/91	3/8/99	1/20/06
114	4260009 Serv Um Self (second release)	610 W. First Ave.	Toppenish	WA	Yakama	11/16/06	11/16/06	5/31/07
115	4260011 L.O. Gannon & Sons	Hwy. 22 and Boundary Rd.	Mabton	WA	Yakama	11/28/90	11/28/90	8/1/91
116	4260015 Toppenish Public Works Shops	21 W 1st Ave. N	Toppenish	WA	Yakama	4/5/94	4/5/94	4/29/98
117	4260024 General Store	505 W. First Ave.	Toppenish	WA	Yakama	7/15/92	7/15/92	9/23/04
118	4260039 Intervalley Hardware	3 Fort Rd.	Toppenish	WA	Yakama	6/12/92	5/27/93	7/31/97
119	4260040 Jackpot Grocery & Deli (Time Oil Co. #01-063)	618 E. Toppenish Ave.	Toppenish	WA	Yakama	10/31/01	2/19/02	2/14/06
120	4260045 White Swan Trading Post	180 Birch Ave.	White Swan	WA	Yakama	3/1/94	3/1/94	5/5/02
121	4260046 Yakima Co. Public Works - Branch Pit	Branch Rd.	Wapato	WA	Yakama	1/16/90	1/16/90	3/1/90
122	4260052 Old Husky Station (Top Mart Chevron)	907 W 1st Ave.	Toppenish	WA	Yakama	2/14/97	8/14/97	10/23/97
123	4260060 Toppenish Bus Garage	405 Asotin Ave.	Toppenish	WA	Yakama	10/9/90	10/9/90	2/1/08
124	4260061 Green Valley Implement Co.	61581 Hwy. 97	Toppenish	WA	Yakama	12/5/94	12/5/94	5/5/03
125	4260063 PureGro Co. DBA Brea AG Service	310 1/2 Washington Ave.	Toppenish	WA	Yakama	6/25/91	6/25/91	10/20/97
126	4260064 Jack S. Thorington	3280 S. McKinley Rd.	Toppenish	WA	Yakama	6/3/93	6/3/93	11/6/01
127	4260067 Mt. Adams School District #209	621 Signal Peak Rd.	White Swan	WA	Yakama	2/5/93	2/5/93	11/3/93
128	4260068 Harrah Elementary School	3851 Harrah Rd.	Harrah	WA	Yakama	3/7/90	3/7/90	11/22/93
129	4260073 AT&T Atanum Microwave Relay Station	Ahtanum Ridge S of Wiley Rd.	Yakima	WA	Yakama	8/18/93	8/18/93	8/15/96
130	4260080 BIA Wapato Irrigation Project	413 South Camas Ave.	Wapato	WA	Yakama	10/17/00	10/17/01	3/29/02

EPA Region 10 Indian Lands Closed LUST Sites (as of 1/28/09)

	Facility ID	Facility Name	Address	City	State	Tribes	Confirmed Release	Cleanup Initiated	Cleanup Completed
131	4260082	Yakama Nation Transportation Program - White Swan Road Shop	381 Elm Ave.	White Swan	WA	Yakama	8/19/97	8/19/97	11/15/06
132	4260085	Roadrunner Deli Mart	705 W 1st	Wapato	WA	Yakama	3/12/96	3/19/96	2/14/97
133	4260086	Old Riley Kelly Oil Station (Pacific Pride / Road Runner)	61313 Hwy. 97 S.	Toppenish	WA	Yakama	8/16/94	8/16/94	11/6/01
134	4260089	Mike's Automotive	291 Curtis St.	White Swan	WA	Yakama	8/30/01	3/20/02	5/5/03
135	4260093	Alamo Service	202 W 1st St.	Wapato	WA	Yakama	6/4/92	6/4/92	4/16/93
136	4260094	7-11 #25128 (formerly Southland)	611 W. First Ave.	Toppenish	WA	Yakama	10/8/98	7/23/02	7/23/02
137	4260096	Yakama Indian Nation Fisheries Bldg.	2 Buena Way	Toppenish	WA	Yakama	3/22/91	3/22/91	4/1/91
138	4260101	Antique Station	111 Fort Rd.	Toppenish	WA	Yakama	1/27/92	2/13/93	4/17/07
139	4260102	Wapato School District Bus Garage	S. Wasco & Forth Ave.	Wapato	WA	Yakama	8/7/98	8/10/98	1/17/03
140	4260103	WA State Military Dept. (Toppenish Armory)	326 Division St.	Toppenish	WA	Yakama	5/20/92	5/20/92	5/15/96
141	4260106	Klickitat County Shop	E Main & NW Division St.	Glenwood	WA	Yakama	9/17/91	9/17/91	5/25/93
142	4260107	WA Dept. of Natural Resources	Corner of Court & N 2nd St.	Glenwood	WA	Yakama	9/25/92	9/25/92	11/4/97
143	4260111	Wapato Fruit & Cold Storage Co., Inc.	4440 Track Rd.	Wapato	WA	Yakama	8/14/91	8/14/91	10/20/97
144	4260112	WADOT Toppenish Maintenance Shed	231 Fort Rd.	Toppenish	WA	Yakama	9/6/90	10/12/90	10/9/03
145	4260114	Logan Feed, Inc.	N. Wasco Ave. & Siltcum Ave.	Wapato	WA	Yakama	4/14/93	6/4/93	5/23/97
146	4260116	Wapato Shell Station	631 W. 1st St.	Wapato	WA	Yakama	2/22/95	2/22/95	11/6/01
147	4260122	Yakima Valley Farm Workers Clinic	601 W. 1st Ave.	Toppenish	WA	Yakama	3/31/97	3/31/97	4/29/98
148	4260124	Kanzler Farm	2581 Harrah Rd.	Harrah	WA	Yakama	11/2/93	8/10/94	2/27/95

EPA Region 10 Report: List of Regulated Handlers, Sorted By Location Zip Code and Handler Name

State of Washington

Number of regulated handlers: 2866

Zip Code	Handler Name	Handler ID	Location Address	City	TSD	Gen Type	Transporter	Used Oil
Number of regulated handlers: 8								
99201	BARTON COLLISION CENTER	WAH000013425	119 S JEFFERSON	SPOKANE	no	CEG	no	no
	COSCO MARKING INC	WA0000100297	215 W 2ND AVE	SPOKANE	no	CEG	no	no
	COWLES PUBLISHING CO SPOKANE	WAD000066879	N 50 MADISON	SPOKANE	no	CEG	no	no
	S & S ENGINE REMANUFACTURING	WAD0029131125	1023 N MONROE ST	SPOKANE	no	CEG	no	no
	SATURN OF SPOKANE 1002	WAD0027496983	1002 W 2ND AVE	SPOKANE	no	CEG	no	no
	SHERWIN WILLIAMS SPOKANE	WAD001718972	W 420 BOONE AVE	SPOKANE	no	SQG	no	no
	SPOKANE CITY NORMANDIE	WAD988484325	N 1410 NORMANDIE	SPOKANE	no	CEG	no	no
	SPOKANE TRANSIT AUTHORITY	WAD981763733	1229 W BOONE AVE	SPOKANE	no	CEG	no	no
Number of regulated handlers: 32								
99202	ATLAS MINE & MILL SUPPLY INC	WAR000011502	1115 N HAVANA ST	SPOKANE	no	CEG	no	no
	BECKER BUICK BODY SHOP	WAD981772056	634 E 1ST AVE	SPOKANE	no	CEG	no	no
	BURLINGAME STEEL INC	WAD000031284	4240 E ALKI AVE	SPOKANE	no	SQG	no	no
	EVERGREEN PHARMACEUTICAL LLC	WAH000037470	350 E 3RD AVE	SPOKANE	no	CEG	no	no
	EWU RIVER POINT DENTAL HYGIENE	WAH000030608	HSB 160 310 N RIVER POINT BLVD	SPOKANE	no	CEG	no	no
	FEDEX EXPRESS GEGA	WAD988474730	515 N HAVANA ST	SPOKANE	no	CEG	no	no
	FEDEX FREIGHT INC SPOKANE	WAD988484499	4220 E BROADWAY AVE	SPOKANE	no	SQG	no	no
	FLEET PAINTING	WAD102864188	3105 E ALKI	SPOKANE	no	SQG	no	no
	FLUID DESIGN PRODUCTS INC	WAH000024987	3511 E RIVERSIDE	SPOKANE	no	CEG	no	no
	GARCO CONSTRUCTION INC	WAR000004887	4114 E BROADWAY AVE	SPOKANE	no	CEG	no	no
	GREAT NORTHERN SPOKANE LLC	WAH000036058	802 E SPOKANE FALLS BLVD	SPOKANE	no	SQG	no	no
	KMART 4147	WAD988497996	4110 E SPRAGUE AVE	SPOKANE	no	CEG	no	no
	MARKET EQUIPMENT CO INC	WAD0027511484	1114 N RUBY	SPOKANE	no	CEG	no	no
	MILLER PAINT CO INC SPOKANE 3RD ST	WAH000037946	7 E 3RD ST	SPOKANE	no	CEG	no	no
	NEWMAX INC DBA METALITE INDUSTRIES	WAH000043126	4102 E BOONE AVE	SPOKANE	no	LQG	no	no
	OIL ANALYSIS LAB	WAD988491031	1514 E SPRAGUE AVE	SPOKANE	no	SQG	no	no
	OIL ANALYSIS LAB INC	WAH000037385	2121 E RIVERSIDE AVE	SPOKANE	no	SQG	no	no
	OIL ANALYSIS LAB INC LEE ST N	WAH000036286	N 121 LEE ST	SPOKANE	no	CEG	no	no
	PEPSI BOTTLING GROUP SPOKANE	WAH000036008	19 N RALPH AVE	SPOKANE	no	CEG	no	no
	PRECISION FRAME & COLLISION	WAD0027497379	1827 E TRENT AVE	SPOKANE	no	CEG	no	no
	QWEST CORPORATION W00191	WAR000009209	E 1020 CATALDO	SPOKANE	no	CEG	no	no
	RIVER CITY BODY & PAINT	WAH000073056	34 E MAIN AVE	SPOKANE	no	CEG	no	no
	S&S ADVANCED METAL TECHNOLOGIES LLC	WAH000037303	3200 E TRENT AVE BLDG 1 STE A	SPOKANE	no	LQG	no	no
	SCOLLARDS CLEANERS HATCH ST	WAR000000331	S 223 HATCH ST	SPOKANE	no	SQG	no	no
	SHERWIN WILLIAMS 8258	WAH000035806	3200 E TRENT AVE BLDG 2S	SPOKANE	no	CEG	no	no
	SHERWIN WILLIAMS AUTOMOTIVE	WAD988468823	E 3625 SPRINGFIELD	SPOKANE	no	CEG	no	no
	SPOKANE METAL FINISHING	WA0000113803	1519 E TRENT AVE	SPOKANE	no	CEG	no	no

generator type designators

LQG - large quantity generator ; SQG - small quantity generator ; CEG - conditionally exempt small quantity generator

v5

EPA Region 10 Report: List of Regulated Handlers, Sorted By Location Zip Code and Handler Name

State of Washington

Number of regulated handlers: 2866

Zip code: 99202									
Number of regulated handlers: 32									
Handler Name	Handler ID	Location Address	City	TSD	Gen Type	Transporter	Used Oil		
TRIPLE PLATE CHROME	WAH000011528	2302 TRENT AVE	SPOKANE	no	LQG	no	no		
U SAVE CLEANERS	WAH000007849	918 N DIVISION	SPOKANE	no	SQG	no	no		
WA WSU INSTITUTE OF SHOCK PHYSICS	WAH000031444	120 N PINE	SPOKANE	no	CEG	no	no		
WA WSU SPOKANE RIVERPOINT CAMPUS	WAH000010553	668 N RIVERPOINT BLVD	SPOKANE	no	CEG	no	no		
DOWNTOWN AUTOMOTIVE SPECIALIST	WAD988507927	430 E SPRAGUE AVE	SPOKANE	no	none	no	yes		
Zip code: 99203									
Number of regulated handlers: 3									
Handler Name	Handler ID	Location Address	City	TSD	Gen Type	Transporter	Used Oil		
ALBERTSONS 240	WAH000032642	E 510 37TH AVE	SPOKANE	no	CEG	no	no		
DIVINE CORP 38TH 02	WAD988506416	3725 S GRAND BLVD	SPOKANE	no	CEG	no	no		
RITE AID #5303	WAH000040122	810 E 29TH AVE	SPOKANE	no	CEG	no	no		
Zip code: 99204									
Number of regulated handlers: 8									
Handler Name	Handler ID	Location Address	City	TSD	Gen Type	Transporter	Used Oil		
DEACONESS HOSPITAL	WAD153812797	800 W 5TH AVE	SPOKANE	no	CEG	no	no		
DIVINE CORP 3RD 23	WAD988506440	W 203 3RD AVE	SPOKANE	no	CEG	no	no		
PATHOLOGY ASSOC MEDICAL LABORATORIES	WAH000010561	44 W 6TH AVE	SPOKANE	no	SQG	no	no		
PATHOLOGY ASSOCIATES MEDICAL LABORATORIE	WAD088721477	110 W CLIFF DR	SPOKANE	no	SQG	no	no		
SACRED HEART MEDICAL CENTER	WAD067545798	101 W 8TH AVE	SPOKANE	no	SQG	no	no		
SHRINERS HOSPITALS FOR CHILDREN	WAH000035897	911 W 5TH AVE	SPOKANE	no	CEG	no	no		
SPOKANE INTERNATIONAL AIRPORT	WAD058614496	8008 W AVIATION AVE	SPOKANE	no	SQG	no	no		
TRIUMPH COMPOSITE SYSTEMS INC	WAD982657900	1514 S FLINT RD	SPOKANE	no	LQG	no	no		
Zip code: 99205									
Number of regulated handlers: 5									
Handler Name	Handler ID	Location Address	City	TSD	Gen Type	Transporter	Used Oil		
CUSTOM BODY CO	WAD027501162	3104 N MONROE ST	SPOKANE	no	CEG	no	no		
RITE AID #5304	WAH000040138	2215 A W WELLESLEY AVE	SPOKANE	no	CEG	no	no		
SPOKANE CITY ADV WASTEWATER TREATMENT	WAD000875450	4401 N AUBREY L WHITE PKWY	SPOKANE	no	SQG	no	no		
US VETERANS AFFAIRS DEPT MEDICAL CENTER	WA5360000090	4815 N ASSEMBLY ST	SPOKANE	no	CEG	no	no		
WAL MART 2865	WAH000011098	2301 W WELLESLEY AVE	SPOKANE	no	SQG	no	no		
Zip code: 99206									
Number of regulated handlers: 17									
Handler Name	Handler ID	Location Address	City	TSD	Gen Type	Transporter	Used Oil		
ALBERTSONS 0258	WAH000025114	13606 E 32ND AVE	SPOKANE	no	LQG	no	no		
ANA LABORATORIES	WAD981761638	9922 E MONTGOMERY UNIT 10	SPOKANE	no	SQG	no	no		
APPLEWAY GROUP BODY SHOP	WAD981768286	E 10000 1/2 SPRAGUE	SPOKANE	no	none	no	no		
AW CHESTERTON SPOKANE DIST SITE	WAR000005363	9514 E MONTGOMERY BAY 29	SPOKANE	no	CEG	no	no		
CAREFUL CLEANERS	WAD118969633	1014 N PINES RD	SPOKANE	no	CEG	no	no		
CITY EAST AUTO BODY CTR	WAD981768112	2512 N WOODRUFF RD	SPOKANE	no	CEG	no	no		
CONOCOPHILLIPS CO PARKWATER TERMINAL	WAD000801001	6317 E SHARP AVE	SPOKANE	no	LQG	no	no		

generator type designators

LQG - large quantity generator ; SQG - conditionally exempt small quantity generator

EPA Region 10 Report: List of Regulated Handlers, Sorted By Location Zip Code and Handler Name

State of Washington

Number of regulated handlers: 2866

Zip code: 99206							Number of regulated handlers: 17						
Handler Name	Handler ID	Location Address	City	TSD	Gen Type	Transporter	Used Oil						
DIVINE CORP PINES 10	WAD988506408	N 1520 PINES	SPOKANE	no	CEG	no	no						
MACKAY MANUFACTURING INC	WAR000008706	10011 E MONTGOMERY AVE	SPOKANE	no	CEG	no	no						
NOVATION INC	WAD988493722	2616 N LOCUST RD	SPOKANE	no	LQG	no	no						
OIL RE REFINING COMPANY INC SPOKANE	WAH000011585	11916 EMPIRE AVE	SPOKANE	no	none	no	yes						
OPPORTUNITY BODY SHOP INC	WAD9882657140	106 N BOWDISH RD	SPOKANE	no	CEG	no	no						
RITE AID #5305	WAH000040140	12222 E SPRAGUE AVE	SPOKANE VALLEY	no	CEG	no	no						
ROAD PRODUCTS INC	WAH000025160	12301 E EMPIRE AVE LOT 5	SPOKANE	no	CEG	no	no						
SUNSHINE DISPOSAL INC	WAD980834261	2405 N UNIVERSITY	SPOKANE	no	CEG	no	no						
TESTAMERICA	WAH000034430	11922 E 1ST AVE	SPOKANE VALLEY	no	CEG	no	no						
WILSON TOOL MFG	WAD988497673	10025 E MONTGOMERY AVE	SPOKANE	no	CEG	no	no						

Zip code: 99207							Number of regulated handlers: 16						
Handler Name	Handler ID	Location Address	City	TSD	Gen Type	Transporter	Used Oil						
DIVINE CORP WELLESLEY 05	WAD988506424	925 E WELLESLEY AVE	SPOKANE	no	CEG	no	no						
EDS PREMIER AUTO BODY	WAD988514188	2707 E FRANCIS AVE	SPOKANE	no	CEG	yes	no						
GONZAGA PREPARATORY SCHOOL	WAD010197044	1224 E EUCLID AVE	SPOKANE	no	CEG	yes	no						
HI REL LABORATORIES INC N FREYA	WAH000001982	6116 N FREYA ST	SPOKANE	no	CEG	no	no						
HOLLISTER-STIER LABORATORIES LLC	WAD086247491	3525 N REGAL ST	SPOKANE	no	LQG	no	no						
NIOSH SPOKANE RESEARCH LAB	WA6141500094	315 E MONTGOMERY AVE	SPOKANE	no	CEG	no	no						
NORCAN	WAD988486841	9423 N MARKET ST	SPOKANE	no	CEG	no	no						
SAFEMAY SPOKANE TRUCK STOP	WAD119497394	N 5707 FREYA ST TRUCK STOP	SPOKANE	no	CEG	no	no						
SIGNATURE GENOMIC LABORATORIES LLC	WAR000010058	2820 N ASTOR ST	SPOKANE	no	CEG	no	no						
SONDEREN PACKAGING	WAD988503322	2906 N CRESTLINE ST	SPOKANE	no	SQG	no	no						
SPOKANE CITY FOOTHILLS	WAD988484333	E 914 N FOOTHILLS DR	SPOKANE	no	CEG	no	no						
SPOKANE PUBLIC SCHOOL DIST 81	WAD980976518	2815 E GARLAND AVE	SPOKANE	no	SQG	no	no						
SWI SAFEMAY WHSE SPOKANE	WAD988482493	N 5707 FREYA WHSE	SPOKANE	no	CEG	no	no						
USARMY RESERVE CENTER MANN HALL	WAH000020156	4415 N MARKET ST	SPOKANE	no	CEG	no	no						
WA DOT EASTERN REGION MAYFAIR	WAD980724371	2714 N MAYFAIR ST	SPOKANE	no	CEG	no	no						
DICKS PAINTING INC	WAH000004986	2803 N MARTIN	SPOKANE	no	CEG	no	no						

Zip code: 99208							Number of regulated handlers: 5						
Handler Name	Handler ID	Location Address	City	TSD	Gen Type	Transporter	Used Oil						
ALBERTSONS 206	WAH000032671	9001 N INDIAN TRAIL RD	SPOKANE	no	CEG	no	no						
ALBERTSONS 265	WAH000030446	6520 N NEVADA	SPOKANE	no	CEG	no	no						
LOWES HIW 206	WAR000001032	6902 N DIVISION ST	SPOKANE	no	CEG	no	no						
RITE AID #5311	WAH000039815	12420 N DIVISION	SPOKANE	no	CEG	no	no						
RITE AID #6553	WAH000039942	9007 N INDIAN TRAIL RD	SPOKANE	no	CEG	no	no						

Zip code: 99211							Number of regulated handlers: 2						
Handler Name	Handler ID	Location Address	City	TSD	Gen Type	Transporter	Used Oil						
CONOCOPHILLIPS CO NORTH SPOKANE TERMINAL	WAD070967245	6520 N FREYA ST	SPOKANE	no	LQG	no	no						

generator type designators

LQG - large quantity generator ; SQG - conditionally exempt small quantity generator

EPA Region 10 Report: List of Regulated Handlers, Sorted By Location Zip Code and Handler Name

State of Washington

Number of regulated handlers: 2866

Zip code: 99211		Number of regulated handlers: 2					
Handler Name	Handler ID	Location Address	City	TSD	Gen Type	Transporter	Used Oil
KIM HOTSTART MFG CO	WAD009062332	E 5723 ALKI AVE	SPOKANE	no	CEG	no	no

Zip code: 99212		Number of regulated handlers: 28					
Handler Name	Handler ID	Location Address	City	TSD	Gen Type	Transporter	Used Oil
ACME MACHINE WORKS	WAD988511101	1220 N BRADLEY RD	SPOKANE	no	CEG	no	no
ALBERTSONS 246	WAH000032656	8851 E TRENT AVE	MILLWOOD	no	CEG	no	no
AVISTA CORP DOLLAR RD	WAR000004994	2406 N DOLLAR RD	SPOKANE	no	CEG	no	no
BNSF RAILWAY COMPANY SPOKANE	WAD980835425	5302 E TRENT AVE	SPOKANE	no	CEG	no	no
BRENTAG PACIFIC INC	WAD056053820	1402 N THIERMAN RD	SPOKANE	yes	LQG	no	no
CENTRAL PRE MIX CONCRETE PARK RD	WAD051170413	N 302 PARK RD	SPOKANE	no	CEG	no	no
CENTRAL PRE MIX PRESTRESS CO	WAD009060906	922 N CARNAHAN RD	SPOKANE	no	CEG	no	no
COMMUNITY COLLEGES OF SPOKANE FELT'S FIEL	WA0000016188	E 5317 RUTTER AVE	SPOKANE	no	CEG	no	no
COMSTOR INFORMATION MANAGEMENT	WAD988515581	2219 N DICKEY ST	SPOKANE	no	CEG	no	no
EXXON MOBIL SPOKANE TERMINAL	WAD000641779	6311 E SHARP AVE	SPOKANE	no	CEG	no	no
FABRICATION & TRUCK EQUIPMENT INC	WAD988476677	E 5301 BROADWAY AVE	SPOKANE	no	CEG	no	no
GRAHAM CONSTRUCTION & MANAGEMENT INC	WA0000113787	331 N FANCHER RD SHEA	SPOKANE	no	CEG	no	no
HOME DEPOT 4714	WAH000012682	5101 E SPRAGUE AVE	SPOKANE	no	SQG	no	no
INLAND BATTERY SOLUTIONS LLC DBA INTERST	WAH000037738	5417 E TRENT AVE	SPOKANE	no	none	no	no
INLAND EMPIRE PAPER	WAD009069279	3320 N ARGONNE RD	SPOKANE	no	CEG	no	no
INLAND EMPIRE PLATING EASTERN RD	WAD009063827	N 2401 EASTERN RD	SPOKANE	no	SQG	no	no
INTERMOUNTAIN FABRICATORS INC	WAD988513644	6014 E KNOX AVE	SPOKANE	no	CEG	no	no
JAREMKO BODY SHOP	WAR000007070	6909 E SPRAGUE AVE	SPOKANE	no	CEG	no	no
JAREMKO NISSAN INC	WAD089339964	6901 E SPRAGUE AVE	SPOKANE	no	CEG	no	no
NORTHWEST SANDBLAST & PAINT LLC	WAD988501656	5916 E BALDWIN	SPOKANE	no	CEG	no	no
PENSKE TRUCK LEASING CO LP MALLON	WAH000009720	6223 E MALLON	SPOKANE	no	CEG	no	no
RITE AID #5309	WAH000039971	1443 N ARGONNE RD	SPOKANE VALLEY	no	CEG	no	no
UNITED PARCEL SERVICE SPOKANE	WAD981761612	1016 N BRADLEY RD	SPOKANE	no	LQG	no	no
UNIVAR USA INC	WAD009236811	4515 WISCONSIN AVE E	SPOKANE	yes	CEG	yes	no
VILLELLI ENTERPRISES INC	WAH000011890	225 N ELLA RD	SPOKANE	no	LQG	no	no
WESTERN FRUIT EXPRESS	WAH000033393	5310 E TRENT BLDG 1	SPOKANE	no	CEG	no	no
LES SCHWAB	WA0000016014	6320 E ALKI AVE	SPOKANE	no	none	no	no
EMERALD SERVICES INC SPOKANE VALLEY	WAH000042987	6308 E SHARP AVE	SPOKANE VALLEY	no	CEG	no	no

Zip code: 99214		Number of regulated handlers: 1					
Handler Name	Handler ID	Location Address	City	TSD	Gen Type	Transporter	Used Oil
KEY TRONIC EMS	WA0000275404	4424 N SULLIVAN RD	SPOKANE	no	CEG	no	no

Zip code: 99216		Number of regulated handlers: 27					
Handler Name	Handler ID	Location Address	City	TSD	Gen Type	Transporter	Used Oil
APEX INDUSTRIES INC	WA0000149203	3808 N SULLIVAN RD BLDG 14 NW	SPOKANE VALLEY	no	CEG	no	no
BULK SERVICE TRANSPORT INC SPOKANE	WAD117356386	16702 E EUCLID AVE	SPOKANE	no	none	yes	yes

generator type designators

LQG - large quantity generator ; SQG - small quantity generator ; CEG - conditionally exempt small quantity generator

EPA Region 10 Report: List of Regulated Handlers, Sorted By Location Zip Code and Handler Name

State of Washington

Number of regulated handlers: 2866

Number of regulated handlers: 27						
Zip code: 99216	Handler Name	Handler ID	Location Address	City	TSD	Used Oil
	CENTRAL PRE MIX SULLIVAN RD	WAD988488235	N 1900 SULLIVAN RD	SPOKANE	no	no
	EMERALD PETROLEUM SERVICES TRANSFER FACI	WAH000012161	3808 N SULLIVAN RD BLDG 5	SPOKANE	no	yes
	EMERALD SERVICES INC SPOKANE	WAH000033156	3808 N SULLIVAN RD BLDG 11 STE	SPOKANE	no	yes
	FIBERGLASS TECHNOLOGY INDUSTRIES	WAD980976450	3808 N SULLIVAN RD BLDG 31	SPOKANE	no	no
	HONEYWELL ELECTRONIC MATERIALS INC	WAD000064642	15128 E EUCLID AVE	SPOKANE	yes	no
	INCYTE PATHOLOGY P S	WAH000027361	13103 E MANSFIELD AVE	SPOKANE VALLEY	no	no
	JACO ENVIRONMENTAL INC SPOKANE VALLEY	WAH000039381	3808 N SULLIVAN RD BLDG 12 ST	SPOKANE VALLEY	no	no
	JACO ENVIRONMENTAL SPOKANE	WAH000033224	3808 N SULLIVAN RD BLDG 12 ST	SPOKANE	no	no
	KAISER ALUMINUM WASHINGTON	WAD009067281	15000 E EUCLID AVE	SPOKANE	yes	yes
	KAISER ALUMINUM WASHINGTON	WAH000025850	3401 N TSCHIRLEY	SPOKANE	no	no
	KEMIRA WATER SOLUTIONS INC	WAD085804375	2315 N SULLIVAN RD	SPOKANE	no	no
	KEY TRONIC CORP SPOKANE INDUSTRIAL PARK	WAD048440424	3808 N SULLIVAN RD BLDG 17	SPOKANE	yes	no
	LLOYD INDUSTRIES	WAH000025974	3808 N SULLIVAN RD BLDG 25E	SPOKANE	no	no
	NA DEGERSTROM INC	WAD008811960	3303 N SULLIVAN RD	SPOKANE	no	no
	SAFETY KLEEN SYSTEMS 3808 N SULLIVAN	WAH000015883	3808 N SULLIVAN RD BLDG 31 TRA	SPOKANE	no	no
	SAFETY KLEEN SYSTEMS INC NEW BLDG	WAH000025242	3808 N SULLIVAN RD BLDG 12 STE	SPOKANE	no	yes
	SERVATRON INC	WAH000012260	15520 FAIRVIEW AVE	SPOKANE	no	no
	SPOKANE INDUSTRIES	WAD009069717	3808 N SULLIVAN RD BLDG 1	SPOKANE	no	no
	STERLING INTERNATIONAL INC	WAH000001677	3808 N SULLIVAN RD BLDG 16	SPOKANE	no	no
	TARGET STORE 0915	WAH0000027912	13724 E SPRAGUE AVE	SPOKANE	no	no
	US ARMY RESERVE CENTER SPOKANE	WA4210400129	3830 N SULLIVAN RD	SPOKANE	no	no
	US WAX & POLYMER INC	WAH000031432	17625 E EUCLID AVE	SPOKANE	no	no
	VALLEY HOSPITAL	WAH000034500	12606 E MISSION AVE	SPOKANE VALLEY	no	no
	WAGSTAFF INC	WAD009065145	3910 N FLORA RD	SPOKANE	no	no
	WALMART REAL ESTATE BUSINESS TRUST	WAH000039617	5025 E SPRAGUE AVE	SPOKANE VALLEY	no	no

Number of regulated handlers: 8						
Zip code: 99217	Handler Name	Handler ID	Location Address	City	TSD	Used Oil
	ABLE CLEAN UP TECH INC	WAH000019166	4117 E NEBRASKA AVE TRANSFER F	SPOKANE	no	yes
	ABLE CLEAN UP TECHNOLOGIES INC	WAH000018838	4117 E NEBRASKA	SPOKANE	no	yes
	BROOKLYN IRON WORKS INC	WAH000021382	2401 E BROOKLYN AVE	SPOKANE	no	no
	HANSON WORLDWIDE LLC	WAD988473088	2425 E MAGNESIUM RD	SPOKANE	no	no
	HOLLY ENERGY PARTNERS	WAD0000641548	3225 E LINCOLN RD	SPOKANE	no	no
	OK ELECTRIC INC	WAH000041193	3721 E CENTRAL	SPOKANE	no	yes
	PROTO MFG	WAH0000024086	5959 N FREYA	SPOKANE	no	no
	WA COMMUNITY COLLEGES OF SPOKANE SCC	WAD980983860	N 1810 GREENE ST	SPOKANE	no	no

Number of regulated handlers: 7						
Zip code: 99218	Handler Name	Handler ID	Location Address	City	TSD	Used Oil
	ALBERTSONS #242	WAH000038808	12312 N DIVISION ST	SPOKANE	no	no
	HOME DEPOT 4719	WAH000012641	9116 N NEWPORT HWY	SPOKANE	no	no
	NORTHWEST PIPELINE GP SPOKANE DIST	WAD075231951	1022 E HAWTHORNE RD	SPOKANE	no	no

generator type designators

LQG - large quantity generator ; SQG - conditionally exempt small quantity generator .

EPA Region 10 Report: List of Regulated Handlers, Sorted By Location Zip Code and Handler Name

State of Washington

Number of regulated handlers: 2866

Number of regulated handlers: 7							
Zip code: 99218	Handler Name	Handler ID	Location Address	City	TSD	Gen Type	Used Oil
	RITE AID #5308	WAH000039956	9120 N DIVISION	SPOKANE	no	CEG	no
	TARGET STORE 0636	WAH000027954	9770 N NEWPORT HWY	SPOKANE	no	SQG	no
	TRAVIS PATTERN	WAD0009068578	1413 E HAWTHORNE RD	SPOKANE	no	SQG	no
	WAL MART STORE 2549	WAH000017012	9212 N COLTON ST	SPOKANE	no	SQG	no
Number of regulated handlers: 1							
Zip code: 99219	Handler Name	Handler ID	Location Address	City	TSD	Gen Type	Used Oil
	HORIZON AIR INDUSTRIES	WAH000030344	9118 W ELECTRIC AVE	SPOKANE	no	CEG	no
Number of regulated handlers: 3							
Zip code: 99220	Handler Name	Handler ID	Location Address	City	TSD	Gen Type	Used Oil
	PACIFIC HIDE & FUR DEPOT INC	WAD027514579	1114 N RALPH ST	SPOKANE	no	SQG	no
	WESTERN STATES EQUIP CO SPOKANE TRUCK SH	WAD980988349	520 N DYER RD	SPOKANE	no	CEG	no
	WESTERN STATES EQUIPMENT CO SPOKANE MAIN	WAD046584258	4625 E TRENT AVE	SPOKANE	no	CEG	no
Number of regulated handlers: 4							
Zip code: 99223	Handler Name	Handler ID	Location Address	City	TSD	Gen Type	Used Oil
	ALBERTSONS 268	WAH000032593	3010 E 57TH AVE	SPOKANE	no	CEG	no
	MILLER PAINT COMPANY INC	WAH000040300	2501 E 29TH AVE	SPOKANE	no	CEG	no
	RITE AID #5312	WAH000040154	2929 E 29TH AVE	SPOKANE	no	CEG	no
	RITE AID #5313	WAH000039807	4514 S REGAL ST	SPOKANE	no	CEG	no
Number of regulated handlers: 10							
Zip code: 99224	Handler Name	Handler ID	Location Address	City	TSD	Gen Type	Used Oil
	ASSOCIATED PAINTERS INC	WAH000037469	8510 W ELECTRIC AVE	SPOKANE	no	LQG	no
	CONWAY FREIGHT WESTERN	WAH000030358	6618 W THORPE RD	SPOKANE	no	CEG	no
	FEDEX EXPRESS GEGR	WAD988496642	W 8404 AVIATION AVE	SPOKANE	no	CEG	no
	GOODRICH CORPORATION CARBON PRODUCTS	WAH000006940	11135 W WESTBOW BLVD	SPOKANE	no	LQG	no
	RA PEARSON CO	WAD053060398	8120 W SUNSET HWY	SPOKANE	no	CEG	no
	SPOKANE FALLS COMMUNITY COLLEGE	WAD079246161	3410 W FORT GEORGE WRIGHT DR	SPOKANE	no	SQG	no
	SPOKANE REGIONAL WASTE TO ENERGY FACILIT	WAR000000463	2900 S GEIGER BLVD	SPOKANE	no	LQG	no
	TSA SPOKANE INTERNATIONAL	WAH000023967	9000 W AIRPORT DR TSA	SPOKANE	no	SQG	no
	WA AGR SPOKANE 4	WAH000029685	7211 B WESTBOW BLVD	SPOKANE	no	LQG	no
	RELIANCE TRAILER CO LLC GEIGER BLVD	WAD009065152	3025 S GEIGER BLVD	SPOKANE	no	SQG	no
Number of regulated handlers: 1							
Zip code: 99238	Handler Name	Handler ID	Location Address	City	TSD	Gen Type	Used Oil
	PSE HOPKINS RIDGE WIND FARM	WAH000029487	431 GWINN RD	DAYTON	no	CEG	no

generator type designators

LQG - large quantity generator ; SQG - small quantity generator ; CEG - conditionally exempt small quantity generator

EPA Region 10 Report: List of Regulated Handlers, Sorted By Location Zip Code and Handler Name

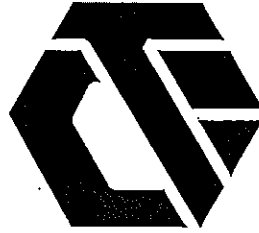
State of Washington

Number of regulated handlers: 2866

Zip code	Handler Name	Location Address	City	TSD	Gen. Type	Transporter	Used Oil
99075	WESTWORTH COLLEGE	300 E HANSMAN RD	PASCO	no	CEG	no	no
99075	AMERICA CORP REVENUE SERVICE CENTER	1000 E HANSMAN RD	PASCO	no	CEG	no	no
99075	SCOTIA UNIVERSITY	1000 E HANSMAN RD	PASCO	no	CEG	no	no
99301	AMERICAN RADIATOR INC PASCO	1910 N 4TH AVE	PASCO	no	none	no	no
	BATTELLE PACIFIC NORTHWEST DIV HANGAR 71	204 N OREGON AVE	PASCO	no	CEG	no	no
	BAYER CROPSCIENCE	3804 STEARMAN AVE	PASCO	no	SQG	no	no
	BNSF RAILWAY COMPANY PASCO	1211 E ST HELENS STE B	PASCO	no	LQG	no	no
	BURLINGTON ENVIRONMENTAL LLC PASCO	3940 N RAILROAD ST	PASCO	no	CEG	no	no
	CENTRAL MACHINERY SALES INC E JAMES	3725 JASON AVE	PASCO	no	none	yes	yes
	CENTRAL MACHINERY SALES INC PASCO	1810 E JAMES ST	PASCO	no	CEG	no	no
	CENTRAL PRE MIX CONCRETE PASCO	1708 E JAMES ST	PASCO	no	CEG	no	no
	COLUMBIA BASIN COLLEGE	11919 HARRIS RD	PASCO	no	CEG	no	no
	CONAGRA FOODS LAMB WESTON PASCO	2600 N 20TH AVE	PASCO	no	CEG	no	no
	CONWAY FREIGHT UPW	960 GLADE RD N	PASCO	no	CEG	no	no
	FEDEX EXPRESS PSC	5220 INDUSTRIAL WAY	PASCO	no	SQG	no	no
	FEDEX FREIGHT INC PASCO	1705 W ARGENT	PASCO	no	CEG	no	no
	FRANK & SONS AUTOBODY INC	221 S OREGON	PASCO	no	CEG	no	no
	OAK HARBOR FREIGHT	1319 W AINSWORTH ST	PASCO	no	CEG	no	no
	OIL RE REFINING CO PASCO	2300 E SAINT HELEN ST	PASCO	no	CEG	no	no
	OXARC INC PASCO	151 N COMMERCIAL AVE	PASCO	no	CEG	no	no
	PARSONS CONSTRUCTORS & FABRICATORS INC PASCO CITY	716 S OREGON AVE	PASCO	no	none	no	yes
	PASCO LANDFILL NPL SITE	3005 E AINSWORTH ST	PASCO	no	CEG	no	no
	PASCO SCHOOL DIST 1	1025 S GREY ST	PASCO	no	LQG	no	no
	PASCO SCHOOL DIST 1 PASCO HS	KAHLOTUS RD & HWY 12	PASCO	no	LQG	no	no
	PELICAN FUELING INC PASCO	3412 STEARMAN BLDG 210	PASCO	no	CEG	no	no
	RITE AID #5314	1108 N 10TH AVE	PASCO	no	CEG	no	no
	RITE AID #5315	5207 N RAILROAD AVE	PASCO	no	none	no	yes
	ROWAND MACHINERY CO PASCO	1308 N 20TH AVE	PASCO	no	CEG	no	no
	RUSS DEAN FORD BODY SHOP	215 N 4TH AVE	PASCO	no	CEG	no	no
	SAFETY KLEEN SYSTEMS 904 E AINSWORTH	1907 E JAMES	PASCO	no	CEG	no	no
		700 W COLUMBIA ST	PASCO	no	CEG	no	no
		904 E AINSWORTH TRANSFER FACIL	PASCO	no	none	no	yes

generator type designators

LQG - large quantity generator ; SQG - small quantity generator ; CEG - conditionally exempt small quantity generator



APPENDIX B

SITE PHOTOGRAPHS

TECHCON, INC.

Consultants • Certified Environmental Specialists • Project Managers

Photograph Summary

Cora Well Site



1

**View looking east along
Cora Avenue at the south
boundary of the subject
site.**



2

**View looking west along
Cora Avenue at the south
boundary of the subject
site.**



3

**View looking north along
the west boundary of the
subject site.**

TechCon, Inc.

Consultants • Certified Environmental Specialists • Project Managers

Photograph Summary

Cora Well Site



4

**View looking northeast
across the subject site.**



5

**View looking northwest
across the subject site.**



6

**View looking southwest
across the subject site.**

TechCon, Inc.

Consultants • Certified Environmental Specialists • Project Managers

Photograph Summary

Cora Well Site



7

View looking north along the east boundary of the subject site.



8

Trash and landscaping debris in the northwest area of the site.

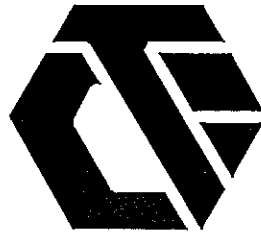


9

View looking southeast across the subject site.

TechCon, Inc.

Consultants • Certified Environmental Specialists • Project Managers



APPENDIX C

SCOPE OF WORK

TECHCON, INC.

Consultants • Certified Environmental Specialists • Project Managers



SCOPE OF WORK

PHASE I ENVIRONMENTAL SITE ASSESSMENT

The purpose of the Phase I Environmental Site Assessment (ESA), conducted in substantial conformance with ASTM Standard 1527-13, is to identify and assess characteristics of the subject property that would be of environmental concern or, conversely, to reasonably illustrate the site characteristics of environmental concern. Environmental concerns include aspects that would lead to liability issues in the event of ownership, that have a potential for impact on property value, and that would impact the present or future use of the property. Main topics are:

- ▲ **Site Reconnaissance** - The reconnaissance shall be performed by a qualified Environmental Site Assessor who shall observe and assess the site characteristics of potential environmental concern (i.e., on-site USTs, wastewater treatment systems, hazardous materials/waste storage, etc.). Aspects of potential regulatory concern shall be researched at the appropriate regulatory agency
- ▲ **Observe Adjacent and Vicinity Properties** - This phase of work shall be performed by a qualified Environmental Site Assessor who shall identify and assess site characteristics of potential environmental concern (i.e., nearby service stations, industrial facilities, etc.). Aspects of potential regulatory concern shall be researched at the appropriate regulatory agency.
- ▲ **Regulatory Agency Review** - This review shall be performed to identify and assess any listings of regulatory permits, registrations, enforcement actions, and contaminated sites at the subject site or close enough to affect the subject property. Commercially available lists may be used. If used, these lists shall be as current as the regulatory agencies' lists. For those sites that are not covered by commercially available lists, the assessor shall review the lists at the appropriate regulatory agency.
- ▲ **Historical Review** - This review shall be implemented to identify any historical uses that may have contributed to the presence of environmental concerns at the site.



- ▲ **Report Development** - The report shall include a discussion of the findings of the tasks discussed in the scope of work. At a minimum, the report shall include each of the main topics of this scope of work and shall include specific identification of the following:
 - ▲ Polychlorinated Biphenyls (PCBs)
 - ▲ Above ground storage tanks (ASTs)
 - ▲ Underground storage tanks (USTs)
 - ▲ Hazardous Substances/Petroleum Products
 - ▲ Odors
 - ▲ Pesticides/Herbicides
 - ▲ Water supplies, Waste Generation, Storage, Disposal

Report Format - The report format to consist of the following:

- ▲ **Table of Contents**
- ▲ **Section 1 - Summary**
 - Certified Environmental Professionals
 - Abbreviated Scope of Work
 - Non-Scope Considerations
- ▲ **Section 2 - Introduction**
 - Purpose
 - Terms and Conditions
 - Limitations and Exceptions
- ▲ **Section 3 - Site Description**
 - Location
 - Site Legal Description
 - Site Description
 - Water, Wastewater, and Sewer Service
 - Current Uses
 - Tenant Interviews (If Applicable)
 - Adjacent/Adjoining Properties
- ▲ **Section 4 - Records Review**
 - Regulatory Agency Review
 - Regional Physiographic Conditions



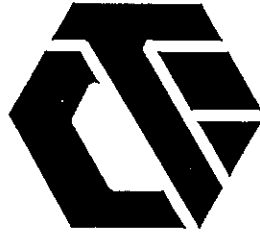
- Topographical Conditions
- Soil Conditions
- Groundwater Conditions
- Historical Review
- Previous Environmental Investigations

- **Section 5 - Investigative Results**
 - Site Observation

- **Section 6 - Findings and Conclusions**
 - Findings
 - Recognized Environmental Conditions (if applicable)
 - Conclusions

- **Section 7 - Certification and Signatures of Environmental Professionals**

- **Appendices**
 - Maps and Site Plans
 - Site Photographs
 - Project Scope of Work
 - Certifications



APPENDIX D

ENVIRONMENTAL CERTIFICATIONS



State of California
California Environmental Protection Agency
Office of Environmental Health Hazard Assessment

Daniel L. Autrey

has fulfilled the requirements for registration as a
Registered Environmental Assessor I (REA I).

Date Registered: October 1998

Joan E. Denton, Ph.D.

Joan E. Denton, Ph.D.
Director

Office of Environmental Health Hazard Assessment

REA - Class I Number: REA-07248

Peter M. Rooney

Peter M. Rooney
Secretary for Environmental Protection
California Environmental Protection Agency

Environmental Assessment Association



hereby certifies that

Daniel L. Aubrey

has been qualified for membership in the

Environmental Assessment Association

and has been admitted by its Board of Directors and declared to be a

CEI

Certified Environmental Inspector

*and is hereby granted this certificate
under the conditions presented in its by-laws.*

Signed and sealed this 16th day of January, 1992

Joseph M. Lacey
Managing Director

AdvanceOnline Solutions Online Institute

Certificate of Completion

Daniel Autrey

has met the online course completion requirements for

HAZWOPER 8-Hour Refresher

Certificate ID: 307_917786
Continuing Education Units: 0.8

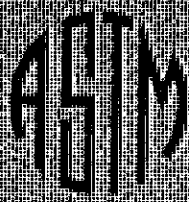
Date: 6/23/2014 12:37:00 AM
Time Online: 14:39:00
AdvanceOnline Solutions, Inc.
2400 Augusta Drive, Suite 465
Houston, Texas 77057
www.advanceonline.com
Phone: (713) 621-1100

AdvanceOnline
S O L U T I O N S

AdvanceOnline Solutions Inc. has been approved as an Authorized Provider by the International Association for Continuing Education and Training (IACET), 1760 Old Meadow Road, Suite 500, McLean, VA 22102; (703) 506-3275.



Technical &
Professional
Training



Daniel Autrey

Is Awarded 1.4 CEUs

*for successful completion of
the course on*

**Environmental Site Assessment
for Commercial Real Estate**

April 7-8, 1998

Seattle, WA

James A. Thomas

President

Scott W. Murphy

Manager, Technical & Professional Training



Environmental Data Resources, Inc.
Continuing Education Program



This is to certify that

Mr. Dan Autrey

has successfully completed the training course

***Conducting Historical Research
According to ASTM Standard E 1527-94***

***in Seattle, Washington
on November 9, 1995***

and in recognition thereof is presented with this Certificate

Certification No. 151

Dan Autrey
Program Director

CERTIFICATE OF COMPLETION
"Performing Phase I Environmental Inspections"

This certifies that

Daniel L. Autrey

*has attended this
intensive educational course
in Seattle, Washington on July 29, 1994.*

**"Consisted of seven and a half (7.5) hours of intensive education and is approved for Real Estate
Appraiser Continuing Education by the State of Washington."**

ENVIRONMENTAL ASSESSMENT ASSOCIATION

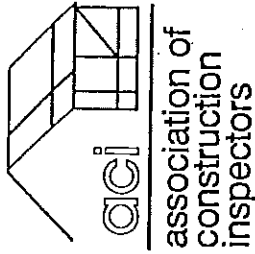
July 29, 1994

Date

Troy E. Johnson

**Troy Johnson
Executive Director**

Association of Construction Inspectors



hereby certifies that

Daniel L. Aubrey

has been qualified for membership in the

Association of Construction Inspectors

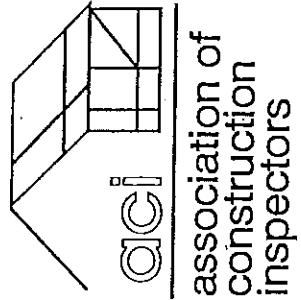
and has been admitted by its Board of Directors and declared to be a

CCPM

Certified Construction Project Manager

and is hereby granted this certificate

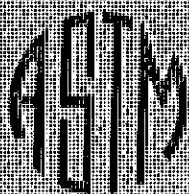
under the conditions presented in its by-laws.



Robert J. Hall
Executive Director

Signed and sealed this 15th day of October, 19 97

Technical &
Professional
Training



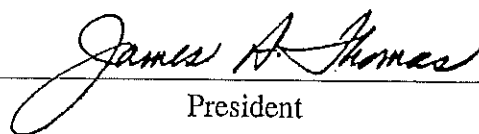
Daniel L. Autrey

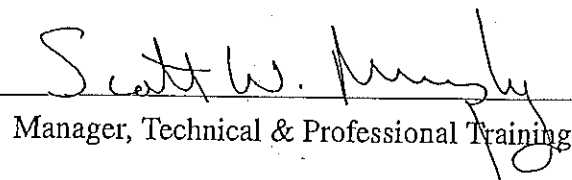
Is Awarded 1.4 CEUs

*for successful completion of
the course on*

**Phase II Environmental
Site Assessment Process**

**March 23-24, 1999
Clearwater Beach, FL**


President


Manager, Technical & Professional Training