



Public Participation Plan

**Whidbey Marine & Auto Supply
Cleanup Site
1695 Main Street, Freeland
Island County**

Toxics Cleanup Program

Washington State Department of Ecology
Northwest Region Office
Shoreline, Washington

Publication 25-09-141, May 2025

Publication Information

This document is available on the Department of Ecology's [Whidbey Marine & Auto Supply](#)¹ cleanup site page.

Cover photo credit

- Whidbey Marine & Auto Supply site, April 2023, WA State Department of Ecology

Related Information

- Cleanup Site ID: 17222251
- Facility Site ID: 5610

Contact Information

[Toxics Cleanup Program](#)²

Northwest Region Office

PO Box 330316
Shoreline, WA 98133-9716
Phone: 206-594-0000

Kristen Forkeutis, Outreach Specialist

Kristen.Forkeutis@ecy.wa.gov

425-240-4353

Bellingham Field Office

913 Squalicum Way, Unit 101
Bellingham, WA 98225
Phone: 360-255-4400

John Rapp, Site Manager

John.Rapp@ecy.wa.gov

206-247-3242

ADA Accessibility

The Department of Ecology is committed to providing people with disabilities access to information and services by meeting or exceeding the requirements of the Americans with Disabilities Act (ADA), Section 504 and 508 of the Rehabilitation Act, and Washington State Policy #188.

To request an ADA accommodation, contact the Ecology ADA Coordinator by phone at 360-407-6831 or email at ecyadacoordinator@ecy.wa.gov. For Washington Relay Service or TTY call 711 or 877-833-6341. Visit [Ecology's website](#)³ for more information.

Language Access

The Department of Ecology offers free translation and interpretation services. If you need help in your preferred language, please call Kristen Forkeutis at 425-240-4353 and request an interpreter, or email Kristen.Forkeutis@ecy.wa.gov.

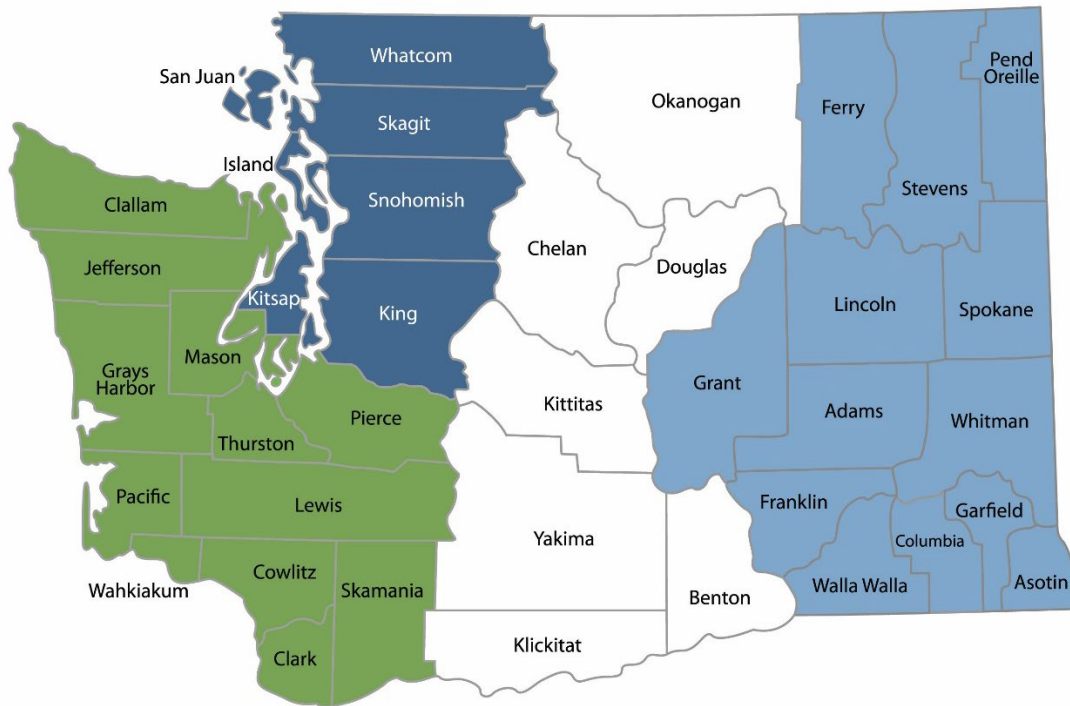
¹ <https://apps.ecology.wa.gov/cleanupsearch/site/5610>

² <https://ecology.wa.gov/About-us/Who-we-are/Our-Programs/Toxics-Cleanup>

³ <https://ecology.wa.gov/about-us/accessibility-equity/accessibility>

Department of Ecology's Region Offices

Map of Counties Served



Southwest Region
360-407-6300

Northwest Region
206-594-0000

Central Region
509-575-2490

Eastern Region
509-329-3400

Region	Counties served	Mailing Address	Phone
Southwest	Clallam, Clark, Cowlitz, Grays Harbor, Jefferson, Mason, Lewis, Pacific, Pierce, Skamania, Thurston, Wahkiakum	PO Box 47775 Olympia, WA 98504	360-407-6300
Northwest	Island, King, Kitsap, San Juan, Skagit, Snohomish, Whatcom	PO Box 330316 Shoreline, WA 98133	206-594-0000
Central	Benton, Chelan, Douglas, Kittitas, Klickitat, Okanogan, Yakima	1250 W Alder St Union Gap, WA 98903	509-575-2490
Eastern	Adams, Asotin, Columbia, Ferry, Franklin, Garfield, Grant, Lincoln, Pend Oreille, Spokane, Stevens, Walla Walla, Whitman	4601 N Monroe Spokane, WA 99205	509-329-3400
Headquarters	Across Washington	PO Box 47600 Olympia, WA 98504	360-407-6000

Table of Contents

Public Involvement in Contamination Cleanup	6
Site contacts.....	6
Public Participation Activities	6
How we share information with the community.....	7
How to share information with us	8
Public Participation Grants	9
Site Information.....	10
Site background	10
Contamination	10
Status of cleanup	12
Neighborhood	13
Tribal engagement.....	13
Environmental Justice	14
Community Language Needs	16
Washington’s Cleanup Laws	16
Model Toxics Control Act	16
State Environmental Policy Act.....	17
Plan Amendments	17
Appendices	18
Appendix A. Steps in the MTCA cleanup process	18
Appendix B. EPA EJScreen Community Report	18

List of Figures

Figure 1: Four drinking water supply wells located south and south-east of the site	11
Figure 2: Extent of groundwater contamination from the Whidbey Marine & Auto Supply site	12
Figure 3: Location of the Whidbey Marine & Auto Supply site	13
Figure 4: Washington Environmental Health Disparities Map for census tract 971900 with an environmental health risk ranking of 1.....	14
Figure 5: EPA EJScreen generated map of the site’s census tract, 971900, from May 2024.....	15

Public Involvement in Contamination Cleanup

The Washington State Department of Ecology (Ecology) developed this public participation plan (plan). The purpose of the plan is to promote meaningful community involvement during cleanup of the Whidbey Marine & Auto Supply cleanup site.

This plan outlines how Ecology will keep the public informed about contamination investigations and cleanup options at each stage of the process. Please review Appendix A for more information about the cleanup process. The plan also details when and how the community can participate in the cleanup process. We encourage the public to engage with the decision-making opportunities and provide input.

Site contacts

To be included in the site record, comments about the cleanup process must be submitted during comment periods. Questions and informal comments or information about the site's history are welcome anytime.

WA Dept of Ecology

Northwest Region Office

PO Box 330316
Shoreline, WA 98133-9716
Phone: 206-594-0000

Bellingham Field Office

913 Squalicum Way, Unit 101
Bellingham, WA 98225
Phone: 360-255-4400

Kristen Forkeutis, Outreach Specialist

Kristen.Forkeutis@ecy.wa.gov

425-240-4353

John Rapp, Site Manager

John.Rapp@ecy.wa.gov

206-247-3242

If you are unable to reach these contacts, please visit the [Whidbey Marine & Auto Supply cleanup site page](#)⁴ for up-to-date contact information.

Public Participation Activities

Members of the public may ask questions, submit informal comments, or share site information at any time. Interested parties do not need to wait for a formal public comment period to contact Ecology.

However, to be included in the formal site record, comments about the site investigation, cleanup alternatives, or cleanups must be submitted during formal comment periods. In addition, the public is invited to review site documents before they become final. This is the most direct and influential way to learn more about the site and be involved in the cleanup's decision-making.

⁴ <https://apps.ecology.wa.gov/cleanupsearch/site/5610>

How we share information with the community

During specific stages of the cleanup, Ecology will mail notices about public comment periods to addresses surrounding the site. The mailing list area will vary depending on the type of contamination and where it's located. However, the list will at least include addresses within a 1/4-mile radius of the site and other interested organizations and individuals. These notices will provide general information about the site, contact information for submitting comments, and times and locations of public meetings or hearings or how to request one if not yet scheduled.

Comment period notices will be available online and at document repositories (at the library closest to the site, for example). Notices may also be posted in various locations throughout the community (local businesses, schools, post offices, etc.).

Ecology may also develop documents outside of comment periods to keep the community updated on the site's status. These informational documents will be available online and print copies may be mailed to the nearby community if we feel the message warrants the associated cost and resources.

Postal mailing list

Ecology maintains a mailing list that includes addresses within at least a 1/4-mile radius of the site and relevant local, state, and federal government contacts. All contacts receive public comment notices when draft documents are available.

We will add additional individuals, organizations, and other interested parties to the mailing list as requested. If you would like to be added to the mailing list for this site, please contact Kristen Forkeutis at 425-240-4353 or Kristen.Forkeutis@ecy.wa.gov.

Contaminated Site Register

Public comment periods, events, and other cleanup notices are published in Ecology's [Contaminated Site Register](#).⁵ To receive the *Contaminated Site Register* by email, please [subscribe online](#),⁶ or contact Sarah Kellington at sarah.kellington@ecy.wa.gov or 360-280-3167.

Newspaper display ads or legal notices

We announce public comment periods and events for this site in ads or notices published in the *Whidbey News-Times* and possibly the *South Whidbey Record*. We will also publish notice on our [Public Input & Events Listing webpage](#).⁷

Email lists

Ecology maintains an email list to update interested persons about this site. If you would like to be added to the email list for this site, please contact Kristen Forkeutis at 425-240-4353 or Kristen.Forkeutis@ecy.wa.gov.

⁵ <https://ecology.wa.gov/Regulations-Permits/Guidance-technical-assistance/Site-Register-lists-and-data>

⁶ <https://ecology.wa.gov/site-register>

⁷ <https://ecology.wa.gov/Events/Search/Listing>

Ecology's website and social media platforms

We maintain a website for the [Whidbey Marine & Auto Supply site](#).⁸ The website provides site information, and you may download cleanup documents.

We may also share information about cleanup sites through [news releases, our ECOconnect blog, and social media](#).⁹

Automatic site updates

You can subscribe to this site from our Whidbey Marine & Auto Supply webpage. You'll receive a weekly email if we change the site's status, add documents to the site's webpage, or open a comment period.

Places to see print documents

During public comment periods, you can find print documents at the following locations:

Freeland Public Library

5495 Harbor Ave
Freeland, WA 98249
Phone: 360-331-7323

Washington Department of Ecology

Northwest Region Office
15700 Dayton Ave N
Shoreline, WA 98133

To schedule an appointment with Ecology, please contact the Northwest Region Office Central Records staff at (206) 594-0016 or nwro_public_request@ecy.wa.gov.

If you would like to be mailed print documents, please contact Kristen Forkeutis at 425-240-4353 or Kristen.Forkeutis@ecy.wa.gov.

Signs around the cleanup site

We may also install signs displaying information about project status, traffic impacts, and health risks around the cleanup site.

How to share information with us

We hold public comment periods and sometimes public events to learn your thoughts, opinions, and concerns about cleanup at a site. We may also identify public concerns and cleanup goals by meeting with and soliciting information from interested community members and organizations. To collaborate with us about this site, please contact Kristen Forkeutis at 425-240-4353 or Kristen.Forkeutis@ecy.wa.gov.

Public comment periods

At a minimum, the Model Toxics Control Act (MTCA, see page 16 for more information) requires 30-day comment periods to allow interested members of the public to comment on

⁸ <https://apps.ecology.wa.gov/cleanupsearch/site/5610>

⁹ <https://ecology.wa.gov/about-us/who-we-are/news>

draft documents, legal agreements, and proposed cleanup actions. If there is significant interest, Ecology may extend the public comment period.

When Ecology oversees the State Environmental Policy Act (SEPA) determinations (see page 17 for more information), we hold comment periods for at least two weeks and may extend to 30 days or more when other cleanup documents are concurrently available for review.

Following a comment period, we publish all the input we received and respond to significant comments and questions, as appropriate. If the comments result in significant changes to the cleanup documents, then the documents will be revised and re-issued for public review. If the comments do not result in significant changes, the documents will become final.

Public events

We hold public meetings, workshops, open houses, and hearings based on community interest. At meetings, workshops, and open houses, attendees can ask questions, learn more about the site, and submit written comments when a comment period is open. At a public hearing, verbal comments are transcribed for the record, and Ecology responds to them after the comment period in our response to comments.

If we have not scheduled an event, we will hold one if 10 or more people request it. This may cause us to extend a public comment period, so the event occurs during it.

Events are held at locations close to the site that meet Americans with Disabilities Act standards. Public events are always announced in advance using a variety of methods.

Public Participation Grants

Grants may be available to neighborhood committees, non-profits, and other groups interested in the site. For contaminated sites, these funds can be used to:

- Hire an expert to help interpret technical information
- Conduct activities that enhance the public's understanding of, and participation in, the cleanup process

For more information about public participation grants, please contact Laura Busby at 360-280-5088 or laura.busby@ecy.wa.gov and Wendy Kovach at 564-250-2909 or wendy.kovach@ecy.wa.gov. You may also visit the [Public Participation Grant website](#).¹⁰

¹⁰ <https://ecology.wa.gov/PPG>

Site Information

Site background

The Whidbey Marine & Auto Supply cleanup site is in the heart of Freeland, the economic hub of South Whidbey Island. Whidbey Marine & Auto Supply operated as a retail gasoline service station, auto and boat supply store, and auto repair facility between 1971 and 2014. The retail gasoline station stopped operations in 2009, and the property was sold the same year. Today the property is owned by 1695 Main St, LLC and occupied by Scotty's Towing.

Four underground storage tanks (USTs) were installed at the site between 1982 and 1986. These included one 3,000-gallon diesel UST, two 10,000-gallon gasoline USTs, and one 8,000-gallon gasoline UST. A release of unleaded gasoline was reported to Ecology in 2005. At that time the site entered into Ecology's [Voluntary Cleanup Program \(VCP\)](#),¹¹ which helps property owners manage cleanups. Between 2006 and 2011 a series of interim actions (early partial cleanups) removed gasoline vapors from the contaminated soil. In January 2011, all the USTs and associated piping were removed from the property along with some contaminated soil.

Between 2017 to 2020, the site was enrolled in the Washington Pollution Liability Insurance Agency (PLIA) [Technical Assistance Program \(TAP\)](#)¹² to receive advice and guidance on cleaning up the site.

In 2023 Ecology's Toxics Cleanup Program finalized a state funded contract with consulting firm Haley & Aldrich (HA) to continue the cleanup process under the Model Toxics Control Act (MTCA – see page 16).

Contamination

Investigations found many contaminants present at levels that exceeded standards under the state's cleanup law, MTCA (see page 16). These included the following.

- **Soil:** Total Petroleum Hydrocarbons (TPH) and associated chemical contaminants such as benzene, toluene, ethylbenzene, and total xylene (i.e. BTEX). Other contaminants also included tetrachloroethylene (PCE).
- **Groundwater:** TPH and associated chemical contaminants such as benzene, toluene, ethylbenzene, and total xylene (i.e. BTEX). Other contaminants included PCE and trichloroethylene (TCE).

Groundwater contamination

Beneath the Whidbey Marine & Auto Supply site, there are two distinct groundwater zones: a perched zone about 60 feet below the ground surface and a deeper zone about 100 feet below the ground surface. The deeper groundwater zone comprises the regional aquifer or Sea-Level Aquifer.

¹¹ <https://ecology.wa.gov/spills-cleanup/contamination-cleanup/voluntary-cleanup-program>

¹² <https://plia.wa.gov/technical-assistance-program/>

The Sea-Level Aquifer is Whidbey Island's main source of drinking water, and an invaluable resource. The Freeland Water and Sewer District operates four drinking water supply wells located south and south-east of the site (see figure 1) that pull water from the Sea-Level Aquifer.

Contamination from the release of gasoline from a UST has slowly traveled through the sub-surface reaching both the perched groundwater zone and the Sea-Level Aquifer in the vicinity beneath the property (see figure 2).

Groundwater will be monitored to make sure the contamination is not moving towards the drinking water wells. To date, groundwater monitoring has not detected any contamination at several monitoring wells located downgradient of the site. This indicates there is no immediate threat to the drinking water supply. However, the contamination remains a concern and must be addressed.



Figure 1: Four drinking water supply wells located south and south-east of the site

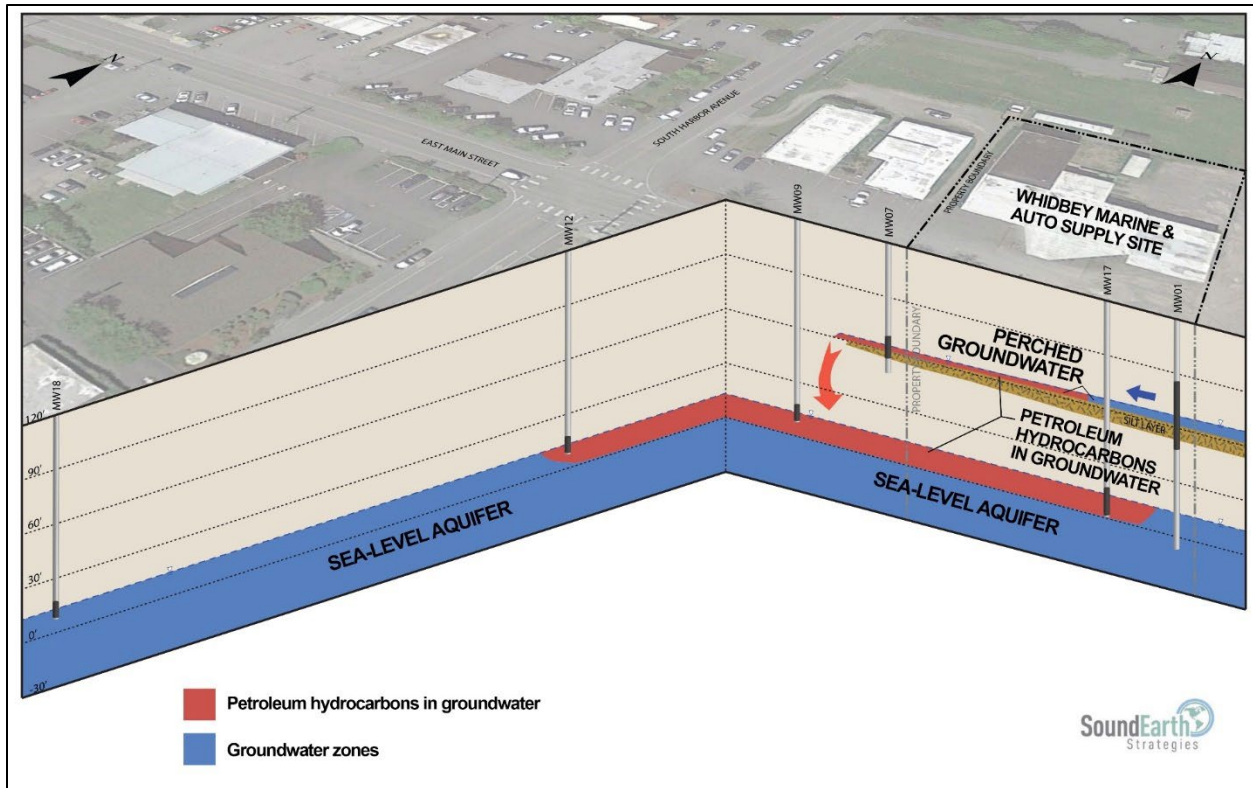


Figure 2: Extent of groundwater contamination from the Whidbey Marine & Auto Supply site

Status of cleanup

In 2025 Ecology will finalize the following two documents after considering all the comments received during the public comment period:

- **Remedial Investigation:** Details the types and locations of contamination at the site.
- **Feasibility Study:** Explains the different cleanup methods, called alternatives, including Ecology's preferred cleanup alternative.

The cleanup action plan will be available for review during a future public comment period.

Neighborhood

The site is located at 1695 East Main Street in Freeland, WA on South Whidbey Island. The site lies within the heart of Freeland, the economic hub of South Whidbey Island. The property lies within the Freeland village core zoning district and has an urban area land designation.

Tribal engagement

The following Tribes could be affected by the contamination, and the cleanup process could also uncover cultural resources.

- Tulalip Tribes
- Stillaguamish Tribe
- Swinomish Tribe
- Port Gamble S'Klallam Tribe
- Samish Indian Nation
- Suquamish Tribe
- Jamestown S'Klallam Tribe
- Lower Elwha Klallam Tribe
- Lummi Nation
- Upper Skagit Tribe
- Nooksack Tribe

We will reach out to these Tribes to offer opportunities to engage with Ecology in the cleanup process.



Figure 3: Location of the Whidbey Marine & Auto Supply site

Environmental Justice

Ecology uses multiple resources to better understand the environmental and demographic information of the communities impacted by cleanup sites. When appropriate Ecology considers special accommodations based on the needs of the community.

WA Environmental Health Disparities Map

The [Washington Environmental Health Disparity Map](https://fortress.wa.gov/doh/wtnibl/WTNIBL/)¹³ evaluates environmental health risk factors in communities.

Ecology does not interpret rankings as absolute values, and we do not use them to diagnose a community health issue or to label a community. Environmental health disparity is ranked on a scale of 1-10 (low to high) and is relative to other locations in the state. Census tract 971900, where the Whidbey Marine & Auto Supply site is located, has an environmental health risk ranking of 1 (see Figure 4).



Figure 4: Washington Environmental Health Disparities Map for census tract 971900 with an environmental health risk ranking of 1.

The Washington State Department of Health mapping tool model was “specifically adapted from CalEnviroScreen – a cumulative environmental impacts assessment mapping tool developed by CalEPA and used in California. It estimates a cumulative environmental health impact score for each census tract reflecting pollutant exposures and factors that affect people’s vulnerability to environmental pollution.

The model is based on a conceptual formula of Risk = Threat * Vulnerability, where threat and vulnerability are based on several indicators.

¹³ <https://fortress.wa.gov/doh/wtnibl/WTNIBL/>

The threat is represented by indicators that account for pollution burden, which is a combination of environmental effects and environmental exposures in communities. Environmental effects include indicators that account for adverse environmental quality generally, even when population contact with an environmental hazard is unknown or uncertain. Environmental exposures include the levels of certain pollutants that populations come into contact with.

Vulnerability is represented by indicators of socioeconomic factors and sensitive populations for which there is clear evidence that they may affect susceptibility or vulnerability to an increased pollution burden. Indicators in socioeconomic factors measure population characteristics that modify the pollution burden itself. Sensitive populations refer to those who are at greater risk due to intrinsic biological vulnerability to environmental stressors.

In the model, threat is multiplied by vulnerability in order to reflect the scientific literature that indicates population characteristics often modify and amplify the impact of pollution exposures on certain vulnerable populations. The rankings help to compare health and social factors that may contribute to disparities in a community.”

EJScreen

The Environmental Justice Screening and Mapping Tool (EJScreen) was developed by the U.S. Environmental Protection Agency (EPA) based on nationally consistent data and an approach that combines environmental and demographic indicators in maps and reports. As of February 2025, the online EJScreen resource was removed by the EPA. As a result, Ecology is referencing EJScreen data previously obtained for this community.

The May 2024 EJScreen analysis of the census tract the site is located within (see figure 5) identified a significant “population over 64 years of age.” In response, Ecology will adjust outreach efforts to best meet the needs of the community.

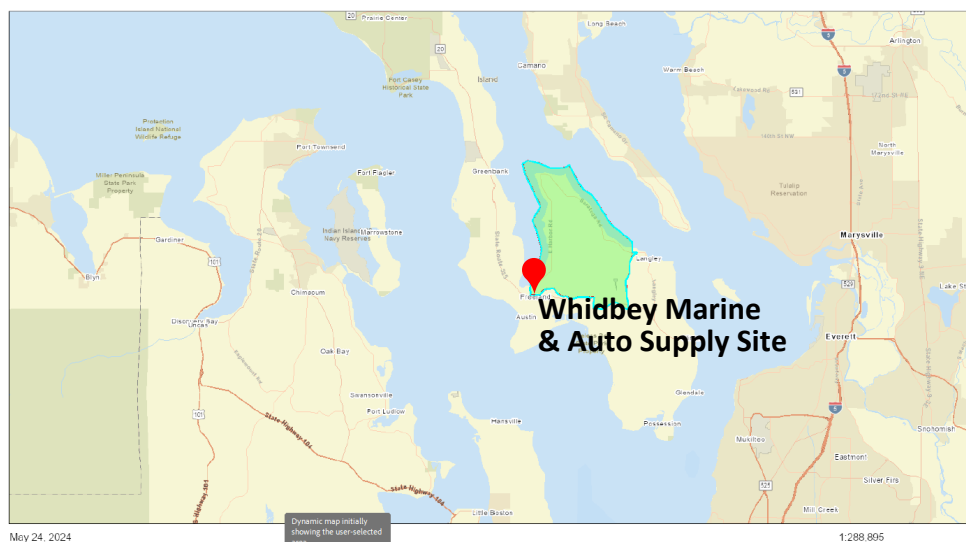


Figure 5: EPA EJScreen generated map of the site’s census tract, 971900, from May 2024.

American Community Survey

The [American Community Survey \(ACS\)](https://www.census.gov/programs-surveys/acs/about.html)¹⁴ is an ongoing survey conducted by the U.S. Census Bureau. It provides updated yearly data on the social, economic, housing, and demographic characteristics of the U.S. population. Ecology uses this information to help identify limited English proficient (LEP) populations. This data, used in conjunction with community research, helps determine the need for translating materials or providing interpretation services.

2023 regional ACS data shows that Island and San Juan counties have a low percentage of the population with limited English proficiency.

Community Language Needs

As part of our public involvement efforts, Ecology will reach out to cultural community organizations (when available) and provide information in other languages as needed and in accordance with [federal guidance](https://www.federalregister.gov/documents/2004/06/25/04-14464/guidance-to-environmental-protection-agency-financial-assistance-recipients-regarding-title-vi).¹⁵ Data and community research shows that the non-English language most widely spoken in the area is Spanish. However, there is a low percentage of the population with limited English proficiency.

To request information in another language, call Kristen Forkeutis at 425-240-4353 or email Kristen.Forkeutis@ecy.wa.gov. If calling for interpretation services, please ask for an interpreter and stay on the line while we connect you.

We strive to make our public participation efforts as inclusive as possible and welcome your input about how to best reach the nearby community.

Washington's Cleanup Laws

Ecology uses the [Model Toxics Control Act \(MTCA\)](https://www.ecology.wa.gov/mtca)¹⁶ and accompanying regulations for cleanup activities. Passed in 1989, MTCA provides guidelines for contaminated site cleanup in Washington state. This law sets standards to ensure the cleanup protects human health and the environment. MTCA requires the creation of this plan.

Model Toxics Control Act

MTCA began in 1988 as a citizen-led effort to clean up contaminated sites in Washington state. The law holds property owners or operators responsible for cleaning up contamination on, or coming from, their property.

Ecology carries out MTCA, making sure cleanups happen according to state rules and regulations. These rules are found in [Chapter 173-340 Washington Administrative Code \(WAC\)](https://www.wa.gov/chapter-173-340-washington-administrative-code-wac).¹⁷ Ecology investigates reports of contamination, and the property is placed on the

¹⁴ <https://www.census.gov/programs-surveys/acs/about.html>

¹⁵ <https://www.federalregister.gov/documents/2004/06/25/04-14464/guidance-to-environmental-protection-agency-financial-assistance-recipients-regarding-title-vi>

¹⁶ <https://www.ecology.wa.gov/mtca>

¹⁷ <https://apps.ecology.wa.gov/publications/publications/9406.pdf>

[Contaminated Sites List](#),¹⁸ if the pollution is determined to pose a serious risk to human health or the environment. This starts the cleanup process at the site.

The cleanup process under MTCA includes several steps (Appendix A). Public involvement is a key part of MTCA's [cleanup process](#).¹⁹ Nearby residents, businesses, community groups, and other interested parties can review and comment on documents related to steps that make crucial decisions or plans regarding the cleanup.

State Environmental Policy Act

MTCA cleanups also require evaluation under the [State Environmental Policy Act \(SEPA\)](#).²⁰ Under SEPA, the potential for significant adverse environmental impacts from a project or action must be evaluated by state and local agencies when making decisions. This evaluation is subject to public review and comment in parallel with cleanup documents.

Plan Amendments

Ecology developed this plan following MTCA regulations (WAC 173-340-600). We review it as the cleanup progresses and amend it as necessary. You may suggest amendments to Kristen Forkeutis at 425-240-4353 or Kristen.Forkeutis@ecy.wa.gov.

This plan intends to provide the public with information on opportunities for public involvement and comment. The outreach activities discussed reflect Ecology's current plans to keep the public informed. It also provides ways for those interested in the site to communicate their concerns and questions to us.

If you feel the planned outreach activities and mechanisms found in this plan are insufficient or would like to modify them in some way, please contact us. We will work to find solutions. We can implement new activities or outreach tools right away, with or without amending this plan.

¹⁸ <https://apps.ecology.wa.gov/cleanupsearch/reports/cleanup/contaminated>

¹⁹ <https://ecology.wa.gov/MTCA-process>

²⁰ <https://app.leg.wa.gov/WAC/default.aspx?cite=197-11>

Appendices

Appendix A. Steps in the MTCA cleanup process

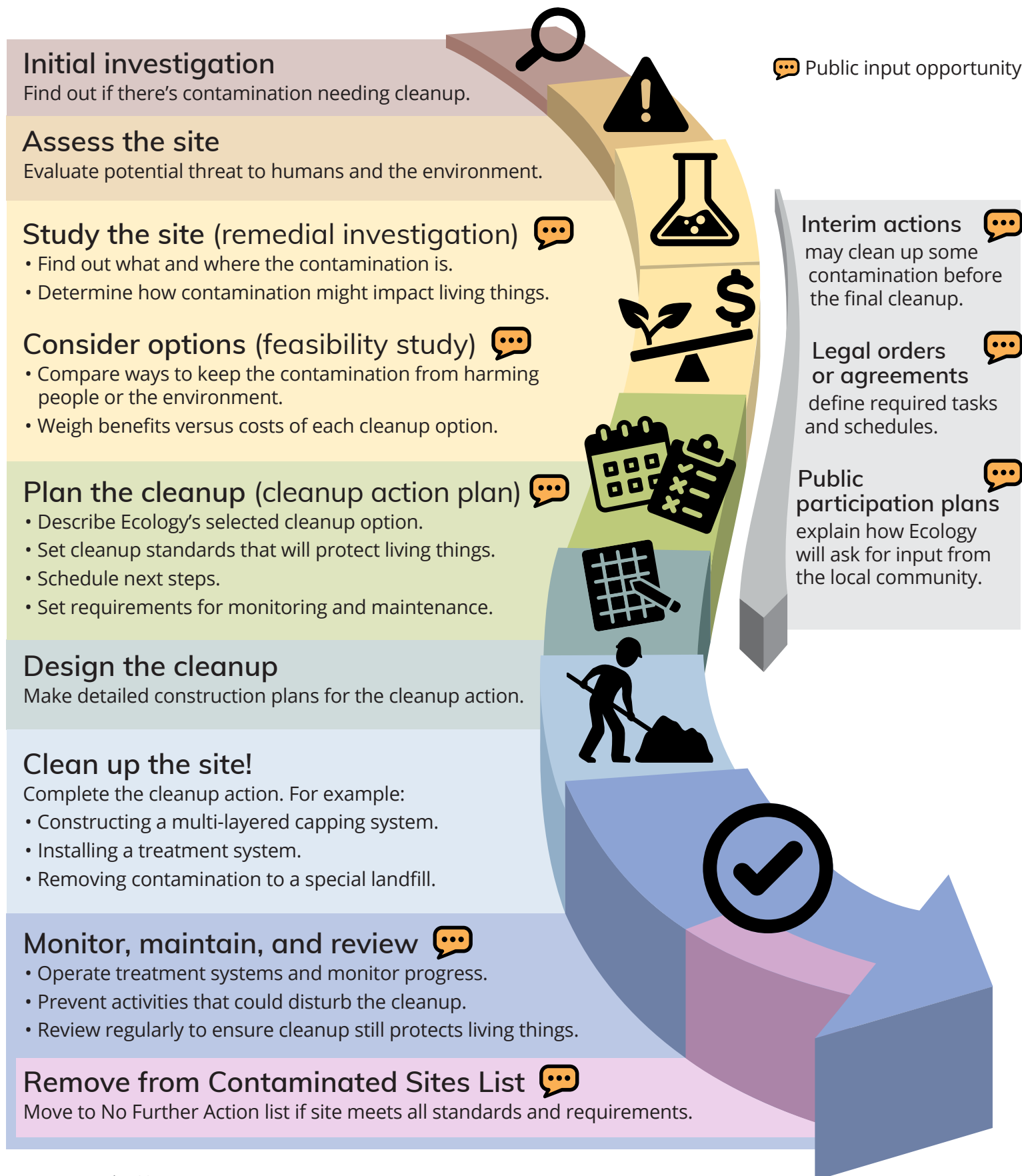
The cleanup process is defined in the Model Toxics Control Act (MTCA), Washington's cleanup law. See the accessible PDF for details.

Appendix B. EPA EJScreen Community Report

EPA's EJScreen community report for census tract 971900.

Washington's Cleanup Process

Public participation plans and comment periods are only required for cleanups under a legal agreement with Ecology. Otherwise, all cleanups follow the same steps. The steps are defined by Washington's cleanup law, the Model Toxics Control Act.





EJScreen Community Report

This report provides environmental and socioeconomic information for user-defined areas, and combines that data into environmental justice and supplemental indexes.

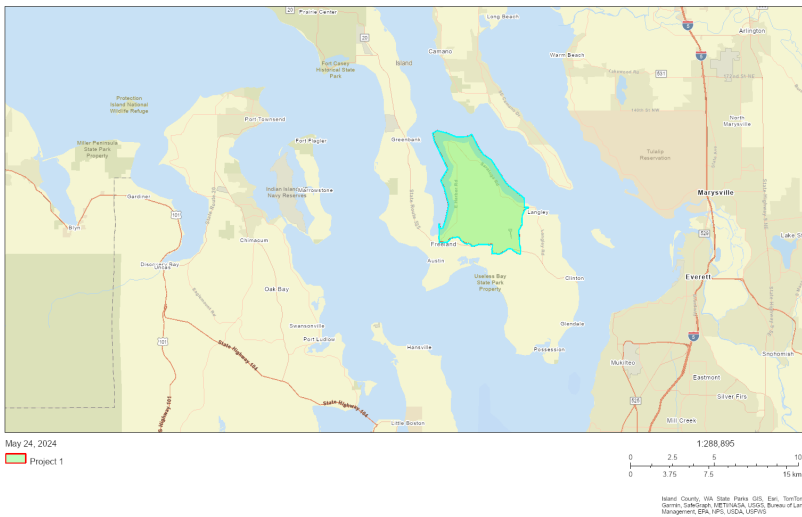
Island County, WA

Tract: 53029971900

Population: 4,298

Area in square miles: 25.29

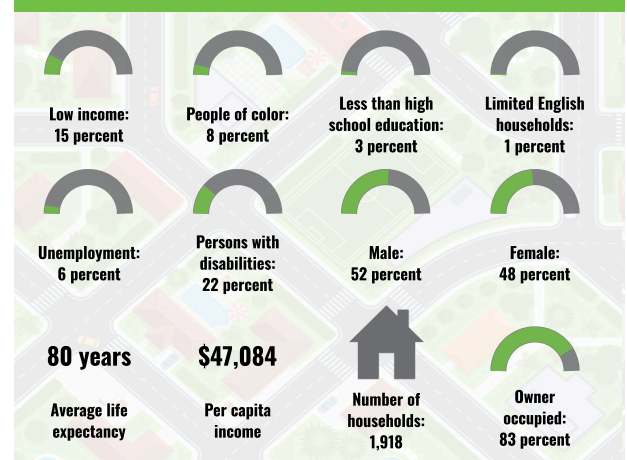
A3 Landscape



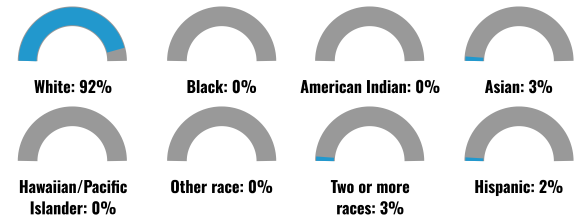
LANGUAGES SPOKEN AT HOME

LANGUAGE	PERCENT
English	98%
Other Asian and Pacific Island	1%
Arabic	1%
Total Non-English	2%

COMMUNITY INFORMATION



BREAKDOWN BY RACE



BREAKDOWN BY AGE



LIMITED ENGLISH SPEAKING BREAKDOWN



Notes: Numbers may not sum to totals due to rounding. Hispanic population can be of any race. Source: U.S. Census Bureau, American Community Survey (ACS) 2017-2021. Life expectancy data comes from the Centers for Disease Control.

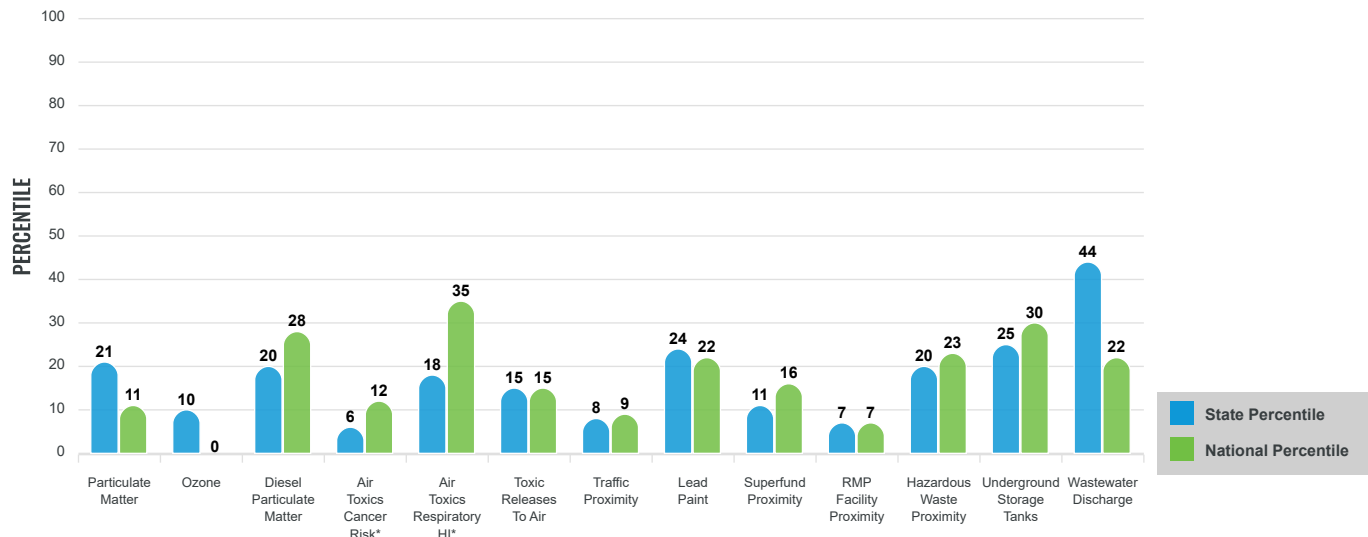
Environmental Justice & Supplemental Indexes

The environmental justice and supplemental indexes are a combination of environmental and socioeconomic information. There are thirteen EJ indexes and supplemental indexes in EJScreen reflecting the 13 environmental indicators. The indexes for a selected area are compared to those for all other locations in the state or nation. For more information and calculation details on the EJ and supplemental indexes, please visit the [EJScreen website](#).

EJ INDEXES

The EJ indexes help users screen for potential EJ concerns. To do this, the EJ index combines data on low income and people of color populations with a single environmental indicator.

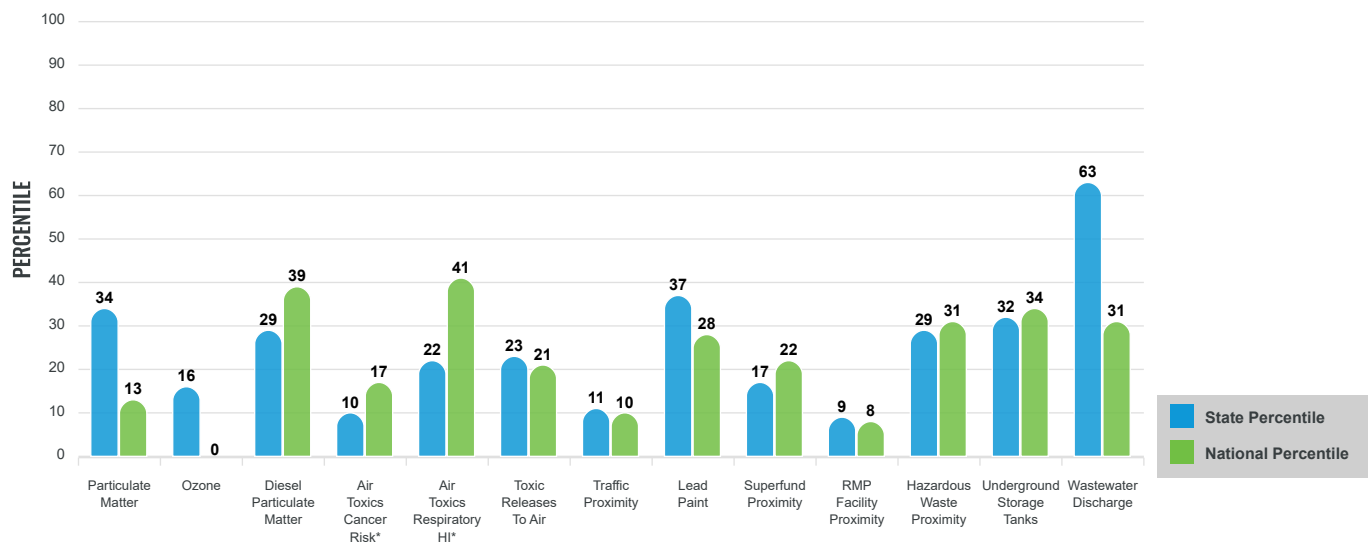
EJ INDEXES FOR THE SELECTED LOCATION



SUPPLEMENTAL INDEXES

The supplemental indexes offer a different perspective on community-level vulnerability. They combine data on percent low-income, percent linguistically isolated, percent less than high school education, percent unemployed, and low life expectancy with a single environmental indicator.

SUPPLEMENTAL INDEXES FOR THE SELECTED LOCATION



These percentiles provide perspective on how the selected block group or buffer area compares to the entire state or nation.

Report for Tract: 53029971900

EJScreen Environmental and Socioeconomic Indicators Data

SELECTED VARIABLES	VALUE	STATE AVERAGE	PERCENTILE IN STATE	USA AVERAGE	PERCENTILE IN USA
POLLUTION AND SOURCES					
Particulate Matter ($\mu\text{g}/\text{m}^3$)	6.7	7.02	35	8.08	15
Ozone (ppb)	46	49.8	17	61.6	0
Diesel Particulate Matter ($\mu\text{g}/\text{m}^3$)	0.201	0.355	31	0.261	46
Air Toxics Cancer Risk* (lifetime risk per million)	20	27	2	25	5
Air Toxics Respiratory HI*	0.3	0.39	14	0.31	31
Toxic Releases to Air	120	1,800	27	4,600	25
Traffic Proximity (daily traffic count/distance to road)	6.2	190	12	210	12
Lead Paint (% Pre-1960 Housing)	0.087	0.23	40	0.3	33
Superfund Proximity (site count/km distance)	0.03	0.18	19	0.13	28
RMP Facility Proximity (facility count/km distance)	0.049	0.4	9	0.43	10
Hazardous Waste Proximity (facility count/km distance)	0.22	1.6	32	1.9	37
Underground Storage Tanks (count/km ²)	0.58	6.3	36	3.9	41
Wastewater Discharge (toxicity-weighted concentration/m distance)	0.00036	0.024	80	22	40
SOCIOECONOMIC INDICATORS					
Demographic Index	11%	28%	10	35%	12
Supplemental Demographic Index	8%	12%	33	14%	25
People of Color	8%	32%	8	39%	18
Low Income	15%	24%	36	31%	27
Unemployment Rate	6%	5%	69	6%	67
Limited English Speaking Households	1%	4%	52	5%	57
Less Than High School Education	3%	8%	35	12%	26
Under Age 5	1%	6%	9	6%	13
Over Age 64	39%	16%	96	17%	95
Low Life Expectancy	18%	18%	44	20%	33

*Diesel particulate matter, air toxics cancer risk, and air toxics respiratory hazard index are from the EPA's Air Toxics Data Update, which is the Agency's ongoing, comprehensive evaluation of air toxics in the United States. This effort aims to prioritize air toxics, emission sources, and locations of interest for further study. It is important to remember that the air toxics data presented here provide broad estimates of health risks over geographic areas of the country, not definitive risks to specific individuals or locations. Cancer risks and hazard indices from the Air Toxics Data Update are reported to one significant figure and any additional significant figures here are due to rounding. More information on the Air Toxics Data Update can be found at: <https://www.epa.gov/haps/air-toxics-data-update>.

Sites reporting to EPA within defined area:

Superfund	0
Hazardous Waste, Treatment, Storage, and Disposal Facilities	0
Water Dischargers	1
Air Pollution	0
Brownfields	0
Toxic Release Inventory	0

Other community features within defined area:

Schools	0
Hospitals	0
Places of Worship	2

Other environmental data:

Air Non-attainment	No
Impaired Waters	Yes

Selected location contains American Indian Reservation Lands*	No
Selected location contains a "Justice40 (CEJST)" disadvantaged community	No
Selected location contains an EPA IRA disadvantaged community	No

Report for Tract: 53029971900

EJScreen Environmental and Socioeconomic Indicators Data

HEALTH INDICATORS					
INDICATOR	VALUE	STATE AVERAGE	STATE PERCENTILE	US AVERAGE	US PERCENTILE
Low Life Expectancy	18%	18%	44	20%	33
Heart Disease	7.6	5.3	92	6.1	78
Asthma	10.2	10.5	35	10	61
Cancer	9.8	6.3	98	6.1	97
Persons with Disabilities	22.1%	13.1%	92	13.4%	91

CLIMATE INDICATORS					
INDICATOR	VALUE	STATE AVERAGE	STATE PERCENTILE	US AVERAGE	US PERCENTILE
Flood Risk	10%	11%	68	12%	66
Wildfire Risk	0%	12%	0	14%	0

CRITICAL SERVICE GAPS					
INDICATOR	VALUE	STATE AVERAGE	STATE PERCENTILE	US AVERAGE	US PERCENTILE
Broadband Internet	10%	9%	67	14%	48
Lack of Health Insurance	5%	6%	48	9%	38
Housing Burden	No	N/A	N/A	N/A	N/A
Transportation Access	Yes	N/A	N/A	N/A	N/A
Food Desert	No	N/A	N/A	N/A	N/A

Report for Tract: 53029971900